

Data Path : Z:\pestpcbsrv\HPCHEM1\ECD_L\Data\PL120822\
 Data File : PL079634.D
 Signal(s) : Signal #1: ECD1A.ch Signal #2: ECD2B.ch
 Acq On : 08 Dec 2022 15:36
 Operator : AR\AJ
 Sample : N5942-01
 Misc :
 ALS Vial : 19 Sample Multiplier: 1

Instrument :
 ECD_L
 ClientSampleId :

Integration File signal 1: autoint1.e
 Integration File signal 2: autoint2.e
 Quant Time: Dec 08 20:20:39 2022
 Quant Method : Z:\pestpcbsrv\HPCHEM1\ECD_L\methods\PL112322.M
 Quant Title : GC Extractables
 QLast Update : Thu Nov 24 00:09:49 2022
 Response via : Initial Calibration
 Integrator: ChemStation

Volume Inj. : 1 µl
 Signal #1 Phase : ZB-MR2 Signal #2 Phase: ZB-MR1
 Signal #1 Info : 30M x 0.32mm x0.2 Signal #2 Info : 30M x 0.32mm x0.5µm

Compound	RT#1	RT#2	Resp#1	Resp#2	ng/ml	ng/ml
System Monitoring Compounds						
1) SA Tetrachlo...	3.317	2.565	25300974	29902192	11.200	10.985
28) SA Decachlor...	8.764	7.630	19661676	24436732	10.124	10.402
Target Compounds						
2) A alpha-BHC	3.764	0.000	158552	0	0.046	N.D. #
3) MA gamma-BHC...	4.117	0.000	1444350	0	0.446	N.D. #
4) MA Heptachlor	4.680	3.698	525258	3516775	0.159	0.914 #
5) MB Aldrin	5.001f	3.971	6031208	2674905	1.942	0.720 #
6) B beta-BHC	4.328	3.698f	5633291	3516775	3.990	2.321 #
7) B delta-BHC	0.000	3.896	0	1193283	N.D.	0.310 #
8) B Heptachlo...	5.461	4.480	1750353	611965	0.613	0.181 #
9) A Endosulfan I	5.836	0.000	2880720	0	1.083	N.D. #
10) B gamma-Chl...	5.714	4.739f	2661154	7824138	0.930	2.312 #
11) B alpha-Chl...	5.785	4.774	8940829	10436100	3.103	3.116
12) B 4,4'-DDE	5.946f	4.971	1947963	6978463	0.780	2.276 #
13) MA Dieldrin	6.137f	5.095	-19218	5413287	N.D.	1.606
14) MA Endrin	6.349	5.342f	277867	798768	0.115	0.264 #
15) B Endosulfa...	6.554f	5.657	529564	1483789	0.235	0.530 #
16) A 4,4'-DDD	6.479	0.000	666427	0	0.336	N.D. #
17) MA 4,4'-DDT	6.809	5.760	182156	818401	0.080	0.313 #
18) B Endrin al...	0.000	5.807f	0	911033	N.D.	0.428 #
20) A Methoxychlor	0.000	6.361f	0	247000	N.D.	0.182 #
23) Chlordane-1	0.000	3.533	0	7669063	N.D.	72.105 #
24) Chlordane-2	5.001	4.086	6031208	2795432	57.237	23.876 #
25) Chlordane-3	5.714	4.739f	2661154	7824138	6.409	23.404 #
26) Chlordane-4	5.785	4.774	8940829	10436100	17.573	28.800 #

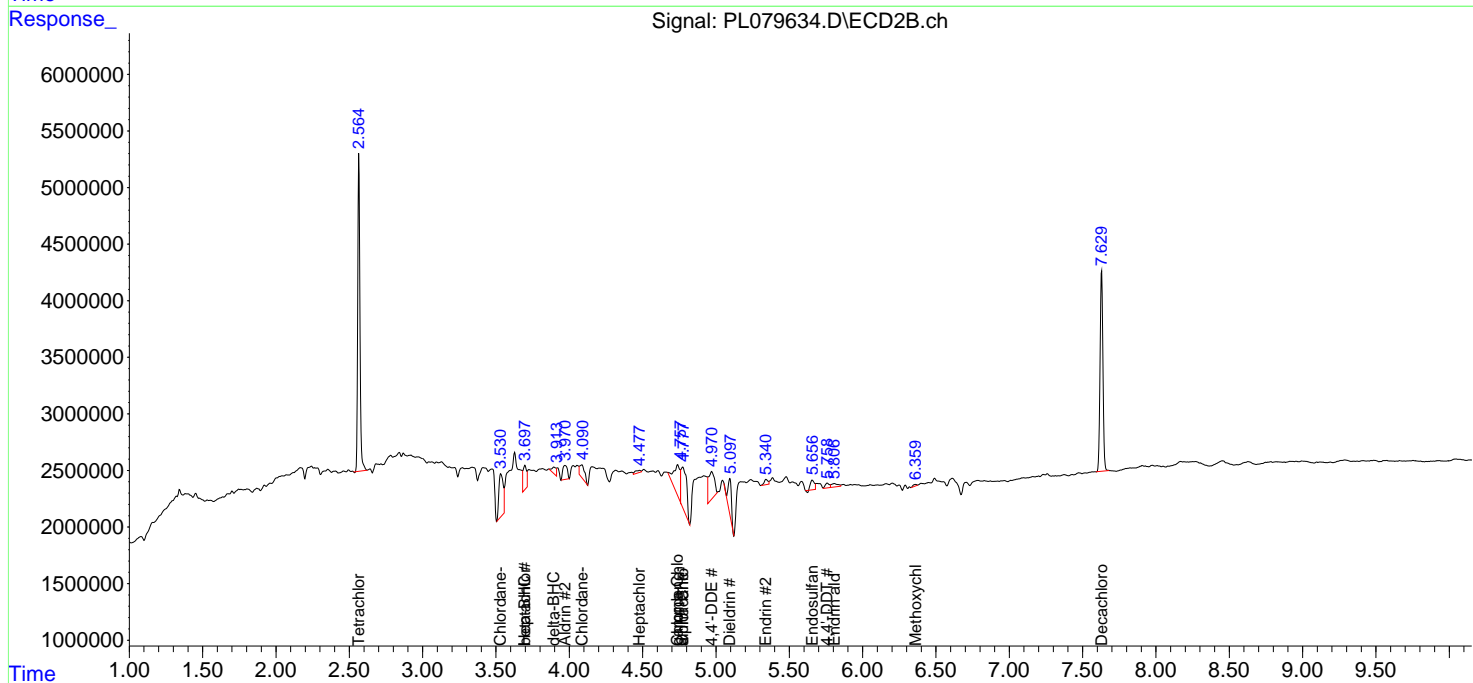
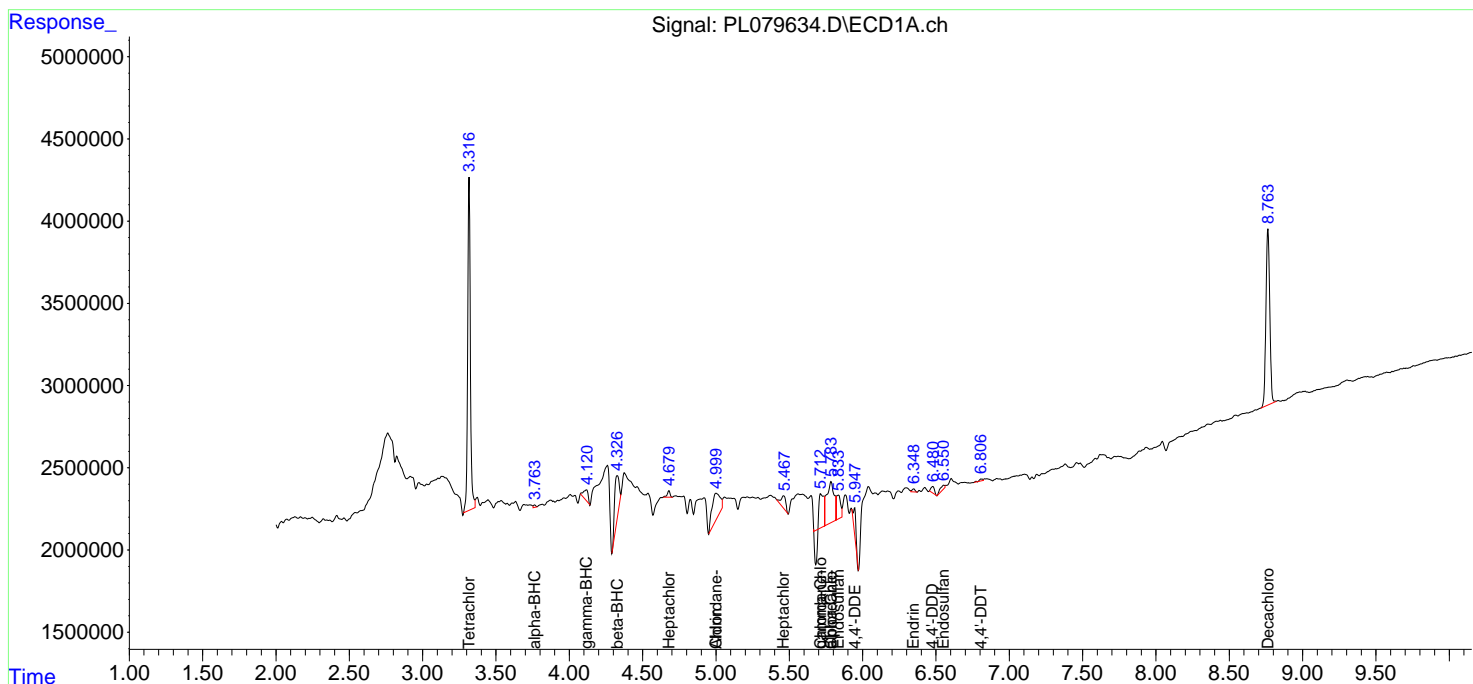
(f)=RT Delta > 1/2 Window (#)=Amounts differ by > 25% (m)=manual int.

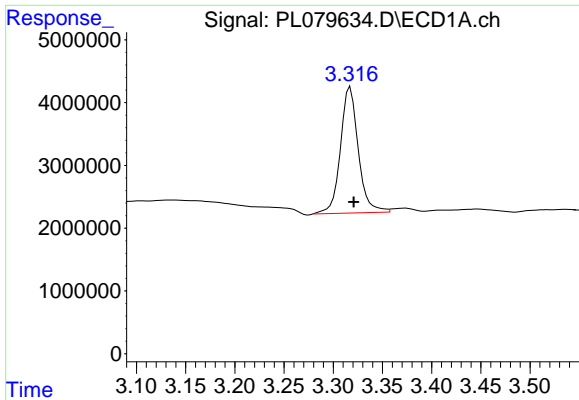
Data Path : Z:\pestpcbsrv\HPCHEM1\ECD_L\Data\PL120822\
 Data File : PL079634.D
 Signal(s) : Signal #1: ECD1A.ch Signal #2: ECD2B.ch
 Acq On : 08 Dec 2022 15:36
 Operator : AR\AJ
 Sample : N5942-01
 Misc :
 ALS Vial : 19 Sample Multiplier: 1

Instrument :
 ECD_L
 ClientSampleId :

Integration File signal 1: autoint1.e
 Integration File signal 2: autoint2.e
 Quant Time: Dec 08 20:20:39 2022
 Quant Method : Z:\pestpcbsrv\HPCHEM1\ECD_L\methods\PL112322.M
 Quant Title : GC Extractables
 QLast Update : Thu Nov 24 00:09:49 2022
 Response via : Initial Calibration
 Integrator: ChemStation

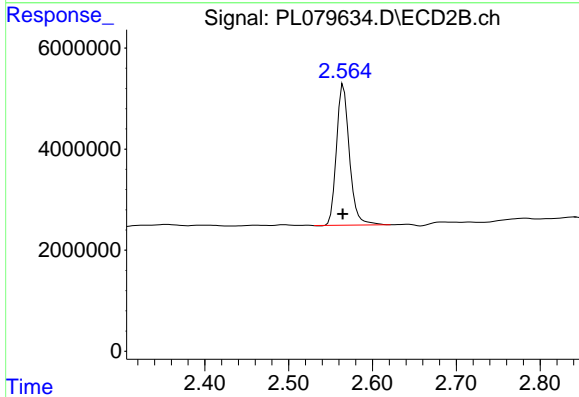
Volume Inj. : 1 µl
 Signal #1 Phase : ZB-MR2 Signal #2 Phase: ZB-MR1
 Signal #1 Info : 30M x 0.32mm x0.2 Signal #2 Info : 30M x 0.32mm x0.5µm



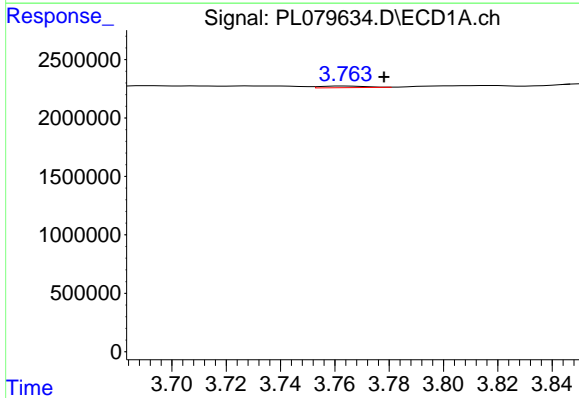


#1 Tetrachloro-m-xylene
 R.T.: 3.317 min
 Delta R.T.: -0.004 min
 Response: 25300974
 Conc: 11.20 ng/ml

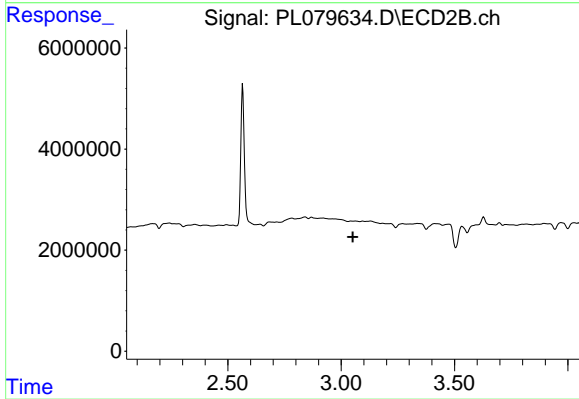
Instrument :
 ECD_L
 ClientSampleId :



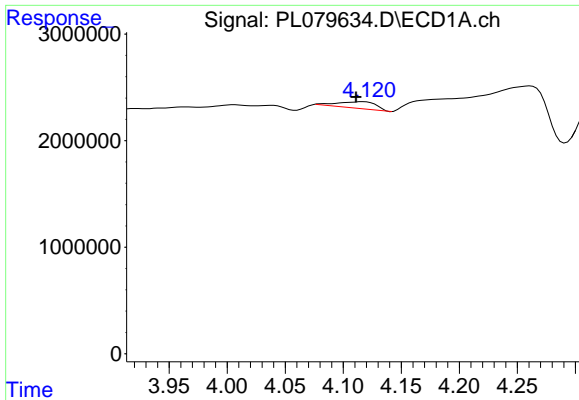
#1 Tetrachloro-m-xylene
 R.T.: 2.565 min
 Delta R.T.: 0.000 min
 Response: 29902192
 Conc: 10.99 ng/ml



#2 alpha-BHC
 R.T.: 3.764 min
 Delta R.T.: -0.014 min
 Response: 158552
 Conc: 0.05 ng/ml

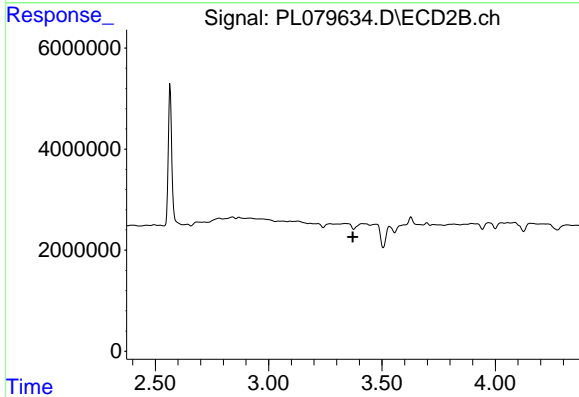


#2 alpha-BHC
 R.T.: 0.000 min
 Exp R.T. : 3.051 min
 Response: 0
 Conc: N.D.

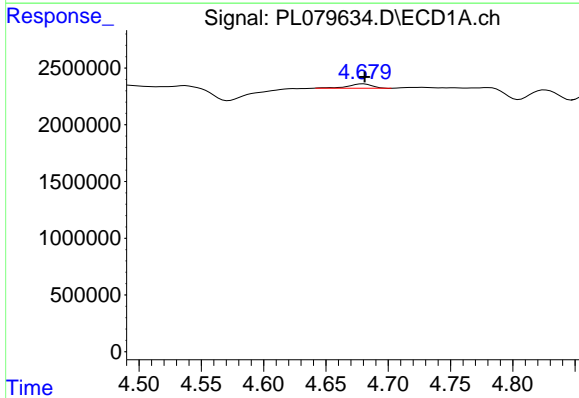


#3 gamma-BHC (Lindane)
 R.T.: 4.117 min
 Delta R.T.: 0.006 min
 Response: 1444350
 Conc: 0.45 ng/ml

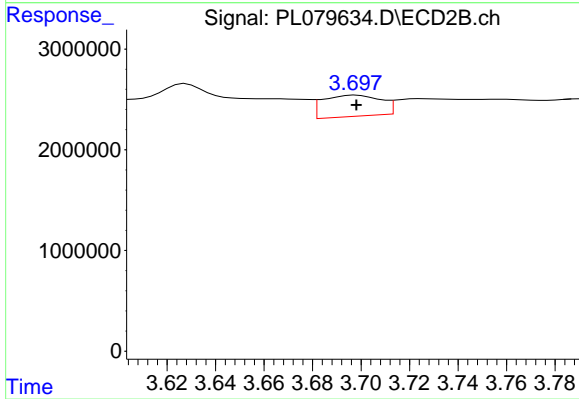
Instrument :
 ECD_L
 ClientSampleId :



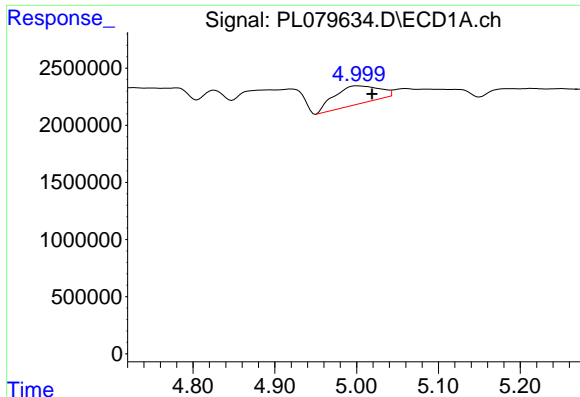
#3 gamma-BHC (Lindane)
 R.T.: 0.000 min
 Exp R.T. : 3.371 min
 Response: 0
 Conc: N.D.



#4 Heptachlor
 R.T.: 4.680 min
 Delta R.T.: -0.001 min
 Response: 525258
 Conc: 0.16 ng/ml

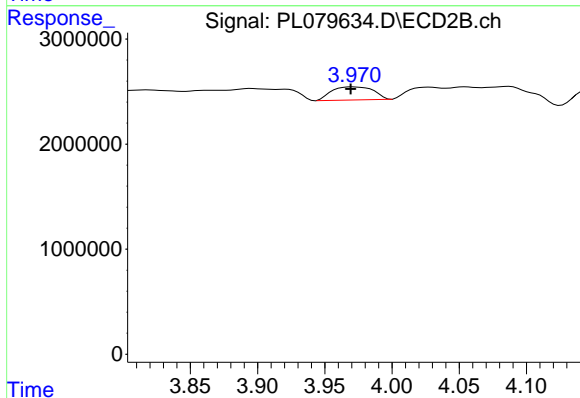


#4 Heptachlor
 R.T.: 3.698 min
 Delta R.T.: 0.000 min
 Response: 3516775
 Conc: 0.91 ng/ml

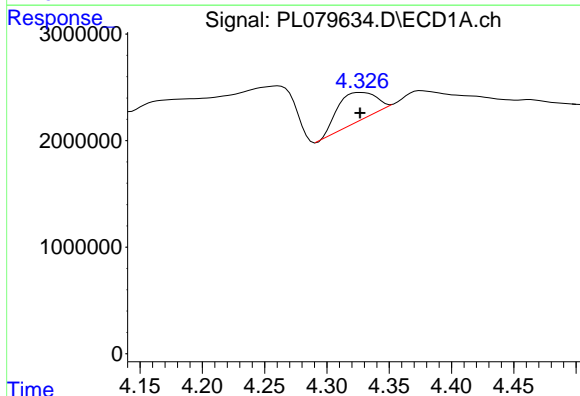


#5 Aldrin
 R.T.: 5.001 min
 Delta R.T.: -0.018 min
 Response: 6031208
 Conc: 1.94 ng/ml

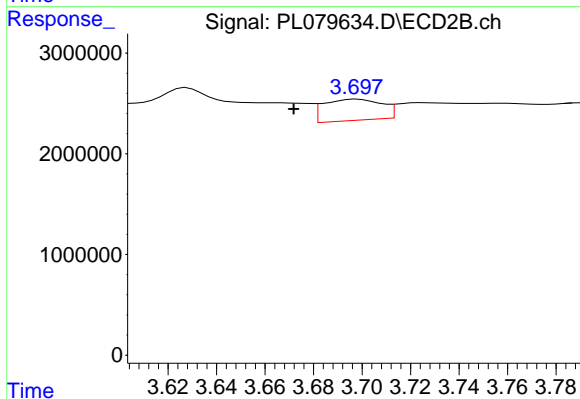
Instrument :
 ECD_L
 ClientSampleId :



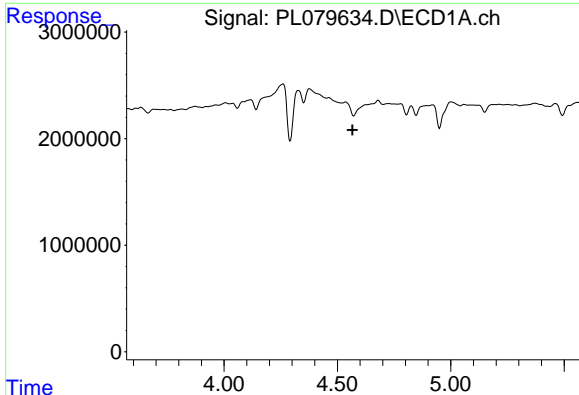
#5 Aldrin
 R.T.: 3.971 min
 Delta R.T.: 0.002 min
 Response: 2674905
 Conc: 0.72 ng/ml



#6 beta-BHC
 R.T.: 4.328 min
 Delta R.T.: 0.001 min
 Response: 5633291
 Conc: 3.99 ng/ml



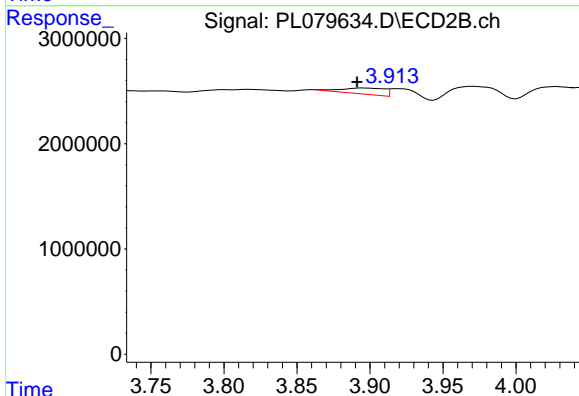
#6 beta-BHC
 R.T.: 3.698 min
 Delta R.T.: 0.026 min
 Response: 3516775
 Conc: 2.32 ng/ml



#7 delta-BHC

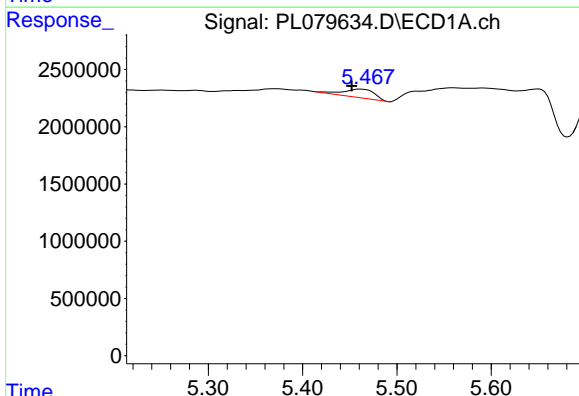
R.T.: 0.000 min
 Exp R.T.: 4.567 min
 Response: 0
 Conc: N.D.

Instrument :
 ECD_L
 ClientSampleId :



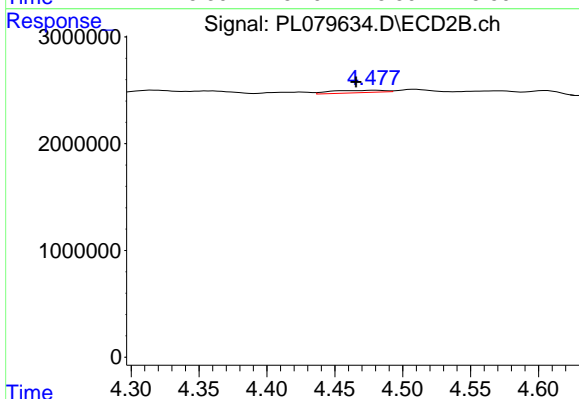
#7 delta-BHC

R.T.: 3.896 min
 Delta R.T.: 0.004 min
 Response: 1193283
 Conc: 0.31 ng/ml



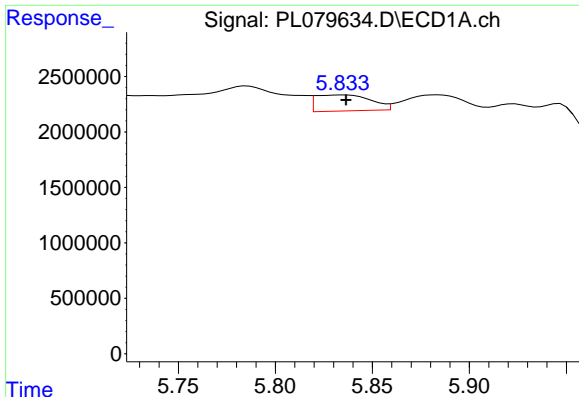
#8 Heptachlor epoxide

R.T.: 5.461 min
 Delta R.T.: 0.009 min
 Response: 1750353
 Conc: 0.61 ng/ml



#8 Heptachlor epoxide

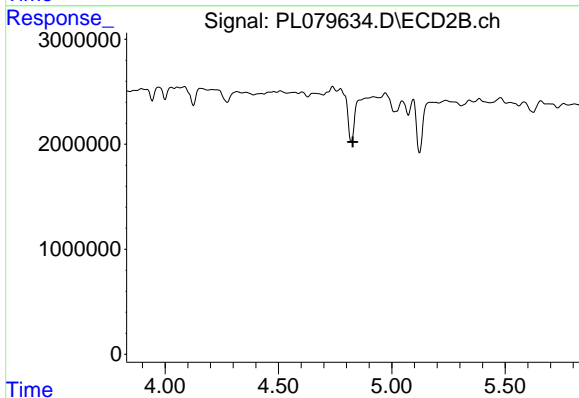
R.T.: 4.480 min
 Delta R.T.: 0.014 min
 Response: 611965
 Conc: 0.18 ng/ml



#9 Endosulfan I

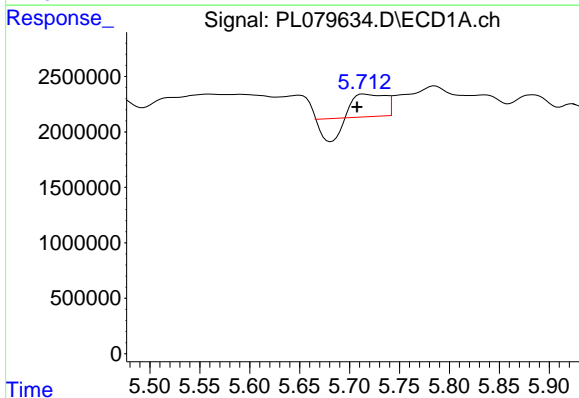
R.T.: 5.836 min
 Delta R.T.: 0.000 min
 Response: 2880720
 Conc: 1.08 ng/ml

Instrument :
 ECD_L
 ClientSampleId :



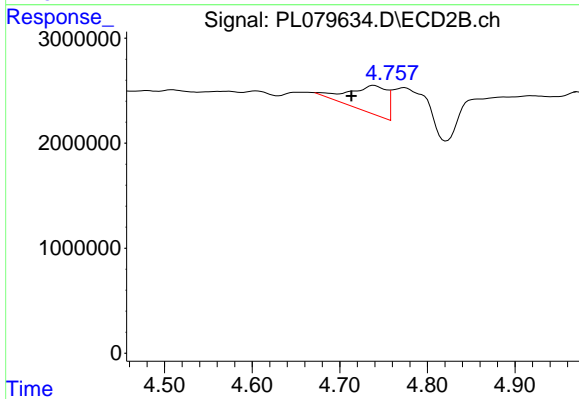
#9 Endosulfan I

R.T.: 0.000 min
 Exp R.T. : 4.828 min
 Response: 0
 Conc: N.D.



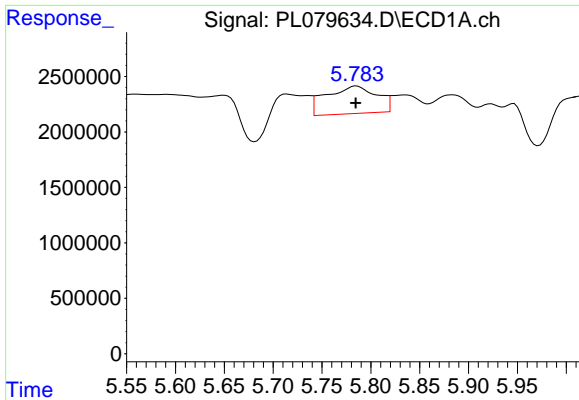
#10 gamma-Chlordane

R.T.: 5.714 min
 Delta R.T.: 0.006 min
 Response: 2661154
 Conc: 0.93 ng/ml



#10 gamma-Chlordane

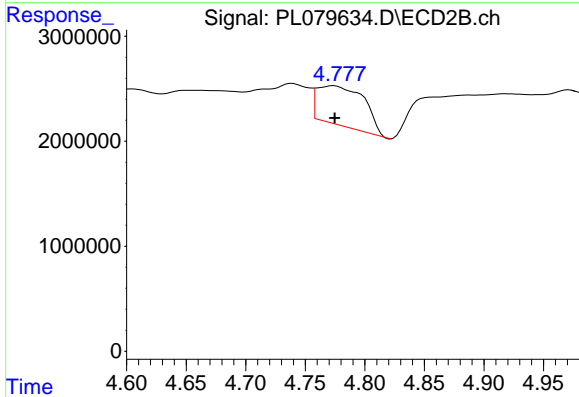
R.T.: 4.739 min
 Delta R.T.: 0.026 min
 Response: 7824138
 Conc: 2.31 ng/ml



#11 alpha-Chlordane

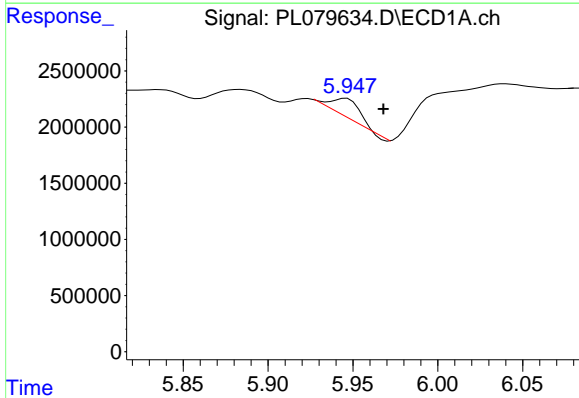
R.T.: 5.785 min
 Delta R.T.: 0.000 min
 Response: 8940829
 Conc: 3.10 ng/ml

Instrument :
 ECD_L
 ClientSampleId :



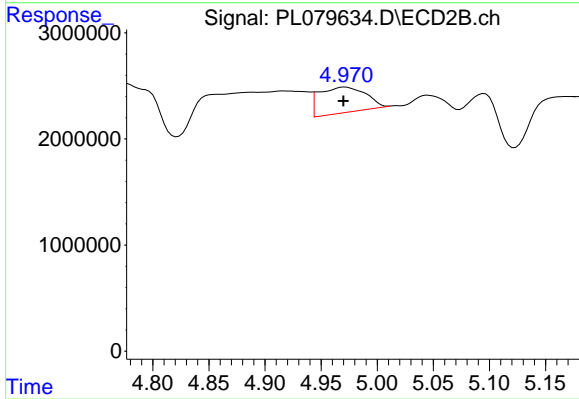
#11 alpha-Chlordane

R.T.: 4.774 min
 Delta R.T.: 0.000 min
 Response: 10436100
 Conc: 3.12 ng/ml



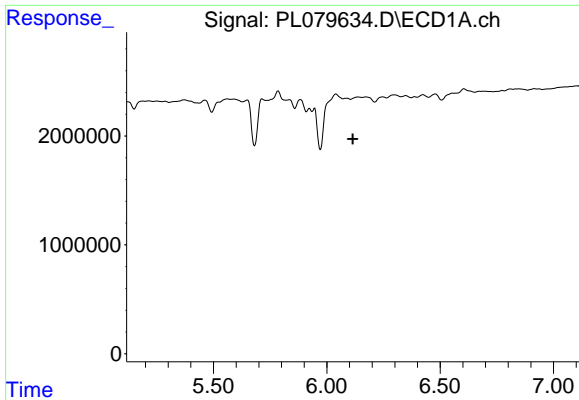
#12 4,4'-DDE

R.T.: 5.946 min
 Delta R.T.: -0.022 min
 Response: 1947963
 Conc: 0.78 ng/ml



#12 4,4'-DDE

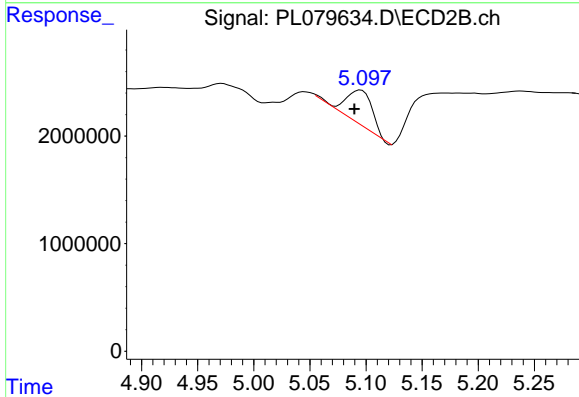
R.T.: 4.971 min
 Delta R.T.: 0.001 min
 Response: 6978463
 Conc: 2.28 ng/ml



#13 Dieldrin

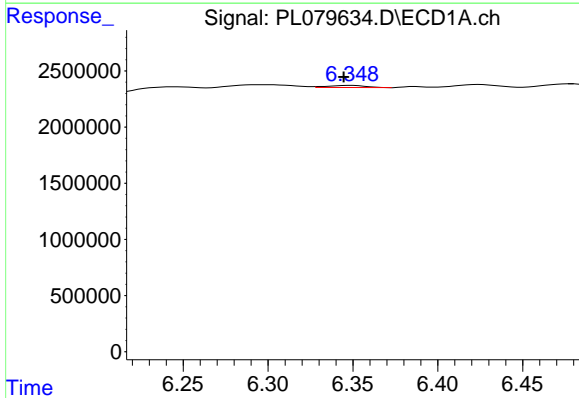
R.T.: 6.137 min
 Delta R.T.: 0.023 min
 Response: -19218
 Conc: N.D.

Instrument :
 ECD_L
 ClientSampleId :



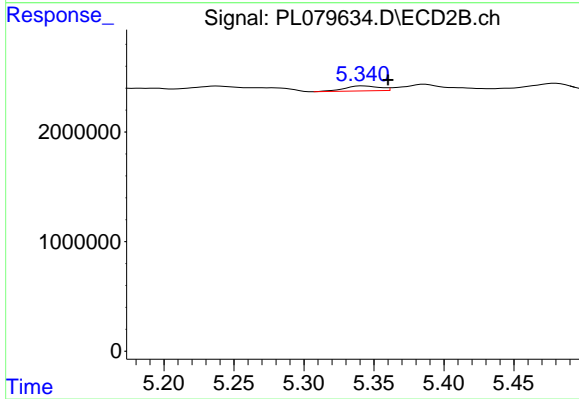
#13 Dieldrin

R.T.: 5.095 min
 Delta R.T.: 0.006 min
 Response: 5413287
 Conc: 1.61 ng/ml



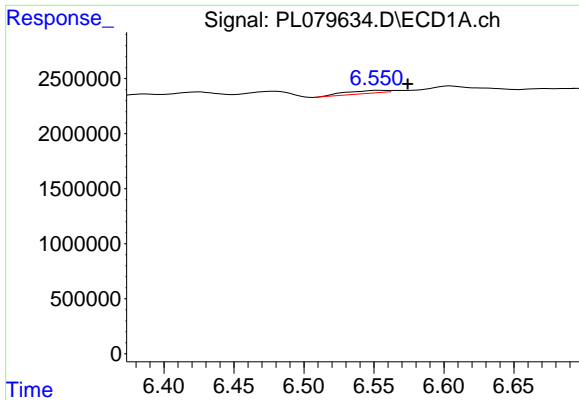
#14 Endrin

R.T.: 6.349 min
 Delta R.T.: 0.004 min
 Response: 277867
 Conc: 0.11 ng/ml



#14 Endrin

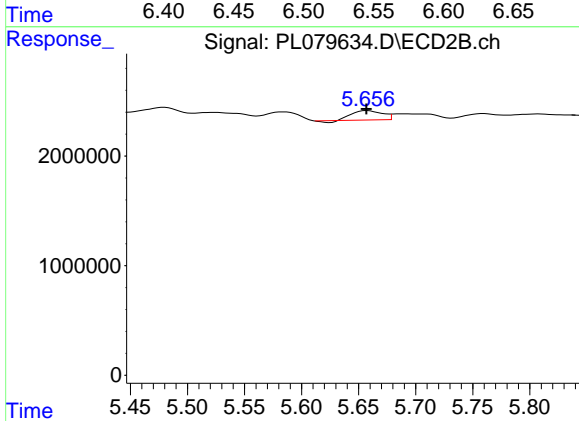
R.T.: 5.342 min
 Delta R.T.: -0.018 min
 Response: 798768
 Conc: 0.26 ng/ml



#15 Endosulfan II

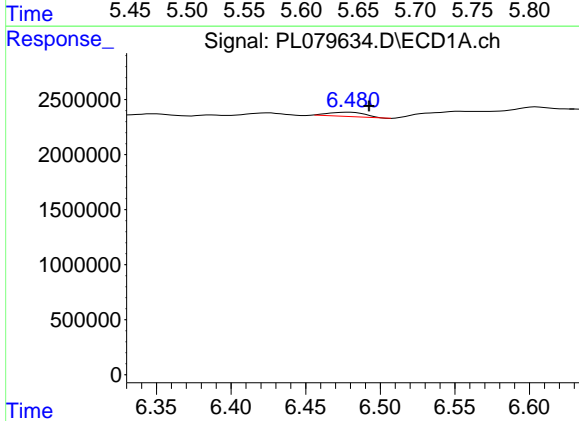
R.T.: 6.554 min
 Delta R.T.: -0.020 min
 Response: 529564
 Conc: 0.23 ng/ml

Instrument :
 ECD_L
 ClientSampleId :



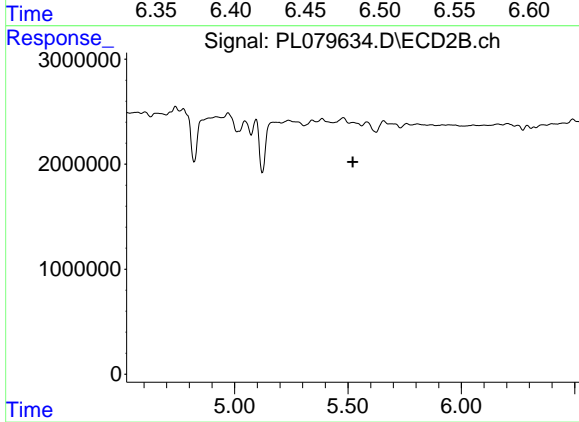
#15 Endosulfan II

R.T.: 5.657 min
 Delta R.T.: 0.000 min
 Response: 1483789
 Conc: 0.53 ng/ml



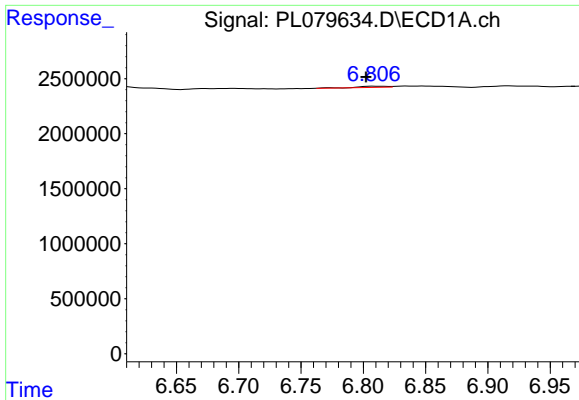
#16 4,4'-DDD

R.T.: 6.479 min
 Delta R.T.: -0.014 min
 Response: 666427
 Conc: 0.34 ng/ml



#16 4,4'-DDD

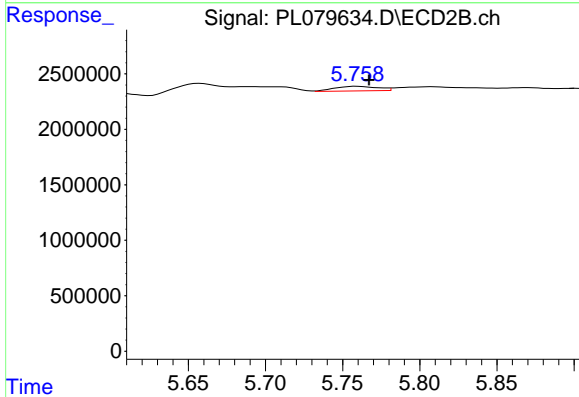
R.T.: 0.000 min
 Exp R.T. : 5.521 min
 Response: 0
 Conc: N.D.



#17 4,4'-DDT

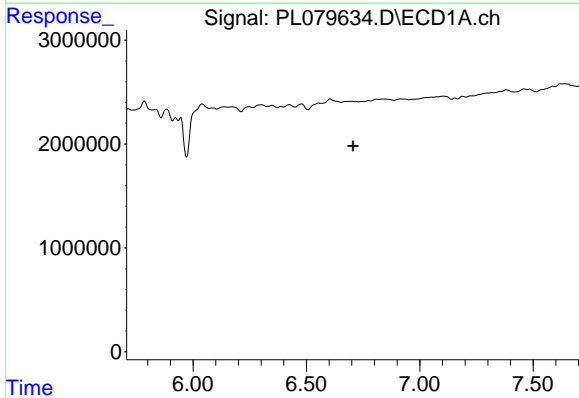
R.T.: 6.809 min
 Delta R.T.: 0.007 min
 Response: 182156
 Conc: 0.08 ng/ml

Instrument :
 ECD_L
 ClientSampleId :



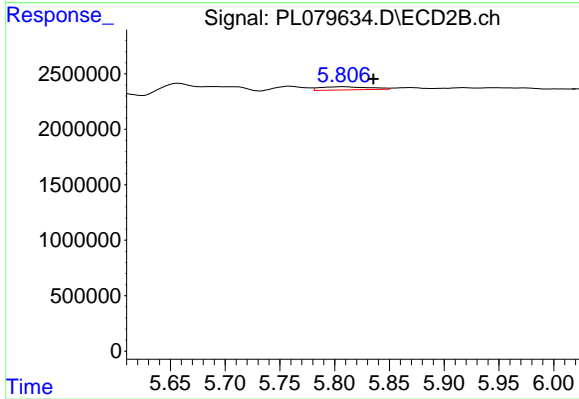
#17 4,4'-DDT

R.T.: 5.760 min
 Delta R.T.: -0.008 min
 Response: 818401
 Conc: 0.31 ng/ml



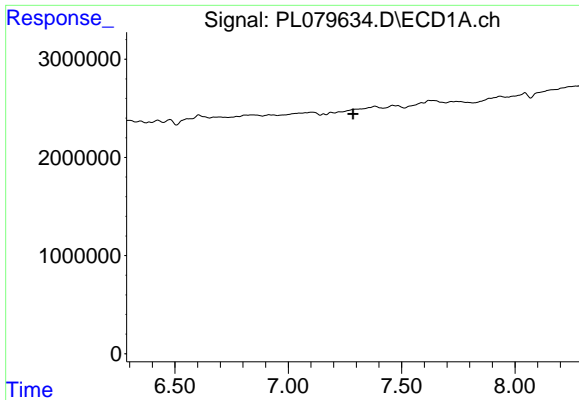
#18 Endrin aldehyde

R.T.: 0.000 min
 Exp R.T. : 6.706 min
 Response: 0
 Conc: N.D.



#18 Endrin aldehyde

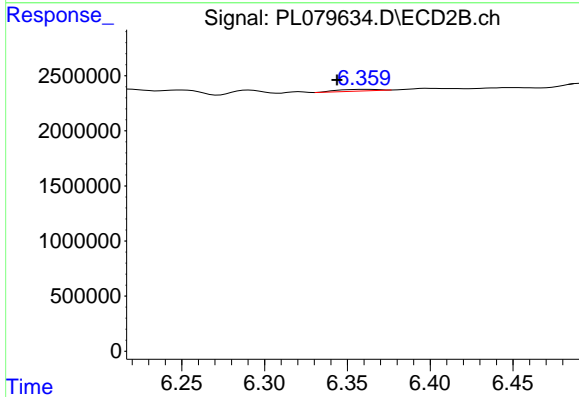
R.T.: 5.807 min
 Delta R.T.: -0.028 min
 Response: 911033
 Conc: 0.43 ng/ml



#20 Methoxychlor

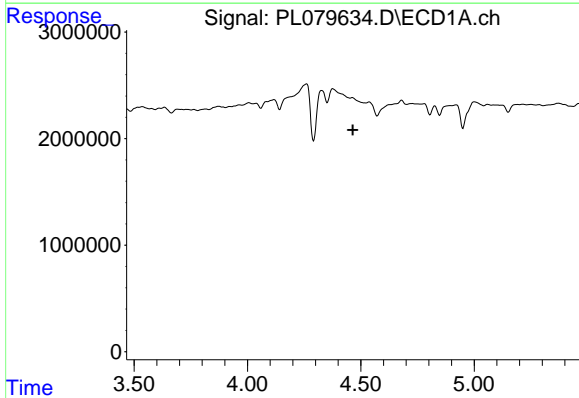
R.T.: 0.000 min
 Exp R.T. : 7.287 min
 Response: 0
 Conc: N.D.

Instrument :
 ECD_L
 ClientSampleId :



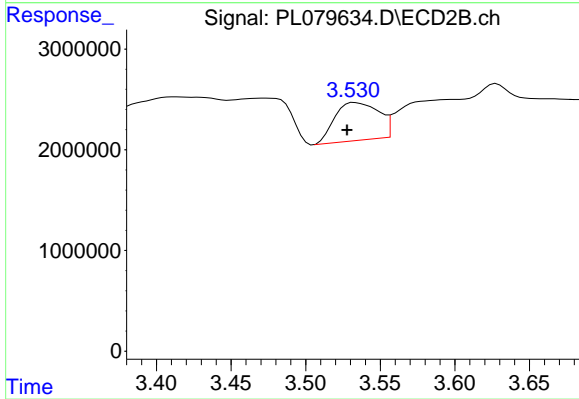
#20 Methoxychlor

R.T.: 6.361 min
 Delta R.T.: 0.017 min
 Response: 247000
 Conc: 0.18 ng/ml



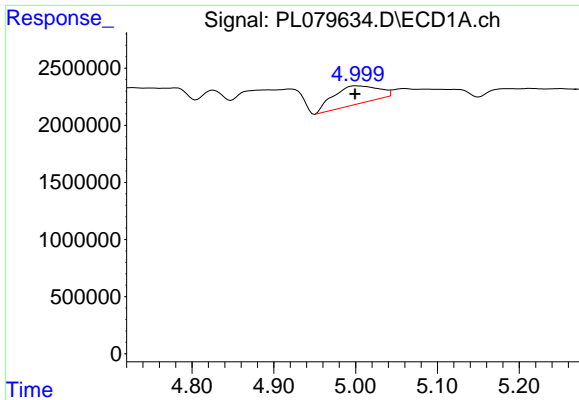
#23 Chlordane-1

R.T.: 0.000 min
 Exp R.T. : 4.465 min
 Response: 0
 Conc: N.D.



#23 Chlordane-1

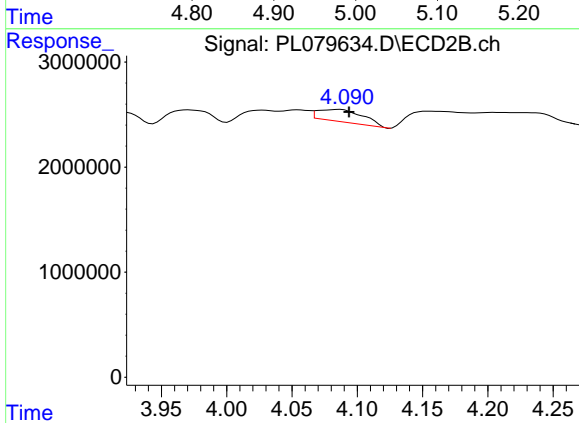
R.T.: 3.533 min
 Delta R.T.: 0.005 min
 Response: 7669063
 Conc: 72.11 ng/ml



#24 Chlordane-2

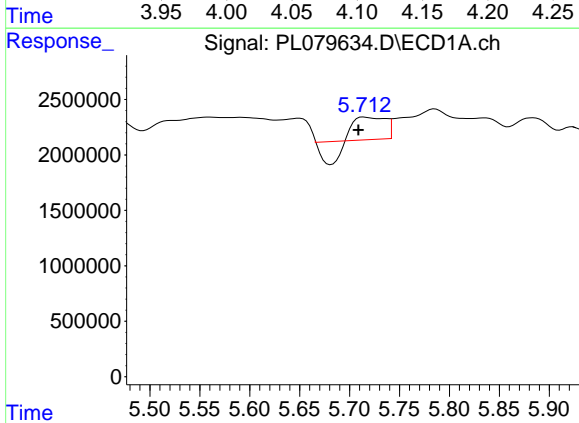
R.T.: 5.001 min
 Delta R.T.: 0.002 min
 Response: 6031208
 Conc: 57.24 ng/ml

Instrument :
 ECD_L
 ClientSampleId :



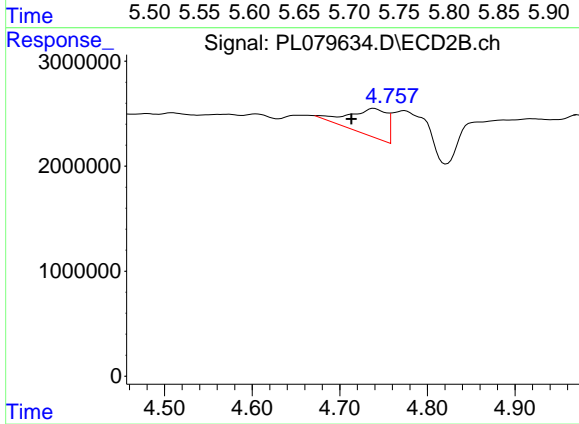
#24 Chlordane-2

R.T.: 4.086 min
 Delta R.T.: -0.008 min
 Response: 2795432
 Conc: 23.88 ng/ml



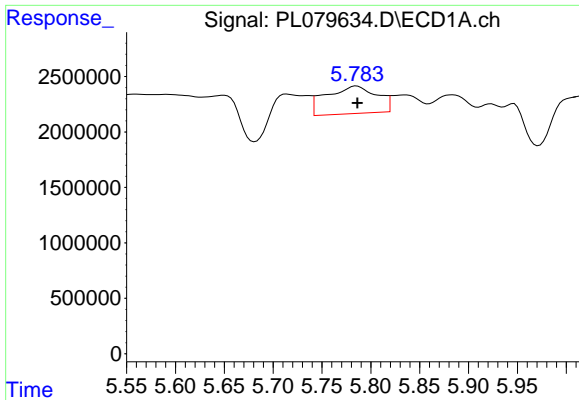
#25 Chlordane-3

R.T.: 5.714 min
 Delta R.T.: 0.005 min
 Response: 2661154
 Conc: 6.41 ng/ml



#25 Chlordane-3

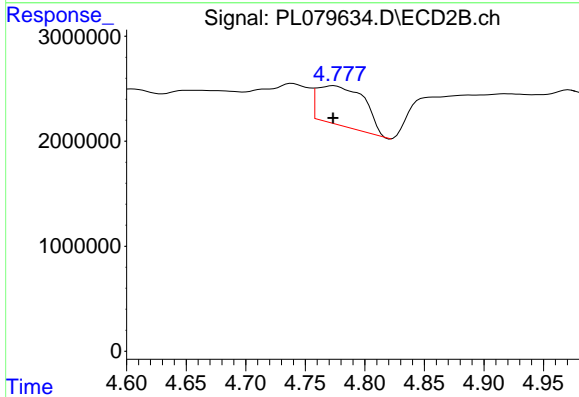
R.T.: 4.739 min
 Delta R.T.: 0.026 min
 Response: 7824138
 Conc: 23.40 ng/ml



#26 Chlordane-4

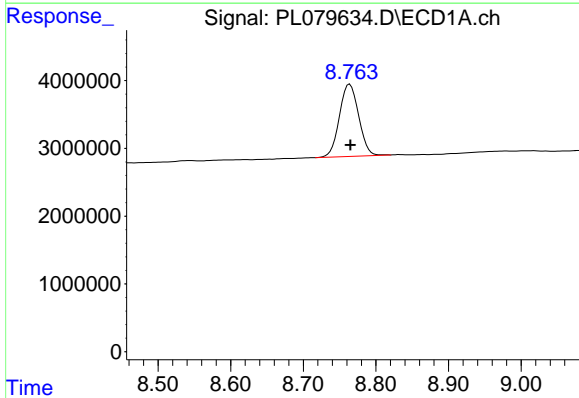
R.T.: 5.785 min
 Delta R.T.: 0.000 min
 Response: 8940829
 Conc: 17.57 ng/ml

Instrument :
 ECD_L
 ClientSampleId :



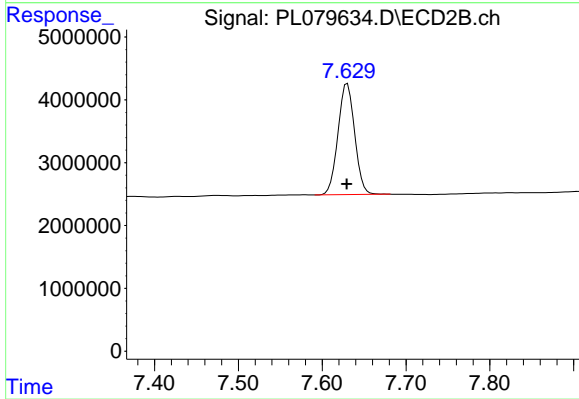
#26 Chlordane-4

R.T.: 4.774 min
 Delta R.T.: 0.000 min
 Response: 10436100
 Conc: 28.80 ng/ml



#28 Decachlorobiphenyl

R.T.: 8.764 min
 Delta R.T.: -0.001 min
 Response: 19661676
 Conc: 10.12 ng/ml



#28 Decachlorobiphenyl

R.T.: 7.630 min
 Delta R.T.: 0.000 min
 Response: 24436732
 Conc: 10.40 ng/ml