

Data Path : Z:\pestpcbsrv\HPCHEM1\ECD\_L\Data\PL120920\  
 Data File : PL063409.D  
 Signal(s) : Signal #1: ECD1A.ch Signal #2: ECD2B.ch  
 Acq On : 09 Dec 2020 09:16  
 Operator : DD\AJ  
 Sample : PSTDCCC050  
 Misc :  
 ALS Vial : 4 Sample Multiplier: 1

Instrument :  
 ECD\_L  
 ClientSampleId :  
 PSTDCCC050

Integration File signal 1: autoint1.e  
 Integration File signal 2: autoint2.e  
 Quant Time: Dec 09 14:02:21 2020  
 Quant Method : Z:\pestpcbsrv\HPCHEM1\ECD\_L\methods\PL112320.M  
 Quant Title : GC Extractables  
 QLast Update : Tue Nov 24 01:53:58 2020  
 Response via : Initial Calibration  
 Integrator: ChemStation

Volume Inj. : 1 µl  
 Signal #1 Phase : ZB-MR2 Signal #2 Phase: ZB-MR1  
 Signal #1 Info : 30M x 0.32mm x0.2 Signal #2 Info : 30M x 0.32mm x0.5µm

Compound	RT#1	RT#2	Resp#1	Resp#2	ng/ml	ng/ml
System Monitoring Compounds						
1) SA Tetrachlo...	3.410	3.950	88543589	171.0E6	51.990	52.407
28) SA Decachlor...	8.128	8.993	86723367	119.7E6	46.439	50.320
Target Compounds						
2) A alpha-BHC	3.842	4.337	131.4E6	255.6E6	53.218	52.535
3) MA gamma-BHC...	4.122	4.620	119.0E6	238.5E6	52.083	52.176
4) MA Heptachlor	4.418	5.125	110.1E6	218.4E6	52.473	52.409
5) MB Aldrin	4.663	5.428	98881061	207.9E6	52.822	52.643
6) B beta-BHC	4.372	4.791	49315573	102.4E6	52.758	50.238
7) B delta-BHC	4.572	5.006	111.5E6	213.8E6	52.224	56.148
8) B Heptachlo...	5.102	5.814	95978064	188.8E6	53.033	54.201
9) A Endosulfan I	5.438	6.169	89364457	173.2E6	52.791	51.307
10) B gamma-Chl...	5.328	6.048	95349847	188.1E6	52.660	53.152
11) B alpha-Chl...	5.385	6.120	95428387	186.5E6	52.771	51.692
12) B 4,4'-DDE	5.550	6.280	87289698	182.7E6	52.673	52.084
13) MA Dieldrin	5.679	6.426	93381580	179.1E6	52.679	52.124
14) MA Endrin	5.933	6.643	81398433	146.9E6	48.470	49.758
15) B Endosulfa...	6.206	6.854	86256547	149.6E6	46.930	45.250
16) A 4,4'-DDD	6.063	6.769	77687762	141.1E6	53.694	52.804
17) MA 4,4'-DDT	6.302	7.068	67595388	123.1E6	50.259	48.208
18) B Endrin al...	6.373	6.978	74649044	127.0E6	50.098	51.304
19) B Endosulfa...	6.585	7.202	85318401	137.8E6	51.833	50.595
20) A Methoxychlor	6.846	7.528	42516583	64934777	49.623	47.355
21) B Endrin ke...	7.071	7.670	101.6E6	142.6E6	54.287	51.412
22) Mirex	7.258	8.123	76091482	96096963	51.170	49.196
24) Chlordane-2	0.000	5.428f	0	207.9E6	N.D.	1767.119 #
25) Chlordane-3	5.328	6.048	95349847	188.1E6	607.328	424.045 #
26) Chlordane-4	5.385	6.120	95428387	186.5E6	725.922	347.777 #
27) Chlordane-5	6.206	0.000	86256547	0	1481.543	N.D. #

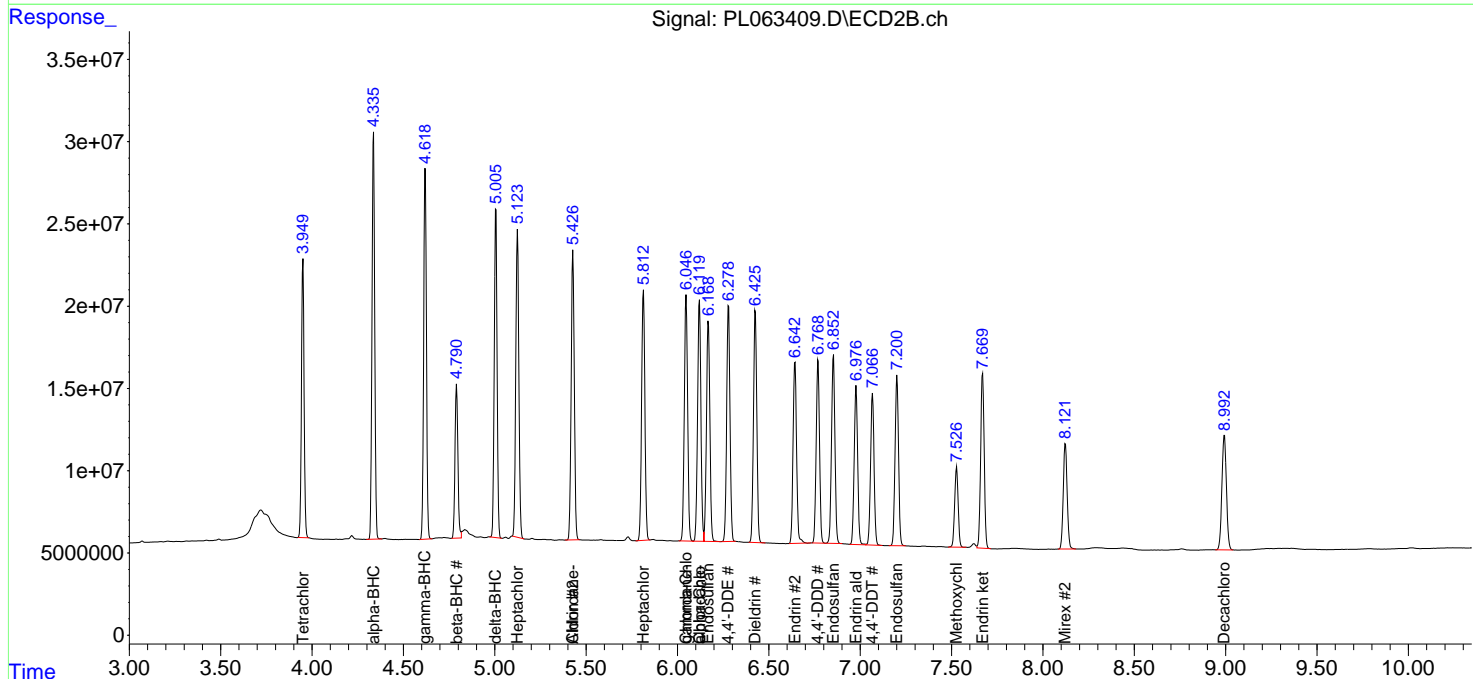
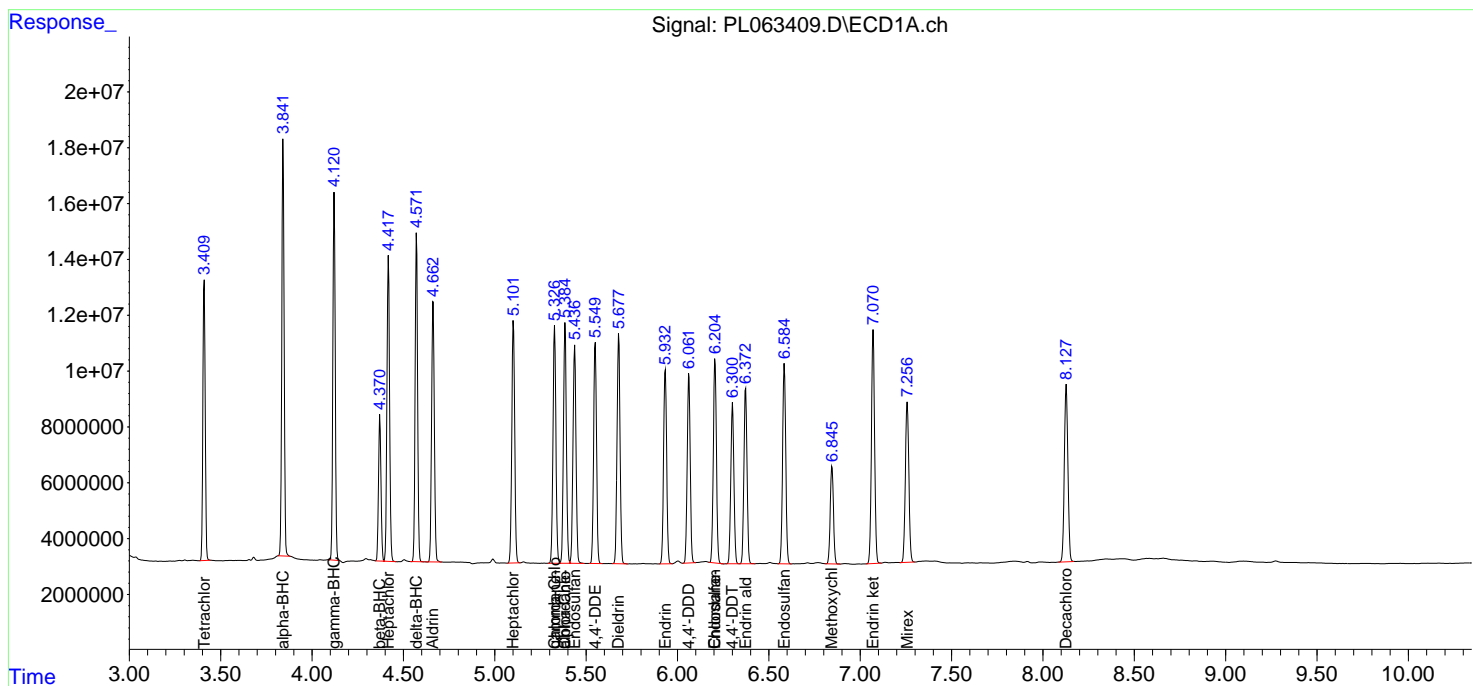
(f)=RT Delta > 1/2 Window (#)=Amounts differ by > 25% (m)=manual int.

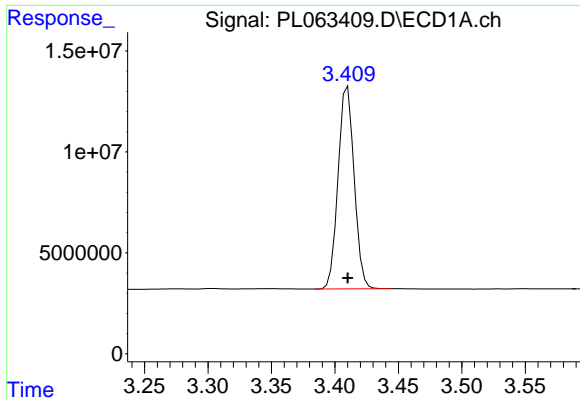
Data Path : Z:\pestpcbsrv\HPCHEM1\ECD\_L\Data\PL120920\  
 Data File : PL063409.D  
 Signal(s) : Signal #1: ECD1A.ch Signal #2: ECD2B.ch  
 Acq On : 09 Dec 2020 09:16  
 Operator : DD\AJ  
 Sample : PSTDCCC050  
 Misc :  
 ALS Vial : 4 Sample Multiplier: 1

Instrument :  
 ECD\_L  
 ClientSampled :  
 PSTDCCC050

Integration File signal 1: autoint1.e  
 Integration File signal 2: autoint2.e  
 Quant Time: Dec 09 14:02:21 2020  
 Quant Method : Z:\pestpcbsrv\HPCHEM1\ECD\_L\methods\PL112320.M  
 Quant Title : GC Extractables  
 QLast Update : Tue Nov 24 01:53:58 2020  
 Response via : Initial Calibration  
 Integrator: ChemStation

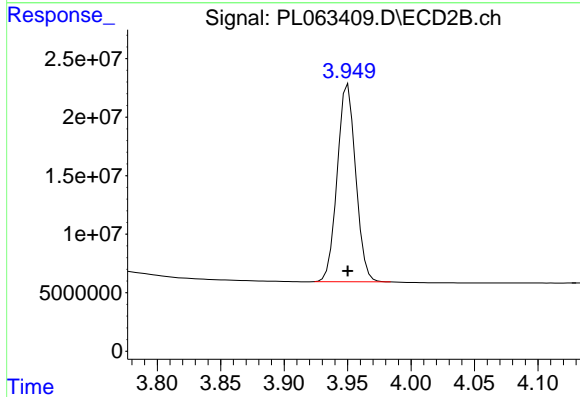
Volume Inj. : 1 µl  
 Signal #1 Phase : ZB-MR2 Signal #2 Phase: ZB-MR1  
 Signal #1 Info : 30M x 0.32mm x0.2 Signal #2 Info : 30M x 0.32mm x0.5µm



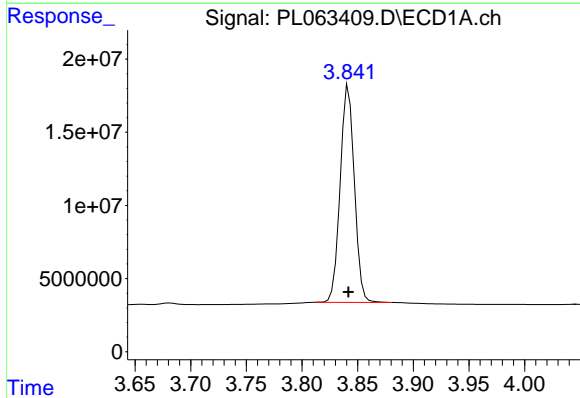


#1 Tetrachloro-m-xylene  
 R.T.: 3.410 min  
 Delta R.T.: 0.000 min  
 Response: 88543589  
 Conc: 51.99 ng/ml

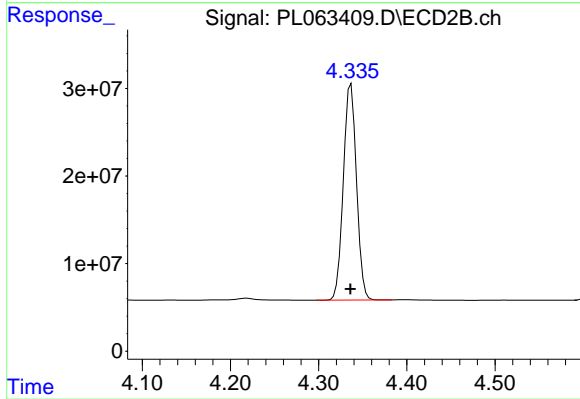
Instrument :  
 ECD\_L  
 ClientSampleId :  
 PSTDCCC050



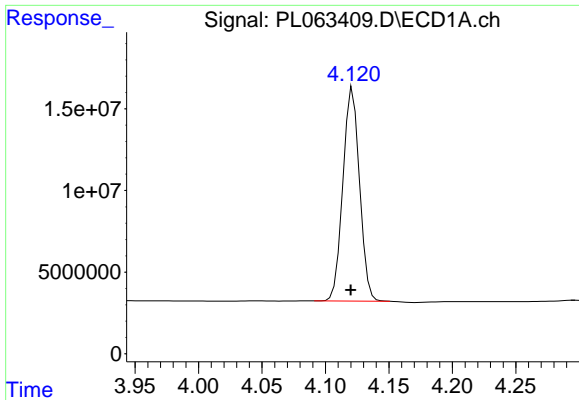
#1 Tetrachloro-m-xylene  
 R.T.: 3.950 min  
 Delta R.T.: 0.000 min  
 Response: 171042932  
 Conc: 52.41 ng/ml



#2 alpha-BHC  
 R.T.: 3.842 min  
 Delta R.T.: 0.000 min  
 Response: 131448044  
 Conc: 53.22 ng/ml

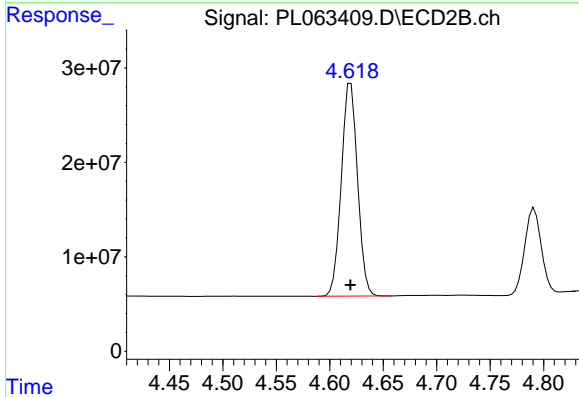


#2 alpha-BHC  
 R.T.: 4.337 min  
 Delta R.T.: 0.000 min  
 Response: 255622263  
 Conc: 52.53 ng/ml

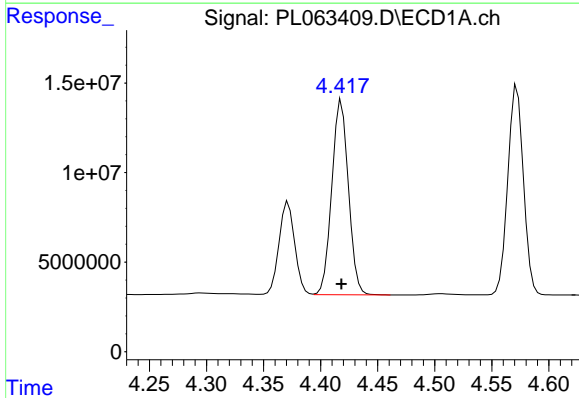


#3 gamma-BHC (Lindane)  
 R.T.: 4.122 min  
 Delta R.T.: 0.002 min  
 Response: 118984087  
 Conc: 52.08 ng/ml

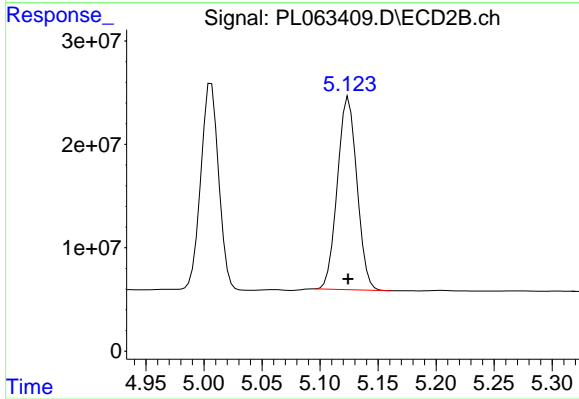
Instrument :  
 ECD\_L  
 ClientSampleId :  
 PSTDCCC050



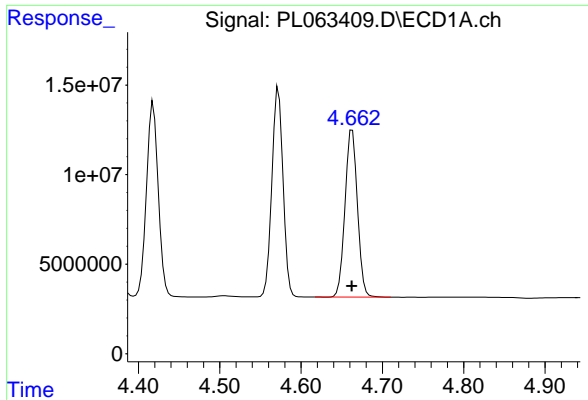
#3 gamma-BHC (Lindane)  
 R.T.: 4.620 min  
 Delta R.T.: 0.000 min  
 Response: 238529951  
 Conc: 52.18 ng/ml



#4 Heptachlor  
 R.T.: 4.418 min  
 Delta R.T.: 0.000 min  
 Response: 110133450  
 Conc: 52.47 ng/ml

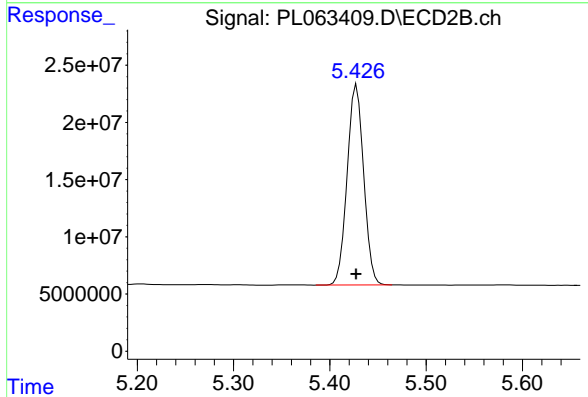


#4 Heptachlor  
 R.T.: 5.125 min  
 Delta R.T.: 0.000 min  
 Response: 218415665  
 Conc: 52.41 ng/ml

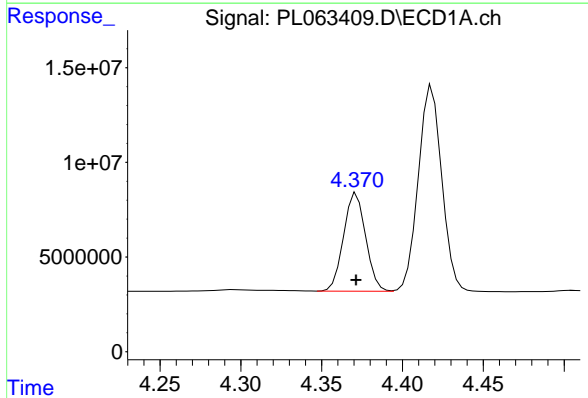


#5 Aldrin  
 R.T.: 4.663 min  
 Delta R.T.: 0.000 min  
 Response: 98881061  
 Conc: 52.82 ng/ml

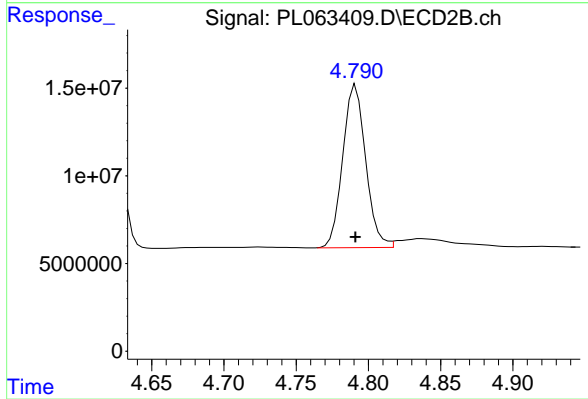
Instrument :  
 ECD\_L  
 ClientSampleId :  
 PSTDCCC050



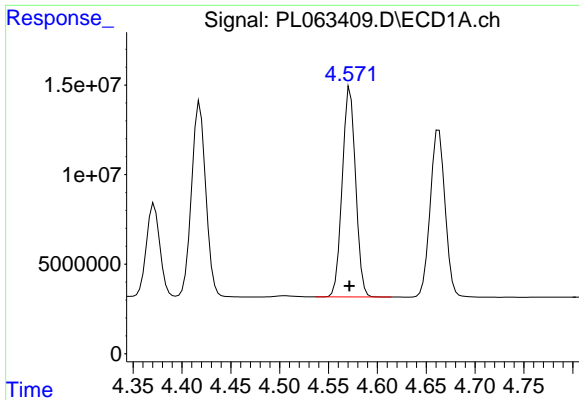
#5 Aldrin  
 R.T.: 5.428 min  
 Delta R.T.: 0.000 min  
 Response: 207867280  
 Conc: 52.64 ng/ml



#6 beta-BHC  
 R.T.: 4.372 min  
 Delta R.T.: 0.000 min  
 Response: 49315573  
 Conc: 52.76 ng/ml

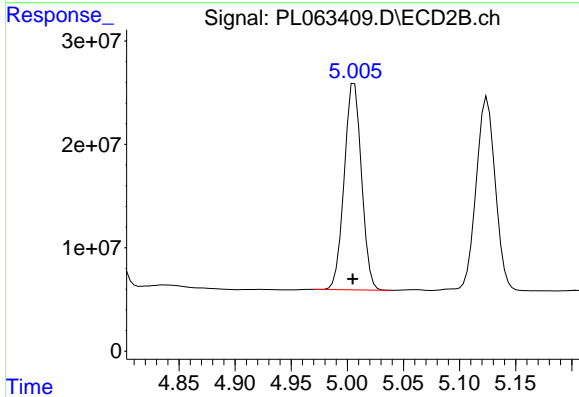


#6 beta-BHC  
 R.T.: 4.791 min  
 Delta R.T.: 0.000 min  
 Response: 102432663  
 Conc: 50.24 ng/ml

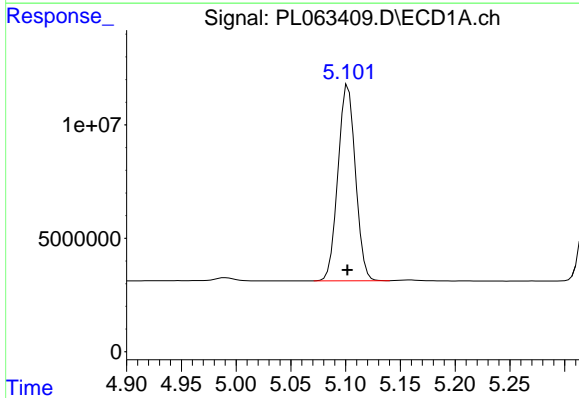


#7 delta-BHC  
 R.T.: 4.572 min  
 Delta R.T.: 0.000 min  
 Response: 111479879  
 Conc: 52.22 ng/ml

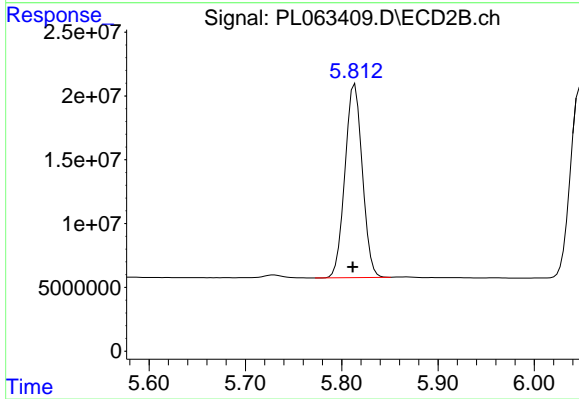
Instrument :  
 ECD\_L  
 ClientSampleId :  
 PSTDCCC050



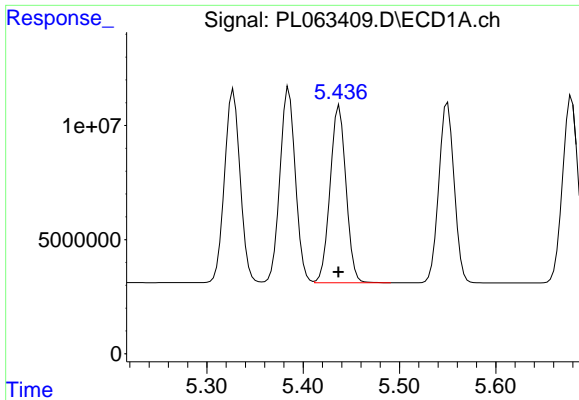
#7 delta-BHC  
 R.T.: 5.006 min  
 Delta R.T.: 0.001 min  
 Response: 213784791  
 Conc: 56.15 ng/ml



#8 Heptachlor epoxide  
 R.T.: 5.102 min  
 Delta R.T.: 0.000 min  
 Response: 95978064  
 Conc: 53.03 ng/ml

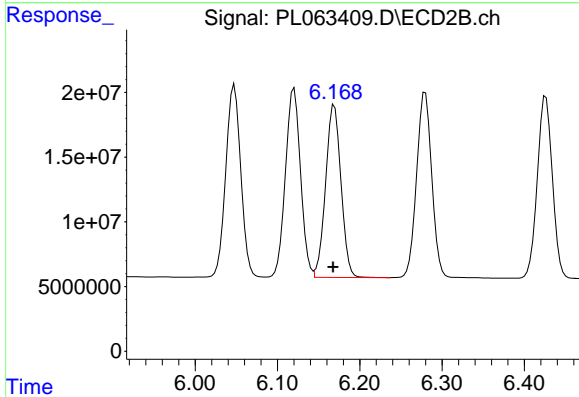


#8 Heptachlor epoxide  
 R.T.: 5.814 min  
 Delta R.T.: 0.002 min  
 Response: 188807733  
 Conc: 54.20 ng/ml

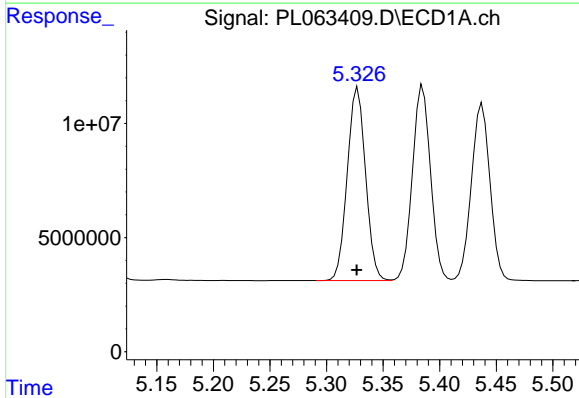


#9 Endosulfan I  
 R.T.: 5.438 min  
 Delta R.T.: 0.000 min  
 Response: 89364457  
 Conc: 52.79 ng/ml

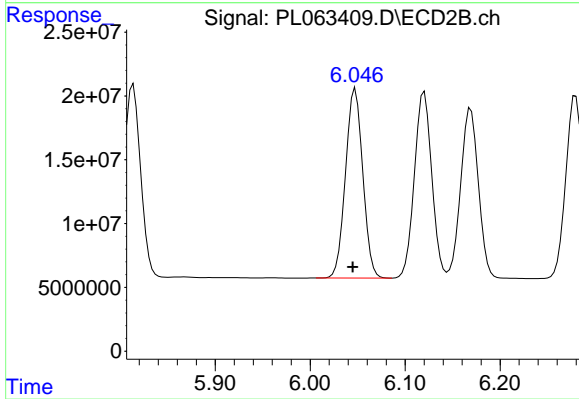
Instrument :  
 ECD\_L  
 ClientSampleId :  
 PSTDCCC050



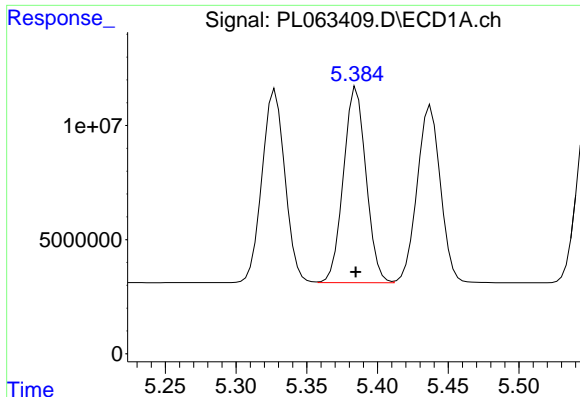
#9 Endosulfan I  
 R.T.: 6.169 min  
 Delta R.T.: 0.002 min  
 Response: 173220447  
 Conc: 51.31 ng/ml



#10 gamma-Chlordane  
 R.T.: 5.328 min  
 Delta R.T.: 0.000 min  
 Response: 95349847  
 Conc: 52.66 ng/ml



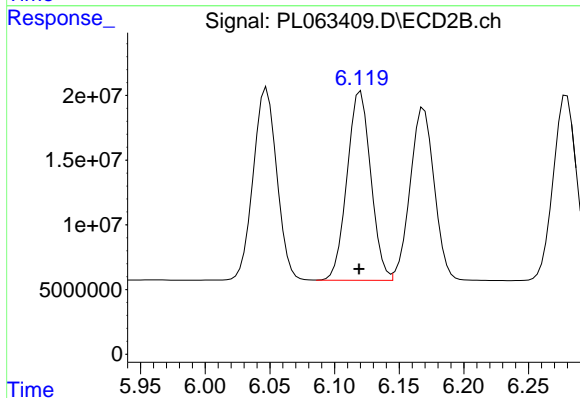
#10 gamma-Chlordane  
 R.T.: 6.048 min  
 Delta R.T.: 0.003 min  
 Response: 188055478  
 Conc: 53.15 ng/ml



#11 alpha-Chlordane

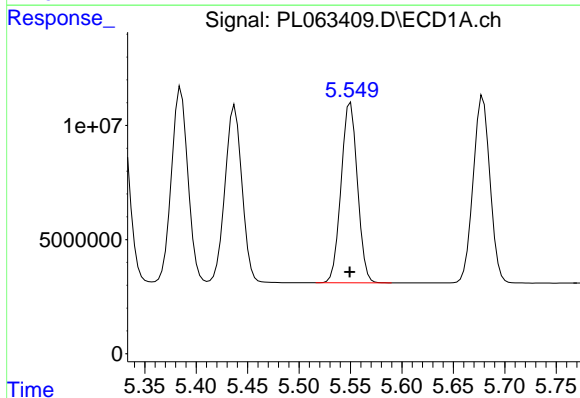
R.T.: 5.385 min  
Delta R.T.: 0.000 min  
Response: 95428387  
Conc: 52.77 ng/ml

Instrument :  
ECD\_L  
ClientSampleId :  
PSTDCCC050



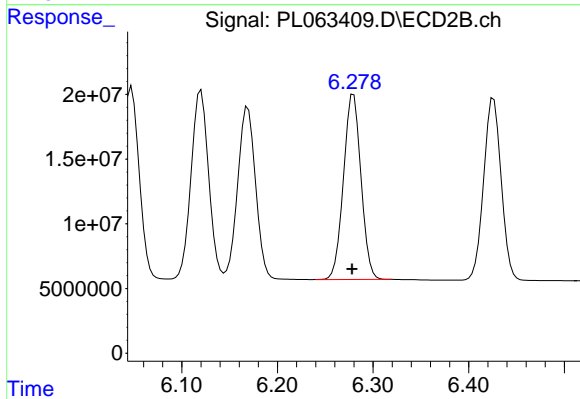
#11 alpha-Chlordane

R.T.: 6.120 min  
Delta R.T.: 0.001 min  
Response: 186528133  
Conc: 51.69 ng/ml



#12 4,4'-DDE

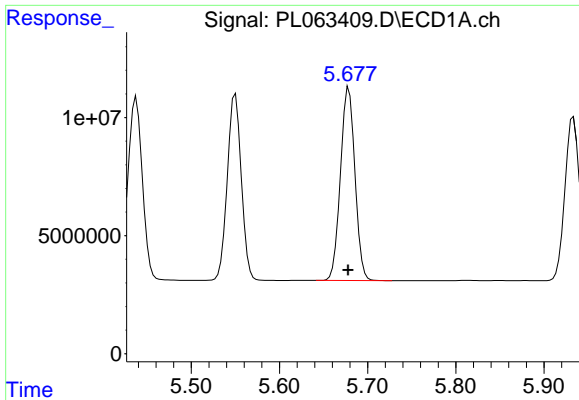
R.T.: 5.550 min  
Delta R.T.: 0.000 min  
Response: 87289698  
Conc: 52.67 ng/ml



#12 4,4'-DDE

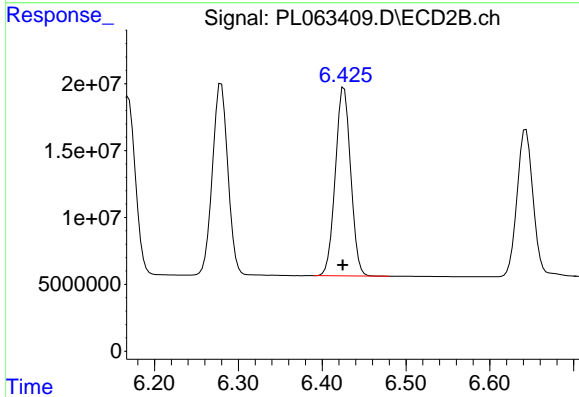
R.T.: 6.280 min  
Delta R.T.: 0.002 min  
Response: 182727375  
Conc: 52.08 ng/ml



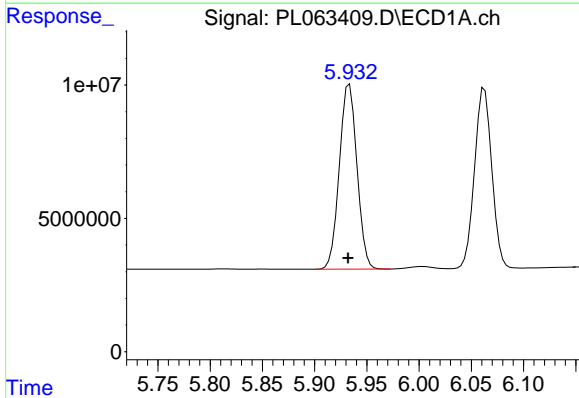


#13 Dieldrin  
 R.T.: 5.679 min  
 Delta R.T.: 0.001 min  
 Response: 93381580  
 Conc: 52.68 ng/ml

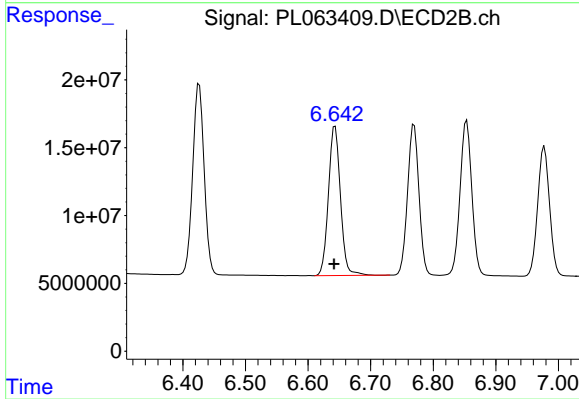
Instrument :  
 ECD\_L  
 ClientSampled :  
 PSTDCCC050



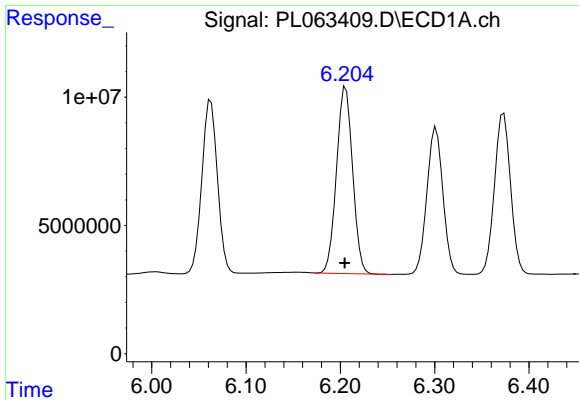
#13 Dieldrin  
 R.T.: 6.426 min  
 Delta R.T.: 0.001 min  
 Response: 179127641  
 Conc: 52.12 ng/ml



#14 Endrin  
 R.T.: 5.933 min  
 Delta R.T.: 0.001 min  
 Response: 81398433  
 Conc: 48.47 ng/ml

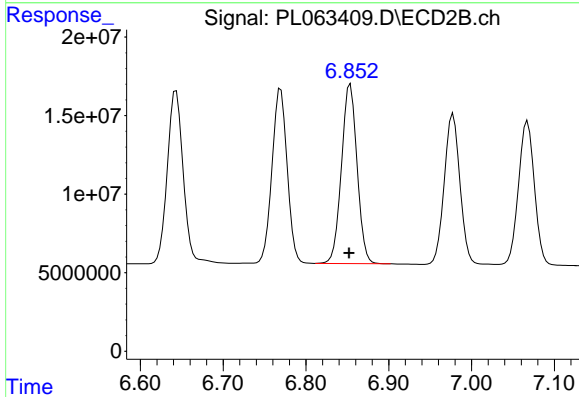


#14 Endrin  
 R.T.: 6.643 min  
 Delta R.T.: 0.001 min  
 Response: 146922405  
 Conc: 49.76 ng/ml

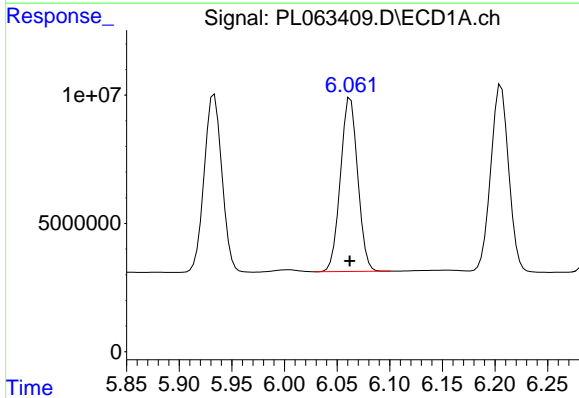


#15 Endosulfan II  
 R.T.: 6.206 min  
 Delta R.T.: 0.001 min  
 Response: 86256547  
 Conc: 46.93 ng/ml

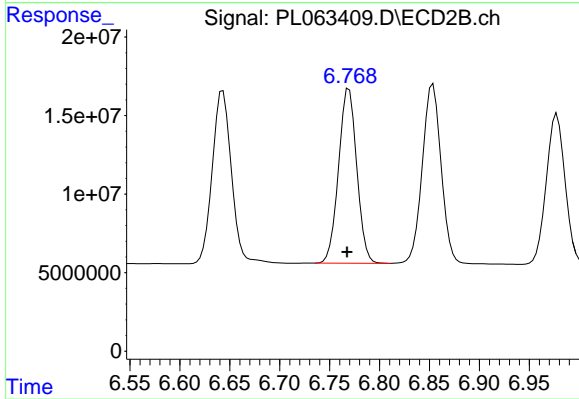
Instrument :  
 ECD\_L  
 ClientSampleId :  
 PSTDCCC050



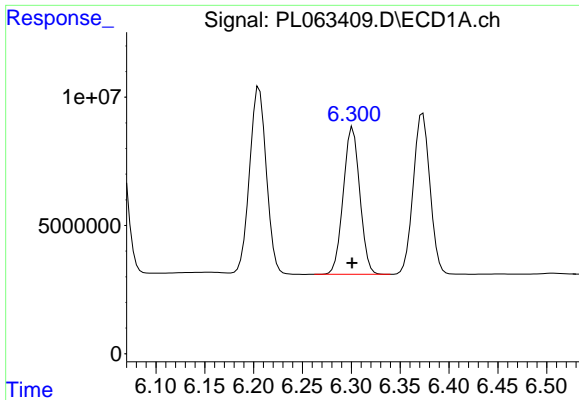
#15 Endosulfan II  
 R.T.: 6.854 min  
 Delta R.T.: 0.001 min  
 Response: 149597643  
 Conc: 45.25 ng/ml



#16 4,4'-DDD  
 R.T.: 6.063 min  
 Delta R.T.: 0.000 min  
 Response: 77687762  
 Conc: 53.69 ng/ml

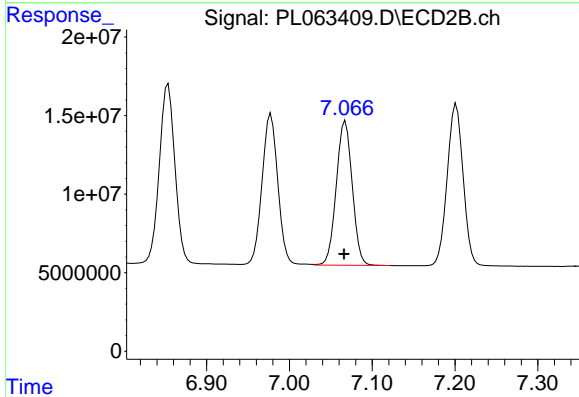


#16 4,4'-DDD  
 R.T.: 6.769 min  
 Delta R.T.: 0.002 min  
 Response: 141106479  
 Conc: 52.80 ng/ml

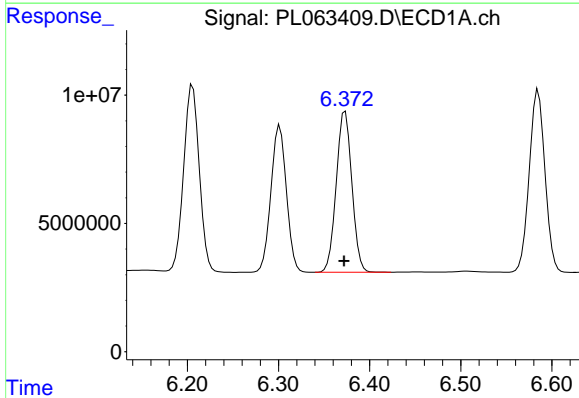


#17 4,4'-DDT  
 R.T.: 6.302 min  
 Delta R.T.: 0.000 min  
 Response: 67595388  
 Conc: 50.26 ng/ml

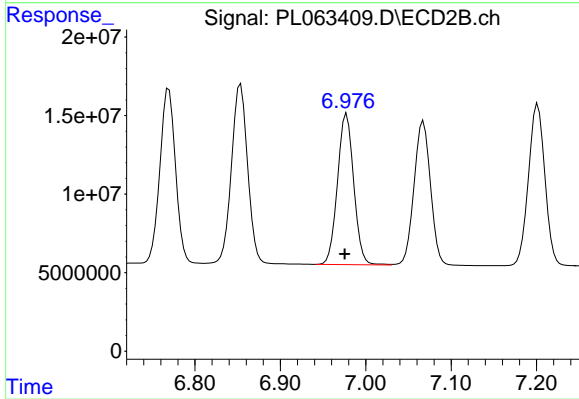
**Instrument :**  
 ECD\_L  
**ClientSampled :**  
 PSTDCCC050



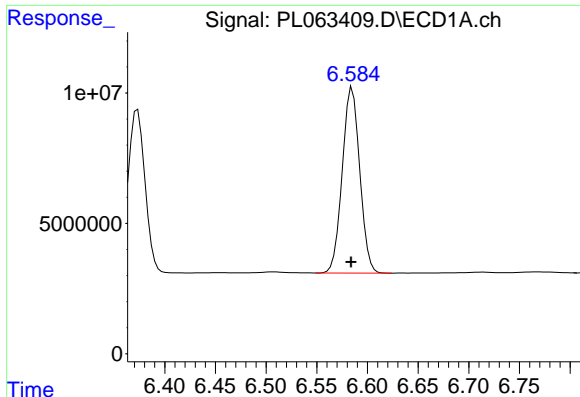
#17 4,4'-DDT  
 R.T.: 7.068 min  
 Delta R.T.: 0.002 min  
 Response: 123109837  
 Conc: 48.21 ng/ml



#18 Endrin aldehyde  
 R.T.: 6.373 min  
 Delta R.T.: 0.001 min  
 Response: 74649044  
 Conc: 50.10 ng/ml



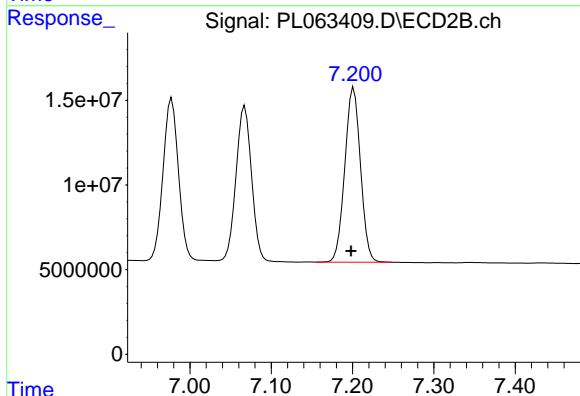
#18 Endrin aldehyde  
 R.T.: 6.978 min  
 Delta R.T.: 0.002 min  
 Response: 126999756  
 Conc: 51.30 ng/ml



#19 Endosulfan Sulfate

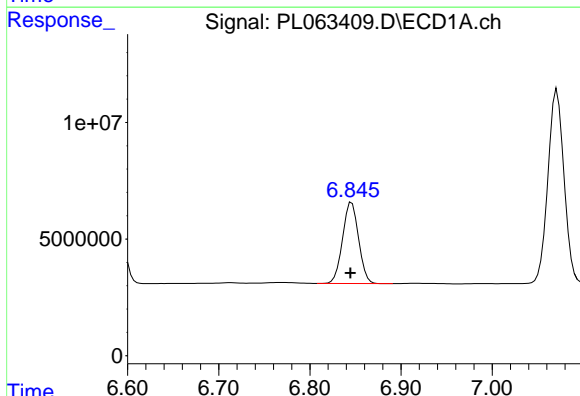
R.T.: 6.585 min  
 Delta R.T.: 0.001 min  
 Response: 85318401  
 Conc: 51.83 ng/ml

Instrument :  
 ECD\_L  
 ClientSampleId :  
 PSTDCCC050



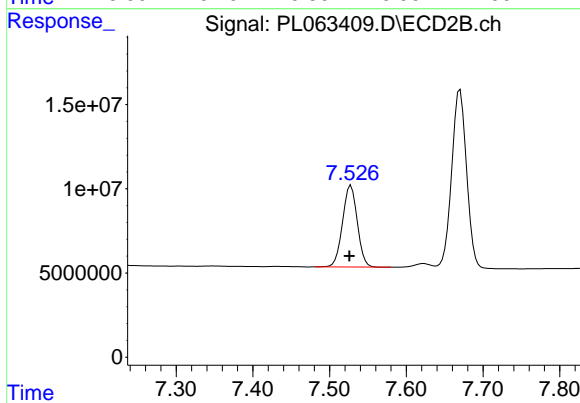
#19 Endosulfan Sulfate

R.T.: 7.202 min  
 Delta R.T.: 0.003 min  
 Response: 137756451  
 Conc: 50.60 ng/ml



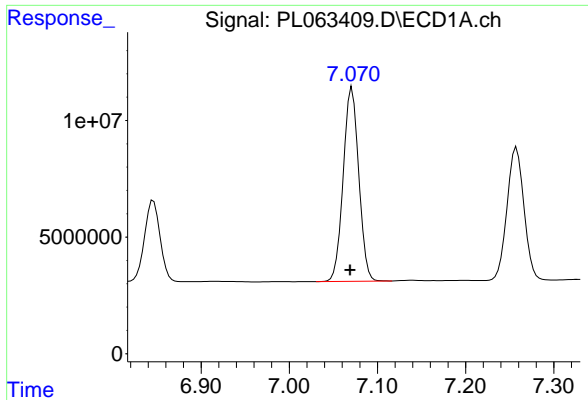
#20 Methoxychlor

R.T.: 6.846 min  
 Delta R.T.: 0.001 min  
 Response: 42516583  
 Conc: 49.62 ng/ml



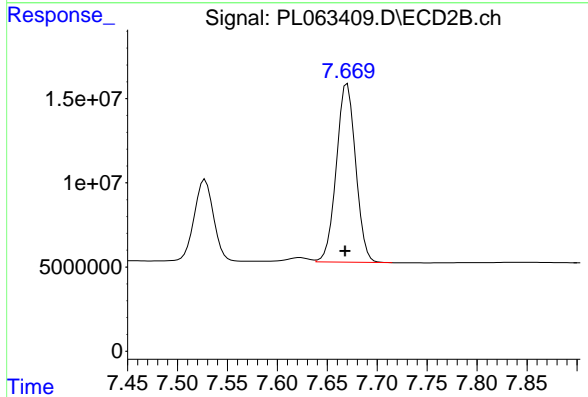
#20 Methoxychlor

R.T.: 7.528 min  
 Delta R.T.: 0.002 min  
 Response: 64934777  
 Conc: 47.36 ng/ml

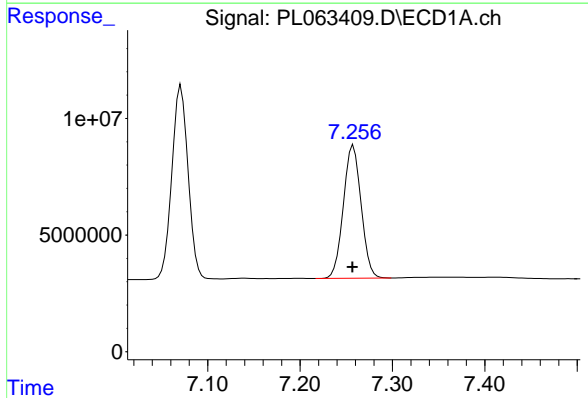


#21 Endrin ketone  
 R.T.: 7.071 min  
 Delta R.T.: 0.002 min  
 Response: 101577450  
 Conc: 54.29 ng/ml

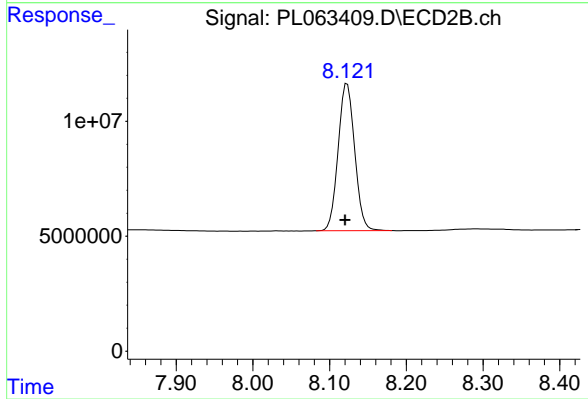
Instrument :  
 ECD\_L  
 ClientSampleId :  
 PSTDCCC050



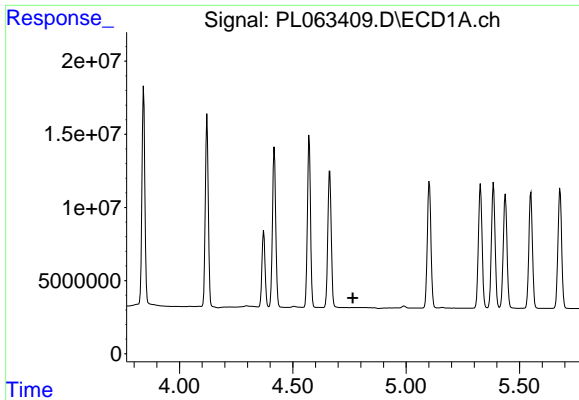
#21 Endrin ketone  
 R.T.: 7.670 min  
 Delta R.T.: 0.002 min  
 Response: 142583291  
 Conc: 51.41 ng/ml



#22 Mirex  
 R.T.: 7.258 min  
 Delta R.T.: 0.001 min  
 Response: 76091482  
 Conc: 51.17 ng/ml



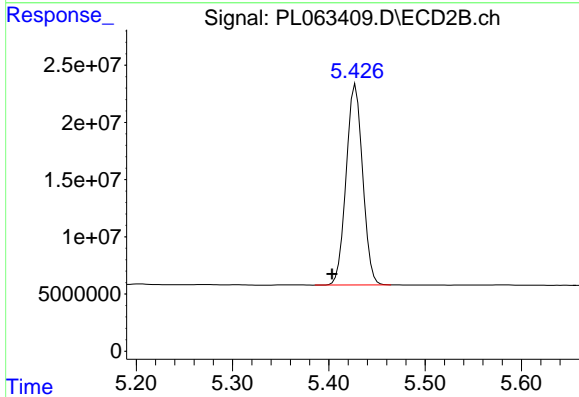
#22 Mirex  
 R.T.: 8.123 min  
 Delta R.T.: 0.003 min  
 Response: 96096963  
 Conc: 49.20 ng/ml



#24 Chlordane-2

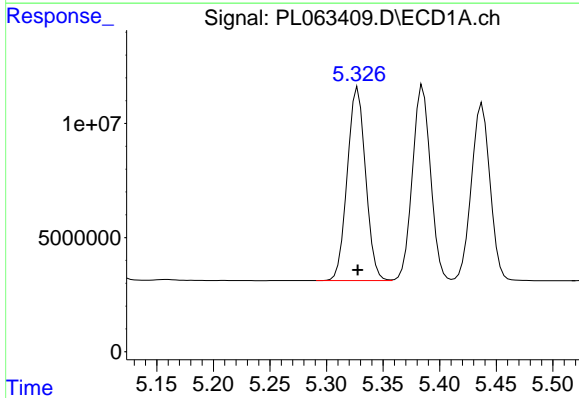
R.T.: 0.000 min  
 Exp R.T.: 4.764 min  
 Response: 0  
 Conc: N.D.

Instrument :  
 ECD\_L  
 ClientSampleId :  
 PSTDCCC050



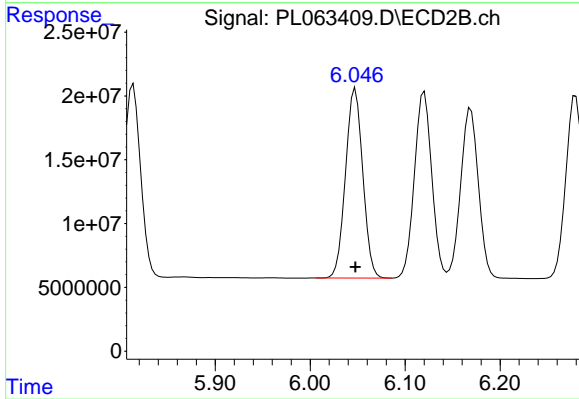
#24 Chlordane-2

R.T.: 5.428 min  
 Delta R.T.: 0.025 min  
 Response: 207867280  
 Conc: 1767.12 ng/ml



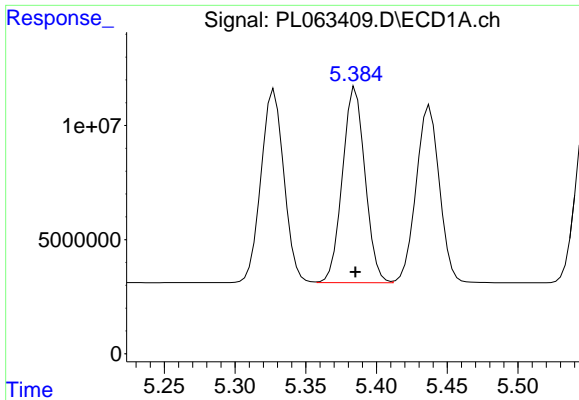
#25 Chlordane-3

R.T.: 5.328 min  
 Delta R.T.: 0.000 min  
 Response: 95349847  
 Conc: 607.33 ng/ml



#25 Chlordane-3

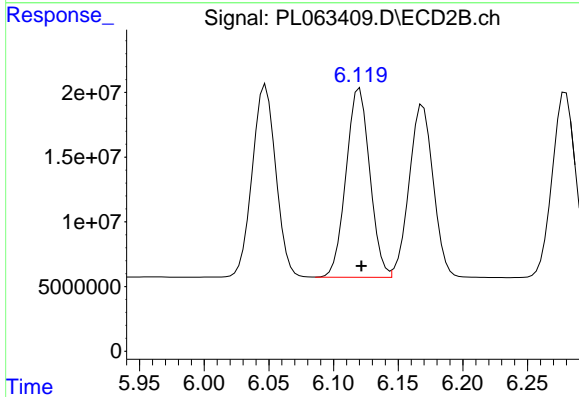
R.T.: 6.048 min  
 Delta R.T.: 0.000 min  
 Response: 188055478  
 Conc: 424.04 ng/ml



#26 Chlordane-4

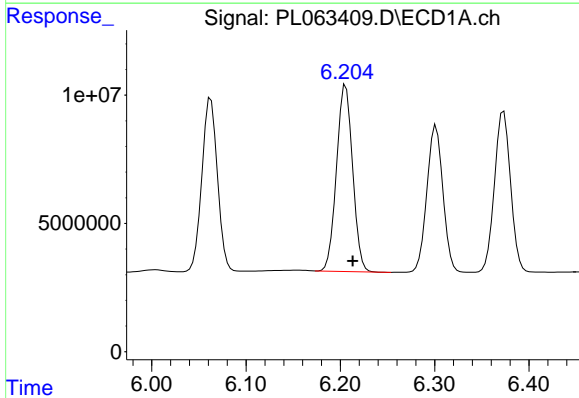
R.T.: 5.385 min  
 Delta R.T.: 0.000 min  
 Response: 95428387  
 Conc: 725.92 ng/ml

Instrument :  
 ECD\_L  
 ClientSampleId :  
 PSTDCCC050



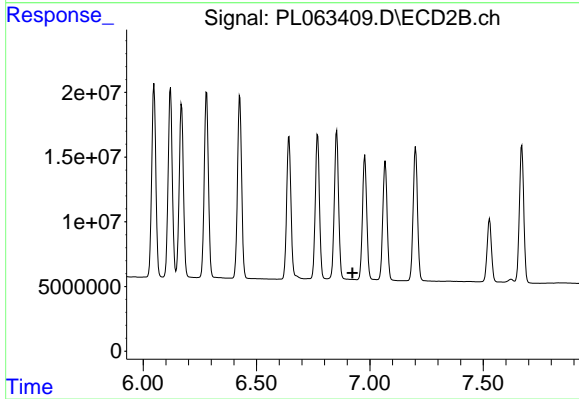
#26 Chlordane-4

R.T.: 6.120 min  
 Delta R.T.: -0.001 min  
 Response: 186528133  
 Conc: 347.78 ng/ml



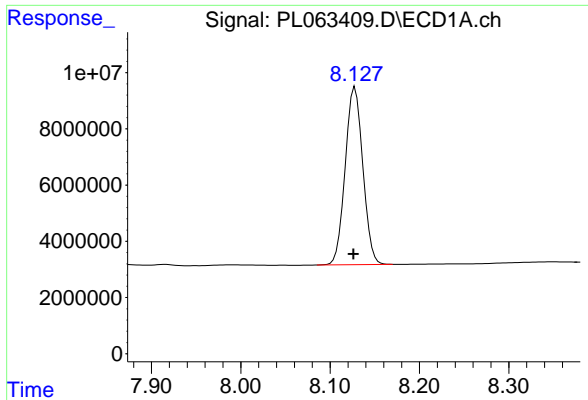
#27 Chlordane-5

R.T.: 6.206 min  
 Delta R.T.: -0.008 min  
 Response: 86256547  
 Conc: 1481.54 ng/ml



#27 Chlordane-5

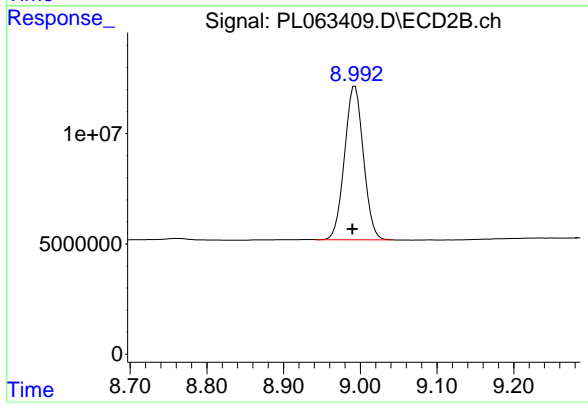
R.T.: 0.000 min  
 Exp R.T. : 6.924 min  
 Response: 0  
 Conc: N.D.



#28 Decachlorobiphenyl

R.T.: 8.128 min  
Delta R.T.: 0.002 min  
Response: 86723367  
Conc: 46.44 ng/ml

Instrument :  
ECD\_L  
ClientSampleId :  
PSTDCCC050



#28 Decachlorobiphenyl

R.T.: 8.993 min  
Delta R.T.: 0.003 min  
Response: 119723557  
Conc: 50.32 ng/ml