

Data Path : Z:\pestpcbsrv\HPCHEM1\ECD_L\Data\PL120922\
 Data File : PL079661.D
 Signal(s) : Signal #1: ECD1A.ch Signal #2: ECD2B.ch
 Acq On : 09 Dec 2022 17:04
 Operator : AR\AJ
 Sample : PB149605BSD
 Misc :
 ALS Vial : 16 Sample Multiplier: 1

Instrument :
 ECD_L
 ClientSampleId :

Integration File signal 1: autoint1.e
 Integration File signal 2: autoint2.e
 Quant Time: Dec 09 23:58:49 2022
 Quant Method : Z:\pestpcbsrv\HPCHEM1\ECD_L\methods\PL112322.M
 Quant Title : GC Extractables
 QLast Update : Thu Nov 24 00:09:49 2022
 Response via : Initial Calibration
 Integrator: ChemStation

Volume Inj. : 1 µl
 Signal #1 Phase : ZB-MR2 Signal #2 Phase: ZB-MR1
 Signal #1 Info : 30M x 0.32mm x0.2 Signal #2 Info : 30M x 0.32mm x0.5µm

	Compound	RT#1	RT#2	Resp#1	Resp#2	ng/ml	ng/ml

System Monitoring Compounds							
1)	SA Tetrachlo...	3.318	2.565	52822915	66069422	23.383	24.272
28)	SA Decachlor...	8.766	7.631	49387766	59787876	25.430	25.449
Target Compounds							
2)	A alpha-BHC	3.778	3.052	180.0E6	226.5E6	52.358	52.519
3)	MA gamma-BHC...	4.111	3.372	167.6E6	204.2E6	51.712	52.431
4)	MA Heptachlor	4.681	3.699	166.8E6	195.3E6	50.613	50.757
5)	MB Aldrin	5.019	3.970	165.9E6	201.4E6	53.413	54.246
6)	B beta-BHC	4.327	3.673	69277464	75392274	49.065	49.758
7)	B delta-BHC	4.567	3.892	155.3E6	204.3E6	55.970	53.112
8)	B Heptachlo...	5.452	4.467	150.8E6	179.4E6	52.836	53.136
9)	A Endosulfan I	5.837	4.829	137.9E6	168.1E6	51.860	52.539
10)	B gamma-Chl...	5.708	4.715	152.7E6	180.3E6	53.364	53.266
11)	B alpha-Chl...	5.785	4.776	150.5E6	176.2E6	52.244	52.596
12)	B 4,4'-DDE	5.969	4.971	134.3E6	168.7E6	53.747	55.013
13)	MA Dieldrin	6.115	5.091	148.3E6	184.7E6	54.066	54.782
14)	MA Endrin	6.345	5.362	120.9E6	156.5E6	49.969	51.732
15)	B Endosulfa...	6.575	5.658	124.8E6	155.1E6	55.294	55.410
16)	A 4,4'-DDD	6.493	5.522	114.5E6	144.9E6	57.717	57.929
17)	MA 4,4'-DDT	6.802	5.768	106.8E6	129.5E6	47.085	49.551
18)	B Endrin al...	6.707	5.837	105.1E6	123.8E6	58.027	58.159
19)	B Endosulfa...	6.940	6.059	124.6E6	150.4E6	53.742	53.309
20)	A Methoxychlor	7.288	6.345	57854941	66774003	47.957	49.129
21)	B Endrin ke...	7.426	6.555	136.7E6	174.6E6	55.411	56.704
22)	Mirex	7.881	6.727	102.7E6	125.4E6	54.205	53.031
24)	Chlordane-2	5.019f	0.000	165.9E6	0	1574.107	N.D. #
25)	Chlordane-3	5.708	4.715	152.7E6	180.3E6	367.711	539.221 #
26)	Chlordane-4	5.785	4.776	150.5E6	176.2E6	295.888	486.120 #

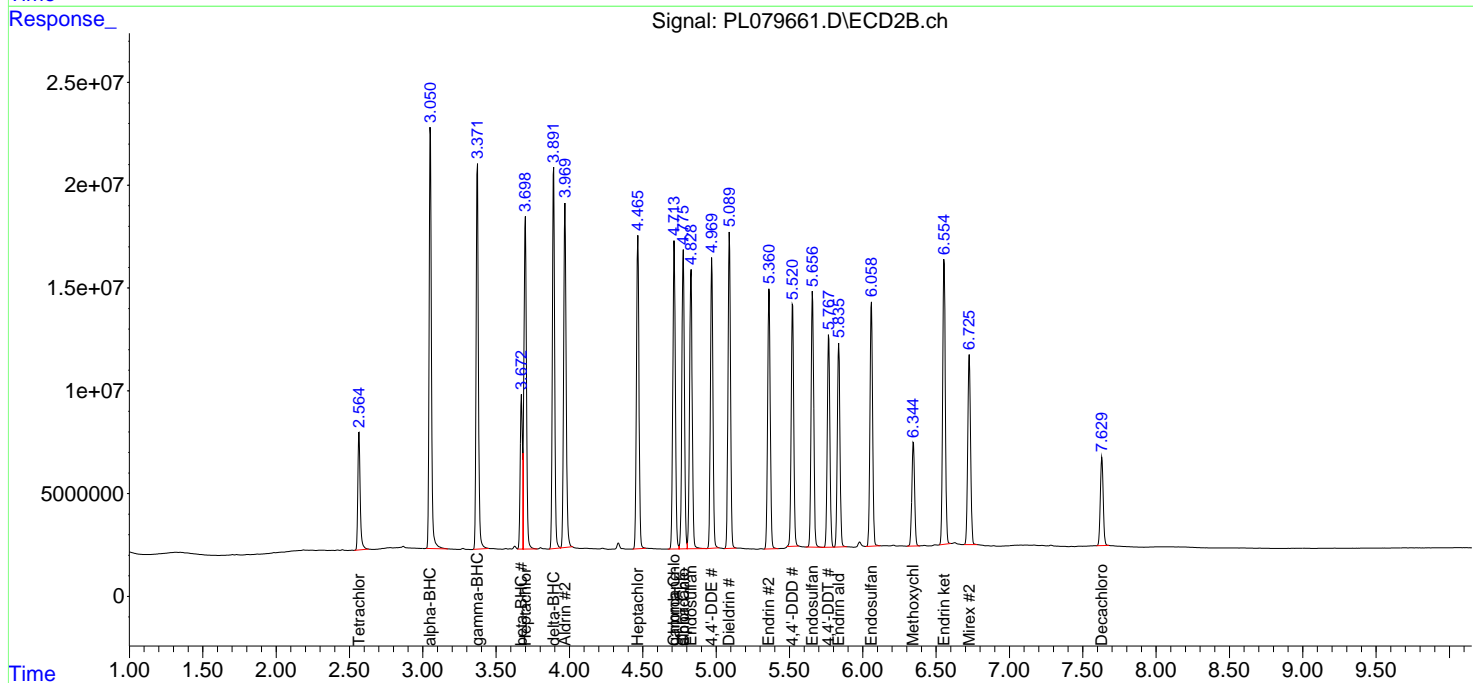
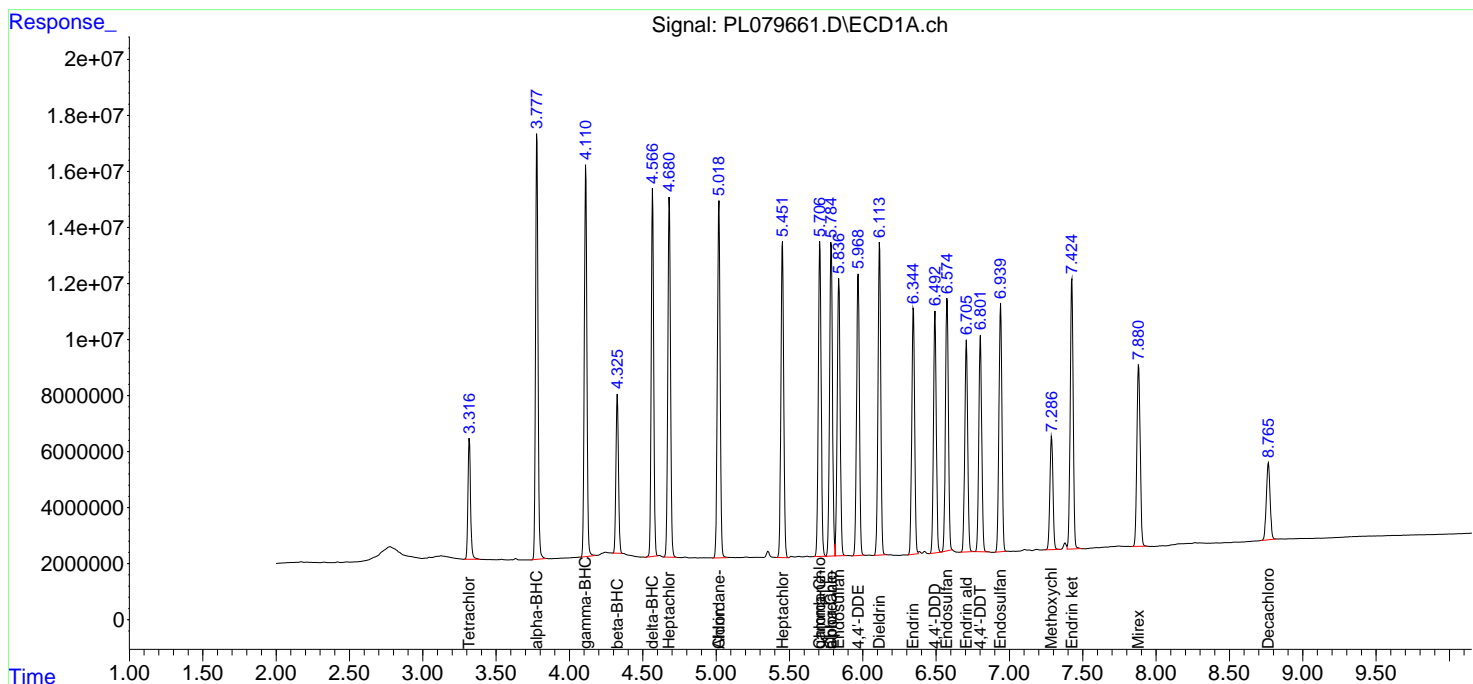
(f)=RT Delta > 1/2 Window (#)=Amounts differ by > 25% (m)=manual int.

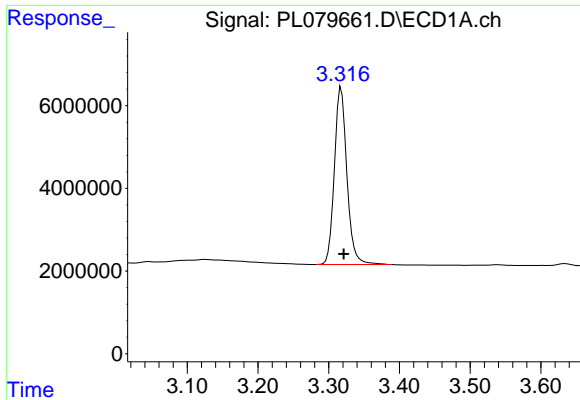
Data Path : Z:\pestpcbsrv\HPCHEM1\ECD_L\Data\PL120922\
 Data File : PL079661.D
 Signal(s) : Signal #1: ECD1A.ch Signal #2: ECD2B.ch
 Acq On : 09 Dec 2022 17:04
 Operator : AR\AJ
 Sample : PB149605BSD
 Misc :
 ALS Vial : 16 Sample Multiplier: 1

Instrument :
 ECD_L
 ClientSampleId :

Integration File signal 1: autoint1.e
 Integration File signal 2: autoint2.e
 Quant Time: Dec 09 23:58:49 2022
 Quant Method : Z:\pestpcbsrv\HPCHEM1\ECD_L\methods\PL112322.M
 Quant Title : GC Extractables
 QLast Update : Thu Nov 24 00:09:49 2022
 Response via : Initial Calibration
 Integrator: ChemStation

Volume Inj. : 1 µl
 Signal #1 Phase : ZB-MR2 Signal #2 Phase: ZB-MR1
 Signal #1 Info : 30M x 0.32mm x0.2 Signal #2 Info : 30M x 0.32mm x0.5µm

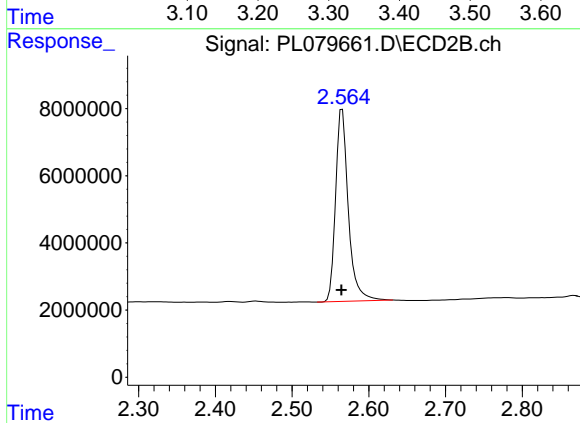




#1 Tetrachloro-m-xylene

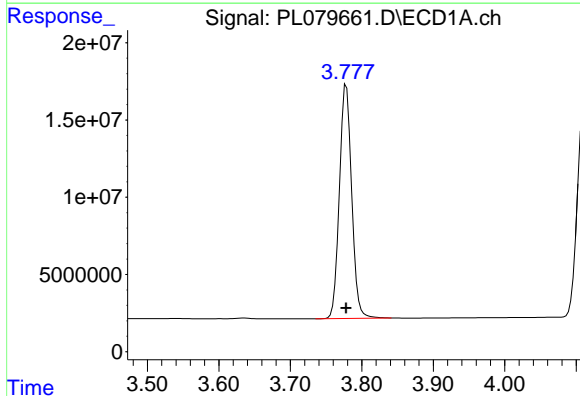
R.T.: 3.318 min
 Delta R.T.: -0.003 min
 Response: 52822915
 Conc: 23.38 ng/ml

Instrument :
 ECD_L
 ClientSampleId :



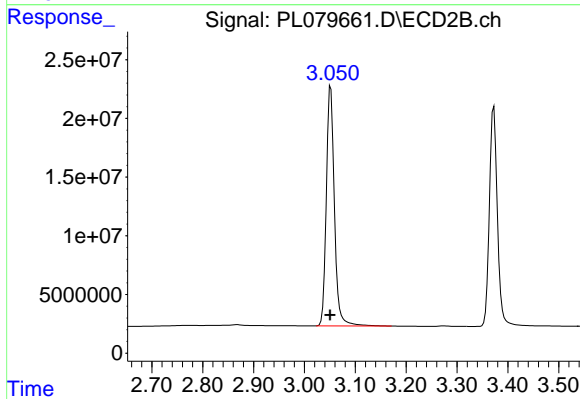
#1 Tetrachloro-m-xylene

R.T.: 2.565 min
 Delta R.T.: 0.000 min
 Response: 66069422
 Conc: 24.27 ng/ml



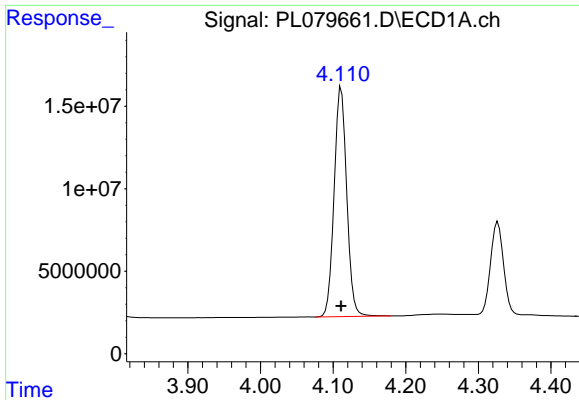
#2 alpha-BHC

R.T.: 3.778 min
 Delta R.T.: 0.000 min
 Response: 180047613
 Conc: 52.36 ng/ml



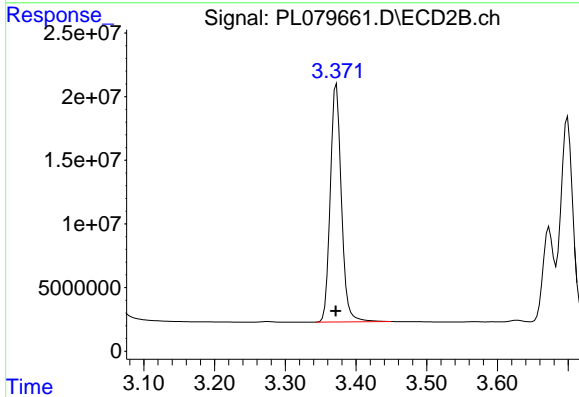
#2 alpha-BHC

R.T.: 3.052 min
 Delta R.T.: 0.001 min
 Response: 226461849
 Conc: 52.52 ng/ml

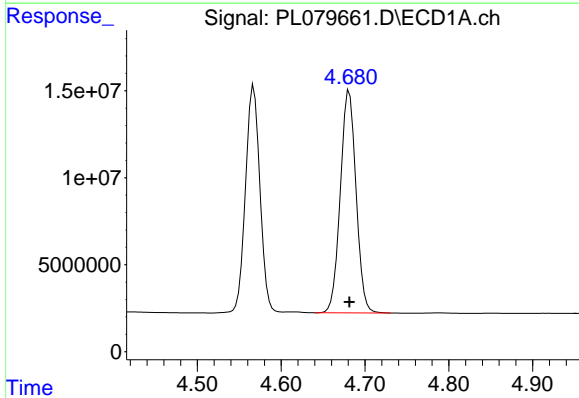


#3 gamma-BHC (Lindane)
 R.T.: 4.111 min
 Delta R.T.: 0.000 min
 Response: 167587345
 Conc: 51.71 ng/ml

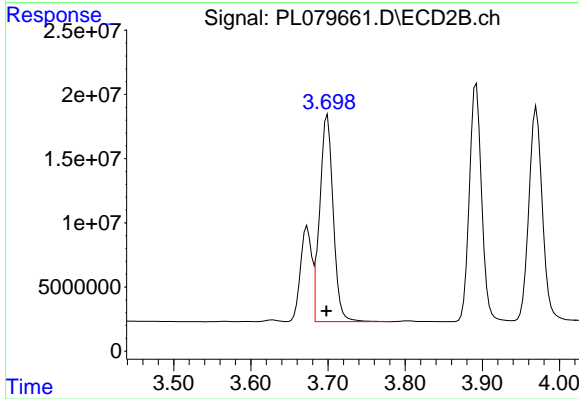
Instrument :
 ECD_L
 ClientSampleId :



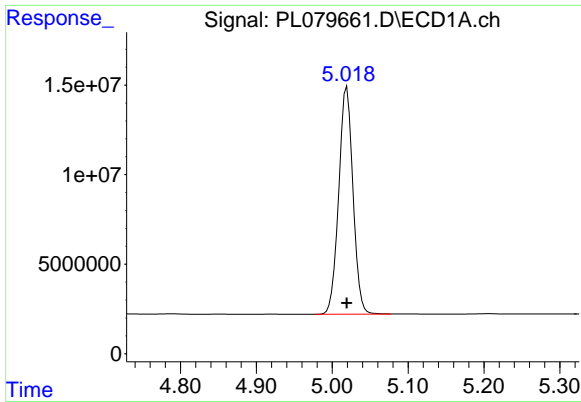
#3 gamma-BHC (Lindane)
 R.T.: 3.372 min
 Delta R.T.: 0.001 min
 Response: 204150112
 Conc: 52.43 ng/ml



#4 Heptachlor
 R.T.: 4.681 min
 Delta R.T.: 0.000 min
 Response: 166782605
 Conc: 50.61 ng/ml



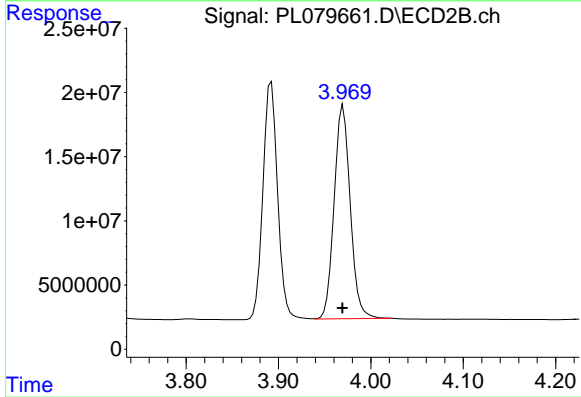
#4 Heptachlor
 R.T.: 3.699 min
 Delta R.T.: 0.001 min
 Response: 195301929
 Conc: 50.76 ng/ml



#5 Aldrin

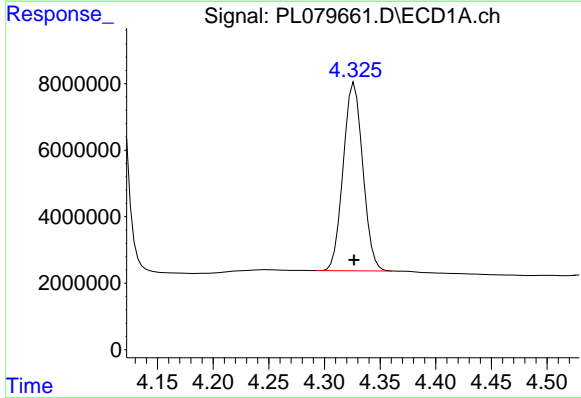
R.T.: 5.019 min
 Delta R.T.: 0.000 min
 Response: 165868141
 Conc: 53.41 ng/ml

Instrument :
 ECD_L
 ClientSampleId :



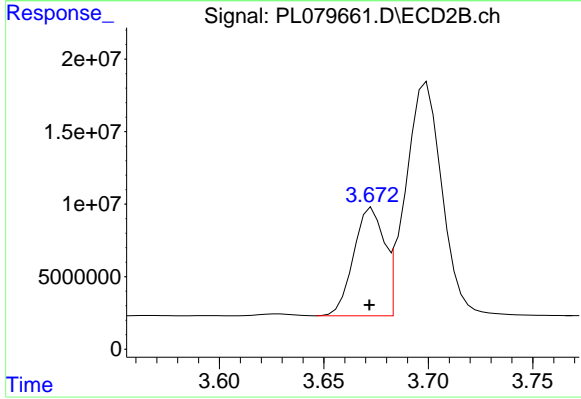
#5 Aldrin

R.T.: 3.970 min
 Delta R.T.: 0.000 min
 Response: 201409074
 Conc: 54.25 ng/ml



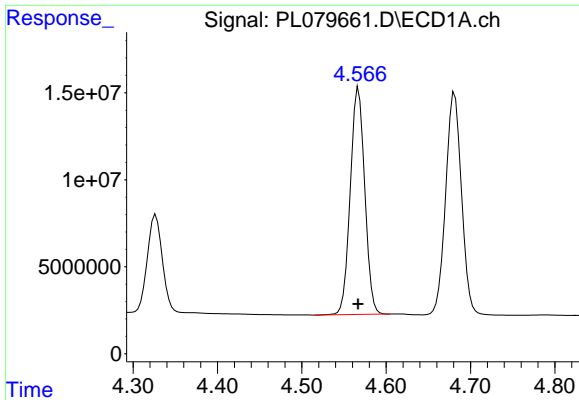
#6 beta-BHC

R.T.: 4.327 min
 Delta R.T.: 0.000 min
 Response: 69277464
 Conc: 49.06 ng/ml



#6 beta-BHC

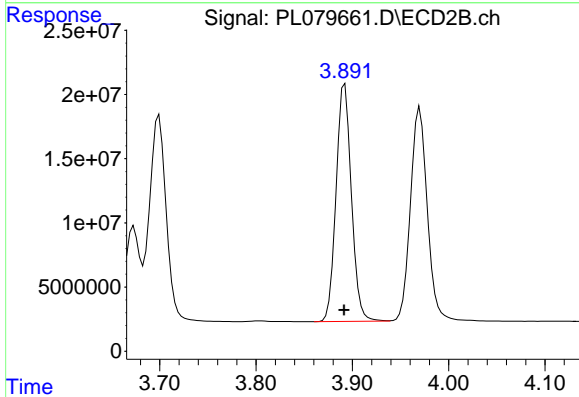
R.T.: 3.673 min
 Delta R.T.: 0.001 min
 Response: 75392274
 Conc: 49.76 ng/ml



#7 delta-BHC

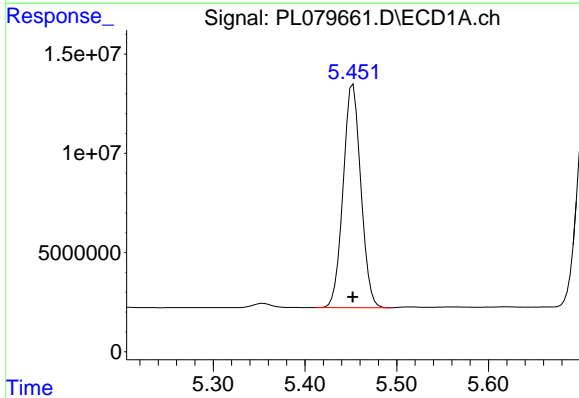
R.T.: 4.567 min
 Delta R.T.: 0.000 min
 Response: 155281848
 Conc: 55.97 ng/ml

Instrument :
 ECD_L
 ClientSampleId :



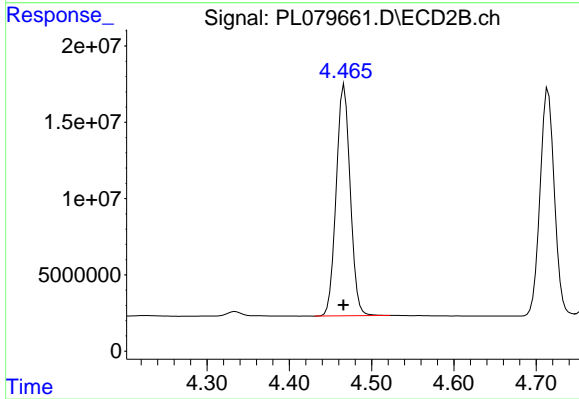
#7 delta-BHC

R.T.: 3.892 min
 Delta R.T.: 0.001 min
 Response: 204331387
 Conc: 53.11 ng/ml



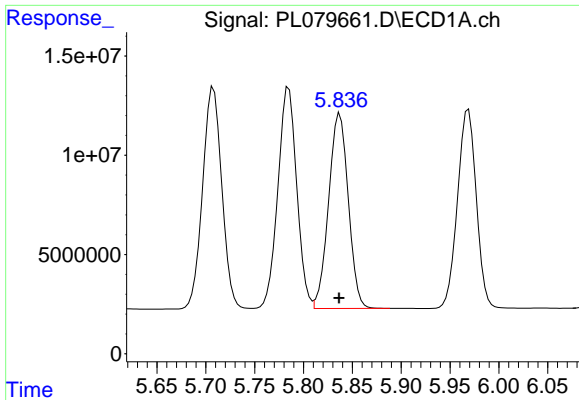
#8 Heptachlor epoxide

R.T.: 5.452 min
 Delta R.T.: 0.000 min
 Response: 150845643
 Conc: 52.84 ng/ml



#8 Heptachlor epoxide

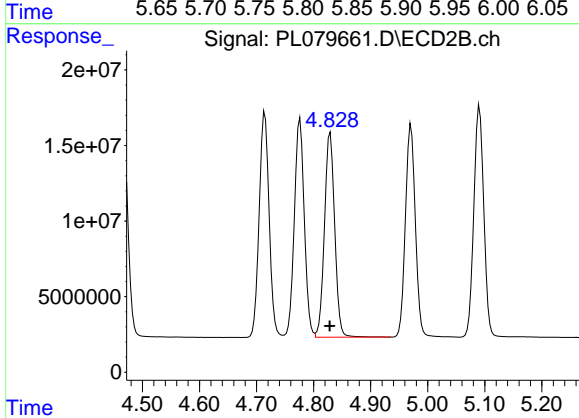
R.T.: 4.467 min
 Delta R.T.: 0.001 min
 Response: 179352742
 Conc: 53.14 ng/ml



#9 Endosulfan I

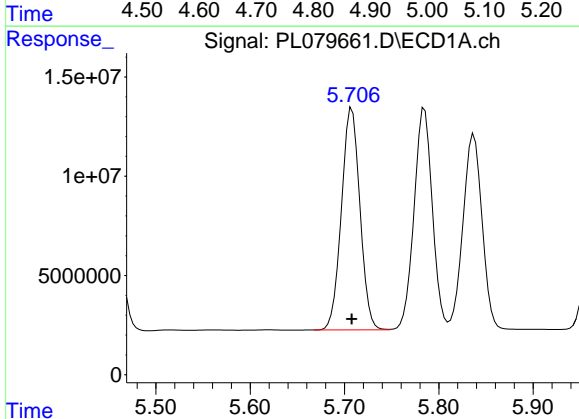
R.T.: 5.837 min
 Delta R.T.: 0.000 min
 Response: 137880553
 Conc: 51.86 ng/ml

Instrument :
 ECD_L
 ClientSampleId :



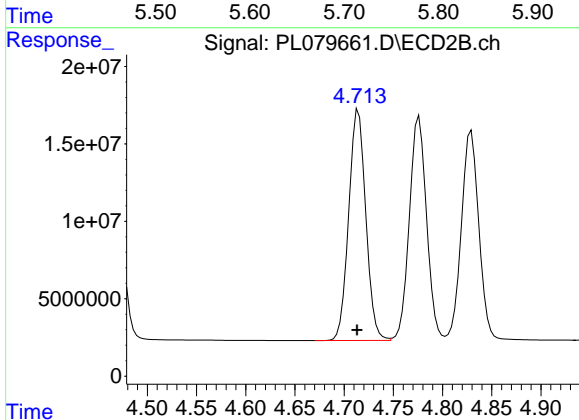
#9 Endosulfan I

R.T.: 4.829 min
 Delta R.T.: 0.001 min
 Response: 168114701
 Conc: 52.54 ng/ml



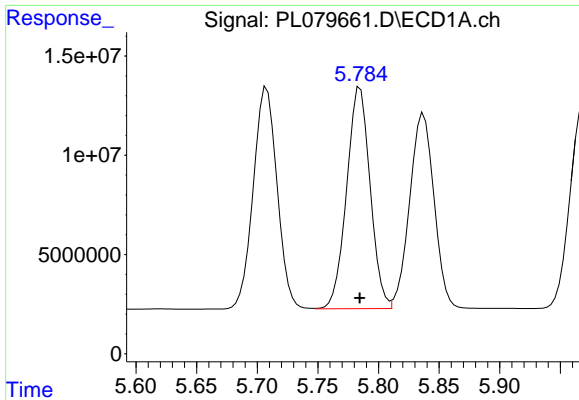
#10 gamma-Chlordane

R.T.: 5.708 min
 Delta R.T.: 0.000 min
 Response: 152684150
 Conc: 53.36 ng/ml



#10 gamma-Chlordane

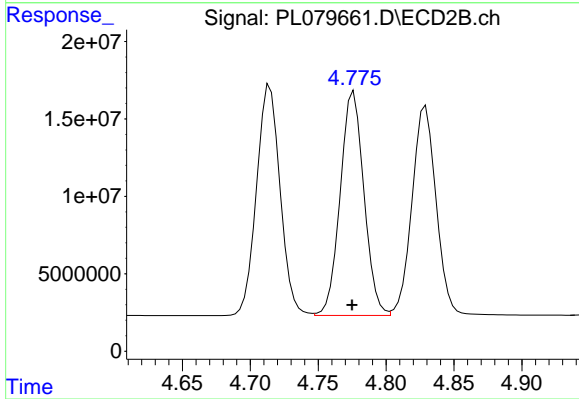
R.T.: 4.715 min
 Delta R.T.: 0.001 min
 Response: 180263695
 Conc: 53.27 ng/ml



#11 alpha-Chlordane

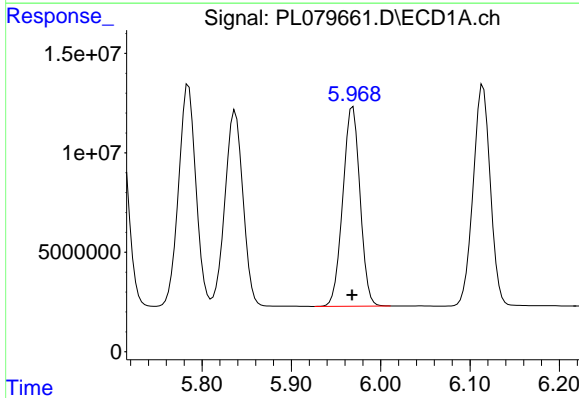
R.T.: 5.785 min
Delta R.T.: 0.000 min
Response: 150545508
Conc: 52.24 ng/ml

Instrument :
ECD_L
ClientSampleId :



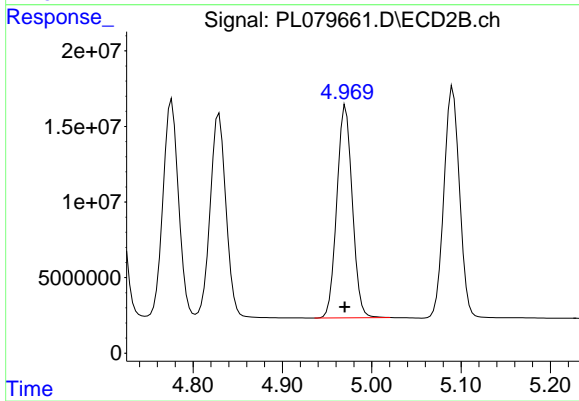
#11 alpha-Chlordane

R.T.: 4.776 min
Delta R.T.: 0.001 min
Response: 176152051
Conc: 52.60 ng/ml



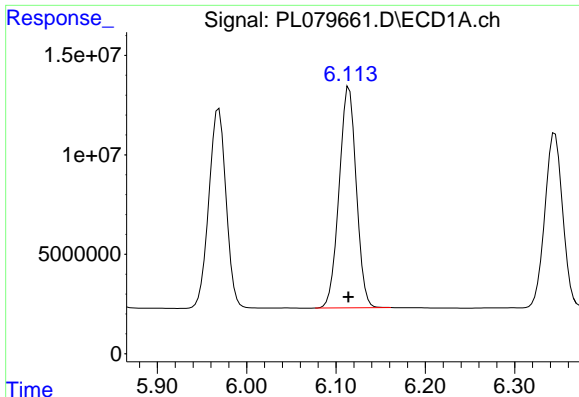
#12 4,4'-DDE

R.T.: 5.969 min
Delta R.T.: 0.001 min
Response: 134280781
Conc: 53.75 ng/ml



#12 4,4'-DDE

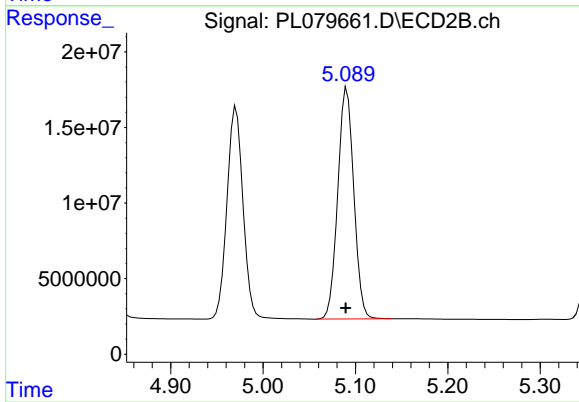
R.T.: 4.971 min
Delta R.T.: 0.000 min
Response: 168675082
Conc: 55.01 ng/ml



#13 Dieldrin

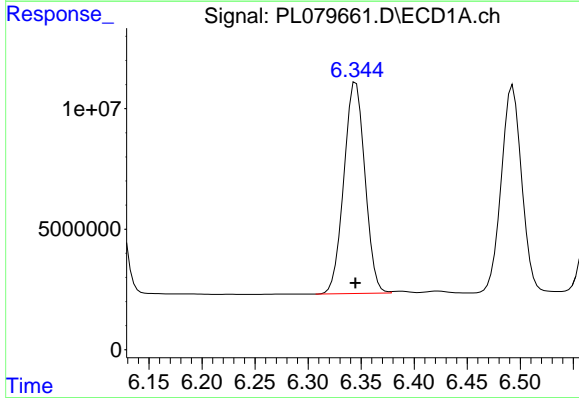
R.T.: 6.115 min
 Delta R.T.: 0.000 min
 Response: 148294194
 Conc: 54.07 ng/ml

Instrument :
 ECD_L
 ClientSampleId :



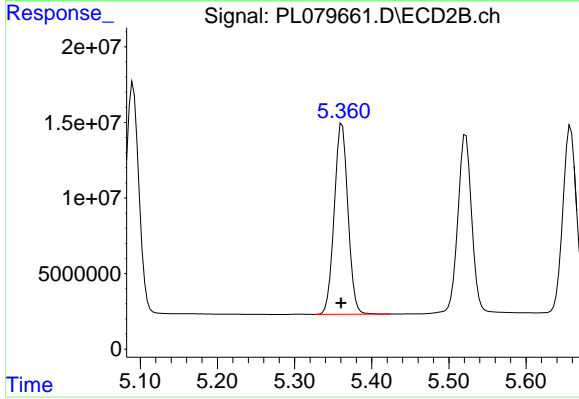
#13 Dieldrin

R.T.: 5.091 min
 Delta R.T.: 0.001 min
 Response: 184679654
 Conc: 54.78 ng/ml



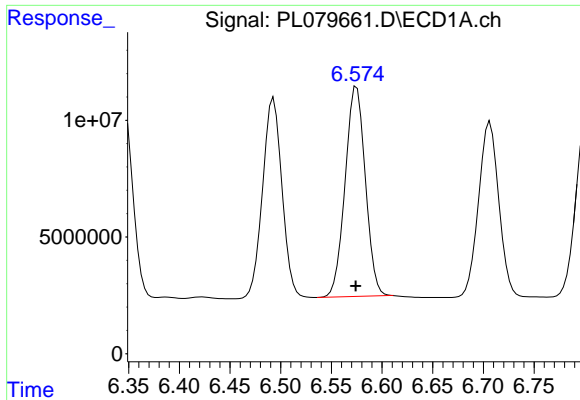
#14 Endrin

R.T.: 6.345 min
 Delta R.T.: 0.000 min
 Response: 120884095
 Conc: 49.97 ng/ml



#14 Endrin

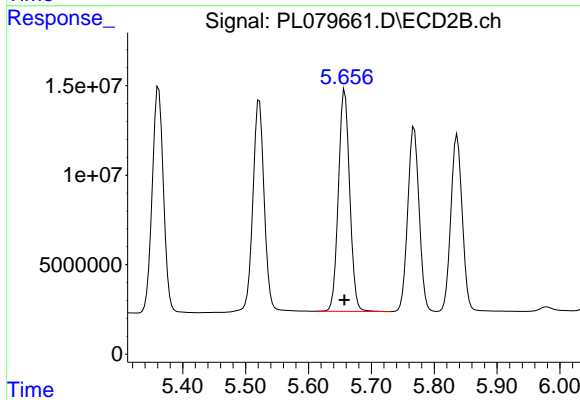
R.T.: 5.362 min
 Delta R.T.: 0.001 min
 Response: 156476073
 Conc: 51.73 ng/ml



#15 Endosulfan II

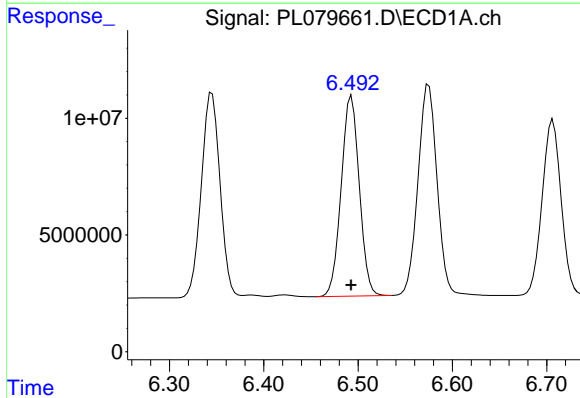
R.T.: 6.575 min
 Delta R.T.: 0.000 min
 Response: 124823875
 Conc: 55.29 ng/ml

Instrument :
 ECD_L
 ClientSampleId :



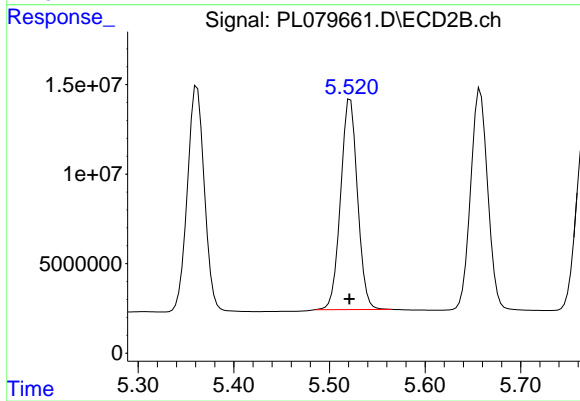
#15 Endosulfan II

R.T.: 5.658 min
 Delta R.T.: 0.000 min
 Response: 155050127
 Conc: 55.41 ng/ml



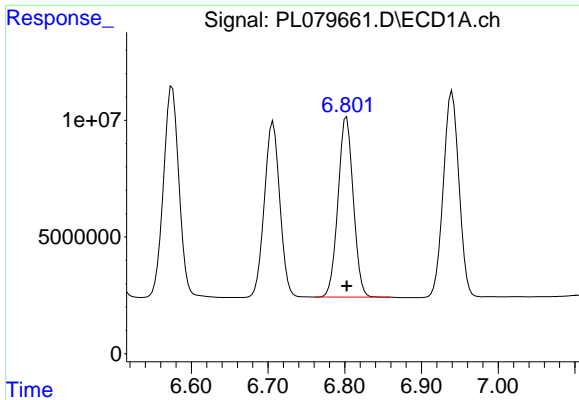
#16 4,4'-DDD

R.T.: 6.493 min
 Delta R.T.: 0.000 min
 Response: 114511807
 Conc: 57.72 ng/ml



#16 4,4'-DDD

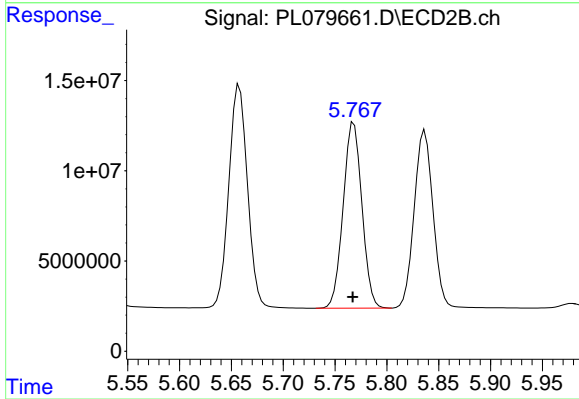
R.T.: 5.522 min
 Delta R.T.: 0.000 min
 Response: 144908072
 Conc: 57.93 ng/ml



#17 4,4'-DDT

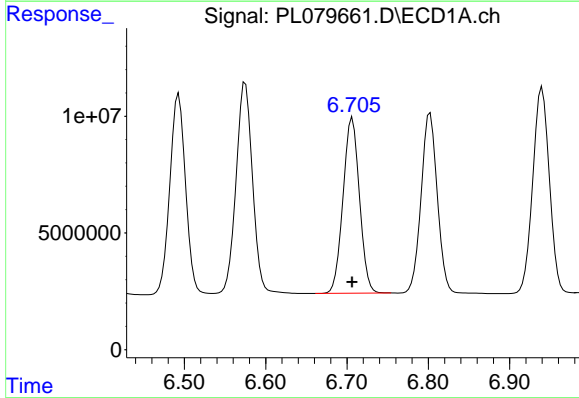
R.T.: 6.802 min
 Delta R.T.: 0.000 min
 Response: 106806752
 Conc: 47.09 ng/ml

Instrument :
 ECD_L
 ClientSampleId :



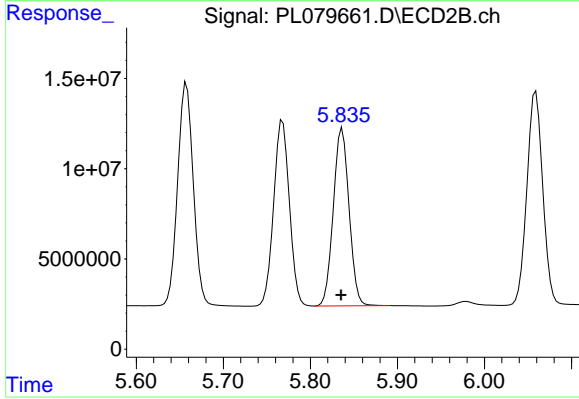
#17 4,4'-DDT

R.T.: 5.768 min
 Delta R.T.: 0.000 min
 Response: 129506350
 Conc: 49.55 ng/ml



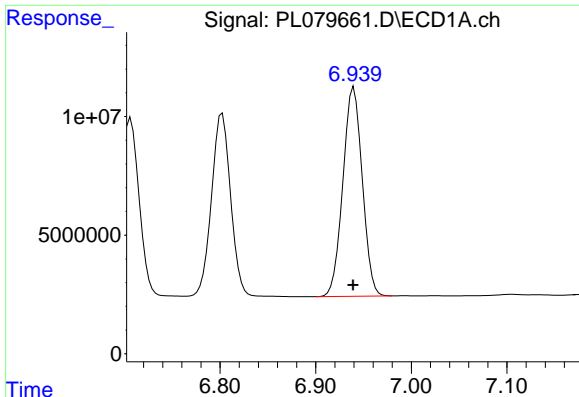
#18 Endrin aldehyde

R.T.: 6.707 min
 Delta R.T.: 0.000 min
 Response: 105095914
 Conc: 58.03 ng/ml



#18 Endrin aldehyde

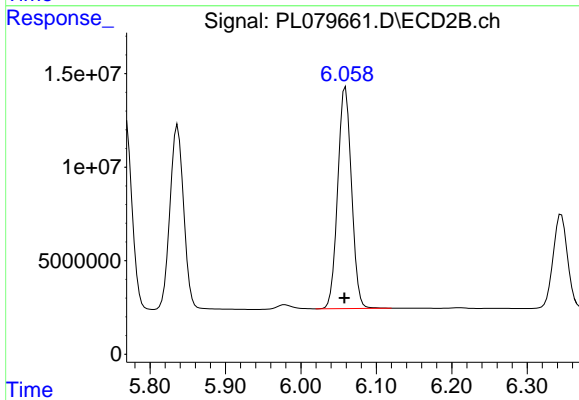
R.T.: 5.837 min
 Delta R.T.: 0.001 min
 Response: 123787128
 Conc: 58.16 ng/ml



#19 Endosulfan Sulfate

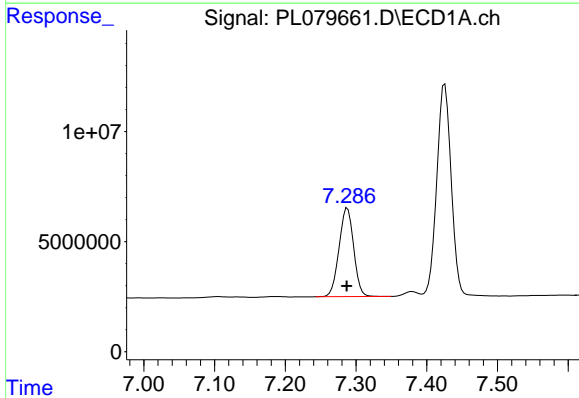
R.T.: 6.940 min
 Delta R.T.: 0.000 min
 Response: 124624111
 Conc: 53.74 ng/ml

Instrument :
 ECD_L
 ClientSampleId :



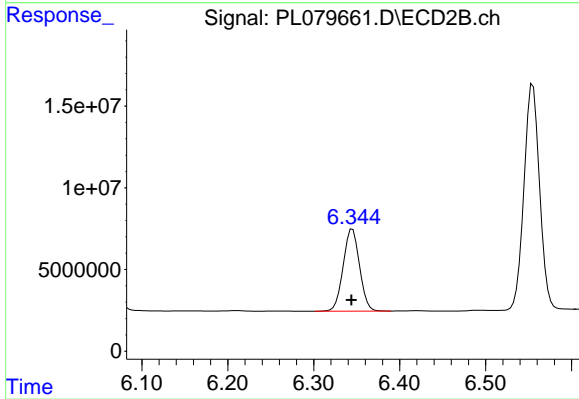
#19 Endosulfan Sulfate

R.T.: 6.059 min
 Delta R.T.: 0.001 min
 Response: 150422717
 Conc: 53.31 ng/ml



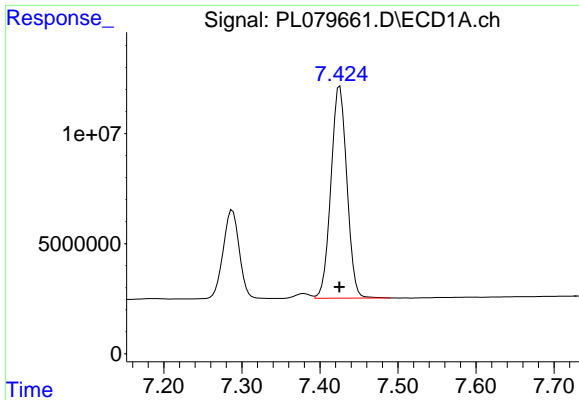
#20 Methoxychlor

R.T.: 7.288 min
 Delta R.T.: 0.001 min
 Response: 57854941
 Conc: 47.96 ng/ml



#20 Methoxychlor

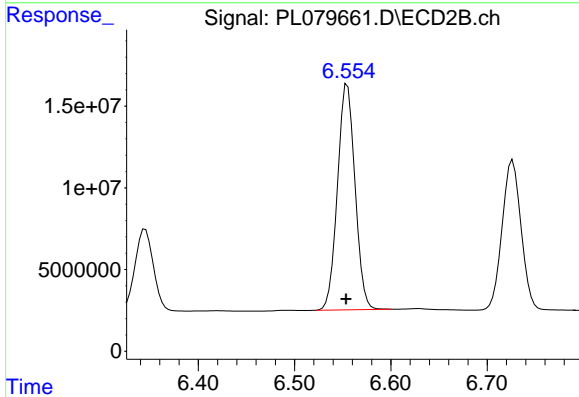
R.T.: 6.345 min
 Delta R.T.: 0.001 min
 Response: 66774003
 Conc: 49.13 ng/ml



#21 Endrin ketone

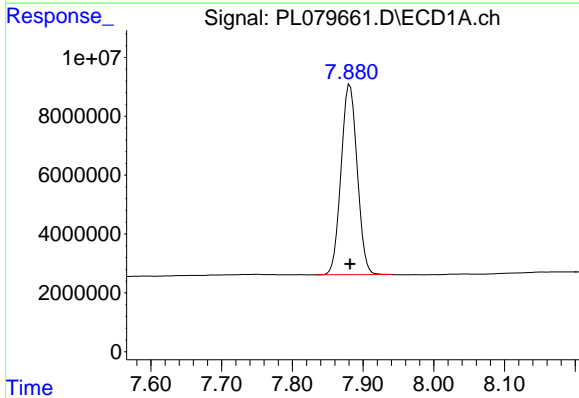
R.T.: 7.426 min
 Delta R.T.: 0.000 min
 Response: 136712298
 Conc: 55.41 ng/ml

Instrument :
 ECD_L
 ClientSampleId :



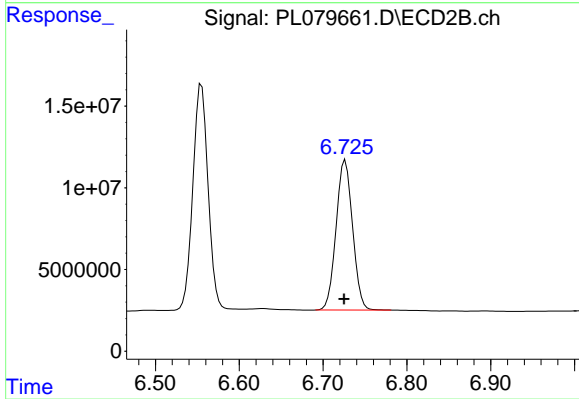
#21 Endrin ketone

R.T.: 6.555 min
 Delta R.T.: 0.001 min
 Response: 174644090
 Conc: 56.70 ng/ml



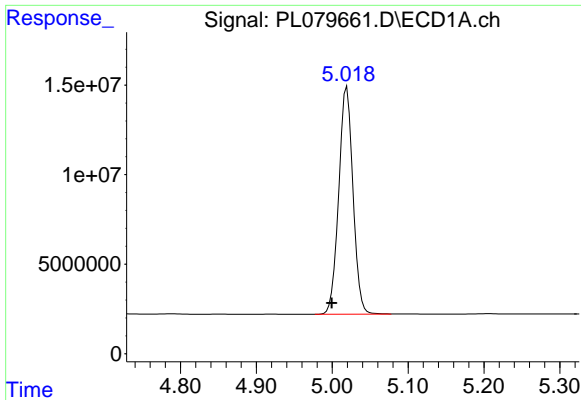
#22 Mirex

R.T.: 7.881 min
 Delta R.T.: 0.000 min
 Response: 102669900
 Conc: 54.20 ng/ml



#22 Mirex

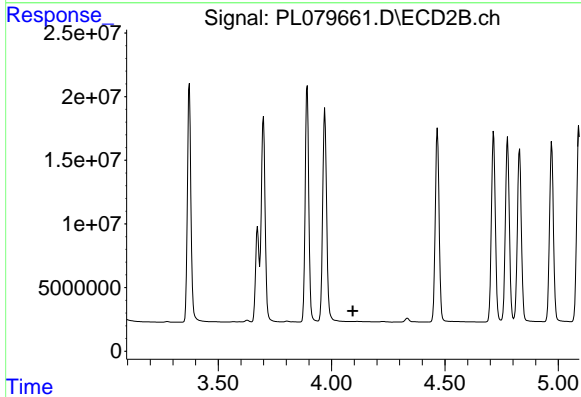
R.T.: 6.727 min
 Delta R.T.: 0.001 min
 Response: 125419113
 Conc: 53.03 ng/ml



#24 Chlordane-2

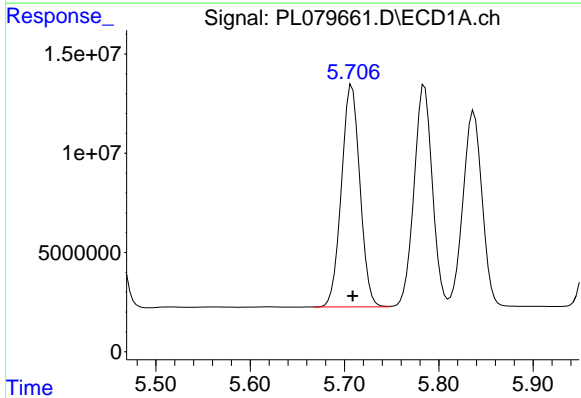
R.T.: 5.019 min
 Delta R.T.: 0.020 min
 Response: 165868141
 Conc: 1574.11 ng/m

Instrument :
 ECD_L
 ClientSampleId :



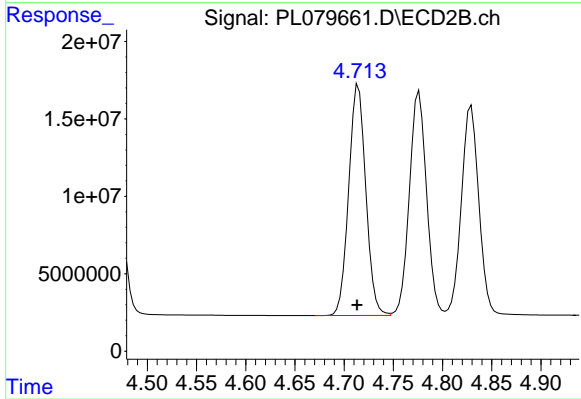
#24 Chlordane-2

R.T.: 0.000 min
 Exp R.T. : 4.094 min
 Response: 0
 Conc: N.D.



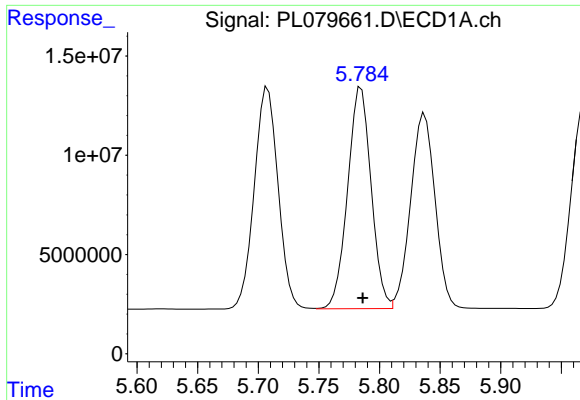
#25 Chlordane-3

R.T.: 5.708 min
 Delta R.T.: 0.000 min
 Response: 152684150
 Conc: 367.71 ng/ml



#25 Chlordane-3

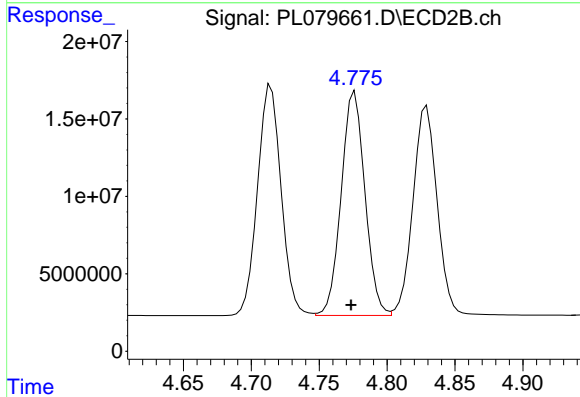
R.T.: 4.715 min
 Delta R.T.: 0.001 min
 Response: 180263695
 Conc: 539.22 ng/ml



#26 Chlordane-4

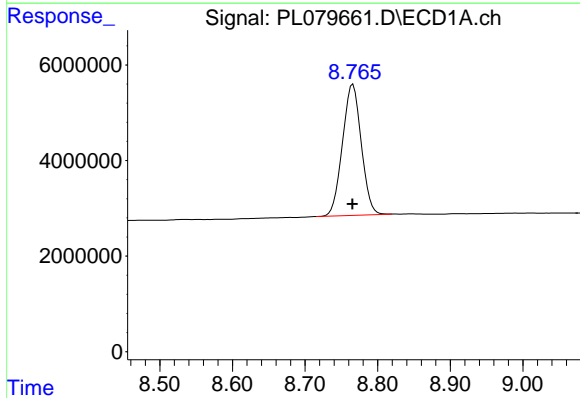
R.T.: 5.785 min
 Delta R.T.: -0.001 min
 Response: 150545508
 Conc: 295.89 ng/ml

Instrument :
 ECD_L
 ClientSampleId :



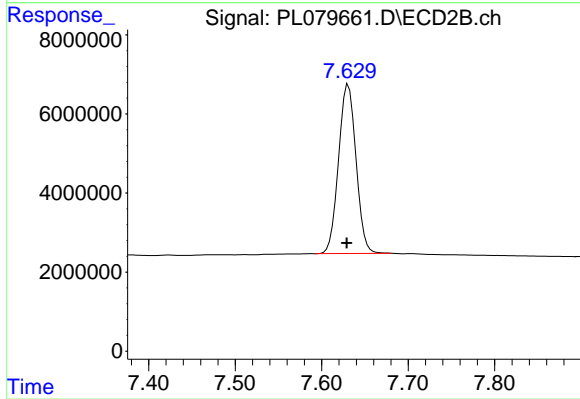
#26 Chlordane-4

R.T.: 4.776 min
 Delta R.T.: 0.003 min
 Response: 176152051
 Conc: 486.12 ng/ml



#28 Decachlorobiphenyl

R.T.: 8.766 min
 Delta R.T.: 0.001 min
 Response: 49387766
 Conc: 25.43 ng/ml



#28 Decachlorobiphenyl

R.T.: 7.631 min
 Delta R.T.: 0.002 min
 Response: 59787876
 Conc: 25.45 ng/ml