

Data Path : Z:\pestpcbsrv\HPCHEM1\ECD_L\Data\PL121018\
 Data File : PL042898.D
 Signal(s) : Signal #1: ECD1A.ch Signal #2: ECD2B.ch
 Acq On : 10 Dec 2018 10:27
 Operator : AJ\SJ
 Sample : J6199-01
 Misc :
 ALS Vial : 5 Sample Multiplier: 1

Instrument :
 ECD_L
ClientSampleId :
 SU-01-120518-A

Manual Integrations
APPROVED
 Sohil
 12/11/2018 10:18:12 AM

Integration File signal 1: autoint1.e
 Integration File signal 2: autoint2.e
 Quant Time: Dec 10 11:07:29 2018
 Quant Method : Z:\pestpcbsrv\HPCHEM1\ECD_L\methods\PL120618.M
 Quant Title : GC Extractables
 QLast Update : Fri Dec 07 00:20:08 2018
 Response via : Initial Calibration
 Integrator: ChemStation

Volume Inj. : 2 µl
 Signal #1 Phase : ZB-MR1 Signal #2 Phase: ZB-MR2
 Signal #1 Info : 30M x 0.32mm x0.5 Signal #2 Info : 30M x 0.32mm x0.25µm

Compound	RT#1	RT#2	Resp#1	Resp#2	ng/ml	ng/ml

System Monitoring Compounds						
1) SA Tetrachlo...	3.472	4.099	74938357	36490727	12.219	12.312
28) SA Decachlor...	8.210	9.232	63703887	27819511	9.756	10.665
Target Compounds						
10) B gamma-Chl...	5.405	6.232	2661435	4378190	0.330m	1.192m#
11) B alpha-Chl...	5.464	6.305	3087523	2335078	0.389	0.649m#
12) B 4,4'-DDE	5.628	6.459	3960050	5002706	0.572m	1.381m#
17) MA 4,4'-DDT	6.382	7.252	4080198	2236649	0.686m	0.762

(f)=RT Delta > 1/2 Window (#)=Amounts differ by > 25% (m)=manual int.

Data Path : Z:\pestpcbsrv\HPCHEM1\ECD_L\Data\PL121018\
 Data File : PL042898.D
 Signal(s) : Signal #1: ECD1A.ch Signal #2: ECD2B.ch
 Acq On : 10 Dec 2018 10:27
 Operator : AJ\SJ
 Sample : J6199-01
 Misc :
 ALS Vial : 5 Sample Multiplier: 1

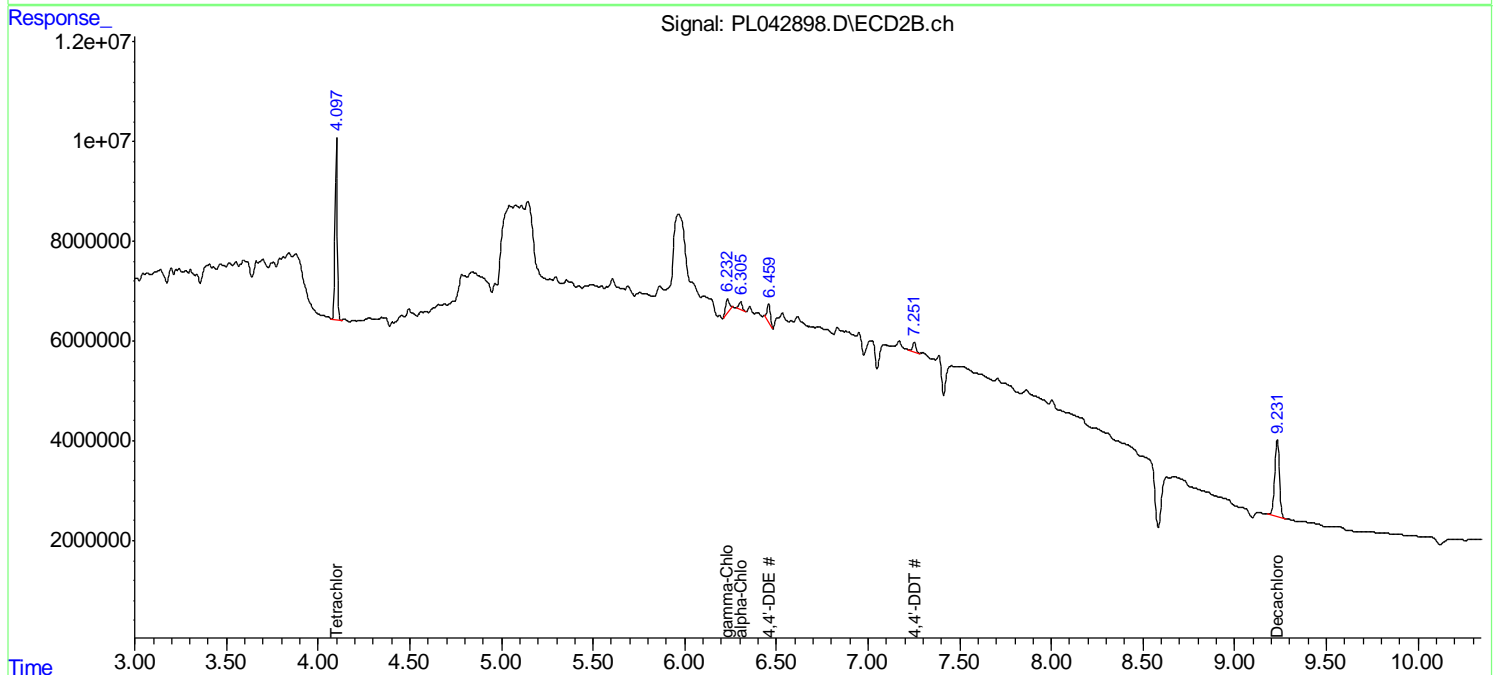
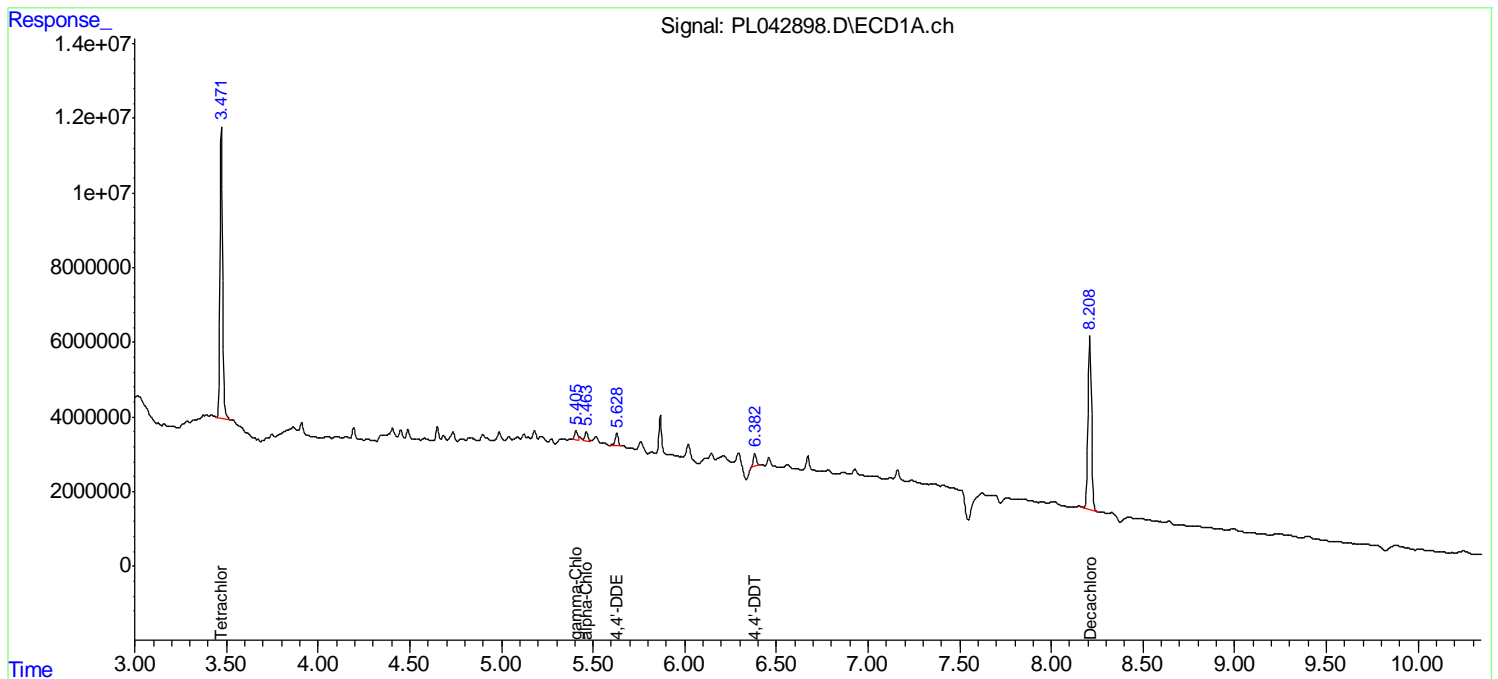
Instrument :
 ECD_L
 Client Sampled :
 SU-01-120518-A

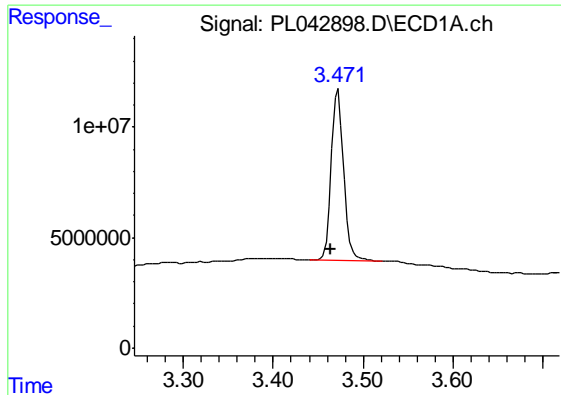
Manual Integrations
 APPROVED

Sohil
 12/11/2018 10:18:12 AM

Integration File signal 1: autoint1.e
 Integration File signal 2: autoint2.e
 Quant Time: Dec 10 11:07:29 2018
 Quant Method : Z:\pestpcbsrv\HPCHEM1\ECD_L\methods\PL120618.M
 Quant Title : GC Extractables
 QLast Update : Fri Dec 07 00:20:08 2018
 Response via : Initial Calibration
 Integrator: ChemStation

Volume Inj. : 2 µl
 Signal #1 Phase : ZB-MR1 Signal #2 Phase: ZB-MR2
 Signal #1 Info : 30M x 0.32mm x0.5 Signal #2 Info : 30M x 0.32mm x0.25µm





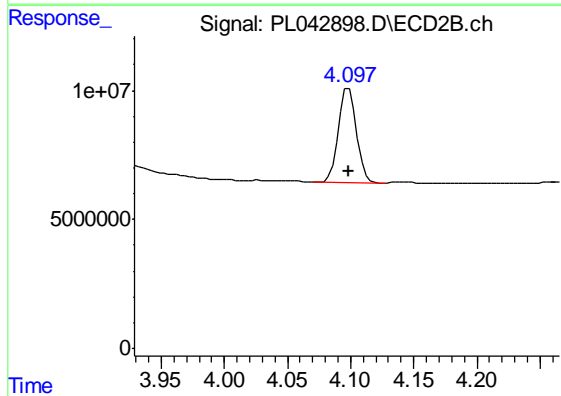
#1 Tetrachloro-m-xylene

R.T.: 3.472 min
 Delta R.T.: 0.008 min
 Response: 74938357
 Conc: 12.22 ng/ml

Instrument :
 ECD_L
 ClientSampleId :
 SU-01-120518-A

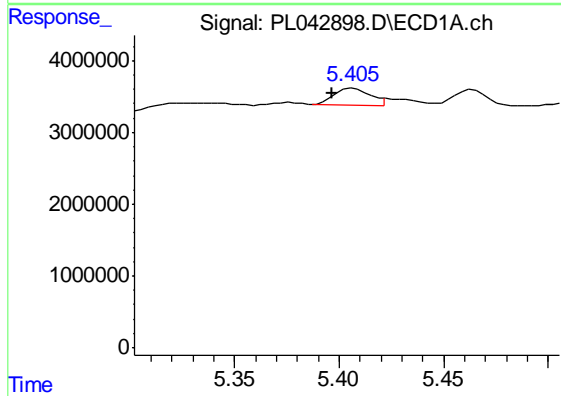
Manual Integrations
 APPROVED

Sohil
 12/11/2018 10:18:12 AM



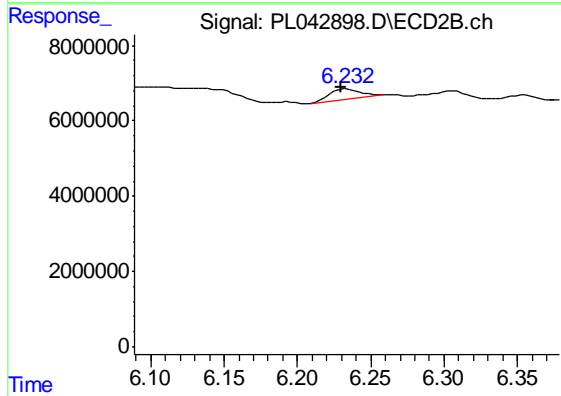
#1 Tetrachloro-m-xylene

R.T.: 4.099 min
 Delta R.T.: 0.000 min
 Response: 36490727
 Conc: 12.31 ng/ml



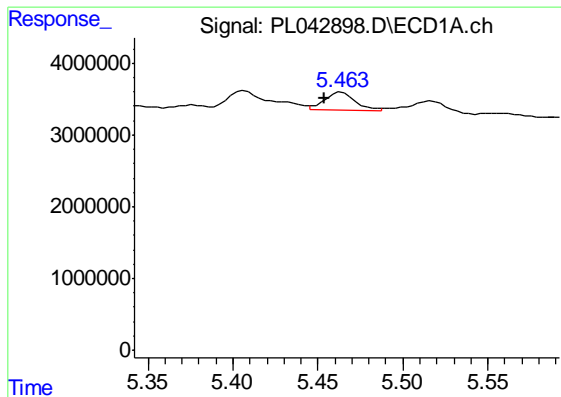
#10 gamma-Chlordane

R.T.: 5.405 min
 Delta R.T.: 0.009 min
 Response: 2661435
 Conc: 0.33 ng/ml m



#10 gamma-Chlordane

R.T.: 6.232 min
 Delta R.T.: 0.002 min
 Response: 4378190
 Conc: 1.19 ng/ml m



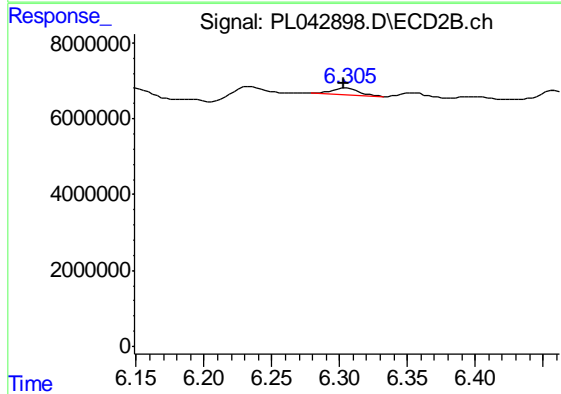
#11 alpha-Chlordane

R.T.: 5.464 min
 Delta R.T.: 0.010 min
 Response: 3087523
 Conc: 0.39 ng/ml

Instrument :
 ECD_L
 ClientSampled :
 SU-01-120518-A

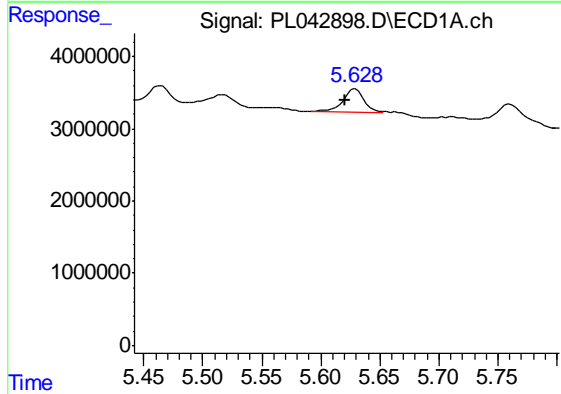
Manual Integrations
 APPROVED

Sohil
 12/11/2018 10:18:12 AM



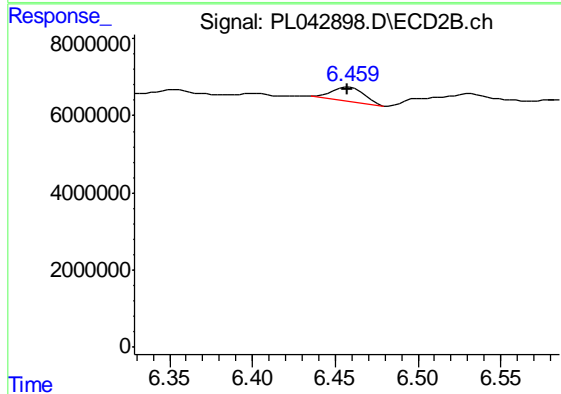
#11 alpha-Chlordane

R.T.: 6.305 min
 Delta R.T.: 0.002 min
 Response: 2335078
 Conc: 0.65 ng/ml m



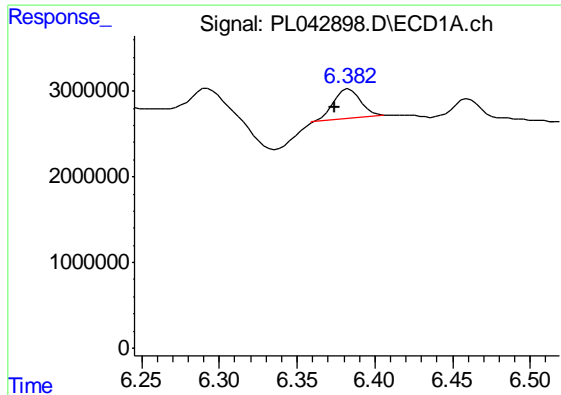
#12 4,4'-DDE

R.T.: 5.628 min
 Delta R.T.: 0.008 min
 Response: 3960050
 Conc: 0.57 ng/ml m



#12 4,4'-DDE

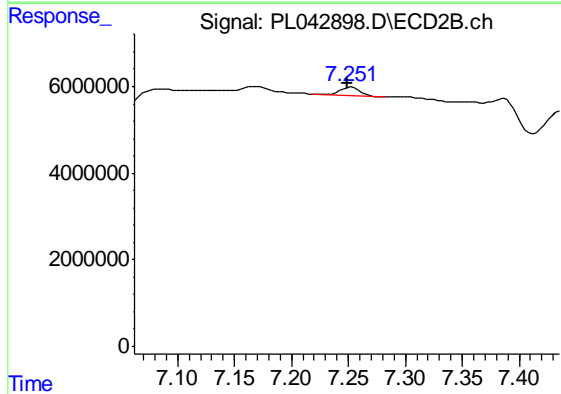
R.T.: 6.459 min
 Delta R.T.: 0.002 min
 Response: 5002706
 Conc: 1.38 ng/ml m



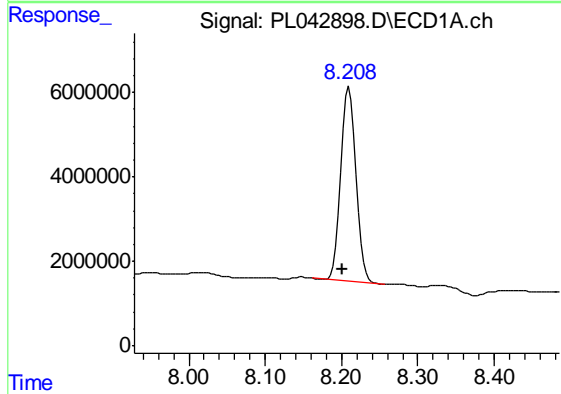
#17 4,4'-DDT
 R.T.: 6.382 min
 Delta R.T.: 0.008 min
 Response: 4080198
 Conc: 0.69 ng/ml m

Instrument :
 ECD_L
ClientSampled :
 SU-01-120518-A

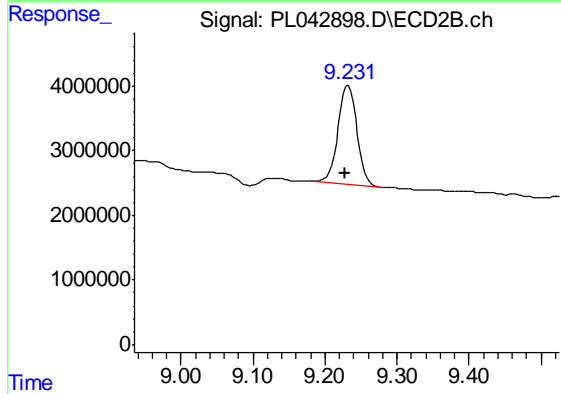
Manual Integrations
APPROVED
 Sohil
 12/11/2018 10:18:12 AM



#17 4,4'-DDT
 R.T.: 7.252 min
 Delta R.T.: 0.003 min
 Response: 2236649
 Conc: 0.76 ng/ml



#28 Decachlorobiphenyl
 R.T.: 8.210 min
 Delta R.T.: 0.009 min
 Response: 63703887
 Conc: 9.76 ng/ml



#28 Decachlorobiphenyl
 R.T.: 9.232 min
 Delta R.T.: 0.005 min
 Response: 27819511
 Conc: 10.66 ng/ml