

Data Path : Z:\pestpcbsrv\HPCHEM1\ECD_L\Data\PL121018\
 Data File : PL042907.D
 Signal(s) : Signal #1: ECD1A.ch Signal #2: ECD2B.ch
 Acq On : 10 Dec 2018 12:34
 Operator : AJ\SJ
 Sample : J6243-03
 Misc :
 ALS Vial : 12 Sample Multiplier: 1

Instrument :
 ECD_L
 ClientSampleId :
 OILY-WATER-A

Integration File signal 1: autoint1.e
 Integration File signal 2: autoint2.e
 Quant Time: Dec 10 12:48:31 2018
 Quant Method : Z:\pestpcbsrv\HPCHEM1\ECD_L\methods\PL120618.M
 Quant Title : GC Extractables
 QLast Update : Fri Dec 07 00:20:08 2018
 Response via : Initial Calibration
 Integrator: ChemStation

Volume Inj. : 2 µl
 Signal #1 Phase : ZB-MR1 Signal #2 Phase: ZB-MR2
 Signal #1 Info : 30M x 0.32mm x0.5 Signal #2 Info : 30M x 0.32mm x0.25µm

Compound	RT#1	RT#2	Resp#1	Resp#2	ng/ml	ng/ml
----------	------	------	--------	--------	-------	-------

 System Monitoring Compounds

1) SA Tetrachlo...	3.463	4.098	56059132	8706218	9.141	2.937 #
28) SA Decachlor...	8.201	9.226	27971966	13626386	4.284	5.224

Target Compounds

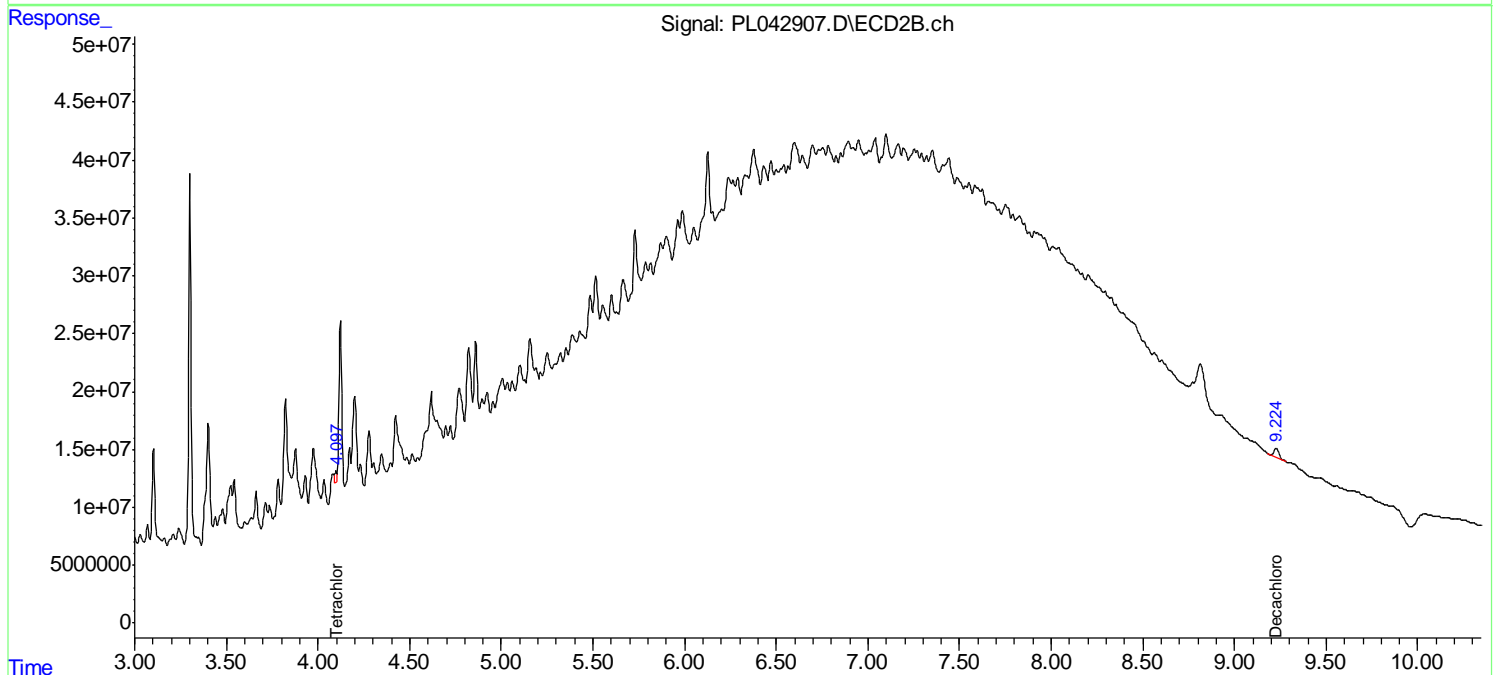
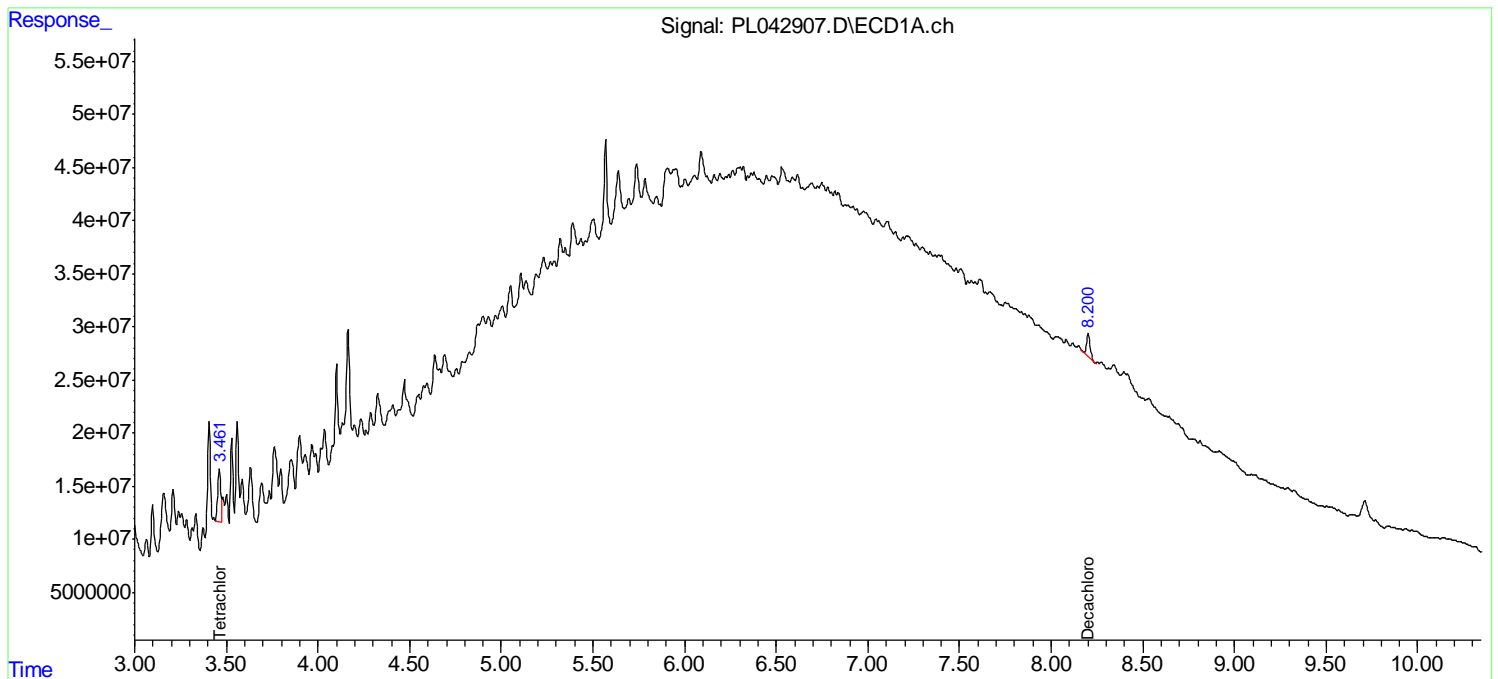
(f)=RT Delta > 1/2 Window (#)=Amounts differ by > 25% (m)=manual int.

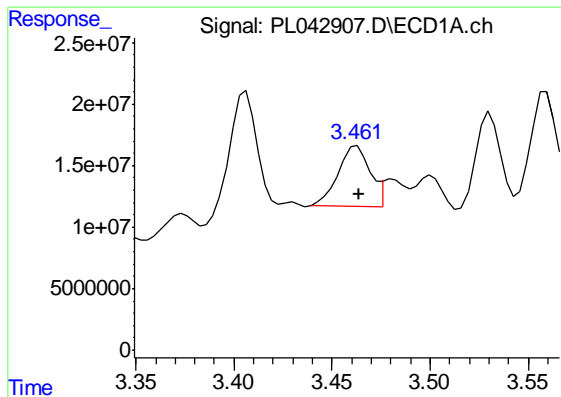
Data Path : Z:\pestpcbsrv\HPCHEM1\ECD_L\Data\PL121018\
 Data File : PL042907.D
 Signal(s) : Signal #1: ECD1A.ch Signal #2: ECD2B.ch
 Acq On : 10 Dec 2018 12:34
 Operator : AJ\SJ
 Sample : J6243-03
 Misc :
 ALS Vial : 12 Sample Multiplier: 1

Instrument :
 ECD_L
 ClientSampleId :
 OILY-WATER-A

Integration File signal 1: autoint1.e
 Integration File signal 2: autoint2.e
 Quant Time: Dec 10 12:48:31 2018
 Quant Method : Z:\pestpcbsrv\HPCHEM1\ECD_L\methods\PL120618.M
 Quant Title : GC Extractables
 QLast Update : Fri Dec 07 00:20:08 2018
 Response via : Initial Calibration
 Integrator: ChemStation

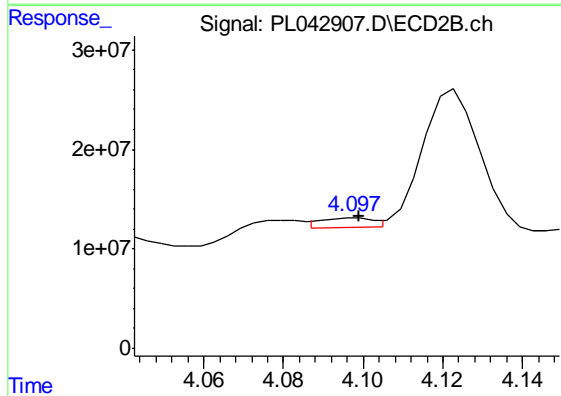
Volume Inj. : 2 µl
 Signal #1 Phase : ZB-MR1 Signal #2 Phase: ZB-MR2
 Signal #1 Info : 30M x 0.32mm x0.5 Signal #2 Info : 30M x 0.32mm x0.25µm



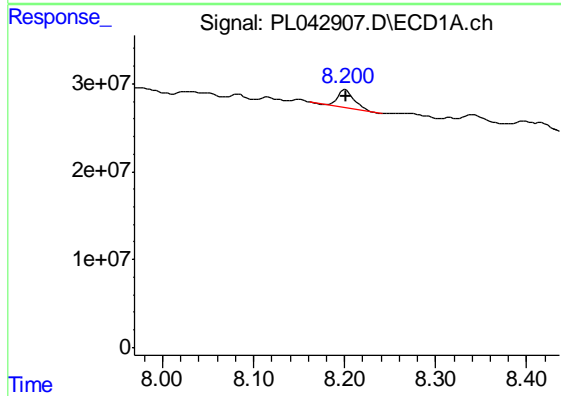


#1 Tetrachloro-m-xylene
 R.T.: 3.463 min
 Delta R.T.: -0.001 min
 Response: 56059132
 Conc: 9.14 ng/ml

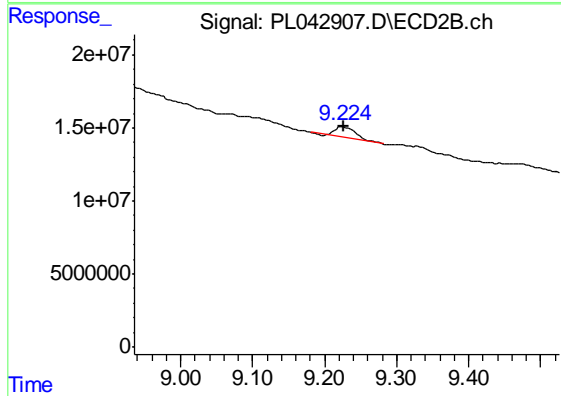
Instrument :
 ECD_L
 ClientSampleId :
 OILY-WATER-A



#1 Tetrachloro-m-xylene
 R.T.: 4.098 min
 Delta R.T.: 0.000 min
 Response: 8706218
 Conc: 2.94 ng/ml



#28 Decachlorobiphenyl
 R.T.: 8.201 min
 Delta R.T.: 0.000 min
 Response: 27971966
 Conc: 4.28 ng/ml



#28 Decachlorobiphenyl
 R.T.: 9.226 min
 Delta R.T.: -0.001 min
 Response: 13626386
 Conc: 5.22 ng/ml