

Data Path : Z:\pestpcbsrv\HPCHEM1\ECD_L\Data\PL121018\
 Data File : PL042911.D
 Signal(s) : Signal #1: ECD1A.ch Signal #2: ECD2B.ch
 Acq On : 10 Dec 2018 14:05
 Operator : AJ\SJ
 Sample : PSTDCCC050
 Misc :
 ALS Vial : 4 Sample Multiplier: 1

Instrument :
 ECD_L
Client Sampled :
 PSTDCCC050

Manual Integrations
APPROVED
 Sohil
 12/11/2018 10:18:21 AM

Integration File signal 1: autoint1.e
 Integration File signal 2: autoint2.e
 Quant Time: Dec 11 00:46:35 2018
 Quant Method : Z:\pestpcbsrv\HPCHEM1\ECD_L\methods\PL120618.M
 Quant Title : GC Extractables
 QLast Update : Fri Dec 07 00:20:08 2018
 Response via : Initial Calibration
 Integrator: ChemStation

Volume Inj. : 2 µl
 Signal #1 Phase : ZB-MR1 Signal #2 Phase: ZB-MR2
 Signal #1 Info : 30M x 0.32mm x0.5 Signal #2 Info : 30M x 0.32mm x0.25µm

Compound	RT#1	RT#2	Resp#1	Resp#2	ng/ml	ng/ml

System Monitoring Compounds						
1) SA Tetrachlo...	3.466	4.099	321.6E6	159.6E6	52.433	53.859
28) SA Decachlor...	8.203	9.229	301.3E6	128.2E6	46.142	49.154
Target Compounds						
2) A alpha-BHC	3.905	4.495	507.6E6	244.3E6	53.695	54.005
3) MA gamma-BHC...	4.188	4.783	461.8E6	223.8E6	53.478	53.361
4) MA Heptachlor	4.483	5.299	443.9E6	205.1E6	50.035	50.060
5) MB Aldrin	4.730	5.608	452.9E6	217.3E6	53.422	53.226
6) B beta-BHC	4.442	4.953	188.8E6	92304680	51.192	54.524
7) B delta-BHC	4.644	5.172	438.2E6	222.2E6	54.108	51.700m
8) B Heptachlo...	5.173	5.996	408.8E6	196.0E6	51.565	51.682
9) A Endosulfan I	5.510	6.356	375.1E6	176.6E6	51.198	52.014
10) B gamma-Chl...	5.397	6.229	420.5E6	192.7E6	52.160m	52.458m
11) B alpha-Chl...	5.456	6.304	403.5E6	186.9E6	50.829	51.967
12) B 4,4'-DDE	5.622	6.459	372.4E6	188.2E6	53.795	51.924
13) MA Dieldrin	5.753	6.614	405.2E6	189.6E6	52.123	52.297
14) MA Endrin	6.009	6.834	364.2E6	154.6E6	50.581	49.529
15) B Endosulfa...	6.283	7.042	329.5E6	155.8E6	49.526m	51.440
16) A 4,4'-DDD	6.137	6.951	296.7E6	148.8E6	52.327	50.732
17) MA 4,4'-DDT	6.374	7.251	278.0E6	136.8E6	46.734m	46.562
18) B Endrin al...	6.452	7.167	267.7E6	127.6E6	48.571	50.890
19) B Endosulfa...	6.665	7.390	340.3E6	153.1E6	50.801	50.915
20) A Methoxychlor	6.922	7.707	150.3E6	66546294	44.783	44.120
21) B Endrin ke...	7.154	7.865	359.0E6	152.3E6	49.643	49.834

(f)=RT Delta > 1/2 Window (#)=Amounts differ by > 25% (m)=manual int.

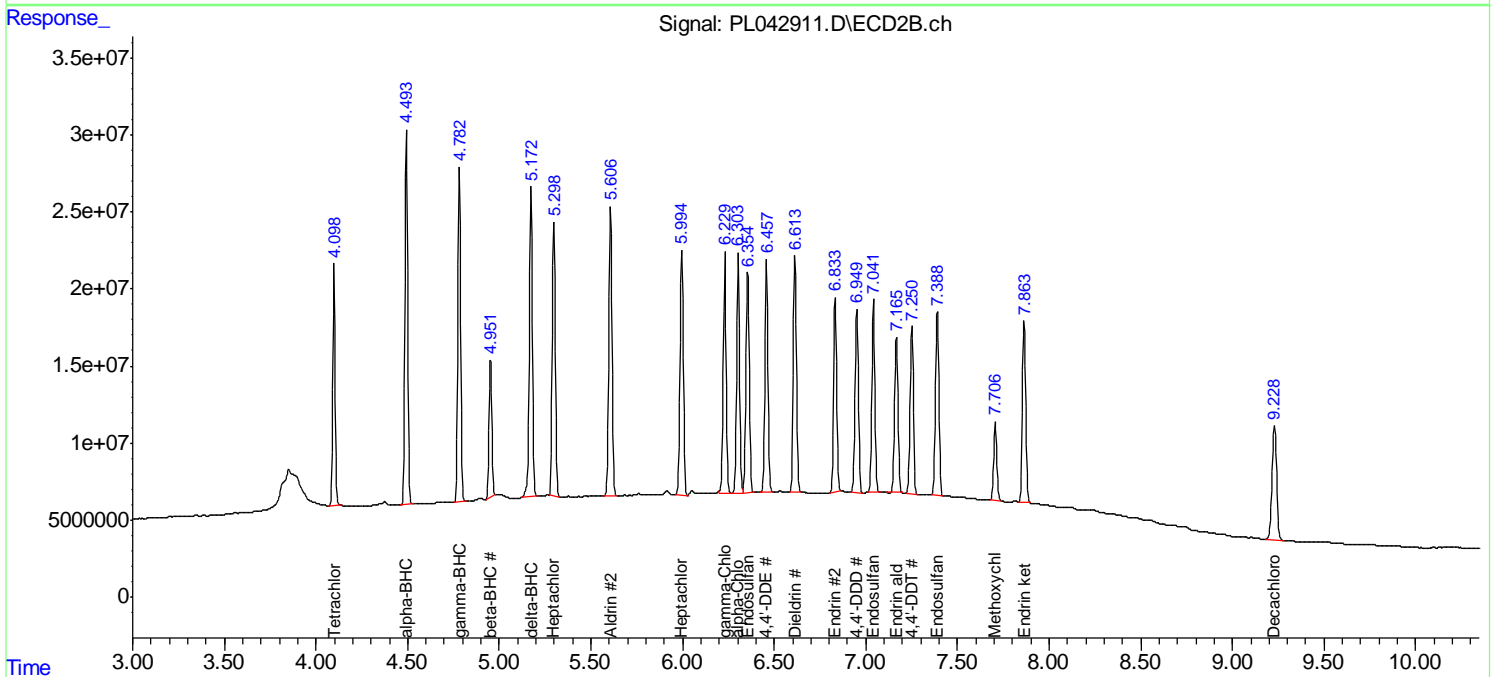
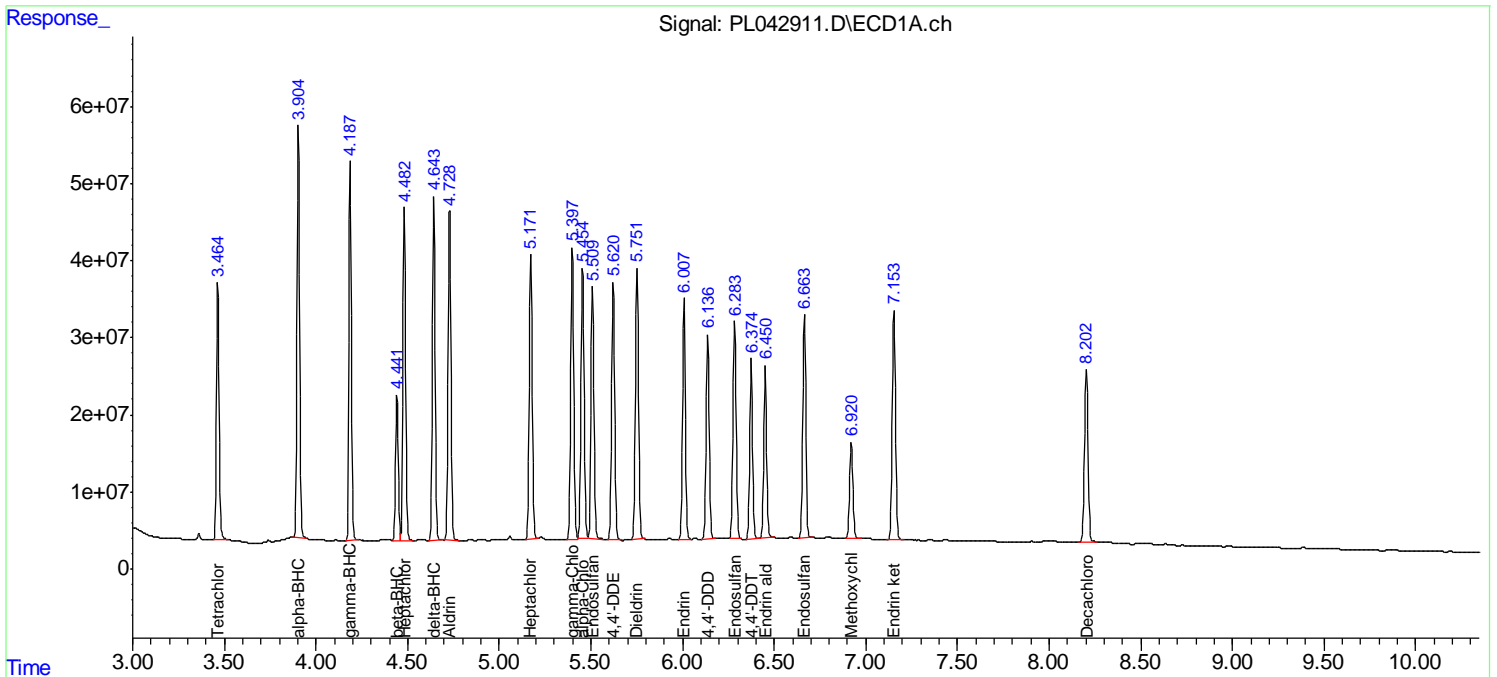
Data Path : Z:\pestpcbsrv\HPCHEM1\ECD_L\Data\PL121018\
 Data File : PL042911.D
 Signal(s) : Signal #1: ECD1A.ch Signal #2: ECD2B.ch
 Acq On : 10 Dec 2018 14:05
 Operator : AJ\SJ
 Sample : PSTDCCC050
 Misc :
 ALS Vial : 4 Sample Multiplier: 1

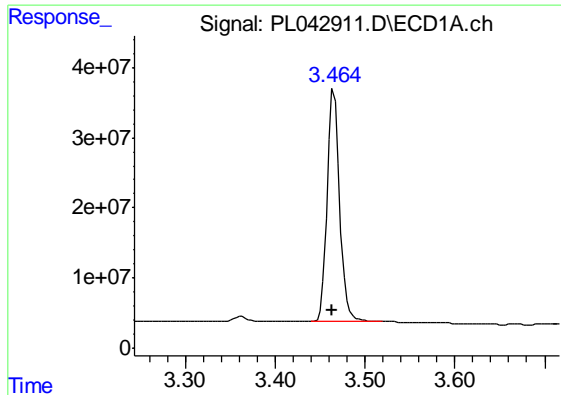
Instrument :
 ECD_L
Client Sampled :
 PSTDCCC050

Manual Integrations
APPROVED
 Sohil
 12/11/2018 10:18:21 AM

Integration File signal 1: autoint1.e
 Integration File signal 2: autoint2.e
 Quant Time: Dec 11 00:46:35 2018
 Quant Method : Z:\pestpcbsrv\HPCHEM1\ECD_L\methods\PL120618.M
 Quant Title : GC Extractables
 QLast Update : Fri Dec 07 00:20:08 2018
 Response via : Initial Calibration
 Integrator: ChemStation

Volume Inj. : 2 µl
 Signal #1 Phase : ZB-MR1 Signal #2 Phase: ZB-MR2
 Signal #1 Info : 30M x 0.32mm x0.5 Signal #2 Info : 30M x 0.32mm x0.25µm





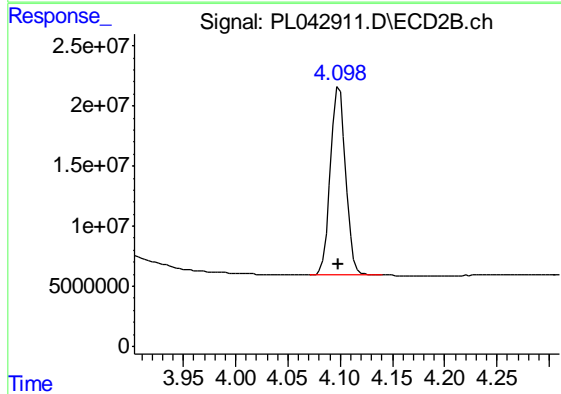
#1 Tetrachloro-m-xylene

R.T.: 3.466 min
 Delta R.T.: 0.002 min
 Response: 321568012
 Conc: 52.43 ng/ml

Instrument :
 ECD_L
 ClientSampleId :
 PSTDCCC050

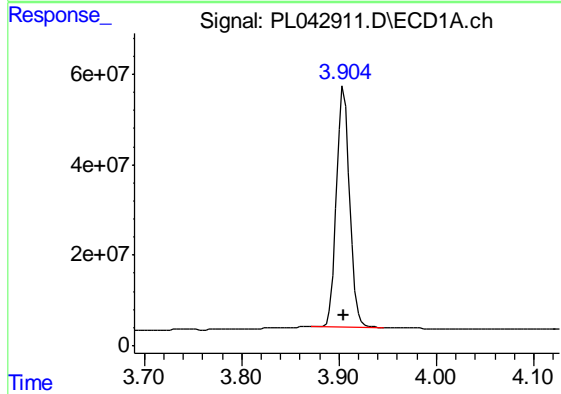
Manual Integrations
 APPROVED

Sohil
 12/11/2018 10:18:21 AM



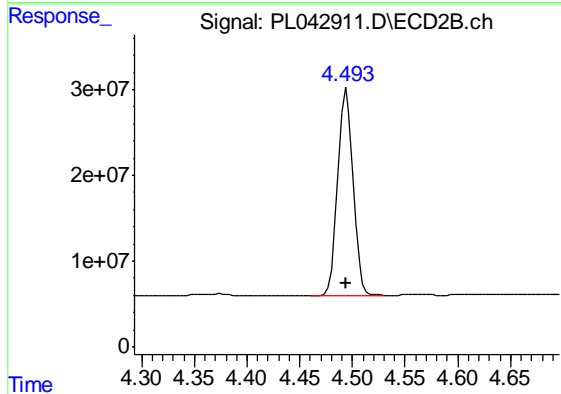
#1 Tetrachloro-m-xylene

R.T.: 4.099 min
 Delta R.T.: 0.000 min
 Response: 159631504
 Conc: 53.86 ng/ml



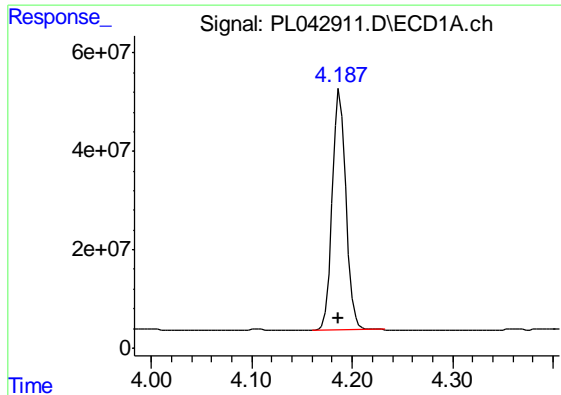
#2 alpha-BHC

R.T.: 3.905 min
 Delta R.T.: 0.000 min
 Response: 507596632
 Conc: 53.69 ng/ml



#2 alpha-BHC

R.T.: 4.495 min
 Delta R.T.: 0.000 min
 Response: 244291917
 Conc: 54.01 ng/ml



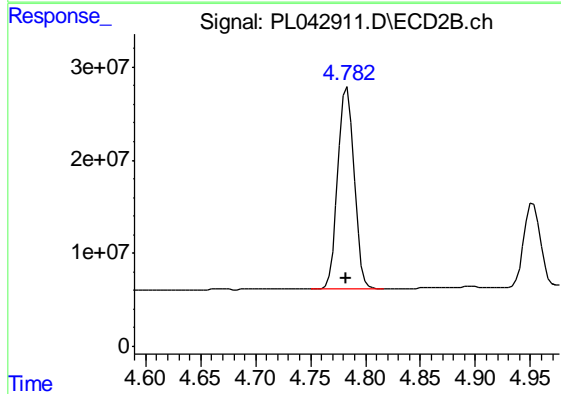
#3 gamma-BHC (Lindane)

R.T.: 4.188 min
 Delta R.T.: 0.001 min
 Response: 461756205
 Conc: 53.48 ng/ml

Instrument :
 ECD_L
 ClientSampleId :
 PSTDCCC050

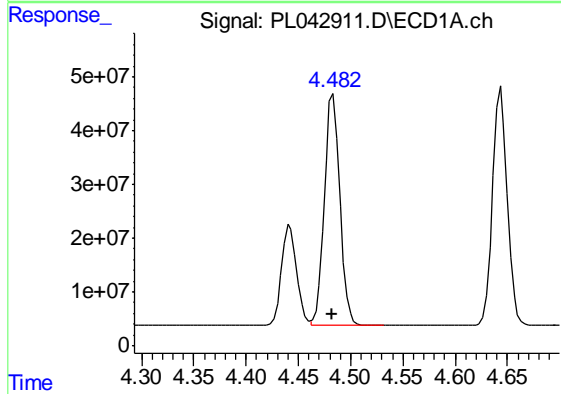
Manual Integrations
 APPROVED

Sohil
 12/11/2018 10:18:21 AM



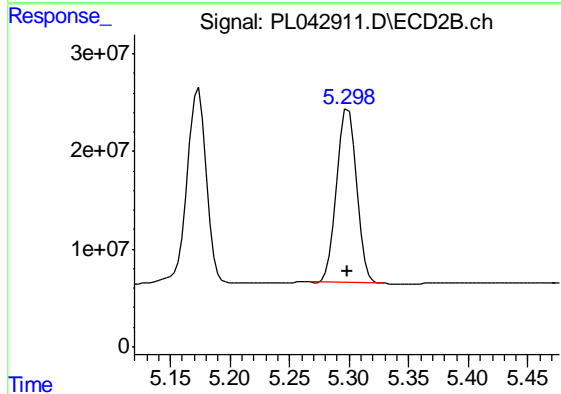
#3 gamma-BHC (Lindane)

R.T.: 4.783 min
 Delta R.T.: 0.000 min
 Response: 223804327
 Conc: 53.36 ng/ml



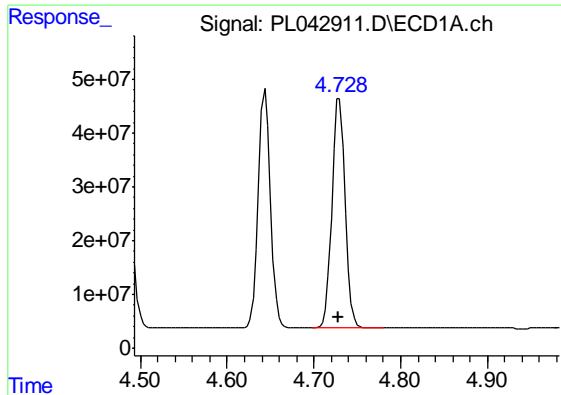
#4 Heptachlor

R.T.: 4.483 min
 Delta R.T.: 0.001 min
 Response: 443939654
 Conc: 50.03 ng/ml



#4 Heptachlor

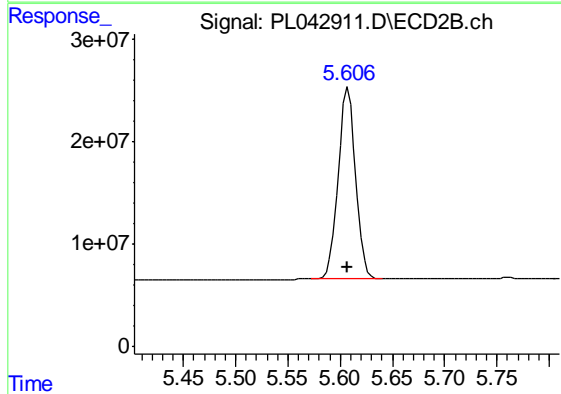
R.T.: 5.299 min
 Delta R.T.: 0.000 min
 Response: 205063304
 Conc: 50.06 ng/ml



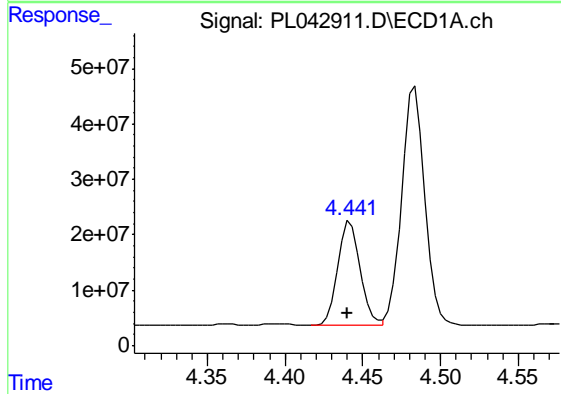
#5 Aldrin
 R.T.: 4.730 min
 Delta R.T.: 0.001 min
 Response: 452946160
 Conc: 53.42 ng/ml

Instrument :
 ECD_L
 ClientSampled :
 PSTDCCC050

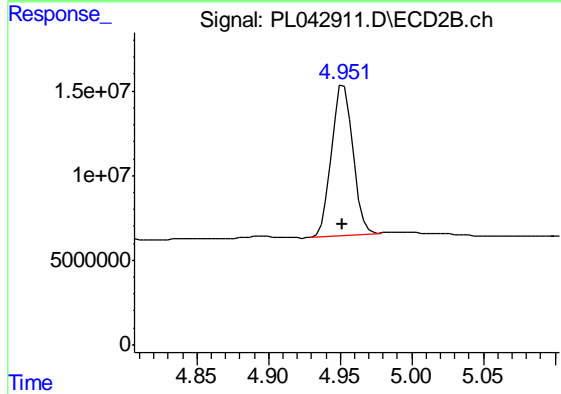
Manual Integrations
 APPROVED
 Sohil
 12/11/2018 10:18:21 AM



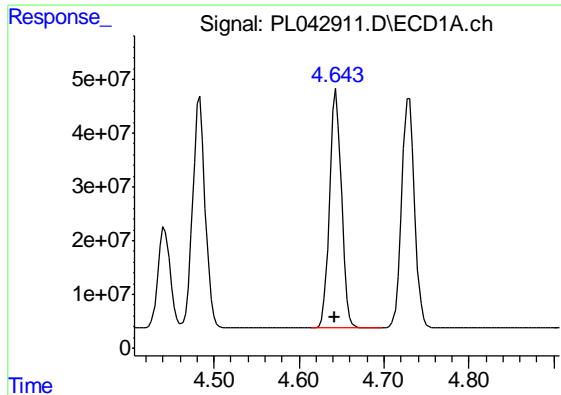
#5 Aldrin
 R.T.: 5.608 min
 Delta R.T.: 0.000 min
 Response: 217267717
 Conc: 53.23 ng/ml



#6 beta-BHC
 R.T.: 4.442 min
 Delta R.T.: 0.002 min
 Response: 188822712
 Conc: 51.19 ng/ml



#6 beta-BHC
 R.T.: 4.953 min
 Delta R.T.: 0.000 min
 Response: 92304680
 Conc: 54.52 ng/ml



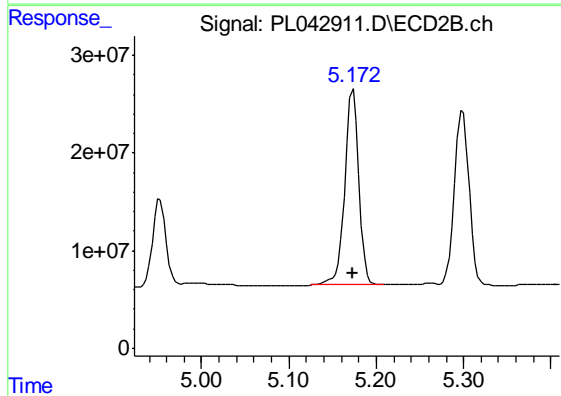
#7 delta-BHC

R.T.: 4.644 min
 Delta R.T.: 0.001 min
 Response: 438177973
 Conc: 54.11 ng/ml

Instrument :
 ECD_L
 ClientSampled :
 PSTDCCC050

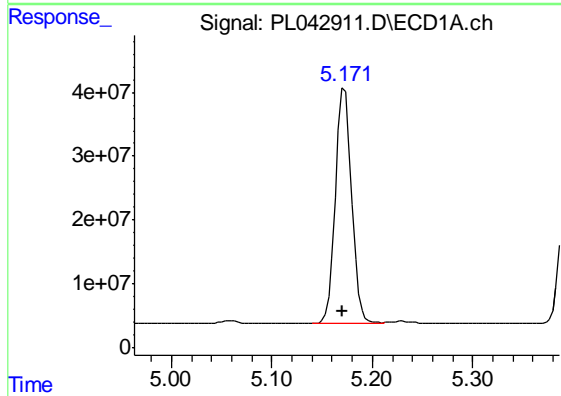
Manual Integrations
 APPROVED

Sohil
 12/11/2018 10:18:21 AM



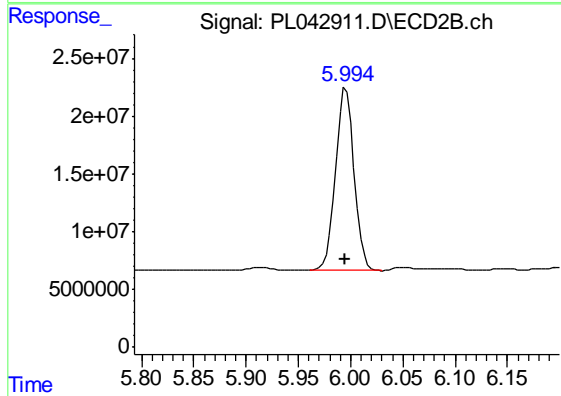
#7 delta-BHC

R.T.: 5.172 min
 Delta R.T.: 0.000 min
 Response: 222183828
 Conc: 51.70 ng/ml m



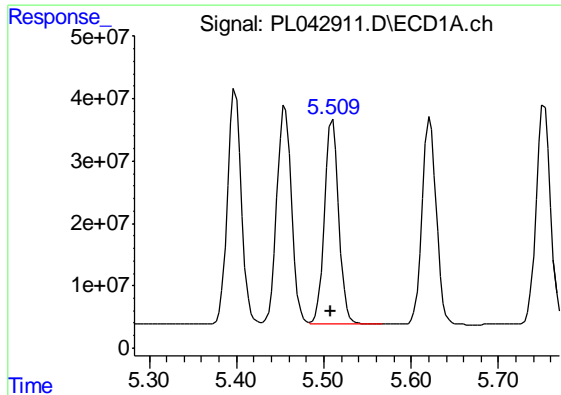
#8 Heptachlor epoxide

R.T.: 5.173 min
 Delta R.T.: 0.002 min
 Response: 408752745
 Conc: 51.57 ng/ml



#8 Heptachlor epoxide

R.T.: 5.996 min
 Delta R.T.: 0.000 min
 Response: 195978875
 Conc: 51.68 ng/ml

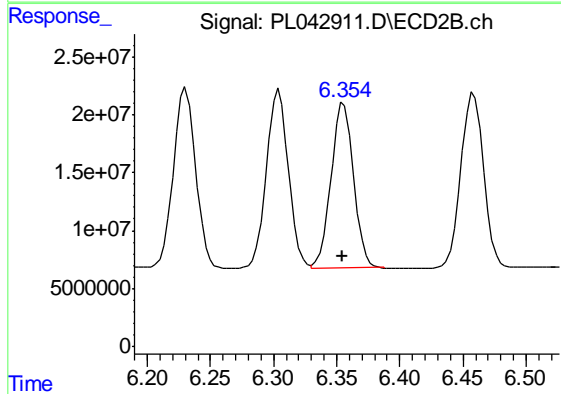


#9 Endosulfan I

R.T.: 5.510 min
 Delta R.T.: 0.002 min
 Response: 375068470
 Conc: 51.20 ng/ml

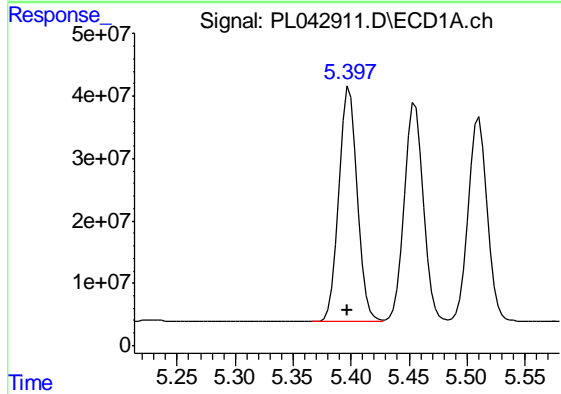
Instrument :
 ECD_L
 ClientSampled :
 PSTDCCC050

Manual Integrations
 APPROVED
 Sohil
 12/11/2018 10:18:21 AM



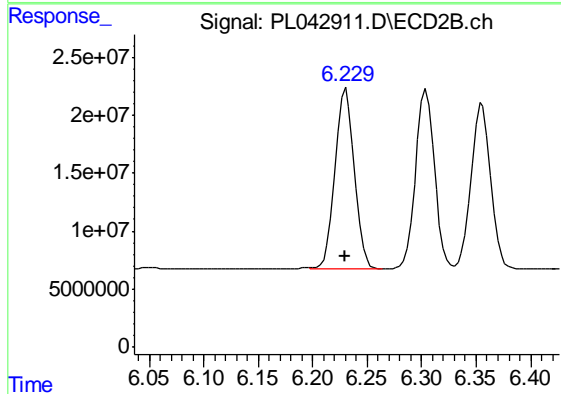
#9 Endosulfan I

R.T.: 6.356 min
 Delta R.T.: 0.001 min
 Response: 176605704
 Conc: 52.01 ng/ml



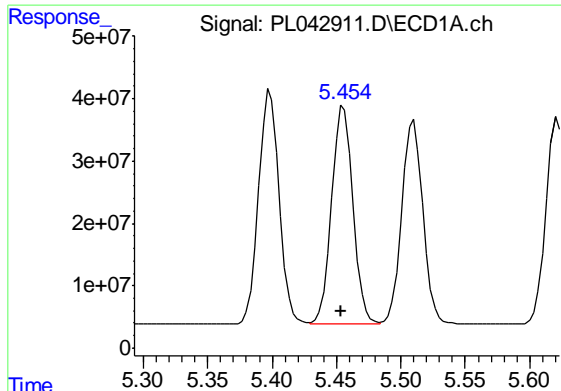
#10 gamma-Chlordane

R.T.: 5.397 min
 Delta R.T.: 0.000 min
 Response: 420506044
 Conc: 52.16 ng/ml m



#10 gamma-Chlordane

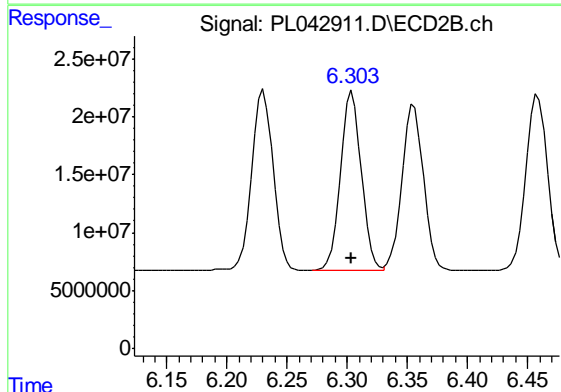
R.T.: 6.229 min
 Delta R.T.: 0.000 min
 Response: 192709675
 Conc: 52.46 ng/ml m



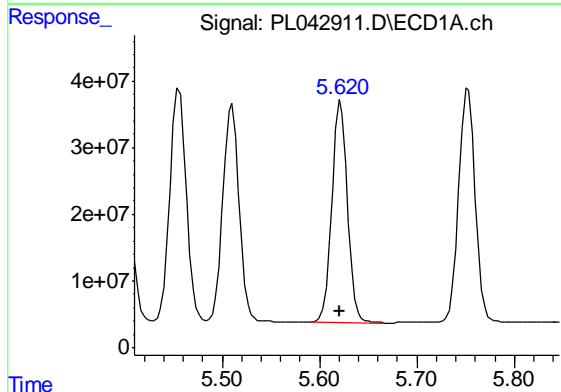
#11 alpha-Chlordane
 R.T.: 5.456 min
 Delta R.T.: 0.002 min
 Response: 403540461
 Conc: 50.83 ng/ml

Instrument :
 ECD_L
 ClientSampled :
 PSTDCCC050

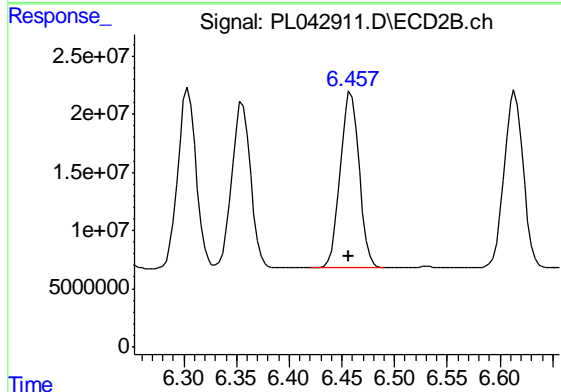
Manual Integrations
 APPROVED
 Sohil
 12/11/2018 10:18:21 AM



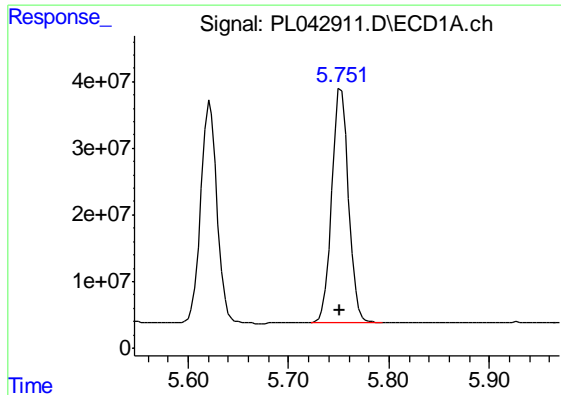
#11 alpha-Chlordane
 R.T.: 6.304 min
 Delta R.T.: 0.001 min
 Response: 186895336
 Conc: 51.97 ng/ml



#12 4,4'-DDE
 R.T.: 5.622 min
 Delta R.T.: 0.001 min
 Response: 372424235
 Conc: 53.80 ng/ml



#12 4,4'-DDE
 R.T.: 6.459 min
 Delta R.T.: 0.002 min
 Response: 188159569
 Conc: 51.92 ng/ml



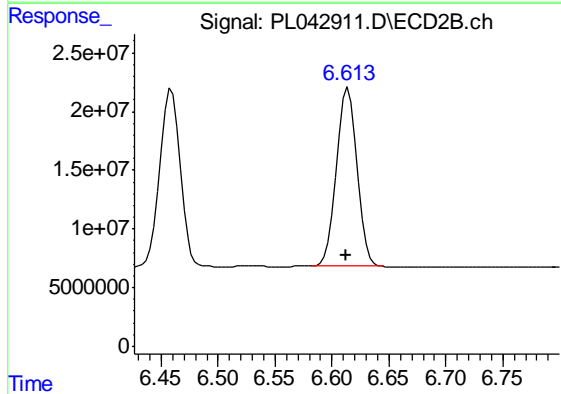
#13 Dieldrin

R.T.: 5.753 min
 Delta R.T.: 0.002 min
 Response: 405248947
 Conc: 52.12 ng/ml

Instrument :
 ECD_L
 ClientSampled :
 PSTDCCC050

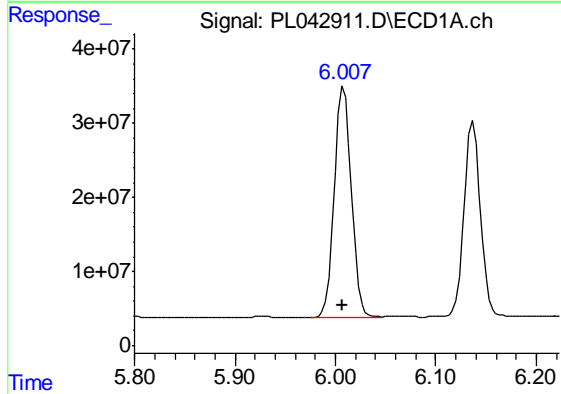
Manual Integrations
 APPROVED

Sohil
 12/11/2018 10:18:21 AM



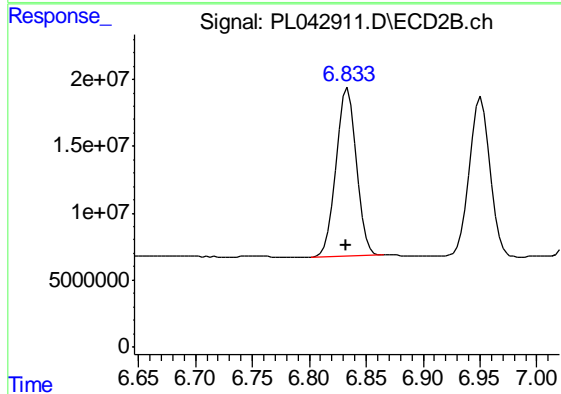
#13 Dieldrin

R.T.: 6.614 min
 Delta R.T.: 0.001 min
 Response: 189613340
 Conc: 52.30 ng/ml



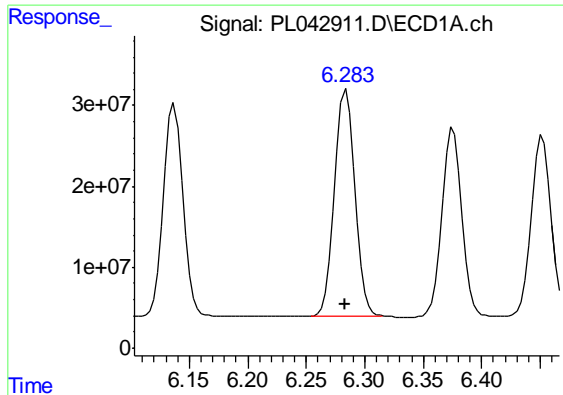
#14 Endrin

R.T.: 6.009 min
 Delta R.T.: 0.002 min
 Response: 364205434
 Conc: 50.58 ng/ml



#14 Endrin

R.T.: 6.834 min
 Delta R.T.: 0.002 min
 Response: 154628881
 Conc: 49.53 ng/ml



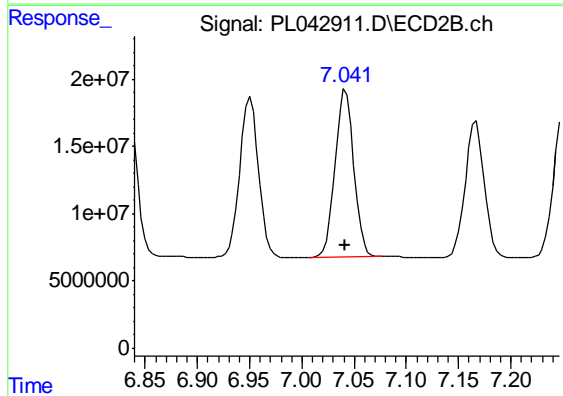
#15 Endosulfan II

R.T.: 6.283 min
 Delta R.T.: 0.000 min
 Response: 329454920
 Conc: 49.53 ng/ml m

Instrument :
 ECD_L
 ClientSampled :
 PSTDCCC050

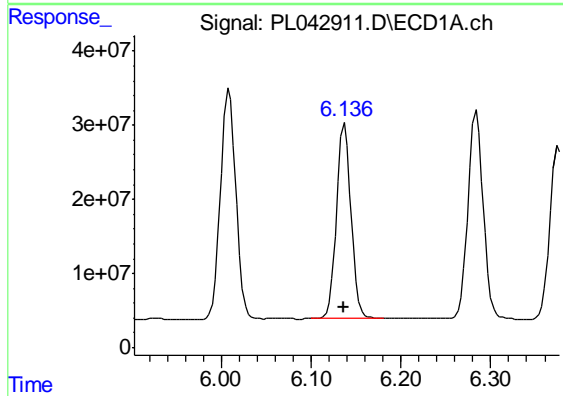
Manual Integrations
 APPROVED

Sohil
 12/11/2018 10:18:21 AM



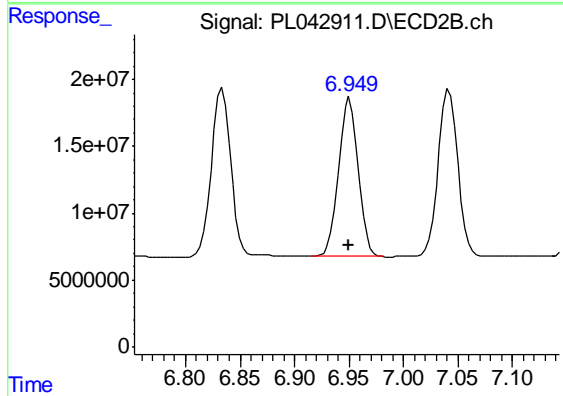
#15 Endosulfan II

R.T.: 7.042 min
 Delta R.T.: 0.001 min
 Response: 155756097
 Conc: 51.44 ng/ml



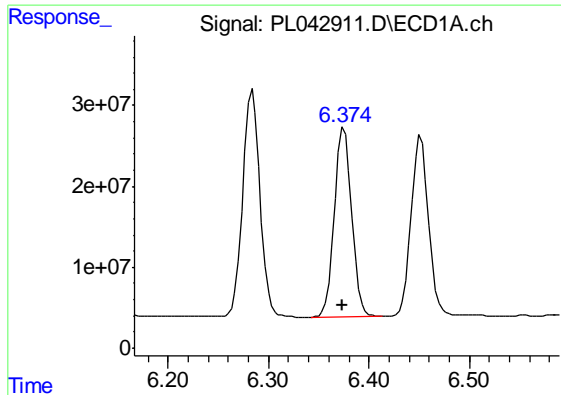
#16 4,4'-DDD

R.T.: 6.137 min
 Delta R.T.: 0.001 min
 Response: 296747866
 Conc: 52.33 ng/ml



#16 4,4'-DDD

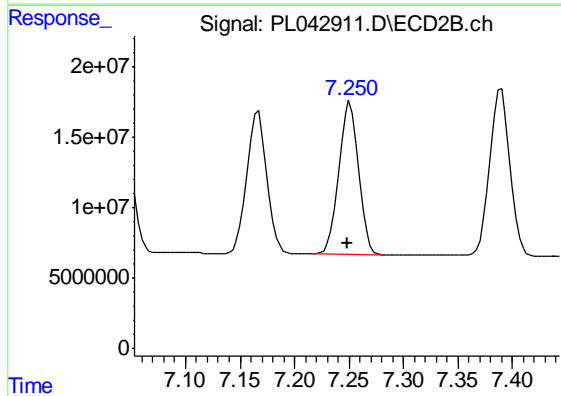
R.T.: 6.951 min
 Delta R.T.: 0.001 min
 Response: 148775121
 Conc: 50.73 ng/ml



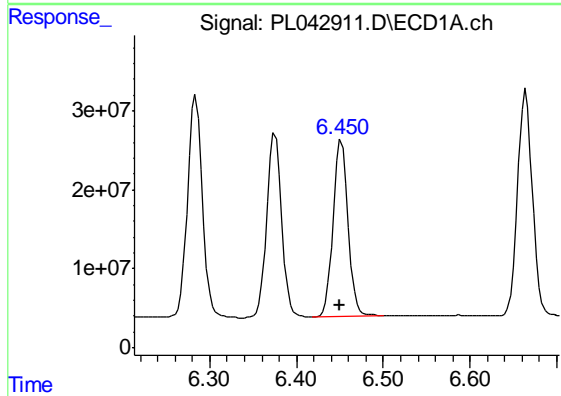
#17 4,4'-DDT
 R.T.: 6.374 min
 Delta R.T.: 0.000 min
 Response: 278019512
 Conc: 46.73 ng/ml m

Instrument :
 ECD_L
ClientSampled :
 PSTDCCC050

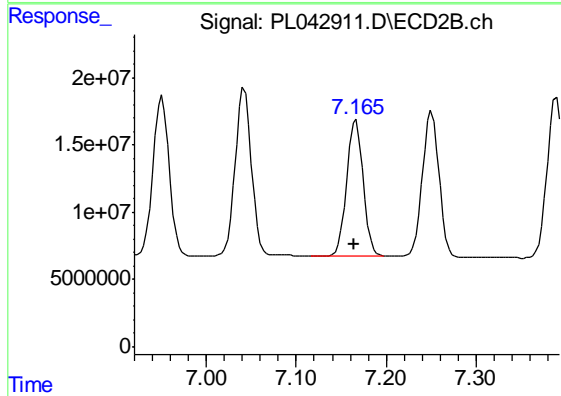
Manual Integrations
APPROVED
 Sohil
 12/11/2018 10:18:21 AM



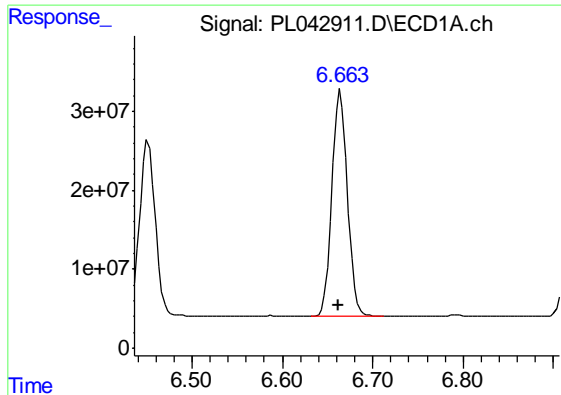
#17 4,4'-DDT
 R.T.: 7.251 min
 Delta R.T.: 0.002 min
 Response: 136756468
 Conc: 46.56 ng/ml



#18 Endrin aldehyde
 R.T.: 6.452 min
 Delta R.T.: 0.002 min
 Response: 267661733
 Conc: 48.57 ng/ml



#18 Endrin aldehyde
 R.T.: 7.167 min
 Delta R.T.: 0.002 min
 Response: 127646101
 Conc: 50.89 ng/ml



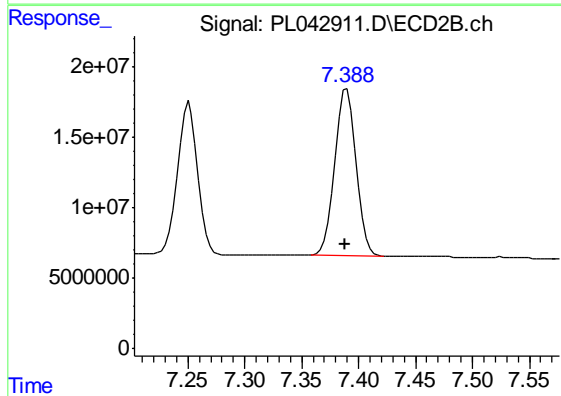
#19 Endosulfan Sulfate

R.T.: 6.665 min
 Delta R.T.: 0.002 min
 Response: 340307867
 Conc: 50.80 ng/ml

Instrument :
 ECD_L
 ClientSampled :
 PSTDCCC050

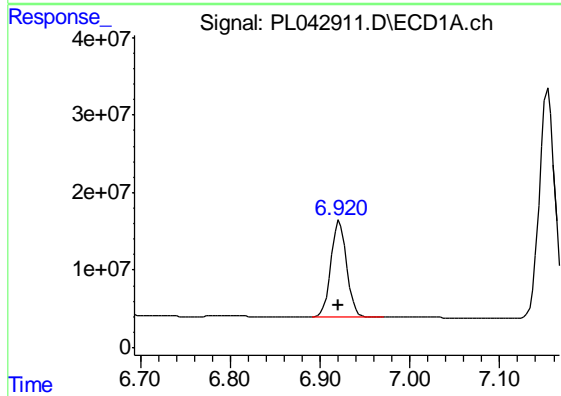
Manual Integrations
 APPROVED

Sohil
 12/11/2018 10:18:21 AM



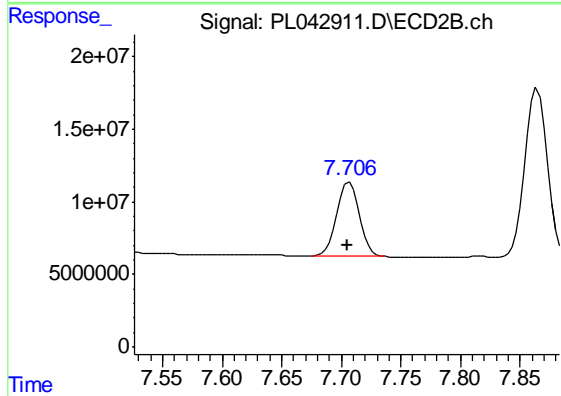
#19 Endosulfan Sulfate

R.T.: 7.390 min
 Delta R.T.: 0.001 min
 Response: 153079477
 Conc: 50.91 ng/ml



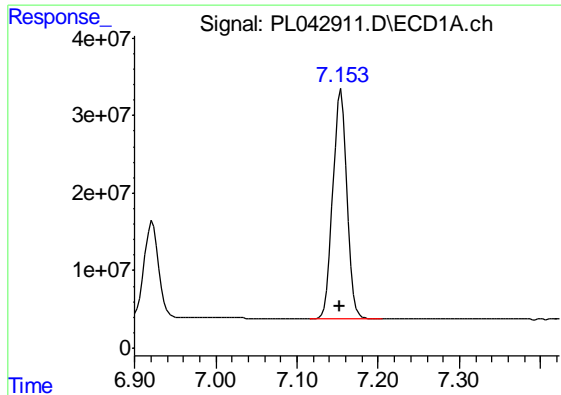
#20 Methoxychlor

R.T.: 6.922 min
 Delta R.T.: 0.001 min
 Response: 150266064
 Conc: 44.78 ng/ml



#20 Methoxychlor

R.T.: 7.707 min
 Delta R.T.: 0.001 min
 Response: 66546294
 Conc: 44.12 ng/ml



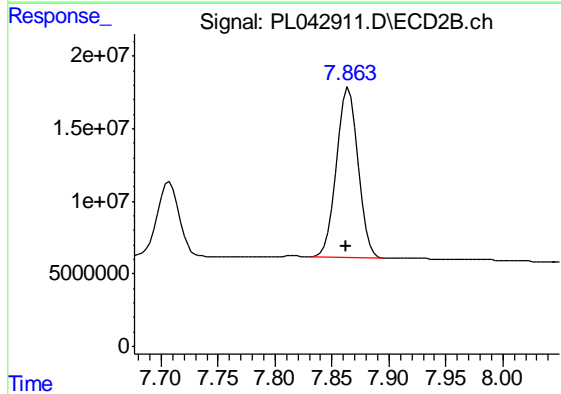
#21 Endrin ketone

R.T.: 7.154 min
 Delta R.T.: 0.001 min
 Response: 358956057
 Conc: 49.64 ng/ml

Instrument :
 ECD_L
 ClientSampleId :
 PSTDCCC050

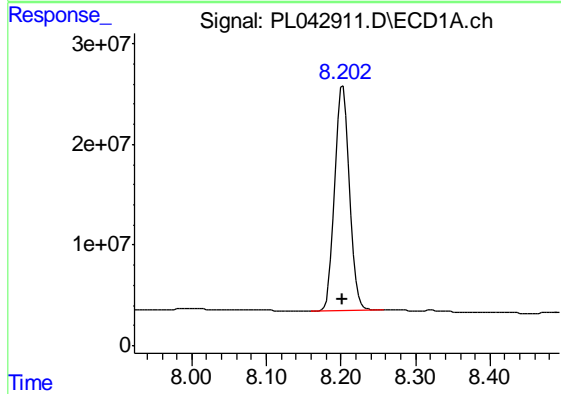
Manual Integrations
 APPROVED

Sohil
 12/11/2018 10:18:21 AM



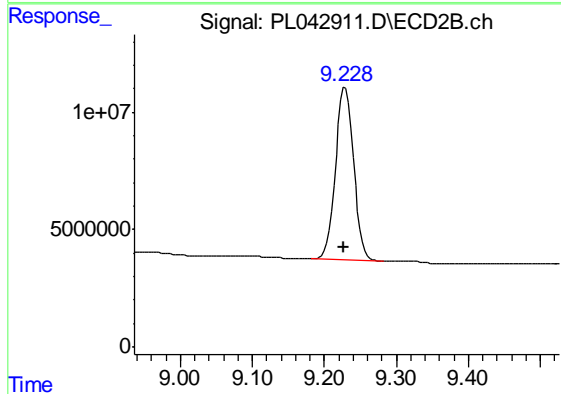
#21 Endrin ketone

R.T.: 7.865 min
 Delta R.T.: 0.002 min
 Response: 152323555
 Conc: 49.83 ng/ml



#28 Decachlorobiphenyl

R.T.: 8.203 min
 Delta R.T.: 0.002 min
 Response: 301304899
 Conc: 46.14 ng/ml



#28 Decachlorobiphenyl

R.T.: 9.229 min
 Delta R.T.: 0.002 min
 Response: 128218581
 Conc: 49.15 ng/ml