

Data Path : Z:\pestpcbsrv\HPCHEM1\ECD_L\Data\PL121018\
 Data File : PL042915.D
 Signal(s) : Signal #1: ECD1A.ch Signal #2: ECD2B.ch
 Acq On : 10 Dec 2018 15:44
 Operator : AJ\SJ
 Sample : J6224-01
 Misc :
 ALS Vial : 19 Sample Multiplier: 1

Instrument :
 ECD_L
 ClientSampled :
 S-1

Manual Integrations
 APPROVED

Sohil
 12/11/2018 10:18:26 AM

Integration File signal 1: autoint1.e
 Integration File signal 2: autoint2.e
 Quant Time: Dec 11 00:47:01 2018
 Quant Method : Z:\pestpcbsrv\HPCHEM1\ECD_L\methods\PL120618.M
 Quant Title : GC Extractables
 QLast Update : Fri Dec 07 00:20:08 2018
 Response via : Initial Calibration
 Integrator: ChemStation

Volume Inj. : 2 µl
 Signal #1 Phase : ZB-MR1 Signal #2 Phase: ZB-MR2
 Signal #1 Info : 30M x 0.32mm x0.5 Signal #2 Info : 30M x 0.32mm x0.25µm

Compound	RT#1	RT#2	Resp#1	Resp#2	ng/ml	ng/ml

System Monitoring Compounds						
1) SA Tetrachlo...	3.464	4.099	81936963	43008068	13.360	14.511
28) SA Decachlor...	8.201	9.228	79459571	31473102	12.168	12.066
Target Compounds						
12) B 4,4'-DDE	5.618	6.458	15833891	6103518	2.287m	1.684m#
17) MA 4,4'-DDT	6.371	7.250	7222215	7134583	1.214m	2.429m#

(f)=RT Delta > 1/2 Window (#)=Amounts differ by > 25% (m)=manual int.

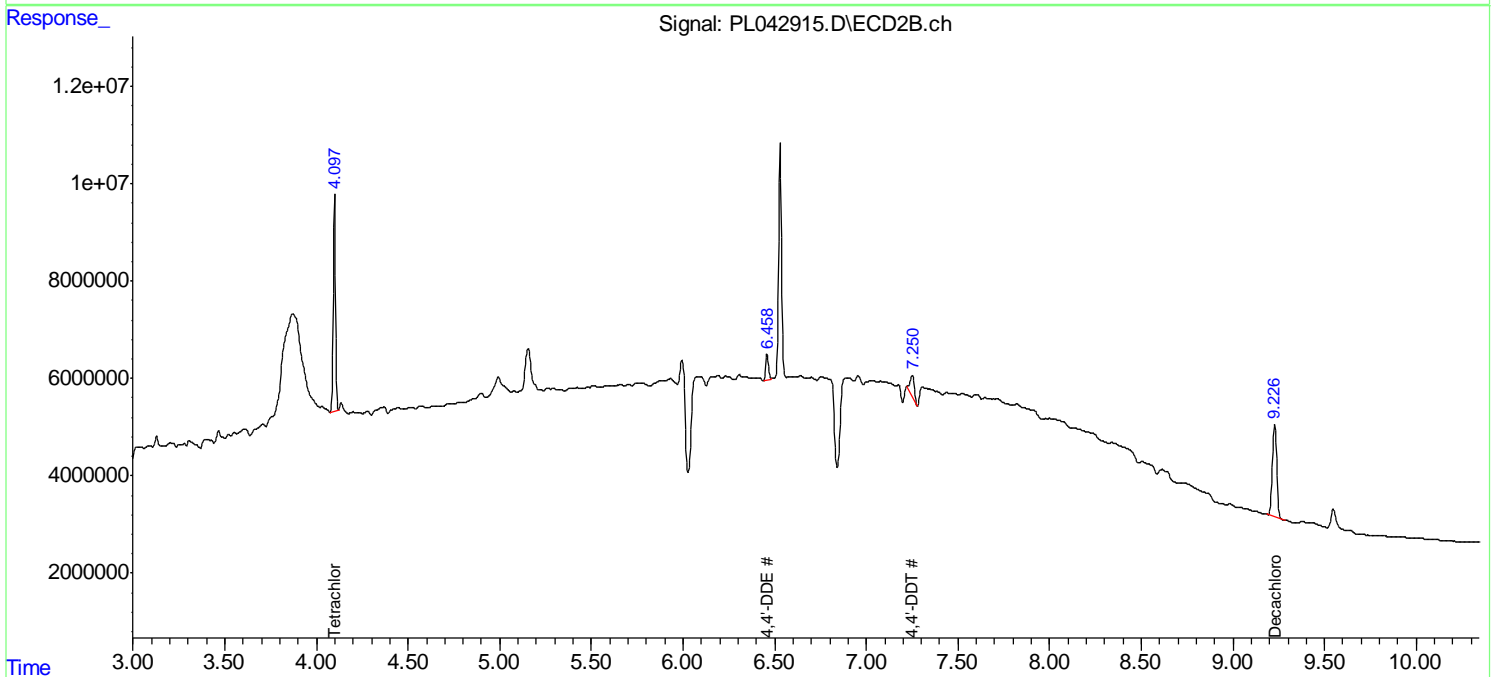
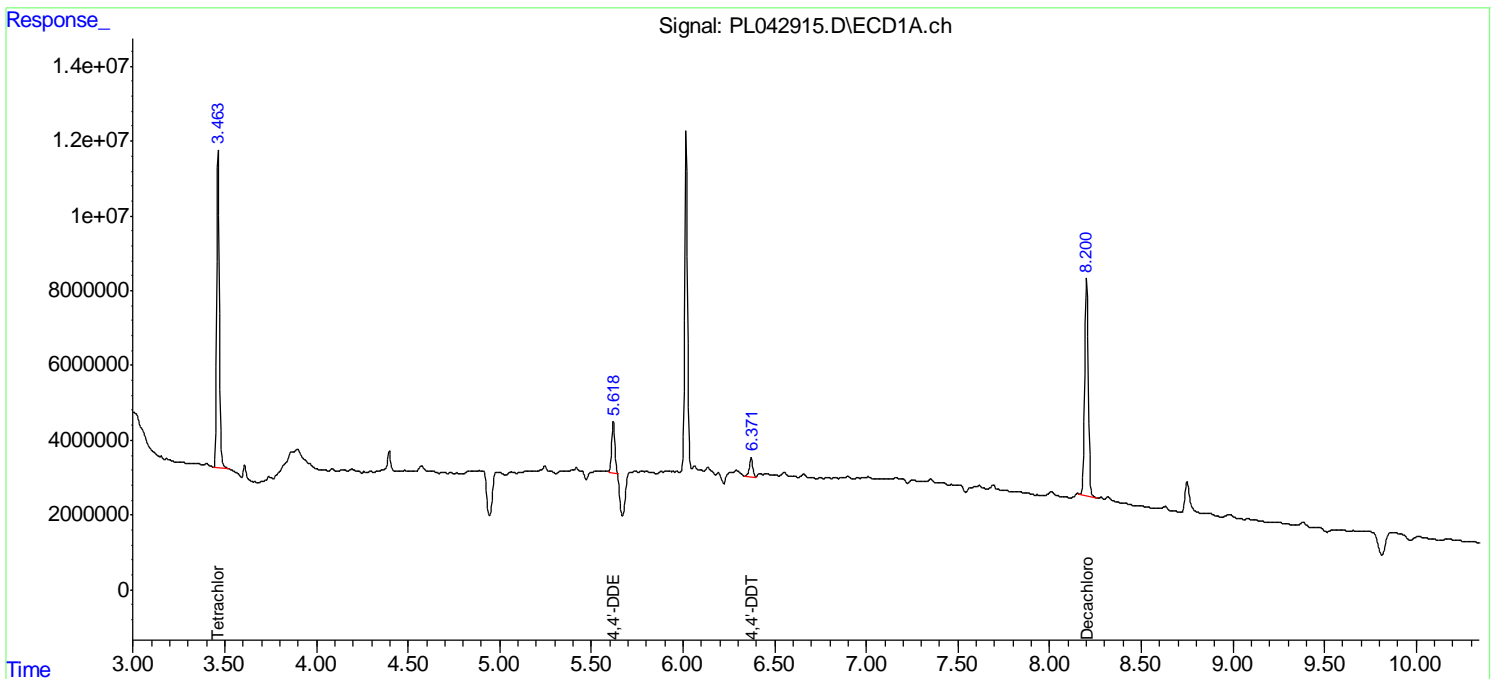
Data Path : Z:\pestpcbsrv\HPCHEM1\ECD_L\Data\PL121018\
 Data File : PL042915.D
 Signal(s) : Signal #1: ECD1A.ch Signal #2: ECD2B.ch
 Acq On : 10 Dec 2018 15:44
 Operator : AJ\SJ
 Sample : J6224-01
 Misc :
 ALS Vial : 19 Sample Multiplier: 1

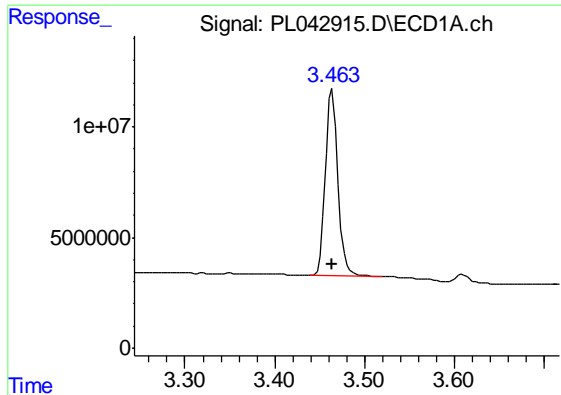
Instrument :
 ECD_L
 ClientSampled :
 S-1

Manual Integrations
APPROVED
 Sohil
 12/11/2018 10:18:26 AM

Integration File signal 1: autoint1.e
 Integration File signal 2: autoint2.e
 Quant Time: Dec 11 00:47:01 2018
 Quant Method : Z:\pestpcbsrv\HPCHEM1\ECD_L\methods\PL120618.M
 Quant Title : GC Extractables
 QLast Update : Fri Dec 07 00:20:08 2018
 Response via : Initial Calibration
 Integrator: ChemStation

Volume Inj. : 2 µl
 Signal #1 Phase : ZB-MR1 Signal #2 Phase: ZB-MR2
 Signal #1 Info : 30M x 0.32mm x0.5 Signal #2 Info : 30M x 0.32mm x0.25µm





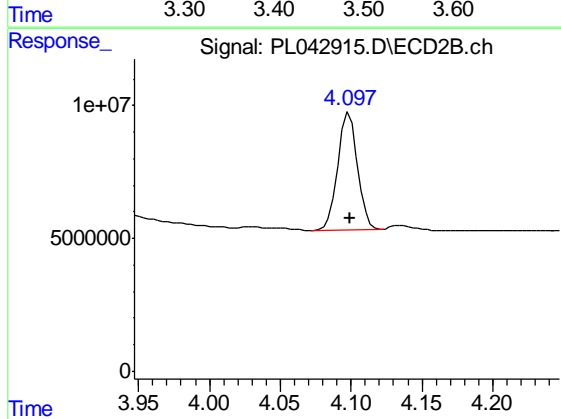
#1 Tetrachloro-m-xylene

R.T.: 3.464 min
 Delta R.T.: 0.000 min
 Response: 81936963
 Conc: 13.36 ng/ml

Instrument :
 ECD_L
 ClientSampled :
 S-1

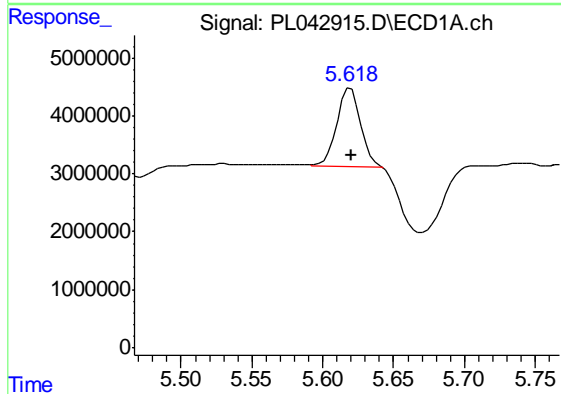
Manual Integrations
 APPROVED

Sohil
 12/11/2018 10:18:26 AM



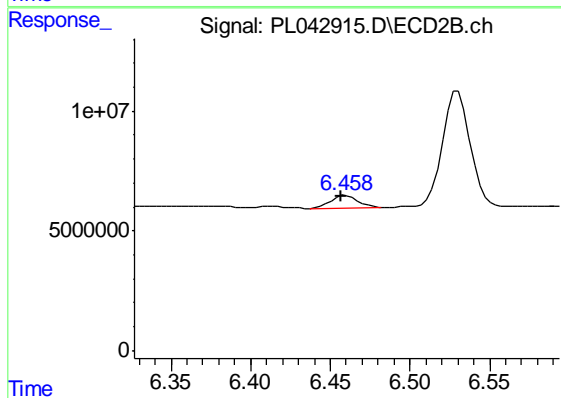
#1 Tetrachloro-m-xylene

R.T.: 4.099 min
 Delta R.T.: 0.000 min
 Response: 43008068
 Conc: 14.51 ng/ml



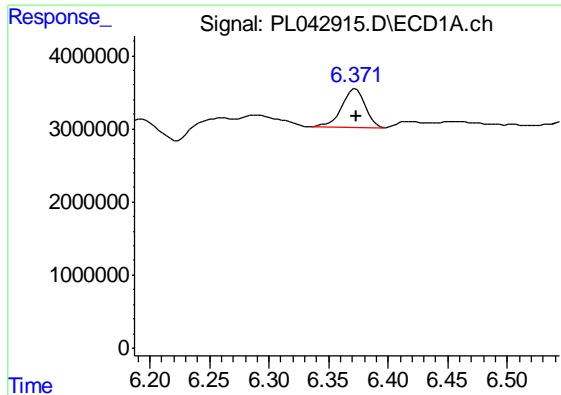
#12 4,4'-DDE

R.T.: 5.618 min
 Delta R.T.: -0.002 min
 Response: 15833891
 Conc: 2.29 ng/ml m



#12 4,4'-DDE

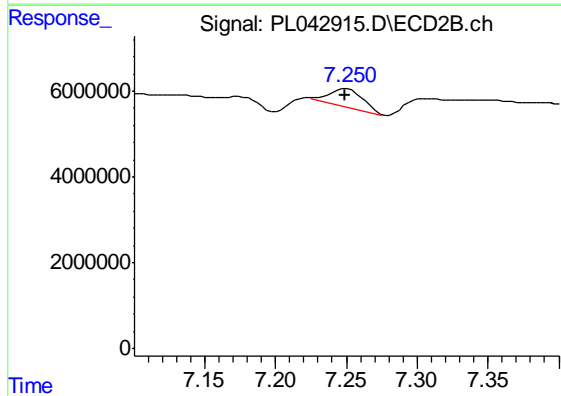
R.T.: 6.458 min
 Delta R.T.: 0.001 min
 Response: 6103518
 Conc: 1.68 ng/ml m



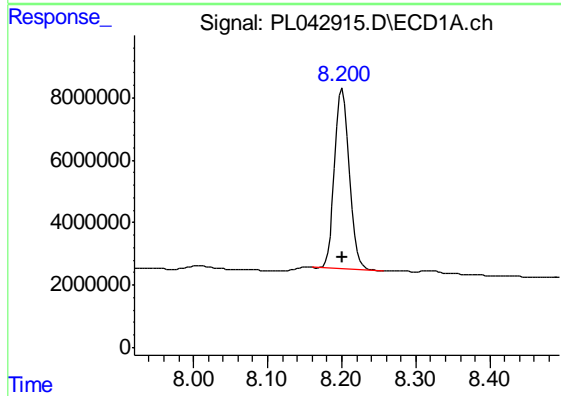
#17 4,4'-DDT
 R.T.: 6.371 min
 Delta R.T.: -0.003 min
 Response: 7222215
 Conc: 1.21 ng/ml m

Instrument :
 ECD_L
 ClientSampled :
 S-1

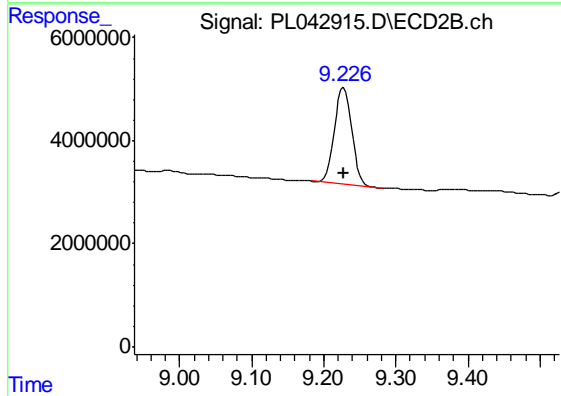
Manual Integrations
 APPROVED
 Sohil
 12/11/2018 10:18:26 AM



#17 4,4'-DDT
 R.T.: 7.250 min
 Delta R.T.: 0.001 min
 Response: 7134583
 Conc: 2.43 ng/ml m



#28 Decachlorobiphenyl
 R.T.: 8.201 min
 Delta R.T.: 0.000 min
 Response: 79459571
 Conc: 12.17 ng/ml



#28 Decachlorobiphenyl
 R.T.: 9.228 min
 Delta R.T.: 0.000 min
 Response: 31473102
 Conc: 12.07 ng/ml