

Data Path : Z:\pestpcbsrv\HPCHEM1\ECD\_L\Data\PL121021\  
 Data File : PL071380.D  
 Signal(s) : Signal #1: ECD1A.ch Signal #2: ECD2B.ch  
 Acq On : 10 Dec 2021 17:51  
 Operator : AR\AJ  
 Sample : M4966-06MSD  
 Misc :  
 ALS Vial : 11 Sample Multiplier: 1

Instrument :  
 ECD\_L  
 ClientSampleId :

Integration File signal 1: autoint1.e  
 Integration File signal 2: autoint2.e  
 Quant Time: Dec 10 22:27:49 2021  
 Quant Method : Z:\pestpcbsrv\HPCHEM1\ECD\_L\methods\PL113021.M  
 Quant Title : GC Extractables  
 QLast Update : Tue Nov 30 16:26:31 2021  
 Response via : Initial Calibration  
 Integrator: ChemStation

Volume Inj. : 1 µl  
 Signal #1 Phase : ZB-MR2 Signal #2 Phase: ZB-MR1  
 Signal #1 Info : 30M x 0.32mm x0.2 Signal #2 Info : 30M x 0.32mm x0.5µm

	Compound	RT#1	RT#2	Resp#1	Resp#2	ng/ml	ng/ml
-----							
System Monitoring Compounds							
1)	SA Tetrachlo...	4.562	5.500	9014285	26702614	19.192	21.278
28)	SA Decachlor...	10.326	11.393	12920412	23077040	17.844	16.602
Target Compounds							
2)	A alpha-BHC	5.269	6.080	31897228	79326285	48.792	42.847
3)	MA gamma-BHC...	5.692	6.476	31438543	83721266	49.230	47.563
4)	MA Heptachlor	6.099	7.123	32592325	84592131	47.012	46.121
5)	MB Aldrin	6.423	7.493	31786360	82574676	51.227	48.959
6)	B beta-BHC	6.076	6.734	12188023	37081924	40.260	42.134
7)	B delta-BHC	6.334	7.000	13945909	42961388	21.849	25.267
8)	B Heptachlo...	7.001	7.961	30576102	74077853	49.057	46.629
9)	A Endosulfan I	7.403	8.366	28270069	65702244	47.536	43.481
10)	B gamma-Chl...	7.278	8.231	30951632	72516772	48.746	45.354
11)	B alpha-Chl...	7.347	8.310	30938130	70875788	48.340	44.598
12)	B 4,4'-DDE	7.562	8.500	28161337	68942203	49.768	44.781
13)	MA Dieldrin	7.689	8.654	30231187	70122853	49.992	45.137
14)	MA Endrin	7.980	8.894	28894750	63322411	51.091	47.190
15)	B Endosulfa...	8.292	9.129	28238854	60992251	48.364	45.269
16)	A 4,4'-DDD	8.149	9.040	23357200	52050937	46.614	44.866
17)	MA 4,4'-DDT	8.409	9.357	25618669	54079953	46.834	38.880
18)	B Endrin al...	8.481	9.264	23792614	49461298	51.946	47.875
19)	B Endosulfa...	8.712	9.502	24874403	49199047	40.922	37.645
20)	A Methoxychlor	9.004	9.844	16420497	28805186	45.449	39.728
21)	B Endrin ke...	9.230	9.998	32000795	58192264	44.903	39.739
22)	Mirex	9.413	10.462	28761185	45733518	46.573	41.930
23)	Chlordane-1	5.865f	0.000	340957	0	20.278	N.D. #
24)	Chlordane-2	0.000	7.493f	0	82574676	N.D.	1441.884 #
25)	Chlordane-3	7.278	8.231	30951632	72516772	499.063	329.786 #
26)	Chlordane-4	7.347	8.310	30938130	70875788	466.456	267.115 #
27)	Chlordane-5	8.292	9.184	28238854	260192	1183.031	5.519 #

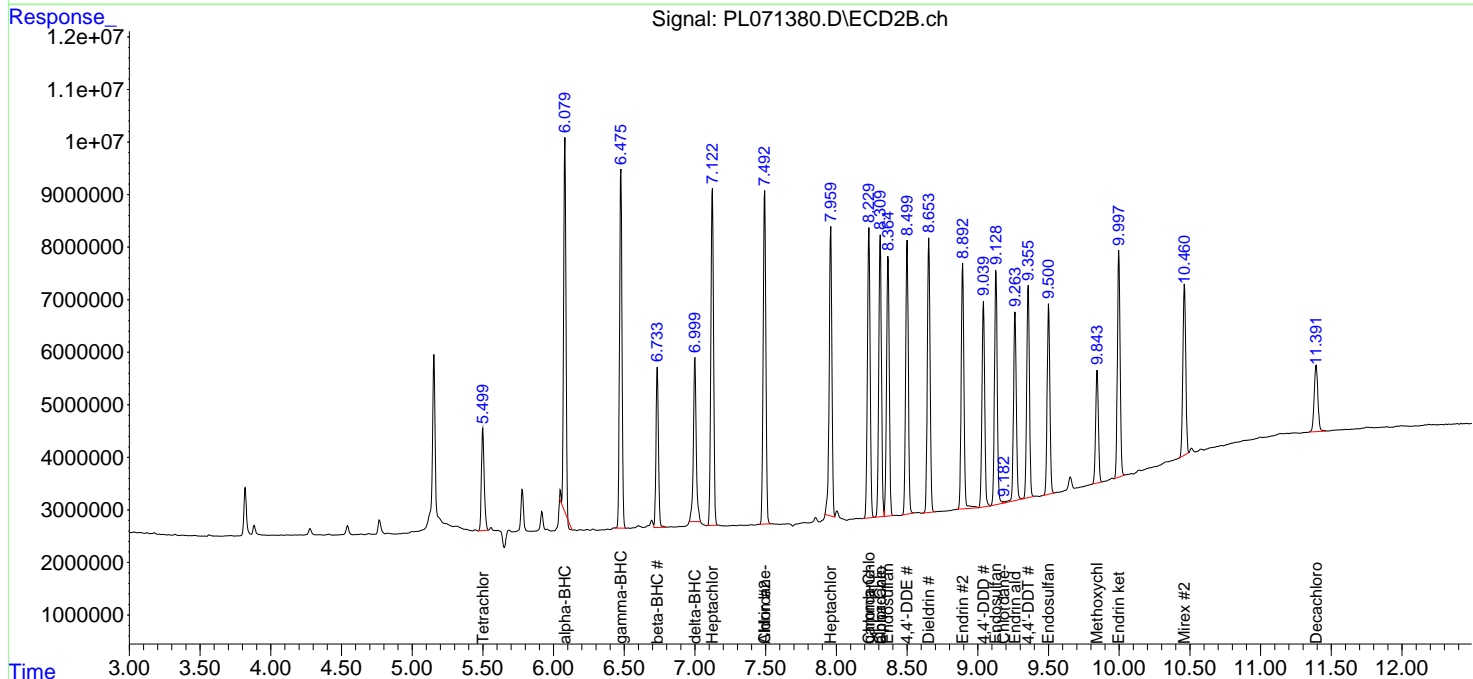
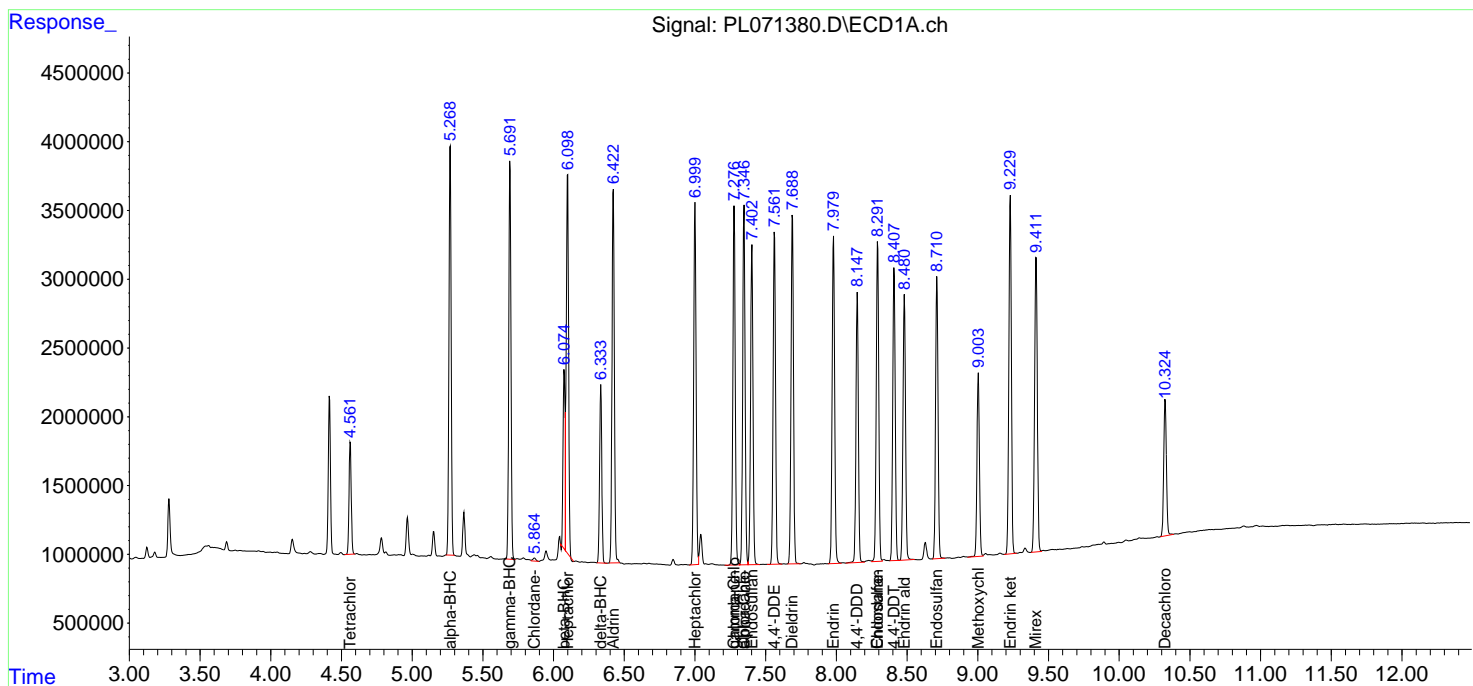
(f)=RT Delta > 1/2 Window (#)=Amounts differ by > 25% (m)=manual int.

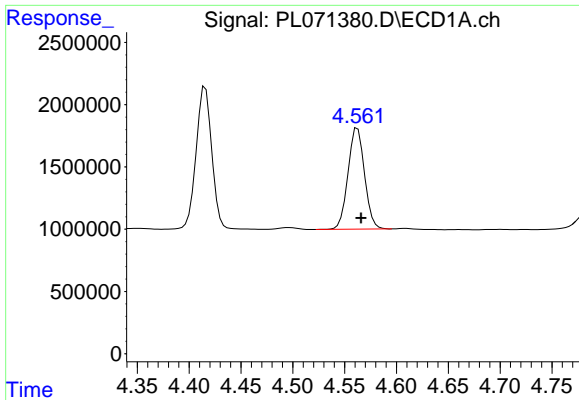
Data Path : Z:\pestpcbsrv\HPCHEM1\ECD\_L\Data\PL121021\  
 Data File : PL071380.D  
 Signal(s) : Signal #1: ECD1A.ch Signal #2: ECD2B.ch  
 Acq On : 10 Dec 2021 17:51  
 Operator : AR\AJ  
 Sample : M4966-06MSD  
 Misc :  
 ALS Vial : 11 Sample Multiplier: 1

Instrument :  
 ECD\_L  
 ClientSampleId :

Integration File signal 1: autoint1.e  
 Integration File signal 2: autoint2.e  
 Quant Time: Dec 10 22:27:49 2021  
 Quant Method : Z:\pestpcbsrv\HPCHEM1\ECD\_L\methods\PL113021.M  
 Quant Title : GC Extractables  
 QLast Update : Tue Nov 30 16:26:31 2021  
 Response via : Initial Calibration  
 Integrator: ChemStation

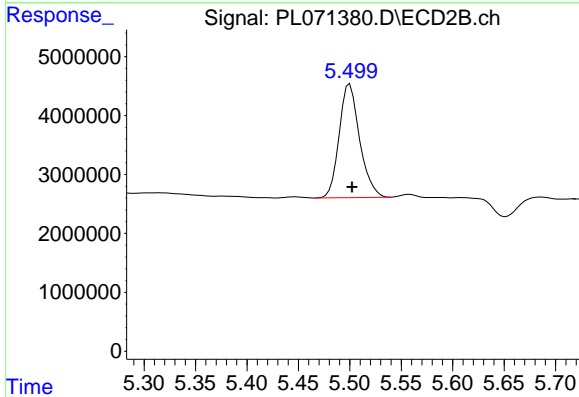
Volume Inj. : 1 µl  
 Signal #1 Phase : ZB-MR2 Signal #2 Phase: ZB-MR1  
 Signal #1 Info : 30M x 0.32mm x0.2 Signal #2 Info : 30M x 0.32mm x0.5µm



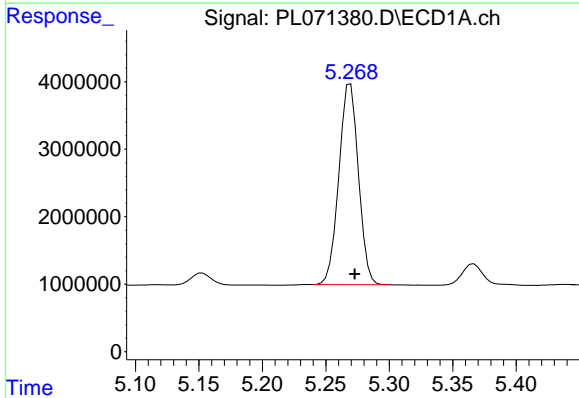


#1 Tetrachloro-m-xylene  
 R.T.: 4.562 min  
 Delta R.T.: -0.004 min  
 Response: 9014285  
 Conc: 19.19 ng/ml

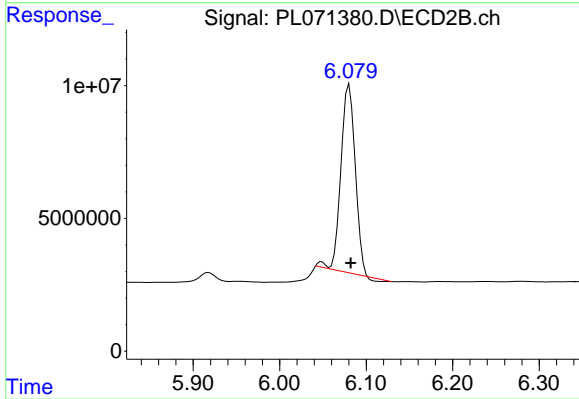
Instrument :  
 ECD\_L  
 ClientSampleId :



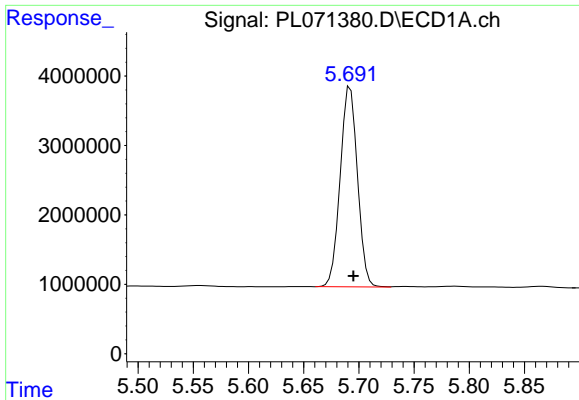
#1 Tetrachloro-m-xylene  
 R.T.: 5.500 min  
 Delta R.T.: -0.002 min  
 Response: 26702614  
 Conc: 21.28 ng/ml



#2 alpha-BHC  
 R.T.: 5.269 min  
 Delta R.T.: -0.003 min  
 Response: 31897228  
 Conc: 48.79 ng/ml

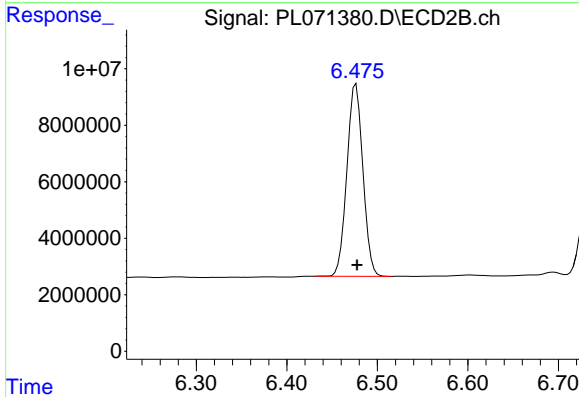


#2 alpha-BHC  
 R.T.: 6.080 min  
 Delta R.T.: -0.002 min  
 Response: 79326285  
 Conc: 42.85 ng/ml

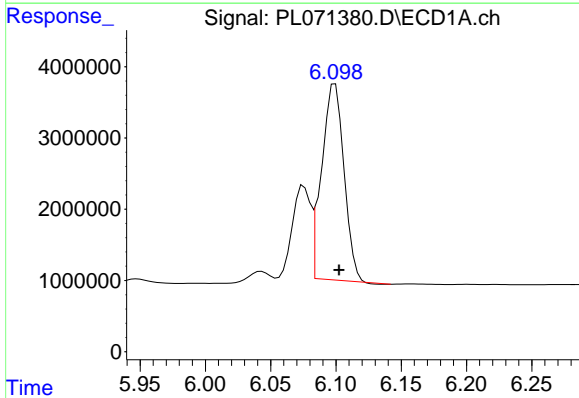


#3 gamma-BHC (Lindane)  
 R.T.: 5.692 min  
 Delta R.T.: -0.003 min  
 Response: 31438543  
 Conc: 49.23 ng/ml

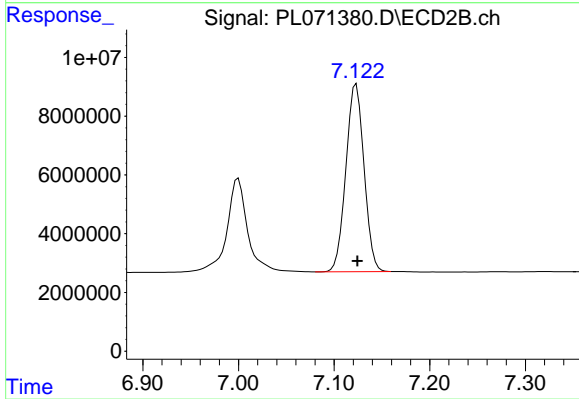
Instrument :  
 ECD\_L  
 ClientSampleId :



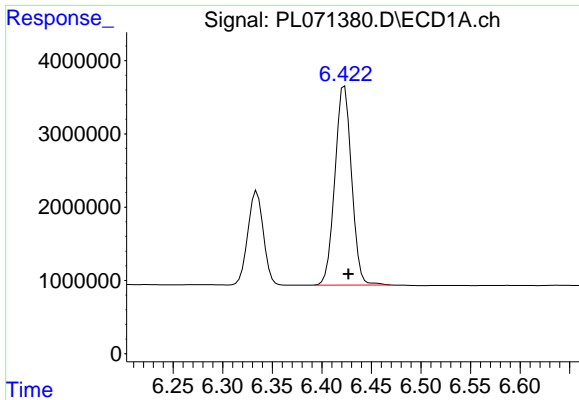
#3 gamma-BHC (Lindane)  
 R.T.: 6.476 min  
 Delta R.T.: -0.001 min  
 Response: 83721266  
 Conc: 47.56 ng/ml



#4 Heptachlor  
 R.T.: 6.099 min  
 Delta R.T.: -0.003 min  
 Response: 32592325  
 Conc: 47.01 ng/ml



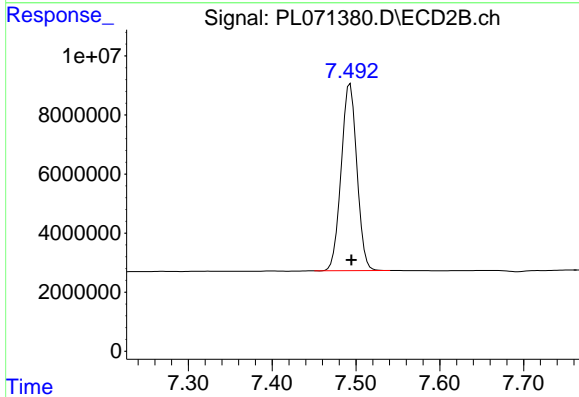
#4 Heptachlor  
 R.T.: 7.123 min  
 Delta R.T.: -0.001 min  
 Response: 84592131  
 Conc: 46.12 ng/ml



#5 Aldrin

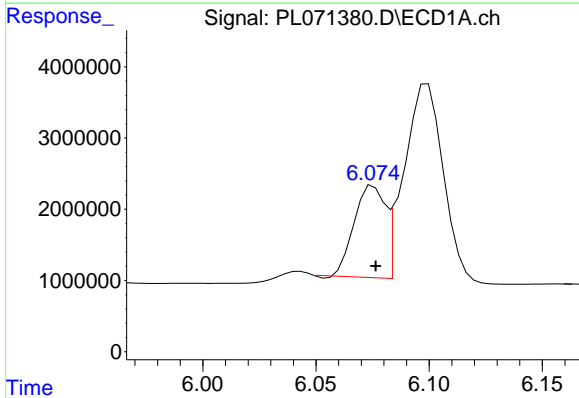
R.T.: 6.423 min  
Delta R.T.: -0.004 min  
Response: 31786360  
Conc: 51.23 ng/ml

Instrument :  
ECD\_L  
ClientSampleId :



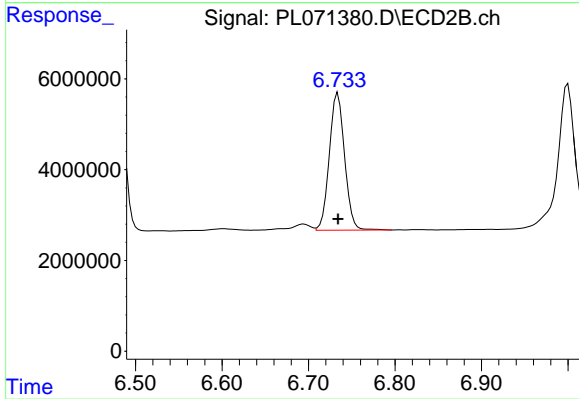
#5 Aldrin

R.T.: 7.493 min  
Delta R.T.: -0.001 min  
Response: 82574676  
Conc: 48.96 ng/ml



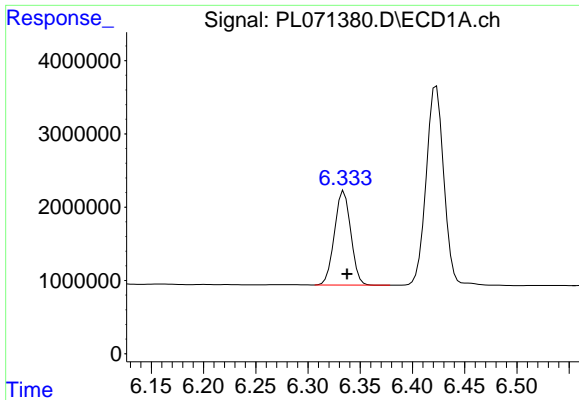
#6 beta-BHC

R.T.: 6.076 min  
Delta R.T.: 0.000 min  
Response: 12188023  
Conc: 40.26 ng/ml



#6 beta-BHC

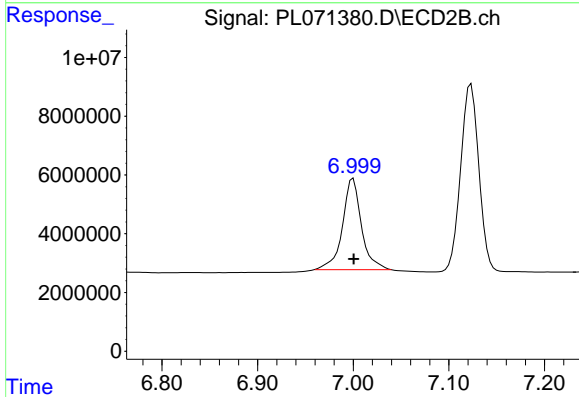
R.T.: 6.734 min  
Delta R.T.: 0.000 min  
Response: 37081924  
Conc: 42.13 ng/ml



#7 delta-BHC

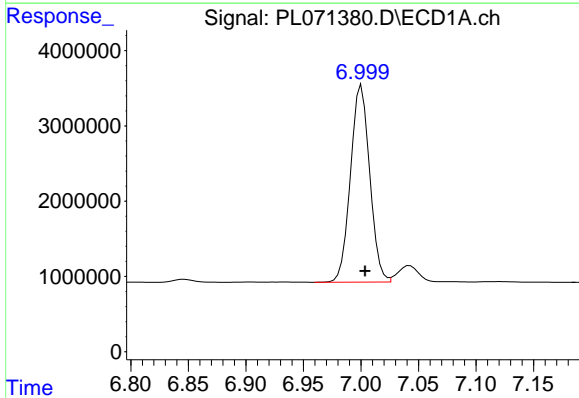
R.T.: 6.334 min  
 Delta R.T.: -0.003 min  
 Response: 13945909  
 Conc: 21.85 ng/ml

Instrument :  
 ECD\_L  
 ClientSampleId :



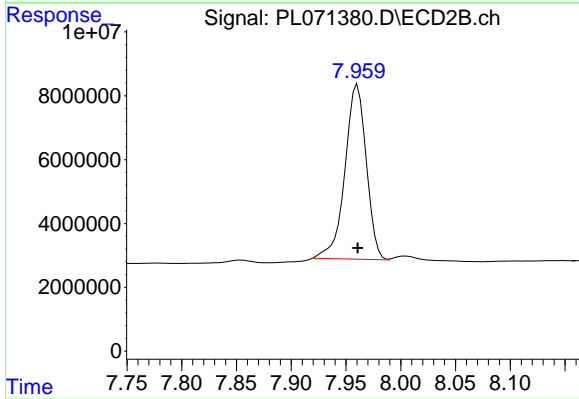
#7 delta-BHC

R.T.: 7.000 min  
 Delta R.T.: 0.000 min  
 Response: 42961388  
 Conc: 25.27 ng/ml



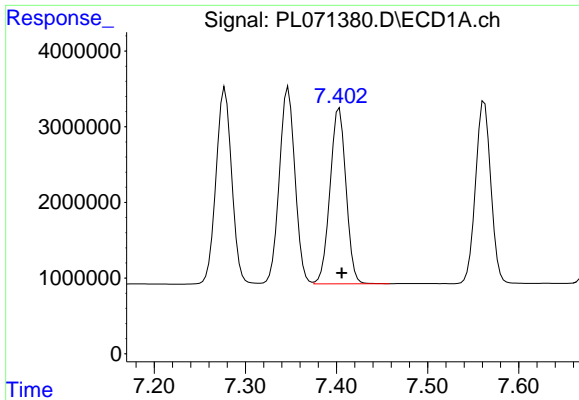
#8 Heptachlor epoxide

R.T.: 7.001 min  
 Delta R.T.: -0.003 min  
 Response: 30576102  
 Conc: 49.06 ng/ml



#8 Heptachlor epoxide

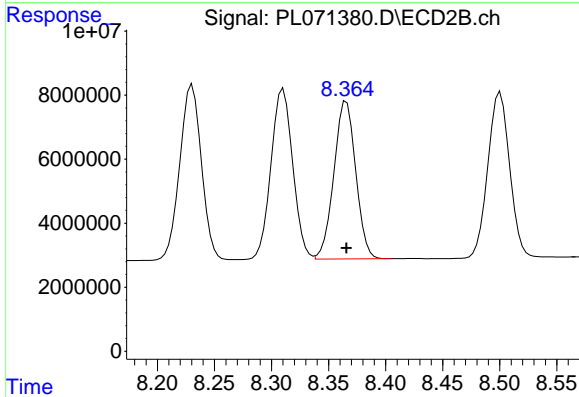
R.T.: 7.961 min  
 Delta R.T.: 0.000 min  
 Response: 74077853  
 Conc: 46.63 ng/ml



#9 Endosulfan I

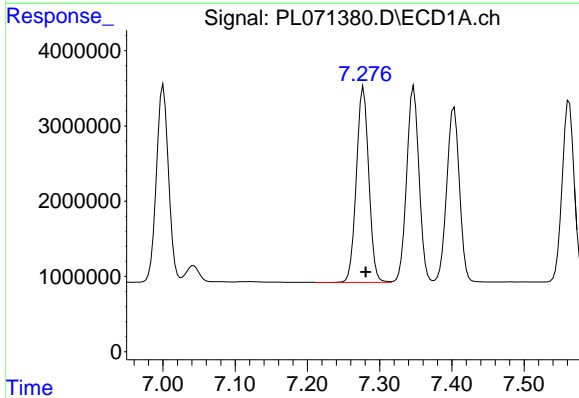
R.T.: 7.403 min  
 Delta R.T.: -0.003 min  
 Response: 28270069  
 Conc: 47.54 ng/ml

Instrument :  
 ECD\_L  
 ClientSampleId :



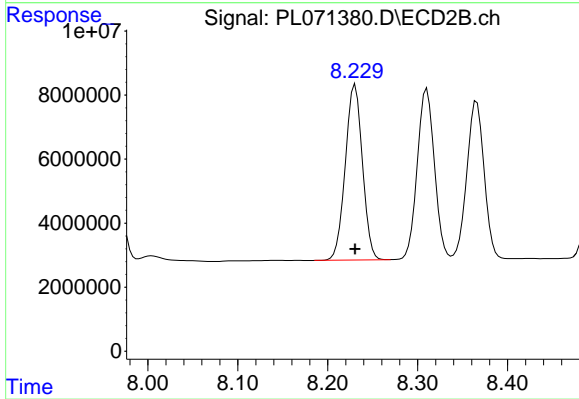
#9 Endosulfan I

R.T.: 8.366 min  
 Delta R.T.: 0.000 min  
 Response: 65702244  
 Conc: 43.48 ng/ml



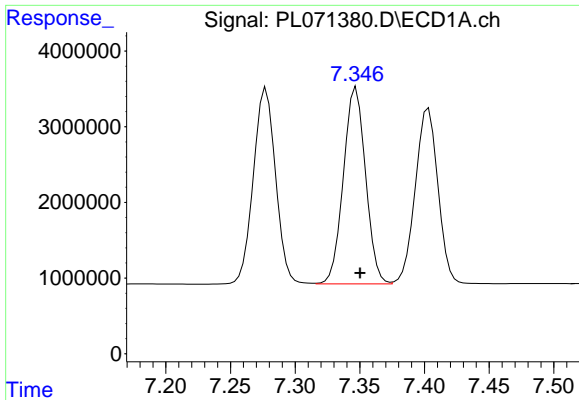
#10 gamma-Chlordane

R.T.: 7.278 min  
 Delta R.T.: -0.003 min  
 Response: 30951632  
 Conc: 48.75 ng/ml



#10 gamma-Chlordane

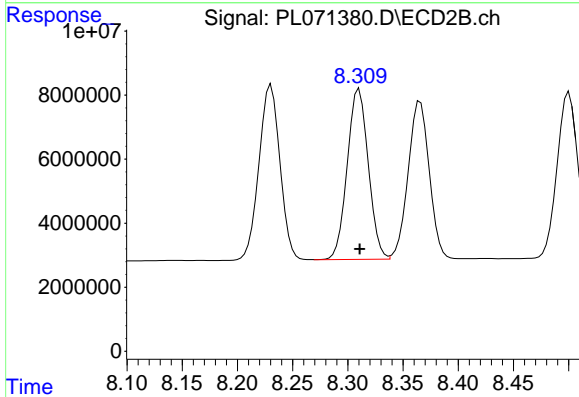
R.T.: 8.231 min  
 Delta R.T.: 0.000 min  
 Response: 72516772  
 Conc: 45.35 ng/ml



#11 alpha-Chlordane

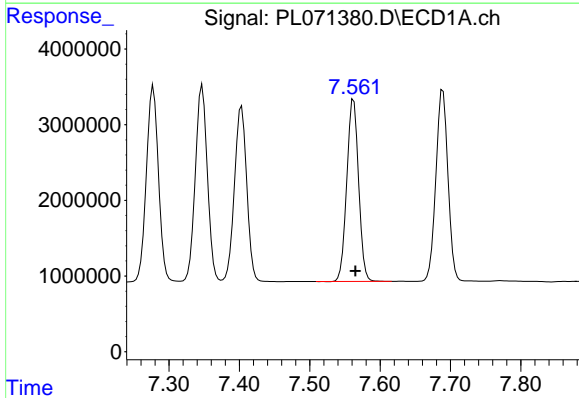
R.T.: 7.347 min  
 Delta R.T.: -0.003 min  
 Response: 30938130  
 Conc: 48.34 ng/ml

Instrument :  
 ECD\_L  
 ClientSampleId :



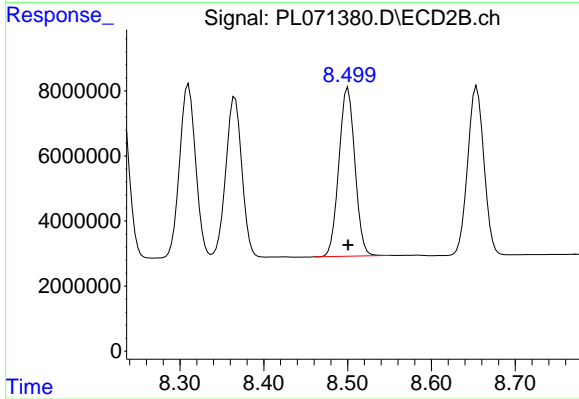
#11 alpha-Chlordane

R.T.: 8.310 min  
 Delta R.T.: 0.000 min  
 Response: 70875788  
 Conc: 44.60 ng/ml



#12 4,4'-DDE

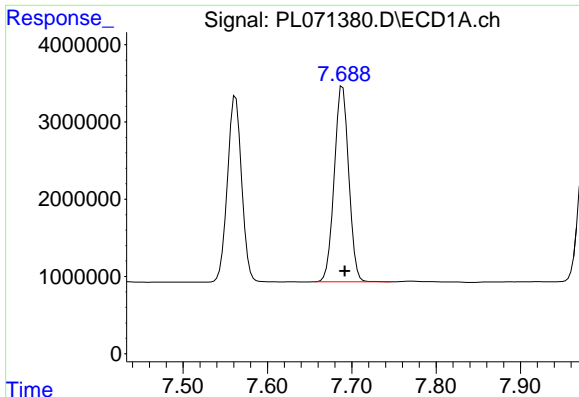
R.T.: 7.562 min  
 Delta R.T.: -0.003 min  
 Response: 28161337  
 Conc: 49.77 ng/ml



#12 4,4'-DDE

R.T.: 8.500 min  
 Delta R.T.: 0.000 min  
 Response: 68942203  
 Conc: 44.78 ng/ml

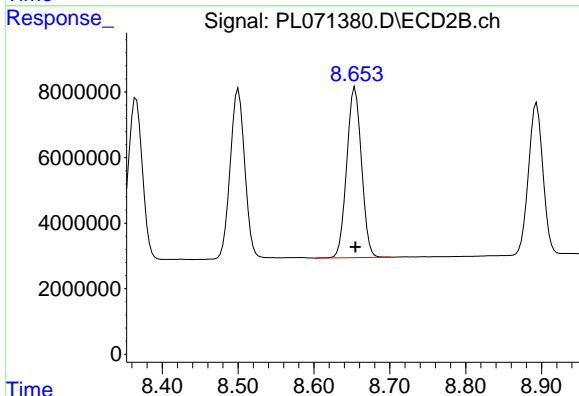




#13 Dieldrin

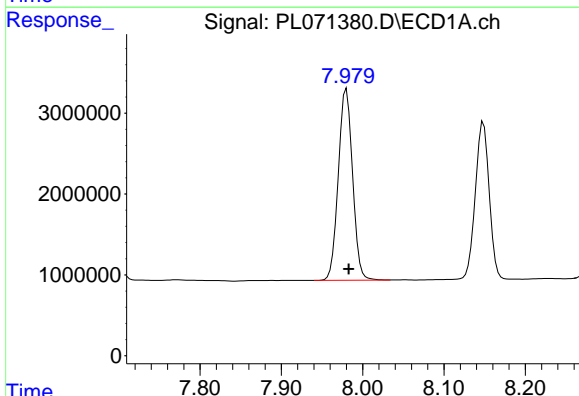
R.T.: 7.689 min  
 Delta R.T.: -0.002 min  
 Response: 30231187  
 Conc: 49.99 ng/ml

Instrument :  
 ECD\_L  
 ClientSampleId :



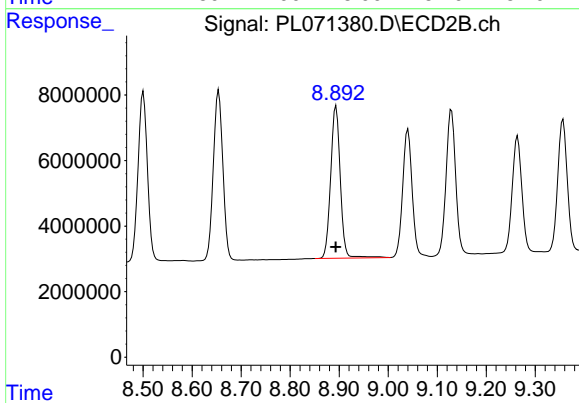
#13 Dieldrin

R.T.: 8.654 min  
 Delta R.T.: 0.000 min  
 Response: 70122853  
 Conc: 45.14 ng/ml



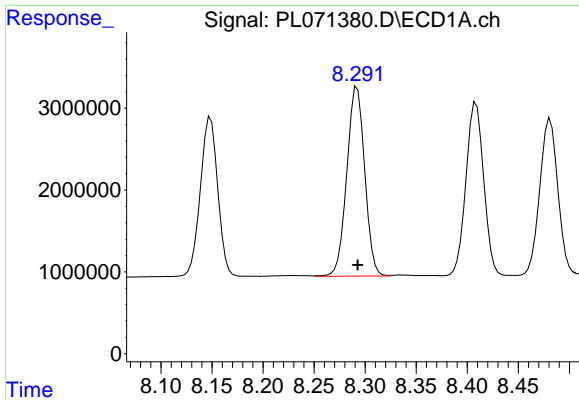
#14 Endrin

R.T.: 7.980 min  
 Delta R.T.: -0.003 min  
 Response: 28894750  
 Conc: 51.09 ng/ml



#14 Endrin

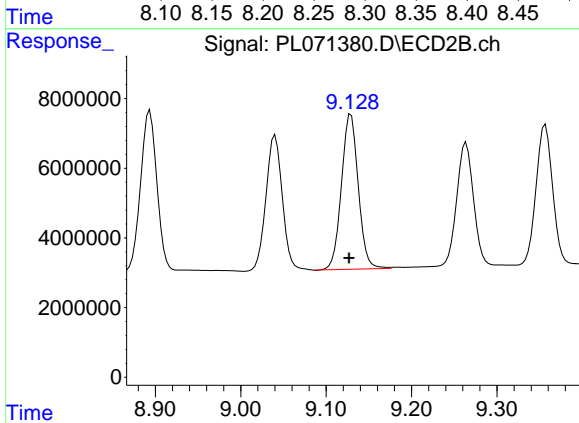
R.T.: 8.894 min  
 Delta R.T.: 0.000 min  
 Response: 63322411  
 Conc: 47.19 ng/ml



#15 Endosulfan II

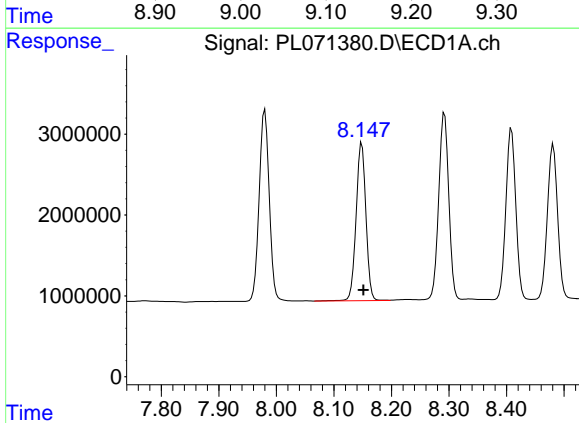
R.T.: 8.292 min  
 Delta R.T.: 0.000 min  
 Response: 28238854  
 Conc: 48.36 ng/ml

Instrument :  
 ECD\_L  
 ClientSampleId :



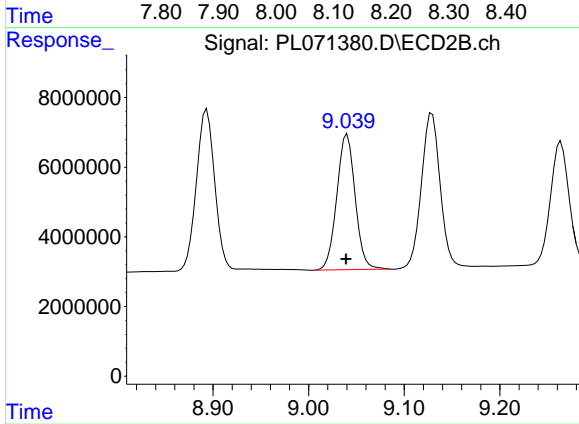
#15 Endosulfan II

R.T.: 9.129 min  
 Delta R.T.: 0.002 min  
 Response: 60992251  
 Conc: 45.27 ng/ml



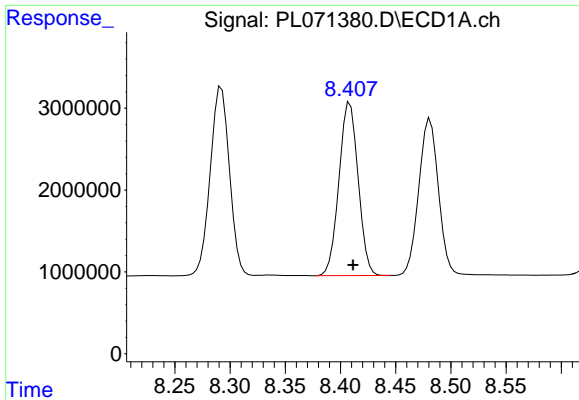
#16 4,4'-DDD

R.T.: 8.149 min  
 Delta R.T.: -0.002 min  
 Response: 23357200  
 Conc: 46.61 ng/ml



#16 4,4'-DDD

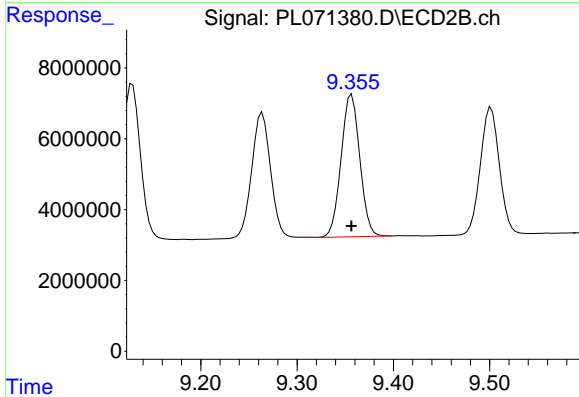
R.T.: 9.040 min  
 Delta R.T.: 0.001 min  
 Response: 52050937  
 Conc: 44.87 ng/ml



#17 4,4'-DDT

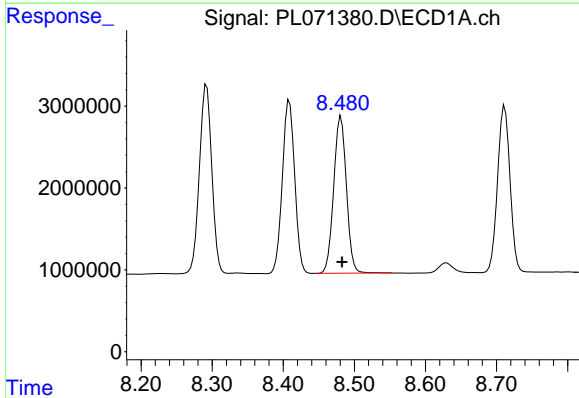
R.T.: 8.409 min  
 Delta R.T.: -0.003 min  
 Response: 25618669  
 Conc: 46.83 ng/ml

Instrument :  
 ECD\_L  
 ClientSampleId :



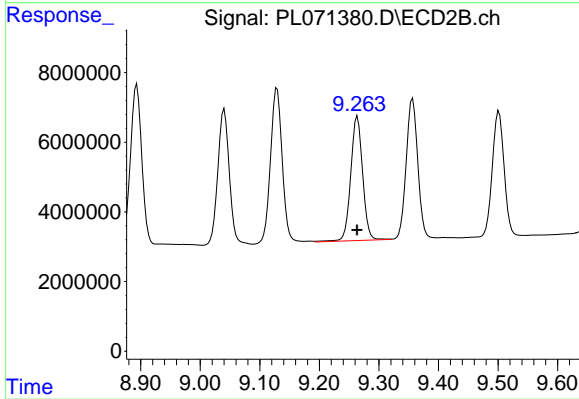
#17 4,4'-DDT

R.T.: 9.357 min  
 Delta R.T.: 0.000 min  
 Response: 54079953  
 Conc: 38.88 ng/ml



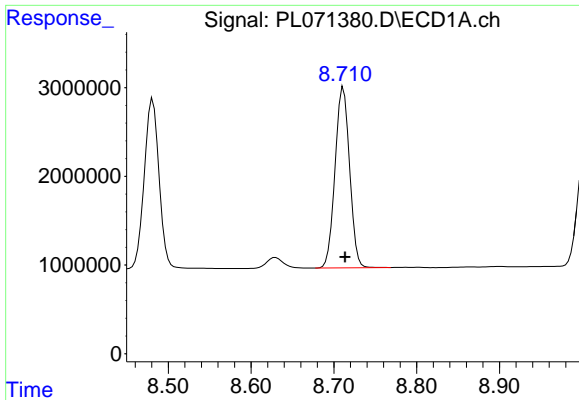
#18 Endrin aldehyde

R.T.: 8.481 min  
 Delta R.T.: -0.002 min  
 Response: 23792614  
 Conc: 51.95 ng/ml



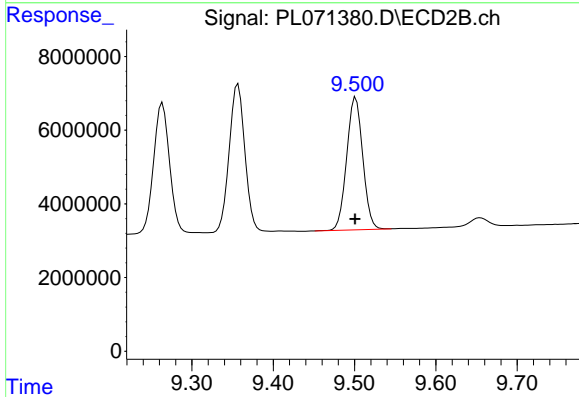
#18 Endrin aldehyde

R.T.: 9.264 min  
 Delta R.T.: 0.000 min  
 Response: 49461298  
 Conc: 47.87 ng/ml

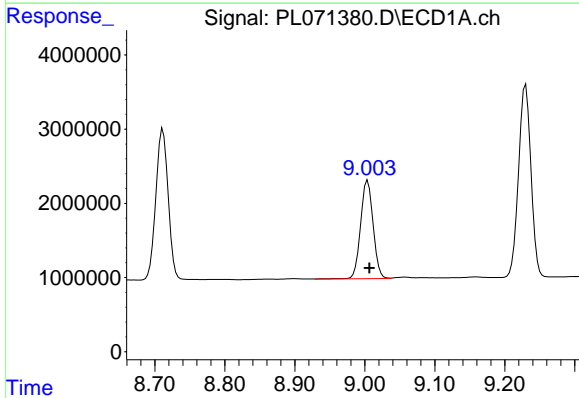


#19 Endosulfan Sulfate  
 R.T.: 8.712 min  
 Delta R.T.: -0.002 min  
 Response: 24874403  
 Conc: 40.92 ng/ml

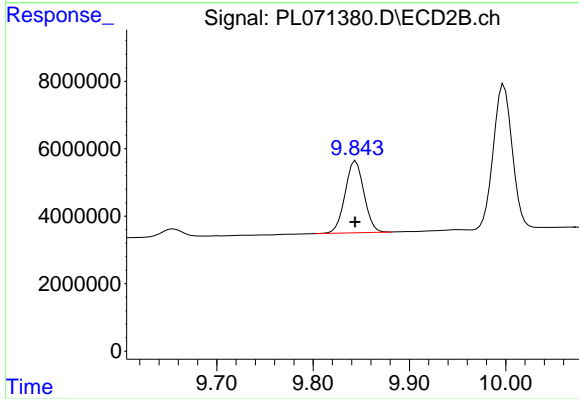
Instrument :  
 ECD\_L  
 ClientSampleId :



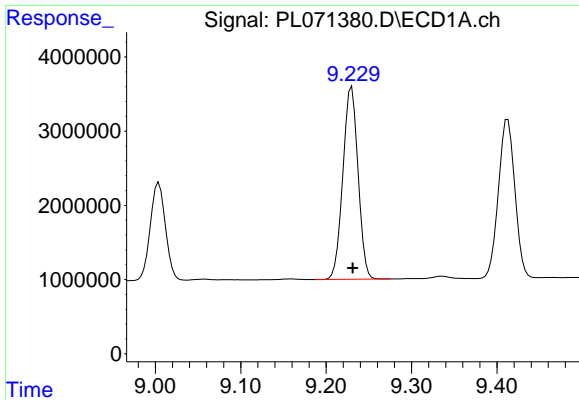
#19 Endosulfan Sulfate  
 R.T.: 9.502 min  
 Delta R.T.: 0.001 min  
 Response: 49199047  
 Conc: 37.64 ng/ml



#20 Methoxychlor  
 R.T.: 9.004 min  
 Delta R.T.: -0.003 min  
 Response: 16420497  
 Conc: 45.45 ng/ml



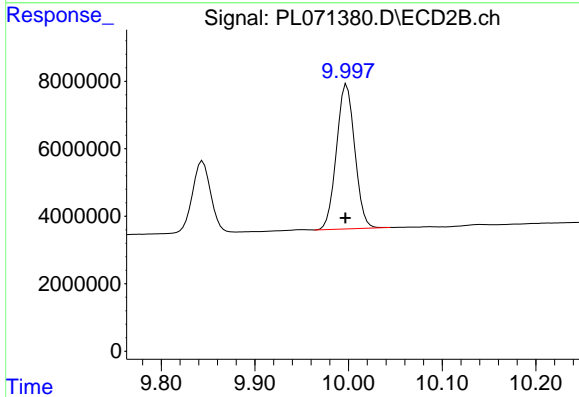
#20 Methoxychlor  
 R.T.: 9.844 min  
 Delta R.T.: 0.000 min  
 Response: 28805186  
 Conc: 39.73 ng/ml



#21 Endrin ketone

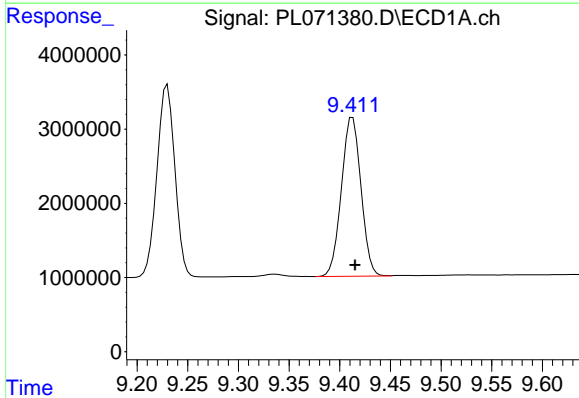
R.T.: 9.230 min  
 Delta R.T.: -0.001 min  
 Response: 32000795  
 Conc: 44.90 ng/ml

Instrument :  
 ECD\_L  
 ClientSampleId :



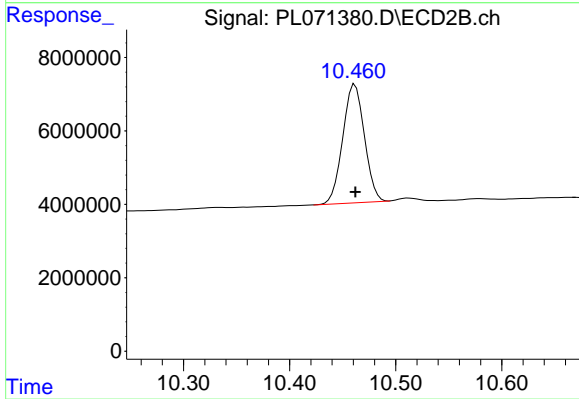
#21 Endrin ketone

R.T.: 9.998 min  
 Delta R.T.: 0.001 min  
 Response: 58192264  
 Conc: 39.74 ng/ml



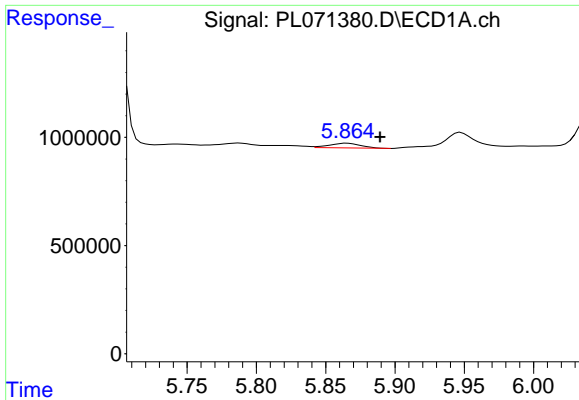
#22 Mirex

R.T.: 9.413 min  
 Delta R.T.: -0.002 min  
 Response: 28761185  
 Conc: 46.57 ng/ml



#22 Mirex

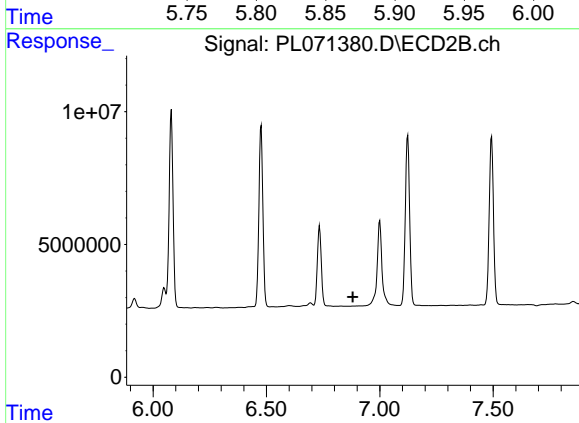
R.T.: 10.462 min  
 Delta R.T.: 0.000 min  
 Response: 45733518  
 Conc: 41.93 ng/ml



#23 Chlordane-1

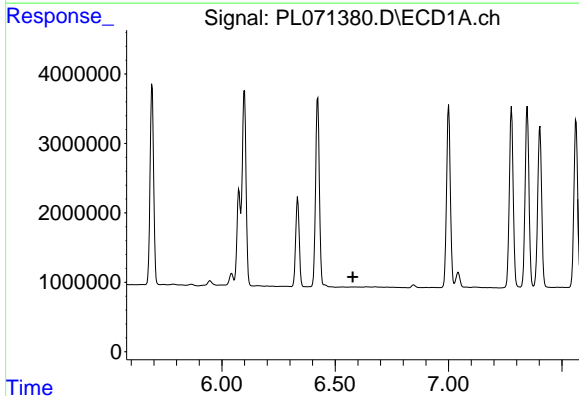
R.T.: 5.865 min  
 Delta R.T.: -0.024 min  
 Response: 340957  
 Conc: 20.28 ng/ml

Instrument :  
 ECD\_L  
 ClientSampleId :



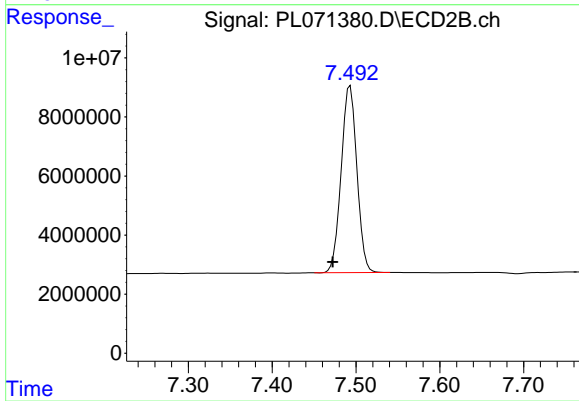
#23 Chlordane-1

R.T.: 0.000 min  
 Exp R.T. : 6.880 min  
 Response: 0  
 Conc: N.D.



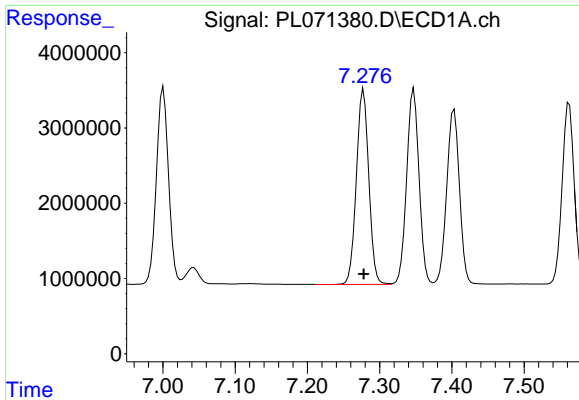
#24 Chlordane-2

R.T.: 0.000 min  
 Exp R.T. : 6.578 min  
 Response: 0  
 Conc: N.D.



#24 Chlordane-2

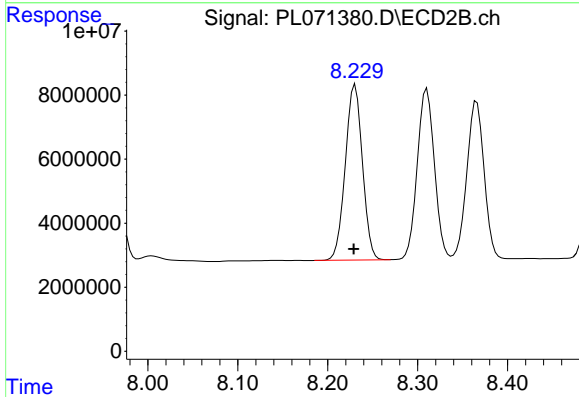
R.T.: 7.493 min  
 Delta R.T.: 0.021 min  
 Response: 82574676  
 Conc: 1441.88 ng/ml



#25 Chlordane-3

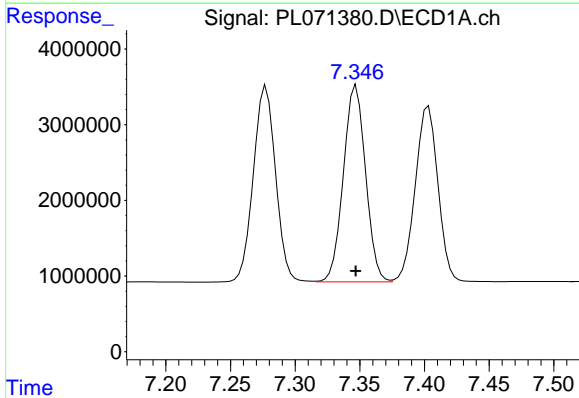
R.T.: 7.278 min  
 Delta R.T.: 0.000 min  
 Response: 30951632  
 Conc: 499.06 ng/ml

Instrument :  
 ECD\_L  
 ClientSampleId :



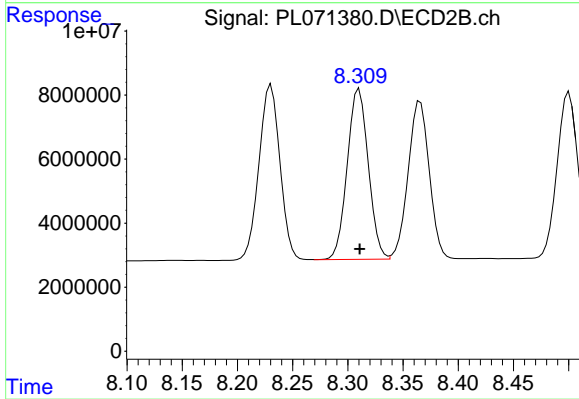
#25 Chlordane-3

R.T.: 8.231 min  
 Delta R.T.: 0.001 min  
 Response: 72516772  
 Conc: 329.79 ng/ml



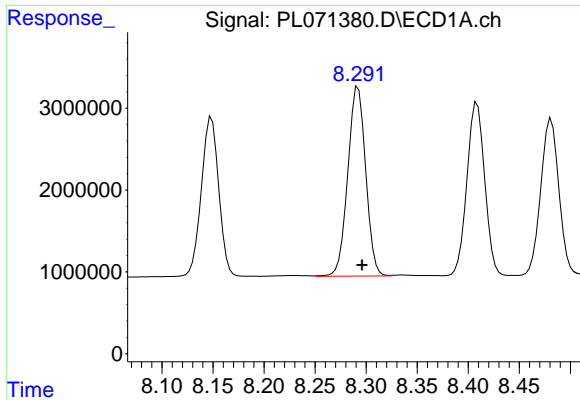
#26 Chlordane-4

R.T.: 7.347 min  
 Delta R.T.: 0.000 min  
 Response: 30938130  
 Conc: 466.46 ng/ml



#26 Chlordane-4

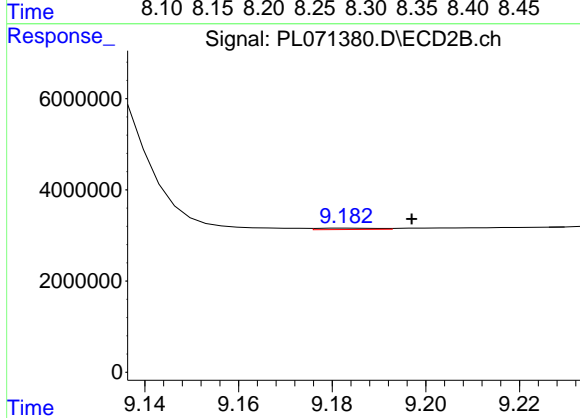
R.T.: 8.310 min  
 Delta R.T.: 0.000 min  
 Response: 70875788  
 Conc: 267.11 ng/ml



#27 Chlordane-5

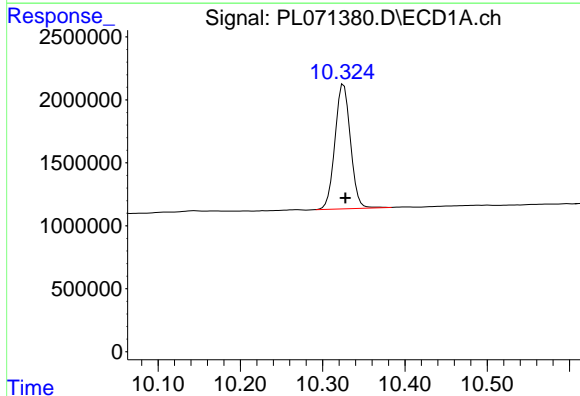
R.T.: 8.292 min  
 Delta R.T.: -0.004 min  
 Response: 28238854  
 Conc: 1183.03 ng/ml

Instrument :  
 ECD\_L  
 ClientSampleId :



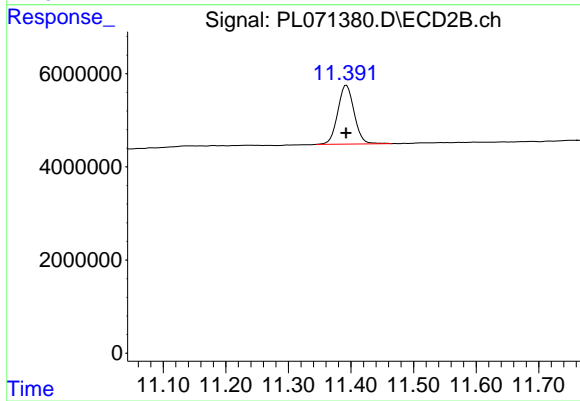
#27 Chlordane-5

R.T.: 9.184 min  
 Delta R.T.: -0.013 min  
 Response: 260192  
 Conc: 5.52 ng/ml



#28 Decachlorobiphenyl

R.T.: 10.326 min  
 Delta R.T.: -0.002 min  
 Response: 12920412  
 Conc: 17.84 ng/ml



#28 Decachlorobiphenyl

R.T.: 11.393 min  
 Delta R.T.: 0.000 min  
 Response: 23077040  
 Conc: 16.60 ng/ml