

Data Path : Z:\pestpcbsrv\HPCHEM1\ECD\_L\Data\PL121119\  
 Data File : PL054950.D  
 Signal(s) : Signal #1: ECD1A.ch Signal #2: ECD2B.ch  
 Acq On : 11 Dec 2019 19:01  
 Operator : SG\AJ  
 Sample : K6218-04MS  
 Misc : 6083 METHOD  
 ALS Vial : 24 Sample Multiplier: 1

Instrument :  
 ECD\_L  
 ClientSampled :  
 TI-604MS

Integration File signal 1: autoint1.e  
 Integration File signal 2: autoint2.e  
 Quant Time: Dec 12 04:02:19 2019  
 Quant Method : Z:\pestpcbsrv\HPCHEM1\ECD\_L\methods\PL112619.M  
 Quant Title : GC Extractables  
 QLast Update : Wed Nov 27 01:19:55 2019  
 Response via : Initial Calibration  
 Integrator: ChemStation

Volume Inj. : 1 µl  
 Signal #1 Phase : ZB-MR2 Signal #2 Phase: ZB-MR1  
 Signal #1 Info : 30M x 0.32mm x0.2 Signal #2 Info : 30M x 0.32mm x0.5µm

Compound	RT#1	RT#2	Resp#1	Resp#2	ng/ml	ng/ml
-----						
System Monitoring Compounds						
1) SA Tetrachlo...	3.535	4.049	131.1E6	19000828	11.271	7.446 #
28) SA Decachlor...	8.314	9.147	52731872	21254714	5.507	8.866 #
Target Compounds						
2) A alpha-BHC	3.981	4.438	47859011	72634951	2.521	20.502 #
3) MA gamma-BHC...	4.267	4.726	78480757	-8186800	4.604	N.D. #
4) MA Heptachlor	4.572	5.234	90603002	34477393	5.138	11.424 #
5) MB Aldrin	4.821	5.541	49702173	16954762	3.049	6.085 #
6) B beta-BHC	4.518	4.897	82480223	4582913	11.121	3.254 #
7) B delta-BHC	4.724	0.000	21490901	0	1.322	N.D. #
8) B Heptachlo...	5.267	5.959f	139.7E6	140.0E6	9.232	56.042 #
9) A Endosulfan I	5.609	6.265f	78532312	41623614	5.759	16.828 #
10) B gamma-Chl...	5.499	6.159	105.6E6	22935838	6.962	8.706 #
11) B alpha-Chl...	5.542f	6.233	564.7E6	19514907	38.293	7.432 #
12) B 4,4'-DDE	5.717	6.390	58771087	12073590	4.417	4.877
13) MA Dieldrin	5.853	6.539	29466805	24686908	2.078	9.699 #
14) MA Endrin	6.112	6.760	70826408	8953001	5.562	4.041 #
15) B Endosulfa...	6.387	6.972	67973917	16304096	5.618	6.935
16) A 4,4'-DDD	6.231	6.883	69629844	12355763	7.129	6.435
17) MA 4,4'-DDT	6.478	7.182	42665514	1912543	4.073	0.965 #
18) B Endrin al...	6.555	7.093	62135293	16060577	6.274	8.193 #
19) B Endosulfa...	6.765	7.317	38097146	4732853	3.558	2.232 #
20) A Methoxychlor	7.022	7.641	30807589	7152553	6.147	6.270
21) B Endrin ke...	7.258	7.791	48528075	15666075	4.465	6.960 #
22) Mirex	7.453	8.283f	34457648	15911452	4.244	9.206 #
23) Chlordane-1	4.423	5.041	96395576	5574642	244.265	69.933 #
24) Chlordane-2	4.935	5.512	24873915	14040701	57.279	156.662 #
25) Chlordane-3	5.499	6.159	105.6E6	22935838	82.212	73.891
26) Chlordane-4	5.542	6.233	564.7E6	19514907	534.569	51.861 #
27) Chlordane-5	6.387	7.036	67973917	22289461	180.541	330.618 #

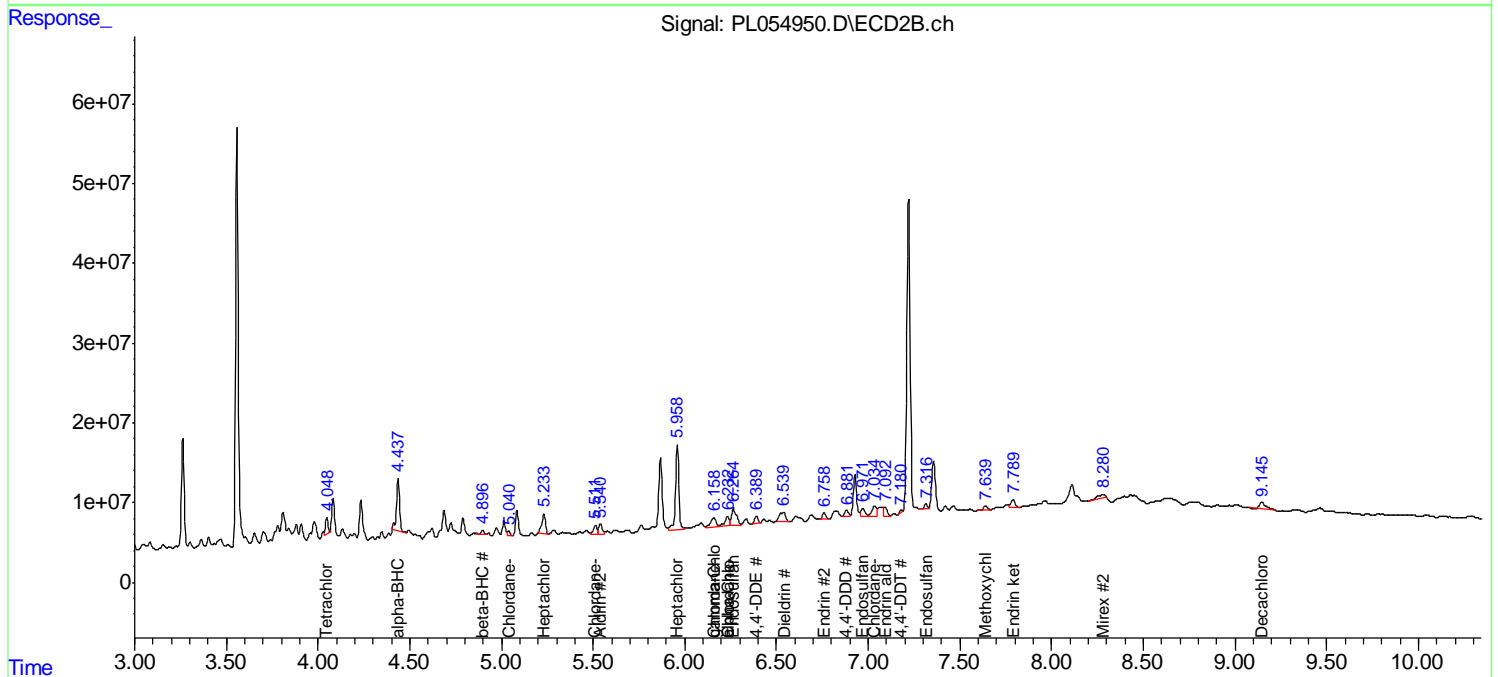
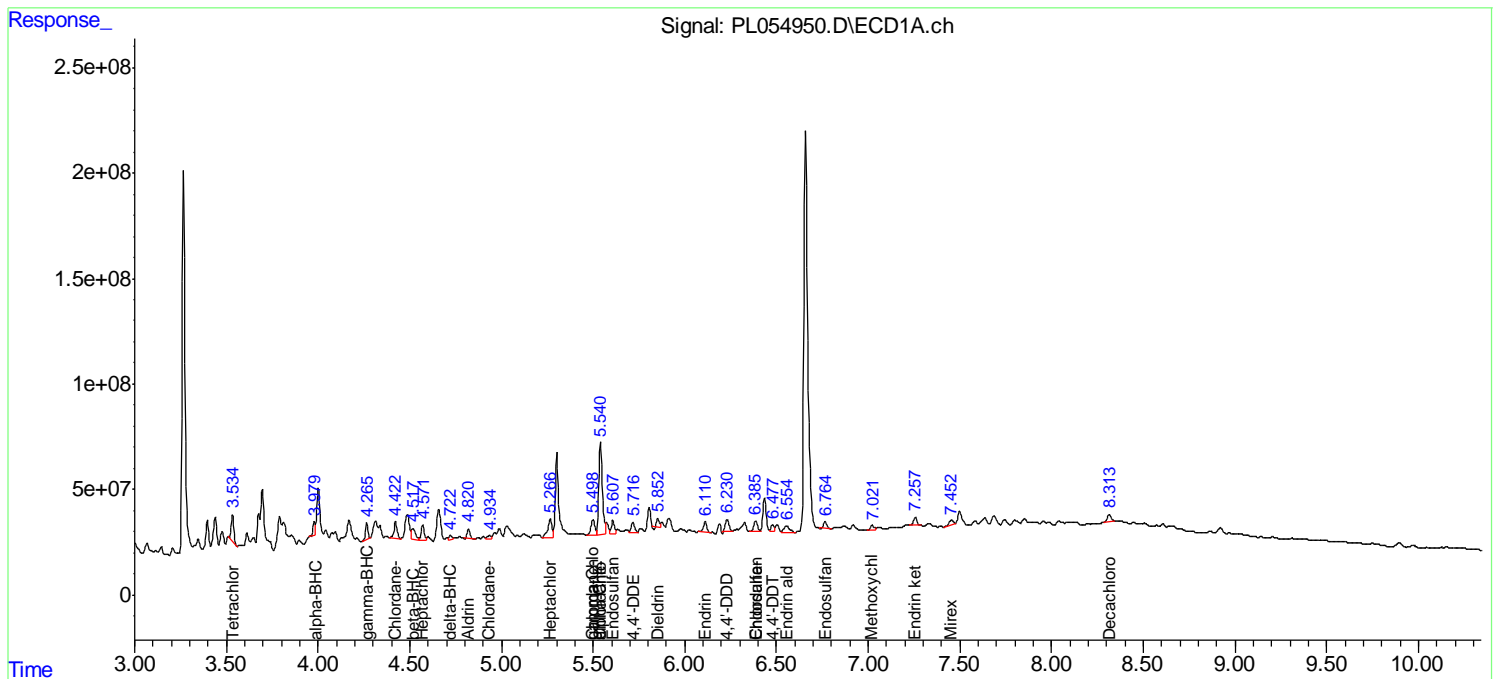
(f)=RT Delta > 1/2 Window (#)=Amounts differ by > 25% (m)=manual int.

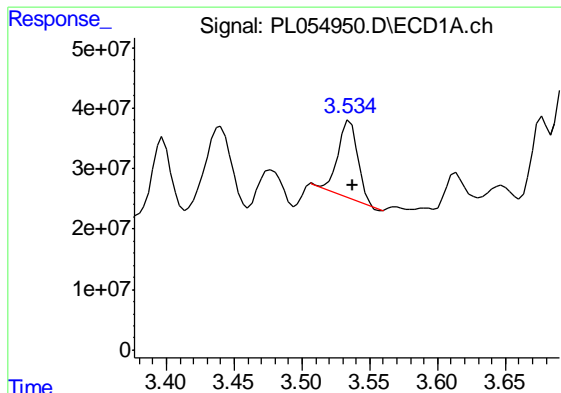
Data Path : Z:\pestpcbsrv\HPCHEM1\ECD\_L\Data\PL121119\  
 Data File : PL054950.D  
 Signal(s) : Signal #1: ECD1A.ch Signal #2: ECD2B.ch  
 Acq On : 11 Dec 2019 19:01  
 Operator : SG\AJ  
 Sample : K6218-04MS  
 Misc : 6083 METHOD  
 ALS Vial : 24 Sample Multiplier: 1

Instrument :  
 ECD\_L  
 ClientSampled :  
 TI-604MS

Integration File signal 1: autoint1.e  
 Integration File signal 2: autoint2.e  
 Quant Time: Dec 12 04:02:19 2019  
 Quant Method : Z:\pestpcbsrv\HPCHEM1\ECD\_L\methods\PL112619.M  
 Quant Title : GC Extractables  
 QLast Update : Wed Nov 27 01:19:55 2019  
 Response via : Initial Calibration  
 Integrator: ChemStation

Volume Inj. : 1 µl  
 Signal #1 Phase : ZB-MR2 Signal #2 Phase: ZB-MR1  
 Signal #1 Info : 30M x 0.32mm x0.2 Signal #2 Info : 30M x 0.32mm x0.5µm

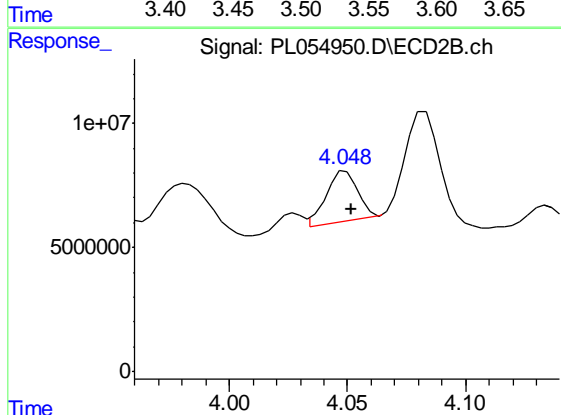




#1 Tetrachloro-m-xylene

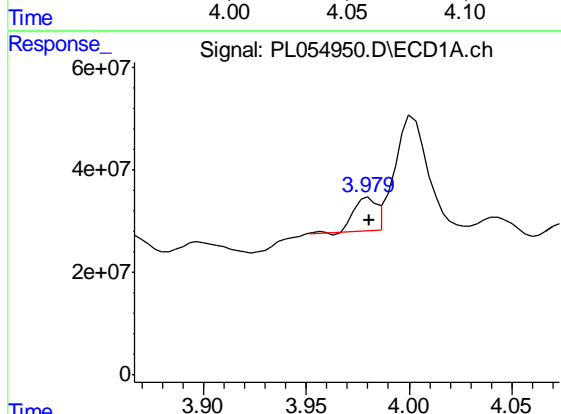
R.T.: 3.535 min  
 Delta R.T.: -0.002 min  
 Response: 131122881  
 Conc: 11.27 ng/ml

Instrument :  
 ECD\_L  
 ClientSampleId :  
 TI-604MS



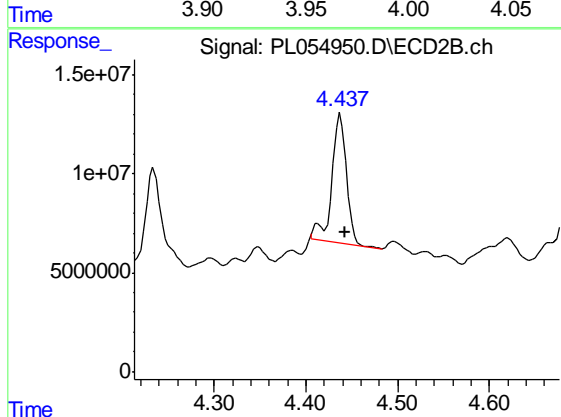
#1 Tetrachloro-m-xylene

R.T.: 4.049 min  
 Delta R.T.: -0.002 min  
 Response: 19000828  
 Conc: 7.45 ng/ml



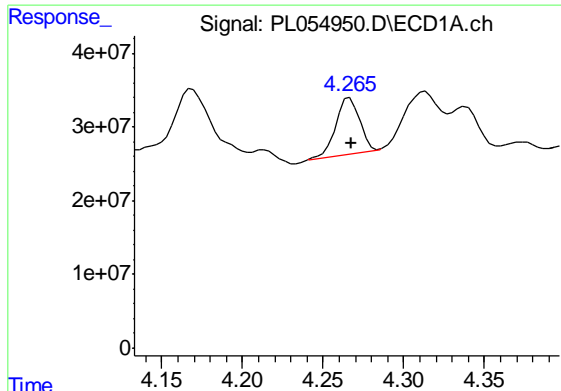
#2 alpha-BHC

R.T.: 3.981 min  
 Delta R.T.: 0.000 min  
 Response: 47859011  
 Conc: 2.52 ng/ml



#2 alpha-BHC

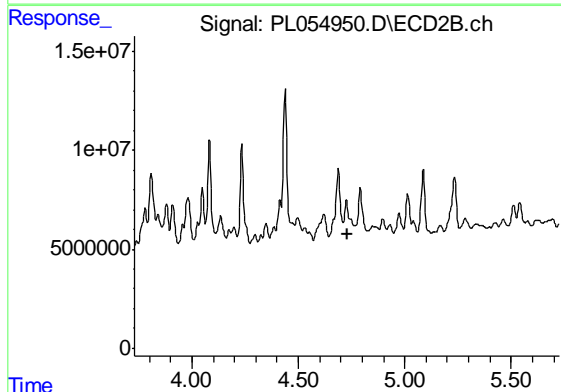
R.T.: 4.438 min  
 Delta R.T.: -0.005 min  
 Response: 72634951  
 Conc: 20.50 ng/ml



#3 gamma-BHC (Lindane)

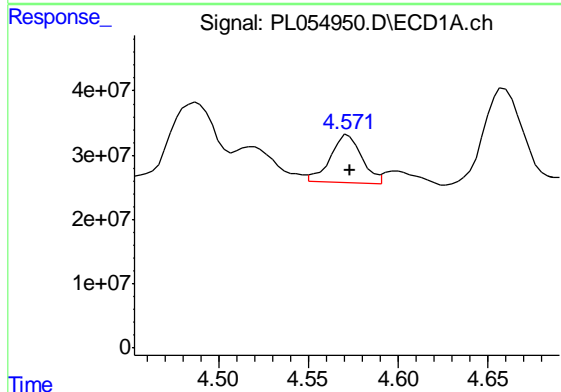
R.T.: 4.267 min  
 Delta R.T.: 0.000 min  
 Response: 78480757  
 Conc: 4.60 ng/ml

Instrument :  
 ECD\_L  
 ClientSampleId :  
 TI-604MS



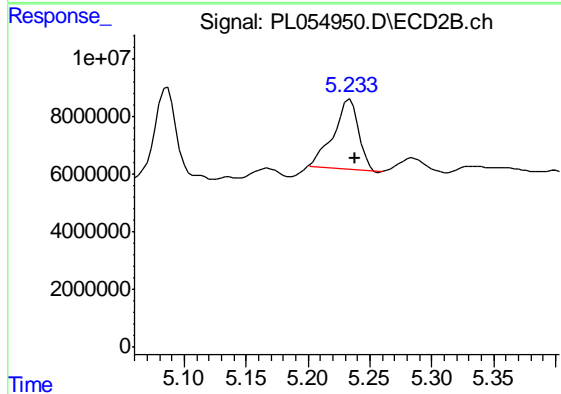
#3 gamma-BHC (Lindane)

R.T.: 4.726 min  
 Delta R.T.: -0.003 min  
 Response: -8186800  
 Conc: N.D.



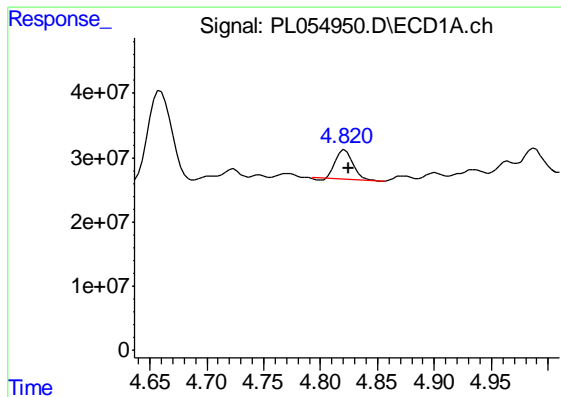
#4 Heptachlor

R.T.: 4.572 min  
 Delta R.T.: -0.001 min  
 Response: 90603002  
 Conc: 5.14 ng/ml



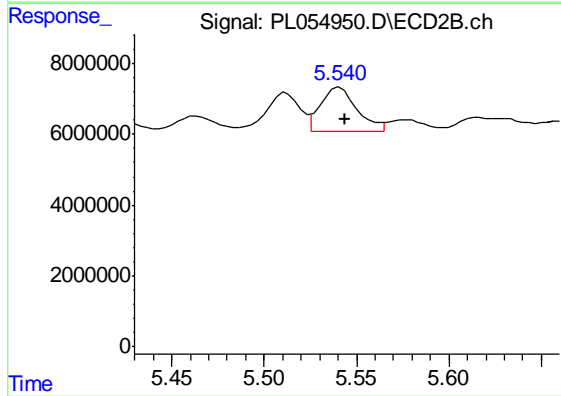
#4 Heptachlor

R.T.: 5.234 min  
 Delta R.T.: -0.004 min  
 Response: 34477393  
 Conc: 11.42 ng/ml

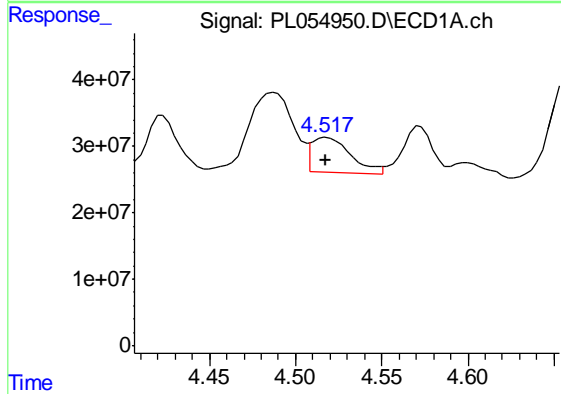


#5 Aldrin  
 R.T.: 4.821 min  
 Delta R.T.: -0.003 min  
 Response: 49702173  
 Conc: 3.05 ng/ml

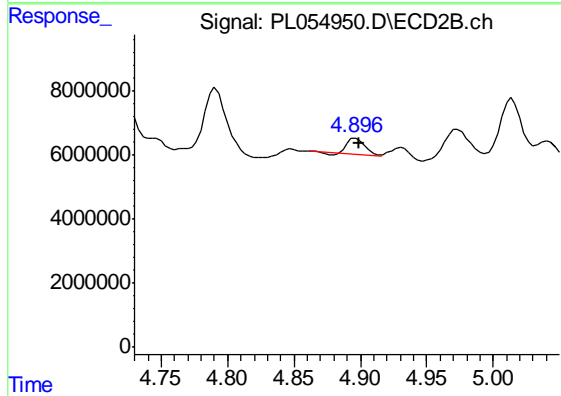
Instrument :  
 ECD\_L  
 ClientSampled :  
 TI-604MS



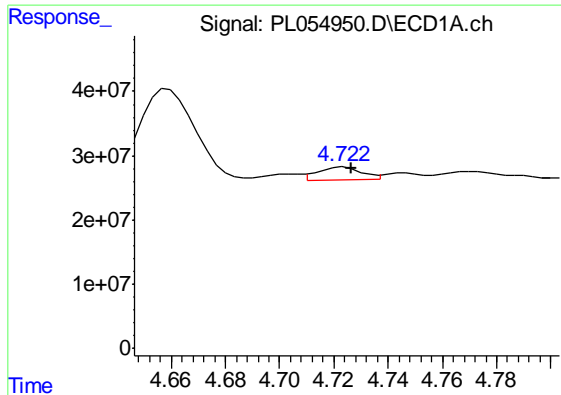
#5 Aldrin  
 R.T.: 5.541 min  
 Delta R.T.: -0.003 min  
 Response: 16954762  
 Conc: 6.08 ng/ml



#6 beta-BHC  
 R.T.: 4.518 min  
 Delta R.T.: 0.000 min  
 Response: 82480223  
 Conc: 11.12 ng/ml



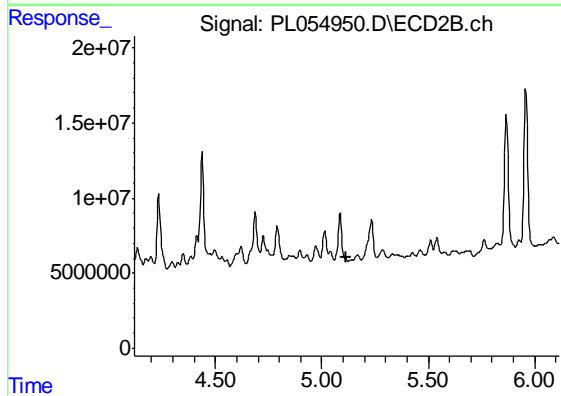
#6 beta-BHC  
 R.T.: 4.897 min  
 Delta R.T.: -0.002 min  
 Response: 4582913  
 Conc: 3.25 ng/ml



#7 delta-BHC

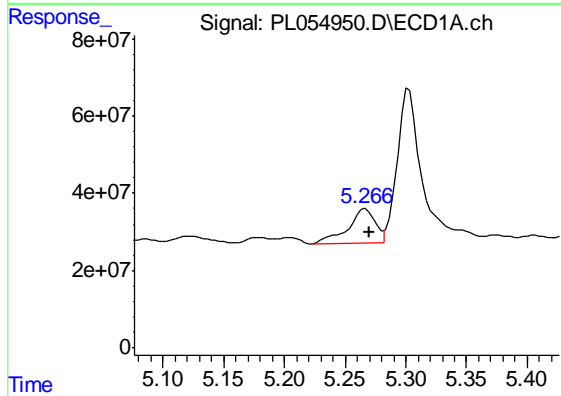
R.T.: 4.724 min  
 Delta R.T.: -0.002 min  
 Response: 21490901  
 Conc: 1.32 ng/ml

Instrument :  
 ECD\_L  
 ClientSampleId :  
 TI-604MS



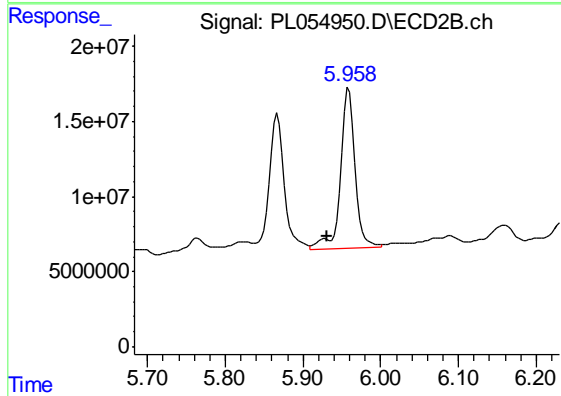
#7 delta-BHC

R.T.: 0.000 min  
 Exp R.T. : 5.117 min  
 Response: 0  
 Conc: N.D.



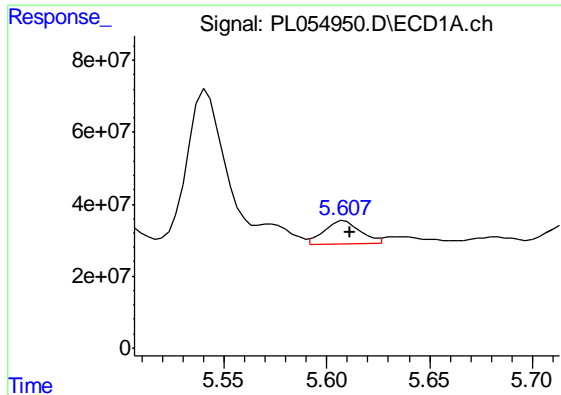
#8 Heptachlor epoxide

R.T.: 5.267 min  
 Delta R.T.: -0.003 min  
 Response: 139652669  
 Conc: 9.23 ng/ml



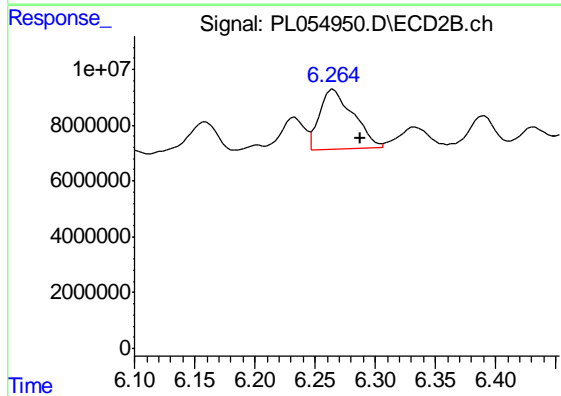
#8 Heptachlor epoxide

R.T.: 5.959 min  
 Delta R.T.: 0.029 min  
 Response: 140003978  
 Conc: 56.04 ng/ml

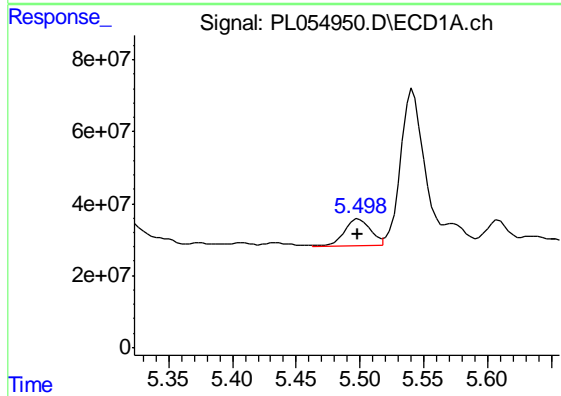


#9 Endosulfan I  
 R.T.: 5.609 min  
 Delta R.T.: -0.003 min  
 Response: 78532312  
 Conc: 5.76 ng/ml

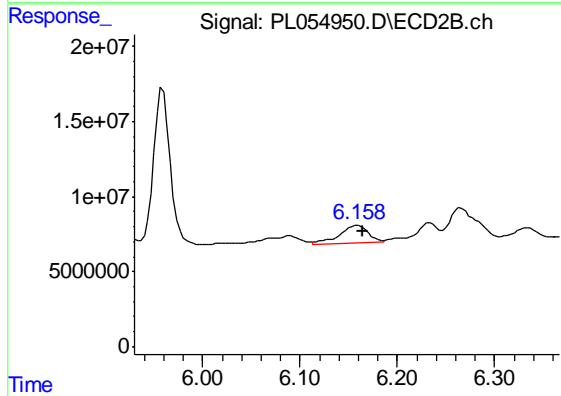
Instrument :  
 ECD\_L  
 ClientSampled :  
 TI-604MS



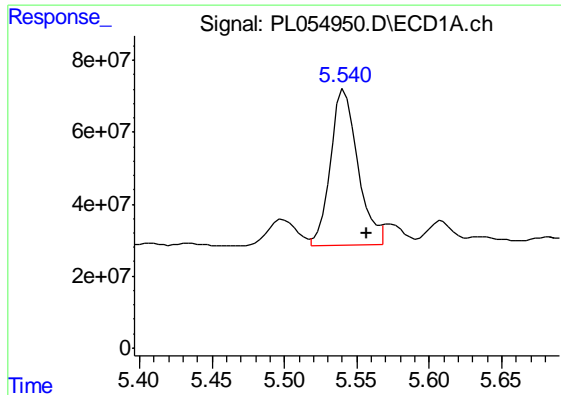
#9 Endosulfan I  
 R.T.: 6.265 min  
 Delta R.T.: -0.022 min  
 Response: 41623614  
 Conc: 16.83 ng/ml



#10 gamma-Chlordane  
 R.T.: 5.499 min  
 Delta R.T.: 0.000 min  
 Response: 105570823  
 Conc: 6.96 ng/ml



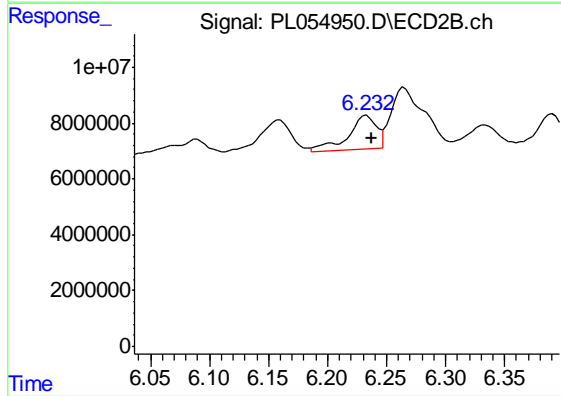
#10 gamma-Chlordane  
 R.T.: 6.159 min  
 Delta R.T.: -0.005 min  
 Response: 22935838  
 Conc: 8.71 ng/ml



#11 alpha-Chlordane

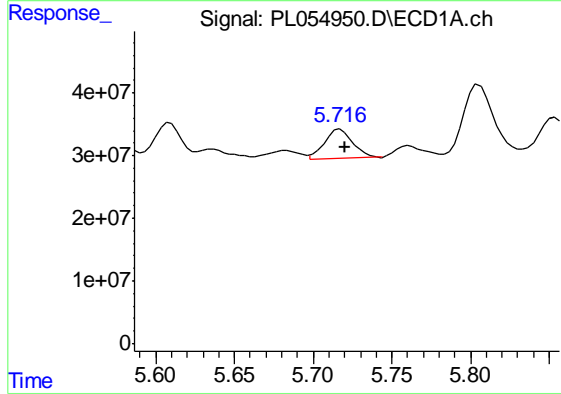
R.T.: 5.542 min  
 Delta R.T.: -0.015 min  
 Response: 564659434  
 Conc: 38.29 ng/ml

Instrument :  
 ECD\_L  
 ClientSampleId :  
 TI-604MS



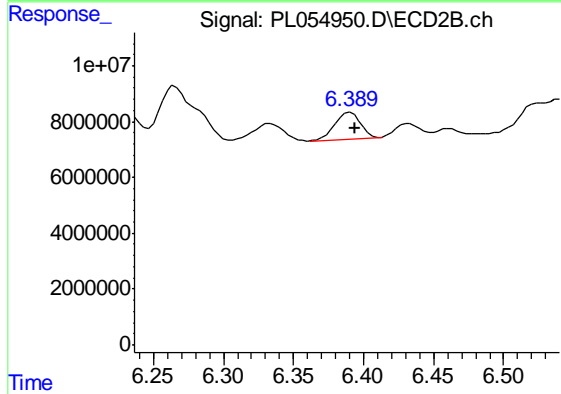
#11 alpha-Chlordane

R.T.: 6.233 min  
 Delta R.T.: -0.004 min  
 Response: 19514907  
 Conc: 7.43 ng/ml



#12 4,4'-DDE

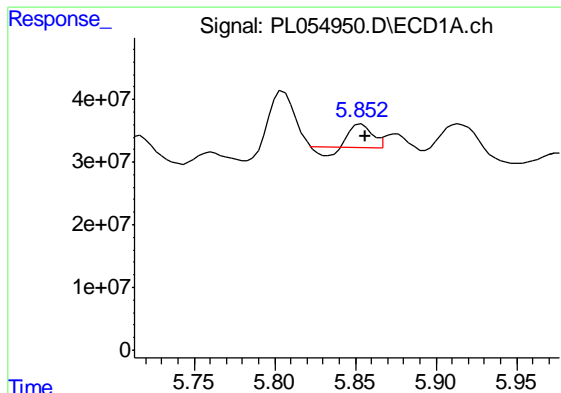
R.T.: 5.717 min  
 Delta R.T.: -0.003 min  
 Response: 58771087  
 Conc: 4.42 ng/ml



#12 4,4'-DDE

R.T.: 6.390 min  
 Delta R.T.: -0.003 min  
 Response: 12073590  
 Conc: 4.88 ng/ml

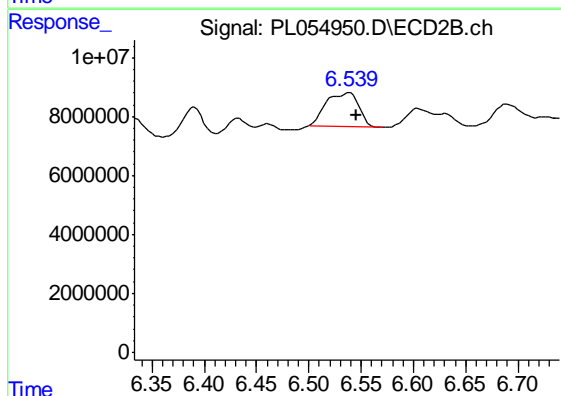




#13 Dieldrin

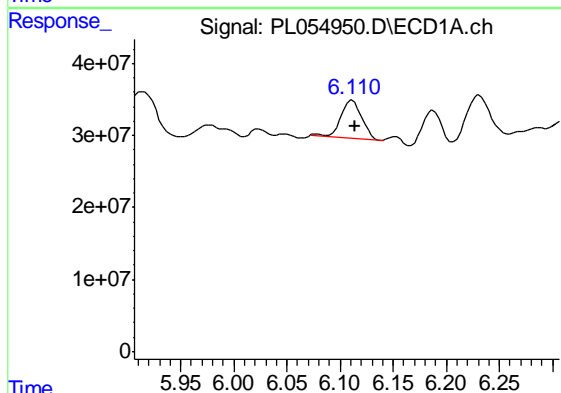
R.T.: 5.853 min  
 Delta R.T.: -0.003 min  
 Response: 29466805  
 Conc: 2.08 ng/ml

Instrument :  
 ECD\_L  
 ClientSampled :  
 TI-604MS



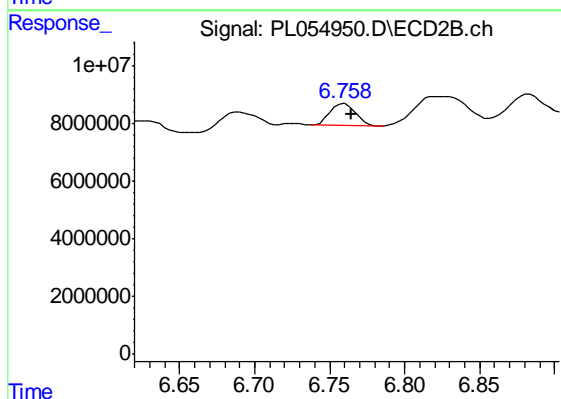
#13 Dieldrin

R.T.: 6.539 min  
 Delta R.T.: -0.006 min  
 Response: 24686908  
 Conc: 9.70 ng/ml



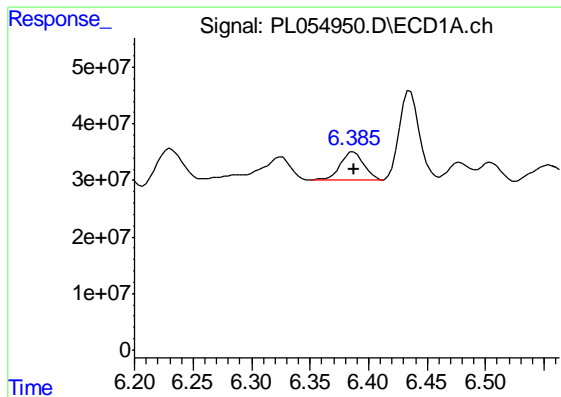
#14 Endrin

R.T.: 6.112 min  
 Delta R.T.: -0.003 min  
 Response: 70826408  
 Conc: 5.56 ng/ml



#14 Endrin

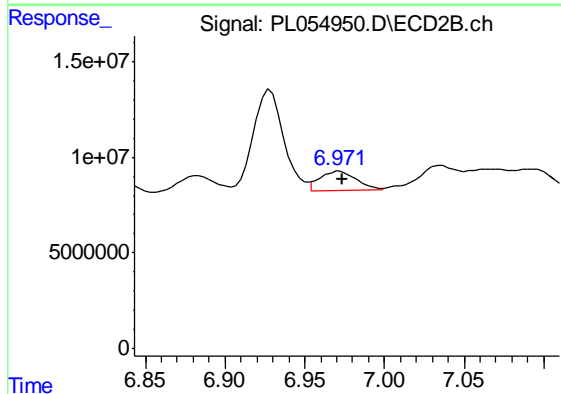
R.T.: 6.760 min  
 Delta R.T.: -0.004 min  
 Response: 8953001  
 Conc: 4.04 ng/ml



#15 Endosulfan II

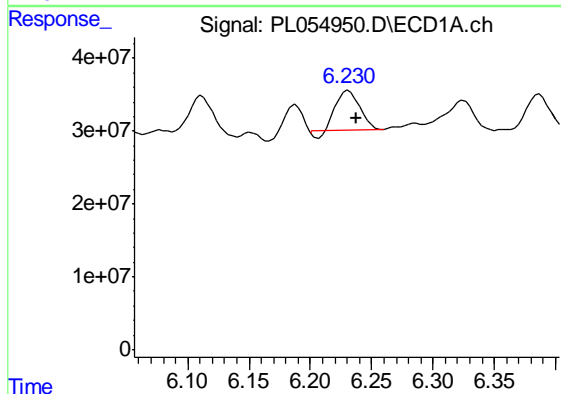
R.T.: 6.387 min  
Delta R.T.: 0.000 min  
Response: 67973917  
Conc: 5.62 ng/ml

Instrument :  
ECD\_L  
ClientSampleId :  
TI-604MS



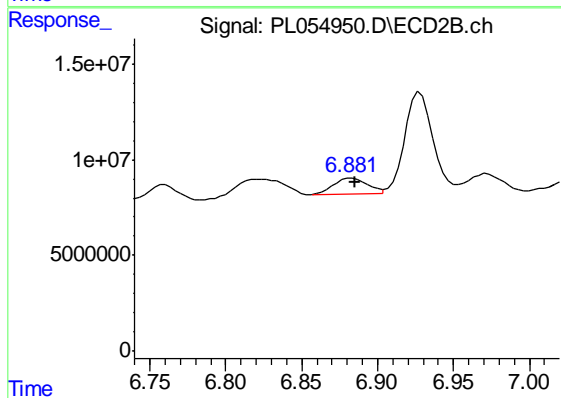
#15 Endosulfan II

R.T.: 6.972 min  
Delta R.T.: -0.002 min  
Response: 16304096  
Conc: 6.93 ng/ml



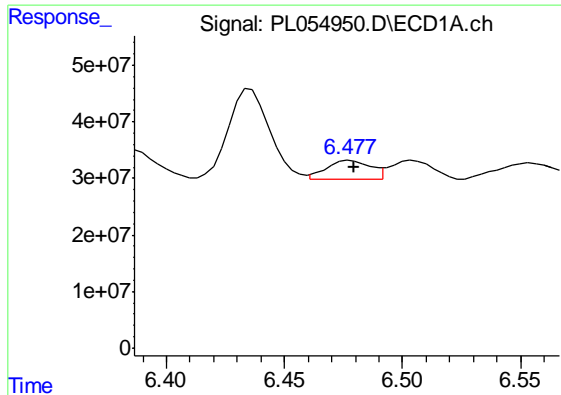
#16 4,4'-DDD

R.T.: 6.231 min  
Delta R.T.: -0.006 min  
Response: 69629844  
Conc: 7.13 ng/ml



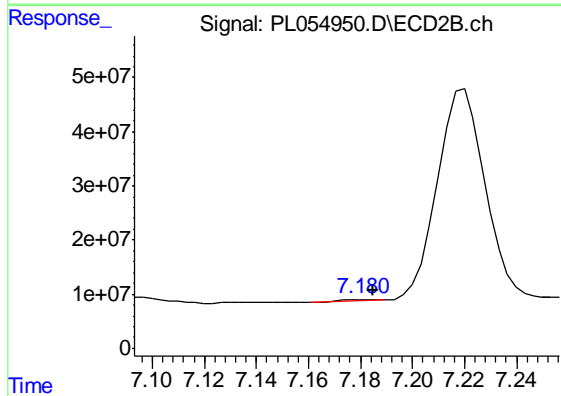
#16 4,4'-DDD

R.T.: 6.883 min  
Delta R.T.: -0.002 min  
Response: 12355763  
Conc: 6.44 ng/ml

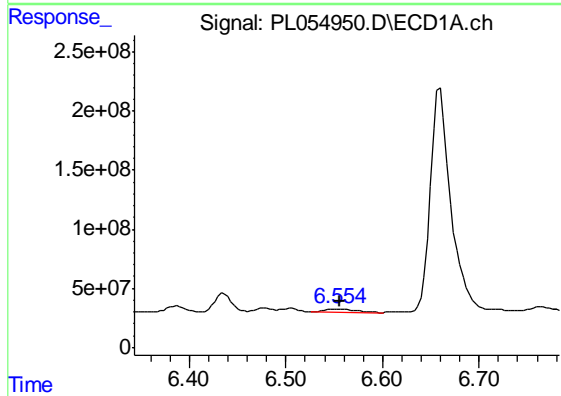


#17 4,4'-DDT  
 R.T.: 6.478 min  
 Delta R.T.: -0.001 min  
 Response: 42665514  
 Conc: 4.07 ng/ml

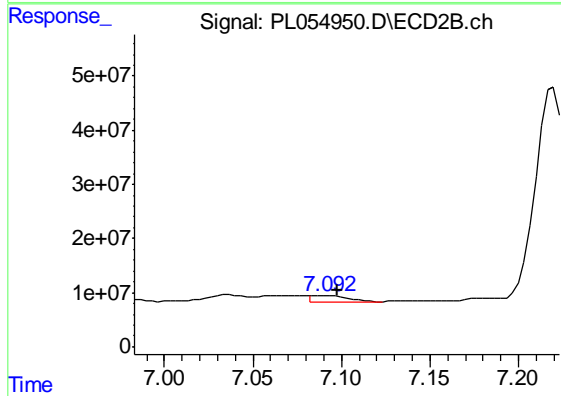
Instrument :  
 ECD\_L  
 ClientSampled :  
 TI-604MS



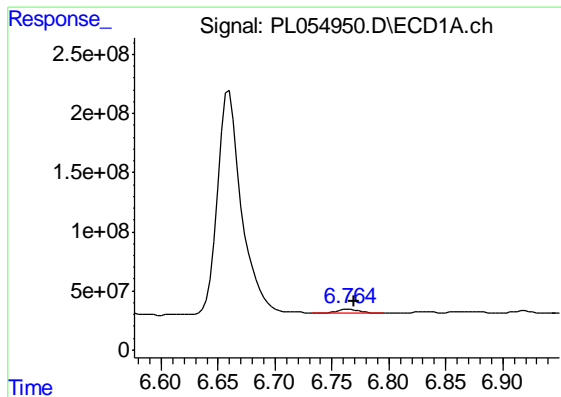
#17 4,4'-DDT  
 R.T.: 7.182 min  
 Delta R.T.: -0.003 min  
 Response: 1912543  
 Conc: 0.97 ng/ml



#18 Endrin aldehyde  
 R.T.: 6.555 min  
 Delta R.T.: 0.000 min  
 Response: 62135293  
 Conc: 6.27 ng/ml

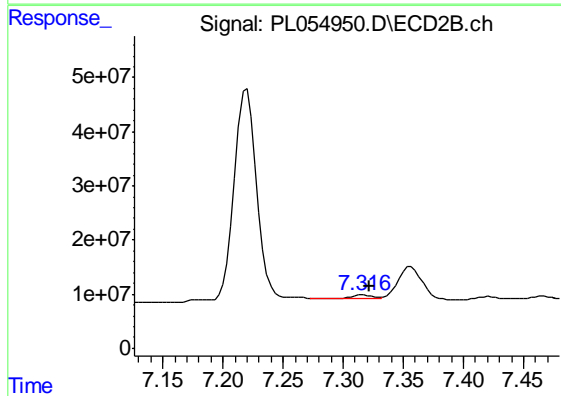


#18 Endrin aldehyde  
 R.T.: 7.093 min  
 Delta R.T.: -0.005 min  
 Response: 16060577  
 Conc: 8.19 ng/ml

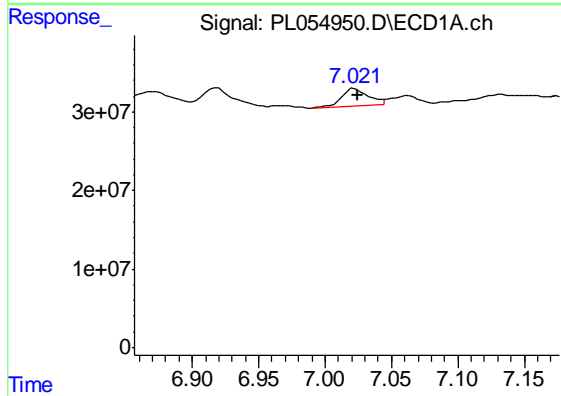


#19 Endosulfan Sulfate  
 R.T.: 6.765 min  
 Delta R.T.: -0.004 min  
 Response: 38097146  
 Conc: 3.56 ng/ml

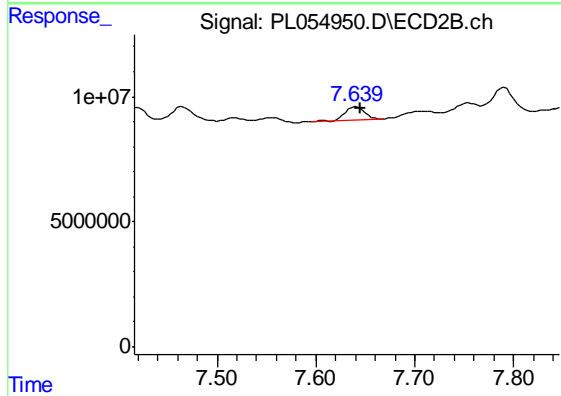
Instrument :  
 ECD\_L  
 ClientSampleId :  
 TI-604MS



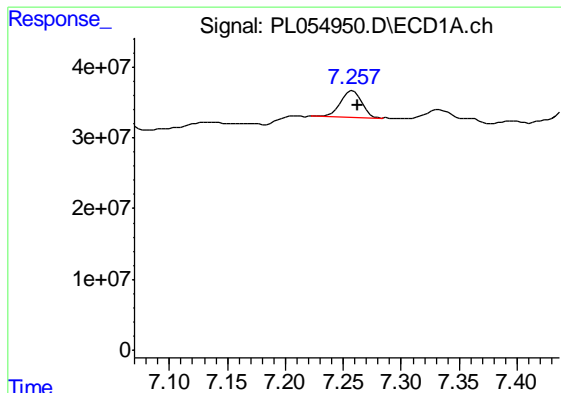
#19 Endosulfan Sulfate  
 R.T.: 7.317 min  
 Delta R.T.: -0.005 min  
 Response: 4732853  
 Conc: 2.23 ng/ml



#20 Methoxychlor  
 R.T.: 7.022 min  
 Delta R.T.: -0.002 min  
 Response: 30807589  
 Conc: 6.15 ng/ml



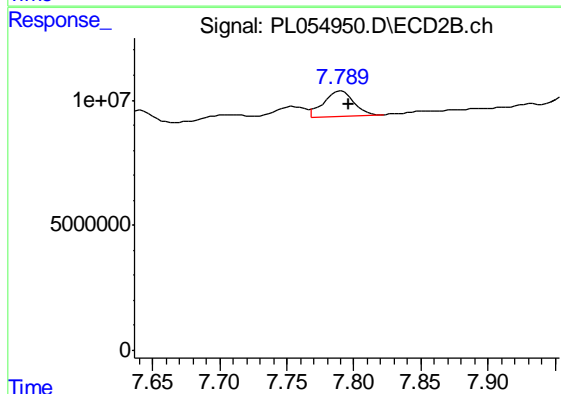
#20 Methoxychlor  
 R.T.: 7.641 min  
 Delta R.T.: -0.004 min  
 Response: 7152553  
 Conc: 6.27 ng/ml



#21 Endrin ketone

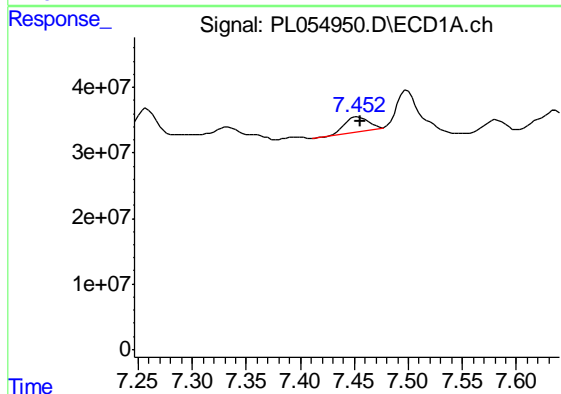
R.T.: 7.258 min  
 Delta R.T.: -0.005 min  
 Response: 48528075  
 Conc: 4.46 ng/ml

Instrument :  
 ECD\_L  
 ClientSampleId :  
 TI-604MS



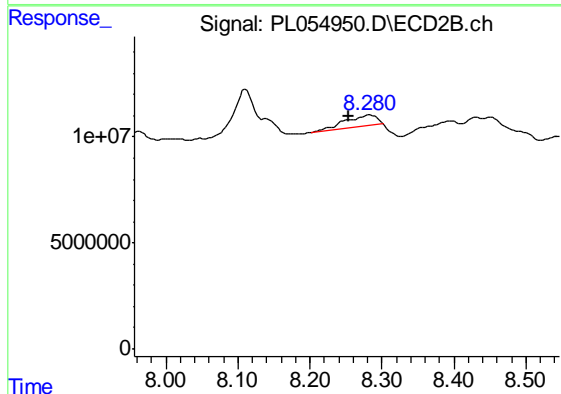
#21 Endrin ketone

R.T.: 7.791 min  
 Delta R.T.: -0.006 min  
 Response: 15666075  
 Conc: 6.96 ng/ml



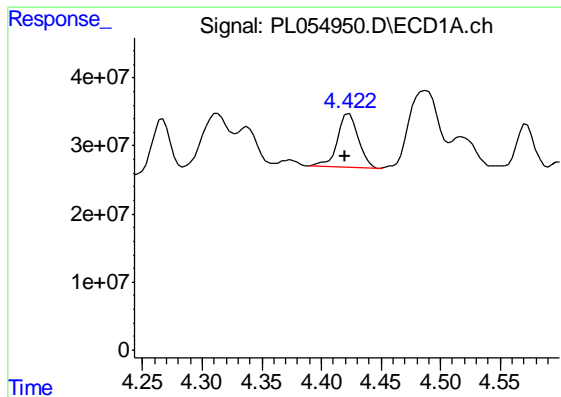
#22 Mirex

R.T.: 7.453 min  
 Delta R.T.: -0.002 min  
 Response: 34457648  
 Conc: 4.24 ng/ml



#22 Mirex

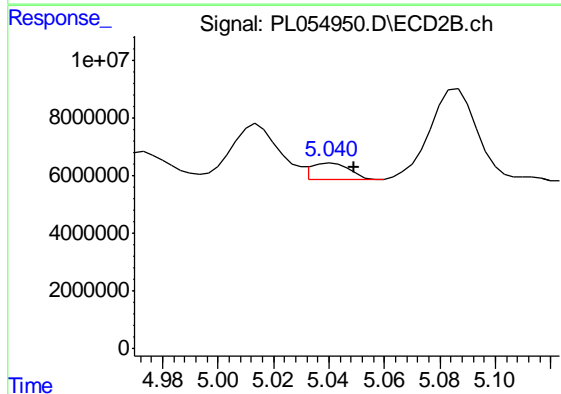
R.T.: 8.283 min  
 Delta R.T.: 0.029 min  
 Response: 15911452  
 Conc: 9.21 ng/ml



#23 Chlordane-1

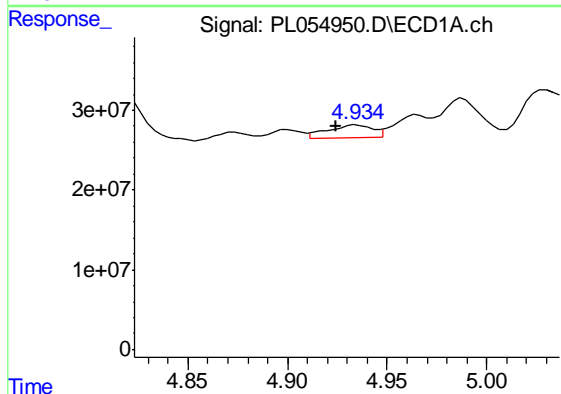
R.T.: 4.423 min  
 Delta R.T.: 0.004 min  
 Response: 96395576  
 Conc: 244.26 ng/ml

Instrument :  
 ECD\_L  
 ClientSampleId :  
 TI-604MS



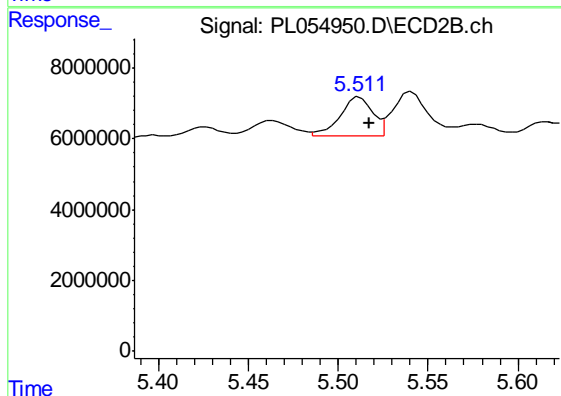
#23 Chlordane-1

R.T.: 5.041 min  
 Delta R.T.: -0.008 min  
 Response: 5574642  
 Conc: 69.93 ng/ml



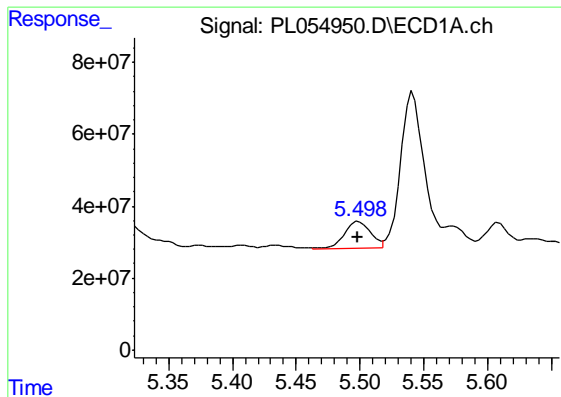
#24 Chlordane-2

R.T.: 4.935 min  
 Delta R.T.: 0.011 min  
 Response: 24873915  
 Conc: 57.28 ng/ml



#24 Chlordane-2

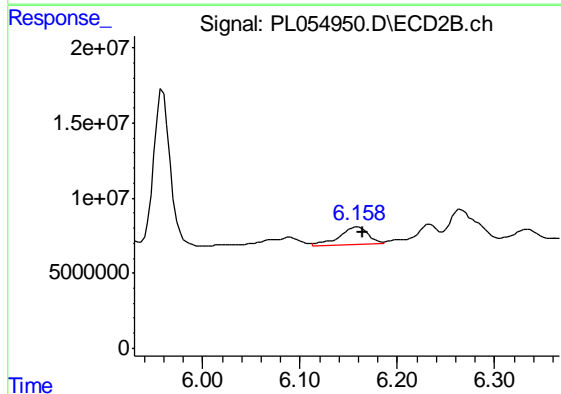
R.T.: 5.512 min  
 Delta R.T.: -0.005 min  
 Response: 14040701  
 Conc: 156.66 ng/ml



#25 Chlordane-3

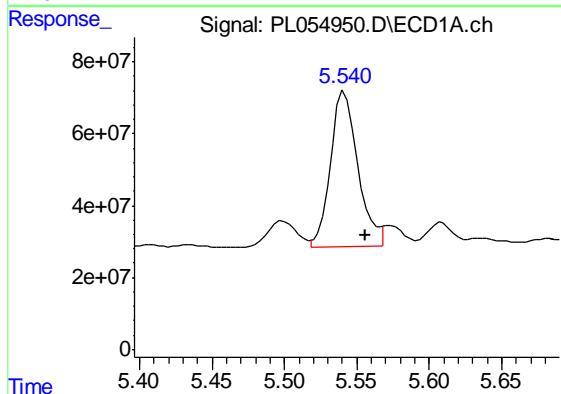
R.T.: 5.499 min  
 Delta R.T.: 0.000 min  
 Response: 105570823  
 Conc: 82.21 ng/ml

Instrument :  
 ECD\_L  
 ClientSampled :  
 TI-604MS



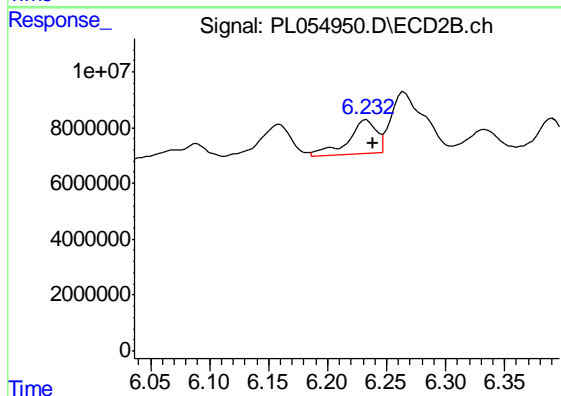
#25 Chlordane-3

R.T.: 6.159 min  
 Delta R.T.: -0.005 min  
 Response: 22935838  
 Conc: 73.89 ng/ml



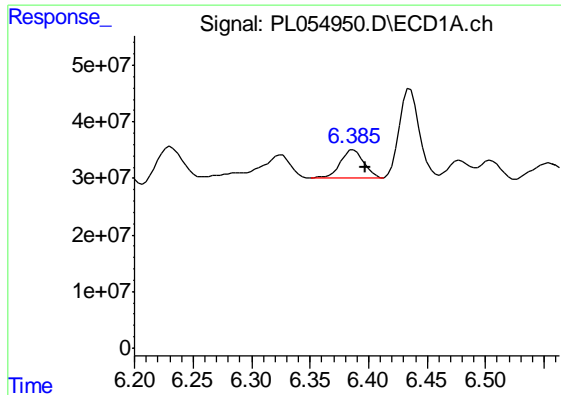
#26 Chlordane-4

R.T.: 5.542 min  
 Delta R.T.: -0.015 min  
 Response: 564659434  
 Conc: 534.57 ng/ml



#26 Chlordane-4

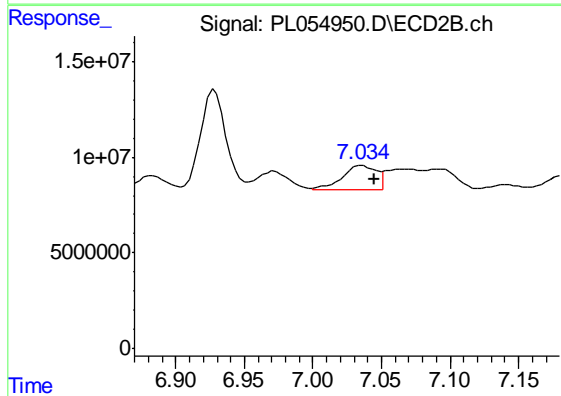
R.T.: 6.233 min  
 Delta R.T.: -0.005 min  
 Response: 19514907  
 Conc: 51.86 ng/ml



#27 Chlordane-5

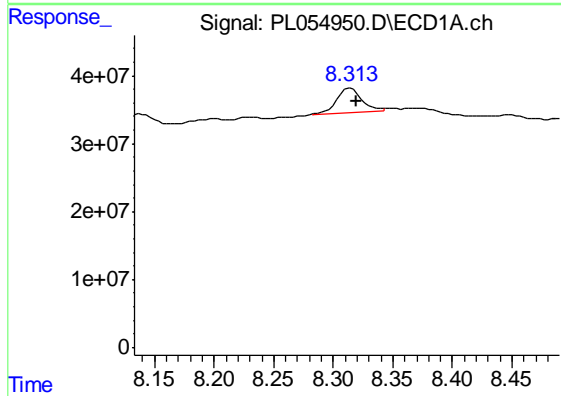
R.T.: 6.387 min  
 Delta R.T.: -0.011 min  
 Response: 67973917  
 Conc: 180.54 ng/ml

Instrument :  
 ECD\_L  
 ClientSampleId :  
 TI-604MS



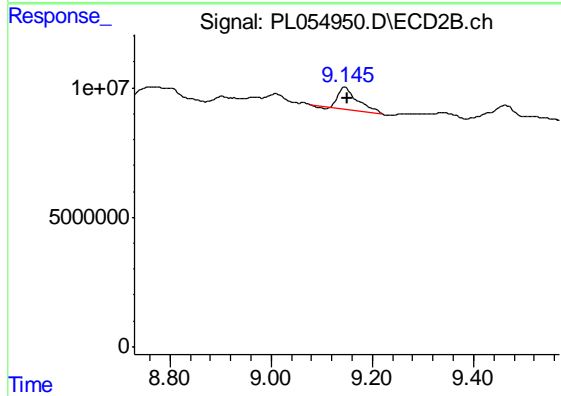
#27 Chlordane-5

R.T.: 7.036 min  
 Delta R.T.: -0.009 min  
 Response: 22289461  
 Conc: 330.62 ng/ml



#28 Decachlorobiphenyl

R.T.: 8.314 min  
 Delta R.T.: -0.005 min  
 Response: 52731872  
 Conc: 5.51 ng/ml



#28 Decachlorobiphenyl

R.T.: 9.147 min  
 Delta R.T.: -0.005 min  
 Response: 21254714  
 Conc: 8.87 ng/ml