

Data Path : Z:\pestpcbsrv\HPCHEM1\ECD_L\Data\PL121120\
 Data File : PL063443.D
 Signal(s) : Signal #1: ECD1A.ch Signal #2: ECD2B.ch
 Acq On : 10 Dec 2020 09:03
 Operator : DD\AJ
 Sample : PCHLORICC1000
 Misc :
 ALS Vial : 4 Sample Multiplier: 1

Instrument :
 ECD_L
 ClientSampleId :
 PCHLORICC1000

Integration File signal 1: autoint1.e
 Integration File signal 2: autoint2.e
 Quant Time: Dec 10 09:50:46 2020
 Quant Method : Z:\pestpcbsrv\HPCHEM1\ECD_L\methods\PL121020.M
 Quant Title : GC Extractables
 QLast Update : Thu Dec 10 09:46:51 2020
 Response via : Initial Calibration
 Integrator: ChemStation

Volume Inj. : 1 µl
 Signal #1 Phase : ZB-MR2 Signal #2 Phase: ZB-MR1
 Signal #1 Info : 30M x 0.32mm x0.2 Signal #2 Info : 30M x 0.32mm x0.5µm

Compound	RT#1	RT#2	Resp#1	Resp#2	ng/ml	ng/ml

System Monitoring Compounds						
1) SA Tetrachlo...	3.408	3.949	206.1E6	323.3E6	97.927	96.170
28) SA Decachlor...	8.125	8.989	189.3E6	246.5E6	90.530	91.727
Target Compounds						
23) Chlordane-1	4.267	4.936	54086830	115.1E6	940.029	964.566
24) Chlordane-2	4.763	5.403	61301466	122.8E6	959.601	926.513
25) Chlordane-3	5.326	6.046	171.3E6	460.3E6	963.328	954.490
26) Chlordane-4	5.383	6.120	145.8E6	540.4E6	977.374	943.093
27) Chlordane-5	6.212	6.922	60727095	93074901	964.719	1005.060

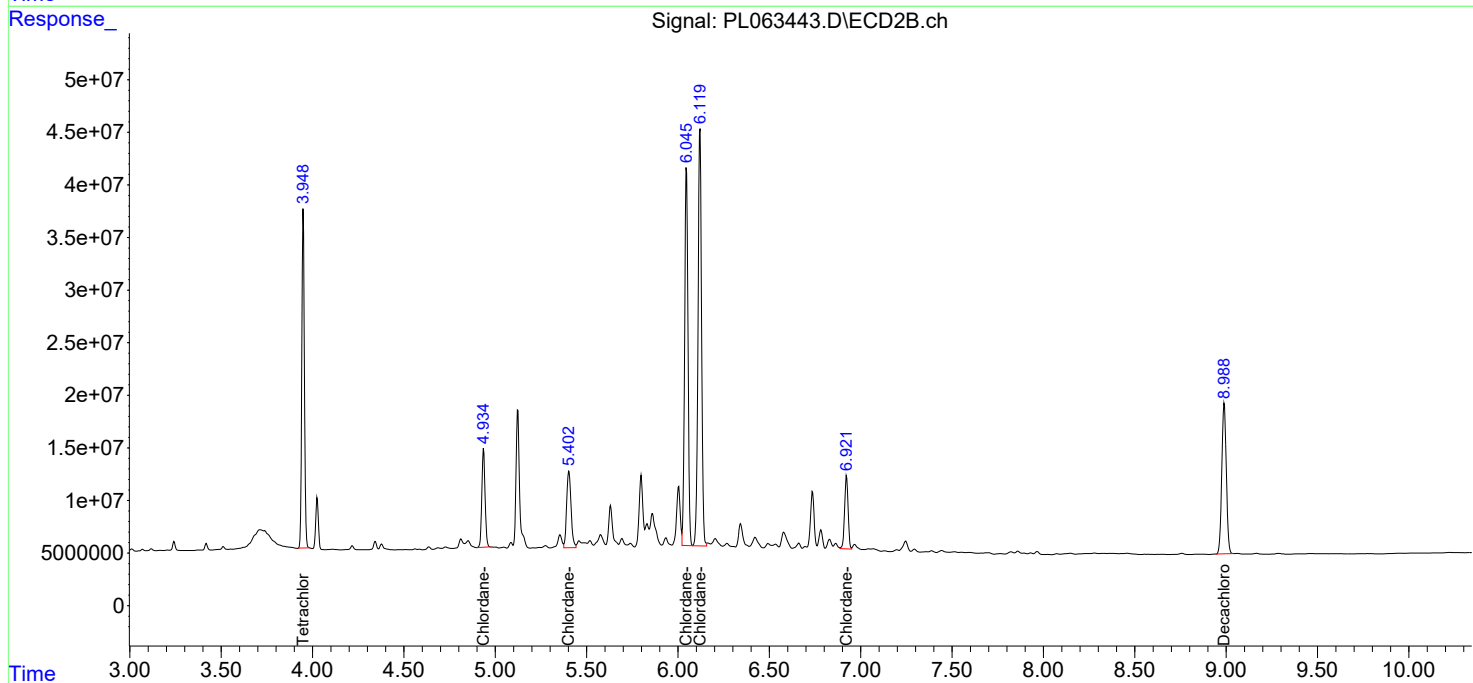
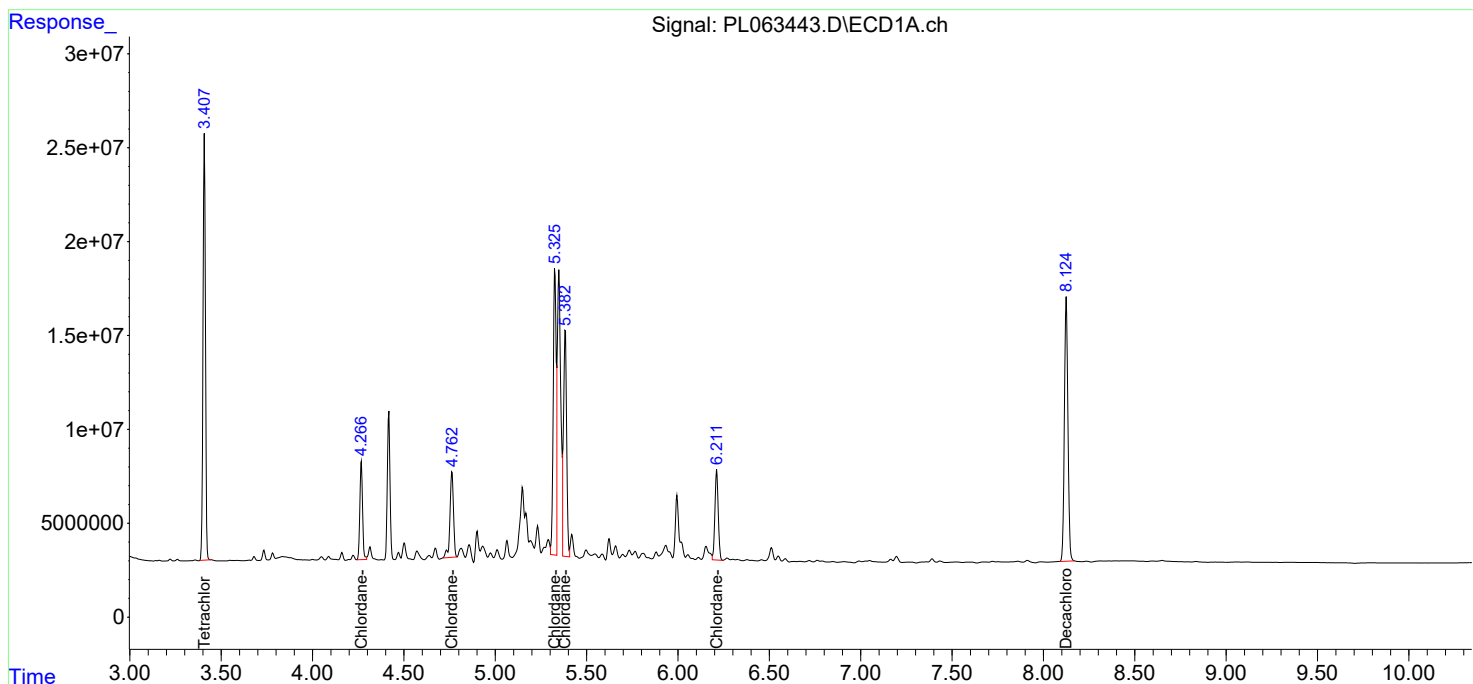
(f)=RT Delta > 1/2 Window (#)=Amounts differ by > 25% (m)=manual int.

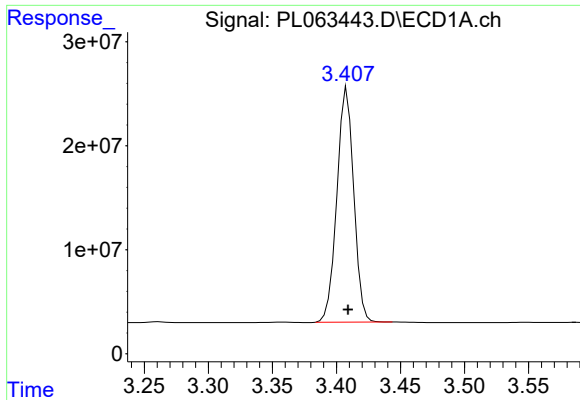
Data Path : Z:\pestpcbsrv\HPCHEM1\ECD_L\Data\PL121120\
 Data File : PL063443.D
 Signal(s) : Signal #1: ECD1A.ch Signal #2: ECD2B.ch
 Acq On : 10 Dec 2020 09:03
 Operator : DD\AJ
 Sample : PCHLORICC1000
 Misc :
 ALS Vial : 4 Sample Multiplier: 1

Instrument :
 ECD_L
 ClientSampleId :
 PCHLORICC1000

Integration File signal 1: autoint1.e
 Integration File signal 2: autoint2.e
 Quant Time: Dec 10 09:50:46 2020
 Quant Method : Z:\pestpcbsrv\HPCHEM1\ECD_L\methods\PL121020.M
 Quant Title : GC Extractables
 QLast Update : Thu Dec 10 09:46:51 2020
 Response via : Initial Calibration
 Integrator: ChemStation

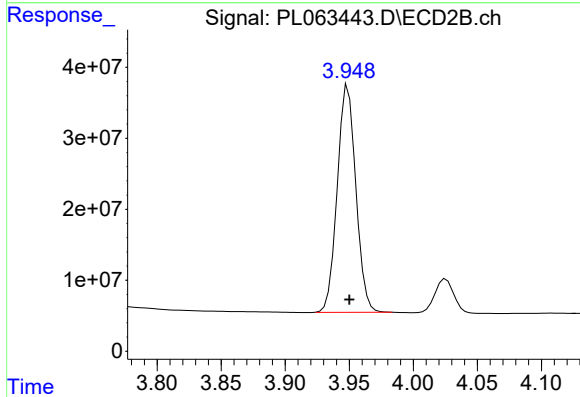
Volume Inj. : 1 µl
 Signal #1 Phase : ZB-MR2 Signal #2 Phase: ZB-MR1
 Signal #1 Info : 30M x 0.32mm x0.2 Signal #2 Info : 30M x 0.32mm x0.5µm



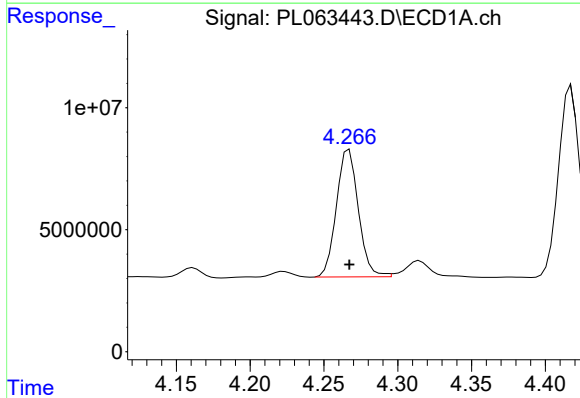


#1 Tetrachloro-m-xylene
 R.T.: 3.408 min
 Delta R.T.: 0.000 min
 Response: 206141024
 Conc: 97.93 ng/ml

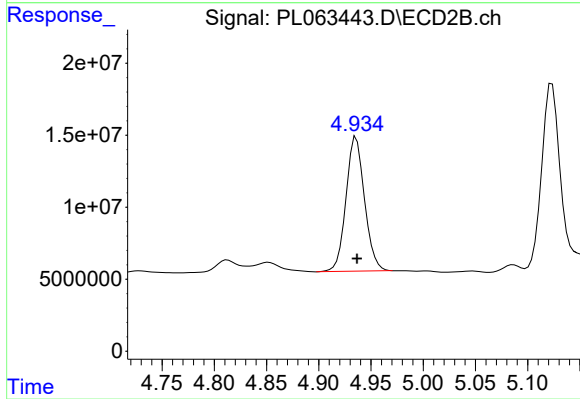
Instrument :
 ECD_L
 ClientSampleId :
 PCHLORICC1000



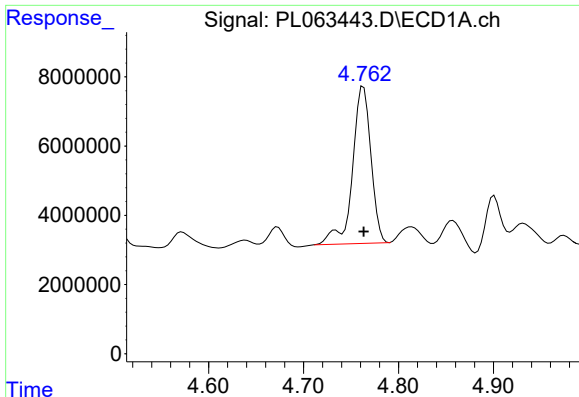
#1 Tetrachloro-m-xylene
 R.T.: 3.949 min
 Delta R.T.: 0.000 min
 Response: 323301980
 Conc: 96.17 ng/ml



#23 Chlordane-1
 R.T.: 4.267 min
 Delta R.T.: 0.000 min
 Response: 54086830
 Conc: 940.03 ng/ml



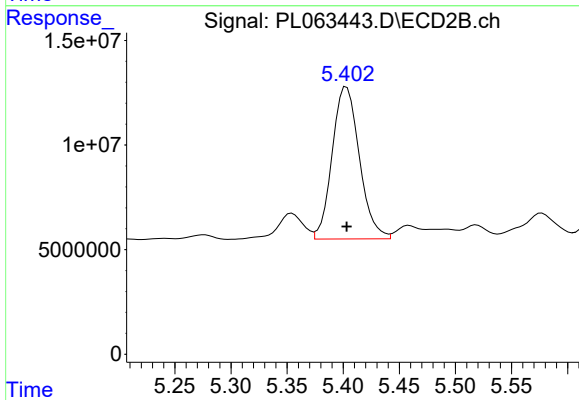
#23 Chlordane-1
 R.T.: 4.936 min
 Delta R.T.: 0.000 min
 Response: 115135145
 Conc: 964.57 ng/ml



#24 Chlordane-2

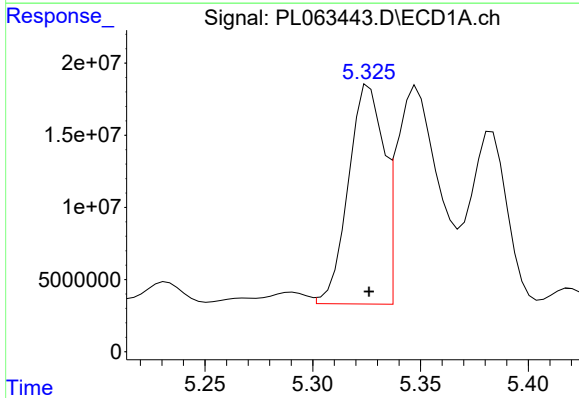
R.T.: 4.763 min
Delta R.T.: 0.000 min
Response: 61301466
Conc: 959.60 ng/ml

Instrument :
ECD_L
ClientSampleId :
PCHLORICC1000



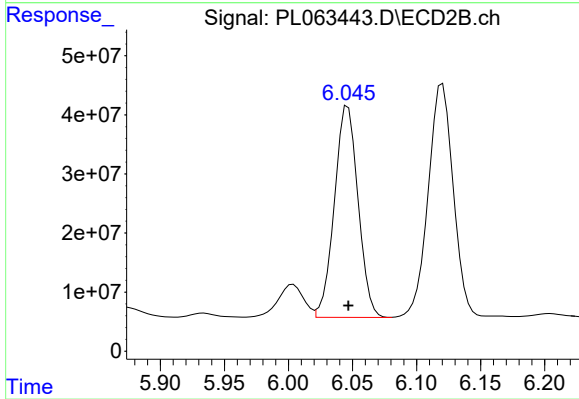
#24 Chlordane-2

R.T.: 5.403 min
Delta R.T.: 0.000 min
Response: 122805914
Conc: 926.51 ng/ml



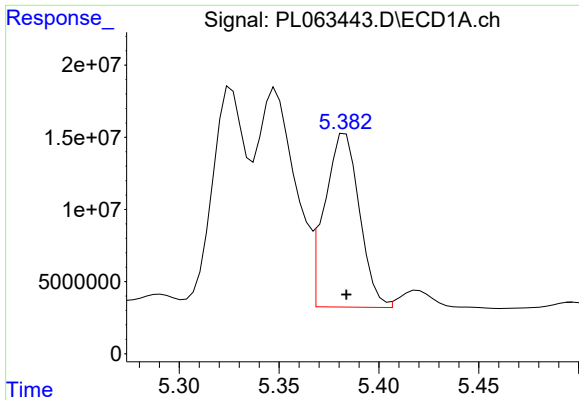
#25 Chlordane-3

R.T.: 5.326 min
Delta R.T.: 0.000 min
Response: 171298361
Conc: 963.33 ng/ml



#25 Chlordane-3

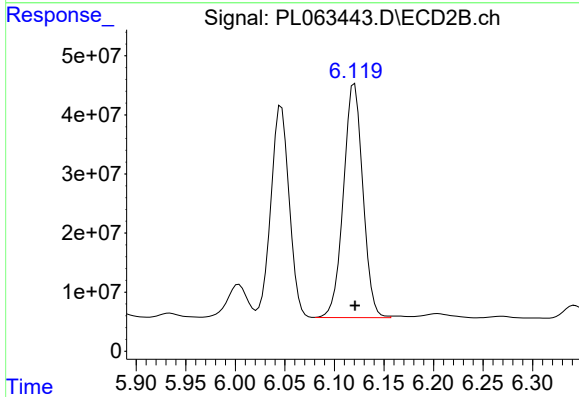
R.T.: 6.046 min
Delta R.T.: 0.000 min
Response: 460252318
Conc: 954.49 ng/ml



#26 Chlordane-4

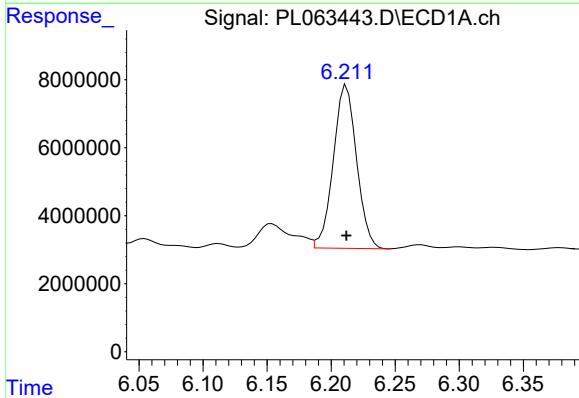
R.T.: 5.383 min
 Delta R.T.: 0.000 min
 Response: 145787030
 Conc: 977.37 ng/ml

Instrument :
 ECD_L
 ClientSampleId :
 PCHLORICC1000



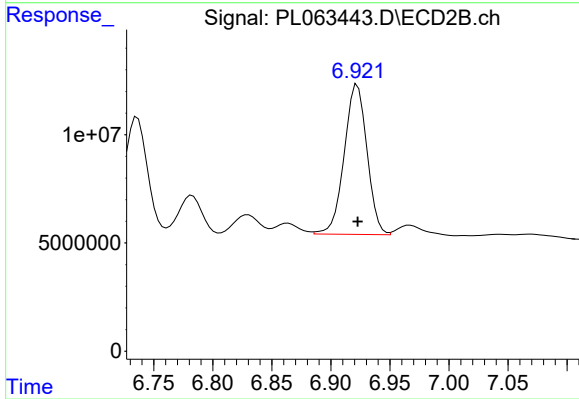
#26 Chlordane-4

R.T.: 6.120 min
 Delta R.T.: 0.000 min
 Response: 540441947
 Conc: 943.09 ng/ml



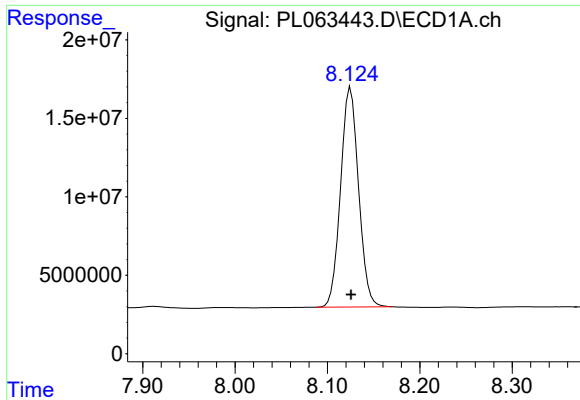
#27 Chlordane-5

R.T.: 6.212 min
 Delta R.T.: 0.000 min
 Response: 60727095
 Conc: 964.72 ng/ml



#27 Chlordane-5

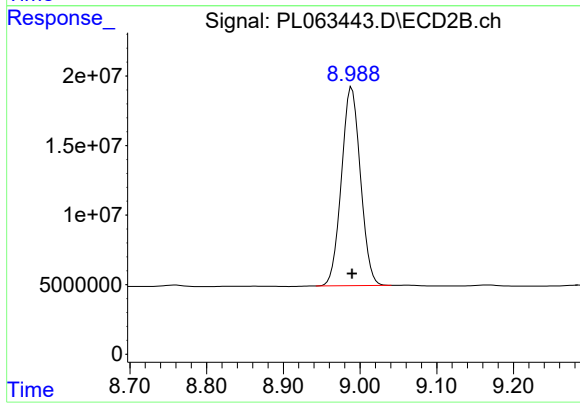
R.T.: 6.922 min
 Delta R.T.: 0.000 min
 Response: 93074901
 Conc: 1005.06 ng/ml



#28 Decachlorobiphenyl

R.T.: 8.125 min
Delta R.T.: 0.000 min
Response: 189285419
Conc: 90.53 ng/ml

Instrument :
ECD_L
ClientSampleId :
PCHLORICC1000



#28 Decachlorobiphenyl

R.T.: 8.989 min
Delta R.T.: 0.000 min
Response: 246526913
Conc: 91.73 ng/ml