

Data Path : Z:\pestpcbsrv\HPCHEM1\ECD_L\Data\PL121120\
 Data File : PL063470.D
 Signal(s) : Signal #1: ECD1A.ch Signal #2: ECD2B.ch
 Acq On : 10 Dec 2020 16:00
 Operator : DD\AJ
 Sample : I.BLK
 Misc :
 ALS Vial : 2 Sample Multiplier: 1

Instrument :
 ECD_L
 ClientSampleId :
 I.BLK

Integration File signal 1: autoint1.e
 Integration File signal 2: autoint2.e
 Quant Time: Dec 11 04:56:04 2020
 Quant Method : Z:\pestpcbsrv\HPCHEM1\ECD_L\methods\PL121020.M
 Quant Title : GC Extractables
 QLast Update : Thu Dec 10 15:57:40 2020
 Response via : Initial Calibration
 Integrator: ChemStation

Volume Inj. : 1 µl
 Signal #1 Phase : ZB-MR2 Signal #2 Phase: ZB-MR1
 Signal #1 Info : 30M x 0.32mm x0.2 Signal #2 Info : 30M x 0.32mm x0.5µm

Compound	RT#1	RT#2	Resp#1	Resp#2	ng/ml	ng/ml

System Monitoring Compounds						
1) SA Tetrachlo...	3.409	3.949	38532332	67599747	22.643	21.569
28) SA Decachlor...	8.125	8.988	41132357	54362095	20.425	21.587
Target Compounds						
8) B Heptachlo...	0.000	5.821	0	3233641	N.D.	0.893 #

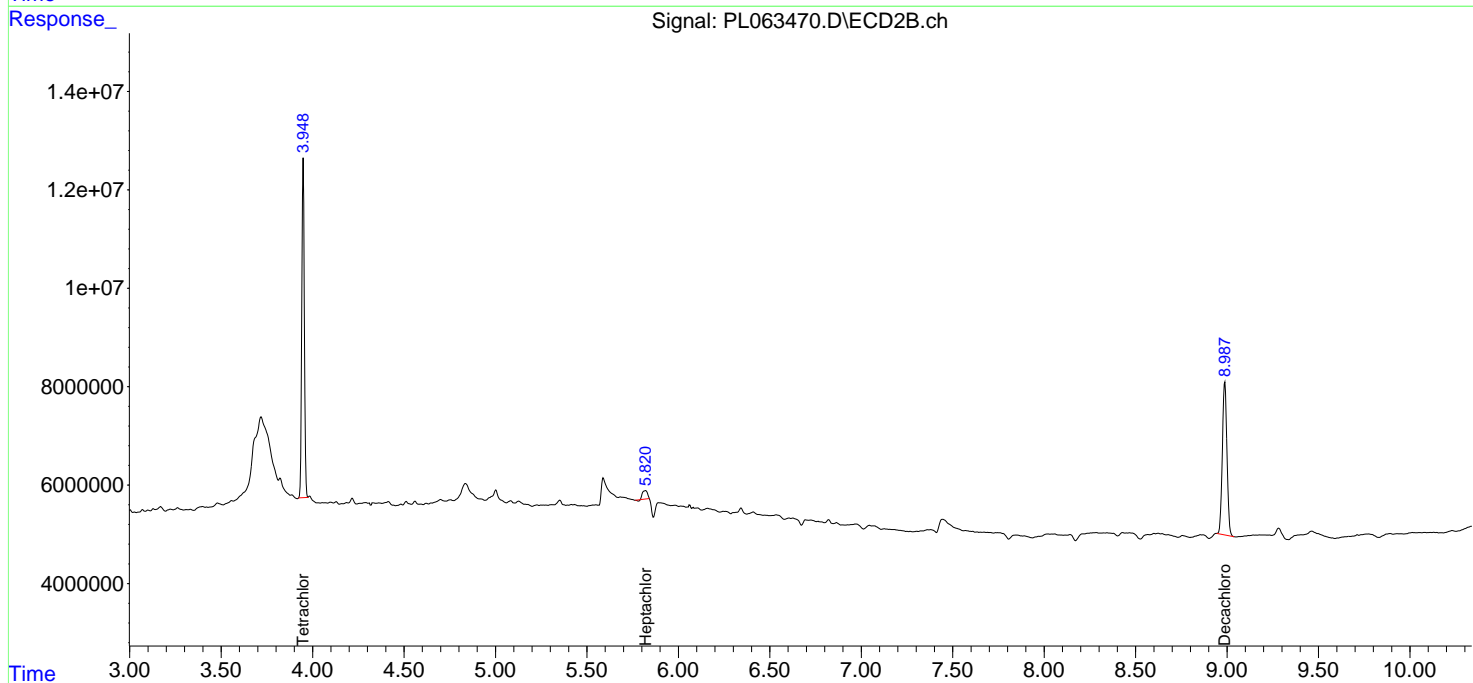
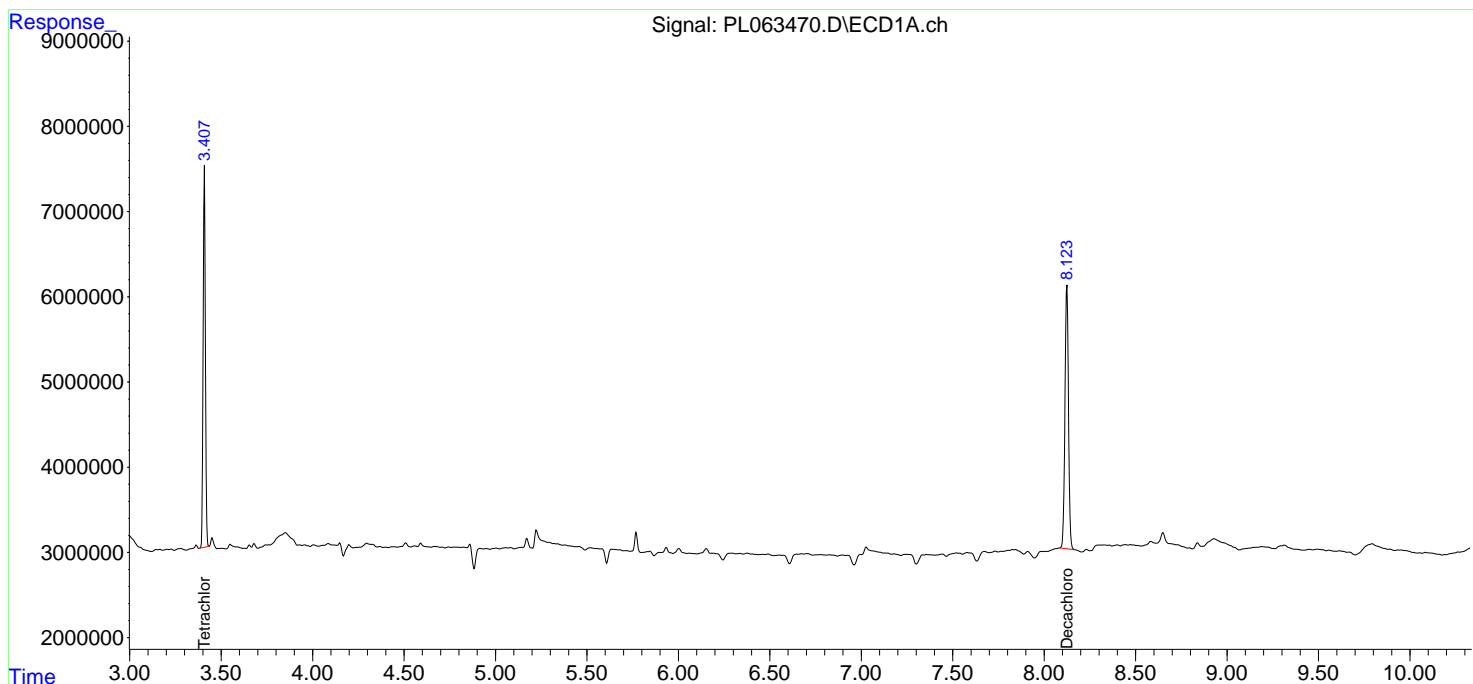
(f)=RT Delta > 1/2 Window (#)=Amounts differ by > 25% (m)=manual int.

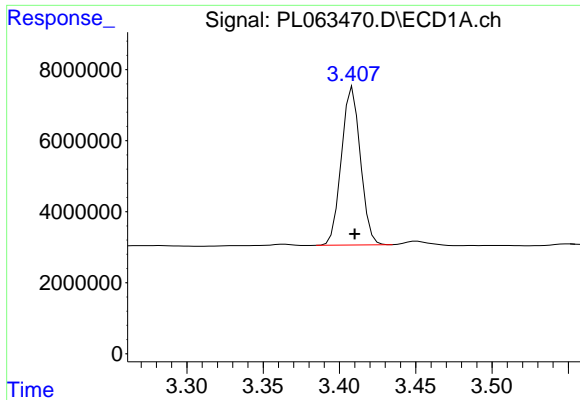
Data Path : Z:\pestpcbsrv\HPCHEM1\ECD_L\Data\PL121120\
 Data File : PL063470.D
 Signal(s) : Signal #1: ECD1A.ch Signal #2: ECD2B.ch
 Acq On : 10 Dec 2020 16:00
 Operator : DD\AJ
 Sample : I.BLK
 Misc :
 ALS Vial : 2 Sample Multiplier: 1

Instrument :
 ECD_L
 ClientSampled :
 I.BLK

Integration File signal 1: autoint1.e
 Integration File signal 2: autoint2.e
 Quant Time: Dec 11 04:56:04 2020
 Quant Method : Z:\pestpcbsrv\HPCHEM1\ECD_L\methods\PL121020.M
 Quant Title : GC Extractables
 QLast Update : Thu Dec 10 15:57:40 2020
 Response via : Initial Calibration
 Integrator: ChemStation

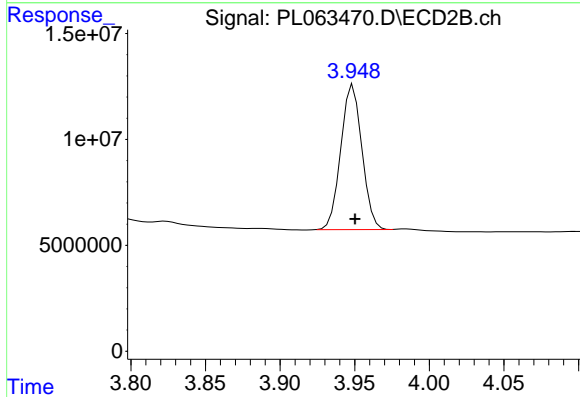
Volume Inj. : 1 µl
 Signal #1 Phase : ZB-MR2 Signal #2 Phase: ZB-MR1
 Signal #1 Info : 30M x 0.32mm x0.2 Signal #2 Info : 30M x 0.32mm x0.5µm



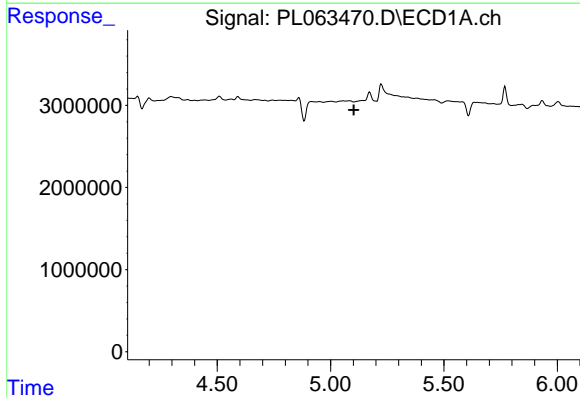


#1 Tetrachloro-m-xylene
 R.T.: 3.409 min
 Delta R.T.: -0.001 min
 Response: 38532332
 Conc: 22.64 ng/ml

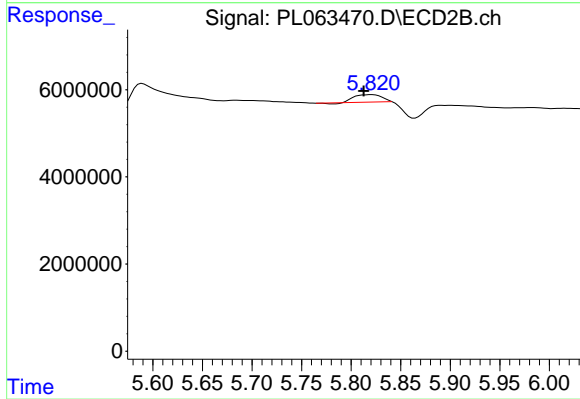
Instrument :
 ECD_L
 ClientSampled :
 I.BLK



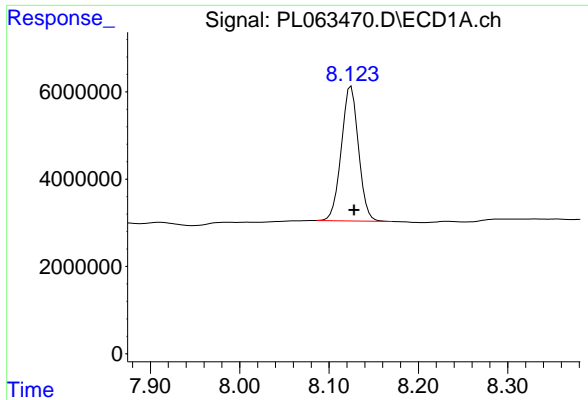
#1 Tetrachloro-m-xylene
 R.T.: 3.949 min
 Delta R.T.: -0.001 min
 Response: 67599747
 Conc: 21.57 ng/ml



#8 Heptachlor epoxide
 R.T.: 0.000 min
 Exp R.T. : 5.102 min
 Response: 0
 Conc: N.D.



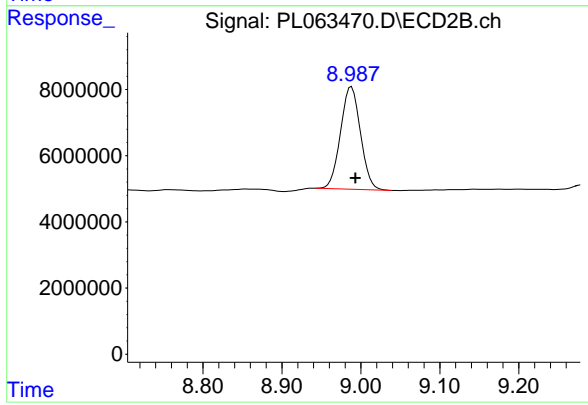
#8 Heptachlor epoxide
 R.T.: 5.821 min
 Delta R.T.: 0.009 min
 Response: 3233641
 Conc: 0.89 ng/ml



#28 Decachlorobiphenyl

R.T.: 8.125 min
Delta R.T.: -0.003 min
Response: 41132357
Conc: 20.42 ng/ml

Instrument :
ECD_L
ClientSampleId :
I.BLK



#28 Decachlorobiphenyl

R.T.: 8.988 min
Delta R.T.: -0.005 min
Response: 54362095
Conc: 21.59 ng/ml