

Data Path : Z:\pestpcbsrv\HPCHEM1\ECD\_L\Data\PL121120\  
 Data File : PL063475.D  
 Signal(s) : Signal #1: ECD1A.ch Signal #2: ECD2B.ch  
 Acq On : 10 Dec 2020 17:12  
 Operator : DD\AJ  
 Sample : L4972-01  
 Misc :  
 ALS Vial : 21 Sample Multiplier: 1

Instrument :  
 ECD\_L  
 ClientSampleId :  
 SU-01-120820

Integration File signal 1: autoint1.e  
 Integration File signal 2: autoint2.e  
 Quant Time: Dec 11 04:57:15 2020  
 Quant Method : Z:\pestpcbsrv\HPCHEM1\ECD\_L\methods\PL121020.M  
 Quant Title : GC Extractables  
 QLast Update : Thu Dec 10 15:57:40 2020  
 Response via : Initial Calibration  
 Integrator: ChemStation

Volume Inj. : 1 µl  
 Signal #1 Phase : ZB-MR2 Signal #2 Phase: ZB-MR1  
 Signal #1 Info : 30M x 0.32mm x0.2 Signal #2 Info : 30M x 0.32mm x0.5µm

| Compound                    | RT#1  | RT#2   | Resp#1   | Resp#2   | ng/ml  | ng/ml   |
|-----------------------------|-------|--------|----------|----------|--------|---------|
| System Monitoring Compounds |       |        |          |          |        |         |
| 1) SA Tetrachlo...          | 3.408 | 3.949  | 21712846 | 37555435 | 12.759 | 11.983  |
| 28) SA Decachlor...         | 8.123 | 8.988  | 20668500 | 29013009 | 10.263 | 11.521  |
| Target Compounds            |       |        |          |          |        |         |
| 6) B beta-BHC               | 0.000 | 4.818f | 0        | 1271008  | N.D.   | 0.640 # |
| 12) B 4,4'-DDE              | 5.547 | 6.274  | 3923373  | 8073016  | 2.310  | 2.305   |
| 17) MA 4,4'-DDT             | 0.000 | 7.064  | 0        | 4639869  | N.D.   | 1.815 # |

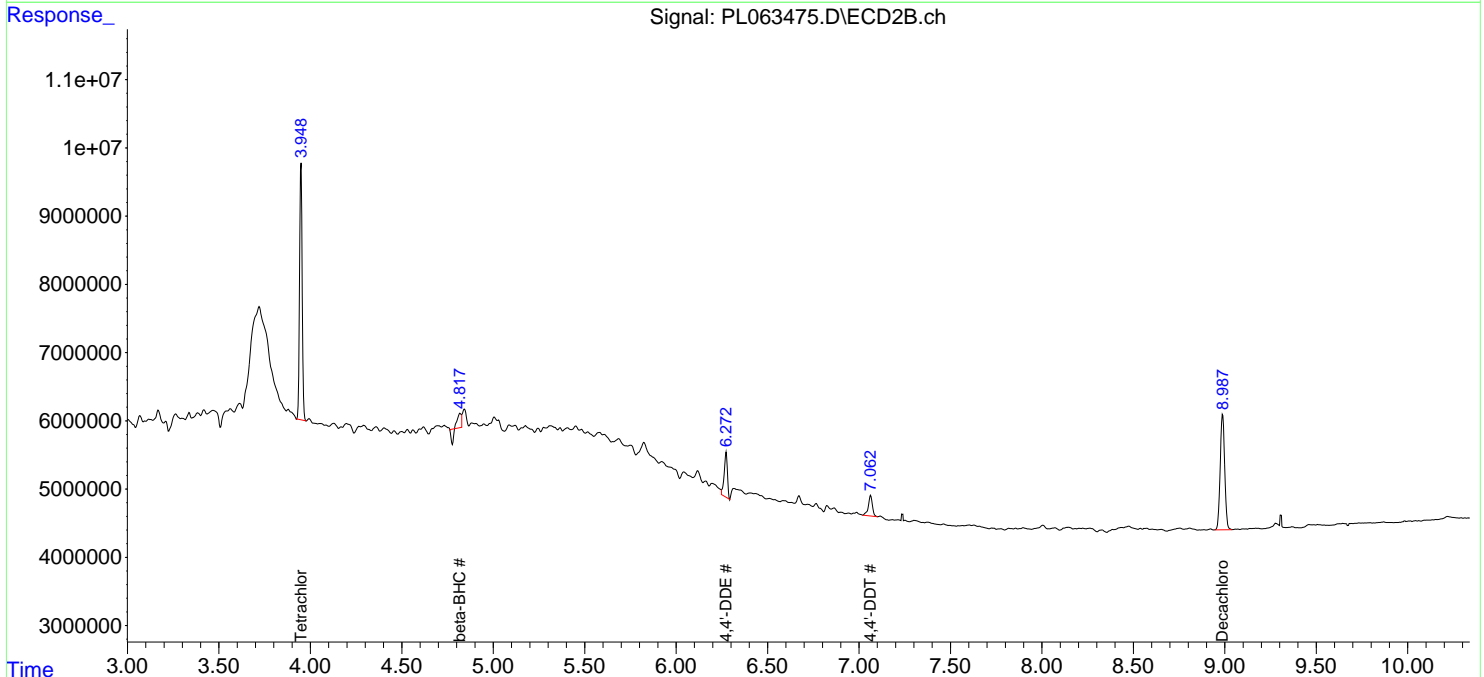
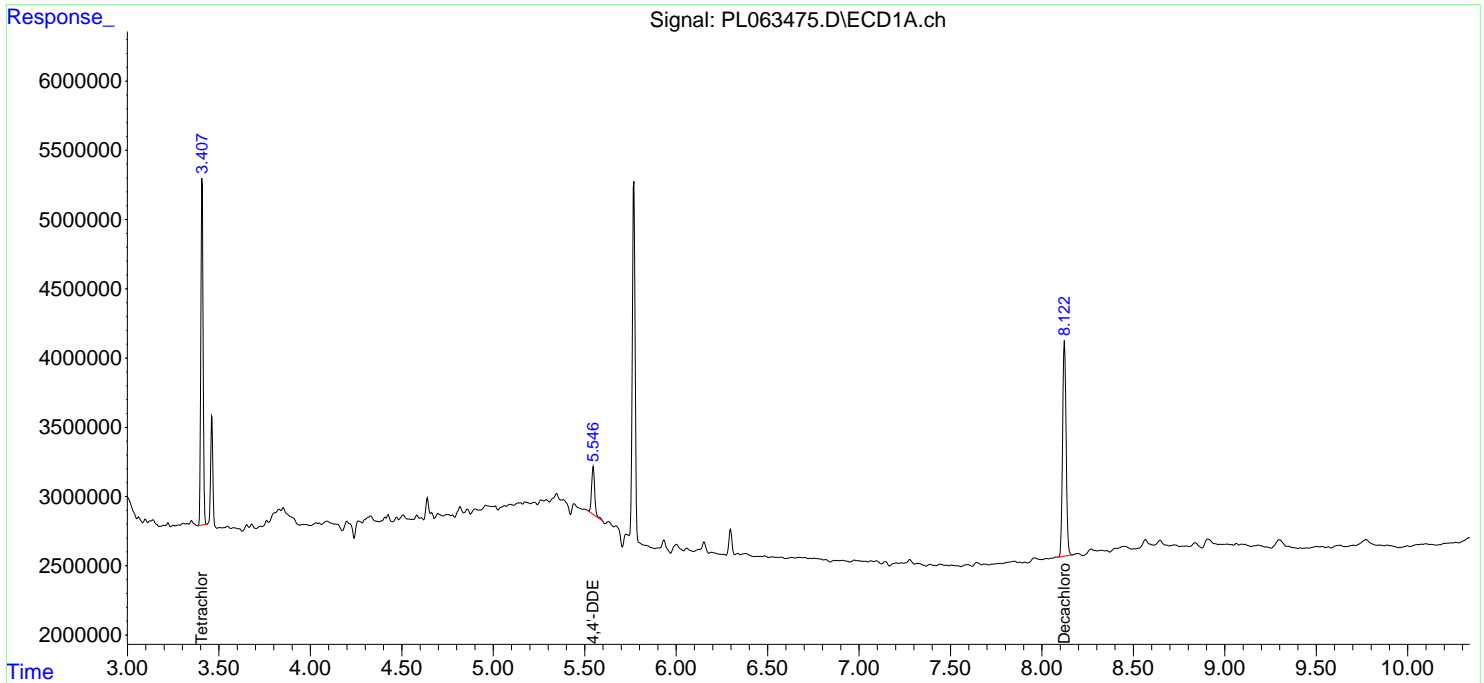
(f)=RT Delta > 1/2 Window (#)=Amounts differ by > 25% (m)=manual int.

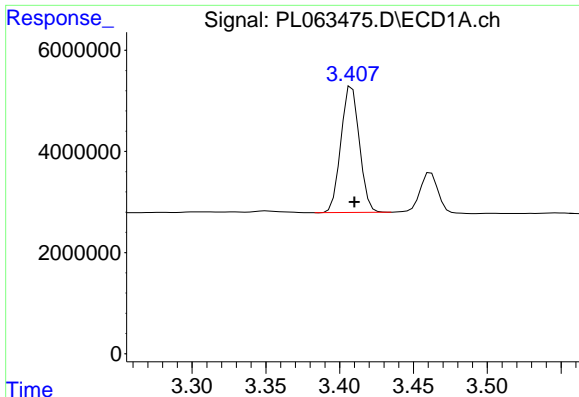
Data Path : Z:\pestpcbsrv\HPCHEM1\ECD\_L\Data\PL121120\  
 Data File : PL063475.D  
 Signal(s) : Signal #1: ECD1A.ch Signal #2: ECD2B.ch  
 Acq On : 10 Dec 2020 17:12  
 Operator : DD\AJ  
 Sample : L4972-01  
 Misc :  
 ALS Vial : 21 Sample Multiplier: 1

Instrument :  
 ECD\_L  
 ClientSampled :  
 SU-01-120820

Integration File signal 1: autoint1.e  
 Integration File signal 2: autoint2.e  
 Quant Time: Dec 11 04:57:15 2020  
 Quant Method : Z:\pestpcbsrv\HPCHEM1\ECD\_L\methods\PL121020.M  
 Quant Title : GC Extractables  
 QLast Update : Thu Dec 10 15:57:40 2020  
 Response via : Initial Calibration  
 Integrator: ChemStation

Volume Inj. : 1 µl  
 Signal #1 Phase : ZB-MR2 Signal #2 Phase: ZB-MR1  
 Signal #1 Info : 30M x 0.32mm x0.2 Signal #2 Info : 30M x 0.32mm x0.5µm

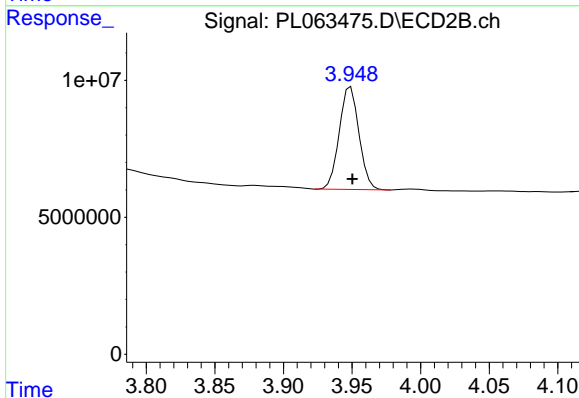




#1 Tetrachloro-m-xylene

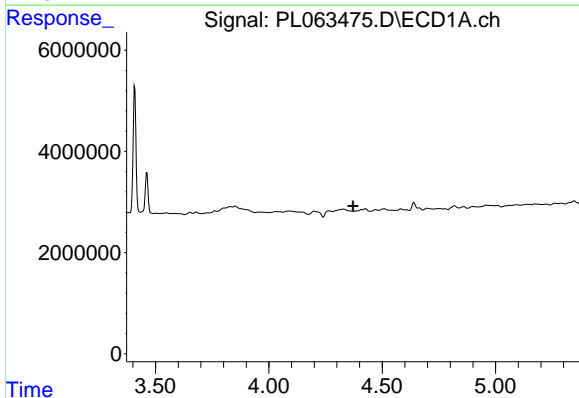
R.T.: 3.408 min  
 Delta R.T.: -0.002 min  
 Response: 21712846  
 Conc: 12.76 ng/ml

Instrument :  
 ECD\_L  
 ClientSampleId :  
 SU-01-120820



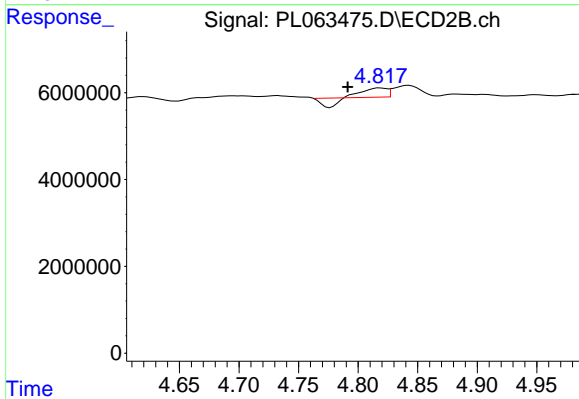
#1 Tetrachloro-m-xylene

R.T.: 3.949 min  
 Delta R.T.: -0.001 min  
 Response: 37555435  
 Conc: 11.98 ng/ml



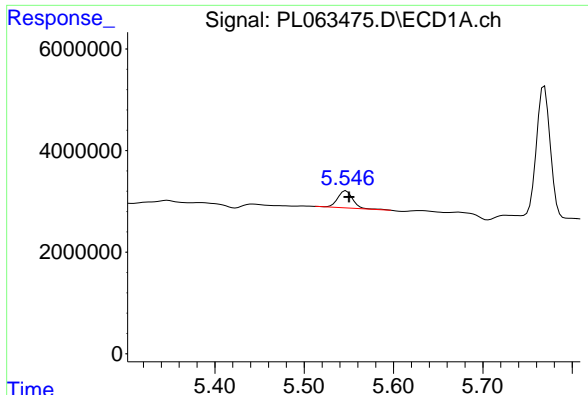
#6 beta-BHC

R.T.: 0.000 min  
 Exp R.T. : 4.372 min  
 Response: 0  
 Conc: N.D.



#6 beta-BHC

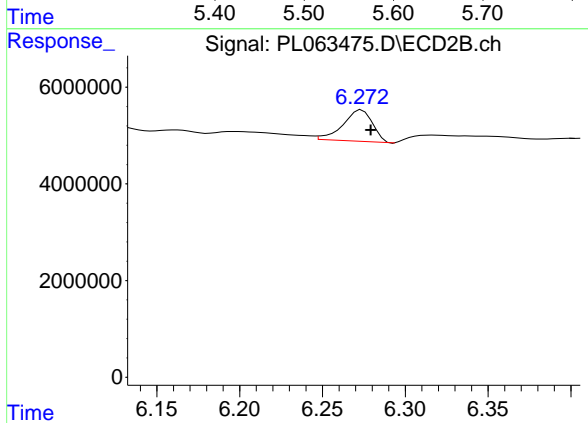
R.T.: 4.818 min  
 Delta R.T.: 0.027 min  
 Response: 1271008  
 Conc: 0.64 ng/ml



#12 4,4'-DDE

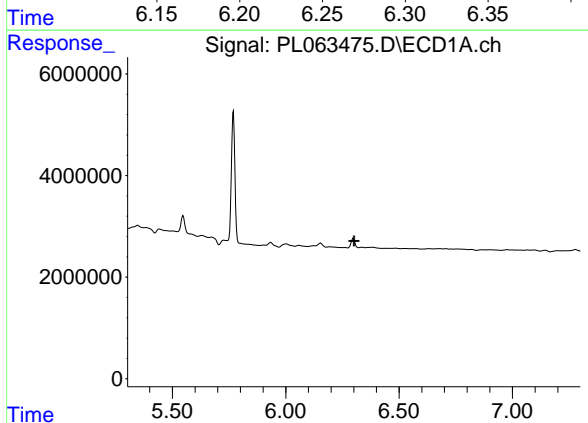
R.T.: 5.547 min  
 Delta R.T.: -0.003 min  
 Response: 3923373  
 Conc: 2.31 ng/ml

Instrument :  
 ECD\_L  
 ClientSampled :  
 SU-01-120820



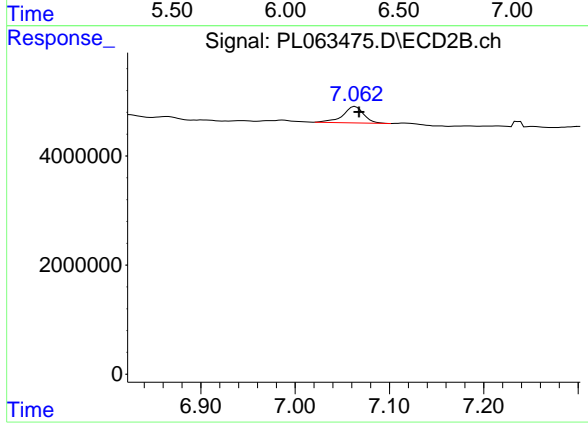
#12 4,4'-DDE

R.T.: 6.274 min  
 Delta R.T.: -0.005 min  
 Response: 8073016  
 Conc: 2.31 ng/ml



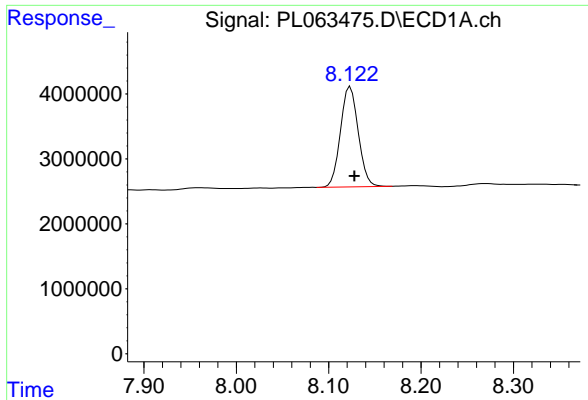
#17 4,4'-DDT

R.T.: 0.000 min  
 Exp R.T. : 6.301 min  
 Response: 0  
 Conc: N.D.



#17 4,4'-DDT

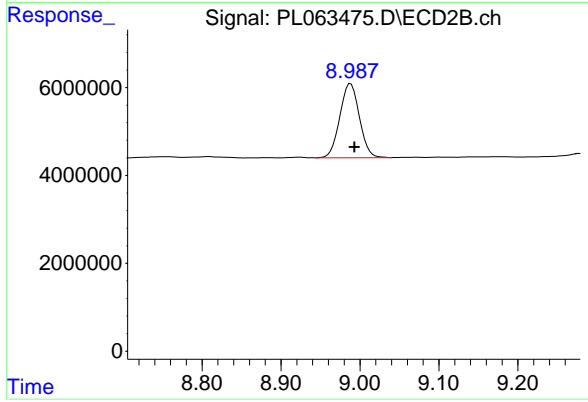
R.T.: 7.064 min  
 Delta R.T.: -0.004 min  
 Response: 4639869  
 Conc: 1.81 ng/ml



#28 Decachlorobiphenyl

R.T.: 8.123 min  
Delta R.T.: -0.005 min  
Response: 20668500  
Conc: 10.26 ng/ml

Instrument :  
ECD\_L  
ClientSampleId :  
SU-01-120820



#28 Decachlorobiphenyl

R.T.: 8.988 min  
Delta R.T.: -0.005 min  
Response: 29013009  
Conc: 11.52 ng/ml