

Data Path : Z:\pestpcbsrv\HPCHEM1\ECD_L\Data\PL121125\
 Data File : PL097838.D
 Signal(s) : Signal #1: ECD1A.ch Signal #2: ECD2B.ch
 Acq On : 11 Dec 2025 11:10
 Operator : AR\AJ
 Sample : HEXANE
 Misc :
 ALS Vial : 1 Sample Multiplier: 1

Instrument :
 ECD_L
 ClientSampleId :

Integration File signal 1: autoint1.e
 Integration File signal 2: autoint2.e
 Quant Time: Dec 12 03:09:23 2025
 Quant Method : Z:\pestpcbsrv\HPCHEM1\ECD_L\methods\PL120925.M
 Quant Title : GC Extractables
 QLast Update : Tue Dec 09 14:16:16 2025
 Response via : Initial Calibration
 Integrator: ChemStation

Volume Inj. : 1 µl
 Signal #1 Phase : ZB-MR1 Signal #2 Phase: ZB-MR2
 Signal #1 Info : 30M x 0.32mm x0.5 Signal #2 Info : 30M x 0.32mm x0.25µm

Compound	RT#1	RT#2	Resp#1	Resp#2	ng/ml	ng/ml
----------	------	------	--------	--------	-------	-------

System Monitoring Compounds

Target Compounds

8) B	Heptachlo...	5.619	0.000	94860349	0	14.258	N.D.	#
10) B	gamma-Chl...	5.874	0.000	9269153	0	1.428	N.D.	#
14) MA	Endrin	0.000	5.680	0	60016998	N.D.	7.182	#
15) B	Endosulfa...	6.705	5.965	2244154	8394240	0.439	1.014	#
16) A	4,4'-DDD	6.623	0.000	9668553	0	2.087	N.D.	#
23)	Chlordane-1	4.650	0.000	2003204	0	8.526	N.D.	#
24)	Chlordane-2	0.000	4.373	0	42114913	N.D.	137.013	#
25)	Chlordane-3	5.874	0.000	9269153	0	10.505	N.D.	#
27)	Chlordane-5	0.000	5.965	0	8394240	N.D.	25.517	#

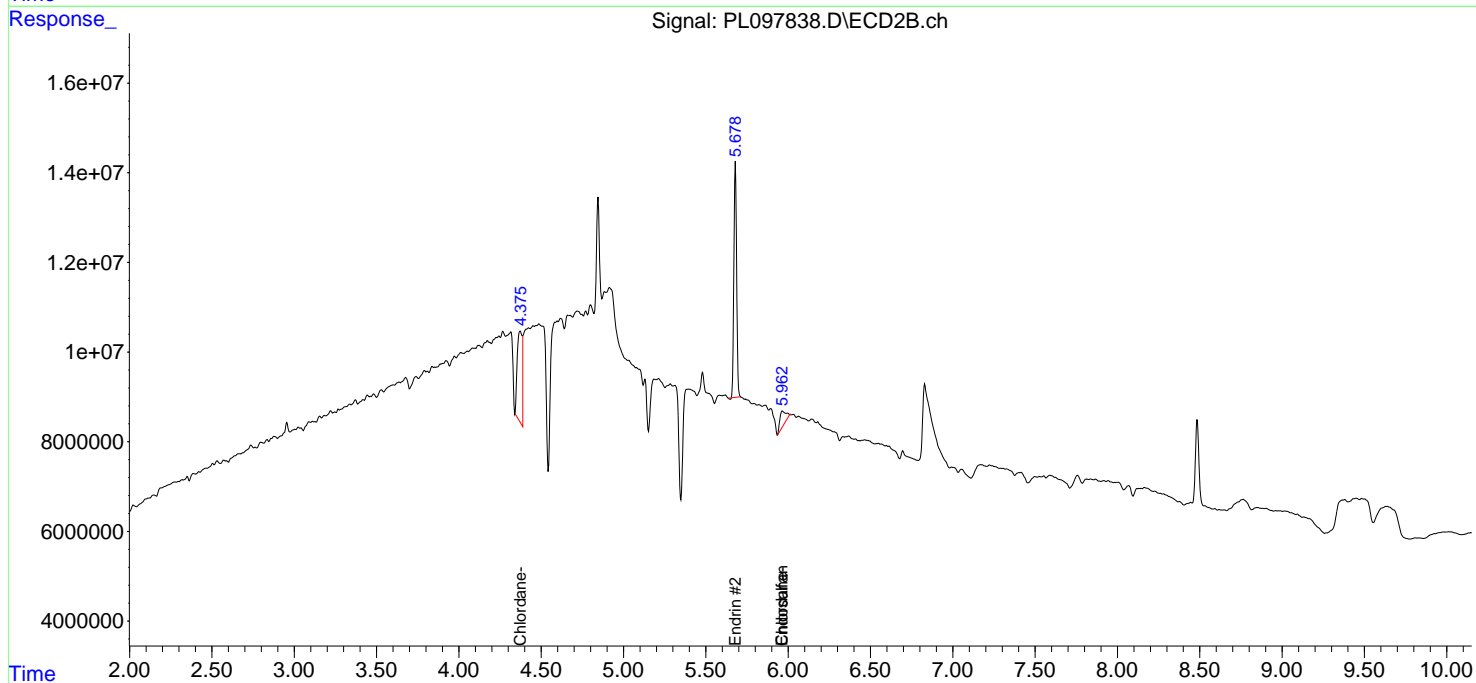
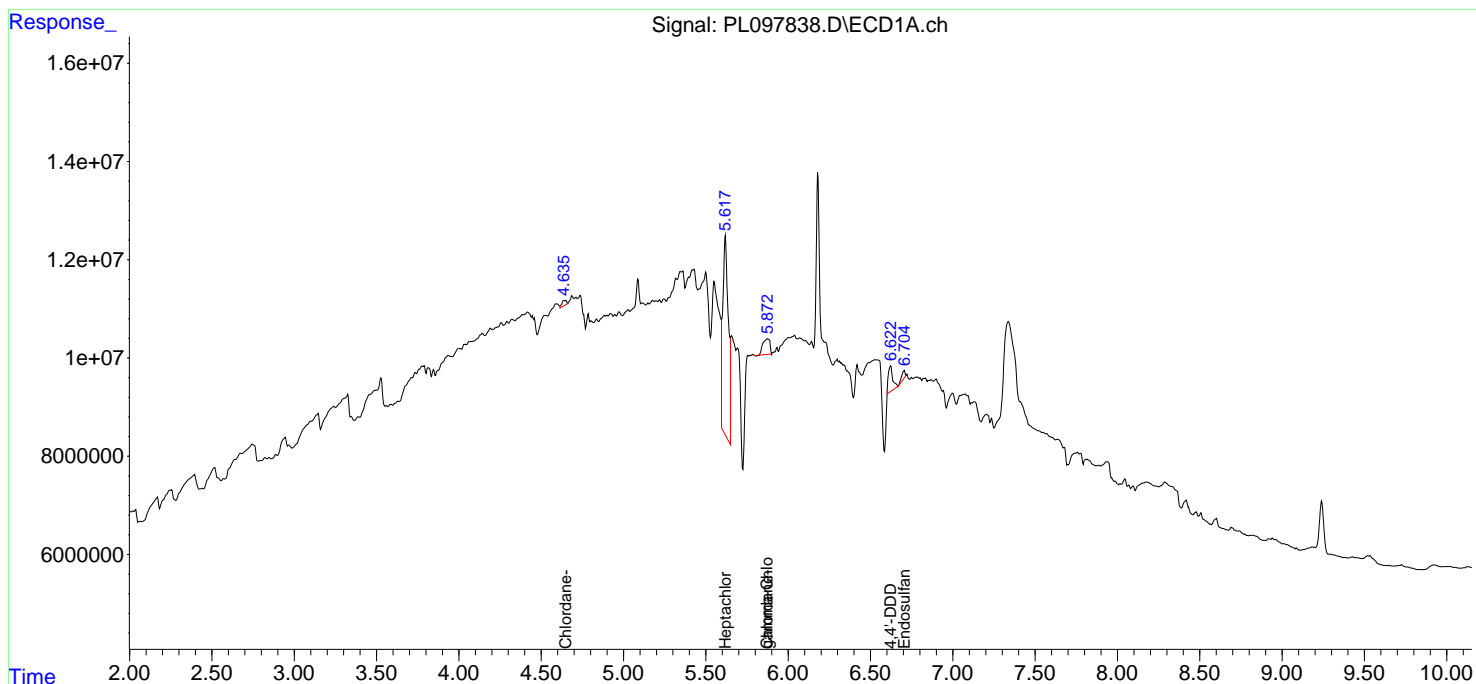
(f)=RT Delta > 1/2 Window (#)=Amounts differ by > 25% (m)=manual int.

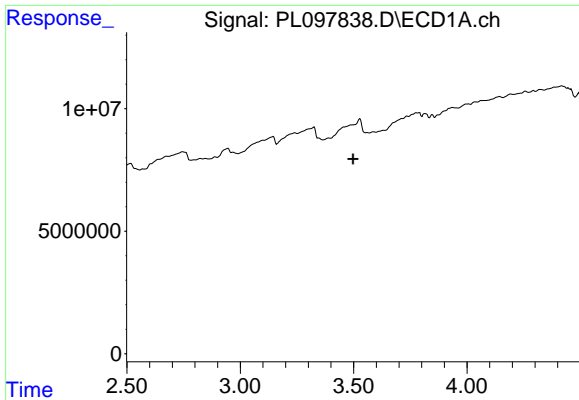
Data Path : Z:\pestpcbsrv\HPCHEM1\ECD_L\Data\PL121125\
 Data File : PL097838.D
 Signal(s) : Signal #1: ECD1A.ch Signal #2: ECD2B.ch
 Acq On : 11 Dec 2025 11:10
 Operator : AR\AJ
 Sample : HEXANE
 Misc :
 ALS Vial : 1 Sample Multiplier: 1

Instrument :
 ECD_L
 ClientSampleId :

Integration File signal 1: autoint1.e
 Integration File signal 2: autoint2.e
 Quant Time: Dec 12 03:09:23 2025
 Quant Method : Z:\pestpcbsrv\HPCHEM1\ECD_L\methods\PL120925.M
 Quant Title : GC Extractables
 QLast Update : Tue Dec 09 14:16:16 2025
 Response via : Initial Calibration
 Integrator: ChemStation

Volume Inj. : 1 µl
 Signal #1 Phase : ZB-MR1 Signal #2 Phase: ZB-MR2
 Signal #1 Info : 30M x 0.32mm x0.5 Signal #2 Info : 30M x 0.32mm x0.25µm

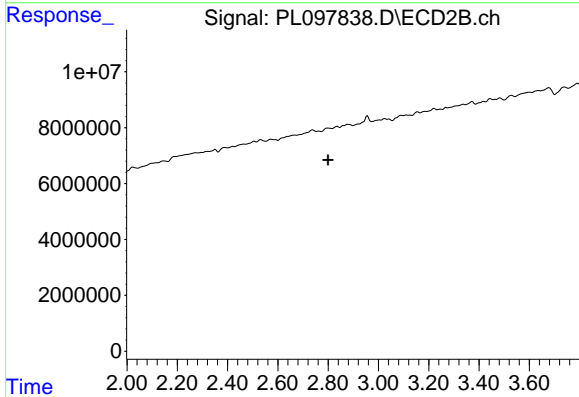




#1 Tetrachloro-m-xylene

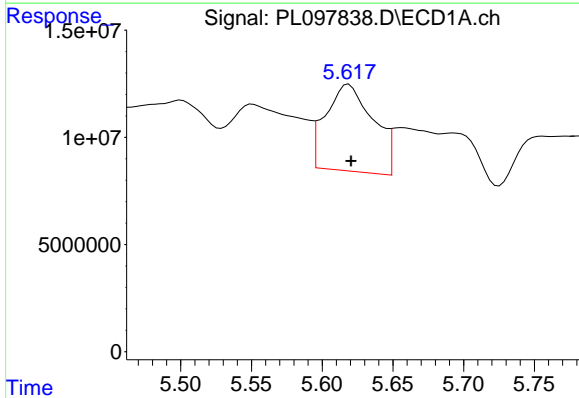
R.T.: 0.000 min
 Exp R.T.: 3.498 min
 Response: 0
 Conc: N.D.

Instrument :
 ECD_L
 ClientSampleId :



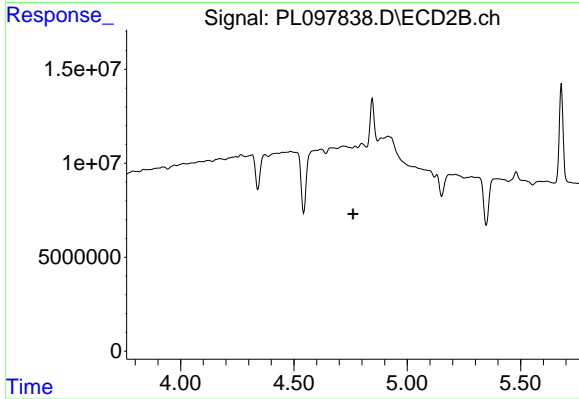
#1 Tetrachloro-m-xylene

R.T.: 0.000 min
 Exp R.T.: 2.800 min
 Response: 0
 Conc: N.D.



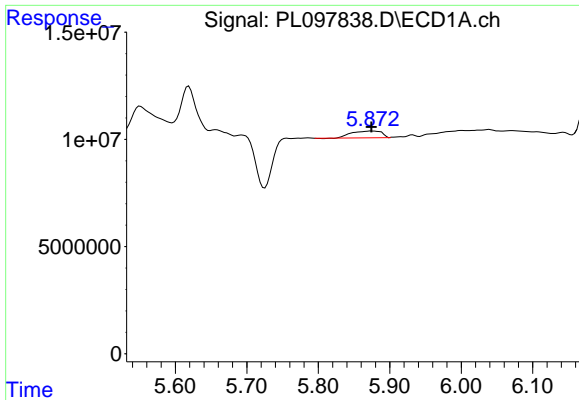
#8 Heptachlor epoxide

R.T.: 5.619 min
 Delta R.T.: -0.002 min
 Response: 94860349
 Conc: 14.26 ng/ml



#8 Heptachlor epoxide

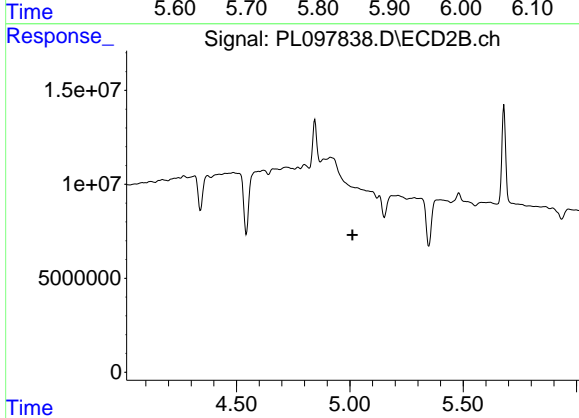
R.T.: 0.000 min
 Exp R.T.: 4.761 min
 Response: 0
 Conc: N.D.



#10 gamma-Chlordane

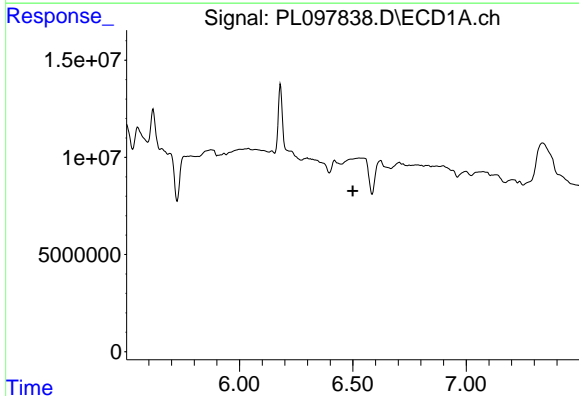
R.T.: 5.874 min
 Delta R.T.: 0.000 min
 Response: 9269153
 Conc: 1.43 ng/ml

Instrument :
 ECD_L
 ClientSampleId :



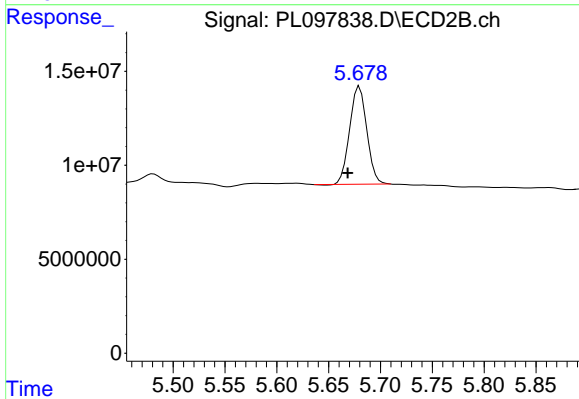
#10 gamma-Chlordane

R.T.: 0.000 min
 Exp R.T. : 5.012 min
 Response: 0
 Conc: N.D.



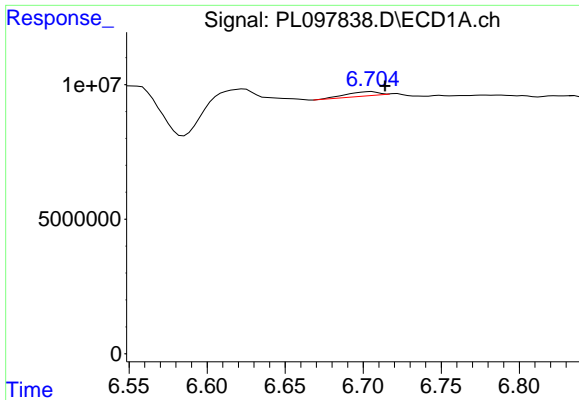
#14 Endrin

R.T.: 0.000 min
 Exp R.T. : 6.500 min
 Response: 0
 Conc: N.D.



#14 Endrin

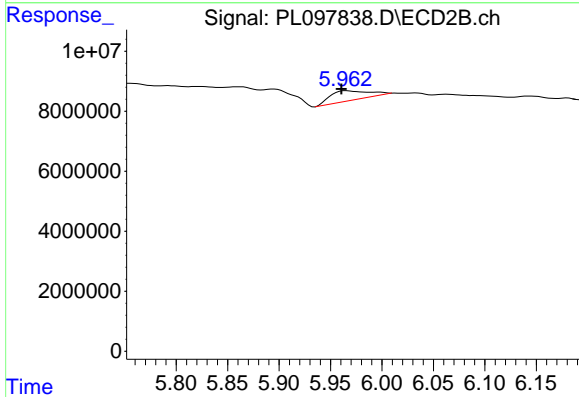
R.T.: 5.680 min
 Delta R.T.: 0.011 min
 Response: 60016998
 Conc: 7.18 ng/ml



#15 Endosulfan II

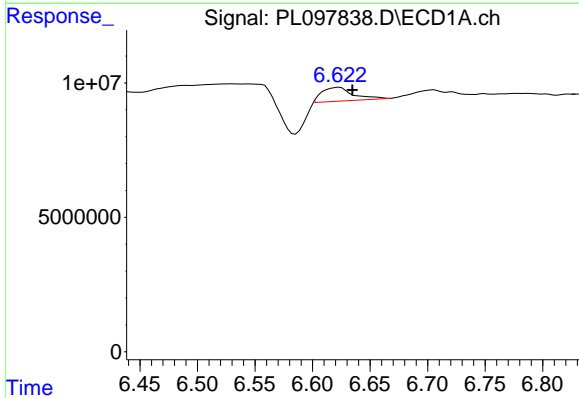
R.T.: 6.705 min
 Delta R.T.: -0.009 min
 Response: 2244154
 Conc: 0.44 ng/ml

Instrument :
 ECD_L
 ClientSampleId :



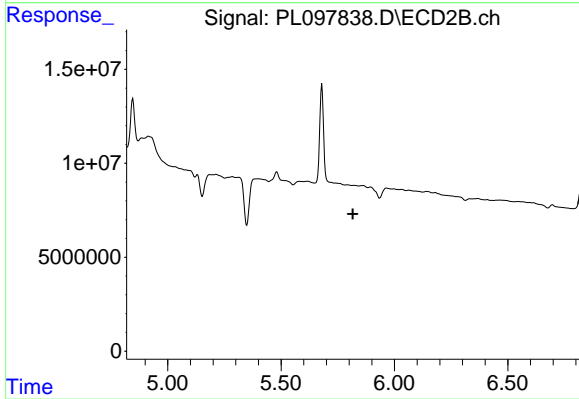
#15 Endosulfan II

R.T.: 5.965 min
 Delta R.T.: 0.004 min
 Response: 8394240
 Conc: 1.01 ng/ml



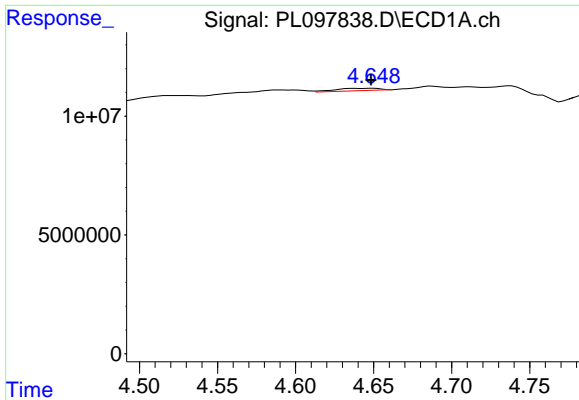
#16 4,4'-DDD

R.T.: 6.623 min
 Delta R.T.: -0.011 min
 Response: 9668553
 Conc: 2.09 ng/ml



#16 4,4'-DDD

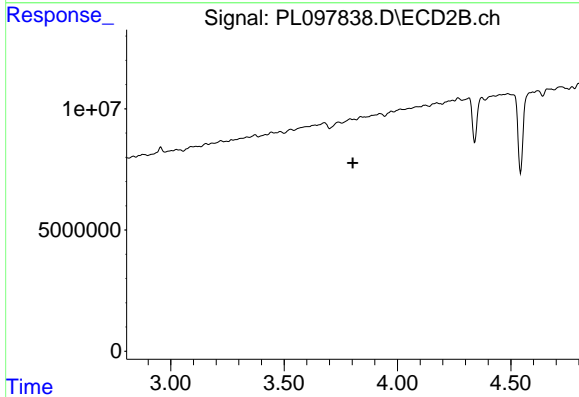
R.T.: 0.000 min
 Exp R.T. : 5.817 min
 Response: 0
 Conc: N.D.



#23 Chlordane-1

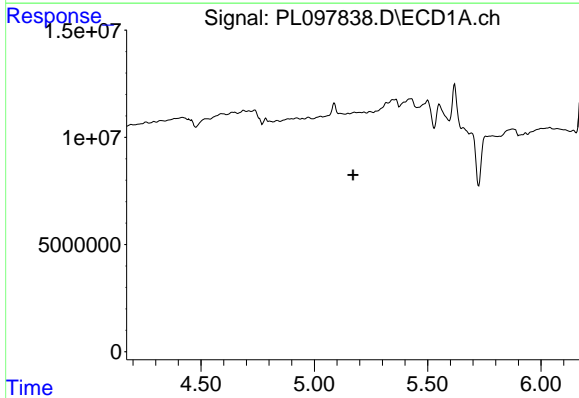
R.T.: 4.650 min
 Delta R.T.: 0.001 min
 Response: 2003204
 Conc: 8.53 ng/ml

Instrument :
 ECD_L
 ClientSampleId :



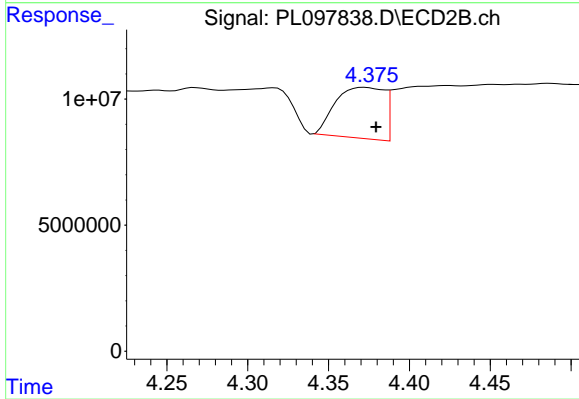
#23 Chlordane-1

R.T.: 0.000 min
 Exp R.T. : 3.802 min
 Response: 0
 Conc: N.D.



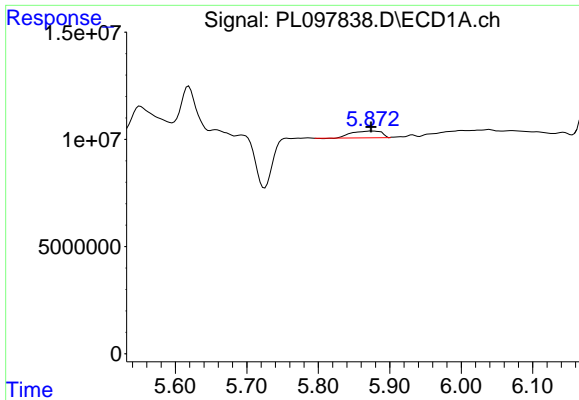
#24 Chlordane-2

R.T.: 0.000 min
 Exp R.T. : 5.172 min
 Response: 0
 Conc: N.D.



#24 Chlordane-2

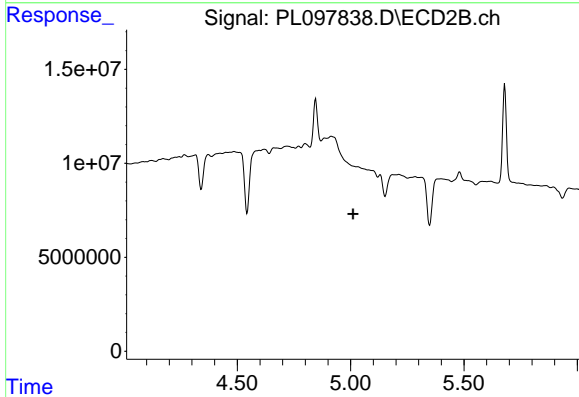
R.T.: 4.373 min
 Delta R.T.: -0.007 min
 Response: 42114913
 Conc: 137.01 ng/ml



#25 Chlordane-3

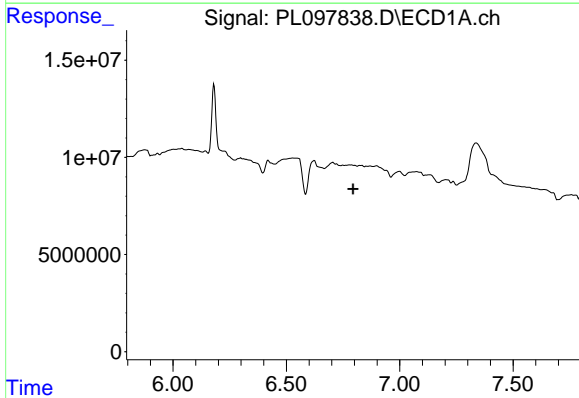
R.T.: 5.874 min
 Delta R.T.: 0.000 min
 Response: 9269153
 Conc: 10.51 ng/ml

Instrument :
 ECD_L
 ClientSampleId :



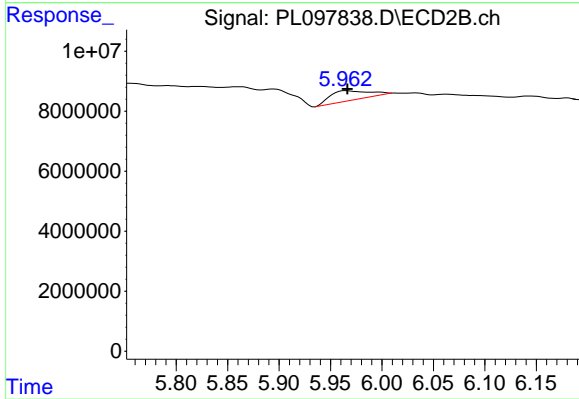
#25 Chlordane-3

R.T.: 0.000 min
 Exp R.T. : 5.011 min
 Response: 0
 Conc: N.D.



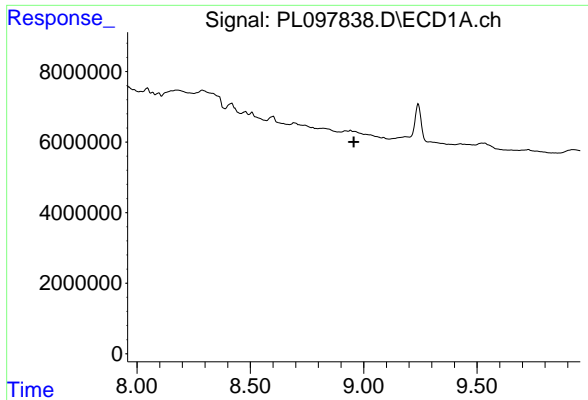
#27 Chlordane-5

R.T.: 0.000 min
 Exp R.T. : 6.794 min
 Response: 0
 Conc: N.D.



#27 Chlordane-5

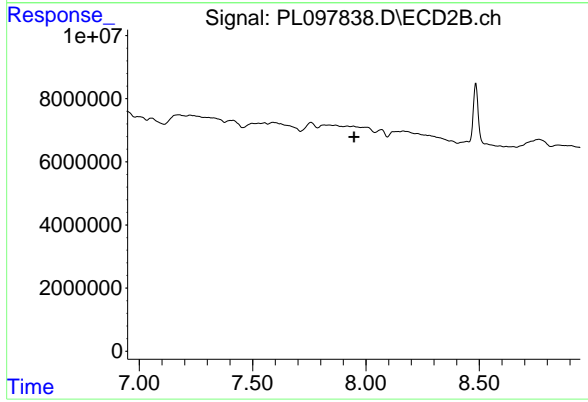
R.T.: 5.965 min
 Delta R.T.: -0.001 min
 Response: 8394240
 Conc: 25.52 ng/ml



#28 Decachlorobiphenyl

R.T.: 0.000 min
Exp R.T. : 8.957 min
Response: 0
Conc: N.D.

Instrument :
ECD_L
ClientSampleId :



#28 Decachlorobiphenyl

R.T.: 0.000 min
Exp R.T. : 7.948 min
Response: 0
Conc: N.D.