

Data Path : Z:\pestpcbsrv\HPCHEM1\ECD_L\Data\PL121125\
 Data File : PL097839.D
 Signal(s) : Signal #1: ECD1A.ch Signal #2: ECD2B.ch
 Acq On : 11 Dec 2025 11:23
 Operator : AR\AJ
 Sample : I.BLK
 Misc :
 ALS Vial : 2 Sample Multiplier: 1

Instrument :
 ECD_L
 ClientSampleId :

Integration File signal 1: autoint1.e
 Integration File signal 2: autoint2.e
 Quant Time: Dec 12 03:09:48 2025
 Quant Method : Z:\pestpcbsrv\HPCHEM1\ECD_L\methods\PL120925.M
 Quant Title : GC Extractables
 QLast Update : Tue Dec 09 14:16:16 2025
 Response via : Initial Calibration
 Integrator: ChemStation

Volume Inj. : 1 µl
 Signal #1 Phase : ZB-MR1 Signal #2 Phase: ZB-MR2
 Signal #1 Info : 30M x 0.32mm x0.5 Signal #2 Info : 30M x 0.32mm x0.25µm

Compound	RT#1	RT#2	Resp#1	Resp#2	ng/ml	ng/ml
System Monitoring Compounds						
1) SA Tetrachlo...	3.498	2.799	128.1E6	175.6E6	25.377	25.133
28) SA Decachlor...	8.962	7.951	95225713	163.7E6	25.063	24.899
Target Compounds						
8) B Heptachlo...	5.615	0.000	14291174	0	2.148	N.D. #
14) MA Endrin	0.000	5.681	0	10988036	N.D.	1.315 #

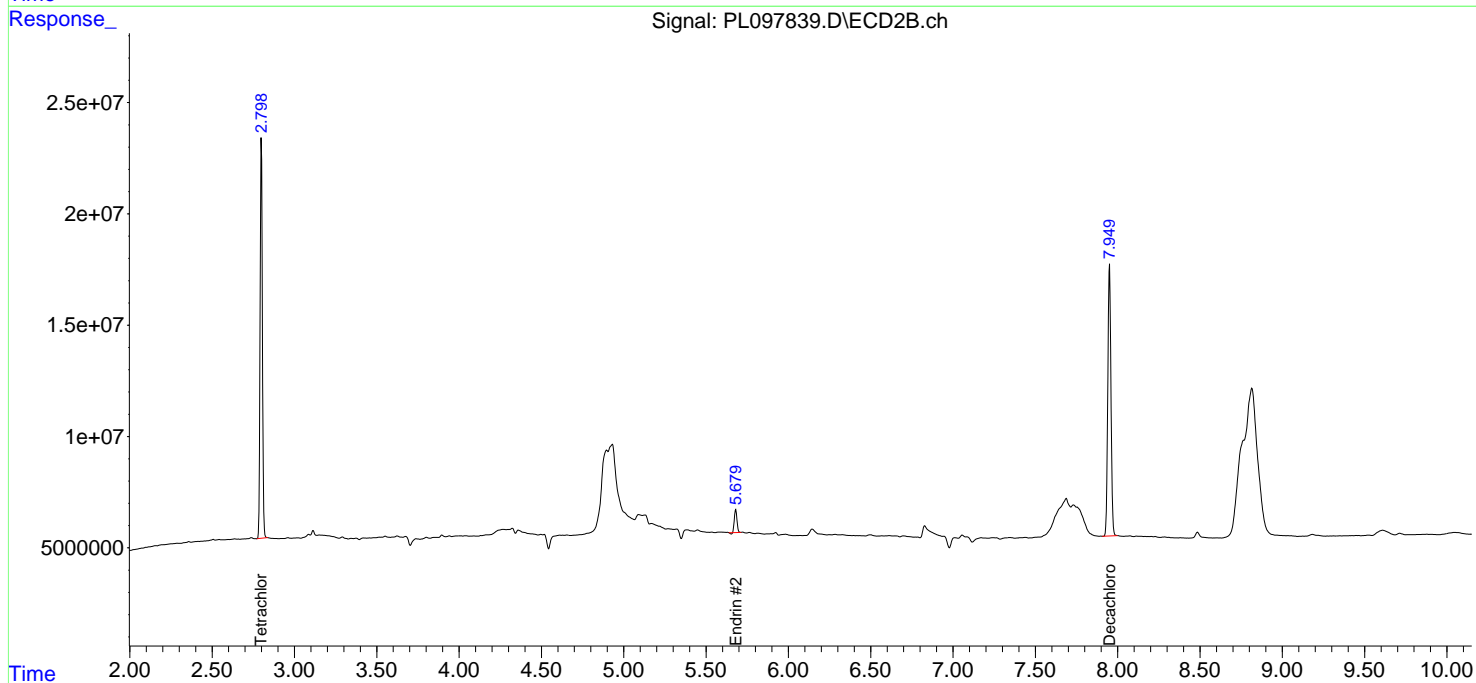
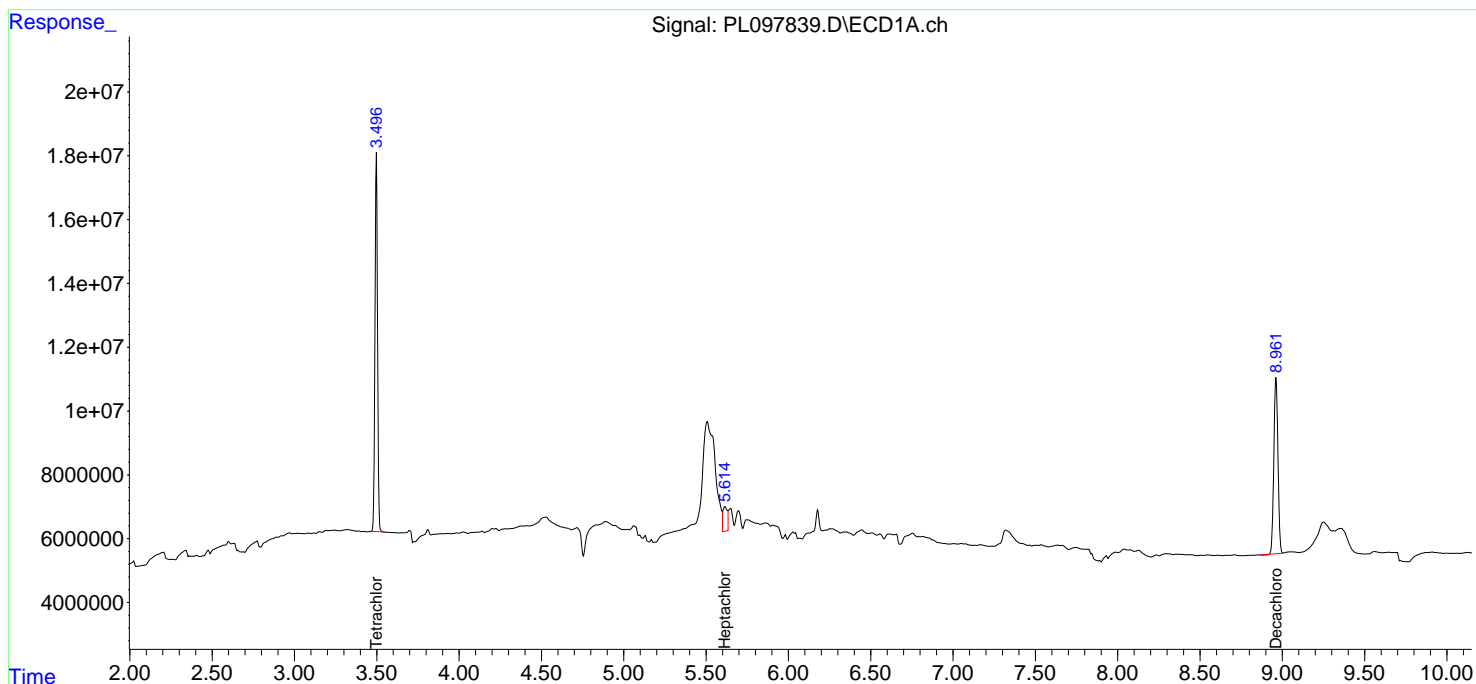
(f)=RT Delta > 1/2 Window (#)=Amounts differ by > 25% (m)=manual int.

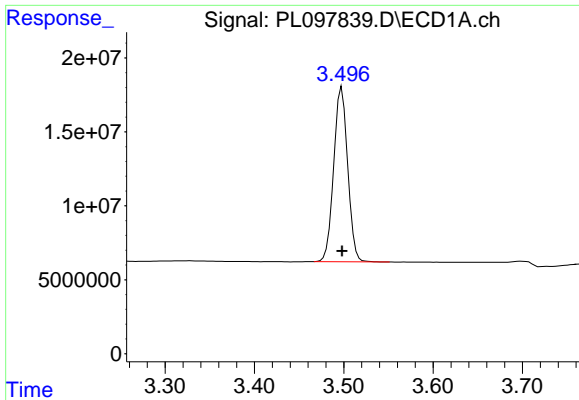
Data Path : Z:\pestpcbsrv\HPCHEM1\ECD_L\Data\PL121125\
Data File : PL097839.D
Signal(s) : Signal #1: ECD1A.ch Signal #2: ECD2B.ch
Acq On : 11 Dec 2025 11:23
Operator : AR\AJ
Sample : I.BLK
Misc :
ALS Vial : 2 Sample Multiplier: 1

Instrument :
ECD_L
ClientSampleId :

Integration File signal 1: autoint1.e
Integration File signal 2: autoint2.e
Quant Time: Dec 12 03:09:48 2025
Quant Method : Z:\pestpcbsrv\HPCHEM1\ECD_L\methods\PL120925.M
Quant Title : GC Extractables
QLast Update : Tue Dec 09 14:16:16 2025
Response via : Initial Calibration
Integrator: ChemStation

Volume Inj. : 1 µl
Signal #1 Phase : ZB-MR1 Signal #2 Phase: ZB-MR2
Signal #1 Info : 30M x 0.32mm x0.5 Signal #2 Info : 30M x 0.32mm x0.25µm

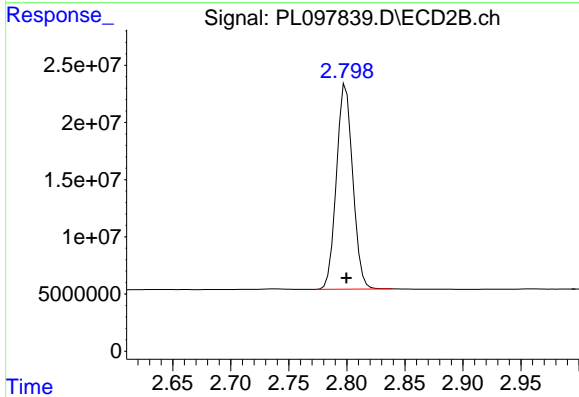




#1 Tetrachloro-m-xylene

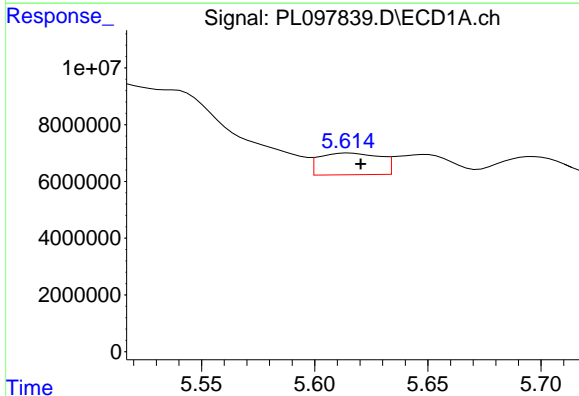
R.T.: 3.498 min
 Delta R.T.: 0.000 min
 Response: 128075546
 Conc: 25.38 ng/ml

Instrument :
 ECD_L
 ClientSampleId :



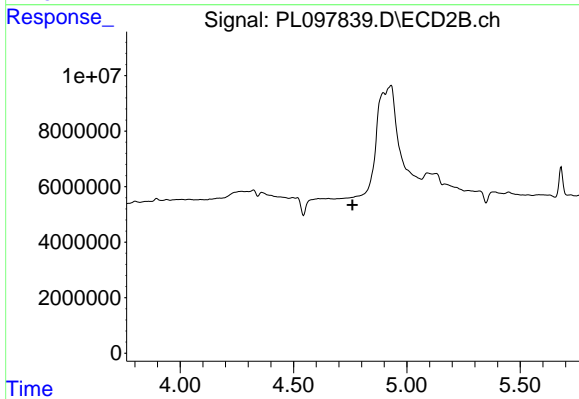
#1 Tetrachloro-m-xylene

R.T.: 2.799 min
 Delta R.T.: 0.000 min
 Response: 175557403
 Conc: 25.13 ng/ml



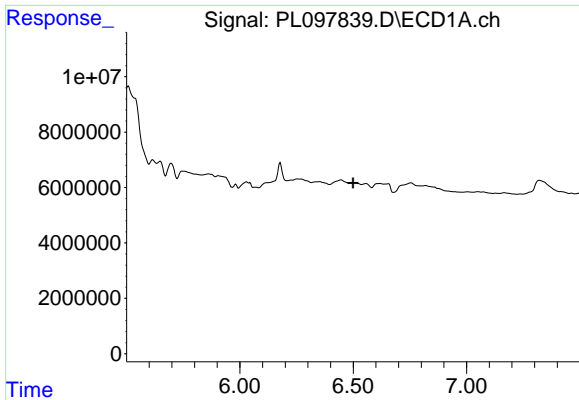
#8 Heptachlor epoxide

R.T.: 5.615 min
 Delta R.T.: -0.005 min
 Response: 14291174
 Conc: 2.15 ng/ml



#8 Heptachlor epoxide

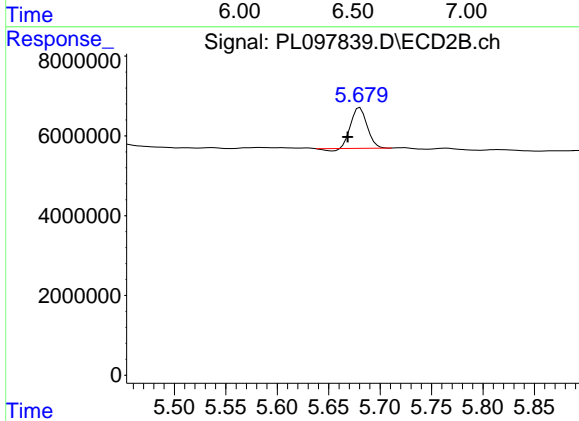
R.T.: 0.000 min
 Exp R.T. : 4.761 min
 Response: 0
 Conc: N.D.



#14 Endrin

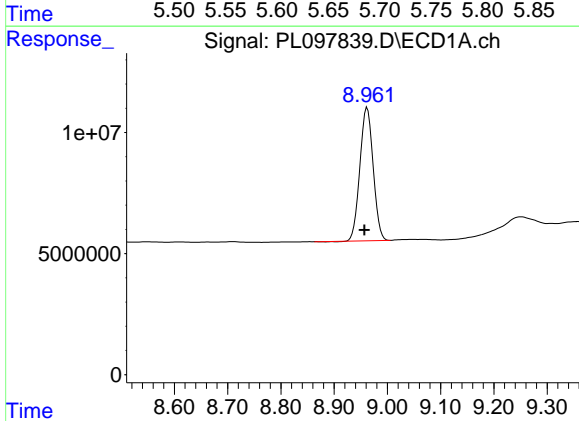
R.T.: 0.000 min
 Exp R.T.: 6.500 min
 Response: 0
 Conc: N.D.

Instrument :
 ECD_L
 ClientSampleId :



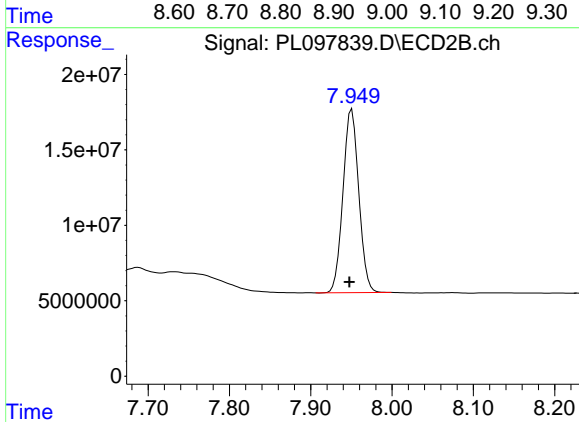
#14 Endrin

R.T.: 5.681 min
 Delta R.T.: 0.012 min
 Response: 10988036
 Conc: 1.31 ng/ml



#28 Decachlorobiphenyl

R.T.: 8.962 min
 Delta R.T.: 0.005 min
 Response: 95225713
 Conc: 25.06 ng/ml



#28 Decachlorobiphenyl

R.T.: 7.951 min
 Delta R.T.: 0.003 min
 Response: 163736532
 Conc: 24.90 ng/ml