

Data Path : Z:\pestpcbsrv\HPCHEM1\ECD\_L\Data\PL121125\  
 Data File : PL097840.D  
 Signal(s) : Signal #1: ECD1A.ch Signal #2: ECD2B.ch  
 Acq On : 11 Dec 2025 11:37  
 Operator : AR\AJ  
 Sample : PEM  
 Misc :  
 ALS Vial : 3 Sample Multiplier: 1

Instrument :  
 ECD\_L  
 ClientSampleId :

Integration File signal 1: autoint1.e  
 Integration File signal 2: autoint2.e  
 Quant Time: Dec 12 03:10:00 2025  
 Quant Method : Z:\pestpcbsrv\HPCHEM1\ECD\_L\methods\PL120925.M  
 Quant Title : GC Extractables  
 QLast Update : Tue Dec 09 14:16:16 2025  
 Response via : Initial Calibration  
 Integrator: ChemStation

Volume Inj. : 1 µl  
 Signal #1 Phase : ZB-MR2 Signal #2 Phase: ZB-MR2  
 Signal #1 Info : 30M x 0.32mm x0.5 Signal #2 Info : 30M x 0.32mm x0.25µm

Compound	RT#1	RT#2	Resp#1	Resp#2	ng/ml	ng/ml
-----						
System Monitoring Compounds						
1) SA Tetrachlo...	3.498	2.800	121.1E6	166.4E6	24.002	23.827
28) SA Decachlor...	8.961	7.950	88427115	158.5E6	23.273	24.100
Target Compounds						
2) A alpha-BHC	3.945	3.302	93309928	123.2E6	11.034	10.741
3) MA gamma-BHC...	4.273	3.633	89922367	117.7E6	11.217	10.945
6) B beta-BHC	4.462	3.930	38731079	52572428	11.568	11.339
8) B Heptachlo...	5.616	0.000	16515173	0	2.482	N.D. #
9) A Endosulfan I	0.000	5.102f	0	36353038	N.D.	3.568 #
11) B alpha-Chl...	0.000	5.102f	0	36353038	N.D.	3.545 #
14) MA Endrin	6.501	5.670	303.6E6	483.7E6	58.618	57.881
16) A 4,4'-DDD	6.637	5.818	6916851	14070268	1.493	1.876 #
17) MA 4,4'-DDT	6.949	6.070	554.8E6	881.3E6	115.815	114.886
18) B Endrin a...	0.000	6.144	0	9831265	N.D.	1.540 #
20) A Methoxychlor	7.423	6.642	651.0E6	990.8E6	258.643	237.084
21) B Endrin ke...	7.556	6.866	8543471	13677043	1.644	1.533
26) Chlordane-4	0.000	5.102f	0	36353038	N.D.	45.030 #
-----						

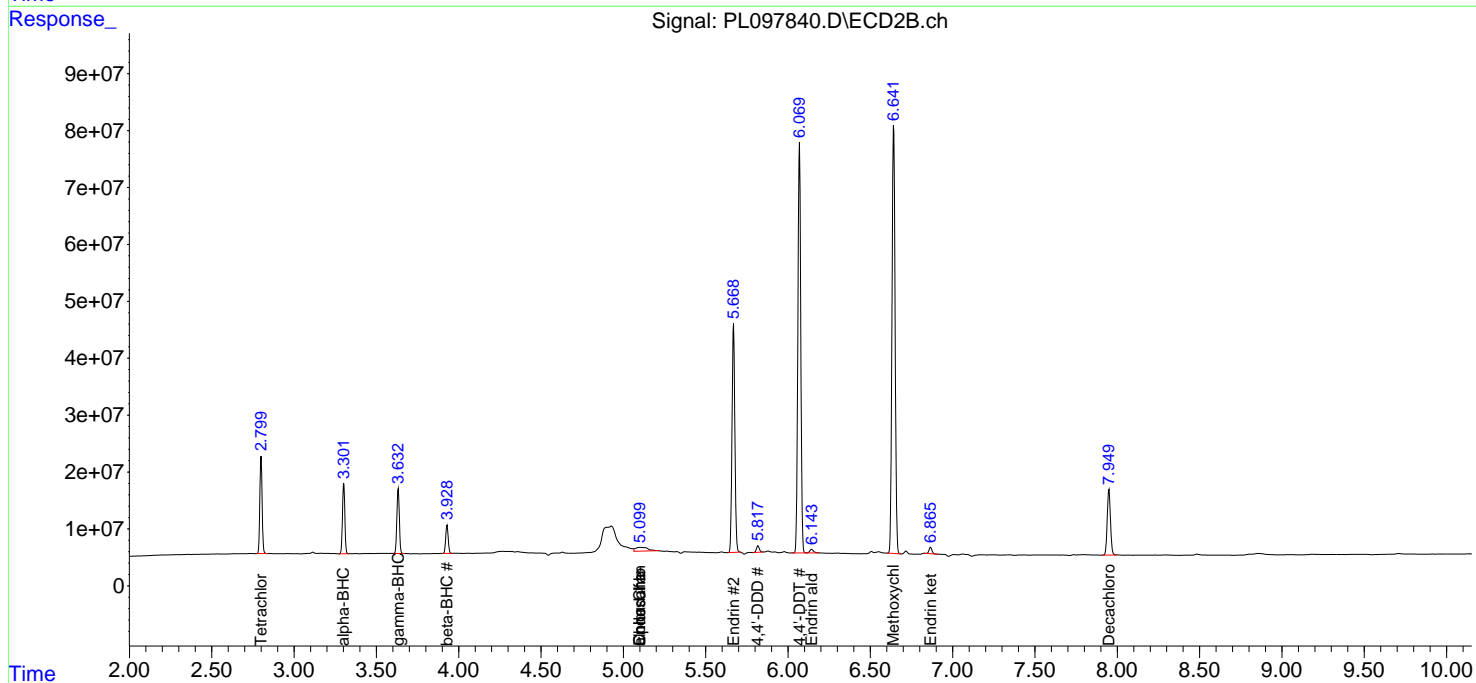
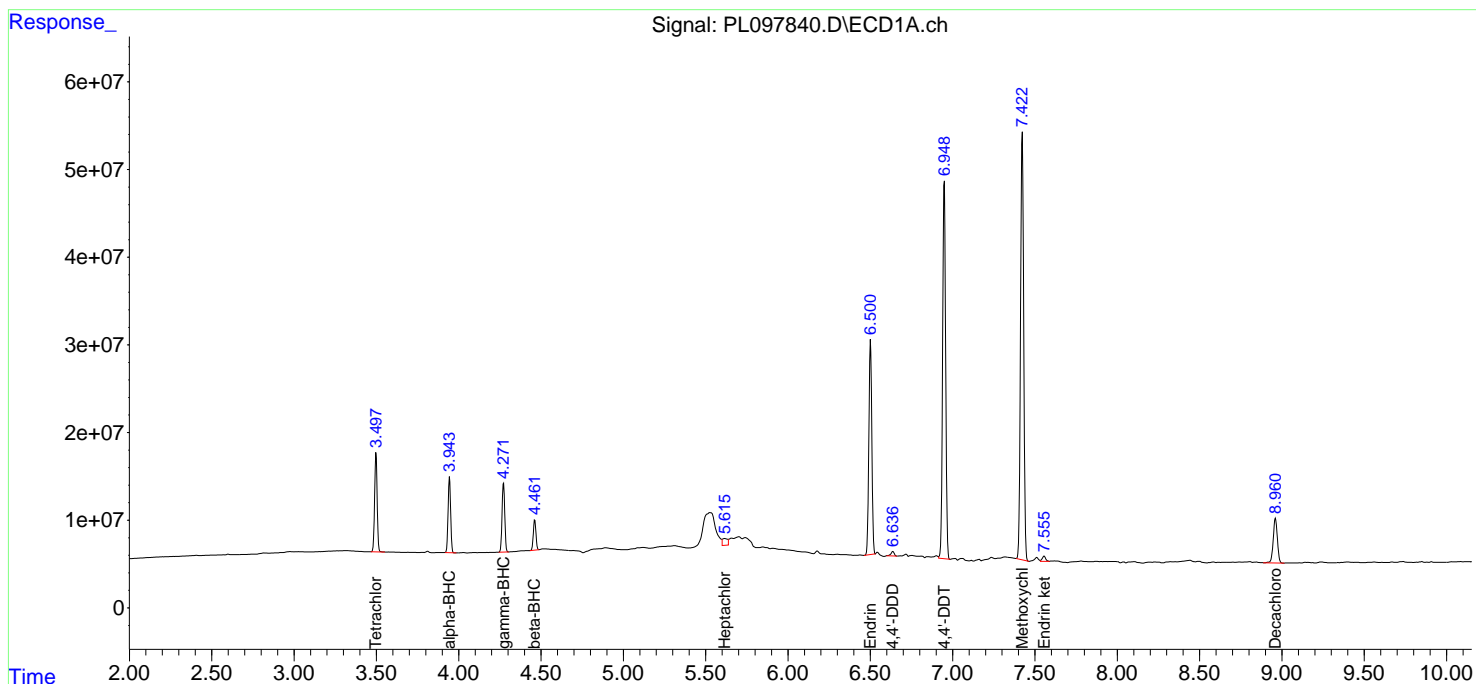
(f)=RT Delta > 1/2 Window (#)=Amounts differ by > 25% (m)=manual int.

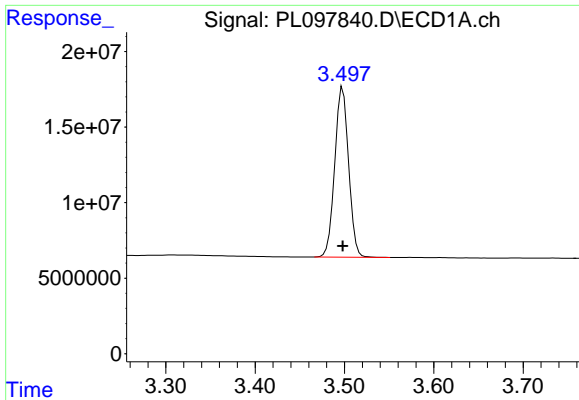
Data Path : Z:\pestpcbsrv\HPCHEM1\ECD\_L\Data\PL121125\  
 Data File : PL097840.D  
 Signal(s) : Signal #1: ECD1A.ch Signal #2: ECD2B.ch  
 Acq On : 11 Dec 2025 11:37  
 Operator : AR\AJ  
 Sample : PEM  
 Misc :  
 ALS Vial : 3 Sample Multiplier: 1

Instrument :  
 ECD\_L  
 ClientSampleId :

Integration File signal 1: autoint1.e  
 Integration File signal 2: autoint2.e  
 Quant Time: Dec 12 03:10:00 2025  
 Quant Method : Z:\pestpcbsrv\HPCHEM1\ECD\_L\methods\PL120925.M  
 Quant Title : GC Extractables  
 QLast Update : Tue Dec 09 14:16:16 2025  
 Response via : Initial Calibration  
 Integrator: ChemStation

Volume Inj. : 1 µl  
 Signal #1 Phase : ZB-MR1 Signal #2 Phase: ZB-MR2  
 Signal #1 Info : 30M x 0.32mm x0.5 Signal #2 Info : 30M x 0.32mm x0.25µm

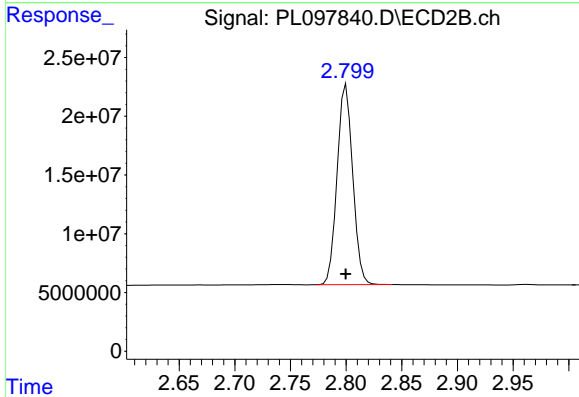




#1 Tetrachloro-m-xylene

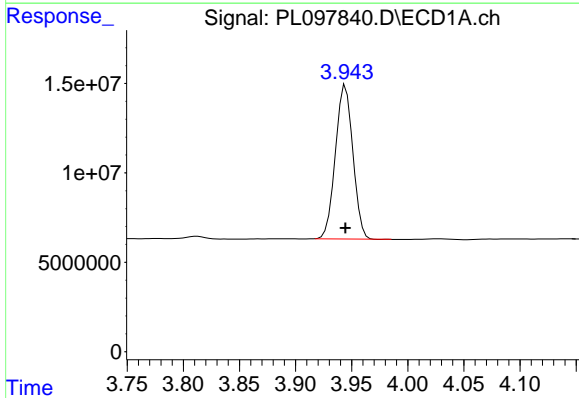
R.T.: 3.498 min  
 Delta R.T.: 0.000 min  
 Response: 121138703  
 Conc: 24.00 ng/ml

Instrument :  
 ECD\_L  
 ClientSampleId :



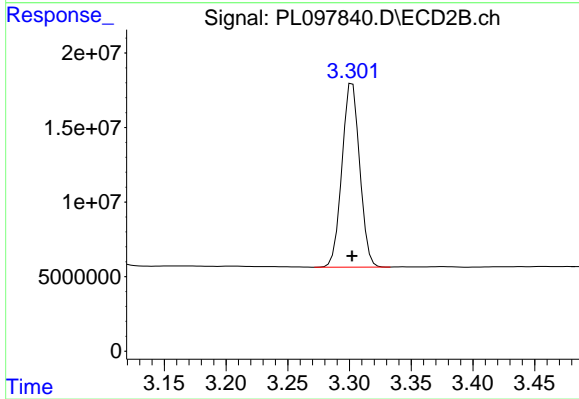
#1 Tetrachloro-m-xylene

R.T.: 2.800 min  
 Delta R.T.: 0.000 min  
 Response: 166439756  
 Conc: 23.83 ng/ml



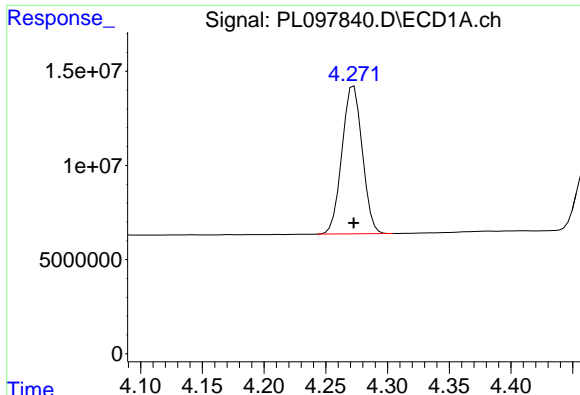
#2 alpha-BHC

R.T.: 3.945 min  
 Delta R.T.: 0.000 min  
 Response: 93309928  
 Conc: 11.03 ng/ml



#2 alpha-BHC

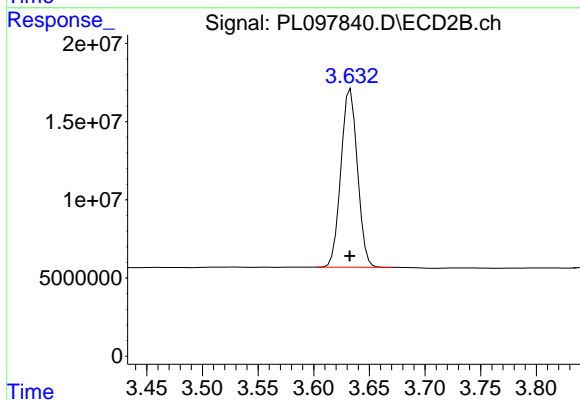
R.T.: 3.302 min  
 Delta R.T.: 0.000 min  
 Response: 123234567  
 Conc: 10.74 ng/ml



#3 gamma-BHC (Lindane)

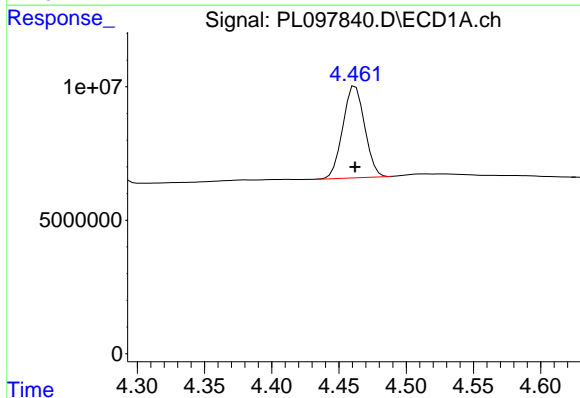
R.T.: 4.273 min  
 Delta R.T.: 0.000 min  
 Response: 89922367  
 Conc: 11.22 ng/ml

Instrument :  
 ECD\_L  
 ClientSampleId :



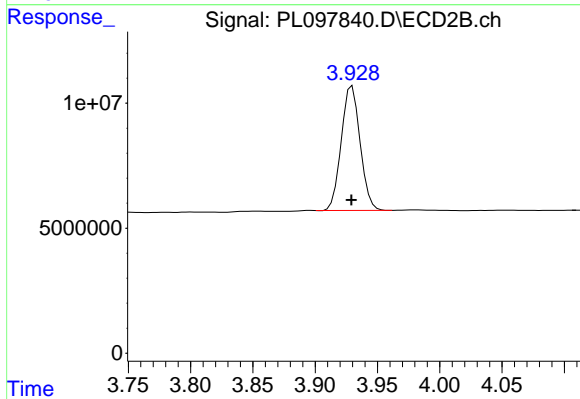
#3 gamma-BHC (Lindane)

R.T.: 3.633 min  
 Delta R.T.: 0.000 min  
 Response: 117725488  
 Conc: 10.95 ng/ml



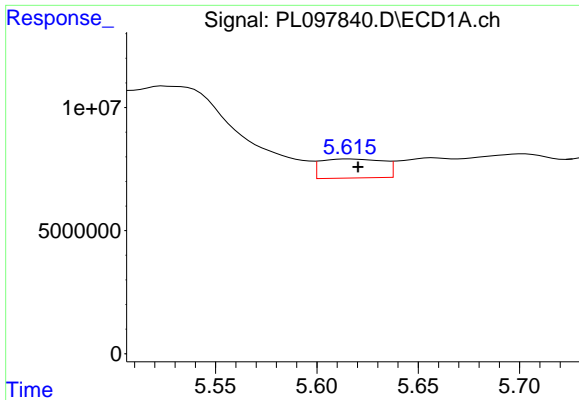
#6 beta-BHC

R.T.: 4.462 min  
 Delta R.T.: 0.000 min  
 Response: 38731079  
 Conc: 11.57 ng/ml



#6 beta-BHC

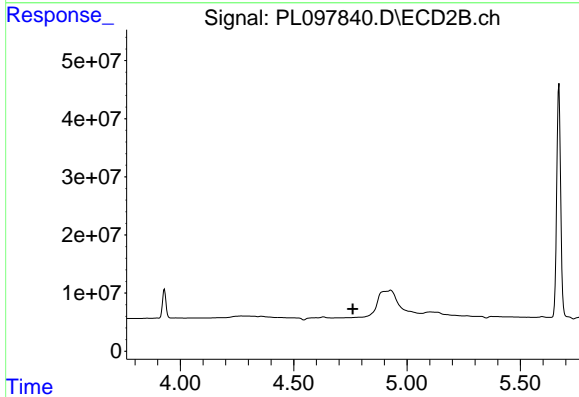
R.T.: 3.930 min  
 Delta R.T.: 0.000 min  
 Response: 52572428  
 Conc: 11.34 ng/ml



#8 Heptachlor epoxide

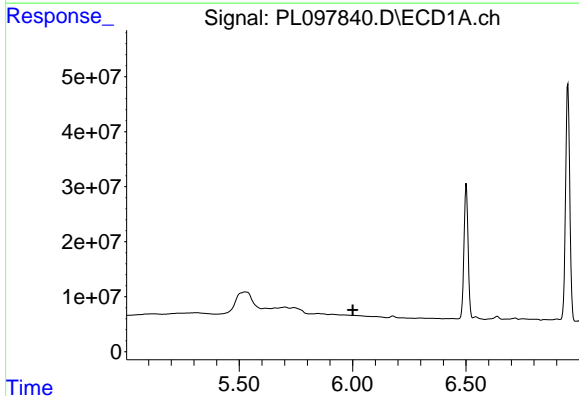
R.T.: 5.616 min  
 Delta R.T.: -0.004 min  
 Response: 16515173  
 Conc: 2.48 ng/ml

Instrument :  
 ECD\_L  
 ClientSampleId :



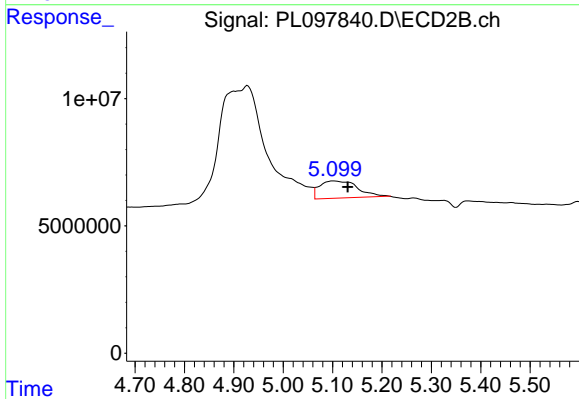
#8 Heptachlor epoxide

R.T.: 0.000 min  
 Exp R.T. : 4.761 min  
 Response: 0  
 Conc: N.D.



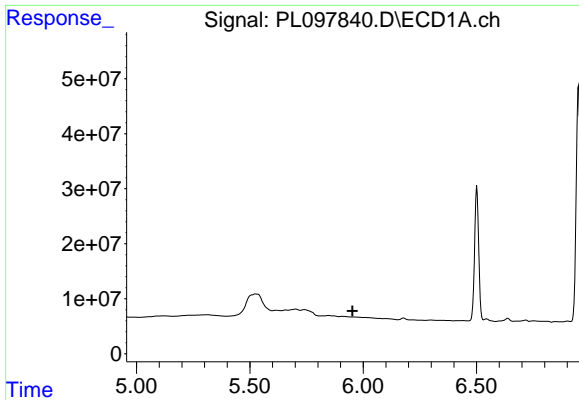
#9 Endosulfan I

R.T.: 0.000 min  
 Exp R.T. : 6.001 min  
 Response: 0  
 Conc: N.D.



#9 Endosulfan I

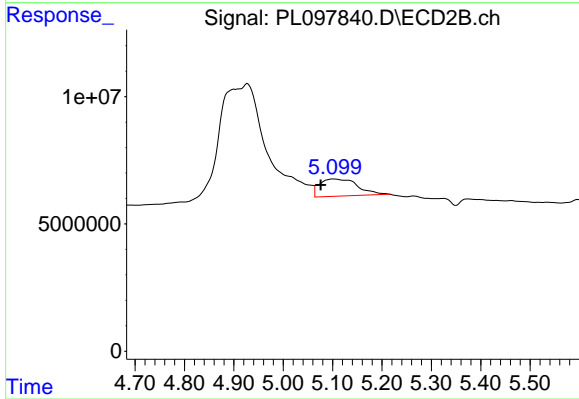
R.T.: 5.102 min  
 Delta R.T.: -0.029 min  
 Response: 36353038  
 Conc: 3.57 ng/ml



#11 alpha-Chlordane

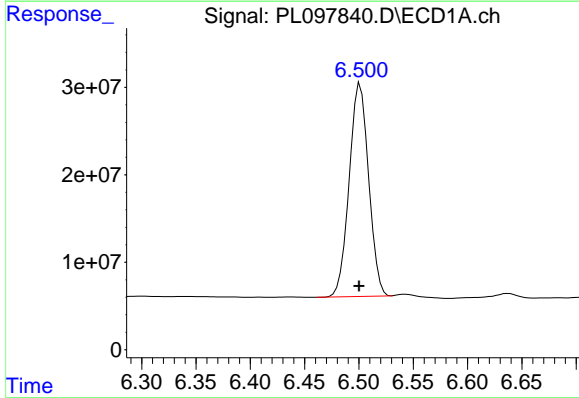
R.T.: 0.000 min  
 Exp R.T.: 5.953 min  
 Response: 0  
 Conc: N.D.

Instrument :  
 ECD\_L  
 ClientSampleId :



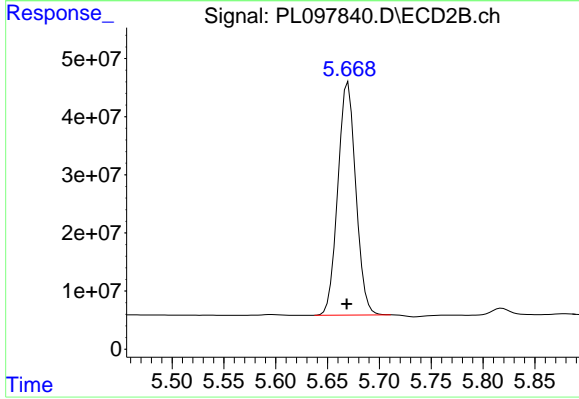
#11 alpha-Chlordane

R.T.: 5.102 min  
 Delta R.T.: 0.026 min  
 Response: 36353038  
 Conc: 3.54 ng/ml



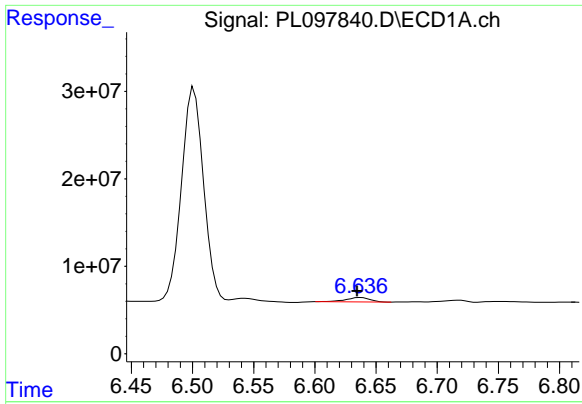
#14 Endrin

R.T.: 6.501 min  
 Delta R.T.: 0.001 min  
 Response: 303606990  
 Conc: 58.62 ng/ml



#14 Endrin

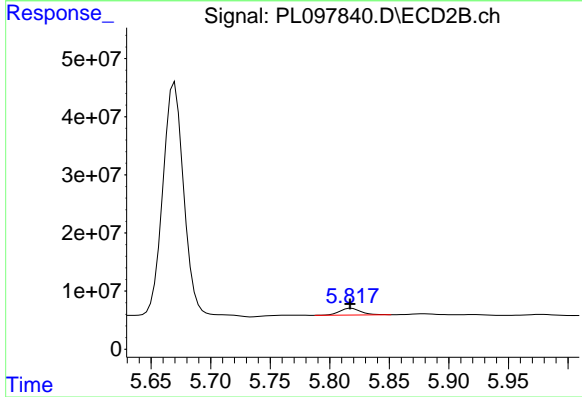
R.T.: 5.670 min  
 Delta R.T.: 0.001 min  
 Response: 483712429  
 Conc: 57.88 ng/ml



#16 4,4'-DDD

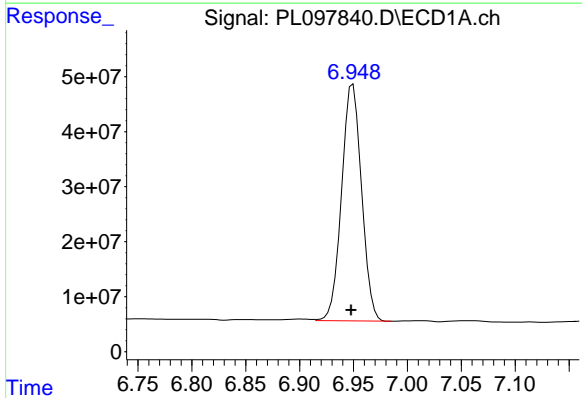
R.T.: 6.637 min  
 Delta R.T.: 0.003 min  
 Response: 6916851  
 Conc: 1.49 ng/ml

Instrument :  
 ECD\_L  
 ClientSampleId :



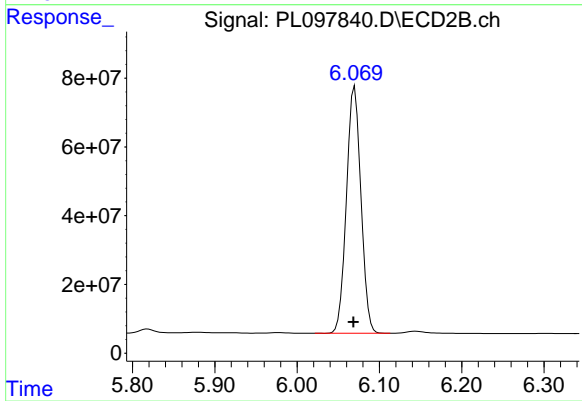
#16 4,4'-DDD

R.T.: 5.818 min  
 Delta R.T.: 0.001 min  
 Response: 14070268  
 Conc: 1.88 ng/ml



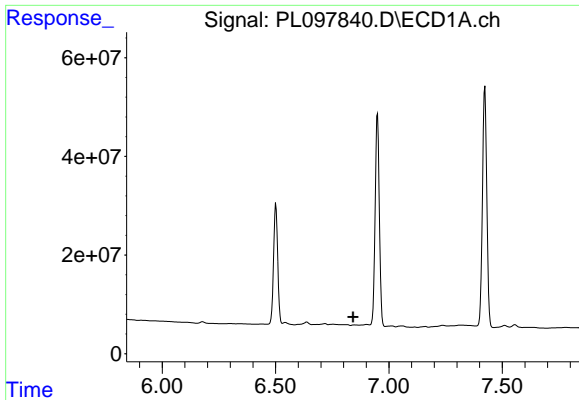
#17 4,4'-DDT

R.T.: 6.949 min  
 Delta R.T.: 0.002 min  
 Response: 554792001  
 Conc: 115.82 ng/ml



#17 4,4'-DDT

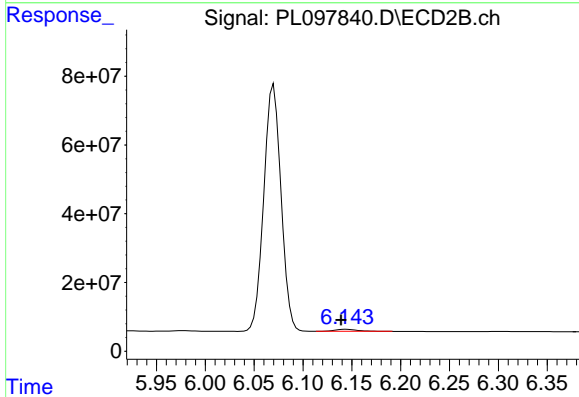
R.T.: 6.070 min  
 Delta R.T.: 0.001 min  
 Response: 881253774  
 Conc: 114.89 ng/ml



#18 Endrin aldehyde

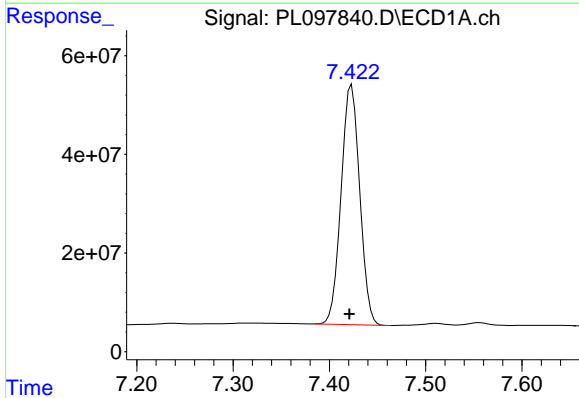
R.T.: 0.000 min  
 Exp R.T.: 6.843 min  
 Response: 0  
 Conc: N.D.

Instrument :  
 ECD\_L  
 ClientSampleId :



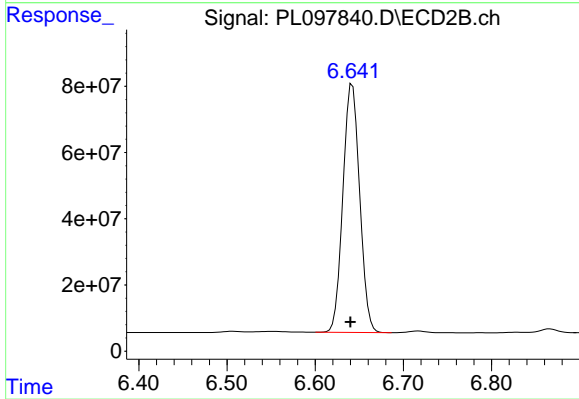
#18 Endrin aldehyde

R.T.: 6.144 min  
 Delta R.T.: 0.005 min  
 Response: 9831265  
 Conc: 1.54 ng/ml



#20 Methoxychlor

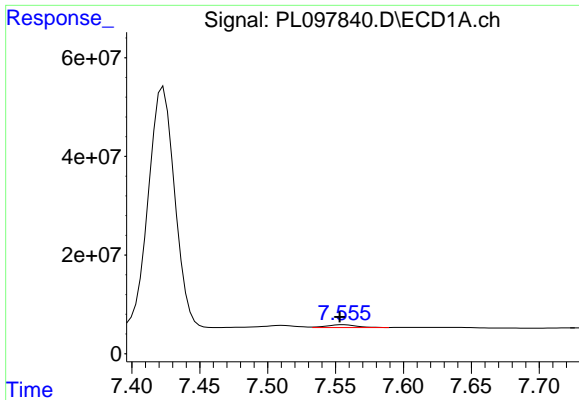
R.T.: 7.423 min  
 Delta R.T.: 0.002 min  
 Response: 650973117  
 Conc: 258.64 ng/ml



#20 Methoxychlor

R.T.: 6.642 min  
 Delta R.T.: 0.002 min  
 Response: 990765509  
 Conc: 237.08 ng/ml

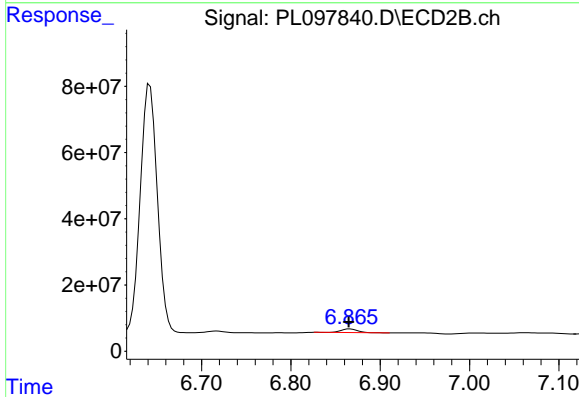




#21 Endrin ketone

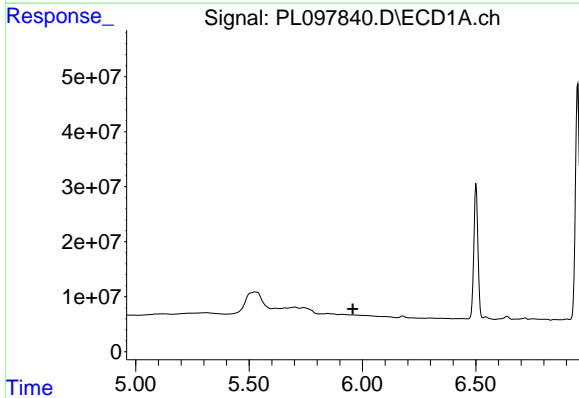
R.T.: 7.556 min  
 Delta R.T.: 0.003 min  
 Response: 8543471  
 Conc: 1.64 ng/ml

Instrument :  
 ECD\_L  
 ClientSampleId :



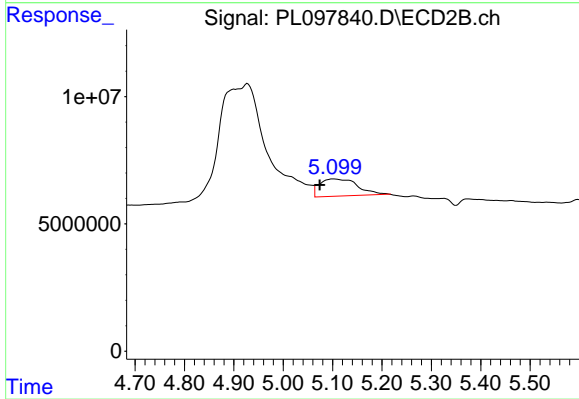
#21 Endrin ketone

R.T.: 6.866 min  
 Delta R.T.: 0.001 min  
 Response: 13677043  
 Conc: 1.53 ng/ml



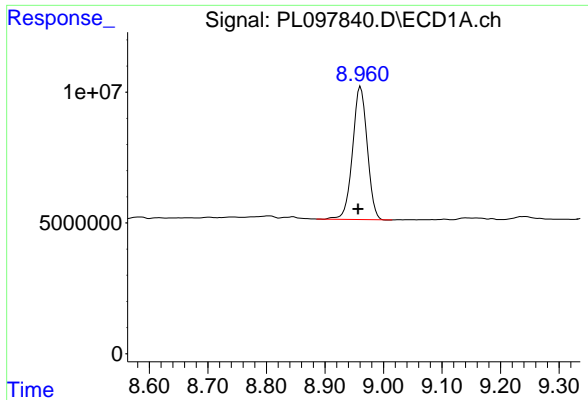
#26 Chlordane-4

R.T.: 0.000 min  
 Exp R.T. : 5.958 min  
 Response: 0  
 Conc: N.D.



#26 Chlordane-4

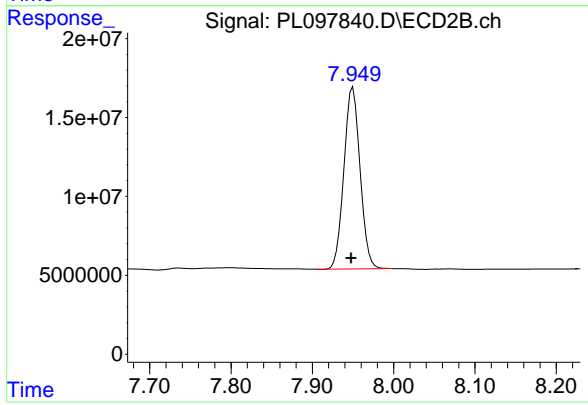
R.T.: 5.102 min  
 Delta R.T.: 0.028 min  
 Response: 36353038  
 Conc: 45.03 ng/ml



#28 Decachlorobiphenyl

R.T.: 8.961 min  
Delta R.T.: 0.004 min  
Response: 88427115  
Conc: 23.27 ng/ml

Instrument :  
ECD\_L  
ClientSampleId :



#28 Decachlorobiphenyl

R.T.: 7.950 min  
Delta R.T.: 0.002 min  
Response: 158483037  
Conc: 24.10 ng/ml