

Data Path : Z:\pestpcbsrv\HPCHEM1\ECD_L\Data\PL121125\
 Data File : PL097841.D
 Signal(s) : Signal #1: ECD1A.ch Signal #2: ECD2B.ch
 Acq On : 11 Dec 2025 14:19
 Operator : AR\AJ
 Sample : PSTDCCC050
 Misc :
 ALS Vial : 4 Sample Multiplier: 1

Instrument :
 ECD_L
 ClientSampleId :

Integration File signal 1: autoint1.e
 Integration File signal 2: autoint2.e
 Quant Time: Dec 12 03:10:15 2025
 Quant Method : Z:\pestpcbsrv\HPCHEM1\ECD_L\methods\PL120925.M
 Quant Title : GC Extractables
 QLast Update : Tue Dec 09 14:16:16 2025
 Response via : Initial Calibration
 Integrator: ChemStation

Volume Inj. : 1 µl
 Signal #1 Phase : ZB-MR2 Signal #2 Phase: ZB-MR2
 Signal #1 Info : 30M x 0.32mm x0.5 Signal #2 Info : 30M x 0.32mm x0.25µm

	Compound	RT#1	RT#2	Resp#1	Resp#2	ng/ml	ng/ml

System Monitoring Compounds							
1)	SA Tetrachlo...	3.500	2.797	250.4E6	358.0E6	49.621	51.255
28)	SA Decachlor...	8.967	7.952	170.1E6	309.6E6	44.782	47.080
Target Compounds							
2)	A alpha-BHC	3.947	3.300	421.2E6	587.8E6	49.807	51.226
3)	MA gamma-BHC...	4.275	3.631	387.4E6	547.6E6	48.329	50.909
4)	MA Heptachlor	4.865	3.977	373.4E6	584.7E6	46.896	56.243
5)	MB Aldrin	5.204	4.258	347.9E6	505.0E6	48.026	51.062
6)	B beta-BHC	4.465	3.927	158.4E6	229.5E6	47.308	49.491
7)	B delta-BHC	4.710	4.159	365.2E6	545.7E6	47.151	51.059
8)	Heptachlo...	5.623	4.759	394.2E6	444.1E6	59.254	49.329
9)	A Endosulfan I	6.005	5.130	286.1E6	408.1E6	48.602	40.056
10)	B gamma-Chl...	5.878	5.011	316.8E6	507.6E6	48.809	49.837
11)	B alpha-Chl...	5.958	5.076	308.2E6	504.3E6	47.472	49.176
12)	B 4,4'-DDE	6.129	5.265	283.2E6	512.9E6	48.214	58.217
13)	MA Dieldrin	6.278	5.395	307.8E6	525.5E6	50.163	56.077
14)	MA Endrin	6.505	5.670	256.2E6	499.0E6	49.464	59.714
15)	B Endosulfa...	6.719	5.962	317.3E6	424.5E6	62.091	51.282
16)	A 4,4'-DDD	6.640	5.818	270.4E6	390.6E6	58.387	52.069
17)	MA 4,4'-DDT	6.954	6.070	233.6E6	398.0E6	48.756	51.886
18)	B Endrin al...	6.848	6.140	199.5E6	316.2E6	50.625	49.524
19)	B Endosulfa...	7.081	6.364	238.2E6	415.2E6	48.048	50.998
20)	A Methoxychlor	7.426	6.643	115.4E6	210.5E6	45.842	50.376
21)	B Endrin ke...	7.560	6.868	244.4E6	413.9E6	47.036	46.398
22)	Mirex	8.037	7.056	173.2E6	287.0E6	50.222	44.464
24)	Chlordane-2	0.000	4.374	0	6186288	N.D.	20.126 #
25)	Chlordane-3	5.878	5.011	316.8E6	507.6E6	359.095	581.351 #
26)	Chlordane-4	5.958	5.076	308.2E6	504.3E6	291.090	624.674 #
27)	Chlordane-5	0.000	5.962	0	424.5E6	N.D.	1290.274 #

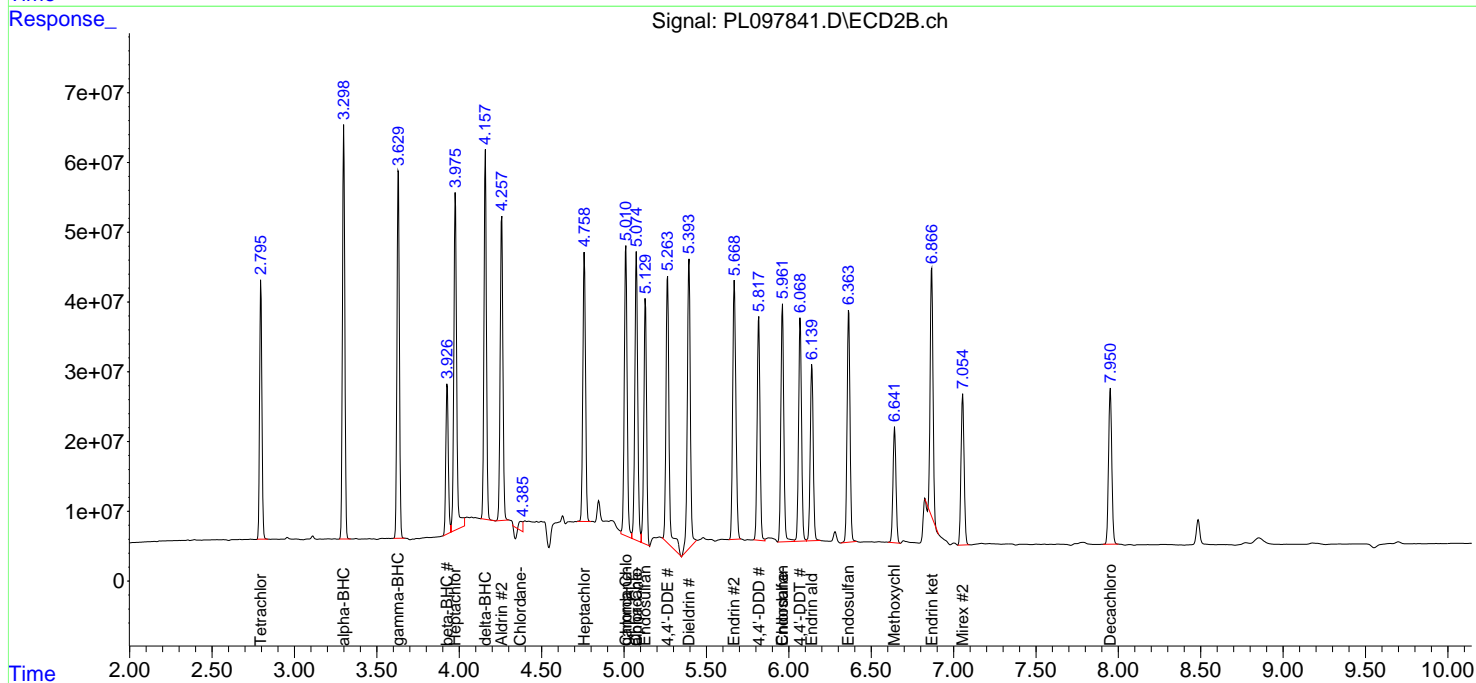
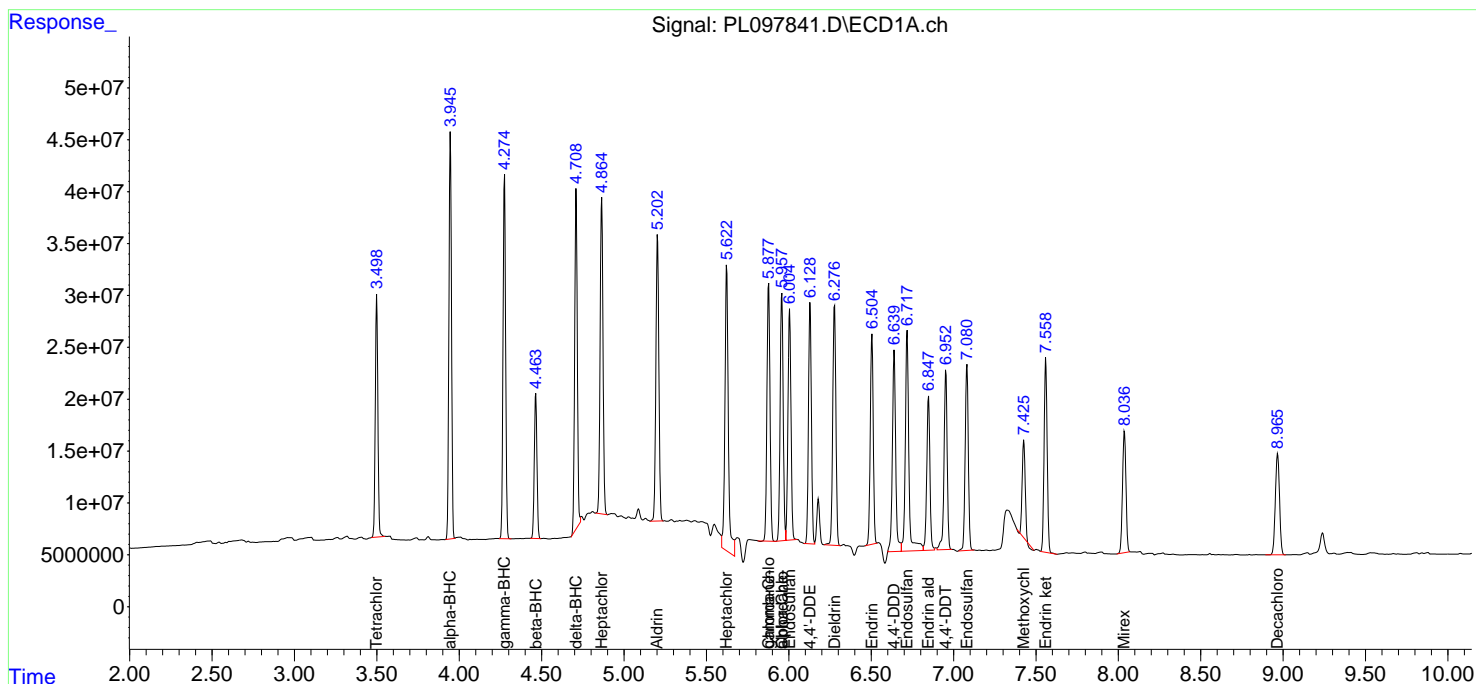
(f)=RT Delta > 1/2 Window (#)=Amounts differ by > 25% (m)=manual int.

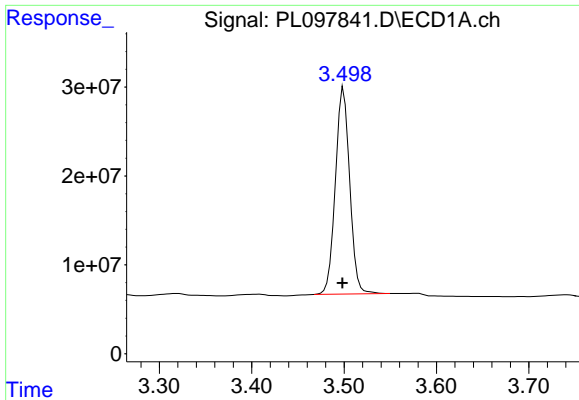
Data Path : Z:\pestpcbsrv\HPCHEM1\ECD_L\Data\PL121125\
 Data File : PL097841.D
 Signal(s) : Signal #1: ECD1A.ch Signal #2: ECD2B.ch
 Acq On : 11 Dec 2025 14:19
 Operator : AR\AJ
 Sample : PSTDCCC050
 Misc :
 ALS Vial : 4 Sample Multiplier: 1

Instrument :
 ECD_L
 ClientSampleId :

Integration File signal 1: autoint1.e
 Integration File signal 2: autoint2.e
 Quant Time: Dec 12 03:10:15 2025
 Quant Method : Z:\pestpcbsrv\HPCHEM1\ECD_L\methods\PL120925.M
 Quant Title : GC Extractables
 QLast Update : Tue Dec 09 14:16:16 2025
 Response via : Initial Calibration
 Integrator: ChemStation

Volume Inj. : 1 µl
 Signal #1 Phase : ZB-MR1 Signal #2 Phase: ZB-MR2
 Signal #1 Info : 30M x 0.32mm x0.5 Signal #2 Info : 30M x 0.32mm x0.25µm

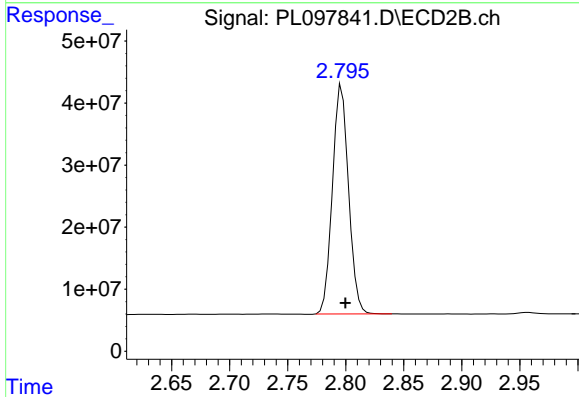




#1 Tetrachloro-m-xylene

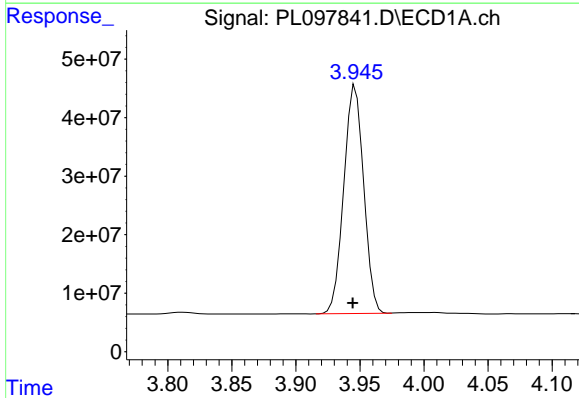
R.T.: 3.500 min
 Delta R.T.: 0.002 min
 Response: 250434046
 Conc: 49.62 ng/ml

Instrument :
 ECD_L
 ClientSampleId :



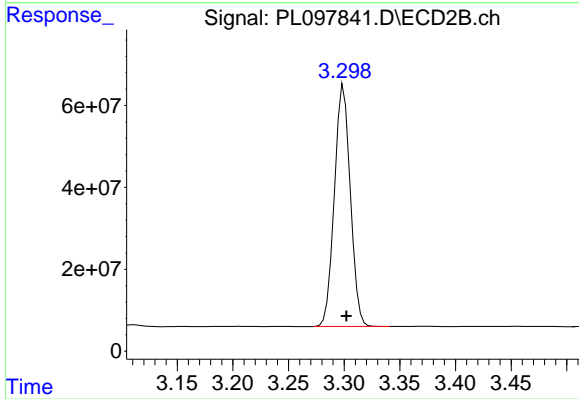
#1 Tetrachloro-m-xylene

R.T.: 2.797 min
 Delta R.T.: -0.003 min
 Response: 358023602
 Conc: 51.25 ng/ml



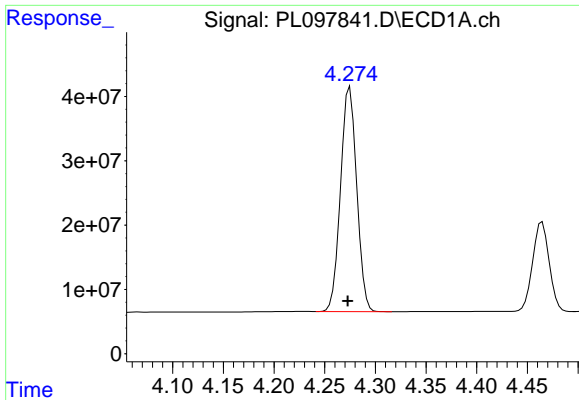
#2 alpha-BHC

R.T.: 3.947 min
 Delta R.T.: 0.002 min
 Response: 421203174
 Conc: 49.81 ng/ml



#2 alpha-BHC

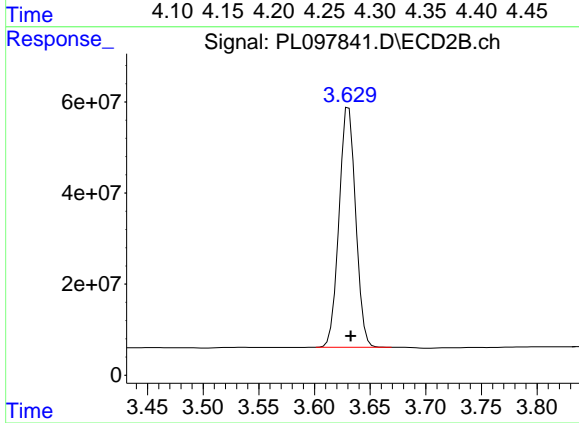
R.T.: 3.300 min
 Delta R.T.: -0.002 min
 Response: 587751987
 Conc: 51.23 ng/ml



#3 gamma-BHC (Lindane)

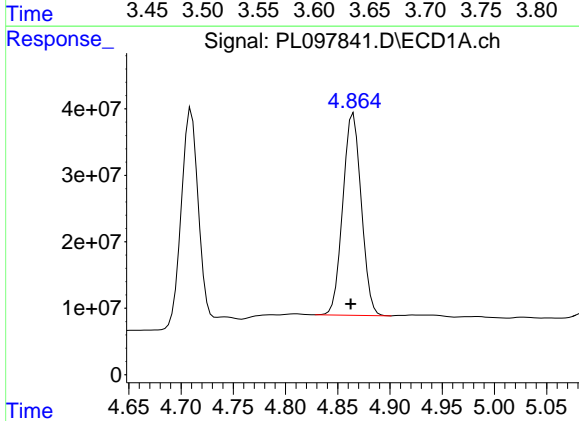
R.T.: 4.275 min
Delta R.T.: 0.002 min
Response: 387429947
Conc: 48.33 ng/ml

Instrument :
ECD_L
ClientSampleId :



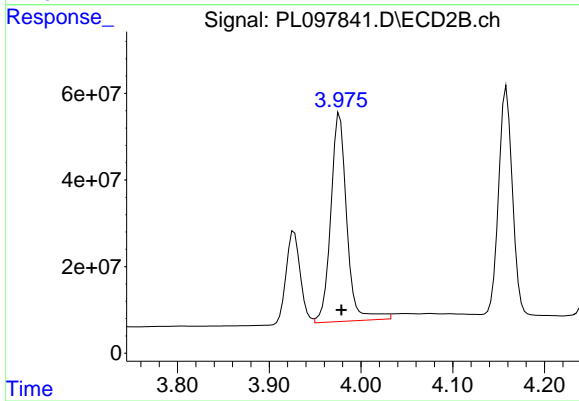
#3 gamma-BHC (Lindane)

R.T.: 3.631 min
Delta R.T.: -0.002 min
Response: 547579869
Conc: 50.91 ng/ml



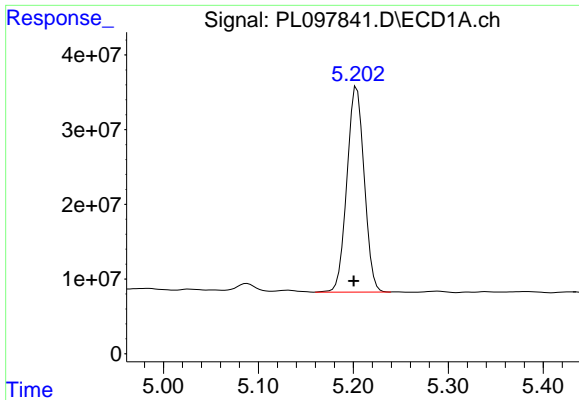
#4 Heptachlor

R.T.: 4.865 min
Delta R.T.: 0.003 min
Response: 373395375
Conc: 46.90 ng/ml



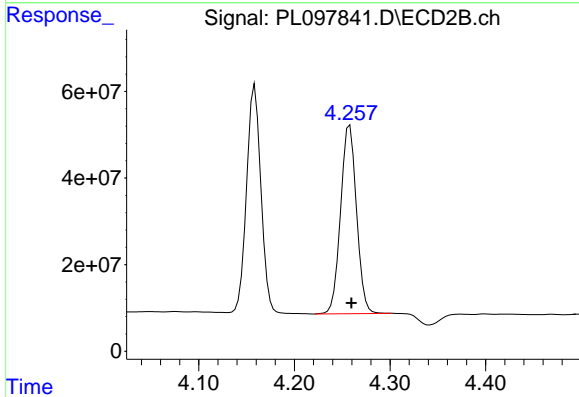
#4 Heptachlor

R.T.: 3.977 min
Delta R.T.: -0.002 min
Response: 584654409
Conc: 56.24 ng/ml

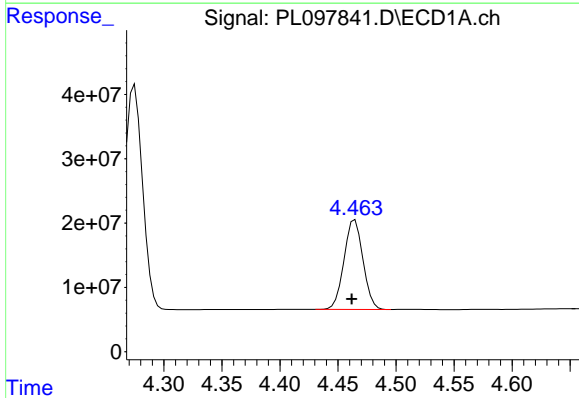


#5 Aldrin
 R.T.: 5.204 min
 Delta R.T.: 0.003 min
 Response: 347925494
 Conc: 48.03 ng/ml

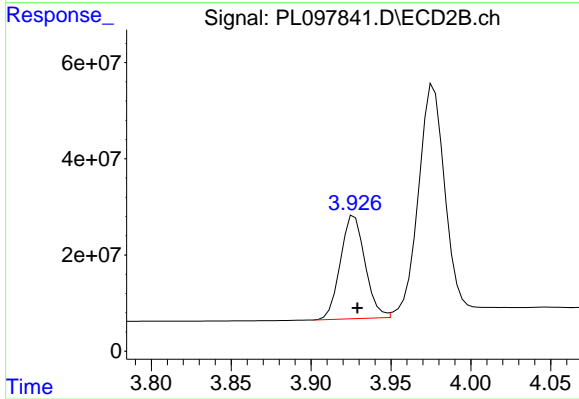
Instrument :
 ECD_L
 ClientSampleId :



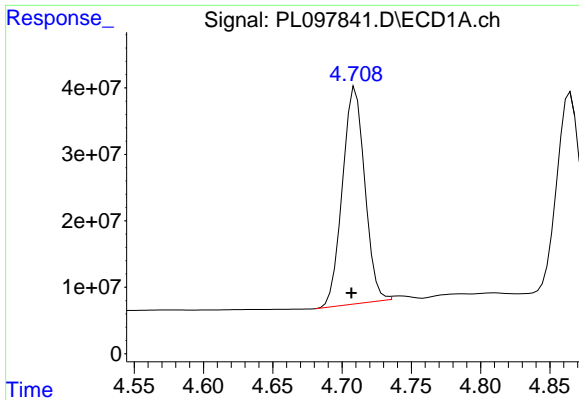
#5 Aldrin
 R.T.: 4.258 min
 Delta R.T.: -0.002 min
 Response: 504984431
 Conc: 51.06 ng/ml



#6 beta-BHC
 R.T.: 4.465 min
 Delta R.T.: 0.003 min
 Response: 158394941
 Conc: 47.31 ng/ml



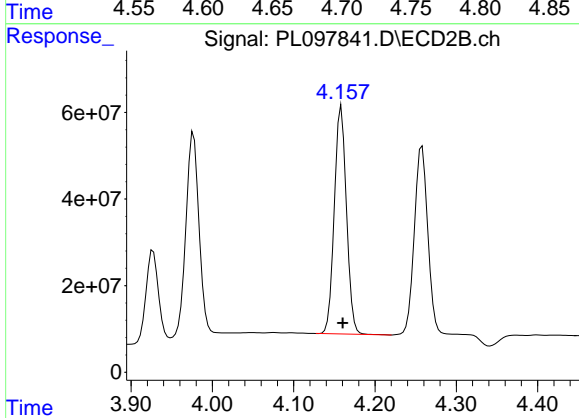
#6 beta-BHC
 R.T.: 3.927 min
 Delta R.T.: -0.002 min
 Response: 229456847
 Conc: 49.49 ng/ml



#7 delta-BHC

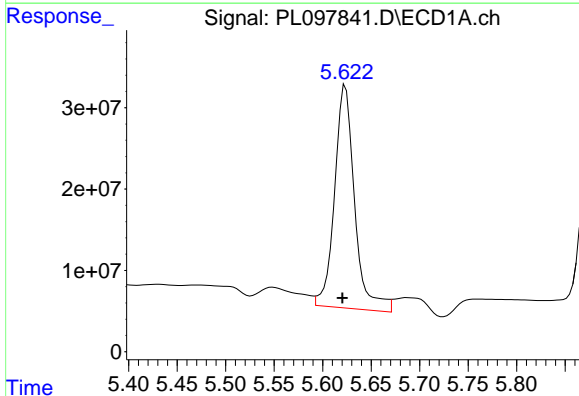
R.T.: 4.710 min
 Delta R.T.: 0.003 min
 Response: 365192556
 Conc: 47.15 ng/ml

Instrument :
 ECD_L
 ClientSampleId :



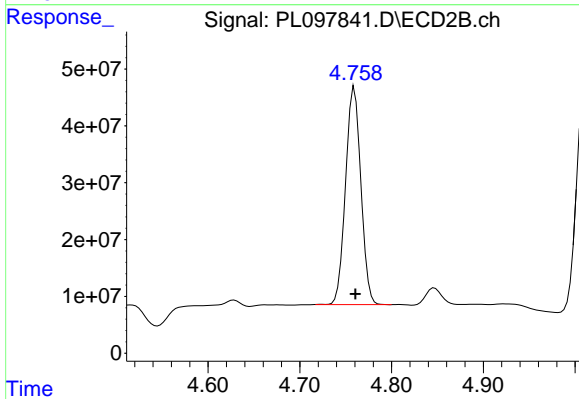
#7 delta-BHC

R.T.: 4.159 min
 Delta R.T.: -0.002 min
 Response: 545682059
 Conc: 51.06 ng/ml



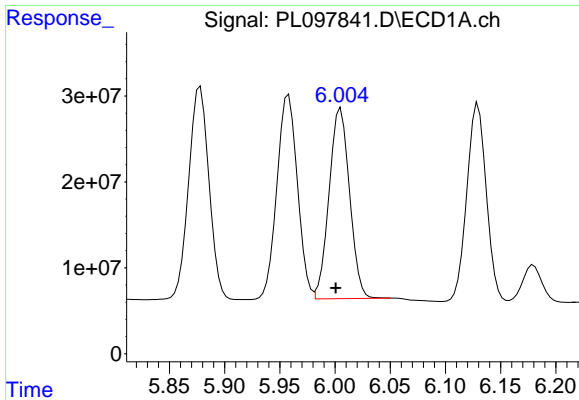
#8 Heptachlor epoxide

R.T.: 5.623 min
 Delta R.T.: 0.003 min
 Response: 394228269
 Conc: 59.25 ng/ml



#8 Heptachlor epoxide

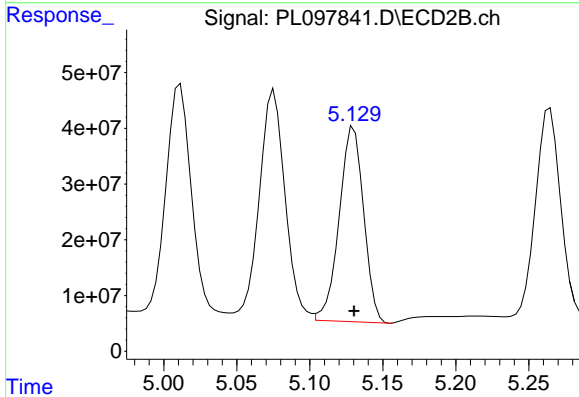
R.T.: 4.759 min
 Delta R.T.: -0.001 min
 Response: 444148408
 Conc: 49.33 ng/ml



#9 Endosulfan I

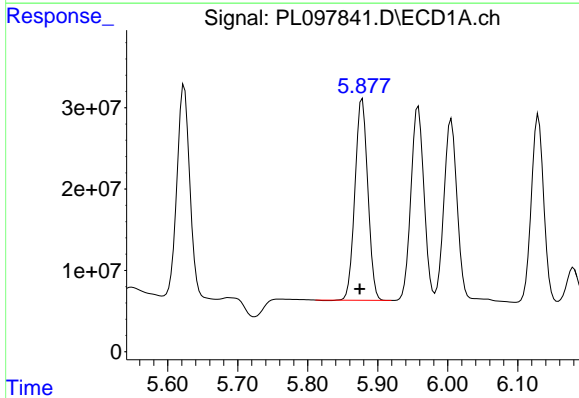
R.T.: 6.005 min
 Delta R.T.: 0.005 min
 Response: 286143780
 Conc: 48.60 ng/ml

Instrument :
 ECD_L
 ClientSampleId :



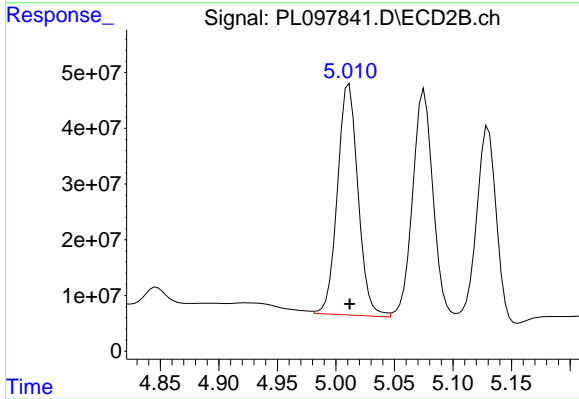
#9 Endosulfan I

R.T.: 5.130 min
 Delta R.T.: 0.000 min
 Response: 408104029
 Conc: 40.06 ng/ml



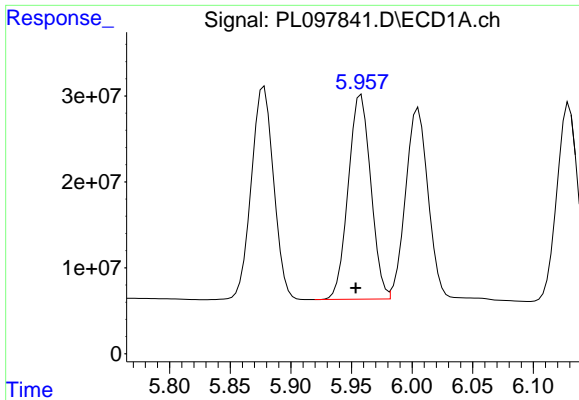
#10 gamma-Chlordane

R.T.: 5.878 min
 Delta R.T.: 0.004 min
 Response: 316849649
 Conc: 48.81 ng/ml



#10 gamma-Chlordane

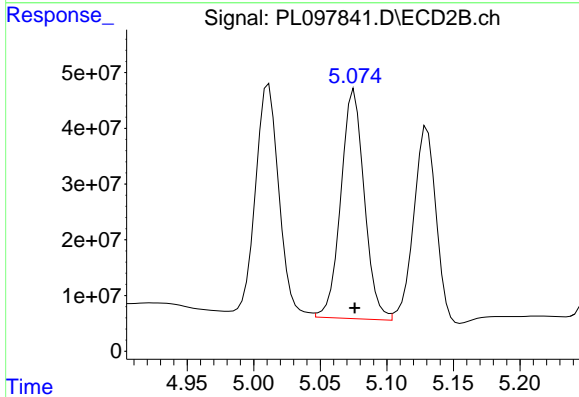
R.T.: 5.011 min
 Delta R.T.: 0.000 min
 Response: 507598764
 Conc: 49.84 ng/ml



#11 alpha-Chlordane

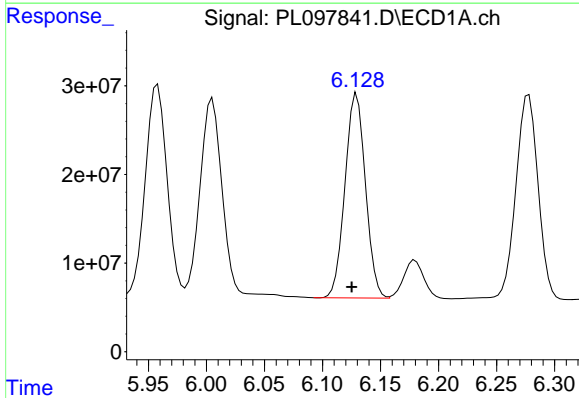
R.T.: 5.958 min
 Delta R.T.: 0.005 min
 Response: 308239948
 Conc: 47.47 ng/ml

Instrument :
 ECD_L
 ClientSampleId :



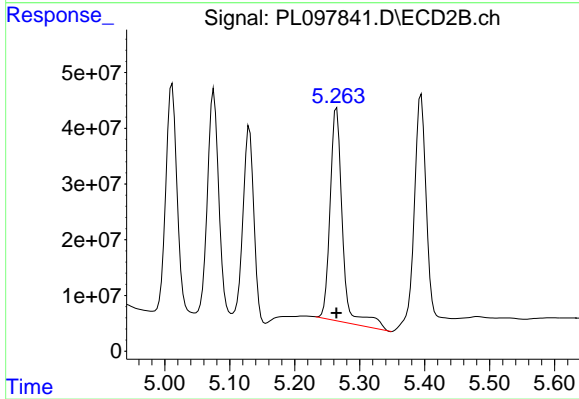
#11 alpha-Chlordane

R.T.: 5.076 min
 Delta R.T.: 0.000 min
 Response: 504297863
 Conc: 49.18 ng/ml



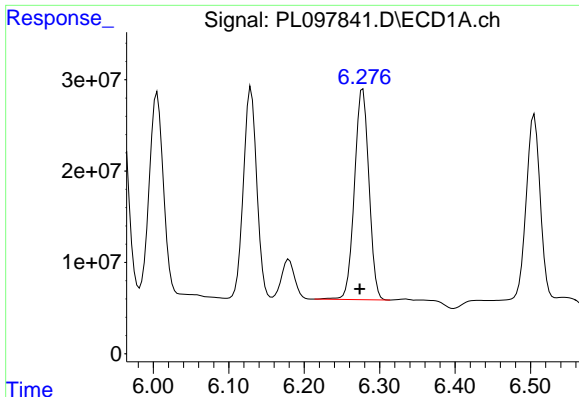
#12 4,4'-DDE

R.T.: 6.129 min
 Delta R.T.: 0.004 min
 Response: 283176582
 Conc: 48.21 ng/ml



#12 4,4'-DDE

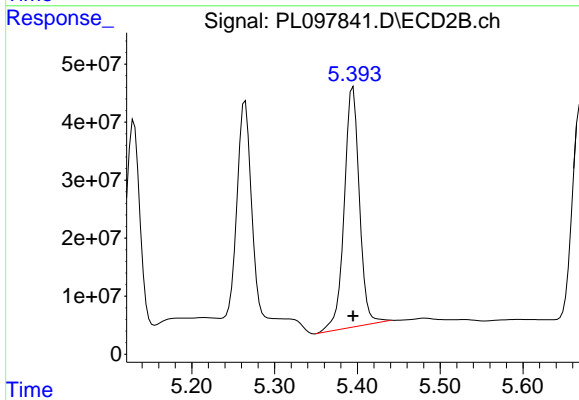
R.T.: 5.265 min
 Delta R.T.: 0.000 min
 Response: 512934085
 Conc: 58.22 ng/ml



#13 Dieldrin

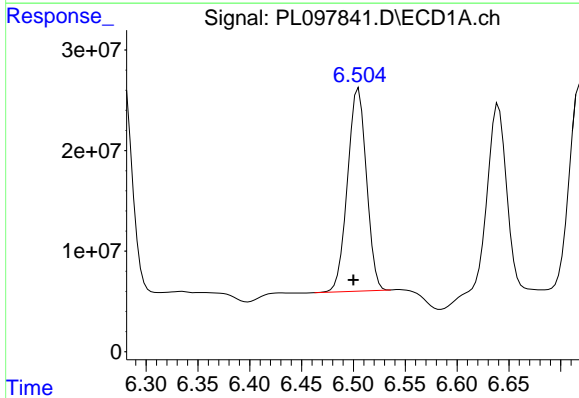
R.T.: 6.278 min
 Delta R.T.: 0.004 min
 Response: 307827657
 Conc: 50.16 ng/ml

Instrument :
 ECD_L
 ClientSampleId :



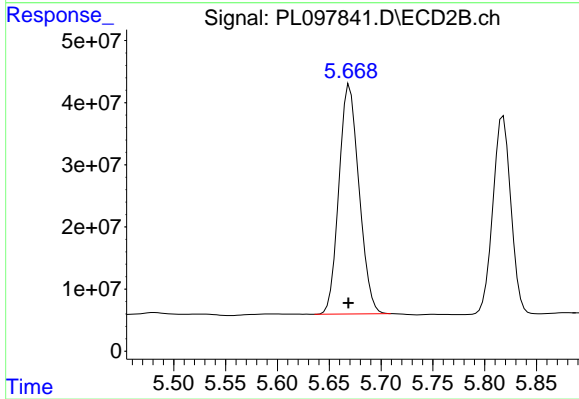
#13 Dieldrin

R.T.: 5.395 min
 Delta R.T.: 0.000 min
 Response: 525464806
 Conc: 56.08 ng/ml



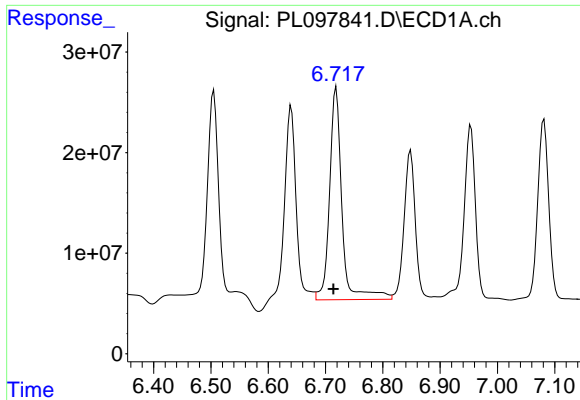
#14 Endrin

R.T.: 6.505 min
 Delta R.T.: 0.005 min
 Response: 256196359
 Conc: 49.46 ng/ml



#14 Endrin

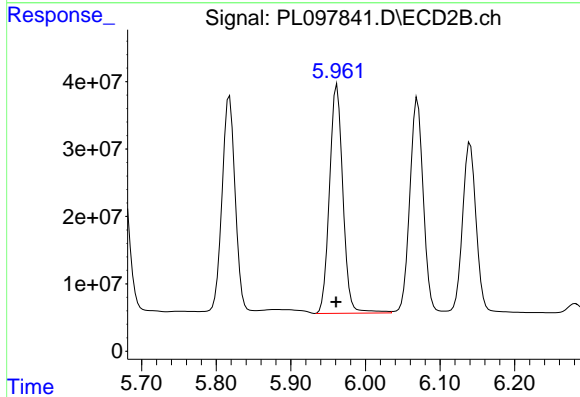
R.T.: 5.670 min
 Delta R.T.: 0.001 min
 Response: 499027157
 Conc: 59.71 ng/ml



#15 Endosulfan II

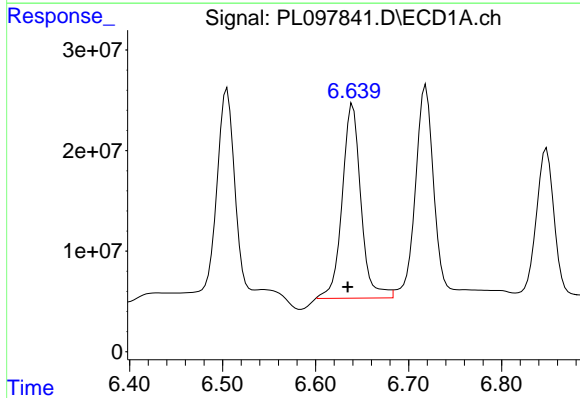
R.T.: 6.719 min
 Delta R.T.: 0.005 min
 Response: 317282098
 Conc: 62.09 ng/ml

Instrument :
 ECD_L
 ClientSampleId :



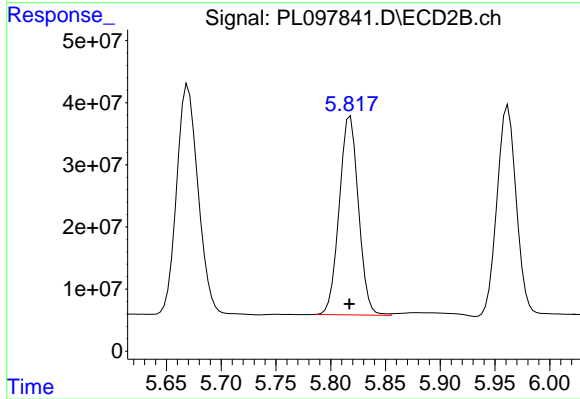
#15 Endosulfan II

R.T.: 5.962 min
 Delta R.T.: 0.001 min
 Response: 424460509
 Conc: 51.28 ng/ml



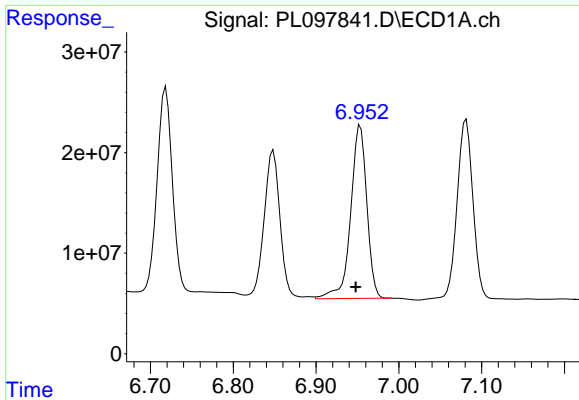
#16 4,4'-DDD

R.T.: 6.640 min
 Delta R.T.: 0.005 min
 Response: 270449459
 Conc: 58.39 ng/ml



#16 4,4'-DDD

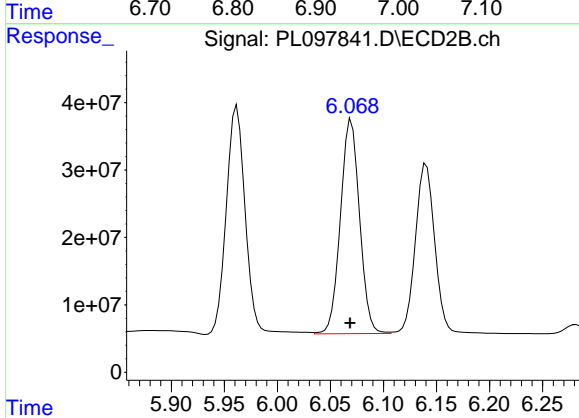
R.T.: 5.818 min
 Delta R.T.: 0.000 min
 Response: 390572081
 Conc: 52.07 ng/ml



#17 4,4'-DDT

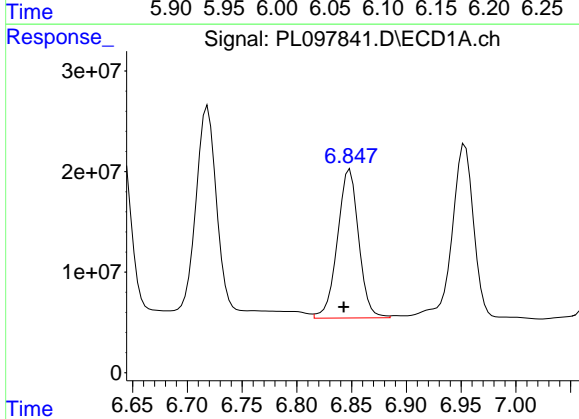
R.T.: 6.954 min
 Delta R.T.: 0.006 min
 Response: 233555100
 Conc: 48.76 ng/ml

Instrument :
 ECD_L
 ClientSampleId :



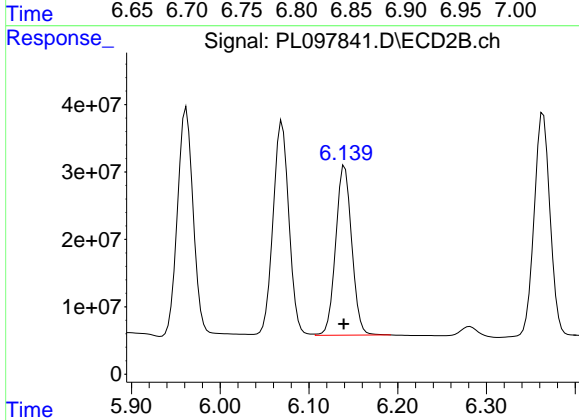
#17 4,4'-DDT

R.T.: 6.070 min
 Delta R.T.: 0.001 min
 Response: 397999155
 Conc: 51.89 ng/ml



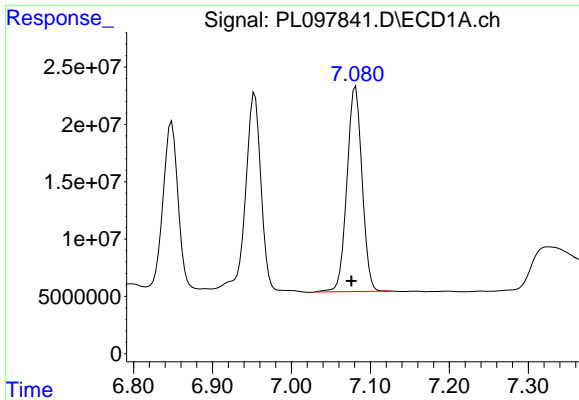
#18 Endrin aldehyde

R.T.: 6.848 min
 Delta R.T.: 0.006 min
 Response: 199478004
 Conc: 50.62 ng/ml



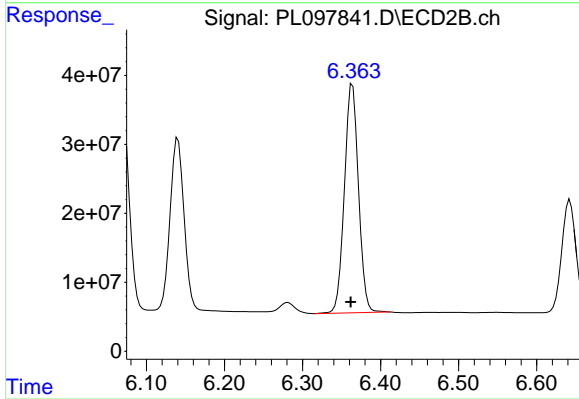
#18 Endrin aldehyde

R.T.: 6.140 min
 Delta R.T.: 0.001 min
 Response: 316215165
 Conc: 49.52 ng/ml

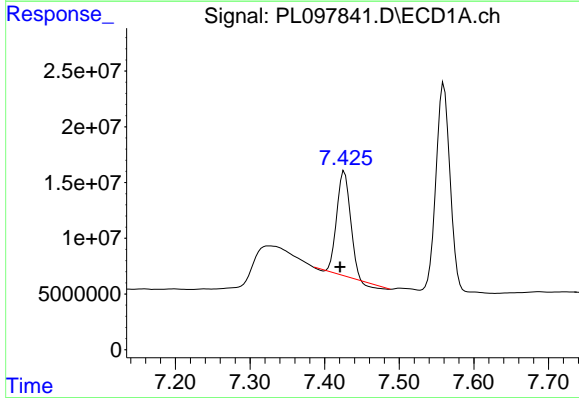


#19 Endosulfan Sulfate
 R.T.: 7.081 min
 Delta R.T.: 0.006 min
 Response: 238190435
 Conc: 48.05 ng/ml

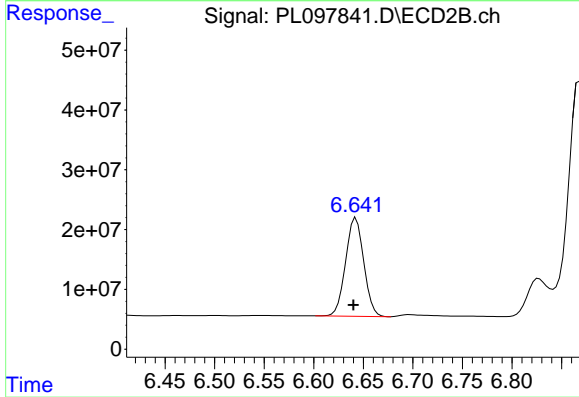
Instrument :
 ECD_L
 ClientSampleId :



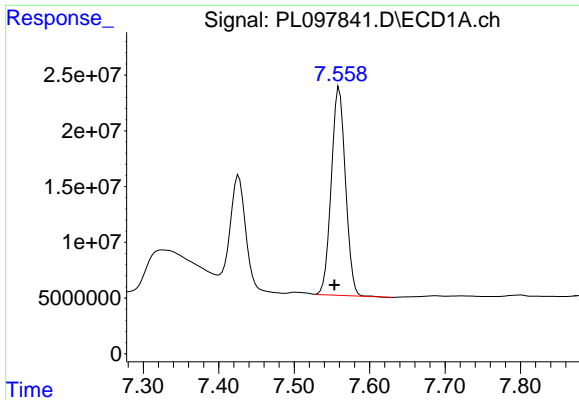
#19 Endosulfan Sulfate
 R.T.: 6.364 min
 Delta R.T.: 0.002 min
 Response: 415173565
 Conc: 51.00 ng/ml



#20 Methoxychlor
 R.T.: 7.426 min
 Delta R.T.: 0.006 min
 Response: 115377813
 Conc: 45.84 ng/ml



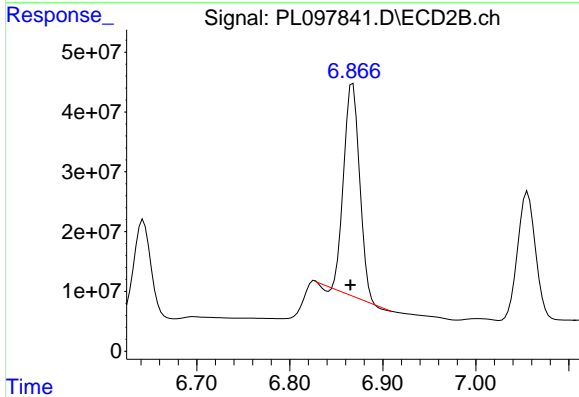
#20 Methoxychlor
 R.T.: 6.643 min
 Delta R.T.: 0.003 min
 Response: 210518761
 Conc: 50.38 ng/ml



#21 Endrin ketone

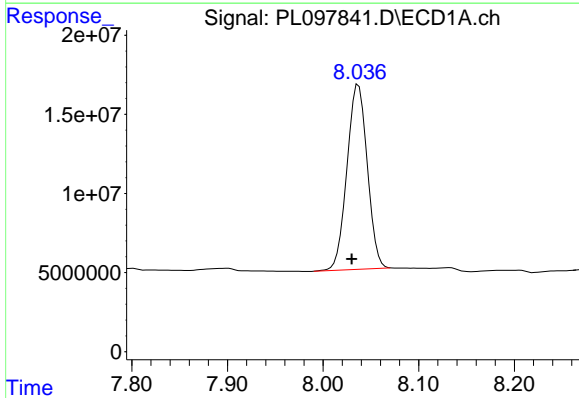
R.T.: 7.560 min
 Delta R.T.: 0.007 min
 Response: 244427719
 Conc: 47.04 ng/ml

Instrument :
 ECD_L
 ClientSampleId :



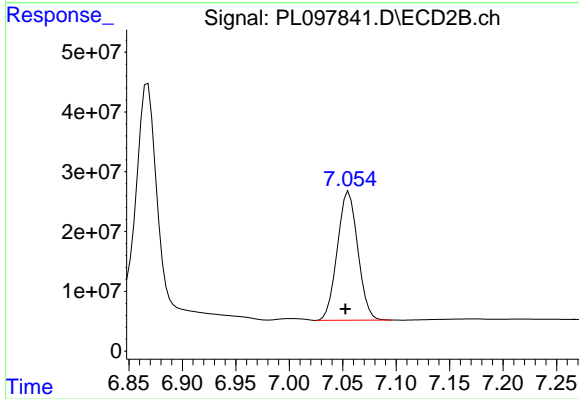
#21 Endrin ketone

R.T.: 6.868 min
 Delta R.T.: 0.003 min
 Response: 413915909
 Conc: 46.40 ng/ml



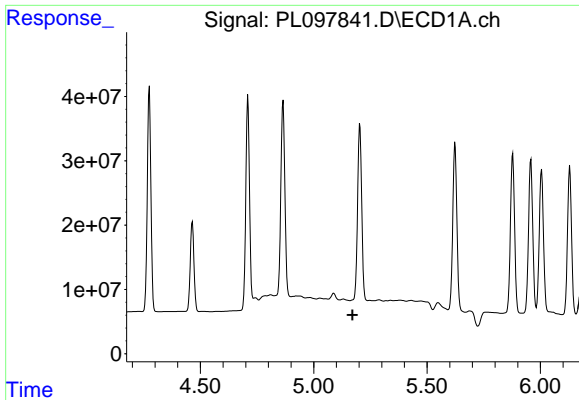
#22 Mirex

R.T.: 8.037 min
 Delta R.T.: 0.007 min
 Response: 173214120
 Conc: 50.22 ng/ml



#22 Mirex

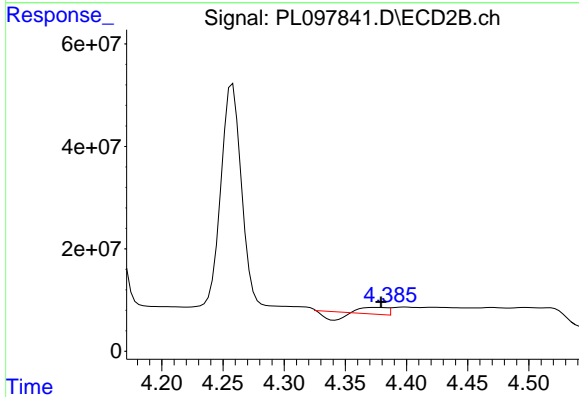
R.T.: 7.056 min
 Delta R.T.: 0.003 min
 Response: 287029661
 Conc: 44.46 ng/ml



#24 Chlordane-2

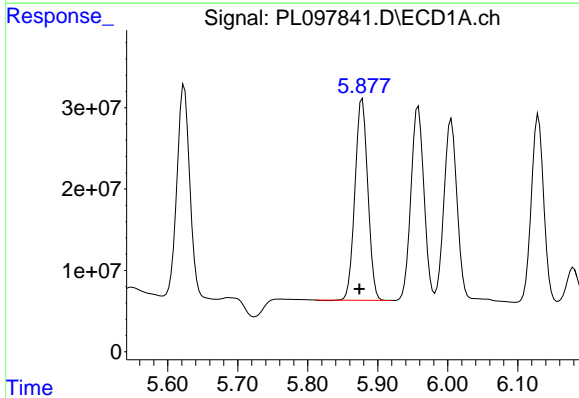
R.T.: 0.000 min
 Exp R.T.: 5.172 min
 Response: 0
 Conc: N.D.

Instrument :
 ECD_L
 ClientSampleId :



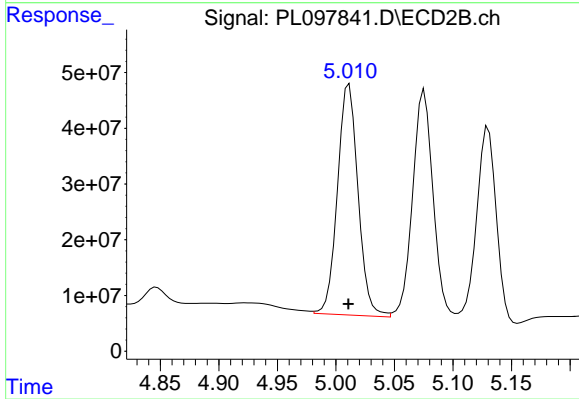
#24 Chlordane-2

R.T.: 4.374 min
 Delta R.T.: -0.005 min
 Response: 6186288
 Conc: 20.13 ng/ml



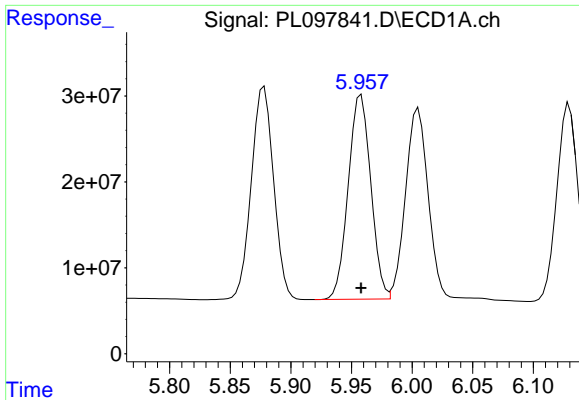
#25 Chlordane-3

R.T.: 5.878 min
 Delta R.T.: 0.004 min
 Response: 316849649
 Conc: 359.10 ng/ml



#25 Chlordane-3

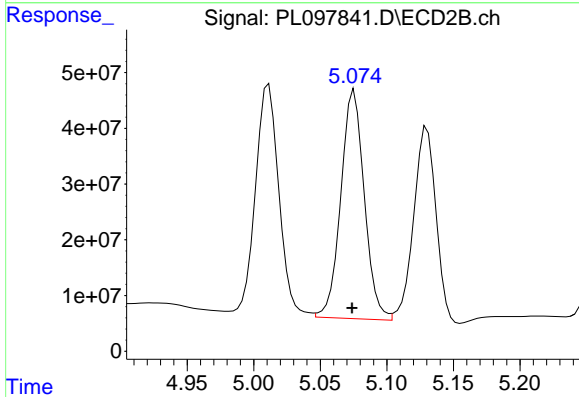
R.T.: 5.011 min
 Delta R.T.: 0.000 min
 Response: 507598764
 Conc: 581.35 ng/ml



#26 Chlordane-4

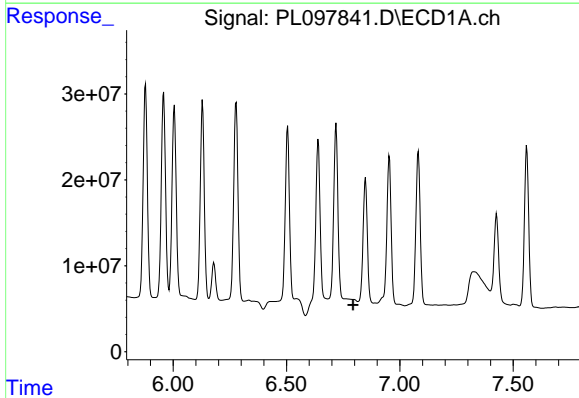
R.T.: 5.958 min
 Delta R.T.: 0.000 min
 Response: 308239948
 Conc: 291.09 ng/ml

Instrument :
 ECD_L
 ClientSampleId :



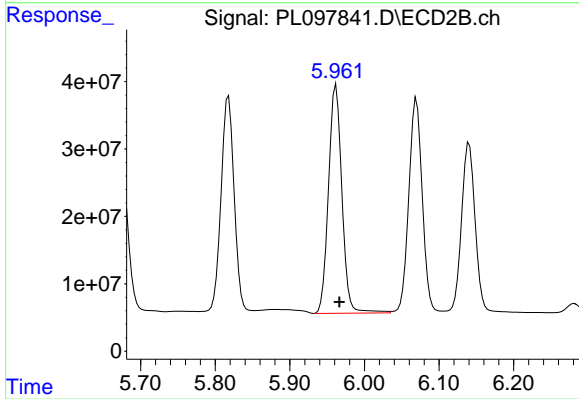
#26 Chlordane-4

R.T.: 5.076 min
 Delta R.T.: 0.002 min
 Response: 504297863
 Conc: 624.67 ng/ml



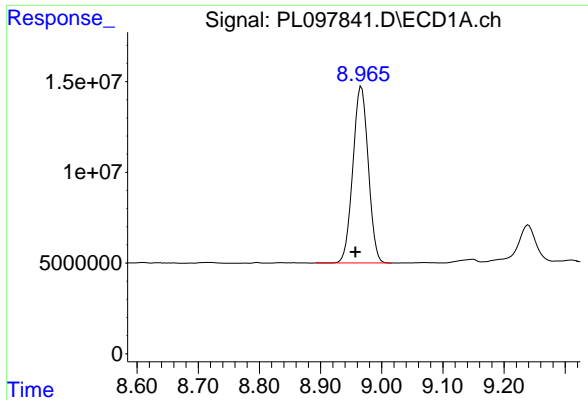
#27 Chlordane-5

R.T.: 0.000 min
 Exp R.T. : 6.794 min
 Response: 0
 Conc: N.D.



#27 Chlordane-5

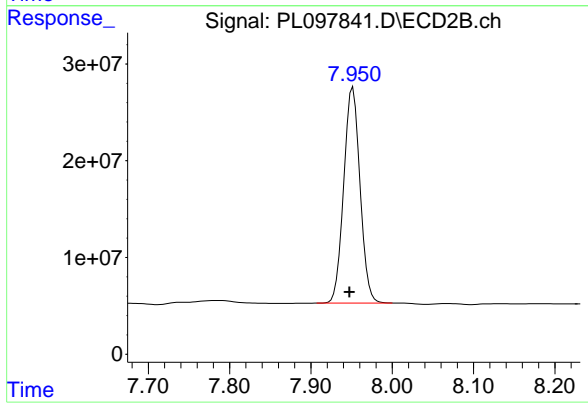
R.T.: 5.962 min
 Delta R.T.: -0.005 min
 Response: 424460509
 Conc: 1290.27 ng/ml



#28 Decachlorobiphenyl

R.T.: 8.967 min
Delta R.T.: 0.010 min
Response: 170147558
Conc: 44.78 ng/ml

Instrument :
ECD_L
ClientSampleId :



#28 Decachlorobiphenyl

R.T.: 7.952 min
Delta R.T.: 0.004 min
Response: 309600964
Conc: 47.08 ng/ml