

Data Path : Z:\pestpcbsrv\HPCHEM1\ECD_L\Data\PL121125\
 Data File : PL097844.D
 Signal(s) : Signal #1: ECD1A.ch Signal #2: ECD2B.ch
 Acq On : 11 Dec 2025 17:52
 Operator : AR\AJ
 Sample : Q3530-01
 Misc : PEST LOD 2.5PPB
 ALS Vial : 7 Sample Multiplier: 1

Instrument :
 ECD_L
 ClientSampleId :

Integration File signal 1: autoint1.e
 Integration File signal 2: autoint2.e
 Quant Time: Dec 12 03:11:05 2025
 Quant Method : Z:\pestpcbsrv\HPCHEM1\ECD_L\methods\PL120925.M
 Quant Title : GC Extractables
 QLast Update : Tue Dec 09 14:16:16 2025
 Response via : Initial Calibration
 Integrator: ChemStation

Volume Inj. : 1 µl
 Signal #1 Phase : ZB-MR2 Signal #2 Phase: ZB-MR2
 Signal #1 Info : 30M x 0.32mm x0.5 Signal #2 Info : 30M x 0.32mm x0.25µm

	Compound	RT#1	RT#2	Resp#1	Resp#2	ng/ml	ng/ml

System Monitoring Compounds							
1)	SA Tetrachlo...	3.498	2.800	114.0E6	157.4E6	22.591	22.533
28)	SA Decachlor...	8.960	7.950	105.0E6	153.5E6	27.642	23.341
Target Compounds							
2)	A alpha-BHC	3.944	3.302	22868522	29275434	2.704	2.552
3)	MA gamma-BHC...	4.272	3.633	19898202	28534948	2.482	2.653
4)	MA Heptachlor	4.862	3.978	20521240	28129583	2.577	2.706
5)	MB Aldrin	5.200	4.260	19891787	28900770	2.746	2.922
6)	B beta-BHC	4.461	3.929	9558100	12679801	2.855	2.735
7)	B delta-BHC	4.707	4.160	28924576	27920101	3.734	2.612 #
8)	Heptachlo...	5.621	4.760	28962229	26304331	4.353	2.921 #
9)	A Endosulfan I	6.002	5.131	17475170	47945088	2.968	4.706 #
10)	B gamma-Chl...	5.874	5.012	18565756	54022013	2.860	5.304 #
11)	B alpha-Chl...	5.954	5.076	20584536	45349590	3.170	4.422 #
12)	B 4,4'-DDE	6.126	5.265	14760107	23692229	2.513	2.689
13)	MA Dieldrin	6.274	5.395	16535303	27578062	2.695	2.943
14)	MA Endrin	6.500	5.669	13426469	22715314	2.592	2.718
15)	B Endosulfa...	6.715	5.961	17761763	24999355	3.476	3.020
16)	A 4,4'-DDD	6.636	5.817	12294012	21417906	2.654	2.855
17)	MA 4,4'-DDT	6.948	6.069	14393703	18929721	3.005	2.468
18)	B Endrin al...	6.844	6.140	13730909	23687848	3.485	3.710
19)	B Endosulfa...	7.076	6.363	16459159	23744555	3.320	2.917
20)	A Methoxychlor	7.422	6.642	7334162	11976276	2.914	2.866
21)	B Endrin ke...	7.555	6.866	15465936	26841952	2.976	3.009
22)	Mirex	8.033	7.055	11760608	21990661	3.410	3.407
24)	Chlordane-2	5.200f	0.000	19891787	0	82.336	N.D. #
25)	Chlordane-3	5.874	5.012	18565756	54022013	21.041	61.871 #
26)	Chlordane-4	5.954	5.076	20584536	45349590	19.439	56.175 #
27)	Chlordane-5	0.000	5.961	0	24999355	N.D.	75.993 #

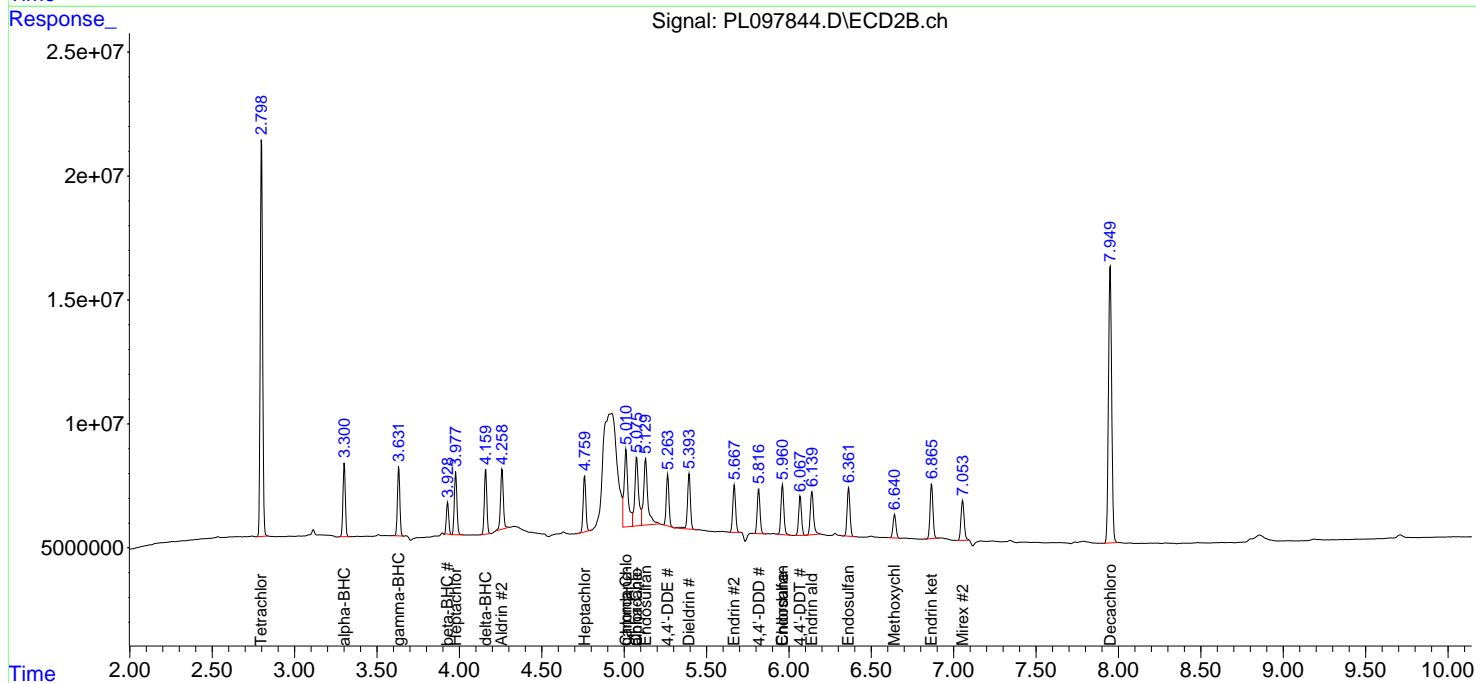
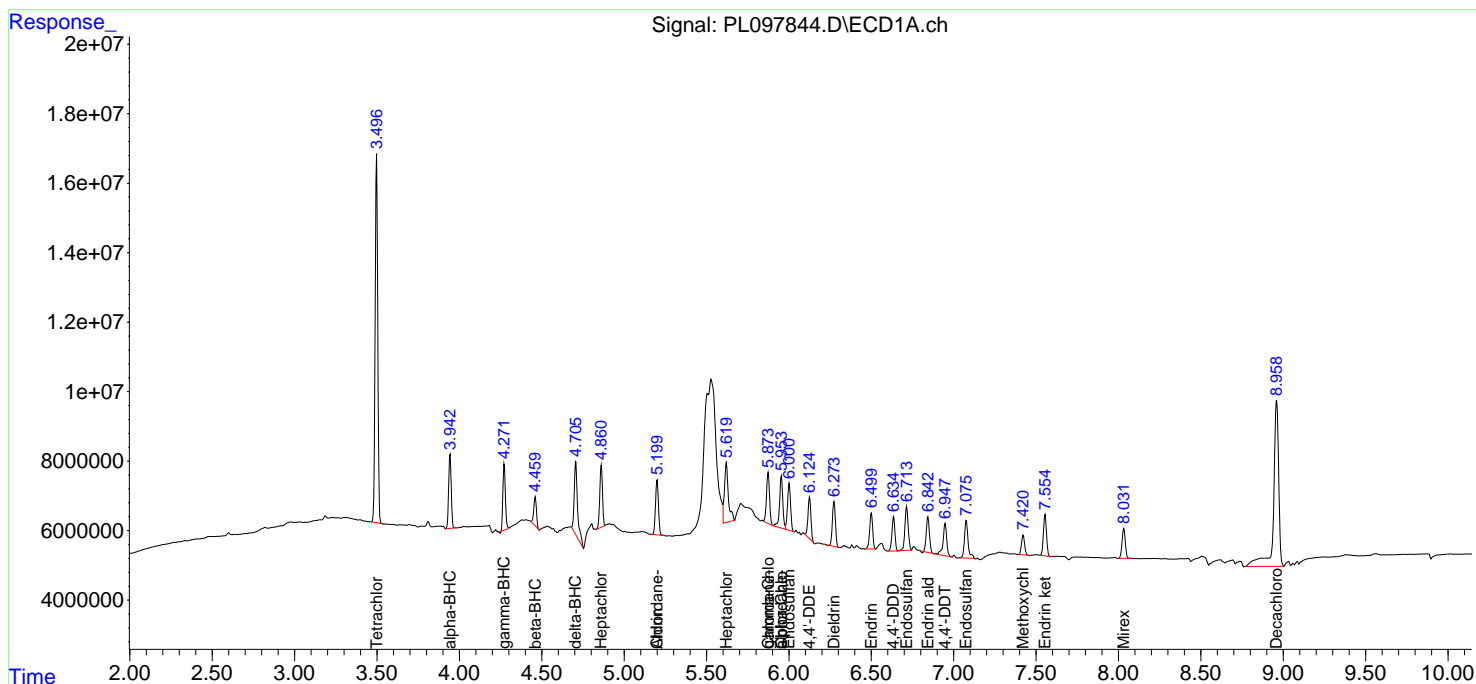
(f)=RT Delta > 1/2 Window (#)=Amounts differ by > 25% (m)=manual int.

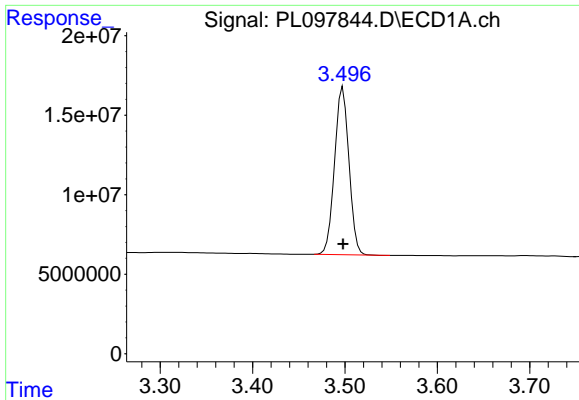
Data Path : Z:\pestpcbsrv\HPCHEM1\ECD_L\Data\PL121125\
 Data File : PL097844.D
 Signal(s) : Signal #1: ECD1A.ch Signal #2: ECD2B.ch
 Acq On : 11 Dec 2025 17:52
 Operator : AR\AJ
 Sample : Q3530-01
 Misc : PEST LOD 2.5PPB
 ALS Vial : 7 Sample Multiplier: 1

Instrument :
 ECD_L
 ClientSampleId :

Integration File signal 1: autoint1.e
 Integration File signal 2: autoint2.e
 Quant Time: Dec 12 03:11:05 2025
 Quant Method : Z:\pestpcbsrv\HPCHEM1\ECD_L\methods\PL120925.M
 Quant Title : GC Extractables
 QLast Update : Tue Dec 09 14:16:16 2025
 Response via : Initial Calibration
 Integrator: ChemStation

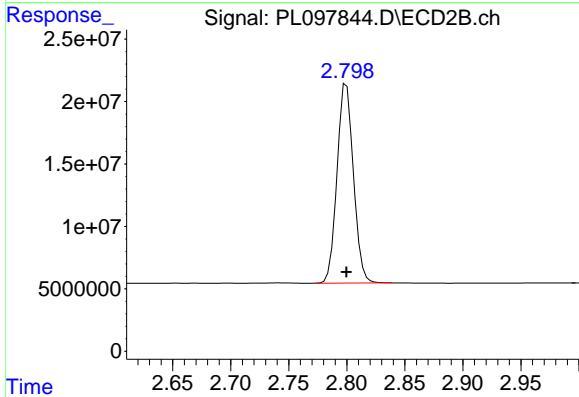
Volume Inj. : 1 µl
 Signal #1 Phase : ZB-MR1 Signal #2 Phase: ZB-MR2
 Signal #1 Info : 30M x 0.32mm x0.5 Signal #2 Info : 30M x 0.32mm x0.25µm



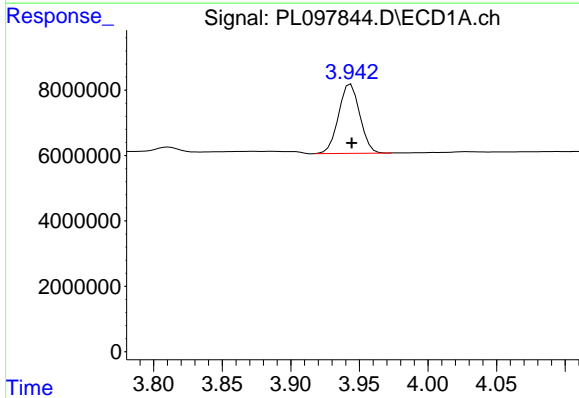


#1 Tetrachloro-m-xylene
 R.T.: 3.498 min
 Delta R.T.: 0.000 min
 Response: 114013863
 Conc: 22.59 ng/ml

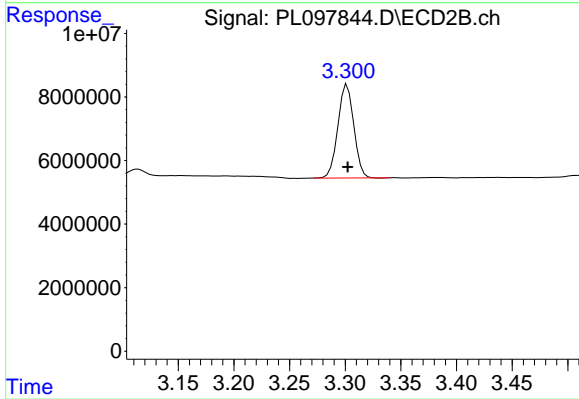
Instrument :
 ECD_L
 ClientSampleId :



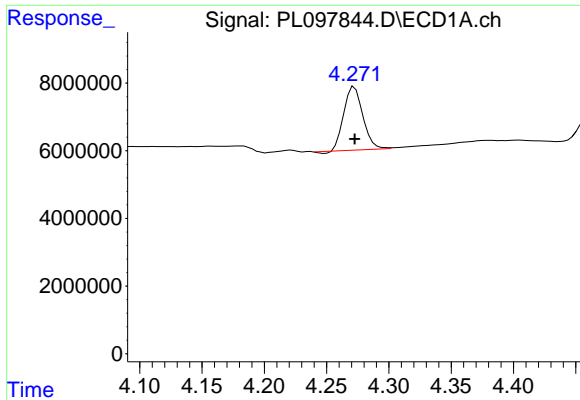
#1 Tetrachloro-m-xylene
 R.T.: 2.800 min
 Delta R.T.: 0.000 min
 Response: 157400882
 Conc: 22.53 ng/ml



#2 alpha-BHC
 R.T.: 3.944 min
 Delta R.T.: 0.000 min
 Response: 22868522
 Conc: 2.70 ng/ml

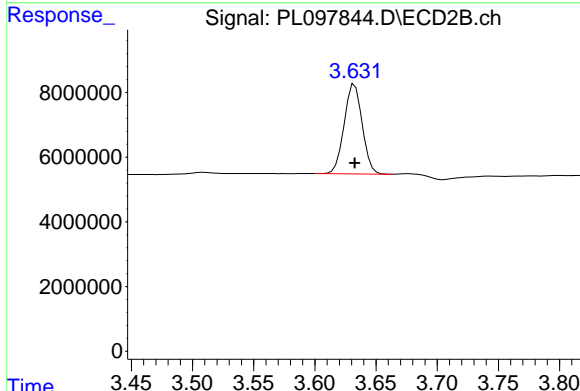


#2 alpha-BHC
 R.T.: 3.302 min
 Delta R.T.: 0.000 min
 Response: 29275434
 Conc: 2.55 ng/ml

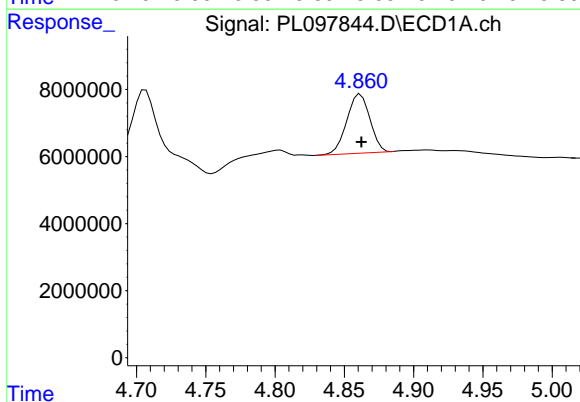


#3 gamma-BHC (Lindane)
 R.T.: 4.272 min
 Delta R.T.: 0.000 min
 Response: 19898202
 Conc: 2.48 ng/ml

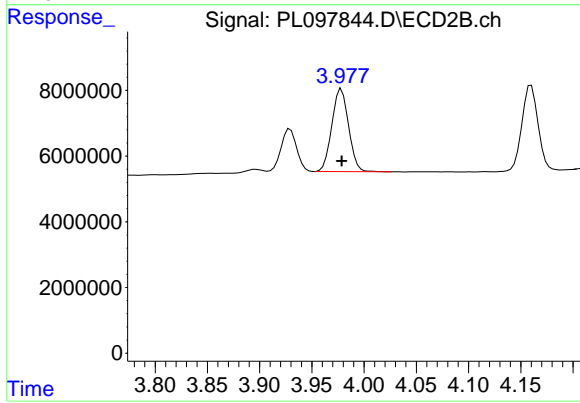
Instrument :
 ECD_L
 ClientSampleId :



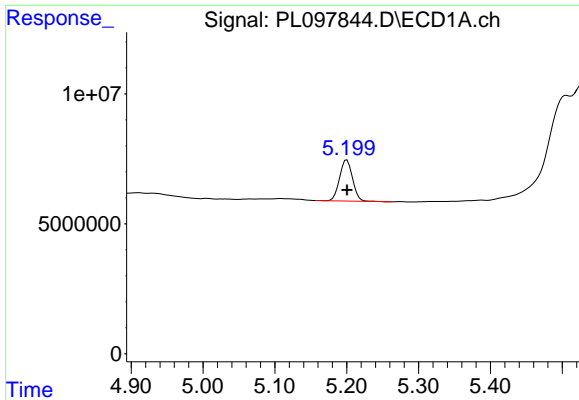
#3 gamma-BHC (Lindane)
 R.T.: 3.633 min
 Delta R.T.: 0.000 min
 Response: 28534948
 Conc: 2.65 ng/ml



#4 Heptachlor
 R.T.: 4.862 min
 Delta R.T.: 0.000 min
 Response: 20521240
 Conc: 2.58 ng/ml

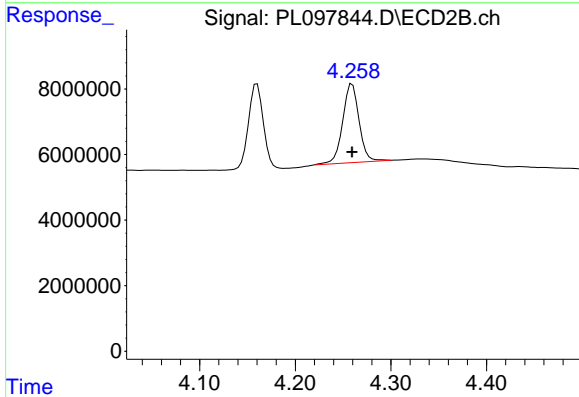


#4 Heptachlor
 R.T.: 3.978 min
 Delta R.T.: 0.000 min
 Response: 28129583
 Conc: 2.71 ng/ml

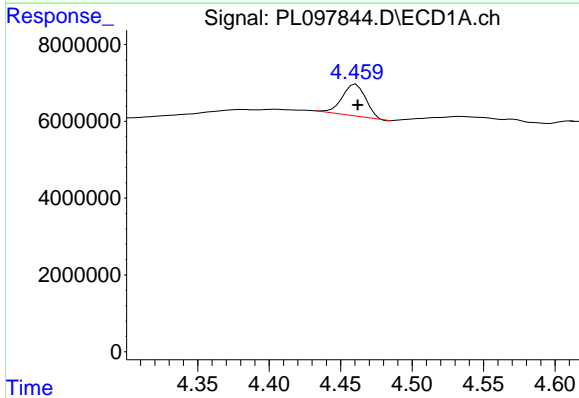


#5 Aldrin
 R.T.: 5.200 min
 Delta R.T.: 0.000 min
 Response: 19891787
 Conc: 2.75 ng/ml

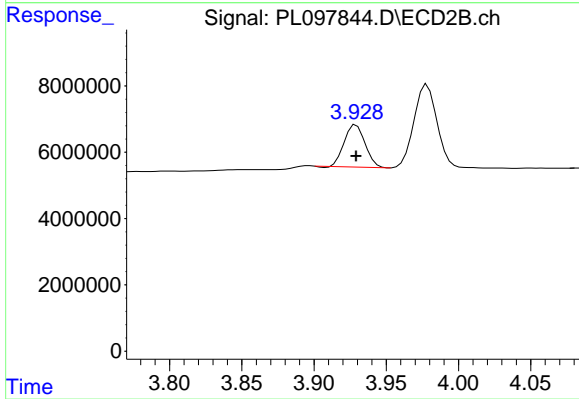
Instrument :
 ECD_L
 ClientSampleId :



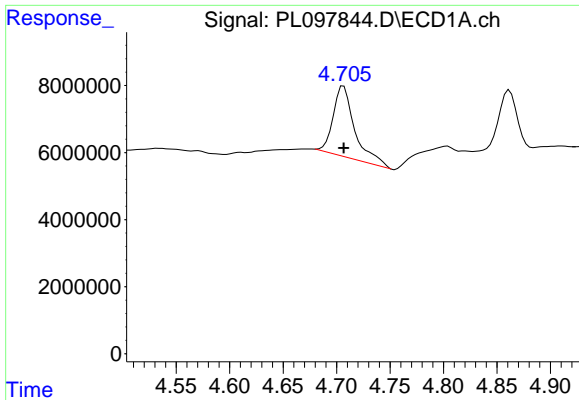
#5 Aldrin
 R.T.: 4.260 min
 Delta R.T.: 0.000 min
 Response: 28900770
 Conc: 2.92 ng/ml



#6 beta-BHC
 R.T.: 4.461 min
 Delta R.T.: -0.001 min
 Response: 9558100
 Conc: 2.85 ng/ml



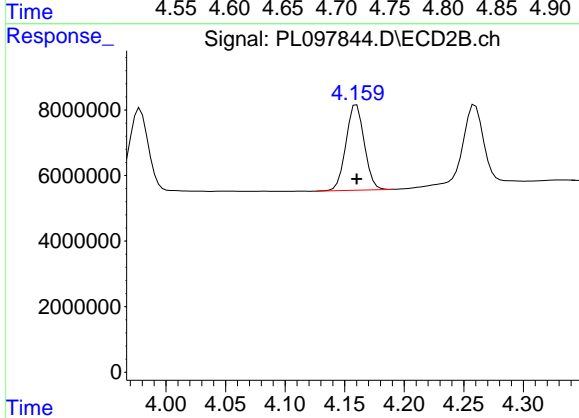
#6 beta-BHC
 R.T.: 3.929 min
 Delta R.T.: 0.000 min
 Response: 12679801
 Conc: 2.73 ng/ml



#7 delta-BHC

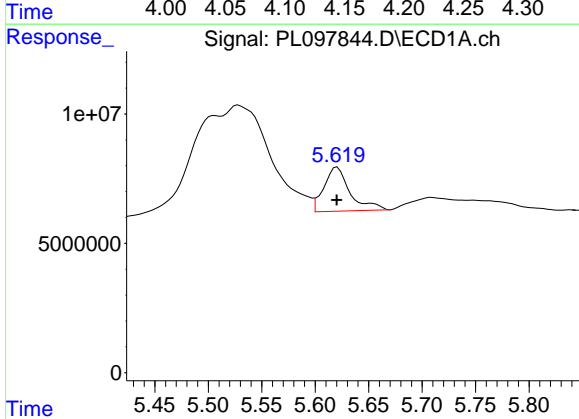
R.T.: 4.707 min
 Delta R.T.: 0.000 min
 Response: 28924576
 Conc: 3.73 ng/ml

Instrument :
 ECD_L
 ClientSampleId :



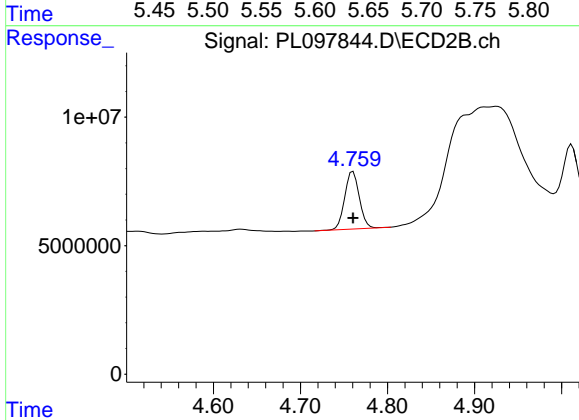
#7 delta-BHC

R.T.: 4.160 min
 Delta R.T.: 0.000 min
 Response: 27920101
 Conc: 2.61 ng/ml



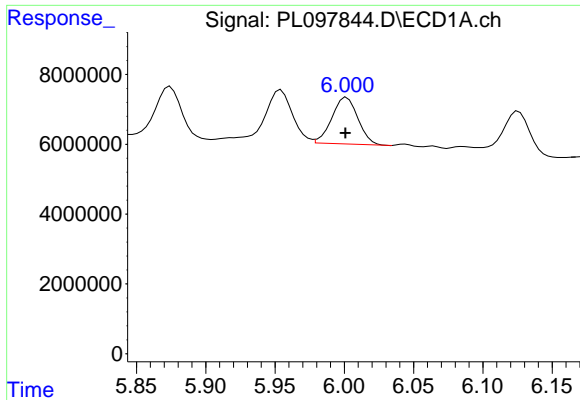
#8 Heptachlor epoxide

R.T.: 5.621 min
 Delta R.T.: 0.000 min
 Response: 28962229
 Conc: 4.35 ng/ml



#8 Heptachlor epoxide

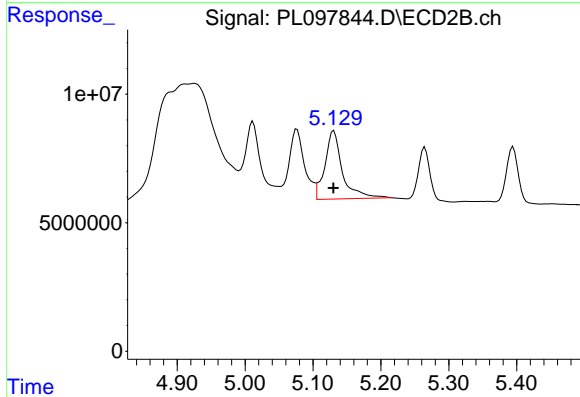
R.T.: 4.760 min
 Delta R.T.: 0.000 min
 Response: 26304331
 Conc: 2.92 ng/ml



#9 Endosulfan I

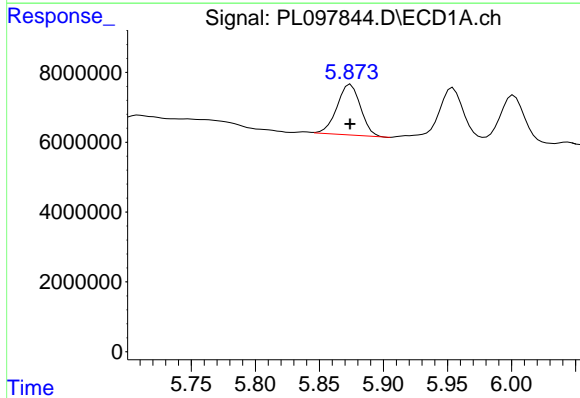
R.T.: 6.002 min
 Delta R.T.: 0.001 min
 Response: 17475170
 Conc: 2.97 ng/ml

Instrument :
 ECD_L
 ClientSampleId :



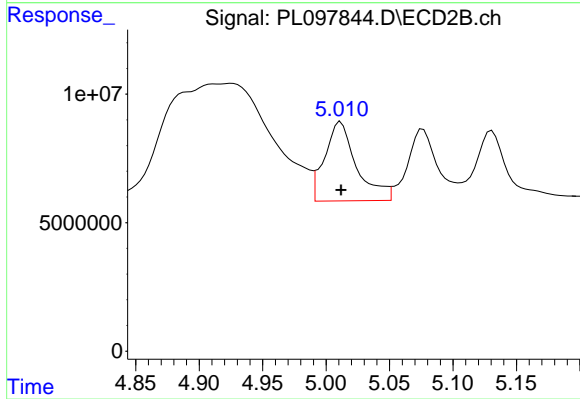
#9 Endosulfan I

R.T.: 5.131 min
 Delta R.T.: 0.000 min
 Response: 47945088
 Conc: 4.71 ng/ml



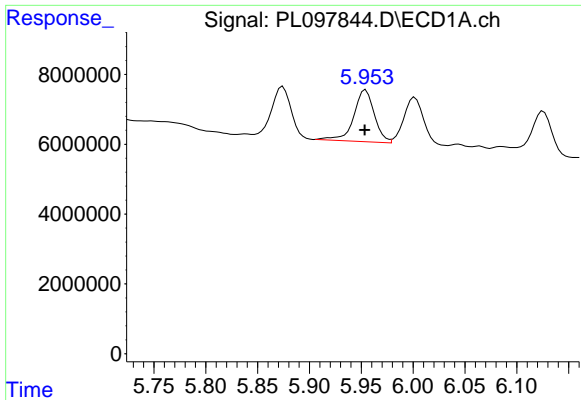
#10 gamma-Chlordane

R.T.: 5.874 min
 Delta R.T.: 0.000 min
 Response: 18565756
 Conc: 2.86 ng/ml



#10 gamma-Chlordane

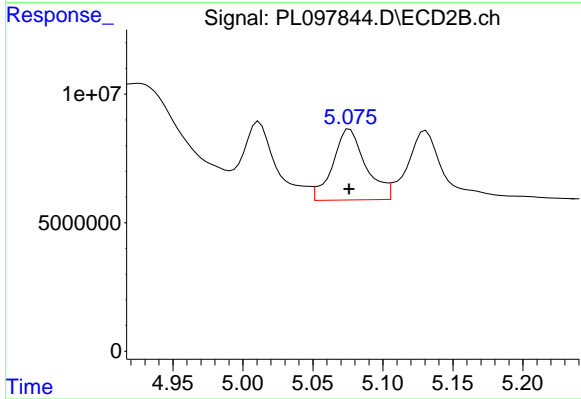
R.T.: 5.012 min
 Delta R.T.: 0.000 min
 Response: 54022013
 Conc: 5.30 ng/ml



#11 alpha-Chlordane

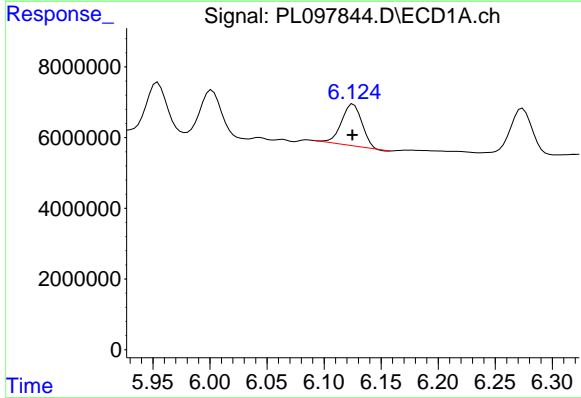
R.T.: 5.954 min
 Delta R.T.: 0.000 min
 Response: 20584536
 Conc: 3.17 ng/ml

Instrument :
 ECD_L
 ClientSampleId :



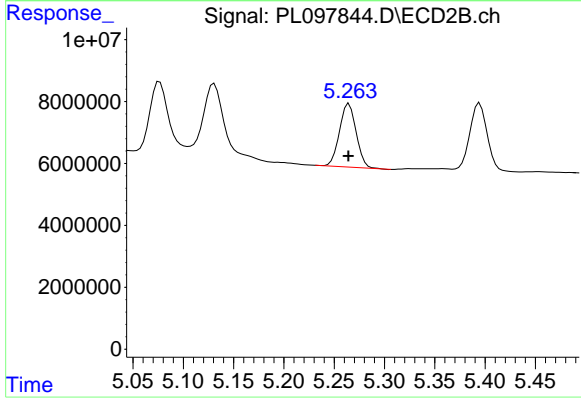
#11 alpha-Chlordane

R.T.: 5.076 min
 Delta R.T.: 0.000 min
 Response: 45349590
 Conc: 4.42 ng/ml



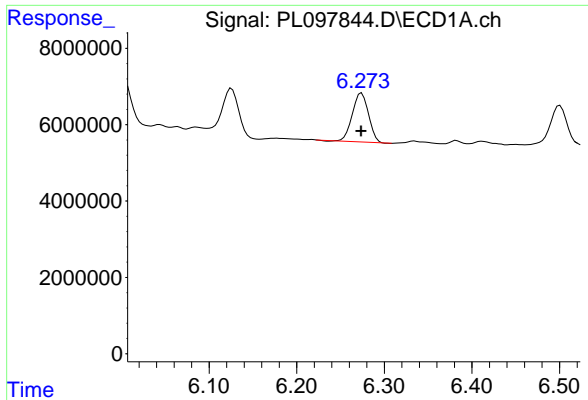
#12 4,4'-DDE

R.T.: 6.126 min
 Delta R.T.: 0.000 min
 Response: 14760107
 Conc: 2.51 ng/ml



#12 4,4'-DDE

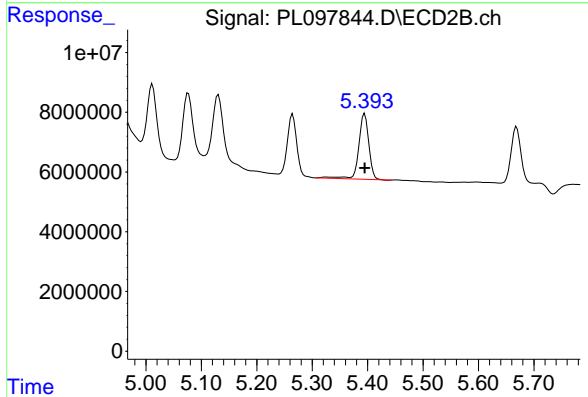
R.T.: 5.265 min
 Delta R.T.: 0.000 min
 Response: 23692229
 Conc: 2.69 ng/ml



#13 Dieldrin

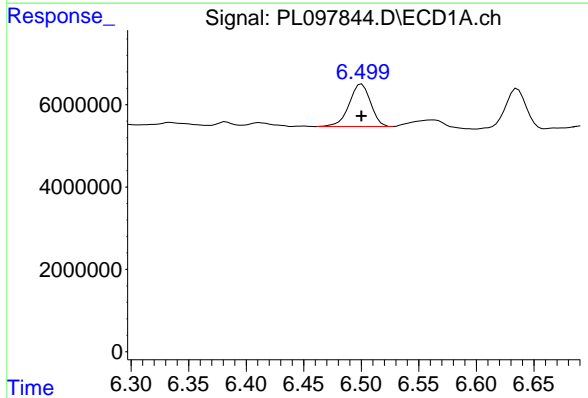
R.T.: 6.274 min
 Delta R.T.: 0.000 min
 Response: 16535303
 Conc: 2.69 ng/ml

Instrument :
 ECD_L
 ClientSampleId :



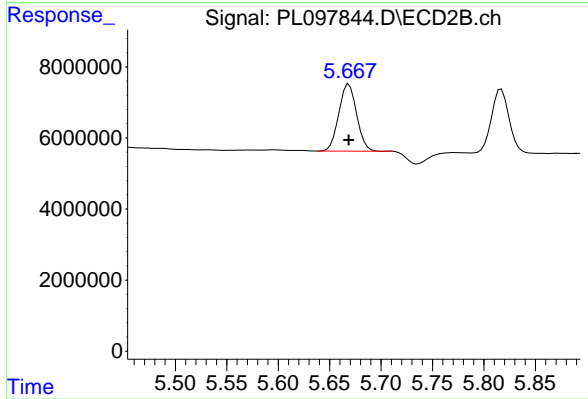
#13 Dieldrin

R.T.: 5.395 min
 Delta R.T.: 0.000 min
 Response: 27578062
 Conc: 2.94 ng/ml



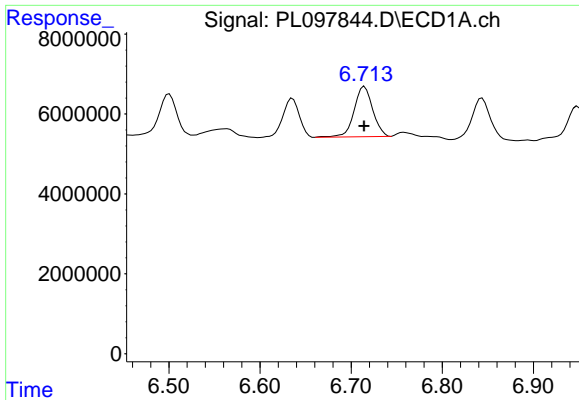
#14 Endrin

R.T.: 6.500 min
 Delta R.T.: 0.000 min
 Response: 13426469
 Conc: 2.59 ng/ml



#14 Endrin

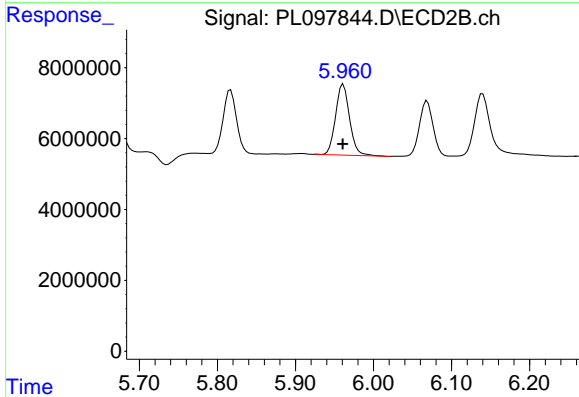
R.T.: 5.669 min
 Delta R.T.: 0.000 min
 Response: 22715314
 Conc: 2.72 ng/ml



#15 Endosulfan II

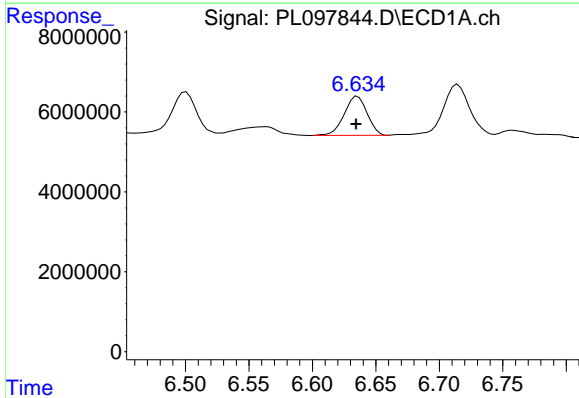
R.T.: 6.715 min
 Delta R.T.: 0.000 min
 Response: 17761763
 Conc: 3.48 ng/ml

Instrument :
 ECD_L
 ClientSampleId :



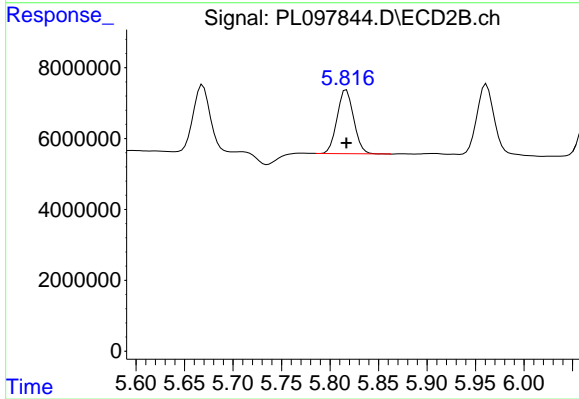
#15 Endosulfan II

R.T.: 5.961 min
 Delta R.T.: 0.000 min
 Response: 24999355
 Conc: 3.02 ng/ml



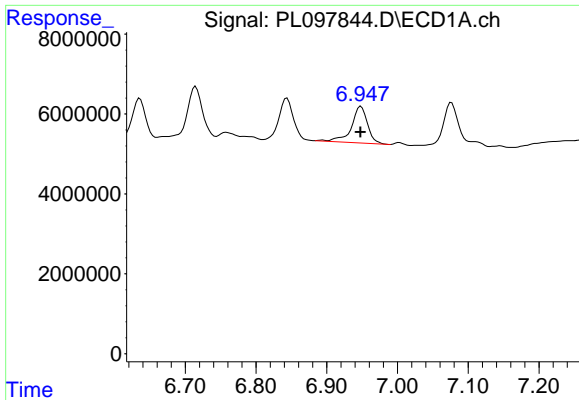
#16 4,4'-DDD

R.T.: 6.636 min
 Delta R.T.: 0.001 min
 Response: 12294012
 Conc: 2.65 ng/ml



#16 4,4'-DDD

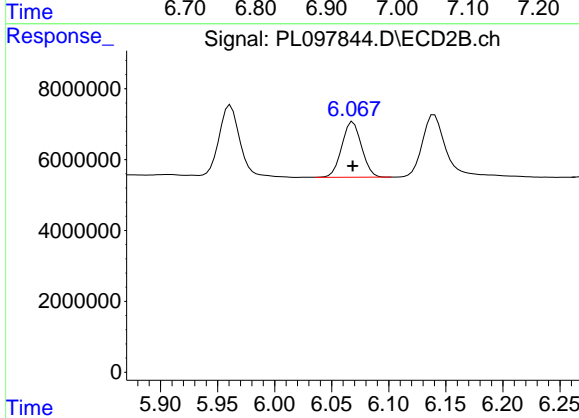
R.T.: 5.817 min
 Delta R.T.: 0.000 min
 Response: 21417906
 Conc: 2.86 ng/ml



#17 4,4'-DDT

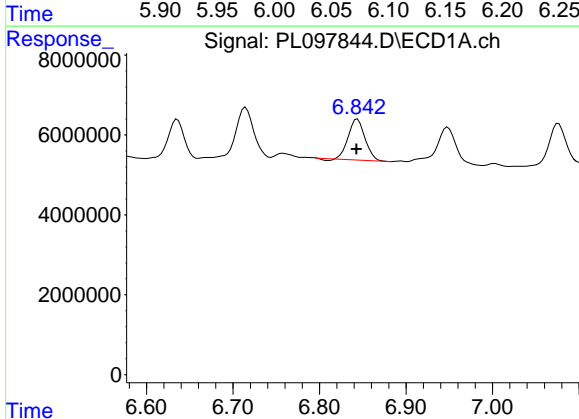
R.T.: 6.948 min
 Delta R.T.: 0.000 min
 Response: 14393703
 Conc: 3.00 ng/ml

Instrument :
 ECD_L
 ClientSampleId :



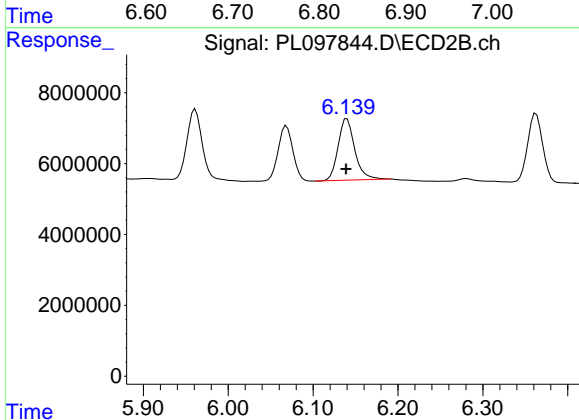
#17 4,4'-DDT

R.T.: 6.069 min
 Delta R.T.: 0.000 min
 Response: 18929721
 Conc: 2.47 ng/ml



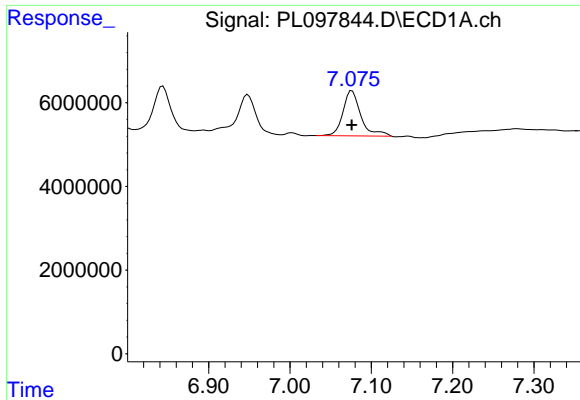
#18 Endrin aldehyde

R.T.: 6.844 min
 Delta R.T.: 0.001 min
 Response: 13730909
 Conc: 3.48 ng/ml



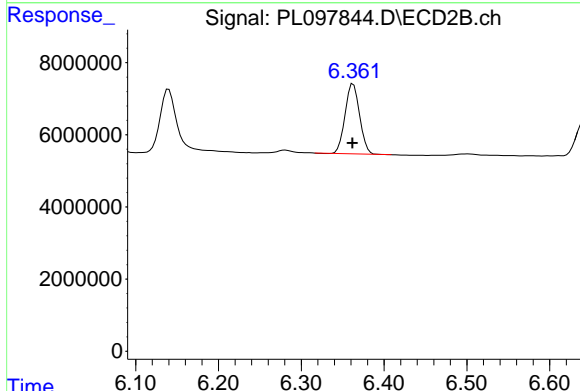
#18 Endrin aldehyde

R.T.: 6.140 min
 Delta R.T.: 0.000 min
 Response: 23687848
 Conc: 3.71 ng/ml

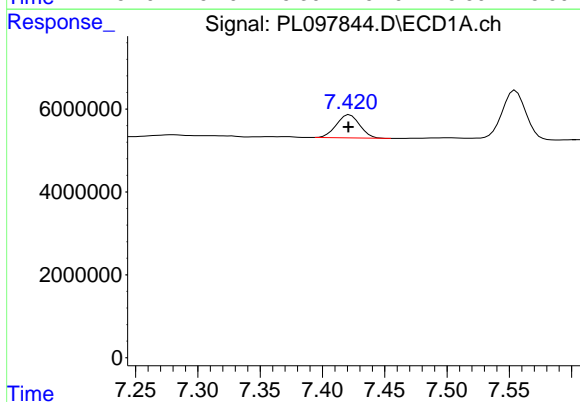


#19 Endosulfan Sulfate
 R.T.: 7.076 min
 Delta R.T.: 0.000 min
 Response: 16459159
 Conc: 3.32 ng/ml

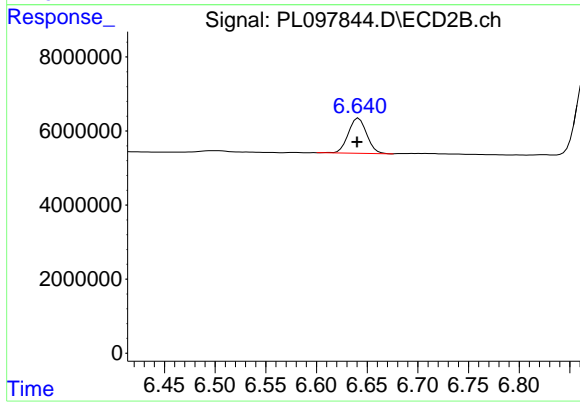
Instrument :
 ECD_L
 ClientSampleId :



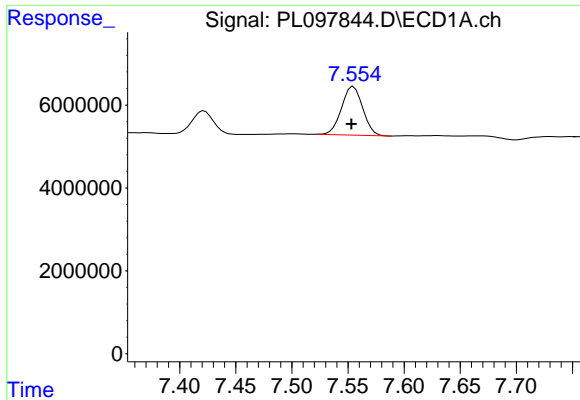
#19 Endosulfan Sulfate
 R.T.: 6.363 min
 Delta R.T.: 0.000 min
 Response: 23744555
 Conc: 2.92 ng/ml



#20 Methoxychlor
 R.T.: 7.422 min
 Delta R.T.: 0.001 min
 Response: 7334162
 Conc: 2.91 ng/ml



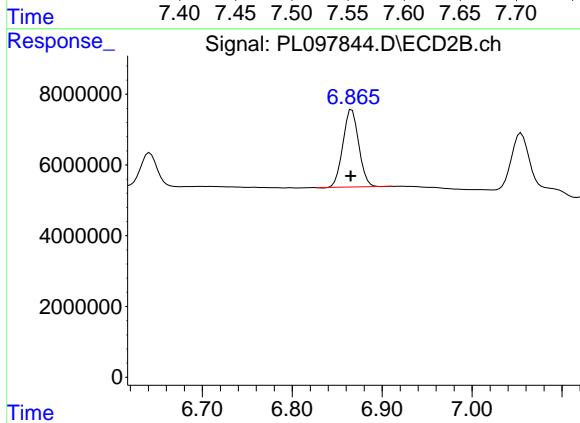
#20 Methoxychlor
 R.T.: 6.642 min
 Delta R.T.: 0.002 min
 Response: 11976276
 Conc: 2.87 ng/ml



#21 Endrin ketone

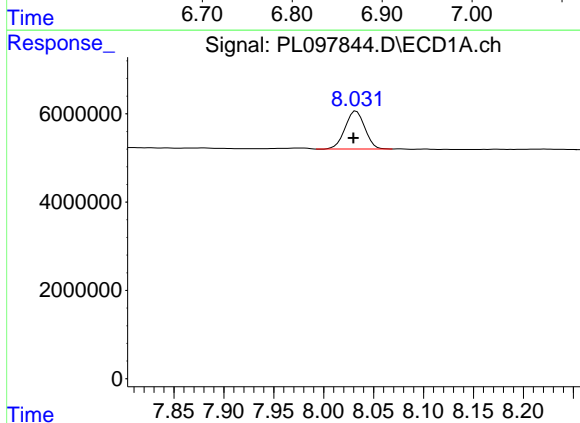
R.T.: 7.555 min
 Delta R.T.: 0.002 min
 Response: 15465936
 Conc: 2.98 ng/ml

Instrument :
 ECD_L
 ClientSampleId :



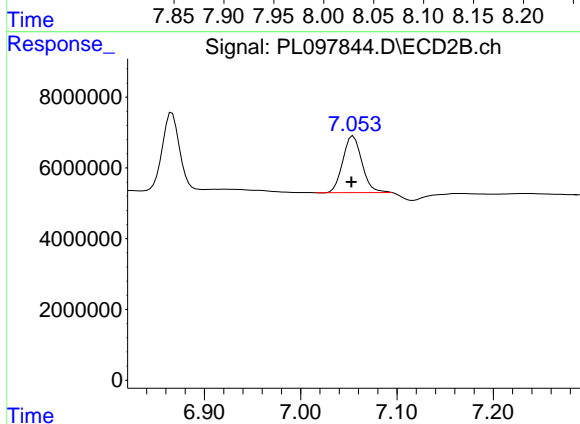
#21 Endrin ketone

R.T.: 6.866 min
 Delta R.T.: 0.001 min
 Response: 26841952
 Conc: 3.01 ng/ml



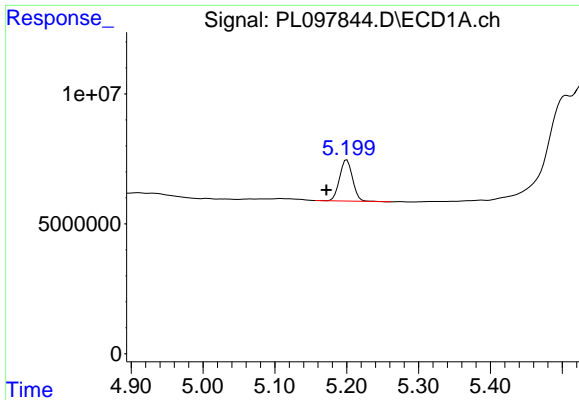
#22 Mirex

R.T.: 8.033 min
 Delta R.T.: 0.003 min
 Response: 11760608
 Conc: 3.41 ng/ml



#22 Mirex

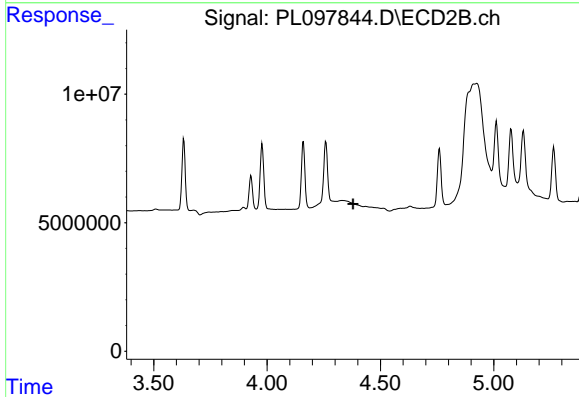
R.T.: 7.055 min
 Delta R.T.: 0.002 min
 Response: 21990661
 Conc: 3.41 ng/ml



#24 Chlordane-2

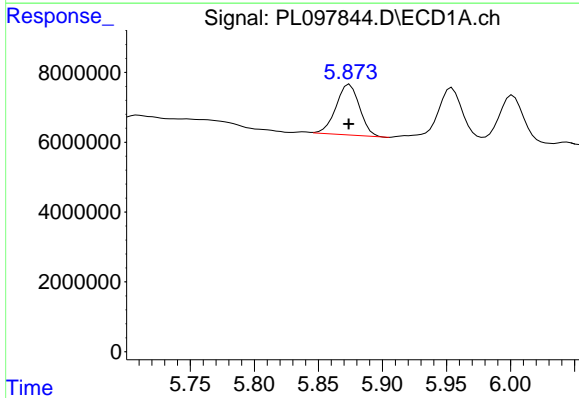
R.T.: 5.200 min
 Delta R.T.: 0.029 min
 Response: 19891787
 Conc: 82.34 ng/ml

Instrument :
 ECD_L
 ClientSampleId :



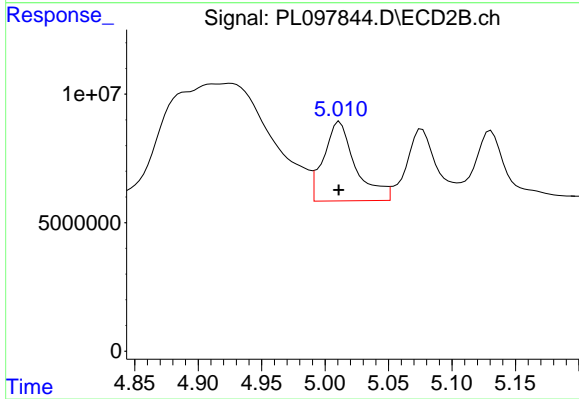
#24 Chlordane-2

R.T.: 0.000 min
 Exp R.T. : 4.379 min
 Response: 0
 Conc: N.D.



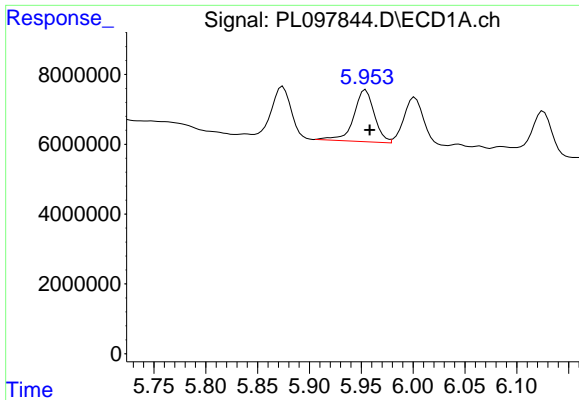
#25 Chlordane-3

R.T.: 5.874 min
 Delta R.T.: 0.000 min
 Response: 18565756
 Conc: 21.04 ng/ml



#25 Chlordane-3

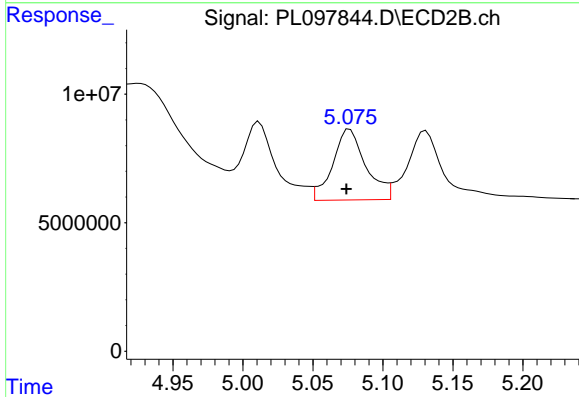
R.T.: 5.012 min
 Delta R.T.: 0.000 min
 Response: 54022013
 Conc: 61.87 ng/ml



#26 Chlordane-4

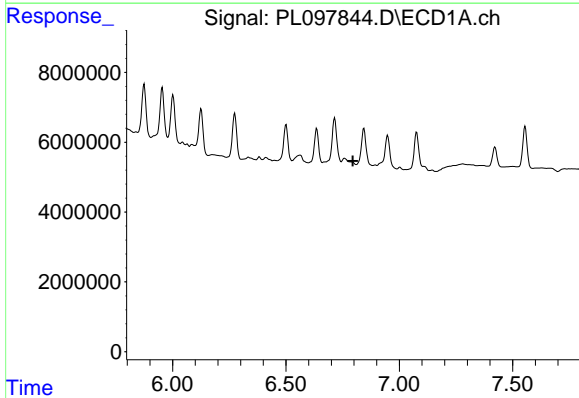
R.T.: 5.954 min
 Delta R.T.: -0.004 min
 Response: 20584536
 Conc: 19.44 ng/ml

Instrument :
 ECD_L
 ClientSampleId :



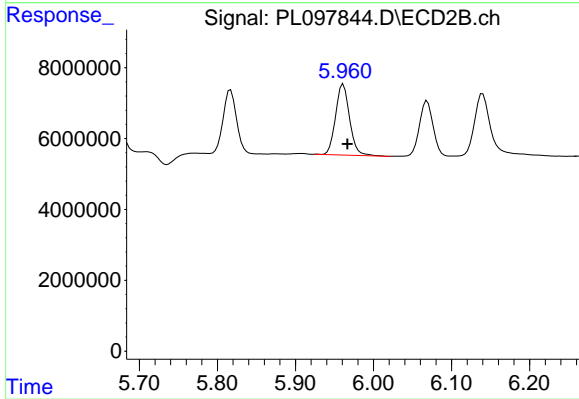
#26 Chlordane-4

R.T.: 5.076 min
 Delta R.T.: 0.002 min
 Response: 45349590
 Conc: 56.17 ng/ml



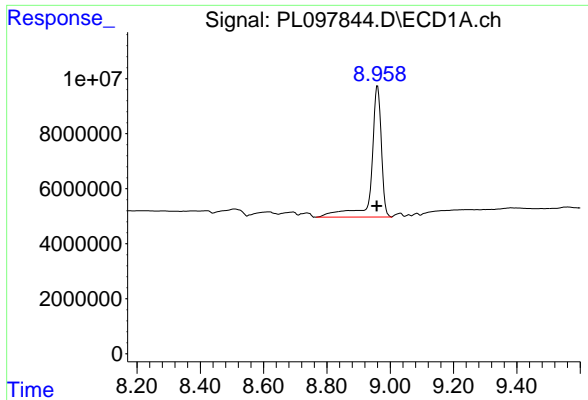
#27 Chlordane-5

R.T.: 0.000 min
 Exp R.T. : 6.794 min
 Response: 0
 Conc: N.D.



#27 Chlordane-5

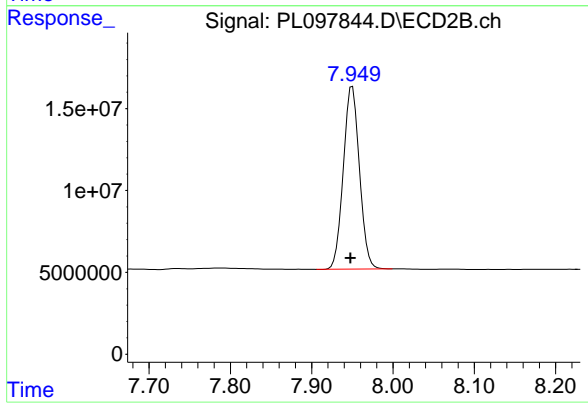
R.T.: 5.961 min
 Delta R.T.: -0.005 min
 Response: 24999355
 Conc: 75.99 ng/ml



#28 Decachlorobiphenyl

R.T.: 8.960 min
Delta R.T.: 0.003 min
Response: 105026002
Conc: 27.64 ng/ml

Instrument :
ECD_L
ClientSampleId :



#28 Decachlorobiphenyl

R.T.: 7.950 min
Delta R.T.: 0.002 min
Response: 153493015
Conc: 23.34 ng/ml