

Data Path : Z:\pestpcbsrv\HPCHEM1\ECD_L\Data\PL121125\
 Data File : PL097846.D
 Signal(s) : Signal #1: ECD1A.ch Signal #2: ECD2B.ch
 Acq On : 11 Dec 2025 18:19
 Operator : AR\AJ
 Sample : I.BLK
 Misc :
 ALS Vial : 2 Sample Multiplier: 1

Instrument :
 ECD_L
 ClientSampleId :

Integration File signal 1: autoint1.e
 Integration File signal 2: autoint2.e
 Quant Time: Dec 12 03:11:58 2025
 Quant Method : Z:\pestpcbsrv\HPCHEM1\ECD_L\methods\PL120925.M
 Quant Title : GC Extractables
 QLast Update : Tue Dec 09 14:16:16 2025
 Response via : Initial Calibration
 Integrator: ChemStation

Volume Inj. : 1 µl
 Signal #1 Phase : ZB-MR1 Signal #2 Phase: ZB-MR2
 Signal #1 Info : 30M x 0.32mm x0.5 Signal #2 Info : 30M x 0.32mm x0.25µm

Compound	RT#1	RT#2	Resp#1	Resp#2	ng/ml	ng/ml

System Monitoring Compounds						
1) SA Tetrachlo...	3.497	2.800	120.6E6	166.7E6	23.905	23.864
28) SA Decachlor...	8.959	7.950	94190035	163.8E6	24.790	24.902
Target Compounds						
8) B Heptachlo...	5.614	0.000	32447316	0	4.877	N.D. #
11) B alpha-Chl...	0.000	5.095f	0	30782859	N.D.	3.002 #
14) MA Endrin	0.000	5.680	0	21241403	N.D.	2.542 #
15) B Endosulfa...	6.708	0.000	4795301	0	0.938	N.D. #
26) Chlordane-4	0.000	5.095f	0	30782859	N.D.	38.131 #

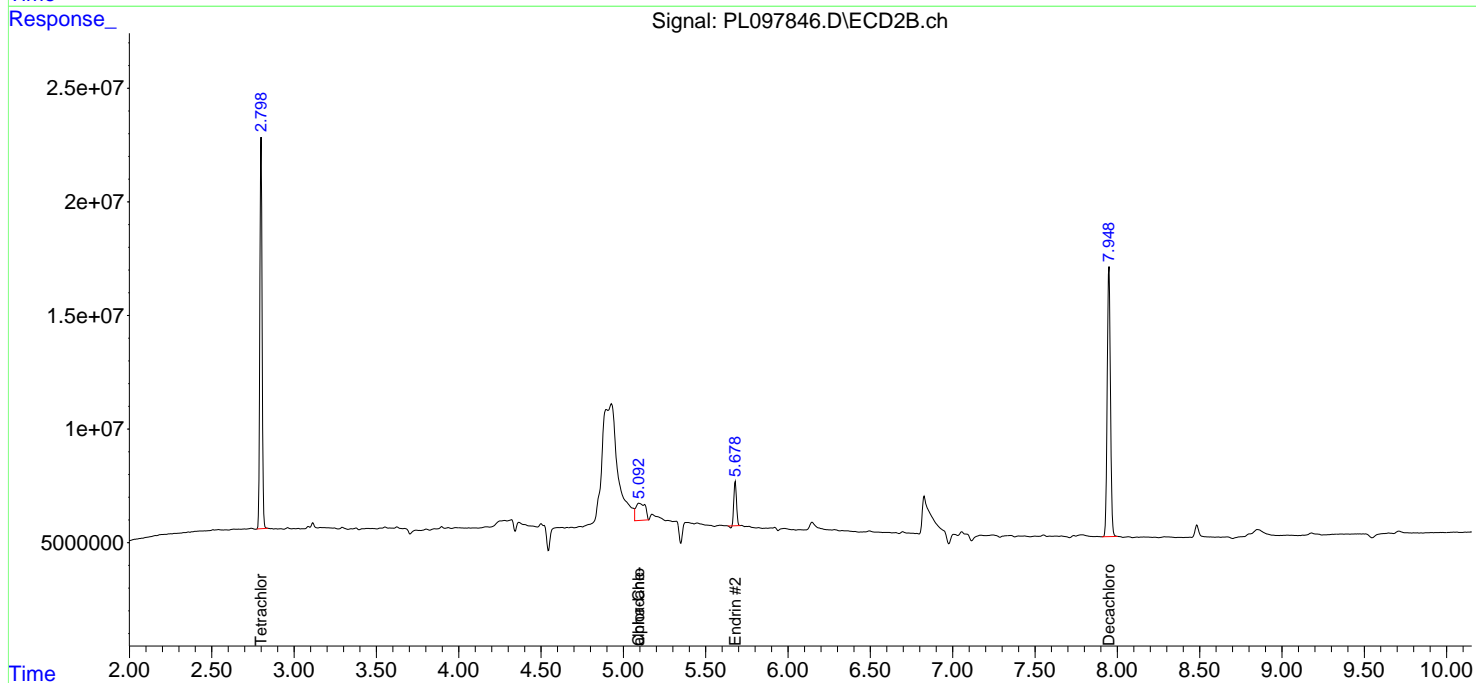
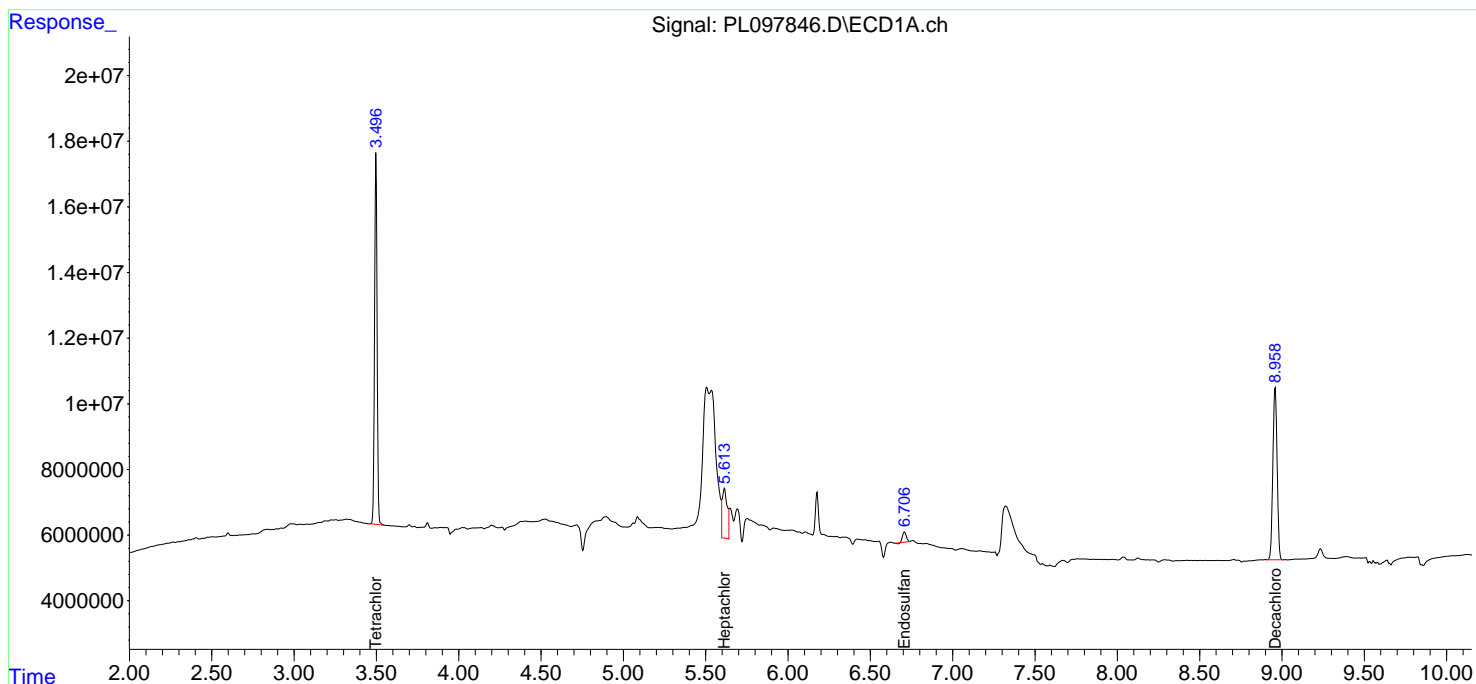
(f)=RT Delta > 1/2 Window (#)=Amounts differ by > 25% (m)=manual int.

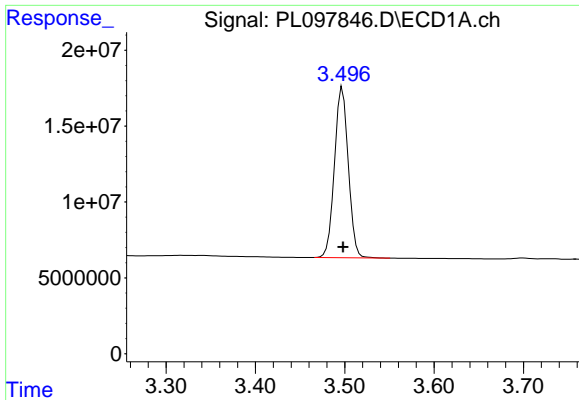
Data Path : Z:\pestpcbsrv\HPCHEM1\ECD_L\Data\PL121125\
 Data File : PL097846.D
 Signal(s) : Signal #1: ECD1A.ch Signal #2: ECD2B.ch
 Acq On : 11 Dec 2025 18:19
 Operator : AR\AJ
 Sample : I.BLK
 Misc :
 ALS Vial : 2 Sample Multiplier: 1

Instrument :
 ECD_L
 ClientSampleId :

Integration File signal 1: autoint1.e
 Integration File signal 2: autoint2.e
 Quant Time: Dec 12 03:11:58 2025
 Quant Method : Z:\pestpcbsrv\HPCHEM1\ECD_L\methods\PL120925.M
 Quant Title : GC Extractables
 QLast Update : Tue Dec 09 14:16:16 2025
 Response via : Initial Calibration
 Integrator: ChemStation

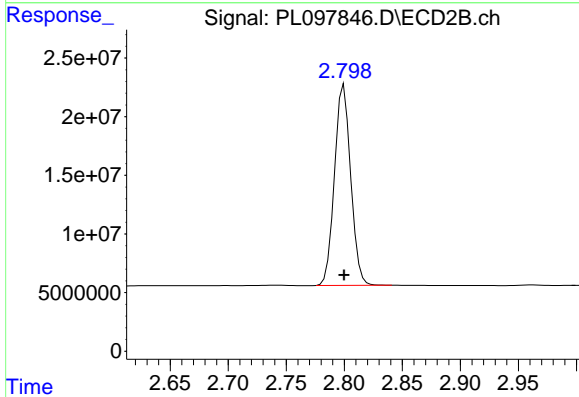
Volume Inj. : 1 µl
 Signal #1 Phase : ZB-MR1 Signal #2 Phase: ZB-MR2
 Signal #1 Info : 30M x 0.32mm x0.5 Signal #2 Info : 30M x 0.32mm x0.25µm



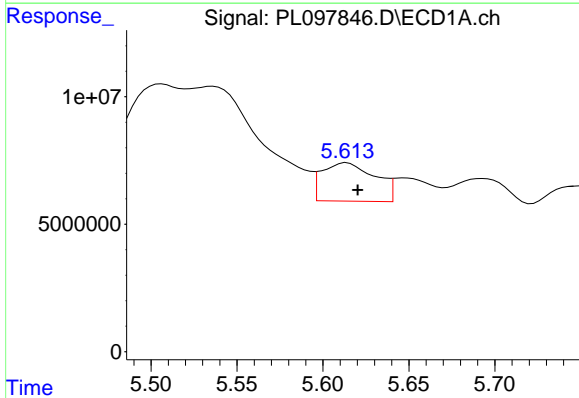


#1 Tetrachloro-m-xylene
 R.T.: 3.497 min
 Delta R.T.: 0.000 min
 Response: 120649636
 Conc: 23.91 ng/ml

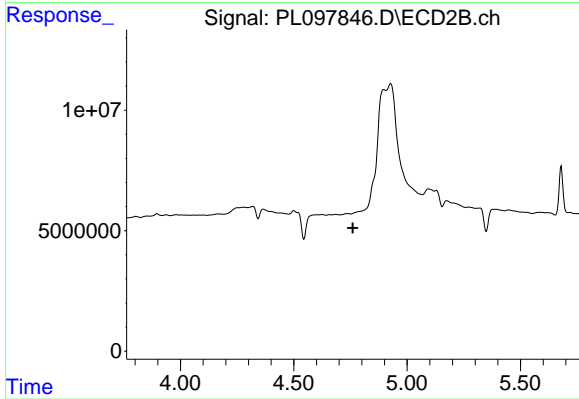
Instrument :
 ECD_L
 ClientSampleId :



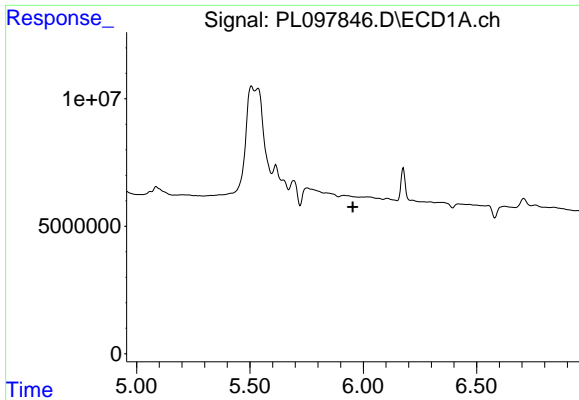
#1 Tetrachloro-m-xylene
 R.T.: 2.800 min
 Delta R.T.: 0.000 min
 Response: 166693847
 Conc: 23.86 ng/ml



#8 Heptachlor epoxide
 R.T.: 5.614 min
 Delta R.T.: -0.006 min
 Response: 32447316
 Conc: 4.88 ng/ml



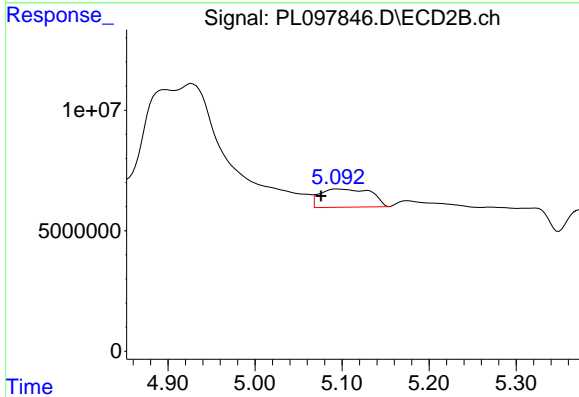
#8 Heptachlor epoxide
 R.T.: 0.000 min
 Exp R.T. : 4.761 min
 Response: 0
 Conc: N.D.



#11 alpha-Chlordane

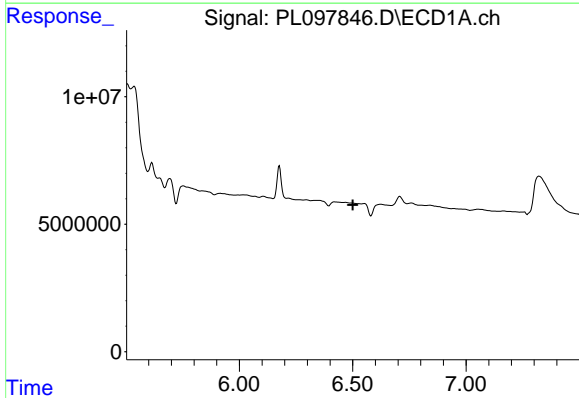
R.T.: 0.000 min
 Exp R.T. : 5.953 min
 Response: 0
 Conc: N.D.

Instrument :
 ECD_L
 ClientSampleId :



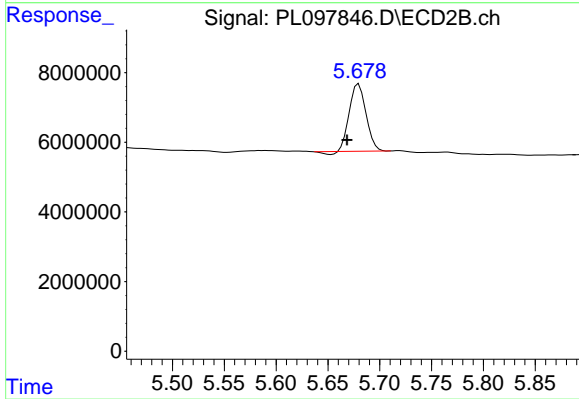
#11 alpha-Chlordane

R.T.: 5.095 min
 Delta R.T.: 0.019 min
 Response: 30782859
 Conc: 3.00 ng/ml



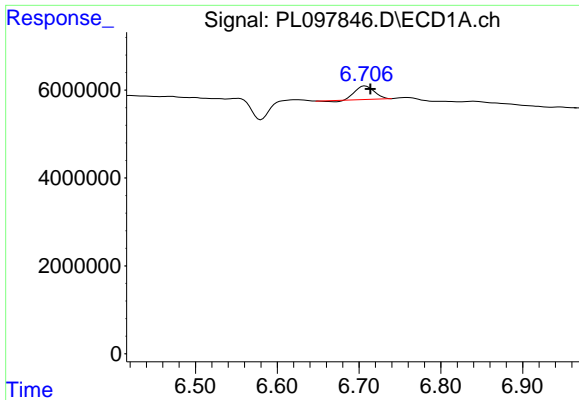
#14 Endrin

R.T.: 0.000 min
 Exp R.T. : 6.500 min
 Response: 0
 Conc: N.D.



#14 Endrin

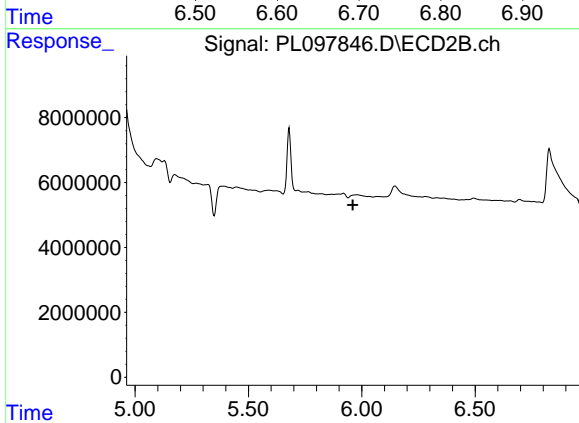
R.T.: 5.680 min
 Delta R.T.: 0.011 min
 Response: 21241403
 Conc: 2.54 ng/ml



#15 Endosulfan II

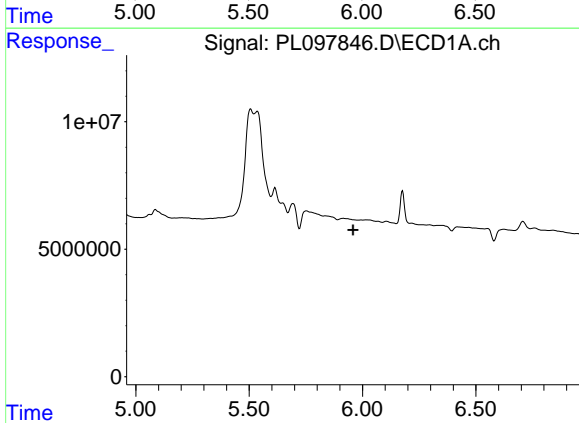
R.T.: 6.708 min
 Delta R.T.: -0.006 min
 Response: 4795301
 Conc: 0.94 ng/ml

Instrument :
 ECD_L
 ClientSampleId :



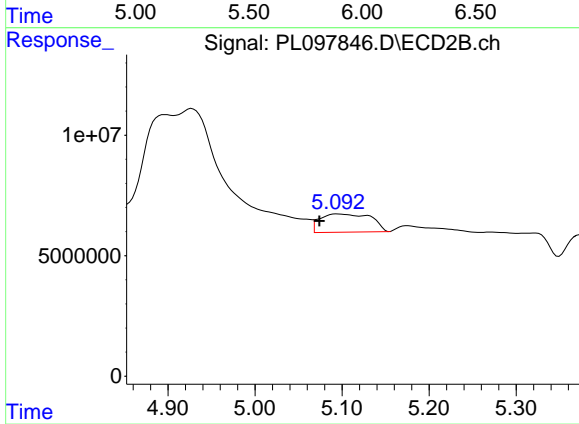
#15 Endosulfan II

R.T.: 0.000 min
 Exp R.T. : 5.961 min
 Response: 0
 Conc: N.D.



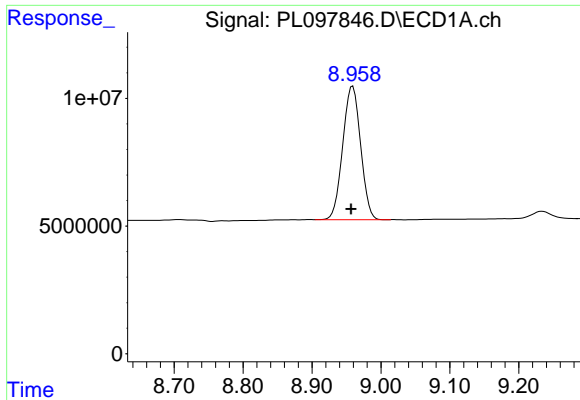
#26 Chlordane-4

R.T.: 0.000 min
 Exp R.T. : 5.958 min
 Response: 0
 Conc: N.D.



#26 Chlordane-4

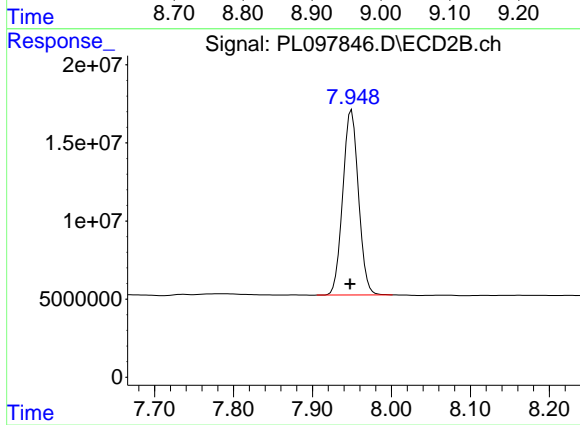
R.T.: 5.095 min
 Delta R.T.: 0.021 min
 Response: 30782859
 Conc: 38.13 ng/ml



#28 Decachlorobiphenyl

R.T.: 8.959 min
Delta R.T.: 0.002 min
Response: 94190035
Conc: 24.79 ng/ml

Instrument :
ECD_L
ClientSampleId :



#28 Decachlorobiphenyl

R.T.: 7.950 min
Delta R.T.: 0.002 min
Response: 163758616
Conc: 24.90 ng/ml