

Data Path : Z:\pestpcbsrv\HPCHEM1\ECD_L\Data\PL121125\
 Data File : PL097847-1.D
 Signal(s) : Signal #1: ECD1A.ch Signal #2: ECD2B.ch
 Acq On : 11 Dec 2025 19:00
 Operator : AR\AJ
 Sample : PSTDCCC050
 Misc :
 ALS Vial : 4 Sample Multiplier: 1

Instrument :
 ECD_L
 ClientSampleId :

Integration File signal 1: autoint1.e
 Integration File signal 2: autoint2.e
 Quant Time: Dec 12 03:12:29 2025
 Quant Method : Z:\pestpcbsrv\HPCHEM1\ECD_L\methods\PL120925.M
 Quant Title : GC Extractables
 QLast Update : Tue Dec 09 14:16:16 2025
 Response via : Initial Calibration
 Integrator: ChemStation

Volume Inj. : 1 µl
 Signal #1 Phase : ZB-MR2 Signal #2 Phase: ZB-MR2
 Signal #1 Info : 30M x 0.32mm x0.5 Signal #2 Info : 30M x 0.32mm x0.25µm

	Compound	RT#1	RT#2	Resp#1	Resp#2	ng/ml	ng/ml

System Monitoring Compounds							
1)	SA Tetrachlo...	3.497	2.799	245.6E6	347.6E6	48.654	49.761
28)	SA Decachlor...	8.958	7.948	176.0E6	308.7E6	46.323	46.948
Target Compounds							
2)	A alpha-BHC	3.944	3.302	422.7E6	582.0E6	49.980	50.724
3)	MA gamma-BHC...	4.271	3.632	396.9E6	541.4E6	49.512	50.333
4)	MA Heptachlor	4.861	3.978	387.2E6	514.4E6	48.632	49.484
5)	MB Aldrin	5.199	4.259	355.6E6	497.6E6	49.091	50.316
6)	B beta-BHC	4.461	3.929	163.3E6	225.9E6	48.775	48.733
7)	B delta-BHC	4.706	4.160	387.2E6	541.9E6	49.989	50.706
8)	Heptachlo...	5.619	4.760	337.7E6	437.1E6	50.752	48.551
9)	A Endosulfan I	6.001	5.130	293.9E6	411.0E6	49.914	40.342
10)	B gamma-Chl...	5.874	5.012	311.0E6	536.3E6	47.913	52.656
11)	B alpha-Chl...	5.954	5.076	318.6E6	514.9E6	49.063	50.206
12)	B 4,4'-DDE	6.125	5.264	287.0E6	503.7E6	48.864	57.170
13)	MA Dieldrin	6.273	5.394	334.1E6	515.9E6	54.443	55.057
14)	MA Endrin	6.499	5.670	261.4E6	484.0E6	50.464	57.914
15)	B Endosulfa...	6.714	5.961	260.2E6	417.9E6	50.924	50.494
16)	A 4,4'-DDD	6.634	5.817	236.7E6	386.0E6	51.104	51.462
17)	MA 4,4'-DDT	6.948	6.069	236.2E6	389.8E6	49.301	50.822
18)	B Endrin al...	6.843	6.139	194.4E6	314.7E6	49.334	49.282
19)	B Endosulfa...	7.076	6.362	247.9E6	407.0E6	50.005	49.996
20)	A Methoxychlor	7.420	6.641	109.6E6	208.6E6	43.532	49.914
21)	B Endrin ke...	7.554	6.865	248.8E6	377.6E6	47.885	42.326
22)	Mirex	8.031	7.054	171.2E6	309.0E6	49.646	47.865
24)	Chlordane-2	5.199f	4.374	355.6E6	-1826647	1472.068	N.D. #
25)	Chlordane-3	5.874	5.012	311.0E6	536.3E6	352.496	614.233 #
26)	Chlordane-4	5.954	5.076	318.6E6	514.9E6	300.848	637.755 #
27)	Chlordane-5	0.000	5.961	0	417.9E6	N.D.	1270.451 #

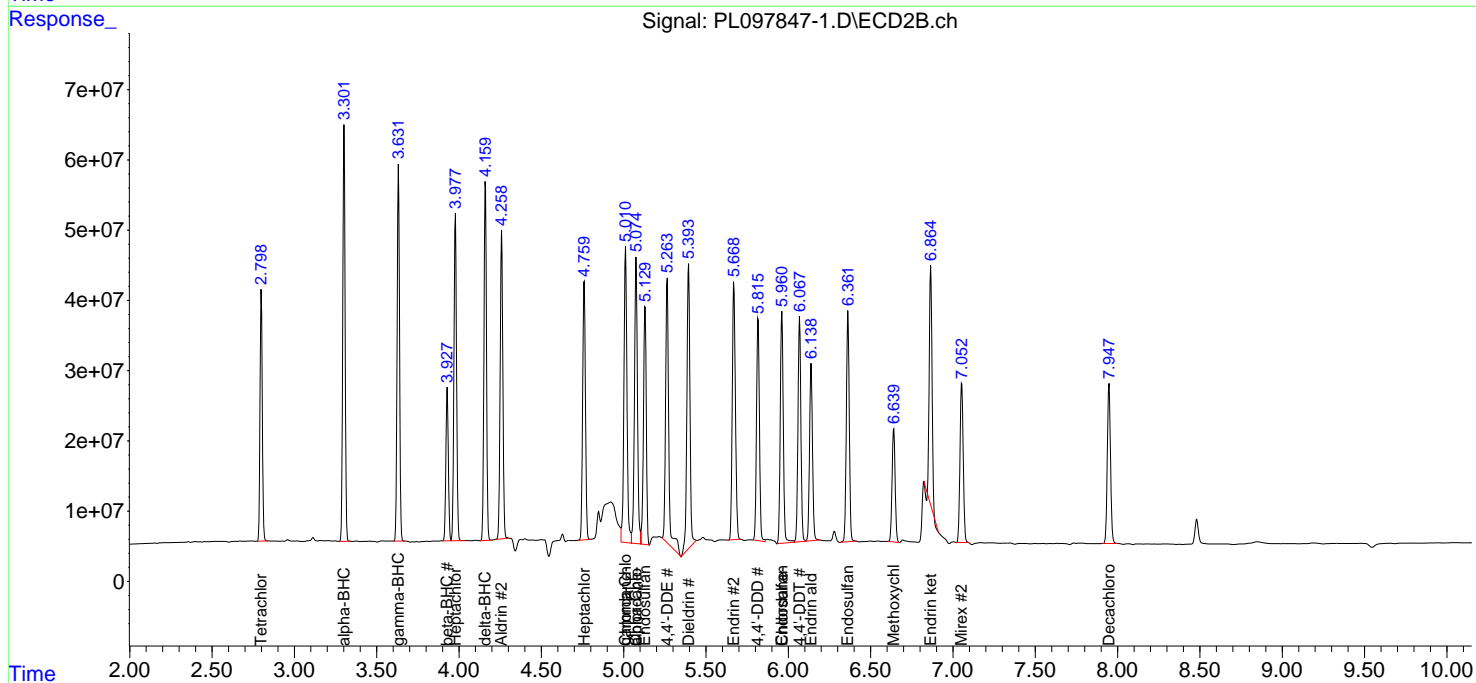
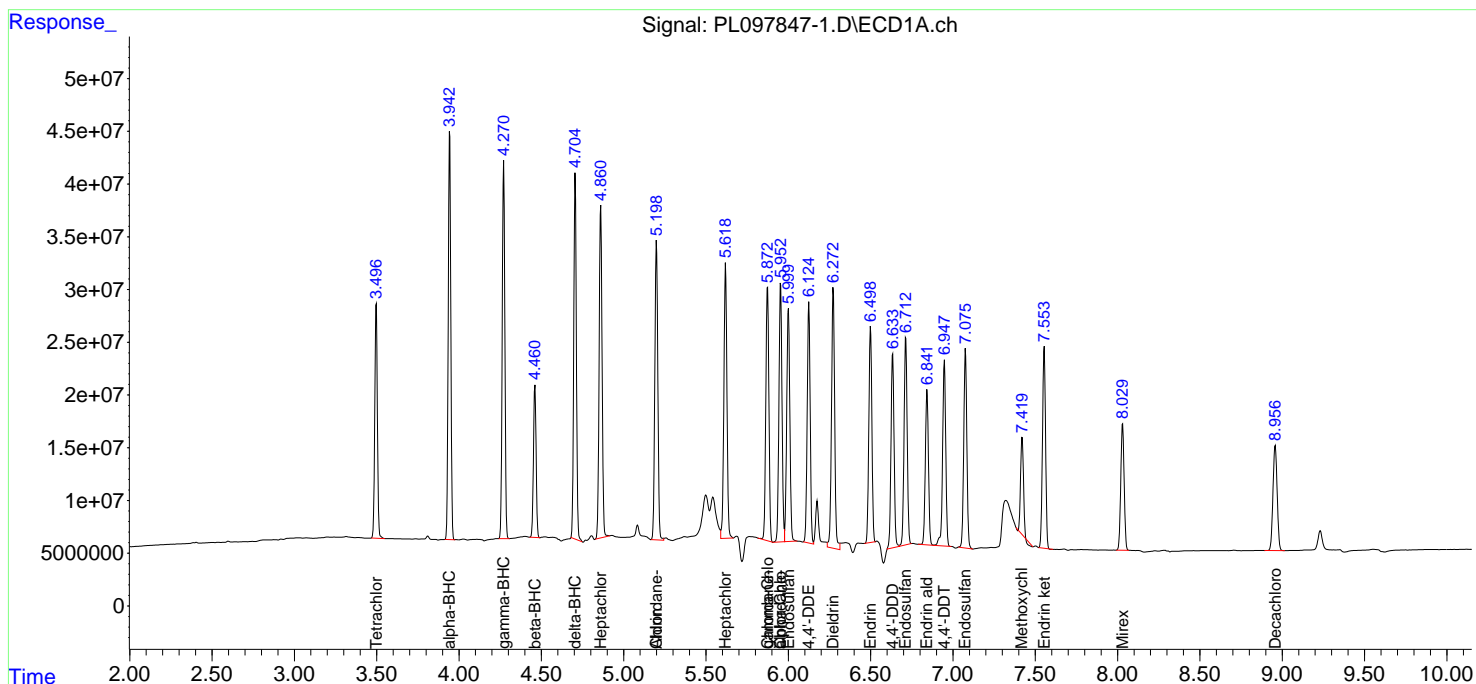
(f)=RT Delta > 1/2 Window (#)=Amounts differ by > 25% (m)=manual int.

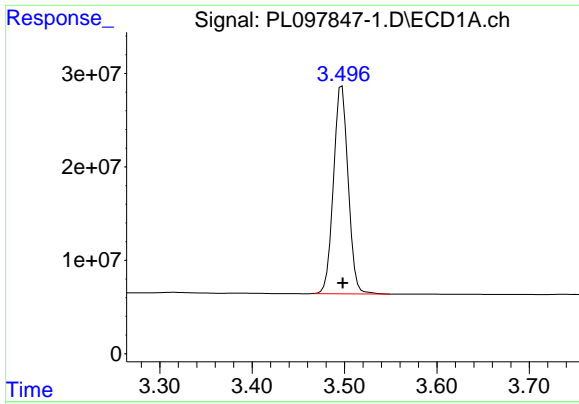
Data Path : Z:\pestpcbsrv\HPCHEM1\ECD_L\Data\PL121125\
 Data File : PL097847-1.D
 Signal(s) : Signal #1: ECD1A.ch Signal #2: ECD2B.ch
 Acq On : 11 Dec 2025 19:00
 Operator : AR\AJ
 Sample : PSTDCCC050
 Misc :
 ALS Vial : 4 Sample Multiplier: 1

Instrument :
 ECD_L
 ClientSampleId :

Integration File signal 1: autoint1.e
 Integration File signal 2: autoint2.e
 Quant Time: Dec 12 03:12:29 2025
 Quant Method : Z:\pestpcbsrv\HPCHEM1\ECD_L\methods\PL120925.M
 Quant Title : GC Extractables
 QLast Update : Tue Dec 09 14:16:16 2025
 Response via : Initial Calibration
 Integrator: ChemStation

Volume Inj. : 1 µl
 Signal #1 Phase : ZB-MR1 Signal #2 Phase: ZB-MR2
 Signal #1 Info : 30M x 0.32mm x0.5 Signal #2 Info : 30M x 0.32mm x0.25µm

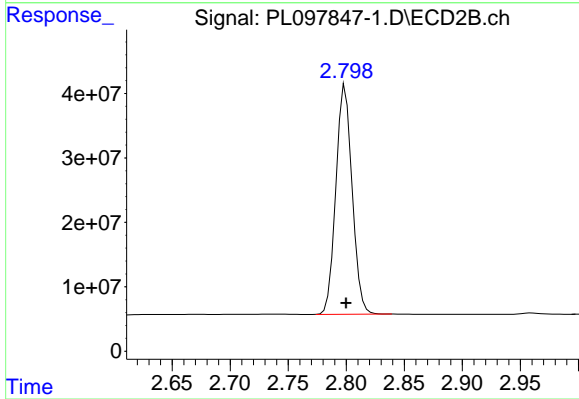




#1 Tetrachloro-m-xylene

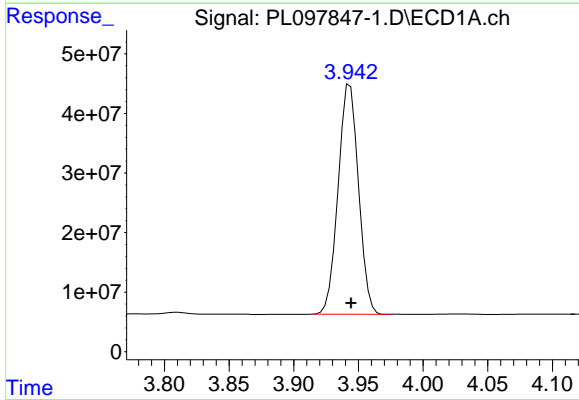
R.T.: 3.497 min
 Delta R.T.: 0.000 min
 Response: 245556315
 Conc: 48.65 ng/ml

Instrument :
 ECD_L
 ClientSampleId :



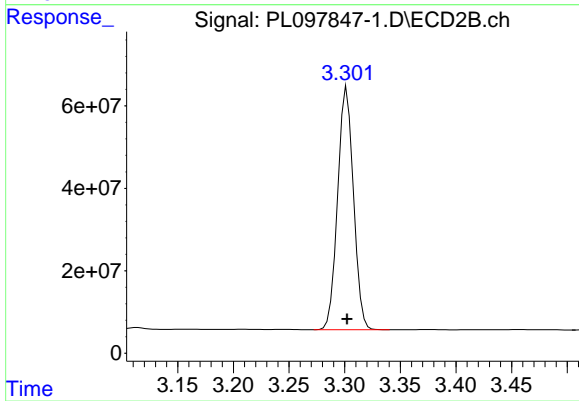
#1 Tetrachloro-m-xylene

R.T.: 2.799 min
 Delta R.T.: 0.000 min
 Response: 347593630
 Conc: 49.76 ng/ml



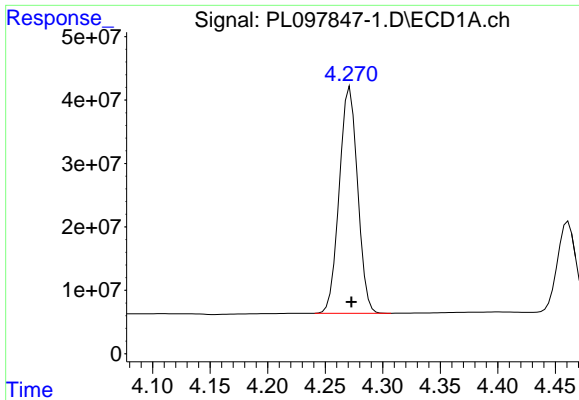
#2 alpha-BHC

R.T.: 3.944 min
 Delta R.T.: 0.000 min
 Response: 422667083
 Conc: 49.98 ng/ml



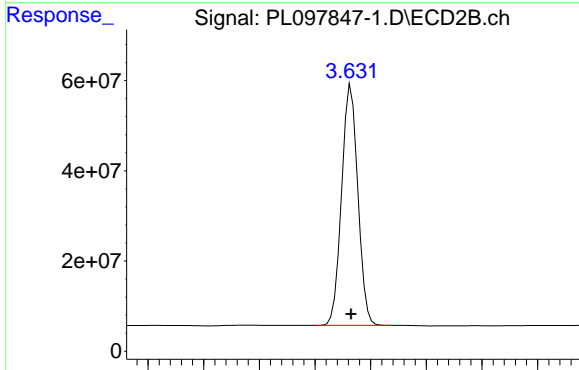
#2 alpha-BHC

R.T.: 3.302 min
 Delta R.T.: 0.000 min
 Response: 581999926
 Conc: 50.72 ng/ml

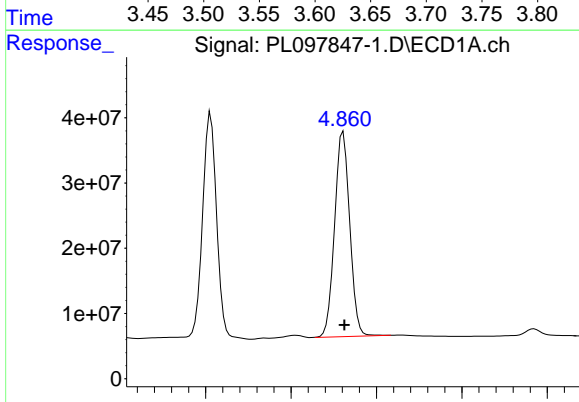


#3 gamma-BHC (Lindane)
 R.T.: 4.271 min
 Delta R.T.: -0.001 min
 Response: 396920709
 Conc: 49.51 ng/ml

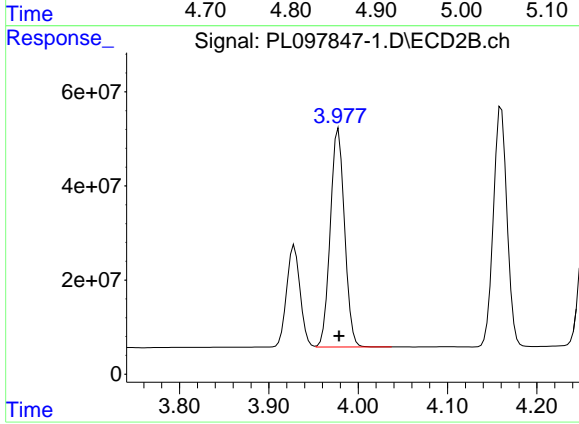
Instrument :
 ECD_L
 ClientSampleId :



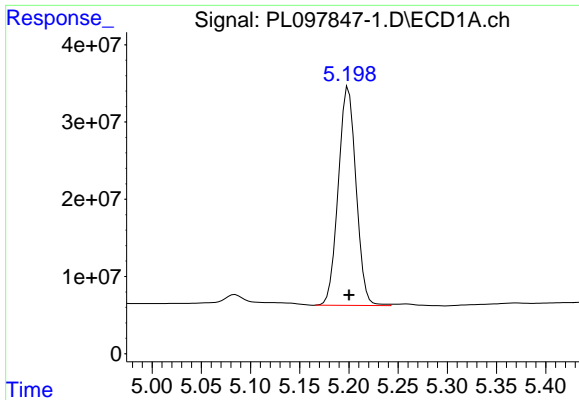
#3 gamma-BHC (Lindane)
 R.T.: 3.632 min
 Delta R.T.: 0.000 min
 Response: 541378030
 Conc: 50.33 ng/ml



#4 Heptachlor
 R.T.: 4.861 min
 Delta R.T.: -0.001 min
 Response: 387214892
 Conc: 48.63 ng/ml

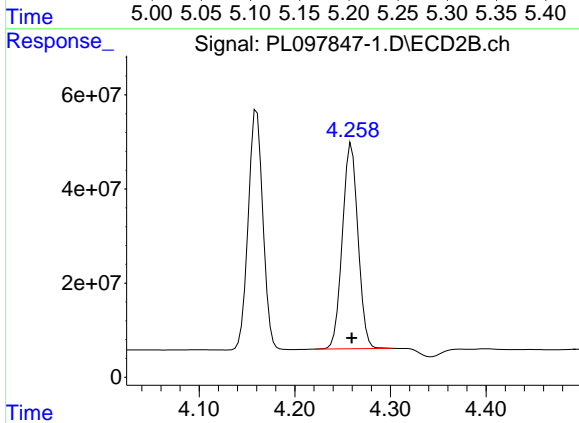


#4 Heptachlor
 R.T.: 3.978 min
 Delta R.T.: 0.000 min
 Response: 514396196
 Conc: 49.48 ng/ml

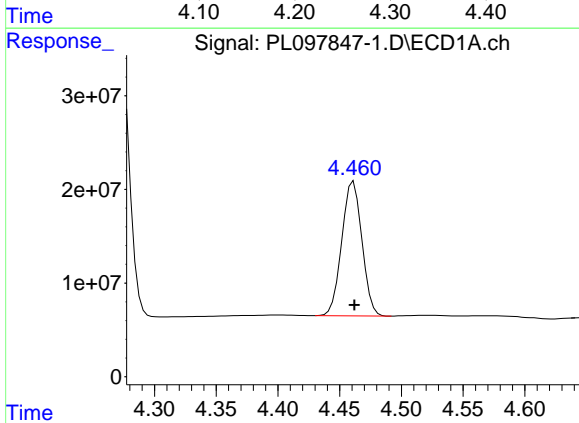


#5 Aldrin
 R.T.: 5.199 min
 Delta R.T.: 0.000 min
 Response: 355639543
 Conc: 49.09 ng/ml

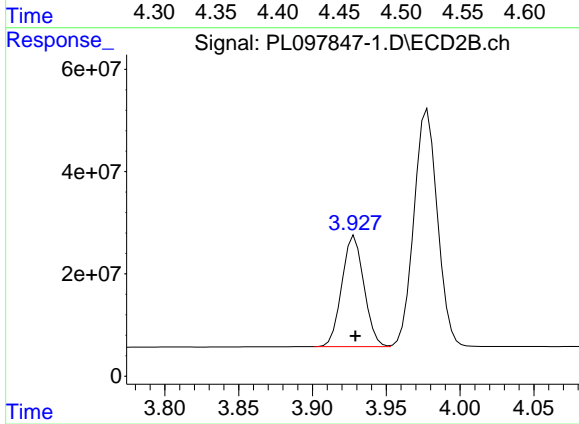
Instrument :
 ECD_L
 ClientSampleId :



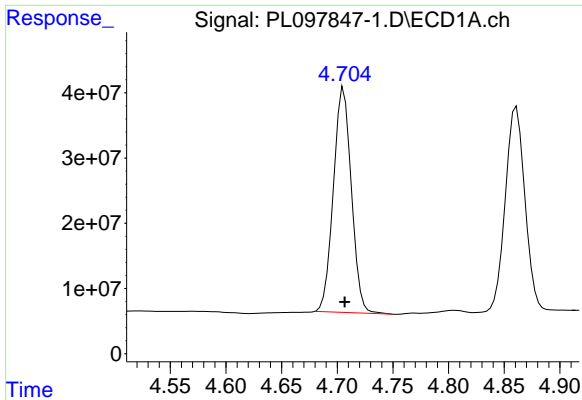
#5 Aldrin
 R.T.: 4.259 min
 Delta R.T.: 0.000 min
 Response: 497607414
 Conc: 50.32 ng/ml



#6 beta-BHC
 R.T.: 4.461 min
 Delta R.T.: 0.000 min
 Response: 163305364
 Conc: 48.78 ng/ml



#6 beta-BHC
 R.T.: 3.929 min
 Delta R.T.: 0.000 min
 Response: 225941416
 Conc: 48.73 ng/ml

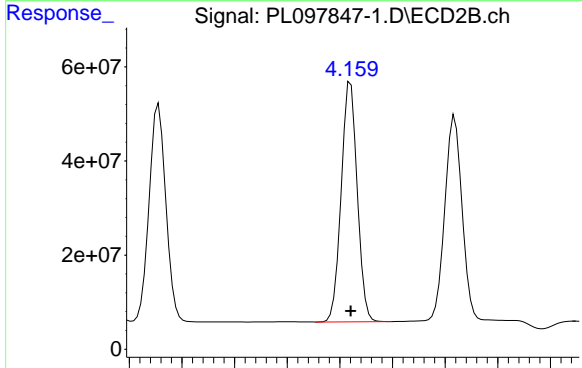


#7 delta-BHC

R.T.: 4.706 min
Delta R.T.: 0.000 min
Response: 387178614
Conc: 49.99 ng/ml

Instrument :
ECD_L
ClientSampleId :

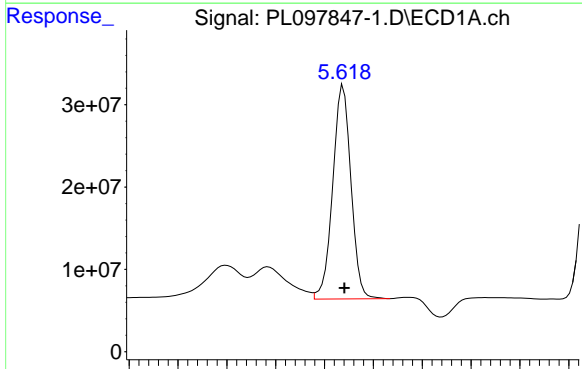
Time 4.55 4.60 4.65 4.70 4.75 4.80 4.85 4.90



#7 delta-BHC

R.T.: 4.160 min
Delta R.T.: 0.000 min
Response: 541902814
Conc: 50.71 ng/ml

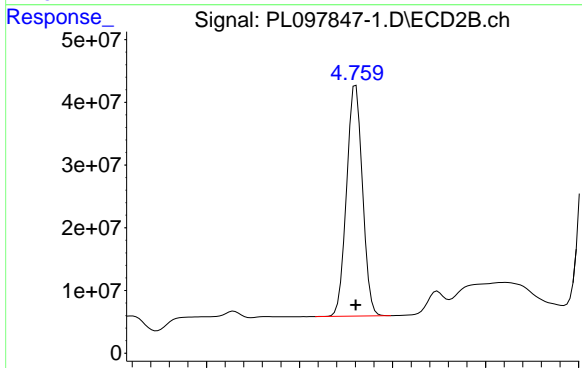
Time 3.95 4.00 4.05 4.10 4.15 4.20 4.25 4.30 4.35



#8 Heptachlor epoxide

R.T.: 5.619 min
Delta R.T.: -0.001 min
Response: 337667661
Conc: 50.75 ng/ml

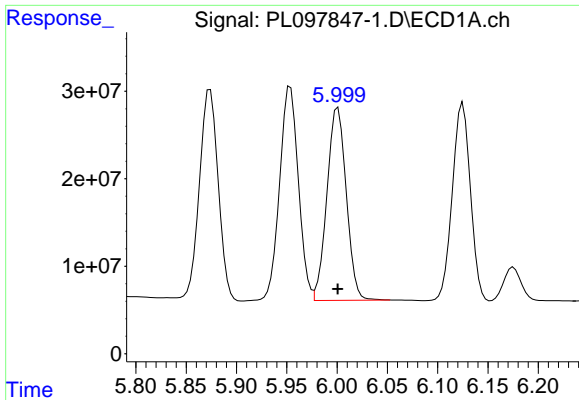
Time 5.40 5.45 5.50 5.55 5.60 5.65 5.70 5.75 5.80



#8 Heptachlor epoxide

R.T.: 4.760 min
Delta R.T.: 0.000 min
Response: 437140651
Conc: 48.55 ng/ml

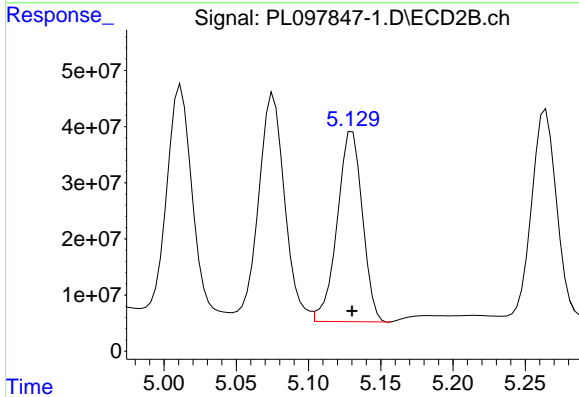
Time 4.60 4.70 4.80 4.90



#9 Endosulfan I

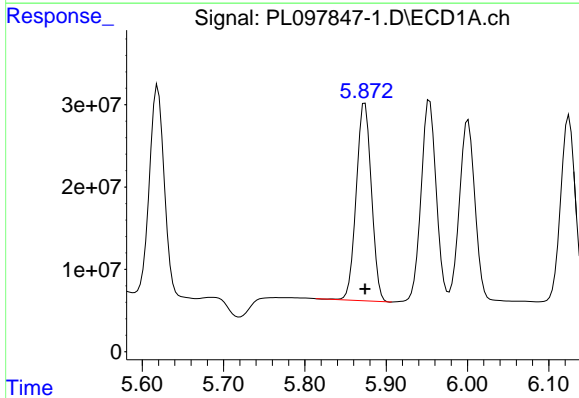
R.T.: 6.001 min
 Delta R.T.: 0.000 min
 Response: 293865813
 Conc: 49.91 ng/ml

Instrument :
 ECD_L
 ClientSampleId :



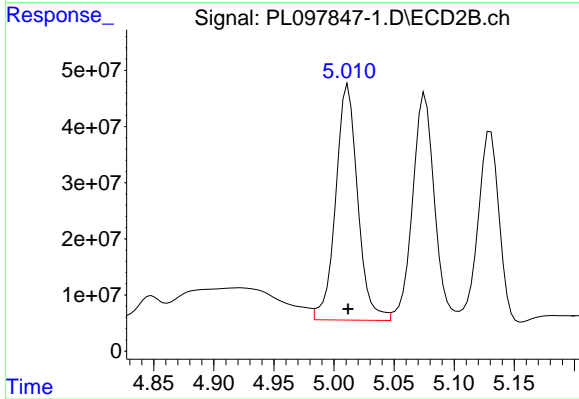
#9 Endosulfan I

R.T.: 5.130 min
 Delta R.T.: 0.000 min
 Response: 411020353
 Conc: 40.34 ng/ml



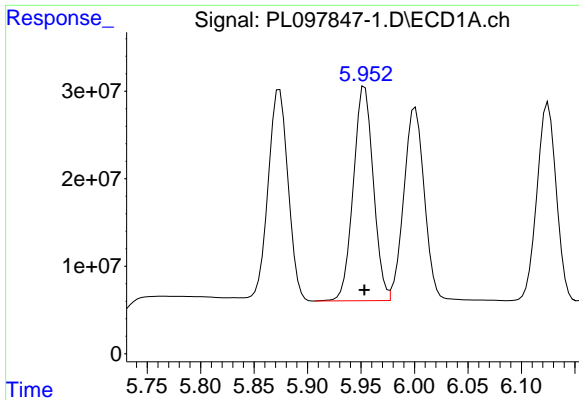
#10 gamma-Chlordane

R.T.: 5.874 min
 Delta R.T.: 0.000 min
 Response: 311026759
 Conc: 47.91 ng/ml



#10 gamma-Chlordane

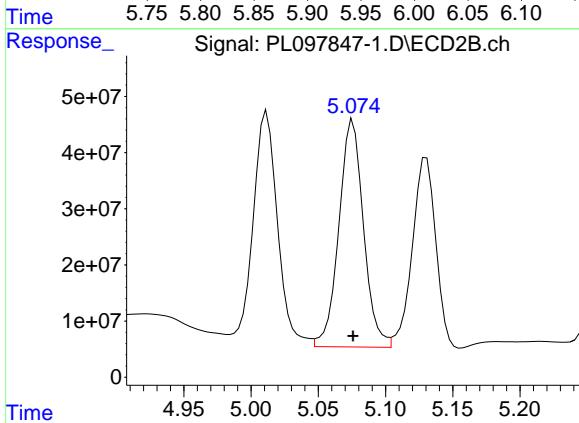
R.T.: 5.012 min
 Delta R.T.: 0.000 min
 Response: 536309521
 Conc: 52.66 ng/ml



#11 alpha-Chlordane

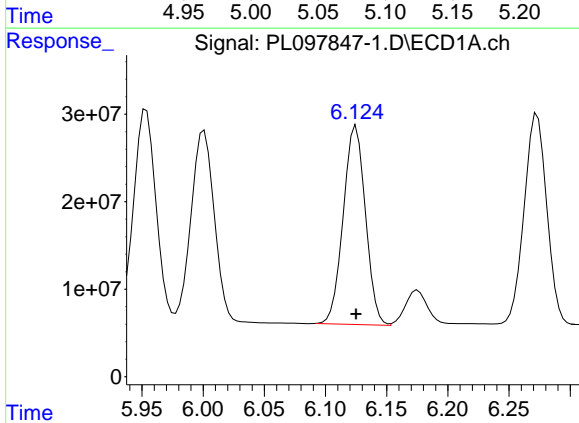
R.T.: 5.954 min
 Delta R.T.: 0.000 min
 Response: 318572186
 Conc: 49.06 ng/ml

Instrument :
 ECD_L
 ClientSampleId :



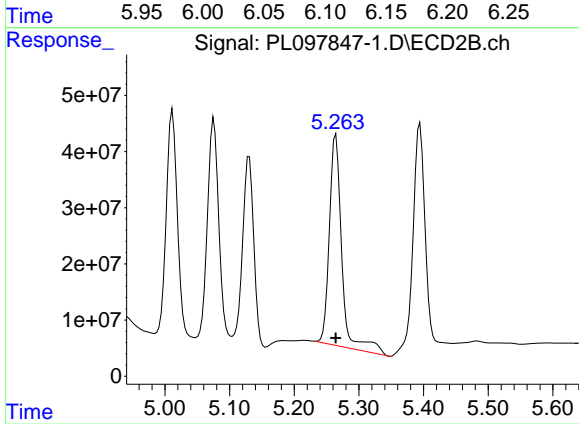
#11 alpha-Chlordane

R.T.: 5.076 min
 Delta R.T.: 0.000 min
 Response: 514858806
 Conc: 50.21 ng/ml



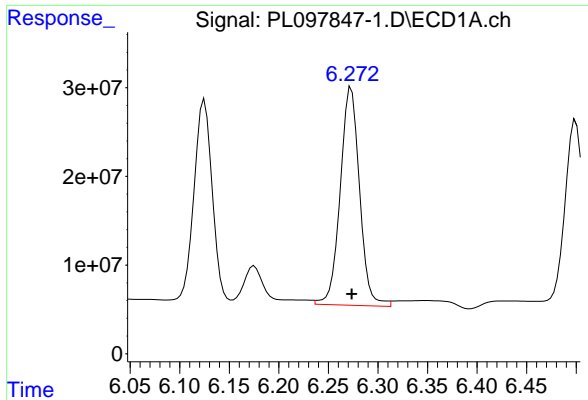
#12 4,4'-DDE

R.T.: 6.125 min
 Delta R.T.: 0.000 min
 Response: 286996767
 Conc: 48.86 ng/ml



#12 4,4'-DDE

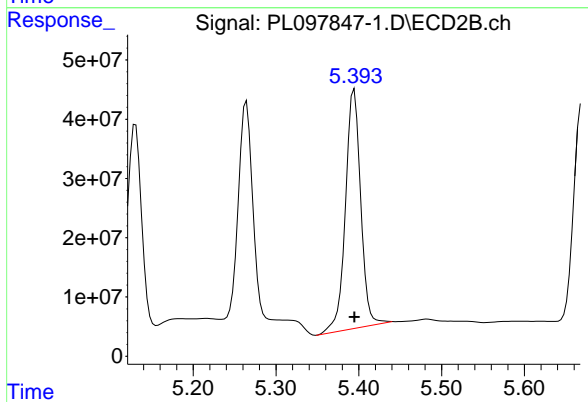
R.T.: 5.264 min
 Delta R.T.: 0.000 min
 Response: 503711819
 Conc: 57.17 ng/ml



#13 Dieldrin

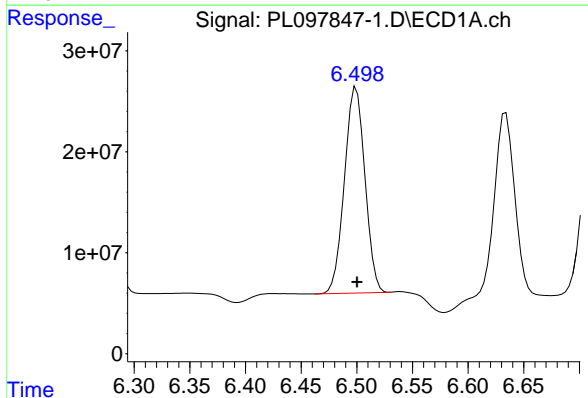
R.T.: 6.273 min
 Delta R.T.: 0.000 min
 Response: 334088238
 Conc: 54.44 ng/ml

Instrument :
 ECD_L
 ClientSampleId :



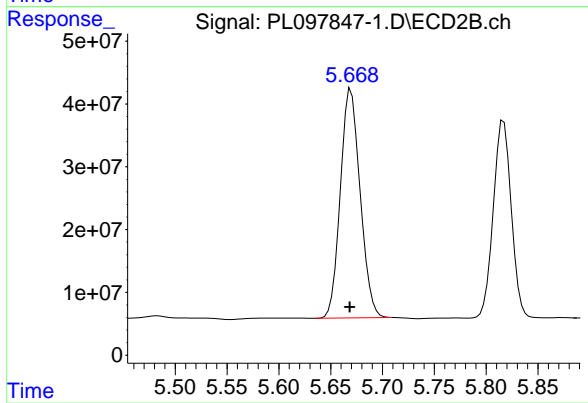
#13 Dieldrin

R.T.: 5.394 min
 Delta R.T.: 0.000 min
 Response: 515913600
 Conc: 55.06 ng/ml



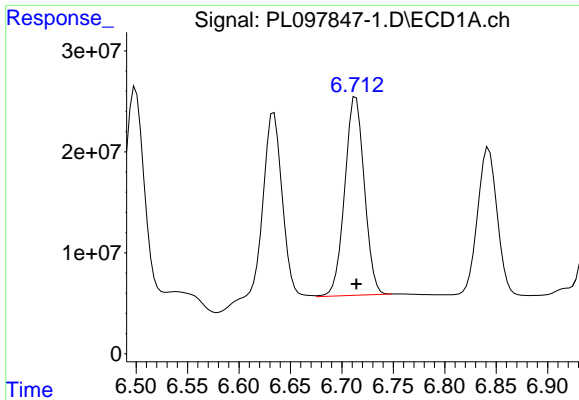
#14 Endrin

R.T.: 6.499 min
 Delta R.T.: 0.000 min
 Response: 261375619
 Conc: 50.46 ng/ml



#14 Endrin

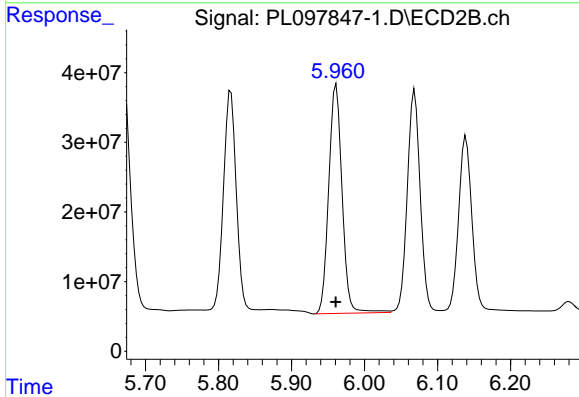
R.T.: 5.670 min
 Delta R.T.: 0.001 min
 Response: 483981821
 Conc: 57.91 ng/ml



#15 Endosulfan II

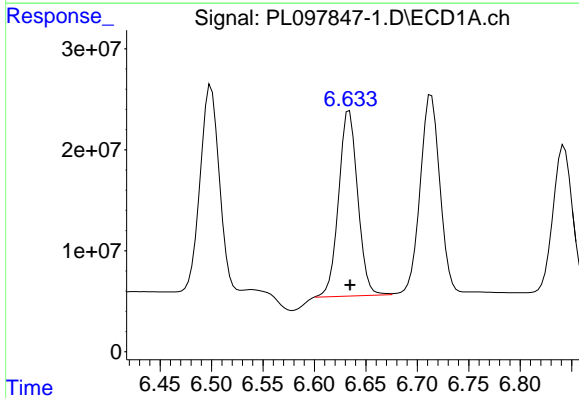
R.T.: 6.714 min
 Delta R.T.: 0.000 min
 Response: 260223421
 Conc: 50.92 ng/ml

Instrument :
 ECD_L
 ClientSampleId :



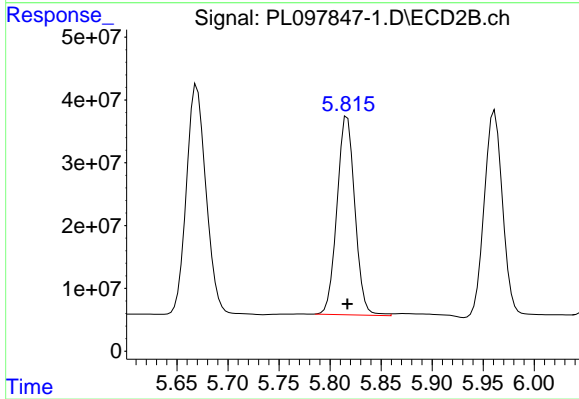
#15 Endosulfan II

R.T.: 5.961 min
 Delta R.T.: 0.000 min
 Response: 417939144
 Conc: 50.49 ng/ml



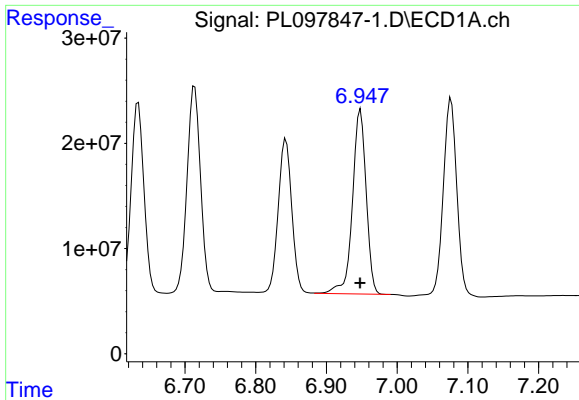
#16 4,4'-DDD

R.T.: 6.634 min
 Delta R.T.: 0.000 min
 Response: 236715335
 Conc: 51.10 ng/ml



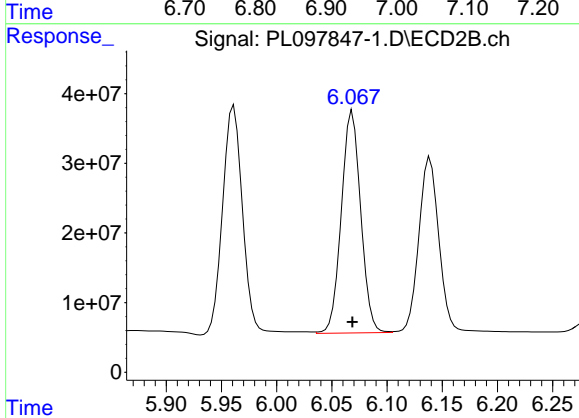
#16 4,4'-DDD

R.T.: 5.817 min
 Delta R.T.: 0.000 min
 Response: 386018122
 Conc: 51.46 ng/ml

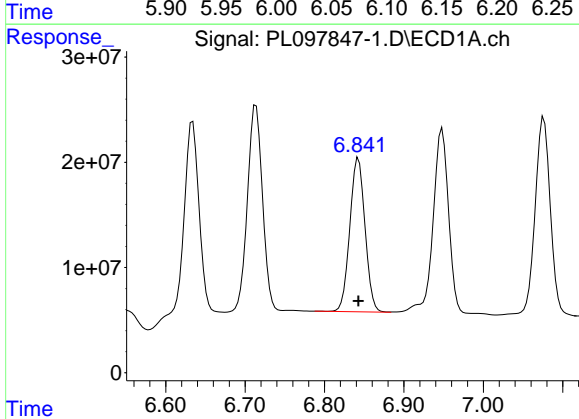


#17 4,4'-DDT
 R.T.: 6.948 min
 Delta R.T.: 0.000 min
 Response: 236166592
 Conc: 49.30 ng/ml

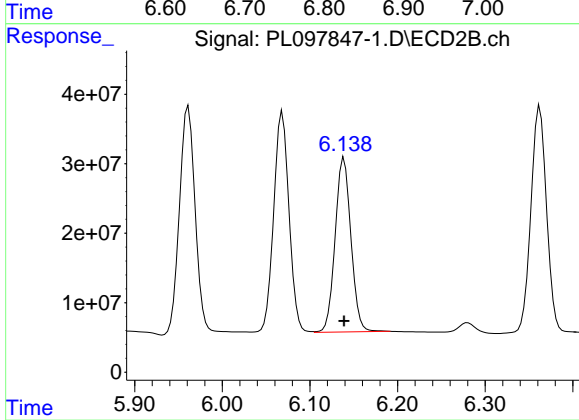
Instrument :
 ECD_L
 ClientSampleId :



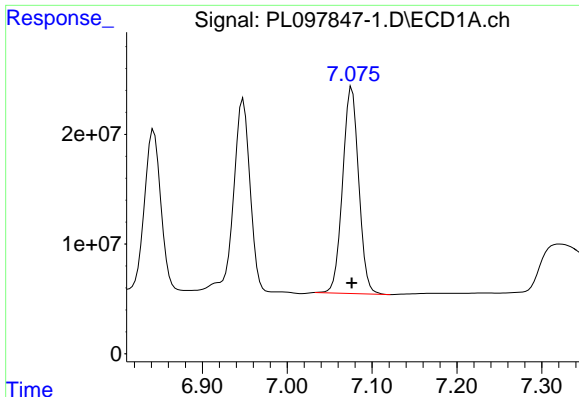
#17 4,4'-DDT
 R.T.: 6.069 min
 Delta R.T.: 0.000 min
 Response: 389839762
 Conc: 50.82 ng/ml



#18 Endrin aldehyde
 R.T.: 6.843 min
 Delta R.T.: 0.000 min
 Response: 194391383
 Conc: 49.33 ng/ml



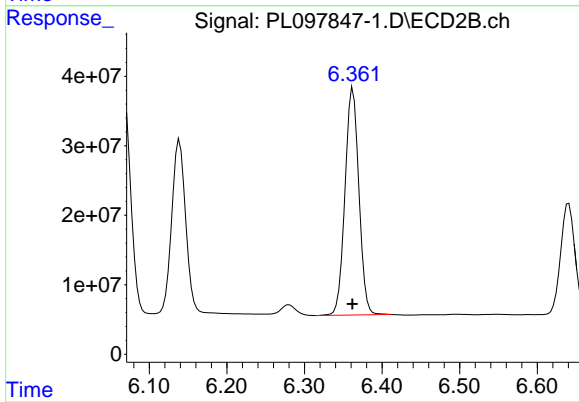
#18 Endrin aldehyde
 R.T.: 6.139 min
 Delta R.T.: 0.000 min
 Response: 314669046
 Conc: 49.28 ng/ml



#19 Endosulfan Sulfate

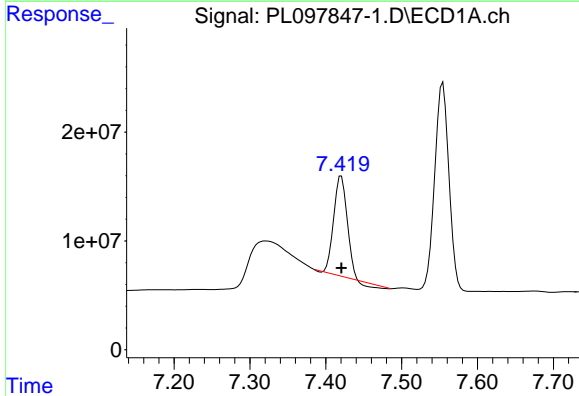
R.T.: 7.076 min
 Delta R.T.: 0.000 min
 Response: 247892843
 Conc: 50.00 ng/ml

Instrument :
 ECD_L
 ClientSampleId :



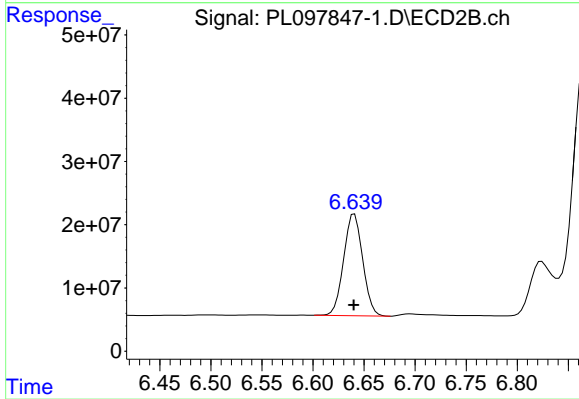
#19 Endosulfan Sulfate

R.T.: 6.362 min
 Delta R.T.: 0.000 min
 Response: 407017560
 Conc: 50.00 ng/ml



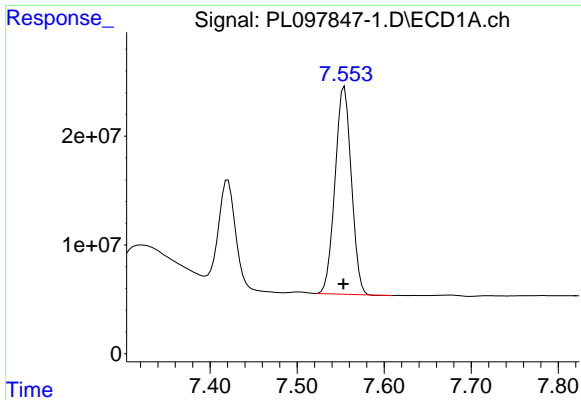
#20 Methoxychlor

R.T.: 7.420 min
 Delta R.T.: 0.000 min
 Response: 109563595
 Conc: 43.53 ng/ml



#20 Methoxychlor

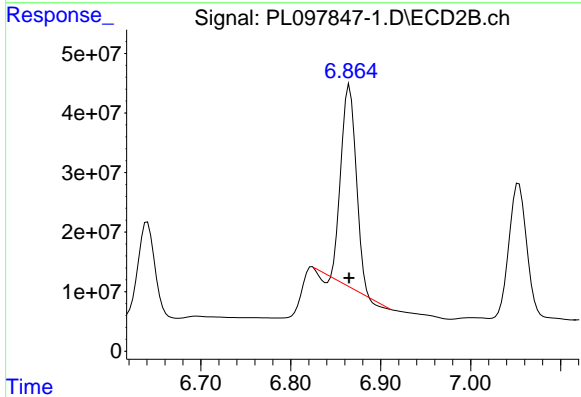
R.T.: 6.641 min
 Delta R.T.: 0.000 min
 Response: 208590216
 Conc: 49.91 ng/ml



#21 Endrin ketone

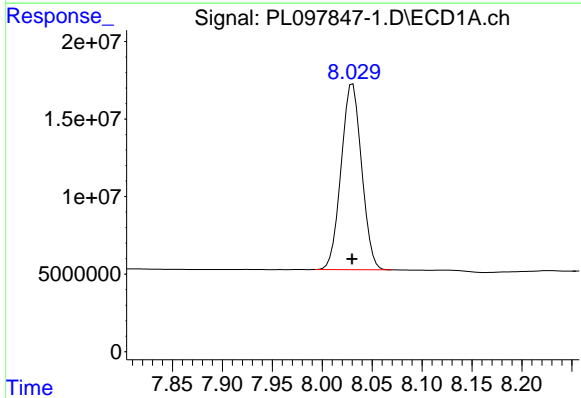
R.T.: 7.554 min
 Delta R.T.: 0.001 min
 Response: 248837050
 Conc: 47.88 ng/ml

Instrument :
 ECD_L
 ClientSampleId :



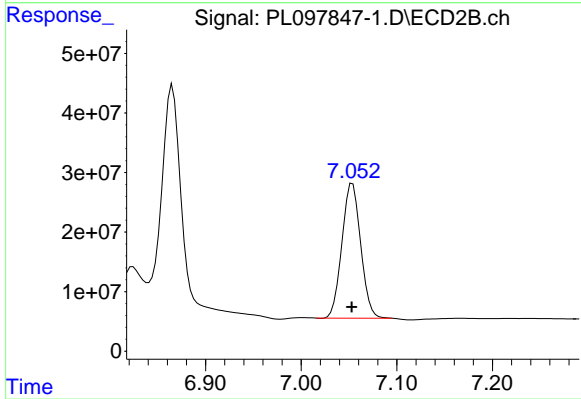
#21 Endrin ketone

R.T.: 6.865 min
 Delta R.T.: 0.000 min
 Response: 377585574
 Conc: 42.33 ng/ml



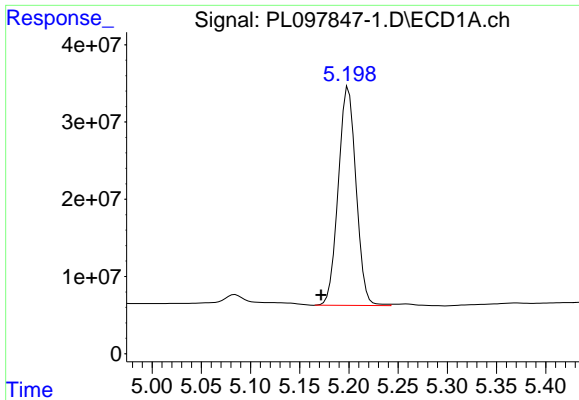
#22 Mirex

R.T.: 8.031 min
 Delta R.T.: 0.000 min
 Response: 171225283
 Conc: 49.65 ng/ml



#22 Mirex

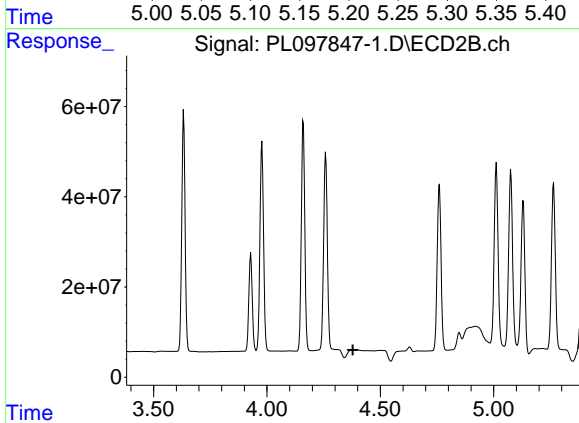
R.T.: 7.054 min
 Delta R.T.: 0.000 min
 Response: 308988554
 Conc: 47.87 ng/ml



#24 Chlordane-2

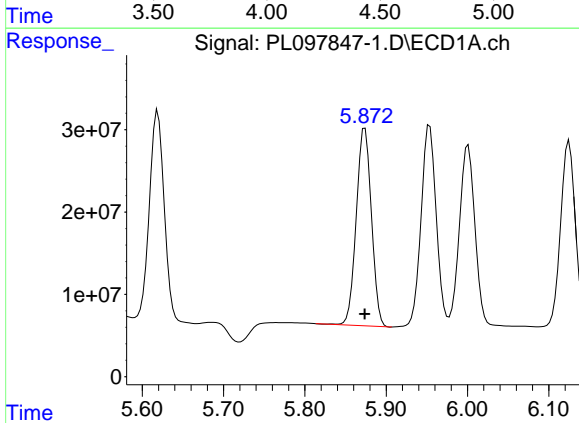
R.T.: 5.199 min
 Delta R.T.: 0.028 min
 Response: 355639543
 Conc: 1472.07 ng/m

Instrument :
 ECD_L
 ClientSampleId :



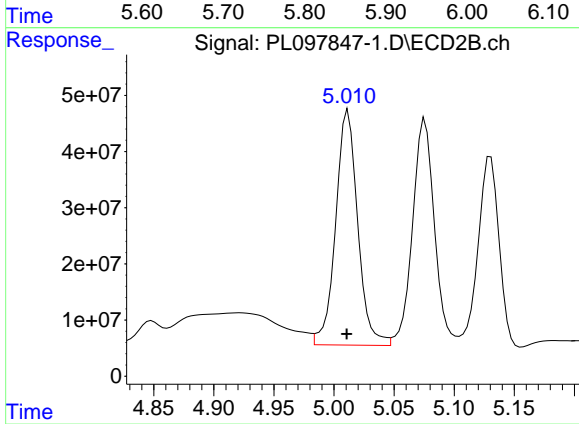
#24 Chlordane-2

R.T.: 4.374 min
 Delta R.T.: -0.005 min
 Response: -1826647
 Conc: N.D.



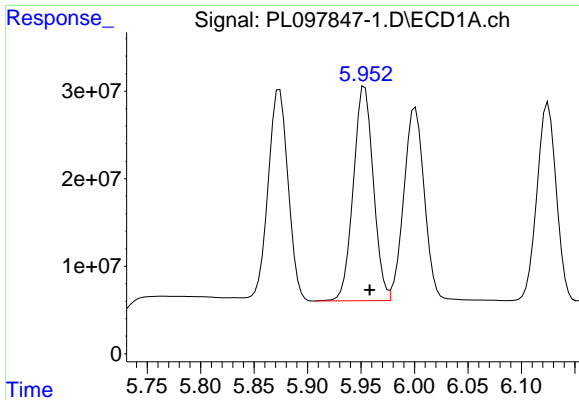
#25 Chlordane-3

R.T.: 5.874 min
 Delta R.T.: 0.000 min
 Response: 311026759
 Conc: 352.50 ng/ml



#25 Chlordane-3

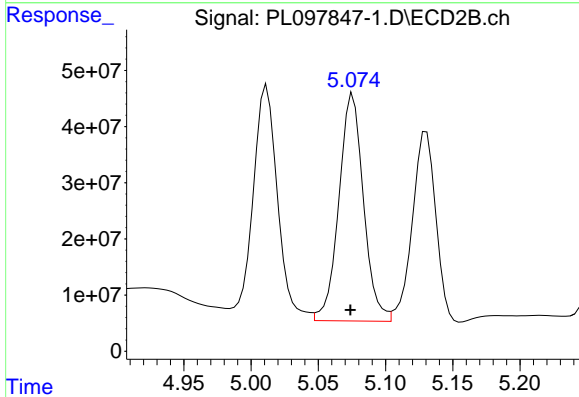
R.T.: 5.012 min
 Delta R.T.: 0.001 min
 Response: 536309521
 Conc: 614.23 ng/ml



#26 Chlordane-4

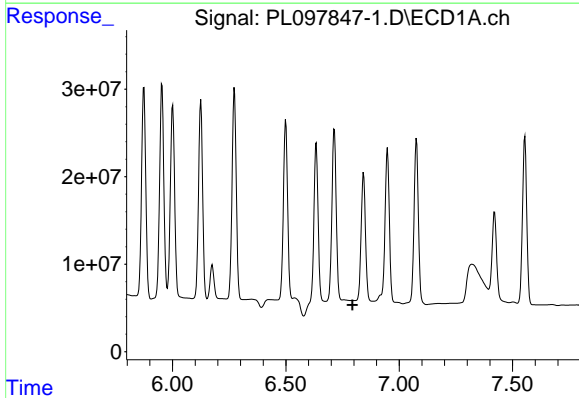
R.T.: 5.954 min
 Delta R.T.: -0.005 min
 Response: 318572186
 Conc: 300.85 ng/ml

Instrument :
 ECD_L
 ClientSampleId :



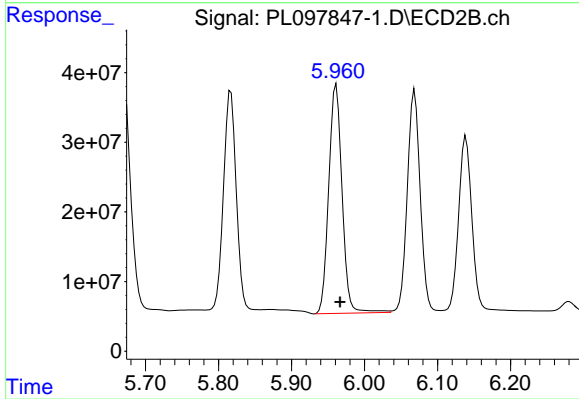
#26 Chlordane-4

R.T.: 5.076 min
 Delta R.T.: 0.002 min
 Response: 514858806
 Conc: 637.76 ng/ml



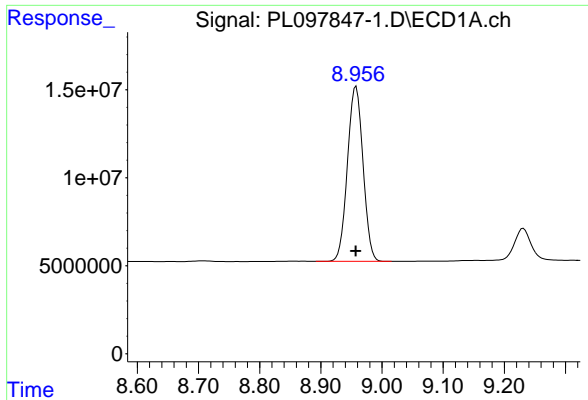
#27 Chlordane-5

R.T.: 0.000 min
 Exp R.T. : 6.794 min
 Response: 0
 Conc: N.D.



#27 Chlordane-5

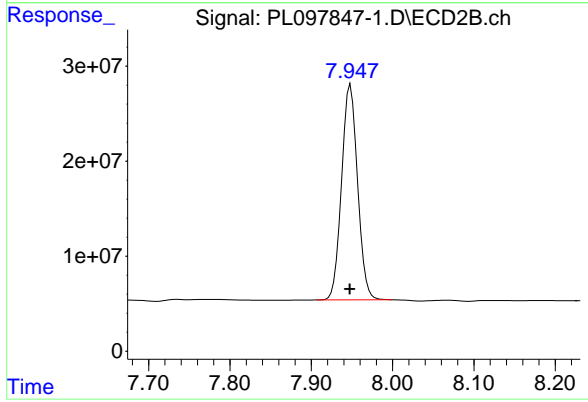
R.T.: 5.961 min
 Delta R.T.: -0.005 min
 Response: 417939144
 Conc: 1270.45 ng/ml



#28 Decachlorobiphenyl

R.T.: 8.958 min
Delta R.T.: 0.000 min
Response: 176001824
Conc: 46.32 ng/ml

Instrument :
ECD_L
ClientSampleId :



#28 Decachlorobiphenyl

R.T.: 7.948 min
Delta R.T.: 0.000 min
Response: 308730836
Conc: 46.95 ng/ml