

Data Path : Z:\pestpcbsrv\HPCHEM1\ECD_L\Data\PL121218\
 Data File : PL043023.D
 Signal(s) : Signal #1: ECD1A.ch Signal #2: ECD2B.ch
 Acq On : 12 Dec 2018 16:15
 Operator : AJ\SJ
 Sample : PB115576BS
 Misc :
 ALS Vial : 29 Sample Multiplier: 1

Instrument :
 ECD_L
 ClientSampleId :
 PB115576BS

Integration File signal 1: autoint1.e
 Integration File signal 2: autoint2.e
 Quant Time: Dec 13 02:47:09 2018
 Quant Method : Z:\pestpcbsrv\HPCHEM1\ECD_L\methods\PL120618.M
 Quant Title : GC Extractables
 QLast Update : Fri Dec 07 00:20:08 2018
 Response via : Initial Calibration
 Integrator: ChemStation

Volume Inj. : 2 µl
 Signal #1 Phase : ZB-MR1 Signal #2 Phase: ZB-MR2
 Signal #1 Info : 30M x 0.32mm x0.5 Signal #2 Info : 30M x 0.32mm x0.25µm

	Compound	RT#1	RT#2	Resp#1	Resp#2	ng/ml	ng/ml

System Monitoring Compounds							
1)	SA Tetrachlo...	3.464	4.099	108.6E6	59586605	17.706	20.104
28)	SA Decachlor...	8.201	9.227	118.0E6	49092843	18.065	18.820
Target Compounds							
2)	A alpha-BHC	3.904	4.494	467.7E6	229.6E6	49.476	50.753
3)	MA gamma-BHC...	4.187	4.783	431.0E6	213.6E6	49.921	50.928
4)	MA Heptachlor	4.482	5.298	450.9E6	213.4E6	50.823	52.101
5)	MB Aldrin	4.728	5.606	432.0E6	213.0E6	50.958	52.176
6)	B beta-BHC	4.441	4.952	179.1E6	88488930	48.554	52.270
7)	B delta-BHC	4.642	5.173	359.2E6	191.3E6	44.349	44.521
8)	B Heptachlo...	5.171	5.995	399.8E6	195.3E6	50.430	51.494
9)	A Endosulfan I	5.508	6.355	366.6E6	177.6E6	50.037	52.310
10)	B gamma-Chl...	5.397	6.230	402.4E6	193.2E6	49.918	52.594
11)	B alpha-Chl...	5.454	6.303	391.4E6	186.4E6	49.298	51.829
12)	B 4,4'-DDE	5.620	6.458	357.2E6	189.6E6	51.591	52.319
13)	MA Dieldrin	5.751	6.613	394.9E6	190.3E6	50.798	52.496
14)	MA Endrin	6.007	6.833	316.6E6	142.0E6	43.964	45.469
15)	B Endosulfa...	6.282	7.041	336.0E6	160.1E6	50.514	52.881
16)	A 4,4'-DDD	6.136	6.950	305.9E6	157.0E6	53.945	53.547
17)	MA 4,4'-DDT	6.374	7.250	273.9E6	136.6E6	46.050	46.517
18)	B Endrin al...	6.450	7.165	282.5E6	134.9E6	51.259	53.766
19)	B Endosulfa...	6.662	7.389	324.2E6	150.8E6	48.391	50.162
20)	A Methoxychlor	6.919	7.706	150.8E6	70207389	44.944	46.547
21)	B Endrin ke...	7.151	7.863	385.7E6	164.8E6	53.338	53.916
23)	Chlordane-1	4.361	5.173	741628	191.3E6	2.760	1353.777 #
24)	Chlordane-2	0.000	5.606	0	213.0E6	N.D.	1484.783 #
25)	Chlordane-3	5.397	6.230	402.4E6	193.2E6	484.247	393.442
26)	Chlordane-4	5.454	6.303	391.4E6	186.4E6	517.633	326.589 #
27)	Chlordane-5	6.282	7.165	336.0E6	134.9E6	1400.958	1150.307

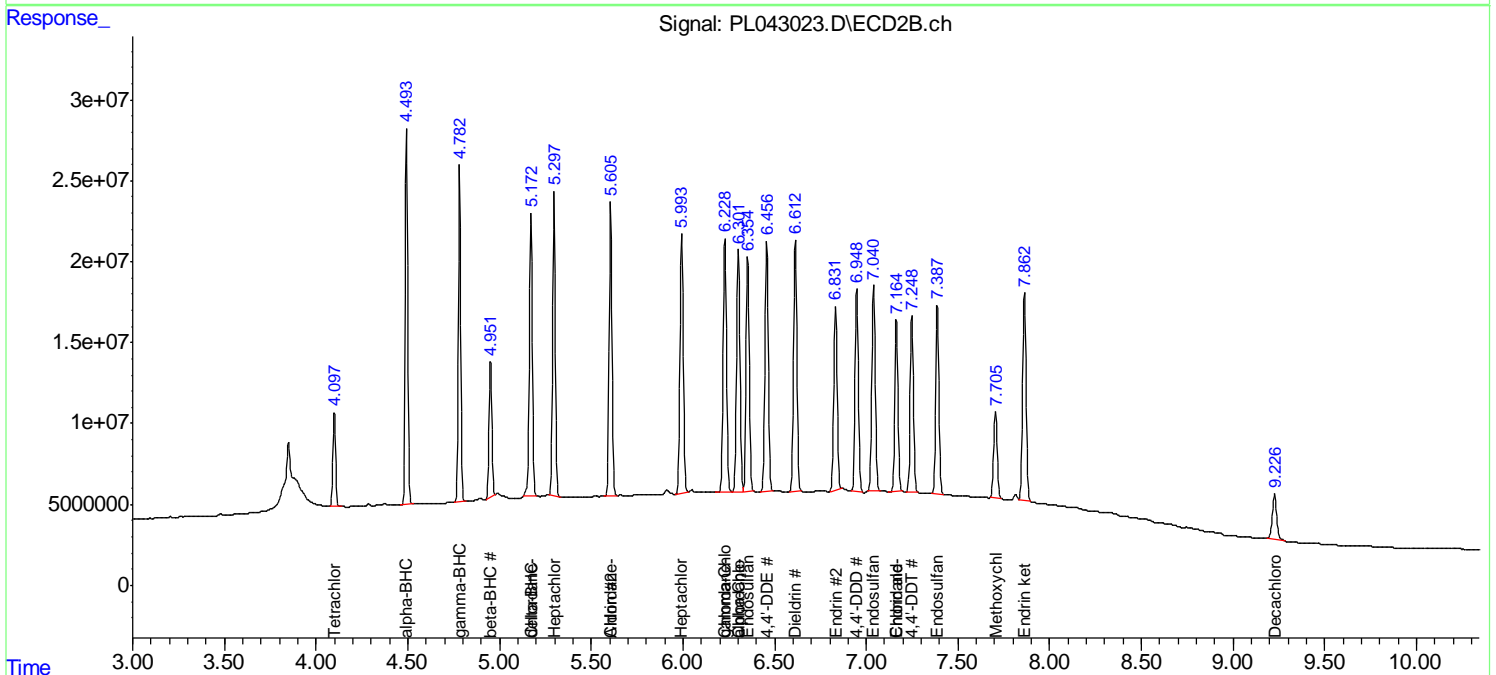
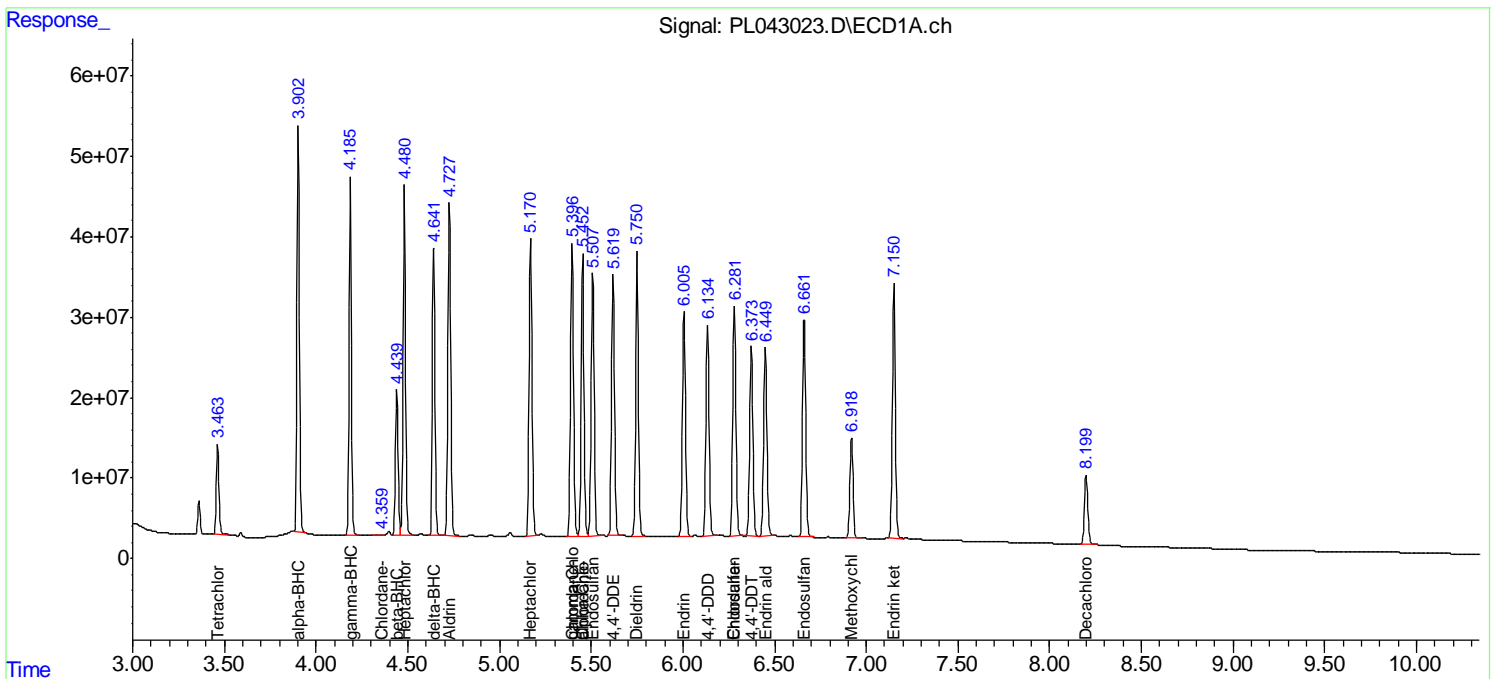
(f)=RT Delta > 1/2 Window (#)=Amounts differ by > 25% (m)=manual int.

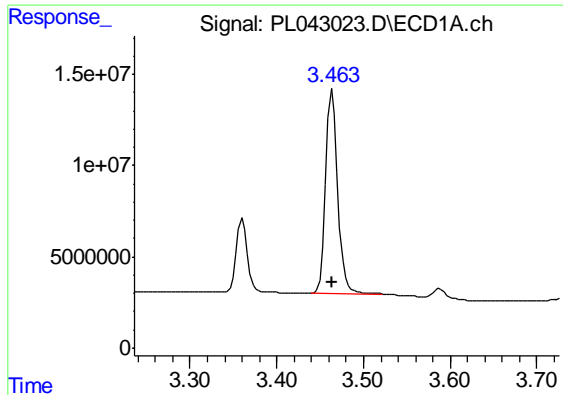
Data Path : Z:\pestpcbsrv\HPCHEM1\ECD_L\Data\PL121218\
 Data File : PL043023.D
 Signal(s) : Signal #1: ECD1A.ch Signal #2: ECD2B.ch
 Acq On : 12 Dec 2018 16:15
 Operator : AJ\SJ
 Sample : PB115576BS
 Misc :
 ALS Vial : 29 Sample Multiplier: 1

Instrument :
 ECD_L
 ClientSampled :
 PB115576BS

Integration File signal 1: autoint1.e
 Integration File signal 2: autoint2.e
 Quant Time: Dec 13 02:47:09 2018
 Quant Method : Z:\pestpcbsrv\HPCHEM1\ECD_L\methods\PL120618.M
 Quant Title : GC Extractables
 QLast Update : Fri Dec 07 00:20:08 2018
 Response via : Initial Calibration
 Integrator: ChemStation

Volume Inj. : 2 µl
 Signal #1 Phase : ZB-MR1 Signal #2 Phase: ZB-MR2
 Signal #1 Info : 30M x 0.32mm x0.5 Signal #2 Info : 30M x 0.32mm x0.25µm

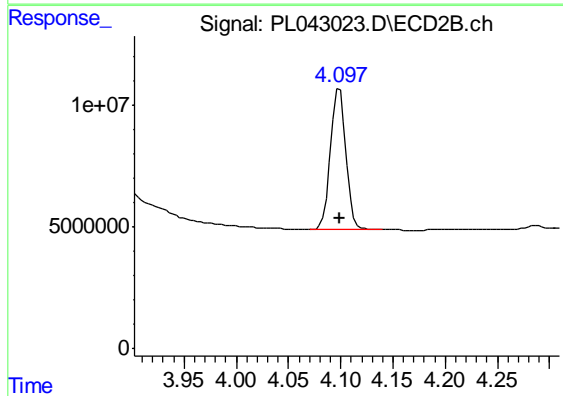




#1 Tetrachloro-m-xylene

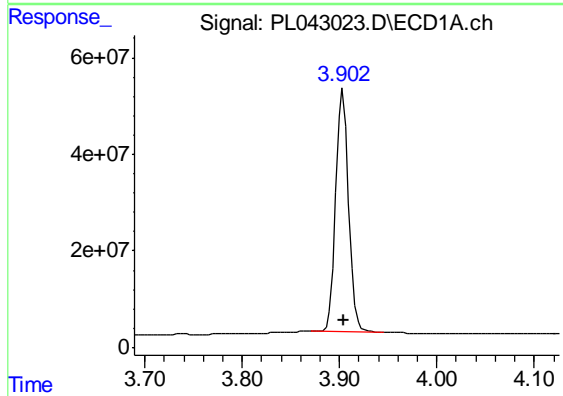
R.T.: 3.464 min
 Delta R.T.: 0.000 min
 Response: 108590440
 Conc: 17.71 ng/ml

Instrument :
 ECD_L
 ClientSampleId :
 PB115576BS



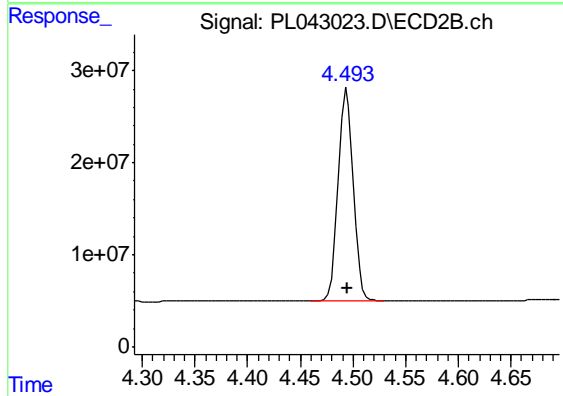
#1 Tetrachloro-m-xylene

R.T.: 4.099 min
 Delta R.T.: 0.000 min
 Response: 59586605
 Conc: 20.10 ng/ml



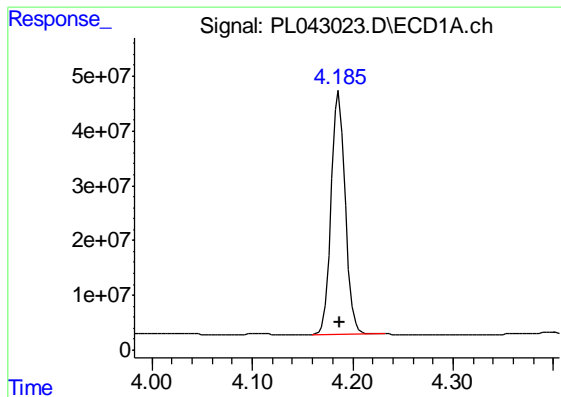
#2 alpha-BHC

R.T.: 3.904 min
 Delta R.T.: 0.000 min
 Response: 467711007
 Conc: 49.48 ng/ml



#2 alpha-BHC

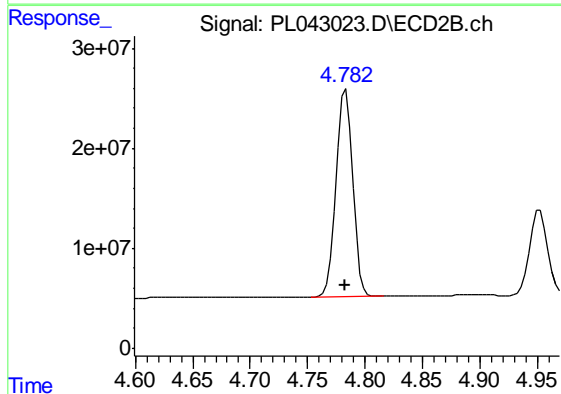
R.T.: 4.494 min
 Delta R.T.: 0.000 min
 Response: 229580491
 Conc: 50.75 ng/ml



#3 gamma-BHC (Lindane)

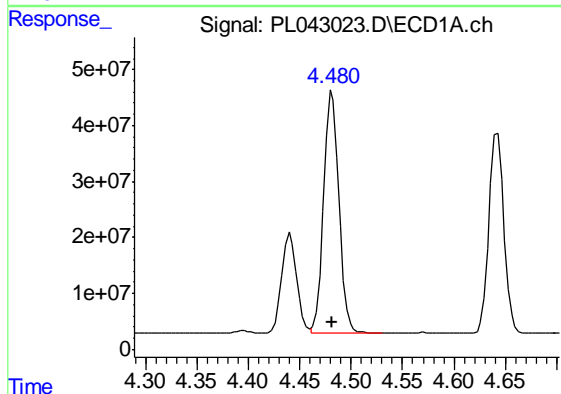
R.T.: 4.187 min
 Delta R.T.: 0.000 min
 Response: 431042537
 Conc: 49.92 ng/ml

Instrument :
 ECD_L
 ClientSampleId :
 PB115576BS



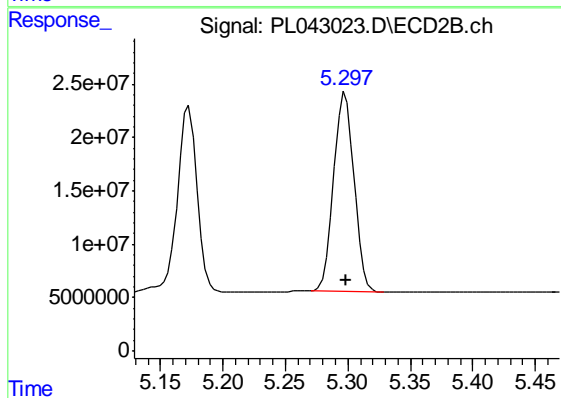
#3 gamma-BHC (Lindane)

R.T.: 4.783 min
 Delta R.T.: 0.000 min
 Response: 213600018
 Conc: 50.93 ng/ml



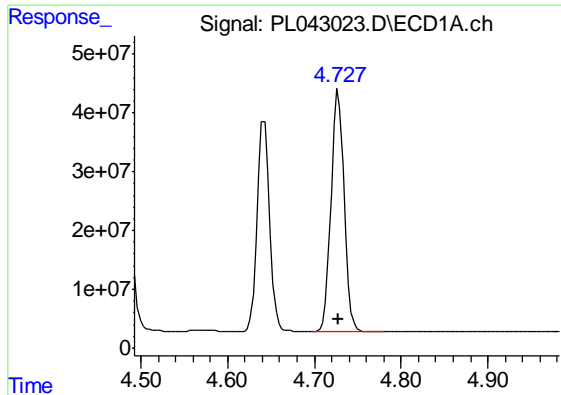
#4 Heptachlor

R.T.: 4.482 min
 Delta R.T.: 0.000 min
 Response: 450936565
 Conc: 50.82 ng/ml



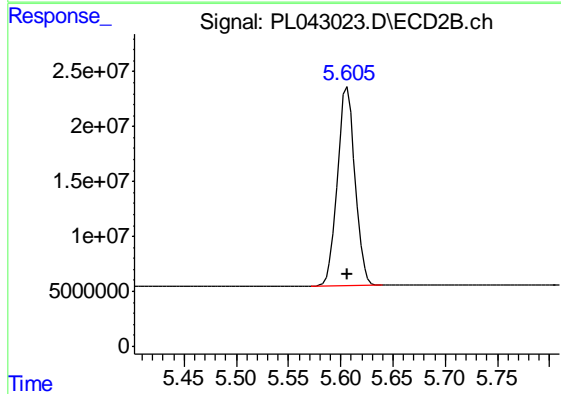
#4 Heptachlor

R.T.: 5.298 min
 Delta R.T.: 0.000 min
 Response: 213425856
 Conc: 52.10 ng/ml

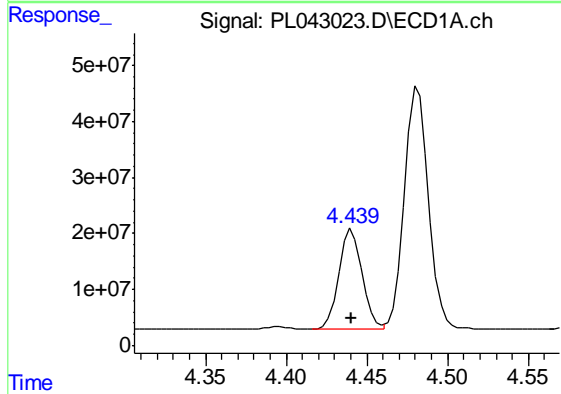


#5 Aldrin
 R.T.: 4.728 min
 Delta R.T.: 0.000 min
 Response: 432048871
 Conc: 50.96 ng/ml

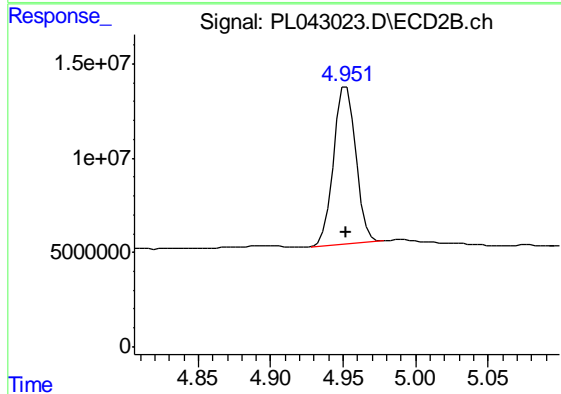
Instrument :
 ECD_L
 ClientSampleId :
 PB115576BS



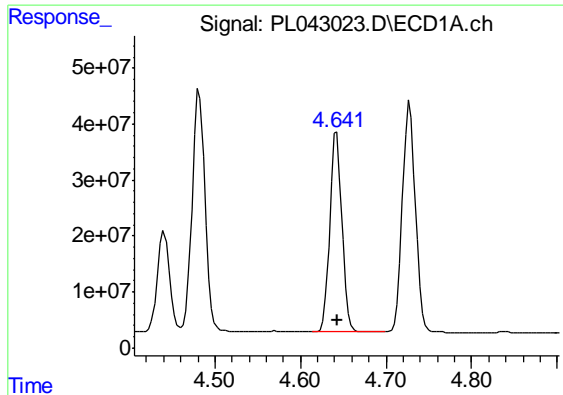
#5 Aldrin
 R.T.: 5.606 min
 Delta R.T.: 0.000 min
 Response: 212980066
 Conc: 52.18 ng/ml



#6 beta-BHC
 R.T.: 4.441 min
 Delta R.T.: 0.000 min
 Response: 179090573
 Conc: 48.55 ng/ml



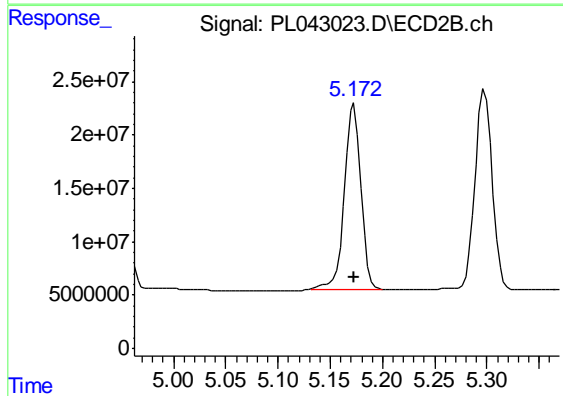
#6 beta-BHC
 R.T.: 4.952 min
 Delta R.T.: 0.000 min
 Response: 88488930
 Conc: 52.27 ng/ml



#7 delta-BHC

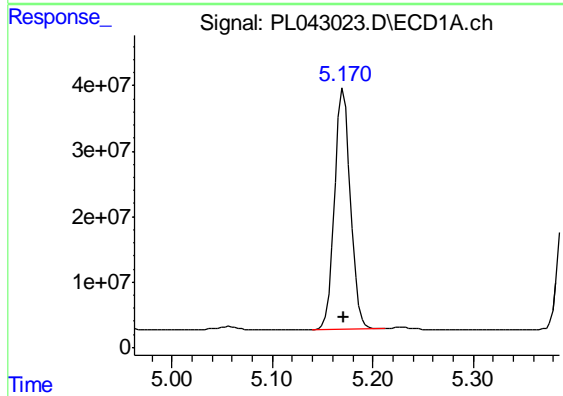
R.T.: 4.642 min
 Delta R.T.: 0.000 min
 Response: 359151741
 Conc: 44.35 ng/ml

Instrument :
 ECD_L
 ClientSampleId :
 PB115576BS



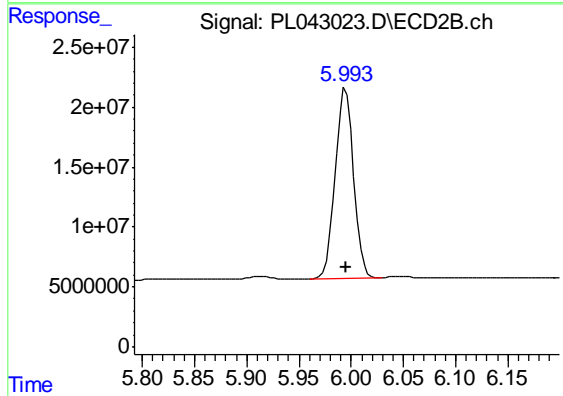
#7 delta-BHC

R.T.: 5.173 min
 Delta R.T.: 0.000 min
 Response: 191333401
 Conc: 44.52 ng/ml



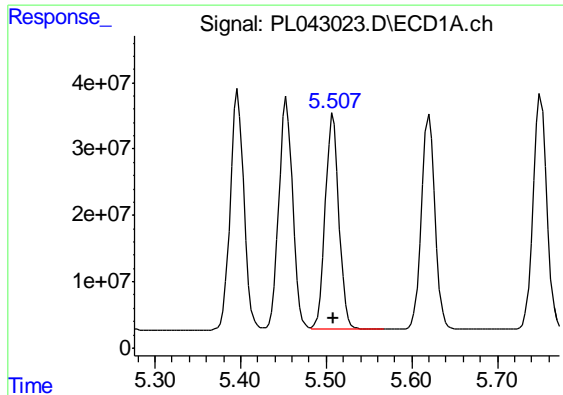
#8 Heptachlor epoxide

R.T.: 5.171 min
 Delta R.T.: 0.000 min
 Response: 399754524
 Conc: 50.43 ng/ml



#8 Heptachlor epoxide

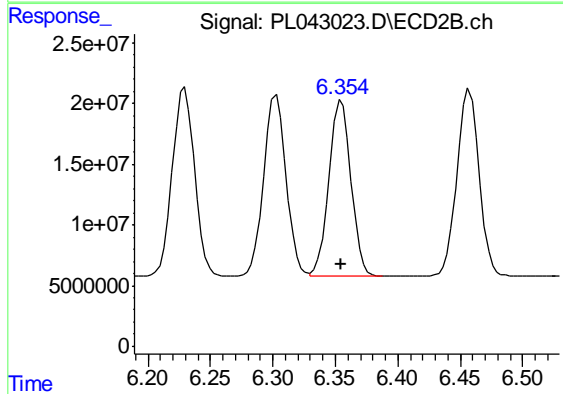
R.T.: 5.995 min
 Delta R.T.: 0.000 min
 Response: 195264358
 Conc: 51.49 ng/ml



#9 Endosulfan I

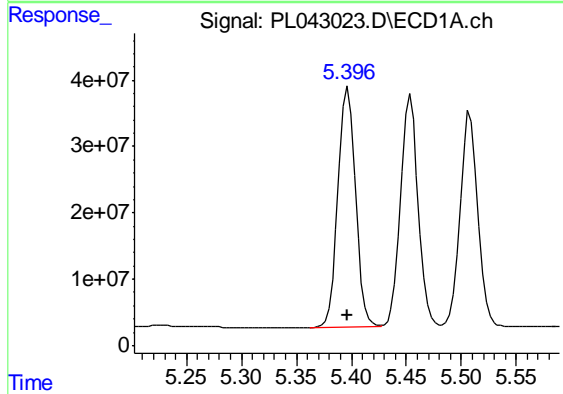
R.T.: 5.508 min
 Delta R.T.: 0.000 min
 Response: 366559576
 Conc: 50.04 ng/ml

Instrument :
 ECD_L
 ClientSampleId :
 PB115576BS



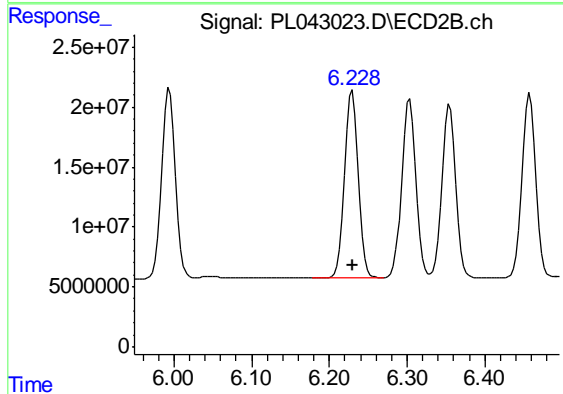
#9 Endosulfan I

R.T.: 6.355 min
 Delta R.T.: 0.000 min
 Response: 177609583
 Conc: 52.31 ng/ml



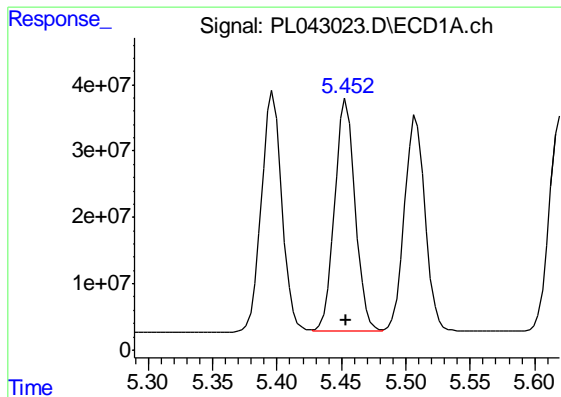
#10 gamma-Chlordane

R.T.: 5.397 min
 Delta R.T.: 0.000 min
 Response: 402429144
 Conc: 49.92 ng/ml



#10 gamma-Chlordane

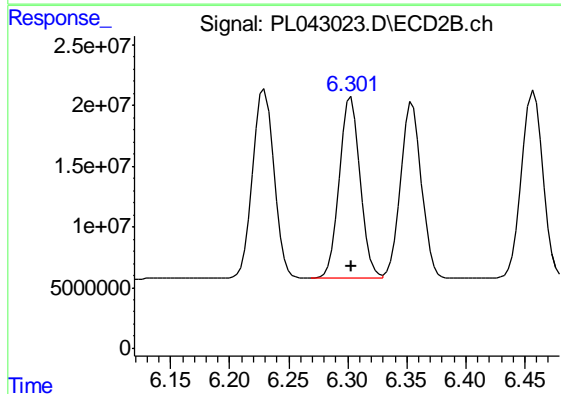
R.T.: 6.230 min
 Delta R.T.: 0.000 min
 Response: 193208964
 Conc: 52.59 ng/ml



#11 alpha-Chlordane

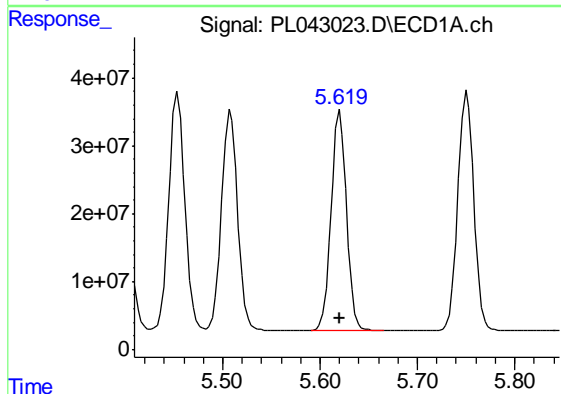
R.T.: 5.454 min
 Delta R.T.: 0.000 min
 Response: 391381569
 Conc: 49.30 ng/ml

Instrument :
 ECD_L
 ClientSampleId :
 PB115576BS



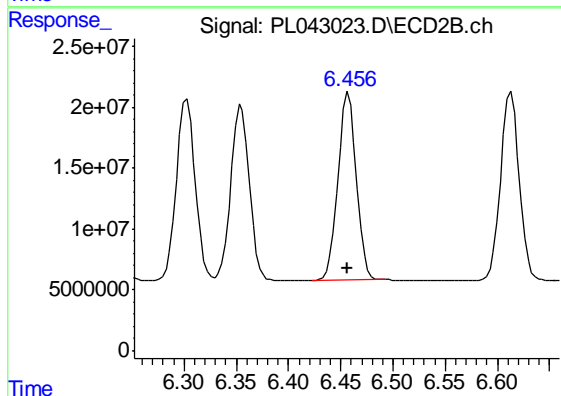
#11 alpha-Chlordane

R.T.: 6.303 min
 Delta R.T.: 0.000 min
 Response: 186400309
 Conc: 51.83 ng/ml



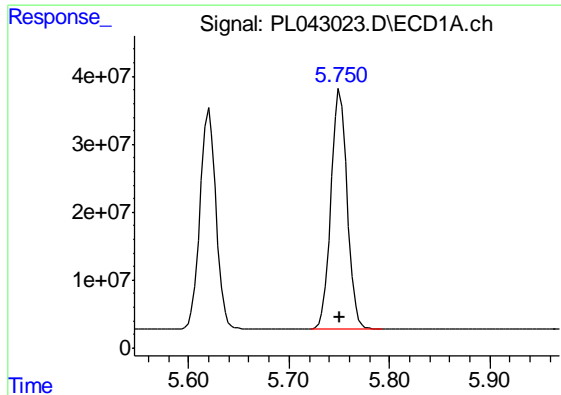
#12 4,4'-DDE

R.T.: 5.620 min
 Delta R.T.: 0.000 min
 Response: 357162347
 Conc: 51.59 ng/ml



#12 4,4'-DDE

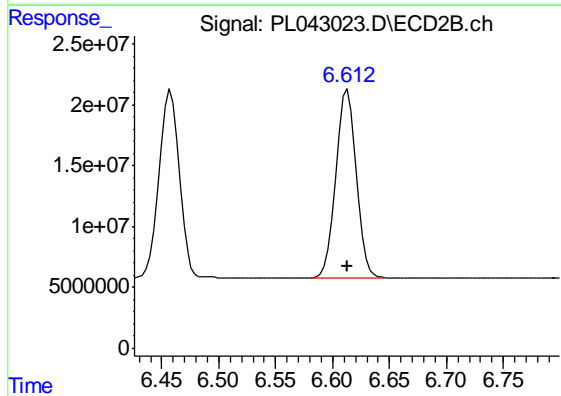
R.T.: 6.458 min
 Delta R.T.: 0.000 min
 Response: 189590668
 Conc: 52.32 ng/ml



#13 Dieldrin

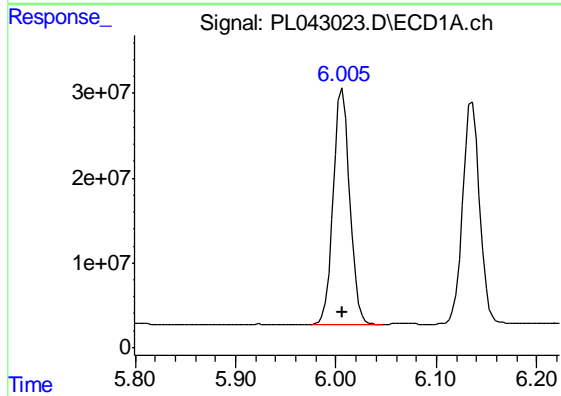
R.T.: 5.751 min
 Delta R.T.: 0.000 min
 Response: 394945403
 Conc: 50.80 ng/ml

Instrument :
 ECD_L
 ClientSampleId :
 PB115576BS



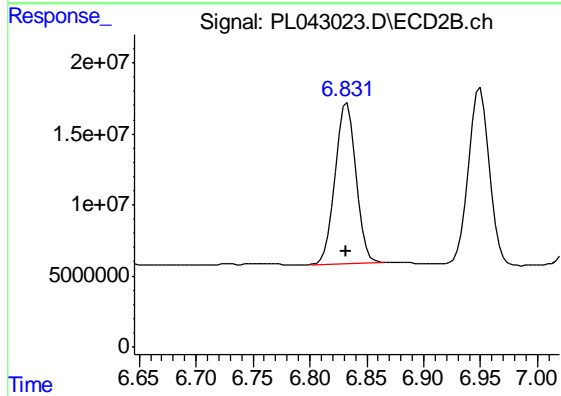
#13 Dieldrin

R.T.: 6.613 min
 Delta R.T.: 0.000 min
 Response: 190334409
 Conc: 52.50 ng/ml



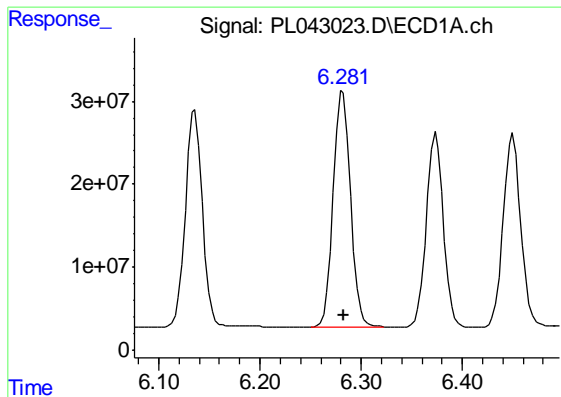
#14 Endrin

R.T.: 6.007 min
 Delta R.T.: 0.000 min
 Response: 316564489
 Conc: 43.96 ng/ml



#14 Endrin

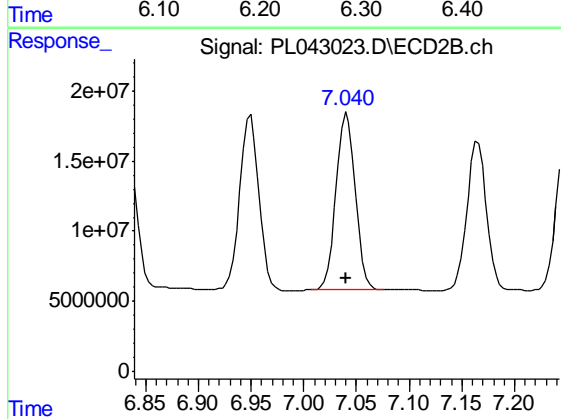
R.T.: 6.833 min
 Delta R.T.: 0.000 min
 Response: 141953538
 Conc: 45.47 ng/ml



#15 Endosulfan II

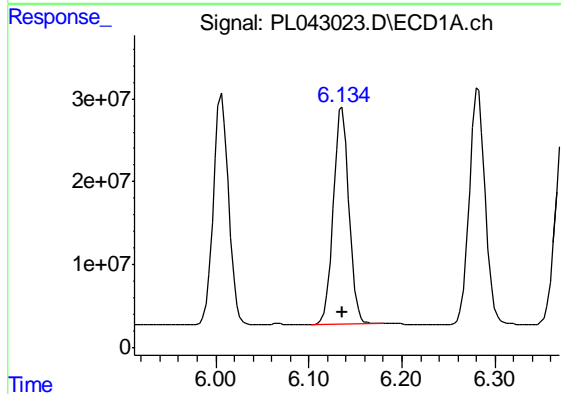
R.T.: 6.282 min
Delta R.T.: 0.000 min
Response: 336026741
Conc: 50.51 ng/ml

Instrument :
ECD_L
ClientSampleId :
PB115576BS



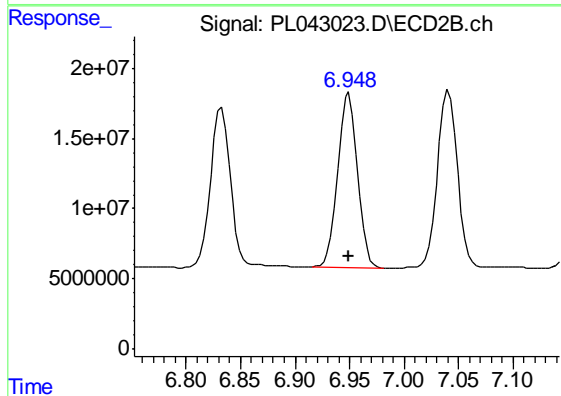
#15 Endosulfan II

R.T.: 7.041 min
Delta R.T.: 0.000 min
Response: 160118507
Conc: 52.88 ng/ml



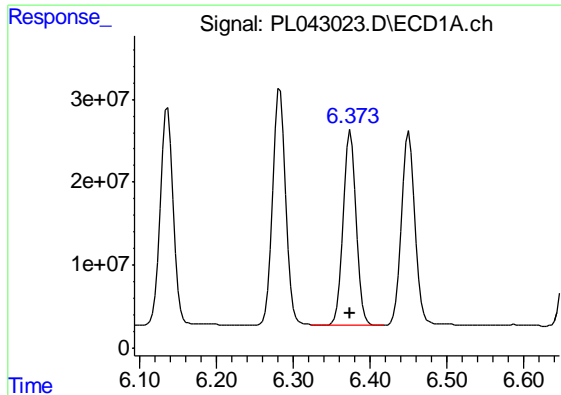
#16 4,4'-DDD

R.T.: 6.136 min
Delta R.T.: 0.000 min
Response: 305929099
Conc: 53.95 ng/ml



#16 4,4'-DDD

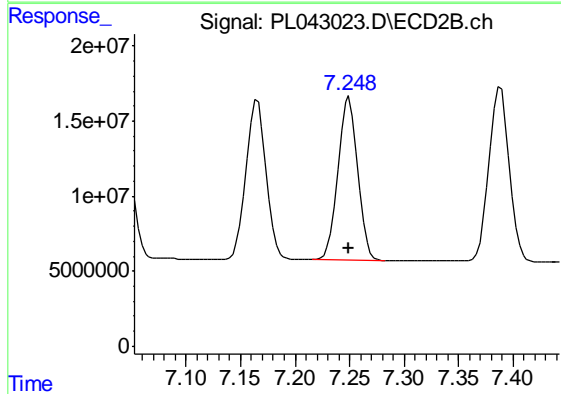
R.T.: 6.950 min
Delta R.T.: 0.000 min
Response: 157030261
Conc: 53.55 ng/ml



#17 4,4'-DDT

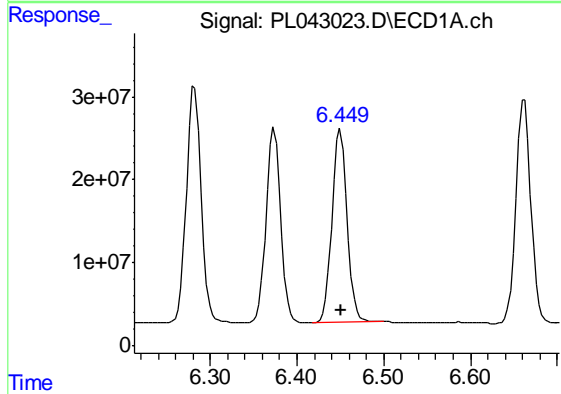
R.T.: 6.374 min
 Delta R.T.: 0.000 min
 Response: 273948394
 Conc: 46.05 ng/ml

Instrument :
 ECD_L
 ClientSampled :
 PB115576BS



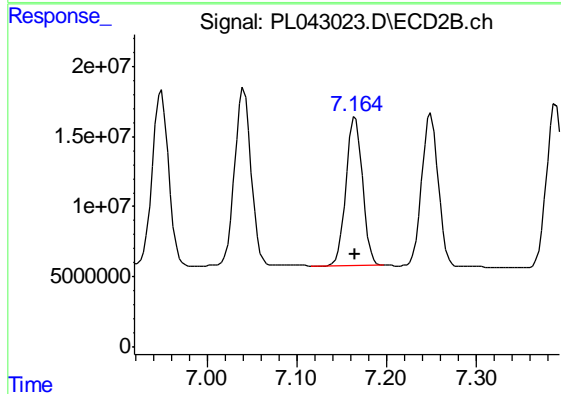
#17 4,4'-DDT

R.T.: 7.250 min
 Delta R.T.: 0.000 min
 Response: 136622597
 Conc: 46.52 ng/ml



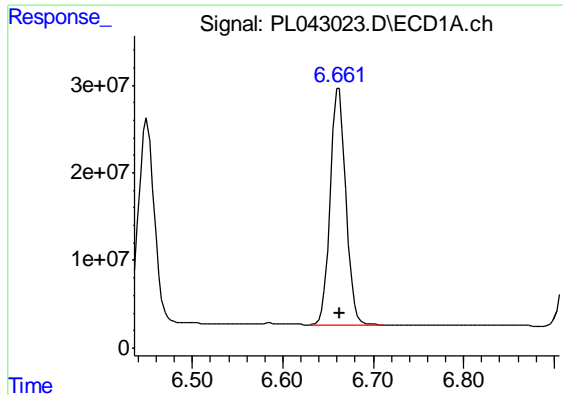
#18 Endrin aldehyde

R.T.: 6.450 min
 Delta R.T.: 0.000 min
 Response: 282472270
 Conc: 51.26 ng/ml



#18 Endrin aldehyde

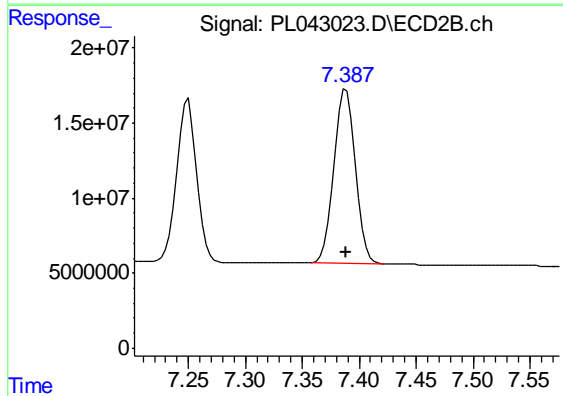
R.T.: 7.165 min
 Delta R.T.: 0.000 min
 Response: 134860942
 Conc: 53.77 ng/ml



#19 Endosulfan Sulfate

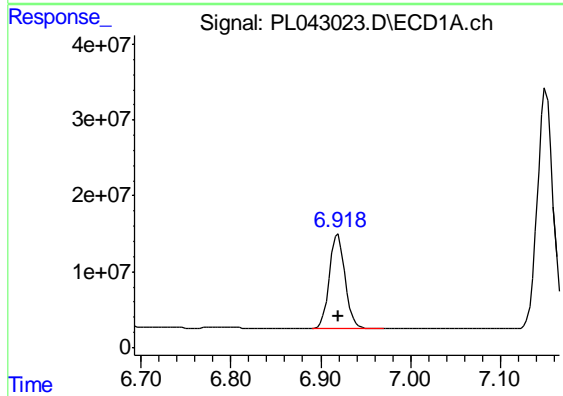
R.T.: 6.662 min
 Delta R.T.: 0.000 min
 Response: 324161421
 Conc: 48.39 ng/ml

Instrument :
 ECD_L
 ClientSampleId :
 PB115576BS



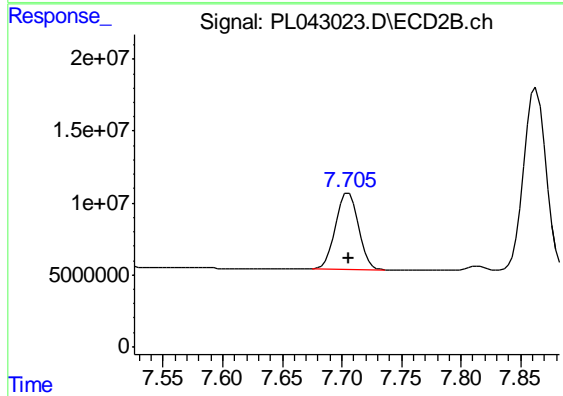
#19 Endosulfan Sulfate

R.T.: 7.389 min
 Delta R.T.: 0.000 min
 Response: 150817065
 Conc: 50.16 ng/ml



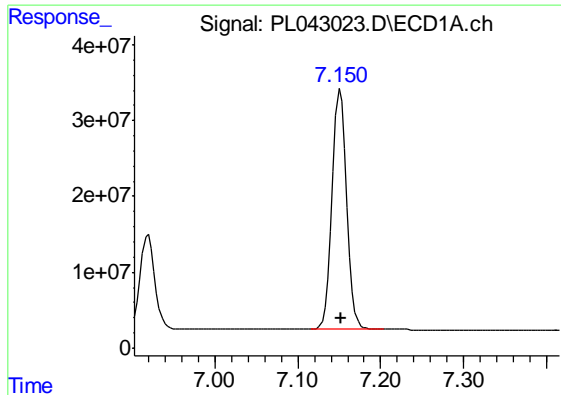
#20 Methoxychlor

R.T.: 6.919 min
 Delta R.T.: 0.000 min
 Response: 150804592
 Conc: 44.94 ng/ml



#20 Methoxychlor

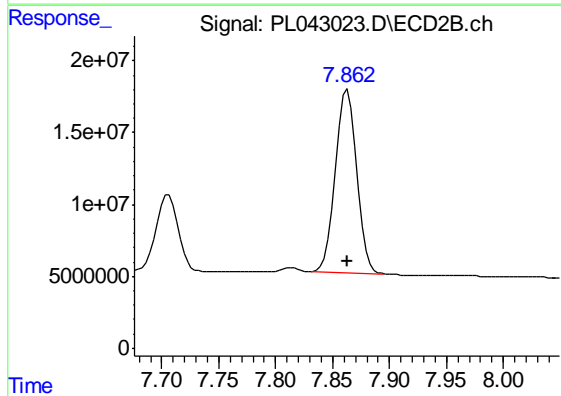
R.T.: 7.706 min
 Delta R.T.: 0.000 min
 Response: 70207389
 Conc: 46.55 ng/ml



#21 Endrin ketone

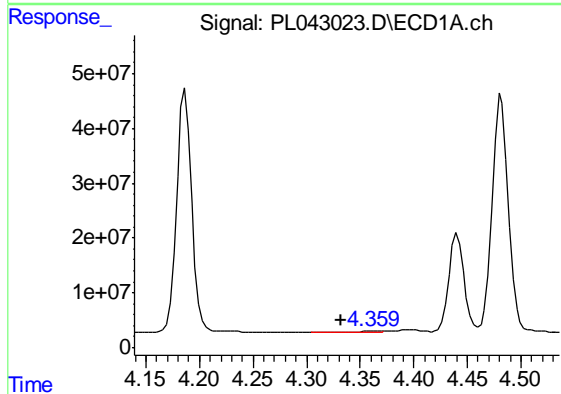
R.T.: 7.151 min
 Delta R.T.: -0.001 min
 Response: 385673987
 Conc: 53.34 ng/ml

Instrument :
 ECD_L
 ClientSampleId :
 PB115576BS



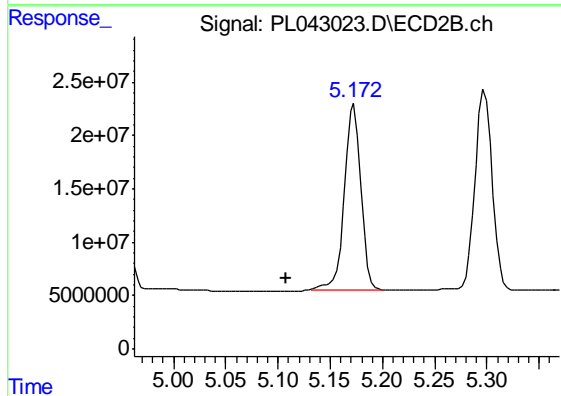
#21 Endrin ketone

R.T.: 7.863 min
 Delta R.T.: 0.000 min
 Response: 164799330
 Conc: 53.92 ng/ml



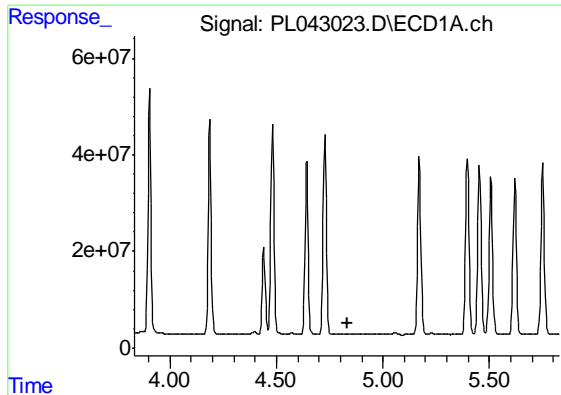
#23 Chlordane-1

R.T.: 4.361 min
 Delta R.T.: 0.029 min
 Response: 741628
 Conc: 2.76 ng/ml



#23 Chlordane-1

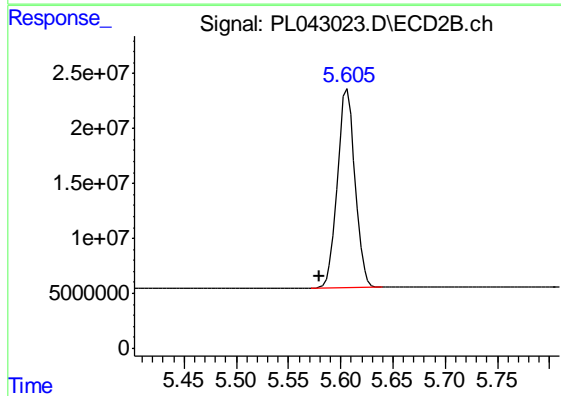
R.T.: 5.173 min
 Delta R.T.: 0.065 min
 Response: 191333401
 Conc: 1353.78 ng/ml



#24 Chlordane-2

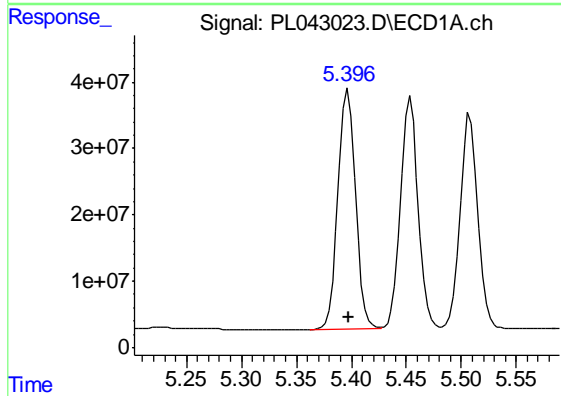
R.T.: 0.000 min
 Exp R.T. : 4.832 min
 Response: 0
 Conc: N.D.

Instrument :
 ECD_L
 ClientSampleId :
 PB115576BS



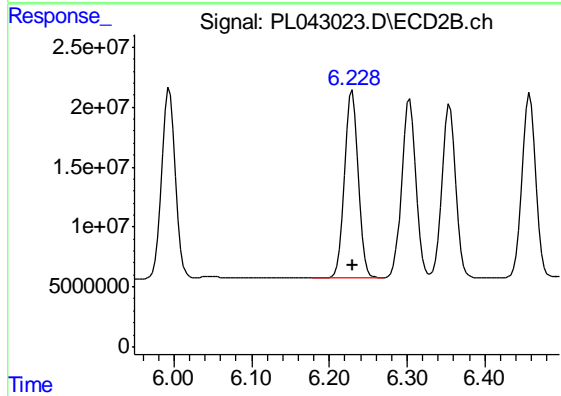
#24 Chlordane-2

R.T.: 5.606 min
 Delta R.T.: 0.027 min
 Response: 212980066
 Conc: 1484.78 ng/ml



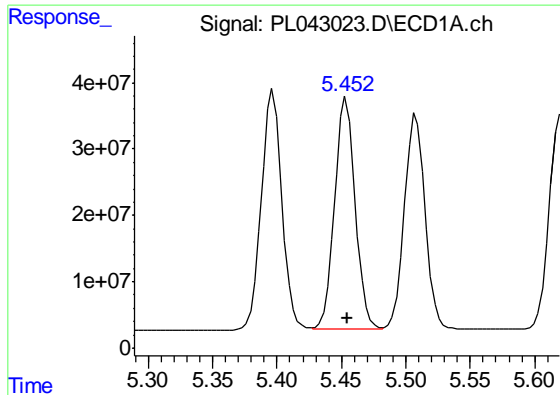
#25 Chlordane-3

R.T.: 5.397 min
 Delta R.T.: -0.001 min
 Response: 402429144
 Conc: 484.25 ng/ml



#25 Chlordane-3

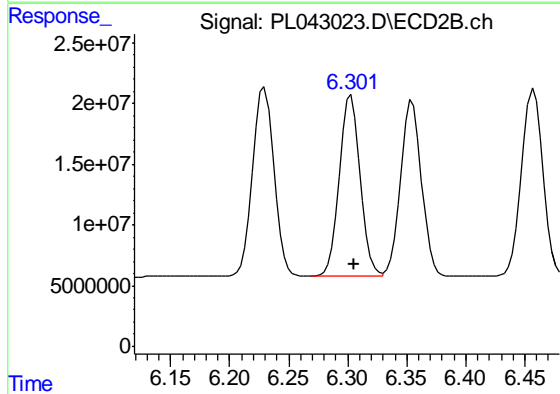
R.T.: 6.230 min
 Delta R.T.: 0.000 min
 Response: 193208964
 Conc: 393.44 ng/ml



#26 Chlordane-4

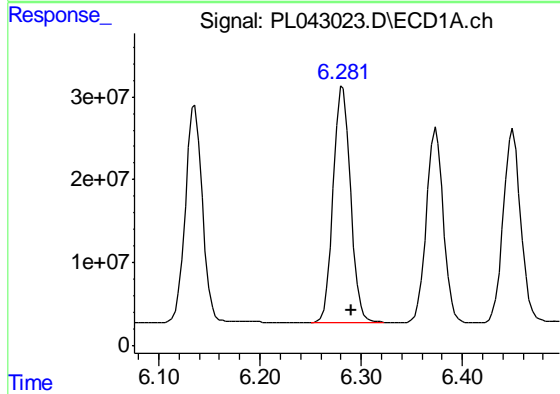
R.T.: 5.454 min
Delta R.T.: -0.001 min
Response: 391381569
Conc: 517.63 ng/ml

Instrument :
ECD_L
ClientSampleId :
PB115576BS



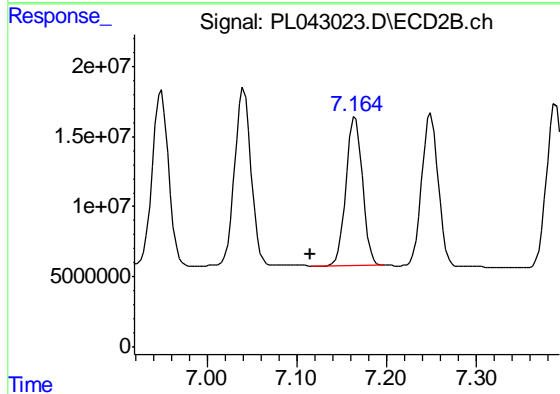
#26 Chlordane-4

R.T.: 6.303 min
Delta R.T.: -0.002 min
Response: 186400309
Conc: 326.59 ng/ml



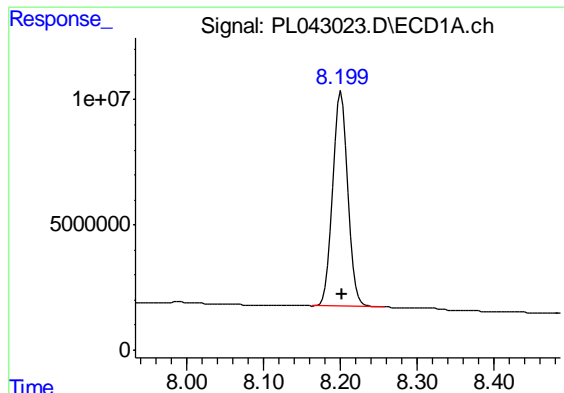
#27 Chlordane-5

R.T.: 6.282 min
Delta R.T.: -0.008 min
Response: 336026741
Conc: 1400.96 ng/ml



#27 Chlordane-5

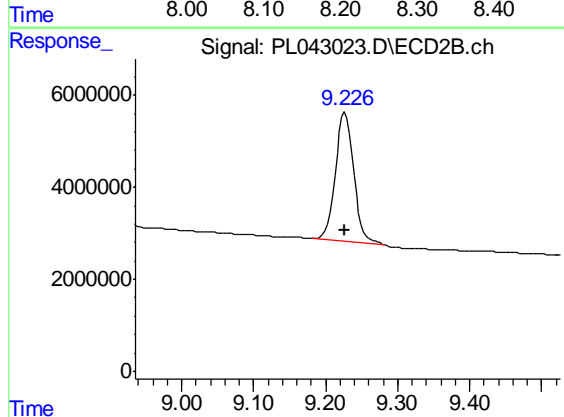
R.T.: 7.165 min
Delta R.T.: 0.050 min
Response: 134860942
Conc: 1150.31 ng/ml



#28 Decachlorobiphenyl

R.T.: 8.201 min
Delta R.T.: 0.000 min
Response: 117966585
Conc: 18.07 ng/ml

Instrument :
ECD_L
ClientSampleId :
PB115576BS



#28 Decachlorobiphenyl

R.T.: 9.227 min
Delta R.T.: 0.000 min
Response: 49092843
Conc: 18.82 ng/ml