

Data Path : Z:\pestpcbsrv\HPCHEM1\ECD_L\Data\PL1121222\
 Data File : PL079688.D
 Signal(s) : Signal #1: ECD1A.ch Signal #2: ECD2B.ch
 Acq On : 12 Dec 2022 17:49
 Operator : AR\AJ
 Sample : PSTDCCC050
 Misc :
 ALS Vial : 4 Sample Multiplier: 1

Instrument :
 ECD_L
 ClientSampleId :
 PSTDCCC050

Integration File signal 1: autoint1.e
 Integration File signal 2: autoint2.e
 Quant Time: Dec 12 20:43:18 2022
 Quant Method : Z:\pestpcbsrv\HPCHEM1\ECD_L\methods\PL112322.M
 Quant Title : GC Extractables
 QLast Update : Thu Nov 24 00:09:49 2022
 Response via : Initial Calibration
 Integrator: ChemStation

Volume Inj. : 1 µl
 Signal #1 Phase : ZB-MR2 Signal #2 Phase: ZB-MR1
 Signal #1 Info : 30M x 0.32mm x0.2 Signal #2 Info : 30M x 0.32mm x0.5µm

	Compound	RT#1	RT#2	Resp#1	Resp#2	ng/ml	ng/ml

System Monitoring Compounds							
1)	SA Tetrachlo...	3.317	2.564	116.7E6	141.8E6	51.664	52.080
28)	SA Decachlor...	8.765	7.630	96731952	115.8E6	49.808	49.306
Target Compounds							
2)	A alpha-BHC	3.777	3.050	182.8E6	229.0E6	53.148	53.107
3)	MA gamma-BHC...	4.110	3.371	170.1E6	206.1E6	52.496	52.927
4)	MA Heptachlor	4.680	3.697	165.9E6	194.5E6	50.335	50.536
5)	MB Aldrin	5.018	3.969	160.0E6	195.3E6	51.513	52.603
6)	B beta-BHC	4.326	3.672	73003513	77845329	51.704	51.377
7)	B delta-BHC	4.566	3.891	158.1E6	203.9E6	56.992	52.992
8)	B Heptachlo...	5.451	4.465	147.2E6	176.2E6	51.570	52.205
9)	A Endosulfan I	5.836	4.828	136.4E6	166.7E6	51.292	52.088
10)	B gamma-Chl...	5.707	4.713	149.1E6	177.7E6	52.095	52.511
11)	B alpha-Chl...	5.784	4.774	146.9E6	173.7E6	50.967	51.853
12)	B 4,4'-DDE	5.967	4.970	129.8E6	165.4E6	51.952	53.944
13)	MA Dieldrin	6.113	5.089	139.0E6	176.5E6	50.681	52.348
14)	MA Endrin	6.345	5.360	114.6E6	147.6E6	47.386	48.788
15)	B Endosulfa...	6.575	5.657	113.4E6	142.3E6	50.230	50.840
16)	A 4,4'-DDD	6.492	5.520	111.3E6	144.0E6	56.084	57.554
17)	MA 4,4'-DDT	6.801	5.767	102.1E6	123.0E6	45.013	47.054
18)	B Endrin al...	6.706	5.835	92119602	109.1E6	50.862	51.263
19)	B Endosulfa...	6.938	6.058	117.8E6	143.1E6	50.786	50.732
20)	A Methoxychlor	7.286	6.344	53644065	63303062	44.467	46.575
21)	B Endrin ke...	7.425	6.554	129.4E6	165.6E6	52.430	53.769
22)	Mirex	7.882	6.725	94669517	117.4E6	49.981	49.635

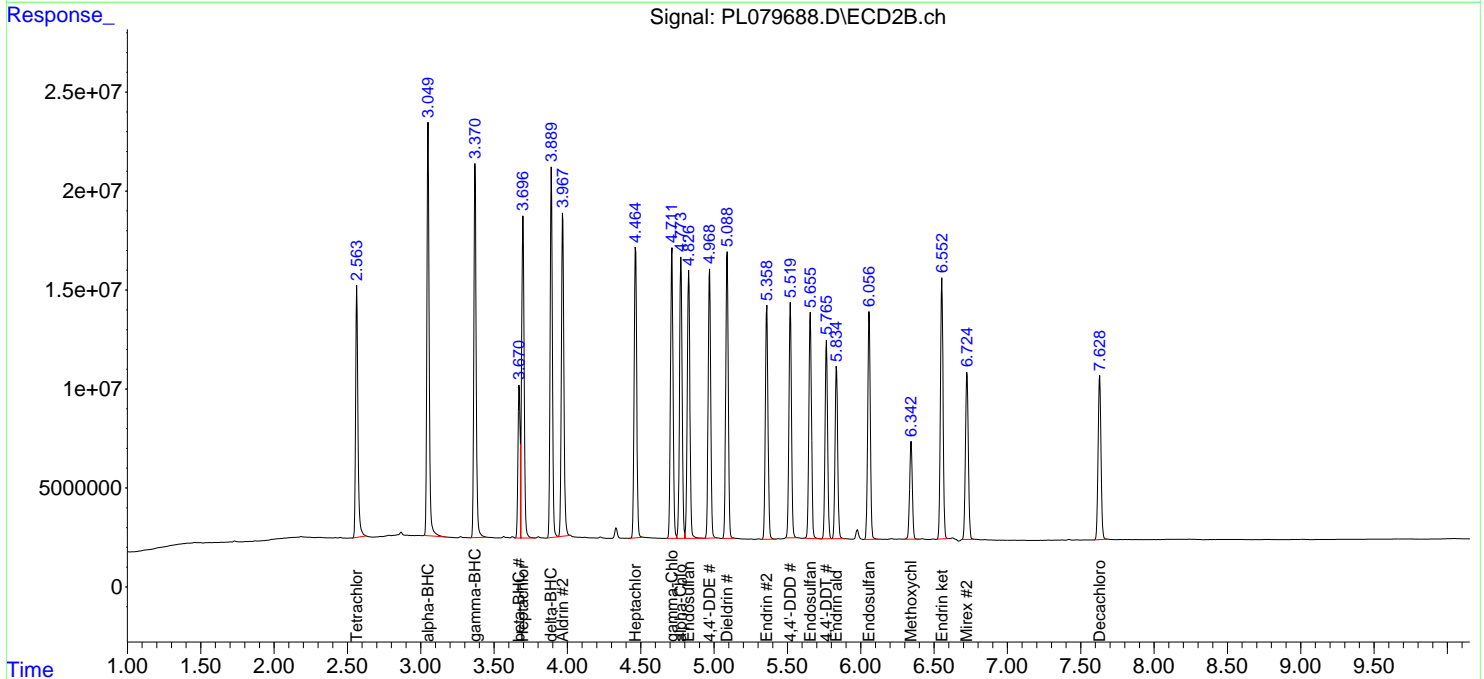
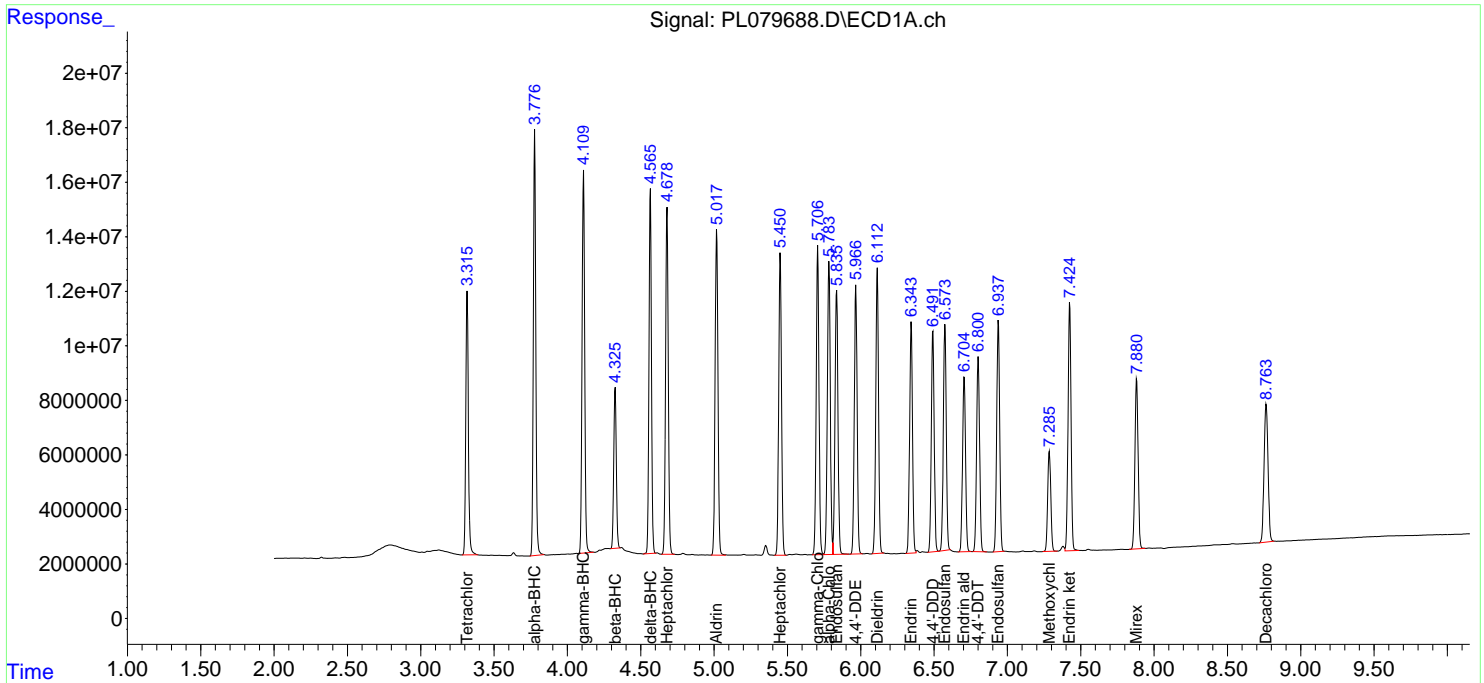
(f)=RT Delta > 1/2 Window (#)=Amounts differ by > 25% (m)=manual int.

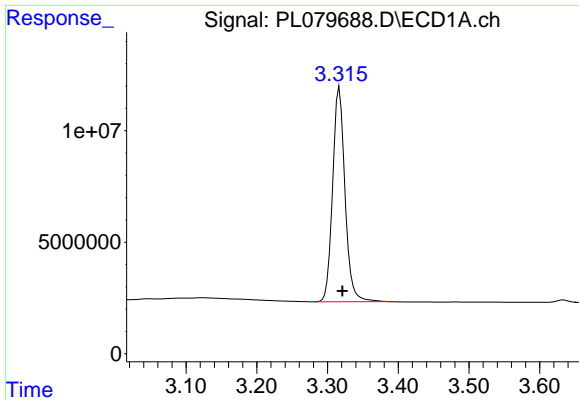
Data Path : Z:\pestpcbsrv\HPCHEM1\ECD_L\Data\PL121222\
 Data File : PL079688.D
 Signal(s) : Signal #1: ECD1A.ch Signal #2: ECD2B.ch
 Acq On : 12 Dec 2022 17:49
 Operator : AR\AJ
 Sample : PSTDCCC050
 Misc :
 ALS Vial : 4 Sample Multiplier: 1

Instrument :
 ECD_L
ClientSampleId :
 PSTDCCC050

Integration File signal 1: autoint1.e
 Integration File signal 2: autoint2.e
 Quant Time: Dec 12 20:43:18 2022
 Quant Method : Z:\pestpcbsrv\HPCHEM1\ECD_L\methods\PL112322.M
 Quant Title : GC Extractables
 QLast Update : Thu Nov 24 00:09:49 2022
 Response via : Initial Calibration
 Integrator: ChemStation

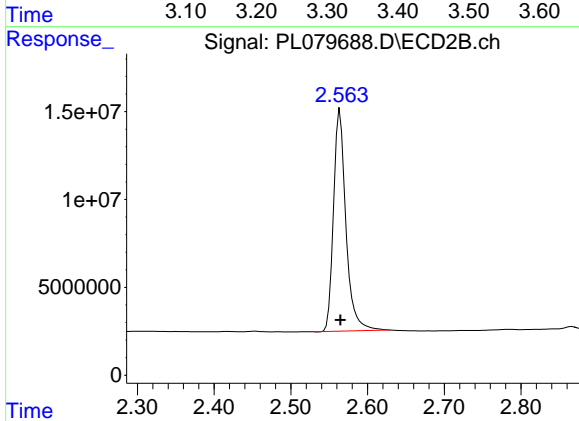
Volume Inj. : 1 µl
 Signal #1 Phase : ZB-MR2 Signal #2 Phase: ZB-MR1
 Signal #1 Info : 30M x 0.32mm x0.2 Signal #2 Info : 30M x 0.32mm x0.5µm



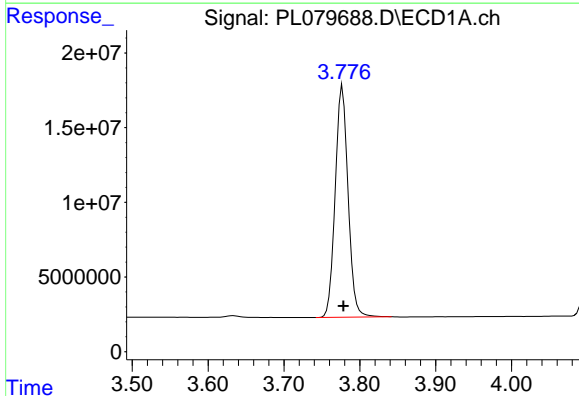


#1 Tetrachloro-m-xylene
 R.T.: 3.317 min
 Delta R.T.: -0.004 min
 Response: 116710018
 Conc: 51.66 ng/ml

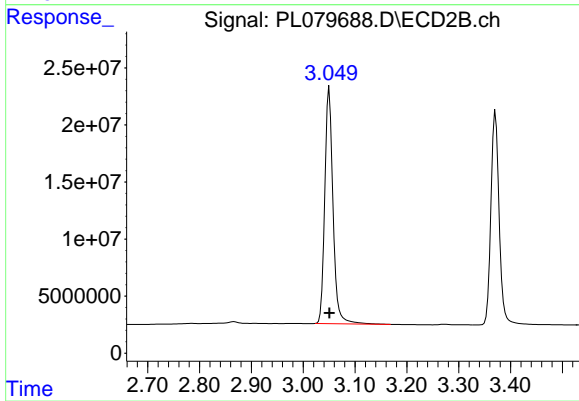
Instrument :
 ECD_L
 ClientSampleId :
 PSTDCCC050



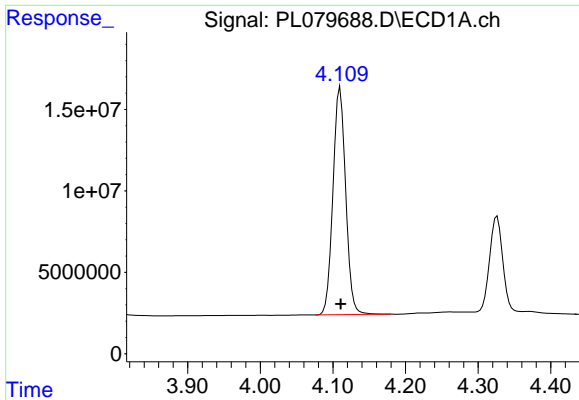
#1 Tetrachloro-m-xylene
 R.T.: 2.564 min
 Delta R.T.: 0.000 min
 Response: 141763548
 Conc: 52.08 ng/ml



#2 alpha-BHC
 R.T.: 3.777 min
 Delta R.T.: 0.000 min
 Response: 182762593
 Conc: 53.15 ng/ml

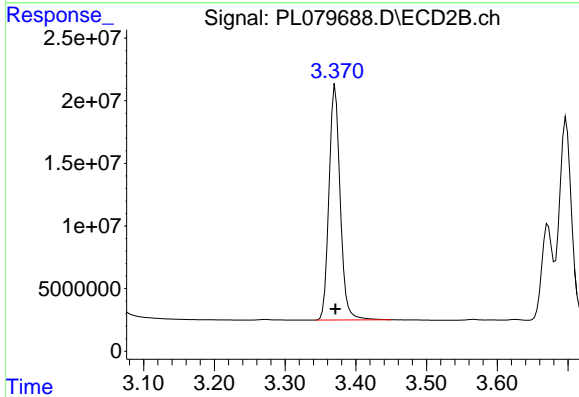


#2 alpha-BHC
 R.T.: 3.050 min
 Delta R.T.: 0.000 min
 Response: 228998302
 Conc: 53.11 ng/ml

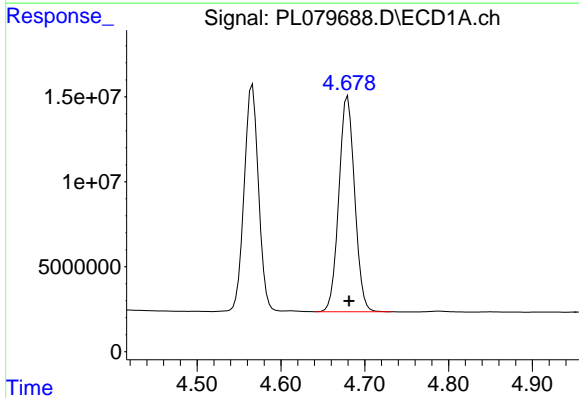


#3 gamma-BHC (Lindane)
 R.T.: 4.110 min
 Delta R.T.: 0.000 min
 Response: 170127921
 Conc: 52.50 ng/ml

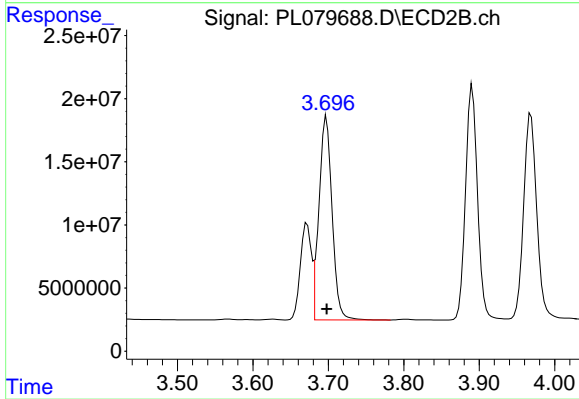
Instrument :
 ECD_L
 ClientSampleId :
 PSTDCCC050



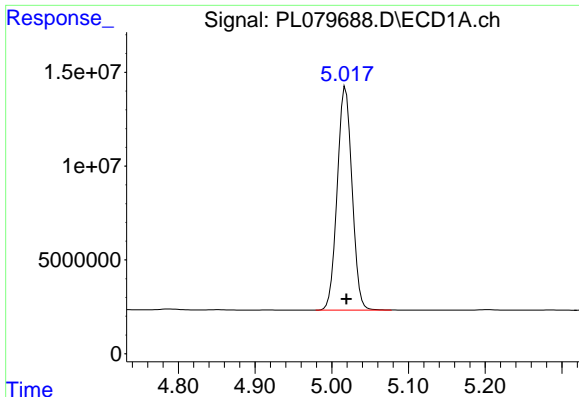
#3 gamma-BHC (Lindane)
 R.T.: 3.371 min
 Delta R.T.: 0.000 min
 Response: 206079394
 Conc: 52.93 ng/ml



#4 Heptachlor
 R.T.: 4.680 min
 Delta R.T.: -0.002 min
 Response: 165864413
 Conc: 50.33 ng/ml



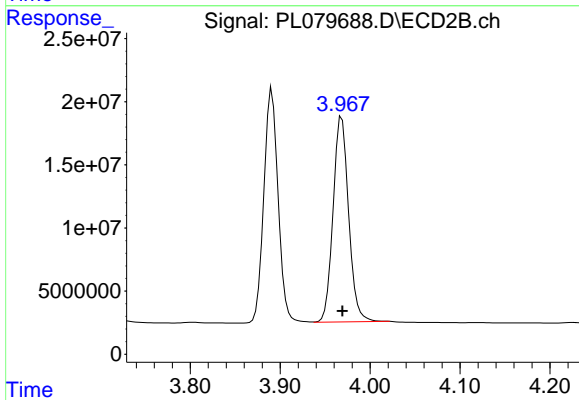
#4 Heptachlor
 R.T.: 3.697 min
 Delta R.T.: 0.000 min
 Response: 194451517
 Conc: 50.54 ng/ml



#5 Aldrin

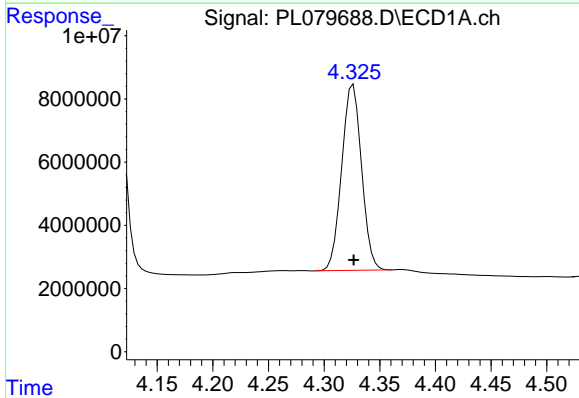
R.T.: 5.018 min
 Delta R.T.: -0.001 min
 Response: 159967400
 Conc: 51.51 ng/ml

Instrument :
 ECD_L
 ClientSampleId :
 PSTDCCC050



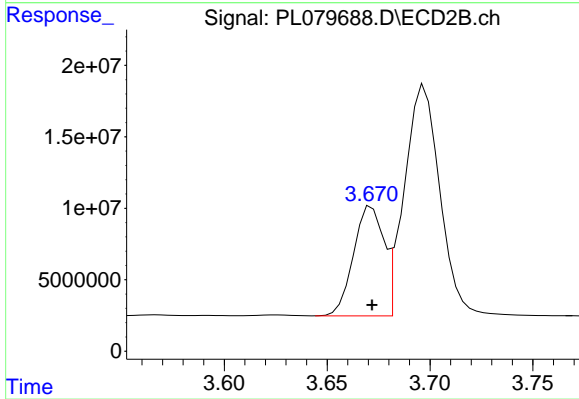
#5 Aldrin

R.T.: 3.969 min
 Delta R.T.: 0.000 min
 Response: 195309884
 Conc: 52.60 ng/ml



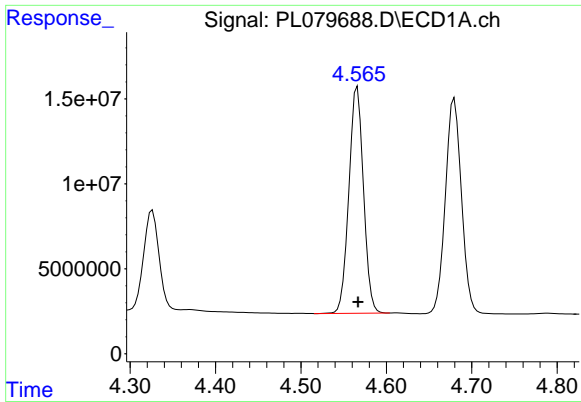
#6 beta-BHC

R.T.: 4.326 min
 Delta R.T.: 0.000 min
 Response: 73003513
 Conc: 51.70 ng/ml



#6 beta-BHC

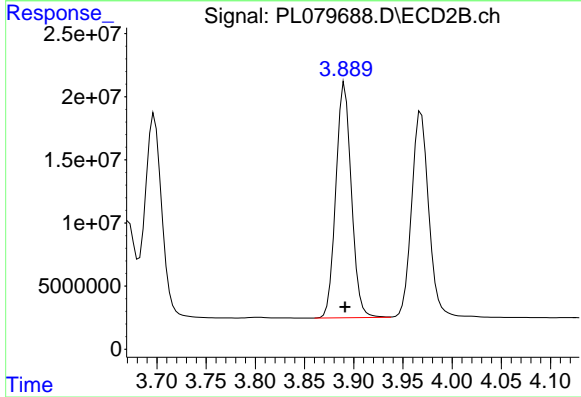
R.T.: 3.672 min
 Delta R.T.: 0.000 min
 Response: 77845329
 Conc: 51.38 ng/ml



#7 delta-BHC

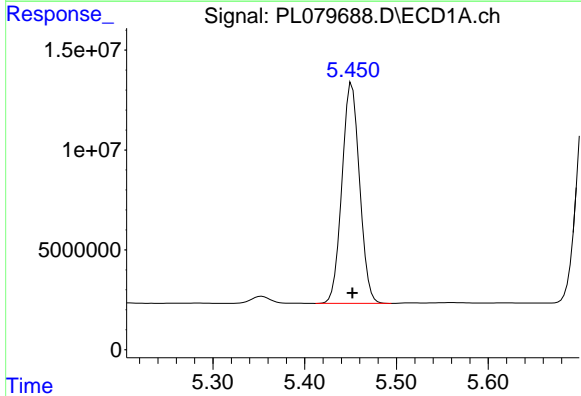
R.T.: 4.566 min
 Delta R.T.: 0.000 min
 Response: 158116844
 Conc: 56.99 ng/ml

Instrument :
 ECD_L
 ClientSampleId :
 PSTDCCC050



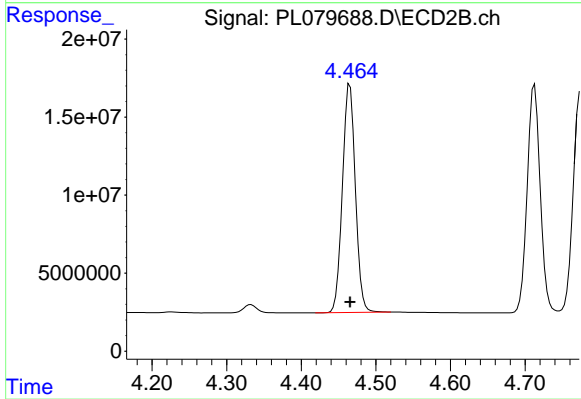
#7 delta-BHC

R.T.: 3.891 min
 Delta R.T.: 0.000 min
 Response: 203871957
 Conc: 52.99 ng/ml



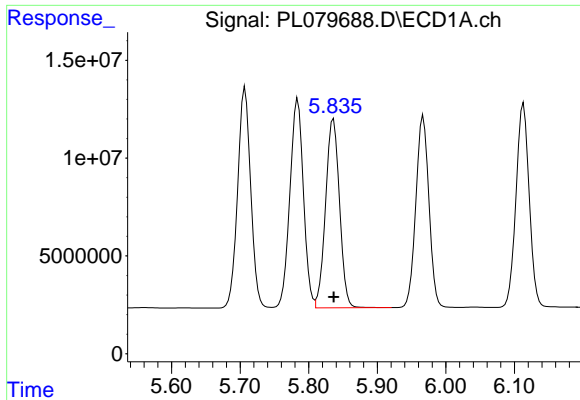
#8 Heptachlor epoxide

R.T.: 5.451 min
 Delta R.T.: 0.000 min
 Response: 147231847
 Conc: 51.57 ng/ml



#8 Heptachlor epoxide

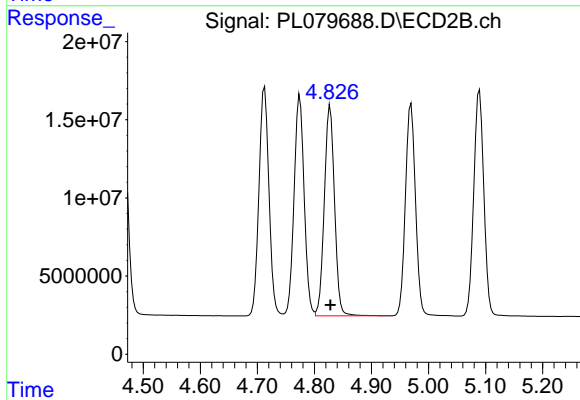
R.T.: 4.465 min
 Delta R.T.: 0.000 min
 Response: 176211138
 Conc: 52.21 ng/ml



#9 Endosulfan I

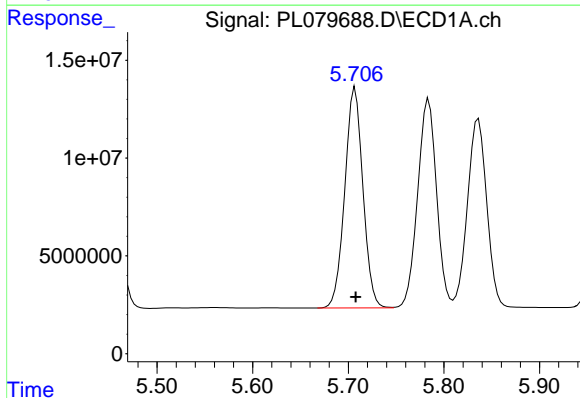
R.T.: 5.836 min
 Delta R.T.: 0.000 min
 Response: 136371153
 Conc: 51.29 ng/ml

Instrument :
 ECD_L
 ClientSampleId :
 PSTDCCC050



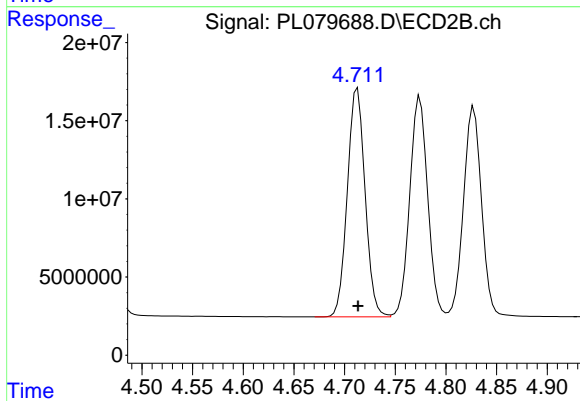
#9 Endosulfan I

R.T.: 4.828 min
 Delta R.T.: 0.000 min
 Response: 166672415
 Conc: 52.09 ng/ml



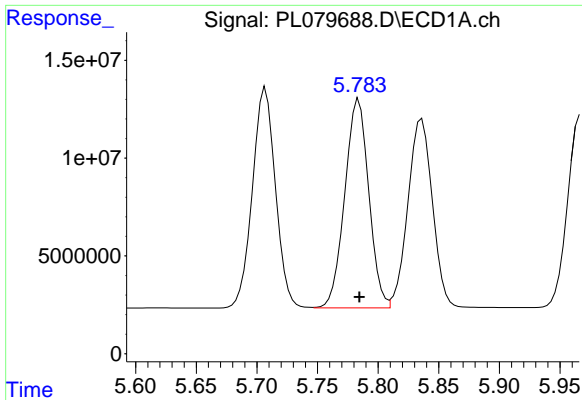
#10 gamma-Chlordane

R.T.: 5.707 min
 Delta R.T.: 0.000 min
 Response: 149053007
 Conc: 52.09 ng/ml



#10 gamma-Chlordane

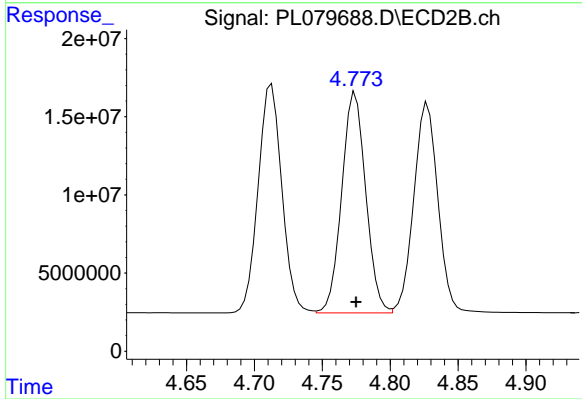
R.T.: 4.713 min
 Delta R.T.: 0.000 min
 Response: 177711064
 Conc: 52.51 ng/ml



#11 alpha-Chlordane

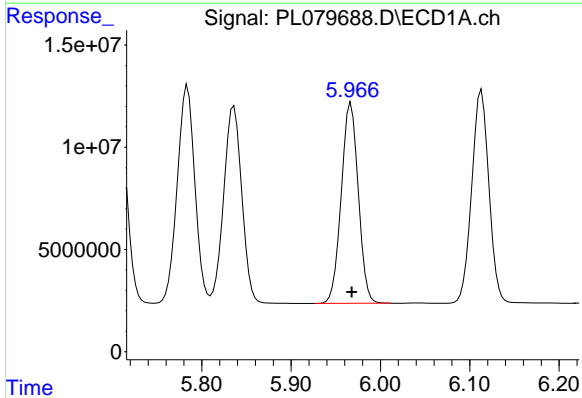
R.T.: 5.784 min
 Delta R.T.: 0.000 min
 Response: 146865035
 Conc: 50.97 ng/ml

Instrument :
 ECD_L
 ClientSampleId :
 PSTDCCC050



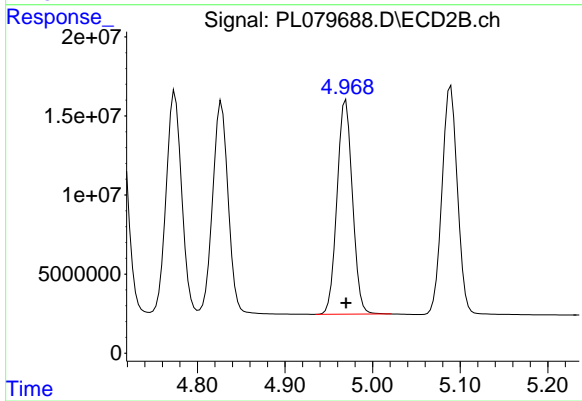
#11 alpha-Chlordane

R.T.: 4.774 min
 Delta R.T.: 0.000 min
 Response: 173665376
 Conc: 51.85 ng/ml



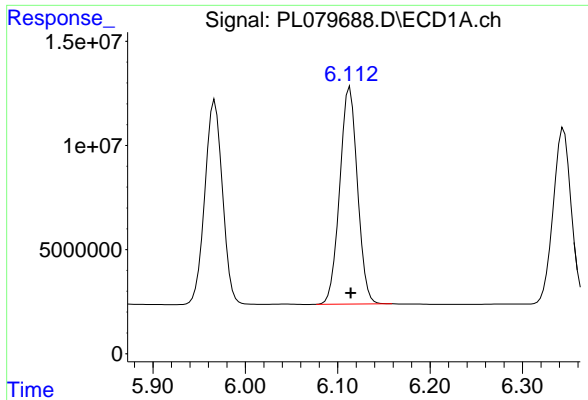
#12 4,4'-DDE

R.T.: 5.967 min
 Delta R.T.: 0.000 min
 Response: 129794941
 Conc: 51.95 ng/ml



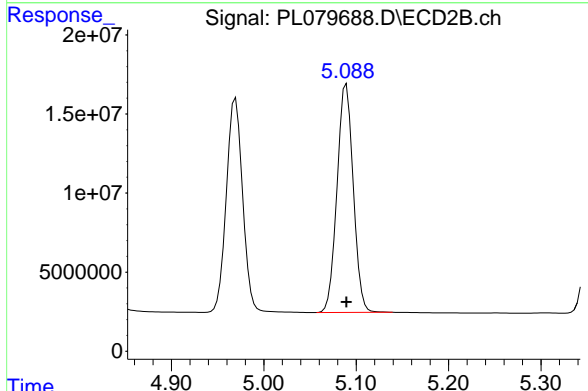
#12 4,4'-DDE

R.T.: 4.970 min
 Delta R.T.: 0.000 min
 Response: 165399656
 Conc: 53.94 ng/ml

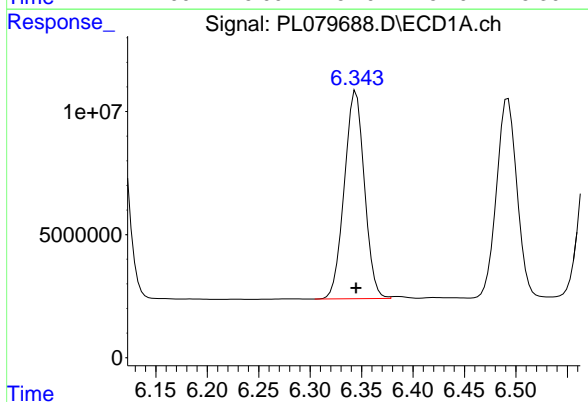


#13 Dieldrin
 R.T.: 6.113 min
 Delta R.T.: 0.000 min
 Response: 139009164
 Conc: 50.68 ng/ml

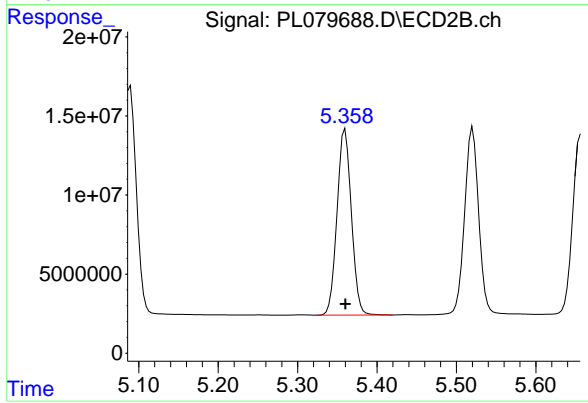
Instrument :
 ECD_L
 ClientSampleId :
 PSTDCCC050



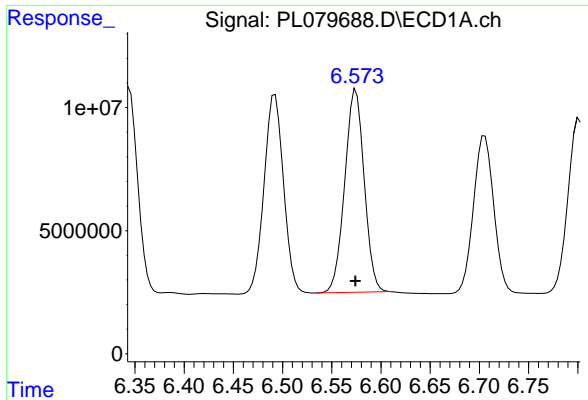
#13 Dieldrin
 R.T.: 5.089 min
 Delta R.T.: 0.000 min
 Response: 176474742
 Conc: 52.35 ng/ml



#14 Endrin
 R.T.: 6.345 min
 Delta R.T.: 0.000 min
 Response: 114636624
 Conc: 47.39 ng/ml



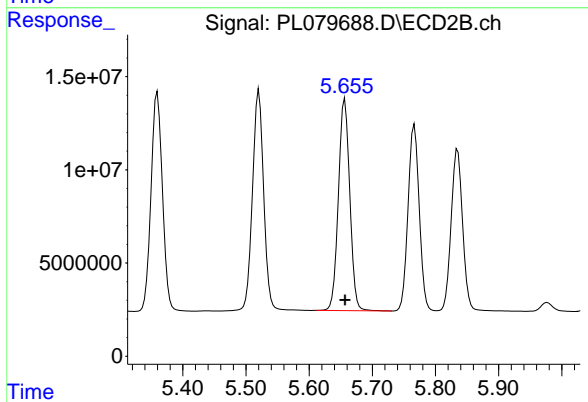
#14 Endrin
 R.T.: 5.360 min
 Delta R.T.: 0.000 min
 Response: 147570864
 Conc: 48.79 ng/ml



#15 Endosulfan II

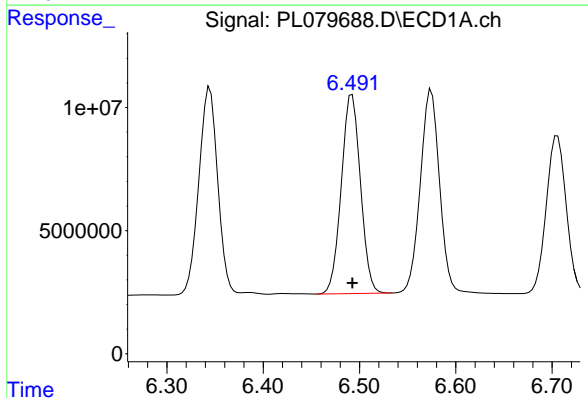
R.T.: 6.575 min
 Delta R.T.: 0.000 min
 Response: 113391505
 Conc: 50.23 ng/ml

Instrument :
 ECD_L
 ClientSampleId :
 PSTDCCC050



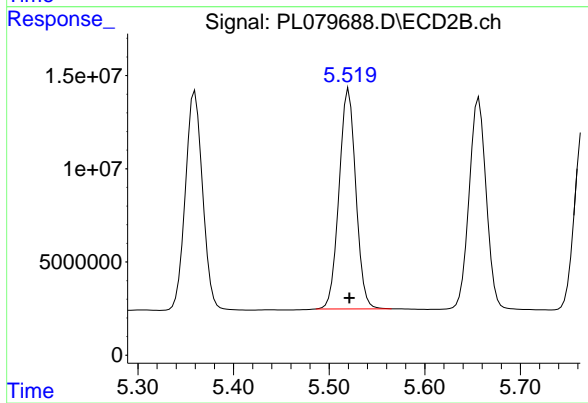
#15 Endosulfan II

R.T.: 5.657 min
 Delta R.T.: 0.000 min
 Response: 142262124
 Conc: 50.84 ng/ml



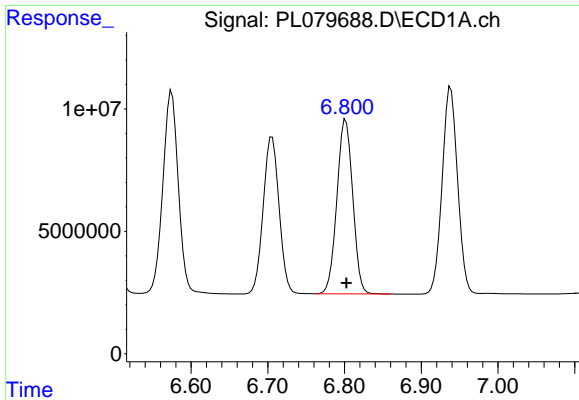
#16 4,4'-DDD

R.T.: 6.492 min
 Delta R.T.: 0.000 min
 Response: 111271385
 Conc: 56.08 ng/ml



#16 4,4'-DDD

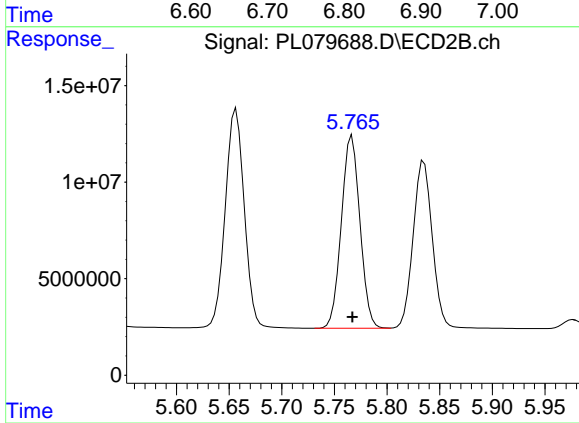
R.T.: 5.520 min
 Delta R.T.: 0.000 min
 Response: 143971397
 Conc: 57.55 ng/ml



#17 4,4'-DDT

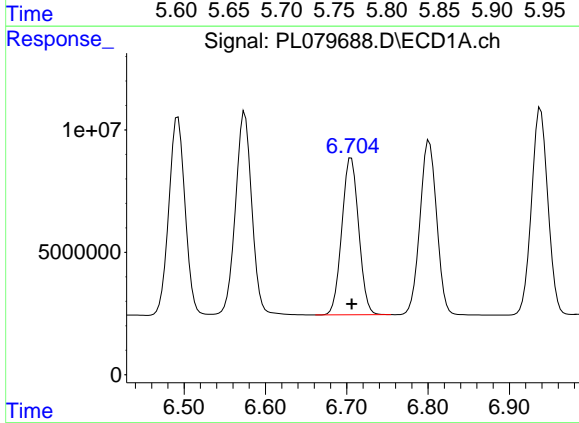
R.T.: 6.801 min
 Delta R.T.: 0.000 min
 Response: 102106169
 Conc: 45.01 ng/ml

Instrument :
 ECD_L
 ClientSampleId :
 PSTDCCC050



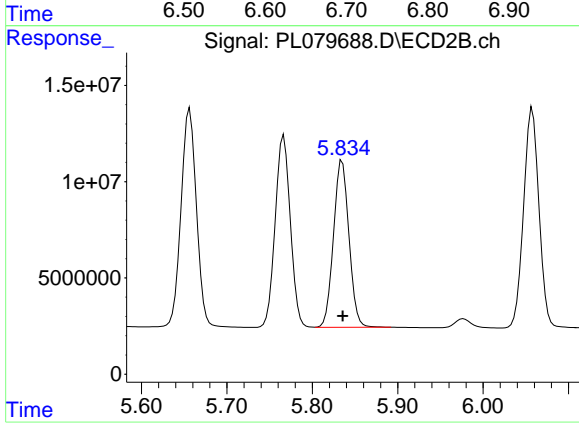
#17 4,4'-DDT

R.T.: 5.767 min
 Delta R.T.: 0.000 min
 Response: 122979923
 Conc: 47.05 ng/ml



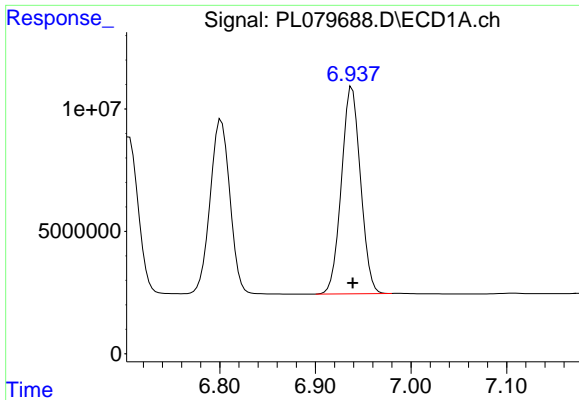
#18 Endrin aldehyde

R.T.: 6.706 min
 Delta R.T.: 0.000 min
 Response: 92119602
 Conc: 50.86 ng/ml



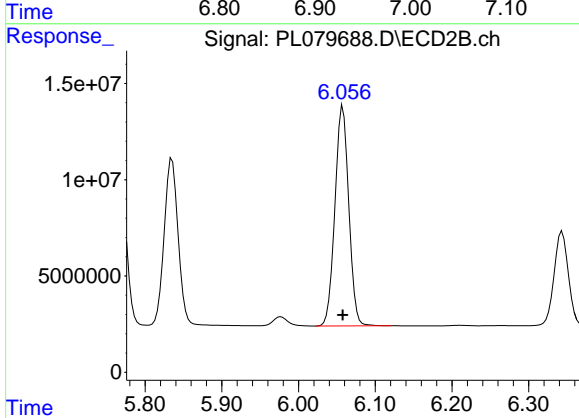
#18 Endrin aldehyde

R.T.: 5.835 min
 Delta R.T.: 0.000 min
 Response: 109109798
 Conc: 51.26 ng/ml

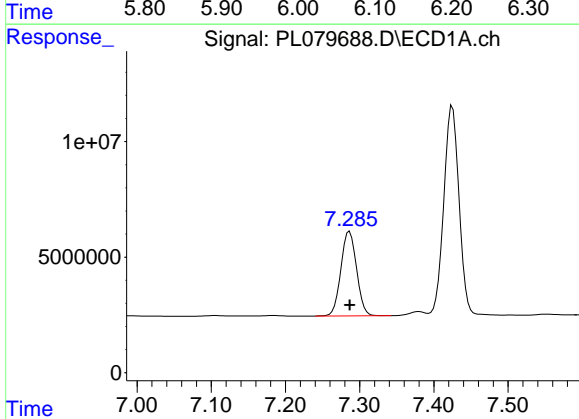


#19 Endosulfan Sulfate
 R.T.: 6.938 min
 Delta R.T.: 0.000 min
 Response: 117768446
 Conc: 50.79 ng/ml

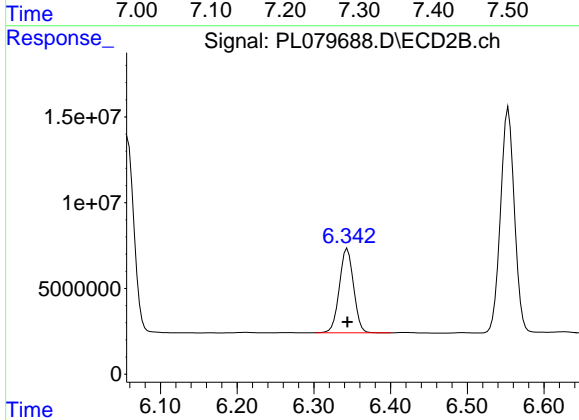
Instrument :
 ECD_L
 ClientSampleId :
 PSTDCCC050



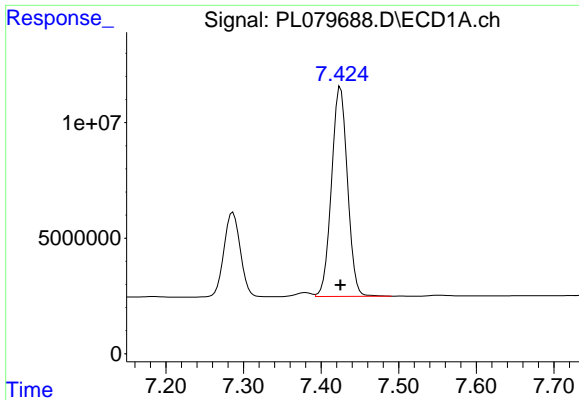
#19 Endosulfan Sulfate
 R.T.: 6.058 min
 Delta R.T.: 0.000 min
 Response: 143149574
 Conc: 50.73 ng/ml



#20 Methoxychlor
 R.T.: 7.286 min
 Delta R.T.: 0.000 min
 Response: 53644065
 Conc: 44.47 ng/ml



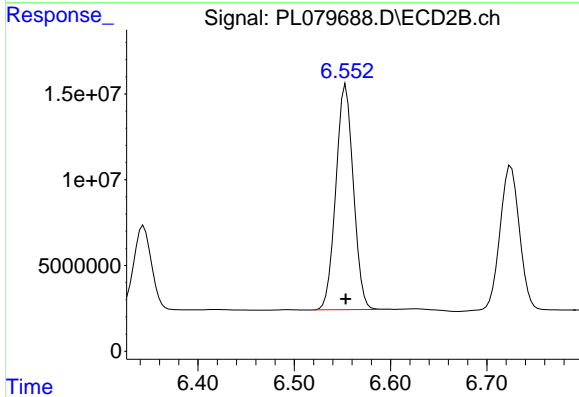
#20 Methoxychlor
 R.T.: 6.344 min
 Delta R.T.: 0.000 min
 Response: 63303062
 Conc: 46.57 ng/ml



#21 Endrin ketone

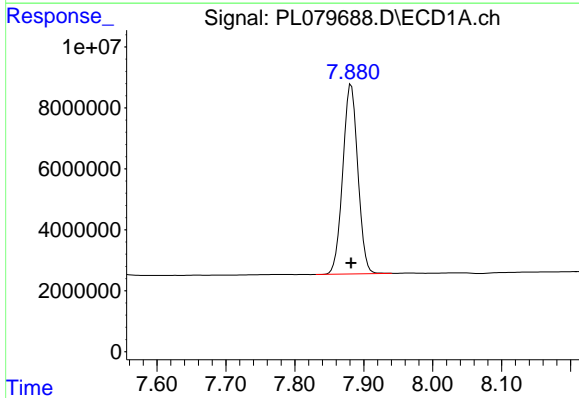
R.T.: 7.425 min
 Delta R.T.: 0.000 min
 Response: 129357460
 Conc: 52.43 ng/ml

Instrument :
 ECD_L
 ClientSampleId :
 PSTDCCC050



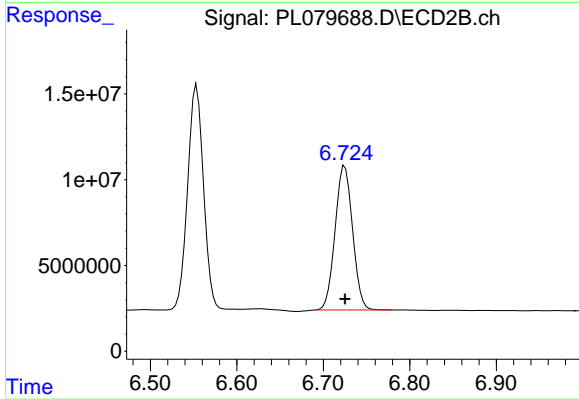
#21 Endrin ketone

R.T.: 6.554 min
 Delta R.T.: 0.000 min
 Response: 165602494
 Conc: 53.77 ng/ml



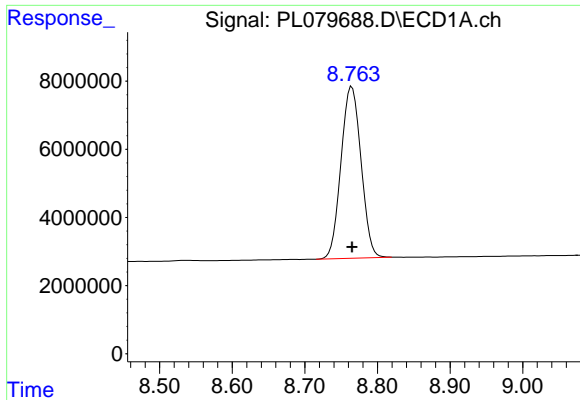
#22 Mirex

R.T.: 7.882 min
 Delta R.T.: 0.000 min
 Response: 94669517
 Conc: 49.98 ng/ml



#22 Mirex

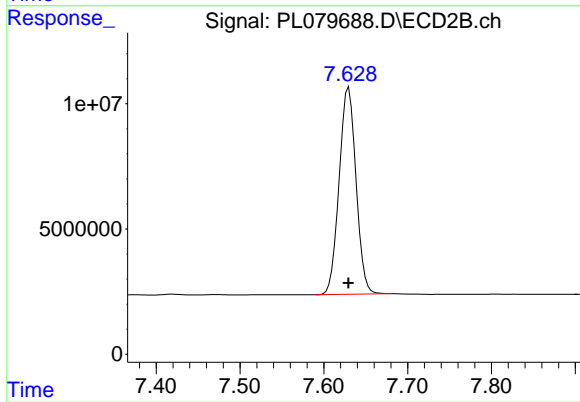
R.T.: 6.725 min
 Delta R.T.: 0.000 min
 Response: 117388374
 Conc: 49.63 ng/ml



#28 Decachlorobiphenyl

R.T.: 8.765 min
Delta R.T.: 0.000 min
Response: 96731952
Conc: 49.81 ng/ml

Instrument :
ECD_L
ClientSampleId :
PSTDCCC050



#28 Decachlorobiphenyl

R.T.: 7.630 min
Delta R.T.: 0.000 min
Response: 115833569
Conc: 49.31 ng/ml