

Data Path : Z:\pestpcbsrv\HPCHEM1\ECD\_L\Data\PL121320\  
 Data File : PL063536.D  
 Signal(s) : Signal #1: ECD1A.ch Signal #2: ECD2B.ch  
 Acq On : 12 Dec 2020 12:34  
 Operator : DD\AJ  
 Sample : L5015-02  
 Misc :  
 ALS Vial : 14 Sample Multiplier: 1

Instrument :  
 ECD\_L  
 ClientSampleId :  
 TR-05-121020

Integration File signal 1: autoint1.e  
 Integration File signal 2: autoint2.e  
 Quant Time: Dec 14 04:27:36 2020  
 Quant Method : Z:\pestpcbsrv\HPCHEM1\ECD\_L\methods\PL121020.M  
 Quant Title : GC Extractables  
 QLast Update : Thu Dec 10 15:57:40 2020  
 Response via : Initial Calibration  
 Integrator: ChemStation

Volume Inj. : 1 µl  
 Signal #1 Phase : ZB-MR2 Signal #2 Phase: ZB-MR1  
 Signal #1 Info : 30M x 0.32mm x0.2 Signal #2 Info : 30M x 0.32mm x0.5µm

Compound	RT#1	RT#2	Resp#1	Resp#2	ng/ml	ng/ml
-----						
System Monitoring Compounds						
1) SA Tetrachlo...	3.409	3.949	25135150	43225119	14.771	13.792
28) SA Decachlor...	8.124	8.989	26312077	36321443	13.066	14.423
Target Compounds						
5) MB Aldrin	0.000	5.451f	0	6838732	N.D.	1.768 #
7) B delta-BHC	0.000	5.004	0	4189165	N.D.	1.035 #
8) B Heptachlo...	0.000	5.829f	0	3519215	N.D.	0.972 #
12) B 4,4'-DDE	5.548	6.275	6615536	14563169	3.895	4.158
17) MA 4,4'-DDT	6.298	7.065	2582120	6306238	1.882	2.466 #
23) Chlordane-1	0.000	4.911f	0	346771	N.D.	3.022 #
24) Chlordane-2	0.000	5.401	0	24074112	N.D.	190.755 #
-----						

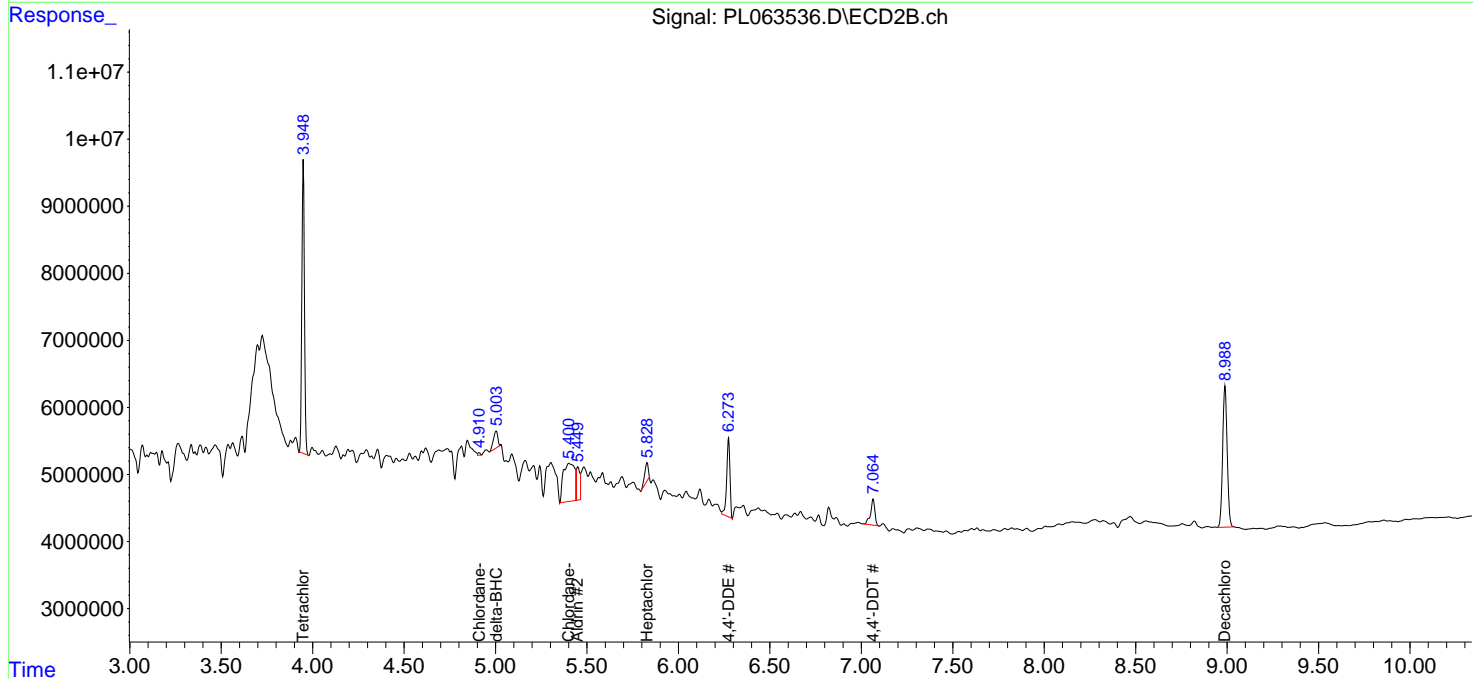
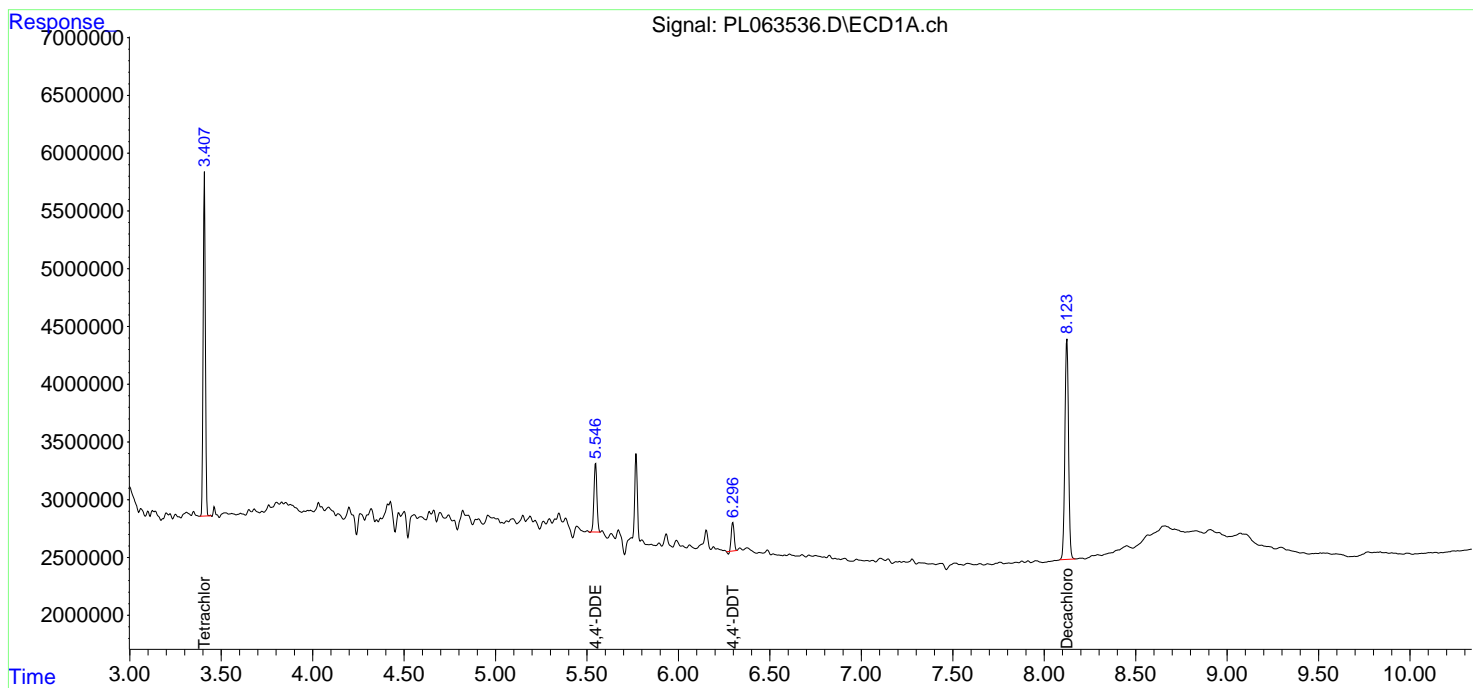
(f)=RT Delta > 1/2 Window (#)=Amounts differ by > 25% (m)=manual int.

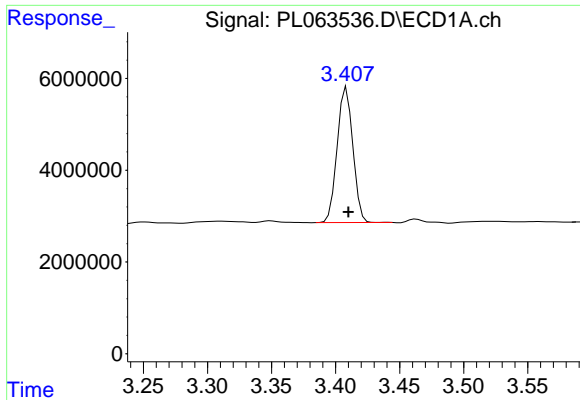
Data Path : Z:\pestpcbsrv\HPCHEM1\ECD\_L\Data\PL121320\  
 Data File : PL063536.D  
 Signal(s) : Signal #1: ECD1A.ch Signal #2: ECD2B.ch  
 Acq On : 12 Dec 2020 12:34  
 Operator : DD\AJ  
 Sample : L5015-02  
 Misc :  
 ALS Vial : 14 Sample Multiplier: 1

Instrument :  
 ECD\_L  
 ClientSampleId :  
 TR-05-121020

Integration File signal 1: autoint1.e  
 Integration File signal 2: autoint2.e  
 Quant Time: Dec 14 04:27:36 2020  
 Quant Method : Z:\pestpcbsrv\HPCHEM1\ECD\_L\methods\PL121020.M  
 Quant Title : GC Extractables  
 QLast Update : Thu Dec 10 15:57:40 2020  
 Response via : Initial Calibration  
 Integrator: ChemStation

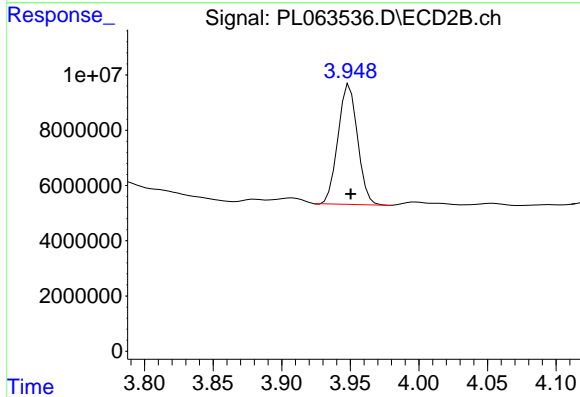
Volume Inj. : 1 µl  
 Signal #1 Phase : ZB-MR2 Signal #2 Phase: ZB-MR1  
 Signal #1 Info : 30M x 0.32mm x0.2 Signal #2 Info : 30M x 0.32mm x0.5µm



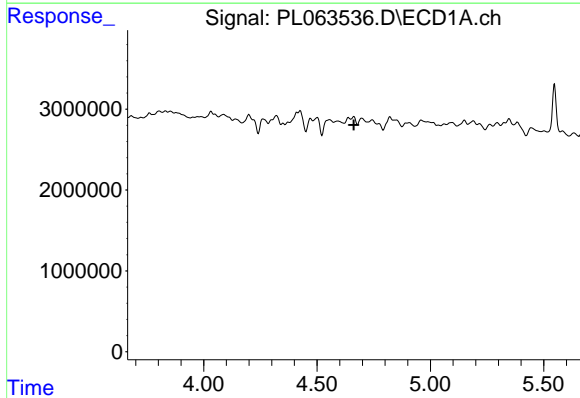


#1 Tetrachloro-m-xylene  
 R.T.: 3.409 min  
 Delta R.T.: -0.001 min  
 Response: 25135150  
 Conc: 14.77 ng/ml

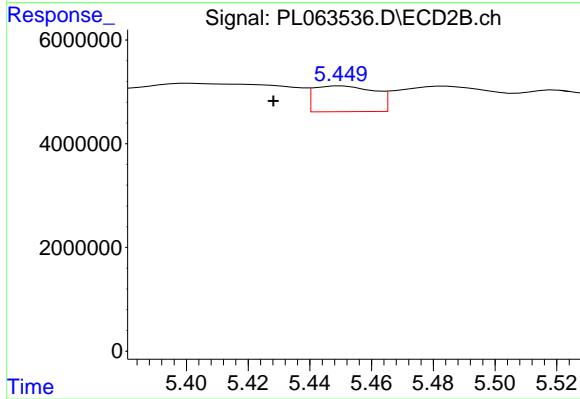
Instrument :  
 ECD\_L  
 ClientSampleId :  
 TR-05-121020



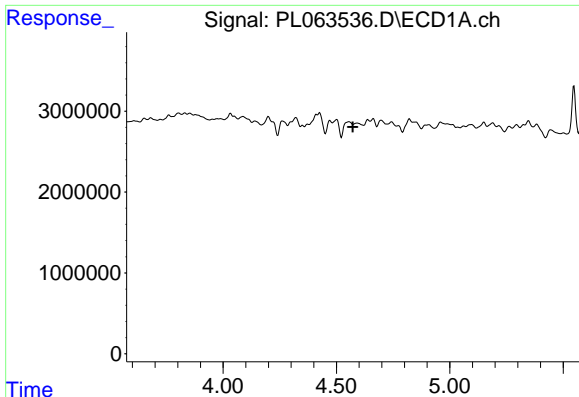
#1 Tetrachloro-m-xylene  
 R.T.: 3.949 min  
 Delta R.T.: 0.000 min  
 Response: 43225119  
 Conc: 13.79 ng/ml



#5 Aldrin  
 R.T.: 0.000 min  
 Exp R.T. : 4.663 min  
 Response: 0  
 Conc: N.D.



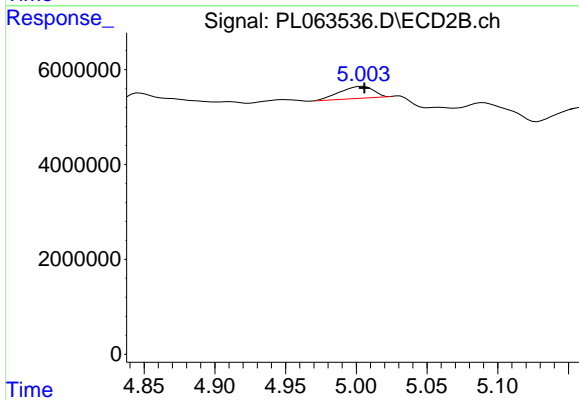
#5 Aldrin  
 R.T.: 5.451 min  
 Delta R.T.: 0.022 min  
 Response: 6838732  
 Conc: 1.77 ng/ml



#7 delta-BHC

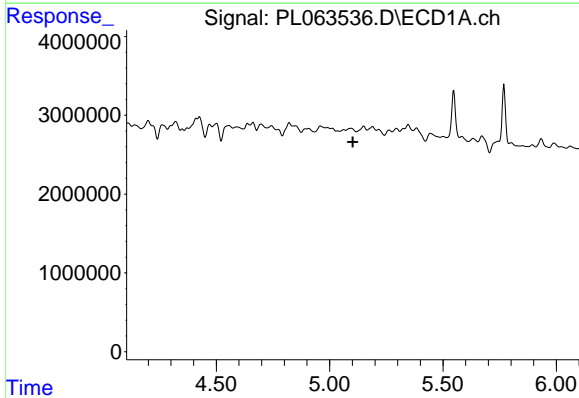
R.T.: 0.000 min  
 Exp R.T. : 4.572 min  
 Response: 0  
 Conc: N.D.

Instrument :  
 ECD\_L  
 ClientSampleId :  
 TR-05-121020



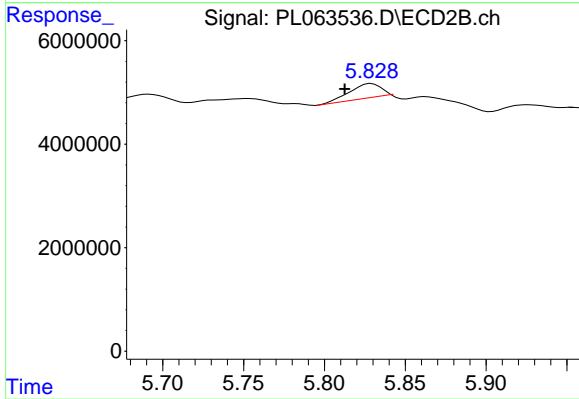
#7 delta-BHC

R.T.: 5.004 min  
 Delta R.T.: -0.001 min  
 Response: 4189165  
 Conc: 1.04 ng/ml



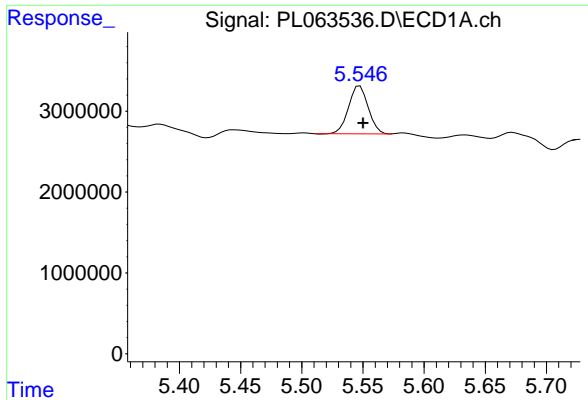
#8 Heptachlor epoxide

R.T.: 0.000 min  
 Exp R.T. : 5.102 min  
 Response: 0  
 Conc: N.D.



#8 Heptachlor epoxide

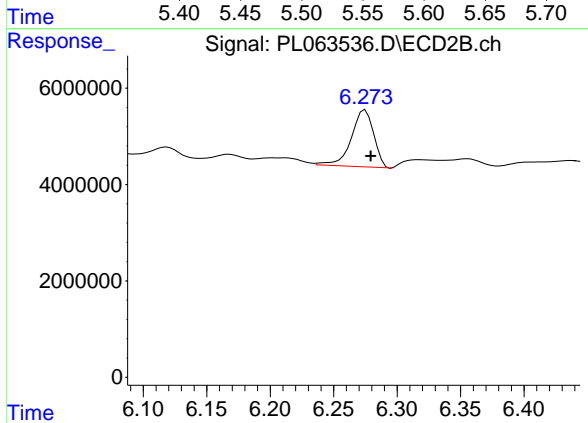
R.T.: 5.829 min  
 Delta R.T.: 0.016 min  
 Response: 3519215  
 Conc: 0.97 ng/ml



#12 4,4'-DDE

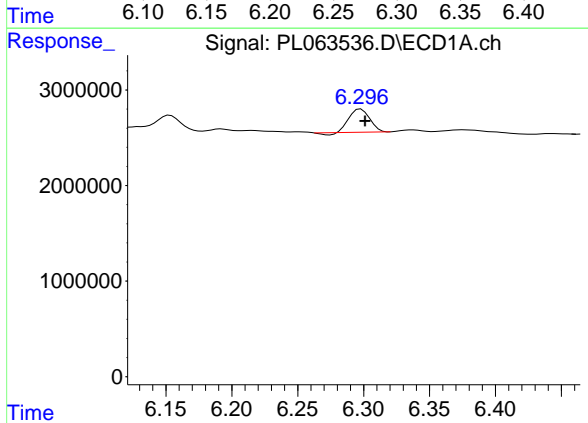
R.T.: 5.548 min  
 Delta R.T.: -0.003 min  
 Response: 6615536  
 Conc: 3.90 ng/ml

Instrument :  
 ECD\_L  
 ClientSampleId :  
 TR-05-121020



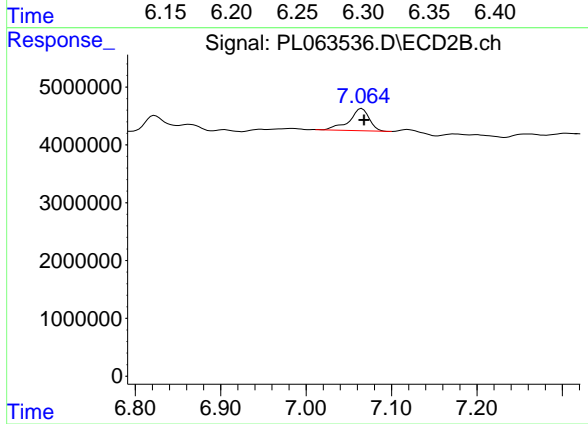
#12 4,4'-DDE

R.T.: 6.275 min  
 Delta R.T.: -0.004 min  
 Response: 14563169  
 Conc: 4.16 ng/ml



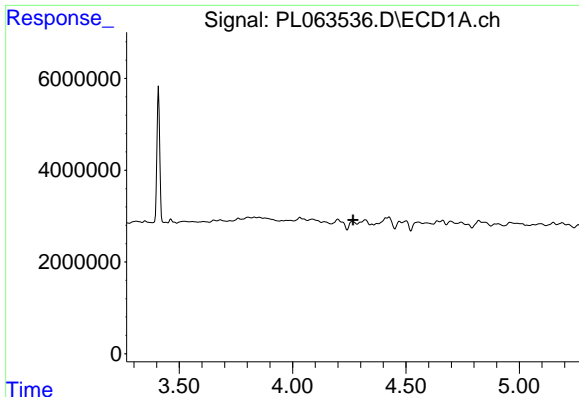
#17 4,4'-DDT

R.T.: 6.298 min  
 Delta R.T.: -0.003 min  
 Response: 2582120  
 Conc: 1.88 ng/ml



#17 4,4'-DDT

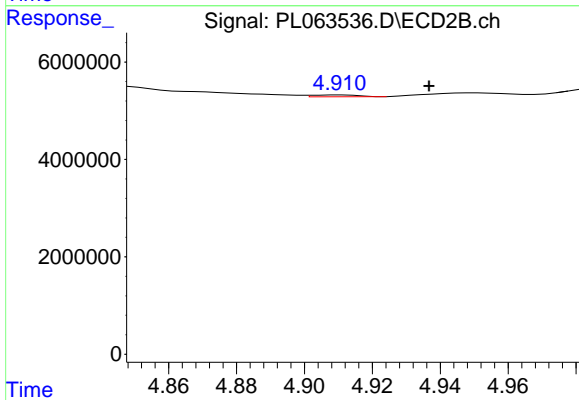
R.T.: 7.065 min  
 Delta R.T.: -0.002 min  
 Response: 6306238  
 Conc: 2.47 ng/ml



#23 Chlordane-1

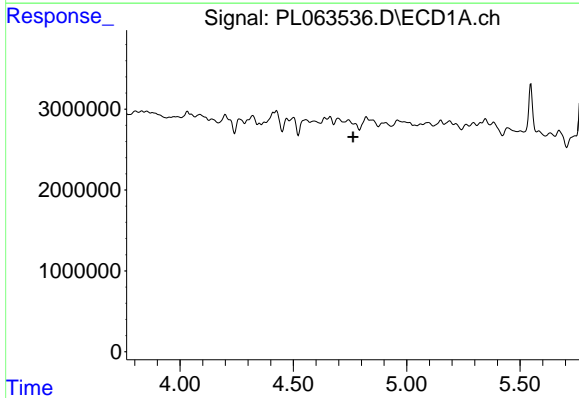
R.T.: 0.000 min  
 Exp R.T. : 4.267 min  
 Response: 0  
 Conc: N.D.

Instrument :  
 ECD\_L  
 ClientSampleId :  
 TR-05-121020



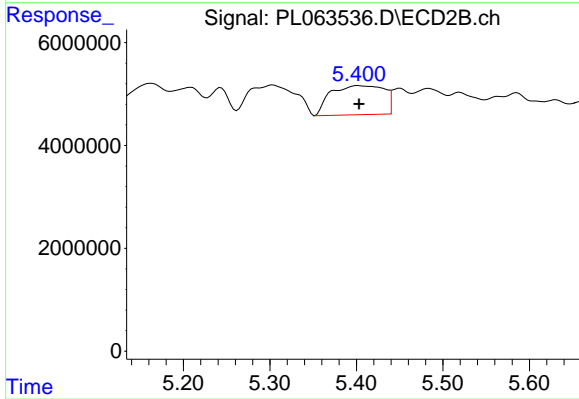
#23 Chlordane-1

R.T.: 4.911 min  
 Delta R.T.: -0.026 min  
 Response: 346771  
 Conc: 3.02 ng/ml



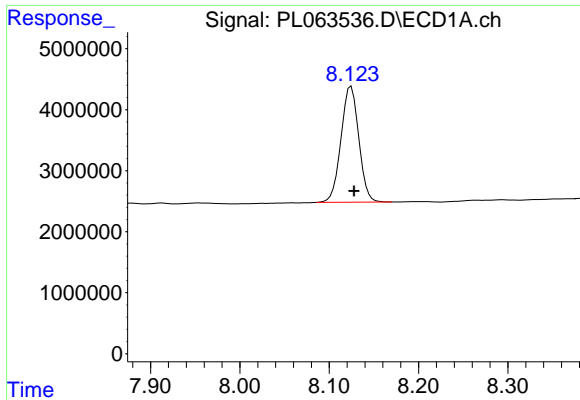
#24 Chlordane-2

R.T.: 0.000 min  
 Exp R.T. : 4.763 min  
 Response: 0  
 Conc: N.D.



#24 Chlordane-2

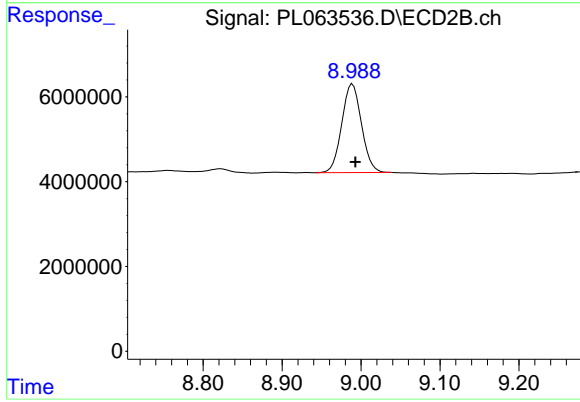
R.T.: 5.401 min  
 Delta R.T.: -0.002 min  
 Response: 24074112  
 Conc: 190.75 ng/ml



#28 Decachlorobiphenyl

R.T.: 8.124 min  
Delta R.T.: -0.004 min  
Response: 26312077  
Conc: 13.07 ng/ml

Instrument :  
ECD\_L  
ClientSampleId :  
TR-05-121020



#28 Decachlorobiphenyl

R.T.: 8.989 min  
Delta R.T.: -0.004 min  
Response: 36321443  
Conc: 14.42 ng/ml