

Data Path : Z:\pestpcbsrv\HPCHEM1\ECD_L\Data\PL121320\
 Data File : PL063545.D
 Signal(s) : Signal #1: ECD1A.ch Signal #2: ECD2B.ch
 Acq On : 12 Dec 2020 14:43
 Operator : DD\AJ
 Sample : L5045-02
 Misc :
 ALS Vial : 23 Sample Multiplier: 1

Instrument :
 ECD_L
 ClientSampleId :

Integration File signal 1: autoint1.e
 Integration File signal 2: autoint2.e
 Quant Time: Dec 14 04:29:40 2020
 Quant Method : Z:\pestpcbsrv\HPCHEM1\ECD_L\methods\PL121020.M
 Quant Title : GC Extractables
 QLast Update : Thu Dec 10 15:57:40 2020
 Response via : Initial Calibration
 Integrator: ChemStation

Volume Inj. : 1 µl
 Signal #1 Phase : ZB-MR2 Signal #2 Phase: ZB-MR1
 Signal #1 Info : 30M x 0.32mm x0.2 Signal #2 Info : 30M x 0.32mm x0.5µm

Compound	RT#1	RT#2	Resp#1	Resp#2	ng/ml	ng/ml

System Monitoring Compounds						
1) SA Tetrachlo...	3.409	3.950	30724893	55955080	18.055	17.853
28) SA Decachlor...	8.124	8.991	19081181	21113481	9.475	8.384
Target Compounds						
2) A alpha-BHC	0.000	4.362f	0	4387431	N.D.	0.927 #
3) MA gamma-BHC...	4.125	0.000	4153093	0	1.822	N.D. #
7) B delta-BHC	0.000	5.003	0	9365766	N.D.	2.314 #
8) B Heptachlo...	0.000	5.826	0	4497216	N.D.	1.242 #
9) A Endosulfan I	5.458f	0.000	13596450	0	7.790	N.D. #
10) B gamma-Chl...	5.349f	6.035	7279767	13060048	3.914	3.680
11) B alpha-Chl...	0.000	6.121	0	14164324	N.D.	3.997 #
13) MA Dieldrin	5.678	6.454f	10213142	2872562	5.610	0.836 #
15) B Endosulfa...	0.000	6.842	0	2312614	N.D.	0.726 #
16) A 4,4'-DDD	0.000	6.762	0	7794006	N.D.	2.876 #
23) Chlordane-1	4.274	0.000	1542206	0	28.211	N.D. #
25) Chlordane-3	5.349f	6.035	7279767	13060048	42.017	28.343 #
26) Chlordane-4	0.000	6.121	0	14164324	N.D.	25.835 #

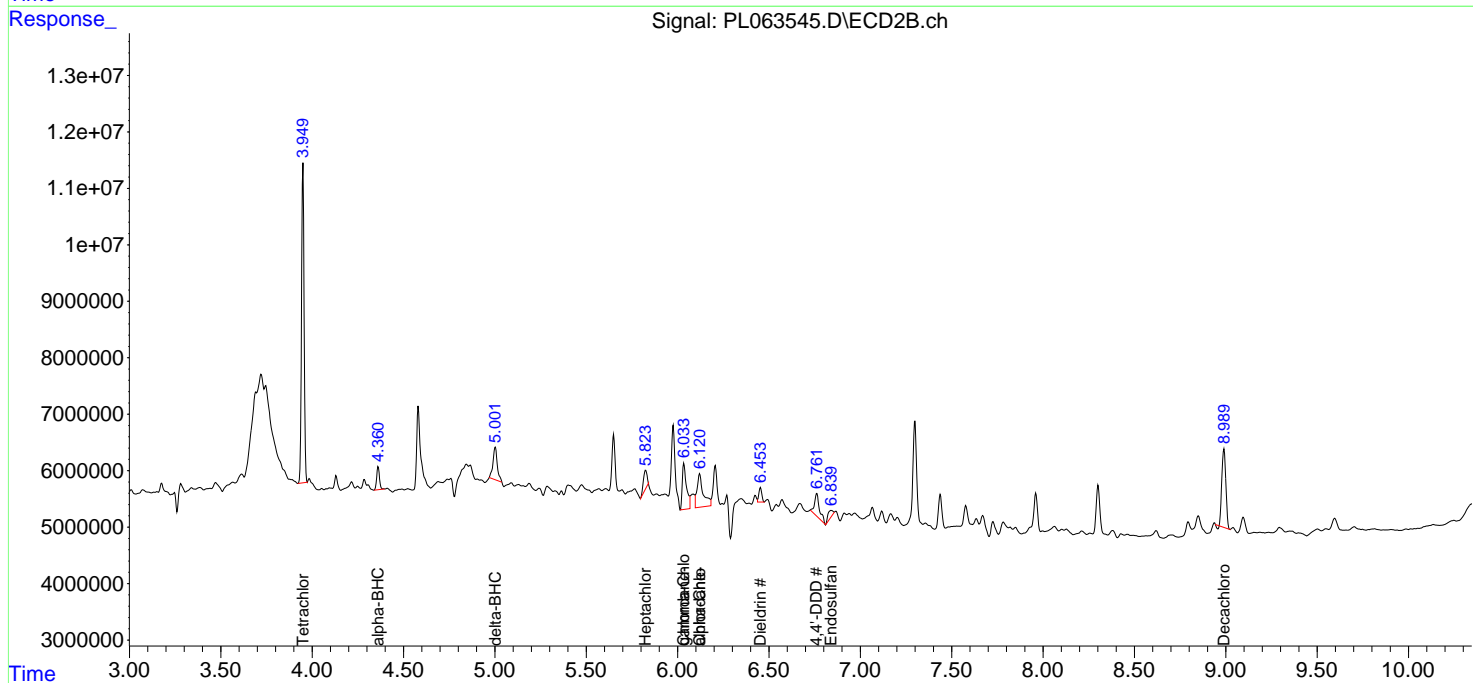
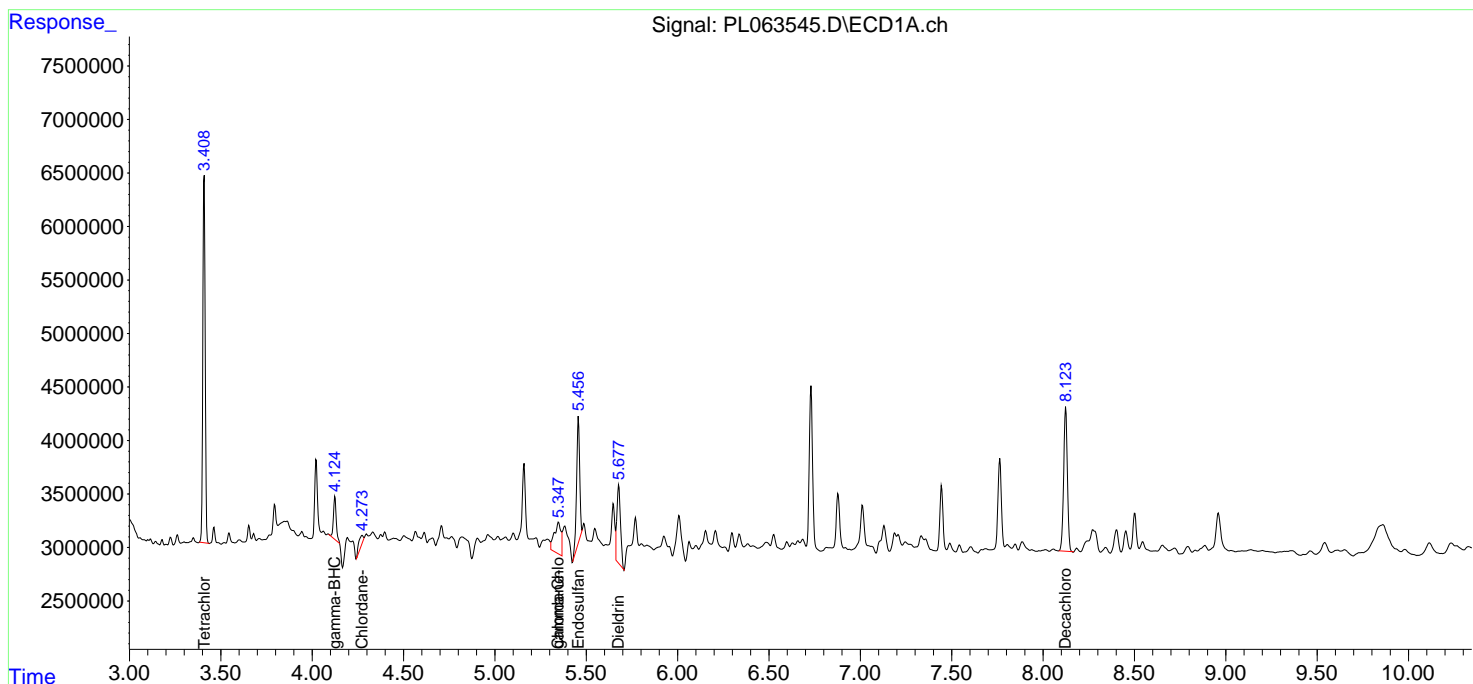
(f)=RT Delta > 1/2 Window (#)=Amounts differ by > 25% (m)=manual int.

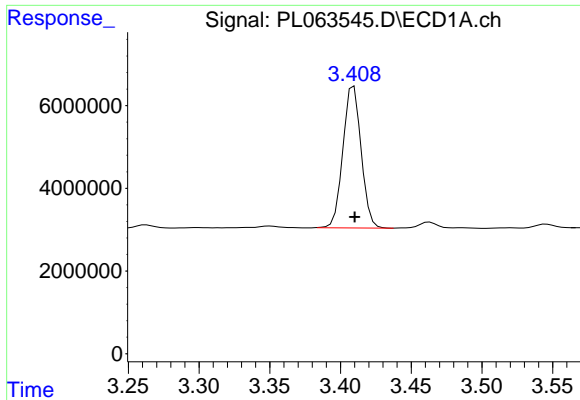
Data Path : Z:\pestpcbsrv\HPCHEM1\ECD_L\Data\PL121320\
 Data File : PL063545.D
 Signal(s) : Signal #1: ECD1A.ch Signal #2: ECD2B.ch
 Acq On : 12 Dec 2020 14:43
 Operator : DD\AJ
 Sample : L5045-02
 Misc :
 ALS Vial : 23 Sample Multiplier: 1

Instrument :
 ECD_L
 ClientSampled :

Integration File signal 1: autoint1.e
 Integration File signal 2: autoint2.e
 Quant Time: Dec 14 04:29:40 2020
 Quant Method : Z:\pestpcbsrv\HPCHEM1\ECD_L\methods\PL121020.M
 Quant Title : GC Extractables
 QLast Update : Thu Dec 10 15:57:40 2020
 Response via : Initial Calibration
 Integrator: ChemStation

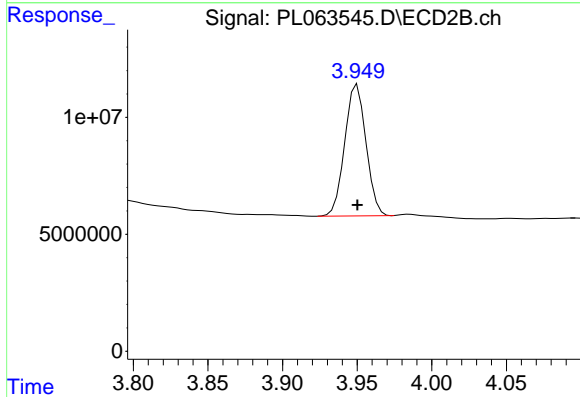
Volume Inj. : 1 µl
 Signal #1 Phase : ZB-MR2 Signal #2 Phase: ZB-MR1
 Signal #1 Info : 30M x 0.32mm x0.2 Signal #2 Info : 30M x 0.32mm x0.5µm



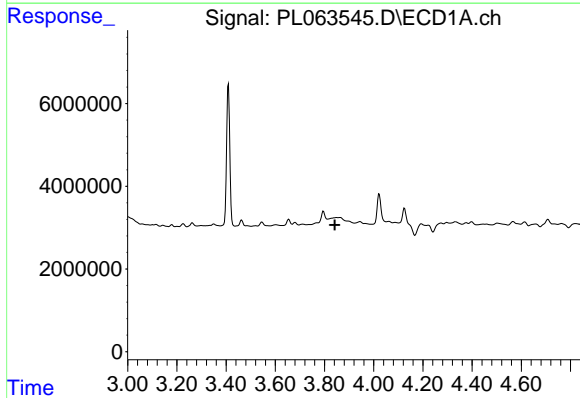


#1 Tetrachloro-m-xylene
 R.T.: 3.409 min
 Delta R.T.: 0.000 min
 Response: 30724893
 Conc: 18.06 ng/ml

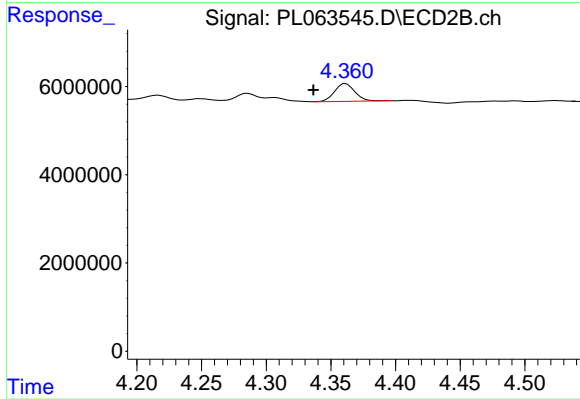
Instrument :
 ECD_L
 ClientSampleId :



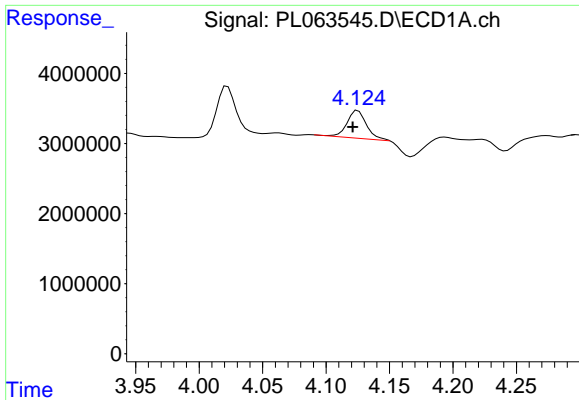
#1 Tetrachloro-m-xylene
 R.T.: 3.950 min
 Delta R.T.: 0.000 min
 Response: 55955080
 Conc: 17.85 ng/ml



#2 alpha-BHC
 R.T.: 0.000 min
 Exp R.T. : 3.842 min
 Response: 0
 Conc: N.D.

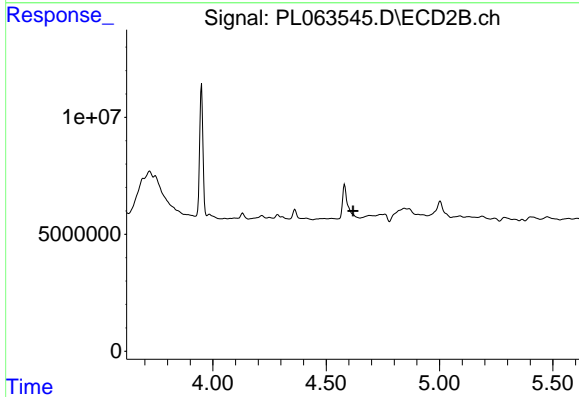


#2 alpha-BHC
 R.T.: 4.362 min
 Delta R.T.: 0.025 min
 Response: 4387431
 Conc: 0.93 ng/ml

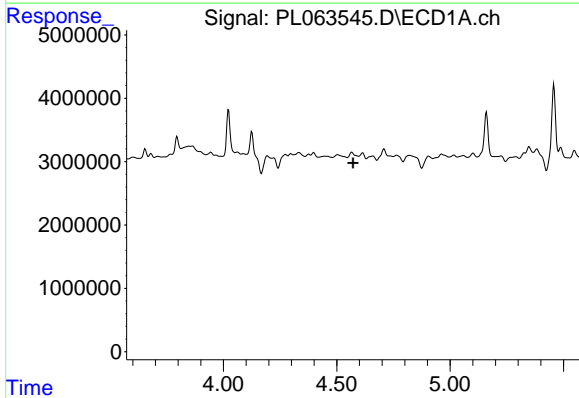


#3 gamma-BHC (Lindane)
 R.T.: 4.125 min
 Delta R.T.: 0.004 min
 Response: 4153093
 Conc: 1.82 ng/ml

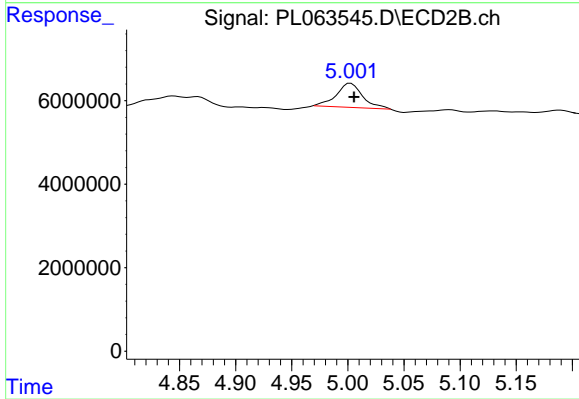
Instrument :
 ECD_L
 ClientSampleId :



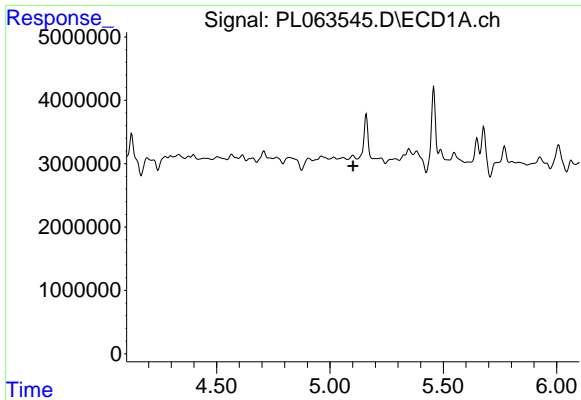
#3 gamma-BHC (Lindane)
 R.T.: 0.000 min
 Exp R.T. : 4.619 min
 Response: 0
 Conc: N.D.



#7 delta-BHC
 R.T.: 0.000 min
 Exp R.T. : 4.572 min
 Response: 0
 Conc: N.D.

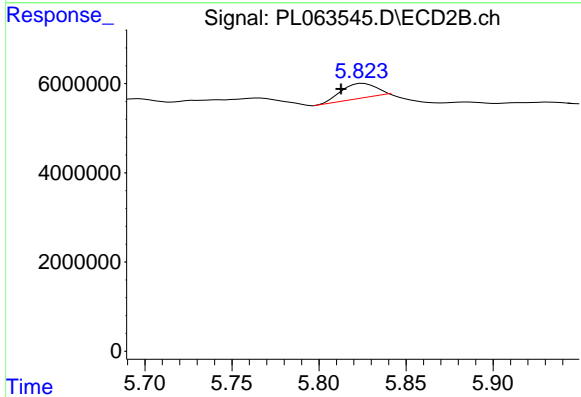


#7 delta-BHC
 R.T.: 5.003 min
 Delta R.T.: -0.003 min
 Response: 9365766
 Conc: 2.31 ng/ml

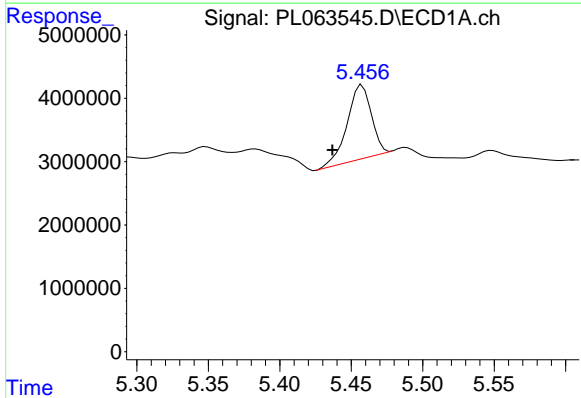


#8 Heptachlor epoxide
 R.T.: 0.000 min
 Exp R.T.: 5.102 min
 Response: 0
 Conc: N.D.

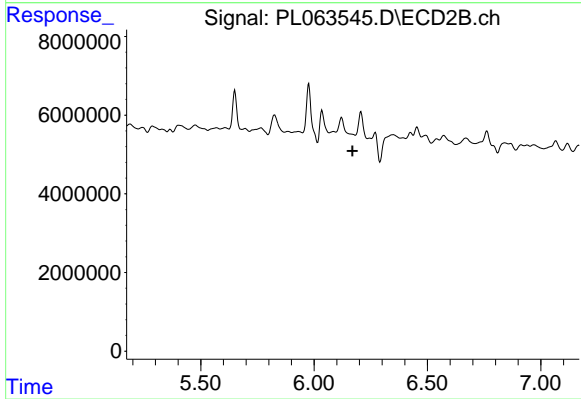
Instrument :
 ECD_L
 ClientSampled :



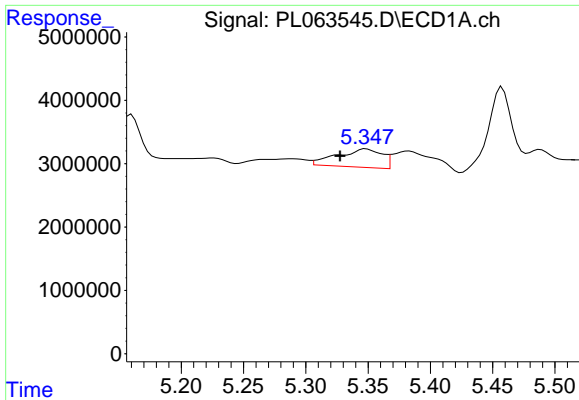
#8 Heptachlor epoxide
 R.T.: 5.826 min
 Delta R.T.: 0.013 min
 Response: 4497216
 Conc: 1.24 ng/ml



#9 Endosulfan I
 R.T.: 5.458 min
 Delta R.T.: 0.021 min
 Response: 13596450
 Conc: 7.79 ng/ml

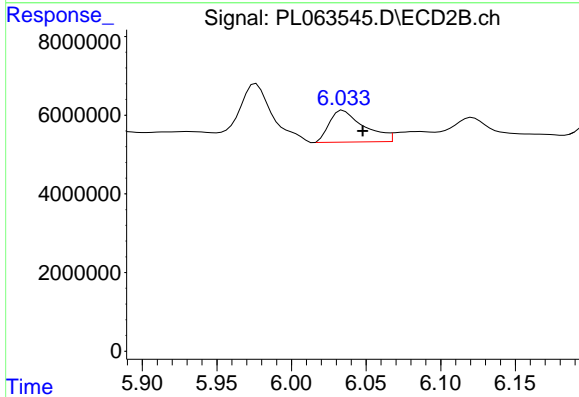


#9 Endosulfan I
 R.T.: 0.000 min
 Exp R.T.: 6.170 min
 Response: 0
 Conc: N.D.

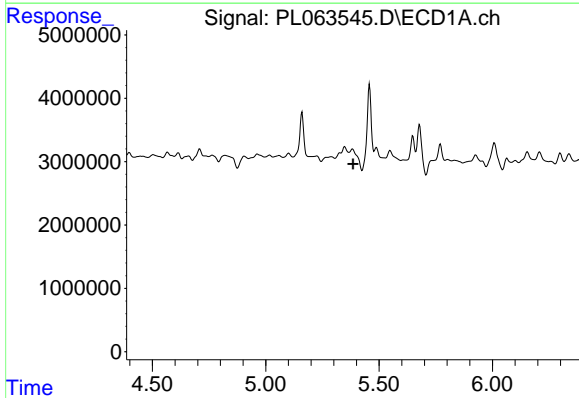


#10 gamma-Chlordane
 R.T.: 5.349 min
 Delta R.T.: 0.021 min
 Response: 7279767
 Conc: 3.91 ng/ml

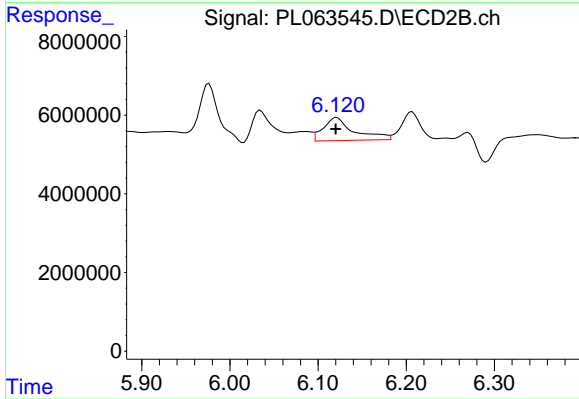
Instrument :
 ECD_L
 ClientSampled :



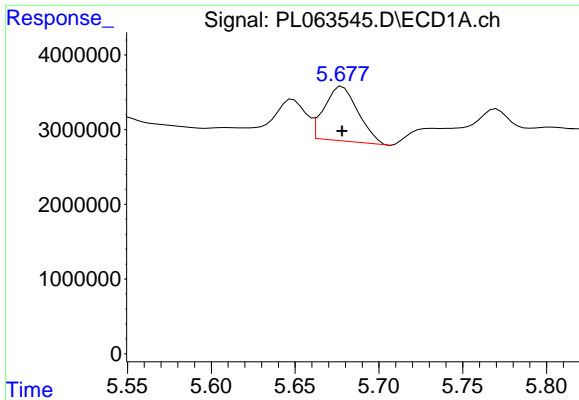
#10 gamma-Chlordane
 R.T.: 6.035 min
 Delta R.T.: -0.013 min
 Response: 13060048
 Conc: 3.68 ng/ml



#11 alpha-Chlordane
 R.T.: 0.000 min
 Exp R.T. : 5.385 min
 Response: 0
 Conc: N.D.

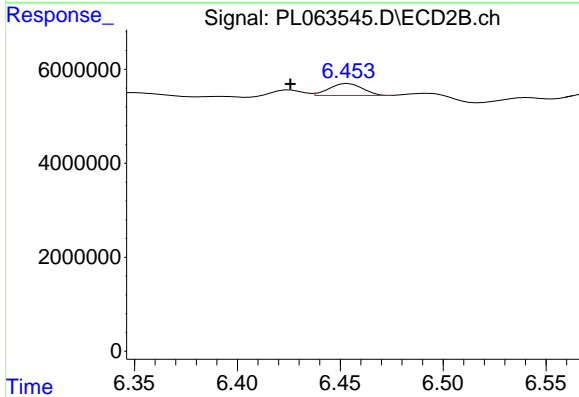


#11 alpha-Chlordane
 R.T.: 6.121 min
 Delta R.T.: 0.001 min
 Response: 14164324
 Conc: 4.00 ng/ml

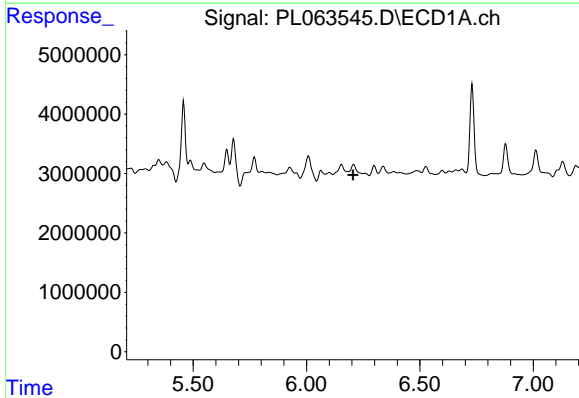


#13 Dieldrin
 R.T.: 5.678 min
 Delta R.T.: 0.000 min
 Response: 10213142
 Conc: 5.61 ng/ml

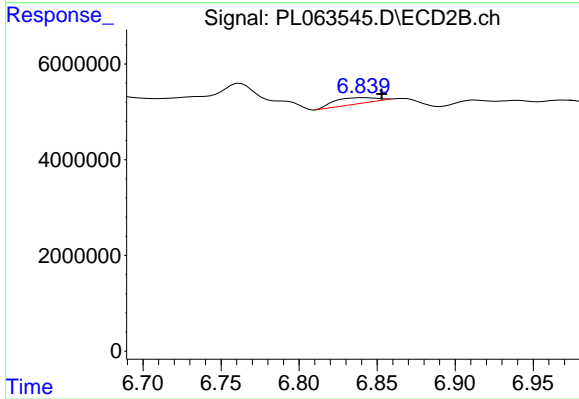
Instrument :
 ECD_L
 ClientSampled :



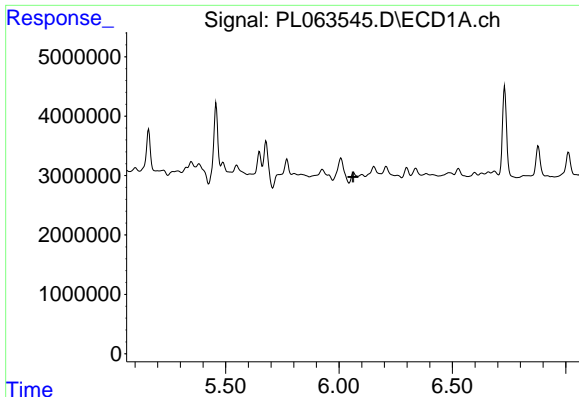
#13 Dieldrin
 R.T.: 6.454 min
 Delta R.T.: 0.028 min
 Response: 2872562
 Conc: 0.84 ng/ml



#15 Endosulfan II
 R.T.: 0.000 min
 Exp R.T. : 6.205 min
 Response: 0
 Conc: N.D.



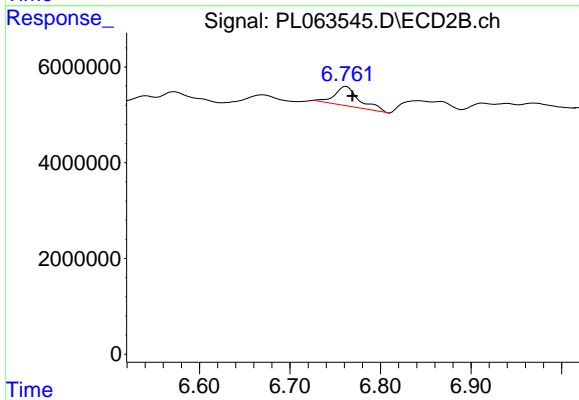
#15 Endosulfan II
 R.T.: 6.842 min
 Delta R.T.: -0.011 min
 Response: 2312614
 Conc: 0.73 ng/ml



#16 4,4'-DDD

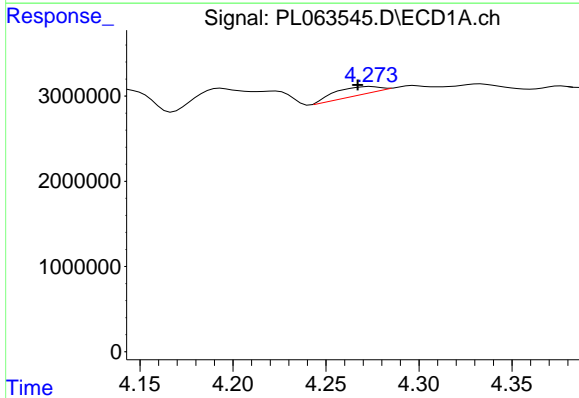
R.T.: 0.000 min
 Exp R.T.: 6.062 min
 Response: 0
 Conc: N.D.

Instrument :
 ECD_L
 ClientSampleId :



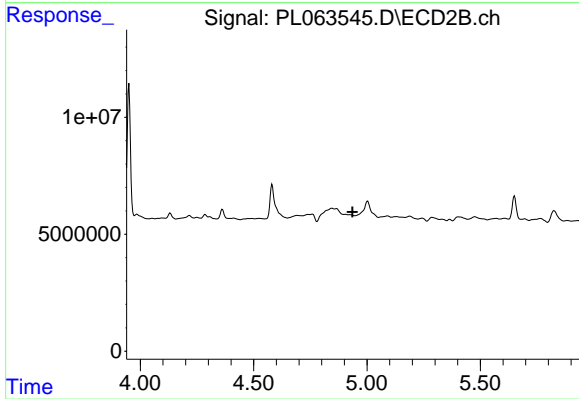
#16 4,4'-DDD

R.T.: 6.762 min
 Delta R.T.: -0.007 min
 Response: 7794006
 Conc: 2.88 ng/ml



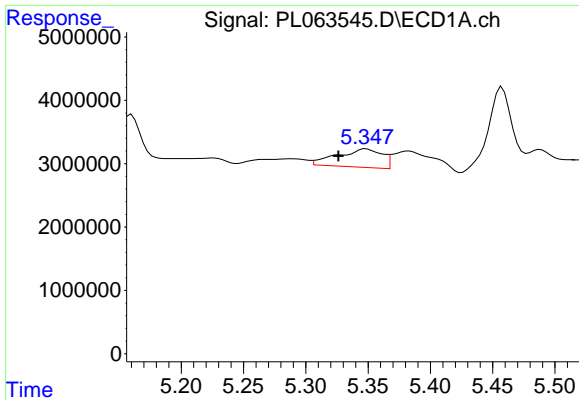
#23 Chlordane-1

R.T.: 4.274 min
 Delta R.T.: 0.007 min
 Response: 1542206
 Conc: 28.21 ng/ml



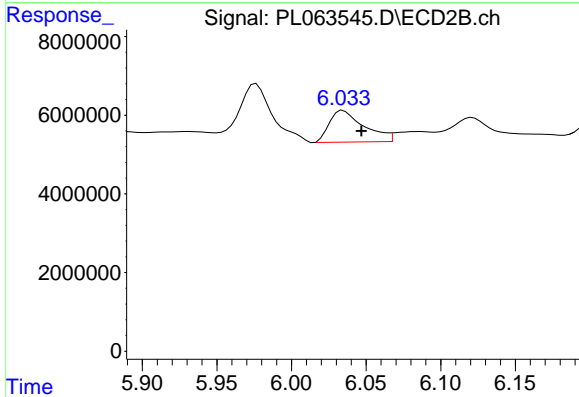
#23 Chlordane-1

R.T.: 0.000 min
 Exp R.T.: 4.937 min
 Response: 0
 Conc: N.D.

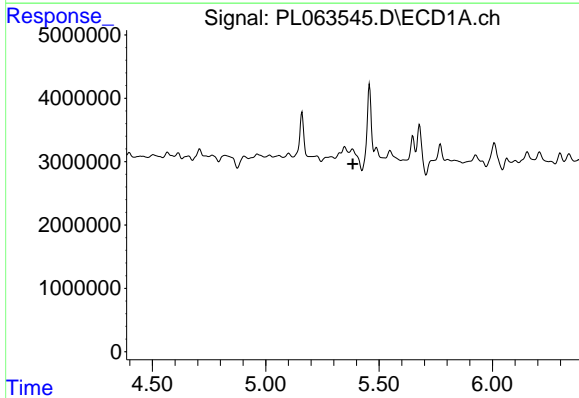


#25 Chlordane-3
 R.T.: 5.349 min
 Delta R.T.: 0.022 min
 Response: 7279767
 Conc: 42.02 ng/ml

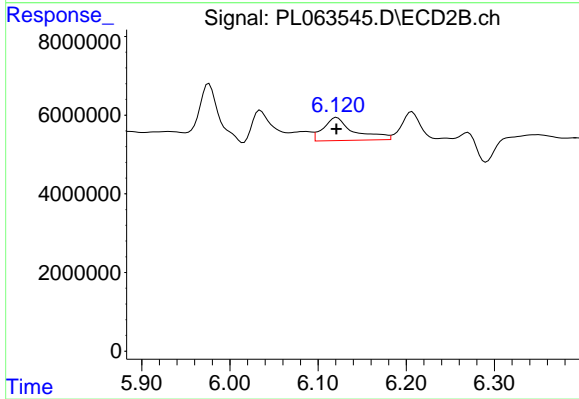
Instrument :
 ECD_L
 ClientSampled :



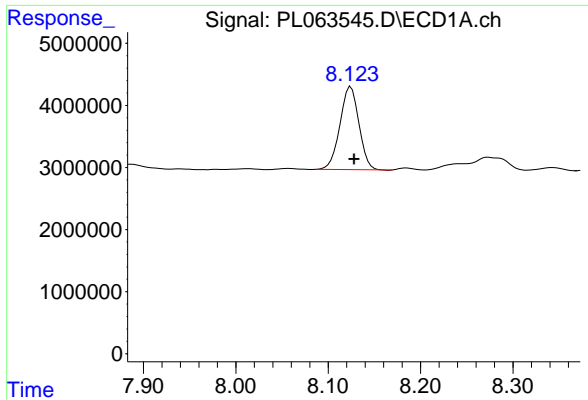
#25 Chlordane-3
 R.T.: 6.035 min
 Delta R.T.: -0.012 min
 Response: 13060048
 Conc: 28.34 ng/ml



#26 Chlordane-4
 R.T.: 0.000 min
 Exp R.T. : 5.384 min
 Response: 0
 Conc: N.D.

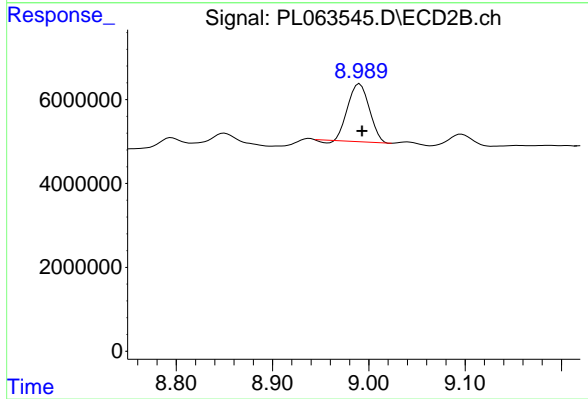


#26 Chlordane-4
 R.T.: 6.121 min
 Delta R.T.: 0.000 min
 Response: 14164324
 Conc: 25.83 ng/ml



#28 Decachlorobiphenyl
R.T.: 8.124 min
Delta R.T.: -0.004 min
Response: 19081181
Conc: 9.47 ng/ml

Instrument :
ECD_L
ClientSampleId :



#28 Decachlorobiphenyl
R.T.: 8.991 min
Delta R.T.: -0.002 min
Response: 21113481
Conc: 8.38 ng/ml