

Data Path : Z:\pestpcbsrv\HPCHEM1\ECD_L\Data\PL112322\
 Data File : PL079691.D
 Signal(s) : Signal #1: ECD1A.ch Signal #2: ECD2B.ch
 Acq On : 13 Dec 2022 09:15
 Operator : AR\AJ
 Sample : PEM
 Misc :
 ALS Vial : 3 Sample Multiplier: 1

Instrument :
 ECD_L
 ClientSampleId :
 PEM

Integration File signal 1: autoint1.e
 Integration File signal 2: autoint2.e
 Quant Time: Dec 13 20:41:36 2022
 Quant Method : Z:\pestpcbsrv\HPCHEM1\ECD_L\methods\PL112322.M
 Quant Title : GC Extractables
 QLast Update : Thu Nov 24 00:09:49 2022
 Response via : Initial Calibration
 Integrator: ChemStation

Volume Inj. : 1 µl
 Signal #1 Phase : ZB-MR2 Signal #2 Phase: ZB-MR1
 Signal #1 Info : 30M x 0.32mm x0.2 Signal #2 Info : 30M x 0.32mm x0.5µm

Compound	RT#1	RT#2	Resp#1	Resp#2	ng/ml	ng/ml

System Monitoring Compounds						
1) SA Tetrachlo...	3.319	2.566	50475243	59055465	22.344	21.695
28) SA Decachlor...	8.768	7.632	43171927	49927582	22.230	21.252
Target Compounds						
2) A alpha-BHC	3.779	3.052	34903336	45890843	10.150	10.643
3) MA gamma-BHC...	4.112	3.373	34061114	41188587	10.510	10.578
6) B beta-BHC	4.328	3.674	16466076	19177638	11.662	12.657
12) B 4,4'-DDE	5.969	4.972	970621	1210162	0.389	0.395
14) MA Endrin	6.347	5.363	116.0E6	142.9E6	47.959	47.241
16) A 4,4'-DDD	6.494	5.523	11339156	15223579	5.715	6.086
17) MA 4,4'-DDT	6.804	5.769	224.6E6	253.2E6	99.000	96.881
18) B Endrin al...	6.709	5.839	4170014	7009160	2.302	3.293 #
20) A Methoxychlor	7.290	6.346	288.2E6	294.4E6	238.888	216.579
21) B Endrin ke...	7.427	6.556	10975061	16539577	4.448	5.370

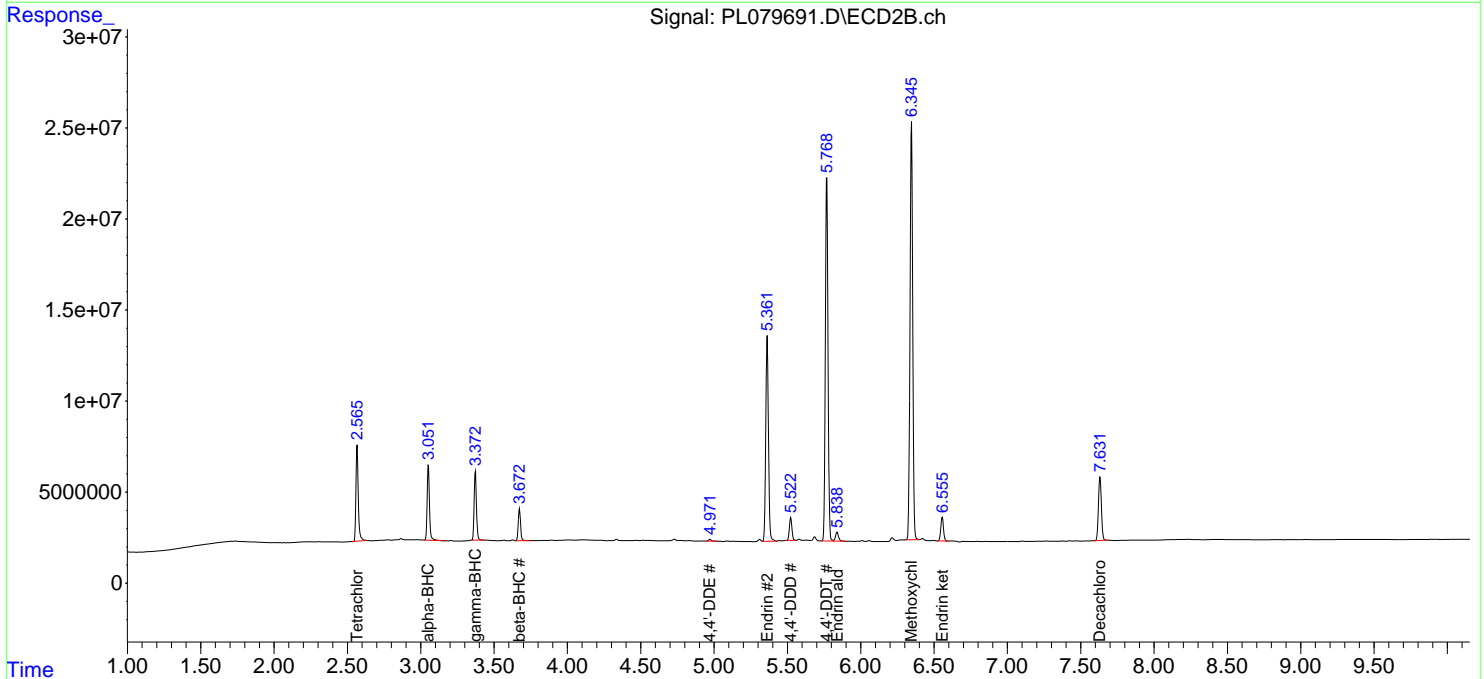
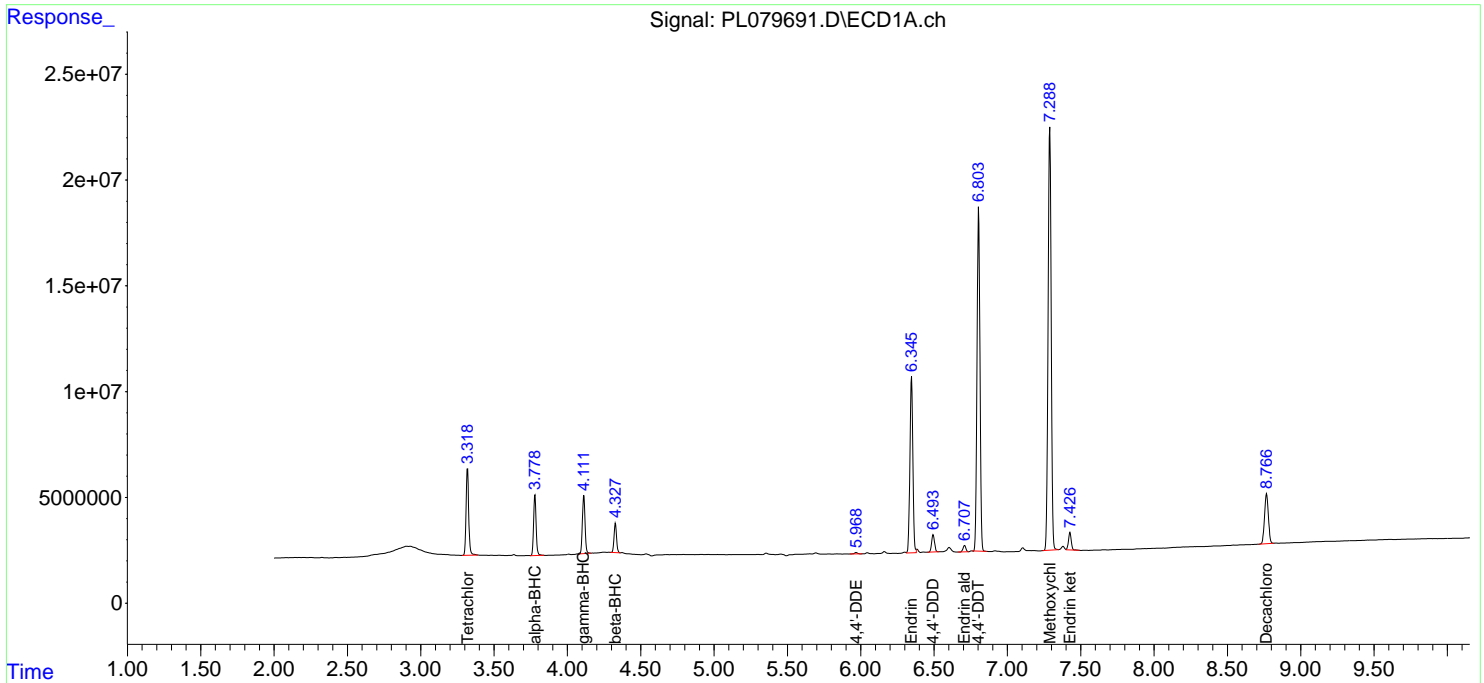
(f)=RT Delta > 1/2 Window (#)=Amounts differ by > 25% (m)=manual int.

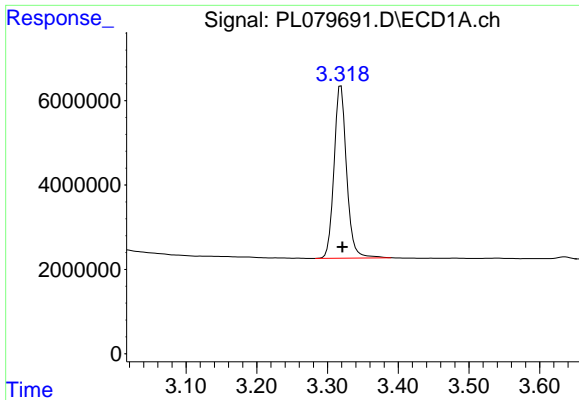
Data Path : Z:\pestpcbsrv\HPCHEM1\ECD_L\Data\PL121322\
 Data File : PL079691.D
 Signal(s) : Signal #1: ECD1A.ch Signal #2: ECD2B.ch
 Acq On : 13 Dec 2022 09:15
 Operator : AR\AJ
 Sample : PEM
 Misc :
 ALS Vial : 3 Sample Multiplier: 1

Instrument :
 ECD_L
 ClientSampleId :
 PEM

Integration File signal 1: autoint1.e
 Integration File signal 2: autoint2.e
 Quant Time: Dec 13 20:41:36 2022
 Quant Method : Z:\pestpcbsrv\HPCHEM1\ECD_L\methods\PL112322.M
 Quant Title : GC Extractables
 QLast Update : Thu Nov 24 00:09:49 2022
 Response via : Initial Calibration
 Integrator: ChemStation

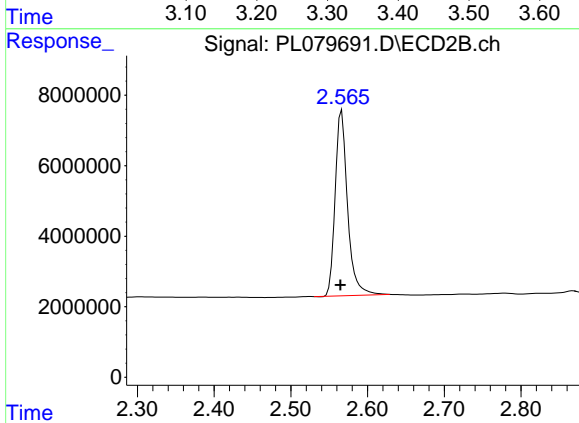
Volume Inj. : 1 µl
 Signal #1 Phase : ZB-MR2 Signal #2 Phase: ZB-MR1
 Signal #1 Info : 30M x 0.32mm x0.2 Signal #2 Info : 30M x 0.32mm x0.5µm



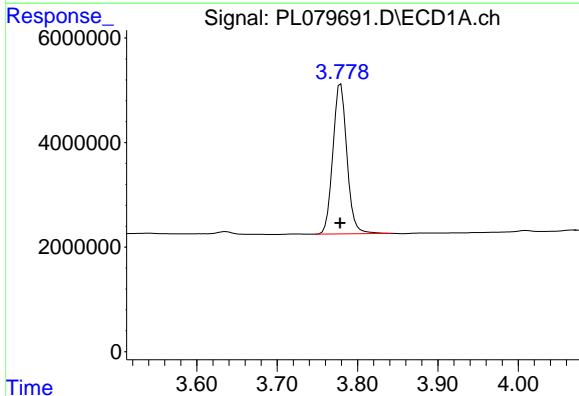


#1 Tetrachloro-m-xylene
 R.T.: 3.319 min
 Delta R.T.: -0.002 min
 Response: 50475243
 Conc: 22.34 ng/ml

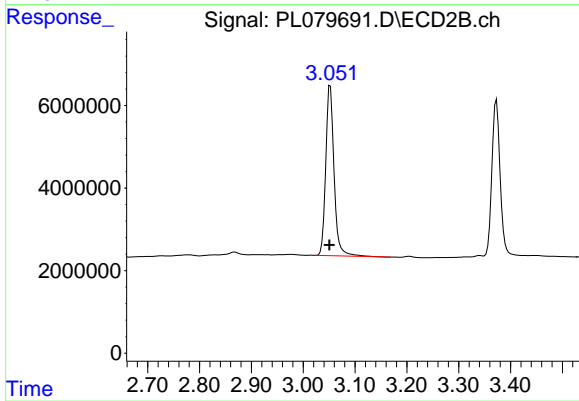
Instrument :
 ECD_L
 ClientSampleId :
 PEM



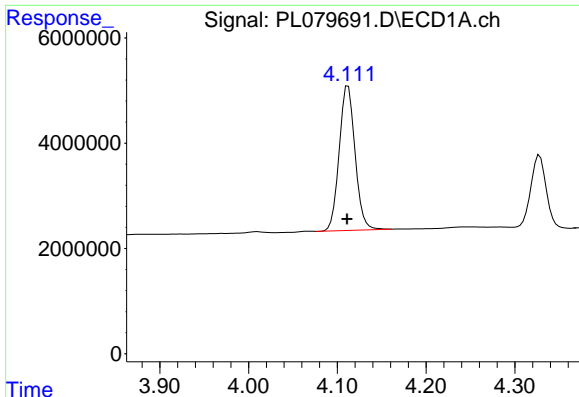
#1 Tetrachloro-m-xylene
 R.T.: 2.566 min
 Delta R.T.: 0.002 min
 Response: 59055465
 Conc: 21.70 ng/ml



#2 alpha-BHC
 R.T.: 3.779 min
 Delta R.T.: 0.001 min
 Response: 34903336
 Conc: 10.15 ng/ml



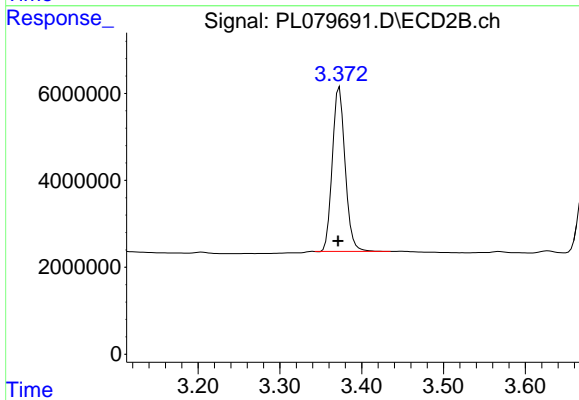
#2 alpha-BHC
 R.T.: 3.052 min
 Delta R.T.: 0.002 min
 Response: 45890843
 Conc: 10.64 ng/ml



#3 gamma-BHC (Lindane)

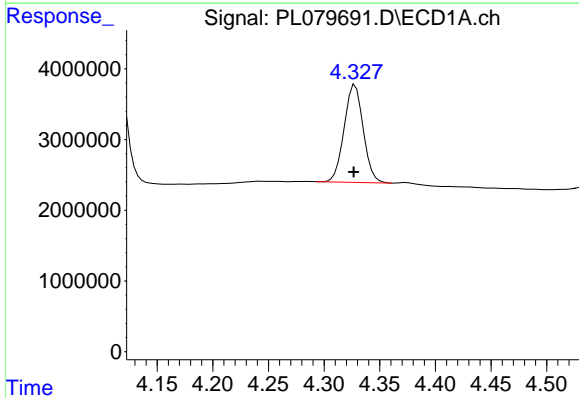
R.T.: 4.112 min
 Delta R.T.: 0.001 min
 Response: 34061114
 Conc: 10.51 ng/ml

Instrument :
 ECD_L
 ClientSampleId :
 PEM



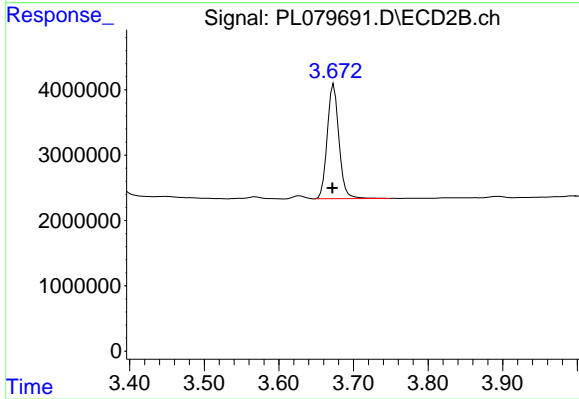
#3 gamma-BHC (Lindane)

R.T.: 3.373 min
 Delta R.T.: 0.002 min
 Response: 41188587
 Conc: 10.58 ng/ml



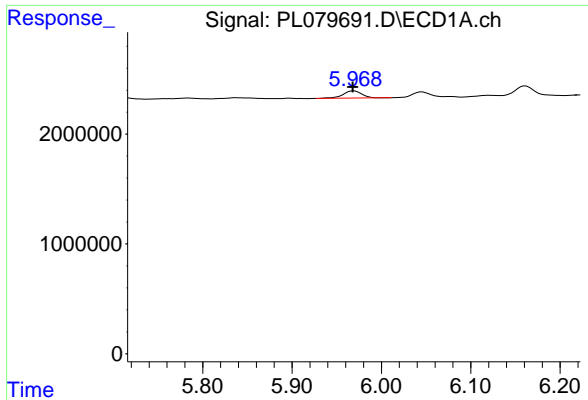
#6 beta-BHC

R.T.: 4.328 min
 Delta R.T.: 0.001 min
 Response: 16466076
 Conc: 11.66 ng/ml



#6 beta-BHC

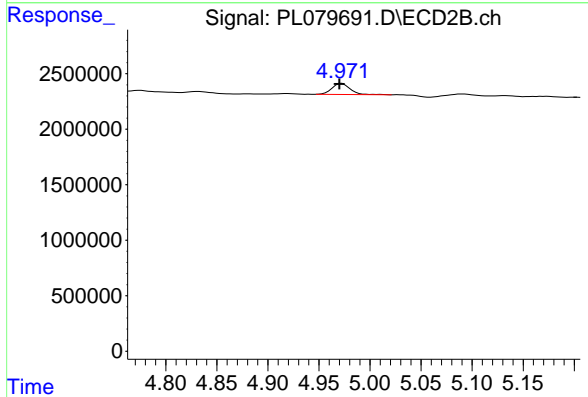
R.T.: 3.674 min
 Delta R.T.: 0.002 min
 Response: 19177638
 Conc: 12.66 ng/ml



#12 4,4'-DDE

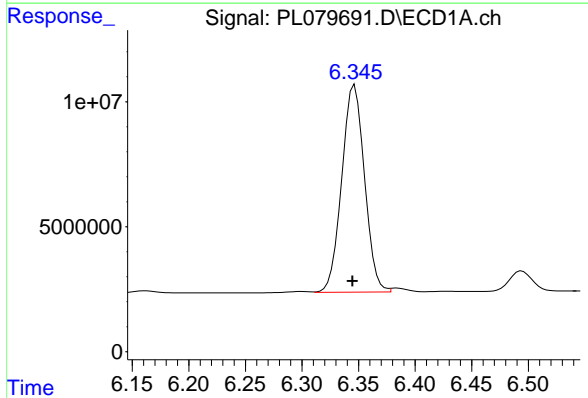
R.T.: 5.969 min
 Delta R.T.: 0.002 min
 Response: 970621
 Conc: 0.39 ng/ml

Instrument :
 ECD_L
 ClientSampleId :
 PEM



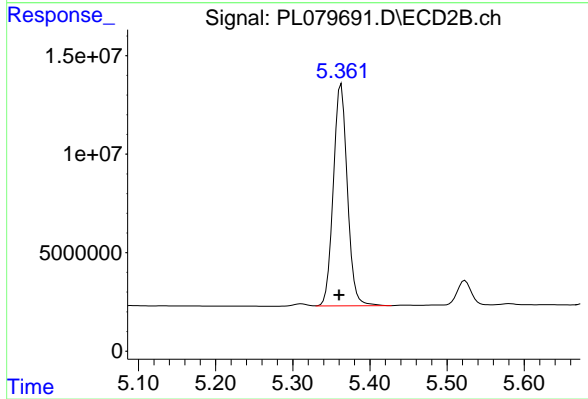
#12 4,4'-DDE

R.T.: 4.972 min
 Delta R.T.: 0.002 min
 Response: 1210162
 Conc: 0.39 ng/ml



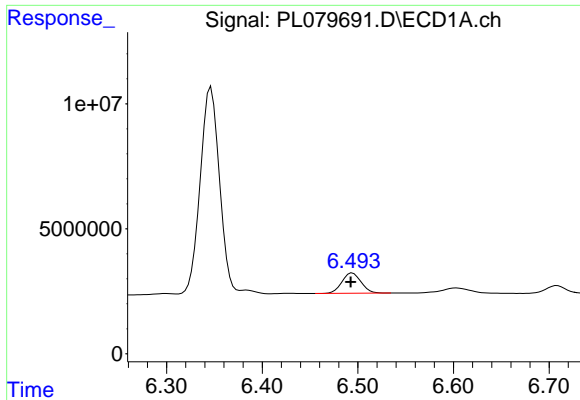
#14 Endrin

R.T.: 6.347 min
 Delta R.T.: 0.002 min
 Response: 116023125
 Conc: 47.96 ng/ml



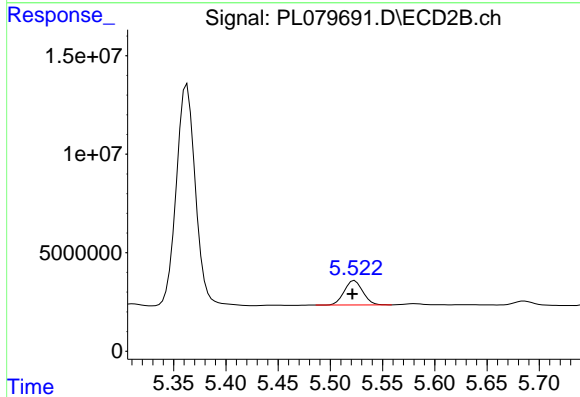
#14 Endrin

R.T.: 5.363 min
 Delta R.T.: 0.003 min
 Response: 142890905
 Conc: 47.24 ng/ml

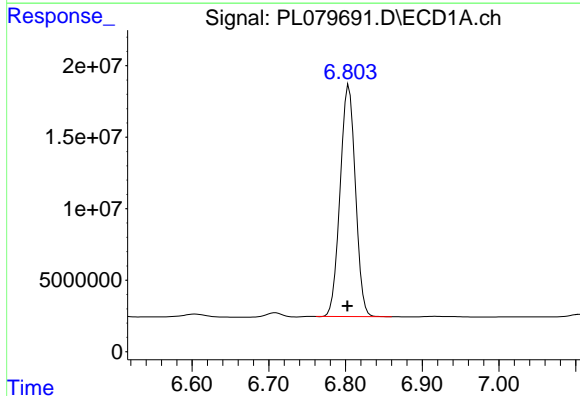


#16 4,4'-DDD
 R.T.: 6.494 min
 Delta R.T.: 0.002 min
 Response: 11339156
 Conc: 5.72 ng/ml

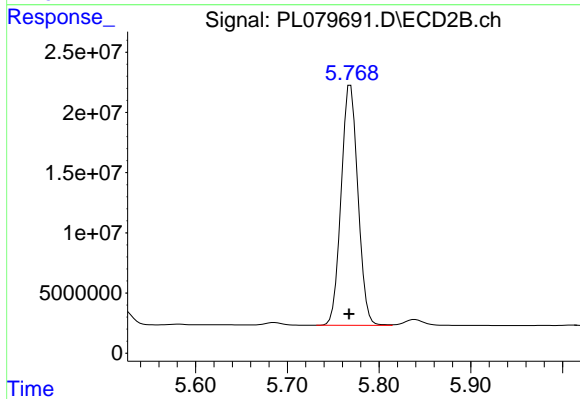
Instrument :
 ECD_L
 ClientSampleId :
 PEM



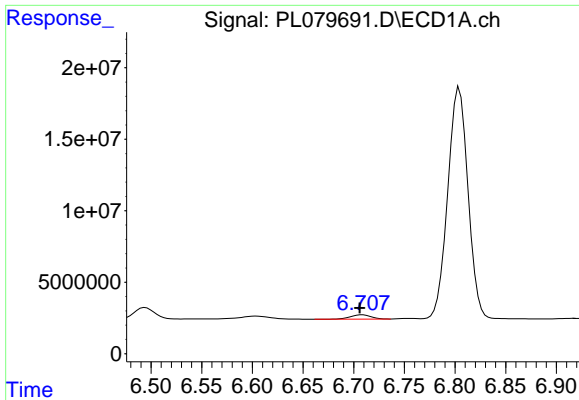
#16 4,4'-DDD
 R.T.: 5.523 min
 Delta R.T.: 0.002 min
 Response: 15223579
 Conc: 6.09 ng/ml



#17 4,4'-DDT
 R.T.: 6.804 min
 Delta R.T.: 0.002 min
 Response: 224568090
 Conc: 99.00 ng/ml



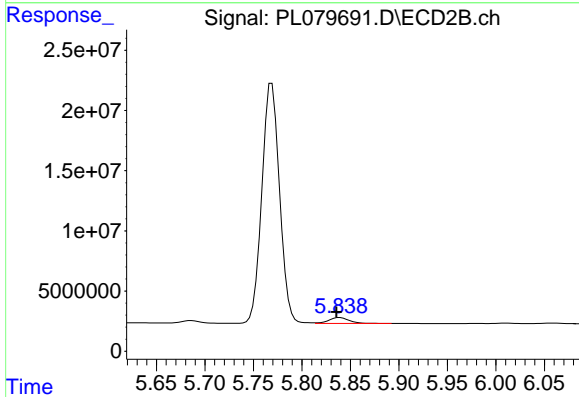
#17 4,4'-DDT
 R.T.: 5.769 min
 Delta R.T.: 0.002 min
 Response: 253206585
 Conc: 96.88 ng/ml



#18 Endrin aldehyde

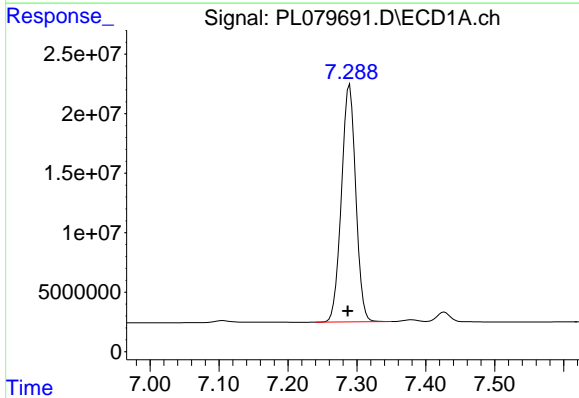
R.T.: 6.709 min
 Delta R.T.: 0.003 min
 Response: 4170014
 Conc: 2.30 ng/ml

Instrument :
 ECD_L
 ClientSampleId :
 PEM



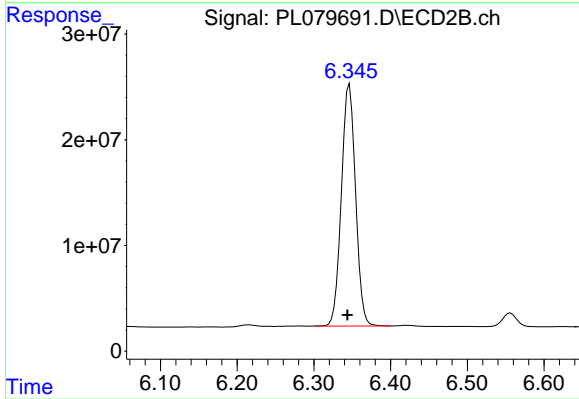
#18 Endrin aldehyde

R.T.: 5.839 min
 Delta R.T.: 0.004 min
 Response: 7009160
 Conc: 3.29 ng/ml



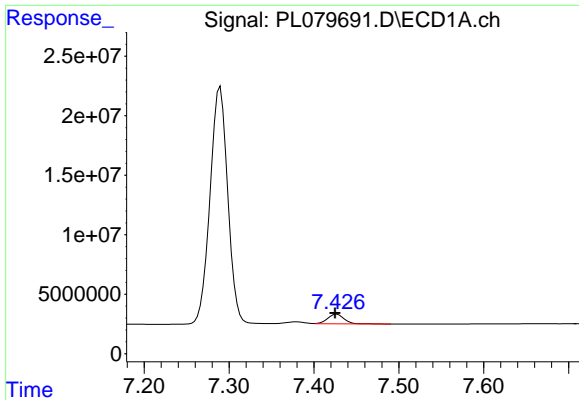
#20 Methoxychlor

R.T.: 7.290 min
 Delta R.T.: 0.003 min
 Response: 288192289
 Conc: 238.89 ng/ml



#20 Methoxychlor

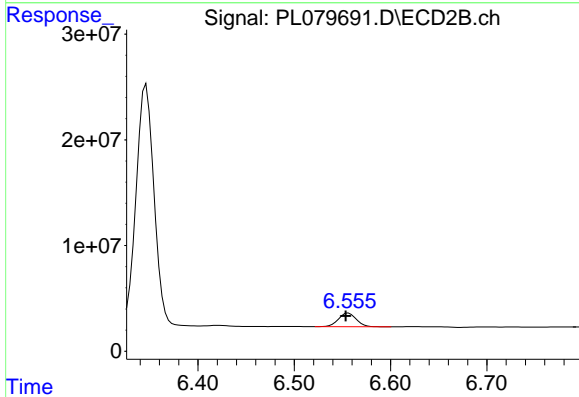
R.T.: 6.346 min
 Delta R.T.: 0.003 min
 Response: 294366828
 Conc: 216.58 ng/ml



#21 Endrin ketone

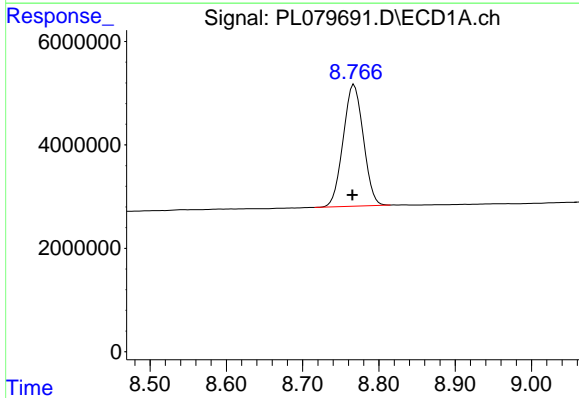
R.T.: 7.427 min
 Delta R.T.: 0.002 min
 Response: 10975061
 Conc: 4.45 ng/ml

Instrument :
 ECD_L
 ClientSampleId :
 PEM



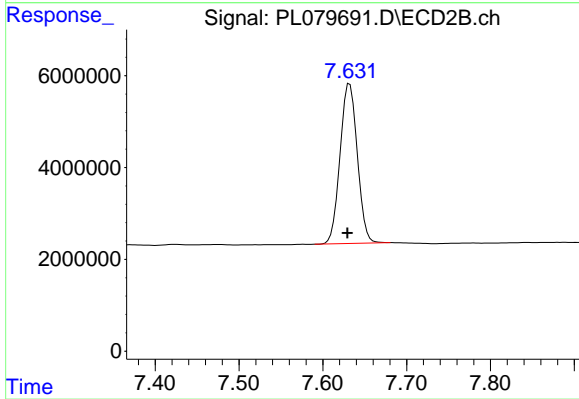
#21 Endrin ketone

R.T.: 6.556 min
 Delta R.T.: 0.003 min
 Response: 16539577
 Conc: 5.37 ng/ml



#28 Decachlorobiphenyl

R.T.: 8.768 min
 Delta R.T.: 0.003 min
 Response: 43171927
 Conc: 22.23 ng/ml



#28 Decachlorobiphenyl

R.T.: 7.632 min
 Delta R.T.: 0.003 min
 Response: 49927582
 Conc: 21.25 ng/ml