

Data Path : Z:\pestpcbsrv\HPCHEM1\ECD_L\Data\PL121420\
 Data File : PL063587.D
 Signal(s) : Signal #1: ECD1A.ch Signal #2: ECD2B.ch
 Acq On : 14 Dec 2020 13:32
 Operator : DD\AJ
 Sample : L5042-02
 Misc :
 ALS Vial : 18 Sample Multiplier: 1

Instrument :
 ECD_L
 ClientSampleId :
 KENS-B6-121020-0-6

Integration File signal 1: autoint1.e
 Integration File signal 2: autoint2.e
 Quant Time: Dec 15 02:44:20 2020
 Quant Method : Z:\pestpcbsrv\HPCHEM1\ECD_L\methods\PL121020.M
 Quant Title : GC Extractables
 QLast Update : Thu Dec 10 15:57:40 2020
 Response via : Initial Calibration
 Integrator: ChemStation

Volume Inj. : 1 µl
 Signal #1 Phase : ZB-MR2 Signal #2 Phase: ZB-MR1
 Signal #1 Info : 30M x 0.32mm x0.2 Signal #2 Info : 30M x 0.32mm x0.5µm

| Compound | RT#1 | RT#2 | Resp#1 | Resp#2 | ng/ml | ng/ml |
|-----------------------------|-------|-------|----------|----------|--------|--------|
| ----- | | | | | | |
| System Monitoring Compounds | | | | | | |
| 1) SA Tetrachlo... | 3.410 | 3.950 | 35745072 | 66875588 | 21.005 | 21.338 |
| 28) SA Decachlor... | 8.127 | 8.992 | 38728220 | 52334520 | 19.231 | 20.781 |

Target Compounds

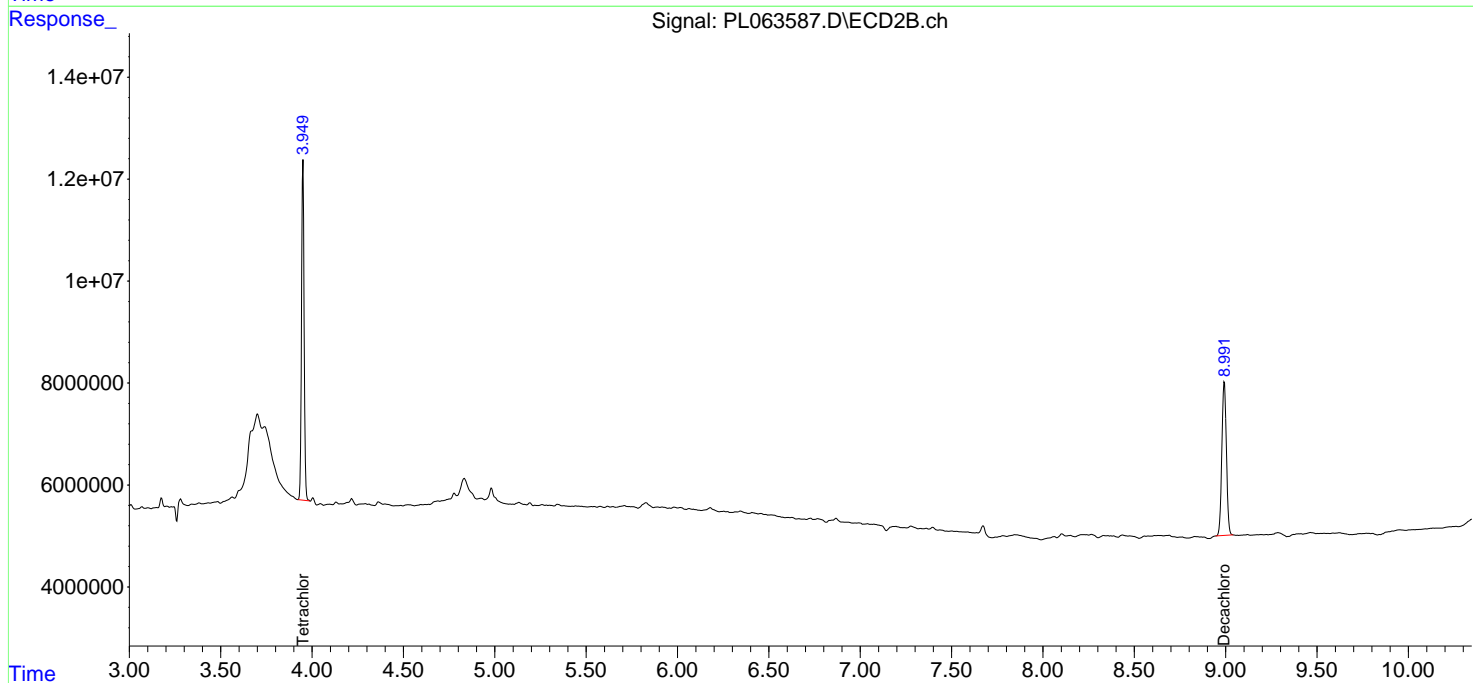
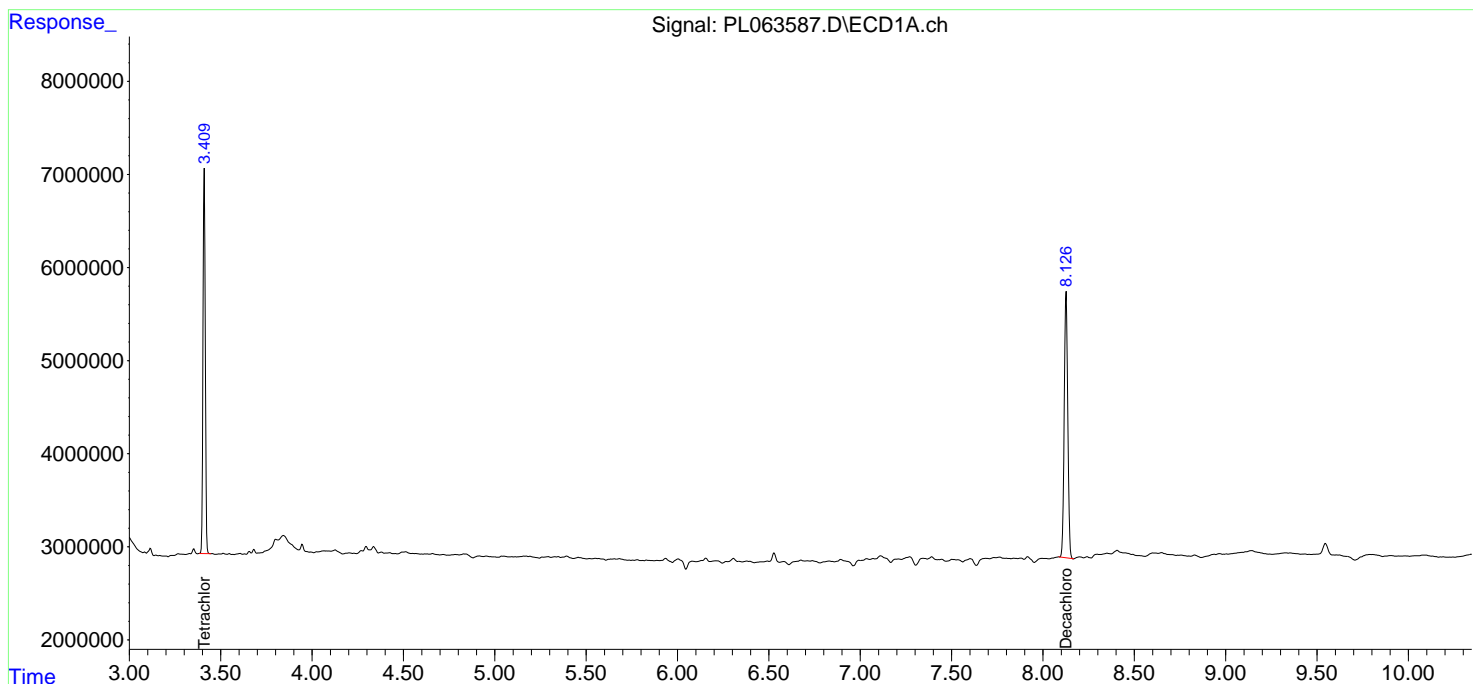
(f)=RT Delta > 1/2 Window (#)=Amounts differ by > 25% (m)=manual int.

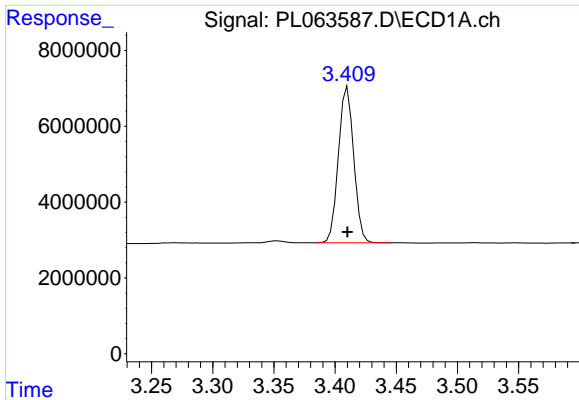
Data Path : Z:\pestpcbsrv\HPCHEM1\ECD_L\Data\PL121420\
 Data File : PL063587.D
 Signal(s) : Signal #1: ECD1A.ch Signal #2: ECD2B.ch
 Acq On : 14 Dec 2020 13:32
 Operator : DD\AJ
 Sample : L5042-02
 Misc :
 ALS Vial : 18 Sample Multiplier: 1

Instrument :
 ECD_L
 ClientSampleId :
 KENS-B6-121020-0-6

Integration File signal 1: autoint1.e
 Integration File signal 2: autoint2.e
 Quant Time: Dec 15 02:44:20 2020
 Quant Method : Z:\pestpcbsrv\HPCHEM1\ECD_L\methods\PL121020.M
 Quant Title : GC Extractables
 QLast Update : Thu Dec 10 15:57:40 2020
 Response via : Initial Calibration
 Integrator: ChemStation

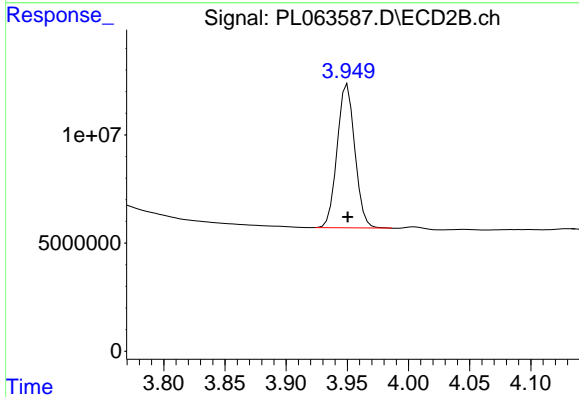
Volume Inj. : 1 µl
 Signal #1 Phase : ZB-MR2 Signal #2 Phase: ZB-MR1
 Signal #1 Info : 30M x 0.32mm x0.2 Signal #2 Info : 30M x 0.32mm x0.5µm



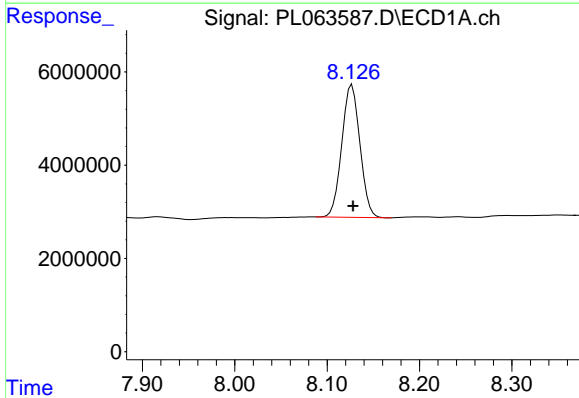


#1 Tetrachloro-m-xylene
R.T.: 3.410 min
Delta R.T.: 0.000 min
Response: 35745072
Conc: 21.01 ng/ml

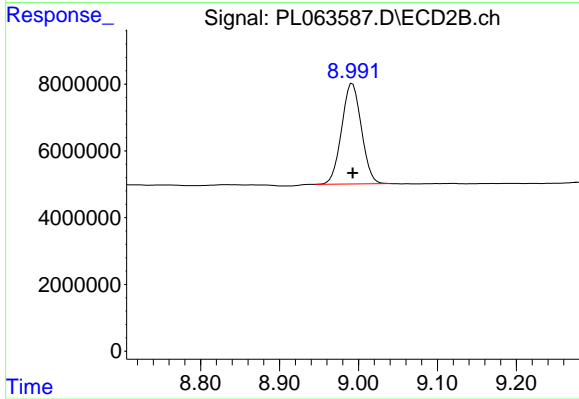
Instrument :
ECD_L
ClientSampleId :
KENS-B6-121020-0-6



#1 Tetrachloro-m-xylene
R.T.: 3.950 min
Delta R.T.: 0.000 min
Response: 66875588
Conc: 21.34 ng/ml



#28 Decachlorobiphenyl
R.T.: 8.127 min
Delta R.T.: -0.001 min
Response: 38728220
Conc: 19.23 ng/ml



#28 Decachlorobiphenyl
R.T.: 8.992 min
Delta R.T.: 0.000 min
Response: 52334520
Conc: 20.78 ng/ml