

Data Path : Z:\pestpcbsrv\HPCHEM1\ECD\_L\Data\PL121420\  
 Data File : PL063592.D  
 Signal(s) : Signal #1: ECD1A.ch Signal #2: ECD2B.ch  
 Acq On : 14 Dec 2020 14:47  
 Operator : DD\AJ  
 Sample : L5066-06MSD  
 Misc :  
 ALS Vial : 23 Sample Multiplier: 1

**Instrument :**  
 ECD\_L  
**ClientSampleId :**  
 JBD-BOLLARDS-0-6MSD

**Manual Integrations**  
**APPROVED**  
 Ankita  
 12/15/2020 3:53:05 PM

Integration File signal 1: autoint1.e  
 Integration File signal 2: autoint2.e  
 Quant Time: Dec 15 02:46:14 2020  
 Quant Method : Z:\pestpcbsrv\HPCHEM1\ECD\_L\methods\PL121020.M  
 Quant Title : GC Extractables  
 QLast Update : Thu Dec 10 15:57:40 2020  
 Response via : Initial Calibration  
 Integrator: ChemStation

Volume Inj. : 1 µl  
 Signal #1 Phase : ZB-MR2 Signal #2 Phase: ZB-MR1  
 Signal #1 Info : 30M x 0.32mm x0.2 Signal #2 Info : 30M x 0.32mm x0.5µm

	Compound	RT#1	RT#2	Resp#1	Resp#2	ng/ml	ng/ml
-----							
System Monitoring Compounds							
1)	SA Tetrachlo...	3.411	3.950	24833791	35611769	14.593	11.362
2)	SA Decachlor...	8.128	8.992	23868533	33792171	11.852	13.418
Target Compounds							
2)	A alpha-BHC	3.842	4.338	86948859	169.3E6	34.689	35.767
3)	MA gamma-BHC...	4.123	4.620	84039902	141.0E6	36.874	31.630
4)	MA Heptachlor	4.419	5.125	68959486	114.9E6	32.122	27.971
5)	MB Aldrin	4.664	5.428	61222806	107.0E6	32.108	27.666
6)	B beta-BHC	4.373	4.792	32052854	69393989	33.011	34.933
7)	B delta-BHC	4.573	5.006	77765339	141.4E6	35.722	34.925
8)	B Heptachlo...	5.102	5.815	66297843	104.5E6	35.636	28.852
9)	A Endosulfan I	5.438	6.170	62198152	100.9E6	35.636	30.236
10)	B gamma-Chl...	5.328	6.048	67806249	105.6E6	36.455	29.748
11)	B alpha-Chl...	5.385	6.120	60295611	100.9E6	32.432	28.463
12)	B 4,4'-DDE	5.550	6.279	51180250	95279150	30.133	27.205
13)	MA Dieldrin	5.677	6.426	67002072	107.4E6	36.804m	31.265
14)	MA Endrin	5.933	6.644	58139685	101.0E6	34.640	34.543
15)	B Endosulfa...	6.206	6.854	58000984	87941739	32.773	27.611
16)	A 4,4'-DDD	6.062	6.769	48172514	84998055	32.092	31.359
17)	MA 4,4'-DDT	6.301	7.068	40166835	79358394	29.271	31.037
18)	B Endrin al...	6.373	6.978	41488146	69555938	27.066	27.257
19)	B Endosulfa...	6.585	7.202	61332154	88285789	35.764	31.737
20)	A Methoxychlor	6.845	7.528	28488176	40527002	32.016	29.059
21)	B Endrin ke...	7.072	7.671	70485932	101.8E6	35.299	34.900
22)	Mirex	7.256	8.124	41227973	59943620	25.967m	30.085

(f)=RT Delta > 1/2 Window (#)=Amounts differ by > 25% (m)=manual int.

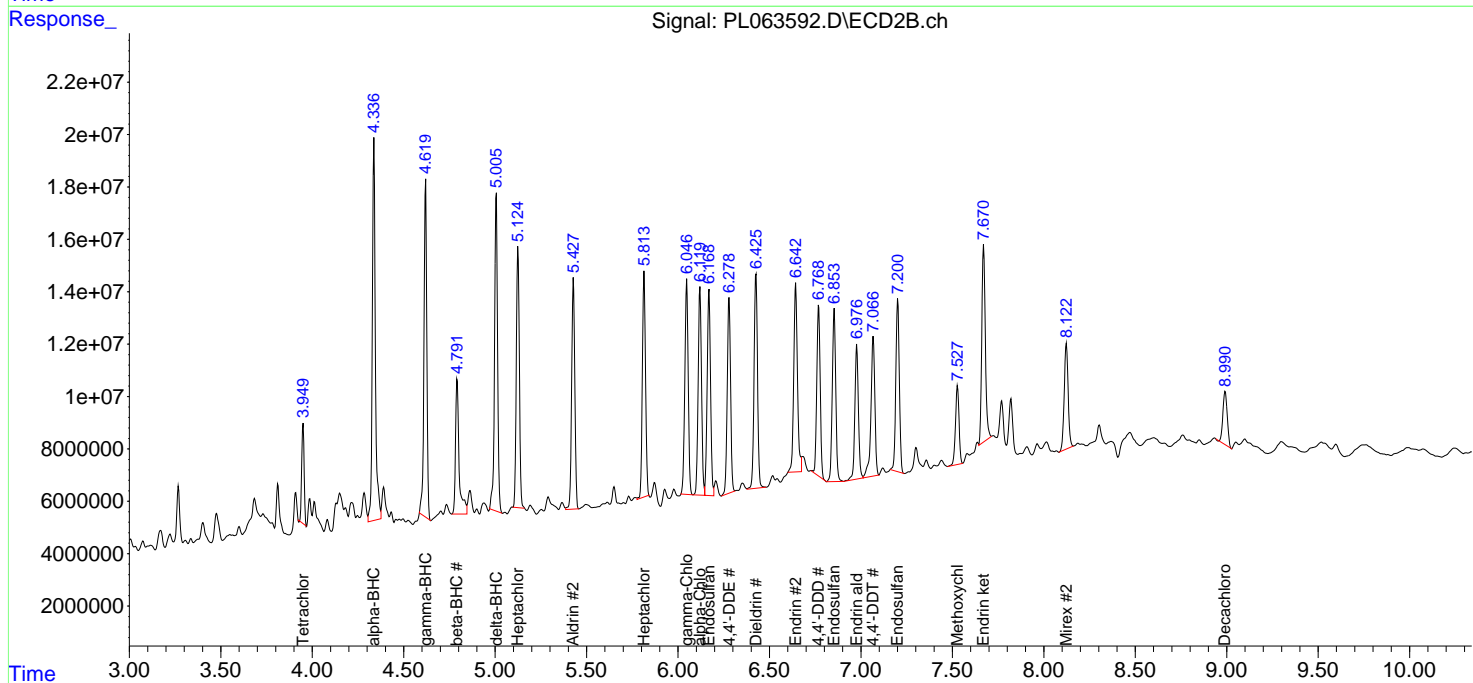
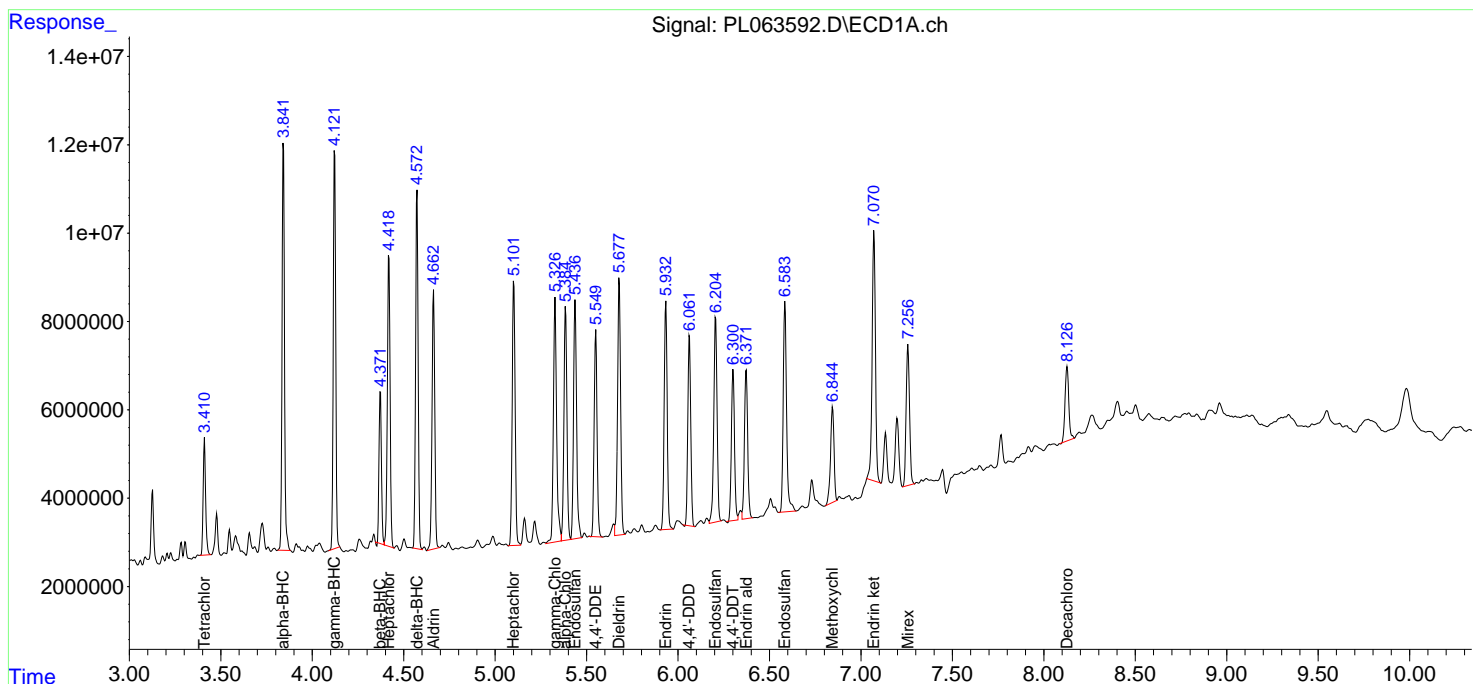
Data Path : Z:\pestpcbsrv\HPCHEM1\ECD\_L\Data\PL121420\  
 Data File : PL063592.D  
 Signal(s) : Signal #1: ECD1A.ch Signal #2: ECD2B.ch  
 Acq On : 14 Dec 2020 14:47  
 Operator : DD\AJ  
 Sample : L5066-06MSD  
 Misc :  
 ALS Vial : 23 Sample Multiplier: 1

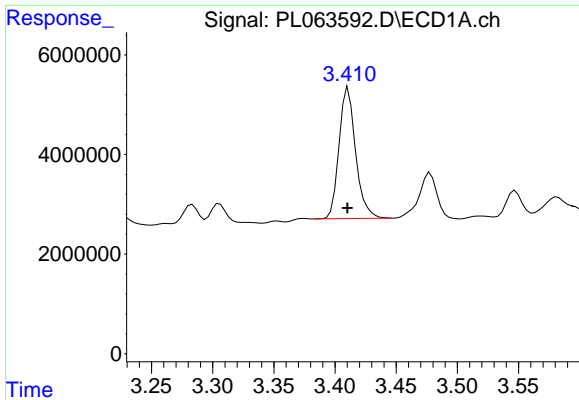
**Instrument :**  
 ECD\_L  
**Client Sampled :**  
 JBD-BOLLARDS-0-6MSD

**Manual Integrations**  
**APPROVED**  
 Ankita  
 12/15/2020 3:53:05 PM

Integration File signal 1: autoint1.e  
 Integration File signal 2: autoint2.e  
 Quant Time: Dec 15 02:46:14 2020  
 Quant Method : Z:\pestpcbsrv\HPCHEM1\ECD\_L\methods\PL121020.M  
 Quant Title : GC Extractables  
 QLast Update : Thu Dec 10 15:57:40 2020  
 Response via : Initial Calibration  
 Integrator: ChemStation

Volume Inj. : 1 µl  
 Signal #1 Phase : ZB-MR2 Signal #2 Phase: ZB-MR1  
 Signal #1 Info : 30M x 0.32mm x0.2 Signal #2 Info : 30M x 0.32mm x0.5µm

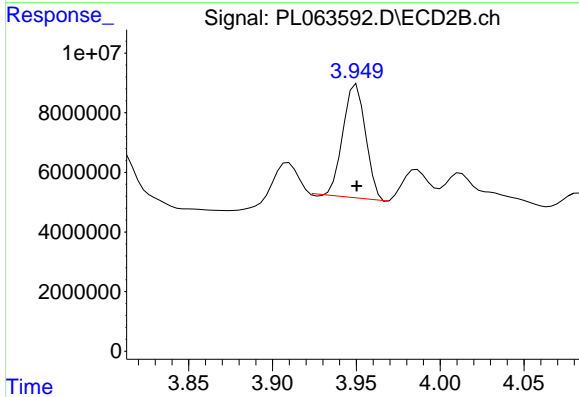




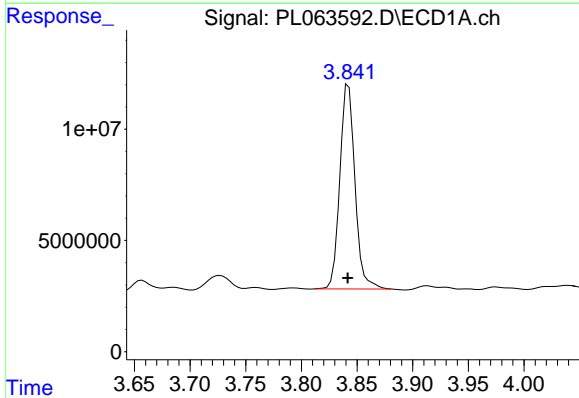
#1 Tetrachloro-m-xylene  
 R.T.: 3.411 min  
 Delta R.T.: 0.000 min  
 Response: 24833791  
 Conc: 14.59 ng/ml

Instrument :  
 ECD\_L  
 ClientSampleId :  
 JBD-BOLLARDS-0-6MSD

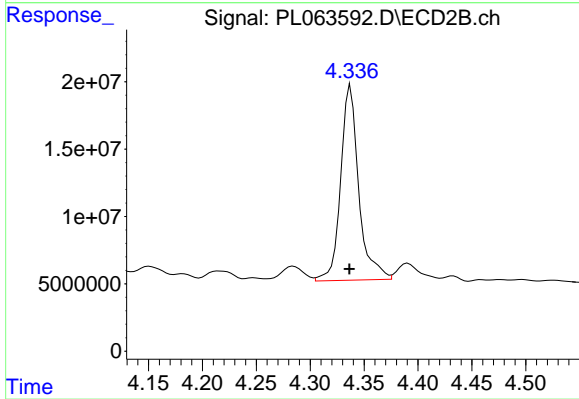
Manual Integrations  
 APPROVED  
 Ankita  
 12/15/2020 3:53:05 PM



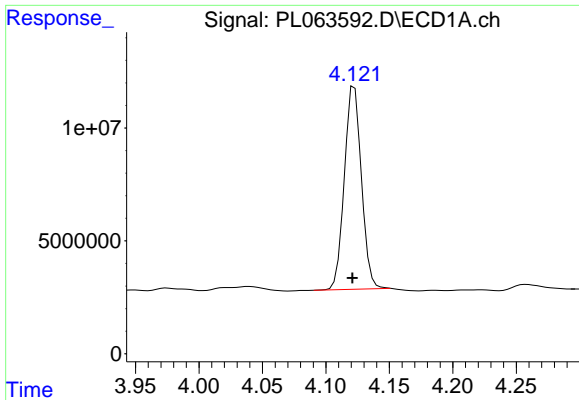
#1 Tetrachloro-m-xylene  
 R.T.: 3.950 min  
 Delta R.T.: 0.000 min  
 Response: 35611769  
 Conc: 11.36 ng/ml



#2 alpha-BHC  
 R.T.: 3.842 min  
 Delta R.T.: 0.000 min  
 Response: 86948859  
 Conc: 34.69 ng/ml



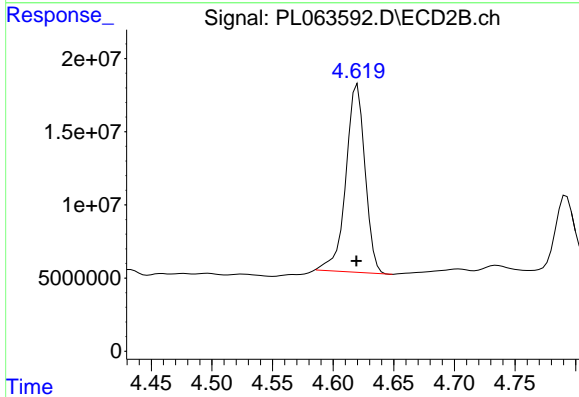
#2 alpha-BHC  
 R.T.: 4.338 min  
 Delta R.T.: 0.001 min  
 Response: 169307568  
 Conc: 35.77 ng/ml



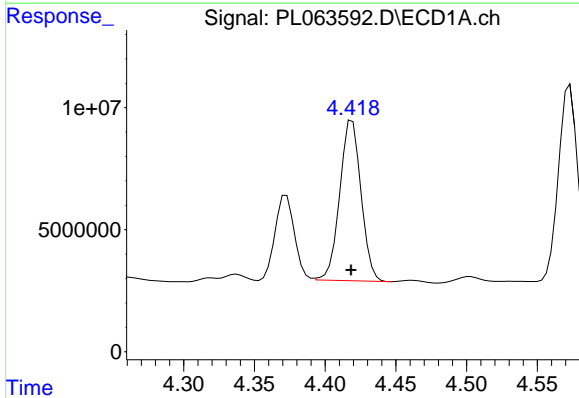
#3 gamma-BHC (Lindane)  
 R.T.: 4.123 min  
 Delta R.T.: 0.002 min  
 Response: 84039902  
 Conc: 36.87 ng/ml

**Instrument :**  
 ECD\_L  
**ClientSampleId :**  
 JBD-BOLLARDS-0-6MSD

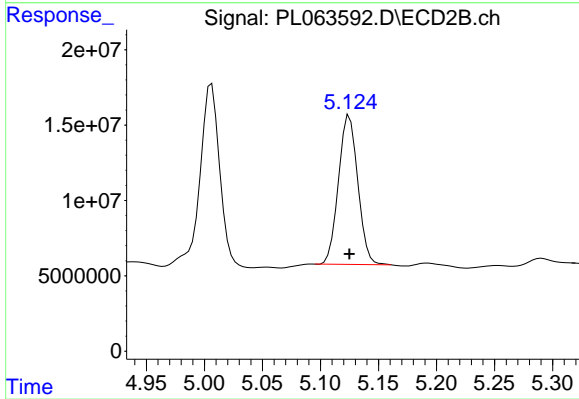
**Manual Integrations**  
**APPROVED**  
 Ankita  
 12/15/2020 3:53:05 PM



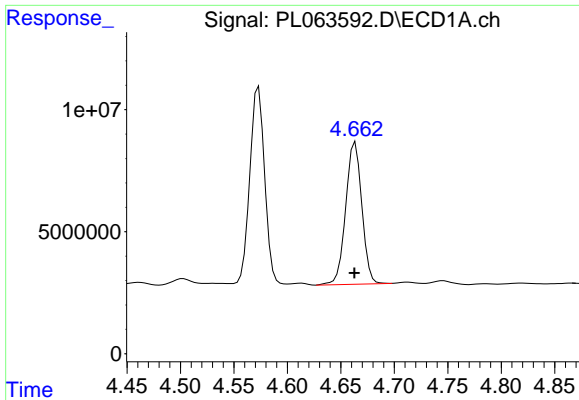
#3 gamma-BHC (Lindane)  
 R.T.: 4.620 min  
 Delta R.T.: 0.000 min  
 Response: 141016817  
 Conc: 31.63 ng/ml



#4 Heptachlor  
 R.T.: 4.419 min  
 Delta R.T.: 0.000 min  
 Response: 68959486  
 Conc: 32.12 ng/ml



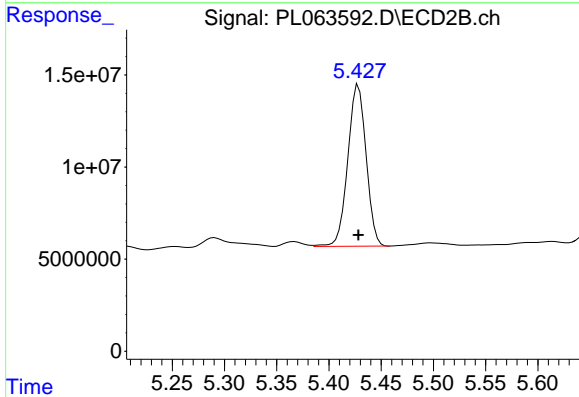
#4 Heptachlor  
 R.T.: 5.125 min  
 Delta R.T.: 0.000 min  
 Response: 114852735  
 Conc: 27.97 ng/ml



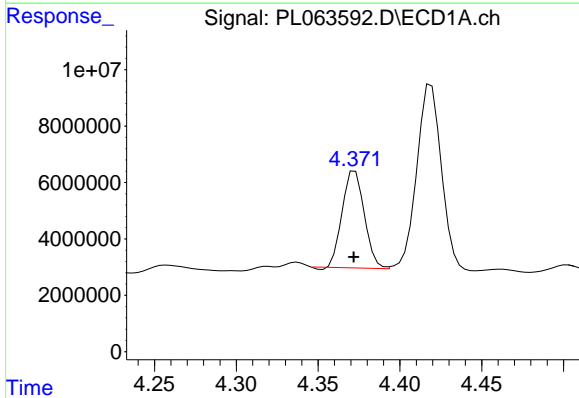
#5 Aldrin  
 R.T.: 4.664 min  
 Delta R.T.: 0.000 min  
 Response: 61222806  
 Conc: 32.11 ng/ml

**Instrument :**  
 ECD\_L  
**ClientSampleId :**  
 JBD-BOLLARDS-0-6MSD

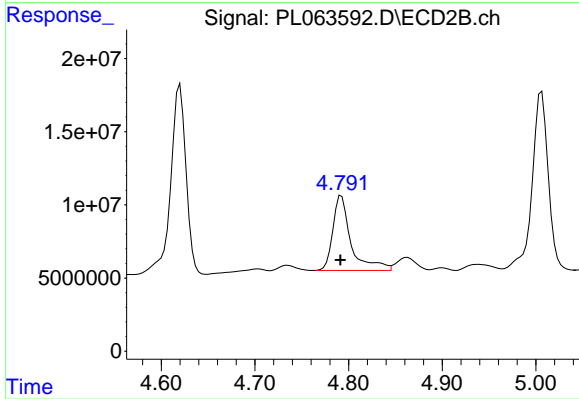
**Manual Integrations**  
**APPROVED**  
 Ankita  
 12/15/2020 3:53:05 PM



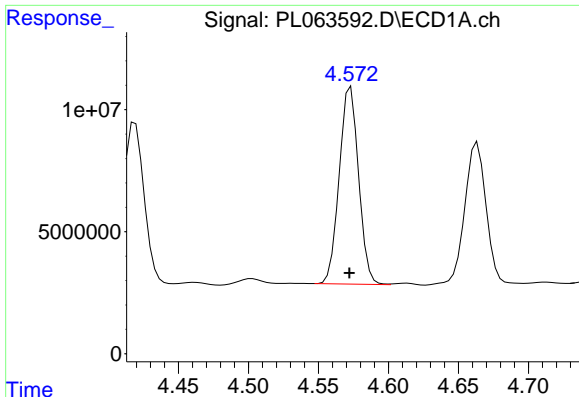
#5 Aldrin  
 R.T.: 5.428 min  
 Delta R.T.: 0.000 min  
 Response: 107041234  
 Conc: 27.67 ng/ml



#6 beta-BHC  
 R.T.: 4.373 min  
 Delta R.T.: 0.000 min  
 Response: 32052854  
 Conc: 33.01 ng/ml



#6 beta-BHC  
 R.T.: 4.792 min  
 Delta R.T.: 0.001 min  
 Response: 69393989  
 Conc: 34.93 ng/ml



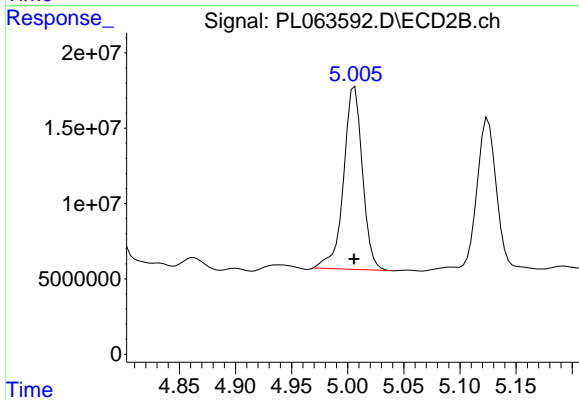
#7 delta-BHC

R.T.: 4.573 min  
 Delta R.T.: 0.001 min  
 Response: 77765339  
 Conc: 35.72 ng/ml

Instrument :  
 ECD\_L  
 ClientSampleId :  
 JBD-BOLLARDS-0-6MSD

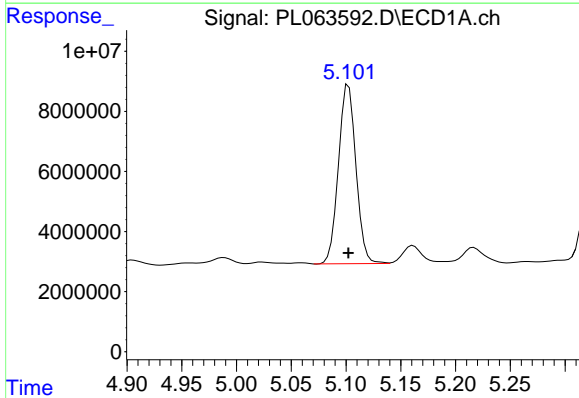
Manual Integrations  
 APPROVED

Ankita  
 12/15/2020 3:53:05 PM



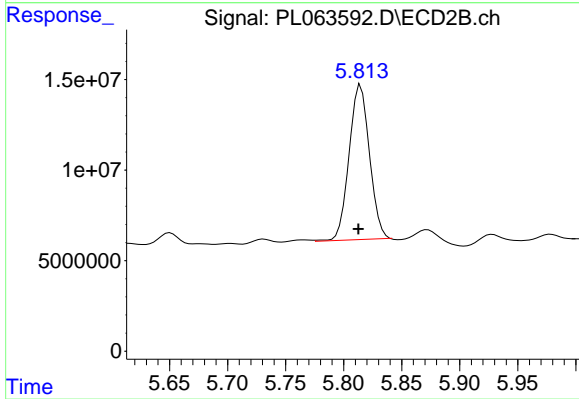
#7 delta-BHC

R.T.: 5.006 min  
 Delta R.T.: 0.000 min  
 Response: 141352645  
 Conc: 34.93 ng/ml



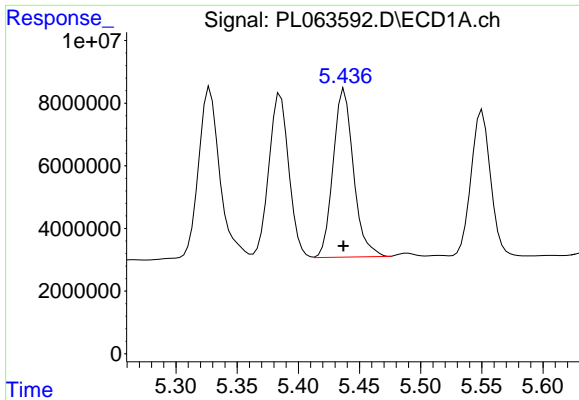
#8 Heptachlor epoxide

R.T.: 5.102 min  
 Delta R.T.: 0.000 min  
 Response: 66297843  
 Conc: 35.64 ng/ml



#8 Heptachlor epoxide

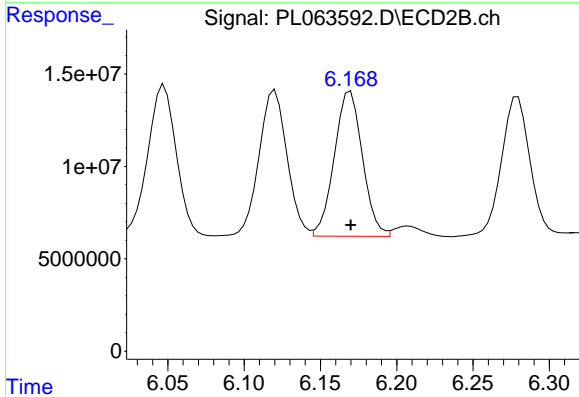
R.T.: 5.815 min  
 Delta R.T.: 0.002 min  
 Response: 104500098  
 Conc: 28.85 ng/ml



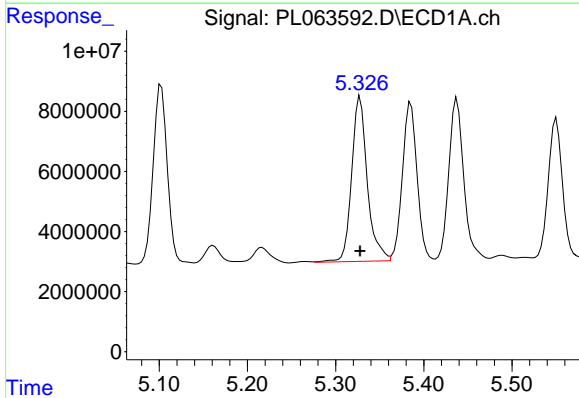
#9 Endosulfan I  
 R.T.: 5.438 min  
 Delta R.T.: 0.000 min  
 Response: 62198152  
 Conc: 35.64 ng/ml

**Instrument :**  
 ECD\_L  
**ClientSampled :**  
 JBD-BOLLARDS-0-6MSD

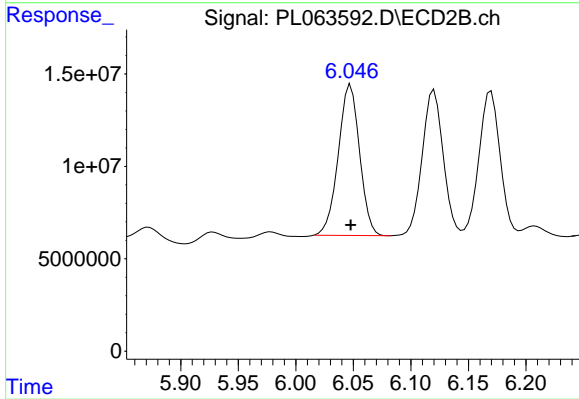
**Manual Integrations**  
**APPROVED**  
 Ankita  
 12/15/2020 3:53:05 PM



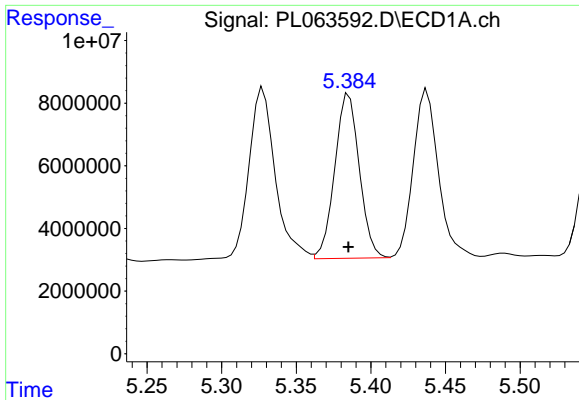
#9 Endosulfan I  
 R.T.: 6.170 min  
 Delta R.T.: 0.000 min  
 Response: 100917683  
 Conc: 30.24 ng/ml



#10 gamma-Chlordane  
 R.T.: 5.328 min  
 Delta R.T.: 0.000 min  
 Response: 67806249  
 Conc: 36.45 ng/ml



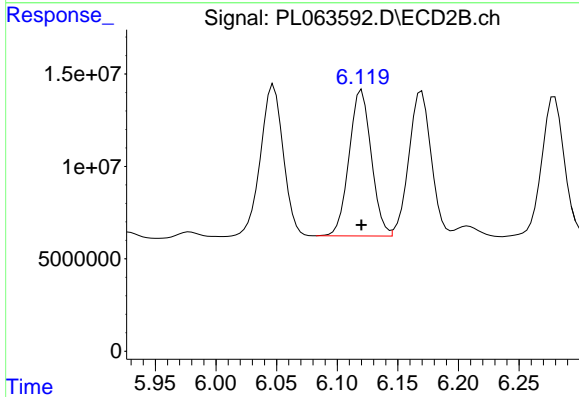
#10 gamma-Chlordane  
 R.T.: 6.048 min  
 Delta R.T.: 0.000 min  
 Response: 105580450  
 Conc: 29.75 ng/ml



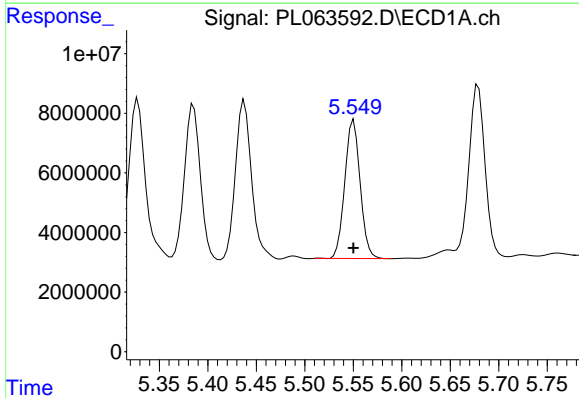
#11 alpha-Chlordane  
 R.T.: 5.385 min  
 Delta R.T.: 0.000 min  
 Response: 60295611  
 Conc: 32.43 ng/ml

**Instrument :**  
 ECD\_L  
**ClientSampled :**  
 JBD-BOLLARDS-0-6MSD

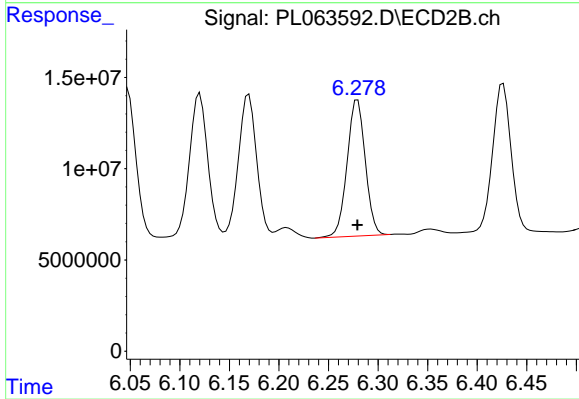
**Manual Integrations**  
**APPROVED**  
 Ankita  
 12/15/2020 3:53:05 PM



#11 alpha-Chlordane  
 R.T.: 6.120 min  
 Delta R.T.: 0.000 min  
 Response: 100877546  
 Conc: 28.46 ng/ml

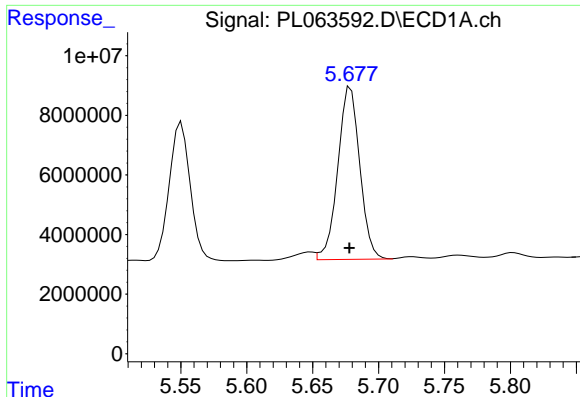


#12 4,4'-DDE  
 R.T.: 5.550 min  
 Delta R.T.: 0.000 min  
 Response: 51180250  
 Conc: 30.13 ng/ml



#12 4,4'-DDE  
 R.T.: 6.279 min  
 Delta R.T.: 0.000 min  
 Response: 95279150  
 Conc: 27.20 ng/ml





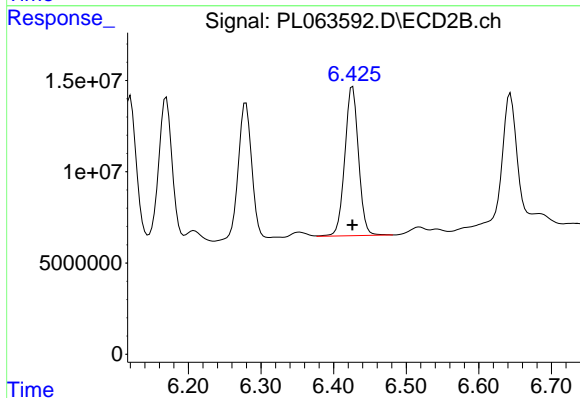
#13 Dieldrin

R.T.: 5.677 min  
 Delta R.T.: 0.000 min  
 Response: 67002072  
 Conc: 36.80 ng/ml m

Instrument :  
 ECD\_L  
 ClientSampleId :  
 JBD-BOLLARDS-0-6MSD

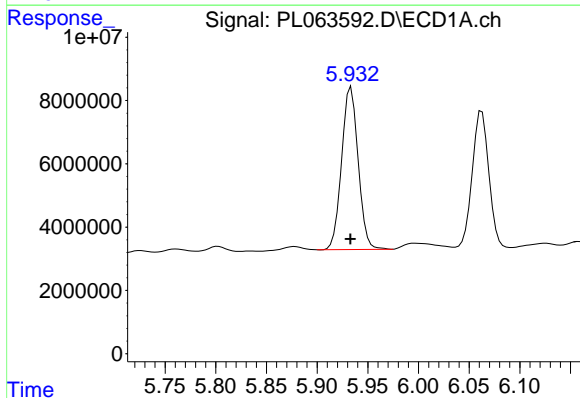
Manual Integrations  
 APPROVED

Ankita  
 12/15/2020 3:53:05 PM



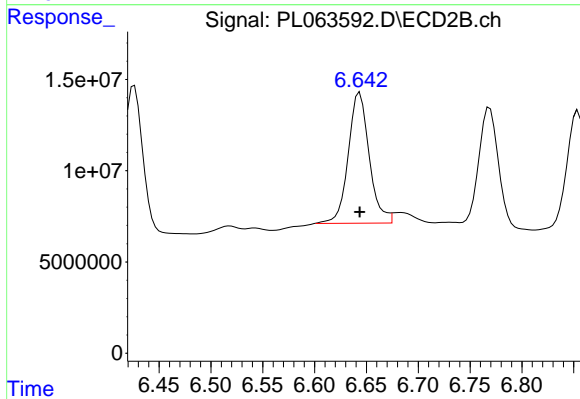
#13 Dieldrin

R.T.: 6.426 min  
 Delta R.T.: 0.000 min  
 Response: 107409513  
 Conc: 31.26 ng/ml



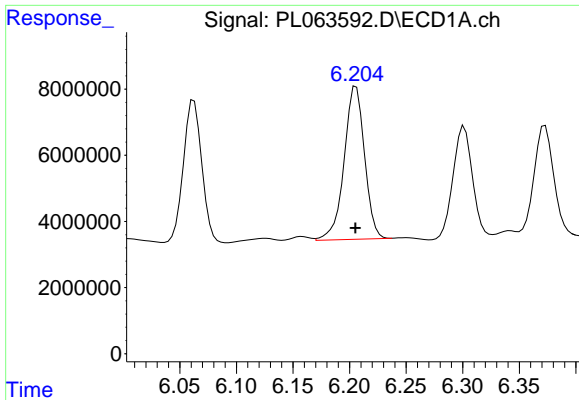
#14 Endrin

R.T.: 5.933 min  
 Delta R.T.: 0.000 min  
 Response: 58139685  
 Conc: 34.64 ng/ml



#14 Endrin

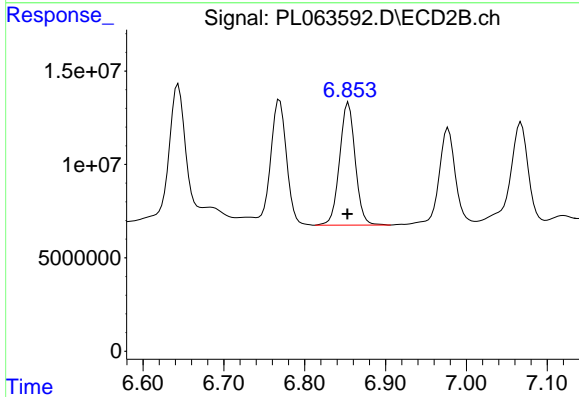
R.T.: 6.644 min  
 Delta R.T.: 0.000 min  
 Response: 101039922  
 Conc: 34.54 ng/ml



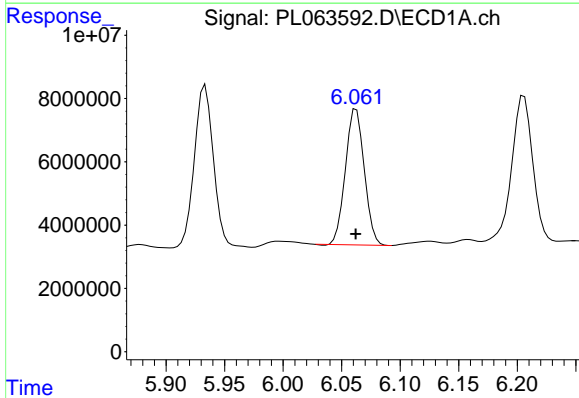
#15 Endosulfan II  
 R.T.: 6.206 min  
 Delta R.T.: 0.000 min  
 Response: 58000984  
 Conc: 32.77 ng/ml

**Instrument :**  
 ECD\_L  
**ClientSampleId :**  
 JBD-BOLLARDS-0-6MSD

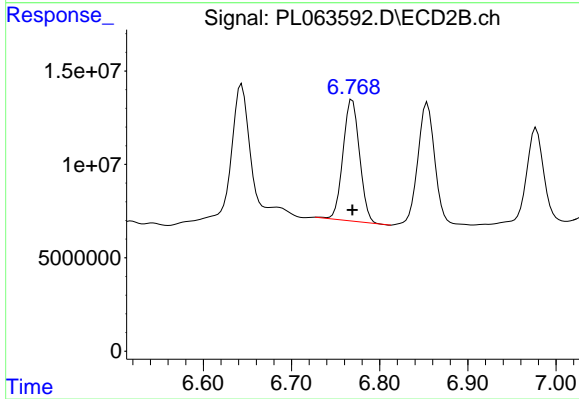
**Manual Integrations**  
**APPROVED**  
 Ankita  
 12/15/2020 3:53:05 PM



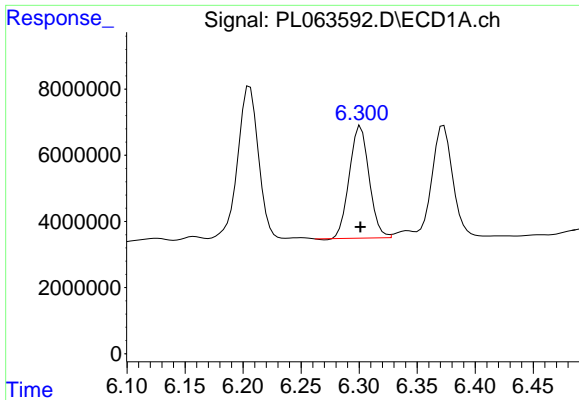
#15 Endosulfan II  
 R.T.: 6.854 min  
 Delta R.T.: 0.001 min  
 Response: 87941739  
 Conc: 27.61 ng/ml



#16 4,4'-DDD  
 R.T.: 6.062 min  
 Delta R.T.: 0.000 min  
 Response: 48172514  
 Conc: 32.09 ng/ml



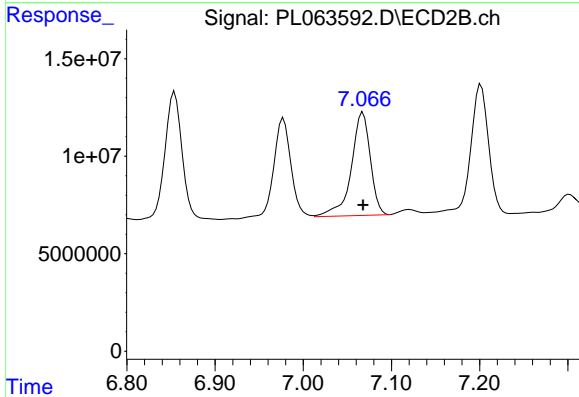
#16 4,4'-DDD  
 R.T.: 6.769 min  
 Delta R.T.: 0.000 min  
 Response: 84998055  
 Conc: 31.36 ng/ml



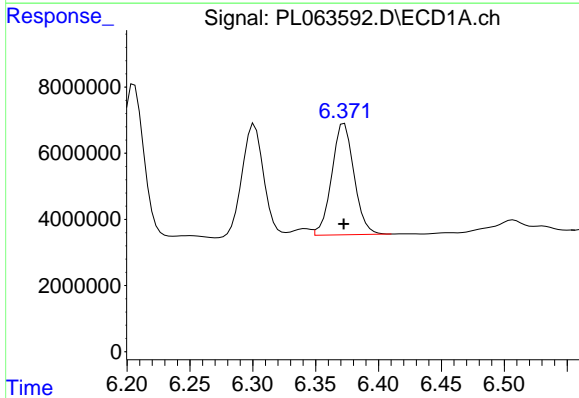
#17 4,4'-DDT  
 R.T.: 6.301 min  
 Delta R.T.: 0.000 min  
 Response: 40166835  
 Conc: 29.27 ng/ml

**Instrument :**  
 ECD\_L  
**ClientSampleId :**  
 JBD-BOLLARDS-0-6MSD

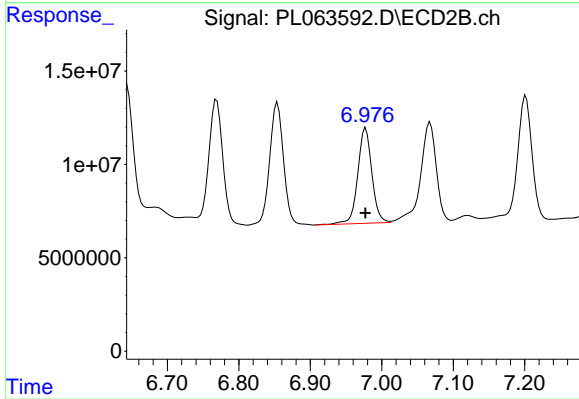
**Manual Integrations**  
**APPROVED**  
 Ankita  
 12/15/2020 3:53:05 PM



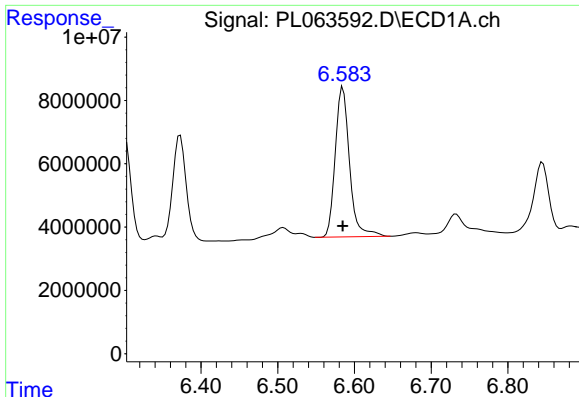
#17 4,4'-DDT  
 R.T.: 7.068 min  
 Delta R.T.: 0.000 min  
 Response: 79358394  
 Conc: 31.04 ng/ml



#18 Endrin aldehyde  
 R.T.: 6.373 min  
 Delta R.T.: 0.000 min  
 Response: 41488146  
 Conc: 27.07 ng/ml



#18 Endrin aldehyde  
 R.T.: 6.978 min  
 Delta R.T.: 0.000 min  
 Response: 69555938  
 Conc: 27.26 ng/ml



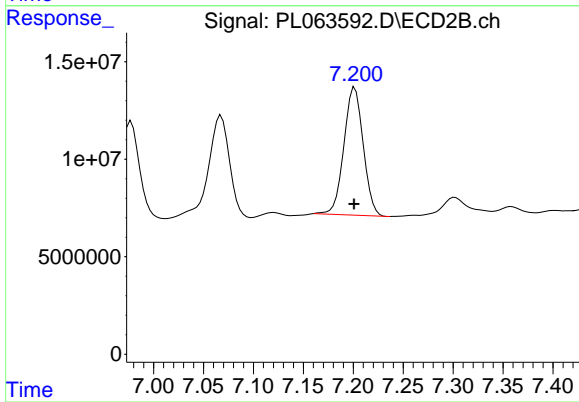
#19 Endosulfan Sulfate

R.T.: 6.585 min  
Delta R.T.: 0.000 min  
Response: 61332154  
Conc: 35.76 ng/ml

Instrument :  
ECD\_L  
ClientSampleId :  
JBD-BOLLARDS-0-6MSD

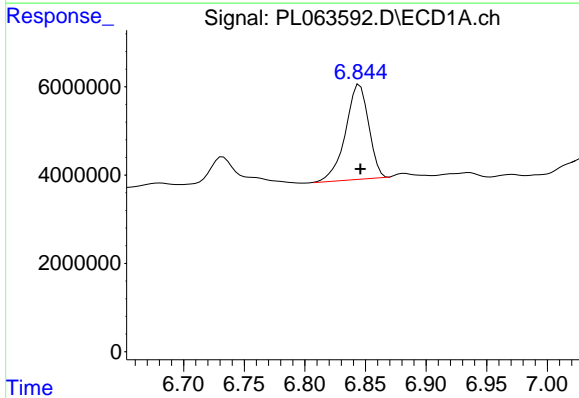
Manual Integrations  
APPROVED

Ankita  
12/15/2020 3:53:05 PM



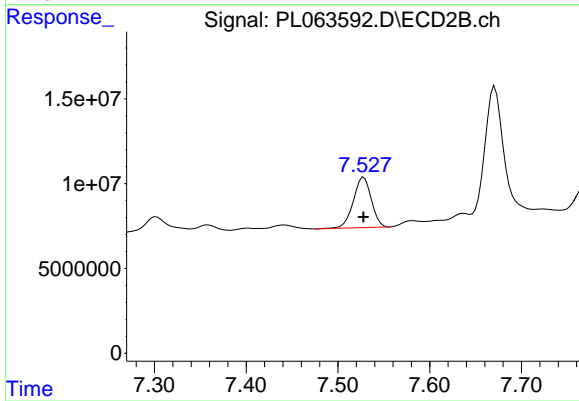
#19 Endosulfan Sulfate

R.T.: 7.202 min  
Delta R.T.: 0.000 min  
Response: 88285789  
Conc: 31.74 ng/ml



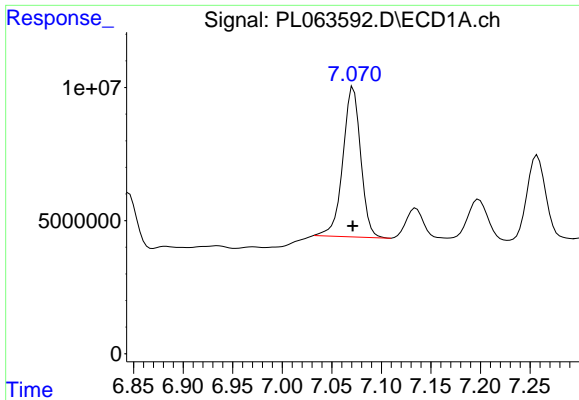
#20 Methoxychlor

R.T.: 6.845 min  
Delta R.T.: 0.000 min  
Response: 28488176  
Conc: 32.02 ng/ml



#20 Methoxychlor

R.T.: 7.528 min  
Delta R.T.: 0.000 min  
Response: 40527002  
Conc: 29.06 ng/ml

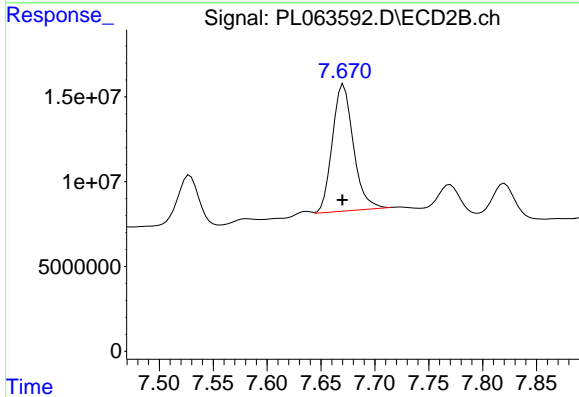


#21 Endrin ketone

R.T.: 7.072 min  
 Delta R.T.: 0.000 min  
 Response: 70485932  
 Conc: 35.30 ng/ml

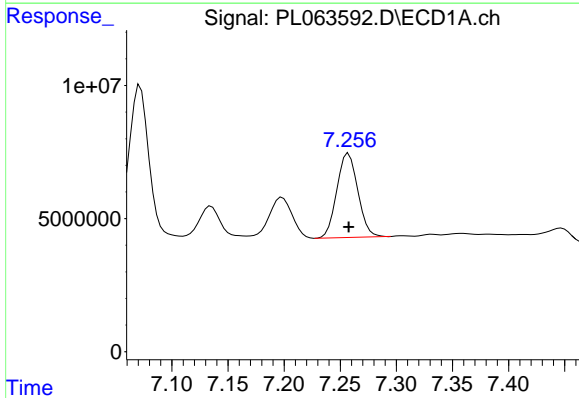
Instrument :  
 ECD\_L  
 ClientSampleId :  
 JBD-BOLLARDS-0-6MSD

Manual Integrations  
 APPROVED  
 Ankita  
 12/15/2020 3:53:05 PM



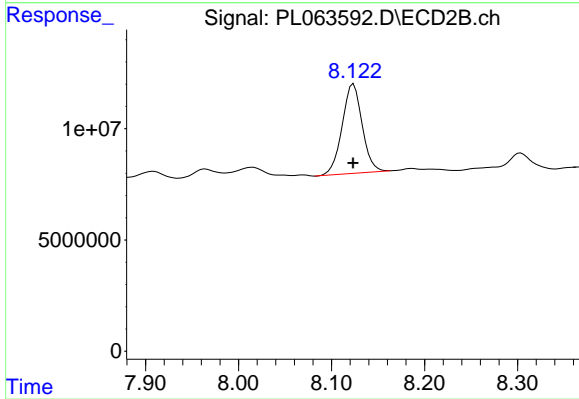
#21 Endrin ketone

R.T.: 7.671 min  
 Delta R.T.: 0.000 min  
 Response: 101798537  
 Conc: 34.90 ng/ml



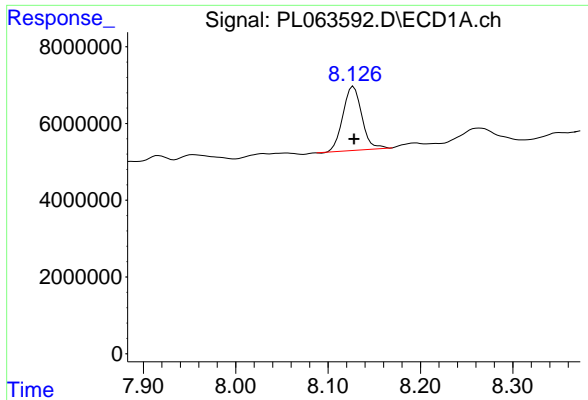
#22 Mirex

R.T.: 7.256 min  
 Delta R.T.: -0.002 min  
 Response: 41227973  
 Conc: 25.97 ng/ml m



#22 Mirex

R.T.: 8.124 min  
 Delta R.T.: 0.000 min  
 Response: 59943620  
 Conc: 30.09 ng/ml



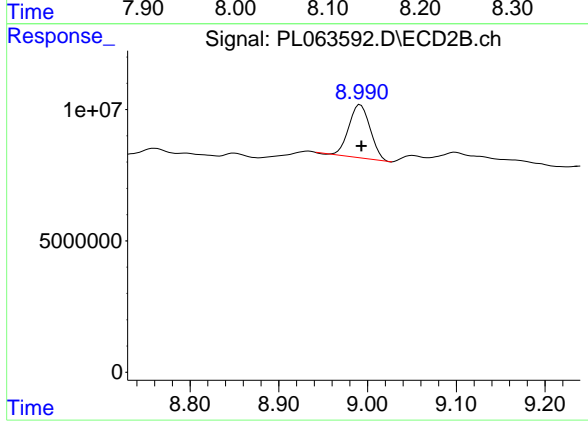
#28 Decachlorobiphenyl

R.T.: 8.128 min  
Delta R.T.: 0.000 min  
Response: 23868533  
Conc: 11.85 ng/ml

Instrument :  
ECD\_L  
ClientSampleId :  
JBD-BOLLARDS-0-6MSD

Manual Integrations  
APPROVED

Ankita  
12/15/2020 3:53:05 PM



#28 Decachlorobiphenyl

R.T.: 8.992 min  
Delta R.T.: 0.000 min  
Response: 33792171  
Conc: 13.42 ng/ml