

Data Path : Z:\pestpcbsrv\HPCHEM1\ECD\_L\Data\PL121420\  
 Data File : PL063599.D  
 Signal(s) : Signal #1: ECD1A.ch Signal #2: ECD2B.ch  
 Acq On : 14 Dec 2020 18:42  
 Operator : DD\AJ  
 Sample : I.BLK  
 Misc :  
 ALS Vial : 2 Sample Multiplier: 1

Instrument :  
 ECD\_L  
 ClientSampleId :  
 I.BLK

Integration File signal 1: autoint1.e  
 Integration File signal 2: autoint2.e  
 Quant Time: Dec 15 02:48:44 2020  
 Quant Method : Z:\pestpcbsrv\HPCHEM1\ECD\_L\methods\PL121020.M  
 Quant Title : GC Extractables  
 QLast Update : Thu Dec 10 15:57:40 2020  
 Response via : Initial Calibration  
 Integrator: ChemStation

Volume Inj. : 1 µl  
 Signal #1 Phase : ZB-MR2 Signal #2 Phase: ZB-MR1  
 Signal #1 Info : 30M x 0.32mm x0.2 Signal #2 Info : 30M x 0.32mm x0.5µm

Compound	RT#1	RT#2	Resp#1	Resp#2	ng/ml	ng/ml
-----						
System Monitoring Compounds						
1) SA Tetrachlo...	3.410	3.950	41810863	75237730	24.570	24.006
28) SA Decachlor...	8.127	8.992	44178739	57742335	21.937	22.929

Target Compounds

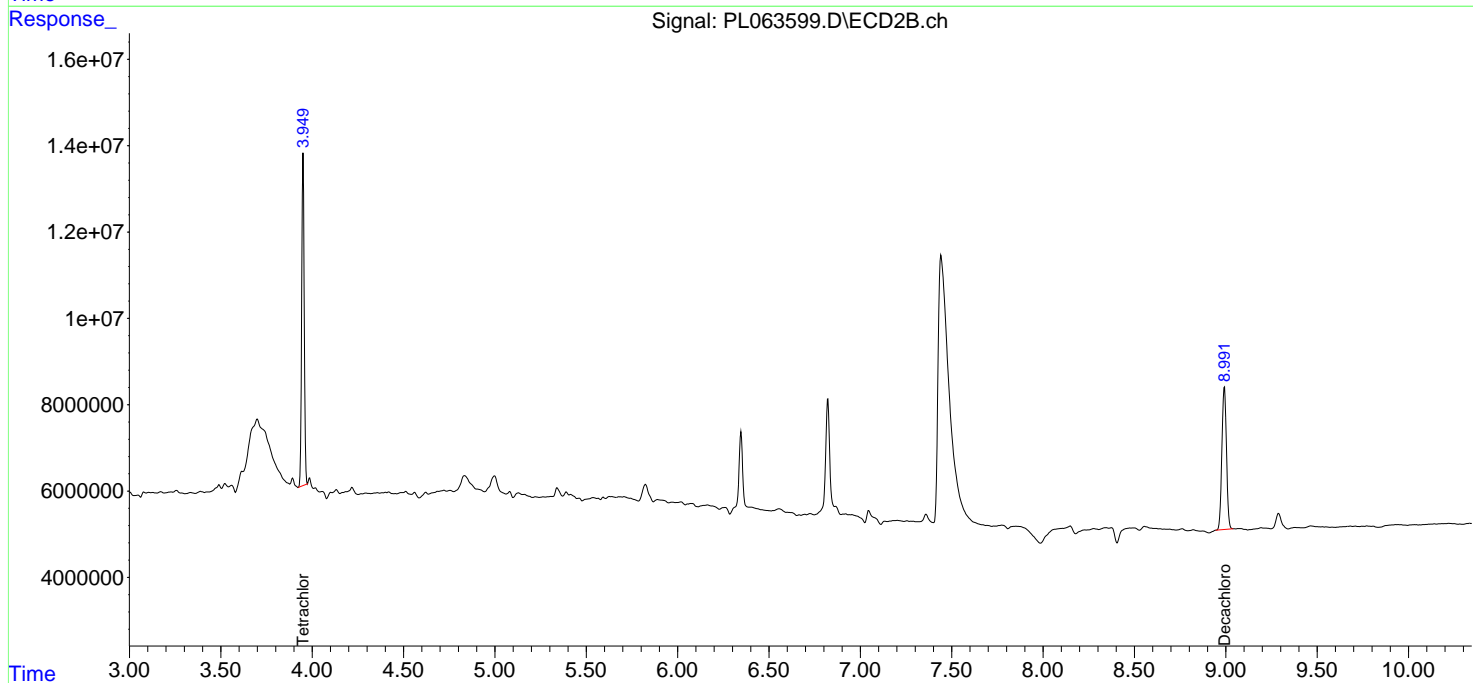
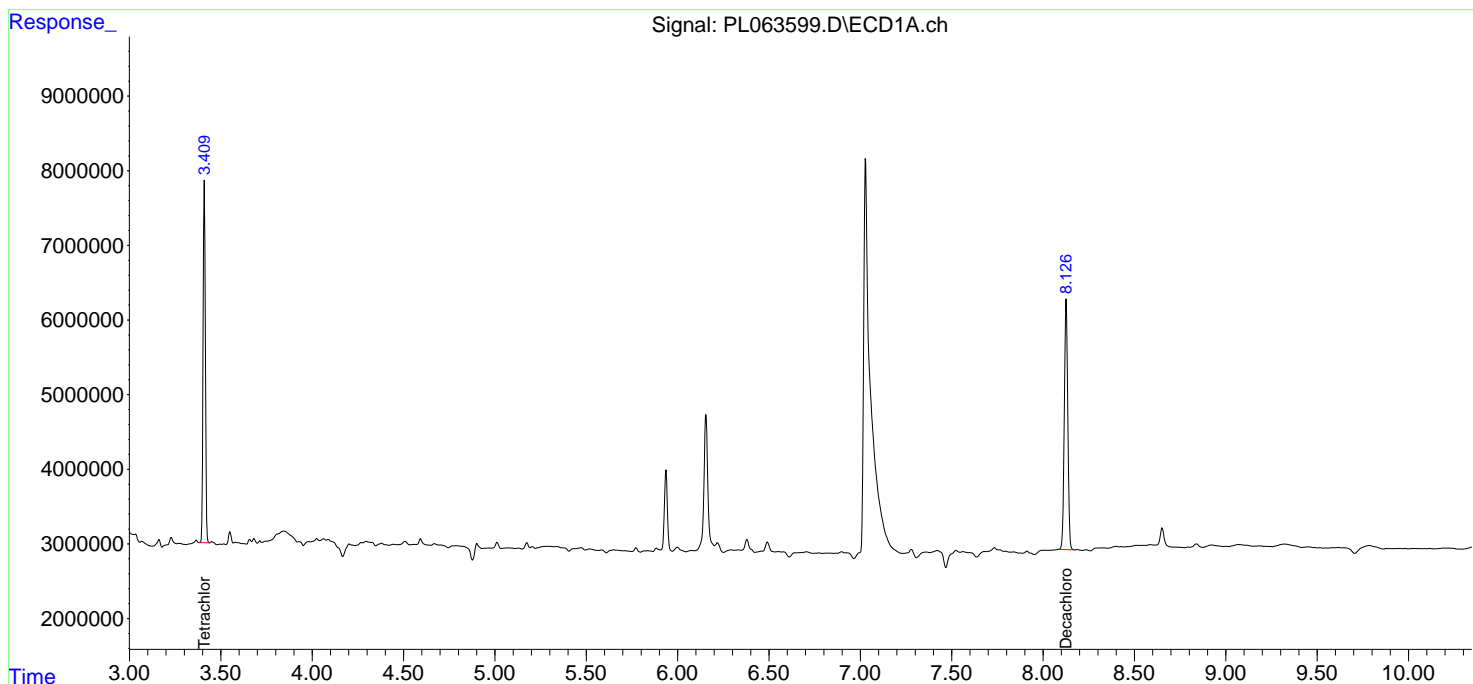
(f)=RT Delta > 1/2 Window (#)=Amounts differ by > 25% (m)=manual int.

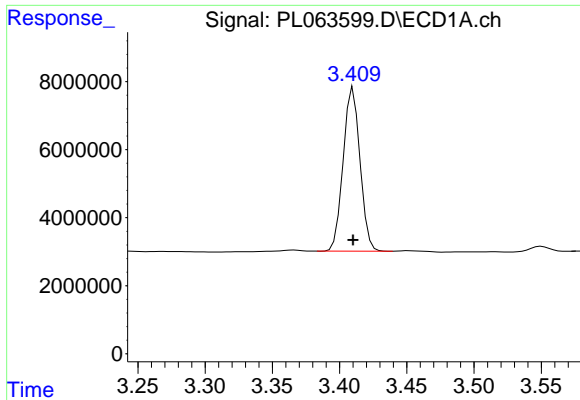
Data Path : Z:\pestpcbsrv\HPCHEM1\ECD\_L\Data\PL121420\  
 Data File : PL063599.D  
 Signal(s) : Signal #1: ECD1A.ch Signal #2: ECD2B.ch  
 Acq On : 14 Dec 2020 18:42  
 Operator : DD\AJ  
 Sample : I.BLK  
 Misc :  
 ALS Vial : 2 Sample Multiplier: 1

Instrument :  
 ECD\_L  
 ClientSampled :  
 I.BLK

Integration File signal 1: autoint1.e  
 Integration File signal 2: autoint2.e  
 Quant Time: Dec 15 02:48:44 2020  
 Quant Method : Z:\pestpcbsrv\HPCHEM1\ECD\_L\methods\PL121020.M  
 Quant Title : GC Extractables  
 QLast Update : Thu Dec 10 15:57:40 2020  
 Response via : Initial Calibration  
 Integrator: ChemStation

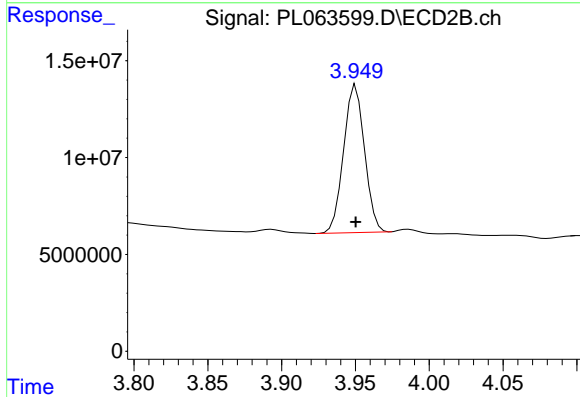
Volume Inj. : 1 µl  
 Signal #1 Phase : ZB-MR2 Signal #2 Phase: ZB-MR1  
 Signal #1 Info : 30M x 0.32mm x0.2 Signal #2 Info : 30M x 0.32mm x0.5µm



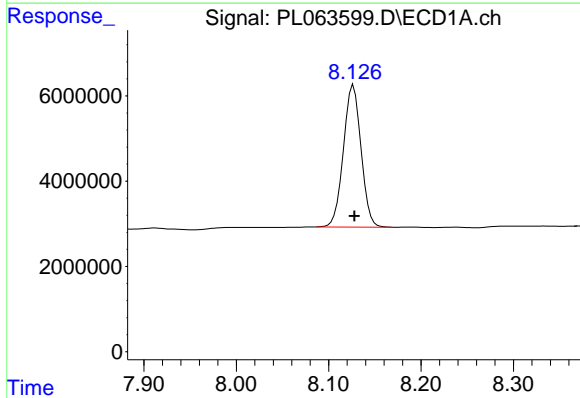


#1 Tetrachloro-m-xylene  
R.T.: 3.410 min  
Delta R.T.: 0.000 min  
Response: 41810863  
Conc: 24.57 ng/ml

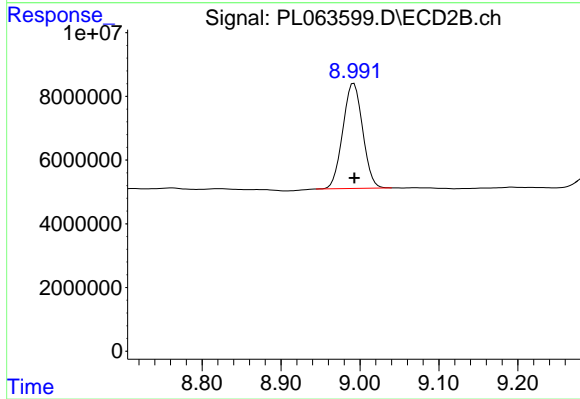
Instrument :  
ECD\_L  
ClientSampled :  
I.BLK



#1 Tetrachloro-m-xylene  
R.T.: 3.950 min  
Delta R.T.: 0.000 min  
Response: 75237730  
Conc: 24.01 ng/ml



#28 Decachlorobiphenyl  
R.T.: 8.127 min  
Delta R.T.: -0.001 min  
Response: 44178739  
Conc: 21.94 ng/ml



#28 Decachlorobiphenyl  
R.T.: 8.992 min  
Delta R.T.: 0.000 min  
Response: 57742335  
Conc: 22.93 ng/ml