

Data Path : Z:\pestpcbsrv\HPCHEM1\ECD\_L\Data\PL121420\  
 Data File : PL063600.D  
 Signal(s) : Signal #1: ECD1A.ch Signal #2: ECD2B.ch  
 Acq On : 14 Dec 2020 18:57  
 Operator : DD\AJ  
 Sample : PEM  
 Misc :  
 ALS Vial : 3 Sample Multiplier: 1

Instrument :  
 ECD\_L  
 ClientSampled :  
 PEM

Manual Integrations  
 APPROVED

Ankita  
 12/15/2020 3:59:14 PM

Integration File signal 1: autoint1.e  
 Integration File signal 2: autoint2.e  
 Quant Time: Dec 15 02:49:01 2020  
 Quant Method : Z:\pestpcbsrv\HPCHEM1\ECD\_L\methods\PL121020.M  
 Quant Title : GC Extractables  
 QLast Update : Thu Dec 10 15:57:40 2020  
 Response via : Initial Calibration  
 Integrator: ChemStation

Volume Inj. : 1 µl  
 Signal #1 Phase : ZB-MR2 Signal #2 Phase: ZB-MR1  
 Signal #1 Info : 30M x 0.32mm x0.2 Signal #2 Info : 30M x 0.32mm x0.5µm

Compound	RT#1	RT#2	Resp#1	Resp#2	ng/ml	ng/ml
-----						
System Monitoring Compounds						
1) SA Tetrachlo...	3.429f	3.950	38003693	67949983	22.333m	21.680
28) SA Decachlor...	8.145f	8.992	42607730	56499639	21.157m	22.435
Target Compounds						
2) A alpha-BHC	3.862f	4.337	24909994	46890772	9.938	9.906
3) MA gamma-BHC...	4.140f	4.620	22086898	43760234	9.691m	9.815
6) B beta-BHC	4.390f	4.792	11442607	22318536	11.785m	11.235
12) B 4,4'-DDE	5.568f	6.271	253776	751433	0.149m	0.215m#
14) MA Endrin	5.953f	6.643	103.1E6	156.6E6	61.402	53.538
16) A 4,4'-DDD	6.084f	6.773	823694	1338886	0.549m	0.494m
17) MA 4,4'-DDT	6.321f	7.068	159.9E6	283.6E6	116.555	110.930
18) B Endrin al...	6.397f	6.978	2159472	260694	1.409m	0.102m#
20) A Methoxychlor	6.865f	7.527	232.1E6	401.0E6	260.830	287.493
-----						

(f)=RT Delta > 1/2 Window (#)=Amounts differ by > 25% (m)=manual int.

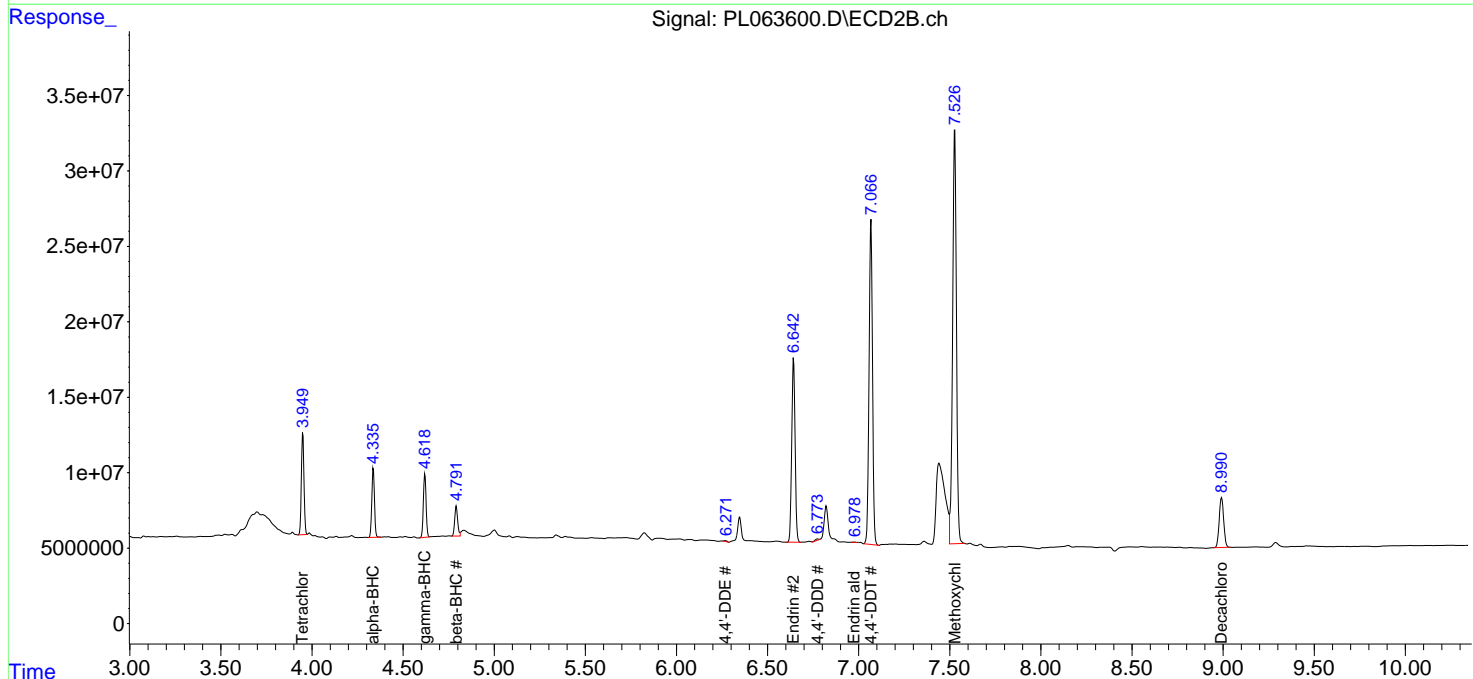
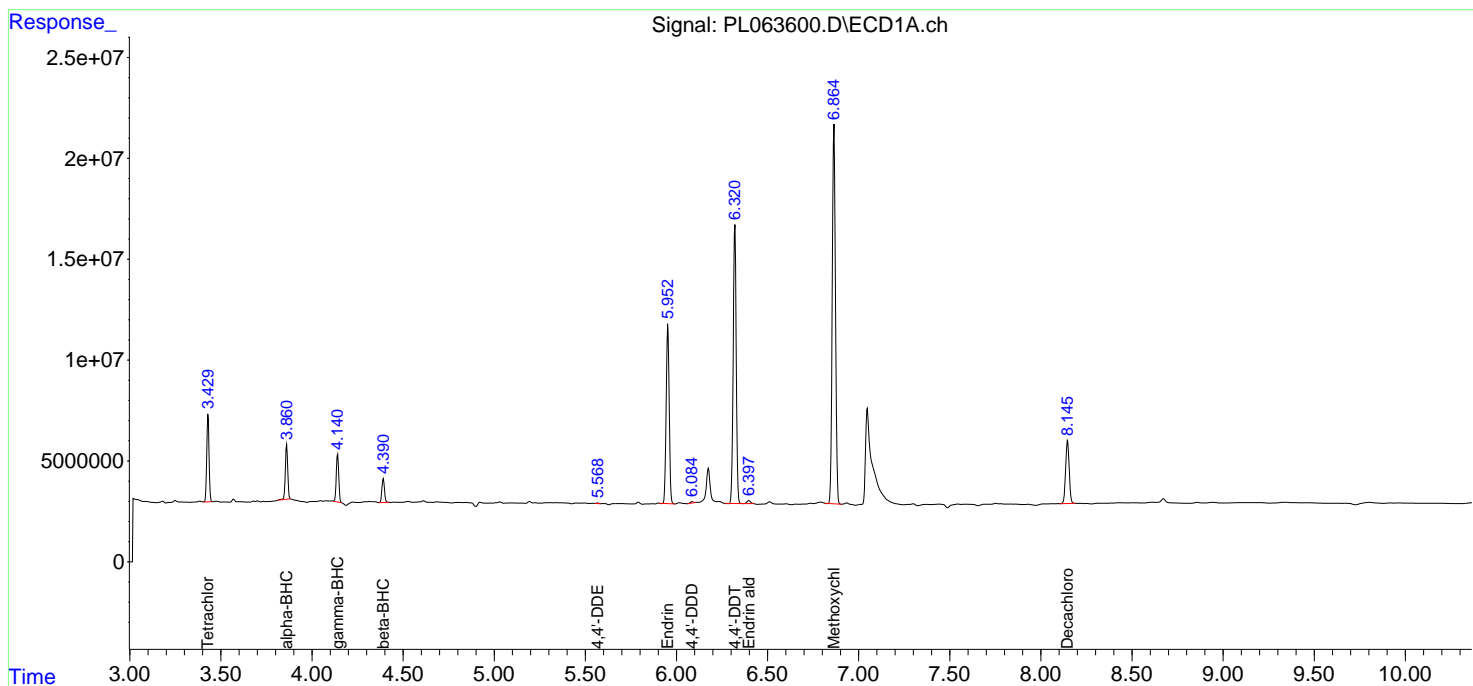
Data Path : Z:\pestpcbsrv\HPCHEM1\ECD\_L\Data\PL121420\  
 Data File : PL063600.D  
 Signal(s) : Signal #1: ECD1A.ch Signal #2: ECD2B.ch  
 Acq On : 14 Dec 2020 18:57  
 Operator : DD\AJ  
 Sample : PEM  
 Misc :  
 ALS Vial : 3 Sample Multiplier: 1

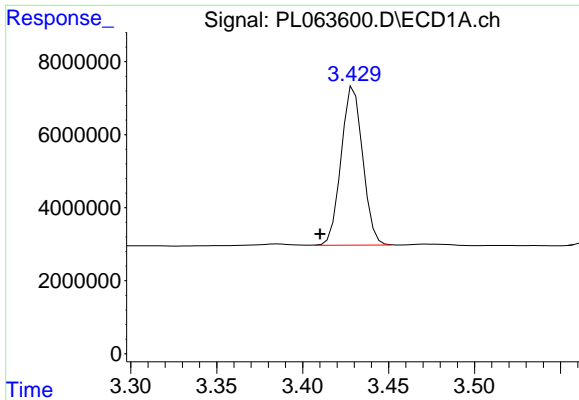
Instrument :  
 ECD\_L  
 ClientSampled :  
 PEM

Manual Integrations  
**APPROVED**  
 Ankita  
 12/15/2020 3:59:14 PM

Integration File signal 1: autoint1.e  
 Integration File signal 2: autoint2.e  
 Quant Time: Dec 15 02:49:01 2020  
 Quant Method : Z:\pestpcbsrv\HPCHEM1\ECD\_L\methods\PL121020.M  
 Quant Title : GC Extractables  
 QLast Update : Thu Dec 10 15:57:40 2020  
 Response via : Initial Calibration  
 Integrator: ChemStation

Volume Inj. : 1 µl  
 Signal #1 Phase : ZB-MR2 Signal #2 Phase: ZB-MR1  
 Signal #1 Info : 30M x 0.32mm x0.2 Signal #2 Info : 30M x 0.32mm x0.5µm

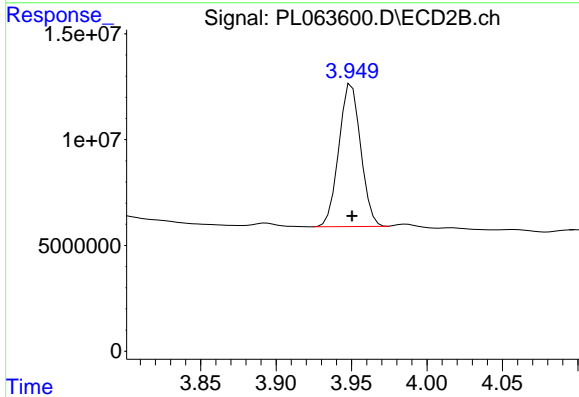




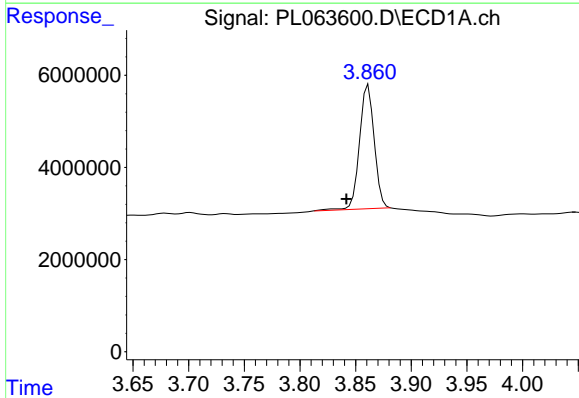
#1 Tetrachloro-m-xylene  
 R.T.: 3.429 min  
 Delta R.T.: 0.019 min  
 Response: 38003693  
 Conc: 22.33 ng/ml m

Instrument :  
 ECD\_L  
 ClientSampled :  
 PEM

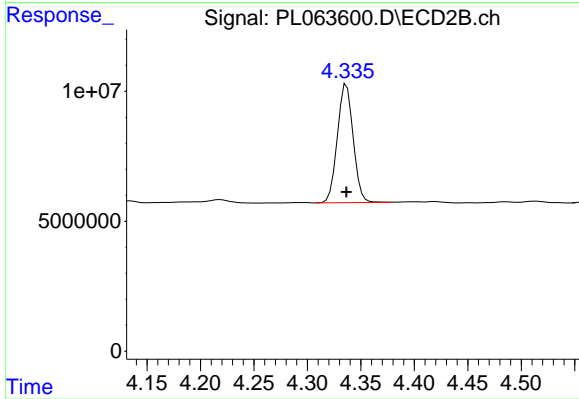
Manual Integrations  
 APPROVED  
 Ankita  
 12/15/2020 3:59:14 PM



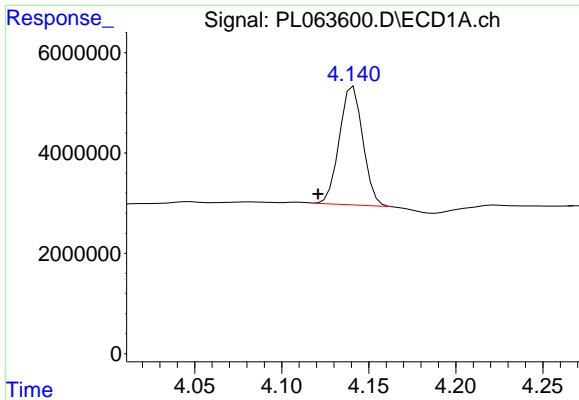
#1 Tetrachloro-m-xylene  
 R.T.: 3.950 min  
 Delta R.T.: 0.000 min  
 Response: 67949983  
 Conc: 21.68 ng/ml



#2 alpha-BHC  
 R.T.: 3.862 min  
 Delta R.T.: 0.020 min  
 Response: 24909994  
 Conc: 9.94 ng/ml



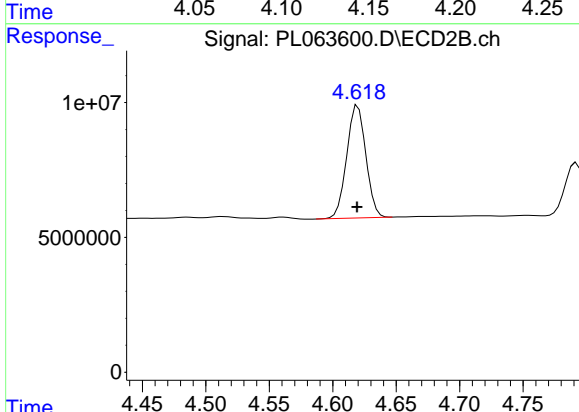
#2 alpha-BHC  
 R.T.: 4.337 min  
 Delta R.T.: 0.000 min  
 Response: 46890772  
 Conc: 9.91 ng/ml



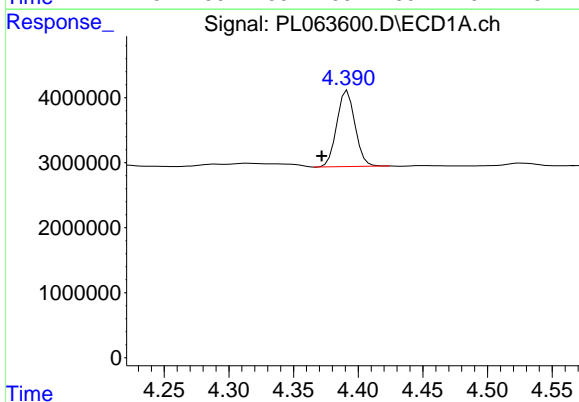
#3 gamma-BHC (Lindane)  
R.T.: 4.140 min  
Delta R.T.: 0.019 min  
Response: 22086898  
Conc: 9.69 ng/ml m

Instrument :  
ECD\_L  
ClientSampled :  
PEM

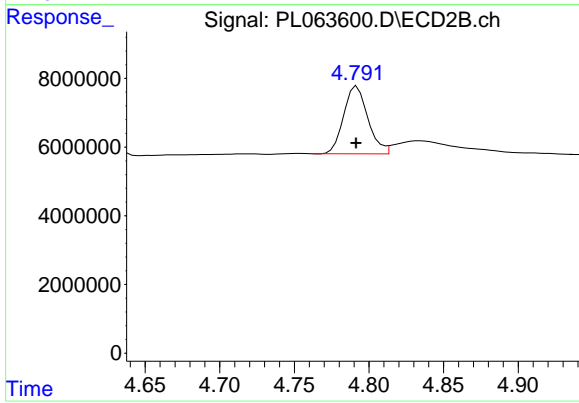
Manual Integrations  
APPROVED  
Ankita  
12/15/2020 3:59:14 PM



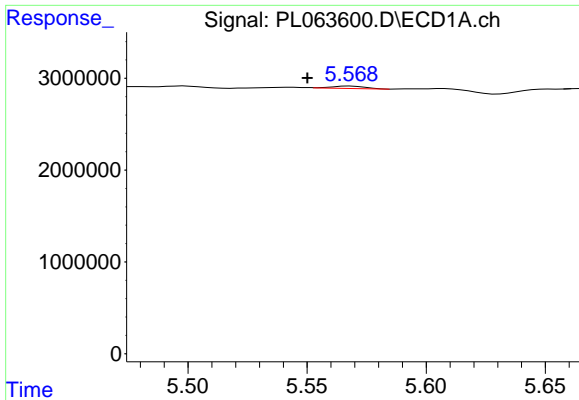
#3 gamma-BHC (Lindane)  
R.T.: 4.620 min  
Delta R.T.: 0.000 min  
Response: 43760234  
Conc: 9.82 ng/ml



#6 beta-BHC  
R.T.: 4.390 min  
Delta R.T.: 0.019 min  
Response: 11442607  
Conc: 11.78 ng/ml m



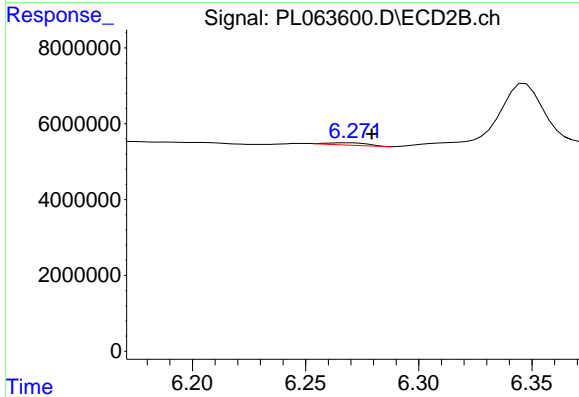
#6 beta-BHC  
R.T.: 4.792 min  
Delta R.T.: 0.000 min  
Response: 22318536  
Conc: 11.24 ng/ml



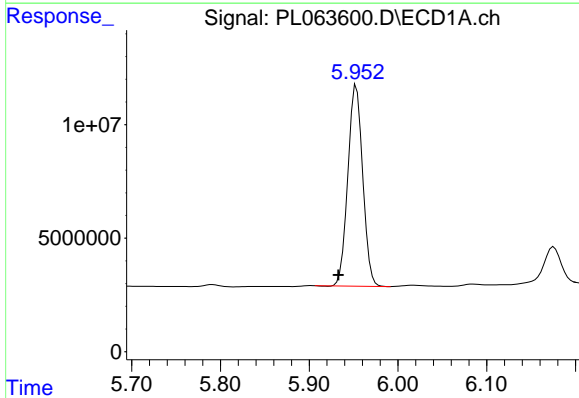
#12 4,4'-DDE  
 R.T.: 5.568 min  
 Delta R.T.: 0.018 min  
 Response: 253776  
 Conc: 0.15 ng/ml m

**Instrument :**  
 ECD\_L  
**ClientSampled :**  
 PEM

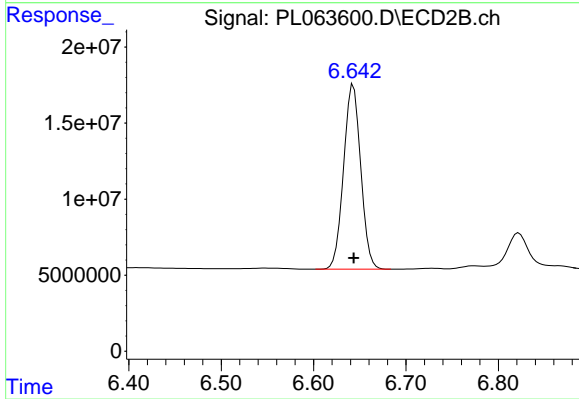
**Manual Integrations**  
**APPROVED**  
 Ankita  
 12/15/2020 3:59:14 PM



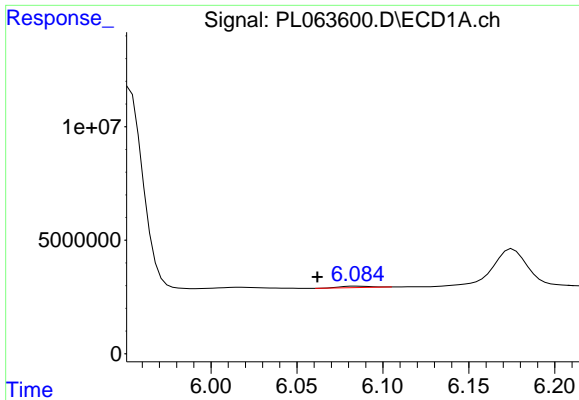
#12 4,4'-DDE  
 R.T.: 6.271 min  
 Delta R.T.: -0.008 min  
 Response: 751433  
 Conc: 0.21 ng/ml m



#14 Endrin  
 R.T.: 5.953 min  
 Delta R.T.: 0.020 min  
 Response: 103056616  
 Conc: 61.40 ng/ml



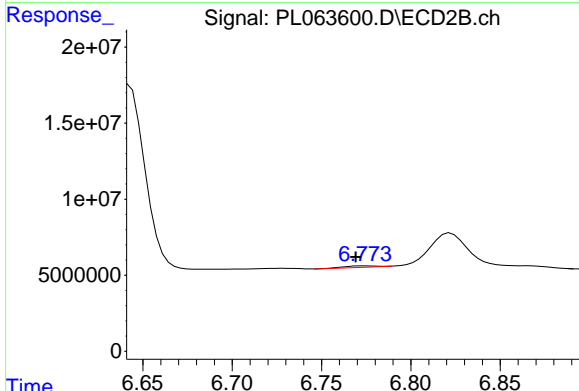
#14 Endrin  
 R.T.: 6.643 min  
 Delta R.T.: 0.000 min  
 Response: 156600495  
 Conc: 53.54 ng/ml



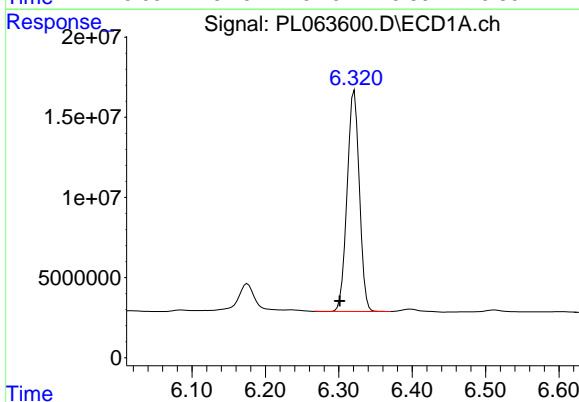
#16 4,4'-DDD  
 R.T.: 6.084 min  
 Delta R.T.: 0.022 min  
 Response: 823694  
 Conc: 0.55 ng/ml m

**Instrument :**  
 ECD\_L  
**ClientSampled :**  
 PEM

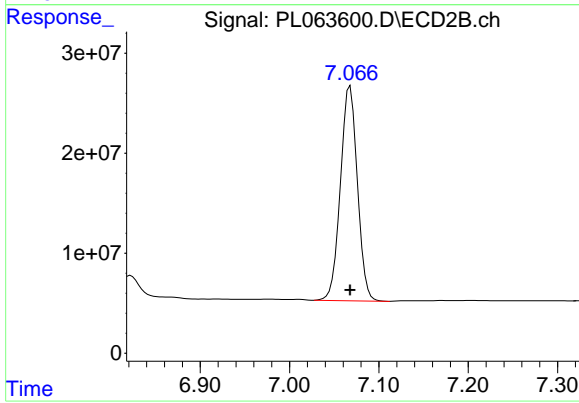
**Manual Integrations**  
**APPROVED**  
 Ankita  
 12/15/2020 3:59:14 PM



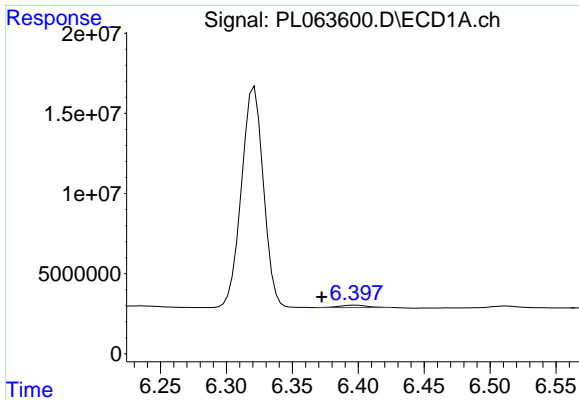
#16 4,4'-DDD  
 R.T.: 6.773 min  
 Delta R.T.: 0.004 min  
 Response: 1338886  
 Conc: 0.49 ng/ml m



#17 4,4'-DDT  
 R.T.: 6.321 min  
 Delta R.T.: 0.020 min  
 Response: 159942040  
 Conc: 116.56 ng/ml



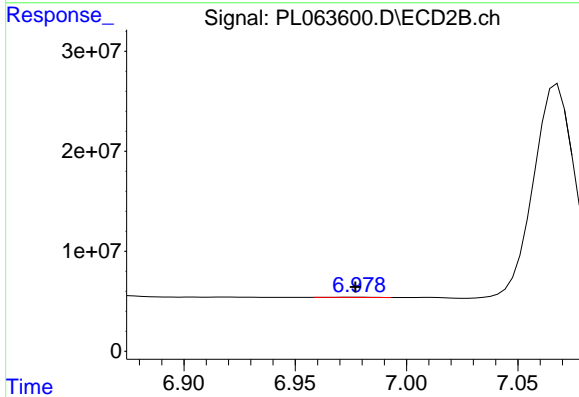
#17 4,4'-DDT  
 R.T.: 7.068 min  
 Delta R.T.: 0.000 min  
 Response: 283632937  
 Conc: 110.93 ng/ml



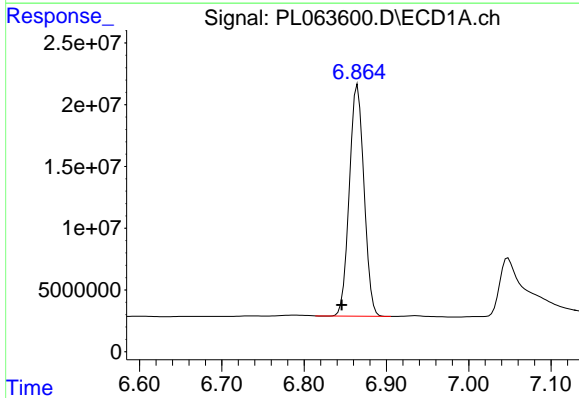
#18 Endrin aldehyde  
 R.T.: 6.397 min  
 Delta R.T.: 0.024 min  
 Response: 2159472  
 Conc: 1.41 ng/ml m

Instrument :  
 ECD\_L  
 ClientSampled :  
 PEM

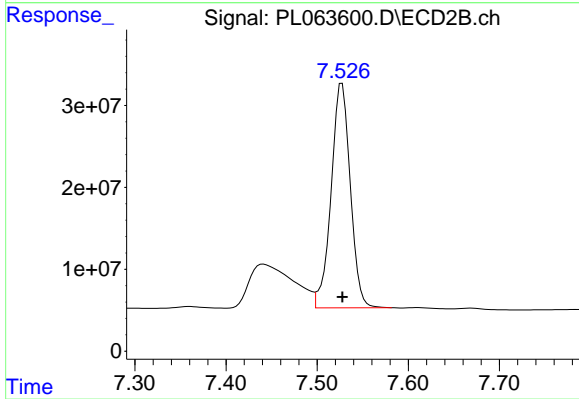
Manual Integrations  
 APPROVED  
 Ankita  
 12/15/2020 3:59:14 PM



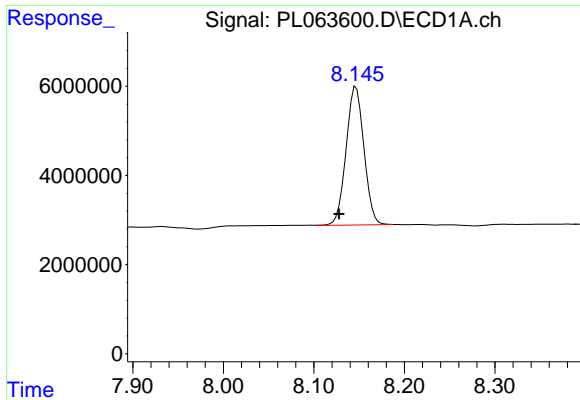
#18 Endrin aldehyde  
 R.T.: 6.978 min  
 Delta R.T.: 0.000 min  
 Response: 260694  
 Conc: 0.10 ng/ml m



#20 Methoxychlor  
 R.T.: 6.865 min  
 Delta R.T.: 0.019 min  
 Response: 232091673  
 Conc: 260.83 ng/ml



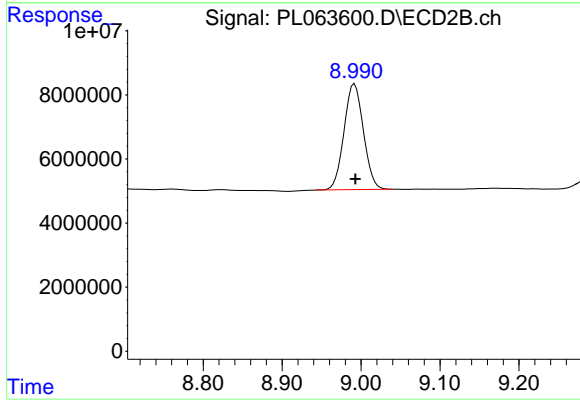
#20 Methoxychlor  
 R.T.: 7.527 min  
 Delta R.T.: 0.000 min  
 Response: 400954179  
 Conc: 287.49 ng/ml



#28 Decachlorobiphenyl  
R.T.: 8.145 min  
Delta R.T.: 0.017 min  
Response: 42607730  
Conc: 21.16 ng/ml m

Instrument :  
ECD\_L  
ClientSampled :  
PEM

Manual Integrations  
APPROVED  
Ankita  
12/15/2020 3:59:14 PM



#28 Decachlorobiphenyl  
R.T.: 8.992 min  
Delta R.T.: -0.001 min  
Response: 56499639  
Conc: 22.44 ng/ml