

Data Path : Z:\pestpcbsrv\HPCHEM1\ECD_L\Data\PL121420\
 Data File : PL063607.D
 Signal(s) : Signal #1: ECD1A.ch Signal #2: ECD2B.ch
 Acq On : 14 Dec 2020 21:11
 Operator : DD\AJ
 Sample : I.BLK
 Misc :
 ALS Vial : 2 Sample Multiplier: 1

Instrument :
 ECD_L
 ClientSampleId :
 I.BLK

Integration File signal 1: autoint1.e
 Integration File signal 2: autoint2.e
 Quant Time: Dec 15 02:51:22 2020
 Quant Method : Z:\pestpcbsrv\HPCHEM1\ECD_L\methods\PL121020.M
 Quant Title : GC Extractables
 QLast Update : Thu Dec 10 15:57:40 2020
 Response via : Initial Calibration
 Integrator: ChemStation

Volume Inj. : 1 µl
 Signal #1 Phase : ZB-MR2 Signal #2 Phase: ZB-MR1
 Signal #1 Info : 30M x 0.32mm x0.2 Signal #2 Info : 30M x 0.32mm x0.5µm

| Compound | RT#1 | RT#2 | Resp#1 | Resp#2 | ng/ml | ng/ml |
|-----------------------------|-------|-------|----------|----------|--------|--------|
| ----- | | | | | | |
| System Monitoring Compounds | | | | | | |
| 1) SA Tetrachlo... | 3.410 | 3.950 | 39867917 | 71194487 | 23.428 | 22.716 |
| 28) SA Decachlor... | 8.126 | 8.991 | 43970634 | 59537593 | 21.834 | 23.642 |

Target Compounds

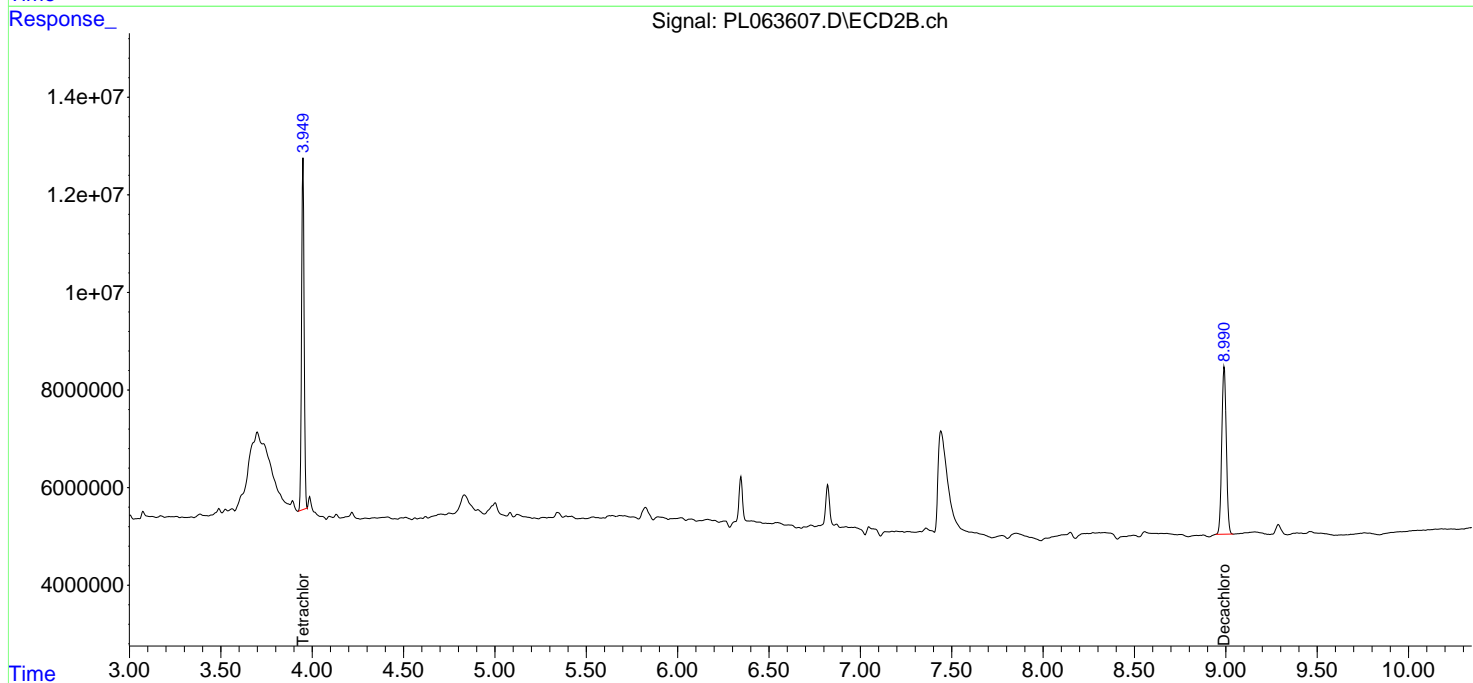
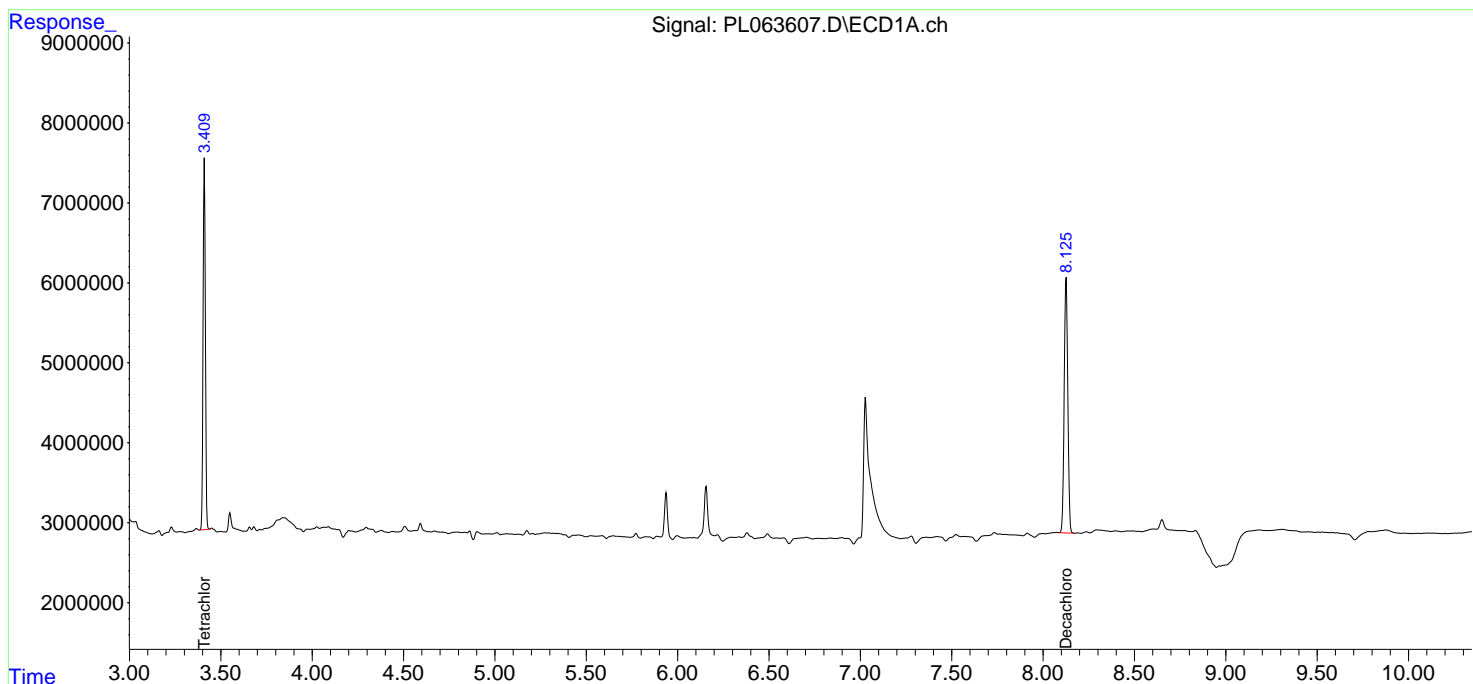
(f)=RT Delta > 1/2 Window (#)=Amounts differ by > 25% (m)=manual int.

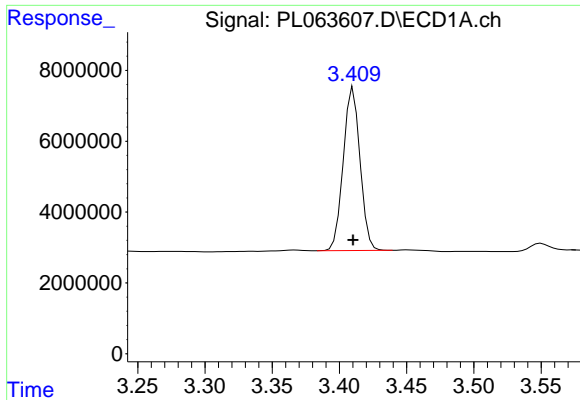
Data Path : Z:\pestpcbsrv\HPCHEM1\ECD_L\Data\PL121420\
 Data File : PL063607.D
 Signal(s) : Signal #1: ECD1A.ch Signal #2: ECD2B.ch
 Acq On : 14 Dec 2020 21:11
 Operator : DD\AJ
 Sample : I.BLK
 Misc :
 ALS Vial : 2 Sample Multiplier: 1

Instrument :
 ECD_L
 ClientSampled :
 I.BLK

Integration File signal 1: autoint1.e
 Integration File signal 2: autoint2.e
 Quant Time: Dec 15 02:51:22 2020
 Quant Method : Z:\pestpcbsrv\HPCHEM1\ECD_L\methods\PL121020.M
 Quant Title : GC Extractables
 QLast Update : Thu Dec 10 15:57:40 2020
 Response via : Initial Calibration
 Integrator: ChemStation

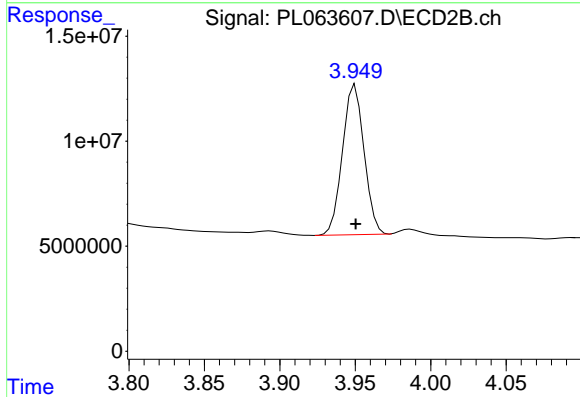
Volume Inj. : 1 µl
 Signal #1 Phase : ZB-MR2 Signal #2 Phase: ZB-MR1
 Signal #1 Info : 30M x 0.32mm x0.2 Signal #2 Info : 30M x 0.32mm x0.5µm



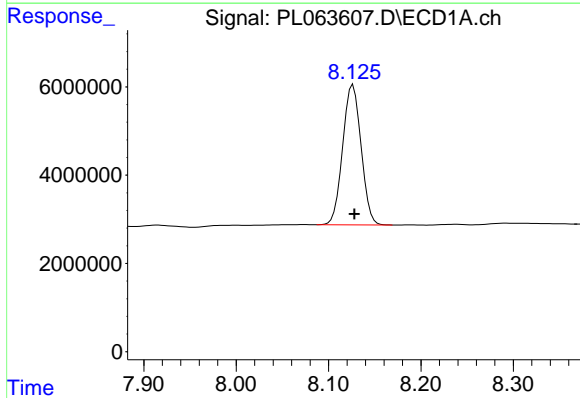


#1 Tetrachloro-m-xylene
 R.T.: 3.410 min
 Delta R.T.: 0.000 min
 Response: 39867917
 Conc: 23.43 ng/ml

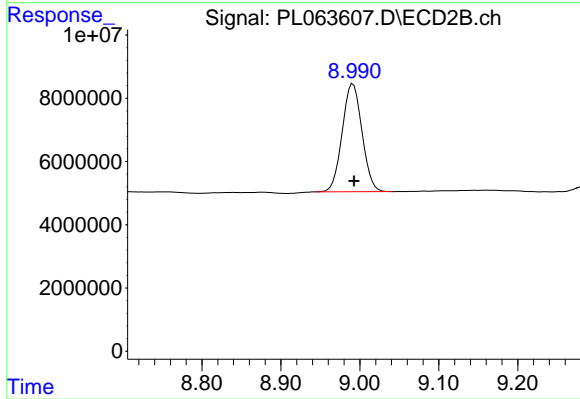
Instrument :
 ECD_L
 ClientSampleId :
 I.BLK



#1 Tetrachloro-m-xylene
 R.T.: 3.950 min
 Delta R.T.: 0.000 min
 Response: 71194487
 Conc: 22.72 ng/ml



#28 Decachlorobiphenyl
 R.T.: 8.126 min
 Delta R.T.: -0.002 min
 Response: 43970634
 Conc: 21.83 ng/ml



#28 Decachlorobiphenyl
 R.T.: 8.991 min
 Delta R.T.: -0.002 min
 Response: 59537593
 Conc: 23.64 ng/ml