

Data Path : Z:\pestpcbsrv\HPCHEM1\ECD_L\Data\PL121522\
 Data File : PL079723.D
 Signal(s) : Signal #1: ECD1A.ch Signal #2: ECD2B.ch
 Acq On : 15 Dec 2022 08:46
 Operator : AR\AJ
 Sample : I.BLK
 Misc :
 ALS Vial : 2 Sample Multiplier: 1

Instrument :
 ECD_L
 ClientSampleId :
 I.BLK

Integration File signal 1: autoint1.e
 Integration File signal 2: autoint2.e
 Quant Time: Dec 15 20:56:37 2022
 Quant Method : Z:\pestpcbsrv\HPCHEM1\ECD_L\methods\PL112322.M
 Quant Title : GC Extractables
 QLast Update : Thu Nov 24 00:09:49 2022
 Response via : Initial Calibration
 Integrator: ChemStation

Volume Inj. : 1 µl
 Signal #1 Phase : ZB-MR2 Signal #2 Phase: ZB-MR1
 Signal #1 Info : 30M x 0.32mm x0.2 Signal #2 Info : 30M x 0.32mm x0.5µm

Compound	RT#1	RT#2	Resp#1	Resp#2	ng/ml	ng/ml

System Monitoring Compounds						
1) SA Tetrachlo...	3.317	2.563	52211936	61196834	23.112	22.482
28) SA Decachlor...	8.771	7.633	42275934	47882423	21.768	20.382

Target Compounds

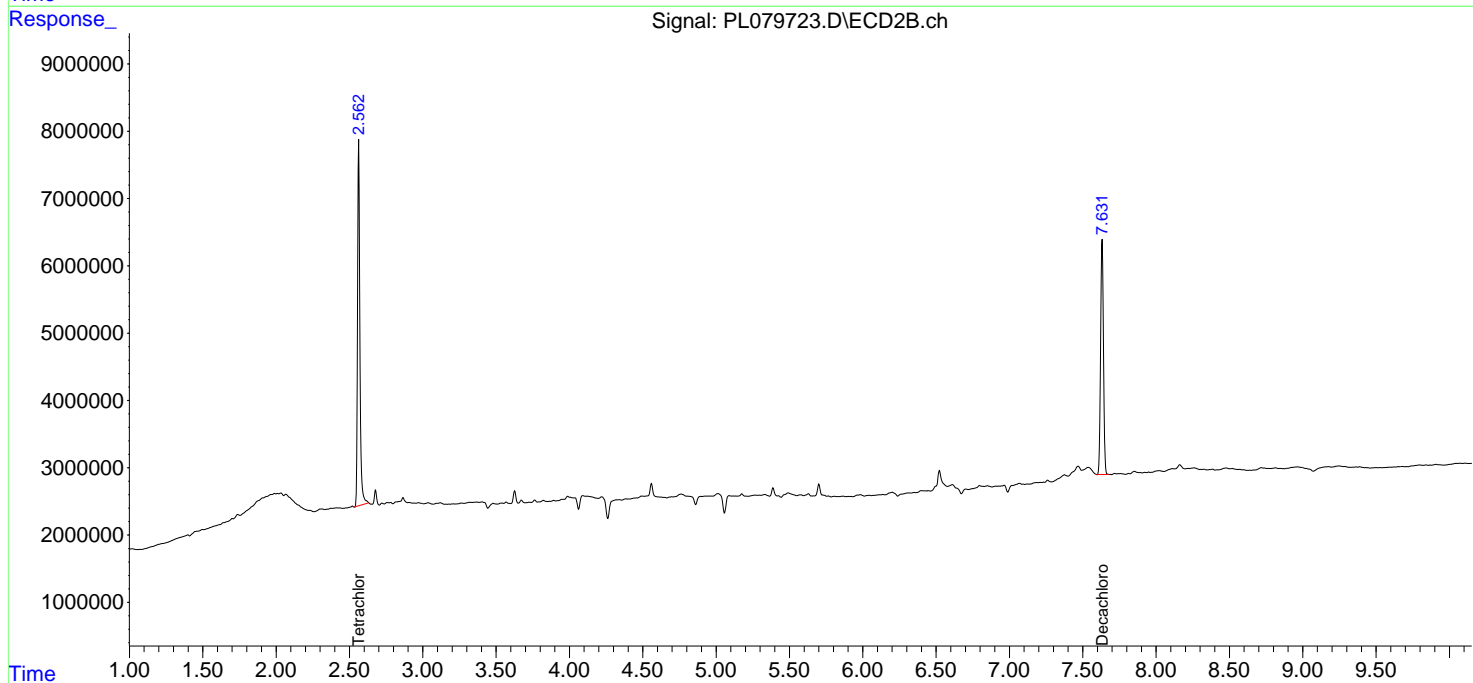
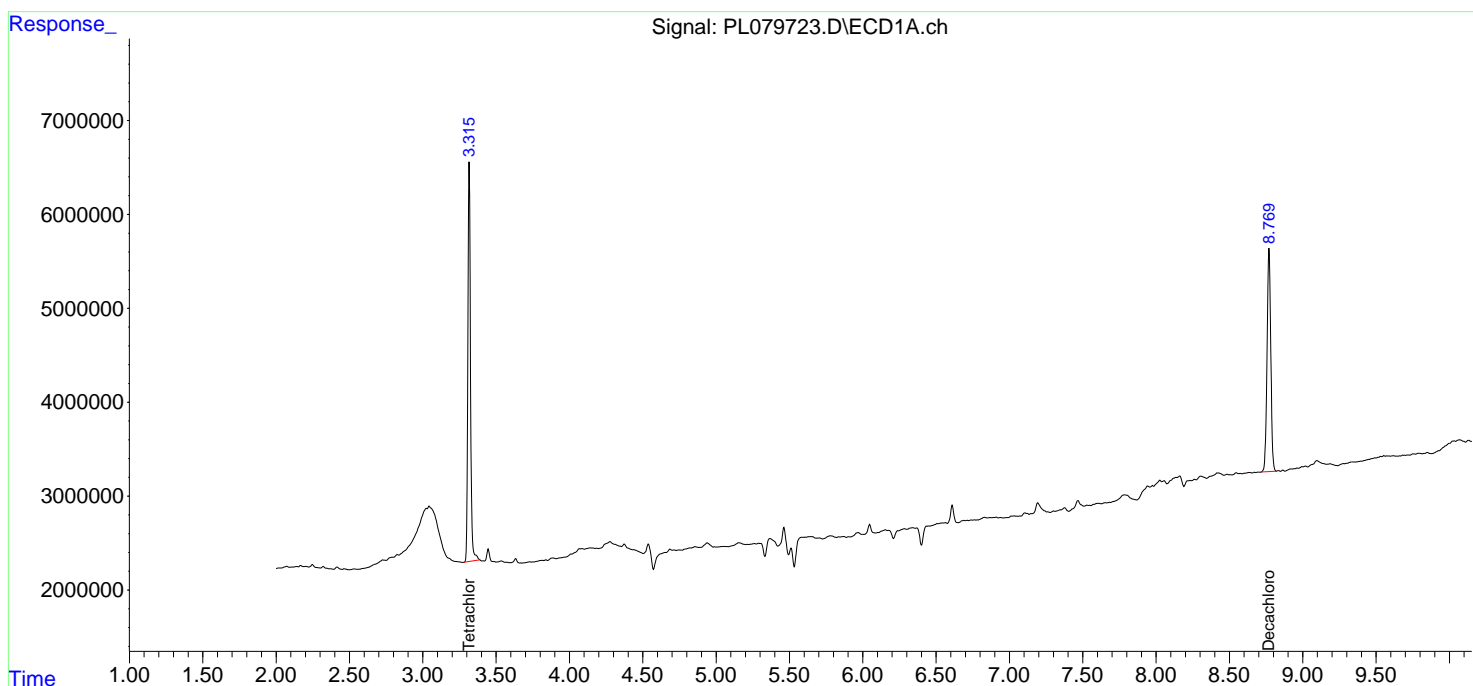
(f)=RT Delta > 1/2 Window (#)=Amounts differ by > 25% (m)=manual int.

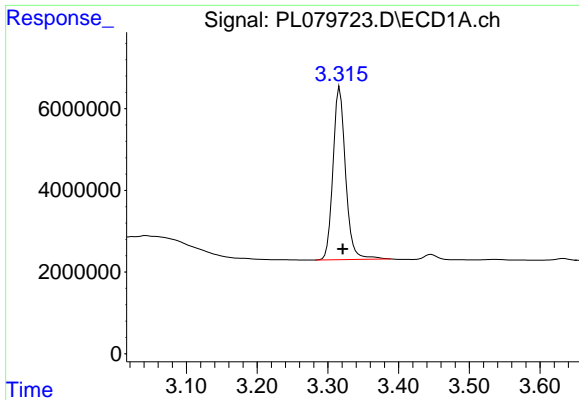
Data Path : Z:\pestpcbsrv\HPCHEM1\ECD_L\Data\PL121522\
 Data File : PL079723.D
 Signal(s) : Signal #1: ECD1A.ch Signal #2: ECD2B.ch
 Acq On : 15 Dec 2022 08:46
 Operator : AR\AJ
 Sample : I.BLK
 Misc :
 ALS Vial : 2 Sample Multiplier: 1

Instrument :
 ECD_L
 ClientSampleId :
 I.BLK

Integration File signal 1: autoint1.e
 Integration File signal 2: autoint2.e
 Quant Time: Dec 15 20:56:37 2022
 Quant Method : Z:\pestpcbsrv\HPCHEM1\ECD_L\methods\PL112322.M
 Quant Title : GC Extractables
 QLast Update : Thu Nov 24 00:09:49 2022
 Response via : Initial Calibration
 Integrator: ChemStation

Volume Inj. : 1 µl
 Signal #1 Phase : ZB-MR2 Signal #2 Phase: ZB-MR1
 Signal #1 Info : 30M x 0.32mm x0.2 Signal #2 Info : 30M x 0.32mm x0.5µm

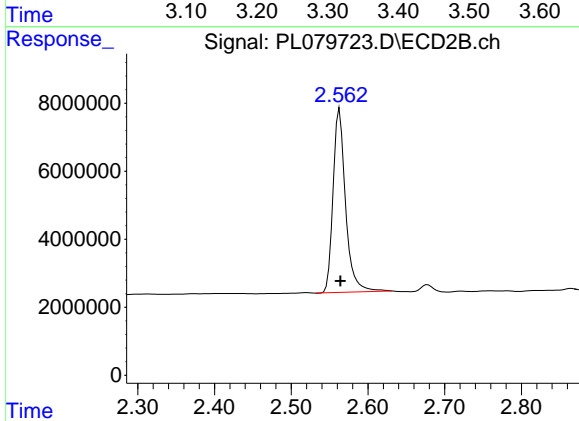




#1 Tetrachloro-m-xylene

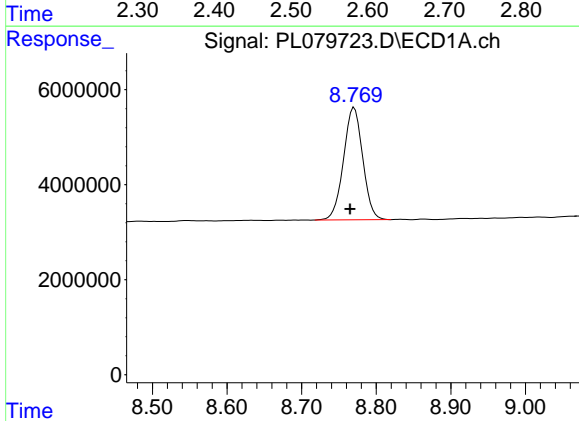
R.T.: 3.317 min
Delta R.T.: -0.004 min
Response: 52211936
Conc: 23.11 ng/ml

Instrument :
ECD_L
ClientSampleId :
I.BLK



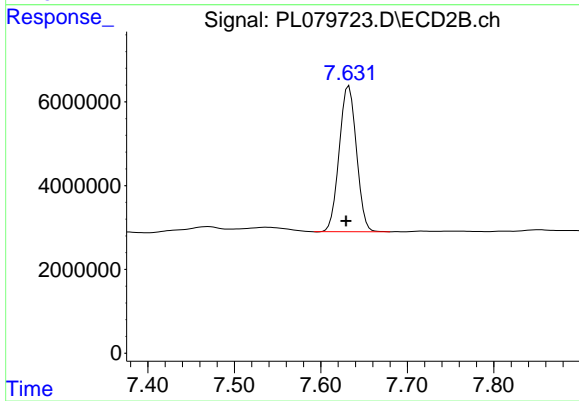
#1 Tetrachloro-m-xylene

R.T.: 2.563 min
Delta R.T.: -0.001 min
Response: 61196834
Conc: 22.48 ng/ml



#28 Decachlorobiphenyl

R.T.: 8.771 min
Delta R.T.: 0.006 min
Response: 42275934
Conc: 21.77 ng/ml



#28 Decachlorobiphenyl

R.T.: 7.633 min
Delta R.T.: 0.003 min
Response: 47882423
Conc: 20.38 ng/ml