

Data Path : Z:\pestpcbsrv\HPCHEM1\ECD_L\Data\PL121619\
 Data File : PL054990.D
 Signal(s) : Signal #1: ECD1A.ch Signal #2: ECD2B.ch
 Acq On : 16 Dec 2019 14:27
 Operator : SG\AJ
 Sample : PB125481BS
 Misc :
 ALS Vial : 7 Sample Multiplier: 1

Instrument :
 ECD_L
 ClientSampleId :
 PB125481BS

Integration File signal 1: autoint1.e
 Integration File signal 2: autoint2.e
 Quant Time: Dec 17 02:59:17 2019
 Quant Method : Z:\pestpcbsrv\HPCHEM1\ECD_L\methods\PL112619.M
 Quant Title : GC Extractables
 QLast Update : Wed Nov 27 01:19:55 2019
 Response via : Initial Calibration
 Integrator: ChemStation

Volume Inj. : 1 µl
 Signal #1 Phase : ZB-MR2 Signal #2 Phase: ZB-MR1
 Signal #1 Info : 30M x 0.32mm x0.2 Signal #2 Info : 30M x 0.32mm x0.5µm

	Compound	RT#1	RT#2	Resp#1	Resp#2	ng/ml	ng/ml

System Monitoring Compounds							
1)	SA Tetrachlo...	3.539	4.049	211.4E6	54219321	18.168	21.247
28)	SA Decachlor...	8.317	9.148	178.3E6	43819625	18.622	18.278
Target Compounds							
2)	A alpha-BHC	3.982	4.441	969.3E6	211.4E6	51.060	59.664
3)	MA gamma-BHC...	4.268	4.726	883.8E6	193.2E6	51.850	59.268
4)	MA Heptachlor	4.574	5.235	919.4E6	173.4E6	52.137	57.451
5)	MB Aldrin	4.825	5.542	860.0E6	165.7E6	52.762	59.472
6)	B beta-BHC	4.519	4.897	371.5E6	83330473	50.088	59.174
7)	B delta-BHC	4.727	5.115	811.4E6	155.7E6	49.915	58.387
8)	B Heptachlo...	5.270	5.928	855.6E6	161.0E6	56.564	64.429
9)	A Endosulfan I	5.611	6.286	730.2E6	136.6E6	53.544	55.213
10)	B gamma-Chl...	5.498	6.162	863.9E6	152.5E6	56.972	57.893
11)	B alpha-Chl...	5.557	6.235	776.9E6	149.1E6	52.688	56.775
12)	B 4,4'-DDE	5.720	6.392	652.6E6	137.8E6	49.049	55.655
13)	MA Dieldrin	5.856	6.543	753.2E6	142.9E6	53.115	56.124
14)	MA Endrin	6.114	6.762	694.1E6	113.7E6	54.509	51.342
15)	B Endosulfa...	6.387	6.971	617.0E6	124.2E6	50.990	52.833
16)	A 4,4'-DDD	6.237	6.883	508.3E6	106.6E6	52.036	55.507
17)	MA 4,4'-DDT	6.478	7.183	543.4E6	108.2E6	51.866	54.630
18)	B Endrin al...	6.556	7.096	492.7E6	103.3E6	49.749	52.681
19)	B Endosulfa...	6.769	7.320	539.3E6	112.4E6	50.357	52.986
20)	A Methoxychlor	7.024	7.642	266.6E6	48033550	53.194	42.109
21)	B Endrin ke...	7.263	7.794	588.5E6	121.7E6	54.144	54.057
22)	Mirex	7.454	8.251	457.2E6	96678315	56.317	55.938
23)	Chlordane-1	4.448f	0.000	3235208	0	8.198	N.D. #
24)	Chlordane-2	0.000	5.542f	0	165.7E6	N.D.	1849.031 #
25)	Chlordane-3	5.498	6.162	863.9E6	152.5E6	672.778	491.337 #
26)	Chlordane-4	5.557	6.235	776.9E6	149.1E6	735.533	396.165 #
27)	Chlordane-5	6.387	0.000	617.0E6	0	1638.717	N.D. #

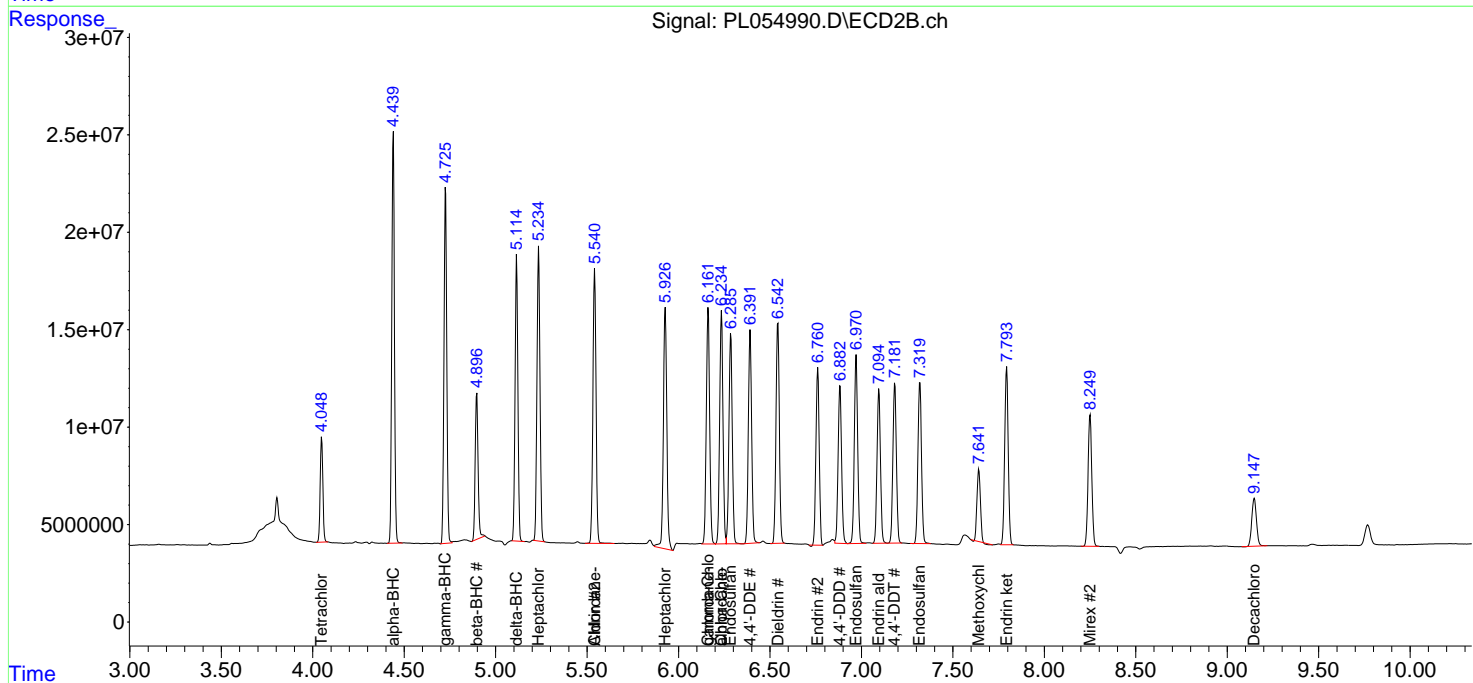
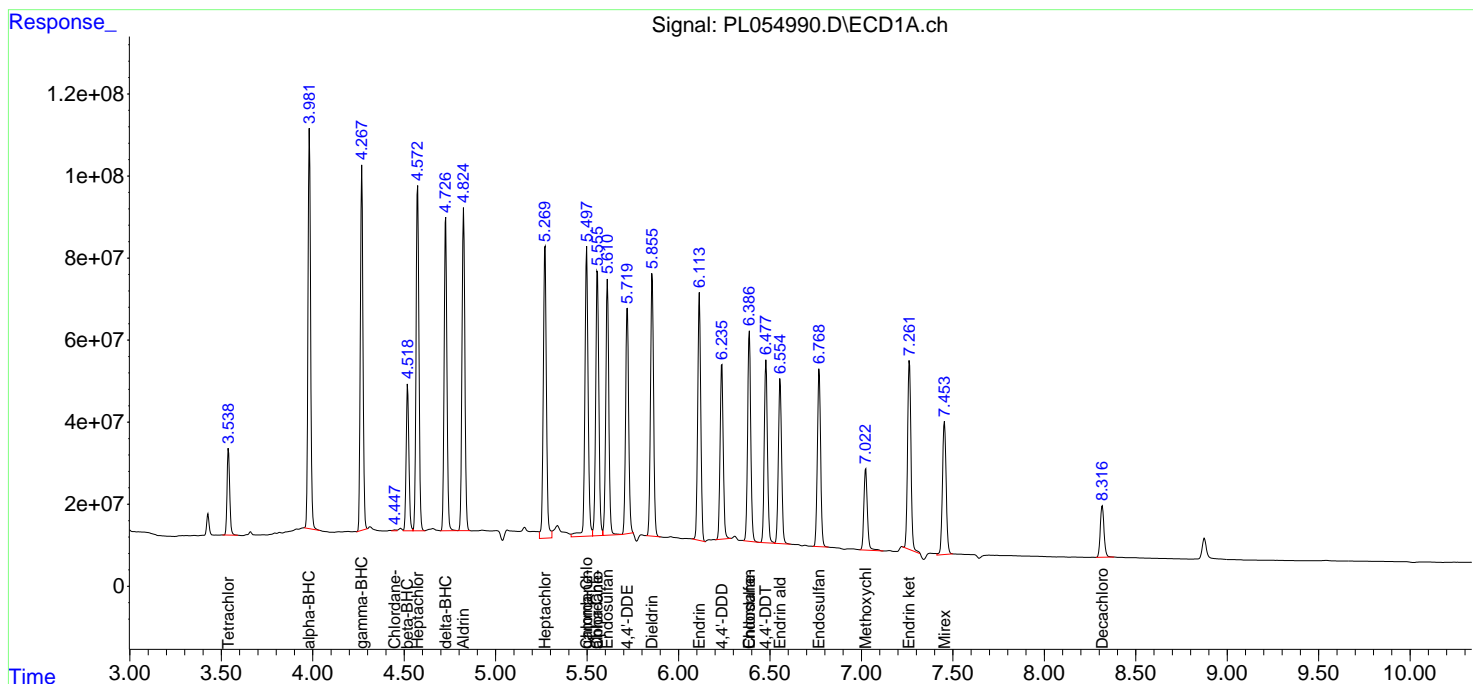
(f)=RT Delta > 1/2 Window (#)=Amounts differ by > 25% (m)=manual int.

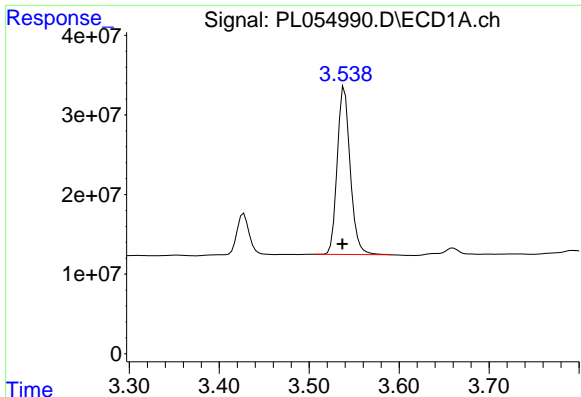
Data Path : Z:\pestpcbsrv\HPCHEM1\ECD_L\Data\PL121619\
 Data File : PL054990.D
 Signal(s) : Signal #1: ECD1A.ch Signal #2: ECD2B.ch
 Acq On : 16 Dec 2019 14:27
 Operator : SG\AJ
 Sample : PB125481BS
 Misc :
 ALS Vial : 7 Sample Multiplier: 1

Instrument :
 ECD_L
 ClientSampled :
 PB125481BS

Integration File signal 1: autoint1.e
 Integration File signal 2: autoint2.e
 Quant Time: Dec 17 02:59:17 2019
 Quant Method : Z:\pestpcbsrv\HPCHEM1\ECD_L\methods\PL112619.M
 Quant Title : GC Extractables
 QLast Update : Wed Nov 27 01:19:55 2019
 Response via : Initial Calibration
 Integrator: ChemStation

Volume Inj. : 1 µl
 Signal #1 Phase : ZB-MR2 Signal #2 Phase: ZB-MR1
 Signal #1 Info : 30M x 0.32mm x0.2 Signal #2 Info : 30M x 0.32mm x0.5µm

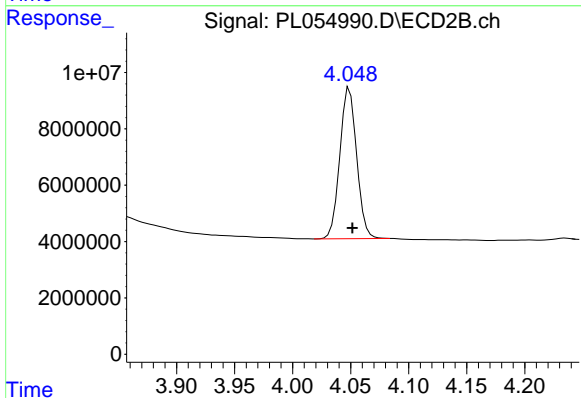




#1 Tetrachloro-m-xylene

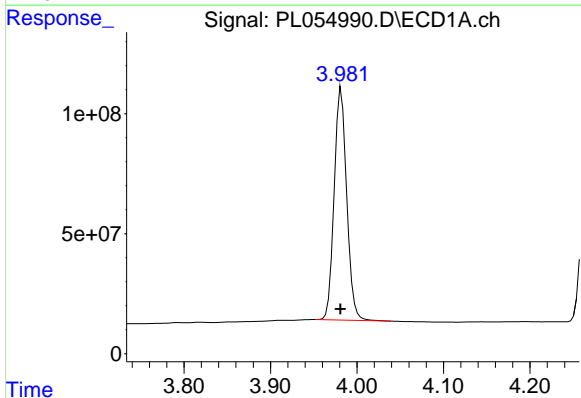
R.T.: 3.539 min
 Delta R.T.: 0.002 min
 Response: 211370440
 Conc: 18.17 ng/ml

Instrument :
 ECD_L
 ClientSampleId :
 PB125481BS



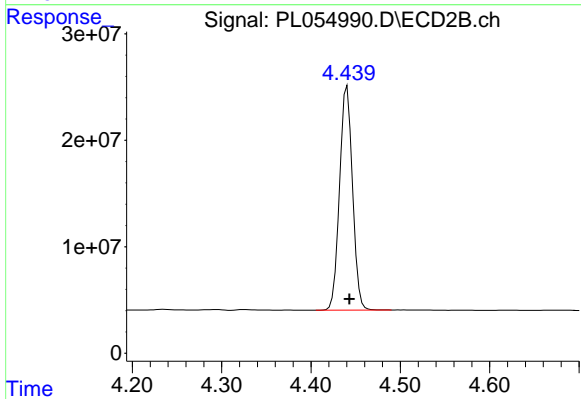
#1 Tetrachloro-m-xylene

R.T.: 4.049 min
 Delta R.T.: -0.002 min
 Response: 54219321
 Conc: 21.25 ng/ml



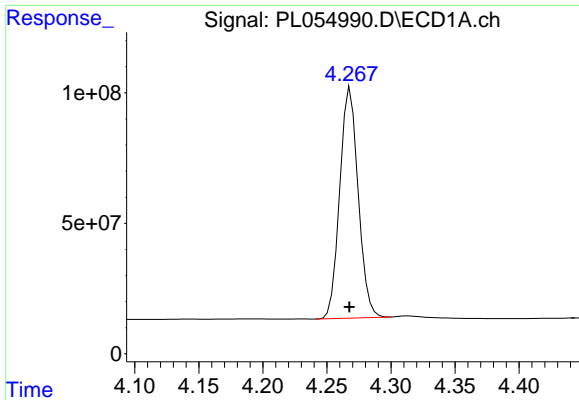
#2 alpha-BHC

R.T.: 3.982 min
 Delta R.T.: 0.001 min
 Response: 969321605
 Conc: 51.06 ng/ml



#2 alpha-BHC

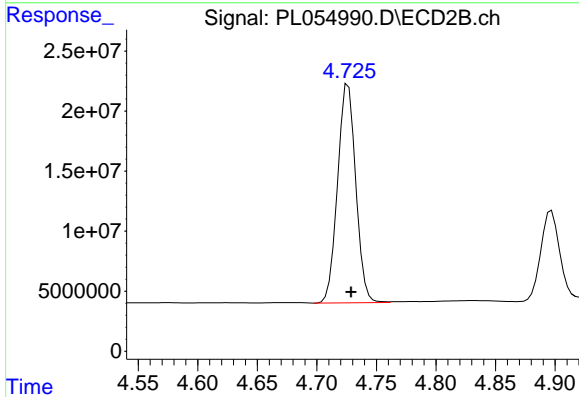
R.T.: 4.441 min
 Delta R.T.: -0.003 min
 Response: 211373857
 Conc: 59.66 ng/ml



#3 gamma-BHC (Lindane)

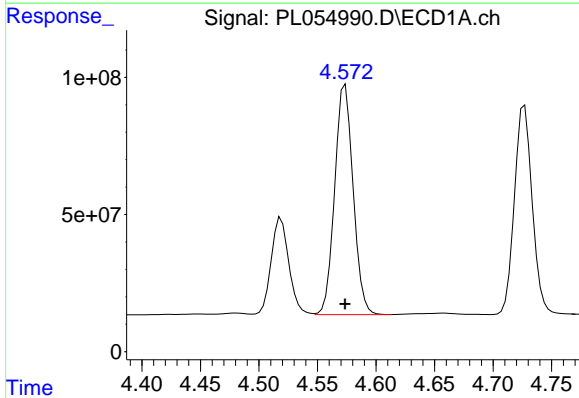
R.T.: 4.268 min
Delta R.T.: 0.000 min
Response: 883820759
Conc: 51.85 ng/ml

Instrument :
ECD_L
ClientSampled :
PB125481BS



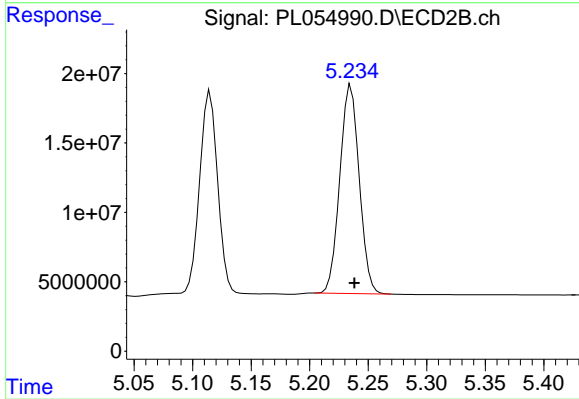
#3 gamma-BHC (Lindane)

R.T.: 4.726 min
Delta R.T.: -0.002 min
Response: 193245773
Conc: 59.27 ng/ml



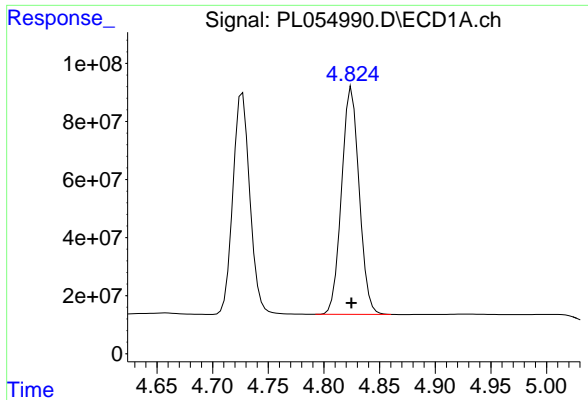
#4 Heptachlor

R.T.: 4.574 min
Delta R.T.: 0.000 min
Response: 919365583
Conc: 52.14 ng/ml



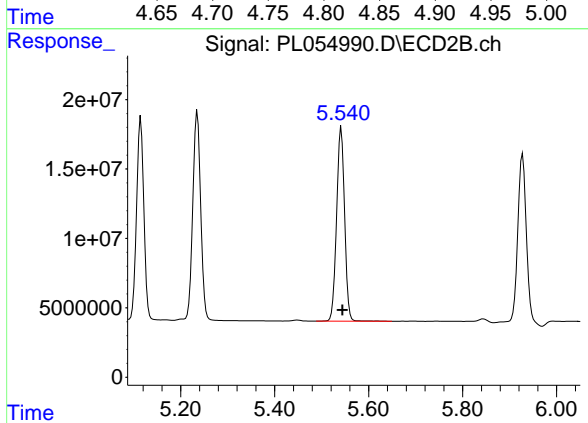
#4 Heptachlor

R.T.: 5.235 min
Delta R.T.: -0.003 min
Response: 173385831
Conc: 57.45 ng/ml

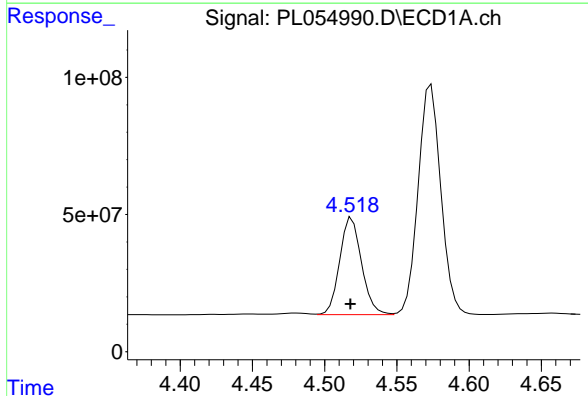


#5 Aldrin
 R.T.: 4.825 min
 Delta R.T.: 0.000 min
 Response: 860013574
 Conc: 52.76 ng/ml

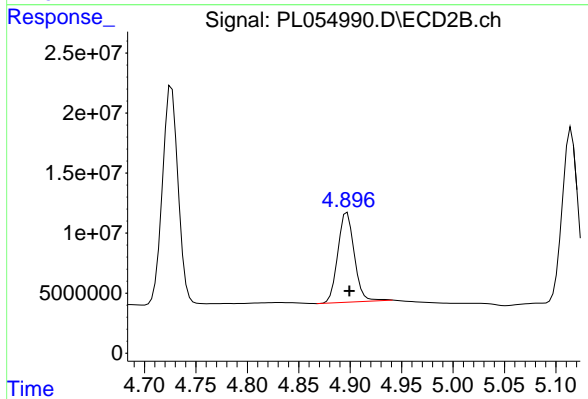
Instrument :
 ECD_L
ClientSampled :
 PB125481BS



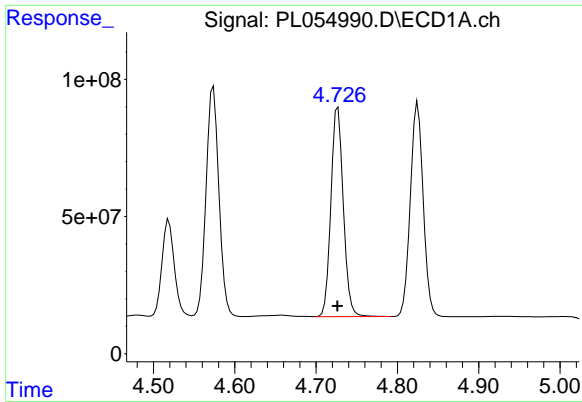
#5 Aldrin
 R.T.: 5.542 min
 Delta R.T.: -0.002 min
 Response: 165717561
 Conc: 59.47 ng/ml



#6 beta-BHC
 R.T.: 4.519 min
 Delta R.T.: 0.001 min
 Response: 371492407
 Conc: 50.09 ng/ml



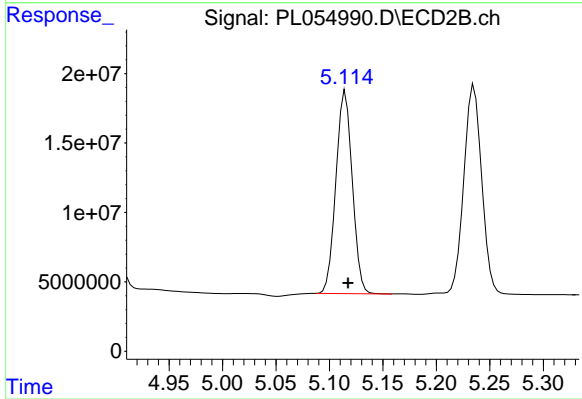
#6 beta-BHC
 R.T.: 4.897 min
 Delta R.T.: -0.002 min
 Response: 83330473
 Conc: 59.17 ng/ml



#7 delta-BHC

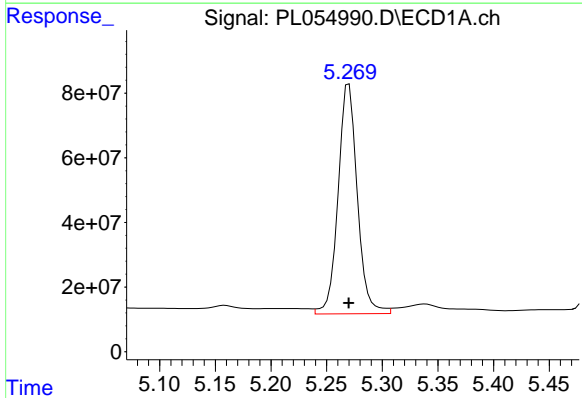
R.T.: 4.727 min
 Delta R.T.: 0.000 min
 Response: 811370587
 Conc: 49.91 ng/ml

Instrument :
 ECD_L
 ClientSampled :
 PB125481BS



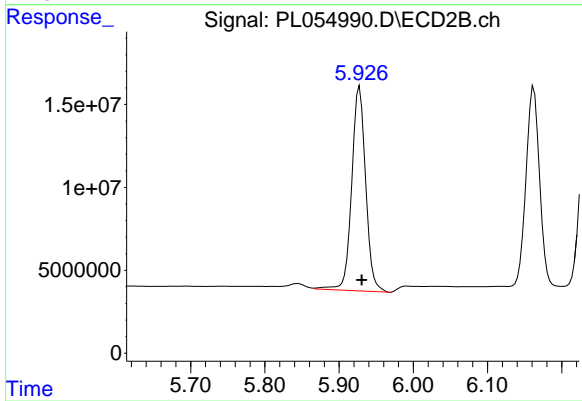
#7 delta-BHC

R.T.: 5.115 min
 Delta R.T.: -0.002 min
 Response: 155671764
 Conc: 58.39 ng/ml



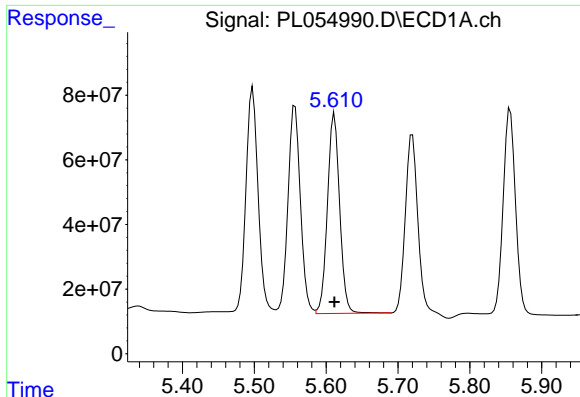
#8 Heptachlor epoxide

R.T.: 5.270 min
 Delta R.T.: 0.000 min
 Response: 855603477
 Conc: 56.56 ng/ml



#8 Heptachlor epoxide

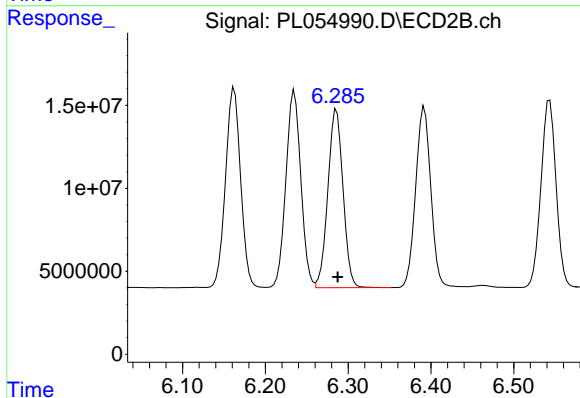
R.T.: 5.928 min
 Delta R.T.: -0.003 min
 Response: 160955133
 Conc: 64.43 ng/ml



#9 Endosulfan I

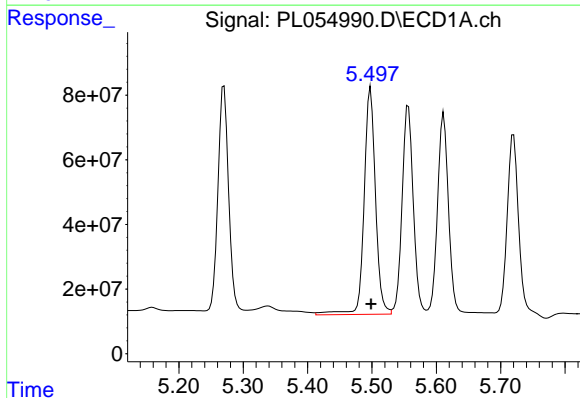
R.T.: 5.611 min
Delta R.T.: 0.000 min
Response: 730165939
Conc: 53.54 ng/ml

Instrument :
ECD_L
ClientSampleId :
PB125481BS



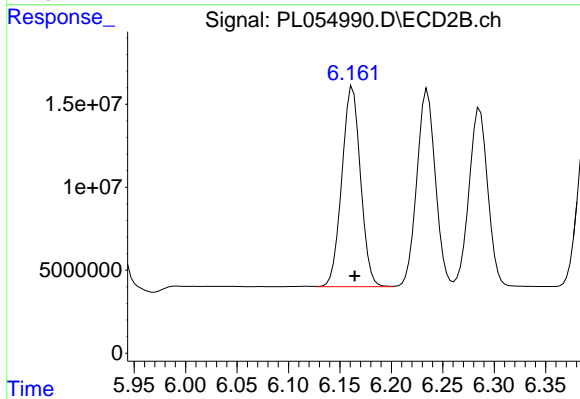
#9 Endosulfan I

R.T.: 6.286 min
Delta R.T.: -0.002 min
Response: 136569751
Conc: 55.21 ng/ml



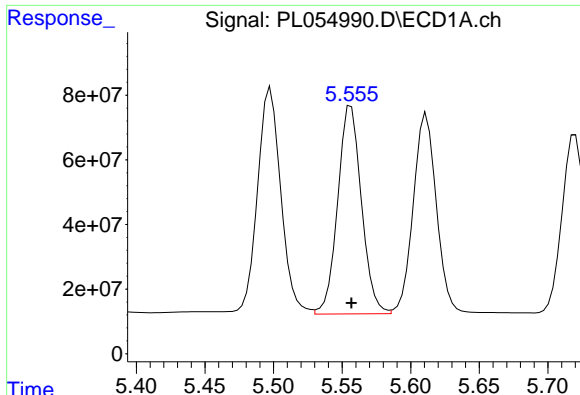
#10 gamma-Chlordane

R.T.: 5.498 min
Delta R.T.: 0.000 min
Response: 863935306
Conc: 56.97 ng/ml



#10 gamma-Chlordane

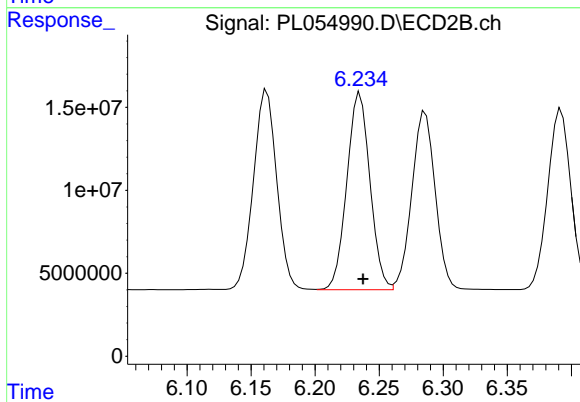
R.T.: 6.162 min
Delta R.T.: -0.002 min
Response: 152511334
Conc: 57.89 ng/ml



#11 alpha-Chlordane

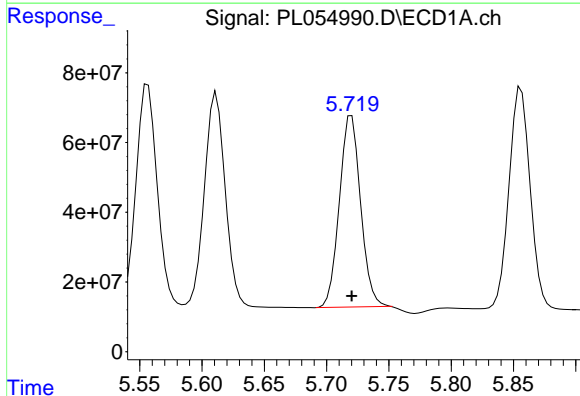
R.T.: 5.557 min
 Delta R.T.: 0.000 min
 Response: 776935511
 Conc: 52.69 ng/ml

Instrument :
 ECD_L
 ClientSampled :
 PB125481BS



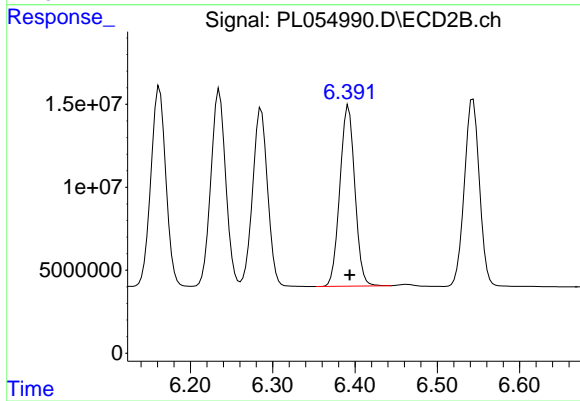
#11 alpha-Chlordane

R.T.: 6.235 min
 Delta R.T.: -0.002 min
 Response: 149072569
 Conc: 56.78 ng/ml



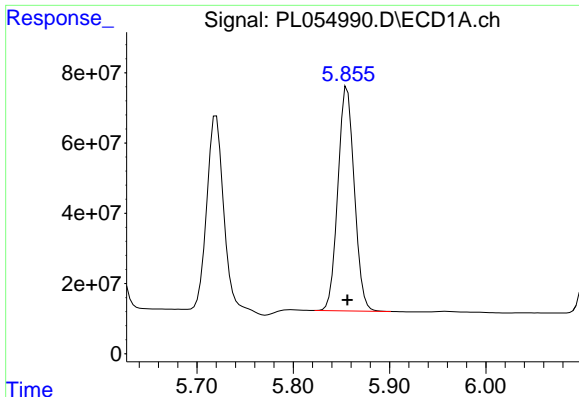
#12 4,4'-DDE

R.T.: 5.720 min
 Delta R.T.: 0.000 min
 Response: 652593251
 Conc: 49.05 ng/ml



#12 4,4'-DDE

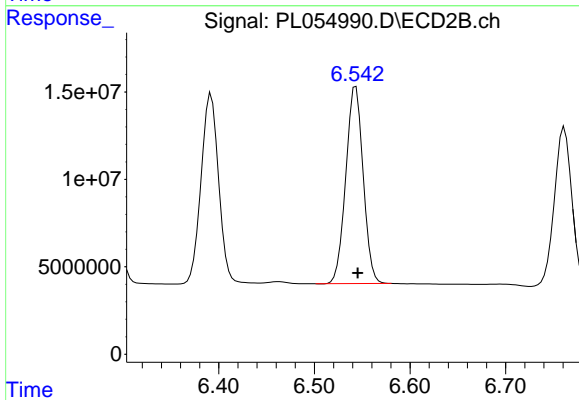
R.T.: 6.392 min
 Delta R.T.: -0.002 min
 Response: 137767738
 Conc: 55.65 ng/ml



#13 Dieldrin

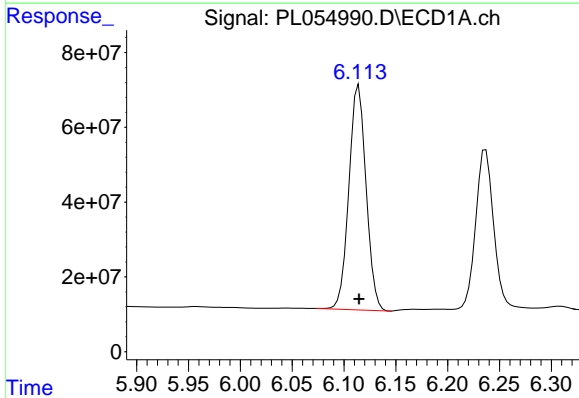
R.T.: 5.856 min
 Delta R.T.: 0.000 min
 Response: 753214794
 Conc: 53.12 ng/ml

Instrument :
 ECD_L
 ClientSampled :
 PB125481BS



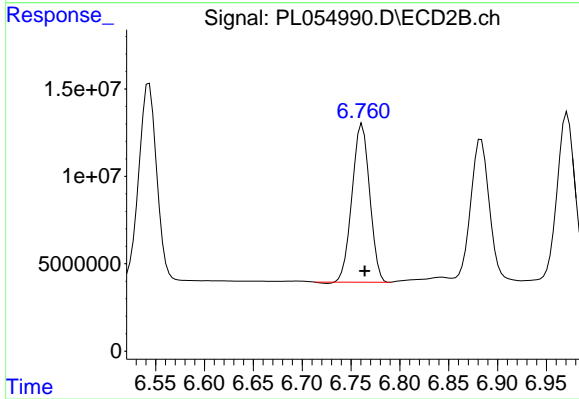
#13 Dieldrin

R.T.: 6.543 min
 Delta R.T.: -0.002 min
 Response: 142854560
 Conc: 56.12 ng/ml



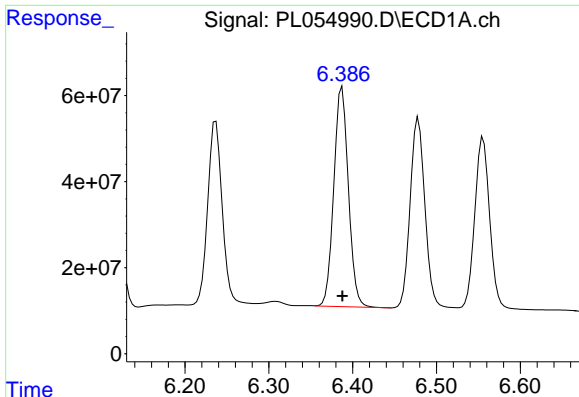
#14 Endrin

R.T.: 6.114 min
 Delta R.T.: 0.000 min
 Response: 694102078
 Conc: 54.51 ng/ml



#14 Endrin

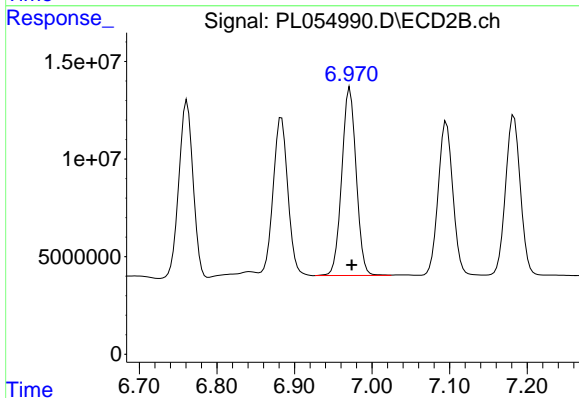
R.T.: 6.762 min
 Delta R.T.: -0.002 min
 Response: 113742368
 Conc: 51.34 ng/ml



#15 Endosulfan II

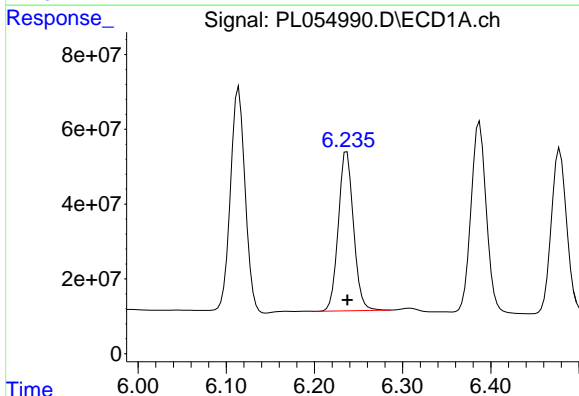
R.T.: 6.387 min
 Delta R.T.: 0.000 min
 Response: 616979996
 Conc: 50.99 ng/ml

Instrument :
 ECD_L
 ClientSampleId :
 PB125481BS



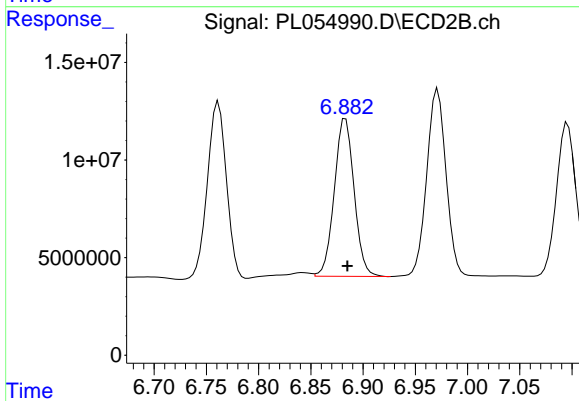
#15 Endosulfan II

R.T.: 6.971 min
 Delta R.T.: -0.002 min
 Response: 124210229
 Conc: 52.83 ng/ml



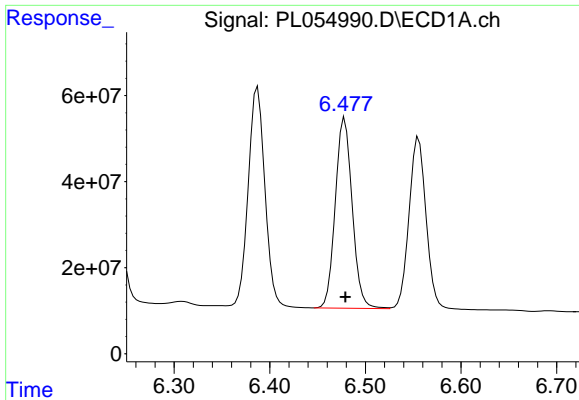
#16 4,4'-DDD

R.T.: 6.237 min
 Delta R.T.: 0.000 min
 Response: 508258205
 Conc: 52.04 ng/ml



#16 4,4'-DDD

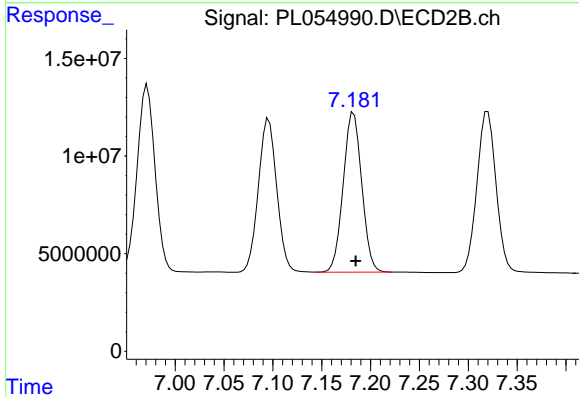
R.T.: 6.883 min
 Delta R.T.: -0.002 min
 Response: 106578008
 Conc: 55.51 ng/ml



#17 4,4'-DDT

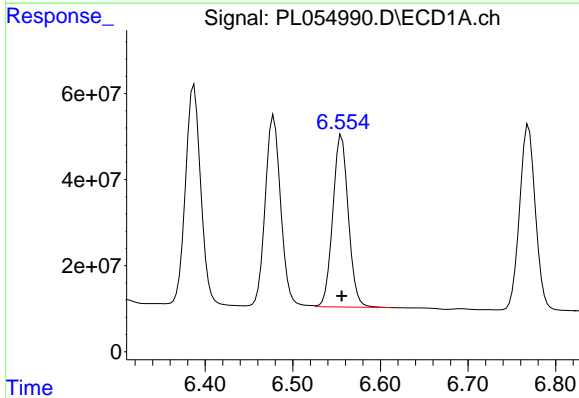
R.T.: 6.478 min
 Delta R.T.: 0.000 min
 Response: 543360863
 Conc: 51.87 ng/ml

Instrument :
 ECD_L
 ClientSampleId :
 PB125481BS



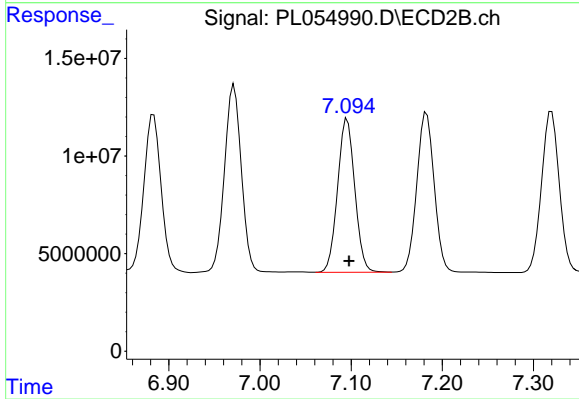
#17 4,4'-DDT

R.T.: 7.183 min
 Delta R.T.: -0.002 min
 Response: 108240130
 Conc: 54.63 ng/ml



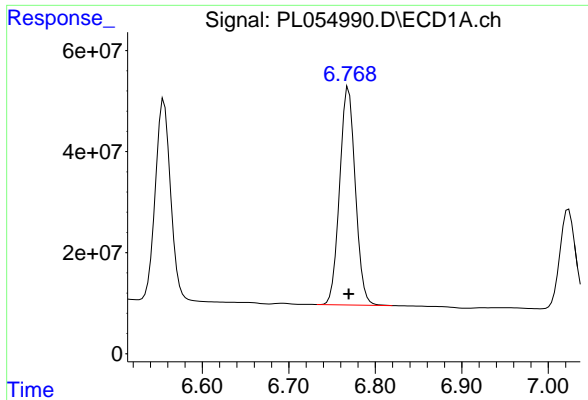
#18 Endrin aldehyde

R.T.: 6.556 min
 Delta R.T.: 0.000 min
 Response: 492658903
 Conc: 49.75 ng/ml



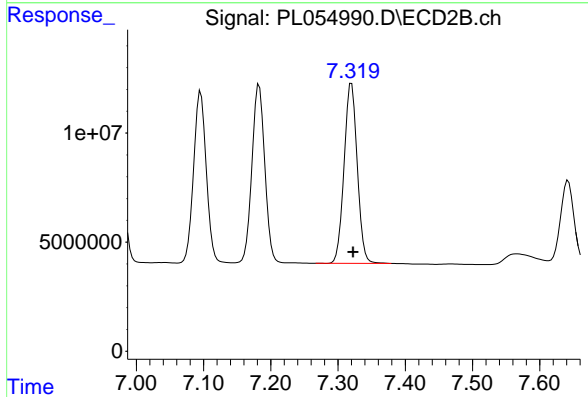
#18 Endrin aldehyde

R.T.: 7.096 min
 Delta R.T.: -0.002 min
 Response: 103265135
 Conc: 52.68 ng/ml

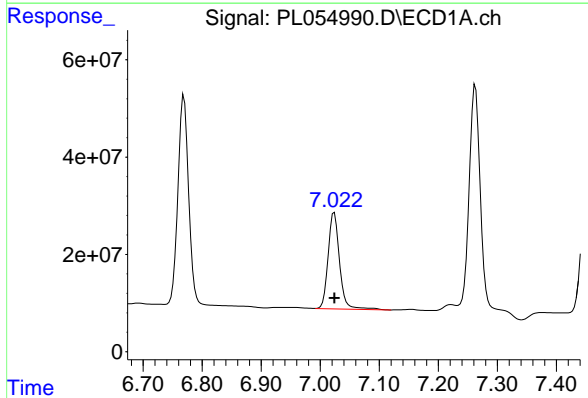


#19 Endosulfan Sulfate
 R.T.: 6.769 min
 Delta R.T.: 0.000 min
 Response: 539266193
 Conc: 50.36 ng/ml

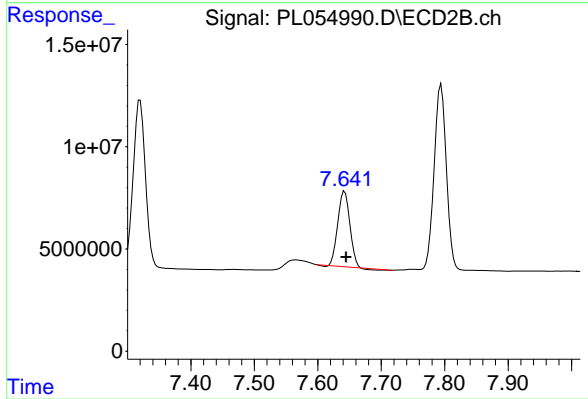
Instrument :
 ECD_L
 ClientSampleId :
 PB125481BS



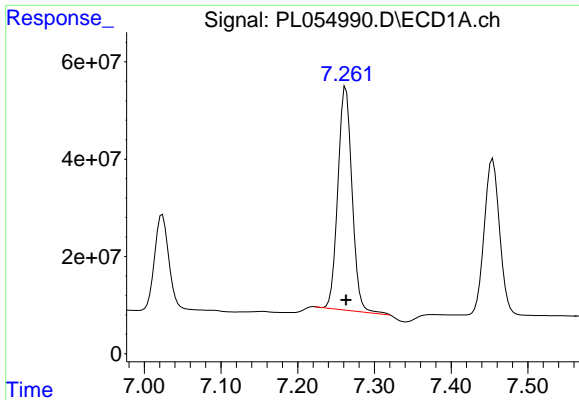
#19 Endosulfan Sulfate
 R.T.: 7.320 min
 Delta R.T.: -0.002 min
 Response: 112356619
 Conc: 52.99 ng/ml



#20 Methoxychlor
 R.T.: 7.024 min
 Delta R.T.: 0.000 min
 Response: 266596733
 Conc: 53.19 ng/ml

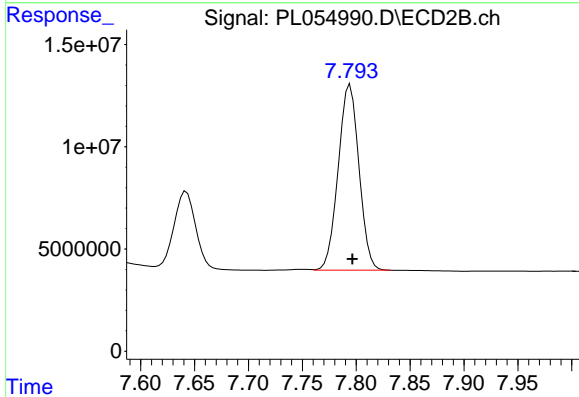


#20 Methoxychlor
 R.T.: 7.642 min
 Delta R.T.: -0.002 min
 Response: 48033550
 Conc: 42.11 ng/ml

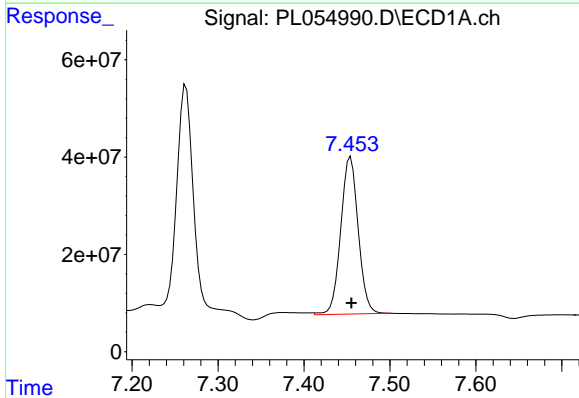


#21 Endrin ketone
 R.T.: 7.263 min
 Delta R.T.: 0.000 min
 Response: 588491541
 Conc: 54.14 ng/ml

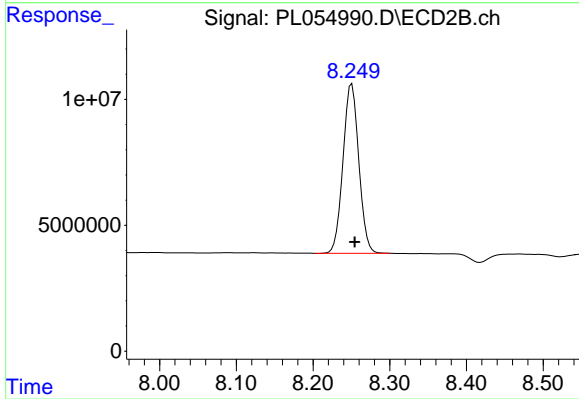
Instrument :
 ECD_L
 ClientSampleId :
 PB125481BS



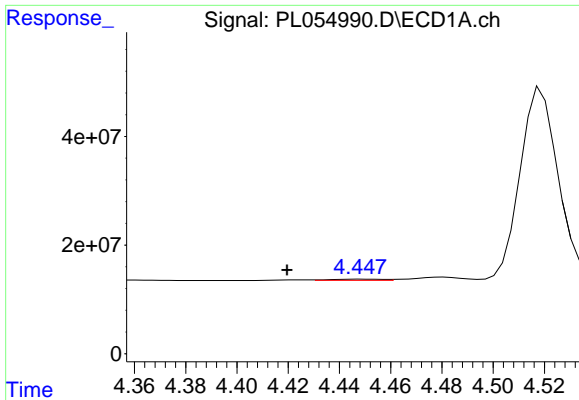
#21 Endrin ketone
 R.T.: 7.794 min
 Delta R.T.: -0.002 min
 Response: 121677802
 Conc: 54.06 ng/ml



#22 Mirex
 R.T.: 7.454 min
 Delta R.T.: -0.001 min
 Response: 457208161
 Conc: 56.32 ng/ml



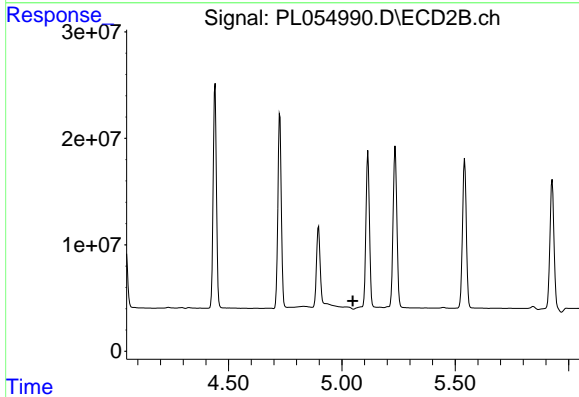
#22 Mirex
 R.T.: 8.251 min
 Delta R.T.: -0.004 min
 Response: 96678315
 Conc: 55.94 ng/ml



#23 Chlordane-1

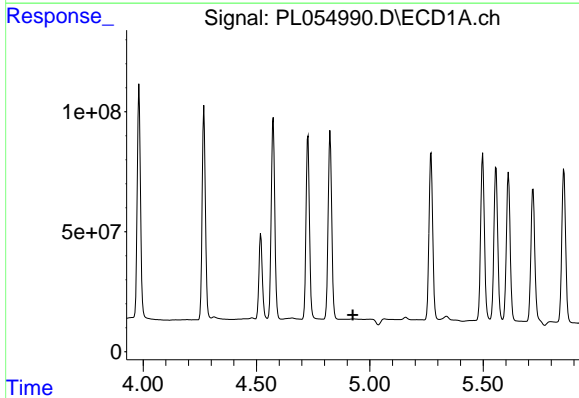
R.T.: 4.448 min
 Delta R.T.: 0.029 min
 Response: 3235208
 Conc: 8.20 ng/ml

Instrument :
 ECD_L
 ClientSampled :
 PB125481BS



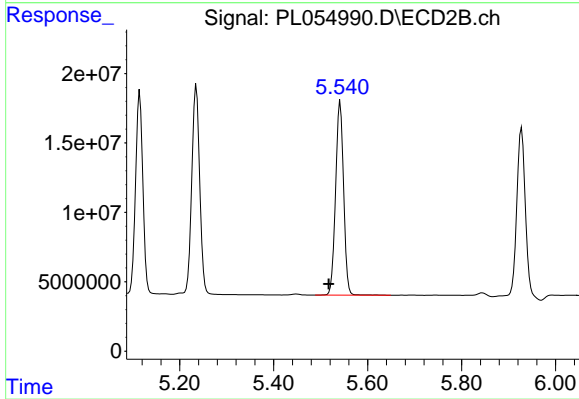
#23 Chlordane-1

R.T.: 0.000 min
 Exp R.T. : 5.049 min
 Response: 0
 Conc: N.D.



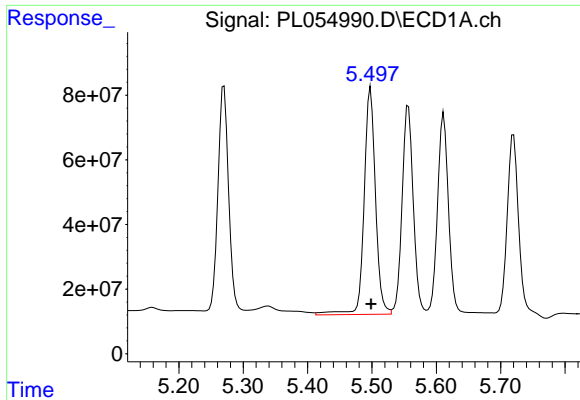
#24 Chlordane-2

R.T.: 0.000 min
 Exp R.T. : 4.924 min
 Response: 0
 Conc: N.D.



#24 Chlordane-2

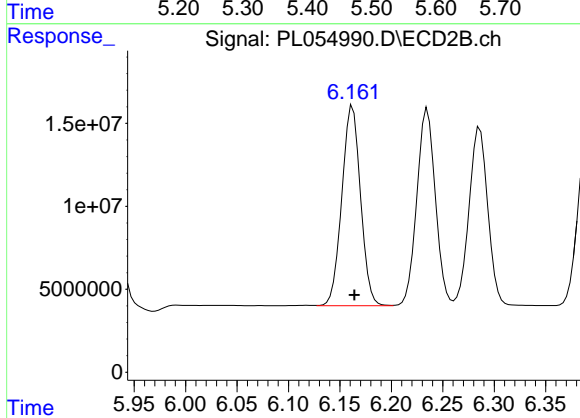
R.T.: 5.542 min
 Delta R.T.: 0.024 min
 Response: 165717561
 Conc: 1849.03 ng/ml



#25 Chlordane-3

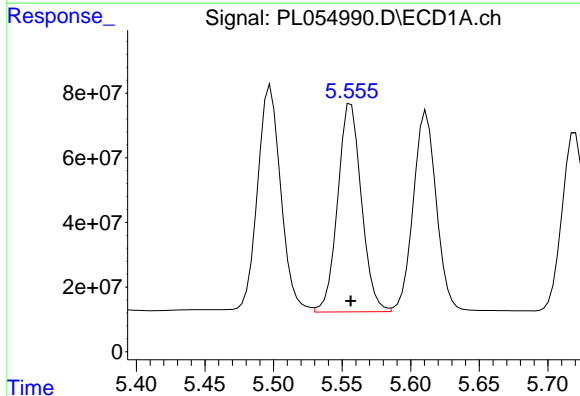
R.T.: 5.498 min
 Delta R.T.: 0.000 min
 Response: 863935306
 Conc: 672.78 ng/ml

Instrument :
 ECD_L
 ClientSampleId :
 PB125481BS



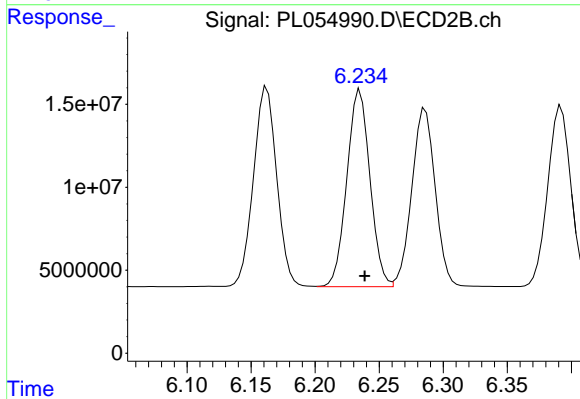
#25 Chlordane-3

R.T.: 6.162 min
 Delta R.T.: -0.002 min
 Response: 152511334
 Conc: 491.34 ng/ml



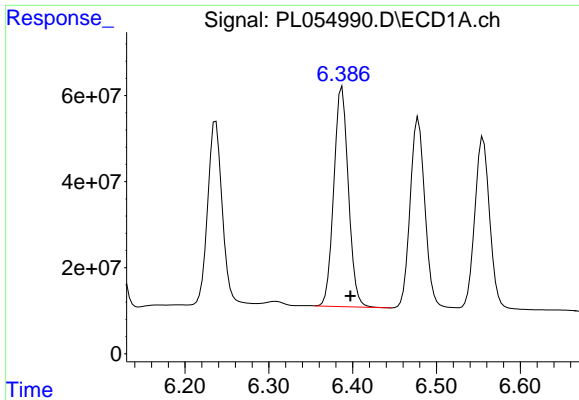
#26 Chlordane-4

R.T.: 5.557 min
 Delta R.T.: 0.000 min
 Response: 776935511
 Conc: 735.53 ng/ml



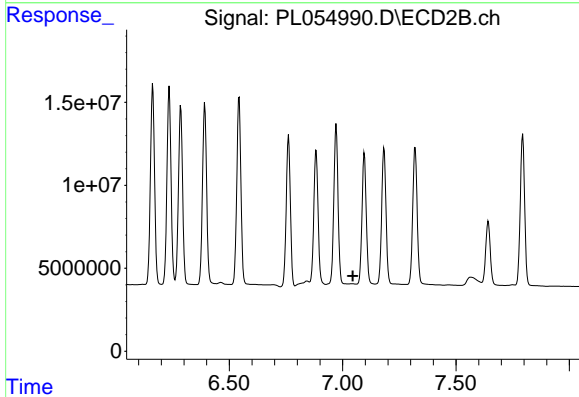
#26 Chlordane-4

R.T.: 6.235 min
 Delta R.T.: -0.004 min
 Response: 149072569
 Conc: 396.17 ng/ml

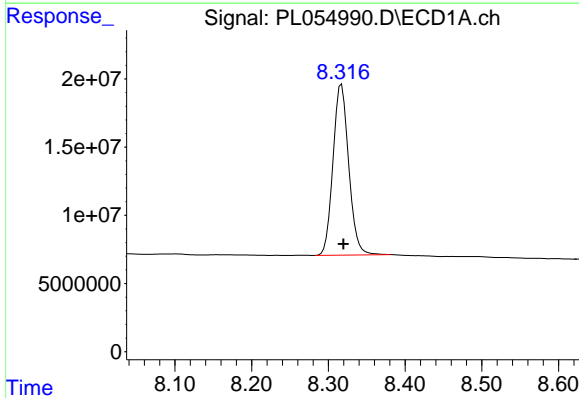


#27 Chlordane-5
 R.T.: 6.387 min
 Delta R.T.: -0.010 min
 Response: 616979996
 Conc: 1638.72 ng/ml

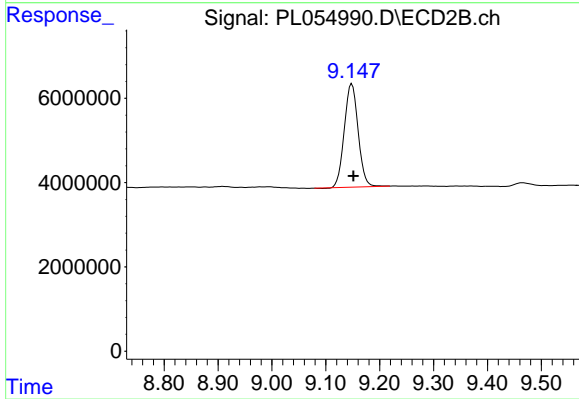
Instrument :
 ECD_L
 ClientSampleId :
 PB125481BS



#27 Chlordane-5
 R.T.: 0.000 min
 Exp R.T. : 7.045 min
 Response: 0
 Conc: N.D.



#28 Decachlorobiphenyl
 R.T.: 8.317 min
 Delta R.T.: -0.003 min
 Response: 178327868
 Conc: 18.62 ng/ml



#28 Decachlorobiphenyl
 R.T.: 9.148 min
 Delta R.T.: -0.003 min
 Response: 43819625
 Conc: 18.28 ng/ml