

Data Path : Z:\pestpcbsrv\HPCHEM1\ECD_L\Data\PL112619\
 Data File : PL055003.D
 Signal(s) : Signal #1: ECD1A.ch Signal #2: ECD2B.ch
 Acq On : 16 Dec 2019 17:31
 Operator : SG\AJ
 Sample : K6294-01MS
 Misc :
 ALS Vial : 17 Sample Multiplier: 1

Instrument :
 ECD_L
 ClientSampleId :
 TP-1MS

Integration File signal 1: autoint1.e
 Integration File signal 2: autoint2.e
 Quant Time: Dec 17 03:01:56 2019
 Quant Method : Z:\pestpcbsrv\HPCHEM1\ECD_L\methods\PL112619.M
 Quant Title : GC Extractables
 QLast Update : Wed Nov 27 01:19:55 2019
 Response via : Initial Calibration
 Integrator: ChemStation

Volume Inj. : 1 µl
 Signal #1 Phase : ZB-MR2 Signal #2 Phase: ZB-MR1
 Signal #1 Info : 30M x 0.32mm x0.2 Signal #2 Info : 30M x 0.32mm x0.5µm

Compound	RT#1	RT#2	Resp#1	Resp#2	ng/ml	ng/ml
System Monitoring Compounds						
1) SA Tetrachlo...	3.536	4.049	231.2E6	63502708	19.876	24.885 #
28) SA Decachlor...	8.314	9.146	146.6E6	41631967	15.307	17.365
Target Compounds						
2) A alpha-BHC	3.979	4.440	888.8E6	199.9E6	46.818	56.437
3) MA gamma-BHC...	4.265	4.726	807.2E6	185.4E6	47.356	56.852
4) MA Heptachlor	4.571	5.235	838.4E6	171.8E6	47.548	56.933
5) MB Aldrin	4.822	5.540	802.9E6	164.4E6	49.255	58.987
6) B beta-BHC	4.516	4.897	341.9E6	79705602	46.103	56.600
7) B delta-BHC	4.723	5.114	488.8E6	100.1E6	30.067	37.546
8) B Heptachlo...	5.267	5.927	733.2E6	143.1E6	48.471	57.275
9) A Endosulfan I	5.608	6.285	641.9E6	132.1E6	47.069	53.423
10) B gamma-Chl...	5.494	6.162	709.5E6	143.0E6	46.786	54.269
11) B alpha-Chl...	5.553	6.234	683.7E6	139.8E6	46.368	53.237
12) B 4,4'-DDE	5.716	6.391	641.5E6	135.2E6	48.213	54.630
13) MA Dieldrin	5.852	6.542	663.0E6	136.6E6	46.756	53.685
14) MA Endrin	6.111	6.761	582.5E6	107.9E6	45.742	48.693
15) B Endosulfa...	6.383	6.971	519.3E6	116.9E6	42.914	49.716
16) A 4,4'-DDD	6.233	6.883	448.9E6	104.1E6	45.963	54.192
17) MA 4,4'-DDT	6.475	7.182	467.7E6	102.5E6	44.647	51.733
18) B Endrin al...	6.552	7.095	416.5E6	97675888	42.055	49.830
19) B Endosulfa...	6.765	7.319	460.5E6	104.7E6	43.004	49.370
20) A Methoxychlor	7.019	7.642	225.2E6	51640823	44.931	45.272
21) B Endrin ke...	7.258	7.793	483.1E6	117.1E6	44.451	52.028
22) Mirex	7.450	8.250	338.3E6	79901227	41.671	46.230

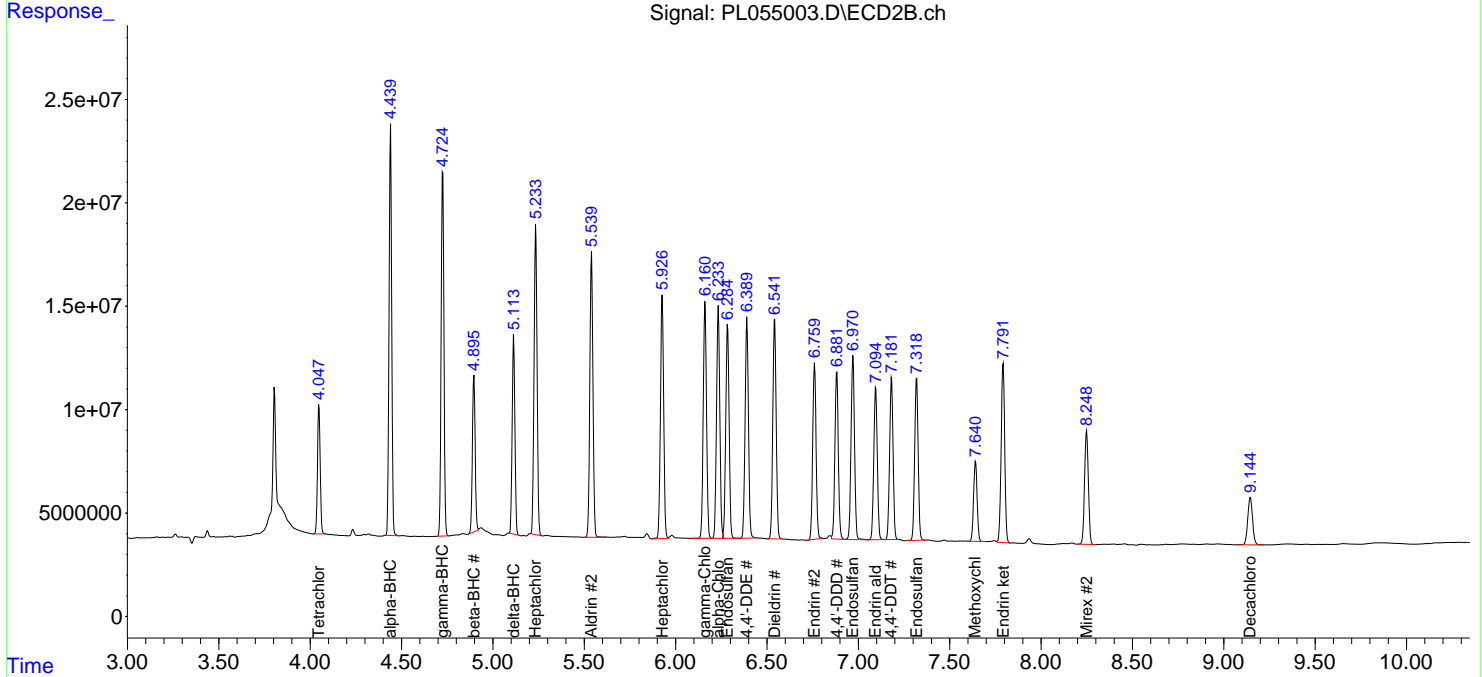
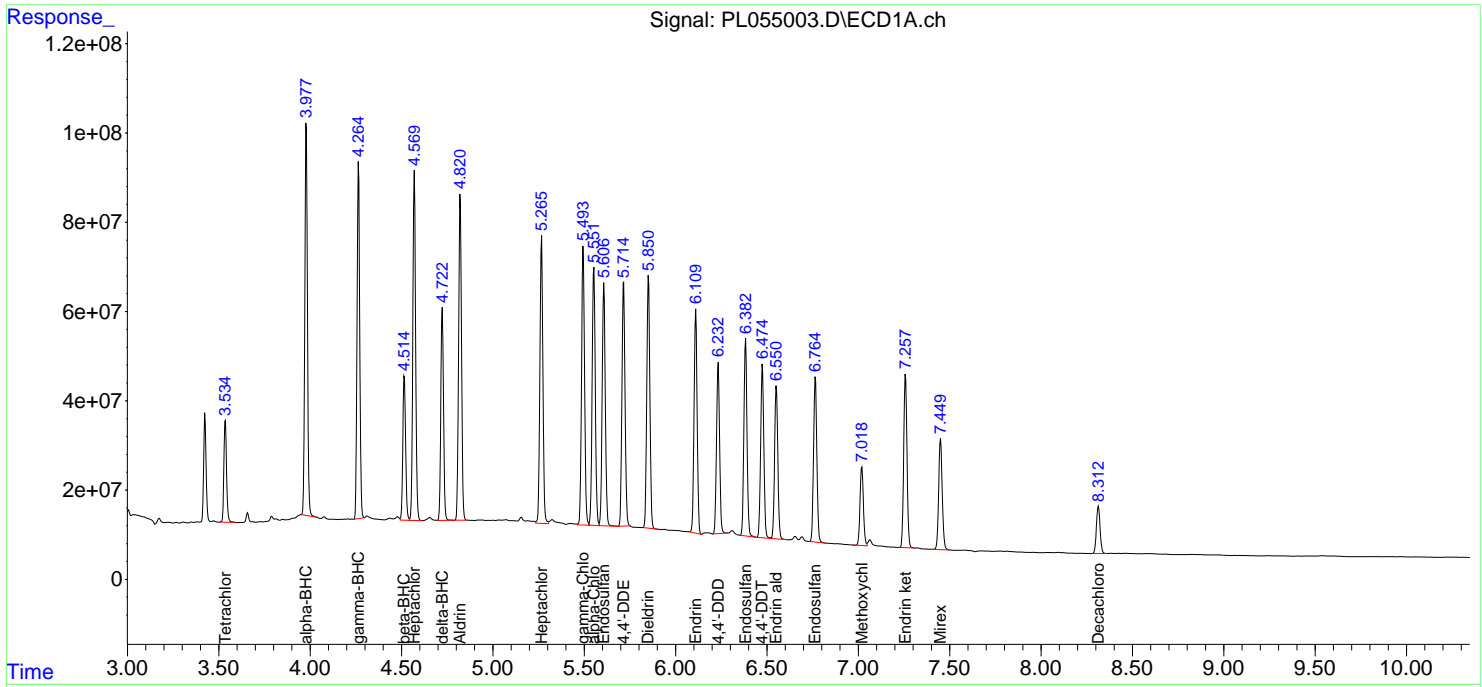
(f)=RT Delta > 1/2 Window (#)=Amounts differ by > 25% (m)=manual int.

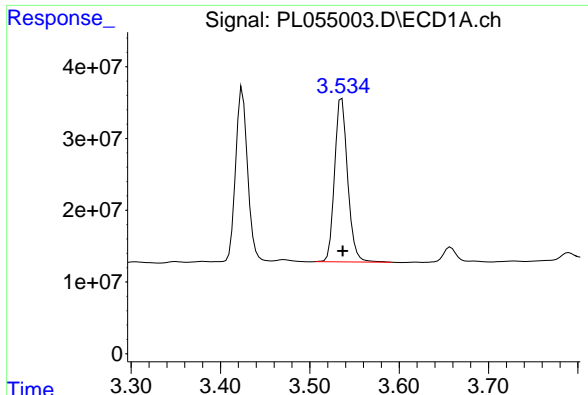
Data Path : Z:\pestpcbsrv\HPCHEM1\ECD_L\Data\PL121619\
 Data File : PL055003.D
 Signal(s) : Signal #1: ECD1A.ch Signal #2: ECD2B.ch
 Acq On : 16 Dec 2019 17:31
 Operator : SG\AJ
 Sample : K6294-01MS
 Misc :
 ALS Vial : 17 Sample Multiplier: 1

Instrument :
 ECD_L
 ClientSampled :
 TP-1MS

Integration File signal 1: autoint1.e
 Integration File signal 2: autoint2.e
 Quant Time: Dec 17 03:01:56 2019
 Quant Method : Z:\pestpcbsrv\HPCHEM1\ECD_L\methods\PL112619.M
 Quant Title : GC Extractables
 QLast Update : Wed Nov 27 01:19:55 2019
 Response via : Initial Calibration
 Integrator: ChemStation

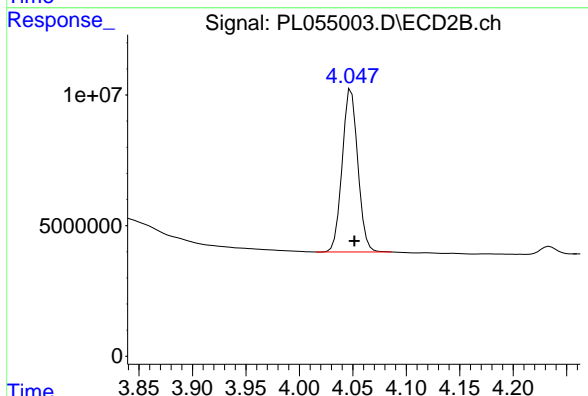
Volume Inj. : 1 µl
 Signal #1 Phase : ZB-MR2 Signal #2 Phase: ZB-MR1
 Signal #1 Info : 30M x 0.32mm x0.2 Signal #2 Info : 30M x 0.32mm x0.5µm



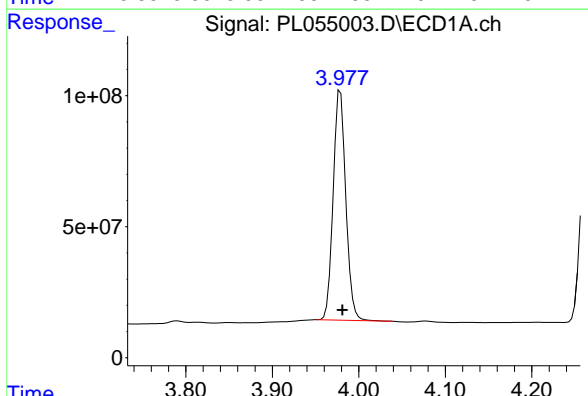


#1 Tetrachloro-m-xylene
 R.T.: 3.536 min
 Delta R.T.: -0.001 min
 Response: 231241293
 Conc: 19.88 ng/ml

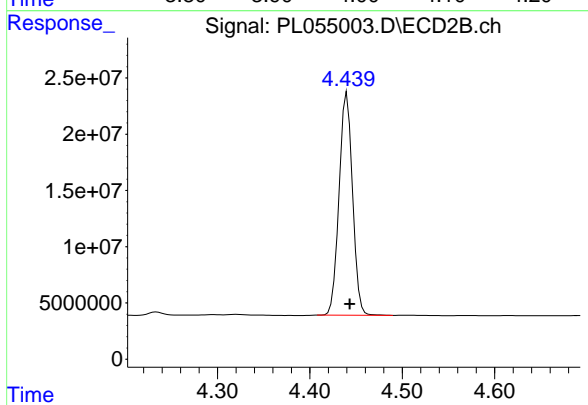
Instrument :
 ECD_L
 ClientSampleId :
 TP-1MS



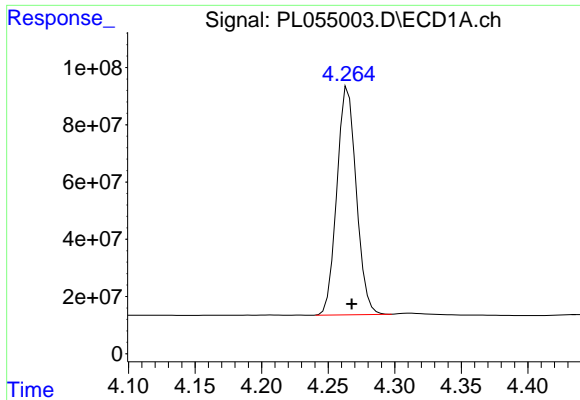
#1 Tetrachloro-m-xylene
 R.T.: 4.049 min
 Delta R.T.: -0.003 min
 Response: 63502708
 Conc: 24.89 ng/ml



#2 alpha-BHC
 R.T.: 3.979 min
 Delta R.T.: -0.002 min
 Response: 888802633
 Conc: 46.82 ng/ml

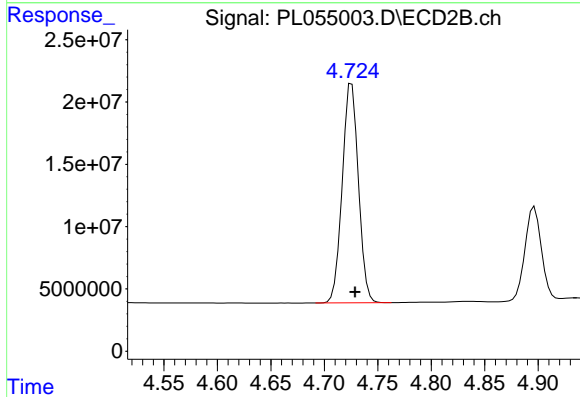


#2 alpha-BHC
 R.T.: 4.440 min
 Delta R.T.: -0.003 min
 Response: 199943358
 Conc: 56.44 ng/ml

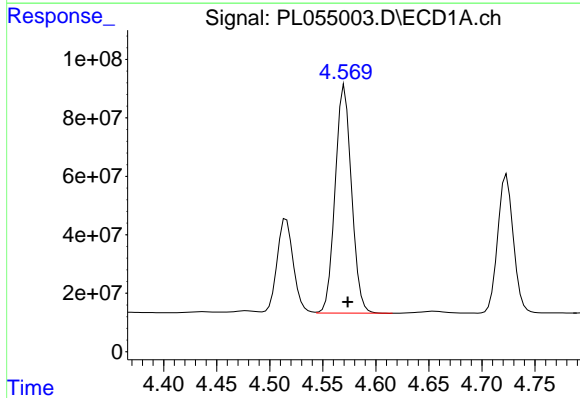


#3 gamma-BHC (Lindane)
 R.T.: 4.265 min
 Delta R.T.: -0.003 min
 Response: 807228687
 Conc: 47.36 ng/ml

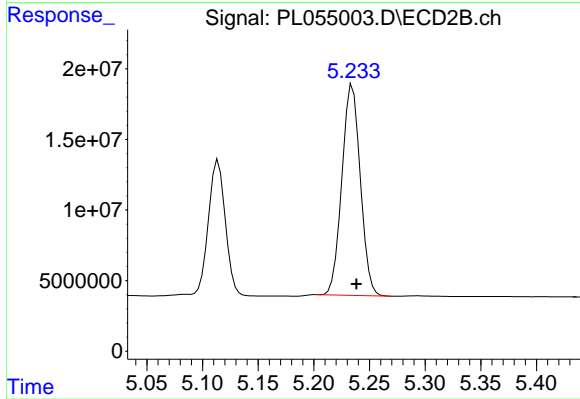
Instrument :
 ECD_L
 ClientSampled :
 TP-1MS



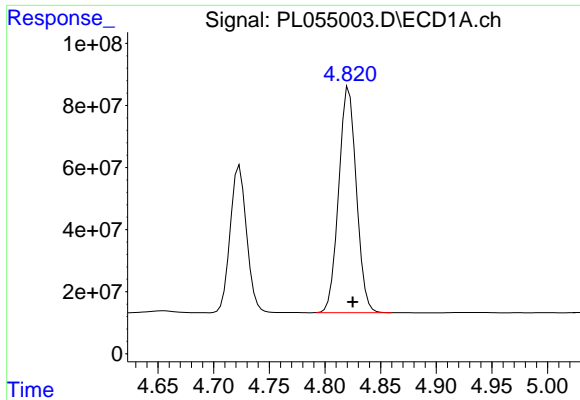
#3 gamma-BHC (Lindane)
 R.T.: 4.726 min
 Delta R.T.: -0.003 min
 Response: 185368241
 Conc: 56.85 ng/ml



#4 Heptachlor
 R.T.: 4.571 min
 Delta R.T.: -0.003 min
 Response: 838443645
 Conc: 47.55 ng/ml

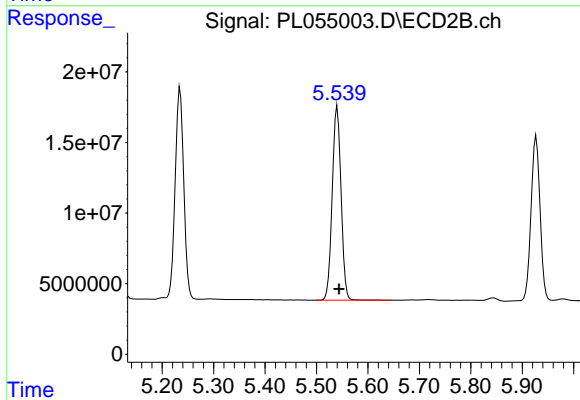


#4 Heptachlor
 R.T.: 5.235 min
 Delta R.T.: -0.004 min
 Response: 171821467
 Conc: 56.93 ng/ml

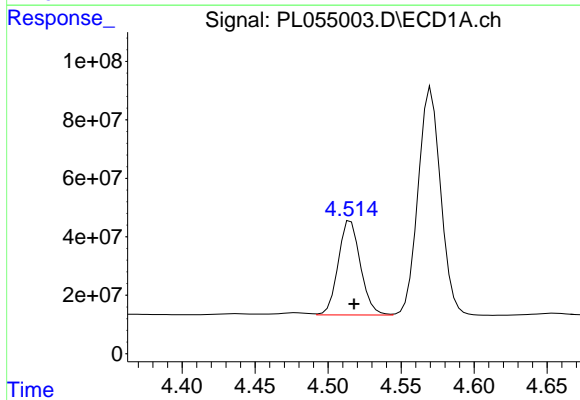


#5 Aldrin
 R.T.: 4.822 min
 Delta R.T.: -0.003 min
 Response: 802859296
 Conc: 49.26 ng/ml

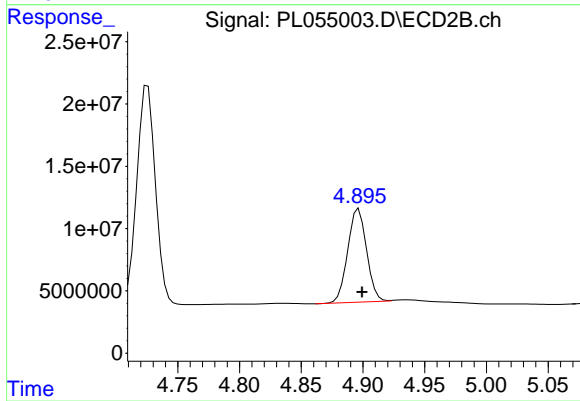
Instrument :
 ECD_L
 ClientSampleId :
 TP-1MS



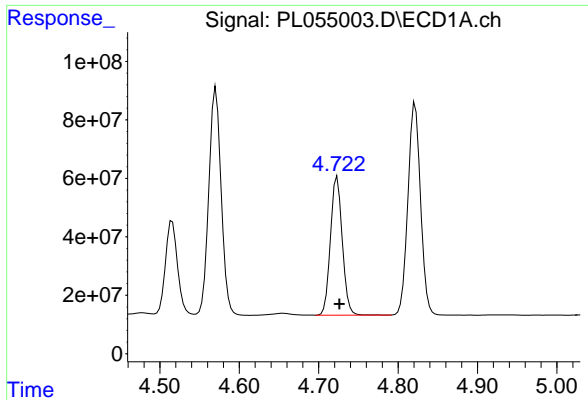
#5 Aldrin
 R.T.: 5.540 min
 Delta R.T.: -0.004 min
 Response: 164365288
 Conc: 58.99 ng/ml



#6 beta-BHC
 R.T.: 4.516 min
 Delta R.T.: -0.002 min
 Response: 341943066
 Conc: 46.10 ng/ml

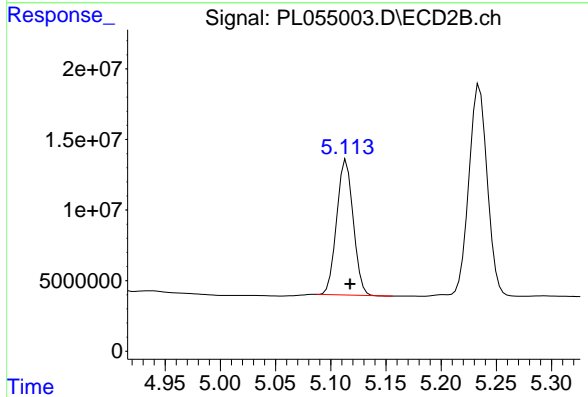


#6 beta-BHC
 R.T.: 4.897 min
 Delta R.T.: -0.003 min
 Response: 79705602
 Conc: 56.60 ng/ml

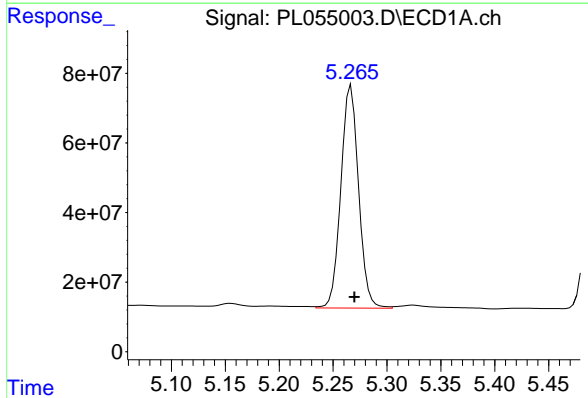


#7 delta-BHC
 R.T.: 4.723 min
 Delta R.T.: -0.003 min
 Response: 488751292
 Conc: 30.07 ng/ml

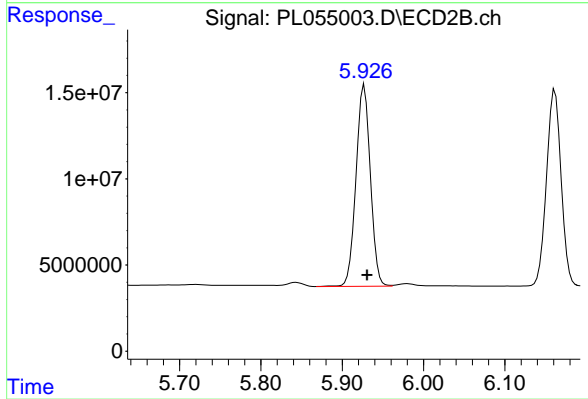
Instrument :
 ECD_L
 ClientSampled :
 TP-1MS



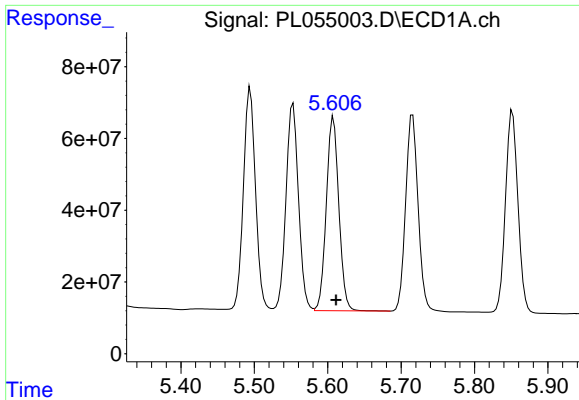
#7 delta-BHC
 R.T.: 5.114 min
 Delta R.T.: -0.003 min
 Response: 100103956
 Conc: 37.55 ng/ml



#8 Heptachlor epoxide
 R.T.: 5.267 min
 Delta R.T.: -0.003 min
 Response: 733177442
 Conc: 48.47 ng/ml

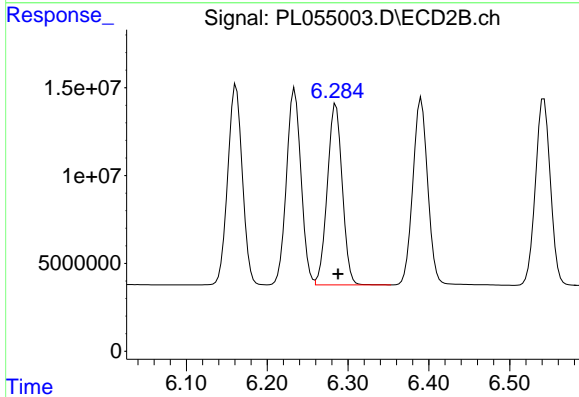


#8 Heptachlor epoxide
 R.T.: 5.927 min
 Delta R.T.: -0.003 min
 Response: 143082858
 Conc: 57.27 ng/ml

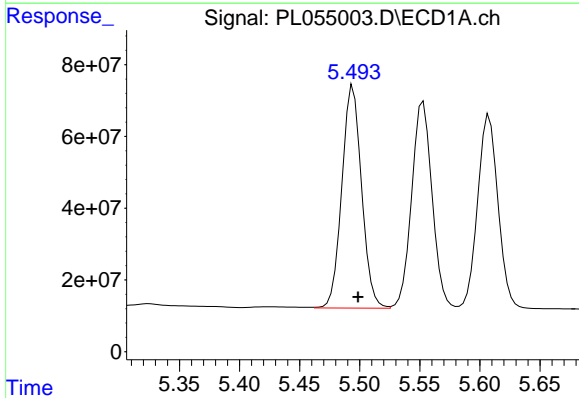


#9 Endosulfan I
 R.T.: 5.608 min
 Delta R.T.: -0.004 min
 Response: 641864036
 Conc: 47.07 ng/ml

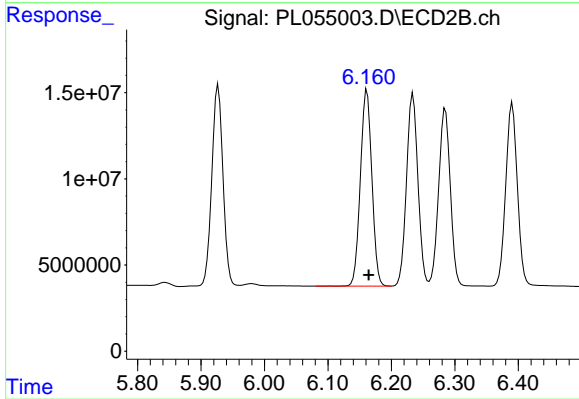
Instrument :
 ECD_L
 ClientSampled :
 TP-1MS



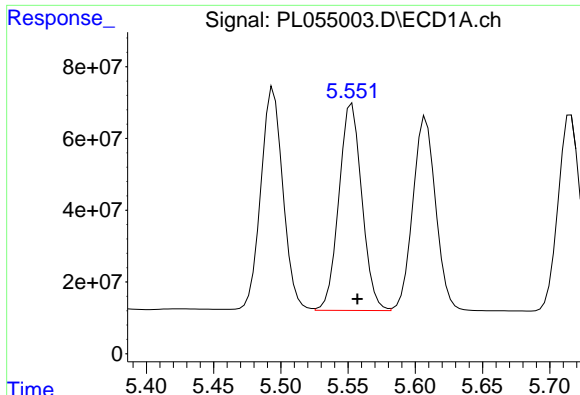
#9 Endosulfan I
 R.T.: 6.285 min
 Delta R.T.: -0.003 min
 Response: 132141652
 Conc: 53.42 ng/ml



#10 gamma-Chlordane
 R.T.: 5.494 min
 Delta R.T.: -0.004 min
 Response: 709475012
 Conc: 46.79 ng/ml



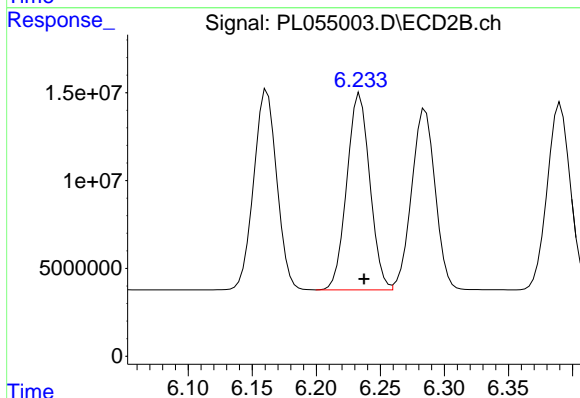
#10 gamma-Chlordane
 R.T.: 6.162 min
 Delta R.T.: -0.003 min
 Response: 142965275
 Conc: 54.27 ng/ml



#11 alpha-Chlordane

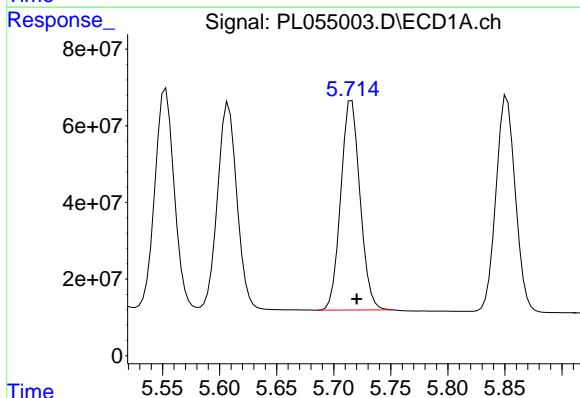
R.T.: 5.553 min
Delta R.T.: -0.004 min
Response: 683734360
Conc: 46.37 ng/ml

Instrument :
ECD_L
ClientSampled :
TP-1MS



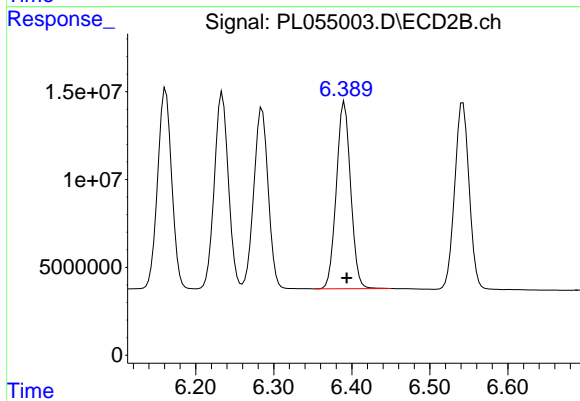
#11 alpha-Chlordane

R.T.: 6.234 min
Delta R.T.: -0.003 min
Response: 139782356
Conc: 53.24 ng/ml



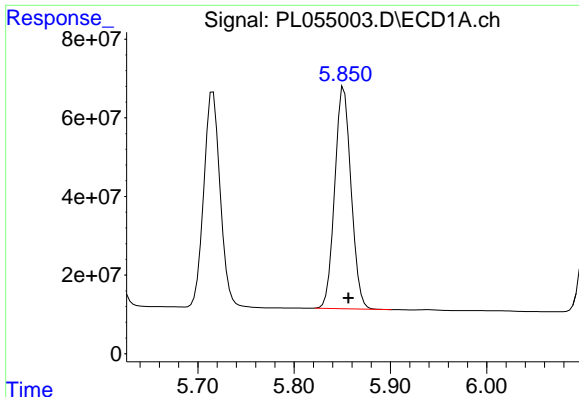
#12 4,4'-DDE

R.T.: 5.716 min
Delta R.T.: -0.004 min
Response: 641469842
Conc: 48.21 ng/ml



#12 4,4'-DDE

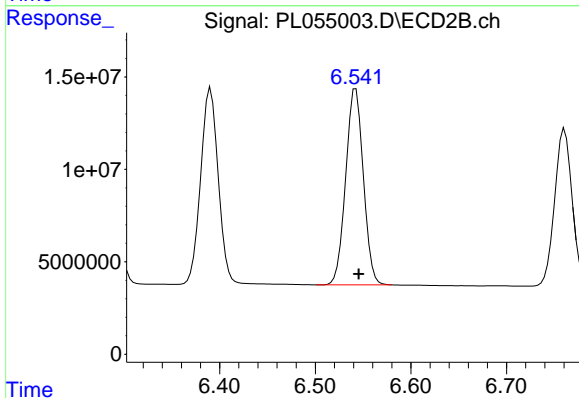
R.T.: 6.391 min
Delta R.T.: -0.003 min
Response: 135231334
Conc: 54.63 ng/ml



#13 Dieldrin

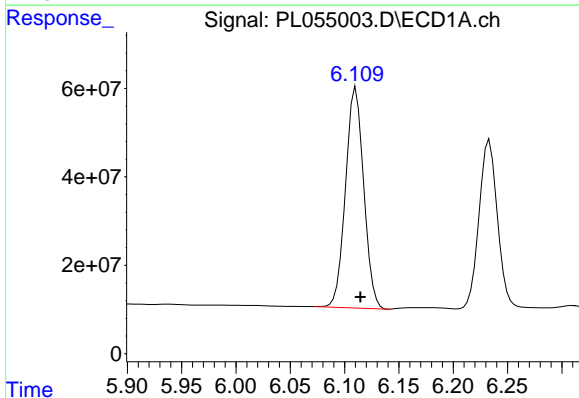
R.T.: 5.852 min
 Delta R.T.: -0.004 min
 Response: 663026416
 Conc: 46.76 ng/ml

Instrument :
 ECD_L
 ClientSampled :
 TP-1MS



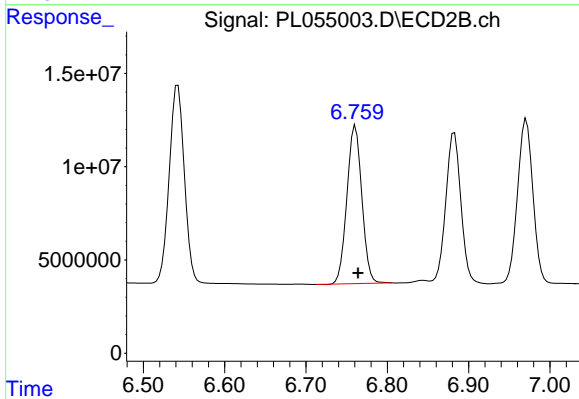
#13 Dieldrin

R.T.: 6.542 min
 Delta R.T.: -0.003 min
 Response: 136646359
 Conc: 53.69 ng/ml



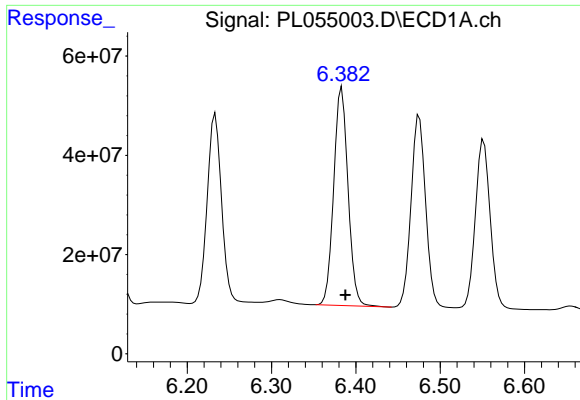
#14 Endrin

R.T.: 6.111 min
 Delta R.T.: -0.004 min
 Response: 582460657
 Conc: 45.74 ng/ml



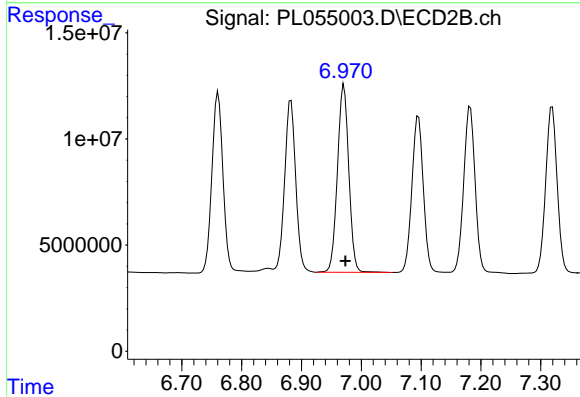
#14 Endrin

R.T.: 6.761 min
 Delta R.T.: -0.003 min
 Response: 107875059
 Conc: 48.69 ng/ml

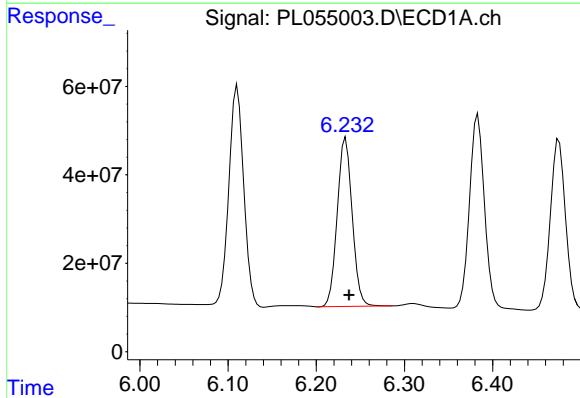


#15 Endosulfan II
 R.T.: 6.383 min
 Delta R.T.: -0.004 min
 Response: 519259990
 Conc: 42.91 ng/ml

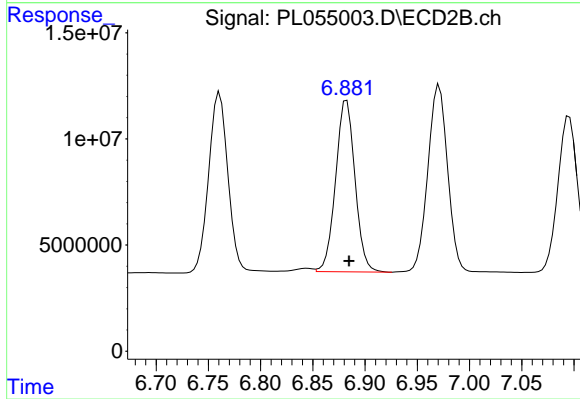
Instrument :
 ECD_L
 ClientSampled :
 TP-1MS



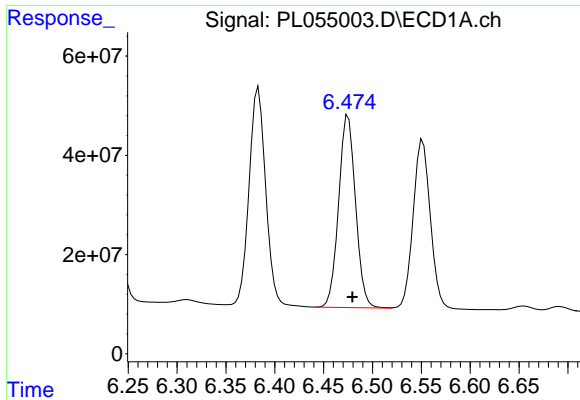
#15 Endosulfan II
 R.T.: 6.971 min
 Delta R.T.: -0.002 min
 Response: 116882931
 Conc: 49.72 ng/ml



#16 4,4'-DDD
 R.T.: 6.233 min
 Delta R.T.: -0.004 min
 Response: 448934931
 Conc: 45.96 ng/ml

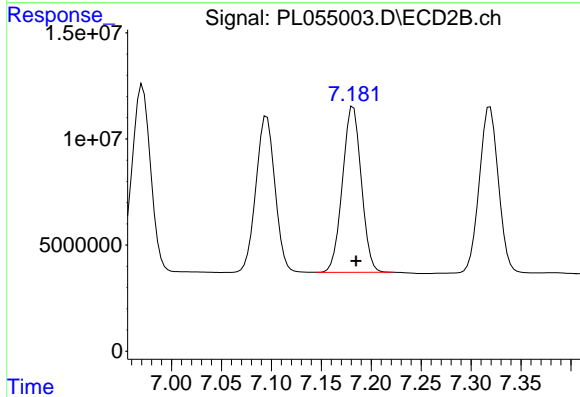


#16 4,4'-DDD
 R.T.: 6.883 min
 Delta R.T.: -0.002 min
 Response: 104053016
 Conc: 54.19 ng/ml

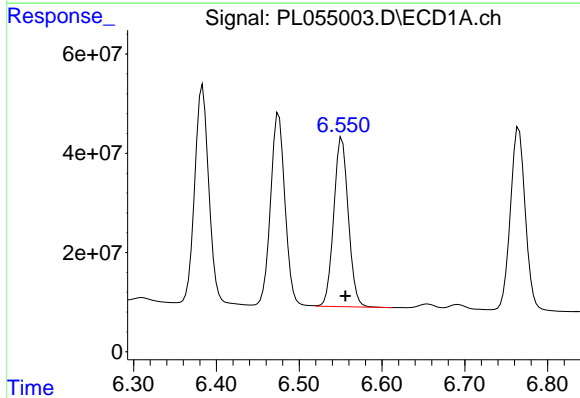


#17 4,4'-DDT
 R.T.: 6.475 min
 Delta R.T.: -0.004 min
 Response: 467738258
 Conc: 44.65 ng/ml

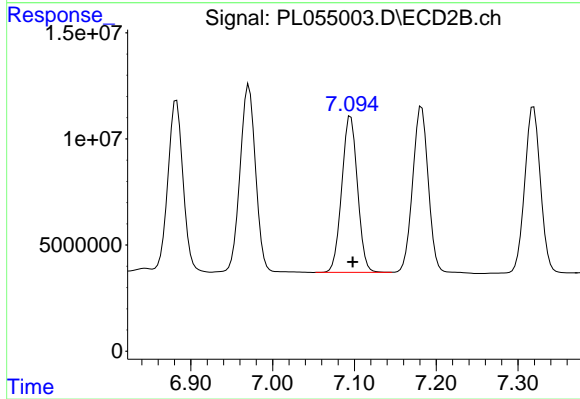
Instrument :
 ECD_L
 ClientSampled :
 TP-1MS



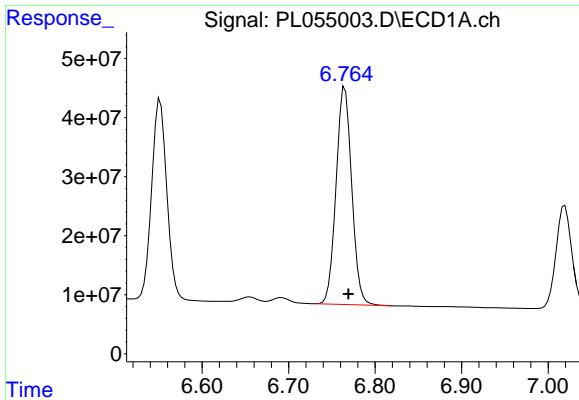
#17 4,4'-DDT
 R.T.: 7.182 min
 Delta R.T.: -0.003 min
 Response: 102500016
 Conc: 51.73 ng/ml



#18 Endrin aldehyde
 R.T.: 6.552 min
 Delta R.T.: -0.004 min
 Response: 416468371
 Conc: 42.06 ng/ml



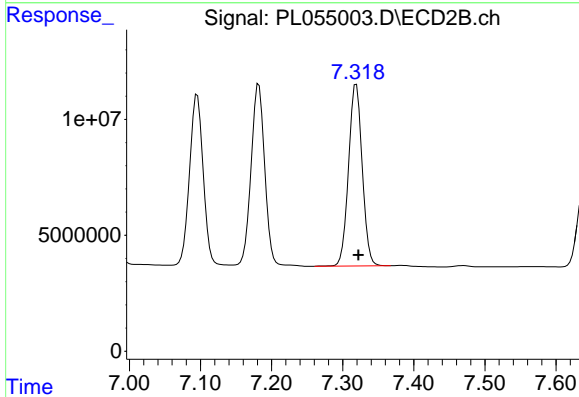
#18 Endrin aldehyde
 R.T.: 7.095 min
 Delta R.T.: -0.002 min
 Response: 97675888
 Conc: 49.83 ng/ml



#19 Endosulfan Sulfate

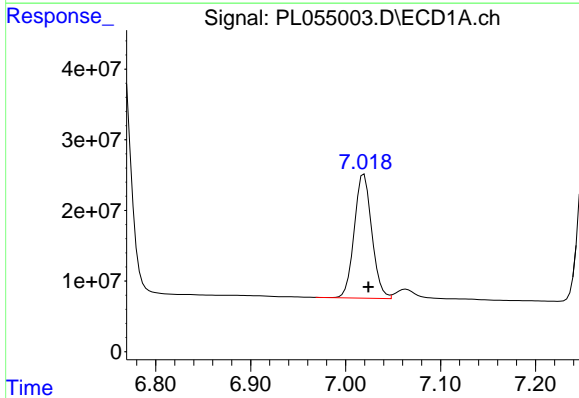
R.T.: 6.765 min
Delta R.T.: -0.004 min
Response: 460525374
Conc: 43.00 ng/ml

Instrument :
ECD_L
ClientSampleId :
TP-1MS



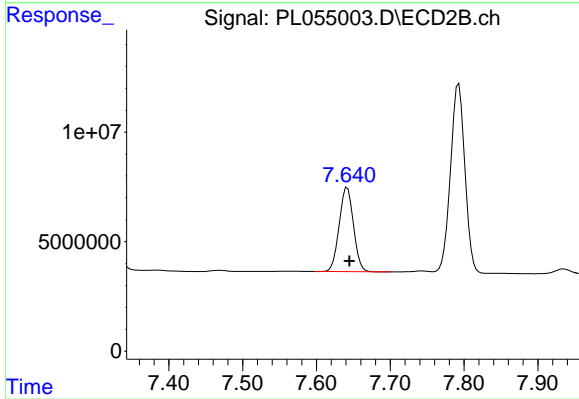
#19 Endosulfan Sulfate

R.T.: 7.319 min
Delta R.T.: -0.003 min
Response: 104689545
Conc: 49.37 ng/ml



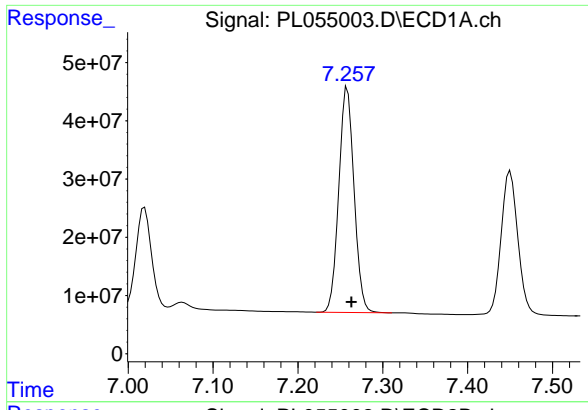
#20 Methoxychlor

R.T.: 7.019 min
Delta R.T.: -0.005 min
Response: 225184924
Conc: 44.93 ng/ml



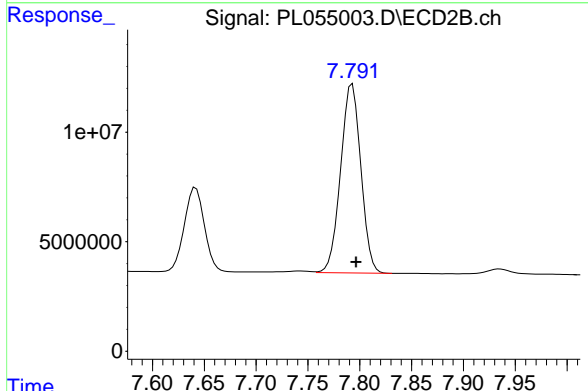
#20 Methoxychlor

R.T.: 7.642 min
Delta R.T.: -0.003 min
Response: 51640823
Conc: 45.27 ng/ml

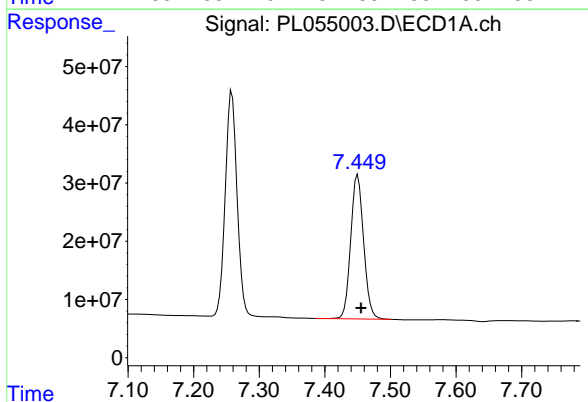


#21 Endrin ketone
 R.T.: 7.258 min
 Delta R.T.: -0.005 min
 Response: 483140314
 Conc: 44.45 ng/ml

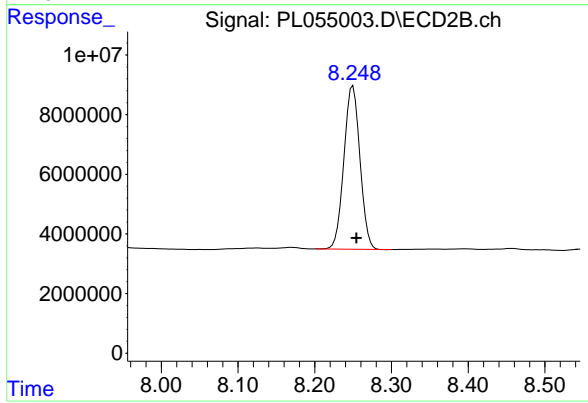
Instrument :
 ECD_L
 ClientSampled :
 TP-1MS



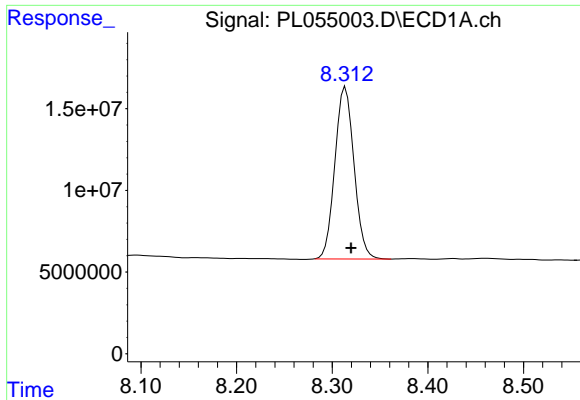
#21 Endrin ketone
 R.T.: 7.793 min
 Delta R.T.: -0.003 min
 Response: 117111556
 Conc: 52.03 ng/ml



#22 Mirex
 R.T.: 7.450 min
 Delta R.T.: -0.005 min
 Response: 338305969
 Conc: 41.67 ng/ml



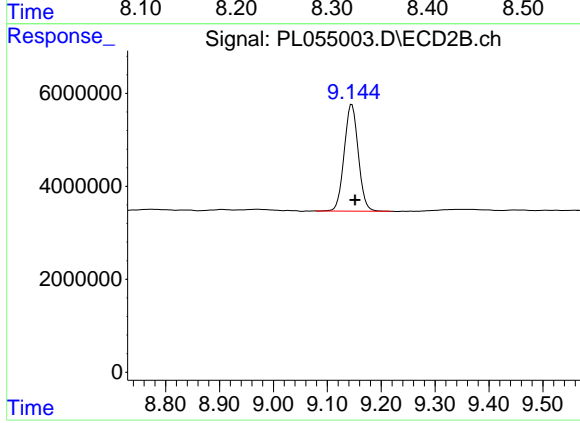
#22 Mirex
 R.T.: 8.250 min
 Delta R.T.: -0.004 min
 Response: 79901227
 Conc: 46.23 ng/ml



#28 Decachlorobiphenyl

R.T.: 8.314 min
Delta R.T.: -0.006 min
Response: 146581281
Conc: 15.31 ng/ml

Instrument :
ECD_L
ClientSampleId :
TP-1MS



#28 Decachlorobiphenyl

R.T.: 9.146 min
Delta R.T.: -0.006 min
Response: 41631967
Conc: 17.37 ng/ml