

Data Path : Z:\pestpcbsrv\HPCHEM1\ECD_L\Data\PL121620\
 Data File : PL063627.D
 Signal(s) : Signal #1: ECD1A.ch Signal #2: ECD2B.ch
 Acq On : 17 Dec 2020 01:53
 Operator : DD\AJ
 Sample : PSTDICC100
 Misc :
 ALS Vial : 5 Sample Multiplier: 1

Instrument :
 ECD_L
 ClientSampleId :
 PSTDICC100

Integration File signal 1: autoint1.e
 Integration File signal 2: autoint2.e
 Quant Time: Dec 17 07:27:02 2020
 Quant Method : Z:\pestpcbsrv\HPCHEM1\ECD_L\methods\PL121620.M
 Quant Title : GC Extractables
 QLast Update : Thu Dec 17 07:26:02 2020
 Response via : Initial Calibration
 Integrator: ChemStation

Volume Inj. : 1 µl
 Signal #1 Phase : ZB-MR2 Signal #2 Phase: ZB-MR1
 Signal #1 Info : 30M x 0.32mm x0.2 Signal #2 Info : 30M x 0.32mm x0.5µm

	Compound	RT#1	RT#2	Resp#1	Resp#2	ng/ml	ng/ml

System Monitoring Compounds							
1)	SA Tetrachlo...	3.479	4.148	207.4E6	331.6E6	107.008	104.310
28)	SA Decachlor...	8.229	9.340	195.5E6	256.2E6	93.519	98.153
Target Compounds							
2)	A alpha-BHC	3.918	4.553	345.5E6	528.2E6	111.046	116.806
3)	MA gamma-BHC...	4.201	4.846	324.6E6	479.6E6	110.400	113.719
4)	MA Heptachlor	4.504	5.362	323.9E6	443.6E6	107.609	108.309
5)	MB Aldrin	4.750	5.673	303.1E6	415.1E6	108.090	110.944
6)	B beta-BHC	4.449	5.021	128.3E6	204.1E6	103.916	102.540
7)	B delta-BHC	4.654	5.245	316.8E6	443.4E6	100.544	112.007
8)	B Heptachlo...	5.192	6.067	280.9E6	379.2E6	104.583	105.714
9)	A Endosulfan I	5.531	6.431	260.9E6	343.2E6	103.412	110.040
10)	B gamma-Chl...	5.419	6.303	284.6E6	382.9E6	104.902	110.595
11)	B alpha-Chl...	5.478	6.376	280.7E6	372.8E6	104.408	112.082
12)	B 4,4'-DDE	5.643	6.532	263.5E6	352.0E6	108.081	111.094
13)	MA Dieldrin	5.773	6.692	276.6E6	367.1E6	106.398	107.631
14)	MA Endrin	6.029	6.916	244.8E6	279.9E6	101.550	105.400
15)	B Endosulfa...	6.301	7.128	241.5E6	307.1E6	102.337	106.774
16)	A 4,4'-DDD	6.157	7.031	218.0E6	287.5E6	106.165	108.324
17)	MA 4,4'-DDT	6.397	7.331	209.1E6	265.3E6	106.223	109.152
18)	B Endrin al...	6.469	7.254	197.0E6	254.8E6	97.386	106.091
19)	B Endosulfa...	6.681	7.477	229.2E6	297.1E6	99.811	104.046
20)	A Methoxychlor	6.945	7.790	113.3E6	149.2E6	97.657	103.852
21)	B Endrin ke...	7.169	7.959	267.7E6	314.8E6	99.995	105.628
22)	Mirex	7.358	8.413	181.8E6	214.6E6	95.944	98.801

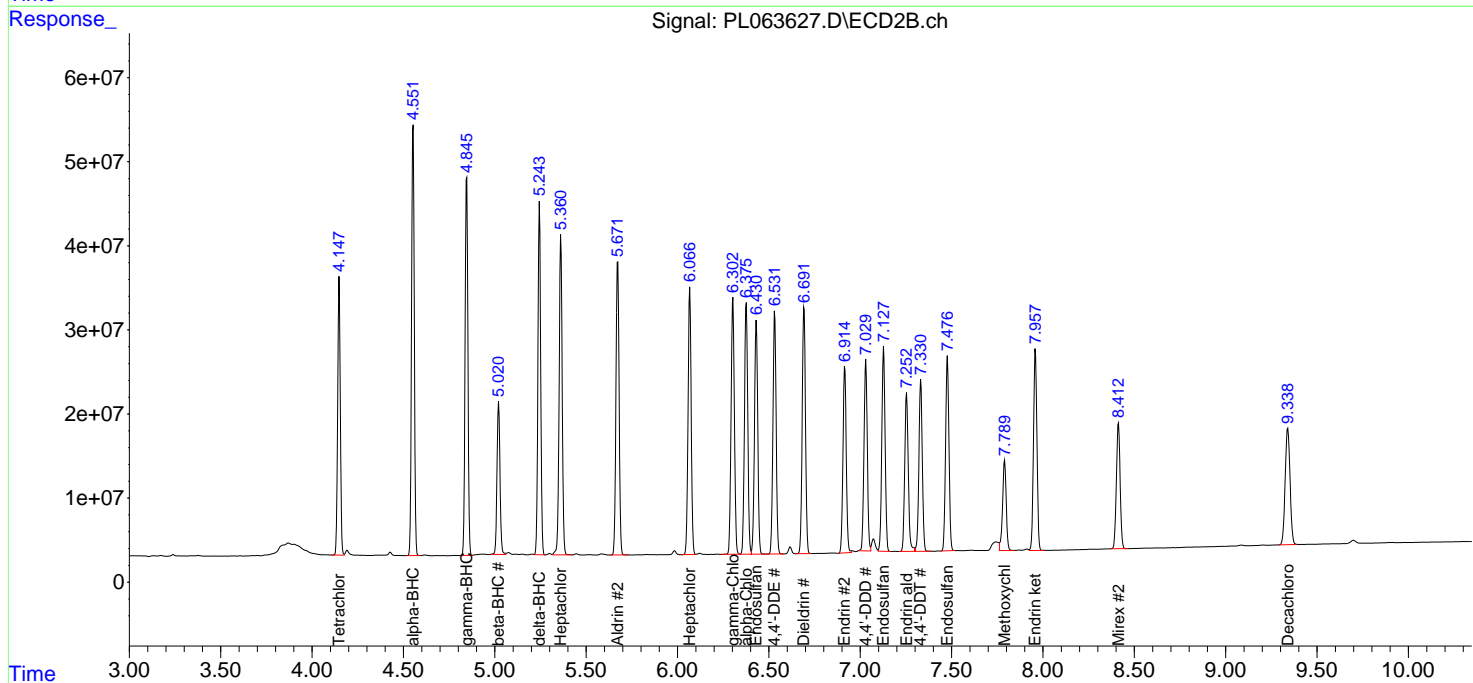
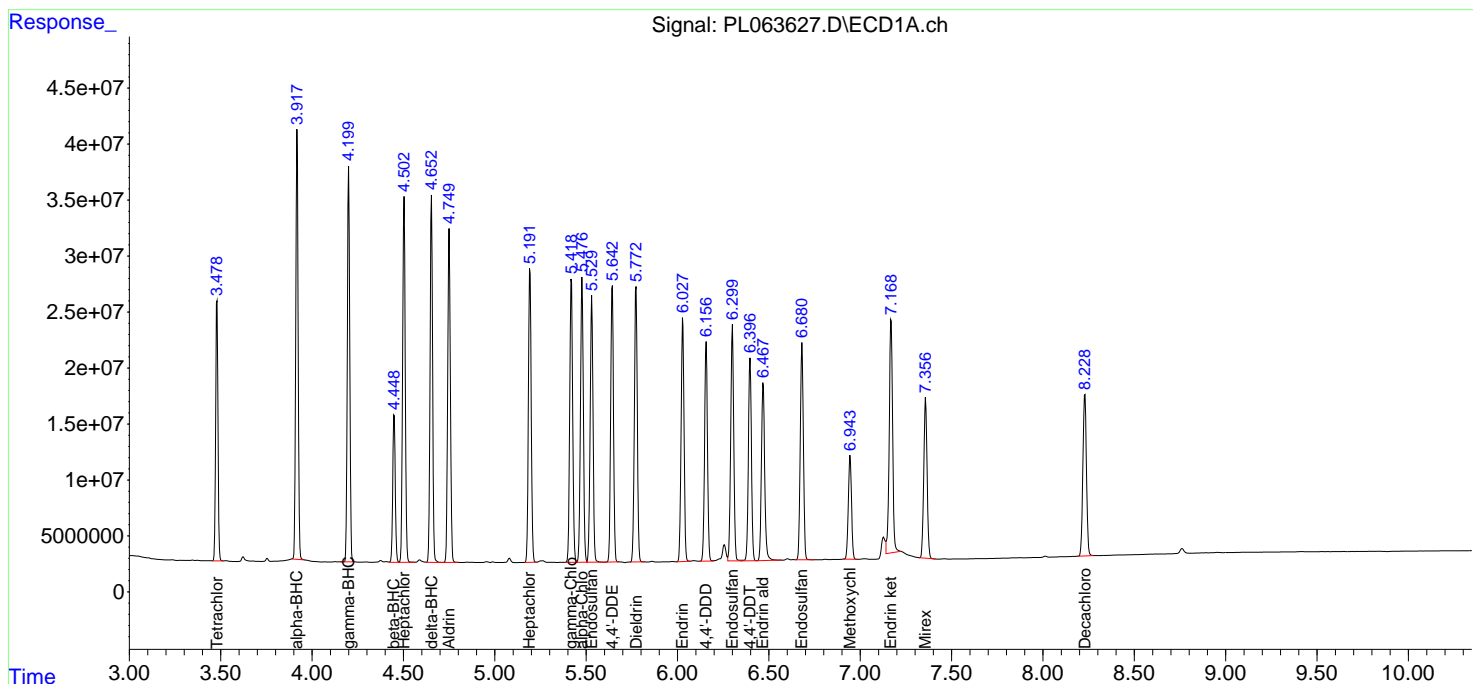
(f)=RT Delta > 1/2 Window (#)=Amounts differ by > 25% (m)=manual int.

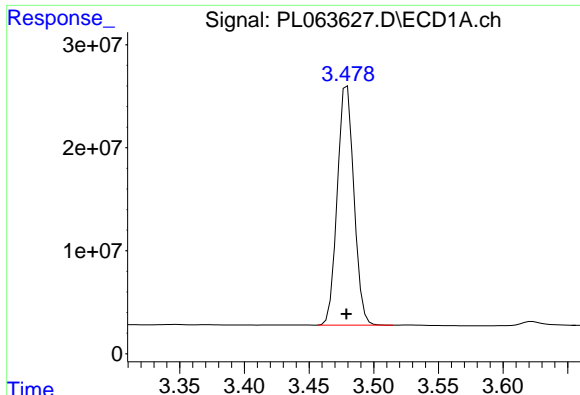
Data Path : Z:\pestpcbsrv\HPCHEM1\ECD_L\Data\PL121620\
 Data File : PL063627.D
 Signal(s) : Signal #1: ECD1A.ch Signal #2: ECD2B.ch
 Acq On : 17 Dec 2020 01:53
 Operator : DD\AJ
 Sample : PSTDICC100
 Misc :
 ALS Vial : 5 Sample Multiplier: 1

Instrument :
 ECD_L
 ClientSampleId :
 PSTDICC100

Integration File signal 1: autoint1.e
 Integration File signal 2: autoint2.e
 Quant Time: Dec 17 07:27:02 2020
 Quant Method : Z:\pestpcbsrv\HPCHEM1\ECD_L\methods\PL121620.M
 Quant Title : GC Extractables
 QLast Update : Thu Dec 17 07:26:02 2020
 Response via : Initial Calibration
 Integrator: ChemStation

Volume Inj. : 1 µl
 Signal #1 Phase : ZB-MR2 Signal #2 Phase: ZB-MR1
 Signal #1 Info : 30M x 0.32mm x0.2 Signal #2 Info : 30M x 0.32mm x0.5µm

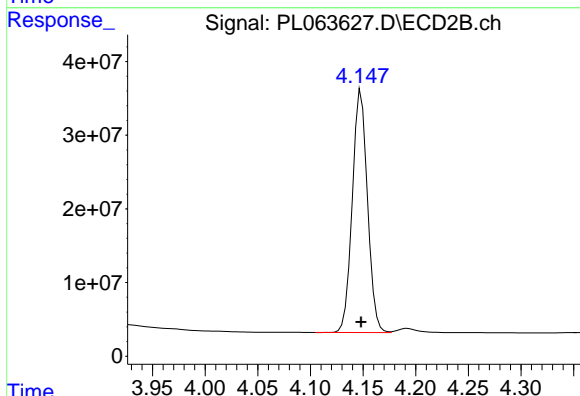




#1 Tetrachloro-m-xylene

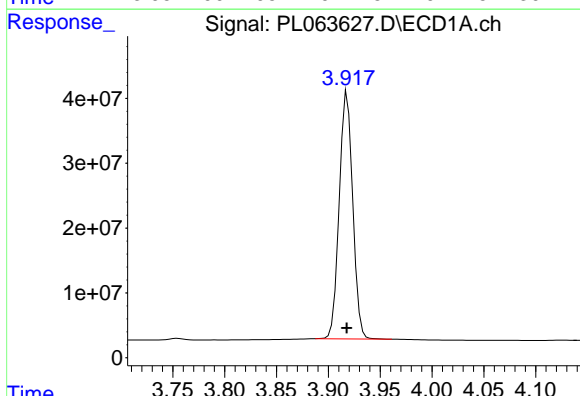
R.T.: 3.479 min
 Delta R.T.: 0.000 min
 Response: 207370704
 Conc: 107.01 ng/ml

Instrument :
 ECD_L
 ClientSampleId :
 PSTDICC100



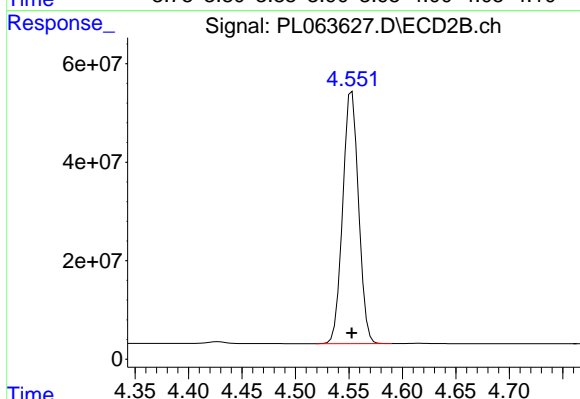
#1 Tetrachloro-m-xylene

R.T.: 4.148 min
 Delta R.T.: 0.000 min
 Response: 331616596
 Conc: 104.31 ng/ml



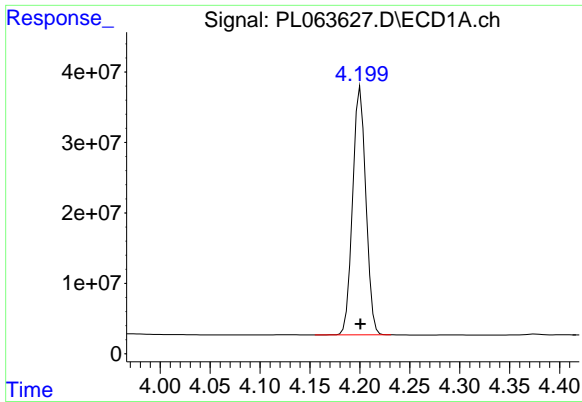
#2 alpha-BHC

R.T.: 3.918 min
 Delta R.T.: 0.000 min
 Response: 345478324
 Conc: 111.05 ng/ml



#2 alpha-BHC

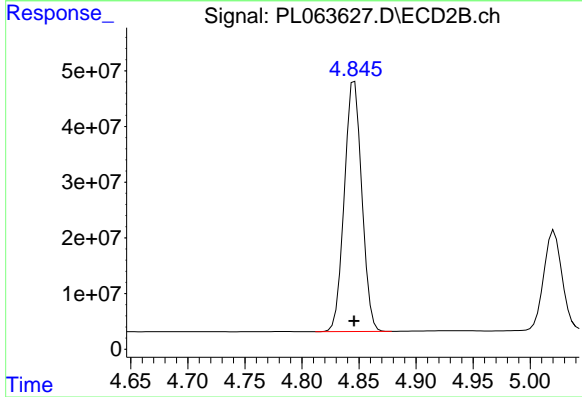
R.T.: 4.553 min
 Delta R.T.: 0.000 min
 Response: 528233752
 Conc: 116.81 ng/ml



#3 gamma-BHC (Lindane)

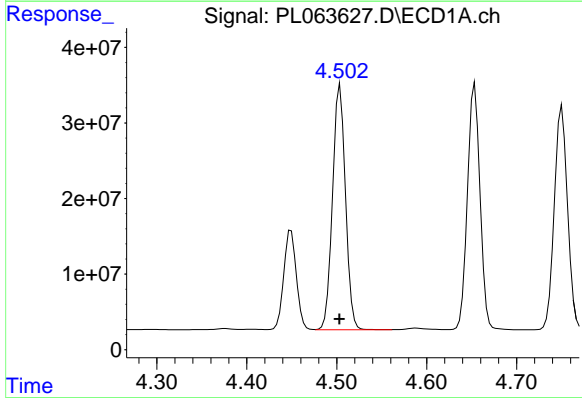
R.T.: 4.201 min
 Delta R.T.: 0.000 min
 Response: 324620159
 Conc: 110.40 ng/ml

Instrument :
 ECD_L
 ClientSampleId :
 PSTDICC100



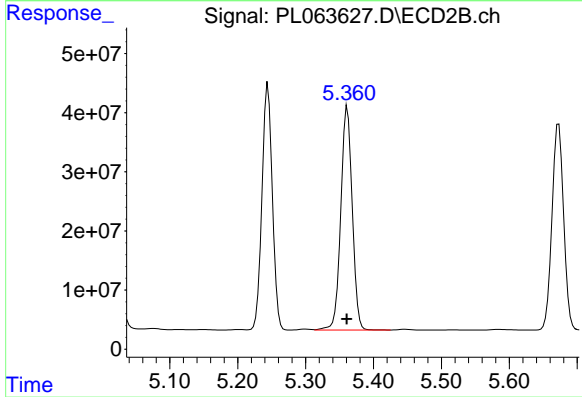
#3 gamma-BHC (Lindane)

R.T.: 4.846 min
 Delta R.T.: 0.000 min
 Response: 479585955
 Conc: 113.72 ng/ml



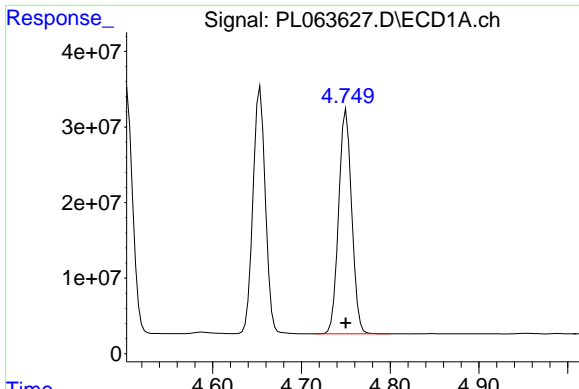
#4 Heptachlor

R.T.: 4.504 min
 Delta R.T.: 0.000 min
 Response: 323924812
 Conc: 107.61 ng/ml



#4 Heptachlor

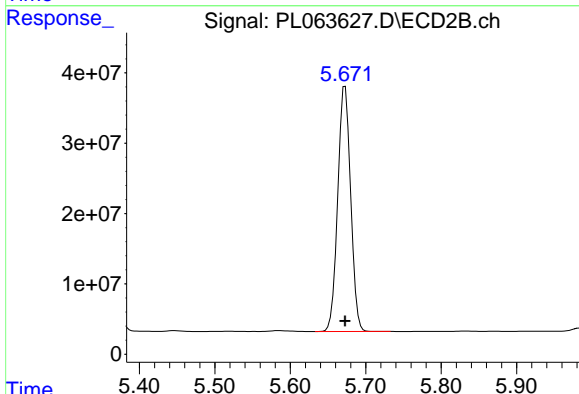
R.T.: 5.362 min
 Delta R.T.: 0.000 min
 Response: 443617956
 Conc: 108.31 ng/ml



#5 Aldrin

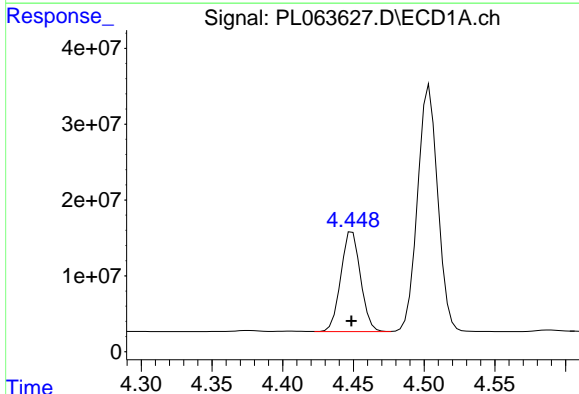
R.T.: 4.750 min
 Delta R.T.: 0.000 min
 Response: 303098364
 Conc: 108.09 ng/ml

Instrument :
 ECD_L
 ClientSampleId :
 PSTDICC100



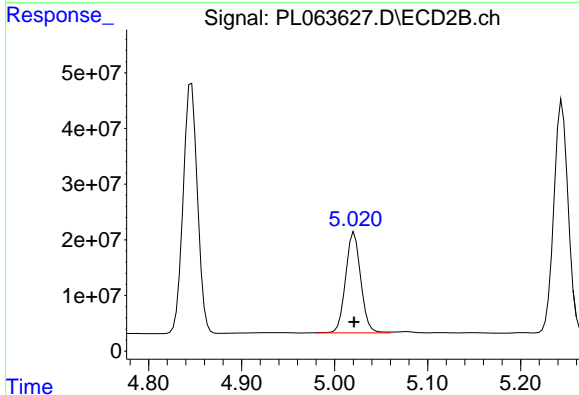
#5 Aldrin

R.T.: 5.673 min
 Delta R.T.: 0.000 min
 Response: 415130933
 Conc: 110.94 ng/ml



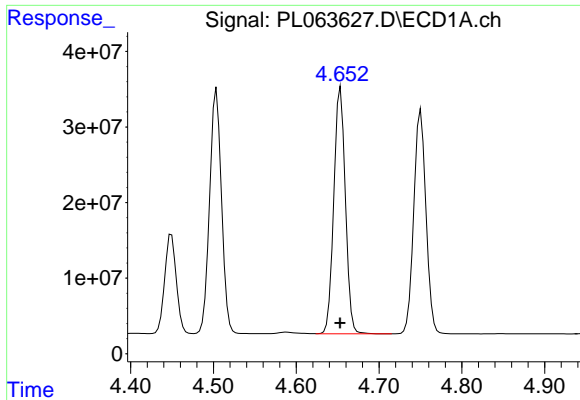
#6 beta-BHC

R.T.: 4.449 min
 Delta R.T.: 0.000 min
 Response: 128282165
 Conc: 103.92 ng/ml



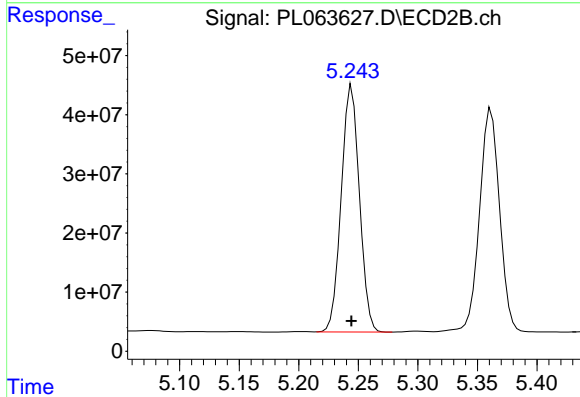
#6 beta-BHC

R.T.: 5.021 min
 Delta R.T.: 0.000 min
 Response: 204108450
 Conc: 102.54 ng/ml

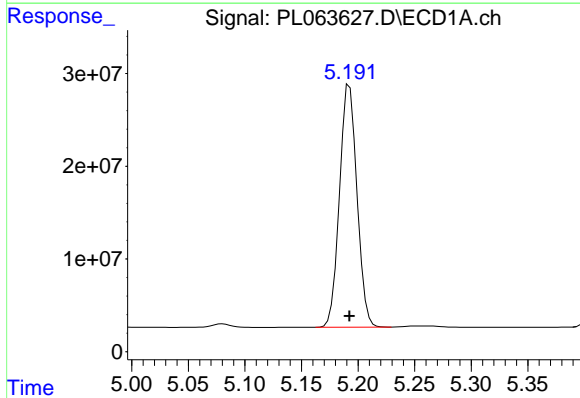


#7 delta-BHC
 R.T.: 4.654 min
 Delta R.T.: 0.000 min
 Response: 316811500
 Conc: 100.54 ng/ml

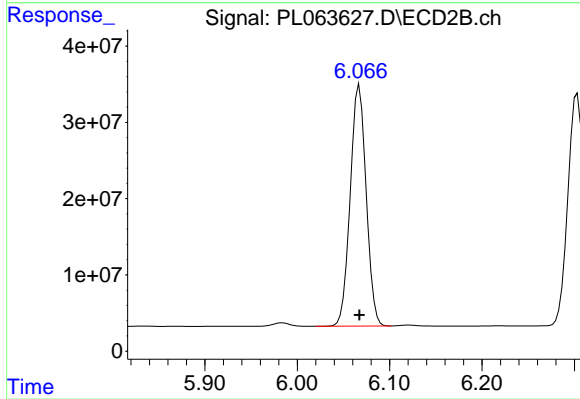
Instrument :
 ECD_L
 ClientSampled :
 PSTDICC100



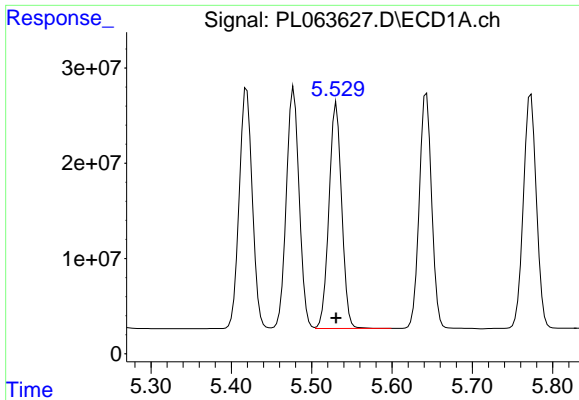
#7 delta-BHC
 R.T.: 5.245 min
 Delta R.T.: 0.000 min
 Response: 443358007
 Conc: 112.01 ng/ml



#8 Heptachlor epoxide
 R.T.: 5.192 min
 Delta R.T.: 0.000 min
 Response: 280899339
 Conc: 104.58 ng/ml

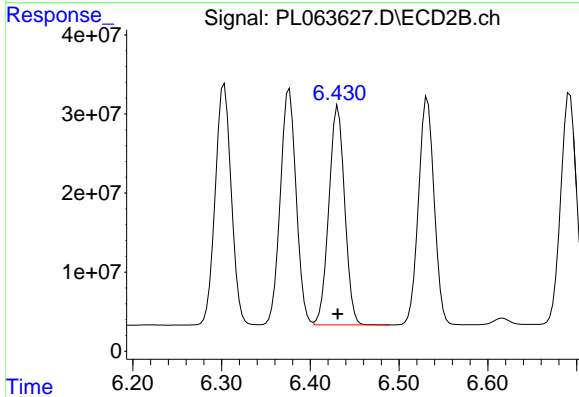


#8 Heptachlor epoxide
 R.T.: 6.067 min
 Delta R.T.: 0.000 min
 Response: 379176956
 Conc: 105.71 ng/ml

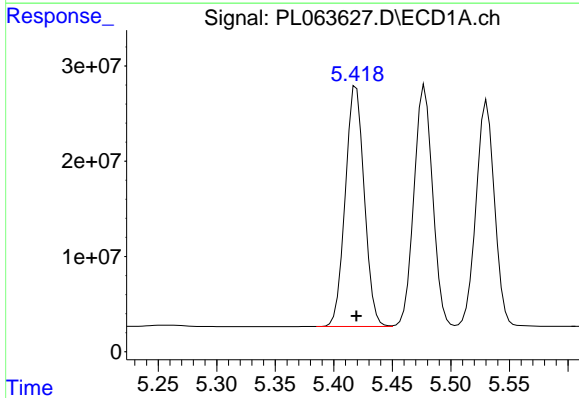


#9 Endosulfan I
 R.T.: 5.531 min
 Delta R.T.: 0.000 min
 Response: 260876157
 Conc: 103.41 ng/ml

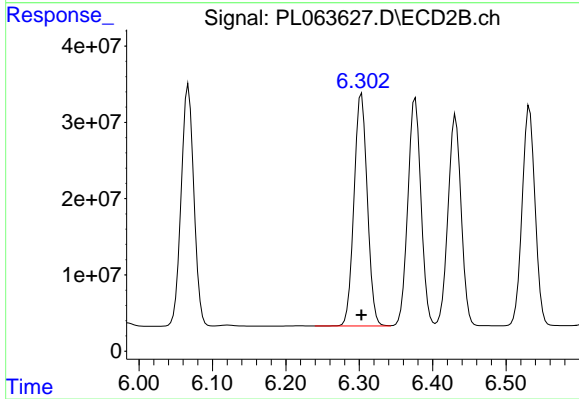
Instrument :
 ECD_L
 ClientSampleId :
 PSTDICC100



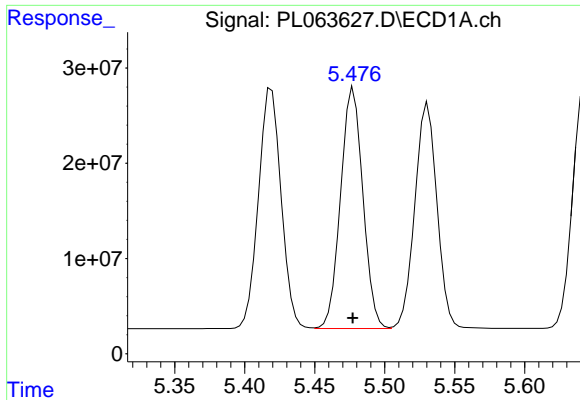
#9 Endosulfan I
 R.T.: 6.431 min
 Delta R.T.: 0.000 min
 Response: 343159591
 Conc: 110.04 ng/ml



#10 gamma-Chlordane
 R.T.: 5.419 min
 Delta R.T.: 0.000 min
 Response: 284615442
 Conc: 104.90 ng/ml

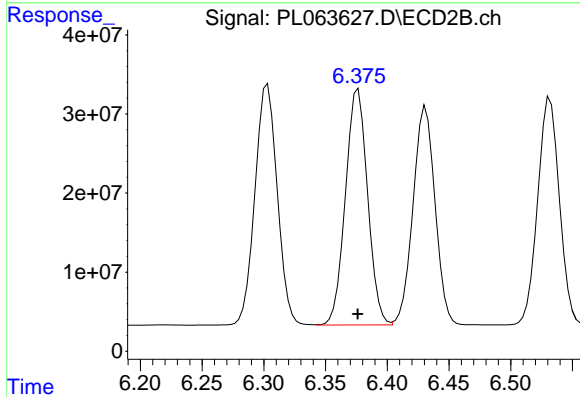


#10 gamma-Chlordane
 R.T.: 6.303 min
 Delta R.T.: 0.000 min
 Response: 382885166
 Conc: 110.60 ng/ml

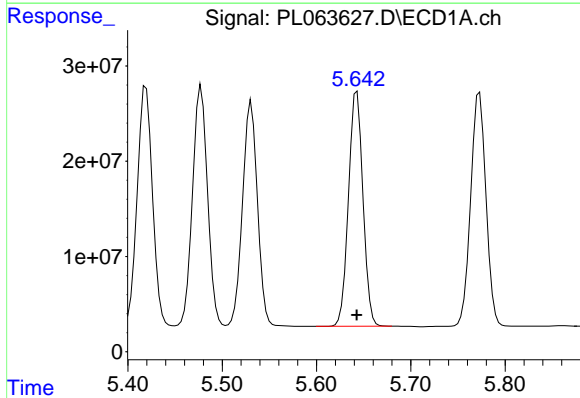


#11 alpha-Chlordane
R.T.: 5.478 min
Delta R.T.: 0.000 min
Response: 280668859
Conc: 104.41 ng/ml

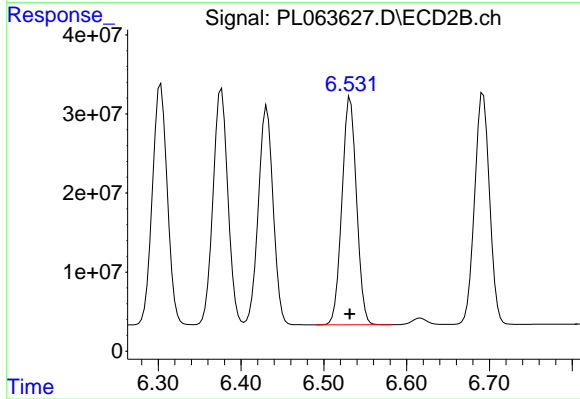
Instrument :
ECD_L
ClientSampled :
PSTDICC100



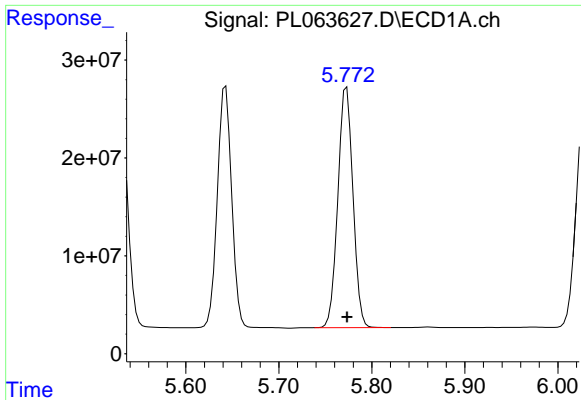
#11 alpha-Chlordane
R.T.: 6.376 min
Delta R.T.: 0.000 min
Response: 372795677
Conc: 112.08 ng/ml



#12 4,4'-DDE
R.T.: 5.643 min
Delta R.T.: 0.000 min
Response: 263547436
Conc: 108.08 ng/ml



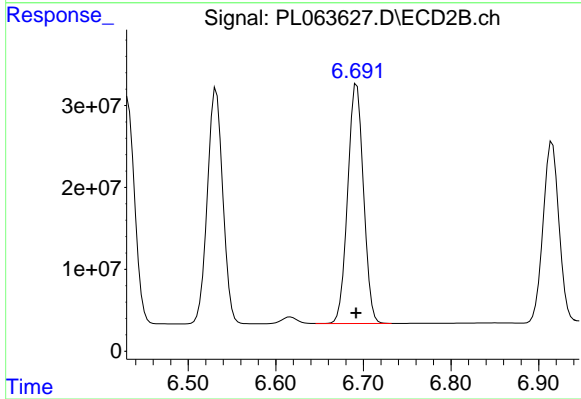
#12 4,4'-DDE
R.T.: 6.532 min
Delta R.T.: 0.000 min
Response: 352018440
Conc: 111.09 ng/ml



#13 Dieldrin

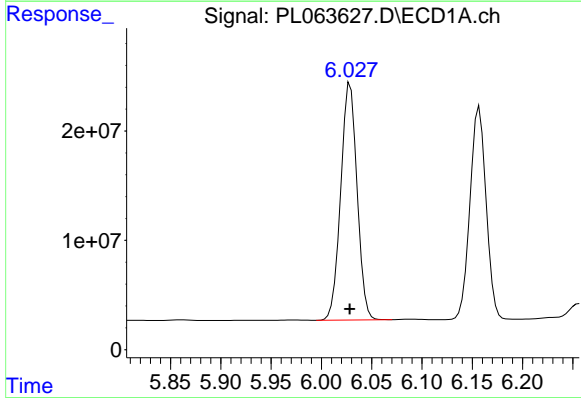
R.T.: 5.773 min
 Delta R.T.: 0.000 min
 Response: 276551959
 Conc: 106.40 ng/ml

Instrument :
 ECD_L
 ClientSampled :
 PSTDICC100



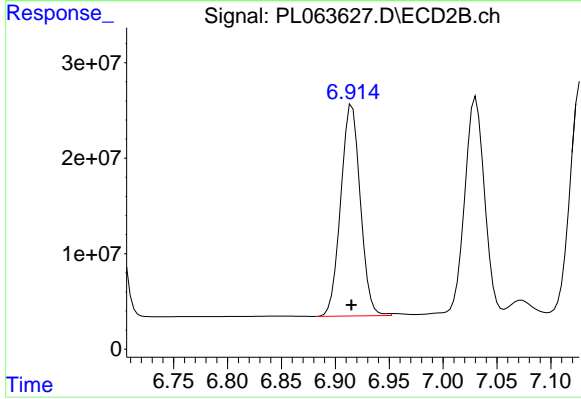
#13 Dieldrin

R.T.: 6.692 min
 Delta R.T.: 0.000 min
 Response: 367081063
 Conc: 107.63 ng/ml



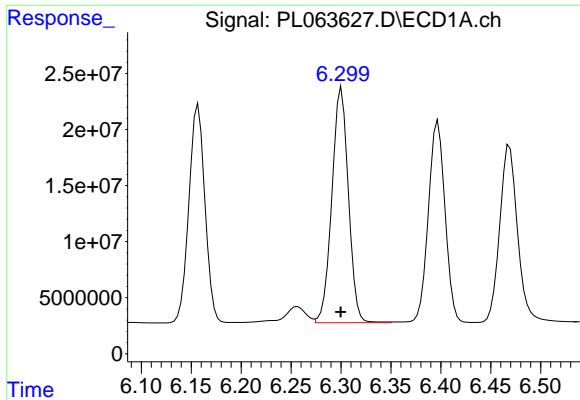
#14 Endrin

R.T.: 6.029 min
 Delta R.T.: 0.000 min
 Response: 244796626
 Conc: 101.55 ng/ml



#14 Endrin

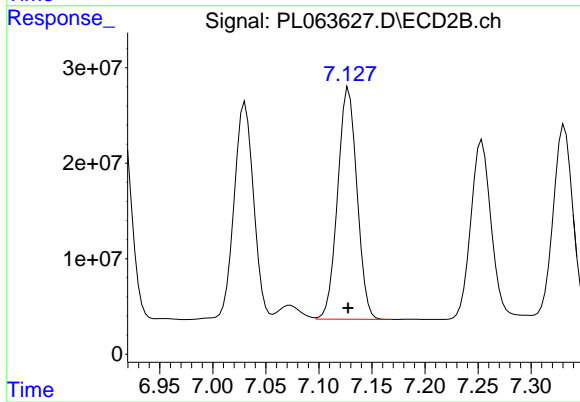
R.T.: 6.916 min
 Delta R.T.: 0.000 min
 Response: 279894987
 Conc: 105.40 ng/ml



#15 Endosulfan II

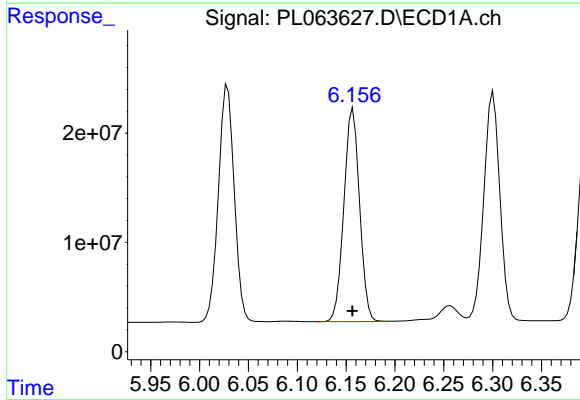
R.T.: 6.301 min
Delta R.T.: 0.000 min
Response: 241502479
Conc: 102.34 ng/ml

Instrument :
ECD_L
ClientSampleId :
PSTDICC100



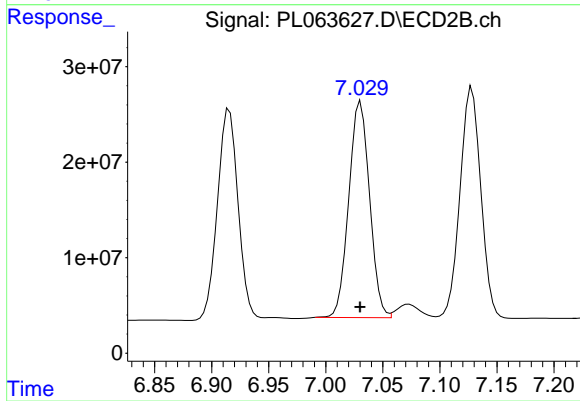
#15 Endosulfan II

R.T.: 7.128 min
Delta R.T.: 0.000 min
Response: 307077465
Conc: 106.77 ng/ml



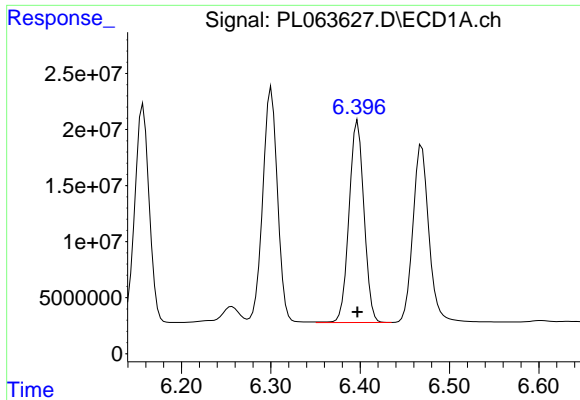
#16 4,4'-DDD

R.T.: 6.157 min
Delta R.T.: 0.000 min
Response: 217972162
Conc: 106.17 ng/ml



#16 4,4'-DDD

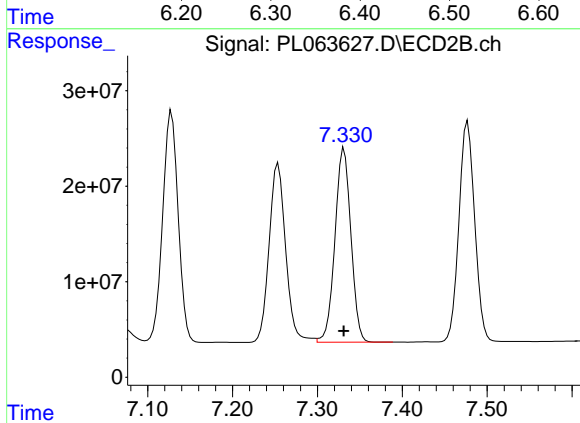
R.T.: 7.031 min
Delta R.T.: 0.000 min
Response: 287473582
Conc: 108.32 ng/ml



#17 4,4'-DDT

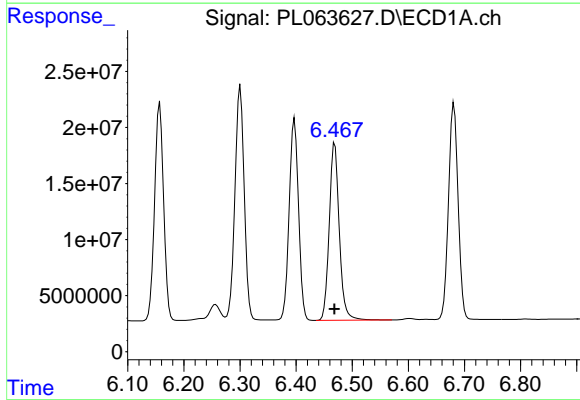
R.T.: 6.397 min
Delta R.T.: 0.000 min
Response: 209146637
Conc: 106.22 ng/ml

Instrument :
ECD_L
ClientSampleId :
PSTDICC100



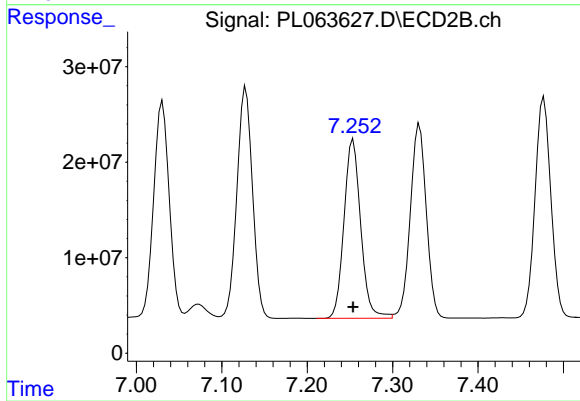
#17 4,4'-DDT

R.T.: 7.331 min
Delta R.T.: 0.000 min
Response: 265269704
Conc: 109.15 ng/ml



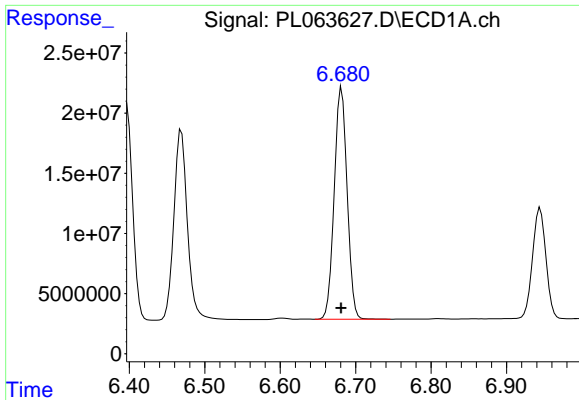
#18 Endrin aldehyde

R.T.: 6.469 min
Delta R.T.: 0.000 min
Response: 196980139
Conc: 97.39 ng/ml



#18 Endrin aldehyde

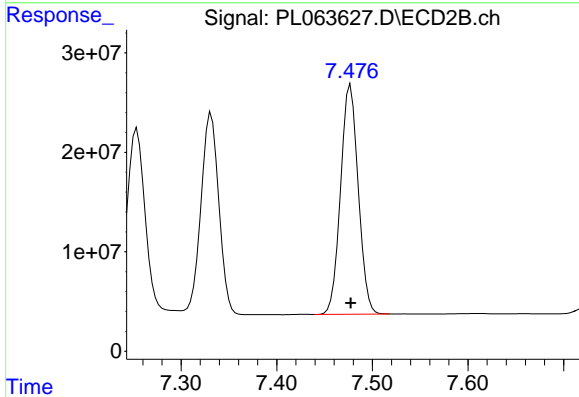
R.T.: 7.254 min
Delta R.T.: 0.000 min
Response: 254789914
Conc: 106.09 ng/ml



#19 Endosulfan Sulfate

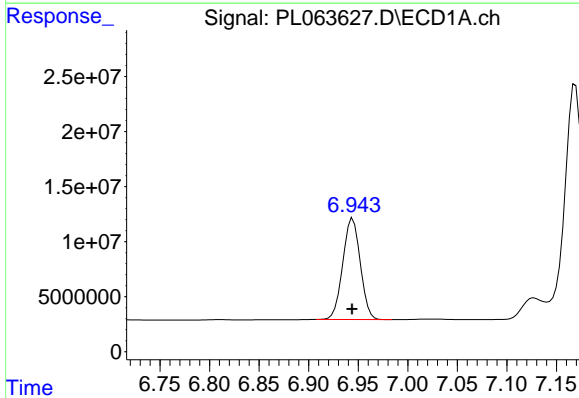
R.T.: 6.681 min
 Delta R.T.: 0.000 min
 Response: 229193237
 Conc: 99.81 ng/ml

Instrument :
 ECD_L
 ClientSampleId :
 PSTDICC100



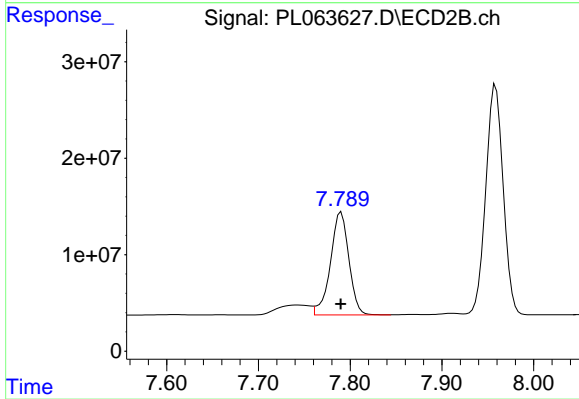
#19 Endosulfan Sulfate

R.T.: 7.477 min
 Delta R.T.: 0.000 min
 Response: 297140182
 Conc: 104.05 ng/ml



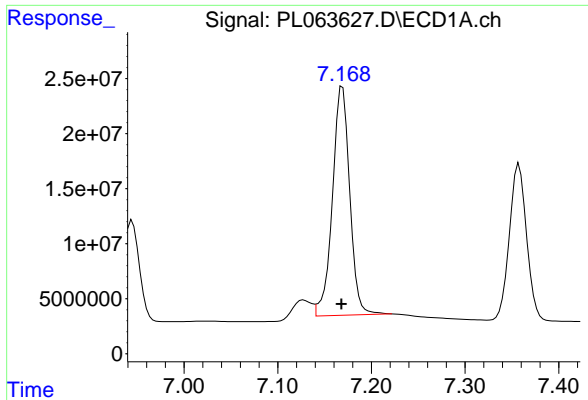
#20 Methoxychlor

R.T.: 6.945 min
 Delta R.T.: 0.000 min
 Response: 113292262
 Conc: 97.66 ng/ml



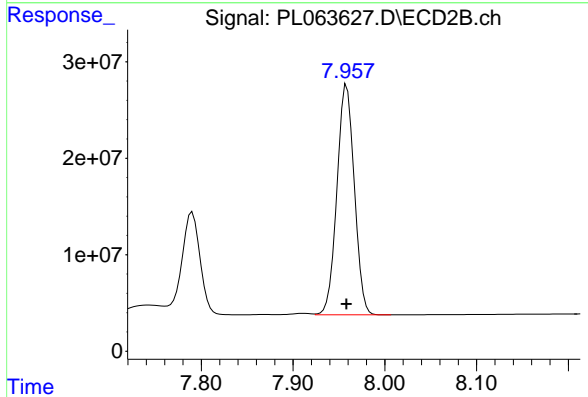
#20 Methoxychlor

R.T.: 7.790 min
 Delta R.T.: 0.000 min
 Response: 149230068
 Conc: 103.85 ng/ml

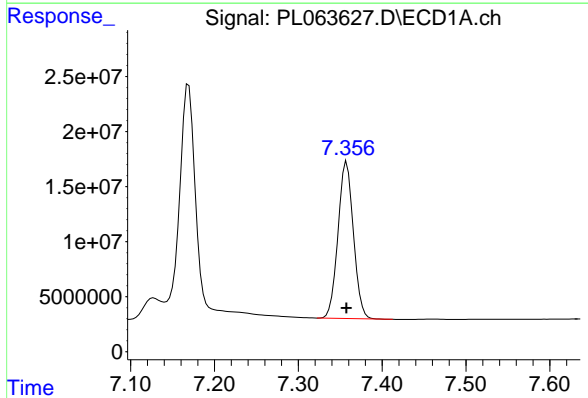


#21 Endrin ketone
 R.T.: 7.169 min
 Delta R.T.: 0.001 min
 Response: 267700366
 Conc: 100.00 ng/ml

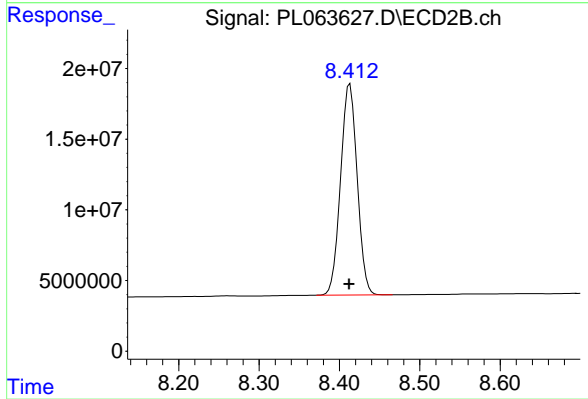
Instrument :
 ECD_L
 ClientSampleId :
 PSTDICC100



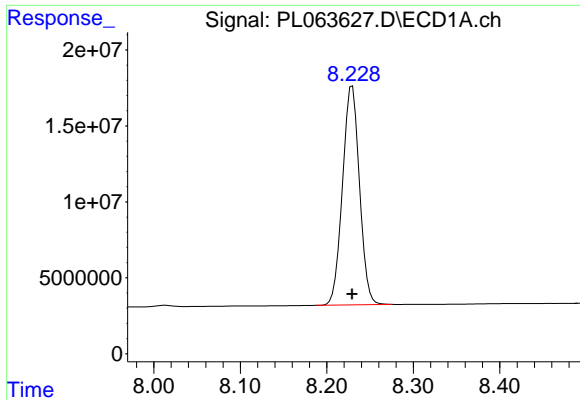
#21 Endrin ketone
 R.T.: 7.959 min
 Delta R.T.: 0.000 min
 Response: 314750924
 Conc: 105.63 ng/ml



#22 Mirex
 R.T.: 7.358 min
 Delta R.T.: 0.000 min
 Response: 181750911
 Conc: 95.94 ng/ml



#22 Mirex
 R.T.: 8.413 min
 Delta R.T.: 0.001 min
 Response: 214578674
 Conc: 98.80 ng/ml



#28 Decachlorobiphenyl

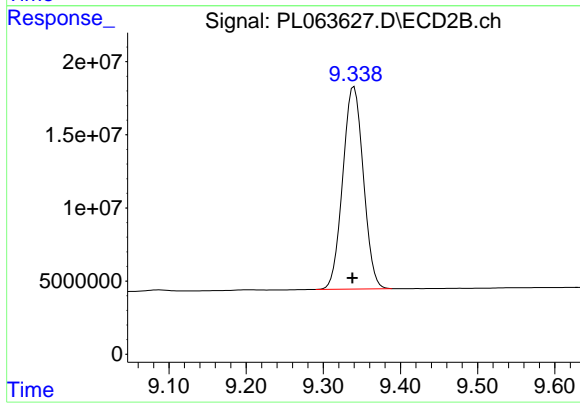
R.T.: 8.229 min

Delta R.T.: 0.000 min

Response: 195486987

Conc: 93.52 ng/ml

Instrument :
ECD_L
ClientSampleId :
PSTDICC100



#28 Decachlorobiphenyl

R.T.: 9.340 min

Delta R.T.: 0.002 min

Response: 256180642

Conc: 98.15 ng/ml