

Data Path : Z:\pestpcbsrv\HPCHEM1\ECD_L\Data\PL121620\
 Data File : PL063640.D
 Signal(s) : Signal #1: ECD1A.ch Signal #2: ECD2B.ch
 Acq On : 17 Dec 2020 05:05
 Operator : DD\AJ
 Sample : PTOXICC250
 Misc :
 ALS Vial : 18 Sample Multiplier: 1

Instrument :
 ECD_L
 ClientSampleId :

Integration File signal 1: autoint1.e
 Integration File signal 2: autoint2.e
 Quant Time: Dec 17 09:32:09 2020
 Quant Method : Z:\pestpcbsrv\HPCHEM1\ECD_L\methods\LTX121620.M
 Quant Title : GC Extractables
 QLast Update : Thu Dec 17 09:30:35 2020
 Response via : Initial Calibration
 Integrator: ChemStation

Volume Inj. : 2 µl
 Signal #1 Phase : Rtx-CLPesticide 1 Signal #2 Phase: Rtx-CLPesticide 1
 Signal #1 Info : 30M x 0.32mm x0.3 Signal #2 Info : 30M x 0.32mm x 0.25µm

Compound	RT#1	RT#2	Resp#1	Resp#2	ng/ml	ng/ml

System Monitoring Compounds						
1) SA Tetrachlo...	3.480	4.149	51945368	81001139	24.830	24.325
7) SA Decachlor...	8.228	9.340	57342903	69009140	26.603	25.724
Target Compounds						
2) Toxaphene-1	5.734	6.782	4345175	6143598	271.603	255.115
3) Toxaphene-2	5.894	7.296	3505147	7337983	233.749	287.868
4) Toxaphene-3	6.332	7.371	10352973	10667296	252.945	249.917
5) Toxaphene-4	6.578	7.460	11227621	10788857	257.067	253.361
6) Toxaphene-5	7.061	7.882	10278506	11285112	255.518	250.205

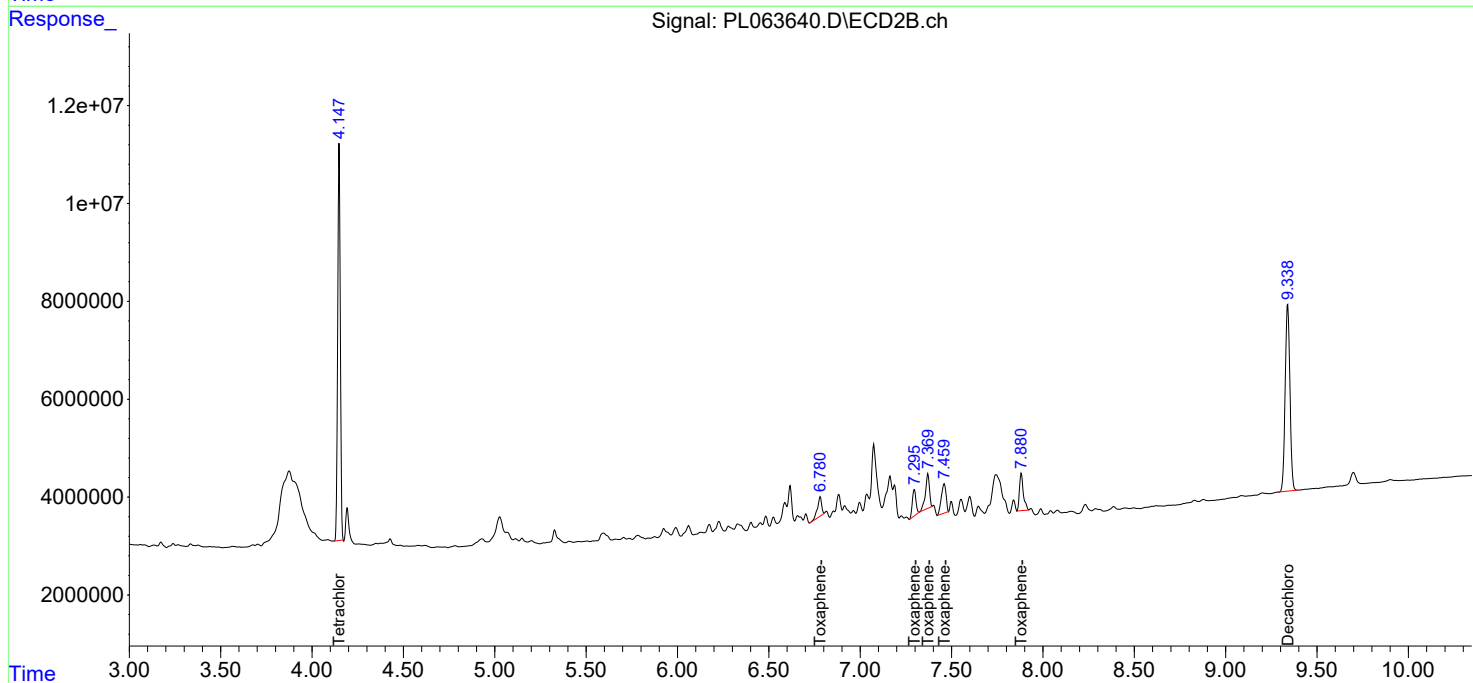
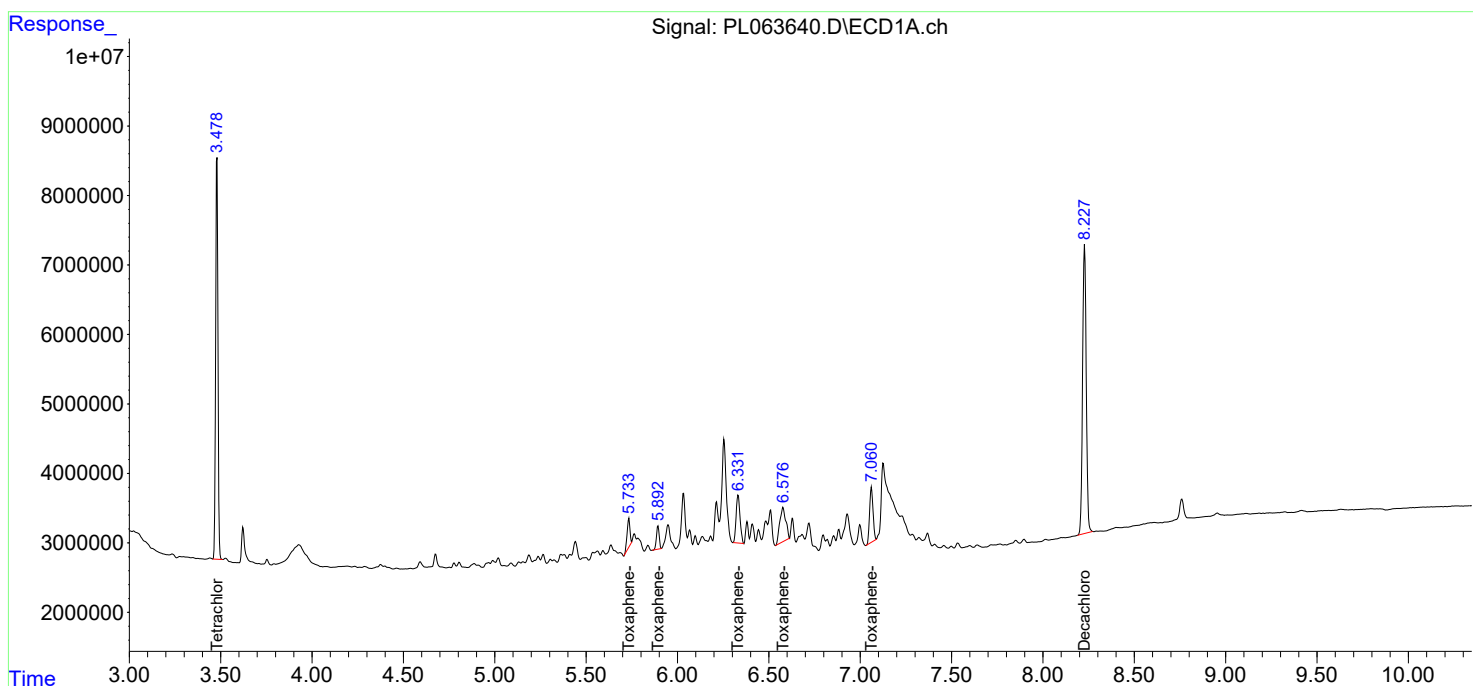
(f)=RT Delta > 1/2 Window (#)=Amounts differ by > 25% (m)=manual int.

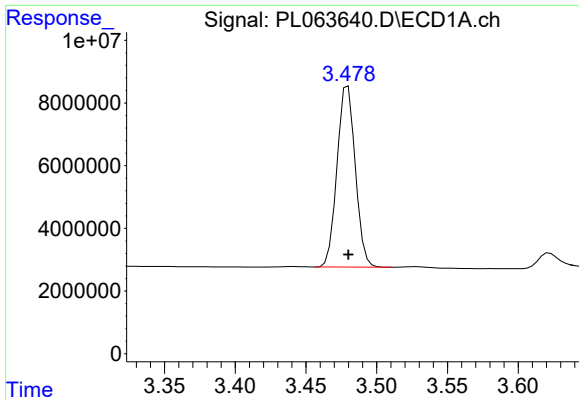
Data Path : Z:\pestpcbsrv\HPCHEM1\ECD_L\Data\PL121620\
 Data File : PL063640.D
 Signal(s) : Signal #1: ECD1A.ch Signal #2: ECD2B.ch
 Acq On : 17 Dec 2020 05:05
 Operator : DD\AJ
 Sample : PTOXIC250
 Misc :
 ALS Vial : 18 Sample Multiplier: 1

Instrument :
 ECD_L
 ClientSampled :

Integration File signal 1: autoint1.e
 Integration File signal 2: autoint2.e
 Quant Time: Dec 17 09:32:09 2020
 Quant Method : Z:\pestpcbsrv\HPCHEM1\ECD_L\methods\LTX121620.M
 Quant Title : GC Extractables
 QLast Update : Thu Dec 17 09:30:35 2020
 Response via : Initial Calibration
 Integrator: ChemStation

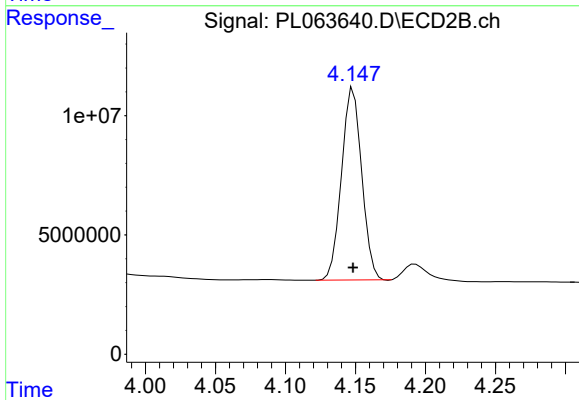
Volume Inj. : 2 µl
 Signal #1 Phase : Rtx-CLPesticide 1 Signal #2 Phase: Rtx-CLPesticide 1
 Signal #1 Info : 30M x 0.32mm x0.3 Signal #2 Info : 30M x 0.32mm x 0.25µm



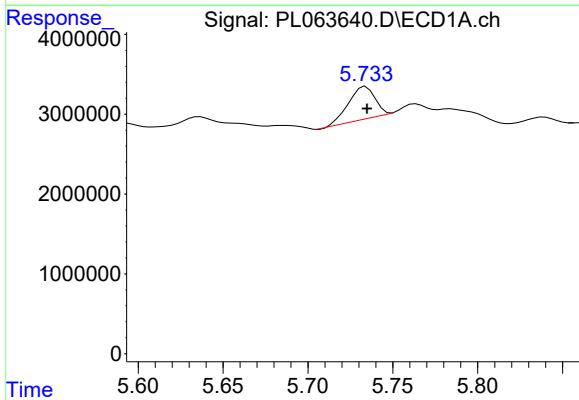


#1 Tetrachloro-m-xylene
 R.T.: 3.480 min
 Delta R.T.: 0.000 min
 Response: 51945368
 Conc: 24.83 ng/ml

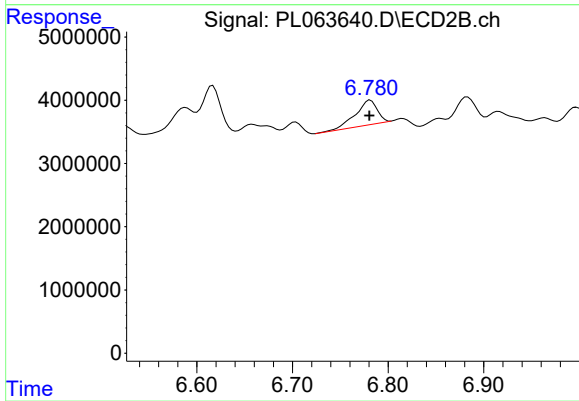
Instrument :
 ECD_L
 ClientSampled :



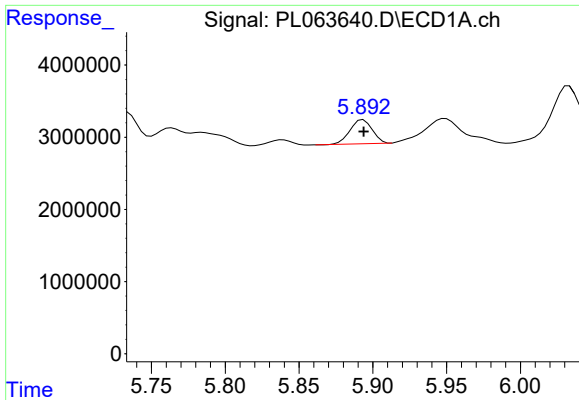
#1 Tetrachloro-m-xylene
 R.T.: 4.149 min
 Delta R.T.: 0.000 min
 Response: 81001139
 Conc: 24.32 ng/ml



#2 Toxaphene-1
 R.T.: 5.734 min
 Delta R.T.: 0.000 min
 Response: 4345175
 Conc: 271.60 ng/ml

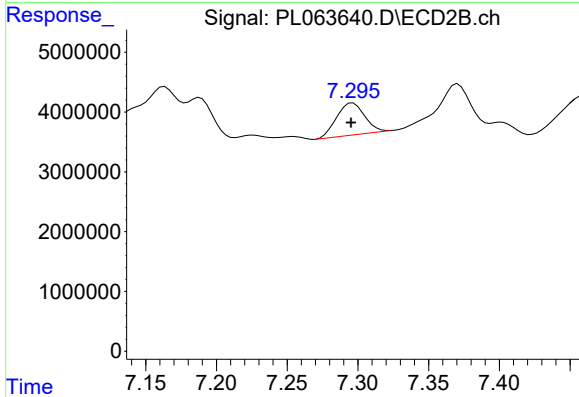


#2 Toxaphene-1
 R.T.: 6.782 min
 Delta R.T.: 0.000 min
 Response: 6143598
 Conc: 255.11 ng/ml

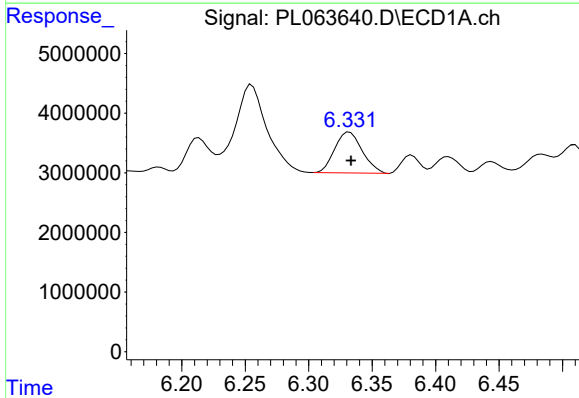


#3 Toxaphene-2
R.T.: 5.894 min
Delta R.T.: 0.000 min
Response: 3505147
Conc: 233.75 ng/ml

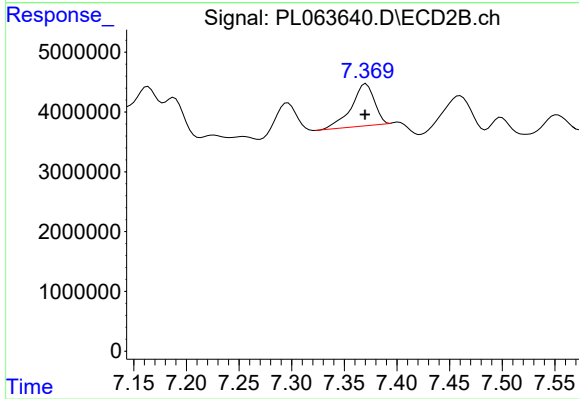
Instrument :
ECD_L
ClientSampleId :



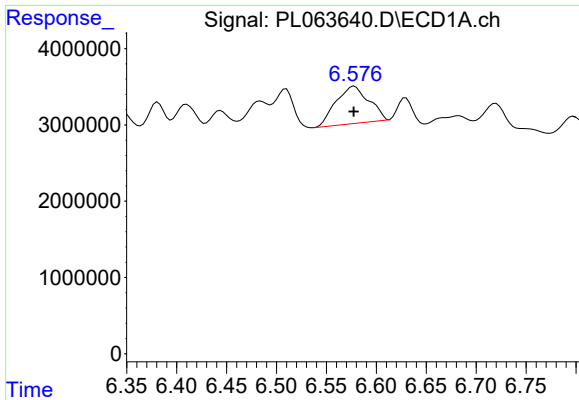
#3 Toxaphene-2
R.T.: 7.296 min
Delta R.T.: 0.001 min
Response: 7337983
Conc: 287.87 ng/ml



#4 Toxaphene-3
R.T.: 6.332 min
Delta R.T.: -0.001 min
Response: 10352973
Conc: 252.95 ng/ml

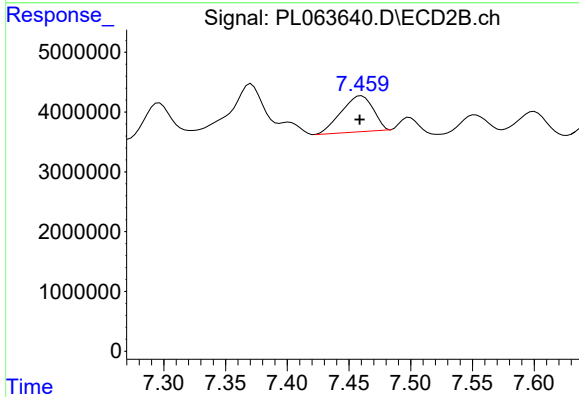


#4 Toxaphene-3
R.T.: 7.371 min
Delta R.T.: 0.001 min
Response: 10667296
Conc: 249.92 ng/ml

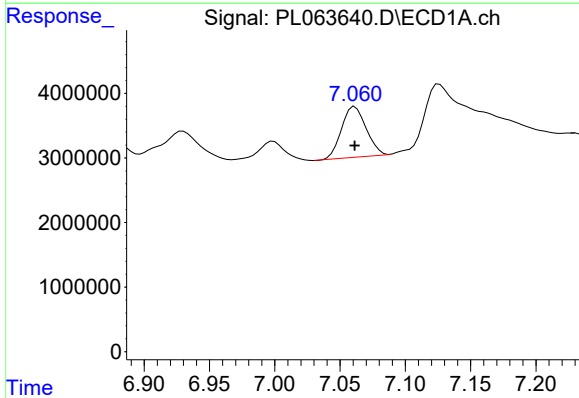


#5 Toxaphene-4
R.T.: 6.578 min
Delta R.T.: 0.000 min
Response: 11227621
Conc: 257.07 ng/ml

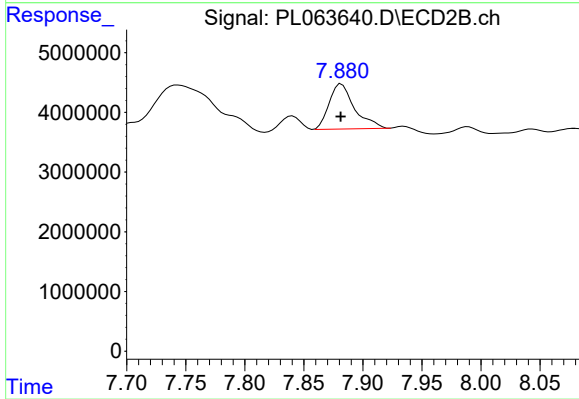
Instrument :
ECD_L
ClientSampleId :



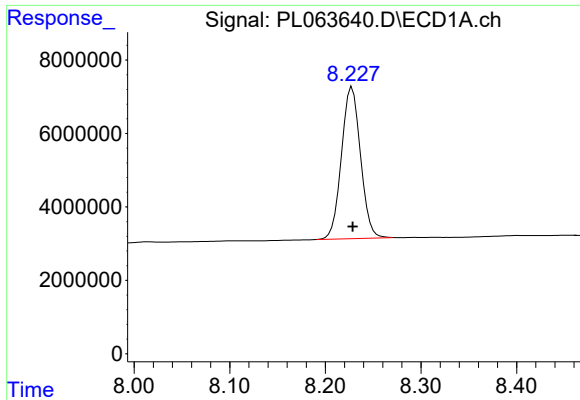
#5 Toxaphene-4
R.T.: 7.460 min
Delta R.T.: 0.002 min
Response: 10788857
Conc: 253.36 ng/ml



#6 Toxaphene-5
R.T.: 7.061 min
Delta R.T.: 0.000 min
Response: 10278506
Conc: 255.52 ng/ml



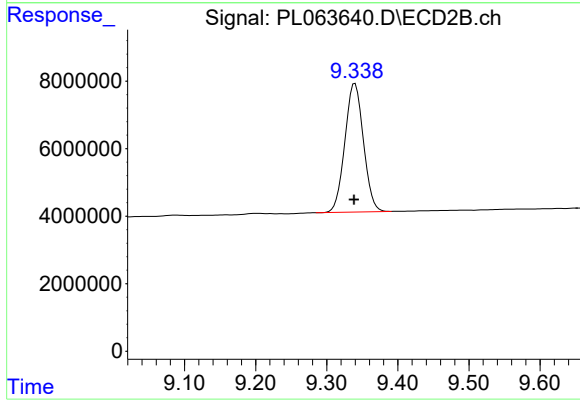
#6 Toxaphene-5
R.T.: 7.882 min
Delta R.T.: 0.000 min
Response: 11285112
Conc: 250.20 ng/ml



#7 Decachlorobiphenyl

R.T.: 8.228 min
Delta R.T.: 0.000 min
Response: 57342903
Conc: 26.60 ng/ml

Instrument :
ECD_L
ClientSampleId :



#7 Decachlorobiphenyl

R.T.: 9.340 min
Delta R.T.: 0.001 min
Response: 69009140
Conc: 25.72 ng/ml