

Data Path : Z:\pestpcbsrv\HPCHEM1\ECD_L\Data\PL121718\
 Data File : PL043195.D
 Signal(s) : Signal #1: ECD1A.ch Signal #2: ECD2B.ch
 Acq On : 17 Dec 2018 16:20
 Operator : AJ\SJ
 Sample : J6403-04
 Misc :
 ALS Vial : 24 Sample Multiplier: 1

Instrument :
 ECD_L
 ClientSampleId :
 TP-1-A

Integration File signal 1: autoint1.e
 Integration File signal 2: autoint2.e
 Quant Time: Dec 18 00:02:04 2018
 Quant Method : Z:\pestpcbsrv\HPCHEM1\ECD_L\methods\PL120618.M
 Quant Title : GC Extractables
 QLast Update : Fri Dec 07 00:20:08 2018
 Response via : Initial Calibration
 Integrator: ChemStation

Volume Inj. : 2 µl
 Signal #1 Phase : ZB-MR1 Signal #2 Phase: ZB-MR2
 Signal #1 Info : 30M x 0.32mm x0.5 Signal #2 Info : 30M x 0.32mm x0.25µm

Compound	RT#1	RT#2	Resp#1	Resp#2	ng/ml	ng/ml

System Monitoring Compounds						
1) SA Tetrachlo...	3.465	4.100	137.0E6	70802882	22.333	23.888
28) SA Decachlor...	8.202	9.231	126.4E6	57438004	19.364	22.020
Target Compounds						
2) A alpha-BHC	3.897	0.000	4069526	0	0.430	N.D. #
7) B delta-BHC	0.000	5.157	0	38672243	N.D.	8.999 #
8) B Heptachlo...	0.000	5.992	0	39337998	N.D.	10.374 #
9) A Endosulfan I	0.000	6.375	0	1228373	N.D.	0.362 #
11) B alpha-Chl...	0.000	6.302	0	279164	N.D.	0.078 #
15) B Endosulfa...	6.228f	0.000	8751573	0	1.316	N.D. #
23) Chlordane-1	4.362	5.157	-486974	38672243	N.D.	273.625
24) Chlordane-2	4.876	5.514	32653872	22211576	113.766	154.847 #
26) Chlordane-4	0.000	6.302	0	279164	N.D.	0.489 #
27) Chlordane-5	6.228	0.000	8751573	0	36.487	N.D. #

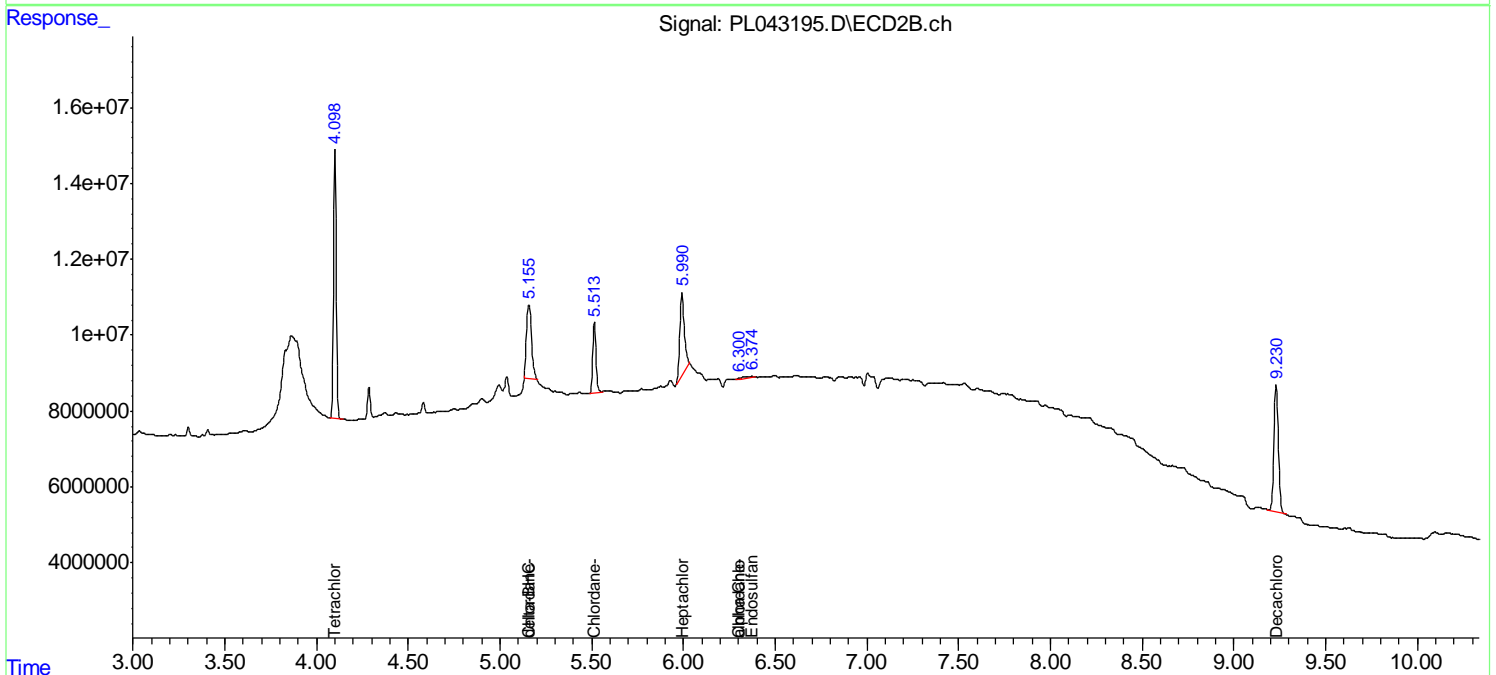
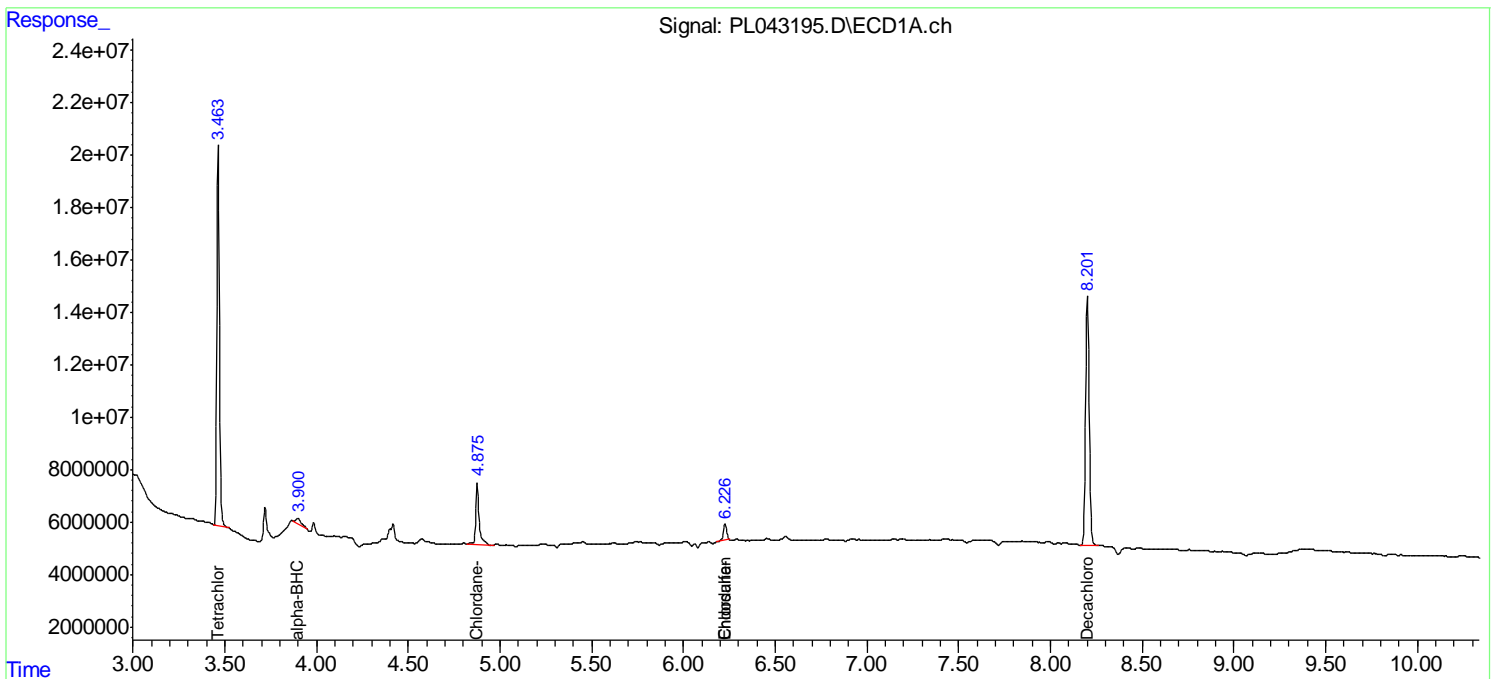
(f)=RT Delta > 1/2 Window (#)=Amounts differ by > 25% (m)=manual int.

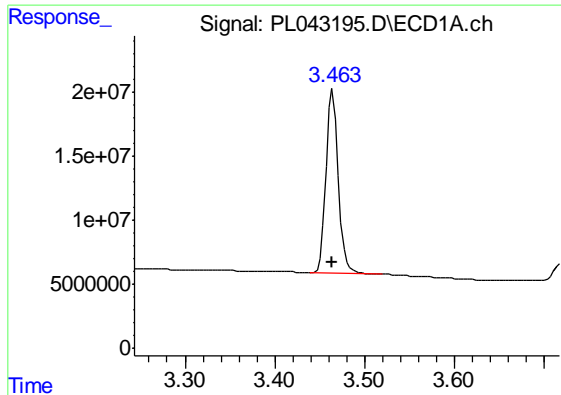
Data Path : Z:\pestpcbsrv\HPCHEM1\ECD_L\Data\PL121718\
 Data File : PL043195.D
 Signal(s) : Signal #1: ECD1A.ch Signal #2: ECD2B.ch
 Acq On : 17 Dec 2018 16:20
 Operator : AJ\SJ
 Sample : J6403-04
 Misc :
 ALS Vial : 24 Sample Multiplier: 1

Instrument :
 ECD_L
 ClientSampleId :
 TP-1-A

Integration File signal 1: autoint1.e
 Integration File signal 2: autoint2.e
 Quant Time: Dec 18 00:02:04 2018
 Quant Method : Z:\pestpcbsrv\HPCHEM1\ECD_L\methods\PL120618.M
 Quant Title : GC Extractables
 QLast Update : Fri Dec 07 00:20:08 2018
 Response via : Initial Calibration
 Integrator: ChemStation

Volume Inj. : 2 µl
 Signal #1 Phase : ZB-MR1 Signal #2 Phase: ZB-MR2
 Signal #1 Info : 30M x 0.32mm x0.5 Signal #2 Info : 30M x 0.32mm x0.25µm

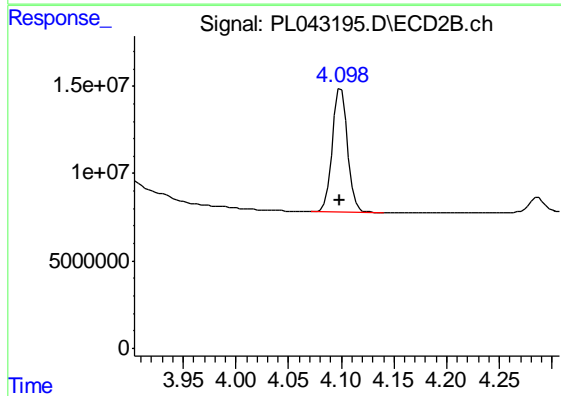




#1 Tetrachloro-m-xylene

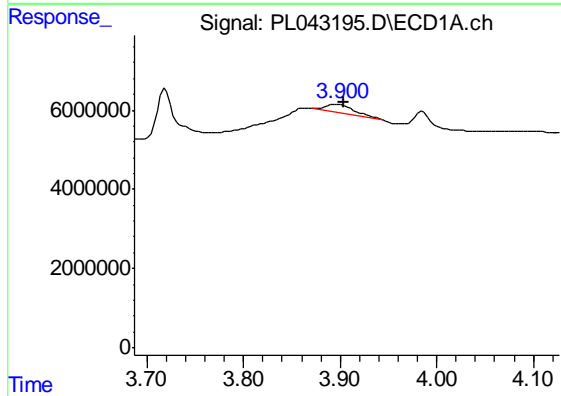
R.T.: 3.465 min
 Delta R.T.: 0.000 min
 Response: 136966892
 Conc: 22.33 ng/ml

Instrument :
 ECD_L
 ClientSampleId :
 TP-1-A



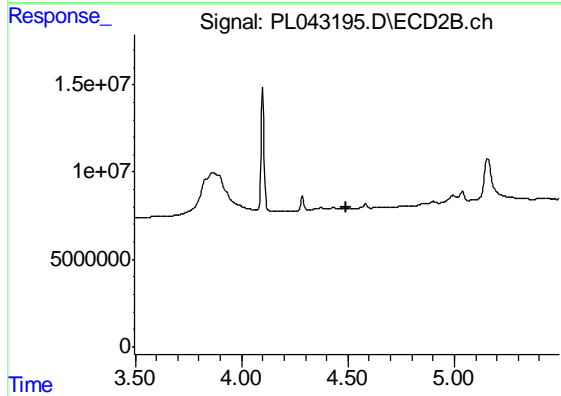
#1 Tetrachloro-m-xylene

R.T.: 4.100 min
 Delta R.T.: 0.000 min
 Response: 70802882
 Conc: 23.89 ng/ml



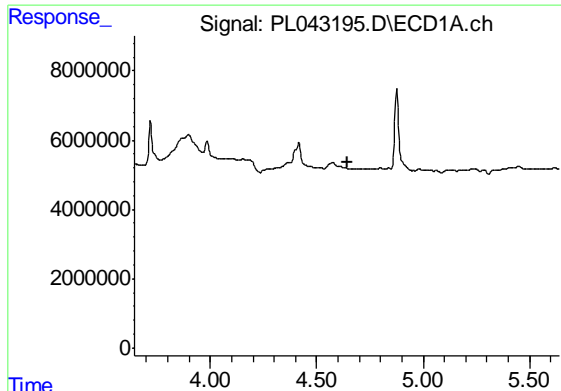
#2 alpha-BHC

R.T.: 3.897 min
 Delta R.T.: -0.007 min
 Response: 4069526
 Conc: 0.43 ng/ml



#2 alpha-BHC

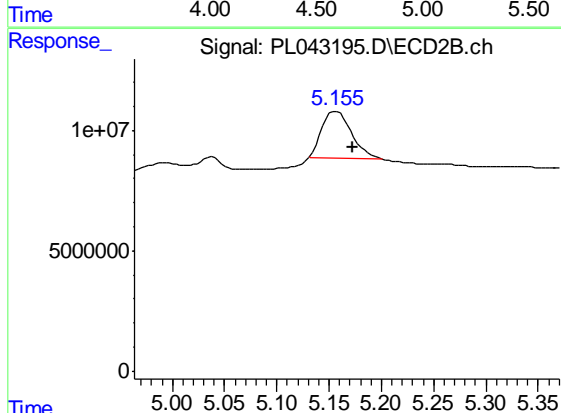
R.T.: 0.000 min
 Exp R.T. : 4.494 min
 Response: 0
 Conc: N.D.



#7 delta-BHC

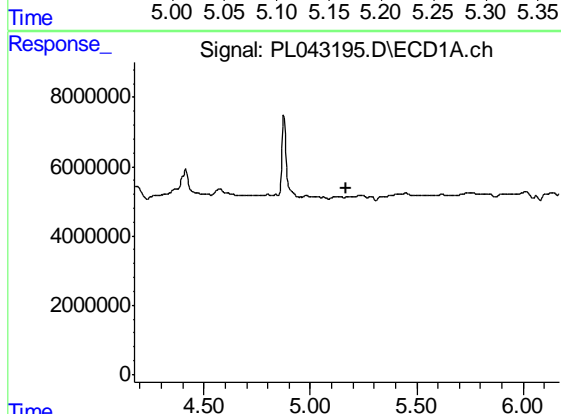
R.T.: 0.000 min
 Exp R.T. : 4.643 min
 Response: 0
 Conc: N.D.

Instrument :
 ECD_L
 ClientSampleId :
 TP-1-A



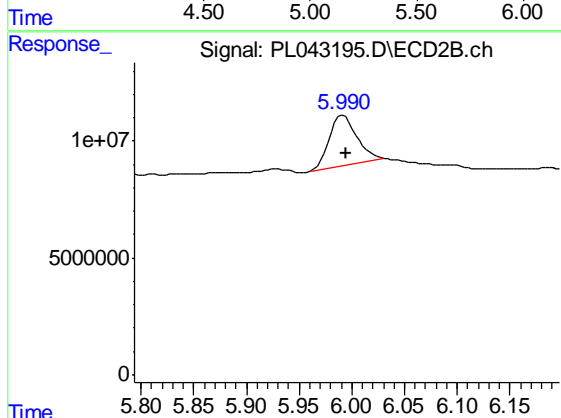
#7 delta-BHC

R.T.: 5.157 min
 Delta R.T.: -0.016 min
 Response: 38672243
 Conc: 9.00 ng/ml



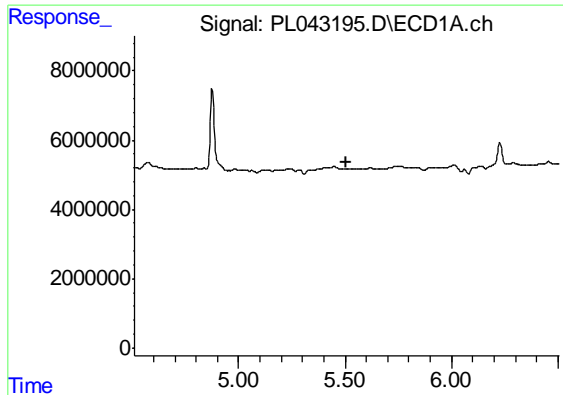
#8 Heptachlor epoxide

R.T.: 0.000 min
 Exp R.T. : 5.171 min
 Response: 0
 Conc: N.D.



#8 Heptachlor epoxide

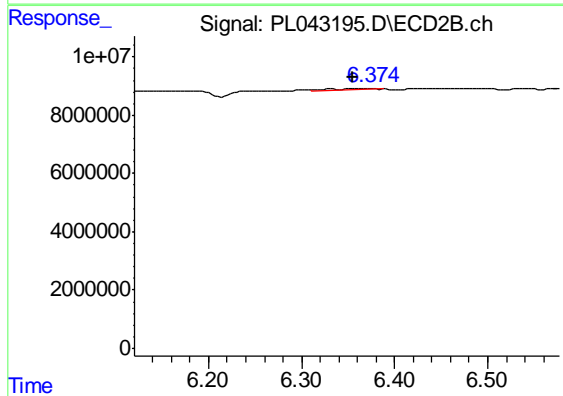
R.T.: 5.992 min
 Delta R.T.: -0.003 min
 Response: 39337998
 Conc: 10.37 ng/ml



#9 Endosulfan I

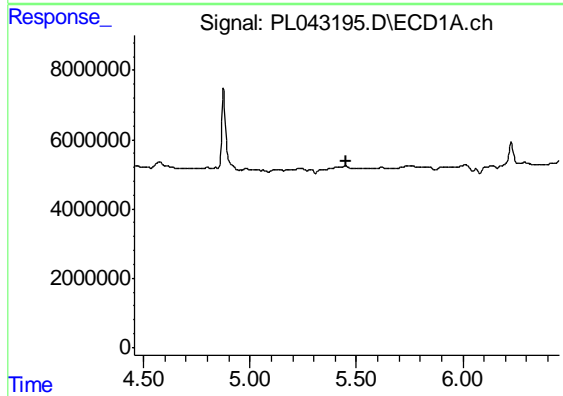
R.T.: 0.000 min
 Exp R.T. : 5.508 min
 Response: 0
 Conc: N.D.

Instrument :
 ECD_L
 ClientSampled :
 TP-1-A



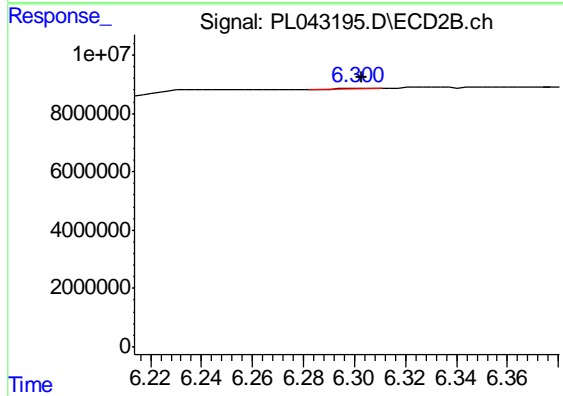
#9 Endosulfan I

R.T.: 6.375 min
 Delta R.T.: 0.021 min
 Response: 1228373
 Conc: 0.36 ng/ml



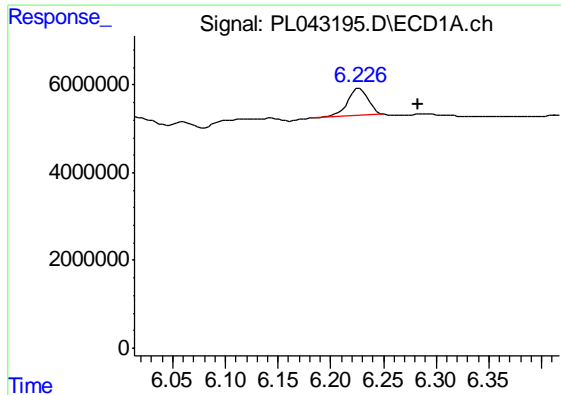
#11 alpha-Chlordane

R.T.: 0.000 min
 Exp R.T. : 5.454 min
 Response: 0
 Conc: N.D.



#11 alpha-Chlordane

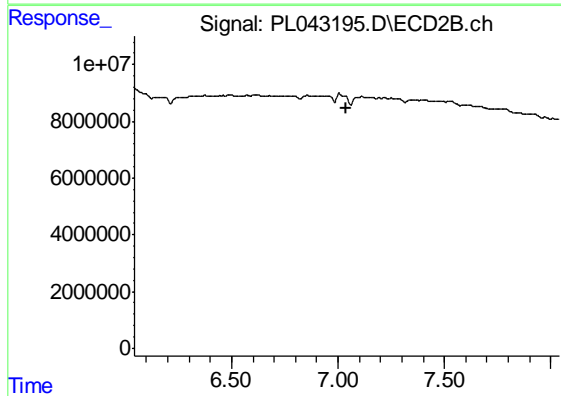
R.T.: 6.302 min
 Delta R.T.: 0.000 min
 Response: 279164
 Conc: 0.08 ng/ml



#15 Endosulfan II

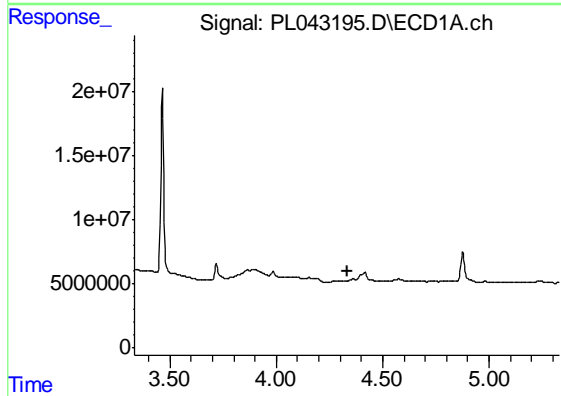
R.T.: 6.228 min
 Delta R.T.: -0.055 min
 Response: 8751573
 Conc: 1.32 ng/ml

Instrument :
 ECD_L
 ClientSampled :
 TP-1-A



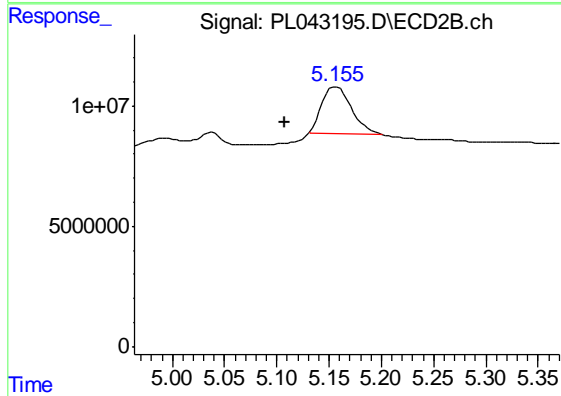
#15 Endosulfan II

R.T.: 0.000 min
 Exp R.T. : 7.041 min
 Response: 0
 Conc: N.D.



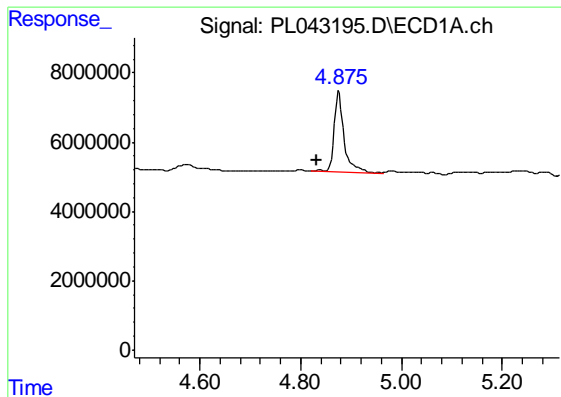
#23 Chlordane-1

R.T.: 4.362 min
 Delta R.T.: 0.030 min
 Response: -486974
 Conc: N.D.



#23 Chlordane-1

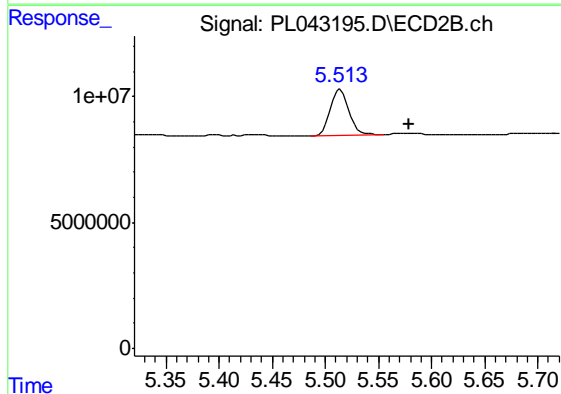
R.T.: 5.157 min
 Delta R.T.: 0.049 min
 Response: 38672243
 Conc: 273.63 ng/ml



#24 Chlordane-2

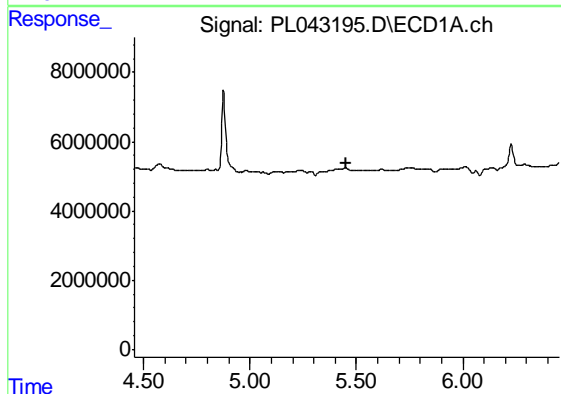
R.T.: 4.876 min
 Delta R.T.: 0.045 min
 Response: 32653872
 Conc: 113.77 ng/ml

Instrument :
 ECD_L
 ClientSampleId :
 TP-1-A



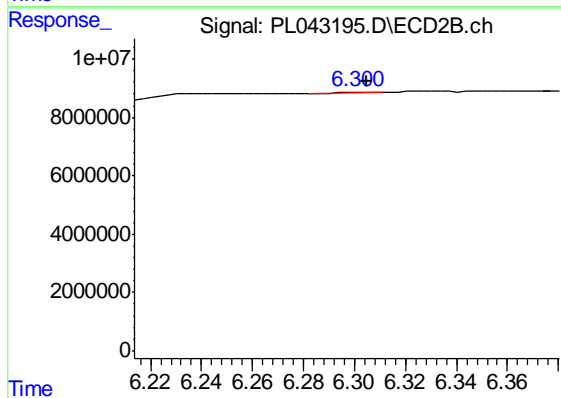
#24 Chlordane-2

R.T.: 5.514 min
 Delta R.T.: -0.065 min
 Response: 22211576
 Conc: 154.85 ng/ml



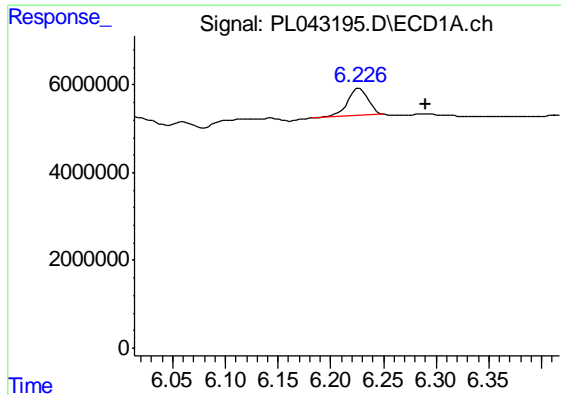
#26 Chlordane-4

R.T.: 0.000 min
 Exp R.T. : 5.455 min
 Response: 0
 Conc: N.D.



#26 Chlordane-4

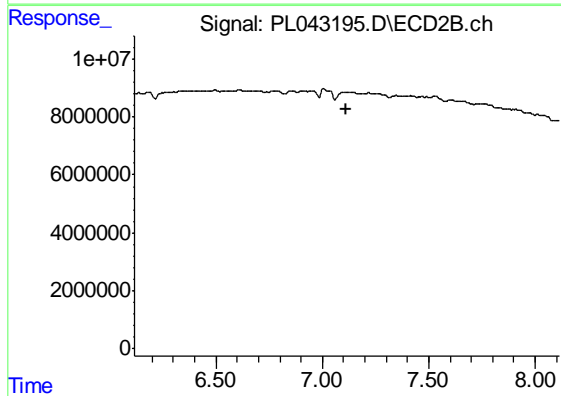
R.T.: 6.302 min
 Delta R.T.: -0.003 min
 Response: 279164
 Conc: 0.49 ng/ml



#27 Chlordane-5

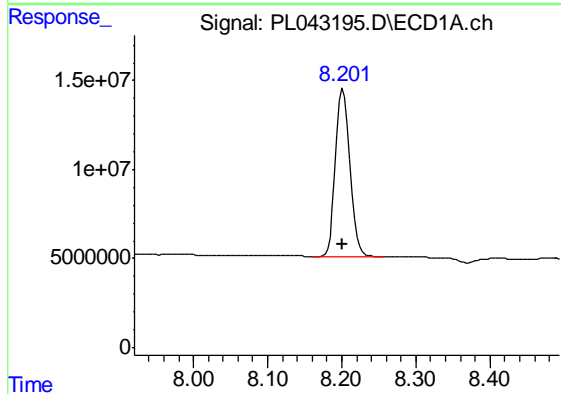
R.T.: 6.228 min
 Delta R.T.: -0.062 min
 Response: 8751573
 Conc: 36.49 ng/ml

Instrument :
 ECD_L
 ClientSampled :
 TP-1-A



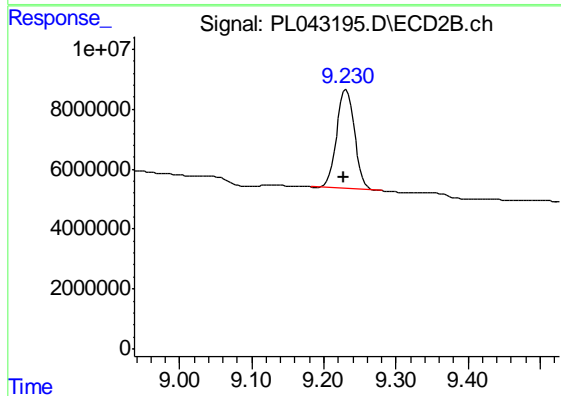
#27 Chlordane-5

R.T.: 0.000 min
 Exp R.T. : 7.115 min
 Response: 0
 Conc: N.D.



#28 Decachlorobiphenyl

R.T.: 8.202 min
 Delta R.T.: 0.000 min
 Response: 126448886
 Conc: 19.36 ng/ml



#28 Decachlorobiphenyl

R.T.: 9.231 min
 Delta R.T.: 0.004 min
 Response: 57438004
 Conc: 22.02 ng/ml