

Data Path : Z:\pestpcbsrv\HPCHEM1\ECD\_L\Data\PL121718\  
 Data File : PL043189.D  
 Signal(s) : Signal #1: ECD1A.ch Signal #2: ECD2B.ch  
 Acq On : 17 Dec 2018 14:30  
 Operator : AJ\SJ  
 Sample : I.BLK  
 Misc :  
 ALS Vial : 2 Sample Multiplier: 1

Instrument :  
 ECD\_L  
 ClientSampleID :  
 I.BLK

Integration File signal 1: autoint1.e  
 Integration File signal 2: autoint2.e  
 Quant Time: Dec 17 23:59:58 2018  
 Quant Method : Z:\pestpcbsrv\HPCHEM1\ECD\_L\methods\PL120618.M  
 Quant Title : GC Extractables  
 QLast Update : Fri Dec 07 00:20:08 2018  
 Response via : Initial Calibration  
 Integrator: ChemStation

Volume Inj. : 2 µl  
 Signal #1 Phase : ZB-MR1 Signal #2 Phase: ZB-MR2  
 Signal #1 Info : 30M x 0.32mm x0.5 Signal #2 Info : 30M x 0.32mm x0.25µm

Compound	RT#1	RT#2	Resp#1	Resp#2	ng/ml	ng/ml
-----						
System Monitoring Compounds						
1) SA Tetrachlo...	3.464	4.100	145.0E6	72102498	23.650	24.327
28) SA Decachlor...	8.202	9.230	153.3E6	63204131	23.472	24.230

Target Compounds

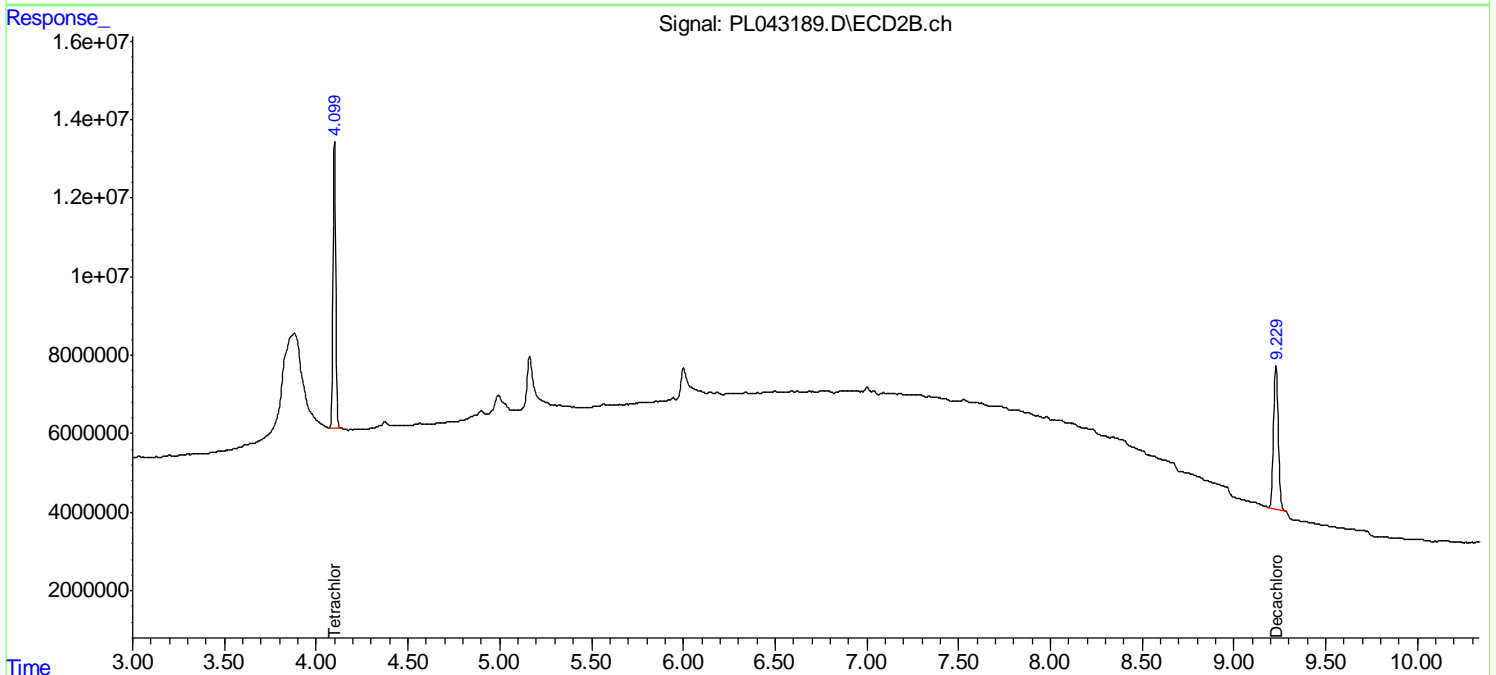
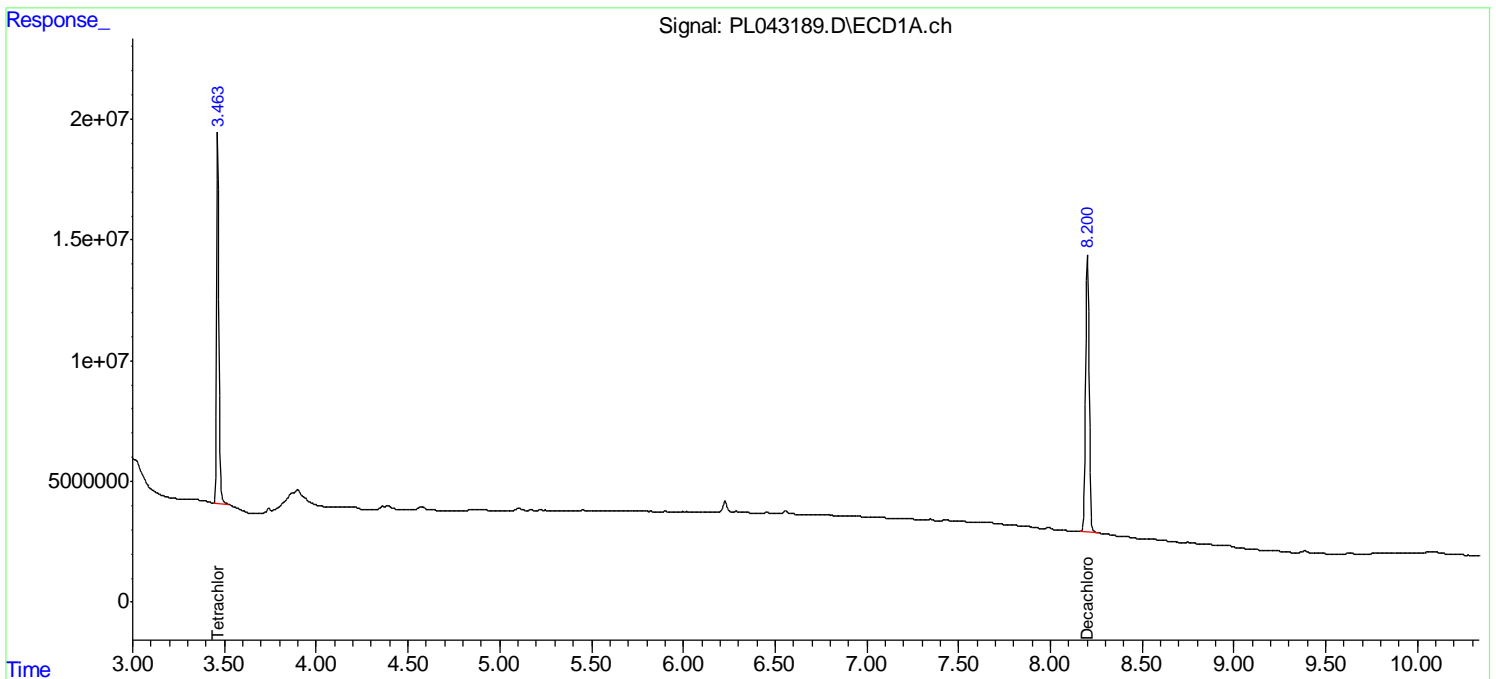
(f)=RT Delta > 1/2 Window (#)=Amounts differ by > 25% (m)=manual int.

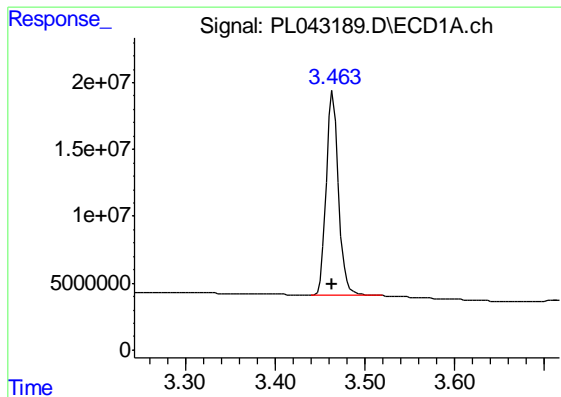
Data Path : Z:\pestpcbsrv\HPCHEM1\ECD\_L\Data\PL121718\  
 Data File : PL043189.D  
 Signal(s) : Signal #1: ECD1A.ch Signal #2: ECD2B.ch  
 Acq On : 17 Dec 2018 14:30  
 Operator : AJ\SJ  
 Sample : I.BLK  
 Misc :  
 ALS Vial : 2 Sample Multiplier: 1

Instrument :  
 ECD\_L  
 ClientSampleId :  
 I.BLK

Integration File signal 1: autoint1.e  
 Integration File signal 2: autoint2.e  
 Quant Time: Dec 17 23:59:58 2018  
 Quant Method : Z:\pestpcbsrv\HPCHEM1\ECD\_L\methods\PL120618.M  
 Quant Title : GC Extractables  
 QLast Update : Fri Dec 07 00:20:08 2018  
 Response via : Initial Calibration  
 Integrator: ChemStation

Volume Inj. : 2 µl  
 Signal #1 Phase : ZB-MR1 Signal #2 Phase: ZB-MR2  
 Signal #1 Info : 30M x 0.32mm x0.5 Signal #2 Info : 30M x 0.32mm x0.25µm

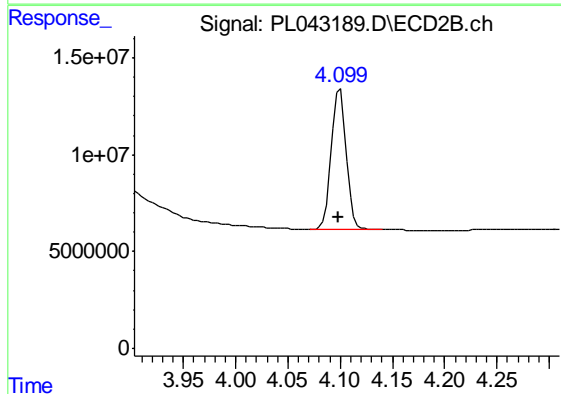




#1 Tetrachloro-m-xylene

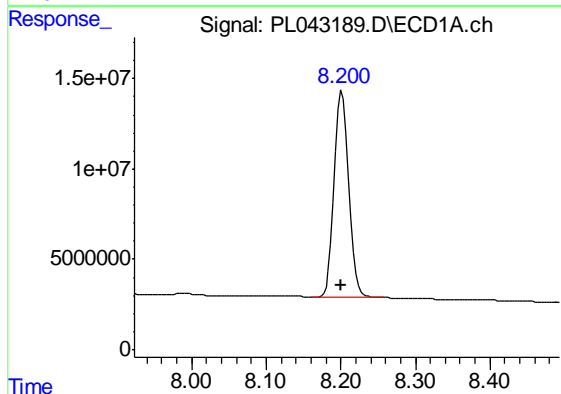
R.T.: 3.464 min  
 Delta R.T.: 0.000 min  
 Response: 145041478  
 Conc: 23.65 ng/ml

Instrument :  
 ECD\_L  
 ClientSampleId :  
 I.BLK



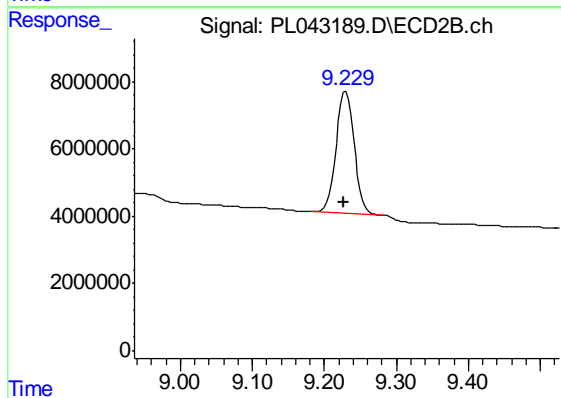
#1 Tetrachloro-m-xylene

R.T.: 4.100 min  
 Delta R.T.: 0.000 min  
 Response: 72102498  
 Conc: 24.33 ng/ml



#28 Decachlorobiphenyl

R.T.: 8.202 min  
 Delta R.T.: 0.000 min  
 Response: 153272869  
 Conc: 23.47 ng/ml



#28 Decachlorobiphenyl

R.T.: 9.230 min  
 Delta R.T.: 0.003 min  
 Response: 63204131  
 Conc: 24.23 ng/ml