

Data Path : Z:\pestpcbsrv\HPCHEM1\ECD\_L\Data\PL121718\  
 Data File : PL043206.D  
 Signal(s) : Signal #1: ECD1A.ch Signal #2: ECD2B.ch  
 Acq On : 17 Dec 2018 18:55  
 Operator : AJ\SJ  
 Sample : J6403-40  
 Misc :  
 ALS Vial : 35 Sample Multiplier: 1

Instrument :  
 ECD\_L  
 ClientSampleID :  
 TP-5-B

Integration File signal 1: autoint1.e  
 Integration File signal 2: autoint2.e  
 Quant Time: Dec 18 00:05:24 2018  
 Quant Method : Z:\pestpcbsrv\HPCHEM1\ECD\_L\methods\PL120618.M  
 Quant Title : GC Extractables  
 QLast Update : Fri Dec 07 00:20:08 2018  
 Response via : Initial Calibration  
 Integrator: ChemStation

Volume Inj. : 2 µl  
 Signal #1 Phase : ZB-MR1 Signal #2 Phase: ZB-MR2  
 Signal #1 Info : 30M x 0.32mm x0.5 Signal #2 Info : 30M x 0.32mm x0.25µm

Compound	RT#1	RT#2	Resp#1	Resp#2	ng/ml	ng/ml
----------	------	------	--------	--------	-------	-------

-----  
 System Monitoring Compounds

1) SA Tetrachlo...	3.465	4.100	127.0E6	64498165	20.709	21.761
28) SA Decachlor...	8.202	9.232	131.8E6	53474912	20.191	20.500

Target Compounds  
 -----

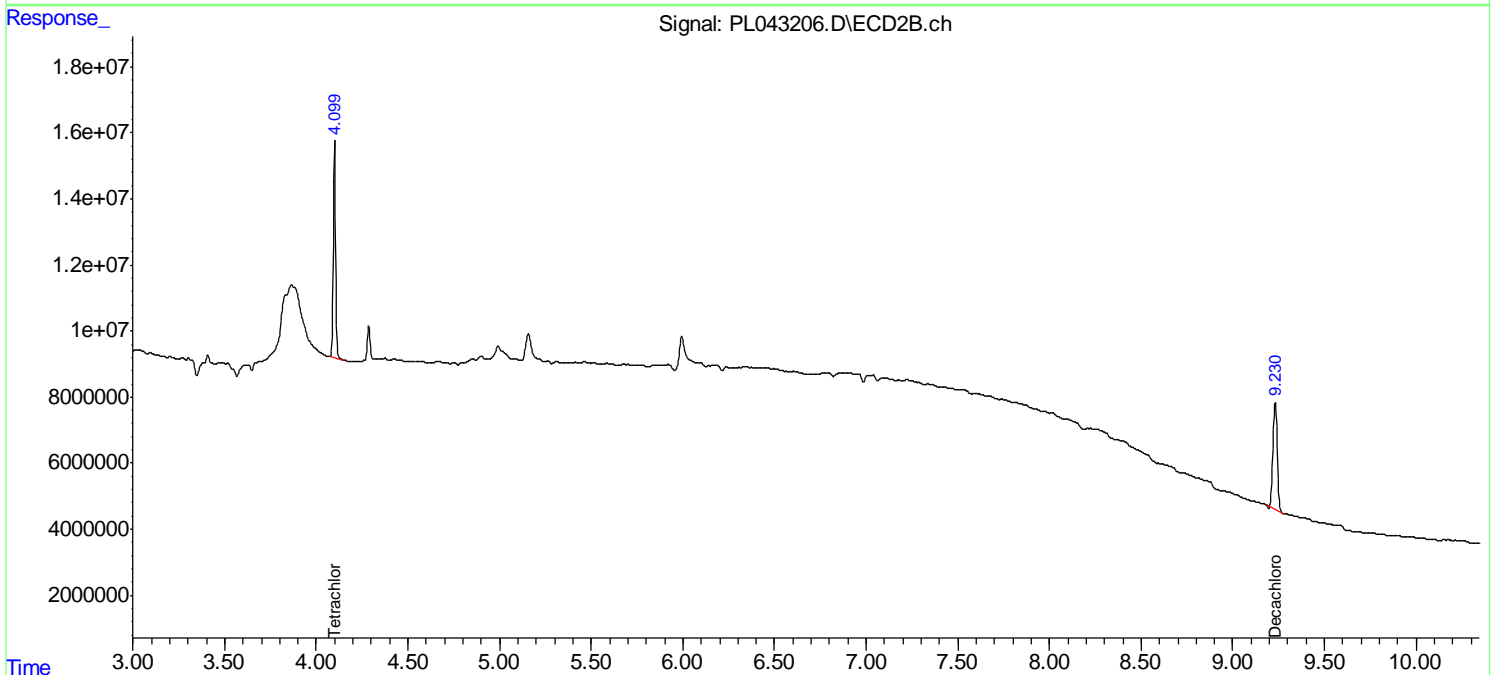
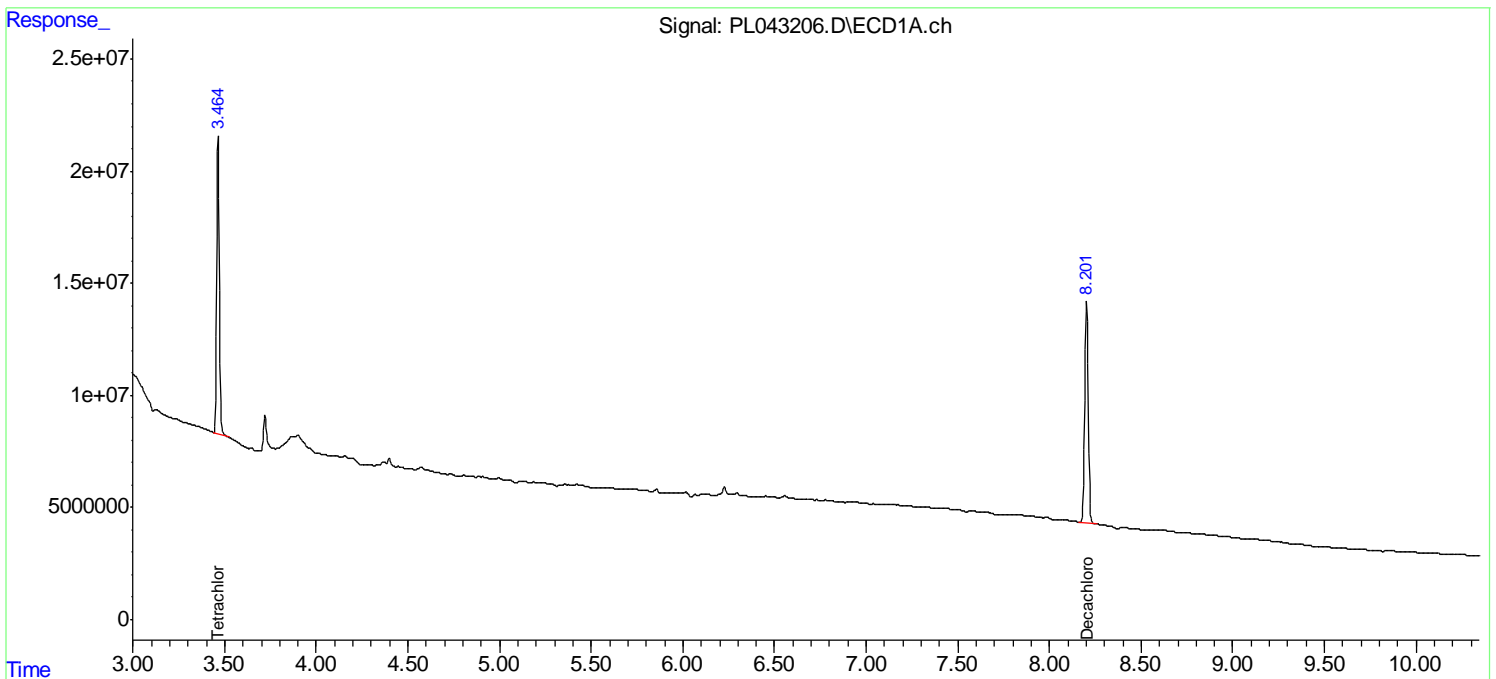
(f)=RT Delta > 1/2 Window (#)=Amounts differ by > 25% (m)=manual int.

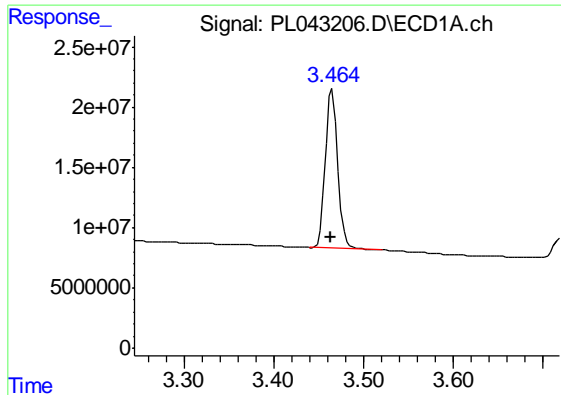
Data Path : Z:\pestpcbsrv\HPCHEM1\ECD\_L\Data\PL121718\  
 Data File : PL043206.D  
 Signal(s) : Signal #1: ECD1A.ch Signal #2: ECD2B.ch  
 Acq On : 17 Dec 2018 18:55  
 Operator : AJ\SJ  
 Sample : J6403-40  
 Misc :  
 ALS Vial : 35 Sample Multiplier: 1

Instrument :  
 ECD\_L  
 ClientSampled :  
 TP-5-B

Integration File signal 1: autoint1.e  
 Integration File signal 2: autoint2.e  
 Quant Time: Dec 18 00:05:24 2018  
 Quant Method : Z:\pestpcbsrv\HPCHEM1\ECD\_L\methods\PL120618.M  
 Quant Title : GC Extractables  
 QLast Update : Fri Dec 07 00:20:08 2018  
 Response via : Initial Calibration  
 Integrator: ChemStation

Volume Inj. : 2 µl  
 Signal #1 Phase : ZB-MR1 Signal #2 Phase: ZB-MR2  
 Signal #1 Info : 30M x 0.32mm x0.5 Signal #2 Info : 30M x 0.32mm x0.25µm

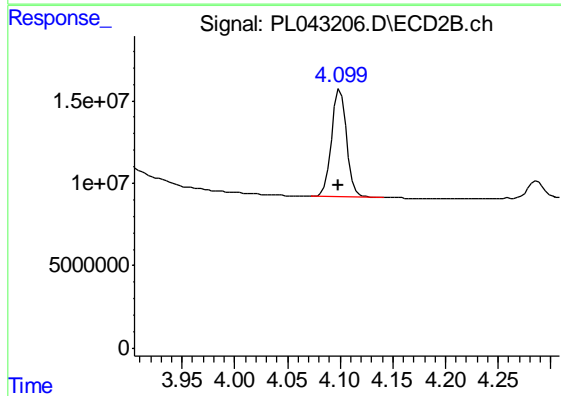




#1 Tetrachloro-m-xylene

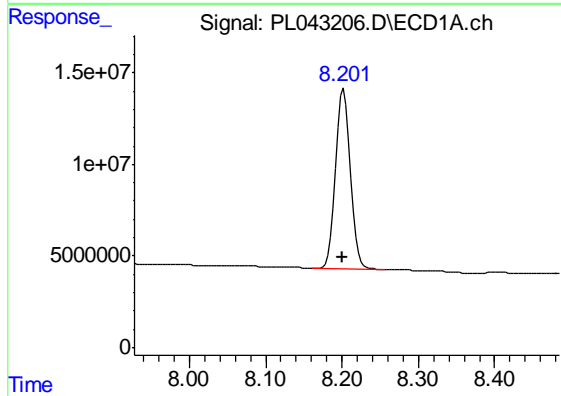
R.T.: 3.465 min  
 Delta R.T.: 0.001 min  
 Response: 127007072  
 Conc: 20.71 ng/ml

Instrument :  
 ECD\_L  
 ClientSampled :  
 TP-5-B



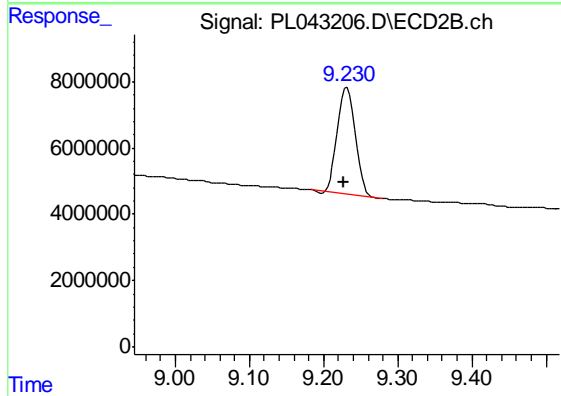
#1 Tetrachloro-m-xylene

R.T.: 4.100 min  
 Delta R.T.: 0.001 min  
 Response: 64498165  
 Conc: 21.76 ng/ml



#28 Decachlorobiphenyl

R.T.: 8.202 min  
 Delta R.T.: 0.001 min  
 Response: 131849217  
 Conc: 20.19 ng/ml



#28 Decachlorobiphenyl

R.T.: 9.232 min  
 Delta R.T.: 0.005 min  
 Response: 53474912  
 Conc: 20.50 ng/ml