

Data Path : Z:\pestpcbsrv\HPCHEM1\ECD_L\Data\PL121819\
 Data File : PL055081.D
 Signal(s) : Signal #1: ECD1A.ch Signal #2: ECD2B.ch
 Acq On : 18 Dec 2019 17:32
 Operator : SG\AJ
 Sample : PEM
 Misc :
 ALS Vial : 3 Sample Multiplier: 1

Instrument :
 ECD_L
 ClientSampleId :

Integration File signal 1: autoint1.e
 Integration File signal 2: autoint2.e
 Quant Time: Dec 19 02:13:01 2019
 Quant Method : Z:\pestpcbsrv\HPCHEM1\ECD_L\methods\PL112619.M
 Quant Title : GC Extractables
 QLast Update : Wed Dec 18 14:58:42 2019
 Response via : Initial Calibration
 Integrator: ChemStation

Volume Inj. : 1 µl
 Signal #1 Phase : ZB-MR1 Signal #2 Phase: ZB-MR1
 Signal #1 Info : 30M x 0.32mm x0.2 Signal #2 Info : 30M x 0.32mm x0.5µm

	Compound	RT#1	RT#2	Resp#1	Resp#2	ng/ml	ng/ml

System Monitoring Compounds							
1)	SA Tetrachlo...	3.537	4.050	220.0E6	58184200	18.910	22.801
28)	SA Decachlor...	8.316	9.150	168.4E6	46696379	17.583	19.478
Target Compounds							
2)	A alpha-BHC	3.979	4.441	173.0E6	40091257	9.113	11.316
3)	MA gamma-BHC...	4.266	4.727	152.0E6	36963825	8.915	11.337 #
6)	B beta-BHC	4.516	4.898	97232281	15998864	13.110	11.361
8)	B Heptachlo...	5.247f	0.000	1886459	0	0.125	N.D. #
12)	B 4,4'-DDE	5.720	0.000	5370140	0	0.404	N.D. #
14)	MA Endrin	6.113	6.763	538.4E6	101.5E6	42.282	45.814
16)	A 4,4'-DDD	6.235	6.885	27459027	7839598	2.811	4.083 #
17)	MA 4,4'-DDT	6.477	7.185	946.8E6	197.4E6	90.378	99.649
18)	B Endrin al...	6.552	7.098	11236334	2331876	1.135	1.190
20)	A Methoxychlor	7.022	7.645	1064.9E6	246.9E6	212.480	216.474
21)	B Endrin ke...	7.260	7.795	26551997	6888663	2.443	3.060 #

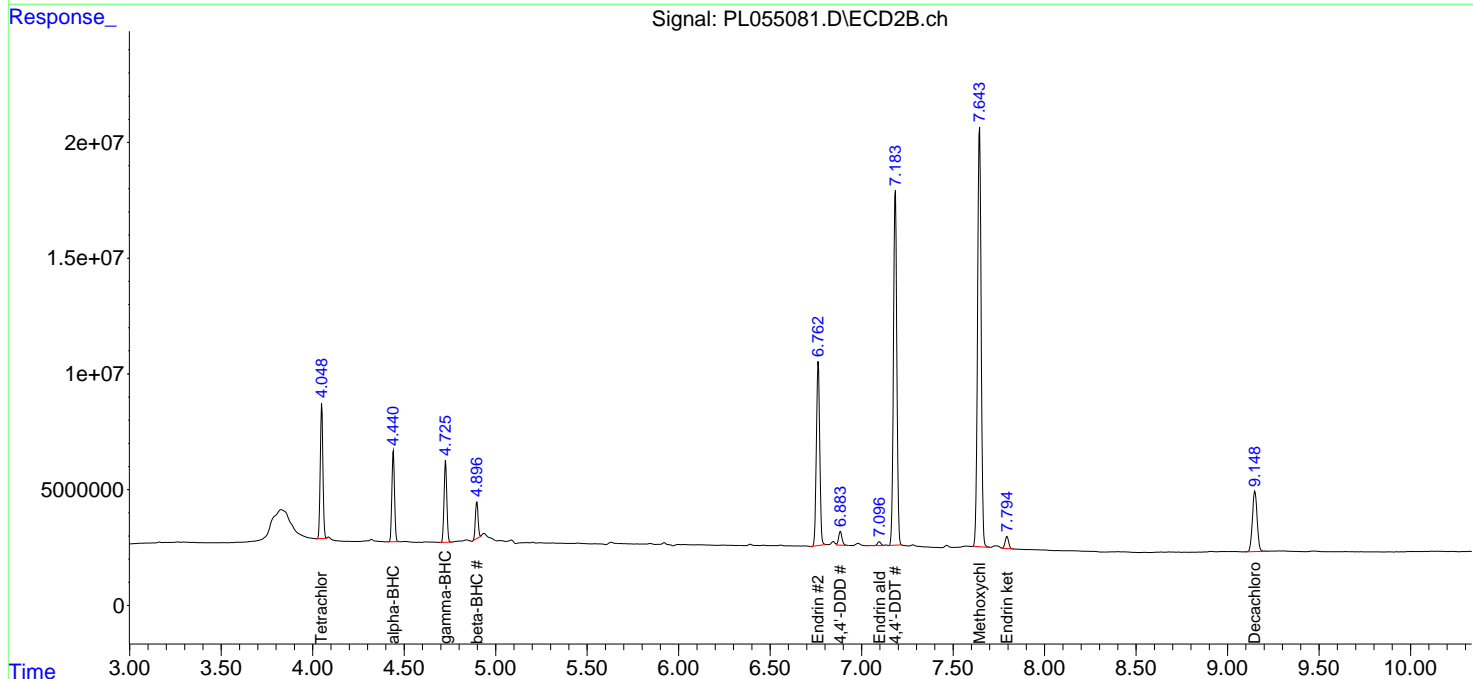
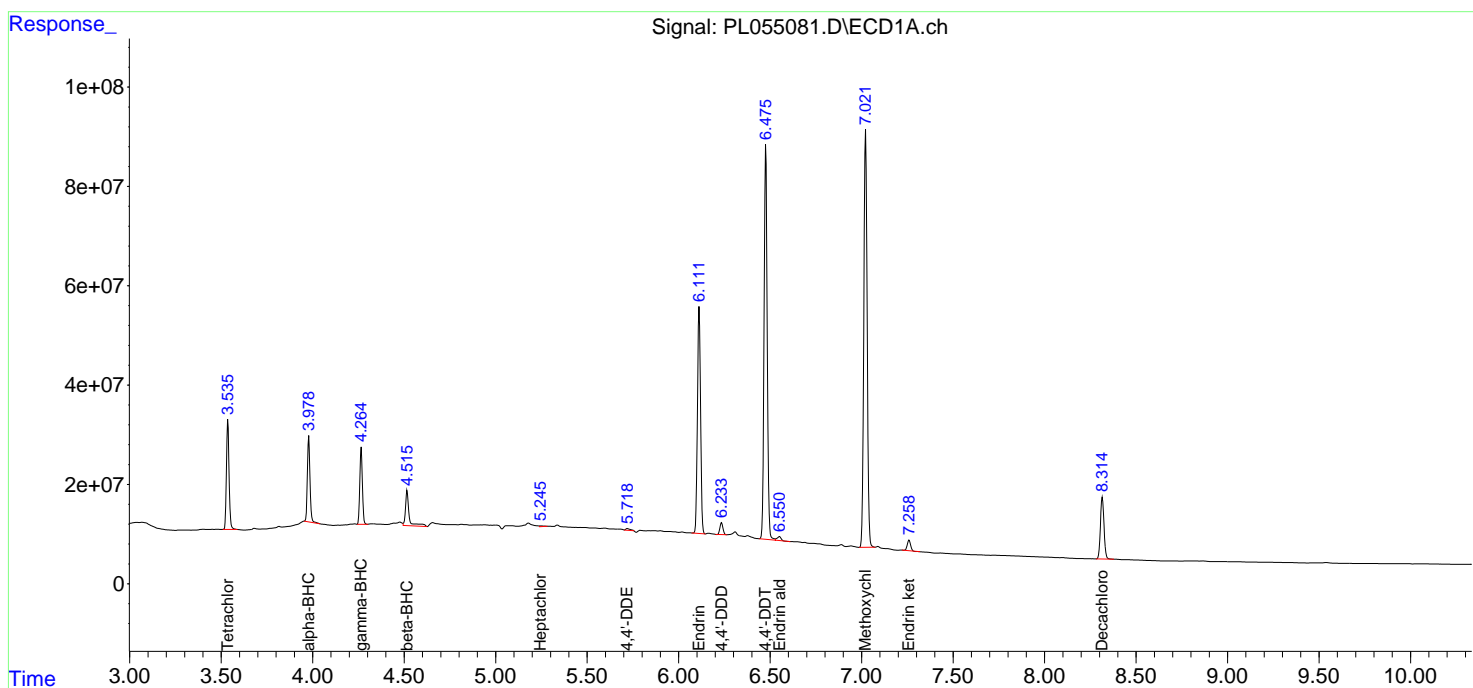
(f)=RT Delta > 1/2 Window (#)=Amounts differ by > 25% (m)=manual int.

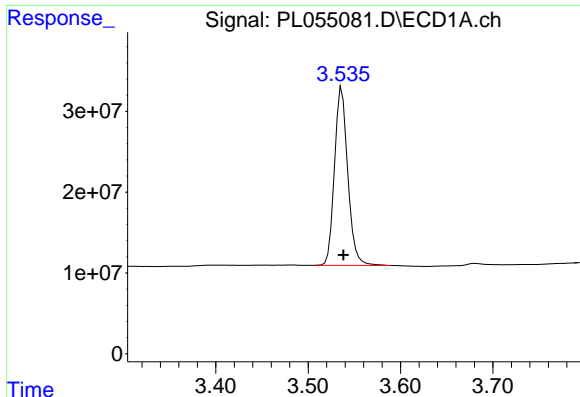
Data Path : Z:\pestpcbsrv\HPCHEM1\ECD_L\Data\PL121819\
 Data File : PL055081.D
 Signal(s) : Signal #1: ECD1A.ch Signal #2: ECD2B.ch
 Acq On : 18 Dec 2019 17:32
 Operator : SG\AJ
 Sample : PEM
 Misc :
 ALS Vial : 3 Sample Multiplier: 1

Instrument :
 ECD_L
 ClientSampled :

Integration File signal 1: autoint1.e
 Integration File signal 2: autoint2.e
 Quant Time: Dec 19 02:13:01 2019
 Quant Method : Z:\pestpcbsrv\HPCHEM1\ECD_L\methods\PL112619.M
 Quant Title : GC Extractables
 QLast Update : Wed Dec 18 14:58:42 2019
 Response via : Initial Calibration
 Integrator: ChemStation

Volume Inj. : 1 µl
 Signal #1 Phase : ZB-MR2 Signal #2 Phase: ZB-MR1
 Signal #1 Info : 30M x 0.32mm x0.2 Signal #2 Info : 30M x 0.32mm x0.5µm

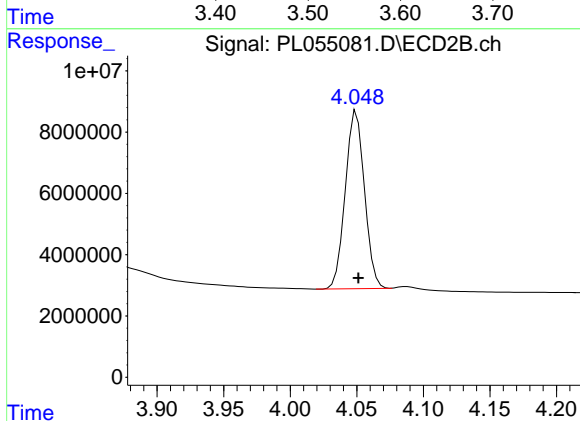




#1 Tetrachloro-m-xylene

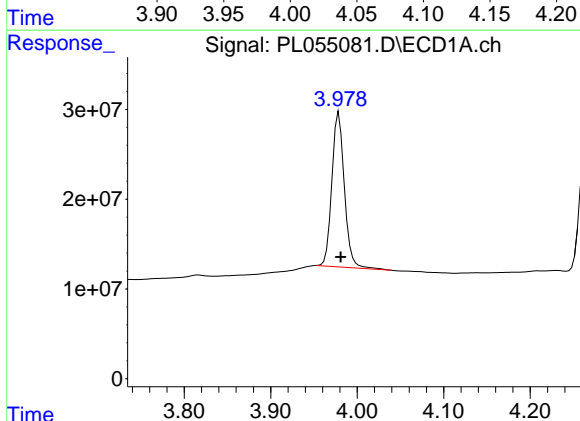
R.T.: 3.537 min
 Delta R.T.: -0.001 min
 Response: 21997810
 Conc: 18.91 ng/ml

Instrument :
 ECD_L
 ClientSampled :



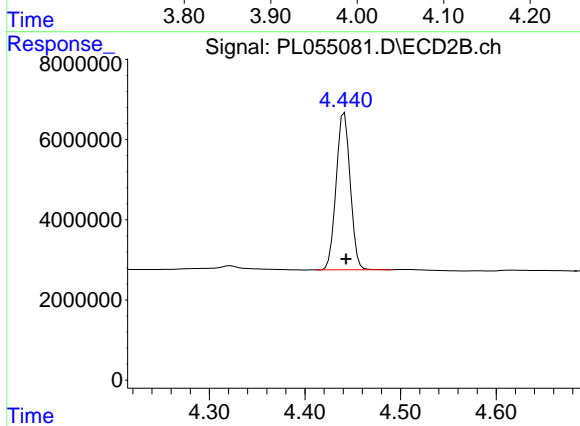
#1 Tetrachloro-m-xylene

R.T.: 4.050 min
 Delta R.T.: -0.001 min
 Response: 58184200
 Conc: 22.80 ng/ml



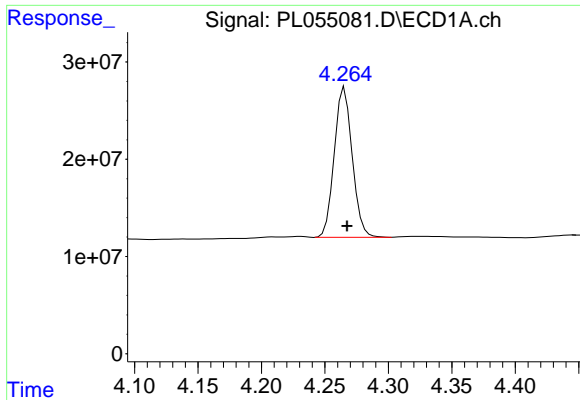
#2 alpha-BHC

R.T.: 3.979 min
 Delta R.T.: -0.002 min
 Response: 173010408
 Conc: 9.11 ng/ml



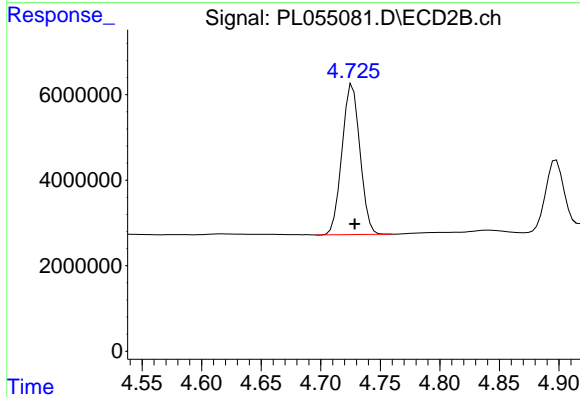
#2 alpha-BHC

R.T.: 4.441 min
 Delta R.T.: -0.002 min
 Response: 40091257
 Conc: 11.32 ng/ml

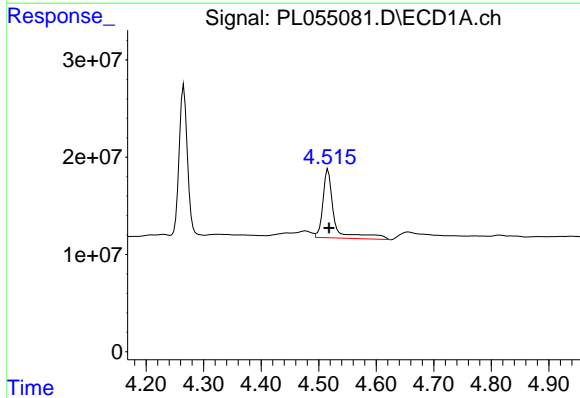


#3 gamma-BHC (Lindane)
 R.T.: 4.266 min
 Delta R.T.: -0.002 min
 Response: 151957984
 Conc: 8.91 ng/ml

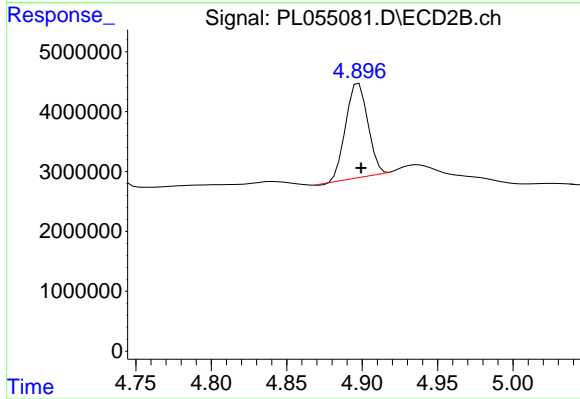
Instrument :
 ECD_L
 ClientSampled :



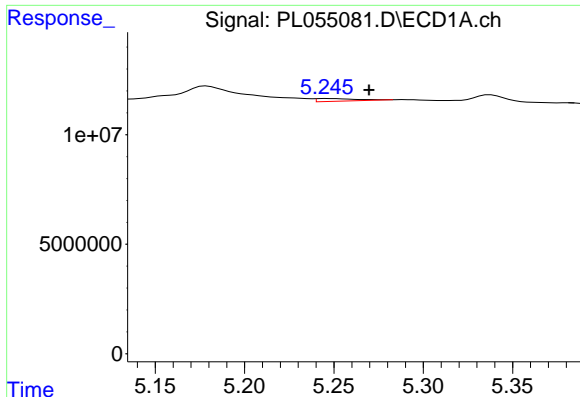
#3 gamma-BHC (Lindane)
 R.T.: 4.727 min
 Delta R.T.: -0.002 min
 Response: 36963825
 Conc: 11.34 ng/ml



#6 beta-BHC
 R.T.: 4.516 min
 Delta R.T.: -0.002 min
 Response: 97232281
 Conc: 13.11 ng/ml



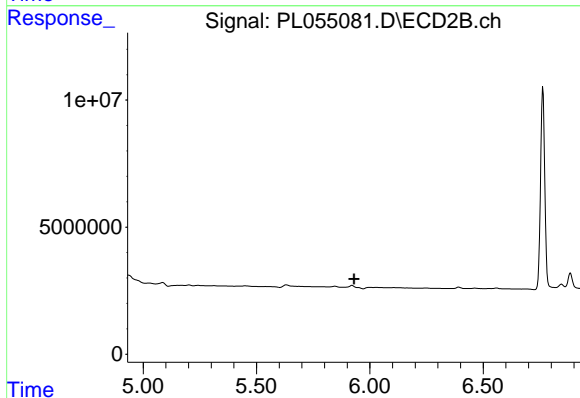
#6 beta-BHC
 R.T.: 4.898 min
 Delta R.T.: -0.001 min
 Response: 15998864
 Conc: 11.36 ng/ml



#8 Heptachlor epoxide

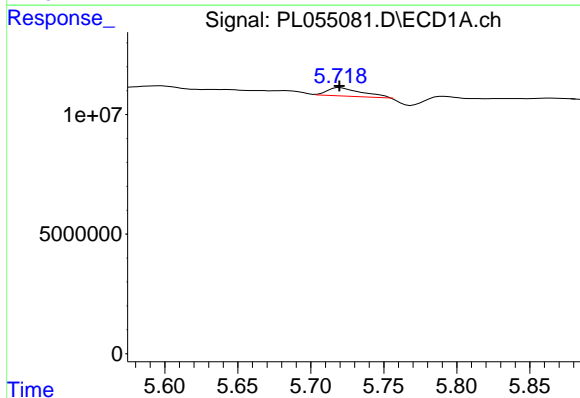
R.T.: 5.247 min
 Delta R.T.: -0.022 min
 Response: 1886459
 Conc: 0.12 ng/ml

Instrument :
 ECD_L
 ClientSampled :



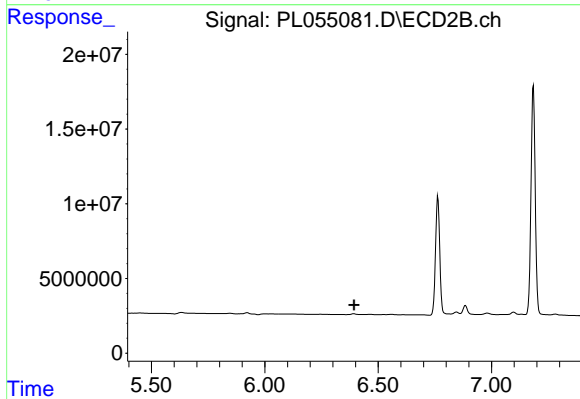
#8 Heptachlor epoxide

R.T.: 0.000 min
 Exp R.T. : 5.930 min
 Response: 0
 Conc: N.D.



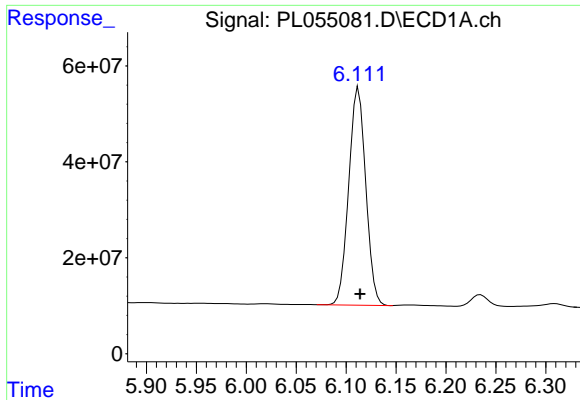
#12 4,4'-DDE

R.T.: 5.720 min
 Delta R.T.: 0.000 min
 Response: 5370140
 Conc: 0.40 ng/ml



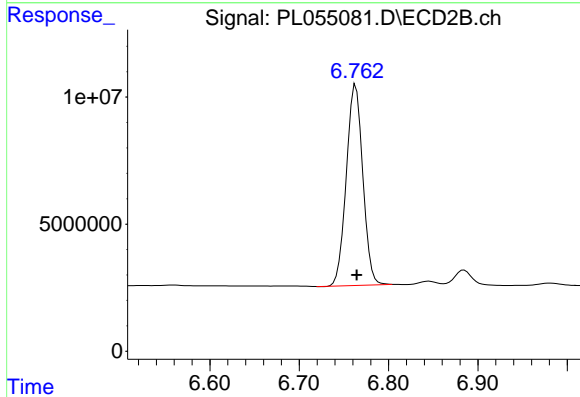
#12 4,4'-DDE

R.T.: 0.000 min
 Exp R.T. : 6.394 min
 Response: 0
 Conc: N.D.

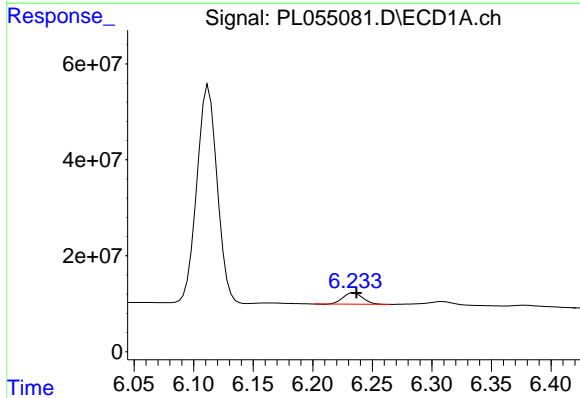


#14 Endrin
 R.T.: 6.113 min
 Delta R.T.: -0.001 min
 Response: 538408164
 Conc: 42.28 ng/ml

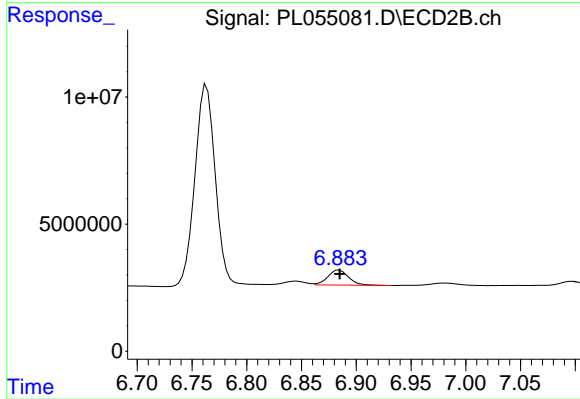
Instrument :
 ECD_L
 ClientSampled :



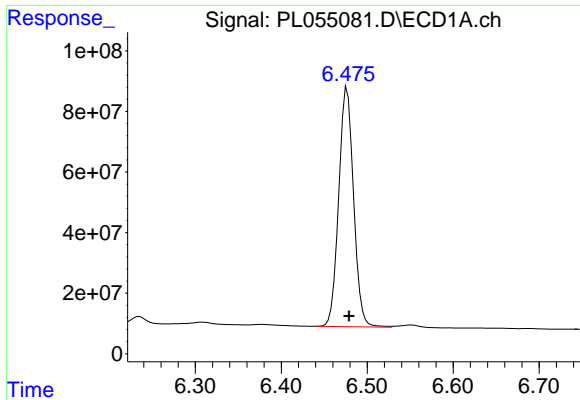
#14 Endrin
 R.T.: 6.763 min
 Delta R.T.: 0.000 min
 Response: 101496976
 Conc: 45.81 ng/ml



#16 4,4'-DDD
 R.T.: 6.235 min
 Delta R.T.: -0.002 min
 Response: 27459027
 Conc: 2.81 ng/ml



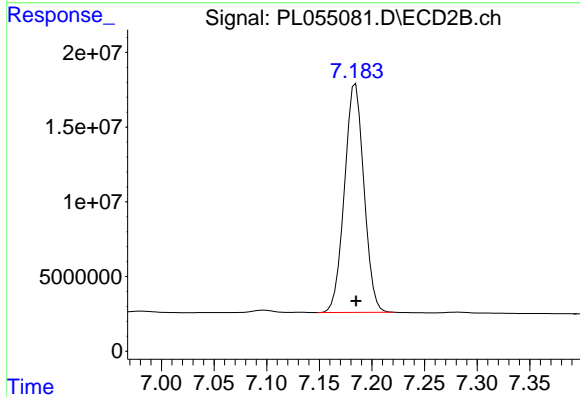
#16 4,4'-DDD
 R.T.: 6.885 min
 Delta R.T.: 0.000 min
 Response: 7839598
 Conc: 4.08 ng/ml



#17 4,4'-DDT

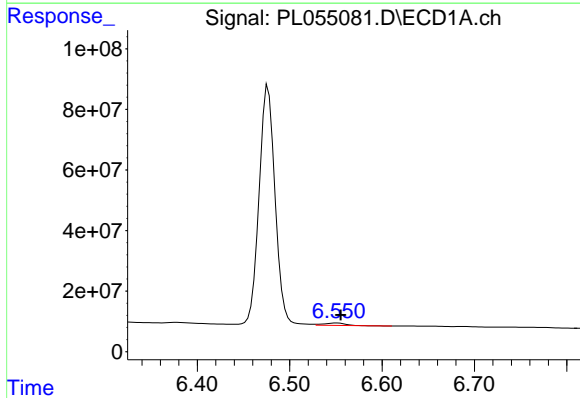
R.T.: 6.477 min
 Delta R.T.: -0.002 min
 Response: 946828614
 Conc: 90.38 ng/ml

Instrument :
 ECD_L
 ClientSampled :



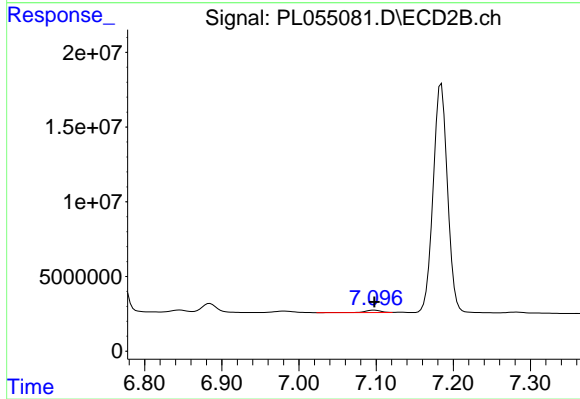
#17 4,4'-DDT

R.T.: 7.185 min
 Delta R.T.: 0.000 min
 Response: 197437888
 Conc: 99.65 ng/ml



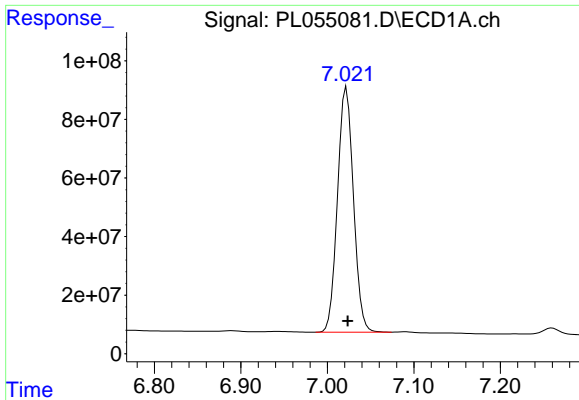
#18 Endrin aldehyde

R.T.: 6.552 min
 Delta R.T.: -0.004 min
 Response: 11236334
 Conc: 1.13 ng/ml



#18 Endrin aldehyde

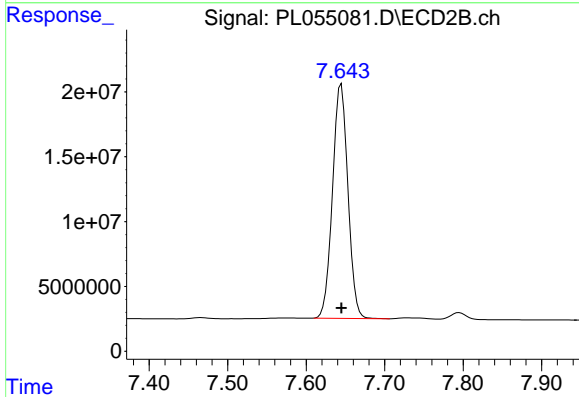
R.T.: 7.098 min
 Delta R.T.: 0.000 min
 Response: 2331876
 Conc: 1.19 ng/ml



#20 Methoxychlor

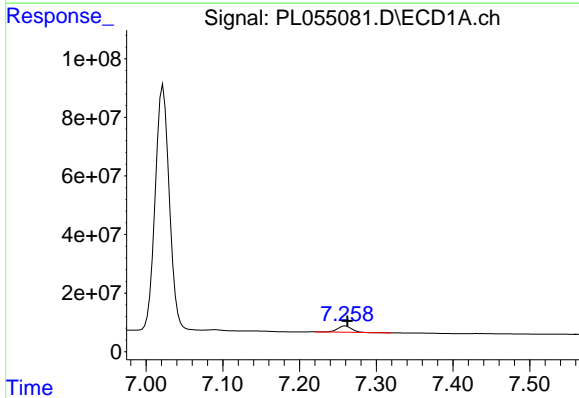
R.T.: 7.022 min
 Delta R.T.: -0.002 min
 Response: 1064900522
 Conc: 212.48 ng/ml

Instrument :
 ECD_L
 ClientSampleId :



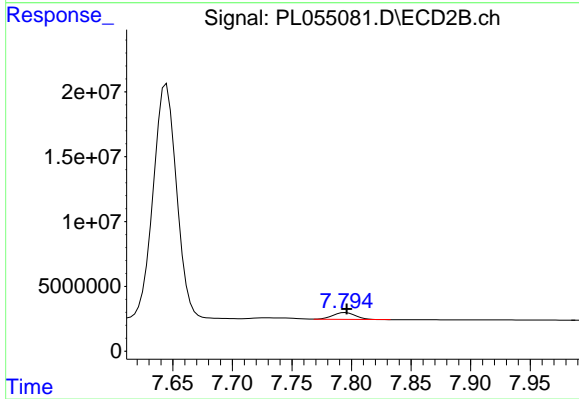
#20 Methoxychlor

R.T.: 7.645 min
 Delta R.T.: 0.000 min
 Response: 246929002
 Conc: 216.47 ng/ml



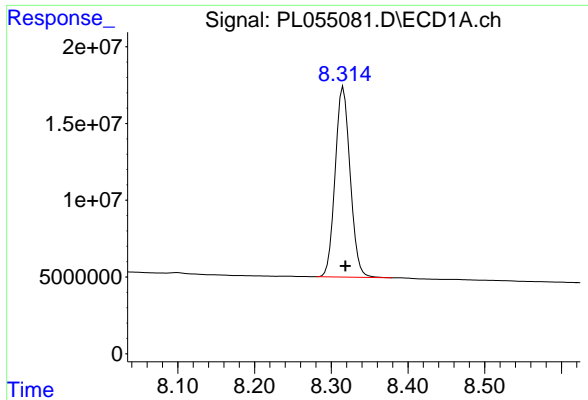
#21 Endrin ketone

R.T.: 7.260 min
 Delta R.T.: -0.003 min
 Response: 26551997
 Conc: 2.44 ng/ml



#21 Endrin ketone

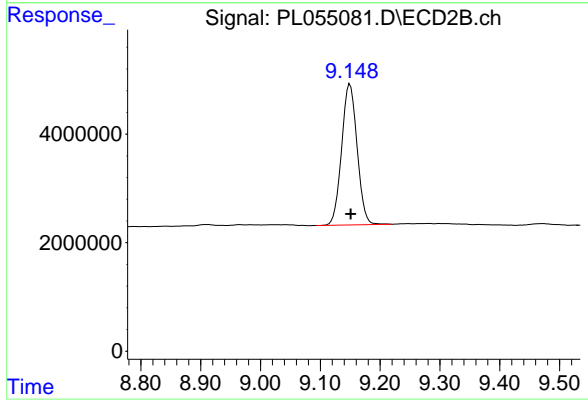
R.T.: 7.795 min
 Delta R.T.: -0.001 min
 Response: 6888663
 Conc: 3.06 ng/ml



#28 Decachlorobiphenyl

R.T.: 8.316 min
Delta R.T.: -0.003 min
Response: 168379950
Conc: 17.58 ng/ml

Instrument :
ECD_L
ClientSampleId :



#28 Decachlorobiphenyl

R.T.: 9.150 min
Delta R.T.: -0.001 min
Response: 46696379
Conc: 19.48 ng/ml