

Data Path : Z:\pestpcbsrv\HPCHEM1\ECD_L\Data\PL121819\
 Data File : PL055083.D
 Signal(s) : Signal #1: ECD1A.ch Signal #2: ECD2B.ch
 Acq On : 18 Dec 2019 18:34
 Operator : SG\AJ
 Sample : PB125585BL
 Misc :
 ALS Vial : 18 Sample Multiplier: 1

Instrument :
 ECD_L
 ClientSampleId :

Integration File signal 1: autoint1.e
 Integration File signal 2: autoint2.e
 Quant Time: Dec 19 02:13:28 2019
 Quant Method : Z:\pestpcbsrv\HPCHEM1\ECD_L\methods\PL112619.M
 Quant Title : GC Extractables
 QLast Update : Wed Dec 18 14:58:42 2019
 Response via : Initial Calibration
 Integrator: ChemStation

Volume Inj. : 1 µl
 Signal #1 Phase : ZB-MR2 Signal #2 Phase: ZB-MR1
 Signal #1 Info : 30M x 0.32mm x0.2 Signal #2 Info : 30M x 0.32mm x0.5µm

Compound	RT#1	RT#2	Resp#1	Resp#2	ng/ml	ng/ml

System Monitoring Compounds						
1) SA Tetrachlo...	3.542	4.050	216.6E6	57429709	18.615	22.505
2) SA Decachlor...	8.323	9.154	180.7E6	48440258	18.868	20.205
Target Compounds						
4) MA Heptachlor	4.582	0.000	8385809	0	0.476	N.D. #

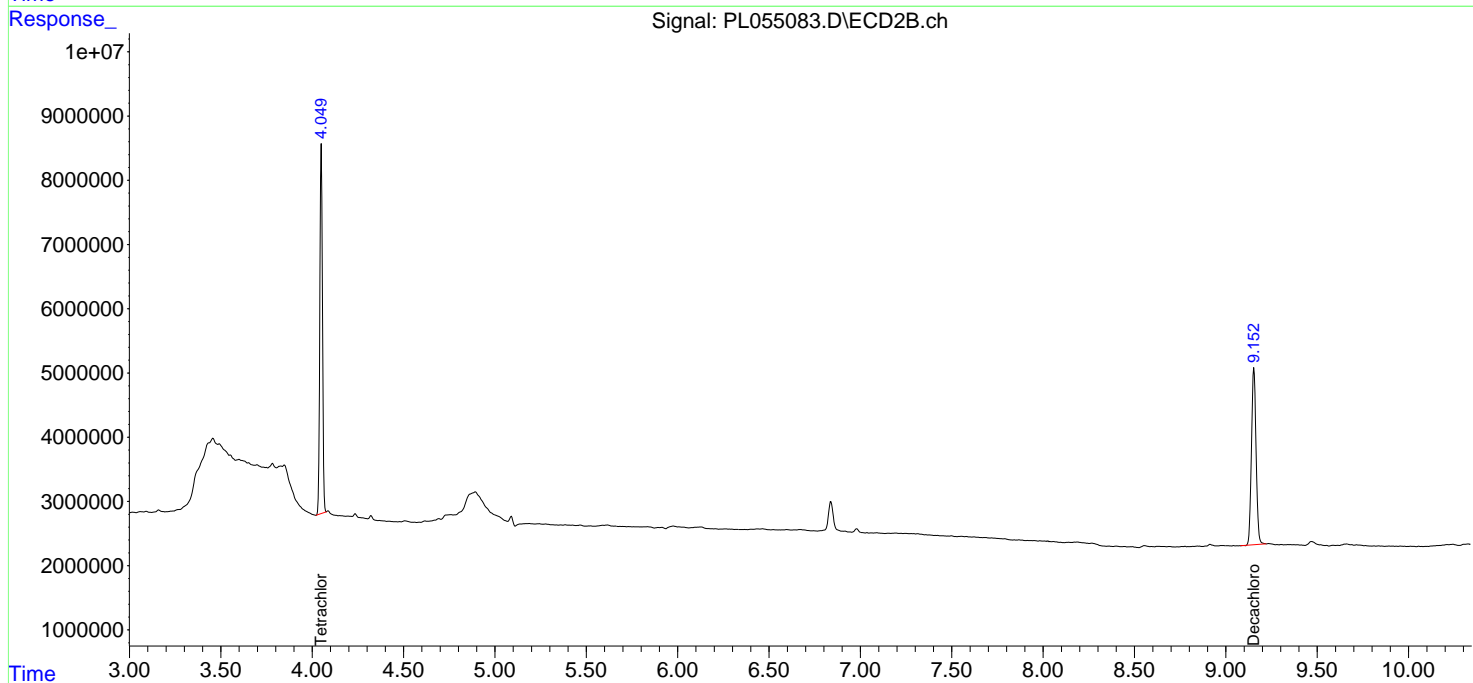
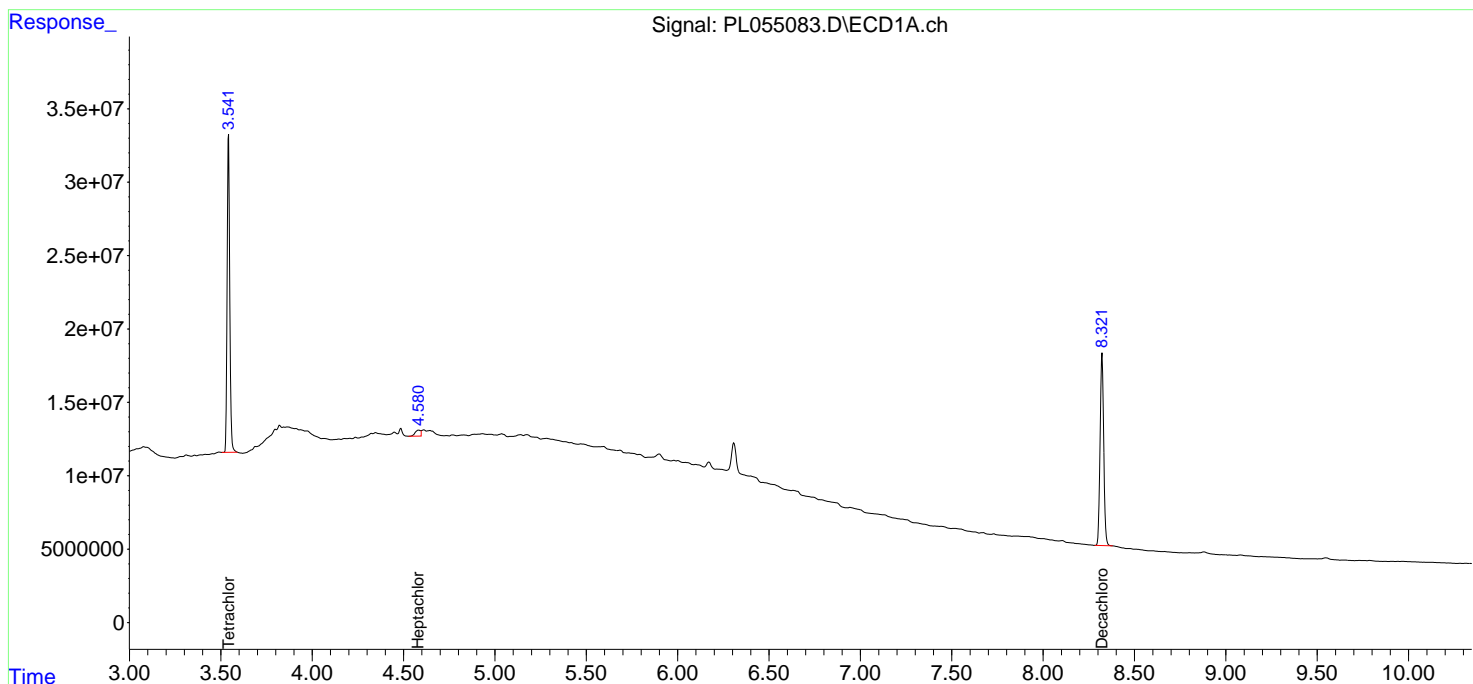
(f)=RT Delta > 1/2 Window (#)=Amounts differ by > 25% (m)=manual int.

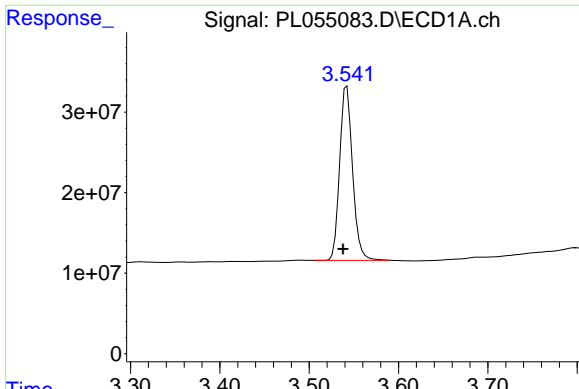
Data Path : Z:\pestpcbsrv\HPCHEM1\ECD_L\Data\PL121819\
 Data File : PL055083.D
 Signal(s) : Signal #1: ECD1A.ch Signal #2: ECD2B.ch
 Acq On : 18 Dec 2019 18:34
 Operator : SG\AJ
 Sample : PB125585BL
 Misc :
 ALS Vial : 18 Sample Multiplier: 1

Instrument :
 ECD_L
 ClientSampleId :

Integration File signal 1: autoint1.e
 Integration File signal 2: autoint2.e
 Quant Time: Dec 19 02:13:28 2019
 Quant Method : Z:\pestpcbsrv\HPCHEM1\ECD_L\methods\PL112619.M
 Quant Title : GC Extractables
 QLast Update : Wed Dec 18 14:58:42 2019
 Response via : Initial Calibration
 Integrator: ChemStation

Volume Inj. : 1 µl
 Signal #1 Phase : ZB-MR2 Signal #2 Phase: ZB-MR1
 Signal #1 Info : 30M x 0.32mm x0.2 Signal #2 Info : 30M x 0.32mm x0.5µm





#1 Tetrachloro-m-xylene

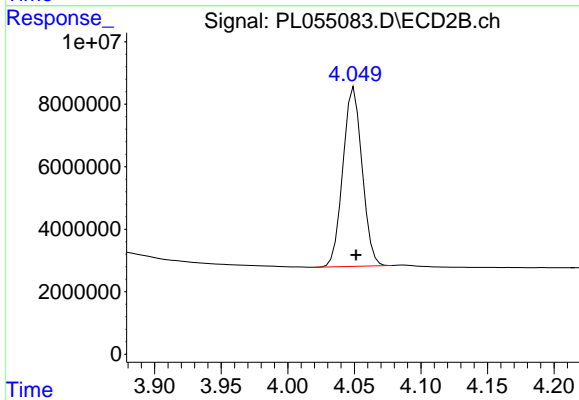
R.T.: 3.542 min

Delta R.T.: 0.004 min

Response: 216565257

Conc: 18.61 ng/ml

Instrument :
ECD_L
ClientSampled :



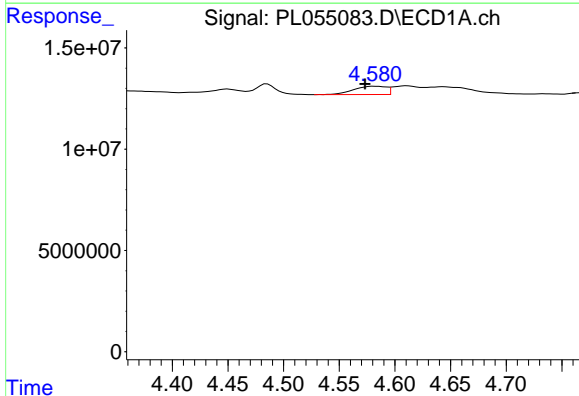
#1 Tetrachloro-m-xylene

R.T.: 4.050 min

Delta R.T.: -0.001 min

Response: 57429709

Conc: 22.51 ng/ml



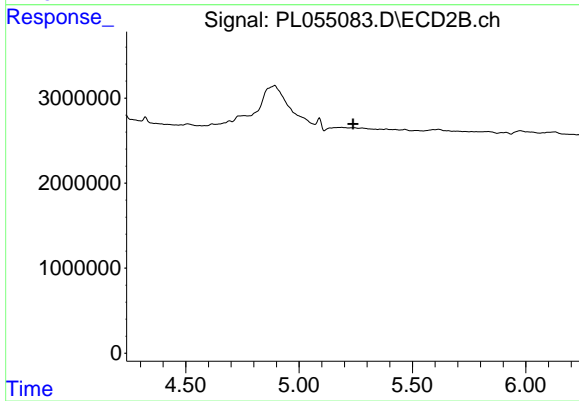
#4 Heptachlor

R.T.: 4.582 min

Delta R.T.: 0.008 min

Response: 8385809

Conc: 0.48 ng/ml



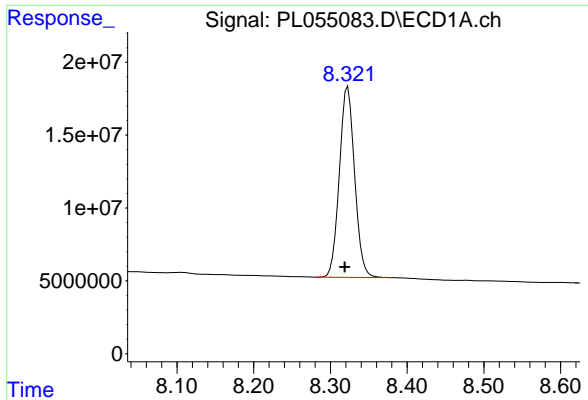
#4 Heptachlor

R.T.: 0.000 min

Exp R.T. : 5.238 min

Response: 0

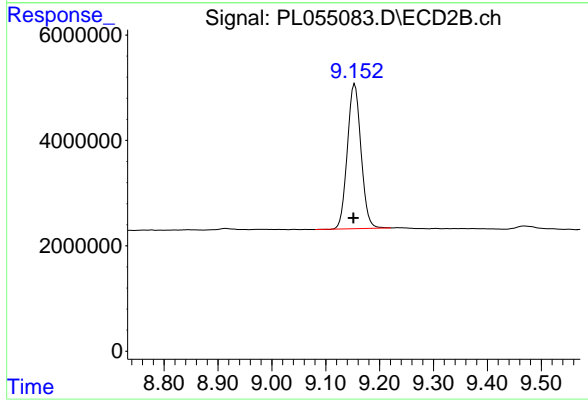
Conc: N.D.



#28 Decachlorobiphenyl

R.T.: 8.323 min
Delta R.T.: 0.004 min
Response: 180679766
Conc: 18.87 ng/ml

Instrument :
ECD_L
ClientSampleId :



#28 Decachlorobiphenyl

R.T.: 9.154 min
Delta R.T.: 0.003 min
Response: 48440258
Conc: 20.21 ng/ml