

Data Path : Z:\pestpcbsrv\HPCHEM1\ECD\_L\Data\PL121820\  
 Data File : PL063703.D  
 Signal(s) : Signal #1: ECD1A.ch Signal #2: ECD2B.ch  
 Acq On : 18 Dec 2020 15:25  
 Operator : DD\AJ  
 Sample : L5141-01MS  
 Misc :  
 ALS Vial : 20 Sample Multiplier: 1

Instrument :  
 ECD\_L  
 ClientSampleId :

Integration File signal 1: autoint1.e  
 Integration File signal 2: autoint2.e  
 Quant Time: Dec 18 15:45:58 2020  
 Quant Method : Z:\pestpcbsrv\HPCHEM1\ECD\_L\methods\PL121620.M  
 Quant Title : GC Extractables  
 QLast Update : Thu Dec 17 09:38:50 2020  
 Response via : Initial Calibration  
 Integrator: ChemStation

Volume Inj. : 1 µl  
 Signal #1 Phase : ZB-MR2 Signal #2 Phase: ZB-MR1  
 Signal #1 Info : 30M x 0.32mm x0.2 Signal #2 Info : 30M x 0.32mm x0.5µm

	Compound	RT#1	RT#2	Resp#1	Resp#2	ng/ml	ng/ml
-----							
System Monitoring Compounds							
1)	SA Tetrachlo...	3.478	4.147	29619704	64885212	14.562	20.341 #
28)	SA Decachlor...	8.221	9.333	27305553	33416873	12.498	12.473
Target Compounds							
2)	A alpha-BHC	3.915	4.552	170.8E6	247.1E6	52.478	52.672
3)	MA gamma-BHC...	4.198	4.844	159.1E6	231.9E6	52.798	53.160
4)	MA Heptachlor	4.500	5.359	169.1E6	227.7E6	54.603	53.915
5)	MB Aldrin	4.747	5.671	160.4E6	210.0E6	55.909	54.817
6)	B beta-BHC	4.446	5.019	73295310	106.5E6	56.925	51.290
7)	B delta-BHC	4.650	5.242	148.4E6	189.1E6	48.360	46.959
8)	Heptachlo...	5.188	6.065	152.3E6	194.6E6	55.413	53.379
9)	A Endosulfan I	5.525	6.429	141.9E6	171.0E6	54.803	52.975
10)	B gamma-Chl...	5.415	6.301	156.9E6	186.2E6	56.470	51.770
11)	B alpha-Chl...	5.472	6.374	152.2E6	183.2E6	55.148	52.604
12)	B 4,4'-DDE	5.637	6.529	139.7E6	172.3E6	56.809	53.370
13)	MA Dieldrin	5.767	6.689	144.6E6	178.7E6	55.026	51.646
14)	MA Endrin	6.023	6.912	123.7E6	125.7E6	52.396	47.435
15)	B Endosulfa...	6.294	7.125	119.3E6	144.1E6	49.115	49.319
16)	A 4,4'-DDD	6.150	7.028	119.2E6	144.7E6	57.977	53.493
17)	MA 4,4'-DDT	6.391	7.329	106.3E6	129.7E6	54.790	53.348
18)	B Endrin al...	6.462	7.250	95873753	117.1E6	46.874	47.588
19)	B Endosulfa...	6.674	7.474	121.0E6	140.7E6	52.288	48.982
20)	A Methoxychlor	6.937	7.787	59311960	72623542	51.611	51.973
21)	B Endrin ke...	7.162	7.955	136.6E6	158.1E6	50.729	52.741
22)	Mirex	7.352	8.409	105.5E6	114.4E6	53.406	52.199
24)	Chlordane-2	0.000	5.671f	0	210.0E6	N.D.	1685.325 #
25)	Chlordane-3	5.415	6.301	156.9E6	186.2E6	637.837	402.648 #
26)	Chlordane-4	5.472	6.374	152.2E6	183.2E6	750.335	334.170 #
27)	Chlordane-5	6.294f	0.000	119.3E6	0	1420.628	N.D. #

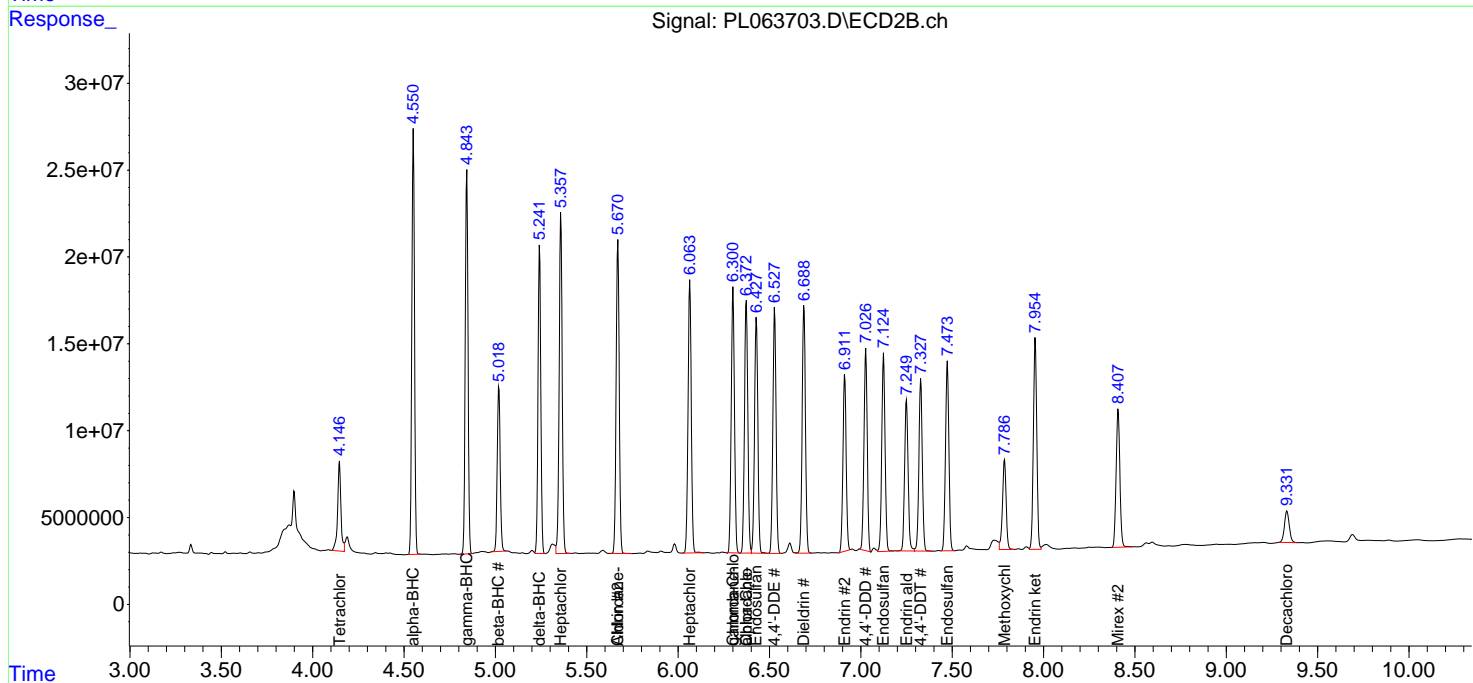
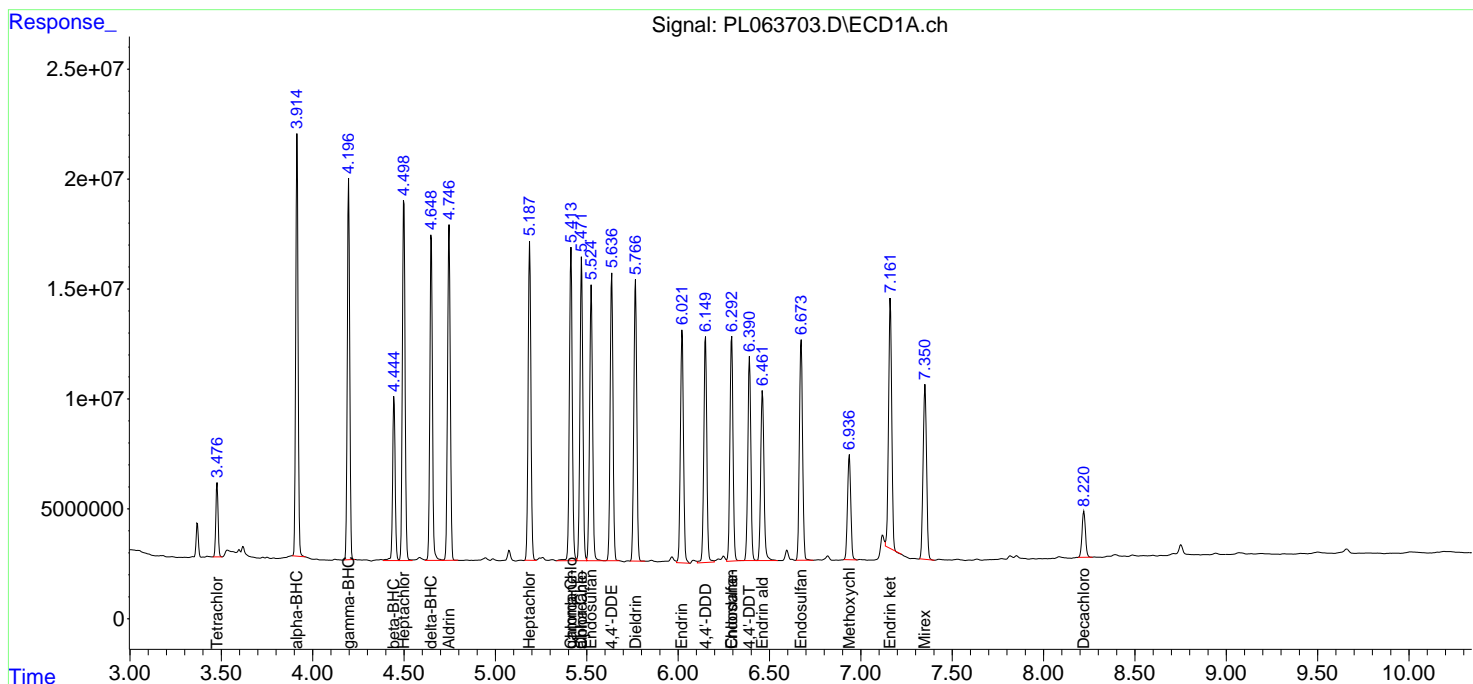
(f)=RT Delta > 1/2 Window (#)=Amounts differ by > 25% (m)=manual int.

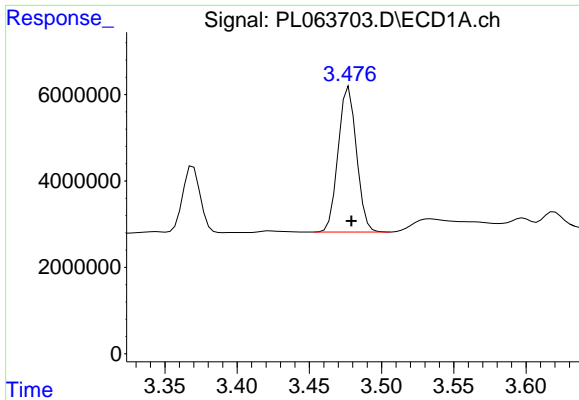
Data Path : Z:\pestpcbsrv\HPCHEM1\ECD\_L\Data\PL121820\  
 Data File : PL063703.D  
 Signal(s) : Signal #1: ECD1A.ch Signal #2: ECD2B.ch  
 Acq On : 18 Dec 2020 15:25  
 Operator : DD\AJ  
 Sample : L5141-01MS  
 Misc :  
 ALS Vial : 20 Sample Multiplier: 1

Instrument :  
 ECD\_L  
 ClientSampled :

Integration File signal 1: autoint1.e  
 Integration File signal 2: autoint2.e  
 Quant Time: Dec 18 15:45:58 2020  
 Quant Method : Z:\pestpcbsrv\HPCHEM1\ECD\_L\methods\PL121620.M  
 Quant Title : GC Extractables  
 QLast Update : Thu Dec 17 09:38:50 2020  
 Response via : Initial Calibration  
 Integrator: ChemStation

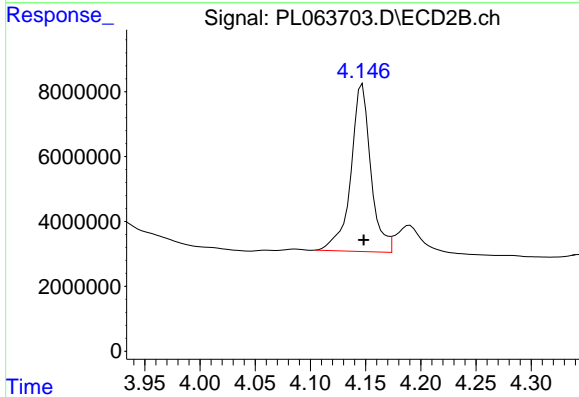
Volume Inj. : 1 µl  
 Signal #1 Phase : ZB-MR2 Signal #2 Phase: ZB-MR1  
 Signal #1 Info : 30M x 0.32mm x0.2 Signal #2 Info : 30M x 0.32mm x0.5µm



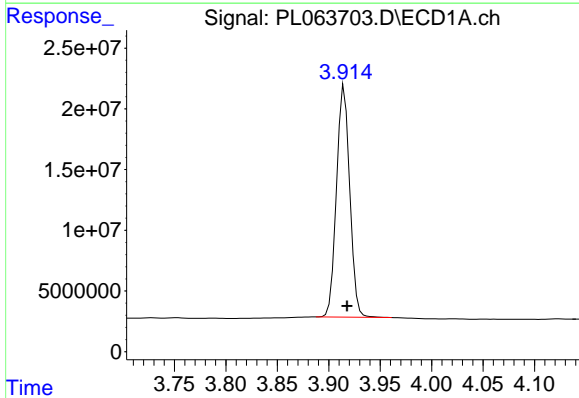


#1 Tetrachloro-m-xylene  
 R.T.: 3.478 min  
 Delta R.T.: -0.001 min  
 Response: 29619704  
 Conc: 14.56 ng/ml

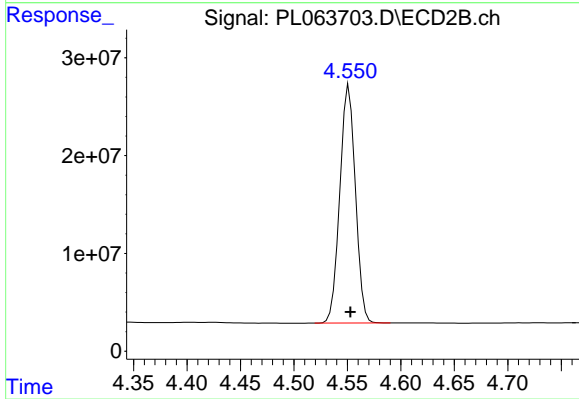
Instrument :  
 ECD\_L  
 ClientSampled :



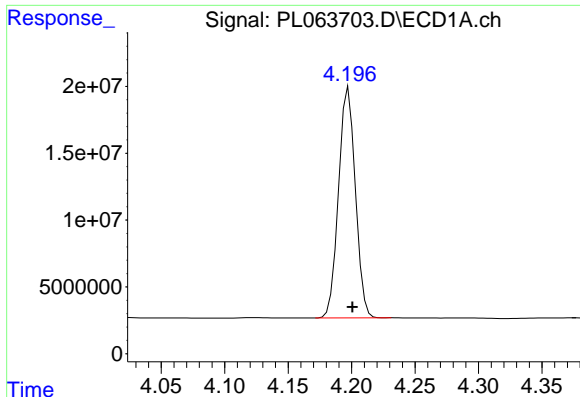
#1 Tetrachloro-m-xylene  
 R.T.: 4.147 min  
 Delta R.T.: -0.001 min  
 Response: 64885212  
 Conc: 20.34 ng/ml



#2 alpha-BHC  
 R.T.: 3.915 min  
 Delta R.T.: -0.003 min  
 Response: 170799070  
 Conc: 52.48 ng/ml



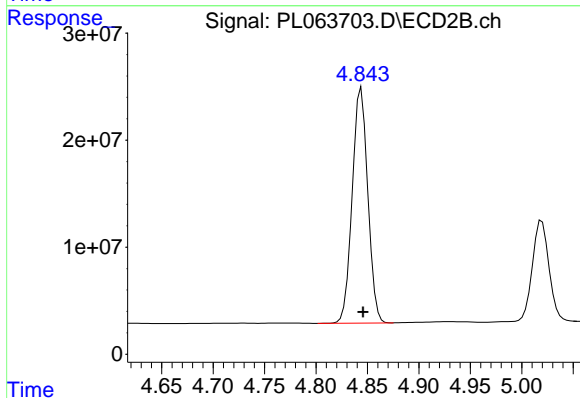
#2 alpha-BHC  
 R.T.: 4.552 min  
 Delta R.T.: -0.001 min  
 Response: 247109773  
 Conc: 52.67 ng/ml



#3 gamma-BHC (Lindane)

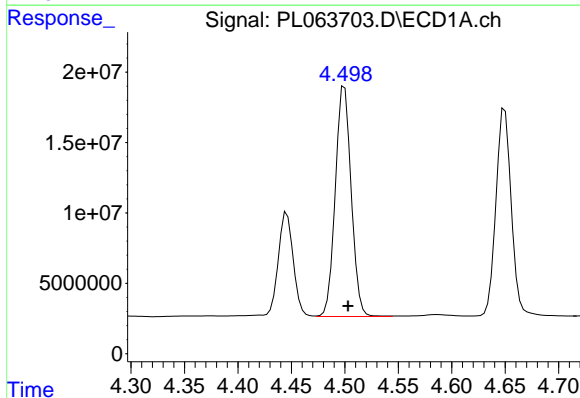
R.T.: 4.198 min  
 Delta R.T.: -0.003 min  
 Response: 159067451  
 Conc: 52.80 ng/ml

Instrument :  
 ECD\_L  
 ClientSampleId :



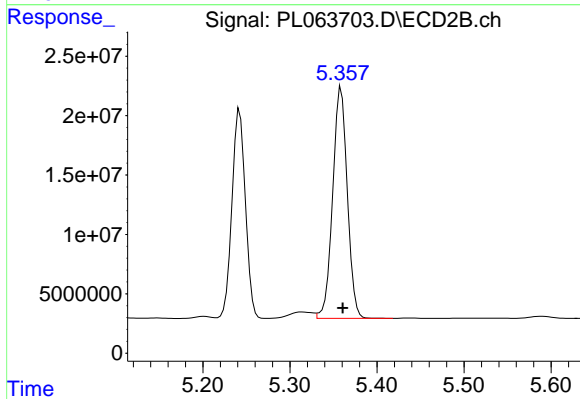
#3 gamma-BHC (Lindane)

R.T.: 4.844 min  
 Delta R.T.: -0.002 min  
 Response: 231881149  
 Conc: 53.16 ng/ml



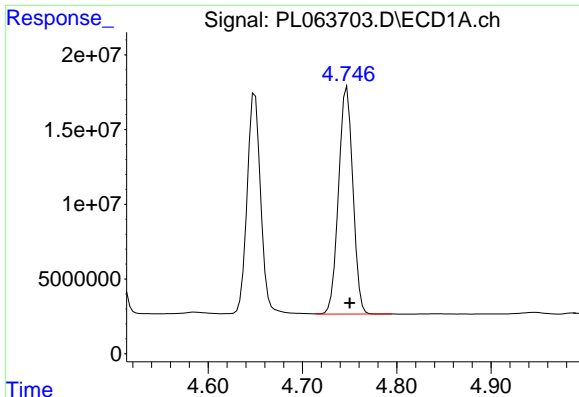
#4 Heptachlor

R.T.: 4.500 min  
 Delta R.T.: -0.003 min  
 Response: 169054867  
 Conc: 54.60 ng/ml



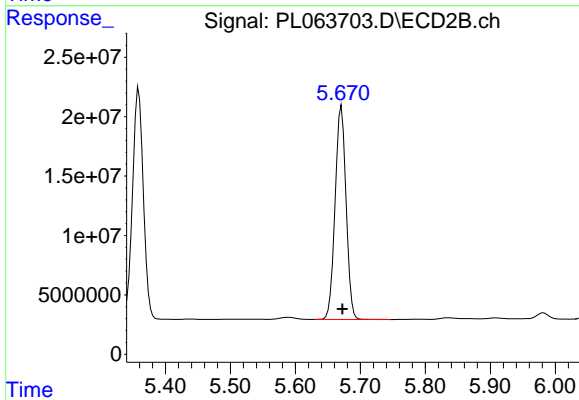
#4 Heptachlor

R.T.: 5.359 min  
 Delta R.T.: -0.002 min  
 Response: 227680803  
 Conc: 53.91 ng/ml

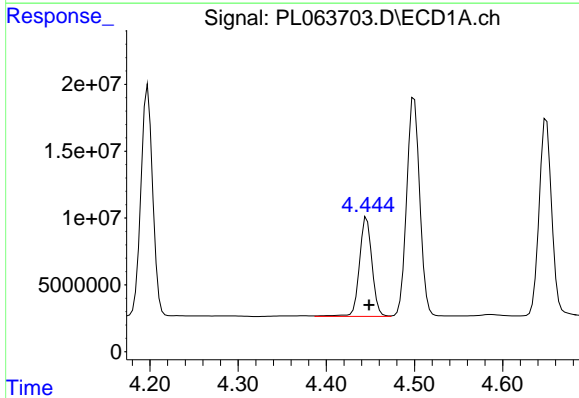


#5 Aldrin  
 R.T.: 4.747 min  
 Delta R.T.: -0.003 min  
 Response: 160424275  
 Conc: 55.91 ng/ml

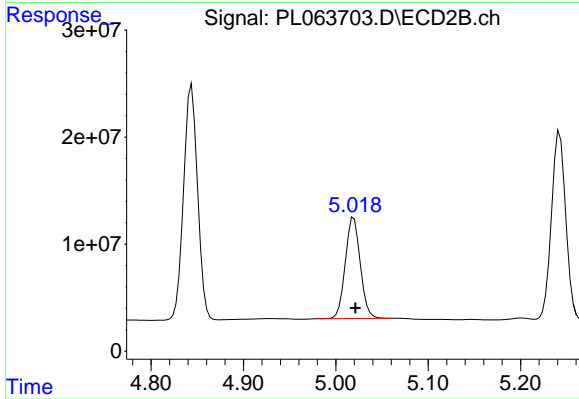
Instrument :  
 ECD\_L  
 ClientSampleId :



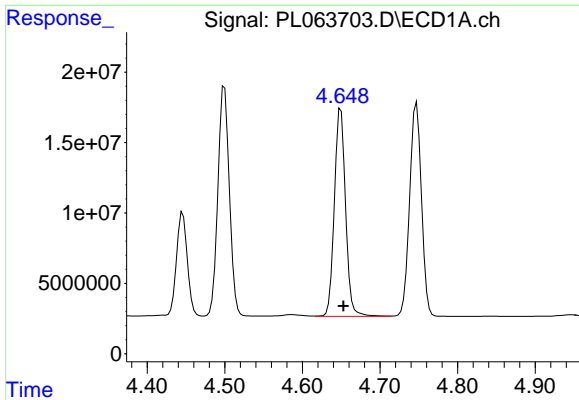
#5 Aldrin  
 R.T.: 5.671 min  
 Delta R.T.: -0.002 min  
 Response: 210047275  
 Conc: 54.82 ng/ml



#6 beta-BHC  
 R.T.: 4.446 min  
 Delta R.T.: -0.003 min  
 Response: 73295310  
 Conc: 56.93 ng/ml

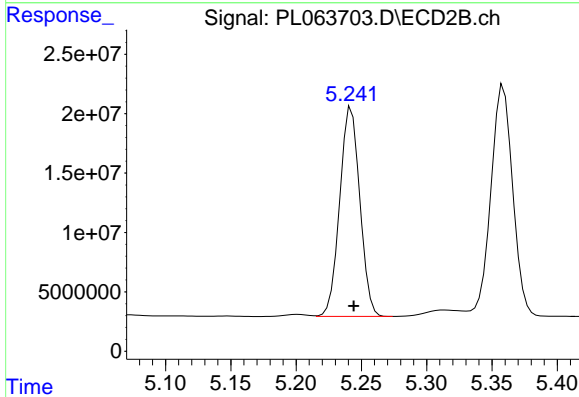


#6 beta-BHC  
 R.T.: 5.019 min  
 Delta R.T.: -0.002 min  
 Response: 106492209  
 Conc: 51.29 ng/ml

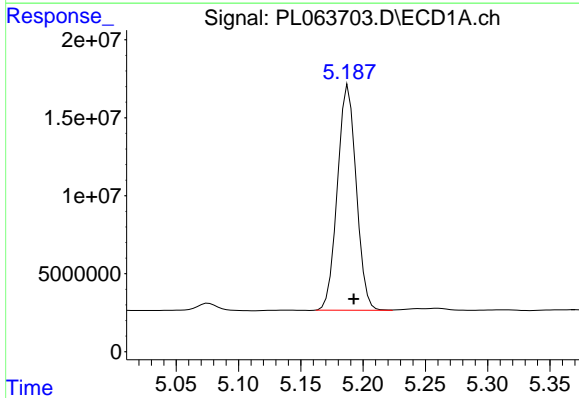


#7 delta-BHC  
R.T.: 4.650 min  
Delta R.T.: -0.003 min  
Response: 148445710  
Conc: 48.36 ng/ml

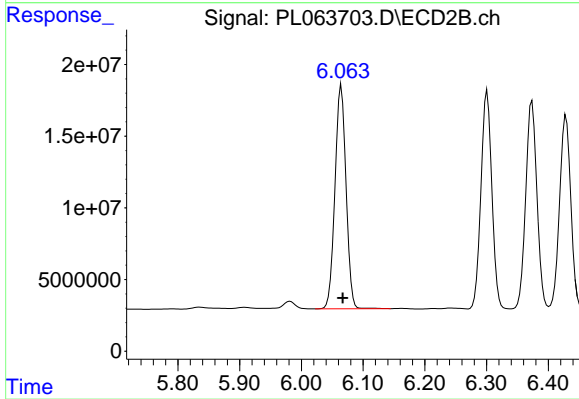
Instrument :  
ECD\_L  
ClientSampleId :



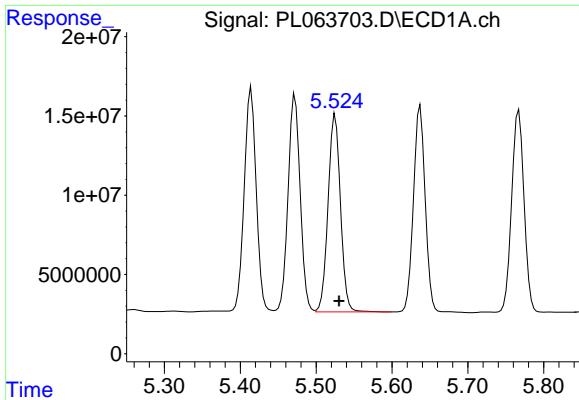
#7 delta-BHC  
R.T.: 5.242 min  
Delta R.T.: -0.002 min  
Response: 189100302  
Conc: 46.96 ng/ml



#8 Heptachlor epoxide  
R.T.: 5.188 min  
Delta R.T.: -0.004 min  
Response: 152276777  
Conc: 55.41 ng/ml

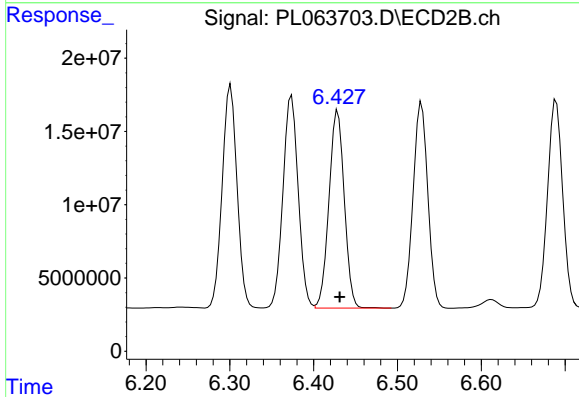


#8 Heptachlor epoxide  
R.T.: 6.065 min  
Delta R.T.: -0.003 min  
Response: 194561023  
Conc: 53.38 ng/ml

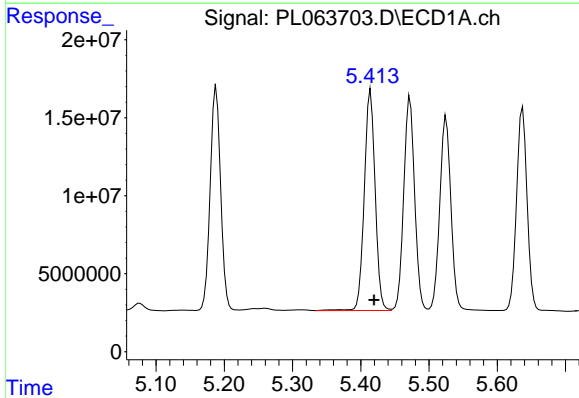


#9 Endosulfan I  
 R.T.: 5.525 min  
 Delta R.T.: -0.005 min  
 Response: 141939626  
 Conc: 54.80 ng/ml

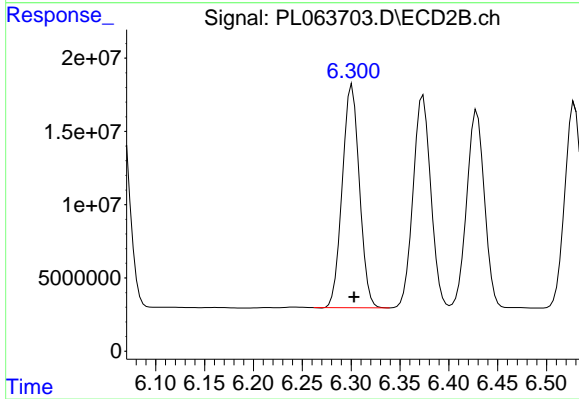
Instrument :  
 ECD\_L  
 ClientSampled :



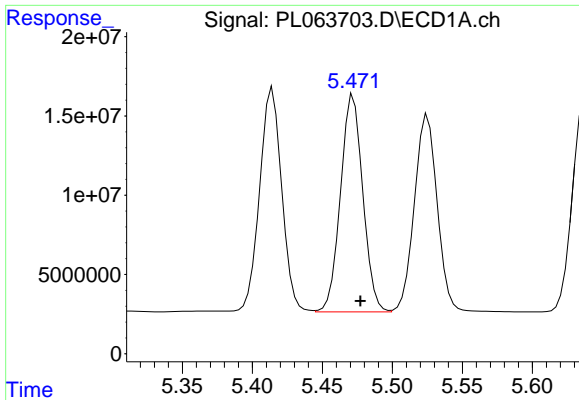
#9 Endosulfan I  
 R.T.: 6.429 min  
 Delta R.T.: -0.002 min  
 Response: 171000476  
 Conc: 52.97 ng/ml



#10 gamma-Chlordane  
 R.T.: 5.415 min  
 Delta R.T.: -0.005 min  
 Response: 156905553  
 Conc: 56.47 ng/ml

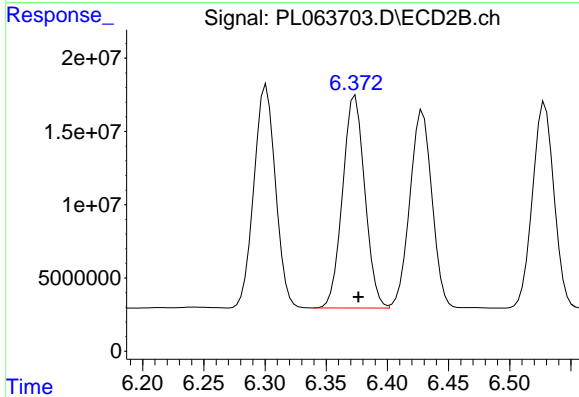


#10 gamma-Chlordane  
 R.T.: 6.301 min  
 Delta R.T.: -0.002 min  
 Response: 186157029  
 Conc: 51.77 ng/ml

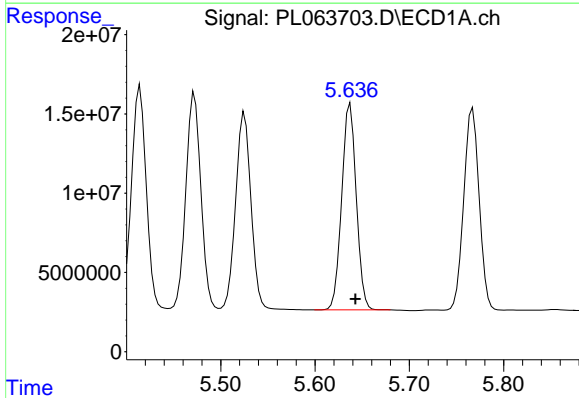


#11 alpha-Chlordane  
 R.T.: 5.472 min  
 Delta R.T.: -0.005 min  
 Response: 152218520  
 Conc: 55.15 ng/ml

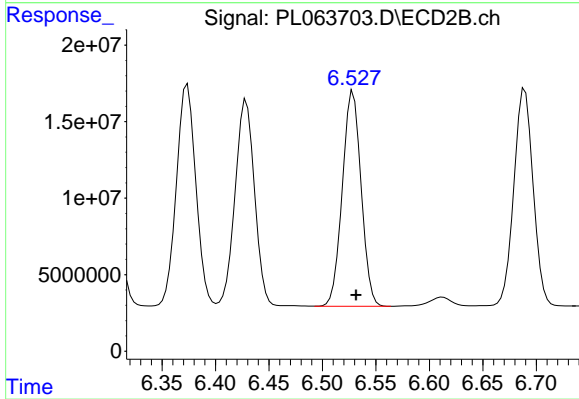
Instrument :  
 ECD\_L  
 ClientSampled :



#11 alpha-Chlordane  
 R.T.: 6.374 min  
 Delta R.T.: -0.002 min  
 Response: 183200904  
 Conc: 52.60 ng/ml

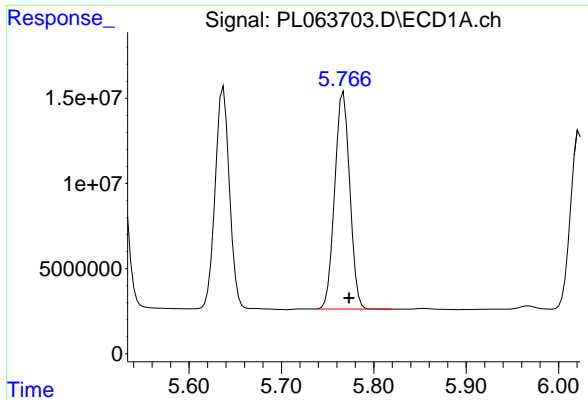


#12 4,4'-DDE  
 R.T.: 5.637 min  
 Delta R.T.: -0.005 min  
 Response: 139678502  
 Conc: 56.81 ng/ml



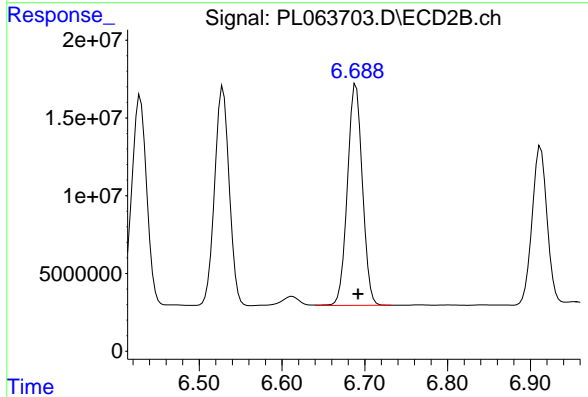
#12 4,4'-DDE  
 R.T.: 6.529 min  
 Delta R.T.: -0.003 min  
 Response: 172301297  
 Conc: 53.37 ng/ml



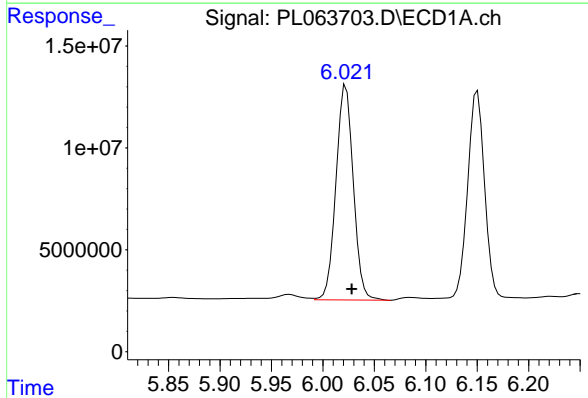


#13 Dieldrin  
 R.T.: 5.767 min  
 Delta R.T.: -0.006 min  
 Response: 144581866  
 Conc: 55.03 ng/ml

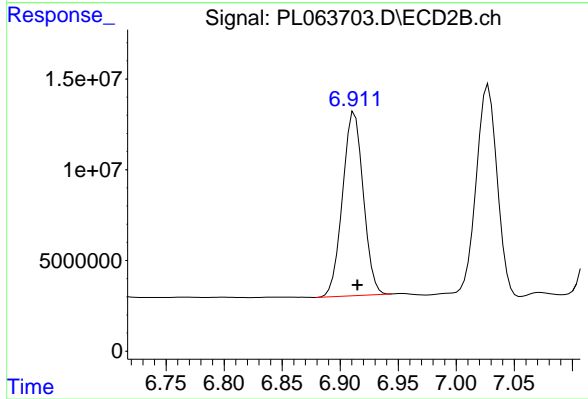
Instrument :  
 ECD\_L  
 ClientSampleId :



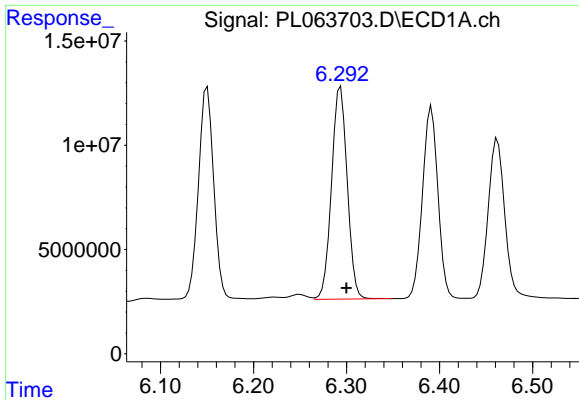
#13 Dieldrin  
 R.T.: 6.689 min  
 Delta R.T.: -0.003 min  
 Response: 178697560  
 Conc: 51.65 ng/ml



#14 Endrin  
 R.T.: 6.023 min  
 Delta R.T.: -0.006 min  
 Response: 123728028  
 Conc: 52.40 ng/ml

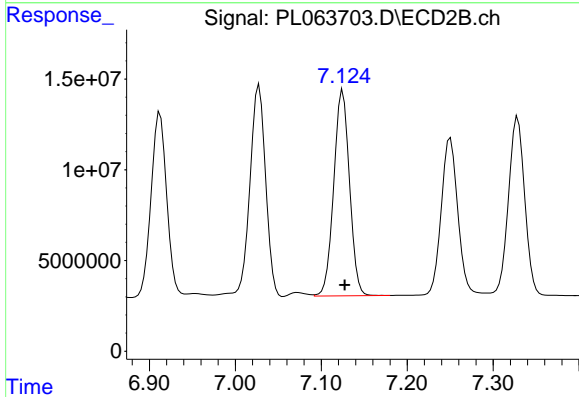


#14 Endrin  
 R.T.: 6.912 min  
 Delta R.T.: -0.003 min  
 Response: 125735956  
 Conc: 47.44 ng/ml

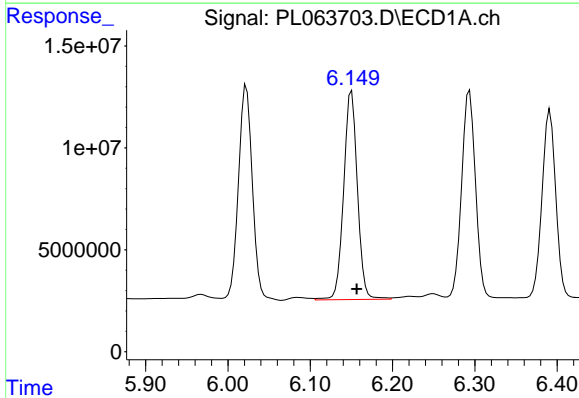


#15 Endosulfan II  
R.T.: 6.294 min  
Delta R.T.: -0.006 min  
Response: 119334557  
Conc: 49.11 ng/ml

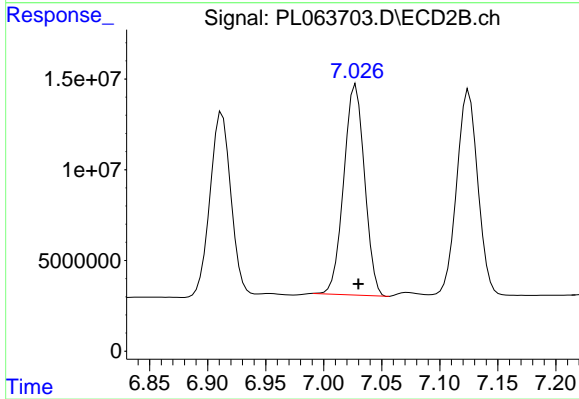
Instrument :  
ECD\_L  
ClientSampled :



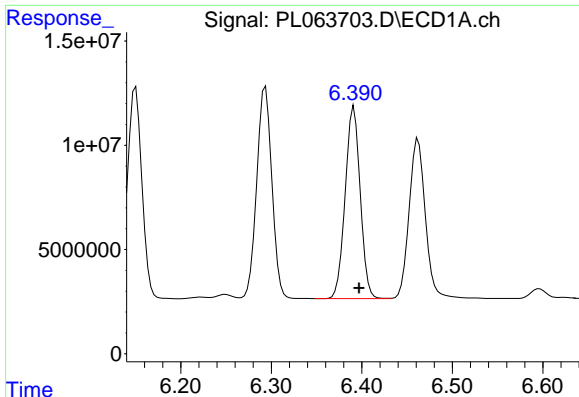
#15 Endosulfan II  
R.T.: 7.125 min  
Delta R.T.: -0.002 min  
Response: 144144835  
Conc: 49.32 ng/ml



#16 4,4'-DDD  
R.T.: 6.150 min  
Delta R.T.: -0.006 min  
Response: 119198003  
Conc: 57.98 ng/ml



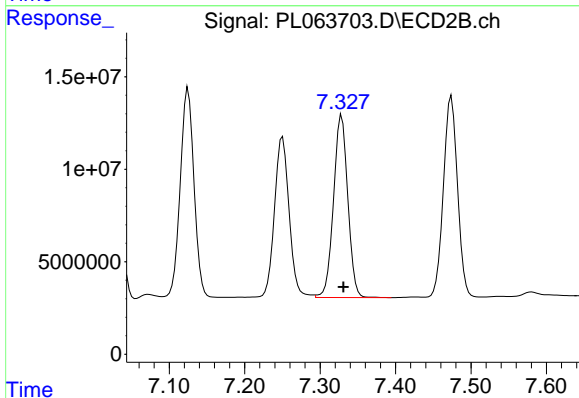
#16 4,4'-DDD  
R.T.: 7.028 min  
Delta R.T.: -0.002 min  
Response: 144695839  
Conc: 53.49 ng/ml



#17 4,4'-DDT

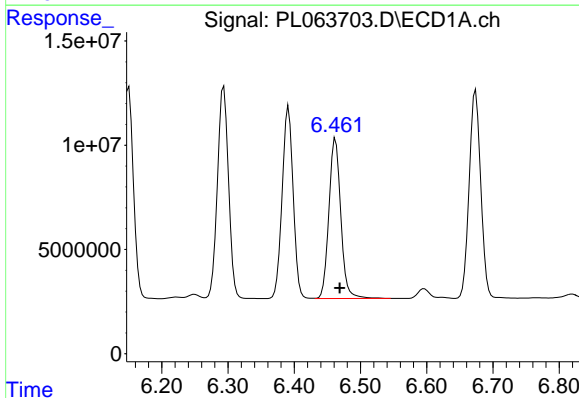
R.T.: 6.391 min  
 Delta R.T.: -0.005 min  
 Response: 106344046  
 Conc: 54.79 ng/ml

Instrument :  
 ECD\_L  
 ClientSampled :



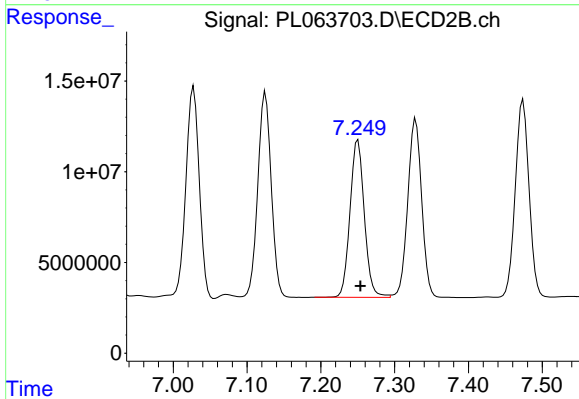
#17 4,4'-DDT

R.T.: 7.329 min  
 Delta R.T.: -0.002 min  
 Response: 129674023  
 Conc: 53.35 ng/ml



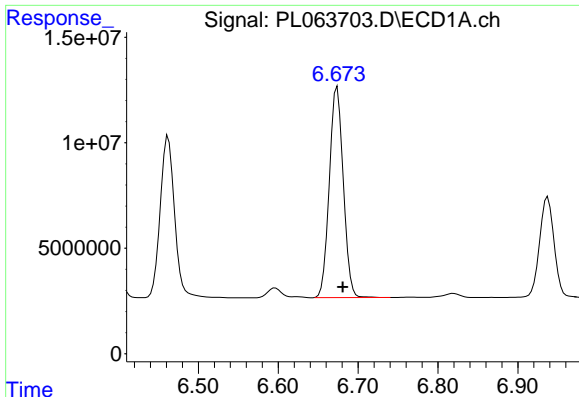
#18 Endrin aldehyde

R.T.: 6.462 min  
 Delta R.T.: -0.006 min  
 Response: 95873753  
 Conc: 46.87 ng/ml



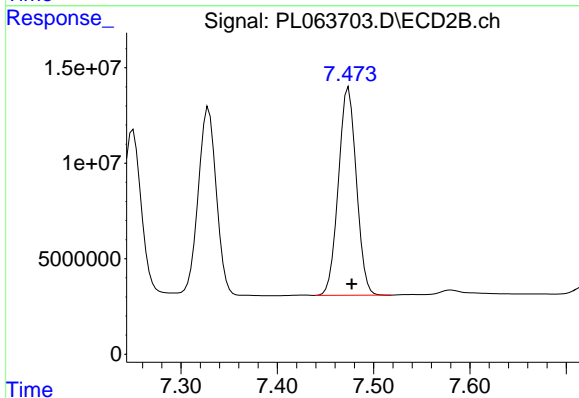
#18 Endrin aldehyde

R.T.: 7.250 min  
 Delta R.T.: -0.003 min  
 Response: 117138719  
 Conc: 47.59 ng/ml

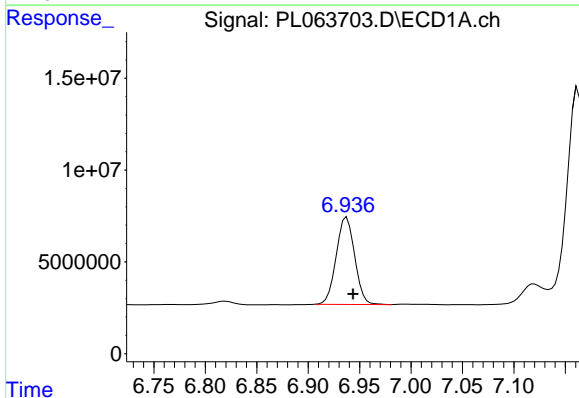


#19 Endosulfan Sulfate  
 R.T.: 6.674 min  
 Delta R.T.: -0.007 min  
 Response: 121030465  
 Conc: 52.29 ng/ml

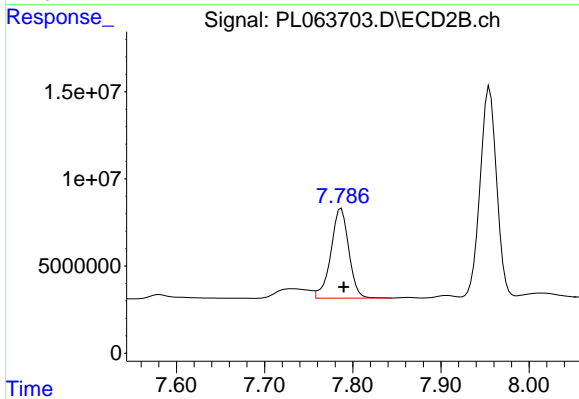
Instrument :  
 ECD\_L  
 ClientSampled :



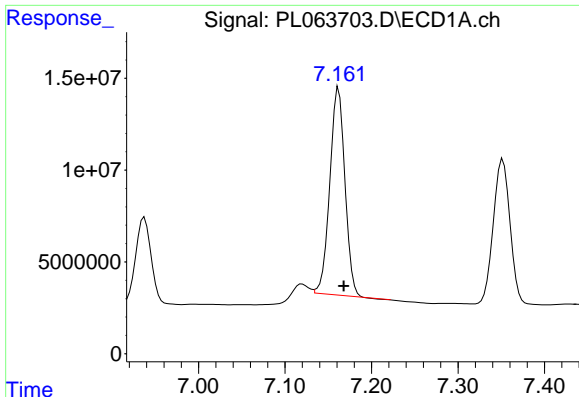
#19 Endosulfan Sulfate  
 R.T.: 7.474 min  
 Delta R.T.: -0.003 min  
 Response: 140730912  
 Conc: 48.98 ng/ml



#20 Methoxychlor  
 R.T.: 6.937 min  
 Delta R.T.: -0.006 min  
 Response: 59311960  
 Conc: 51.61 ng/ml



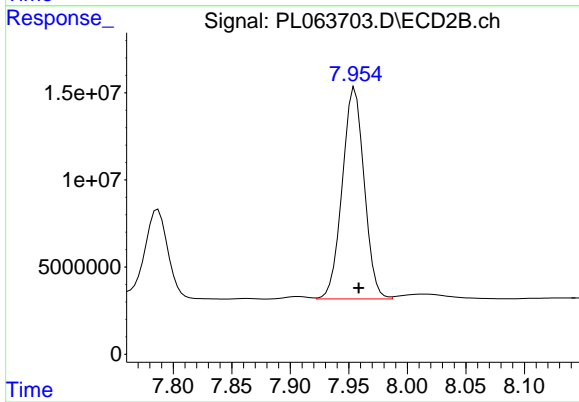
#20 Methoxychlor  
 R.T.: 7.787 min  
 Delta R.T.: -0.003 min  
 Response: 72623542  
 Conc: 51.97 ng/ml



#21 Endrin ketone

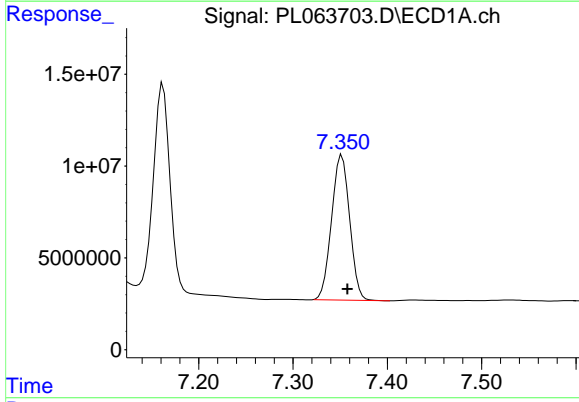
R.T.: 7.162 min  
 Delta R.T.: -0.006 min  
 Response: 136585879  
 Conc: 50.73 ng/ml

Instrument :  
 ECD\_L  
 ClientSampled :



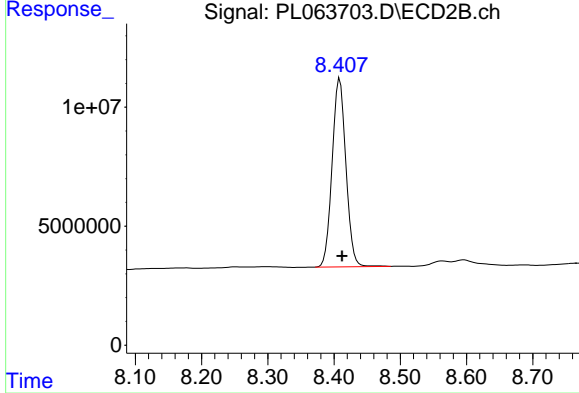
#21 Endrin ketone

R.T.: 7.955 min  
 Delta R.T.: -0.003 min  
 Response: 158083368  
 Conc: 52.74 ng/ml



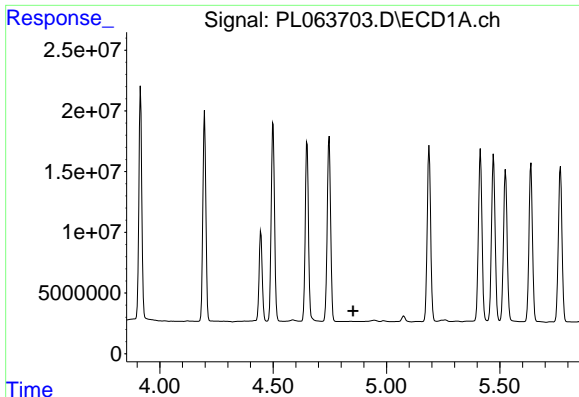
#22 Mirex

R.T.: 7.352 min  
 Delta R.T.: -0.006 min  
 Response: 105454717  
 Conc: 53.41 ng/ml



#22 Mirex

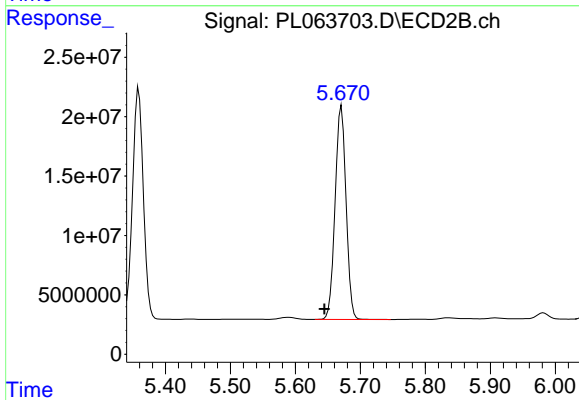
R.T.: 8.409 min  
 Delta R.T.: -0.003 min  
 Response: 114425960  
 Conc: 52.20 ng/ml



#24 Chlordane-2

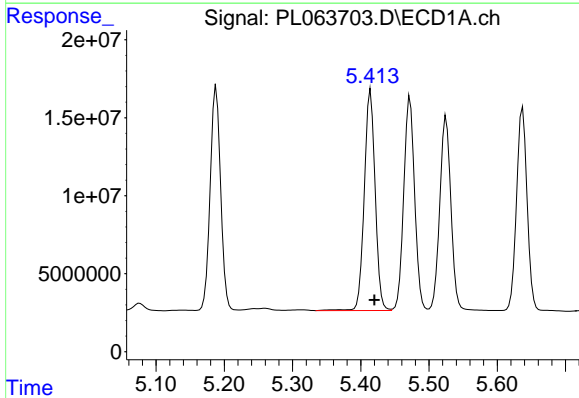
R.T.: 0.000 min  
 Exp R.T.: 4.852 min  
 Response: 0  
 Conc: N.D.

Instrument :  
 ECD\_L  
 ClientSampled :



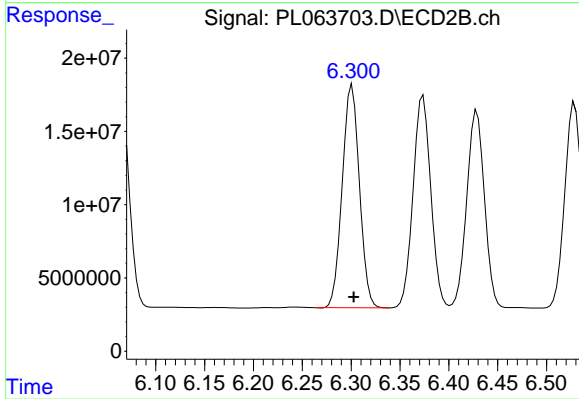
#24 Chlordane-2

R.T.: 5.671 min  
 Delta R.T.: 0.026 min  
 Response: 210047275  
 Conc: 1685.33 ng/ml



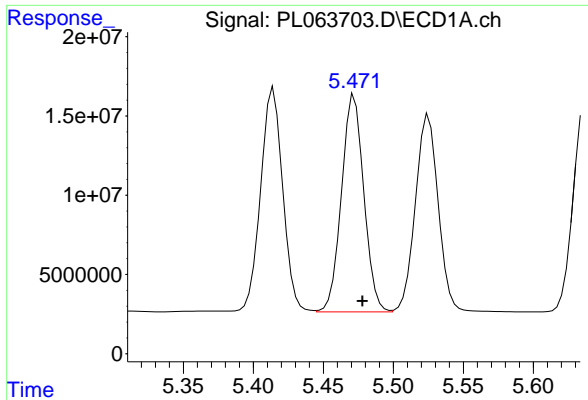
#25 Chlordane-3

R.T.: 5.415 min  
 Delta R.T.: -0.006 min  
 Response: 156905553  
 Conc: 637.84 ng/ml



#25 Chlordane-3

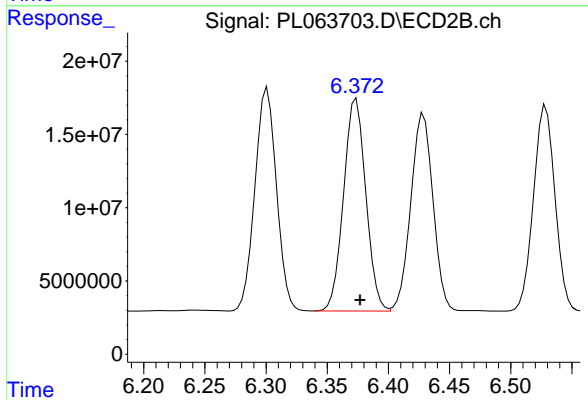
R.T.: 6.301 min  
 Delta R.T.: -0.002 min  
 Response: 186157029  
 Conc: 402.65 ng/ml



#26 Chlordane-4

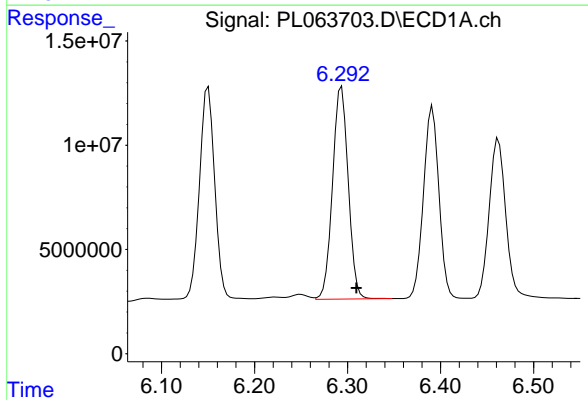
R.T.: 5.472 min  
 Delta R.T.: -0.006 min  
 Response: 152218520  
 Conc: 750.34 ng/ml

Instrument :  
 ECD\_L  
 ClientSampled :



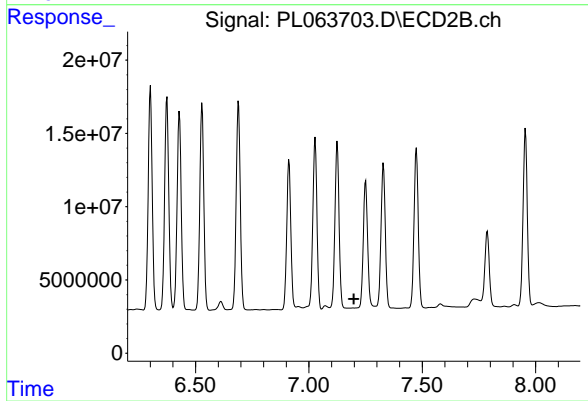
#26 Chlordane-4

R.T.: 6.374 min  
 Delta R.T.: -0.003 min  
 Response: 183200904  
 Conc: 334.17 ng/ml



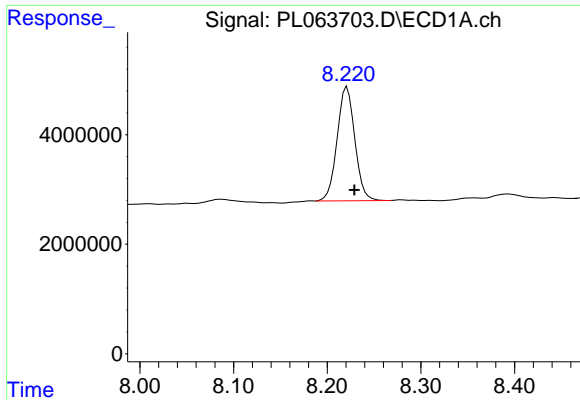
#27 Chlordane-5

R.T.: 6.294 min  
 Delta R.T.: -0.016 min  
 Response: 119334557  
 Conc: 1420.63 ng/ml



#27 Chlordane-5

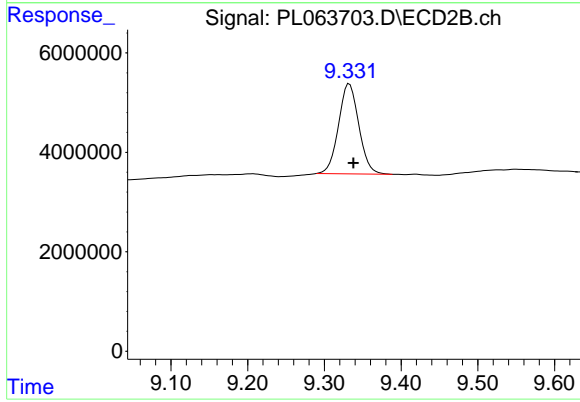
R.T.: 0.000 min  
 Exp R.T.: 7.199 min  
 Response: 0  
 Conc: N.D.



#28 Decachlorobiphenyl

R.T.: 8.221 min  
Delta R.T.: -0.008 min  
Response: 27305553  
Conc: 12.50 ng/ml

Instrument :  
ECD\_L  
ClientSampleId :



#28 Decachlorobiphenyl

R.T.: 9.333 min  
Delta R.T.: -0.005 min  
Response: 33416873  
Conc: 12.47 ng/ml