

Data Path : Z:\pestpcbsrv\HPCHEM1\ECD_L\Data\PL121820\
 Data File : PL063708.D
 Signal(s) : Signal #1: ECD1A.ch Signal #2: ECD2B.ch
 Acq On : 18 Dec 2020 17:03
 Operator : DD\AJ
 Sample : PB133709BS
 Misc :
 ALS Vial : 23 Sample Multiplier: 1

Instrument :
 ECD_L
 ClientSampleId :

Integration File signal 1: autoint1.e
 Integration File signal 2: autoint2.e
 Quant Time: Dec 19 00:23:35 2020
 Quant Method : Z:\pestpcbsrv\HPCHEM1\ECD_L\methods\PL121620.M
 Quant Title : GC Extractables
 QLast Update : Thu Dec 17 09:38:50 2020
 Response via : Initial Calibration
 Integrator: ChemStation

Volume Inj. : 1 µl
 Signal #1 Phase : ZB-MR2 Signal #2 Phase: ZB-MR1
 Signal #1 Info : 30M x 0.32mm x0.2 Signal #2 Info : 30M x 0.32mm x0.5µm

	Compound	RT#1	RT#2	Resp#1	Resp#2	ng/ml	ng/ml

System Monitoring Compounds							
1)	SA Tetrachlo...	3.478	4.147	39134493	64037857	19.240	20.075
28)	SA Decachlor...	8.221	9.332	45817787	54274333	20.971	20.258
Target Compounds							
2)	A alpha-BHC	3.916	4.551	150.3E6	221.7E6	46.180	47.245
3)	MA gamma-BHC...	4.198	4.844	139.6E6	205.1E6	46.332	47.013
4)	MA Heptachlor	4.500	5.358	145.9E6	207.6E6	47.125	49.162
5)	MB Aldrin	4.747	5.670	140.0E6	188.7E6	48.778	49.247
6)	B beta-BHC	4.446	5.019	62286185	98384636	48.375	47.236
7)	B delta-BHC	4.650	5.242	119.6E6	162.8E6	38.978	40.425
8)	Heptachlo...	5.189	6.064	132.9E6	176.6E6	48.350	48.443
9)	A Endosulfan I	5.526	6.427	125.6E6	157.1E6	48.482	48.668
10)	B gamma-Chl...	5.415	6.300	135.6E6	172.8E6	48.810	48.055
11)	B alpha-Chl...	5.473	6.373	133.1E6	167.5E6	48.226	48.089
12)	B 4,4'-DDE	5.639	6.528	120.6E6	158.8E6	49.057	49.176
13)	MA Dieldrin	5.769	6.689	126.5E6	165.8E6	48.139	47.919
14)	MA Endrin	6.023	6.912	104.5E6	111.5E6	44.236	42.081
15)	B Endosulfa...	6.295	7.124	110.8E6	130.8E6	45.613	44.737
16)	A 4,4'-DDD	6.151	7.027	107.6E6	132.9E6	52.317	49.122
17)	MA 4,4'-DDT	6.391	7.328	92887480	114.7E6	47.857	47.202
18)	B Endrin al...	6.463	7.250	91206601	109.9E6	44.592	44.665
19)	B Endosulfa...	6.675	7.474	113.2E6	132.7E6	48.914	46.191
20)	A Methoxychlor	6.938	7.787	54431626	64936954	47.364	46.472
21)	B Endrin ke...	7.162	7.955	141.3E6	147.4E6	52.495	49.177
22)	Mirex	7.351	8.408	101.0E6	105.0E6	51.141	47.881
24)	Chlordane-2	0.000	5.670f	0	188.7E6	N.D.	1514.063 #
25)	Chlordane-3	5.415	6.300	135.6E6	172.8E6	551.321	373.750 #
26)	Chlordane-4	5.473	6.373	133.1E6	167.5E6	656.160	305.485 #
27)	Chlordane-5	6.295	0.000	110.8E6	0	1319.339	N.D. #

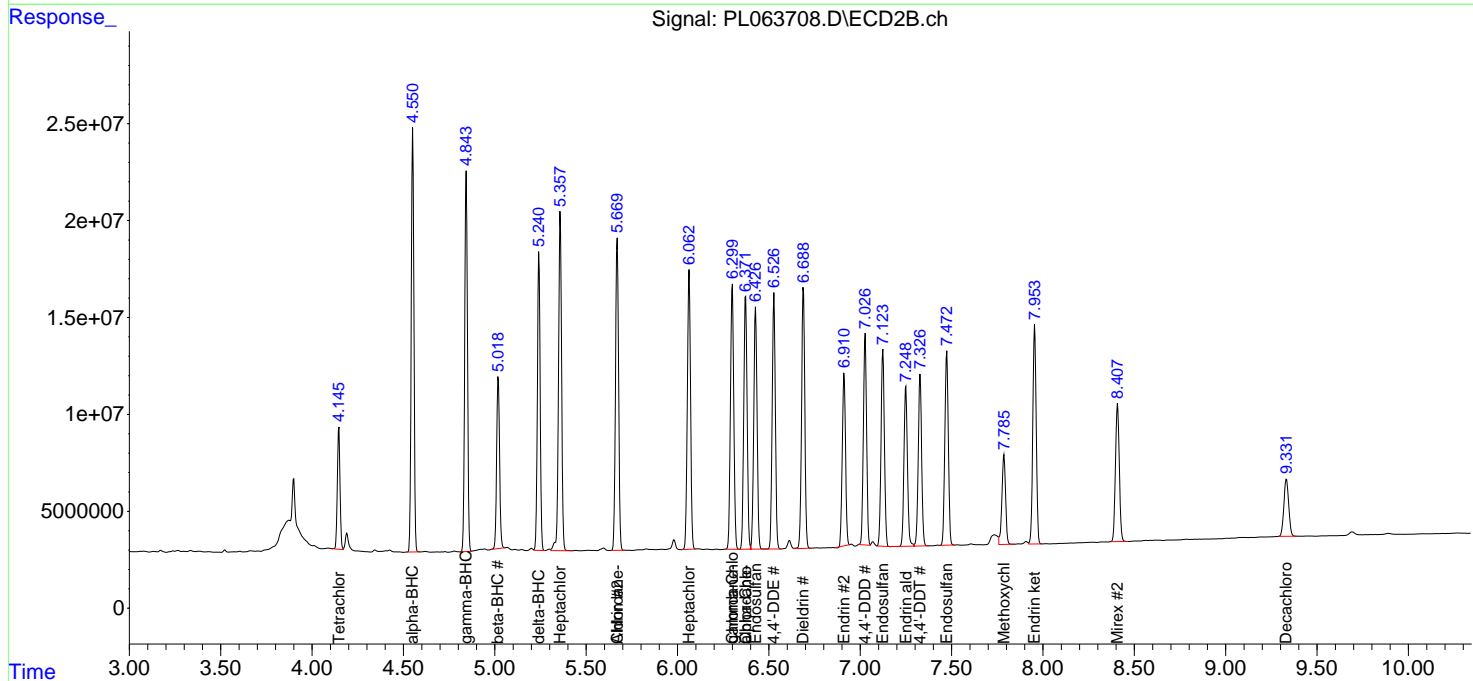
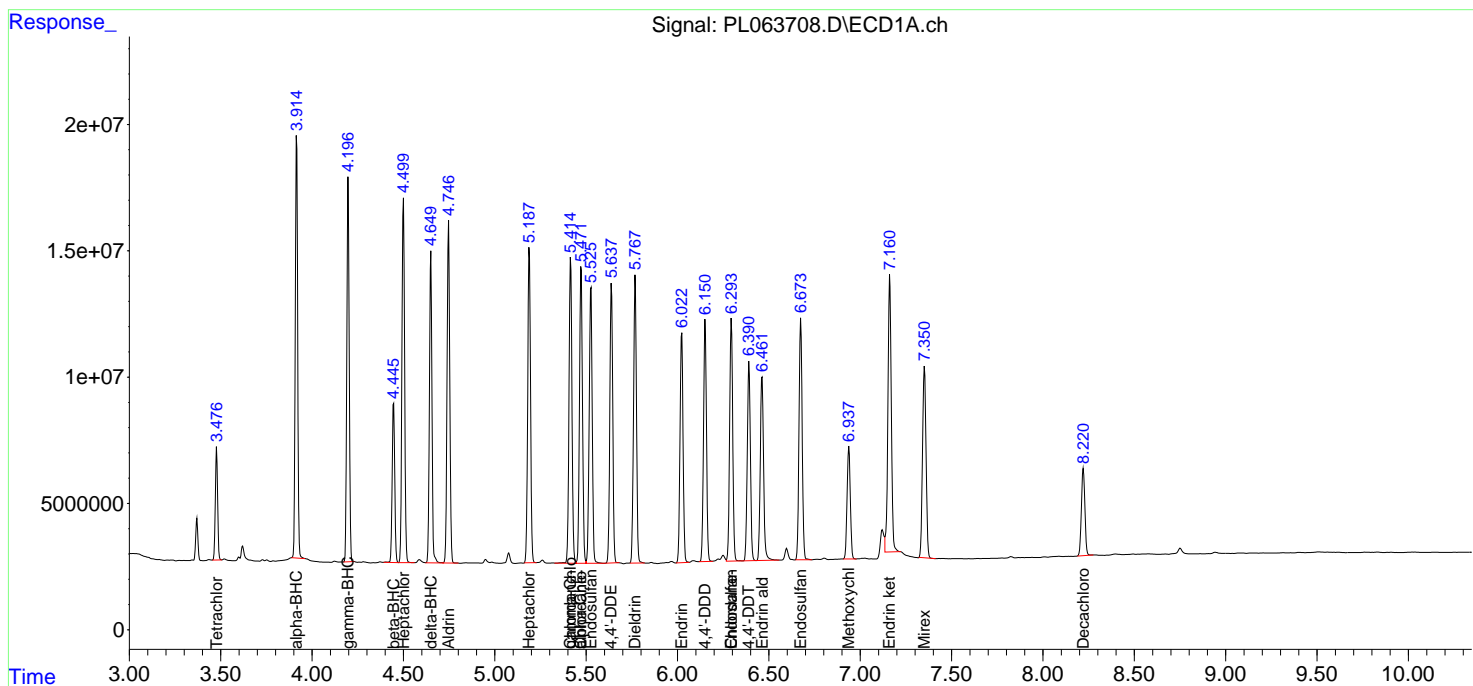
(f)=RT Delta > 1/2 Window (#)=Amounts differ by > 25% (m)=manual int.

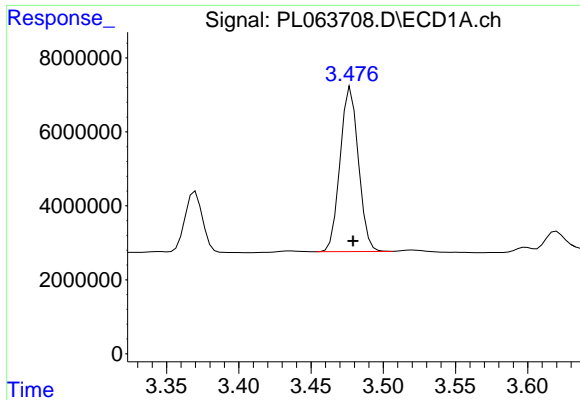
Data Path : Z:\pestpcbsrv\HPCHEM1\ECD_L\Data\PL121820\
 Data File : PL063708.D
 Signal(s) : Signal #1: ECD1A.ch Signal #2: ECD2B.ch
 Acq On : 18 Dec 2020 17:03
 Operator : DD\AJ
 Sample : PB133709BS
 Misc :
 ALS Vial : 23 Sample Multiplier: 1

Instrument :
 ECD_L
 ClientSampled :

Integration File signal 1: autoint1.e
 Integration File signal 2: autoint2.e
 Quant Time: Dec 19 00:23:35 2020
 Quant Method : Z:\pestpcbsrv\HPCHEM1\ECD_L\methods\PL121620.M
 Quant Title : GC Extractables
 QLast Update : Thu Dec 17 09:38:50 2020
 Response via : Initial Calibration
 Integrator: ChemStation

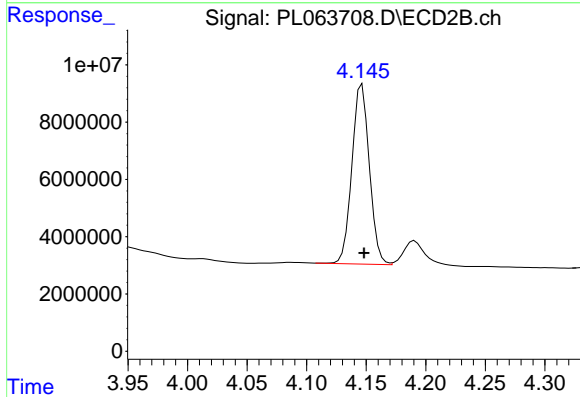
Volume Inj. : 1 µl
 Signal #1 Phase : ZB-MR2 Signal #2 Phase: ZB-MR1
 Signal #1 Info : 30M x 0.32mm x0.2 Signal #2 Info : 30M x 0.32mm x0.5µm



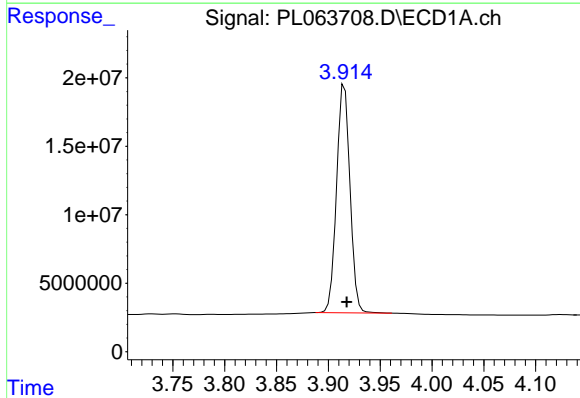


#1 Tetrachloro-m-xylene
 R.T.: 3.478 min
 Delta R.T.: -0.001 min
 Response: 39134493
 Conc: 19.24 ng/ml

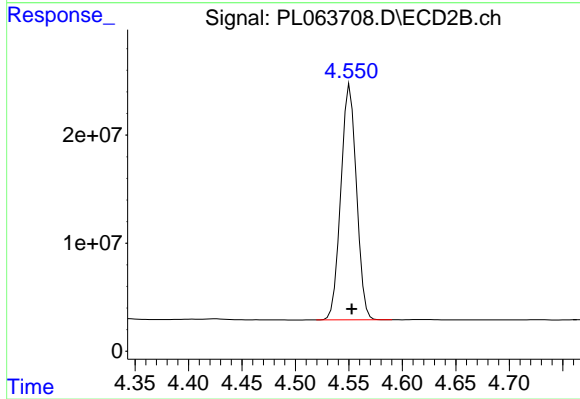
Instrument :
 ECD_L
 ClientSampled :



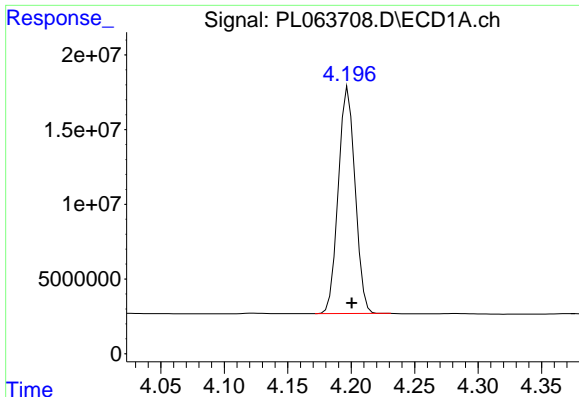
#1 Tetrachloro-m-xylene
 R.T.: 4.147 min
 Delta R.T.: -0.002 min
 Response: 64037857
 Conc: 20.08 ng/ml



#2 alpha-BHC
 R.T.: 3.916 min
 Delta R.T.: -0.002 min
 Response: 150300526
 Conc: 46.18 ng/ml



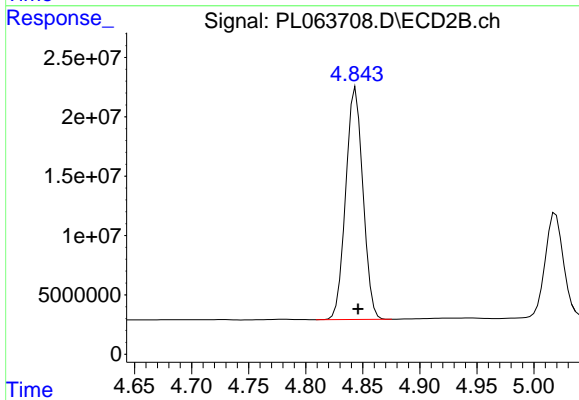
#2 alpha-BHC
 R.T.: 4.551 min
 Delta R.T.: -0.002 min
 Response: 221650538
 Conc: 47.25 ng/ml



#3 gamma-BHC (Lindane)

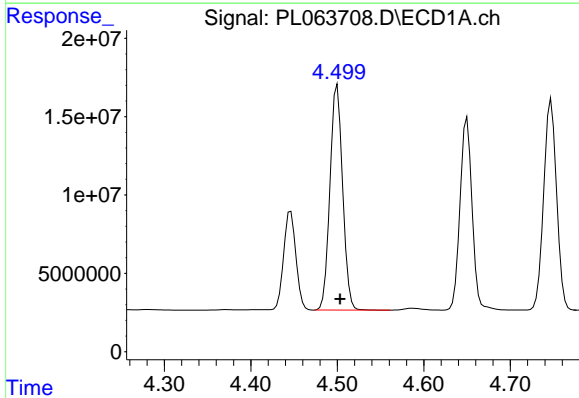
R.T.: 4.198 min
 Delta R.T.: -0.003 min
 Response: 139585729
 Conc: 46.33 ng/ml

Instrument :
 ECD_L
 ClientSampled :



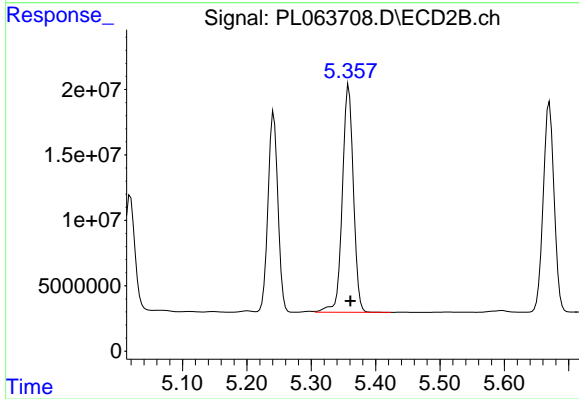
#3 gamma-BHC (Lindane)

R.T.: 4.844 min
 Delta R.T.: -0.002 min
 Response: 205067849
 Conc: 47.01 ng/ml



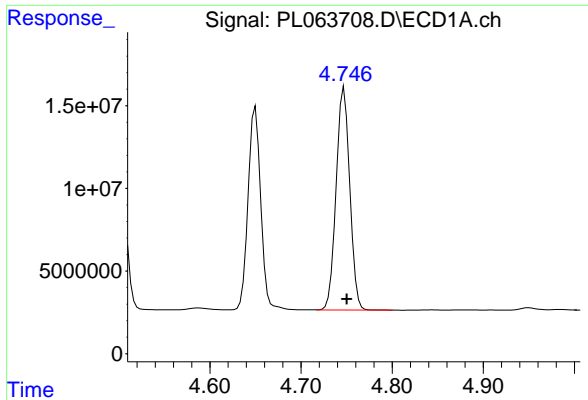
#4 Heptachlor

R.T.: 4.500 min
 Delta R.T.: -0.003 min
 Response: 145902401
 Conc: 47.13 ng/ml



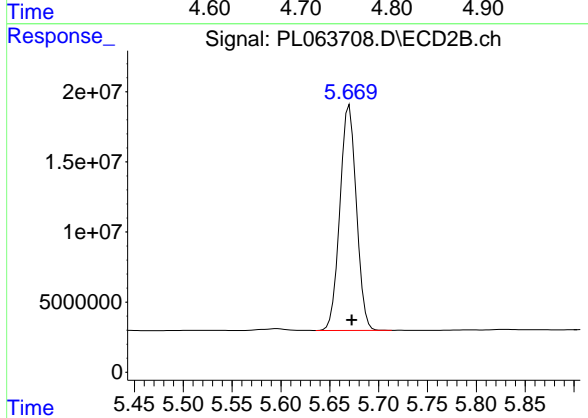
#4 Heptachlor

R.T.: 5.358 min
 Delta R.T.: -0.002 min
 Response: 207608727
 Conc: 49.16 ng/ml

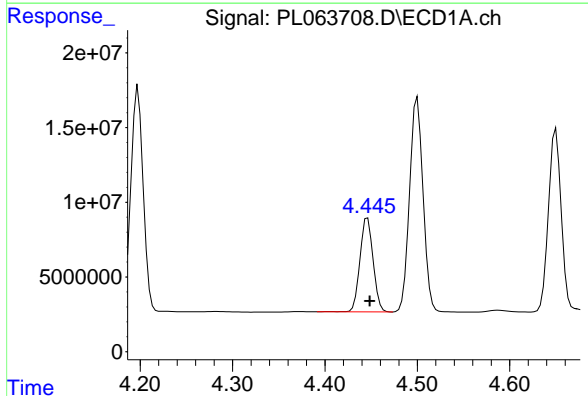


#5 Aldrin
 R.T.: 4.747 min
 Delta R.T.: -0.003 min
 Response: 139962228
 Conc: 48.78 ng/ml

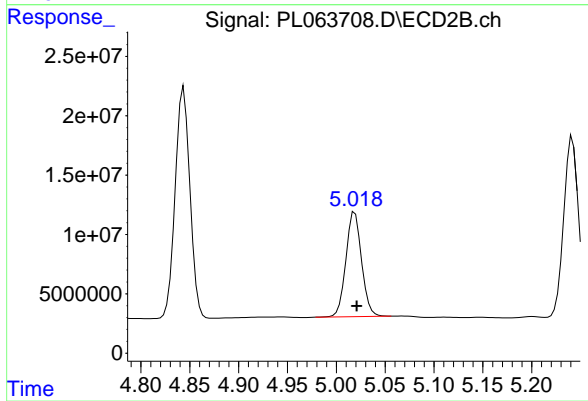
Instrument :
 ECD_L
 ClientSampled :



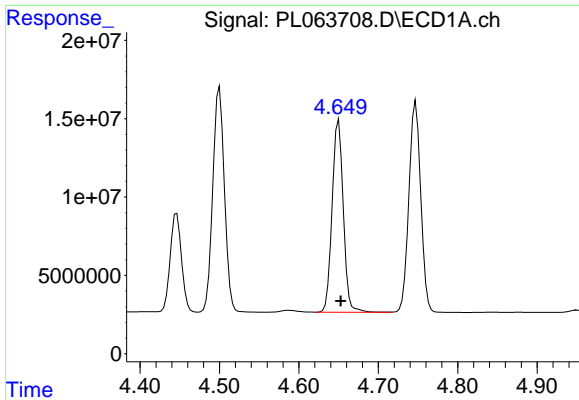
#5 Aldrin
 R.T.: 5.670 min
 Delta R.T.: -0.002 min
 Response: 188702377
 Conc: 49.25 ng/ml



#6 beta-BHC
 R.T.: 4.446 min
 Delta R.T.: -0.002 min
 Response: 62286185
 Conc: 48.37 ng/ml

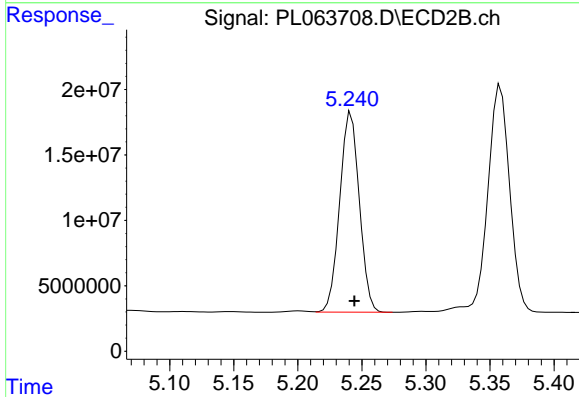


#6 beta-BHC
 R.T.: 5.019 min
 Delta R.T.: -0.002 min
 Response: 98384636
 Conc: 47.24 ng/ml

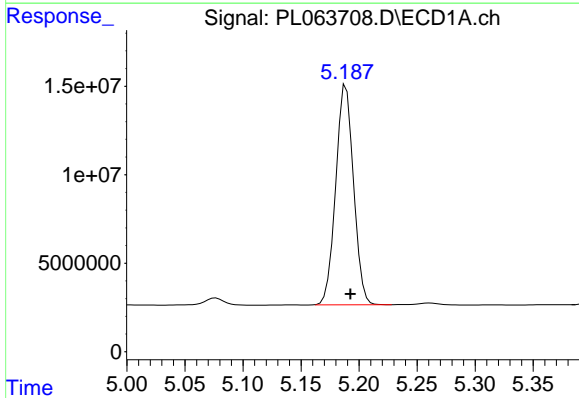


#7 delta-BHC
 R.T.: 4.650 min
 Delta R.T.: -0.003 min
 Response: 119646656
 Conc: 38.98 ng/ml

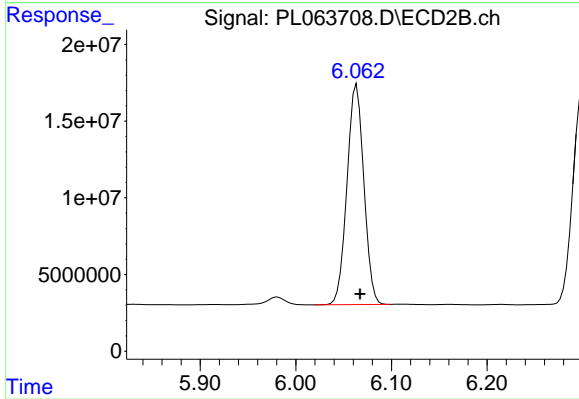
Instrument :
 ECD_L
 ClientSampleId :



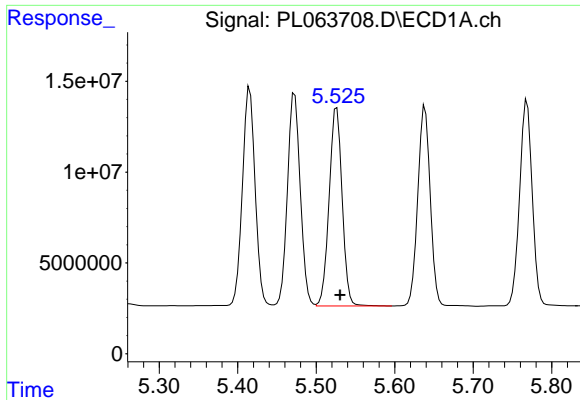
#7 delta-BHC
 R.T.: 5.242 min
 Delta R.T.: -0.002 min
 Response: 162787137
 Conc: 40.42 ng/ml



#8 Heptachlor epoxide
 R.T.: 5.189 min
 Delta R.T.: -0.004 min
 Response: 132866086
 Conc: 48.35 ng/ml

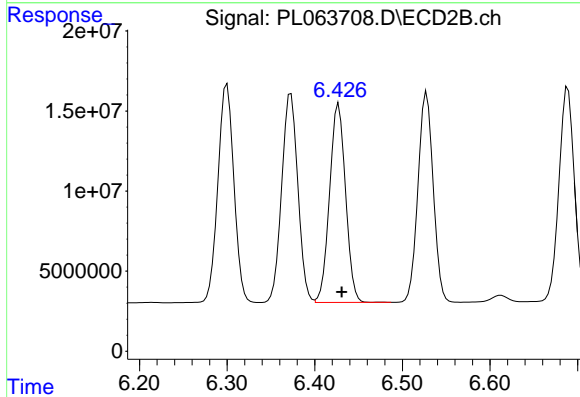


#8 Heptachlor epoxide
 R.T.: 6.064 min
 Delta R.T.: -0.004 min
 Response: 176569499
 Conc: 48.44 ng/ml

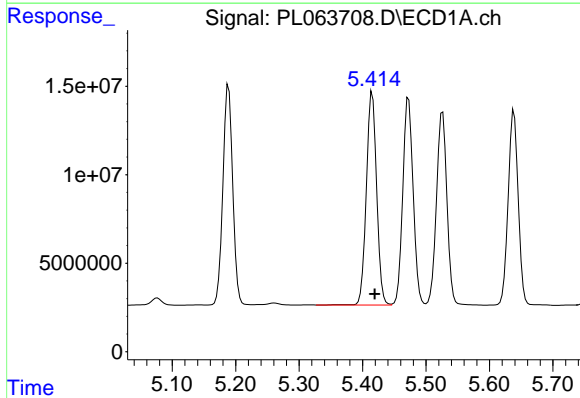


#9 Endosulfan I
 R.T.: 5.526 min
 Delta R.T.: -0.004 min
 Response: 125568837
 Conc: 48.48 ng/ml

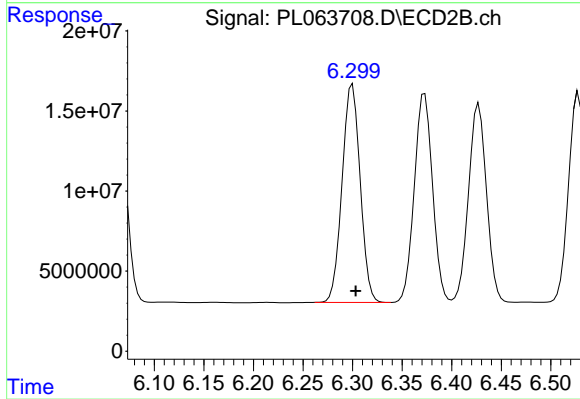
Instrument :
 ECD_L
 ClientSampleId :



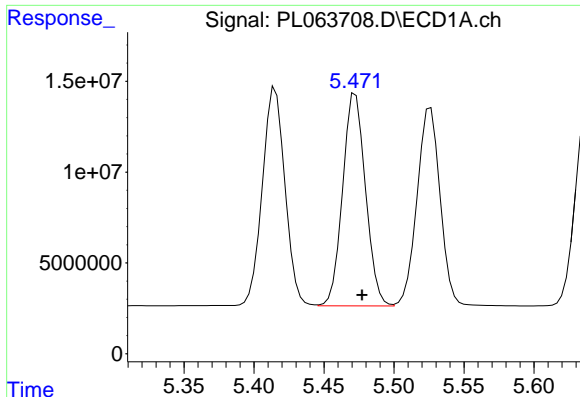
#9 Endosulfan I
 R.T.: 6.427 min
 Delta R.T.: -0.004 min
 Response: 157100387
 Conc: 48.67 ng/ml



#10 gamma-Chlordane
 R.T.: 5.415 min
 Delta R.T.: -0.004 min
 Response: 135622954
 Conc: 48.81 ng/ml



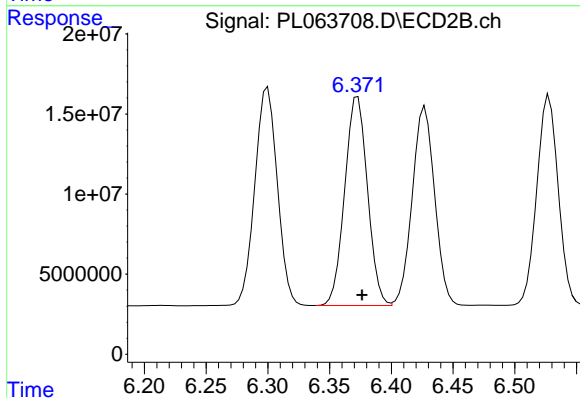
#10 gamma-Chlordane
 R.T.: 6.300 min
 Delta R.T.: -0.003 min
 Response: 172796631
 Conc: 48.05 ng/ml



#11 alpha-Chlordane

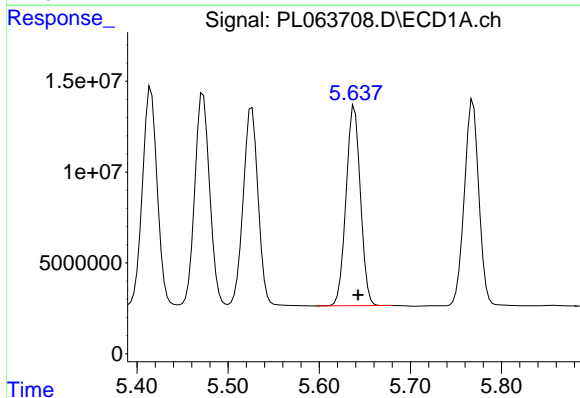
R.T.: 5.473 min
 Delta R.T.: -0.005 min
 Response: 133113441
 Conc: 48.23 ng/ml

Instrument :
 ECD_L
 ClientSampled :



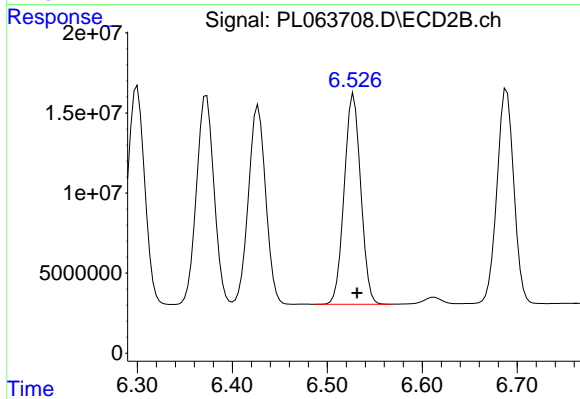
#11 alpha-Chlordane

R.T.: 6.373 min
 Delta R.T.: -0.003 min
 Response: 167474983
 Conc: 48.09 ng/ml



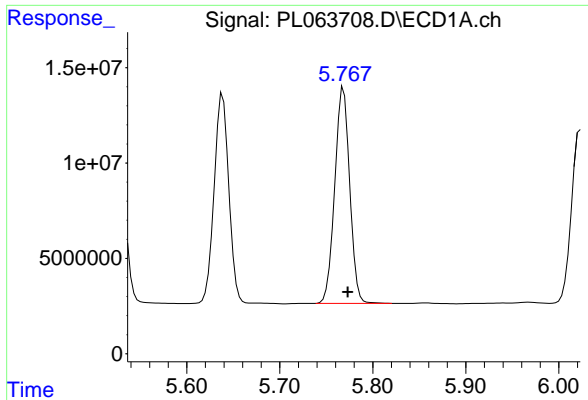
#12 4,4'-DDE

R.T.: 5.639 min
 Delta R.T.: -0.004 min
 Response: 120618172
 Conc: 49.06 ng/ml



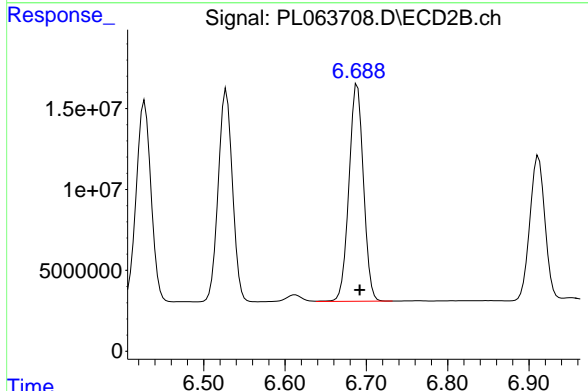
#12 4,4'-DDE

R.T.: 6.528 min
 Delta R.T.: -0.003 min
 Response: 158763102
 Conc: 49.18 ng/ml

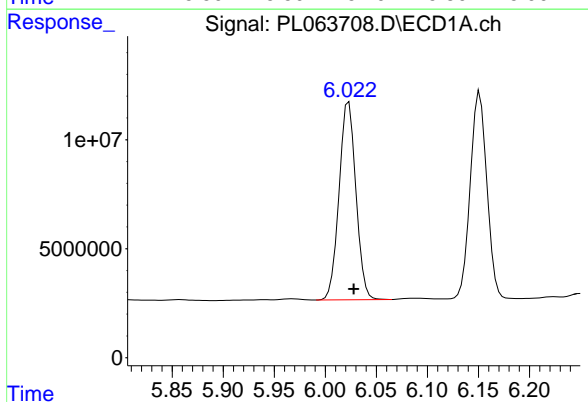


#13 Dieldrin
 R.T.: 5.769 min
 Delta R.T.: -0.005 min
 Response: 126485970
 Conc: 48.14 ng/ml

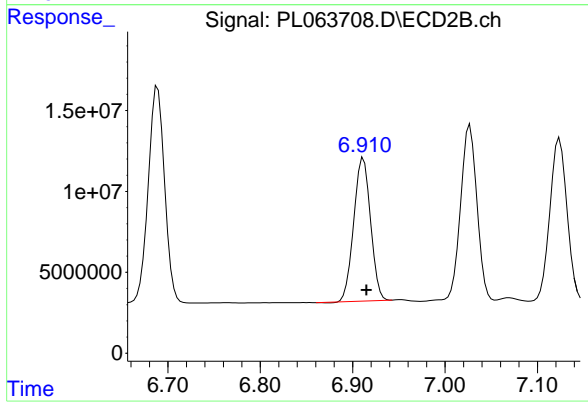
Instrument :
 ECD_L
 ClientSampled :



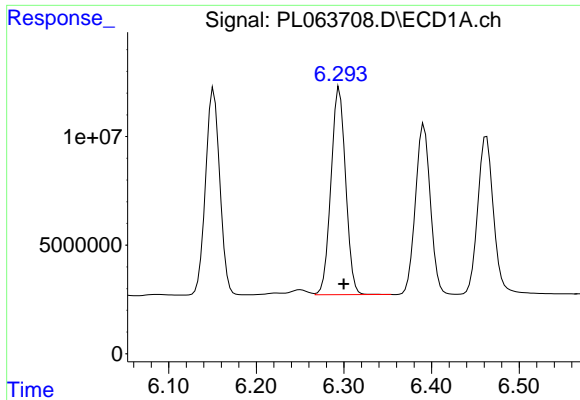
#13 Dieldrin
 R.T.: 6.689 min
 Delta R.T.: -0.003 min
 Response: 165801787
 Conc: 47.92 ng/ml



#14 Endrin
 R.T.: 6.023 min
 Delta R.T.: -0.005 min
 Response: 104458498
 Conc: 44.24 ng/ml

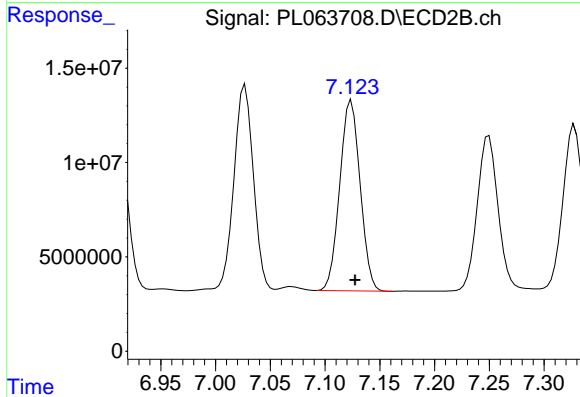


#14 Endrin
 R.T.: 6.912 min
 Delta R.T.: -0.003 min
 Response: 111545174
 Conc: 42.08 ng/ml

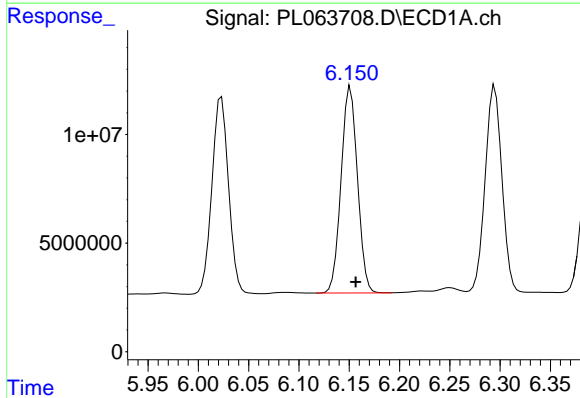


#15 Endosulfan II
 R.T.: 6.295 min
 Delta R.T.: -0.005 min
 Response: 110826177
 Conc: 45.61 ng/ml

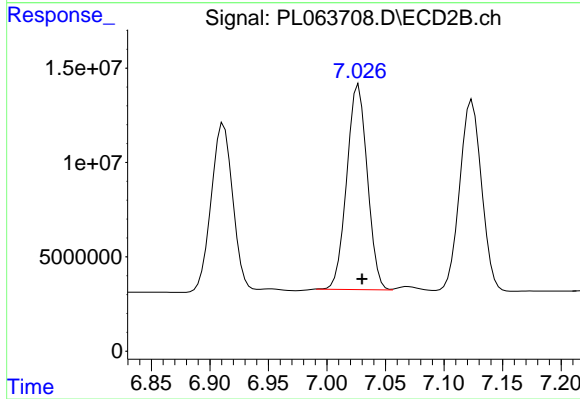
Instrument :
 ECD_L
 ClientSampleId :



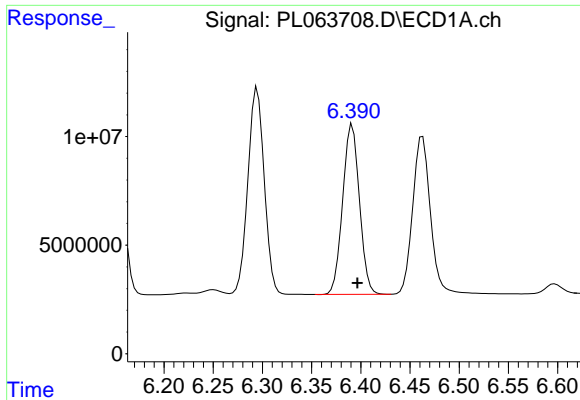
#15 Endosulfan II
 R.T.: 7.124 min
 Delta R.T.: -0.003 min
 Response: 130751190
 Conc: 44.74 ng/ml



#16 4,4'-DDD
 R.T.: 6.151 min
 Delta R.T.: -0.005 min
 Response: 107561332
 Conc: 52.32 ng/ml

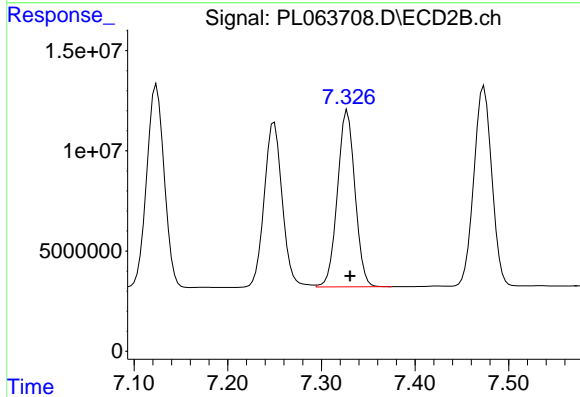


#16 4,4'-DDD
 R.T.: 7.027 min
 Delta R.T.: -0.003 min
 Response: 132872197
 Conc: 49.12 ng/ml

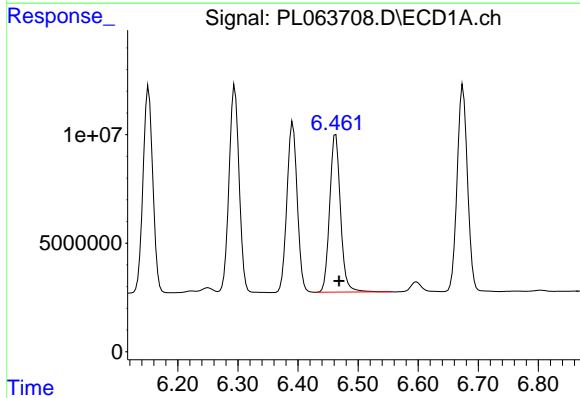


#17 4,4'-DDT
 R.T.: 6.391 min
 Delta R.T.: -0.005 min
 Response: 92887480
 Conc: 47.86 ng/ml

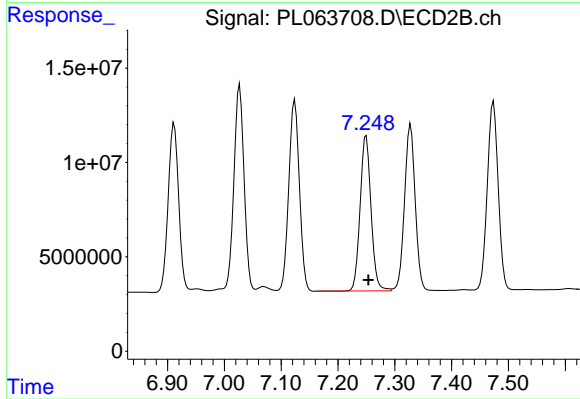
Instrument :
 ECD_L
 ClientSampled :



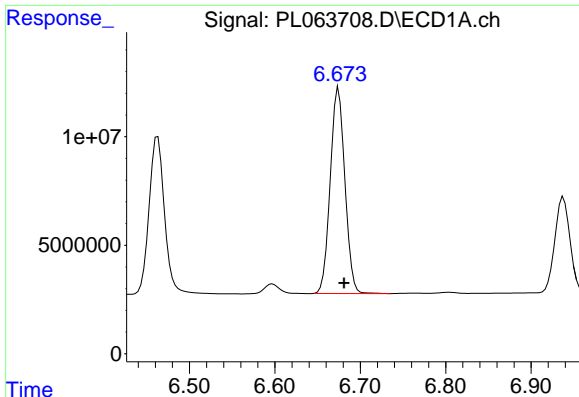
#17 4,4'-DDT
 R.T.: 7.328 min
 Delta R.T.: -0.003 min
 Response: 114733910
 Conc: 47.20 ng/ml



#18 Endrin aldehyde
 R.T.: 6.463 min
 Delta R.T.: -0.006 min
 Response: 91206601
 Conc: 44.59 ng/ml



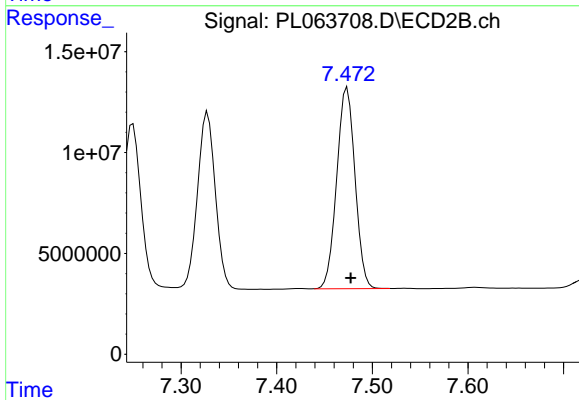
#18 Endrin aldehyde
 R.T.: 7.250 min
 Delta R.T.: -0.004 min
 Response: 109942228
 Conc: 44.66 ng/ml



#19 Endosulfan Sulfate

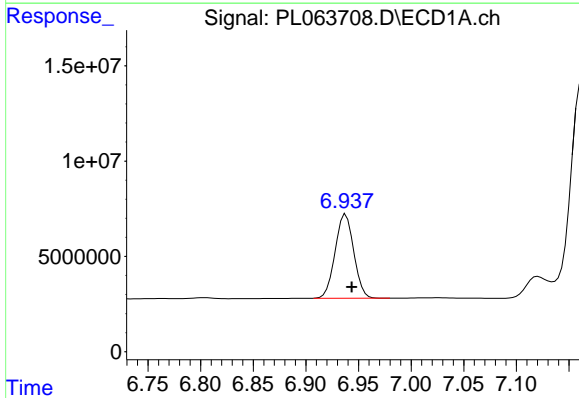
R.T.: 6.675 min
 Delta R.T.: -0.006 min
 Response: 113221619
 Conc: 48.91 ng/ml

Instrument :
 ECD_L
 ClientSampleId :



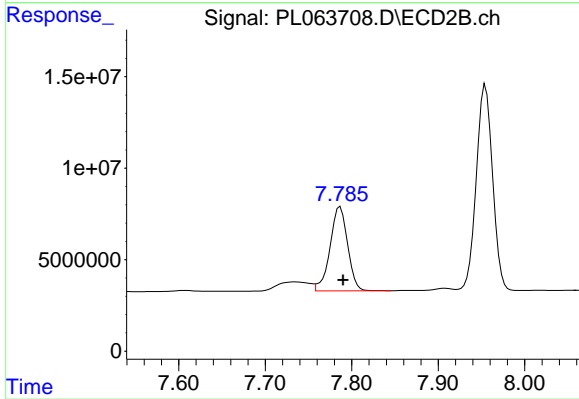
#19 Endosulfan Sulfate

R.T.: 7.474 min
 Delta R.T.: -0.004 min
 Response: 132709940
 Conc: 46.19 ng/ml



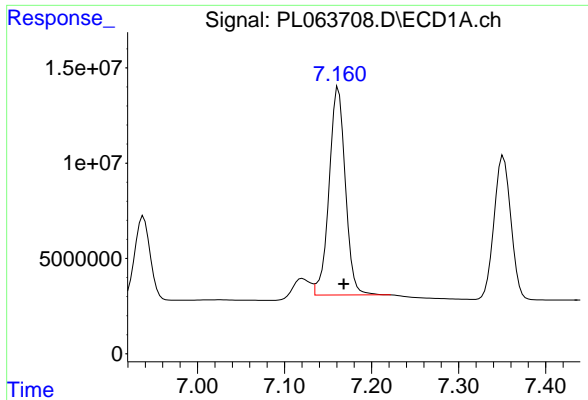
#20 Methoxychlor

R.T.: 6.938 min
 Delta R.T.: -0.006 min
 Response: 54431626
 Conc: 47.36 ng/ml



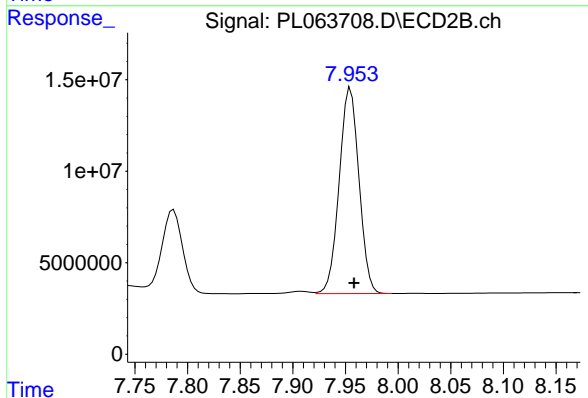
#20 Methoxychlor

R.T.: 7.787 min
 Delta R.T.: -0.003 min
 Response: 64936954
 Conc: 46.47 ng/ml

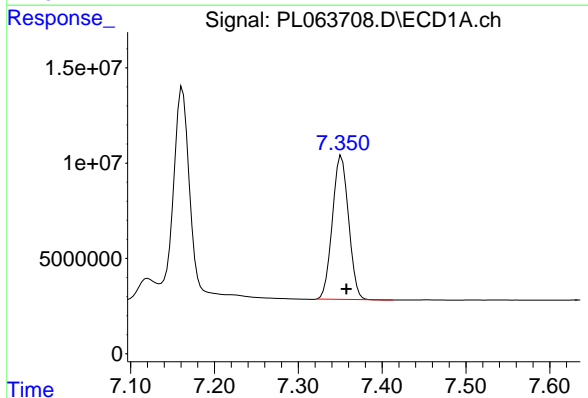


#21 Endrin ketone
 R.T.: 7.162 min
 Delta R.T.: -0.006 min
 Response: 141340477
 Conc: 52.49 ng/ml

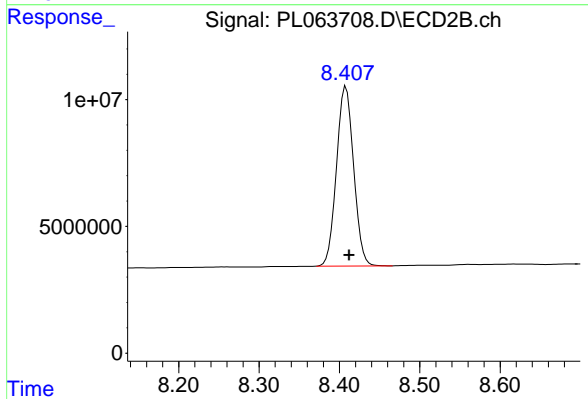
Instrument :
 ECD_L
 ClientSampleId :



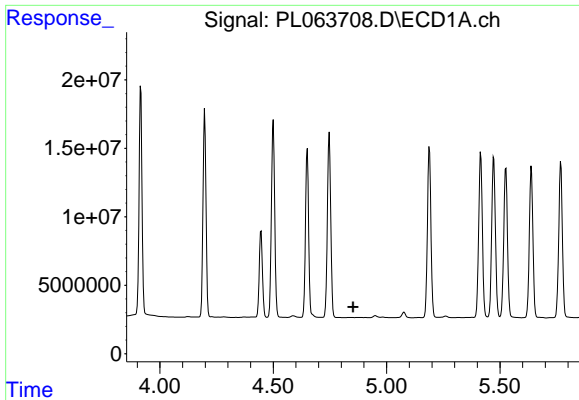
#21 Endrin ketone
 R.T.: 7.955 min
 Delta R.T.: -0.004 min
 Response: 147401869
 Conc: 49.18 ng/ml



#22 Mirex
 R.T.: 7.351 min
 Delta R.T.: -0.006 min
 Response: 100982153
 Conc: 51.14 ng/ml



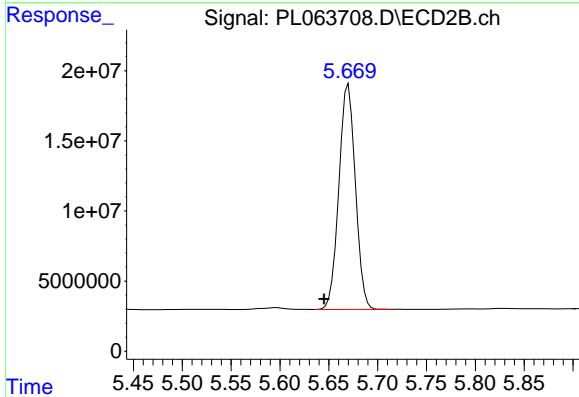
#22 Mirex
 R.T.: 8.408 min
 Delta R.T.: -0.004 min
 Response: 104959689
 Conc: 47.88 ng/ml



#24 Chlordane-2

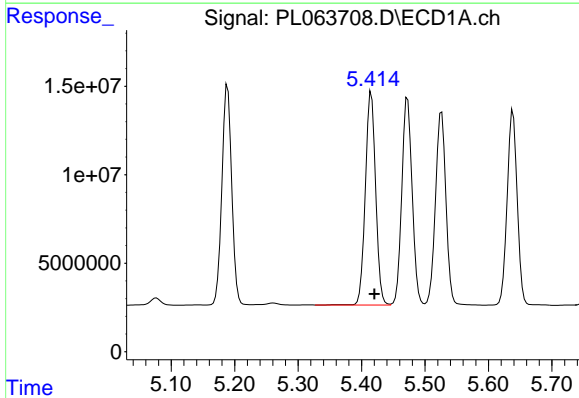
R.T.: 0.000 min
 Exp R.T.: 4.852 min
 Response: 0
 Conc: N.D.

Instrument :
 ECD_L
 ClientSampled :



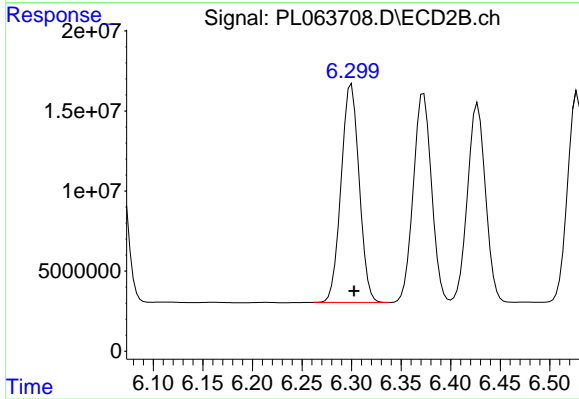
#24 Chlordane-2

R.T.: 5.670 min
 Delta R.T.: 0.025 min
 Response: 188702377
 Conc: 1514.06 ng/ml



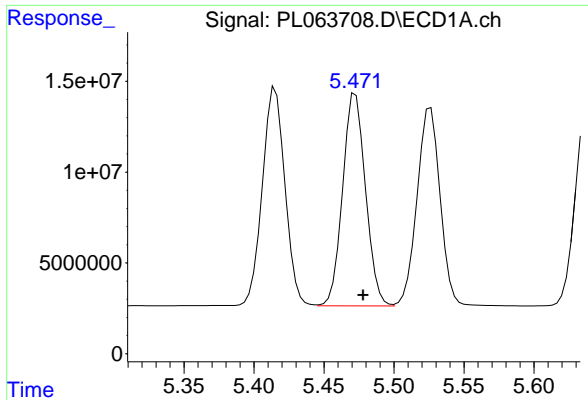
#25 Chlordane-3

R.T.: 5.415 min
 Delta R.T.: -0.005 min
 Response: 135622954
 Conc: 551.32 ng/ml



#25 Chlordane-3

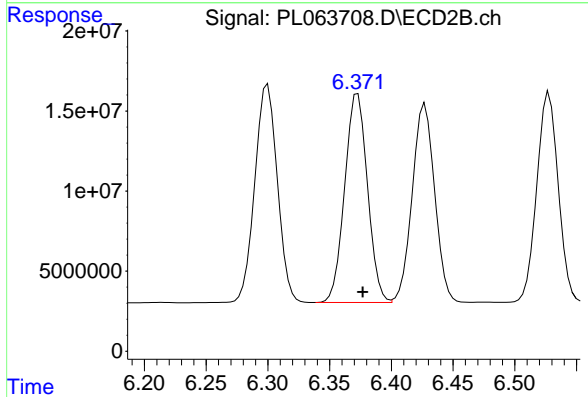
R.T.: 6.300 min
 Delta R.T.: -0.003 min
 Response: 172796631
 Conc: 373.75 ng/ml



#26 Chlordane-4

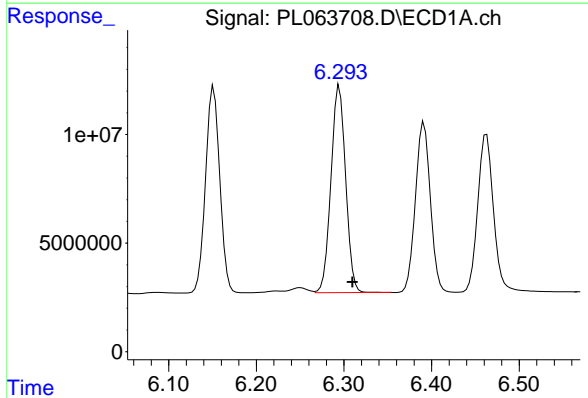
R.T.: 5.473 min
 Delta R.T.: -0.005 min
 Response: 133113441
 Conc: 656.16 ng/ml

Instrument :
 ECD_L
 ClientSampleId :



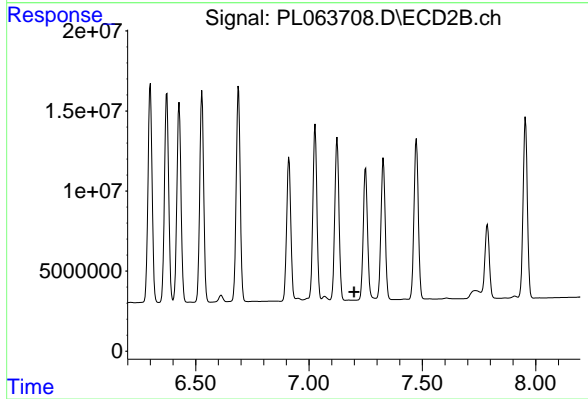
#26 Chlordane-4

R.T.: 6.373 min
 Delta R.T.: -0.004 min
 Response: 167474983
 Conc: 305.48 ng/ml



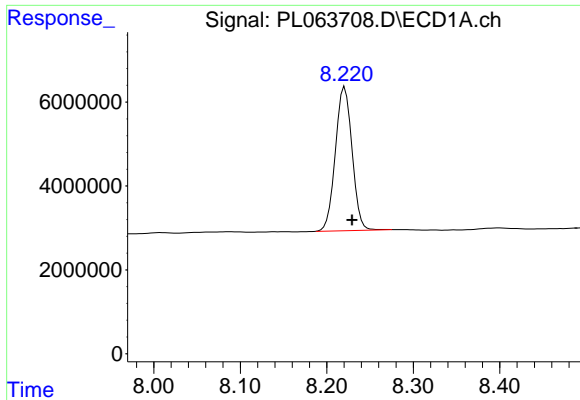
#27 Chlordane-5

R.T.: 6.295 min
 Delta R.T.: -0.015 min
 Response: 110826177
 Conc: 1319.34 ng/ml



#27 Chlordane-5

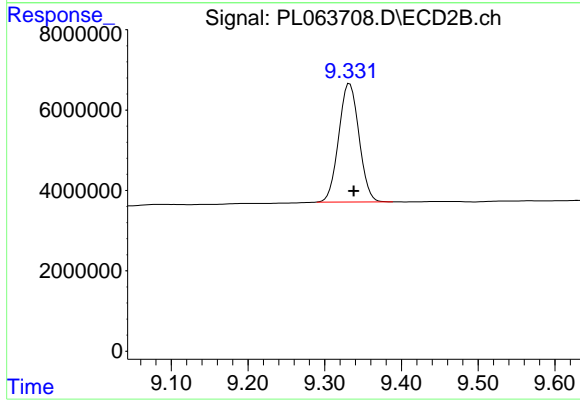
R.T.: 0.000 min
 Exp R.T.: 7.199 min
 Response: 0
 Conc: N.D.



#28 Decachlorobiphenyl

R.T.: 8.221 min
Delta R.T.: -0.008 min
Response: 45817787
Conc: 20.97 ng/ml

Instrument :
ECD_L
ClientSampleId :



#28 Decachlorobiphenyl

R.T.: 9.332 min
Delta R.T.: -0.005 min
Response: 54274333
Conc: 20.26 ng/ml