

Data Path : Z:\pestpcbsrv\HPCHEM1\ECD\_P\Data\PP121820\  
 Data File : PP032244.D  
 Signal(s) : Signal #1: ECD1A.CH Signal #2: ECD2B.CH  
 Acq On : 18 Dec 2020 17:05  
 Operator : DD\AJ  
 Sample : L5122-18  
 Misc :  
 ALS Vial : 19 Sample Multiplier: 1

Instrument :  
 ECD\_L  
 ClientSampled :

Integration File signal 1: autoint1.e  
 Integration File signal 2: autoint2.e  
 Quant Time: Dec 19 03:16:18 2020  
 Quant Method : Z:\pestpcbsrv\HPCHEM1\ECD\_P\methods\PP121120.M  
 Quant Title : GC EXTRACTABLES  
 QLast Update : Sat Dec 12 05:15:55 2020  
 Response via : Initial Calibration  
 Integrator: ChemStation 6890 Scale Mode: Small noise peaks clipped

Volume Inj. : 2 µl  
 Signal #1 Phase : ZB-MR1 Signal #2 Phase: ZB-MR2  
 Signal #1 Info : 30Mx0.32mmx 0.50µ Signal #2 Info : 30M x 0.32mm x 0.25µm

Compound	RT#1	RT#2	Resp#1	Resp#2	ng/ml	ng/ml
System Monitoring Compounds						
1) SA Tetrachlo...	4.775	4.047	1131440	1058485	21.964	22.380
2) SA Decachlor...	10.633	9.333	1184283	1301563	37.765	38.811
Target Compounds						
3) L1 AR-1016-1	6.108f	0.000	38354	0	26.296	N.D. #
4) L1 AR-1016-2	6.108	0.000	38354	0	17.075	N.D. #
6) L1 AR-1016-4	0.000	5.560	0	25474	N.D.	30.022 #
7) L1 AR-1016-5	0.000	5.800	0	100040	N.D.	92.066 #
8) L2 AR-1221-1	5.015	0.000	1122405	0	2156.655	N.D. #
9) L2 AR-1221-2	0.000	4.382f	0	821393	N.D.	2282.519 #
10) L2 AR-1221-3	0.000	4.508	0	18110	N.D.	16.193 #
11) L3 AR-1232-1	0.000	4.508	0	18110	N.D.	19.547 #
13) L3 AR-1232-3	6.108	0.000	38354	0	39.891	N.D. #
14) L3 AR-1232-4	0.000	5.588f	0	68770	N.D.	175.287 #
15) L3 AR-1232-5	0.000	5.800	0	100040	N.D.	231.290 #
16) L4 AR-1242-1	6.108f	0.000	38354	0	33.474	N.D. #
17) L4 AR-1242-2	6.108	0.000	38354	0	21.775	N.D. #
19) L4 AR-1242-4	0.000	5.588f	0	68770	N.D.	84.785 #
20) L4 AR-1242-5	7.058	6.166	116193	331707	133.958	372.985 #
21) L5 AR-1248-1	6.108f	0.000	38354	0	44.066	N.D. #
22) L5 AR-1248-2	0.000	5.560	0	25474	N.D.	22.049 #
23) L5 AR-1248-3	0.000	5.588f	0	68770	N.D.	56.299 #
24) L5 AR-1248-4	7.010	5.800	178320	100040	124.648	68.223 #
25) L5 AR-1248-5	7.058	6.210	116193	86112	78.303	68.636
26) L6 AR-1254-1	6.980	6.166	308022	331707	198.310	160.475
27) L6 AR-1254-2	7.211	6.325	685596	479904	298.048	267.695
28) L6 AR-1254-3	7.602	6.746	2051135	745910	842.379	260.990 #
29) L6 AR-1254-4	7.884	6.984	675093	427480	438.597	309.332 #
30) L6 AR-1254-5	8.335f	7.412	109.9E6	108.0E6	64124.554	45391.059 #
31) L7 AR-1260-1	7.758	6.880	1052910	849388	607.532	448.025 #
32) L7 AR-1260-2	8.018	7.077	12886854	1409395	6272.215	647.886 #
33) L7 AR-1260-3	8.390	7.232	2425526	2376768	1390.020	1118.652
34) L7 AR-1260-4	8.613	7.712	1147674	911302	636.887	512.946
35) L7 AR-1260-5	8.931	7.960	2944288	2051241	819.016	536.204 #
36) L8 AR-1262-1	8.390	7.449	2425526	3061058	898.905	1139.011 #
37) L8 AR-1262-2	8.931	7.960	2944288	2051241	726.049	491.941 #
38) L8 AR-1262-3	9.225	8.246	1442038	692186	503.243	382.062
39) L8 AR-1262-4	9.331	8.310	2401915	1775285	985.284	527.677 #
40) L8 AR-1262-5	9.936	8.806	680509	717905	501.998	547.968
41) L9 AR-1268-1	9.225	8.246	1442038	692186	277.515	137.348 #
42) L9 AR-1268-2	9.331	8.310	2401915	1775285	493.457	347.219 #
43) L9 AR-1268-3	9.527	8.515	1157857	850777	267.934	192.963 #
44) L9 AR-1268-4	9.936	8.806	680509	717905	489.825	491.240

Data Path : Z:\pestpcbsrv\HPCHEM1\ECD\_P\Data\PP121820\  
 Data File : PP032244.D  
 Signal(s) : Signal #1: ECD1A.CH Signal #2: ECD2B.CH  
 Acq On : 18 Dec 2020 17:05  
 Operator : DD\AJ  
 Sample : L5122-18  
 Misc :  
 ALS Vial : 19 Sample Multiplier: 1

Instrument :  
 ECD\_L  
 ClientSampleId :

Integration File signal 1: autoint1.e  
 Integration File signal 2: autoint2.e  
 Quant Time: Dec 19 03:16:18 2020  
 Quant Method : Z:\pestpcbsrv\HPCHEM1\ECD\_P\methods\PP121120.M  
 Quant Title : GC EXTRACTABLES  
 QLast Update : Sat Dec 12 05:15:55 2020  
 Response via : Initial Calibration  
 Integrator: ChemStation 6890 Scale Mode: Small noise peaks clipped

Volume Inj. : 2 µl  
 Signal #1 Phase : ZB-MR1 Signal #2 Phase: ZB-MR2  
 Signal #1 Info : 30Mx0.32mmx 0.50µ Signal #2 Info : 30M x 0.32mm x 0.25µm

	Compound	RT#1	RT#2	Resp#1	Resp#2	ng/ml	ng/ml
45)	L9 AR-1268-5	10.322	9.090	2198677	2292856	182.543	181.315

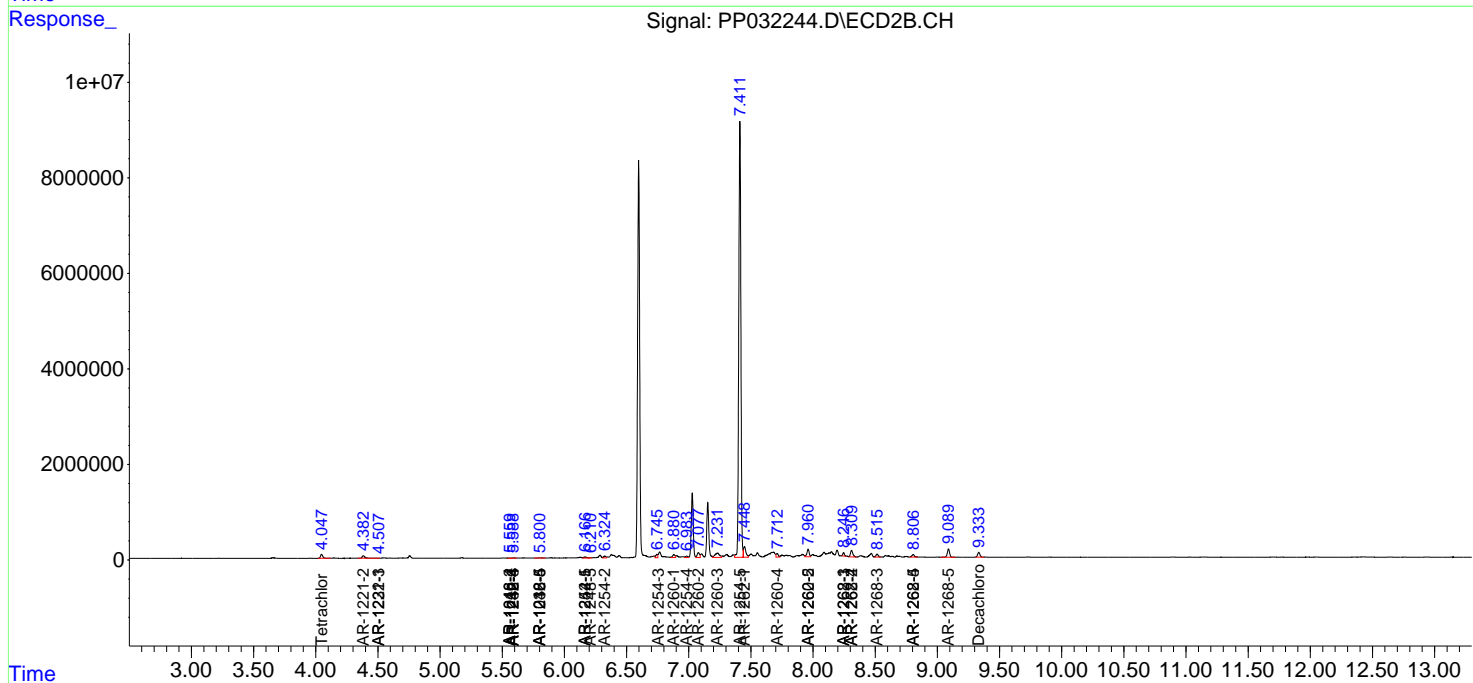
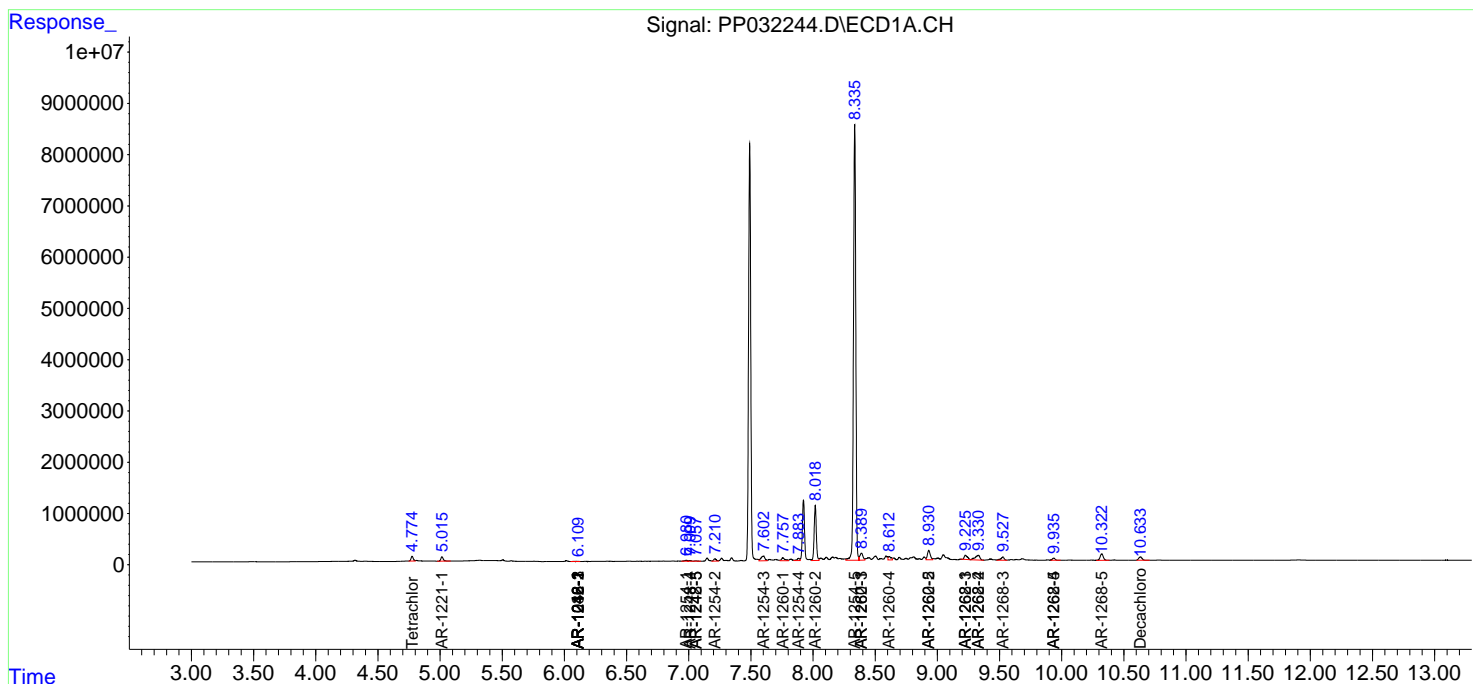
(f)=RT Delta > 1/2 Window (#)=Amounts differ by > 25% (m)=manual int.

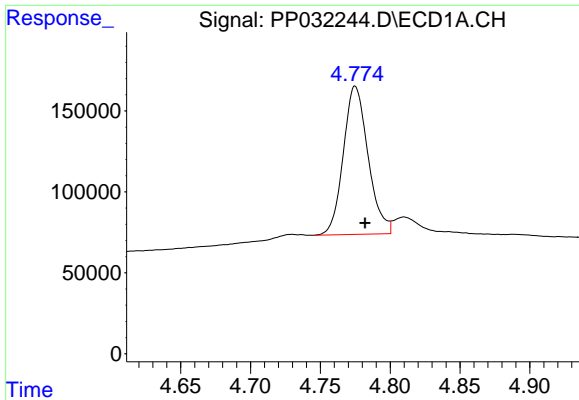
Data Path : Z:\pestpcbsrv\HPCHEM1\ECD\_P\Data\PP121820\  
 Data File : PP032244.D  
 Signal(s) : Signal #1: ECD1A.CH Signal #2: ECD2B.CH  
 Acq On : 18 Dec 2020 17:05  
 Operator : DD\AJ  
 Sample : L5122-18  
 Misc :  
 ALS Vial : 19 Sample Multiplier: 1

Instrument :  
 ECD\_L  
 ClientSampled :

Integration File signal 1: autoint1.e  
 Integration File signal 2: autoint2.e  
 Quant Time: Dec 19 03:16:18 2020  
 Quant Method : Z:\pestpcbsrv\HPCHEM1\ECD\_P\methods\PP121120.M  
 Quant Title : GC EXTRACTABLES  
 QLast Update : Sat Dec 12 05:15:55 2020  
 Response via : Initial Calibration  
 Integrator: ChemStation 6890 Scale Mode: Small noise peaks clipped

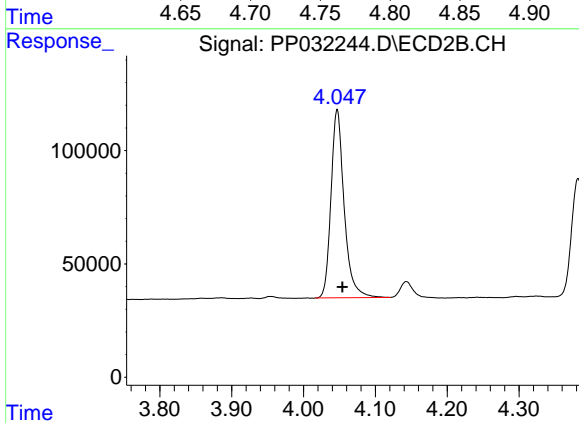
Volume Inj. : 2 µl  
 Signal #1 Phase : ZB-MR1 Signal #2 Phase: ZB-MR2  
 Signal #1 Info : 30Mx0.32mmx 0.50µ Signal #2 Info : 30M x 0.32mm x 0.25µm



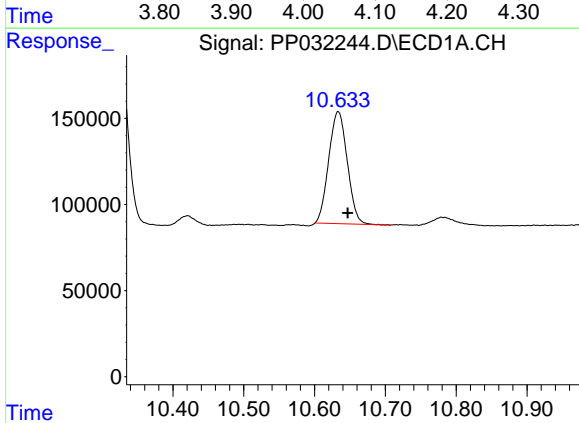


#1 Tetrachloro-m-xylene  
 R.T.: 4.775 min  
 Delta R.T.: -0.007 min  
 Response: 1131440  
 Conc: 21.96 ng/ml

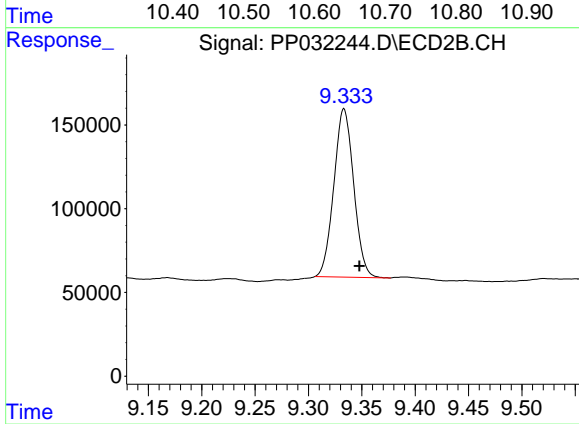
Instrument :  
 ECD\_L  
 ClientSampled :



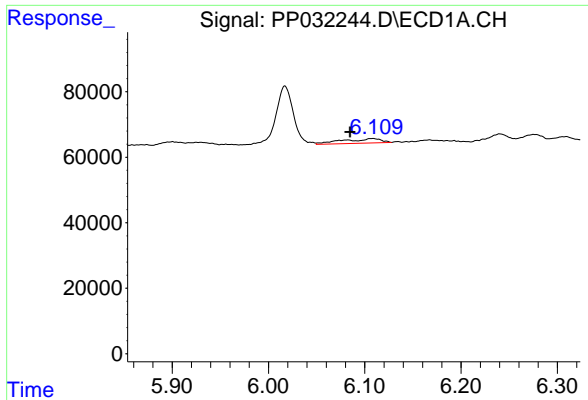
#1 Tetrachloro-m-xylene  
 R.T.: 4.047 min  
 Delta R.T.: -0.007 min  
 Response: 1058485  
 Conc: 22.38 ng/ml



#2 Decachlorobiphenyl  
 R.T.: 10.633 min  
 Delta R.T.: -0.013 min  
 Response: 1184283  
 Conc: 37.76 ng/ml

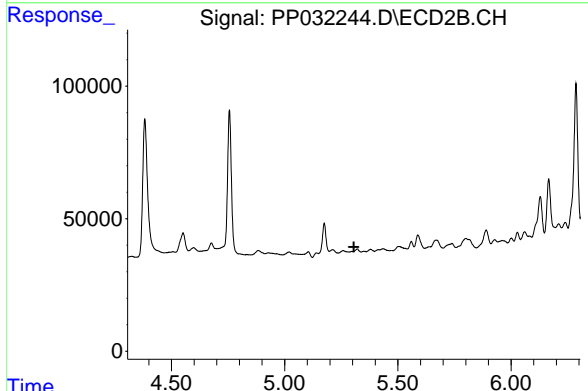


#2 Decachlorobiphenyl  
 R.T.: 9.333 min  
 Delta R.T.: -0.015 min  
 Response: 1301563  
 Conc: 38.81 ng/ml

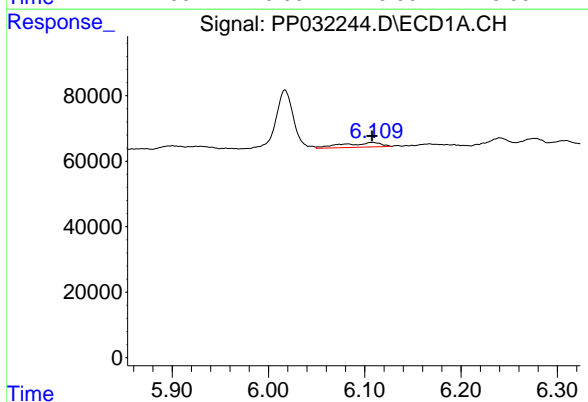


#3 AR-1016-1  
 R.T.: 6.108 min  
 Delta R.T.: 0.024 min  
 Response: 38354  
 Conc: 26.30 ng/ml

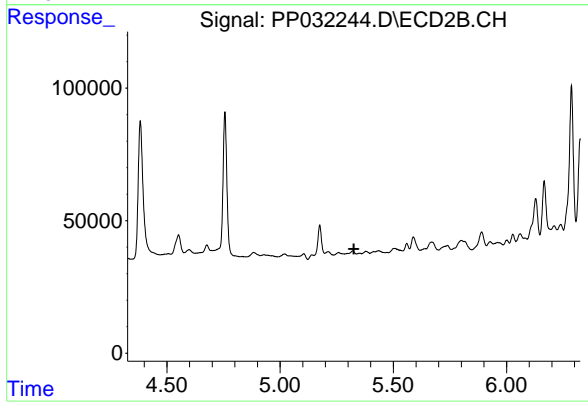
Instrument :  
 ECD\_L  
 ClientSampled :



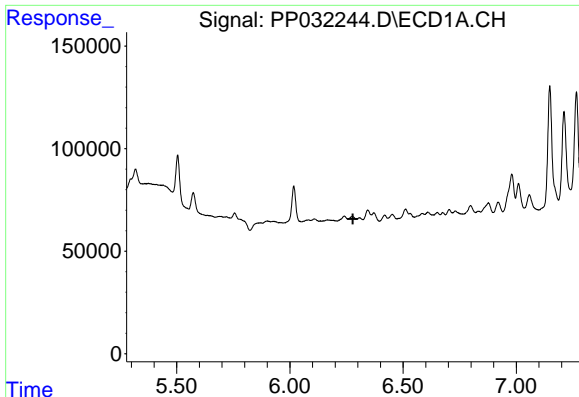
#3 AR-1016-1  
 R.T.: 0.000 min  
 Exp R.T. : 5.306 min  
 Response: 0  
 Conc: N.D.



#4 AR-1016-2  
 R.T.: 6.108 min  
 Delta R.T.: 0.000 min  
 Response: 38354  
 Conc: 17.08 ng/ml



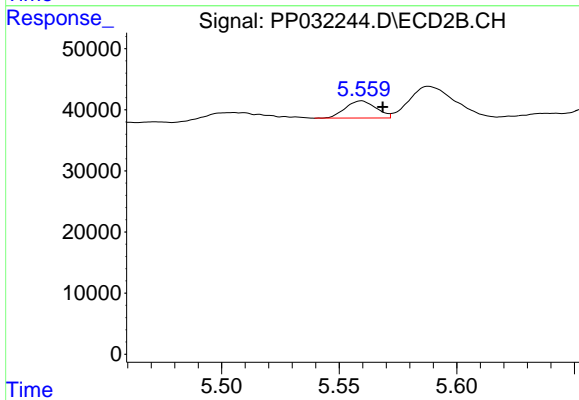
#4 AR-1016-2  
 R.T.: 0.000 min  
 Exp R.T. : 5.326 min  
 Response: 0  
 Conc: N.D.



#6 AR-1016-4

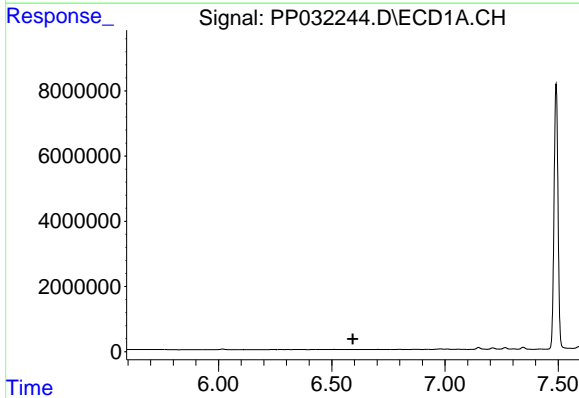
R.T.: 0.000 min  
 Exp R.T. : 6.279 min  
 Response: 0  
 Conc: N.D.

Instrument :  
 ECD\_L  
 ClientSampleId :



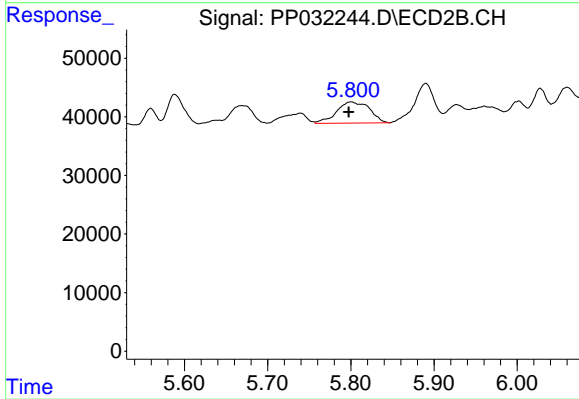
#6 AR-1016-4

R.T.: 5.560 min  
 Delta R.T.: -0.009 min  
 Response: 25474  
 Conc: 30.02 ng/ml



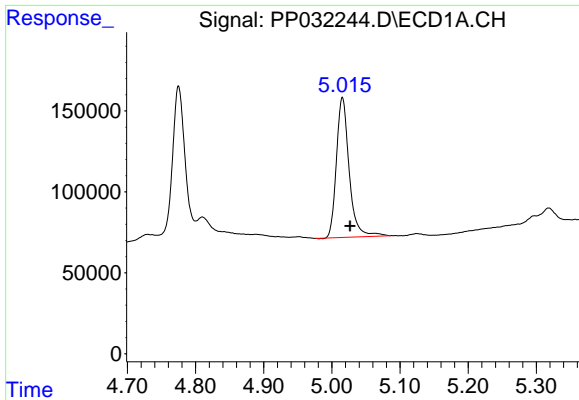
#7 AR-1016-5

R.T.: 0.000 min  
 Exp R.T. : 6.593 min  
 Response: 0  
 Conc: N.D.



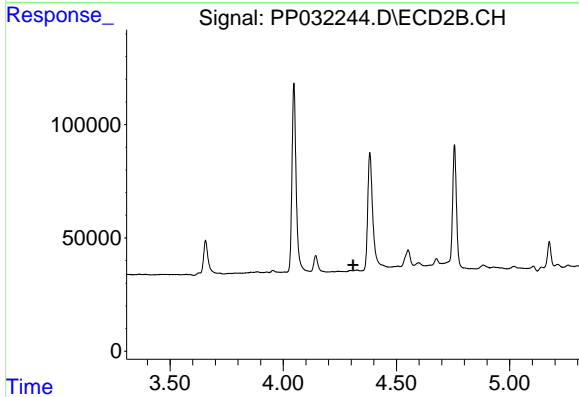
#7 AR-1016-5

R.T.: 5.800 min  
 Delta R.T.: 0.003 min  
 Response: 100040  
 Conc: 92.07 ng/ml

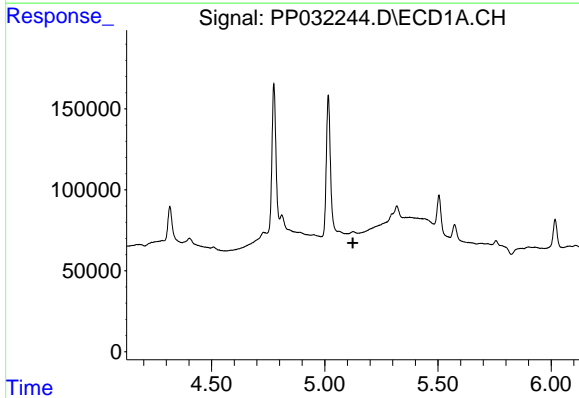


#8 AR-1221-1  
 R.T.: 5.015 min  
 Delta R.T.: -0.011 min  
 Response: 1122405  
 Conc: 2156.66 ng/ml

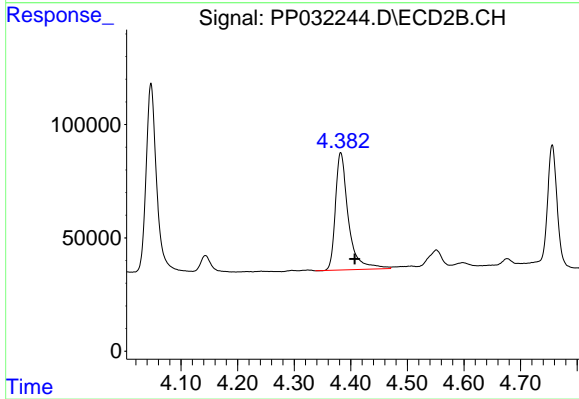
Instrument :  
 ECD\_L  
 ClientSampled :



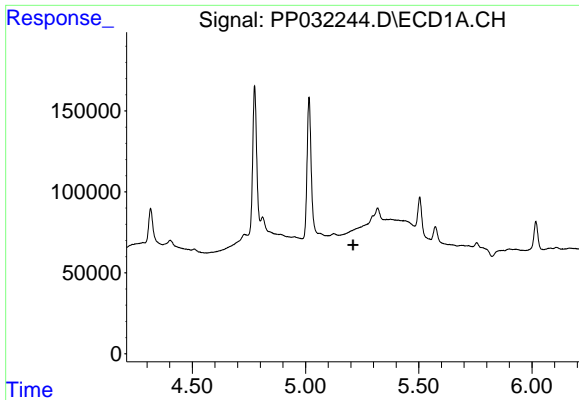
#8 AR-1221-1  
 R.T.: 0.000 min  
 Exp R.T. : 4.308 min  
 Response: 0  
 Conc: N.D.



#9 AR-1221-2  
 R.T.: 0.000 min  
 Exp R.T. : 5.124 min  
 Response: 0  
 Conc: N.D.



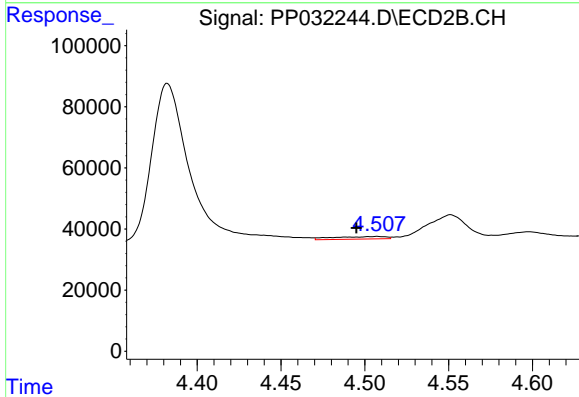
#9 AR-1221-2  
 R.T.: 4.382 min  
 Delta R.T.: -0.025 min  
 Response: 821393  
 Conc: 2282.52 ng/ml



#10 AR-1221-3

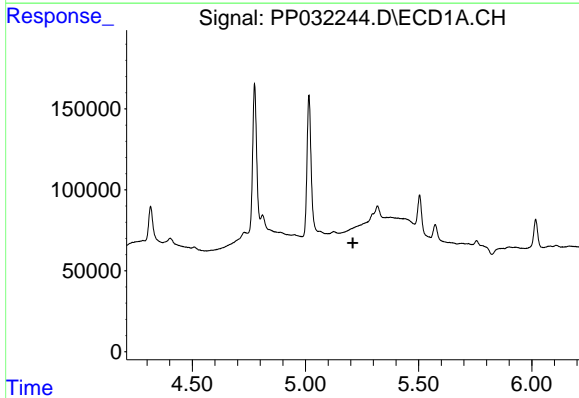
R.T.: 0.000 min  
 Exp R.T. : 5.210 min  
 Response: 0  
 Conc: N.D.

Instrument :  
 ECD\_L  
 ClientSampled :



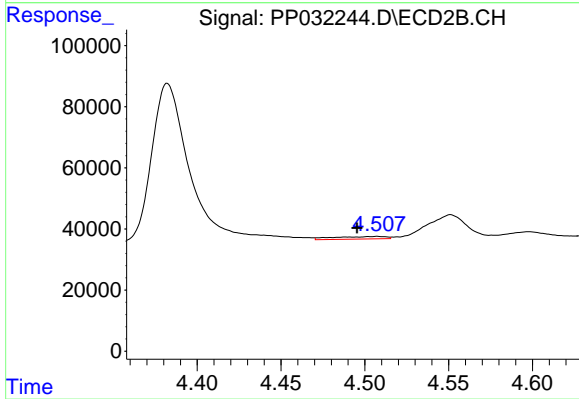
#10 AR-1221-3

R.T.: 4.508 min  
 Delta R.T.: 0.013 min  
 Response: 18110  
 Conc: 16.19 ng/ml



#11 AR-1232-1

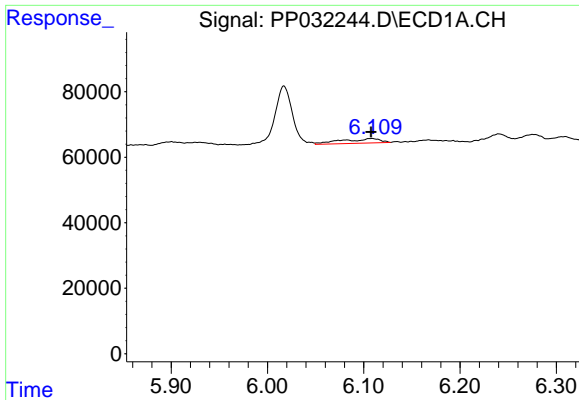
R.T.: 0.000 min  
 Exp R.T. : 5.210 min  
 Response: 0  
 Conc: N.D.



#11 AR-1232-1

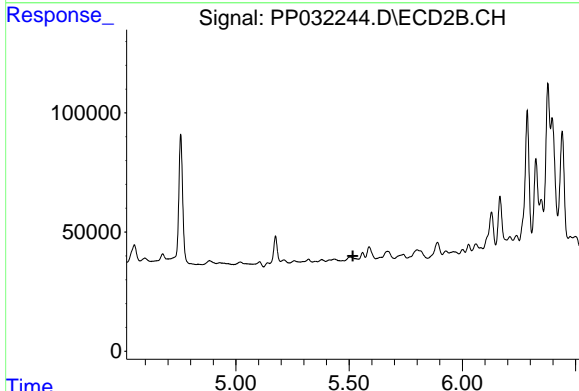
R.T.: 4.508 min  
 Delta R.T.: 0.012 min  
 Response: 18110  
 Conc: 19.55 ng/ml



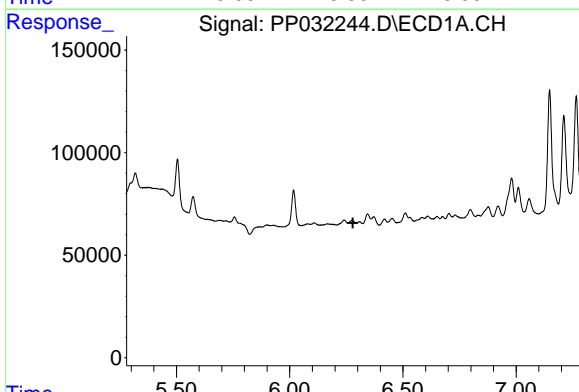


#13 AR-1232-3  
 R.T.: 6.108 min  
 Delta R.T.: 0.000 min  
 Response: 38354  
 Conc: 39.89 ng/ml

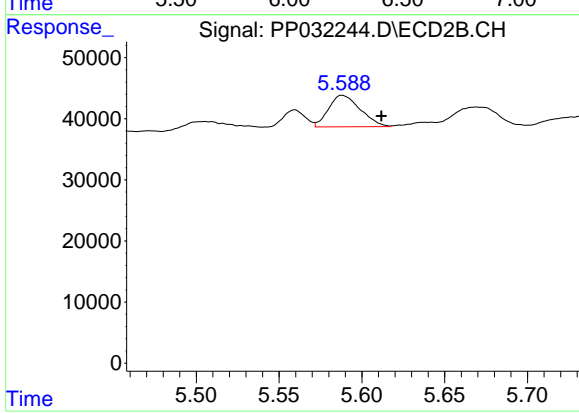
Instrument :  
 ECD\_L  
 ClientSampled :



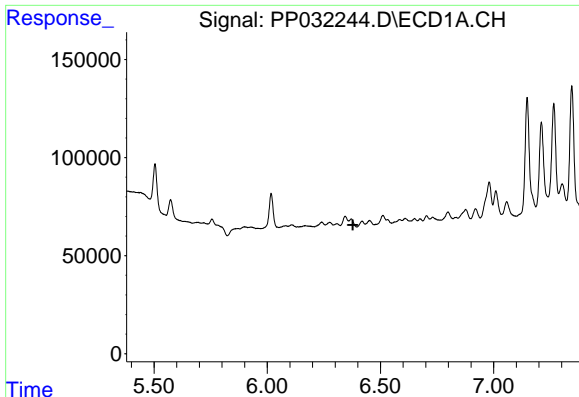
#13 AR-1232-3  
 R.T.: 0.000 min  
 Exp R.T. : 5.517 min  
 Response: 0  
 Conc: N.D.



#14 AR-1232-4  
 R.T.: 0.000 min  
 Exp R.T. : 6.279 min  
 Response: 0  
 Conc: N.D.



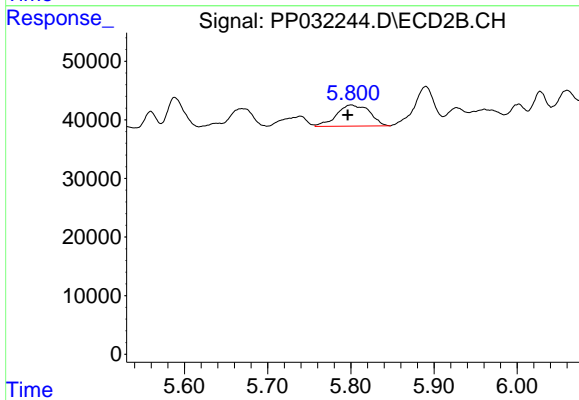
#14 AR-1232-4  
 R.T.: 5.588 min  
 Delta R.T.: -0.024 min  
 Response: 68770  
 Conc: 175.29 ng/ml



#15 AR-1232-5

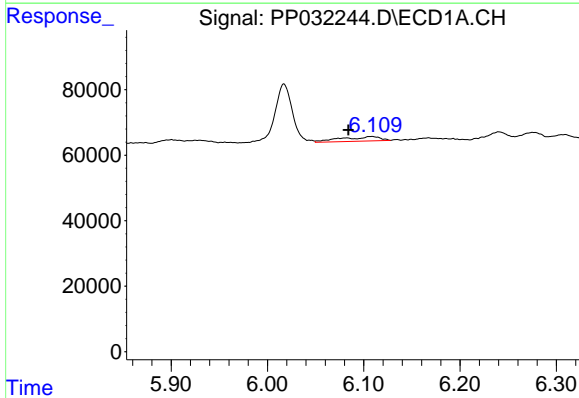
R.T.: 0.000 min  
 Exp R.T.: 6.378 min  
 Response: 0  
 Conc: N.D.

Instrument :  
 ECD\_L  
 ClientSampleId :



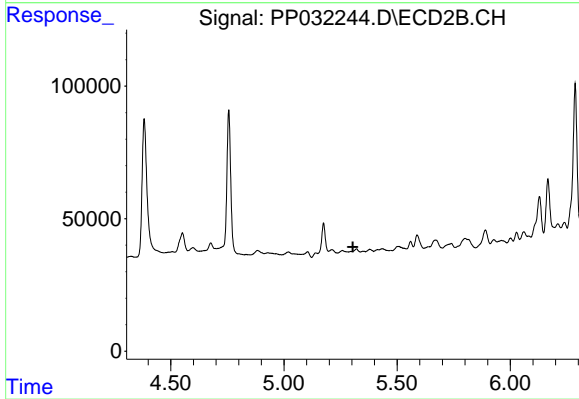
#15 AR-1232-5

R.T.: 5.800 min  
 Delta R.T.: 0.004 min  
 Response: 100040  
 Conc: 231.29 ng/ml



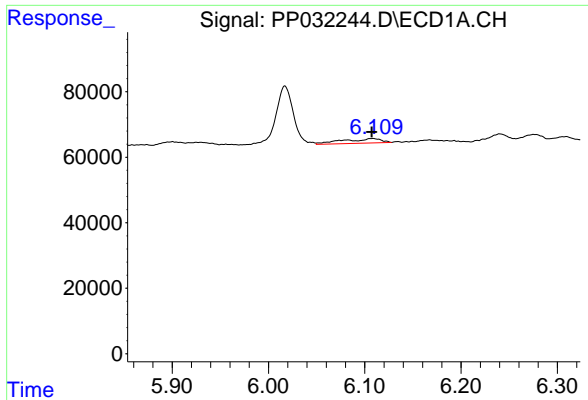
#16 AR-1242-1

R.T.: 6.108 min  
 Delta R.T.: 0.024 min  
 Response: 38354  
 Conc: 33.47 ng/ml



#16 AR-1242-1

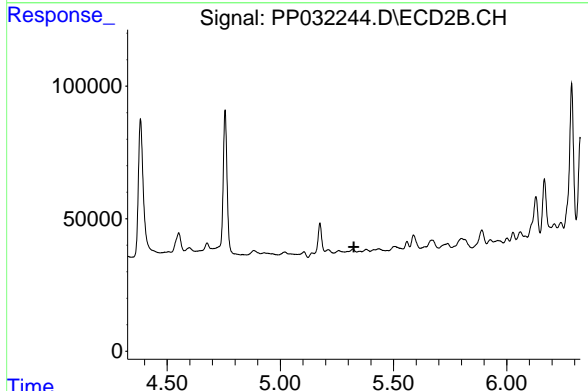
R.T.: 0.000 min  
 Exp R.T.: 5.305 min  
 Response: 0  
 Conc: N.D.



#17 AR-1242-2

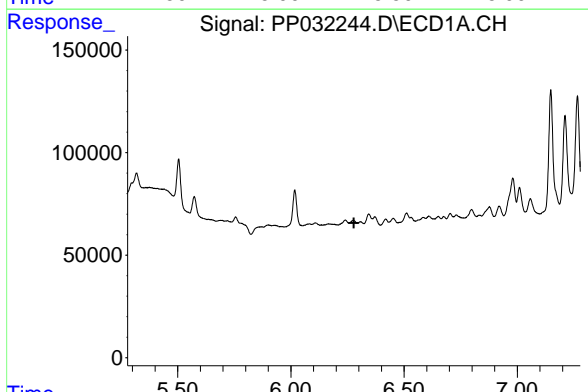
R.T.: 6.108 min  
 Delta R.T.: 0.001 min  
 Response: 38354  
 Conc: 21.78 ng/ml

Instrument :  
 ECD\_L  
 ClientSampled :



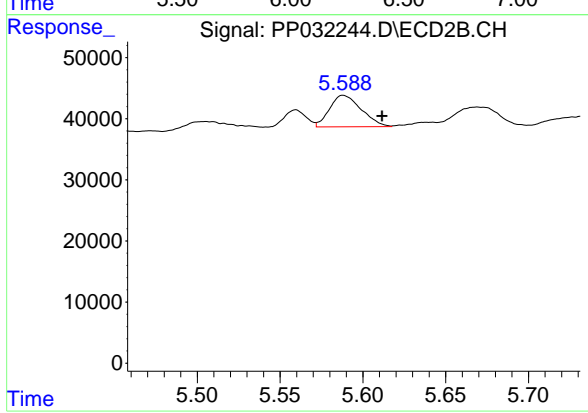
#17 AR-1242-2

R.T.: 0.000 min  
 Exp R.T. : 5.325 min  
 Response: 0  
 Conc: N.D.



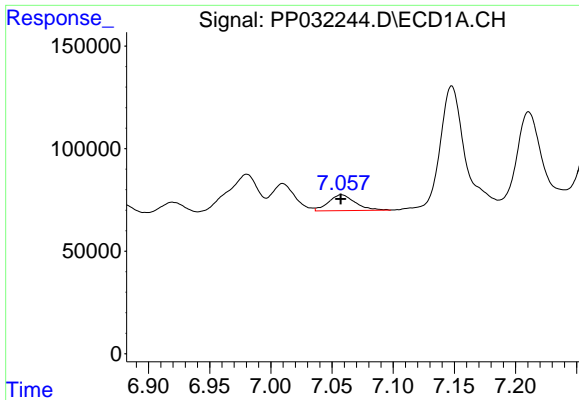
#19 AR-1242-4

R.T.: 0.000 min  
 Exp R.T. : 6.278 min  
 Response: 0  
 Conc: N.D.



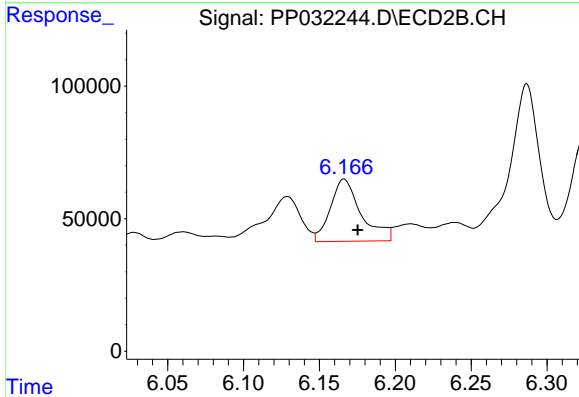
#19 AR-1242-4

R.T.: 5.588 min  
 Delta R.T.: -0.024 min  
 Response: 68770  
 Conc: 84.79 ng/ml

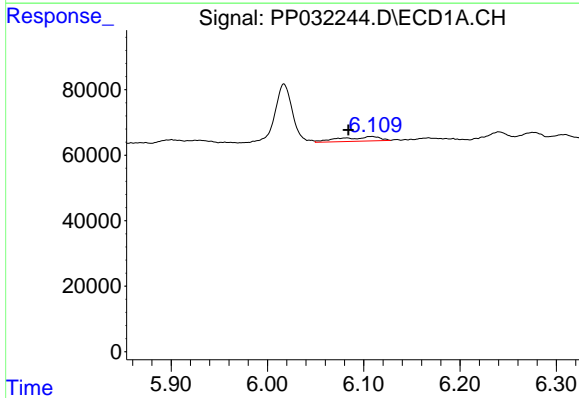


#20 AR-1242-5  
 R.T.: 7.058 min  
 Delta R.T.: 0.000 min  
 Response: 116193  
 Conc: 133.96 ng/ml

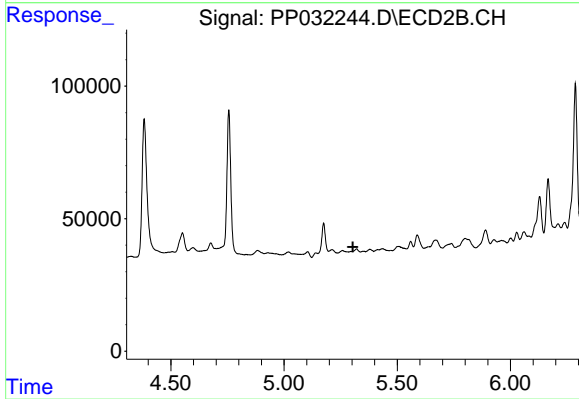
Instrument :  
 ECD\_L  
 ClientSampled :



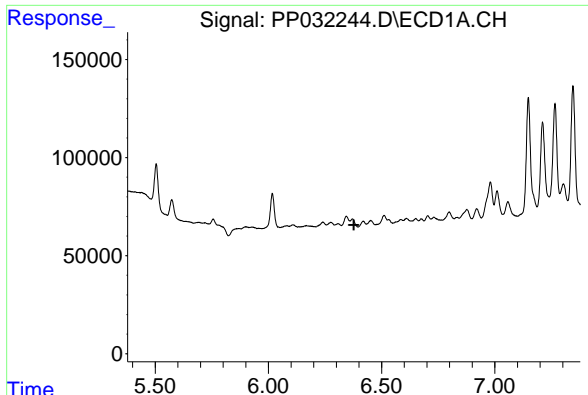
#20 AR-1242-5  
 R.T.: 6.166 min  
 Delta R.T.: -0.009 min  
 Response: 331707  
 Conc: 372.99 ng/ml



#21 AR-1248-1  
 R.T.: 6.108 min  
 Delta R.T.: 0.024 min  
 Response: 38354  
 Conc: 44.07 ng/ml



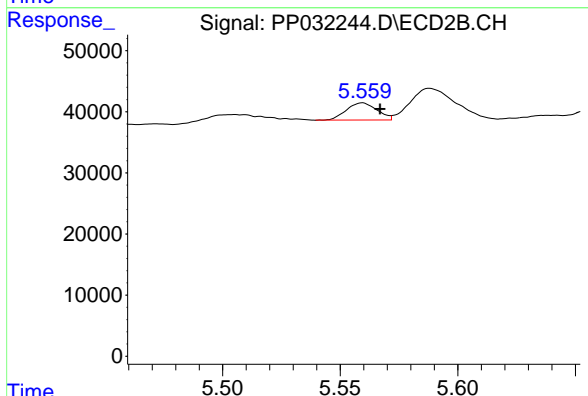
#21 AR-1248-1  
 R.T.: 0.000 min  
 Exp R.T.: 5.304 min  
 Response: 0  
 Conc: N.D.



#22 AR-1248-2

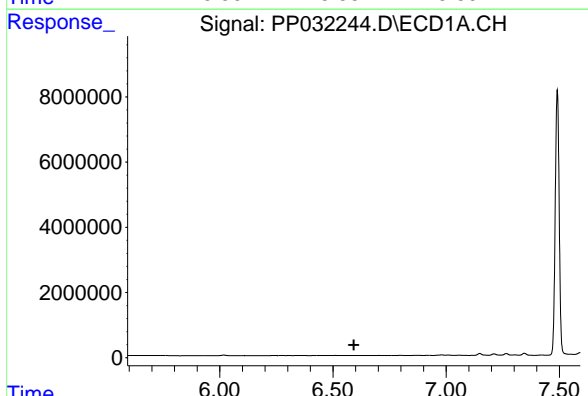
R.T.: 0.000 min  
 Exp R.T. : 6.378 min  
 Response: 0  
 Conc: N.D.

Instrument :  
 ECD\_L  
 ClientSampleId :



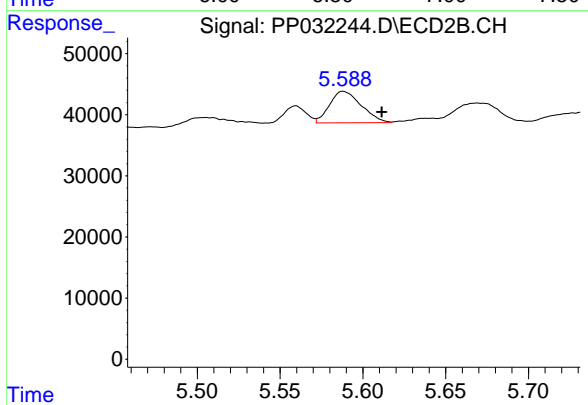
#22 AR-1248-2

R.T.: 5.560 min  
 Delta R.T.: -0.007 min  
 Response: 25474  
 Conc: 22.05 ng/ml



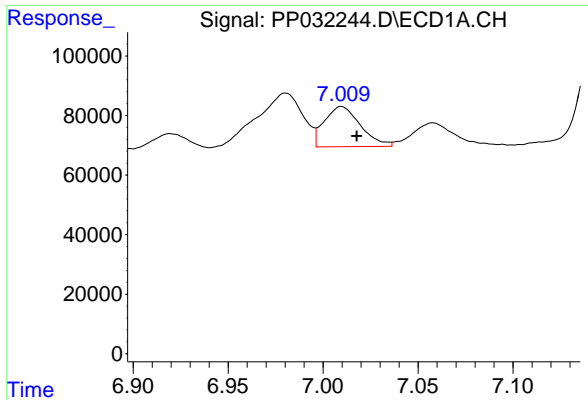
#23 AR-1248-3

R.T.: 0.000 min  
 Exp R.T. : 6.592 min  
 Response: 0  
 Conc: N.D.



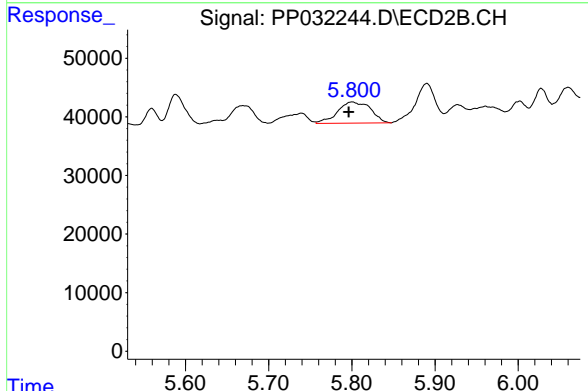
#23 AR-1248-3

R.T.: 5.588 min  
 Delta R.T.: -0.023 min  
 Response: 68770  
 Conc: 56.30 ng/ml

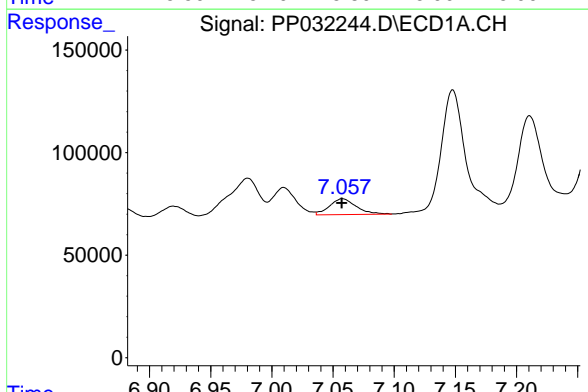


#24 AR-1248-4  
 R.T.: 7.010 min  
 Delta R.T.: -0.008 min  
 Response: 178320  
 Conc: 124.65 ng/ml

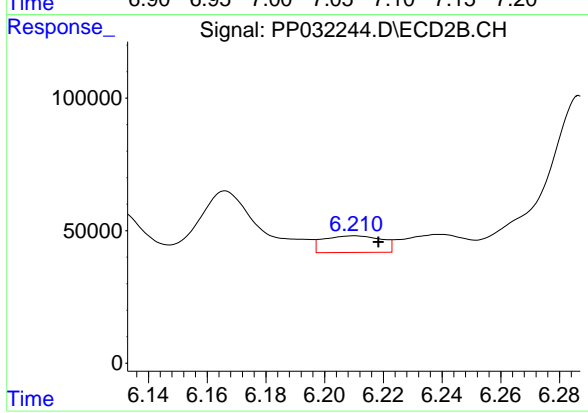
Instrument :  
 ECD\_L  
 ClientSampleId :



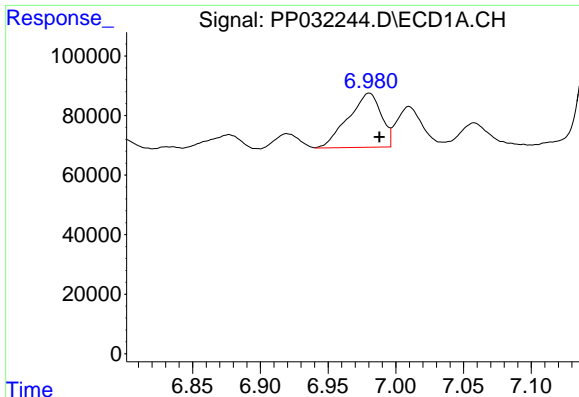
#24 AR-1248-4  
 R.T.: 5.800 min  
 Delta R.T.: 0.004 min  
 Response: 100040  
 Conc: 68.22 ng/ml



#25 AR-1248-5  
 R.T.: 7.058 min  
 Delta R.T.: 0.000 min  
 Response: 116193  
 Conc: 78.30 ng/ml



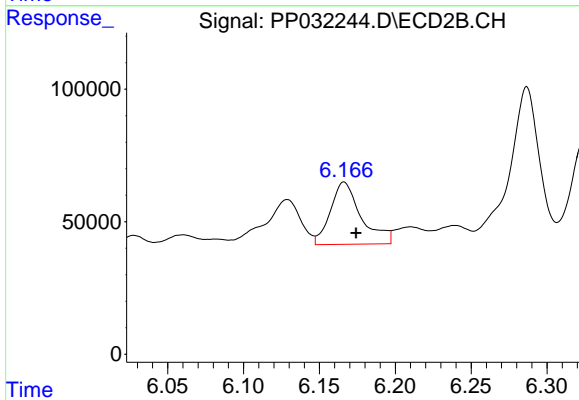
#25 AR-1248-5  
 R.T.: 6.210 min  
 Delta R.T.: -0.008 min  
 Response: 86112  
 Conc: 68.64 ng/ml



#26 AR-1254-1

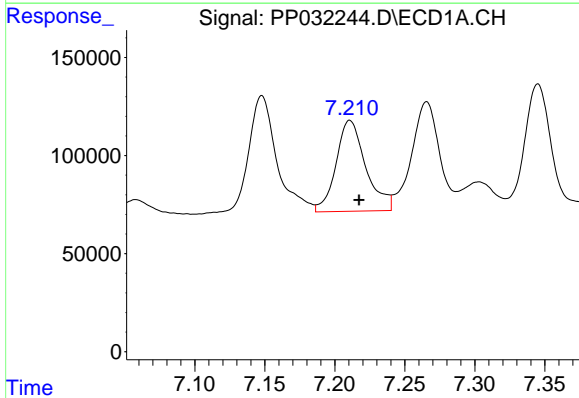
R.T.: 6.980 min  
 Delta R.T.: -0.008 min  
 Response: 308022  
 Conc: 198.31 ng/ml

Instrument :  
 ECD\_L  
 ClientSampleId :



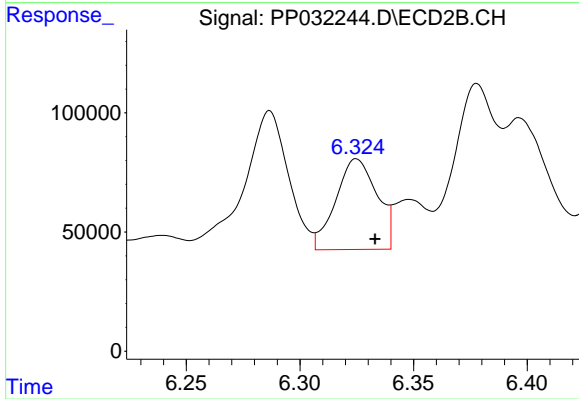
#26 AR-1254-1

R.T.: 6.166 min  
 Delta R.T.: -0.008 min  
 Response: 331707  
 Conc: 160.48 ng/ml



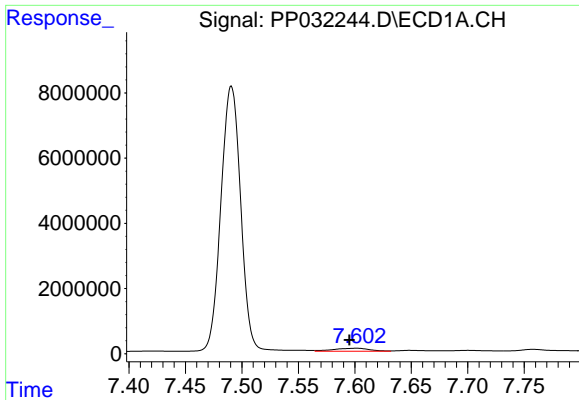
#27 AR-1254-2

R.T.: 7.211 min  
 Delta R.T.: -0.007 min  
 Response: 685596  
 Conc: 298.05 ng/ml



#27 AR-1254-2

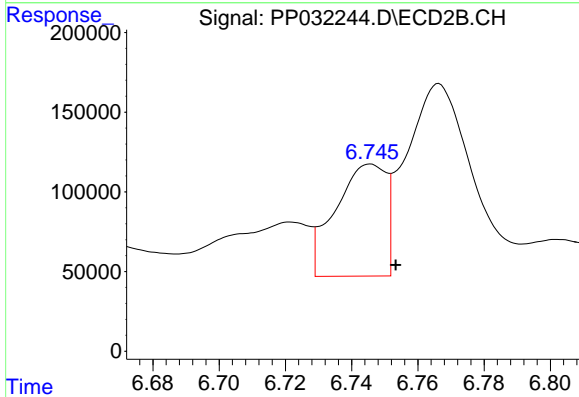
R.T.: 6.325 min  
 Delta R.T.: -0.008 min  
 Response: 479904  
 Conc: 267.70 ng/ml



#28 AR-1254-3

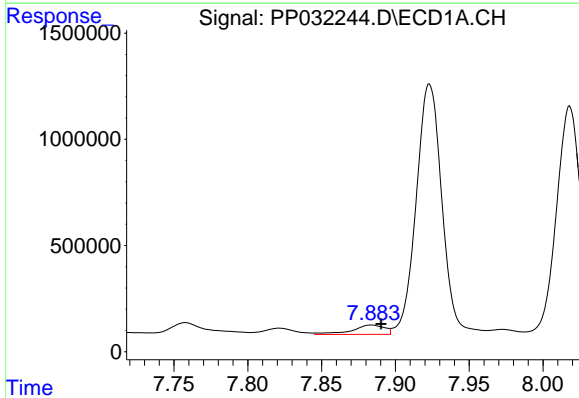
R.T.: 7.602 min  
 Delta R.T.: 0.006 min  
 Response: 2051135  
 Conc: 842.38 ng/ml

Instrument :  
 ECD\_L  
 ClientSampled :



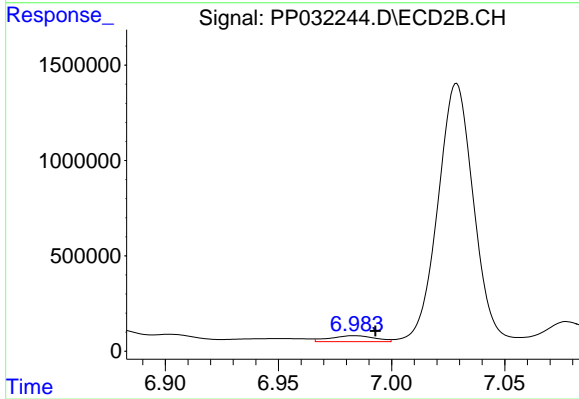
#28 AR-1254-3

R.T.: 6.746 min  
 Delta R.T.: -0.008 min  
 Response: 745910  
 Conc: 260.99 ng/ml



#29 AR-1254-4

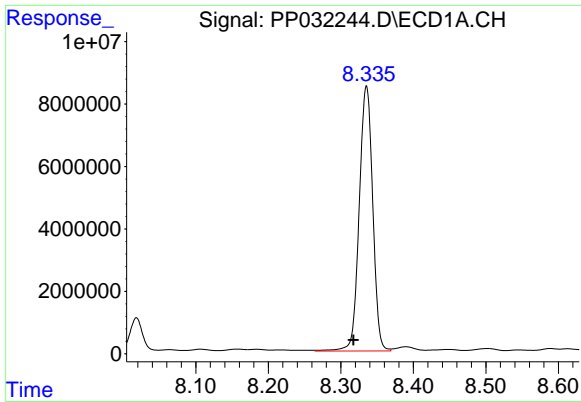
R.T.: 7.884 min  
 Delta R.T.: -0.007 min  
 Response: 675093  
 Conc: 438.60 ng/ml



#29 AR-1254-4

R.T.: 6.984 min  
 Delta R.T.: -0.009 min  
 Response: 427480  
 Conc: 309.33 ng/ml

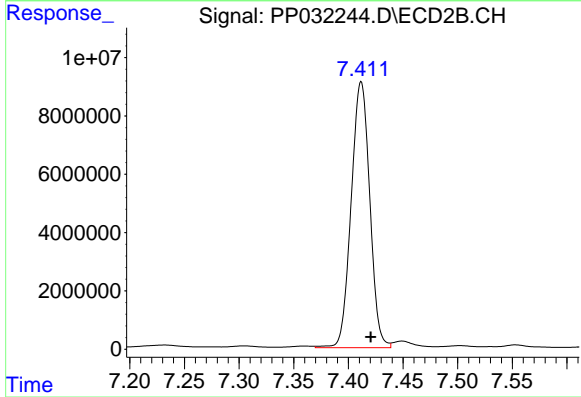




#30 AR-1254-5

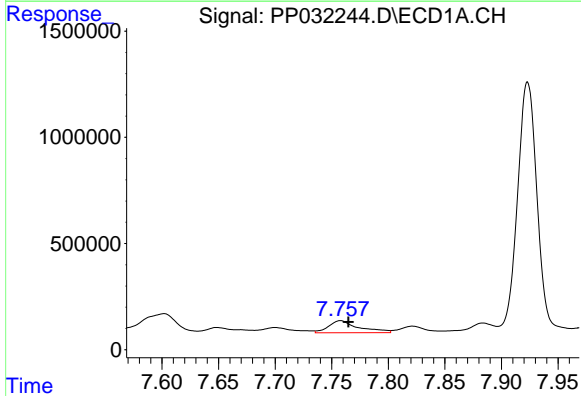
R.T.: 8.335 min  
 Delta R.T.: 0.018 min  
 Response: 109900634  
 Conc: 64124.55 ng/ml

Instrument :  
 ECD\_L  
 ClientSampleId :



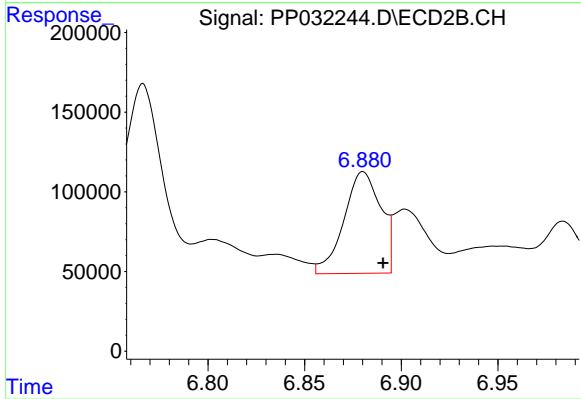
#30 AR-1254-5

R.T.: 7.412 min  
 Delta R.T.: -0.009 min  
 Response: 107985983  
 Conc: 45391.06 ng/ml



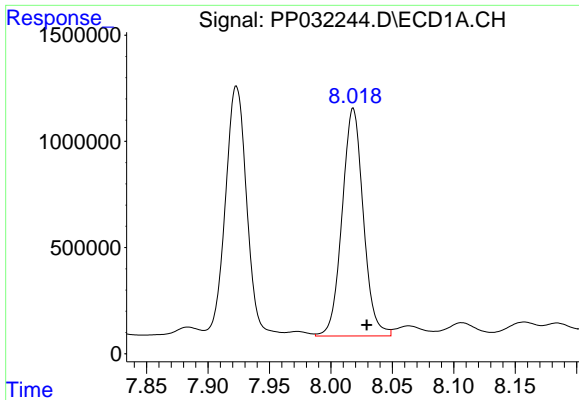
#31 AR-1260-1

R.T.: 7.758 min  
 Delta R.T.: -0.007 min  
 Response: 1052910  
 Conc: 607.53 ng/ml



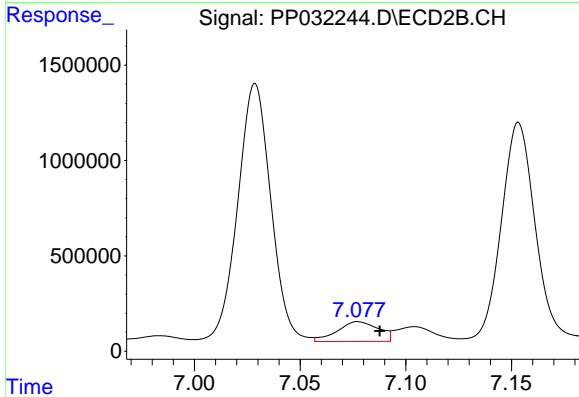
#31 AR-1260-1

R.T.: 6.880 min  
 Delta R.T.: -0.010 min  
 Response: 849388  
 Conc: 448.02 ng/ml

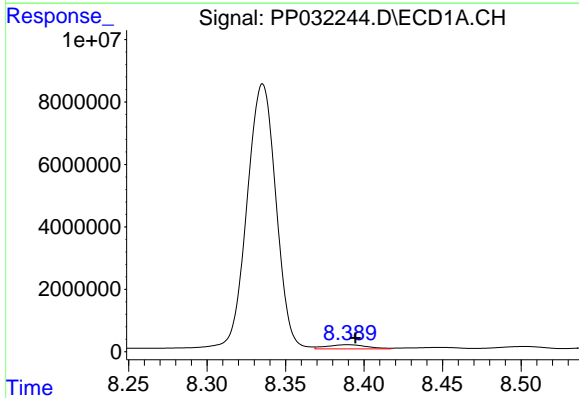


#32 AR-1260-2  
 R.T.: 8.018 min  
 Delta R.T.: -0.011 min  
 Response: 12886854  
 Conc: 6272.22 ng/ml

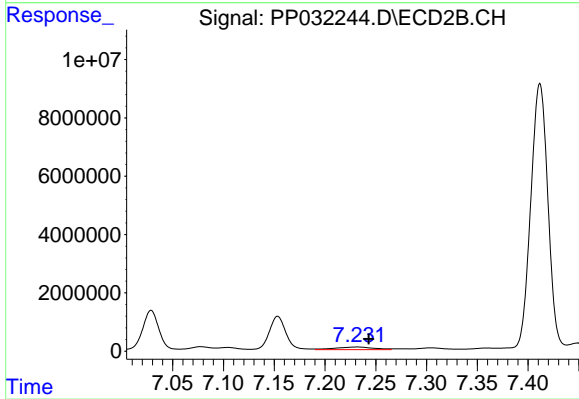
Instrument :  
 ECD\_L  
 ClientSampleId :



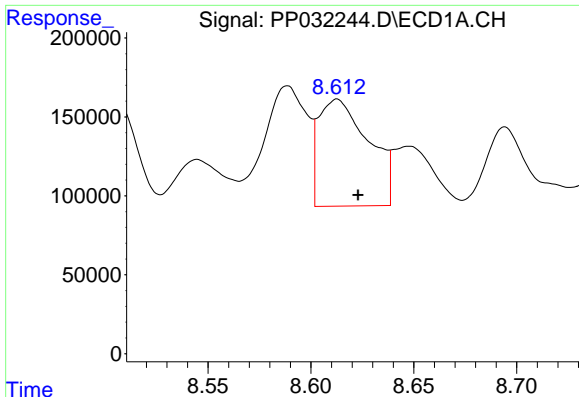
#32 AR-1260-2  
 R.T.: 7.077 min  
 Delta R.T.: -0.010 min  
 Response: 1409395  
 Conc: 647.89 ng/ml



#33 AR-1260-3  
 R.T.: 8.390 min  
 Delta R.T.: -0.005 min  
 Response: 2425526  
 Conc: 1390.02 ng/ml



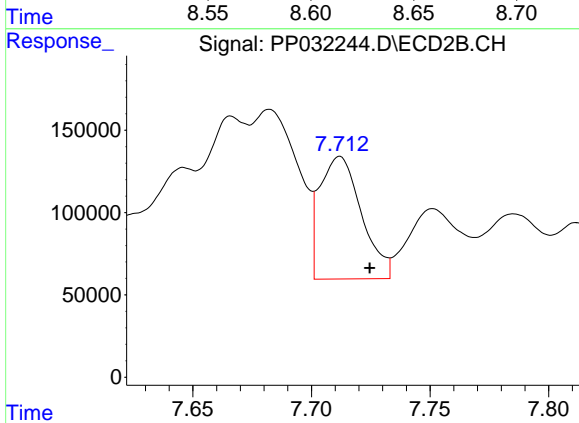
#33 AR-1260-3  
 R.T.: 7.232 min  
 Delta R.T.: -0.011 min  
 Response: 2376768  
 Conc: 1118.65 ng/ml



#34 AR-1260-4

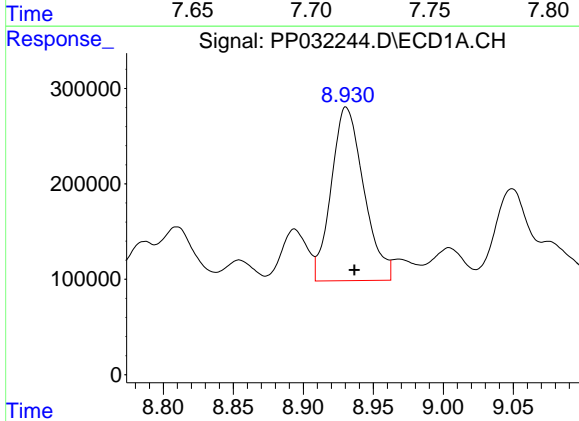
R.T.: 8.613 min  
 Delta R.T.: -0.010 min  
 Response: 1147674  
 Conc: 636.89 ng/ml

Instrument :  
 ECD\_L  
 ClientSampleId :



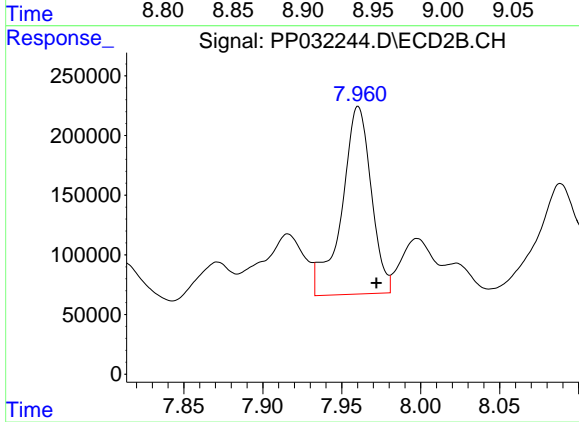
#34 AR-1260-4

R.T.: 7.712 min  
 Delta R.T.: -0.013 min  
 Response: 911302  
 Conc: 512.95 ng/ml



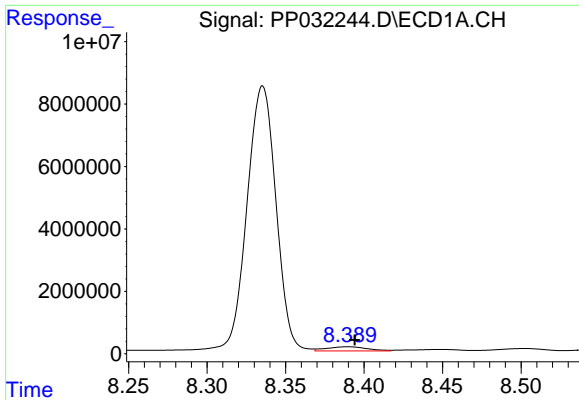
#35 AR-1260-5

R.T.: 8.931 min  
 Delta R.T.: -0.006 min  
 Response: 2944288  
 Conc: 819.02 ng/ml



#35 AR-1260-5

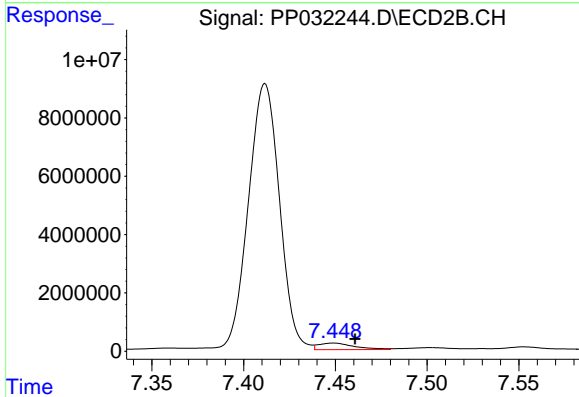
R.T.: 7.960 min  
 Delta R.T.: -0.012 min  
 Response: 2051241  
 Conc: 536.20 ng/ml



#36 AR-1262-1

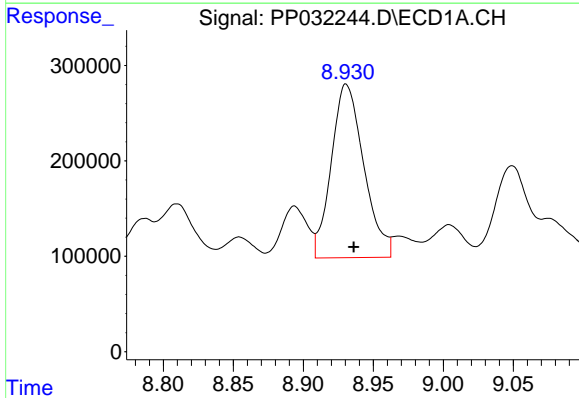
R.T.: 8.390 min  
 Delta R.T.: -0.004 min  
 Response: 2425526  
 Conc: 898.90 ng/ml

Instrument :  
 ECD\_L  
 ClientSampleId :



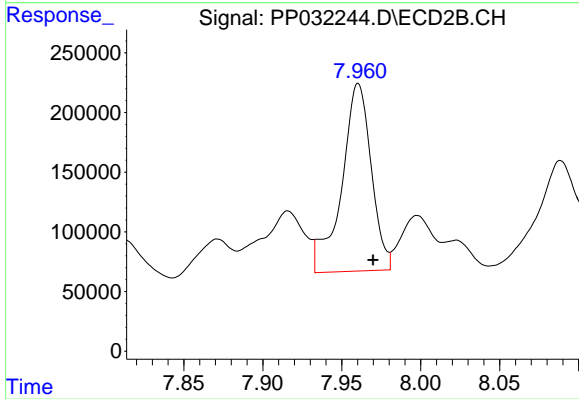
#36 AR-1262-1

R.T.: 7.449 min  
 Delta R.T.: -0.012 min  
 Response: 3061058  
 Conc: 1139.01 ng/ml



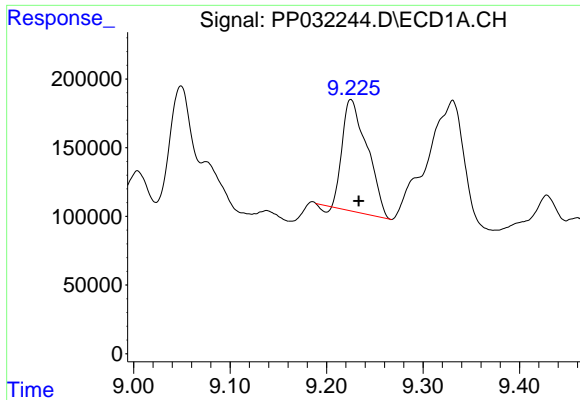
#37 AR-1262-2

R.T.: 8.931 min  
 Delta R.T.: -0.005 min  
 Response: 2944288  
 Conc: 726.05 ng/ml



#37 AR-1262-2

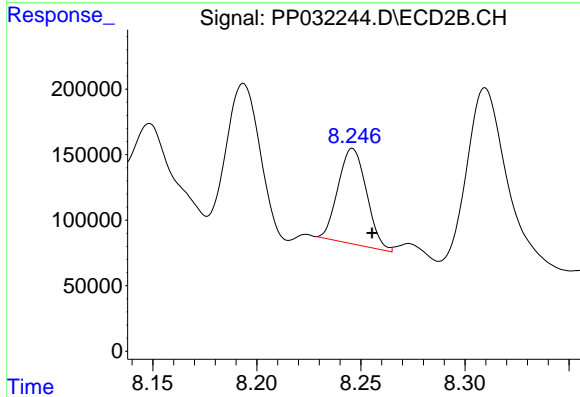
R.T.: 7.960 min  
 Delta R.T.: -0.009 min  
 Response: 2051241  
 Conc: 491.94 ng/ml



#38 AR-1262-3

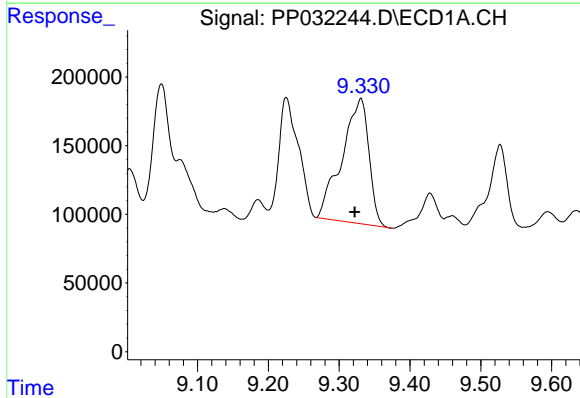
R.T.: 9.225 min  
 Delta R.T.: -0.008 min  
 Response: 1442038  
 Conc: 503.24 ng/ml

Instrument :  
 ECD\_L  
 ClientSampled :



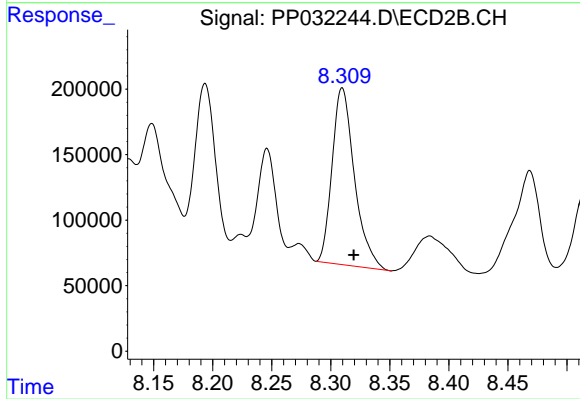
#38 AR-1262-3

R.T.: 8.246 min  
 Delta R.T.: -0.009 min  
 Response: 692186  
 Conc: 382.06 ng/ml



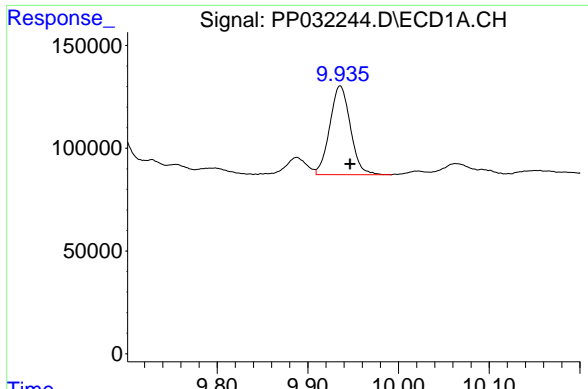
#39 AR-1262-4

R.T.: 9.331 min  
 Delta R.T.: 0.009 min  
 Response: 2401915  
 Conc: 985.28 ng/ml



#39 AR-1262-4

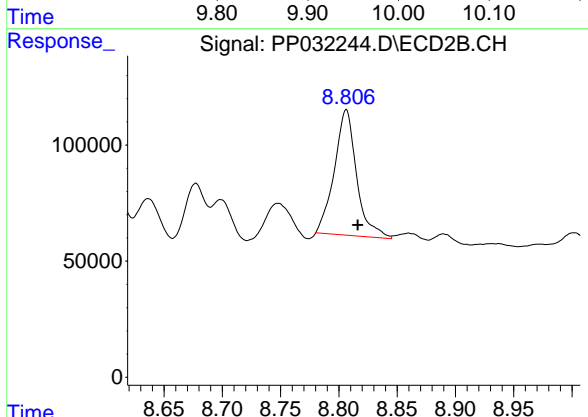
R.T.: 8.310 min  
 Delta R.T.: -0.010 min  
 Response: 1775285  
 Conc: 527.68 ng/ml



#40 AR-1262-5

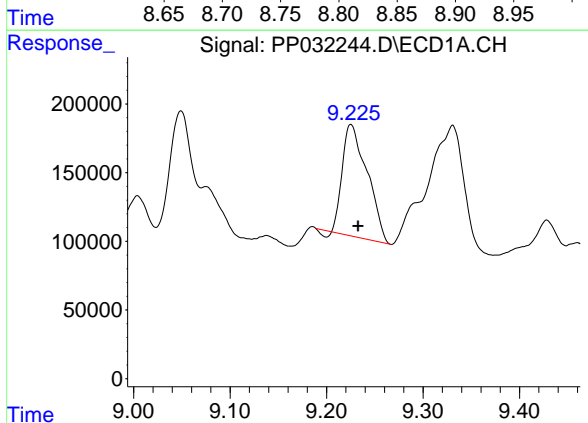
R.T.: 9.936 min  
 Delta R.T.: -0.011 min  
 Response: 680509  
 Conc: 502.00 ng/ml

Instrument :  
 ECD\_L  
 ClientSampled :



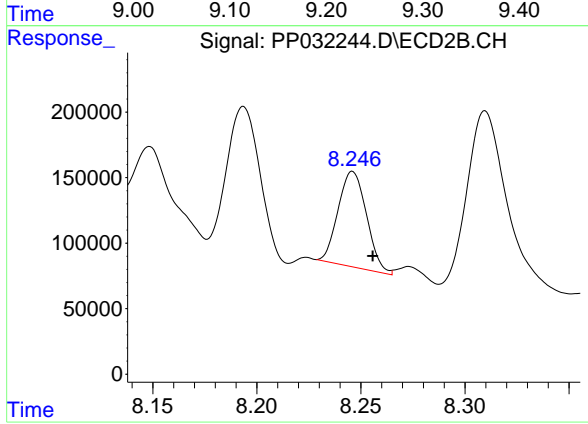
#40 AR-1262-5

R.T.: 8.806 min  
 Delta R.T.: -0.010 min  
 Response: 717905  
 Conc: 547.97 ng/ml



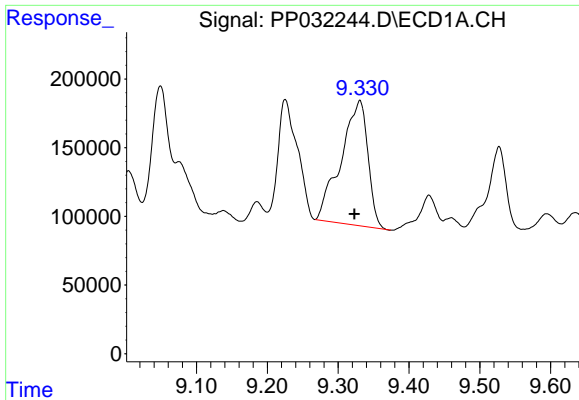
#41 AR-1268-1

R.T.: 9.225 min  
 Delta R.T.: -0.007 min  
 Response: 1442038  
 Conc: 277.51 ng/ml



#41 AR-1268-1

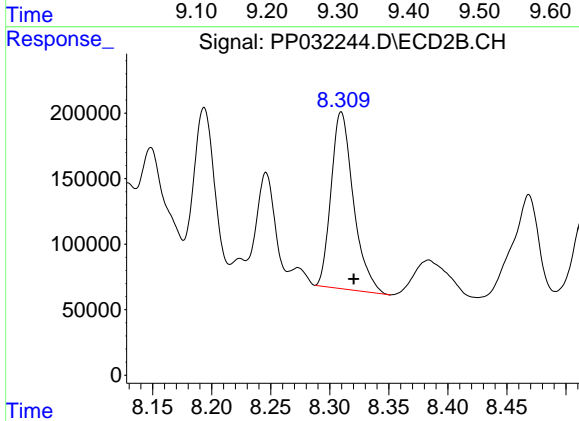
R.T.: 8.246 min  
 Delta R.T.: -0.010 min  
 Response: 692186  
 Conc: 137.35 ng/ml



#42 AR-1268-2

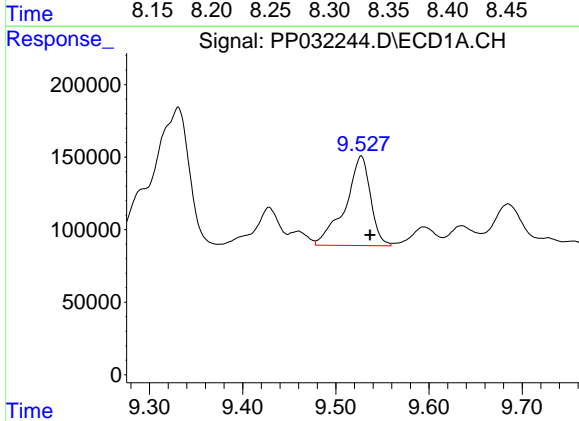
R.T.: 9.331 min  
 Delta R.T.: 0.008 min  
 Response: 2401915  
 Conc: 493.46 ng/ml

Instrument :  
 ECD\_L  
 ClientSampled :



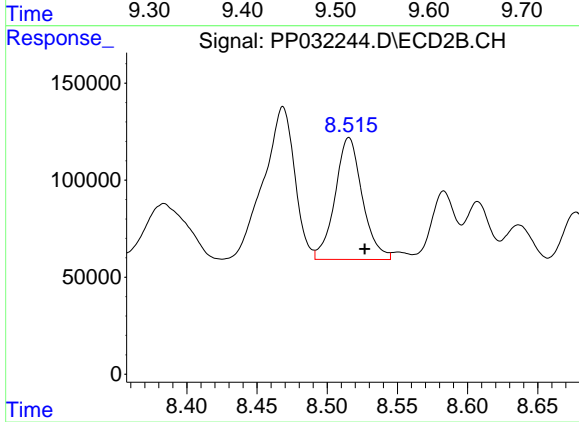
#42 AR-1268-2

R.T.: 8.310 min  
 Delta R.T.: -0.011 min  
 Response: 1775285  
 Conc: 347.22 ng/ml



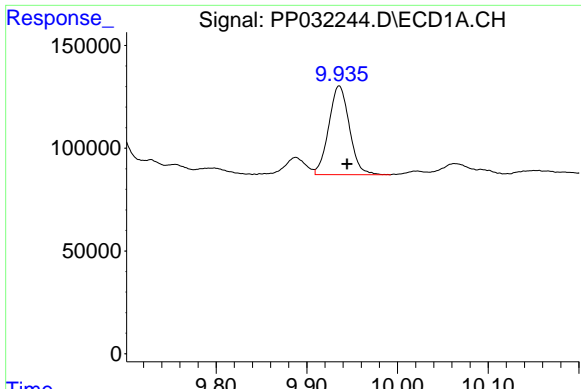
#43 AR-1268-3

R.T.: 9.527 min  
 Delta R.T.: -0.009 min  
 Response: 1157857  
 Conc: 267.93 ng/ml



#43 AR-1268-3

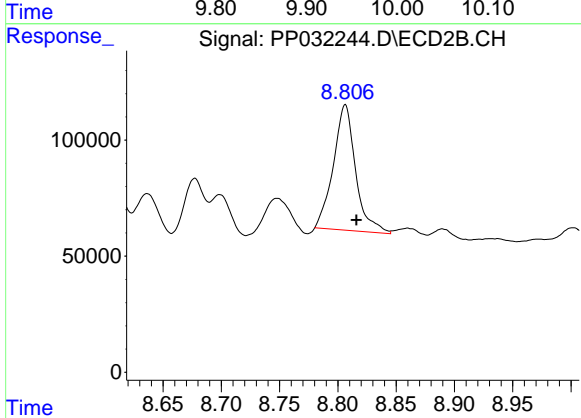
R.T.: 8.515 min  
 Delta R.T.: -0.011 min  
 Response: 850777  
 Conc: 192.96 ng/ml



#44 AR-1268-4

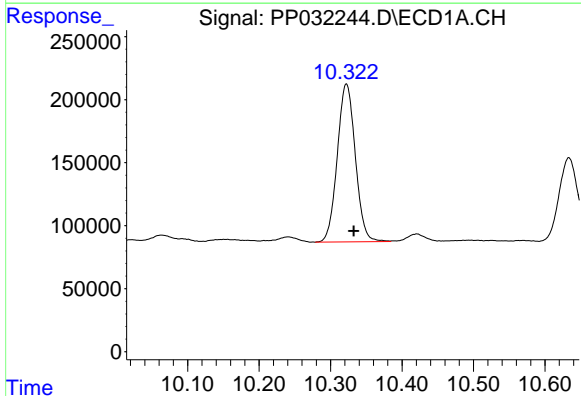
R.T.: 9.936 min  
 Delta R.T.: -0.009 min  
 Response: 680509  
 Conc: 489.82 ng/ml

Instrument :  
 ECD\_L  
 ClientSampled :



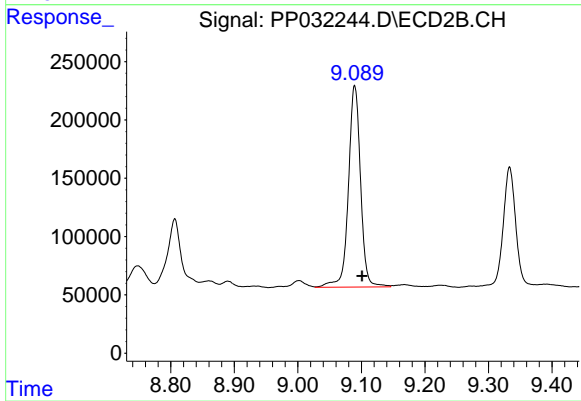
#44 AR-1268-4

R.T.: 8.806 min  
 Delta R.T.: -0.010 min  
 Response: 717905  
 Conc: 491.24 ng/ml



#45 AR-1268-5

R.T.: 10.322 min  
 Delta R.T.: -0.010 min  
 Response: 2198677  
 Conc: 182.54 ng/ml



#45 AR-1268-5

R.T.: 9.090 min  
 Delta R.T.: -0.011 min  
 Response: 2292856  
 Conc: 181.32 ng/ml