

Data Path : Z:\pestpcbsrv\HPCHEM1\ECD_L\Data\PL122118\
 Data File : PL043354.D
 Signal(s) : Signal #1: ECD1A.ch Signal #2: ECD2B.ch
 Acq On : 21 Dec 2018 14:28
 Operator : AJ\SJ
 Sample : J6191-03
 Misc :
 ALS Vial : 10 Sample Multiplier: 1

Instrument :
 ECD_L
 ClientSampleId :
 NB-07-122018-B

Integration File signal 1: autoint1.e
 Integration File signal 2: autoint2.e
 Quant Time: Dec 21 22:36:21 2018
 Quant Method : Z:\pestpcbsrv\HPCHEM1\ECD_L\methods\PL120618.M
 Quant Title : GC Extractables
 QLast Update : Fri Dec 07 00:20:08 2018
 Response via : Initial Calibration
 Integrator: ChemStation

Volume Inj. : 2 µl
 Signal #1 Phase : ZB-MR2 Signal #2 Phase: ZB-MR2
 Signal #1 Info : 30M x 0.32mm x0.5 Signal #2 Info : 30M x 0.32mm x0.25µm

Compound	RT#1	RT#2	Resp#1	Resp#2	ng/ml	ng/ml

System Monitoring Compounds						
1) SA Tetrachlo...	3.464	4.100	65059321	36376415	10.608	12.273
28) SA Decachlor...	8.203	9.233	58557780	24913540	8.968	9.551
Target Compounds						
6) B beta-BHC	4.394f	0.000	4626160	0	1.254	N.D. #
7) B delta-BHC	0.000	5.172	0	2076152	N.D.	0.483 #
8) B Heptachlo...	0.000	6.010	0	3162201	N.D.	0.834 #
9) A Endosulfan I	5.455f	6.307f	10215760	13552852	1.394	3.992 #
10) B gamma-Chl...	5.418	6.233	17624121	3102154	2.186	0.844 #
11) B alpha-Chl...	5.455	6.307	10215760	13552852	1.287	3.768 #
12) B 4,4'-DDE	5.621	6.459	2599119	5217812	0.375	1.440 #
14) MA Endrin	6.067f	0.000	2934347	0	0.408	N.D. #
15) B Endosulfa...	6.290	0.000	3004145	0	0.452	N.D. #
16) A 4,4'-DDD	6.067f	0.000	2934347	0	0.517	N.D. #
17) MA 4,4'-DDT	6.373	0.000	2540363	0	0.427	N.D. #
21) B Endrin ke...	0.000	7.824f	0	864927	N.D.	0.283 #
23) Chlordane-1	4.332	5.172	2891706	2076152	10.762	14.690 #
24) Chlordane-2	4.836	0.000	2091999	0	7.289	N.D. #
25) Chlordane-3	5.418	6.233	17624121	3102154	21.207	6.317 #
26) Chlordane-4	5.455	6.307	10215760	13552852	13.511	23.746 #
27) Chlordane-5	6.290	0.000	3004145	0	12.525	N.D. #

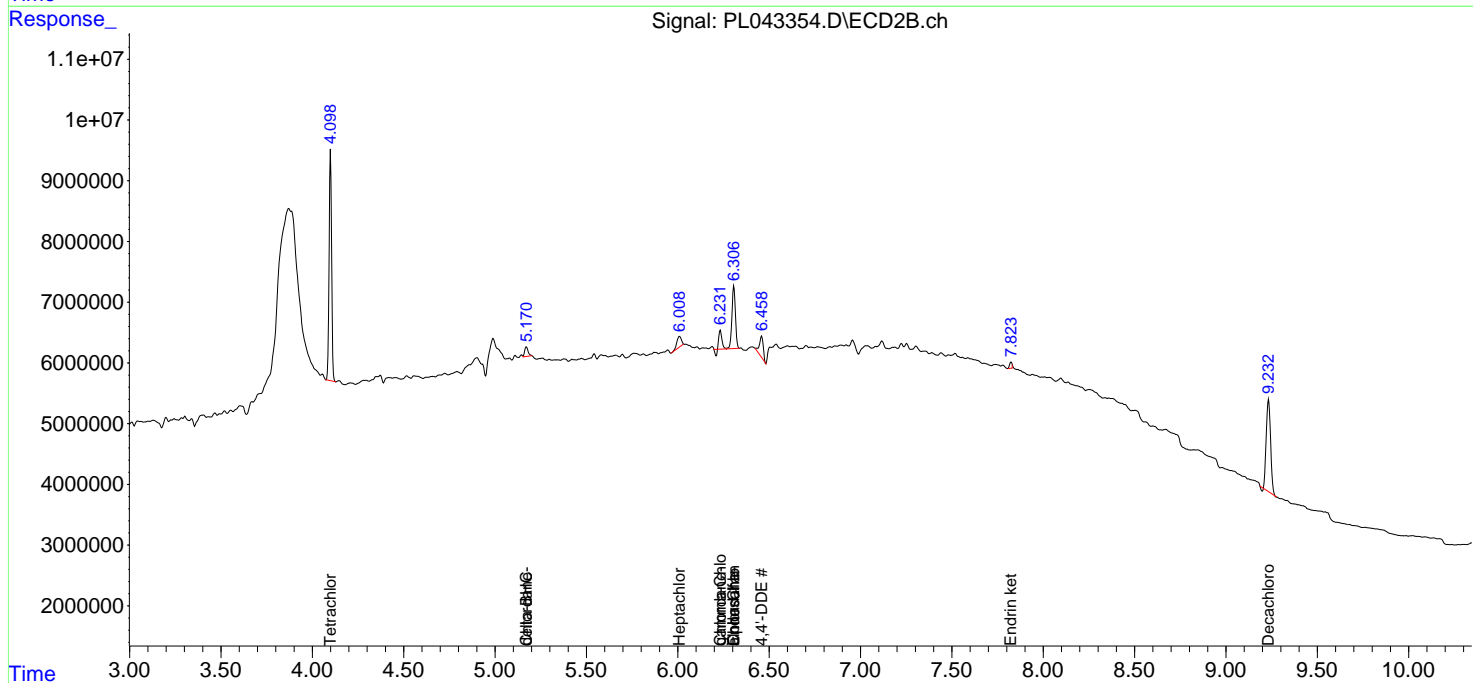
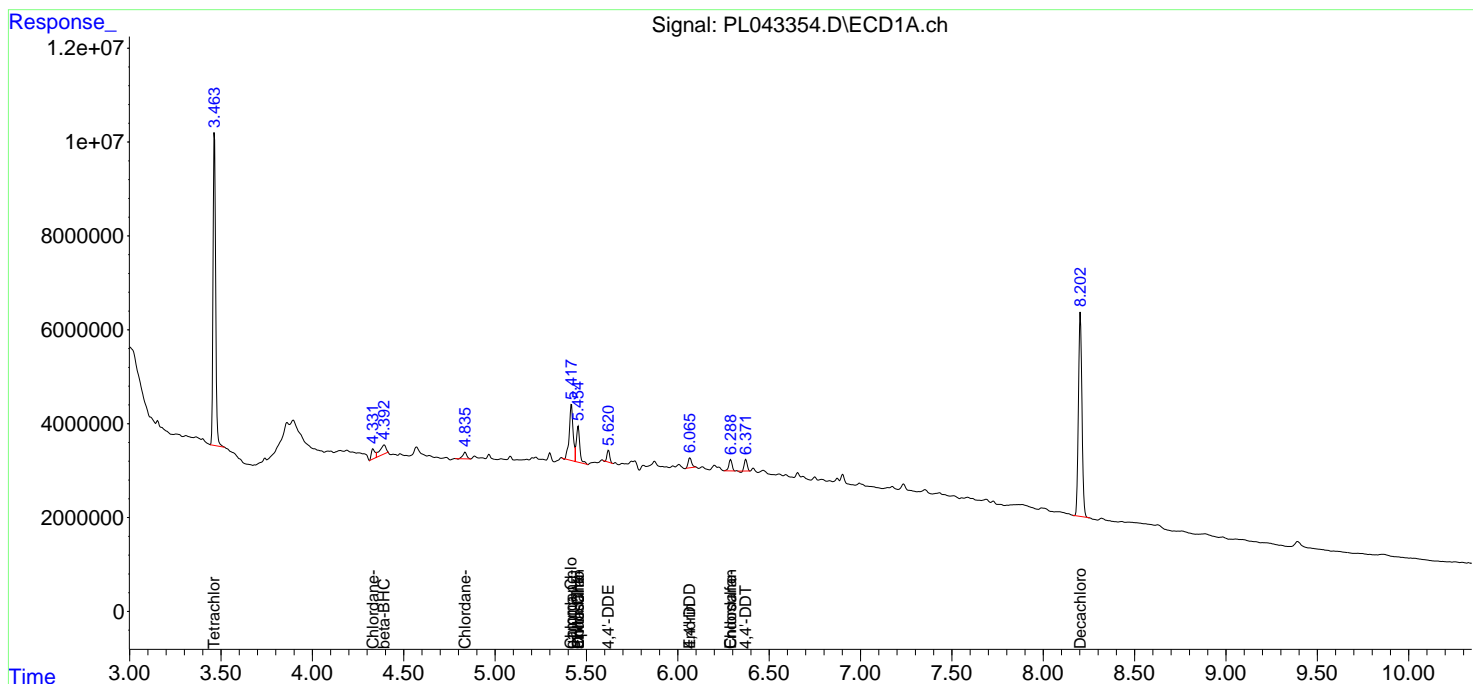
(f)=RT Delta > 1/2 Window (#)=Amounts differ by > 25% (m)=manual int.

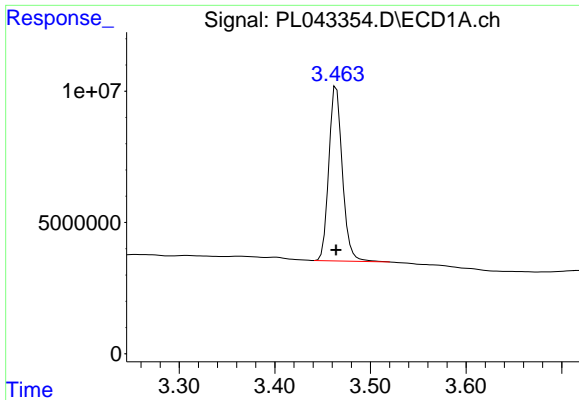
Data Path : Z:\pestpcbsrv\HPCHEM1\ECD_L\Data\PL122118\
 Data File : PL043354.D
 Signal(s) : Signal #1: ECD1A.ch Signal #2: ECD2B.ch
 Acq On : 21 Dec 2018 14:28
 Operator : AJ\SJ
 Sample : J6191-03
 Misc :
 ALS Vial : 10 Sample Multiplier: 1

Instrument :
 ECD_L
 ClientSampled :
 NB-07-122018-B

Integration File signal 1: autoint1.e
 Integration File signal 2: autoint2.e
 Quant Time: Dec 21 22:36:21 2018
 Quant Method : Z:\pestpcbsrv\HPCHEM1\ECD_L\methods\PL120618.M
 Quant Title : GC Extractables
 QLast Update : Fri Dec 07 00:20:08 2018
 Response via : Initial Calibration
 Integrator: ChemStation

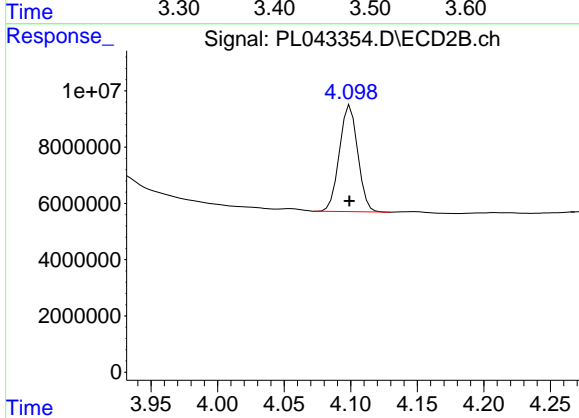
Volume Inj. : 2 µl
 Signal #1 Phase : ZB-MR1 Signal #2 Phase: ZB-MR2
 Signal #1 Info : 30M x 0.32mm x0.5 Signal #2 Info : 30M x 0.32mm x0.25µm



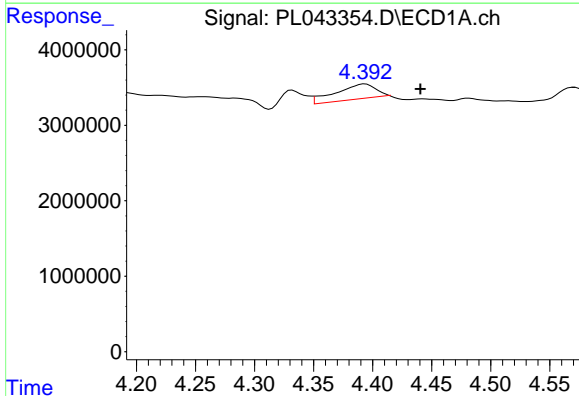


#1 Tetrachloro-m-xylene
 R.T.: 3.464 min
 Delta R.T.: 0.000 min
 Response: 65059321
 Conc: 10.61 ng/ml

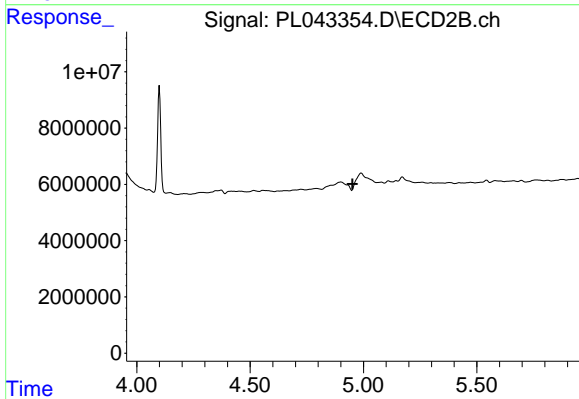
Instrument :
 ECD_L
 ClientSampleId :
 NB-07-122018-B



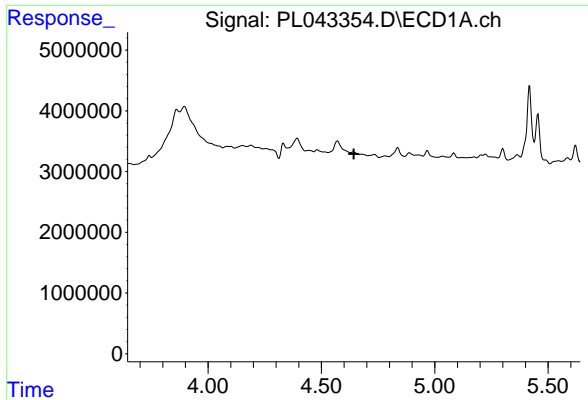
#1 Tetrachloro-m-xylene
 R.T.: 4.100 min
 Delta R.T.: 0.000 min
 Response: 36376415
 Conc: 12.27 ng/ml



#6 beta-BHC
 R.T.: 4.394 min
 Delta R.T.: -0.047 min
 Response: 4626160
 Conc: 1.25 ng/ml

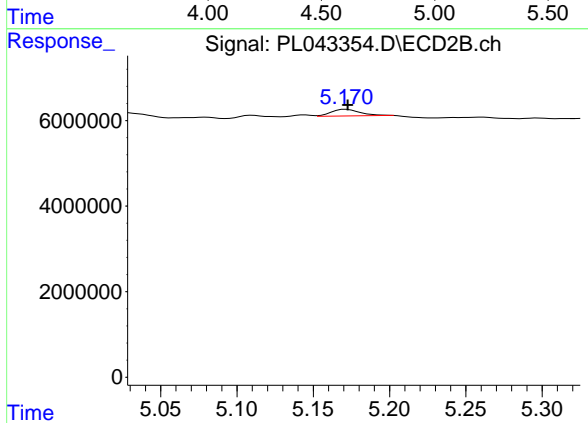


#6 beta-BHC
 R.T.: 0.000 min
 Exp R.T. : 4.952 min
 Response: 0
 Conc: N.D.

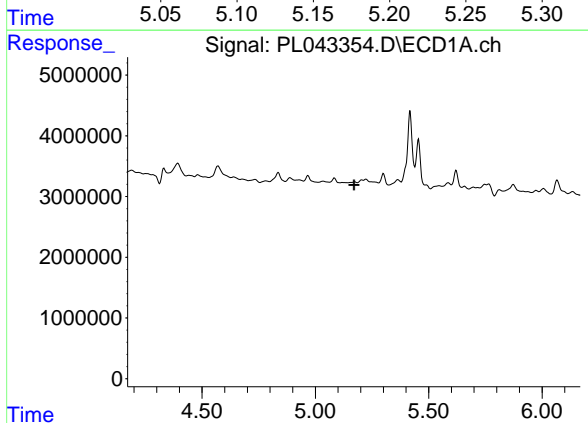


#7 delta-BHC
 R.T.: 0.000 min
 Exp R.T. : 4.643 min
 Response: 0
 Conc: N.D.

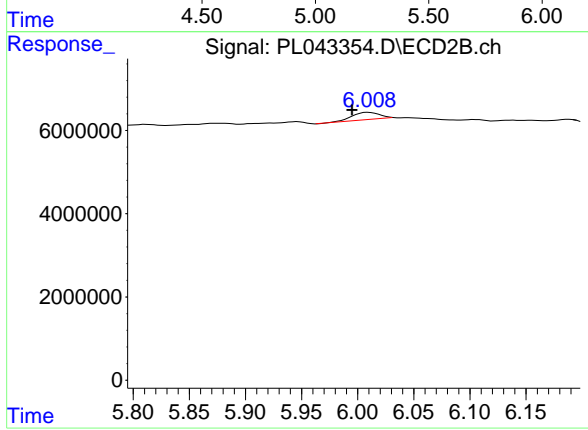
Instrument :
 ECD_L
 ClientSampleId :
 NB-07-122018-B



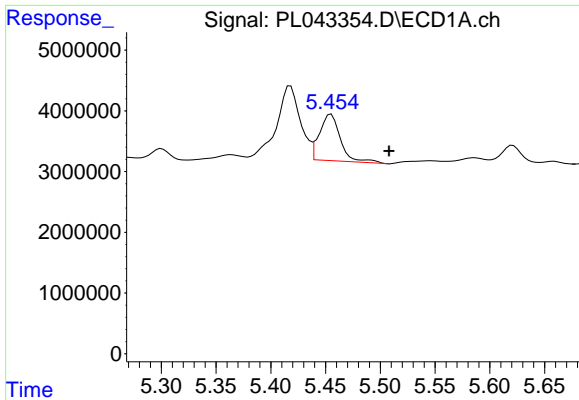
#7 delta-BHC
 R.T.: 5.172 min
 Delta R.T.: -0.001 min
 Response: 2076152
 Conc: 0.48 ng/ml



#8 Heptachlor epoxide
 R.T.: 0.000 min
 Exp R.T. : 5.171 min
 Response: 0
 Conc: N.D.

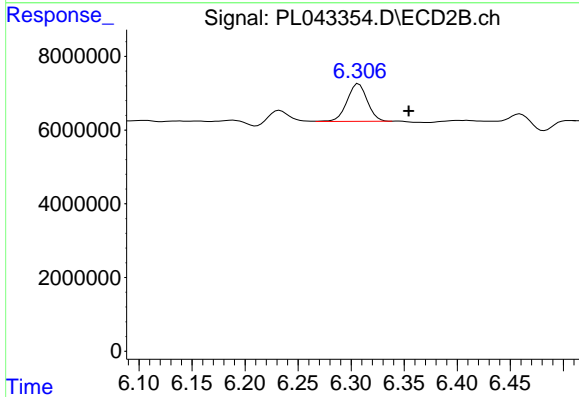


#8 Heptachlor epoxide
 R.T.: 6.010 min
 Delta R.T.: 0.015 min
 Response: 3162201
 Conc: 0.83 ng/ml

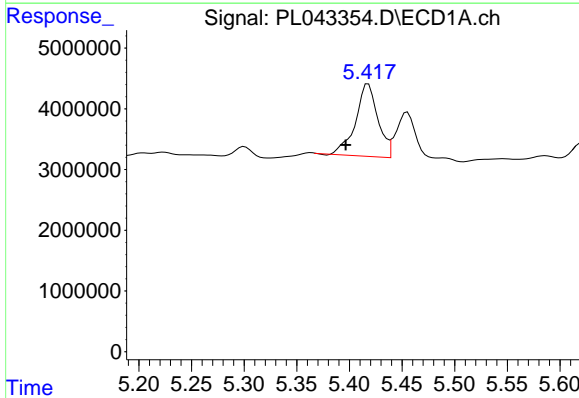


#9 Endosulfan I
 R.T.: 5.455 min
 Delta R.T.: -0.053 min
 Response: 10215760
 Conc: 1.39 ng/ml

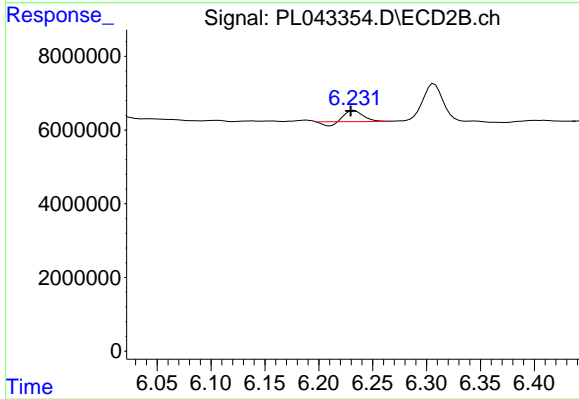
Instrument :
 ECD_L
 ClientSampleId :
 NB-07-122018-B



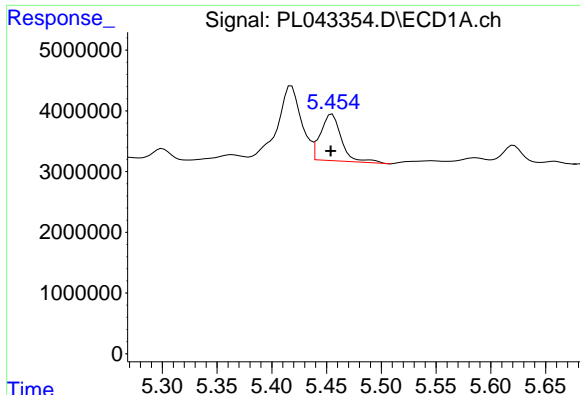
#9 Endosulfan I
 R.T.: 6.307 min
 Delta R.T.: -0.047 min
 Response: 13552852
 Conc: 3.99 ng/ml



#10 gamma-Chlordane
 R.T.: 5.418 min
 Delta R.T.: 0.021 min
 Response: 17624121
 Conc: 2.19 ng/ml

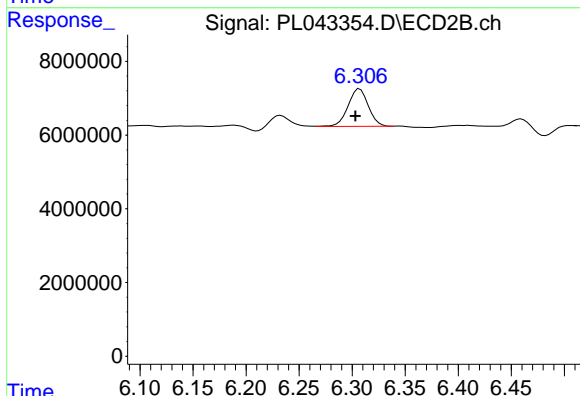


#10 gamma-Chlordane
 R.T.: 6.233 min
 Delta R.T.: 0.003 min
 Response: 3102154
 Conc: 0.84 ng/ml

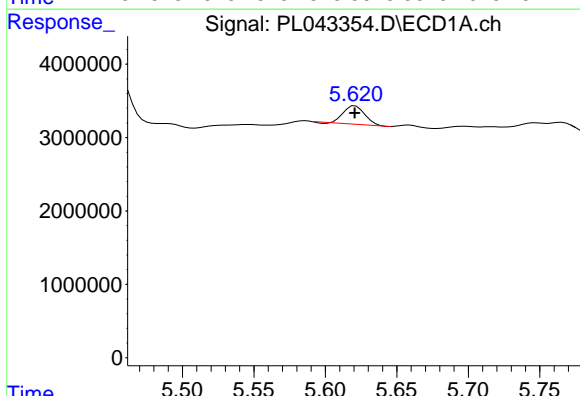


#11 alpha-Chlordane
 R.T.: 5.455 min
 Delta R.T.: 0.001 min
 Response: 10215760
 Conc: 1.29 ng/ml

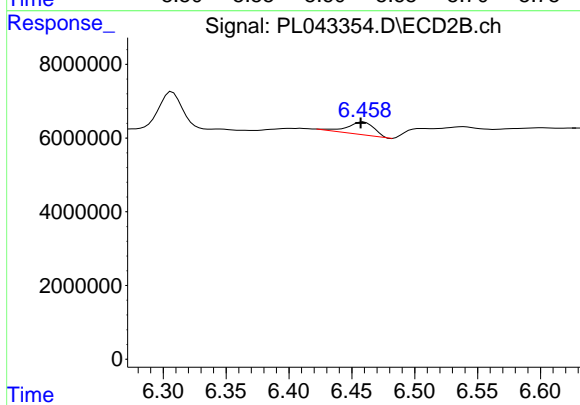
Instrument :
 ECD_L
 ClientSampleId :
 NB-07-122018-B



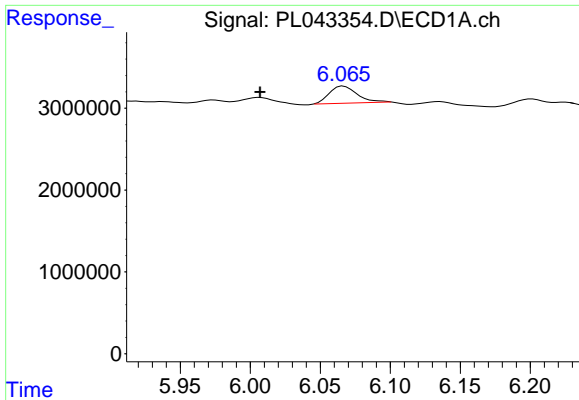
#11 alpha-Chlordane
 R.T.: 6.307 min
 Delta R.T.: 0.004 min
 Response: 13552852
 Conc: 3.77 ng/ml



#12 4,4'-DDE
 R.T.: 5.621 min
 Delta R.T.: 0.000 min
 Response: 2599119
 Conc: 0.38 ng/ml

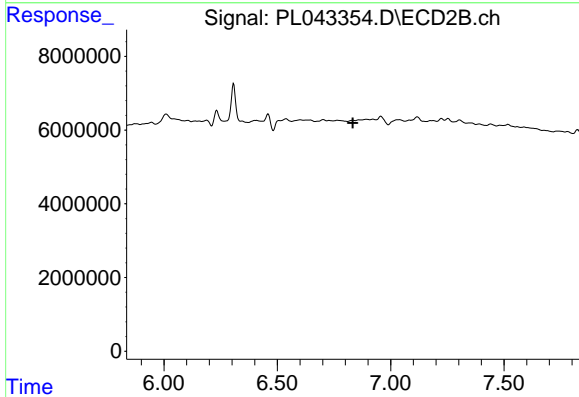


#12 4,4'-DDE
 R.T.: 6.459 min
 Delta R.T.: 0.002 min
 Response: 5217812
 Conc: 1.44 ng/ml

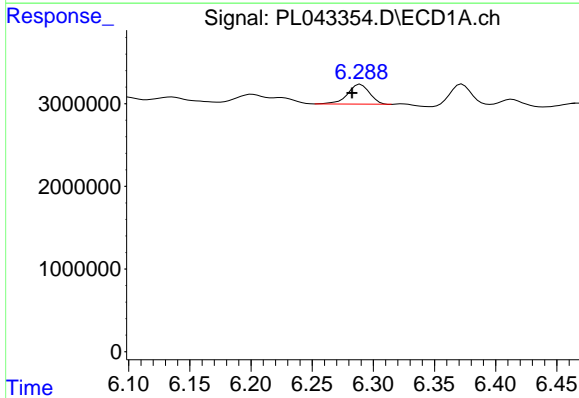


#14 Endrin
 R.T.: 6.067 min
 Delta R.T.: 0.059 min
 Response: 2934347
 Conc: 0.41 ng/ml

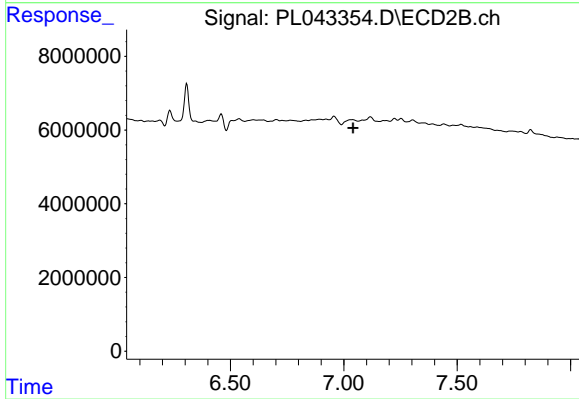
Instrument :
 ECD_L
 ClientSampleId :
 NB-07-122018-B



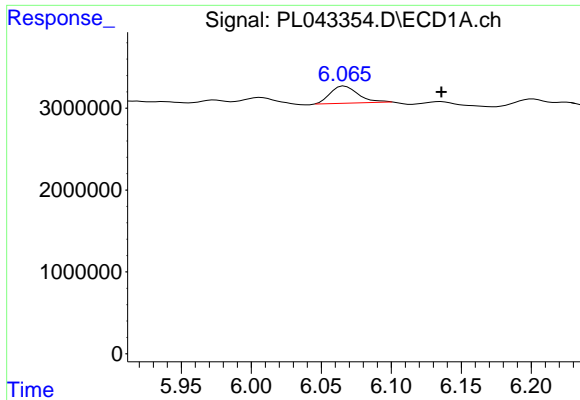
#14 Endrin
 R.T.: 0.000 min
 Exp R.T. : 6.832 min
 Response: 0
 Conc: N.D.



#15 Endosulfan II
 R.T.: 6.290 min
 Delta R.T.: 0.007 min
 Response: 3004145
 Conc: 0.45 ng/ml

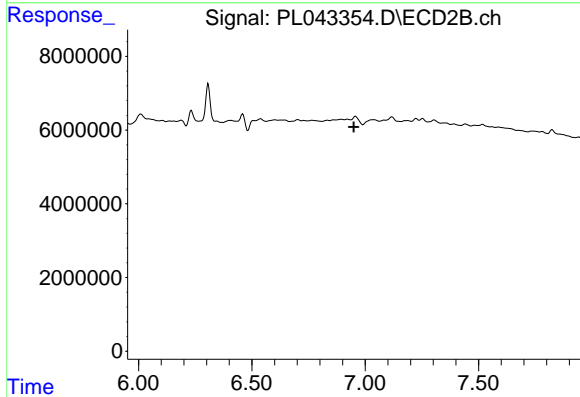


#15 Endosulfan II
 R.T.: 0.000 min
 Exp R.T. : 7.041 min
 Response: 0
 Conc: N.D.

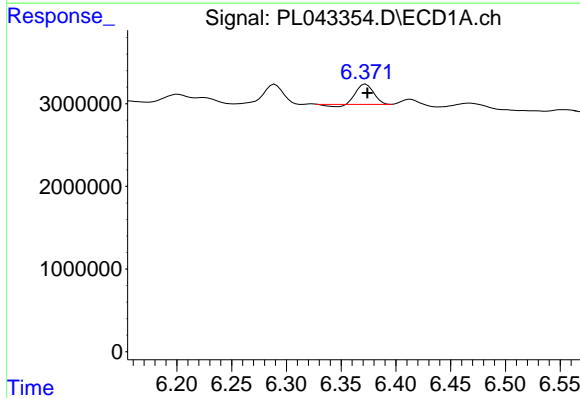


#16 4,4'-DDD
 R.T.: 6.067 min
 Delta R.T.: -0.069 min
 Response: 2934347
 Conc: 0.52 ng/ml

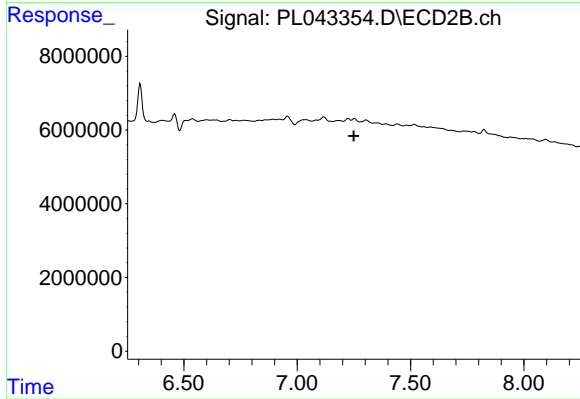
Instrument :
 ECD_L
ClientSampleId :
 NB-07-122018-B



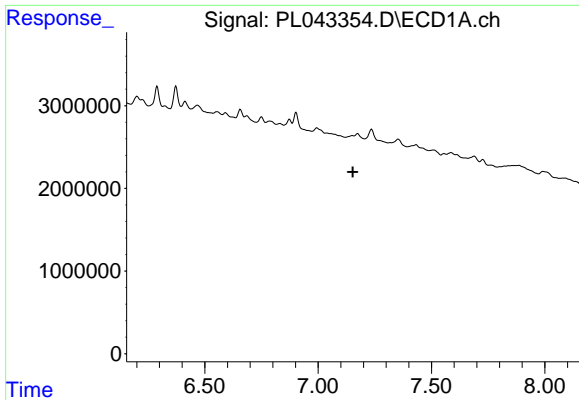
#16 4,4'-DDD
 R.T.: 0.000 min
 Exp R.T. : 6.949 min
 Response: 0
 Conc: N.D.



#17 4,4'-DDT
 R.T.: 6.373 min
 Delta R.T.: -0.001 min
 Response: 2540363
 Conc: 0.43 ng/ml



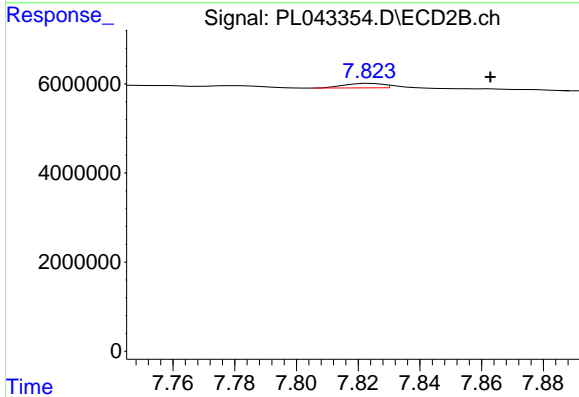
#17 4,4'-DDT
 R.T.: 0.000 min
 Exp R.T. : 7.249 min
 Response: 0
 Conc: N.D.



#21 Endrin ketone

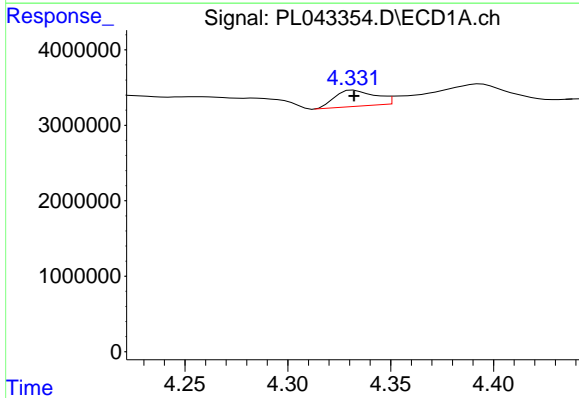
R.T.: 0.000 min
 Exp R.T.: 7.153 min
 Response: 0
 Conc: N.D.

Instrument :
 ECD_L
 ClientSampleId :
 NB-07-122018-B



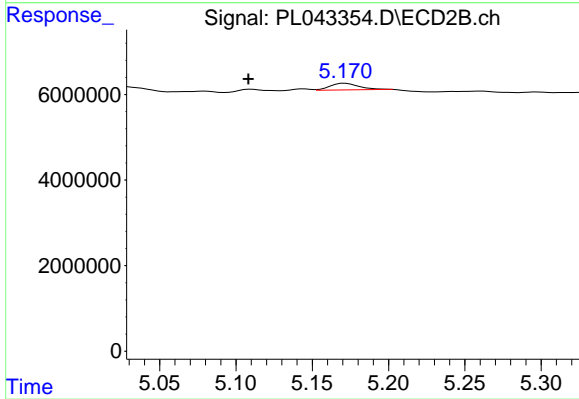
#21 Endrin ketone

R.T.: 7.824 min
 Delta R.T.: -0.039 min
 Response: 864927
 Conc: 0.28 ng/ml



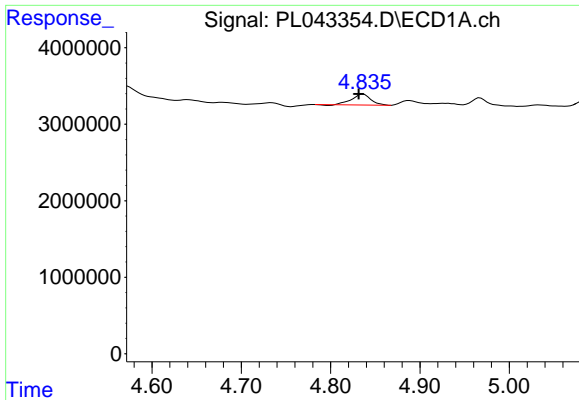
#23 Chlordane-1

R.T.: 4.332 min
 Delta R.T.: 0.000 min
 Response: 2891706
 Conc: 10.76 ng/ml



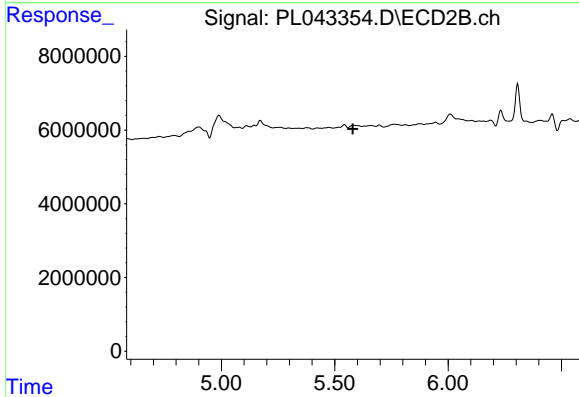
#23 Chlordane-1

R.T.: 5.172 min
 Delta R.T.: 0.063 min
 Response: 2076152
 Conc: 14.69 ng/ml

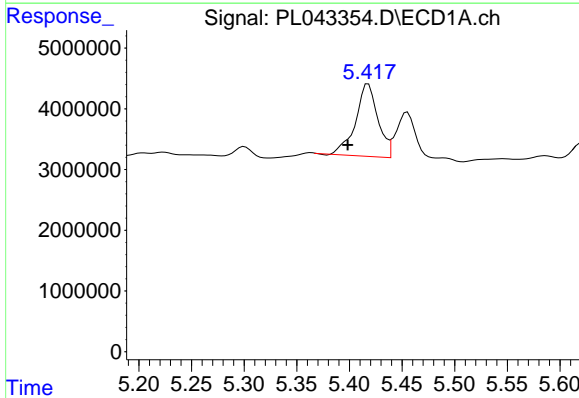


#24 Chlordane-2
 R.T.: 4.836 min
 Delta R.T.: 0.005 min
 Response: 2091999
 Conc: 7.29 ng/ml

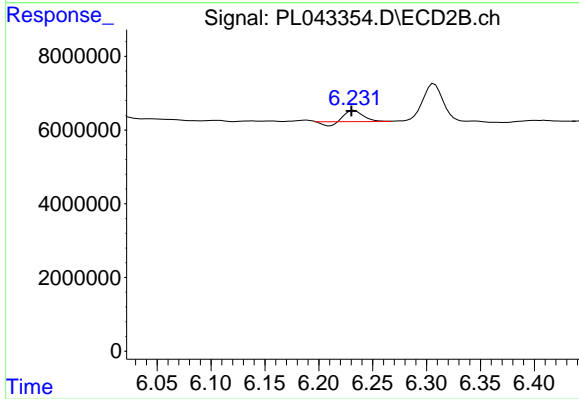
Instrument :
 ECD_L
 ClientSampleId :
 NB-07-122018-B



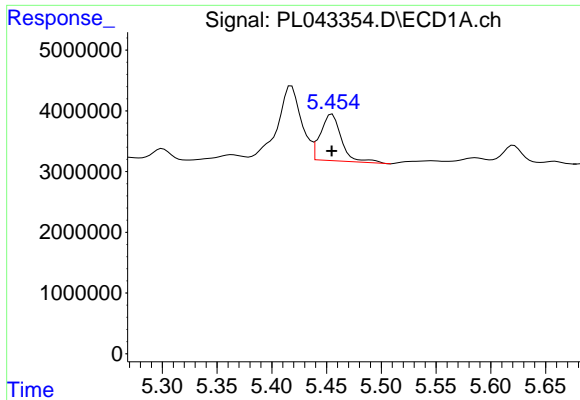
#24 Chlordane-2
 R.T.: 0.000 min
 Exp R.T. : 5.579 min
 Response: 0
 Conc: N.D.



#25 Chlordane-3
 R.T.: 5.418 min
 Delta R.T.: 0.020 min
 Response: 17624121
 Conc: 21.21 ng/ml

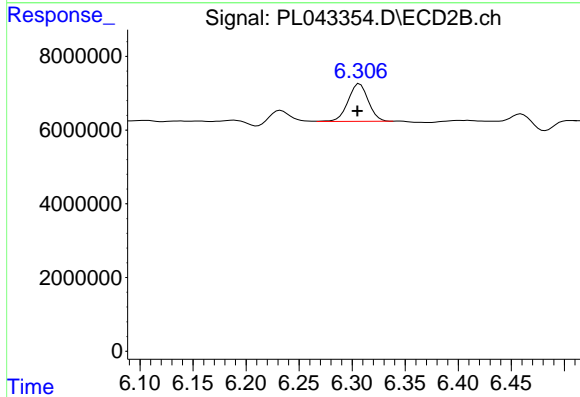


#25 Chlordane-3
 R.T.: 6.233 min
 Delta R.T.: 0.003 min
 Response: 3102154
 Conc: 6.32 ng/ml

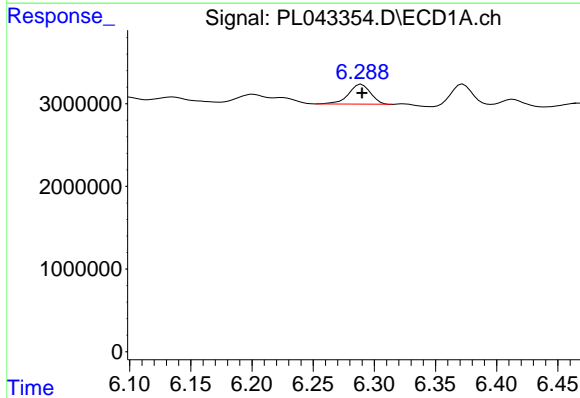


#26 Chlordane-4
 R.T.: 5.455 min
 Delta R.T.: 0.000 min
 Response: 10215760
 Conc: 13.51 ng/ml

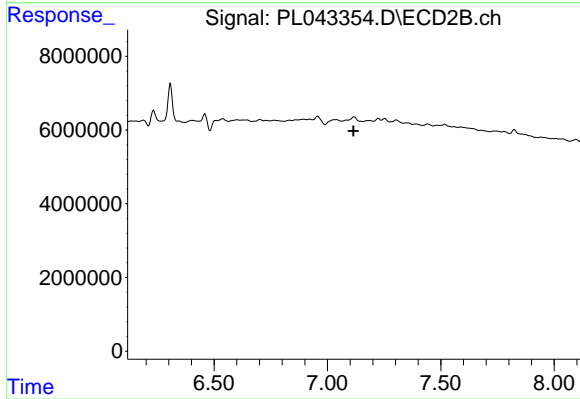
Instrument :
 ECD_L
 ClientSampleId :
 NB-07-122018-B



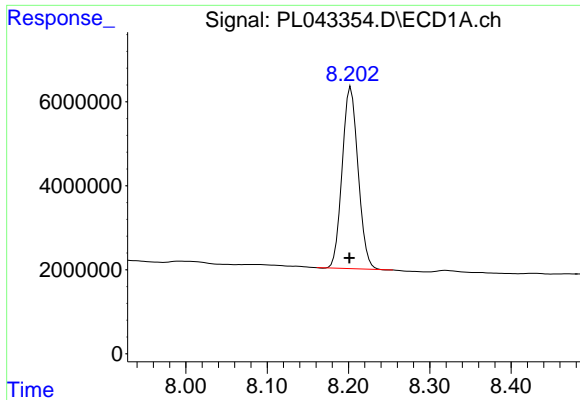
#26 Chlordane-4
 R.T.: 6.307 min
 Delta R.T.: 0.002 min
 Response: 13552852
 Conc: 23.75 ng/ml



#27 Chlordane-5
 R.T.: 6.290 min
 Delta R.T.: 0.000 min
 Response: 3004145
 Conc: 12.52 ng/ml



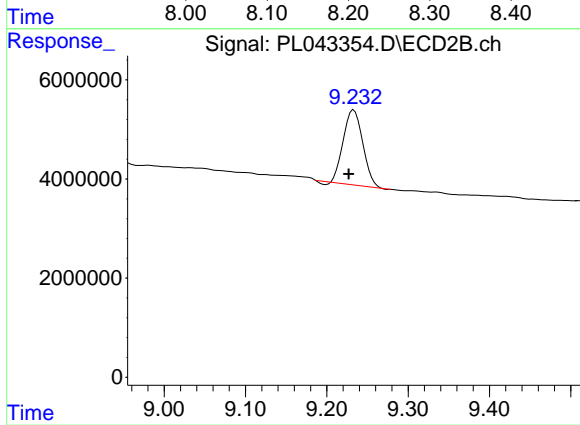
#27 Chlordane-5
 R.T.: 0.000 min
 Exp R.T.: 7.115 min
 Response: 0
 Conc: N.D.



#28 Decachlorobiphenyl

R.T.: 8.203 min
Delta R.T.: 0.002 min
Response: 58557780
Conc: 8.97 ng/ml

Instrument :
ECD_L
ClientSampleId :
NB-07-122018-B



#28 Decachlorobiphenyl

R.T.: 9.233 min
Delta R.T.: 0.006 min
Response: 24913540
Conc: 9.55 ng/ml