

Data Path : Z:\pestpcbsrv\HPCHEM1\ECD\_L\Data\PL122121\  
 Data File : PL071559.D  
 Signal(s) : Signal #1: ECD1A.ch Signal #2: ECD2B.ch  
 Acq On : 21 Dec 2021 17:11  
 Operator : AR\AJ  
 Sample : PSTDCCC050  
 Misc :  
 ALS Vial : 4 Sample Multiplier: 1

**Instrument :**

ECD\_L

**ClientSampleId :**

PSTDCCC050

**Manual Integrations**

**APPROVED**

Reviewed By :Abdul Mirza 12/22/2021

Supervised By :mohammad ahmed 12/22/2021

Integration File signal 1: autoint1.e  
 Integration File signal 2: autoint2.e  
 Quant Time: Dec 22 00:35:07 2021  
 Quant Method : Z:\pestpcbsrv\HPCHEM1\ECD\_L\methods\PL121421.M  
 Quant Title : GC Extractables  
 QLast Update : Tue Dec 14 14:29:34 2021  
 Response via : Initial Calibration  
 Integrator: ChemStation

Volume Inj. : 1 µl  
 Signal #1 Phase : ZB-MR2 Signal #2 Phase: ZB-MR1  
 Signal #1 Info : 30M x 0.32mm x0.2 Signal #2 Info : 30M x 0.32mm x0.5µm

Compound	RT#1	RT#2	Resp#1	Resp#2	ng/ml	ng/ml
-----						
System Monitoring Compounds						
1) SA Tetrachlo...	4.562	5.498	21953740	56322701	46.316	47.278
28) SA Decachlor...	10.323	11.391	29796679	53311596	44.848	49.068
Target Compounds						
2) A alpha-BHC	5.268	6.079	31417044	83189088	49.400	48.374
3) MA gamma-BHC...	5.691	6.475	30656843	77484677	46.916	48.546
4) MA Heptachlor	6.097	7.121	33997275	78850289	49.212	49.398
5) MB Aldrin	6.421	7.491	30058950	71387215	48.815	48.877
6) B beta-BHC	6.075	6.733	14287334	35673657	50.034	44.567
7) B delta-BHC	6.333	6.999	30886595	74788752	49.385	48.947
8) B Heptachlo...	6.998	7.958	29792975	66224471	48.677	49.369
9) A Endosulfan I	7.401	8.363	28390446	60450719	48.902	50.366
10) B gamma-Chl...	7.275	8.227	30371001	65359882	48.929	50.548m
11) B alpha-Chl...	7.345	8.308	30465596	64480633	48.845	50.750
12) B 4,4'-DDE	7.560	8.498	27327382	61703259	50.074	51.801
13) MA Dieldrin	7.687	8.652	28742863	60877974	49.082	50.072
14) MA Endrin	7.978	8.891	26313240	51181055	48.042	50.519
15) B Endosulfa...	8.290	9.127	26106721	52255046	47.900	51.782
16) A 4,4'-DDD	8.145	9.038	23237849	47352658	49.372m	53.645
17) MA 4,4'-DDT	8.407	9.355	24082980	49813840	47.190	50.375
18) B Endrin al...	8.479	9.262	19351172	36817221	45.505	48.877
19) B Endosulfa...	8.709	9.499	25796618	49815093	44.933	50.827
20) A Methoxychlor	9.002	9.842	15004150	23391562	46.324	46.599
21) B Endrin ke...	9.227	9.996	31909541	52994539	48.381	50.395
22) Mirex	9.410	10.459	26902858	37682064	46.370	46.818

(f)=RT Delta > 1/2 Window (#)=Amounts differ by > 25% (m)=manual int.

Data Path : Z:\pestpcbsrv\HPCHEM1\ECD\_L\Data\PL122121\  
 Data File : PL071559.D  
 Signal(s) : Signal #1: ECD1A.ch Signal #2: ECD2B.ch  
 Acq On : 21 Dec 2021 17:11  
 Operator : AR\AJ  
 Sample : PSTDCCC050  
 Misc :  
 ALS Vial : 4 Sample Multiplier: 1

Instrument :

ECD\_L

ClientSampleId :

PSTDCCC050

Manual Integrations

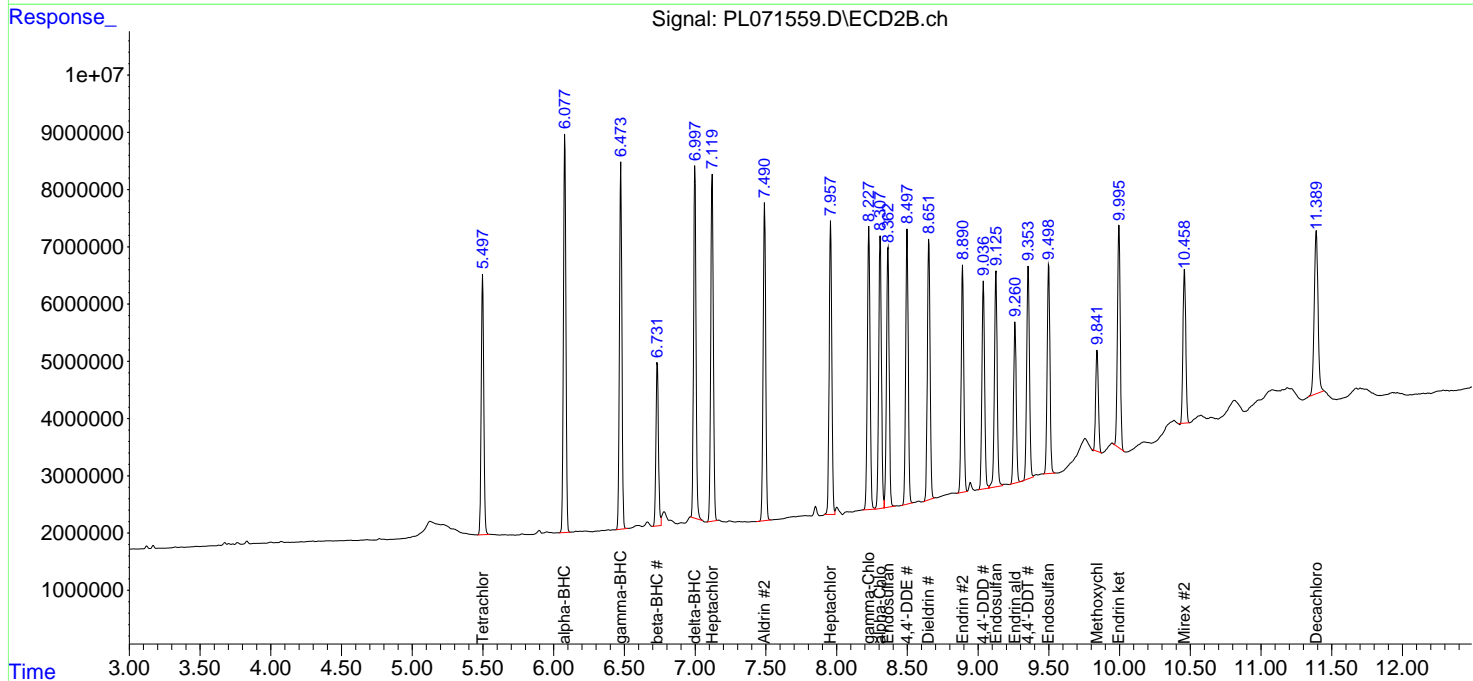
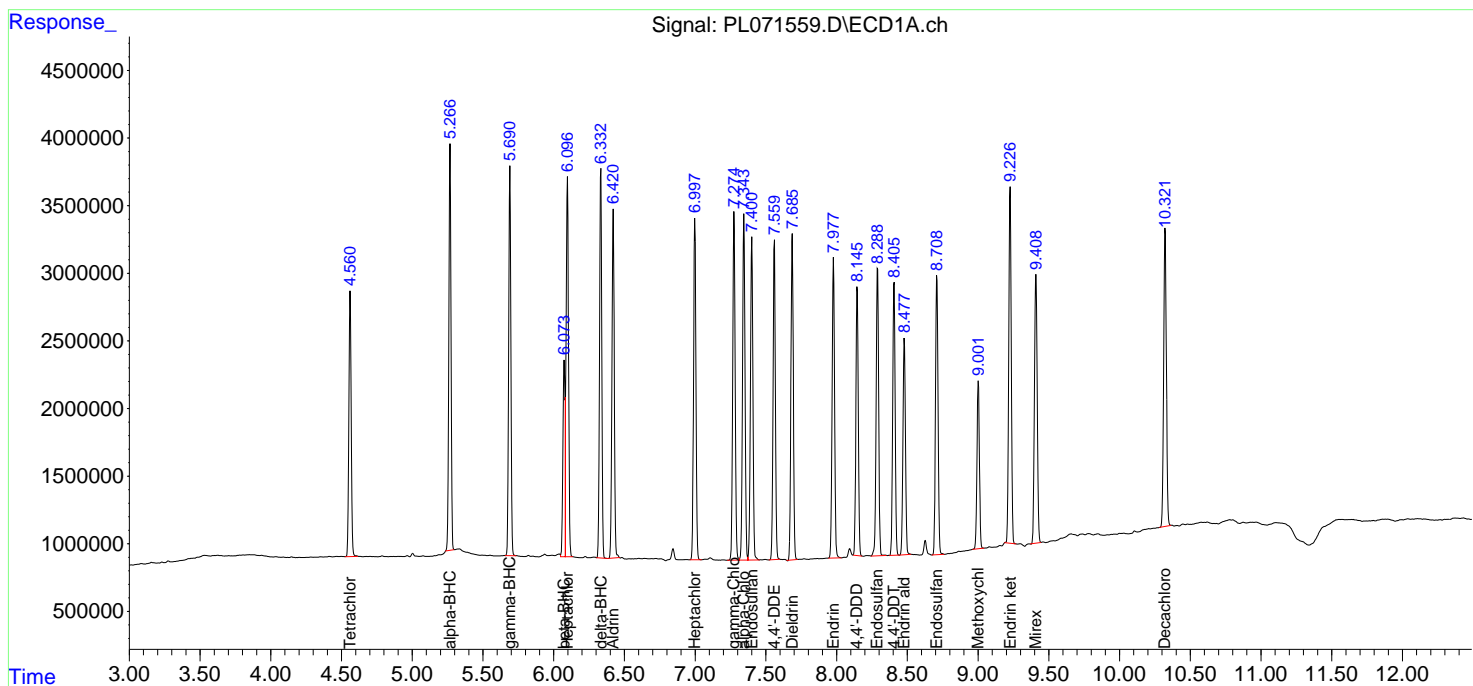
APPROVED

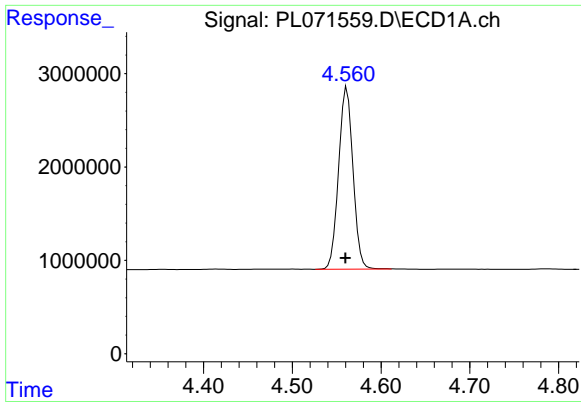
Reviewed By :Abdul Mirza 12/22/2021

Supervised By :mohammad ahmed 12/22/2021

Integration File signal 1: autoint1.e  
 Integration File signal 2: autoint2.e  
 Quant Time: Dec 22 00:35:07 2021  
 Quant Method : Z:\pestpcbsrv\HPCHEM1\ECD\_L\methods\PL121421.M  
 Quant Title : GC Extractables  
 QLast Update : Tue Dec 14 14:29:34 2021  
 Response via : Initial Calibration  
 Integrator: ChemStation

Volume Inj. : 1 µl  
 Signal #1 Phase : ZB-MR2 Signal #2 Phase: ZB-MR1  
 Signal #1 Info : 30M x 0.32mm x0.2 Signal #2 Info : 30M x 0.32mm x0.5µm



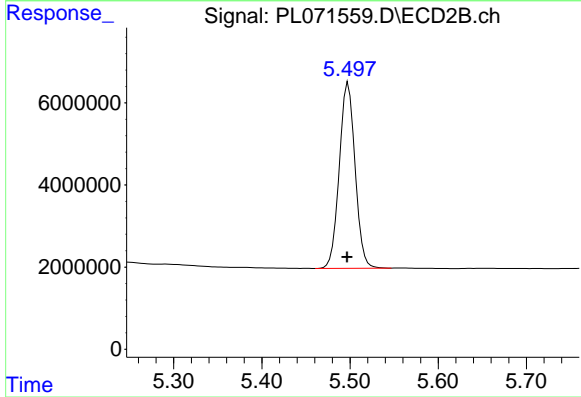


#1 Tetrachloro-m-xylene  
 R.T.: 4.562 min  
 Delta R.T.: 0.002 min  
 Response: 21953740  
 Conc: 46.32 ng/ml

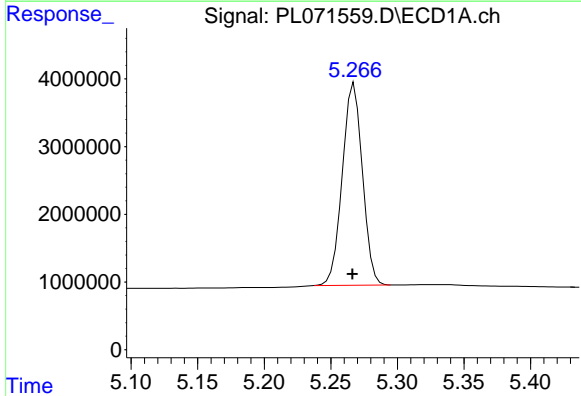
Instrument :  
 ECD\_L  
 ClientSampleId :  
 PSTDCCC050

Manual Integrations  
 APPROVED

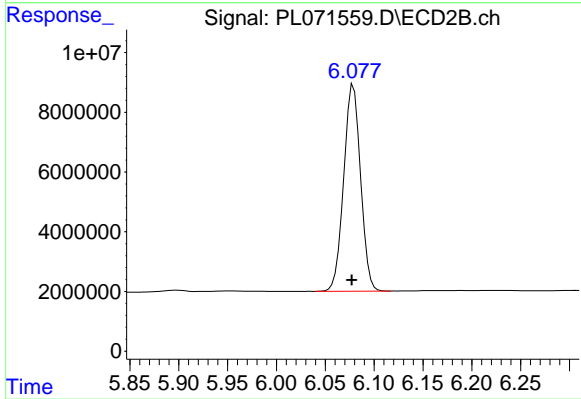
Reviewed By :Abdul Mirza 12/22/2021  
 Supervised By :mohammad ahmed 12/22/2021



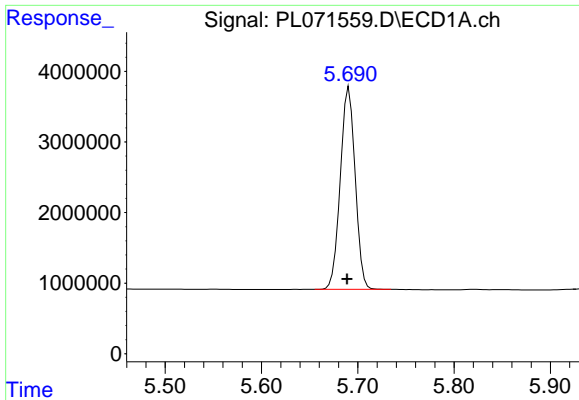
#1 Tetrachloro-m-xylene  
 R.T.: 5.498 min  
 Delta R.T.: 0.002 min  
 Response: 56322701  
 Conc: 47.28 ng/ml



#2 alpha-BHC  
 R.T.: 5.268 min  
 Delta R.T.: 0.001 min  
 Response: 31417044  
 Conc: 49.40 ng/ml



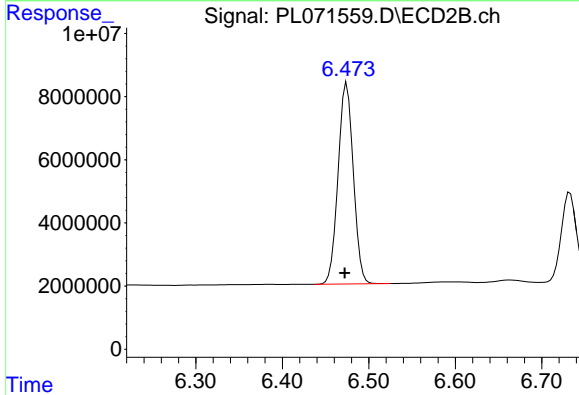
#2 alpha-BHC  
 R.T.: 6.079 min  
 Delta R.T.: 0.002 min  
 Response: 83189088  
 Conc: 48.37 ng/ml



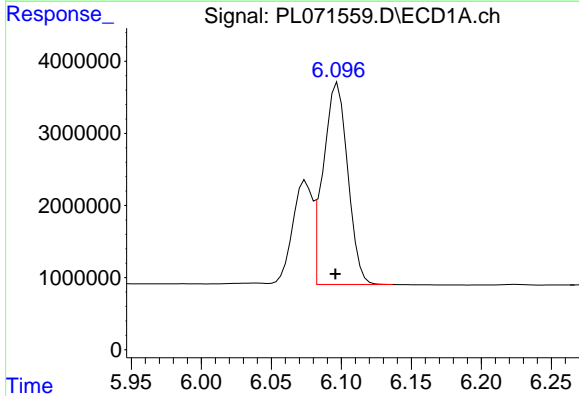
#3 gamma-BHC (Lindane)  
 R.T.: 5.691 min  
 Delta R.T.: 0.002 min  
 Response: 30656843  
 Conc: 46.92 ng/ml

Instrument : ECD\_L  
 ClientSampleId : PSTDCCC050

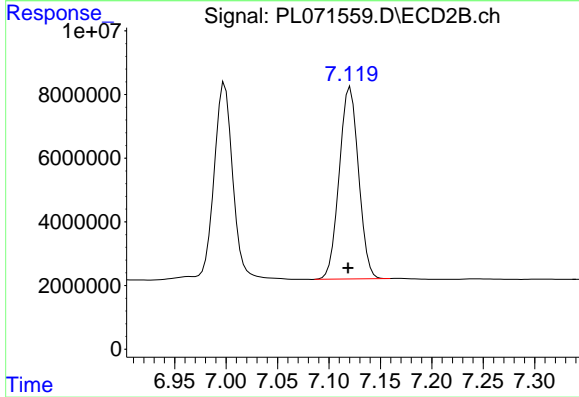
Manual Integrations  
**APPROVED**  
 Reviewed By :Abdul Mirza 12/22/2021  
 Supervised By :mohammad ahmed 12/22/2021



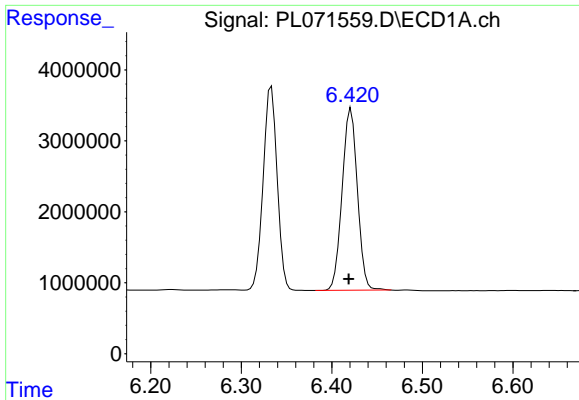
#3 gamma-BHC (Lindane)  
 R.T.: 6.475 min  
 Delta R.T.: 0.002 min  
 Response: 77484677  
 Conc: 48.55 ng/ml



#4 Heptachlor  
 R.T.: 6.097 min  
 Delta R.T.: 0.002 min  
 Response: 33997275  
 Conc: 49.21 ng/ml



#4 Heptachlor  
 R.T.: 7.121 min  
 Delta R.T.: 0.002 min  
 Response: 78850289  
 Conc: 49.40 ng/ml

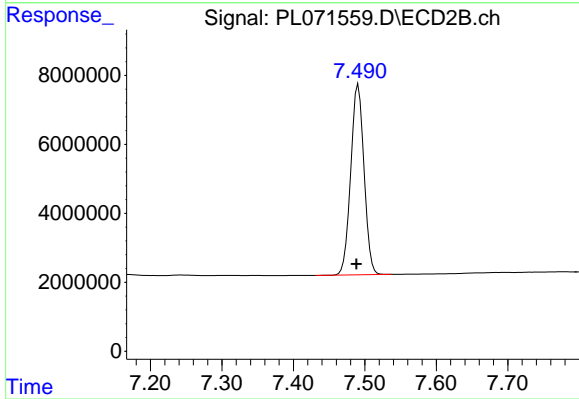


#5 Aldrin  
 R.T.: 6.421 min  
 Delta R.T.: 0.002 min  
 Response: 30058950  
 Conc: 48.81 ng/ml

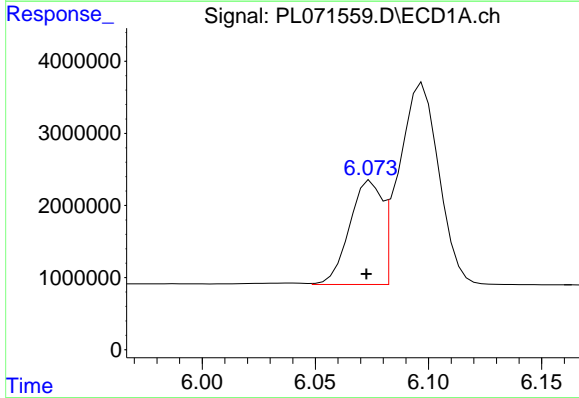
Instrument :  
 ECD\_L  
 ClientSampleId :  
 PSTDCCC050

Manual Integrations  
 APPROVED

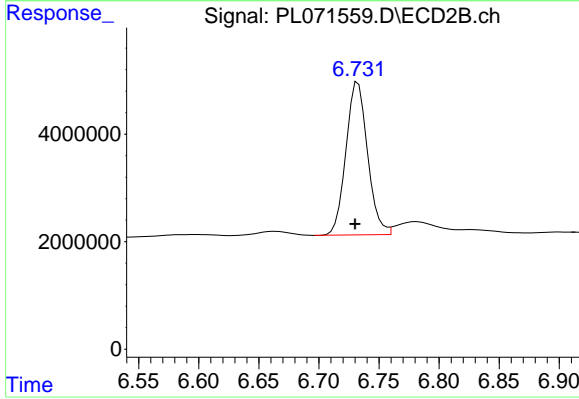
Reviewed By :Abdul Mirza 12/22/2021  
 Supervised By :mohammad ahmed 12/22/2021



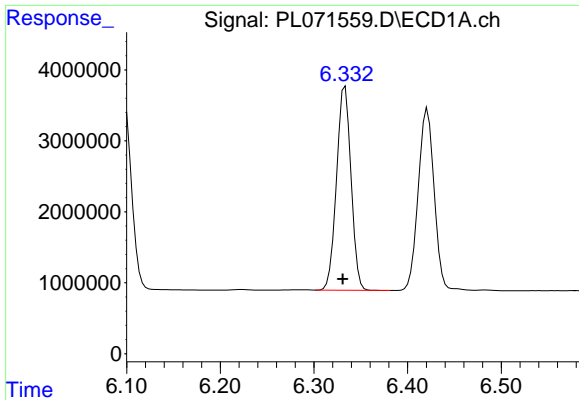
#5 Aldrin  
 R.T.: 7.491 min  
 Delta R.T.: 0.003 min  
 Response: 71387215  
 Conc: 48.88 ng/ml



#6 beta-BHC  
 R.T.: 6.075 min  
 Delta R.T.: 0.002 min  
 Response: 14287334  
 Conc: 50.03 ng/ml



#6 beta-BHC  
 R.T.: 6.733 min  
 Delta R.T.: 0.003 min  
 Response: 35673657  
 Conc: 44.57 ng/ml



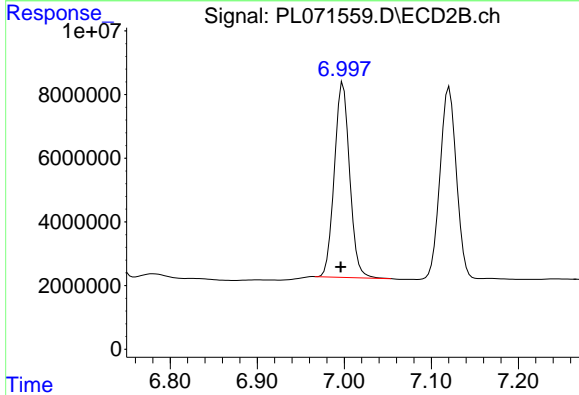
#7 delta-BHC

R.T.: 6.333 min  
 Delta R.T.: 0.003 min  
 Response: 30886595  
 Conc: 49.38 ng/ml

Instrument :  
 ECD\_L  
 ClientSampleId :  
 PSTDCCC050

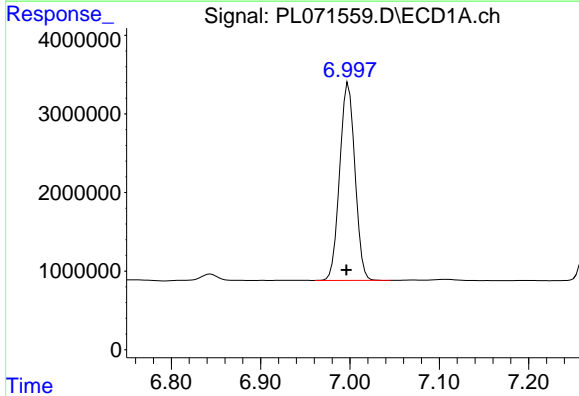
Manual Integrations  
 APPROVED

Reviewed By :Abdul Mirza 12/22/2021  
 Supervised By :mohammad ahmed 12/22/2021



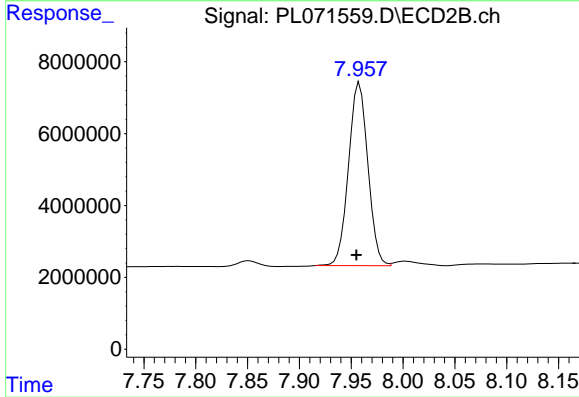
#7 delta-BHC

R.T.: 6.999 min  
 Delta R.T.: 0.003 min  
 Response: 74788752  
 Conc: 48.95 ng/ml



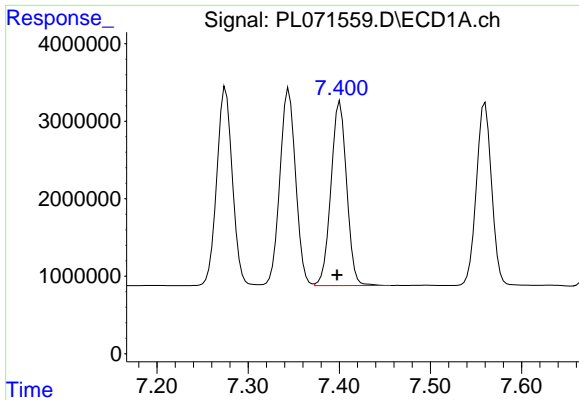
#8 Heptachlor epoxide

R.T.: 6.998 min  
 Delta R.T.: 0.002 min  
 Response: 29792975  
 Conc: 48.68 ng/ml



#8 Heptachlor epoxide

R.T.: 7.958 min  
 Delta R.T.: 0.003 min  
 Response: 66224471  
 Conc: 49.37 ng/ml



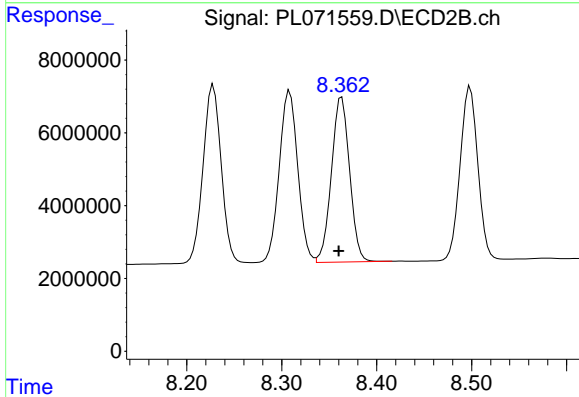
#9 Endosulfan I

R.T.: 7.401 min  
 Delta R.T.: 0.003 min  
 Response: 28390446  
 Conc: 48.90 ng/ml

Instrument :  
 ECD\_L  
 ClientSampleId :  
 PSTDCCC050

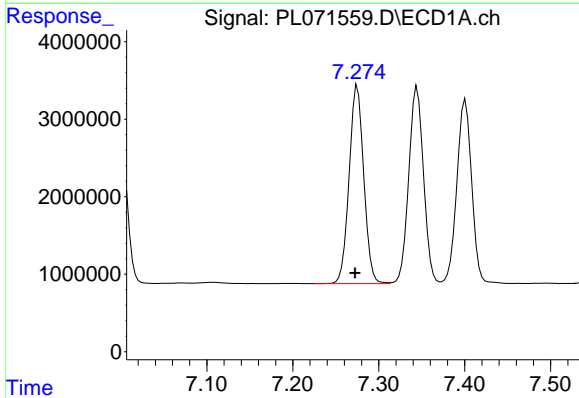
Manual Integrations  
 APPROVED

Reviewed By :Abdul Mirza 12/22/2021  
 Supervised By :mohammad ahmed 12/22/2021



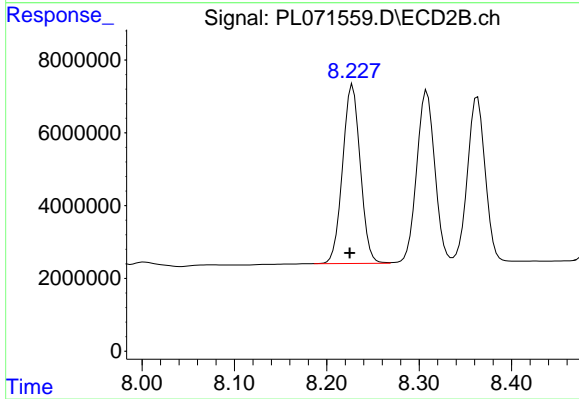
#9 Endosulfan I

R.T.: 8.363 min  
 Delta R.T.: 0.003 min  
 Response: 60450719  
 Conc: 50.37 ng/ml



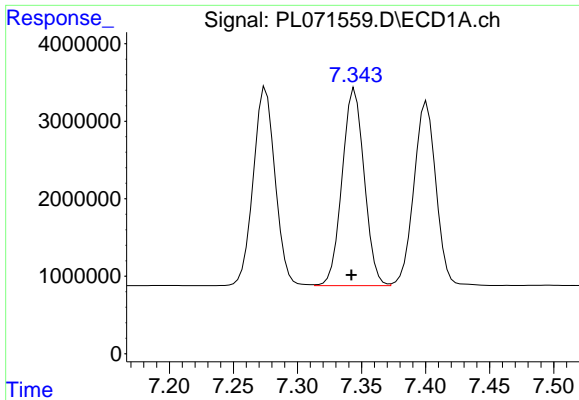
#10 gamma-Chlordane

R.T.: 7.275 min  
 Delta R.T.: 0.003 min  
 Response: 30371001  
 Conc: 48.93 ng/ml



#10 gamma-Chlordane

R.T.: 8.227 min  
 Delta R.T.: 0.002 min  
 Response: 65359882  
 Conc: 50.55 ng/ml m



#11 alpha-Chlordane

R.T.: 7.345 min  
 Delta R.T.: 0.003 min  
 Response: 30465596  
 Conc: 48.85 ng/ml

Instrument :

ECD\_L

ClientSampleId :

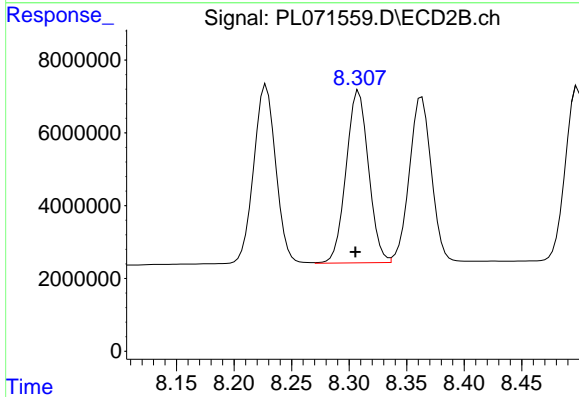
PSTDCCC050

Manual Integrations

APPROVED

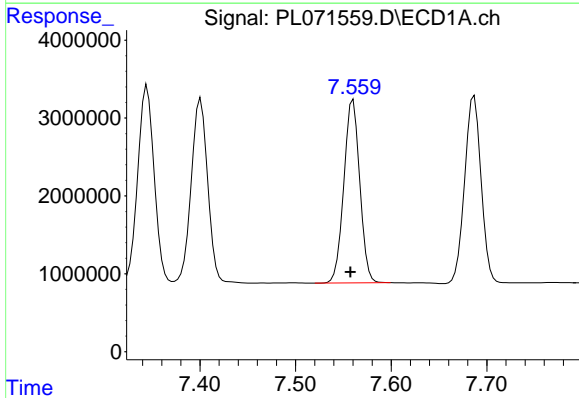
Reviewed By :Abdul Mirza 12/22/2021

Supervised By :mohammad ahmed 12/22/2021



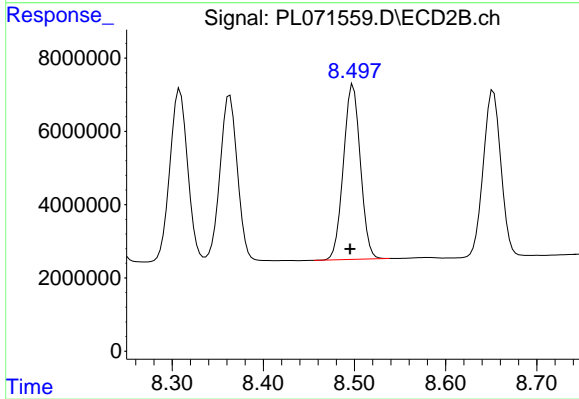
#11 alpha-Chlordane

R.T.: 8.308 min  
 Delta R.T.: 0.003 min  
 Response: 64480633  
 Conc: 50.75 ng/ml



#12 4,4'-DDE

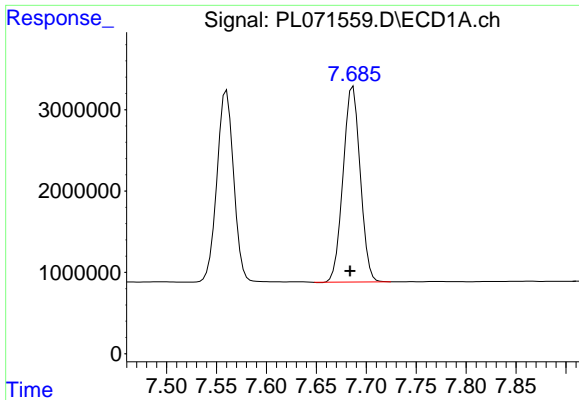
R.T.: 7.560 min  
 Delta R.T.: 0.003 min  
 Response: 27327382  
 Conc: 50.07 ng/ml



#12 4,4'-DDE

R.T.: 8.498 min  
 Delta R.T.: 0.003 min  
 Response: 61703259  
 Conc: 51.80 ng/ml

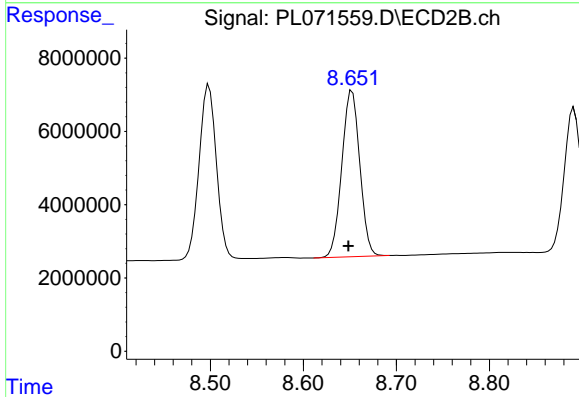




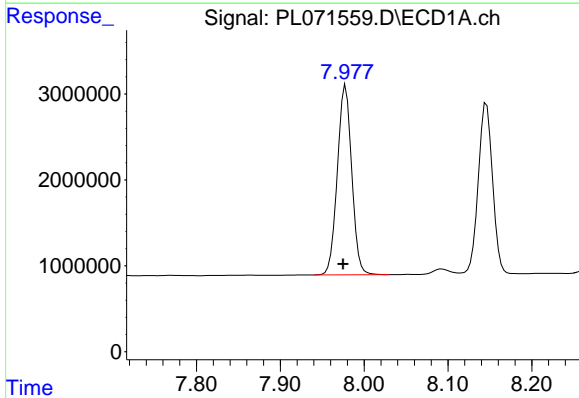
#13 Dieldrin  
 R.T.: 7.687 min  
 Delta R.T.: 0.003 min  
 Response: 28742863  
 Conc: 49.08 ng/ml

Instrument : ECD\_L  
 ClientSampleId : PSTDCCC050

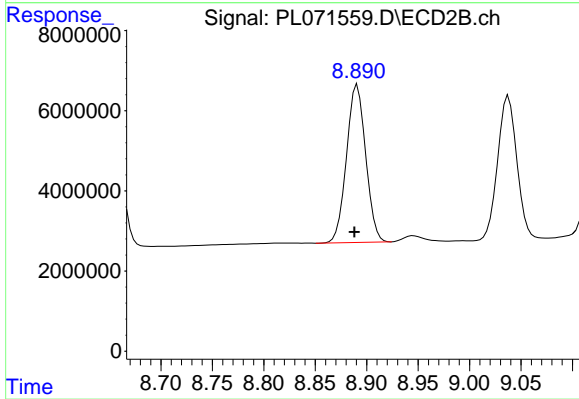
**Manual Integrations**  
**APPROVED**  
 Reviewed By :Abdul Mirza 12/22/2021  
 Supervised By :mohammad ahmed 12/22/2021



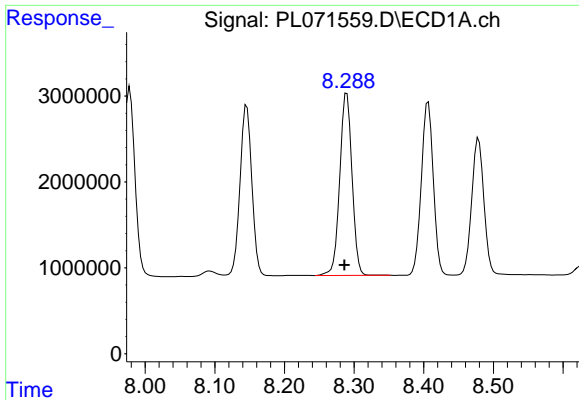
#13 Dieldrin  
 R.T.: 8.652 min  
 Delta R.T.: 0.004 min  
 Response: 60877974  
 Conc: 50.07 ng/ml



#14 Endrin  
 R.T.: 7.978 min  
 Delta R.T.: 0.003 min  
 Response: 26313240  
 Conc: 48.04 ng/ml



#14 Endrin  
 R.T.: 8.891 min  
 Delta R.T.: 0.003 min  
 Response: 51181055  
 Conc: 50.52 ng/ml



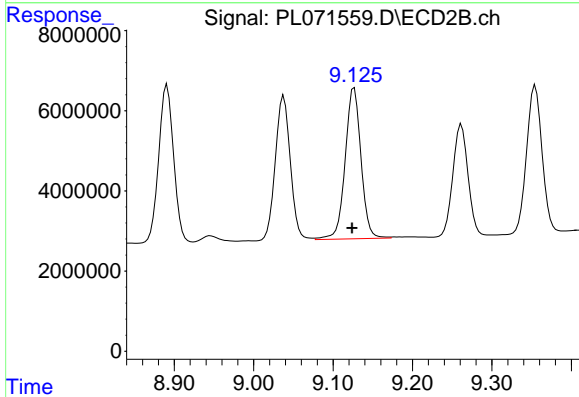
#15 Endosulfan II

R.T.: 8.290 min  
 Delta R.T.: 0.003 min  
 Response: 26106721  
 Conc: 47.90 ng/ml

Instrument :  
 ECD\_L  
 ClientSampleId :  
 PSTDCCC050

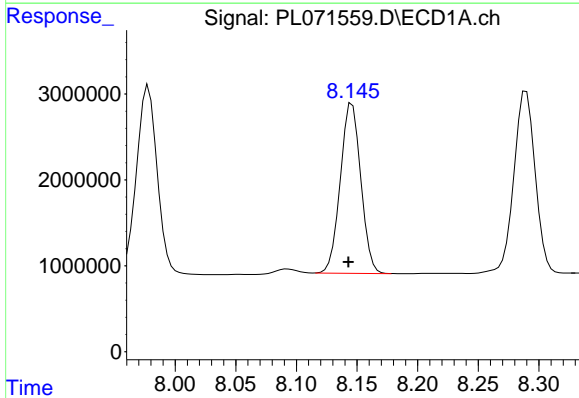
Manual Integrations  
 APPROVED

Reviewed By :Abdul Mirza 12/22/2021  
 Supervised By :mohammad ahmed 12/22/2021



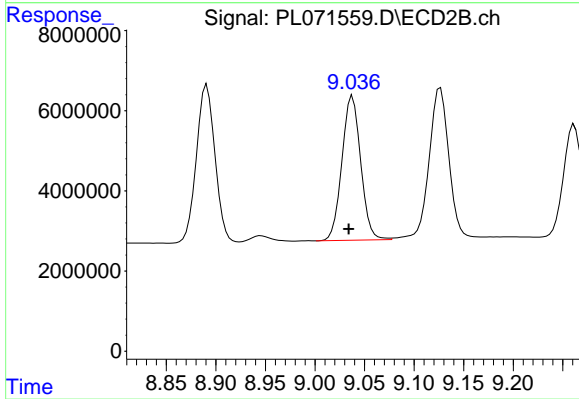
#15 Endosulfan II

R.T.: 9.127 min  
 Delta R.T.: 0.003 min  
 Response: 52255046  
 Conc: 51.78 ng/ml



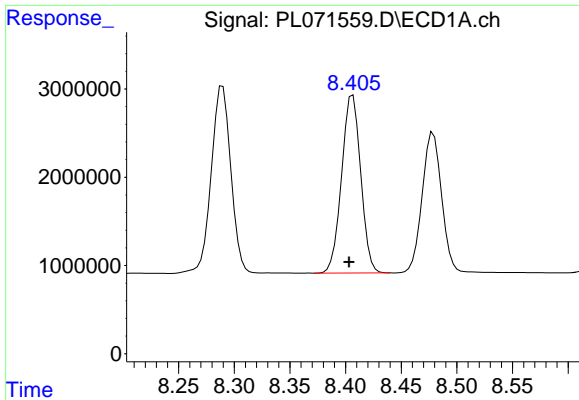
#16 4,4'-DDD

R.T.: 8.145 min  
 Delta R.T.: 0.002 min  
 Response: 23237849  
 Conc: 49.37 ng/ml m



#16 4,4'-DDD

R.T.: 9.038 min  
 Delta R.T.: 0.004 min  
 Response: 47352658  
 Conc: 53.65 ng/ml



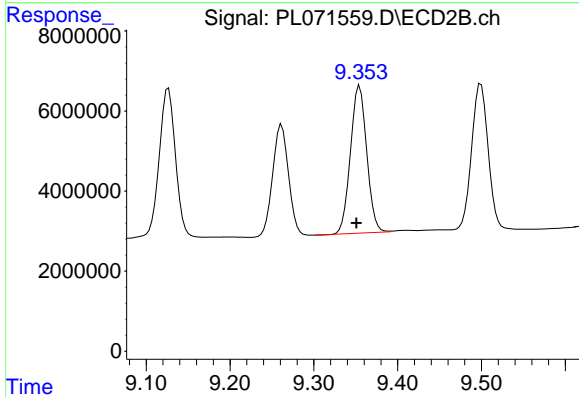
#17 4,4'-DDT

R.T.: 8.407 min  
 Delta R.T.: 0.003 min  
 Response: 24082980  
 Conc: 47.19 ng/ml

Instrument :  
 ECD\_L  
 ClientSampleId :  
 PSTDCCC050

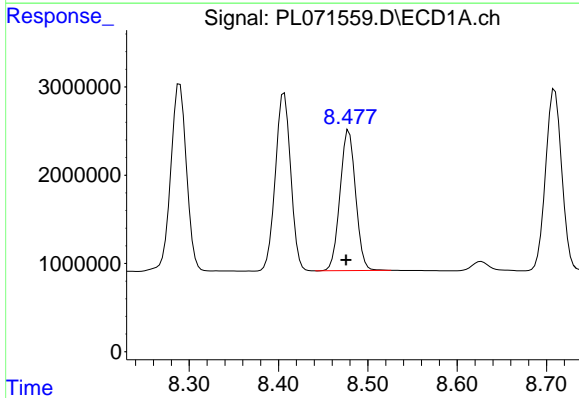
Manual Integrations  
 APPROVED

Reviewed By :Abdul Mirza 12/22/2021  
 Supervised By :mohammad ahmed 12/22/2021



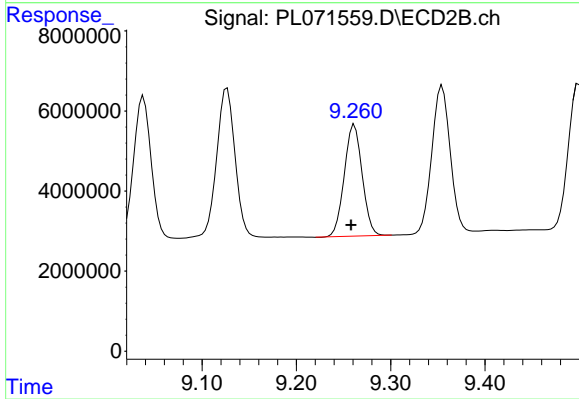
#17 4,4'-DDT

R.T.: 9.355 min  
 Delta R.T.: 0.004 min  
 Response: 49813840  
 Conc: 50.38 ng/ml



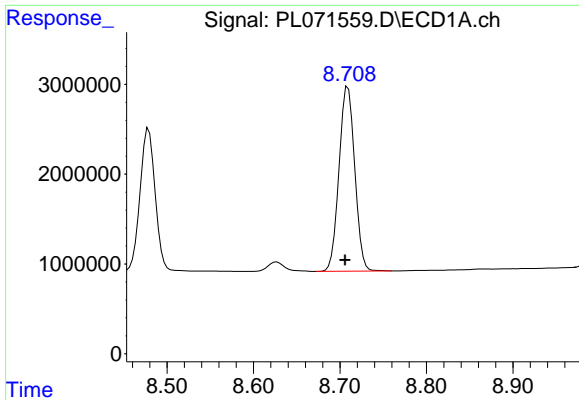
#18 Endrin aldehyde

R.T.: 8.479 min  
 Delta R.T.: 0.003 min  
 Response: 19351172  
 Conc: 45.51 ng/ml



#18 Endrin aldehyde

R.T.: 9.262 min  
 Delta R.T.: 0.004 min  
 Response: 36817221  
 Conc: 48.88 ng/ml

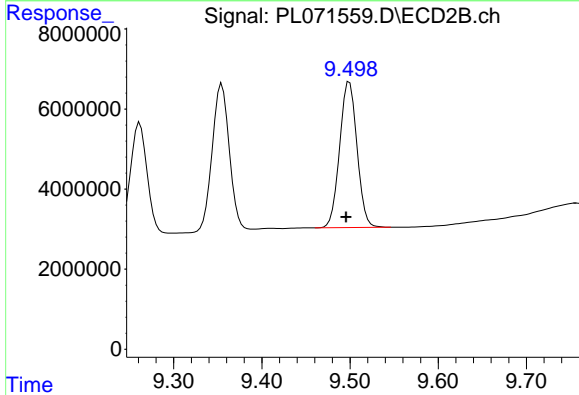


#19 Endosulfan Sulfate  
 R.T.: 8.709 min  
 Delta R.T.: 0.003 min  
 Response: 25796618  
 Conc: 44.93 ng/ml

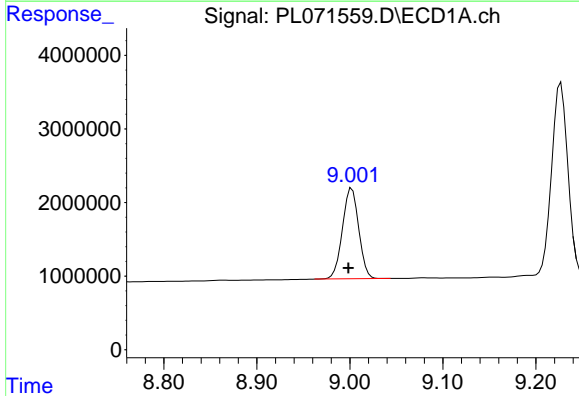
Instrument :  
 ECD\_L  
 ClientSampleId :  
 PSTDCCC050

Manual Integrations  
 APPROVED

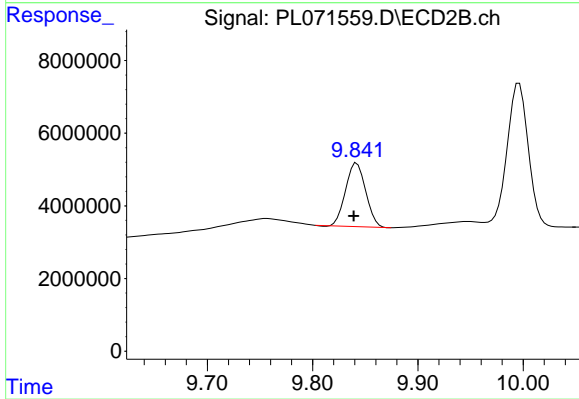
Reviewed By :Abdul Mirza 12/22/2021  
 Supervised By :mohammad ahmed 12/22/2021



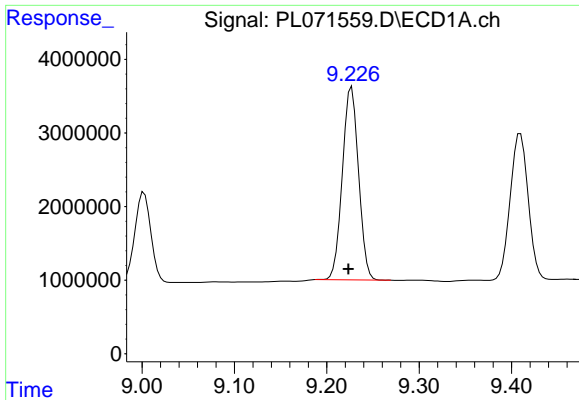
#19 Endosulfan Sulfate  
 R.T.: 9.499 min  
 Delta R.T.: 0.004 min  
 Response: 49815093  
 Conc: 50.83 ng/ml



#20 Methoxychlor  
 R.T.: 9.002 min  
 Delta R.T.: 0.004 min  
 Response: 15004150  
 Conc: 46.32 ng/ml



#20 Methoxychlor  
 R.T.: 9.842 min  
 Delta R.T.: 0.003 min  
 Response: 23391562  
 Conc: 46.60 ng/ml



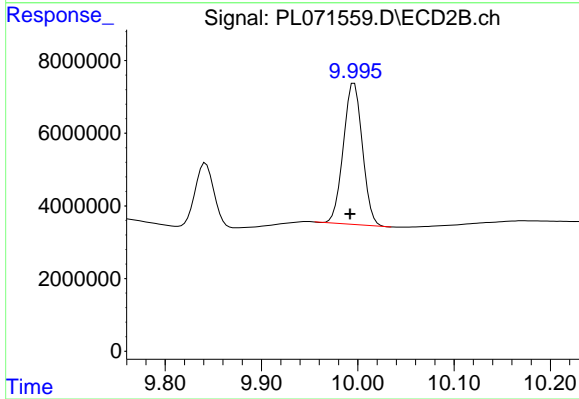
#21 Endrin ketone

R.T.: 9.227 min  
 Delta R.T.: 0.004 min  
 Response: 31909541  
 Conc: 48.38 ng/ml

Instrument :  
 ECD\_L  
 ClientSampleId :  
 PSTDCCC050

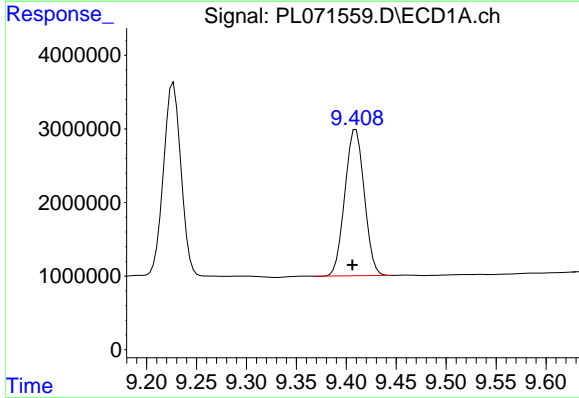
Manual Integrations  
 APPROVED

Reviewed By :Abdul Mirza 12/22/2021  
 Supervised By :mohammad ahmed 12/22/2021



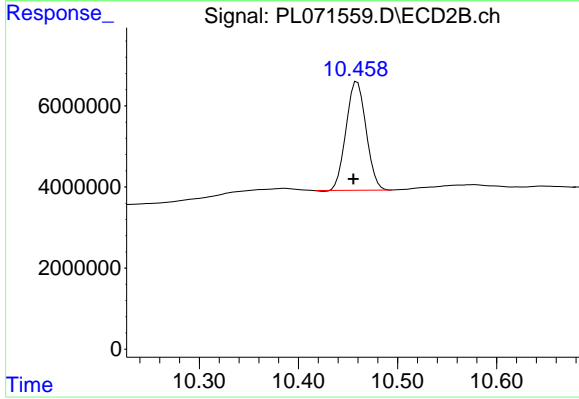
#21 Endrin ketone

R.T.: 9.996 min  
 Delta R.T.: 0.004 min  
 Response: 52994539  
 Conc: 50.40 ng/ml



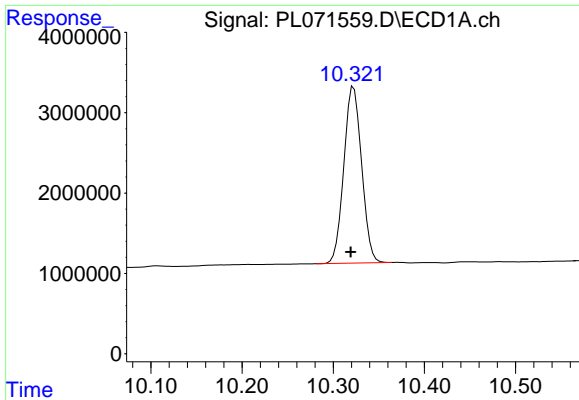
#22 Mirex

R.T.: 9.410 min  
 Delta R.T.: 0.003 min  
 Response: 26902858  
 Conc: 46.37 ng/ml



#22 Mirex

R.T.: 10.459 min  
 Delta R.T.: 0.004 min  
 Response: 37682064  
 Conc: 46.82 ng/ml

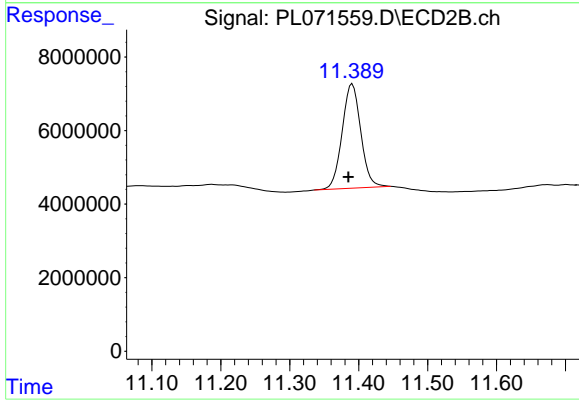


#28 Decachlorobiphenyl  
R.T.: 10.323 min  
Delta R.T.: 0.003 min  
Response: 29796679  
Conc: 44.85 ng/ml

Instrument :  
ECD\_L  
ClientSampleId :  
PSTDCCC050

Manual Integrations  
APPROVED

Reviewed By :Abdul Mirza 12/22/2021  
Supervised By :mohammad ahmed 12/22/2021



#28 Decachlorobiphenyl  
R.T.: 11.391 min  
Delta R.T.: 0.006 min  
Response: 53311596  
Conc: 49.07 ng/ml