

Data Path : Z:\pestpcbsrv\HPCHEM1\ECD_L\Data\PL122122\
 Data File : PL079815.D
 Signal(s) : Signal #1: ECD1A.ch Signal #2: ECD2B.ch
 Acq On : 21 Dec 2022 09:47
 Operator : AR\AJ
 Sample : PSTDCCC050
 Misc :
 ALS Vial : 4 Sample Multiplier: 1

Instrument :
 ECD_L
 ClientSampleId :

Integration File signal 1: autoint1.e
 Integration File signal 2: autoint2.e
 Quant Time: Dec 21 11:24:44 2022
 Quant Method : Z:\pestpcbsrv\HPCHEM1\ECD_L\methods\PL122022.M
 Quant Title : GC Extractables
 QLast Update : Wed Dec 21 10:00:39 2022
 Response via : Initial Calibration
 Integrator: ChemStation

Volume Inj. : 1 µl
 Signal #1 Phase : ZB-MR2 Signal #2 Phase: ZB-MR1
 Signal #1 Info : 30M x 0.32mm x0.2 Signal #2 Info : 30M x 0.32mm x0.5µm

	Compound	RT#1	RT#2	Resp#1	Resp#2	ng/ml	ng/ml

System Monitoring Compounds							
1)	SA Tetrachlo...	3.324	2.561	119.0E6	139.7E6	54.127	52.609
28)	SA Decachlor...	8.772	7.631	94433948	108.9E6	50.915	45.366
Target Compounds							
2)	A alpha-BHC	3.785	3.048	186.1E6	222.7E6	55.216	51.538
3)	MA gamma-BHC...	4.119	3.369	171.3E6	200.0E6	53.628	51.075
4)	MA Heptachlor	4.689	3.696	179.5E6	201.6E6	55.020	49.656
5)	MB Aldrin	5.026	3.967	160.0E6	185.5E6	53.055	48.402
6)	B beta-BHC	4.334	3.670	71332959	73364140	52.071	48.377
7)	B delta-BHC	4.574	3.889	155.7E6	197.3E6	57.962	49.562
8)	B Heptachlo...	5.460	4.465	144.5E6	167.6E6	54.562	48.019
9)	A Endosulfan I	5.843	4.827	138.8E6	159.8E6	53.452	47.684
10)	B gamma-Chl...	5.715	4.713	149.4E6	169.3E6	53.830	48.477
11)	B alpha-Chl...	5.791	4.774	148.9E6	165.2E6	53.548	48.091
12)	B 4,4'-DDE	5.975	4.969	128.9E6	153.1E6	53.455	47.617
13)	MA Dieldrin	6.121	5.089	141.8E6	162.1E6	53.732	46.832
14)	MA Endrin	6.352	5.360	121.7E6	146.3E6	52.040	51.490
15)	B Endosulfa...	6.582	5.657	119.2E6	135.9E6	48.935	46.147
16)	A 4,4'-DDD	6.500	5.521	108.4E6	125.1E6	55.282	49.119
17)	MA 4,4'-DDT	6.809	5.767	116.3E6	128.3E6	51.936	47.344
18)	B Endrin al...	6.713	5.835	94447919	105.4E6	53.088	46.980
19)	B Endosulfa...	6.946	6.059	120.7E6	137.9E6	52.591	47.528
20)	A Methoxychlor	7.294	6.344	61398364	62953435	52.089	44.394
21)	B Endrin ke...	7.432	6.554	144.6E6	153.4E6	59.242	48.028
22)	Mirex	7.888	6.726	95876852	113.2E6	50.031	46.361
23)	Chlordane-1	0.000	3.530	0	88781	N.D.	0.850 #
24)	Chlordane-2	5.026f	0.000	160.0E6	0	1578.938	N.D. #
25)	Chlordane-3	5.715	4.713	149.4E6	169.3E6	380.262	501.679 #
26)	Chlordane-4	5.791	4.774	148.9E6	165.2E6	310.302	454.383 #
27)	Chlordane-5	0.000	5.425	0	967272	N.D.	10.763 #

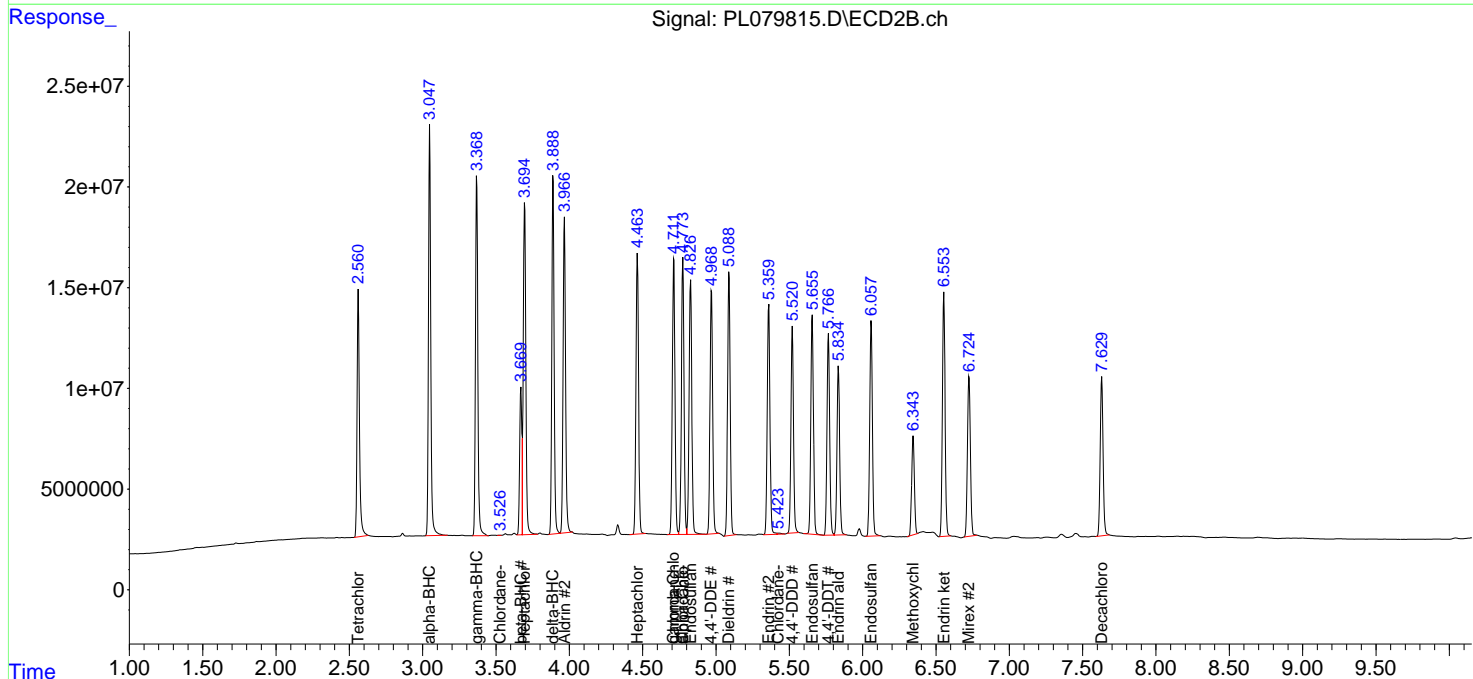
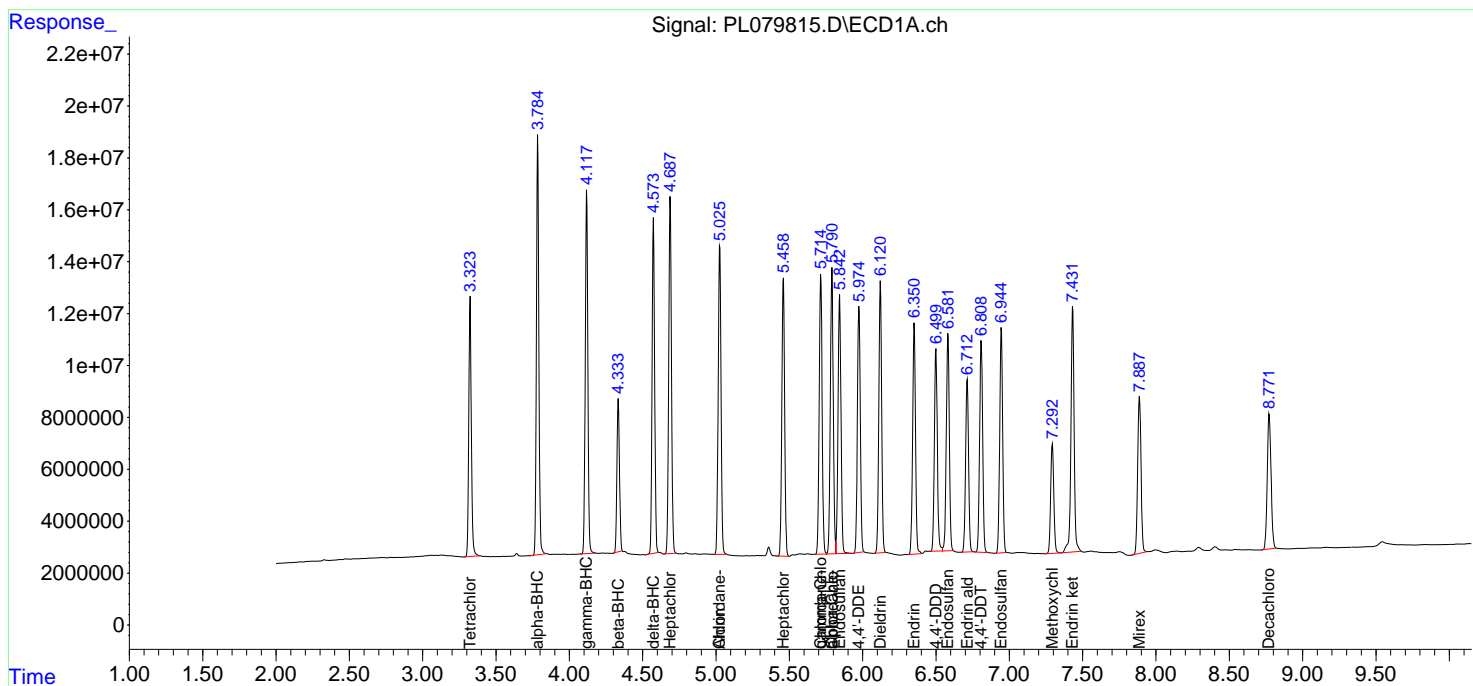
(f)=RT Delta > 1/2 Window (#)=Amounts differ by > 25% (m)=manual int.

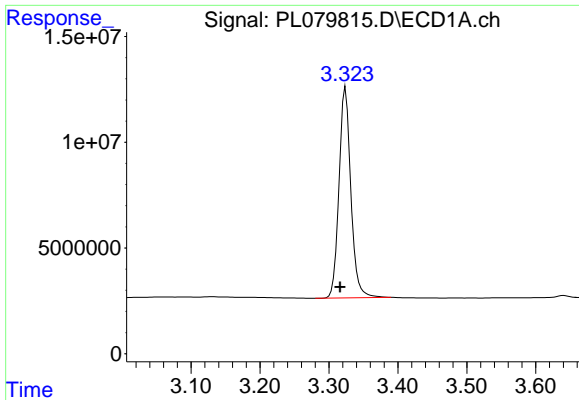
Data Path : Z:\pestpcbsrv\HPCHEM1\ECD_L\Data\PL122122\
 Data File : PL079815.D
 Signal(s) : Signal #1: ECD1A.ch Signal #2: ECD2B.ch
 Acq On : 21 Dec 2022 09:47
 Operator : AR\AJ
 Sample : PSTDCCC050
 Misc :
 ALS Vial : 4 Sample Multiplier: 1

Instrument :
 ECD_L
 ClientSampleId :

Integration File signal 1: autoint1.e
 Integration File signal 2: autoint2.e
 Quant Time: Dec 21 11:24:44 2022
 Quant Method : Z:\pestpcbsrv\HPCHEM1\ECD_L\methods\PL122022.M
 Quant Title : GC Extractables
 QLast Update : Wed Dec 21 10:00:39 2022
 Response via : Initial Calibration
 Integrator: ChemStation

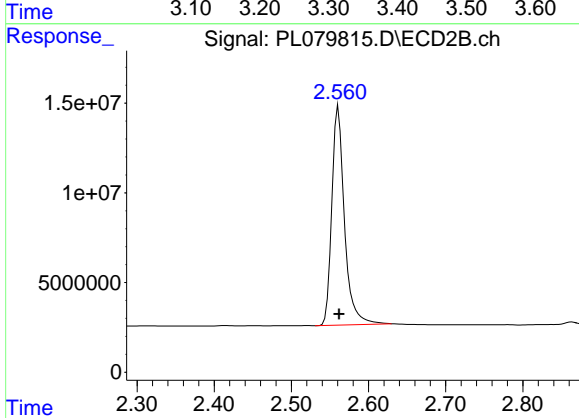
Volume Inj. : 1 µl
 Signal #1 Phase : ZB-MR2 Signal #2 Phase: ZB-MR1
 Signal #1 Info : 30M x 0.32mm x0.2 Signal #2 Info : 30M x 0.32mm x0.5µm



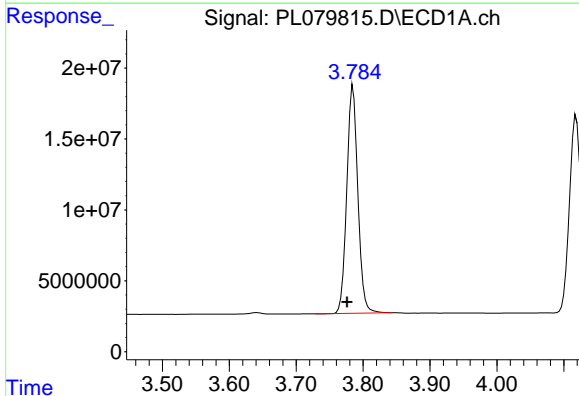


#1 Tetrachloro-m-xylene
 R.T.: 3.324 min
 Delta R.T.: 0.008 min
 Response: 118953992
 Conc: 54.13 ng/ml

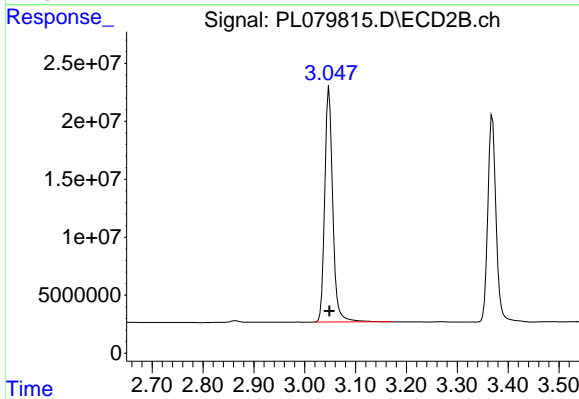
Instrument :
 ECD_L
 ClientSampleId :



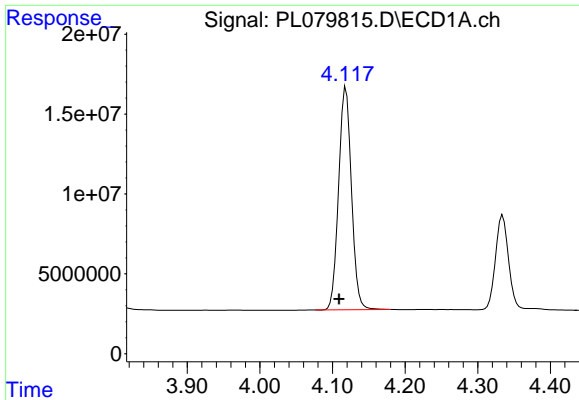
#1 Tetrachloro-m-xylene
 R.T.: 2.561 min
 Delta R.T.: 0.000 min
 Response: 139652472
 Conc: 52.61 ng/ml



#2 alpha-BHC
 R.T.: 3.785 min
 Delta R.T.: 0.009 min
 Response: 186146831
 Conc: 55.22 ng/ml

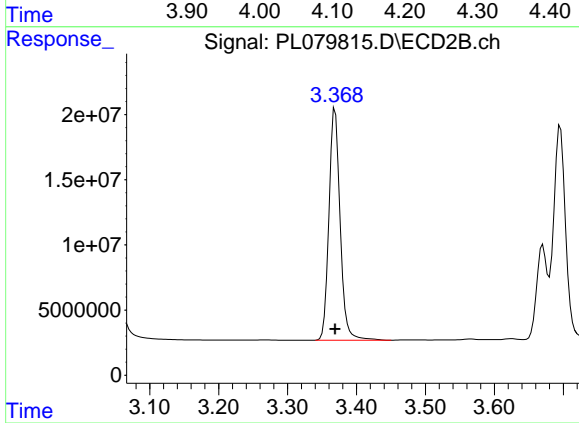


#2 alpha-BHC
 R.T.: 3.048 min
 Delta R.T.: 0.000 min
 Response: 222735684
 Conc: 51.54 ng/ml

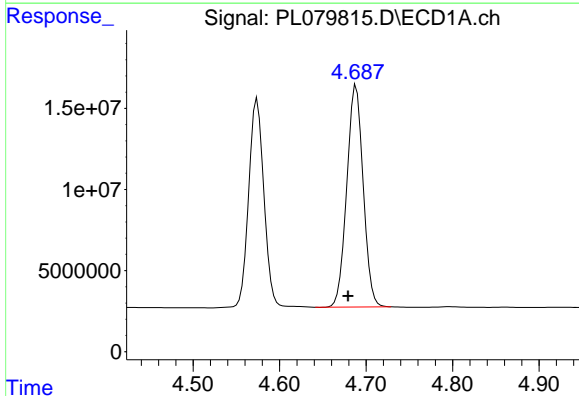


#3 gamma-BHC (Lindane)
 R.T.: 4.119 min
 Delta R.T.: 0.010 min
 Response: 171349072
 Conc: 53.63 ng/ml

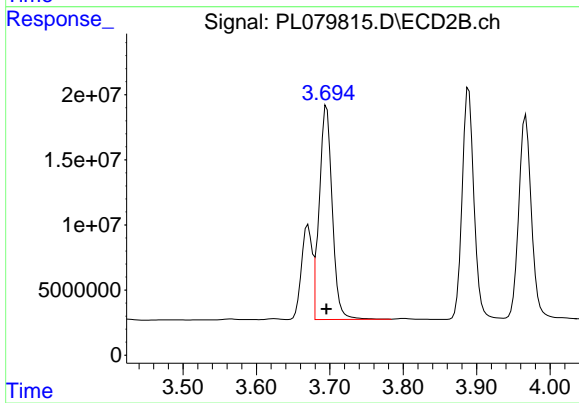
Instrument :
 ECD_L
 ClientSampleId :



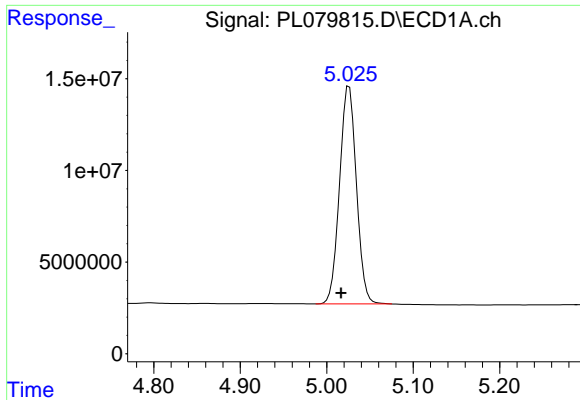
#3 gamma-BHC (Lindane)
 R.T.: 3.369 min
 Delta R.T.: 0.000 min
 Response: 200037551
 Conc: 51.08 ng/ml



#4 Heptachlor
 R.T.: 4.689 min
 Delta R.T.: 0.009 min
 Response: 179533212
 Conc: 55.02 ng/ml



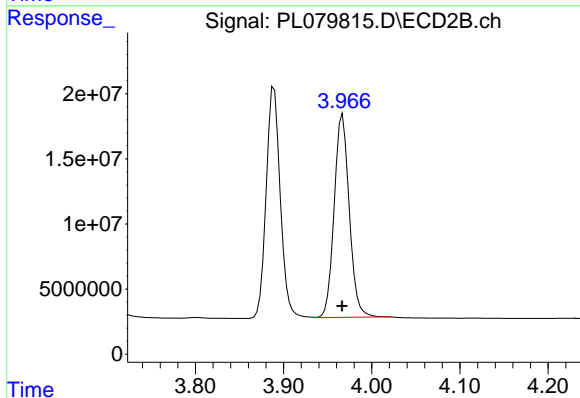
#4 Heptachlor
 R.T.: 3.696 min
 Delta R.T.: 0.000 min
 Response: 201563368
 Conc: 49.66 ng/ml



#5 Aldrin

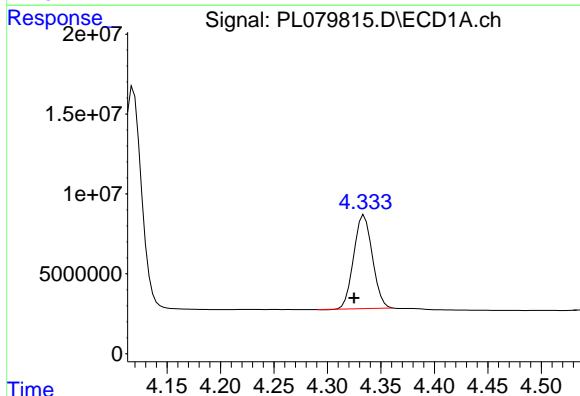
R.T.: 5.026 min
 Delta R.T.: 0.009 min
 Response: 159981953
 Conc: 53.05 ng/ml

Instrument :
 ECD_L
 ClientSampleId :



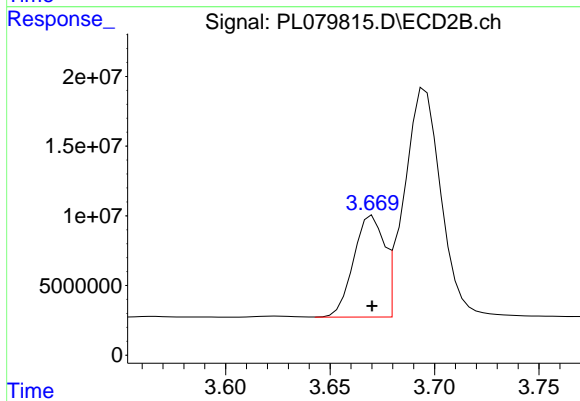
#5 Aldrin

R.T.: 3.967 min
 Delta R.T.: 0.000 min
 Response: 185533268
 Conc: 48.40 ng/ml



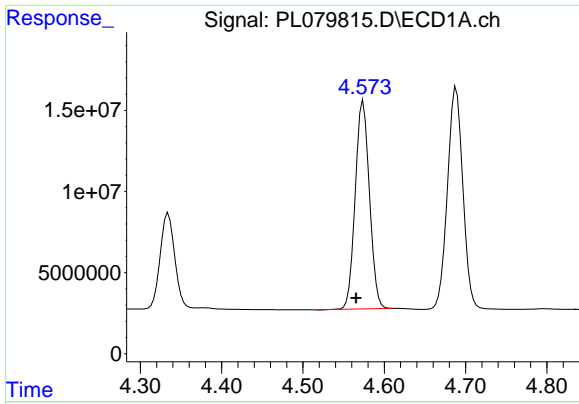
#6 beta-BHC

R.T.: 4.334 min
 Delta R.T.: 0.010 min
 Response: 71332959
 Conc: 52.07 ng/ml



#6 beta-BHC

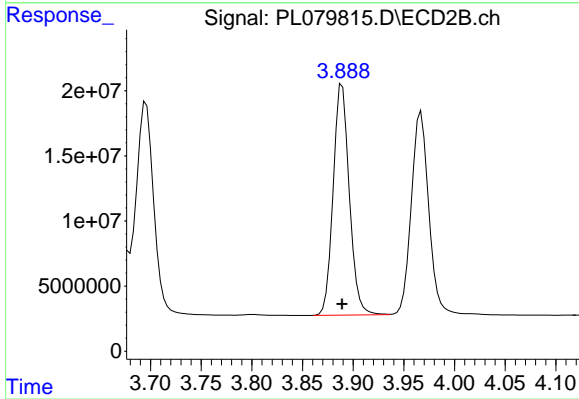
R.T.: 3.670 min
 Delta R.T.: 0.000 min
 Response: 73364140
 Conc: 48.38 ng/ml



#7 delta-BHC

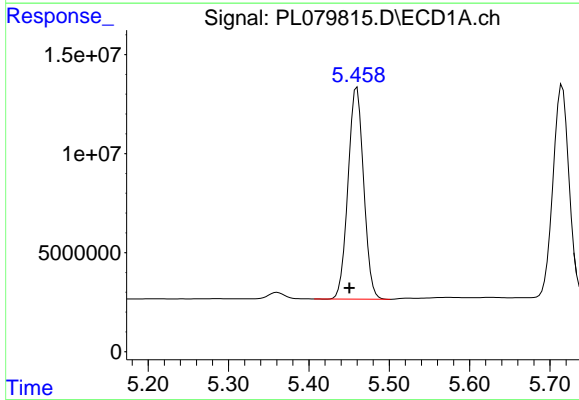
R.T.: 4.574 min
 Delta R.T.: 0.009 min
 Response: 155658608
 Conc: 57.96 ng/ml

Instrument :
 ECD_L
 ClientSampleId :



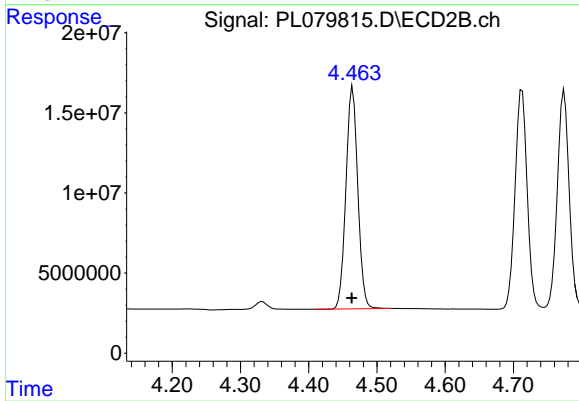
#7 delta-BHC

R.T.: 3.889 min
 Delta R.T.: 0.000 min
 Response: 197256144
 Conc: 49.56 ng/ml



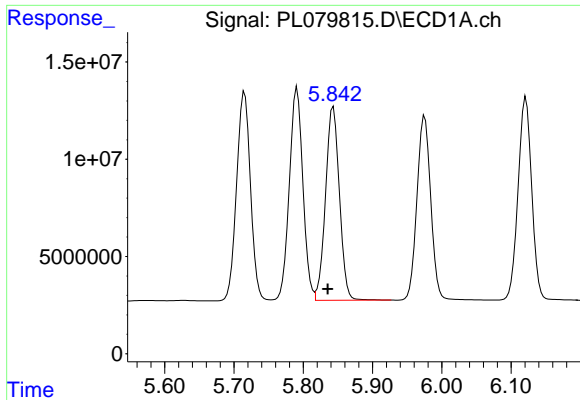
#8 Heptachlor epoxide

R.T.: 5.460 min
 Delta R.T.: 0.009 min
 Response: 144457306
 Conc: 54.56 ng/ml



#8 Heptachlor epoxide

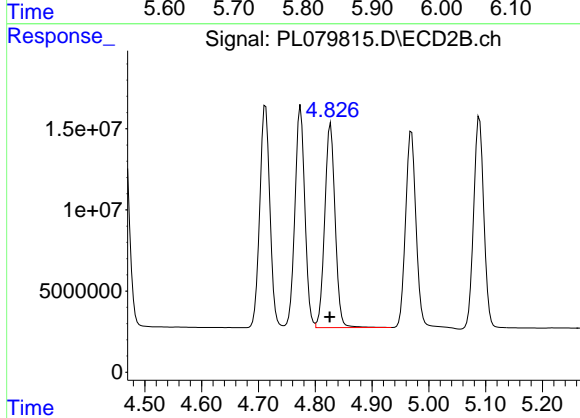
R.T.: 4.465 min
 Delta R.T.: 0.002 min
 Response: 167561676
 Conc: 48.02 ng/ml



#9 Endosulfan I

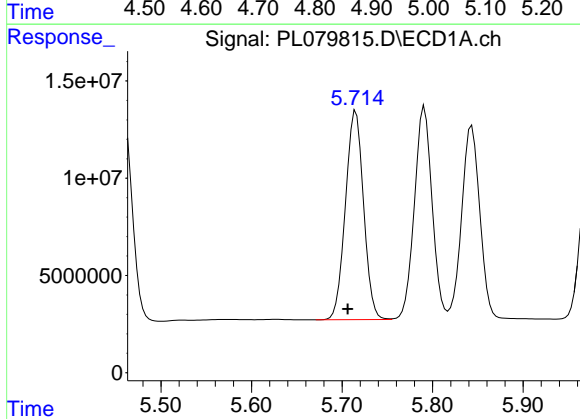
R.T.: 5.843 min
 Delta R.T.: 0.008 min
 Response: 138759096
 Conc: 53.45 ng/ml

Instrument :
 ECD_L
 ClientSampleId :



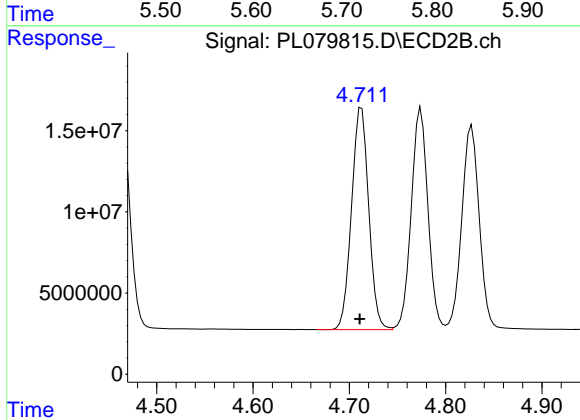
#9 Endosulfan I

R.T.: 4.827 min
 Delta R.T.: 0.001 min
 Response: 159809588
 Conc: 47.68 ng/ml



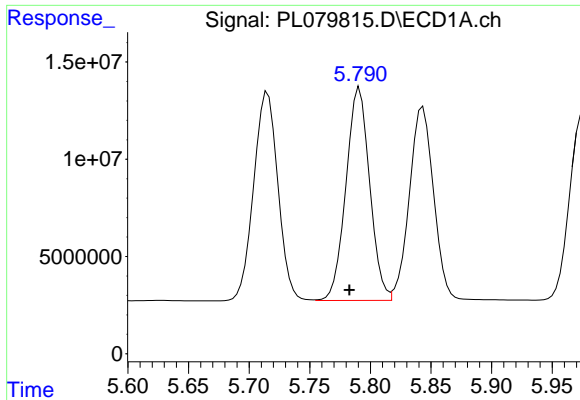
#10 gamma-Chlordane

R.T.: 5.715 min
 Delta R.T.: 0.009 min
 Response: 149443059
 Conc: 53.83 ng/ml



#10 gamma-Chlordane

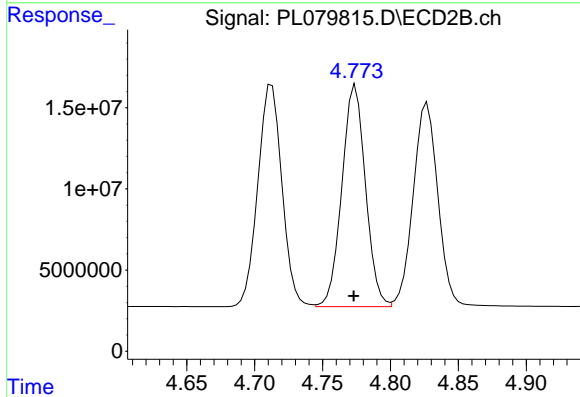
R.T.: 4.713 min
 Delta R.T.: 0.002 min
 Response: 169334377
 Conc: 48.48 ng/ml



#11 alpha-Chlordane

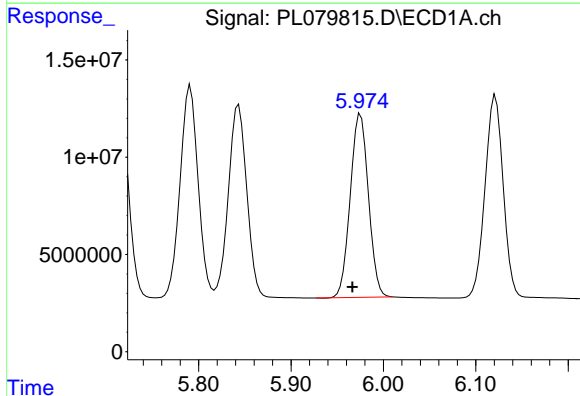
R.T.: 5.791 min
Delta R.T.: 0.008 min
Response: 148935308
Conc: 53.55 ng/ml

Instrument :
ECD_L
ClientSampleId :



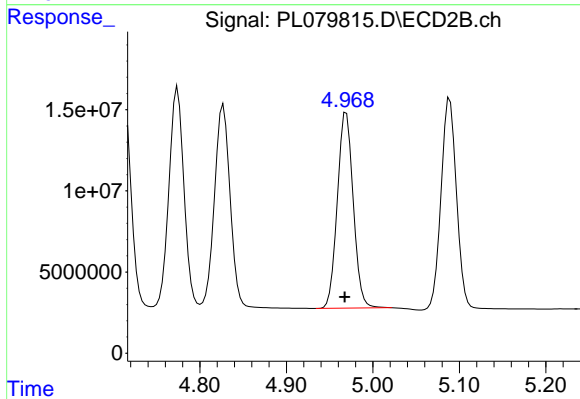
#11 alpha-Chlordane

R.T.: 4.774 min
Delta R.T.: 0.001 min
Response: 165174912
Conc: 48.09 ng/ml



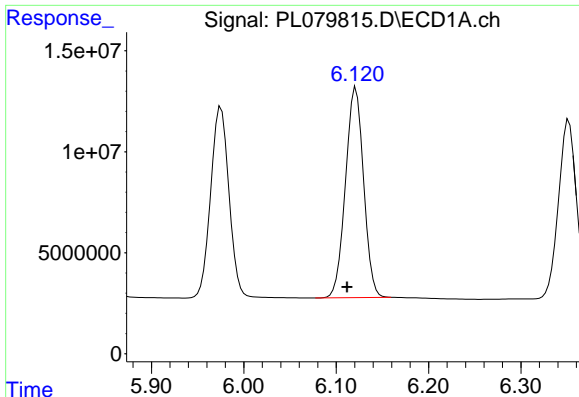
#12 4,4'-DDE

R.T.: 5.975 min
Delta R.T.: 0.009 min
Response: 128918908
Conc: 53.46 ng/ml



#12 4,4'-DDE

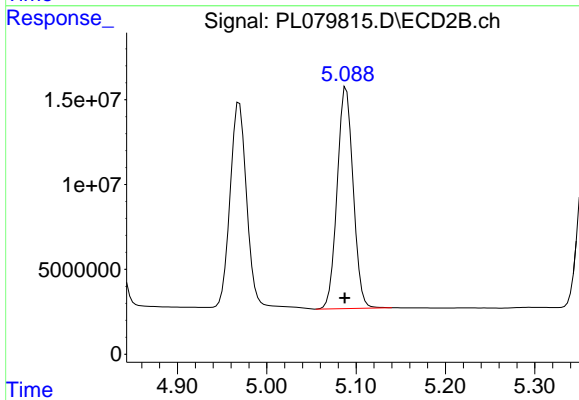
R.T.: 4.969 min
Delta R.T.: 0.002 min
Response: 153106176
Conc: 47.62 ng/ml



#13 Dieldrin

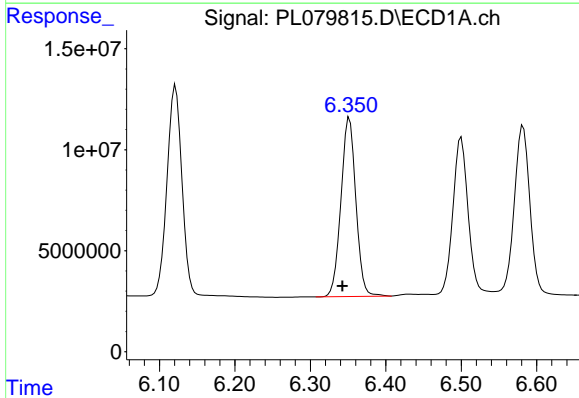
R.T.: 6.121 min
 Delta R.T.: 0.010 min
 Response: 141800030
 Conc: 53.73 ng/ml

Instrument :
 ECD_L
 ClientSampleId :



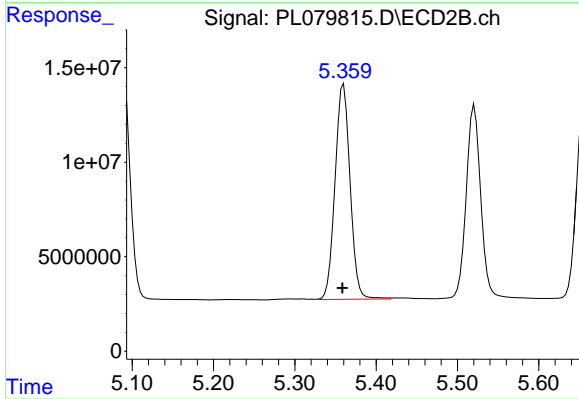
#13 Dieldrin

R.T.: 5.089 min
 Delta R.T.: 0.002 min
 Response: 162071469
 Conc: 46.83 ng/ml



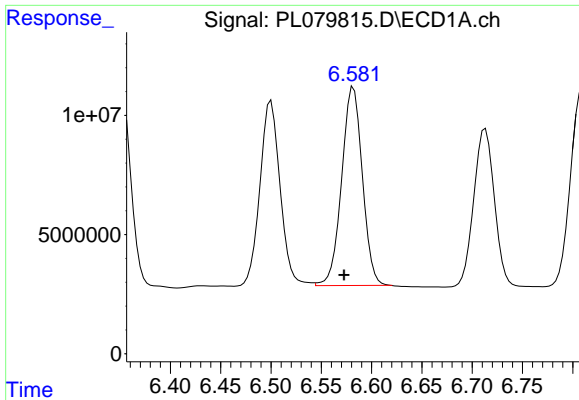
#14 Endrin

R.T.: 6.352 min
 Delta R.T.: 0.009 min
 Response: 121693401
 Conc: 52.04 ng/ml



#14 Endrin

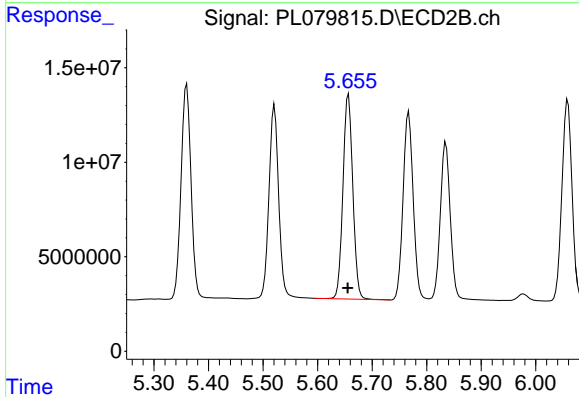
R.T.: 5.360 min
 Delta R.T.: 0.002 min
 Response: 146345882
 Conc: 51.49 ng/ml



#15 Endosulfan II

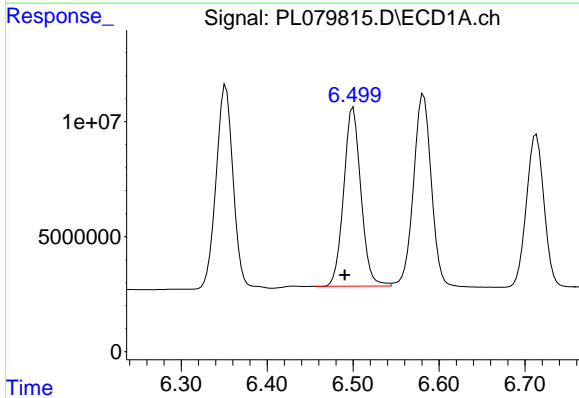
R.T.: 6.582 min
Delta R.T.: 0.009 min
Response: 119220827
Conc: 48.94 ng/ml

Instrument :
ECD_L
ClientSampleId :



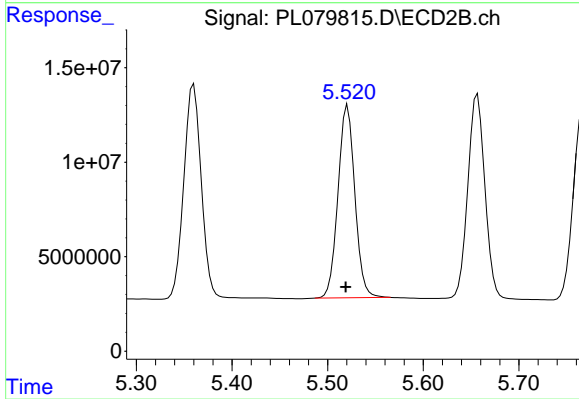
#15 Endosulfan II

R.T.: 5.657 min
Delta R.T.: 0.002 min
Response: 135913916
Conc: 46.15 ng/ml



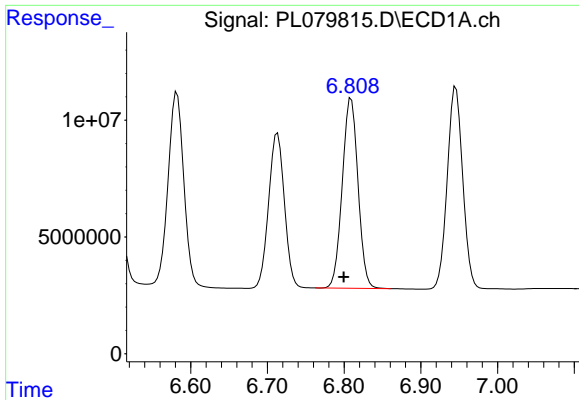
#16 4,4'-DDD

R.T.: 6.500 min
Delta R.T.: 0.010 min
Response: 108421624
Conc: 55.28 ng/ml



#16 4,4'-DDD

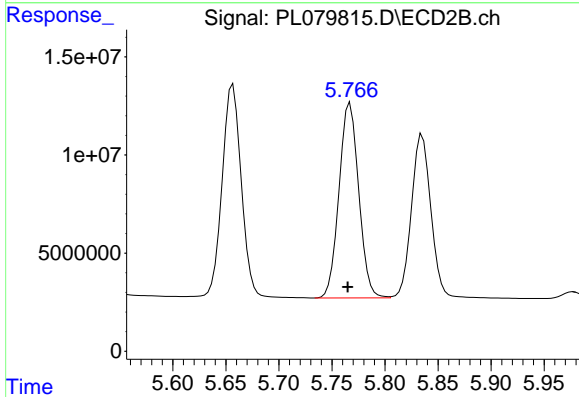
R.T.: 5.521 min
Delta R.T.: 0.002 min
Response: 125123201
Conc: 49.12 ng/ml



#17 4,4'-DDT

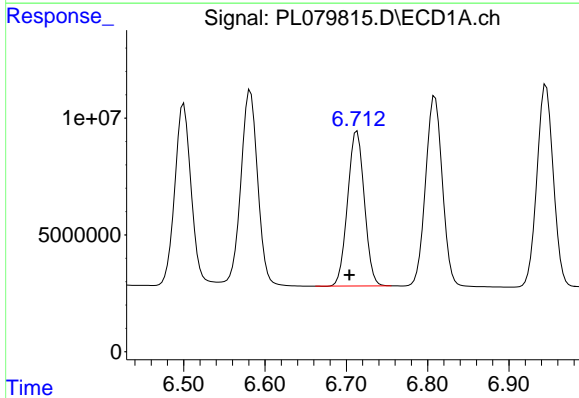
R.T.: 6.809 min
 Delta R.T.: 0.010 min
 Response: 116272957
 Conc: 51.94 ng/ml

Instrument :
 ECD_L
 ClientSampleId :



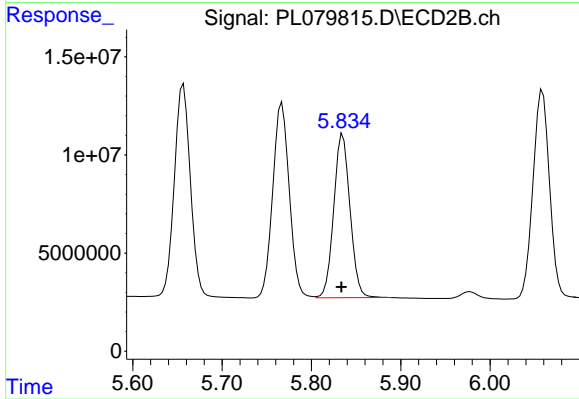
#17 4,4'-DDT

R.T.: 5.767 min
 Delta R.T.: 0.002 min
 Response: 128260139
 Conc: 47.34 ng/ml



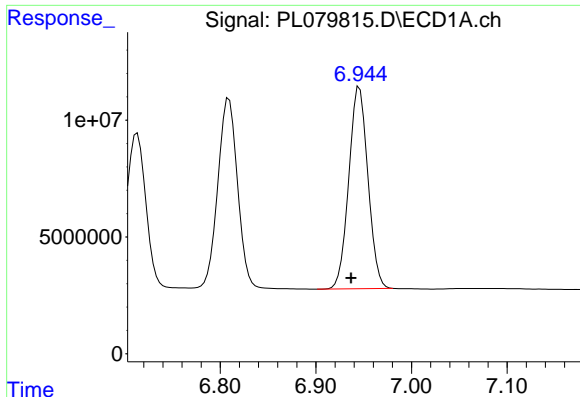
#18 Endrin aldehyde

R.T.: 6.713 min
 Delta R.T.: 0.009 min
 Response: 94447919
 Conc: 53.09 ng/ml



#18 Endrin aldehyde

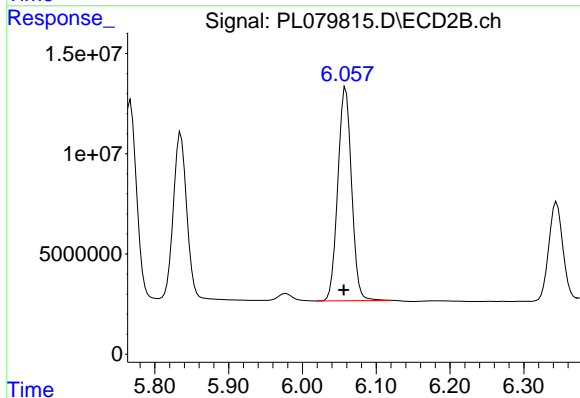
R.T.: 5.835 min
 Delta R.T.: 0.002 min
 Response: 105402951
 Conc: 46.98 ng/ml



#19 Endosulfan Sulfate

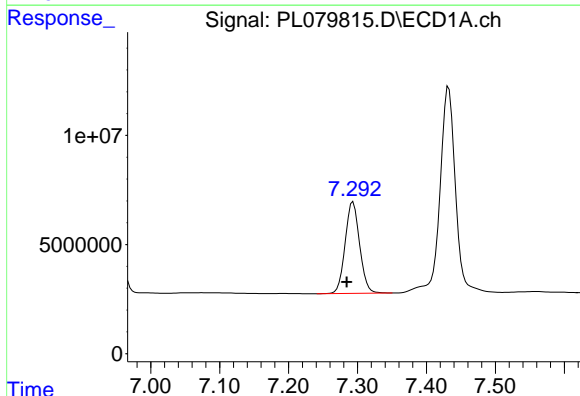
R.T.: 6.946 min
 Delta R.T.: 0.009 min
 Response: 120675954
 Conc: 52.59 ng/ml

Instrument :
 ECD_L
 ClientSampleId :



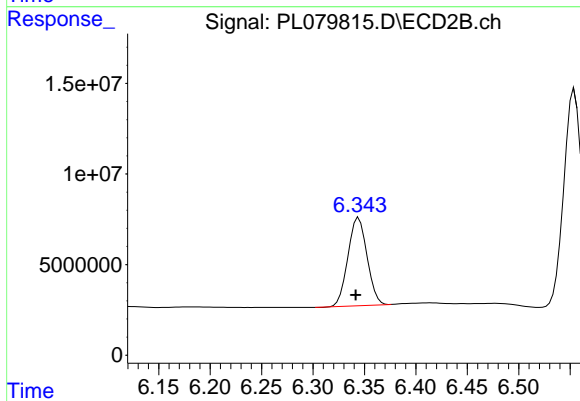
#19 Endosulfan Sulfate

R.T.: 6.059 min
 Delta R.T.: 0.003 min
 Response: 137929870
 Conc: 47.53 ng/ml



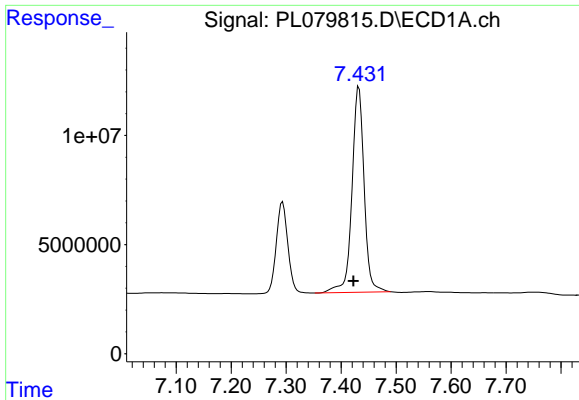
#20 Methoxychlor

R.T.: 7.294 min
 Delta R.T.: 0.009 min
 Response: 61398364
 Conc: 52.09 ng/ml



#20 Methoxychlor

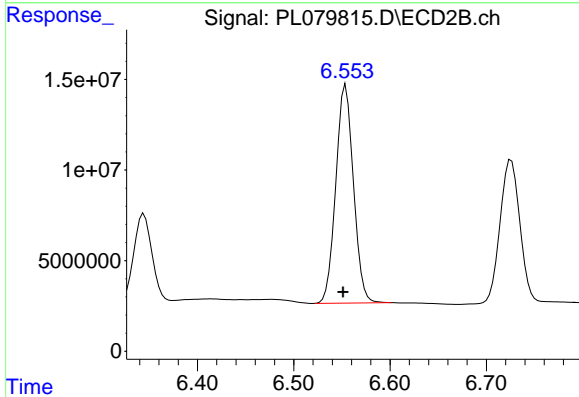
R.T.: 6.344 min
 Delta R.T.: 0.003 min
 Response: 62953435
 Conc: 44.39 ng/ml



#21 Endrin ketone

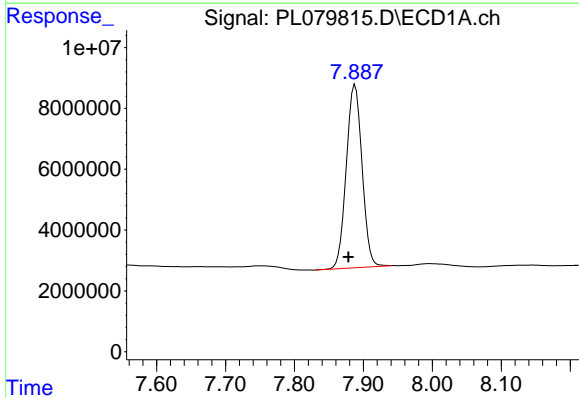
R.T.: 7.432 min
 Delta R.T.: 0.010 min
 Response: 144646140
 Conc: 59.24 ng/ml

Instrument :
 ECD_L
 ClientSampleId :



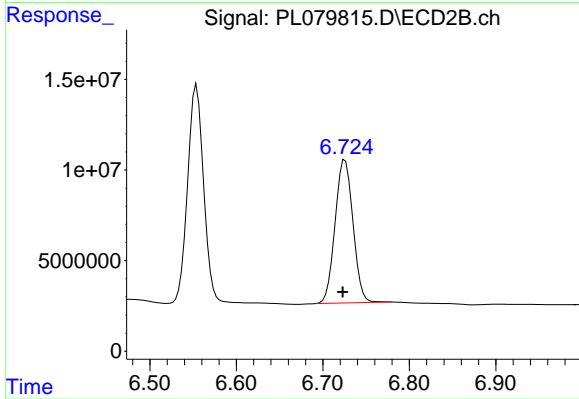
#21 Endrin ketone

R.T.: 6.554 min
 Delta R.T.: 0.003 min
 Response: 153382305
 Conc: 48.03 ng/ml



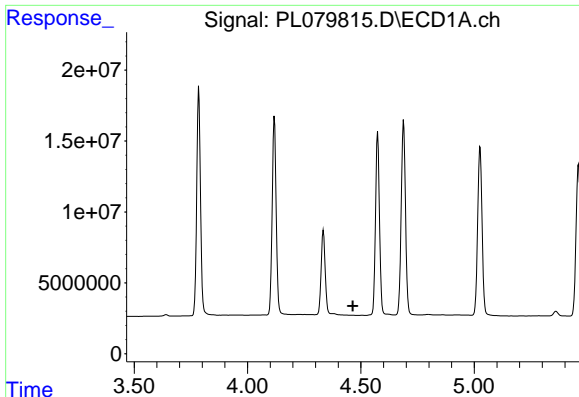
#22 Mirex

R.T.: 7.888 min
 Delta R.T.: 0.010 min
 Response: 95876852
 Conc: 50.03 ng/ml



#22 Mirex

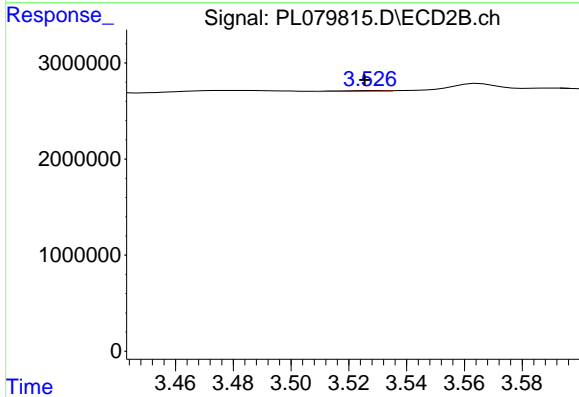
R.T.: 6.726 min
 Delta R.T.: 0.003 min
 Response: 113217915
 Conc: 46.36 ng/ml



#23 Chlordane-1

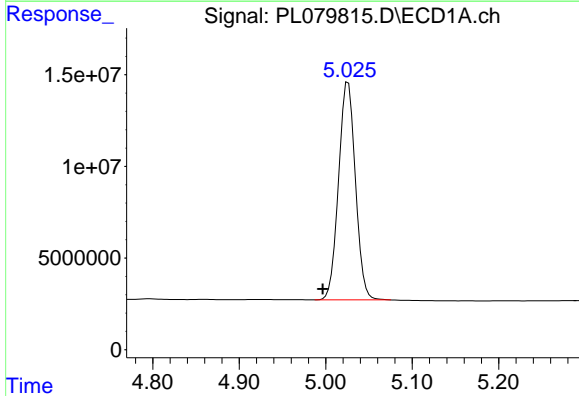
R.T.: 0.000 min
 Exp R.T.: 4.464 min
 Response: 0
 Conc: N.D.

Instrument :
 ECD_L
 ClientSampleId :



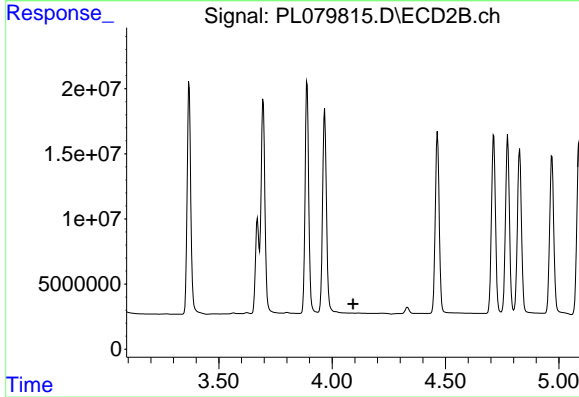
#23 Chlordane-1

R.T.: 3.530 min
 Delta R.T.: 0.004 min
 Response: 88781
 Conc: 0.85 ng/ml



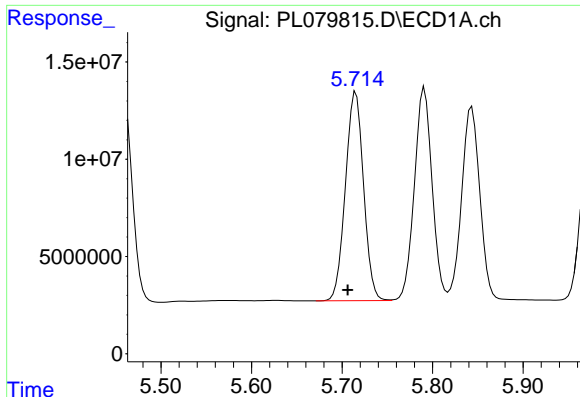
#24 Chlordane-2

R.T.: 5.026 min
 Delta R.T.: 0.029 min
 Response: 159981953
 Conc: 1578.94 ng/ml



#24 Chlordane-2

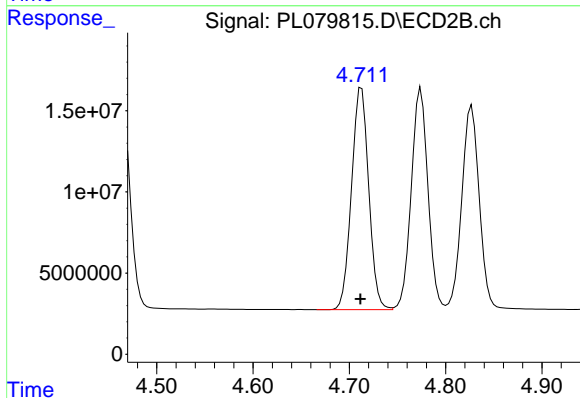
R.T.: 0.000 min
 Exp R.T.: 4.092 min
 Response: 0
 Conc: N.D.



#25 Chlordane-3

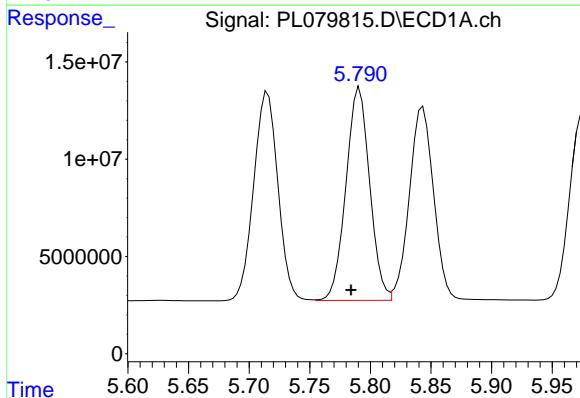
R.T.: 5.715 min
 Delta R.T.: 0.009 min
 Response: 149443059
 Conc: 380.26 ng/ml

Instrument :
 ECD_L
 ClientSampleId :



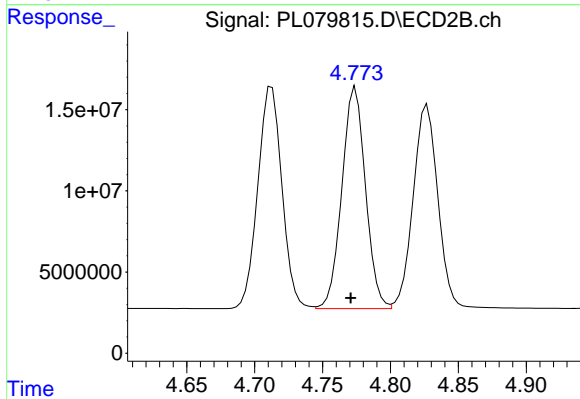
#25 Chlordane-3

R.T.: 4.713 min
 Delta R.T.: 0.001 min
 Response: 169334377
 Conc: 501.68 ng/ml



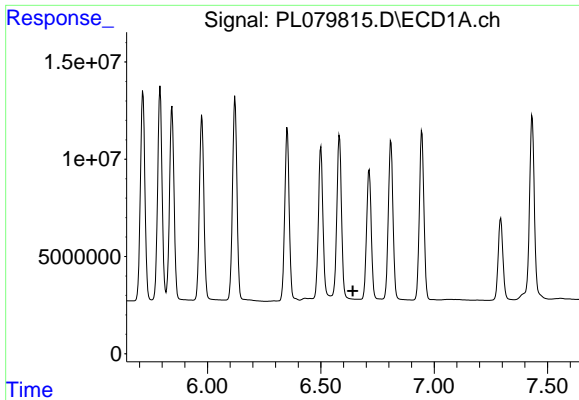
#26 Chlordane-4

R.T.: 5.791 min
 Delta R.T.: 0.007 min
 Response: 148935308
 Conc: 310.30 ng/ml



#26 Chlordane-4

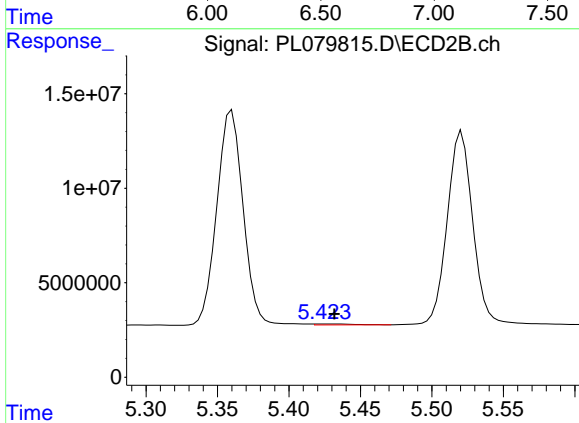
R.T.: 4.774 min
 Delta R.T.: 0.003 min
 Response: 165174912
 Conc: 454.38 ng/ml



#27 Chlordane-5

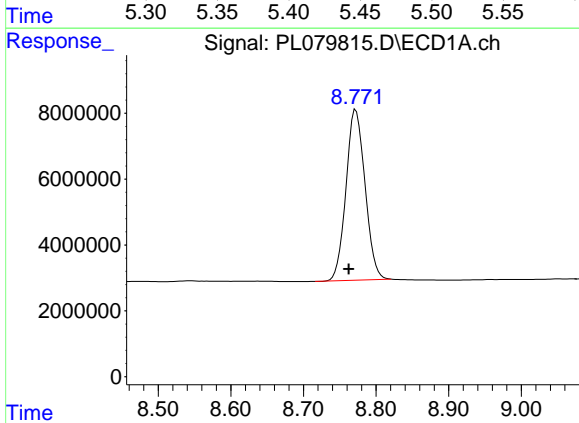
R.T.: 0.000 min
 Exp R.T.: 6.641 min
 Response: 0
 Conc: N.D.

Instrument :
 ECD_L
 ClientSampleId :



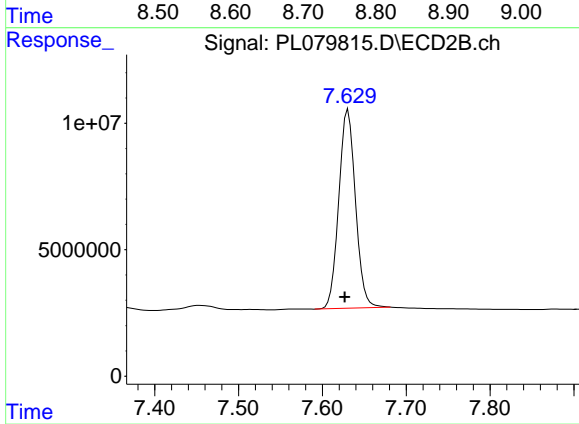
#27 Chlordane-5

R.T.: 5.425 min
 Delta R.T.: -0.007 min
 Response: 967272
 Conc: 10.76 ng/ml



#28 Decachlorobiphenyl

R.T.: 8.772 min
 Delta R.T.: 0.010 min
 Response: 94433948
 Conc: 50.91 ng/ml



#28 Decachlorobiphenyl

R.T.: 7.631 min
 Delta R.T.: 0.004 min
 Response: 108901099
 Conc: 45.37 ng/ml