

Data Path : Z:\pestpcbsrv\HPCHEM1\ECD_L\Data\PL122122\
 Data File : PL079820.D
 Signal(s) : Signal #1: ECD1A.ch Signal #2: ECD2B.ch
 Acq On : 21 Dec 2022 11:18
 Operator : AR\AJ
 Sample : PB149714TB
 Misc :
 ALS Vial : 9 Sample Multiplier: 1

Instrument :
 ECD_L
 ClientSampleId :

Integration File signal 1: autoint1.e
 Integration File signal 2: autoint2.e
 Quant Time: Dec 21 21:23:48 2022
 Quant Method : Z:\pestpcbsrv\HPCHEM1\ECD_L\methods\PL122022.M
 Quant Title : GC Extractables
 QLast Update : Wed Dec 21 10:00:39 2022
 Response via : Initial Calibration
 Integrator: ChemStation

Volume Inj. : 1 µl
 Signal #1 Phase : ZB-MR1 Signal #2 Phase: ZB-MR1
 Signal #1 Info : 30M x 0.32mm x0.2 Signal #2 Info : 30M x 0.32mm x0.5µm

	Compound	RT#1	RT#2	Resp#1	Resp#2	ng/ml	ng/ml

System Monitoring Compounds							
1)	SA Tetrachlo...	3.324	2.562	39435863	48643134	17.944	18.325
2)	SA Decachlor...	8.773	7.631	36846567	43796630	19.866	18.245
Target Compounds							
2)	A alpha-BHC	3.769	0.000	232629	0	0.069	N.D. #
4)	MA Heptachlor	0.000	3.709	0	66322	N.D.	0.016 #
6)	B beta-BHC	0.000	3.677	0	342677	N.D.	0.226 #
7)	B delta-BHC	4.545f	0.000	1160340	0	0.432	N.D. #
8)	B Heptachlo...	5.470f	0.000	914133	0	0.345	N.D. #
13)	MA Dieldrin	0.000	5.082	0	520133	N.D.	0.150 #
14)	MA Endrin	0.000	5.355	0	305309	N.D.	0.107 #
15)	B Endosulfa...	6.570	0.000	2899544	0	1.190	N.D. #
16)	A 4,4'-DDD	6.493	5.524	1437229	279974	0.733	0.110 #
18)	B Endrin al...	6.731f	5.812f	123879	115939	0.070	0.052 #
21)	B Endrin ke...	7.447f	6.567f	6006511	600932	2.460	0.188 #
27)	Chlordane-5	0.000	5.421	0	3528435	N.D.	39.262 #

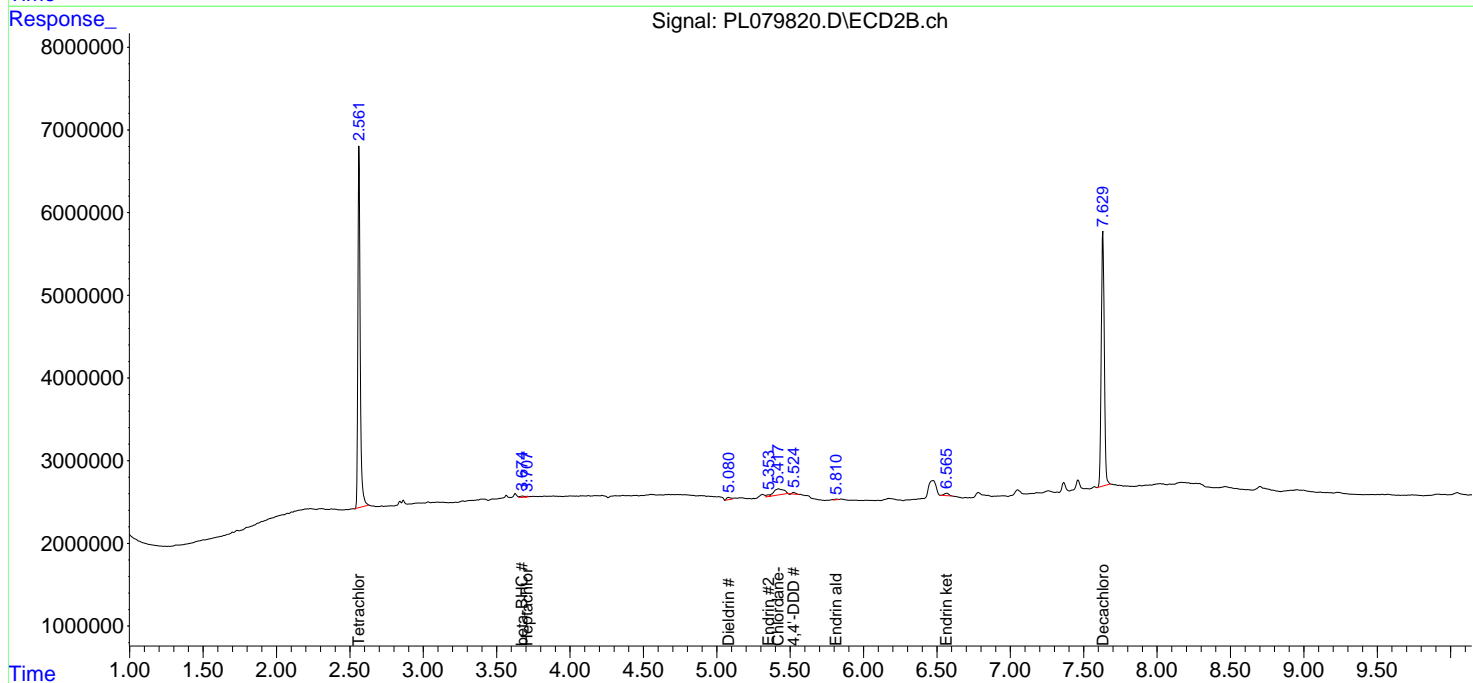
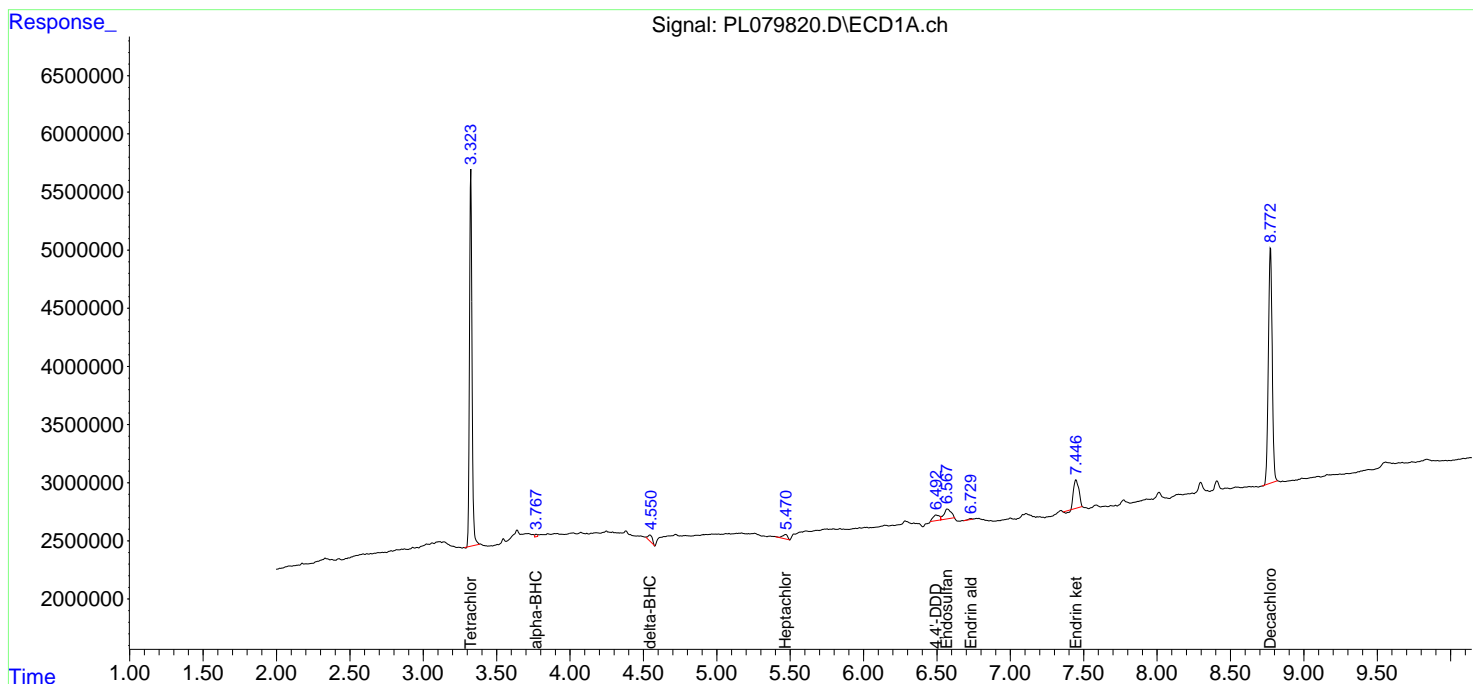
(f)=RT Delta > 1/2 Window (#)=Amounts differ by > 25% (m)=manual int.

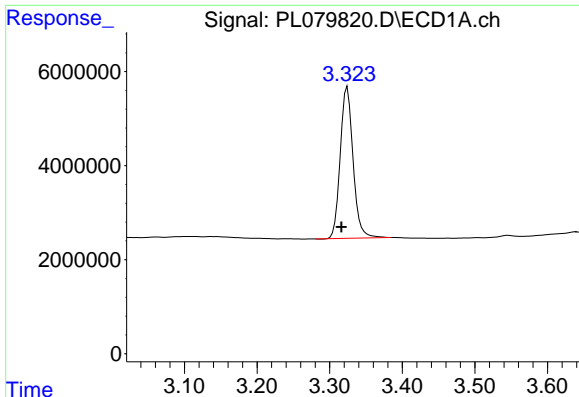
Data Path : Z:\pestpcbsrv\HPCHEM1\ECD_L\Data\PL122122\
 Data File : PL079820.D
 Signal(s) : Signal #1: ECD1A.ch Signal #2: ECD2B.ch
 Acq On : 21 Dec 2022 11:18
 Operator : AR\AJ
 Sample : PB149714TB
 Misc :
 ALS Vial : 9 Sample Multiplier: 1

Instrument :
 ECD_L
 ClientSampleId :

Integration File signal 1: autoint1.e
 Integration File signal 2: autoint2.e
 Quant Time: Dec 21 21:23:48 2022
 Quant Method : Z:\pestpcbsrv\HPCHEM1\ECD_L\methods\PL122022.M
 Quant Title : GC Extractables
 QLast Update : Wed Dec 21 10:00:39 2022
 Response via : Initial Calibration
 Integrator: ChemStation

Volume Inj. : 1 µl
 Signal #1 Phase : ZB-MR2 Signal #2 Phase: ZB-MR1
 Signal #1 Info : 30M x 0.32mm x0.2 Signal #2 Info : 30M x 0.32mm x0.5µm

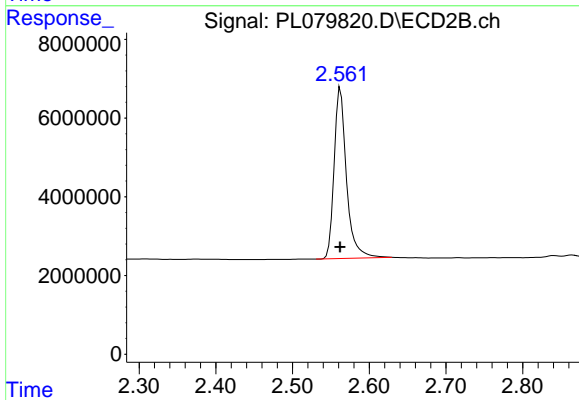




#1 Tetrachloro-m-xylene

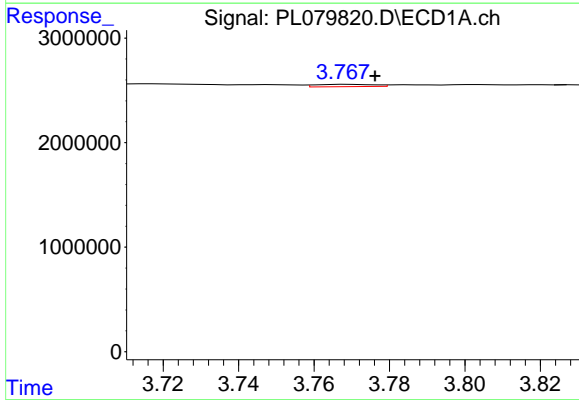
R.T.: 3.324 min
 Delta R.T.: 0.008 min
 Response: 39435863
 Conc: 17.94 ng/ml

Instrument :
 ECD_L
 ClientSampleId :



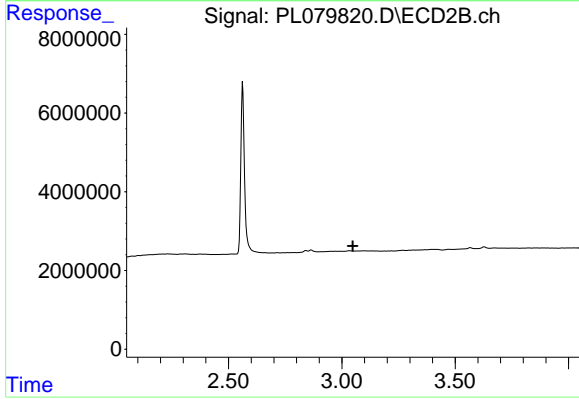
#1 Tetrachloro-m-xylene

R.T.: 2.562 min
 Delta R.T.: 0.000 min
 Response: 48643134
 Conc: 18.32 ng/ml



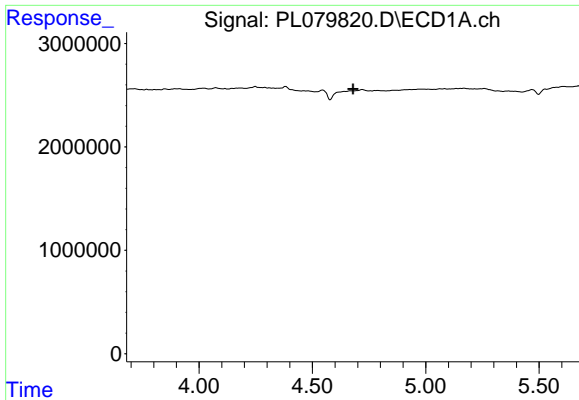
#2 alpha-BHC

R.T.: 3.769 min
 Delta R.T.: -0.007 min
 Response: 232629
 Conc: 0.07 ng/ml



#2 alpha-BHC

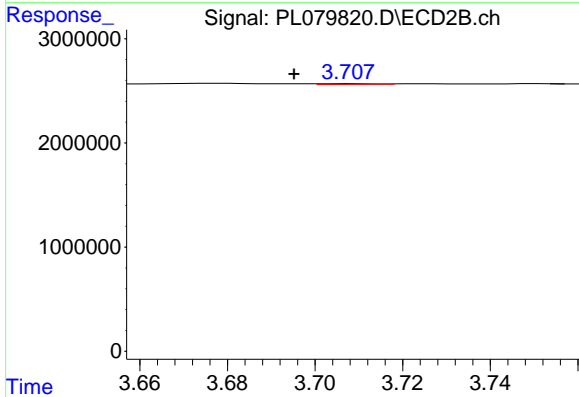
R.T.: 0.000 min
 Exp R.T. : 3.048 min
 Response: 0
 Conc: N.D.



#4 Heptachlor

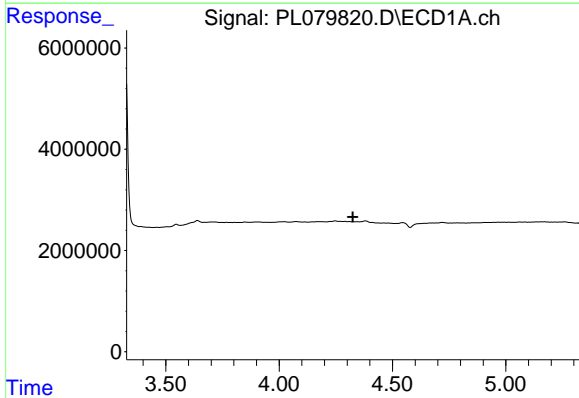
R.T.: 0.000 min
 Exp R.T. : 4.679 min
 Response: 0
 Conc: N.D.

Instrument :
 ECD_L
 ClientSampleId :



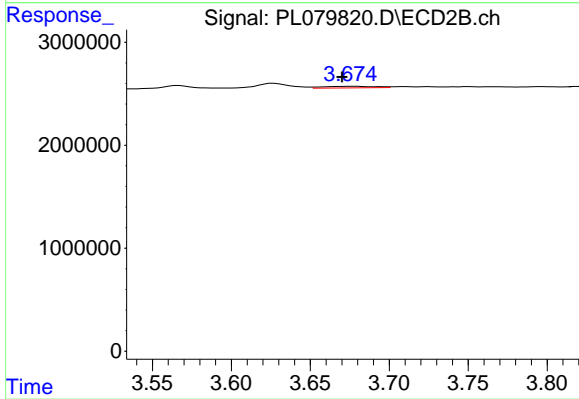
#4 Heptachlor

R.T.: 3.709 min
 Delta R.T.: 0.013 min
 Response: 66322
 Conc: 0.02 ng/ml



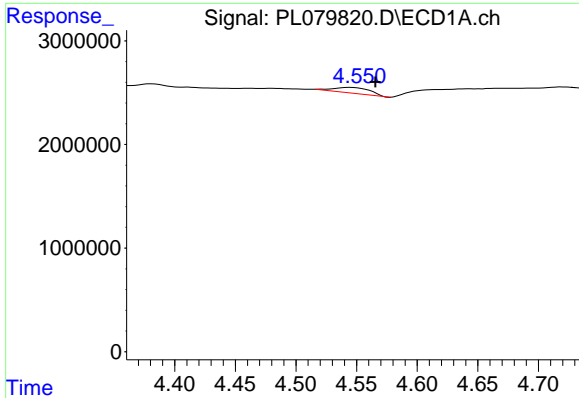
#6 beta-BHC

R.T.: 0.000 min
 Exp R.T. : 4.325 min
 Response: 0
 Conc: N.D.



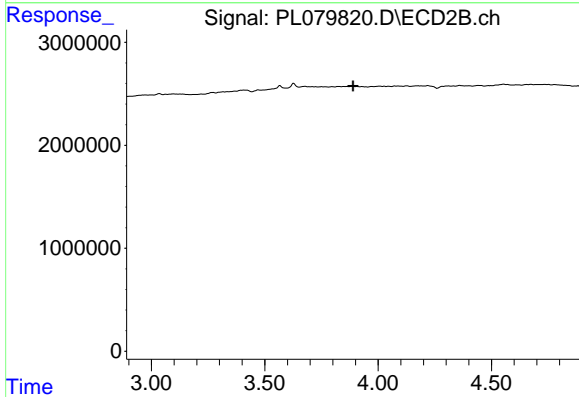
#6 beta-BHC

R.T.: 3.677 min
 Delta R.T.: 0.007 min
 Response: 342677
 Conc: 0.23 ng/ml

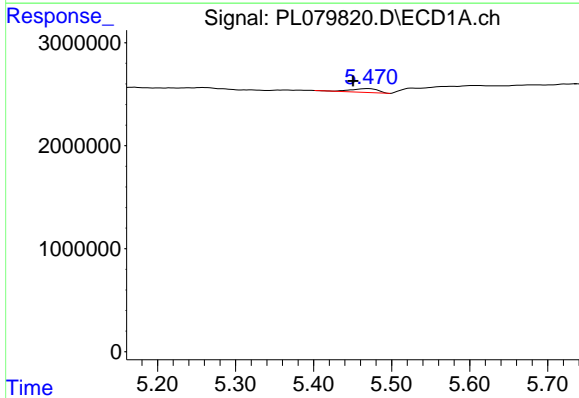


#7 delta-BHC
 R.T.: 4.545 min
 Delta R.T.: -0.020 min
 Response: 1160340
 Conc: 0.43 ng/ml

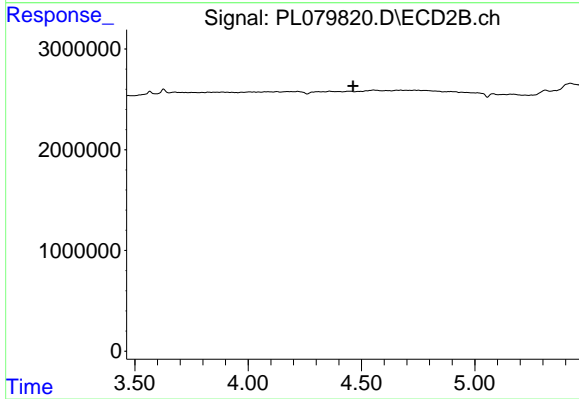
Instrument :
 ECD_L
 ClientSampleId :



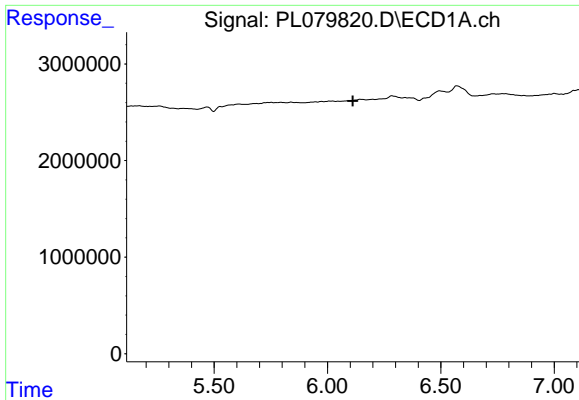
#7 delta-BHC
 R.T.: 0.000 min
 Exp R.T. : 3.889 min
 Response: 0
 Conc: N.D.



#8 Heptachlor epoxide
 R.T.: 5.470 min
 Delta R.T.: 0.019 min
 Response: 914133
 Conc: 0.35 ng/ml

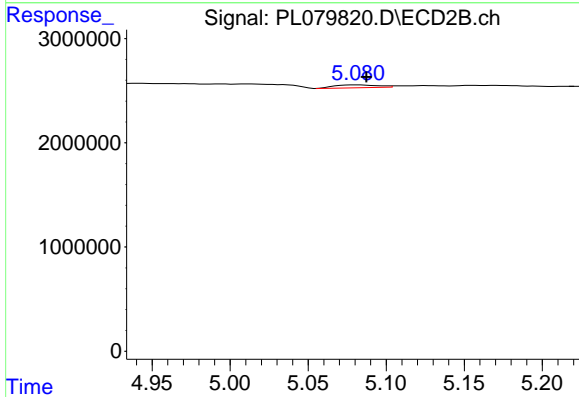


#8 Heptachlor epoxide
 R.T.: 0.000 min
 Exp R.T. : 4.463 min
 Response: 0
 Conc: N.D.

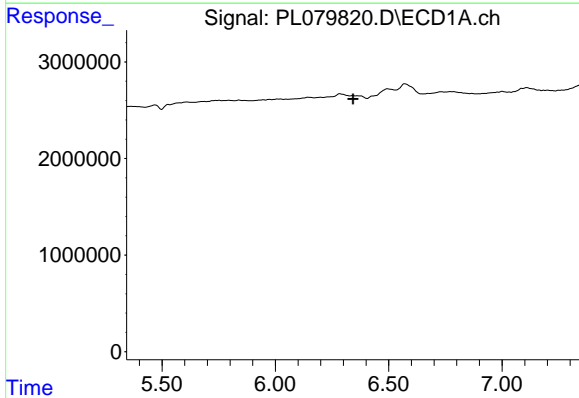


#13 Dieldrin
 R.T.: 0.000 min
 Exp R.T.: 6.112 min
 Response: 0
 Conc: N.D.

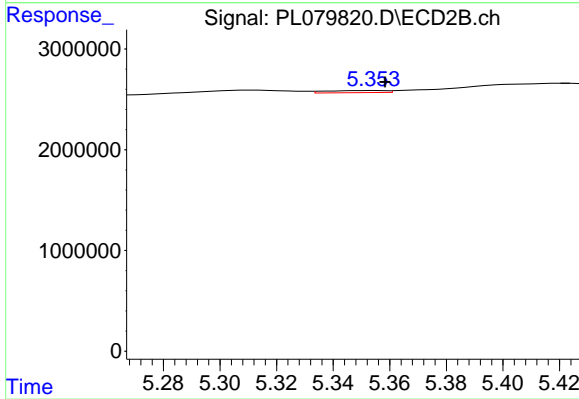
Instrument :
 ECD_L
 ClientSampleId :



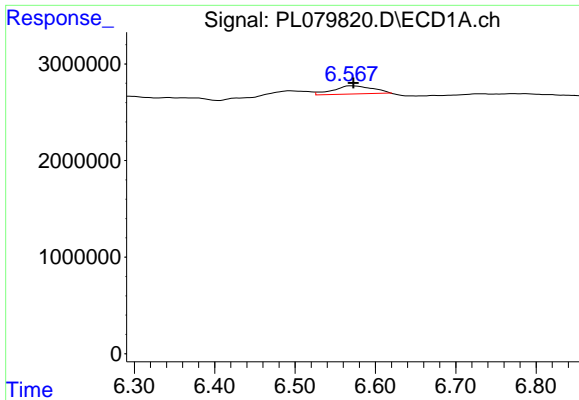
#13 Dieldrin
 R.T.: 5.082 min
 Delta R.T.: -0.005 min
 Response: 520133
 Conc: 0.15 ng/ml



#14 Endrin
 R.T.: 0.000 min
 Exp R.T.: 6.343 min
 Response: 0
 Conc: N.D.



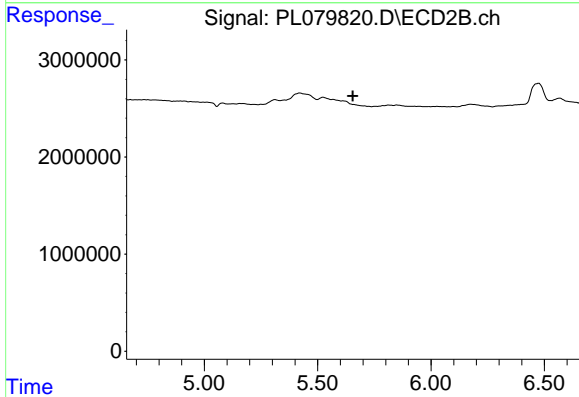
#14 Endrin
 R.T.: 5.355 min
 Delta R.T.: -0.004 min
 Response: 305309
 Conc: 0.11 ng/ml



#15 Endosulfan II

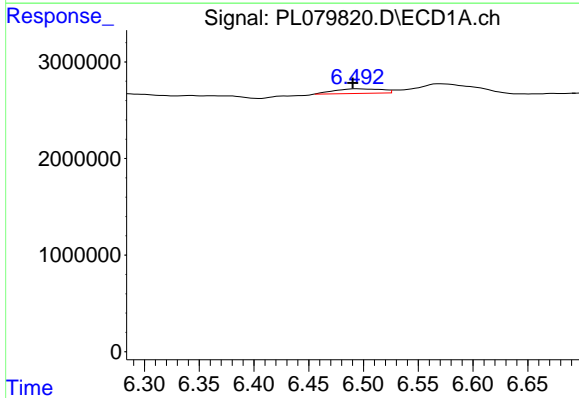
R.T.: 6.570 min
 Delta R.T.: -0.003 min
 Response: 2899544
 Conc: 1.19 ng/ml

Instrument :
 ECD_L
 ClientSampleId :



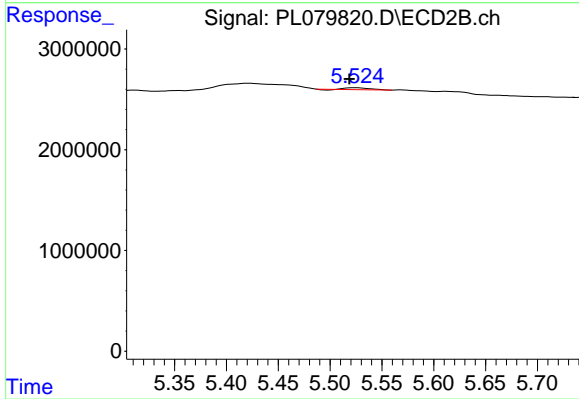
#15 Endosulfan II

R.T.: 0.000 min
 Exp R.T. : 5.655 min
 Response: 0
 Conc: N.D.



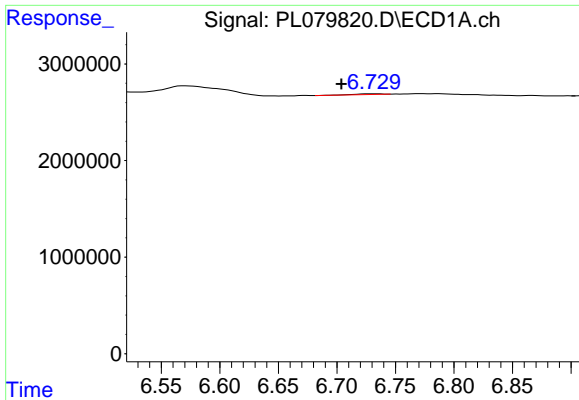
#16 4,4'-DDD

R.T.: 6.493 min
 Delta R.T.: 0.003 min
 Response: 1437229
 Conc: 0.73 ng/ml



#16 4,4'-DDD

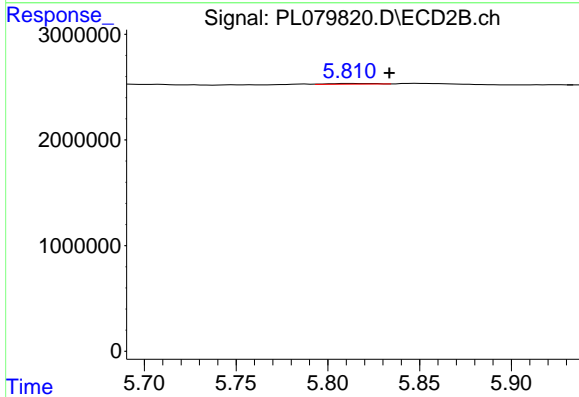
R.T.: 5.524 min
 Delta R.T.: 0.005 min
 Response: 279974
 Conc: 0.11 ng/ml



#18 Endrin aldehyde

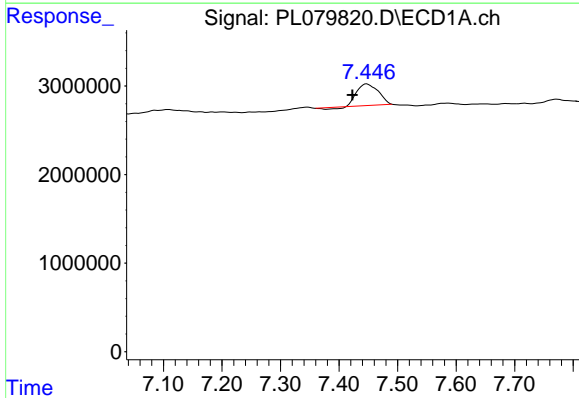
R.T.: 6.731 min
 Delta R.T.: 0.027 min
 Response: 123879
 Conc: 0.07 ng/ml

Instrument :
 ECD_L
 ClientSampleId :



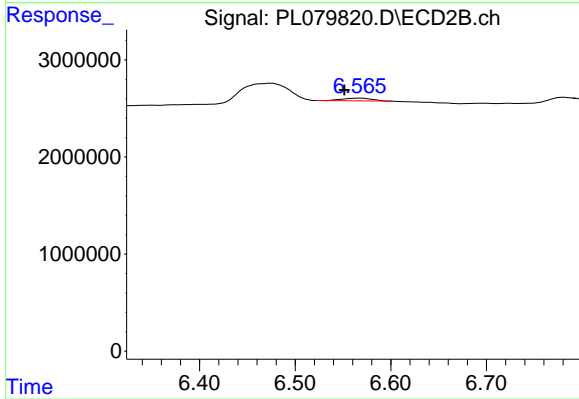
#18 Endrin aldehyde

R.T.: 5.812 min
 Delta R.T.: -0.022 min
 Response: 115939
 Conc: 0.05 ng/ml



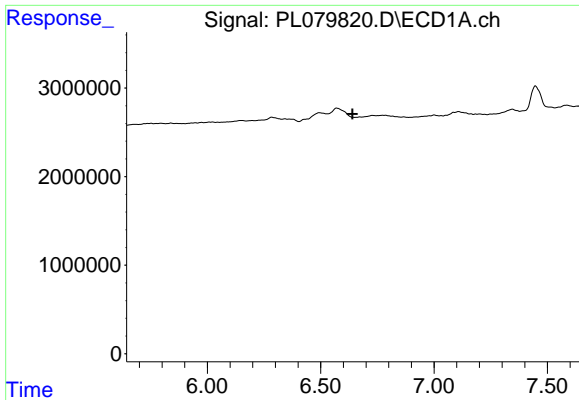
#21 Endrin ketone

R.T.: 7.447 min
 Delta R.T.: 0.025 min
 Response: 6006511
 Conc: 2.46 ng/ml



#21 Endrin ketone

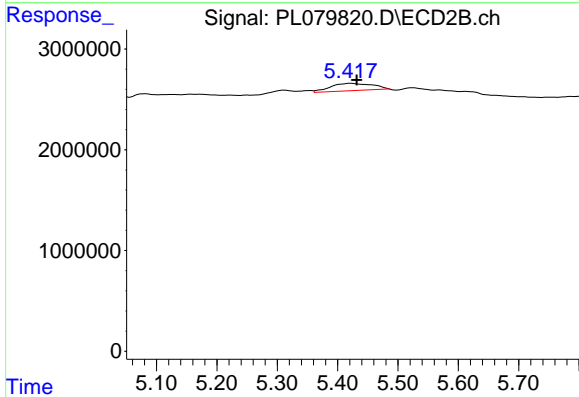
R.T.: 6.567 min
 Delta R.T.: 0.016 min
 Response: 600932
 Conc: 0.19 ng/ml



#27 Chlordane-5

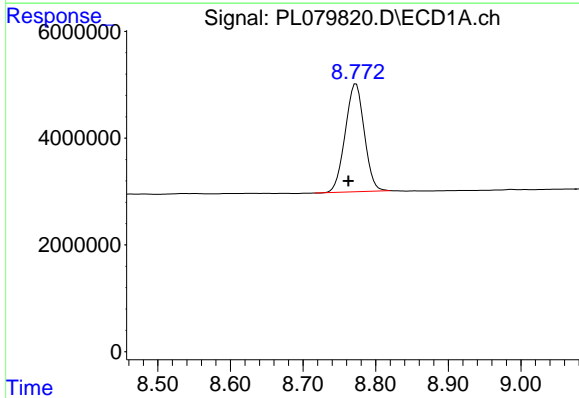
R.T.: 0.000 min
 Exp R.T.: 6.641 min
 Response: 0
 Conc: N.D.

Instrument :
 ECD_L
 ClientSampleId :



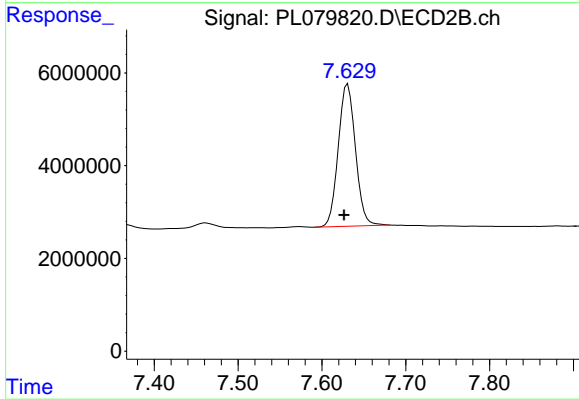
#27 Chlordane-5

R.T.: 5.421 min
 Delta R.T.: -0.011 min
 Response: 3528435
 Conc: 39.26 ng/ml



#28 Decachlorobiphenyl

R.T.: 8.773 min
 Delta R.T.: 0.011 min
 Response: 36846567
 Conc: 19.87 ng/ml



#28 Decachlorobiphenyl

R.T.: 7.631 min
 Delta R.T.: 0.004 min
 Response: 43796630
 Conc: 18.24 ng/ml