

Data Path : Z:\pestpcbsrv\HPCHEM1\ECD_L\Data\PL122122\
 Data File : PL079837.D
 Signal(s) : Signal #1: ECD1A.ch Signal #2: ECD2B.ch
 Acq On : 21 Dec 2022 15:18
 Operator : AR\AJ
 Sample : N6157-04
 Misc :
 ALS Vial : 22 Sample Multiplier: 1

Instrument :
 ECD_L
 ClientSampleId :

Integration File signal 1: autoint1.e
 Integration File signal 2: autoint2.e
 Quant Time: Dec 21 21:42:26 2022
 Quant Method : Z:\pestpcbsrv\HPCHEM1\ECD_L\methods\PL122022.M
 Quant Title : GC Extractables
 QLast Update : Wed Dec 21 10:00:39 2022
 Response via : Initial Calibration
 Integrator: ChemStation

Volume Inj. : 1 µl
 Signal #1 Phase : ZB-MR2 Signal #2 Phase: ZB-MR1
 Signal #1 Info : 30M x 0.32mm x0.2 Signal #2 Info : 30M x 0.32mm x0.5µm

	Compound	RT#1	RT#2	Resp#1	Resp#2	ng/ml	ng/ml

System Monitoring Compounds							
1)	SA Tetrachlo...	3.315	2.562	37512926	45766405	17.069	17.241
28)	SA Decachlor...	8.761	7.627	20254136	25930409	10.920	10.802
Target Compounds							
3)	MA gamma-BHC...	4.123	0.000	369155	0	0.116	N.D. #
4)	MA Heptachlor	0.000	3.719f	0	195140	N.D.	0.048 #
5)	MB Aldrin	0.000	3.957	0	107456	N.D.	0.028 #
6)	B beta-BHC	0.000	3.671	0	284237	N.D.	0.187 #
8)	B Heptachlo...	5.455	4.450	1393731	223960	0.526	0.064 #
10)	B gamma-Chl...	0.000	4.697	0	280885	N.D.	0.080 #
11)	B alpha-Chl...	0.000	4.744f	0	569779	N.D.	0.166 #
12)	B 4,4'-DDE	5.963	4.967	452863	503152	0.188	0.156
13)	MA Dieldrin	0.000	5.096	0	684038	N.D.	0.198 #
15)	B Endosulfa...	6.544f	0.000	610648	0	0.251	N.D. #
19)	B Endosulfa...	6.936	0.000	237081	0	0.103	N.D. #
22)	Mirex	7.881	0.000	45514	0	0.024	N.D. #
23)	Chlordane-1	0.000	3.541f	0	128826	N.D.	1.233 #
25)	Chlordane-3	0.000	4.697	0	280885	N.D.	0.832 #
26)	Chlordane-4	0.000	4.744f	0	569779	N.D.	1.567 #

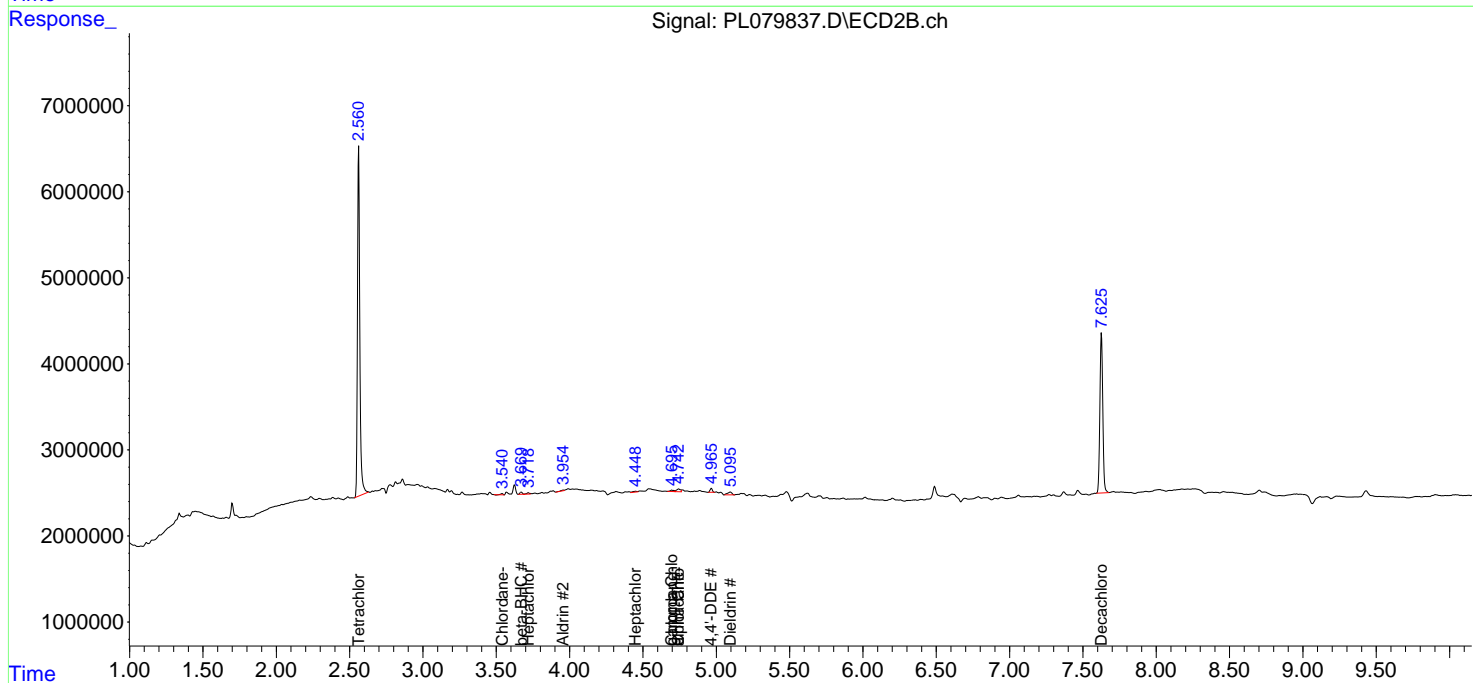
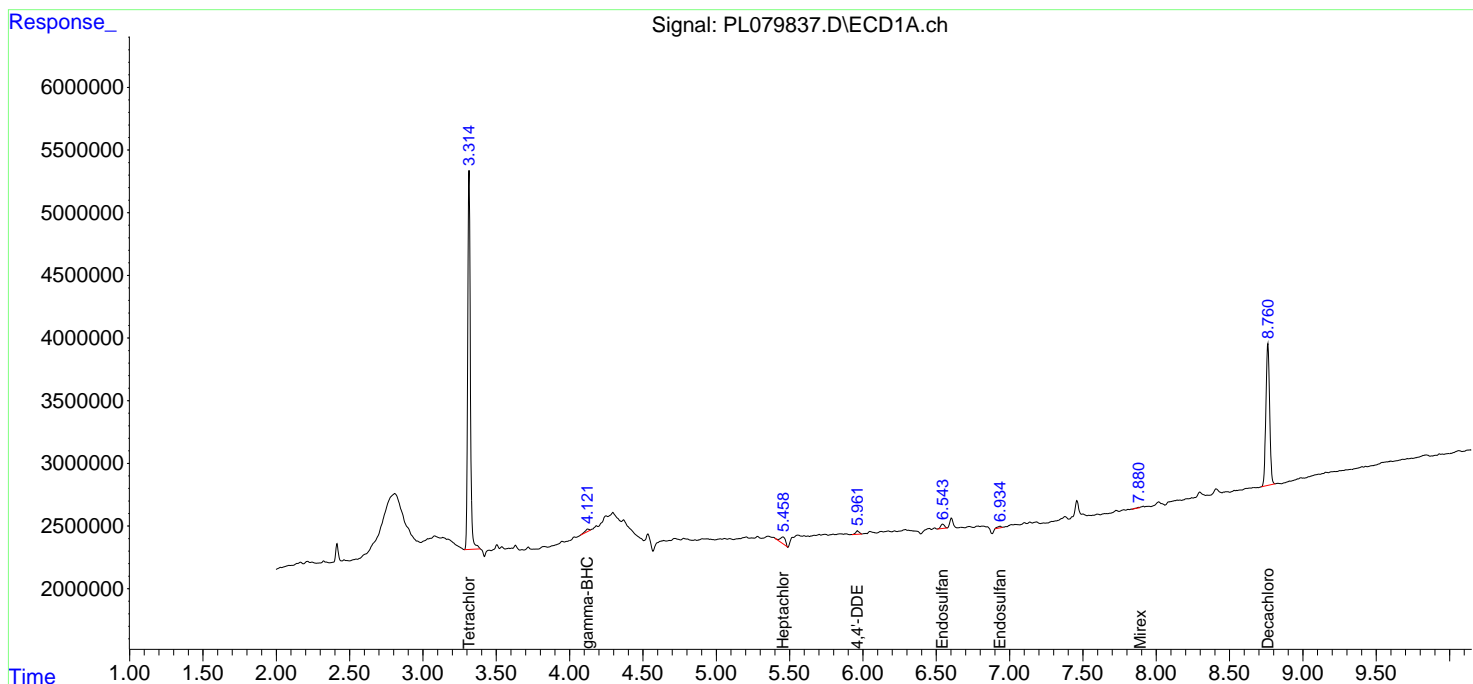
(f)=RT Delta > 1/2 Window (#)=Amounts differ by > 25% (m)=manual int.

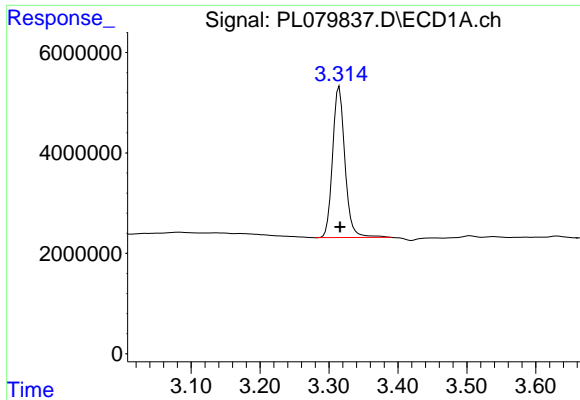
Data Path : Z:\pestpcbsrv\HPCHEM1\ECD_L\Data\PL122122\
 Data File : PL079837.D
 Signal(s) : Signal #1: ECD1A.ch Signal #2: ECD2B.ch
 Acq On : 21 Dec 2022 15:18
 Operator : AR\AJ
 Sample : N6157-04
 Misc :
 ALS Vial : 22 Sample Multiplier: 1

Instrument :
 ECD_L
 ClientSampleId :

Integration File signal 1: autoint1.e
 Integration File signal 2: autoint2.e
 Quant Time: Dec 21 21:42:26 2022
 Quant Method : Z:\pestpcbsrv\HPCHEM1\ECD_L\methods\PL122022.M
 Quant Title : GC Extractables
 QLast Update : Wed Dec 21 10:00:39 2022
 Response via : Initial Calibration
 Integrator: ChemStation

Volume Inj. : 1 µl
 Signal #1 Phase : ZB-MR2 Signal #2 Phase: ZB-MR1
 Signal #1 Info : 30M x 0.32mm x0.2 Signal #2 Info : 30M x 0.32mm x0.5µm

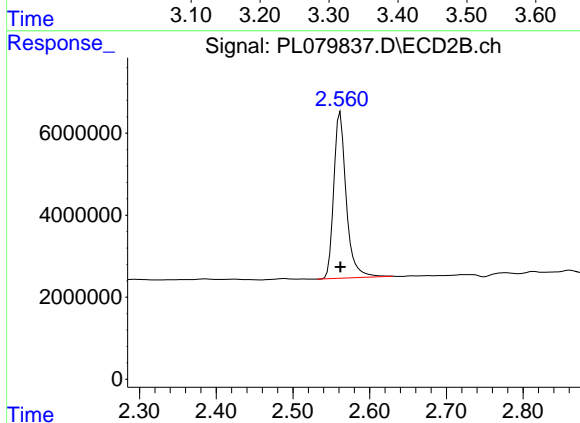




#1 Tetrachloro-m-xylene

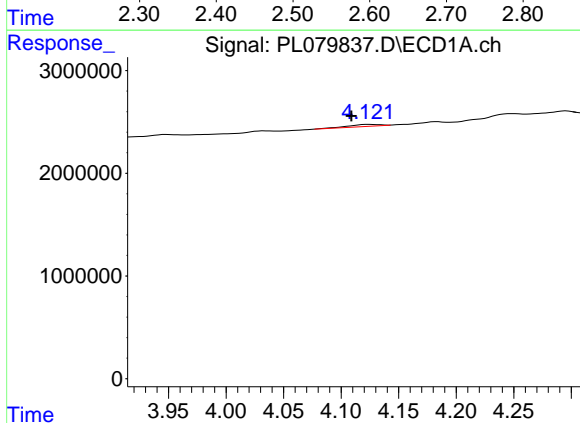
R.T.: 3.315 min
 Delta R.T.: -0.001 min
 Response: 37512926
 Conc: 17.07 ng/ml

Instrument :
 ECD_L
 ClientSampleId :



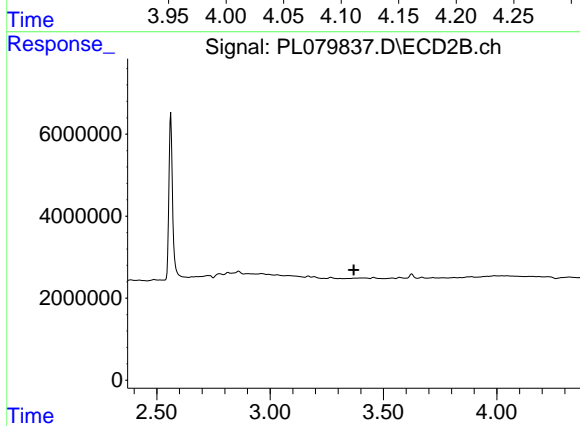
#1 Tetrachloro-m-xylene

R.T.: 2.562 min
 Delta R.T.: 0.000 min
 Response: 45766405
 Conc: 17.24 ng/ml



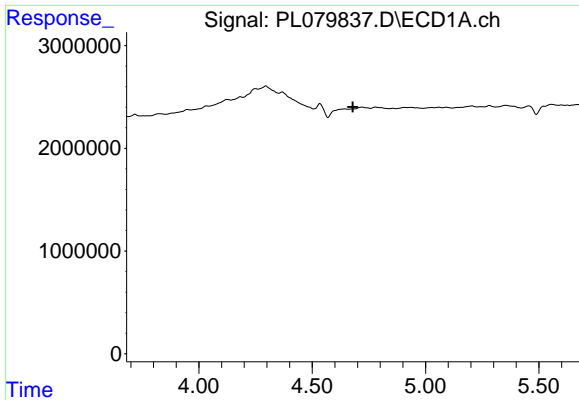
#3 gamma-BHC (Lindane)

R.T.: 4.123 min
 Delta R.T.: 0.014 min
 Response: 369155
 Conc: 0.12 ng/ml



#3 gamma-BHC (Lindane)

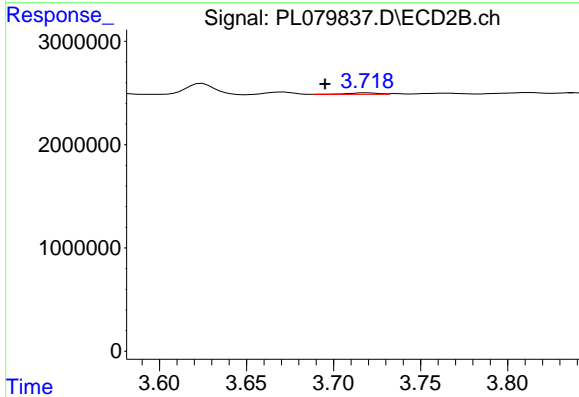
R.T.: 0.000 min
 Exp R.T. : 3.369 min
 Response: 0
 Conc: N.D.



#4 Heptachlor

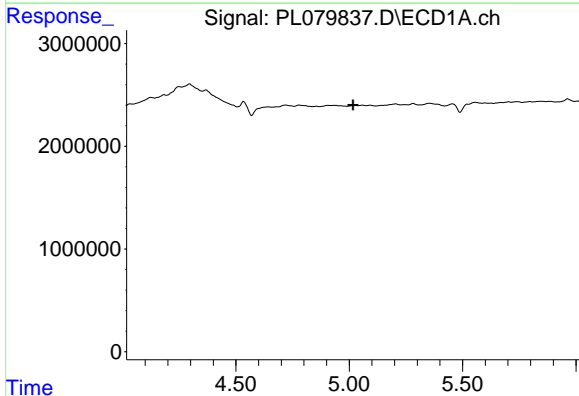
R.T.: 0.000 min
 Exp R.T. : 4.679 min
 Response: 0
 Conc: N.D.

Instrument :
 ECD_L
 ClientSampleId :



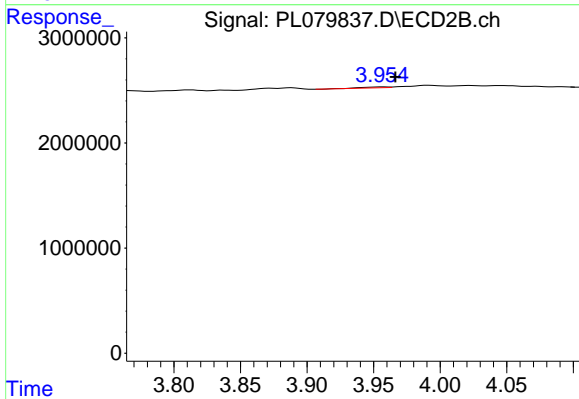
#4 Heptachlor

R.T.: 3.719 min
 Delta R.T.: 0.024 min
 Response: 195140
 Conc: 0.05 ng/ml



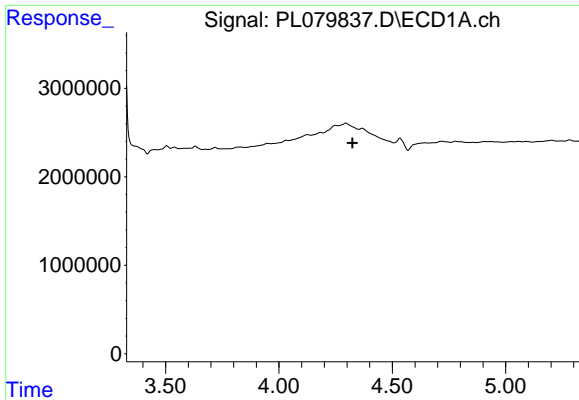
#5 Aldrin

R.T.: 0.000 min
 Exp R.T. : 5.017 min
 Response: 0
 Conc: N.D.



#5 Aldrin

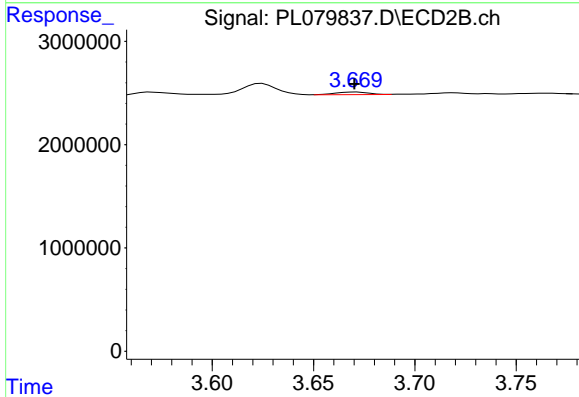
R.T.: 3.957 min
 Delta R.T.: -0.009 min
 Response: 107456
 Conc: 0.03 ng/ml



#6 beta-BHC

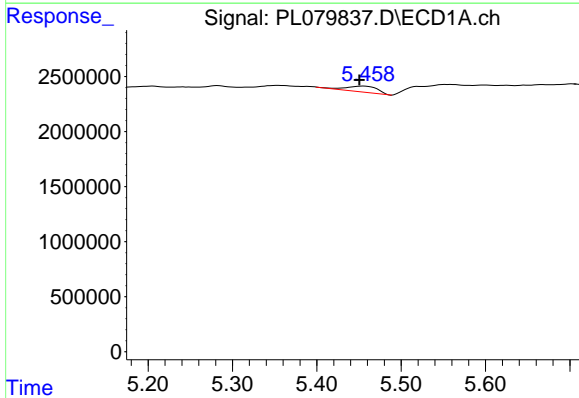
R.T.: 0.000 min
 Exp R.T.: 4.325 min
 Response: 0
 Conc: N.D.

Instrument :
 ECD_L
 ClientSampleId :



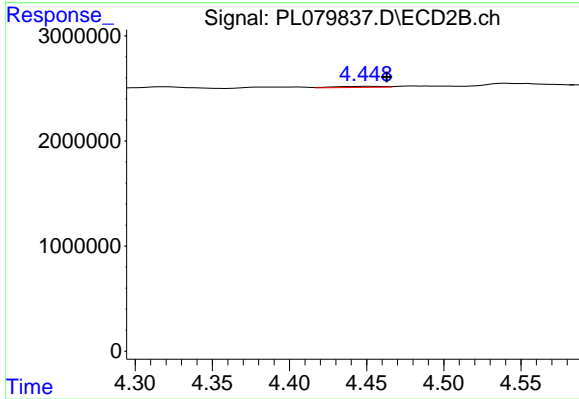
#6 beta-BHC

R.T.: 3.671 min
 Delta R.T.: 0.000 min
 Response: 284237
 Conc: 0.19 ng/ml



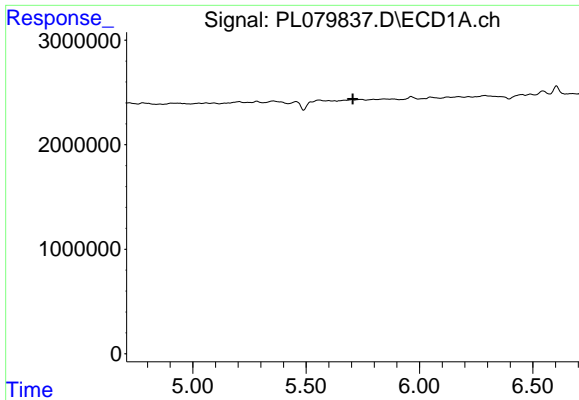
#8 Heptachlor epoxide

R.T.: 5.455 min
 Delta R.T.: 0.005 min
 Response: 1393731
 Conc: 0.53 ng/ml



#8 Heptachlor epoxide

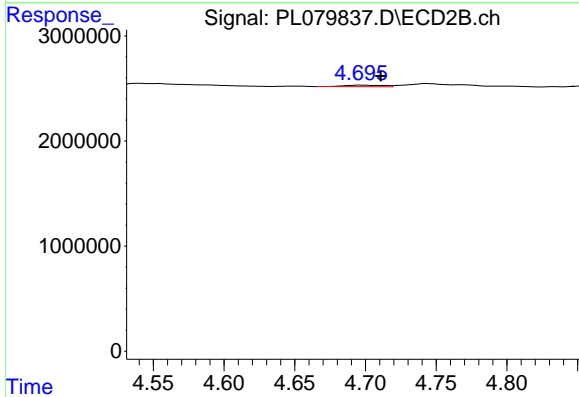
R.T.: 4.450 min
 Delta R.T.: -0.013 min
 Response: 223960
 Conc: 0.06 ng/ml



#10 gamma-Chlordane

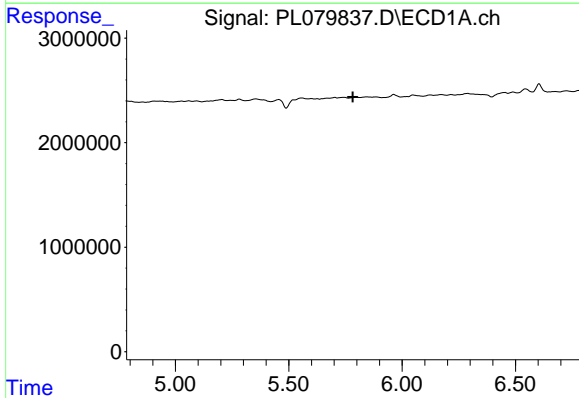
R.T.: 0.000 min
 Exp R.T.: 5.706 min
 Response: 0
 Conc: N.D.

Instrument :
 ECD_L
 ClientSampleId :



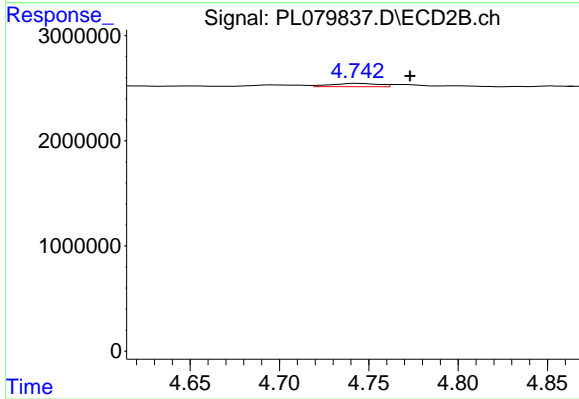
#10 gamma-Chlordane

R.T.: 4.697 min
 Delta R.T.: -0.014 min
 Response: 280885
 Conc: 0.08 ng/ml



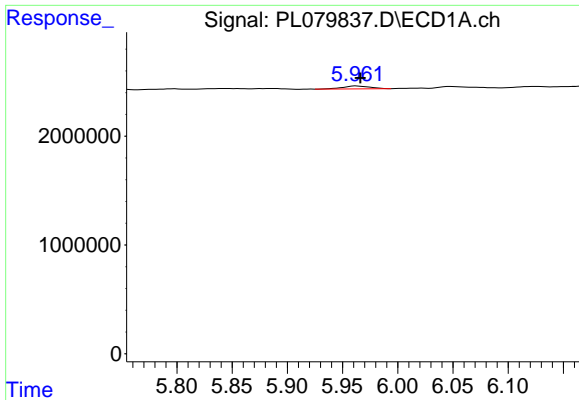
#11 alpha-Chlordane

R.T.: 0.000 min
 Exp R.T.: 5.783 min
 Response: 0
 Conc: N.D.



#11 alpha-Chlordane

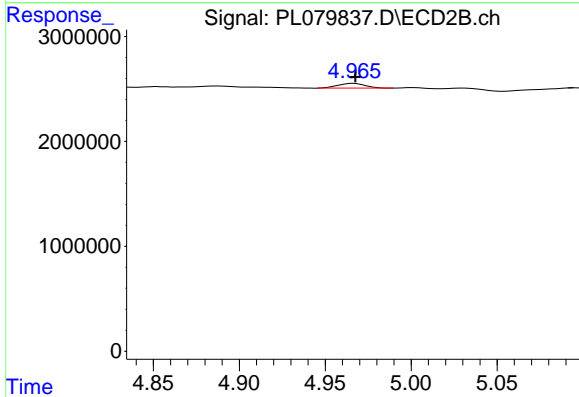
R.T.: 4.744 min
 Delta R.T.: -0.029 min
 Response: 569779
 Conc: 0.17 ng/ml



#12 4,4'-DDE

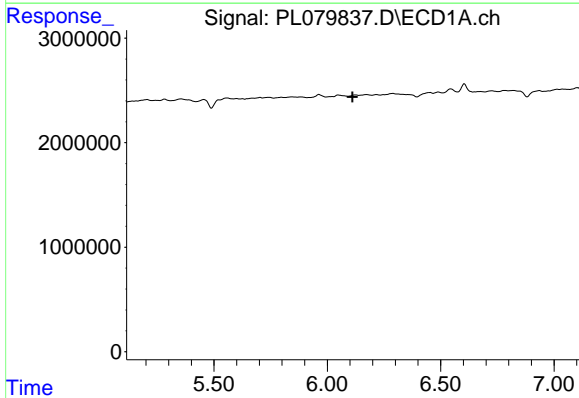
R.T.: 5.963 min
 Delta R.T.: -0.003 min
 Response: 452863
 Conc: 0.19 ng/ml

Instrument :
 ECD_L
 ClientSampleId :



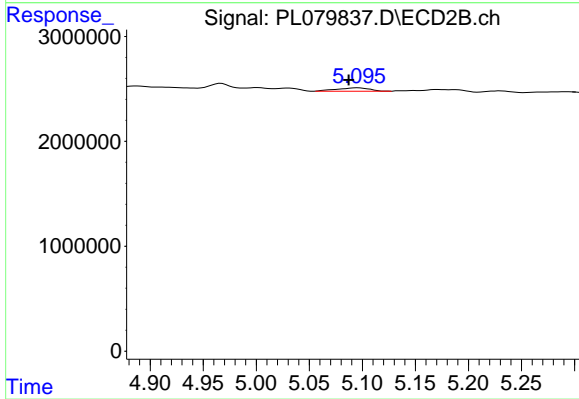
#12 4,4'-DDE

R.T.: 4.967 min
 Delta R.T.: 0.000 min
 Response: 503152
 Conc: 0.16 ng/ml



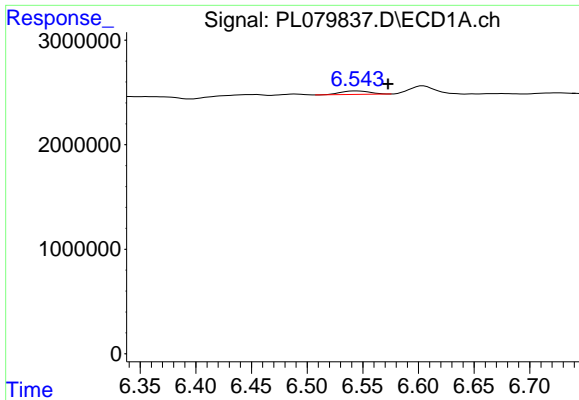
#13 Dieldrin

R.T.: 0.000 min
 Exp R.T. : 6.112 min
 Response: 0
 Conc: N.D.



#13 Dieldrin

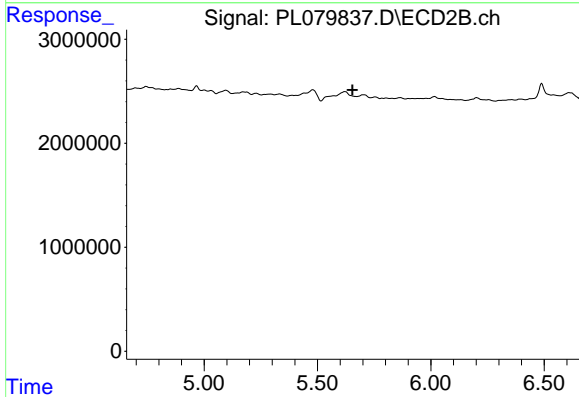
R.T.: 5.096 min
 Delta R.T.: 0.009 min
 Response: 684038
 Conc: 0.20 ng/ml



#15 Endosulfan II

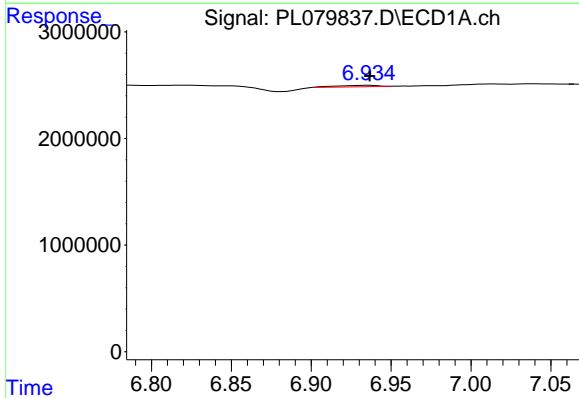
R.T.: 6.544 min
 Delta R.T.: -0.029 min
 Response: 610648
 Conc: 0.25 ng/ml

Instrument :
 ECD_L
 ClientSampleId :



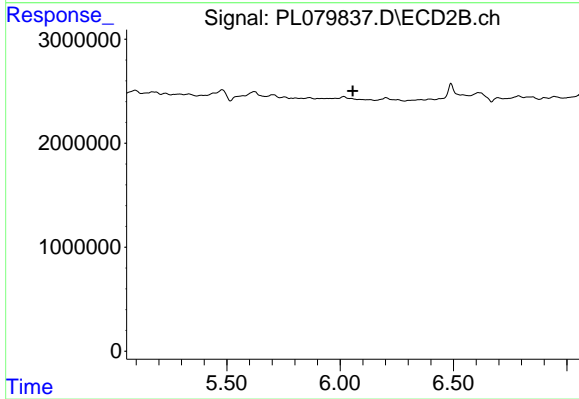
#15 Endosulfan II

R.T.: 0.000 min
 Exp R.T. : 5.655 min
 Response: 0
 Conc: N.D.



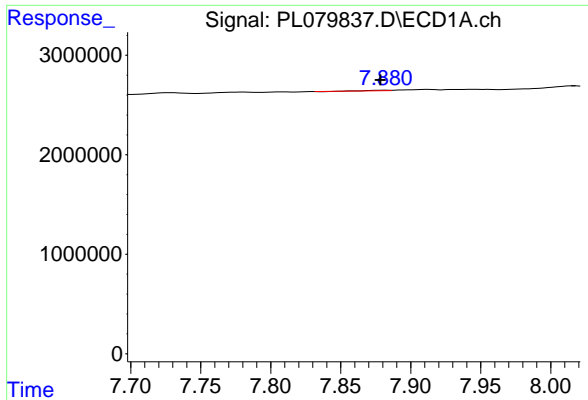
#19 Endosulfan Sulfate

R.T.: 6.936 min
 Delta R.T.: -0.001 min
 Response: 237081
 Conc: 0.10 ng/ml



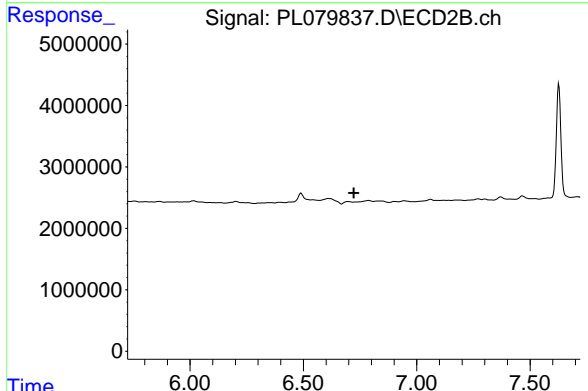
#19 Endosulfan Sulfate

R.T.: 0.000 min
 Exp R.T. : 6.056 min
 Response: 0
 Conc: N.D.

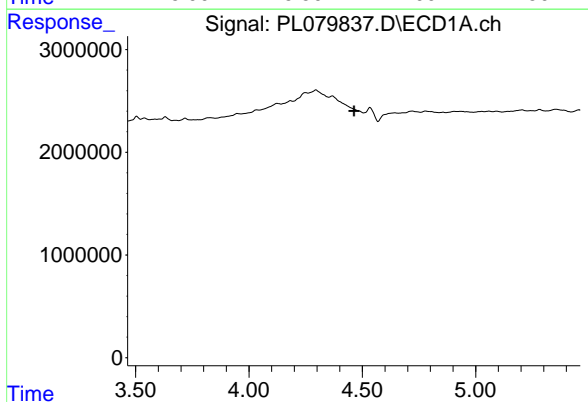


#22 Mirex
 R.T.: 7.881 min
 Delta R.T.: 0.003 min
 Response: 45514
 Conc: 0.02 ng/ml

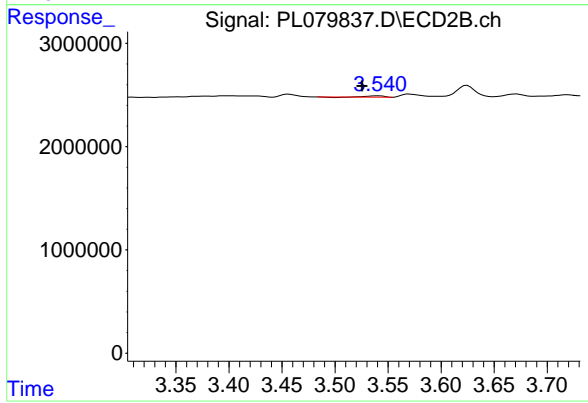
Instrument :
 ECD_L
 ClientSampleId :



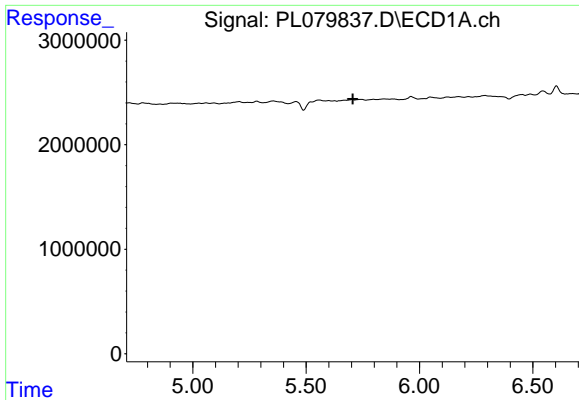
#22 Mirex
 R.T.: 0.000 min
 Exp R.T. : 6.723 min
 Response: 0
 Conc: N.D.



#23 Chlordane-1
 R.T.: 0.000 min
 Exp R.T. : 4.464 min
 Response: 0
 Conc: N.D.



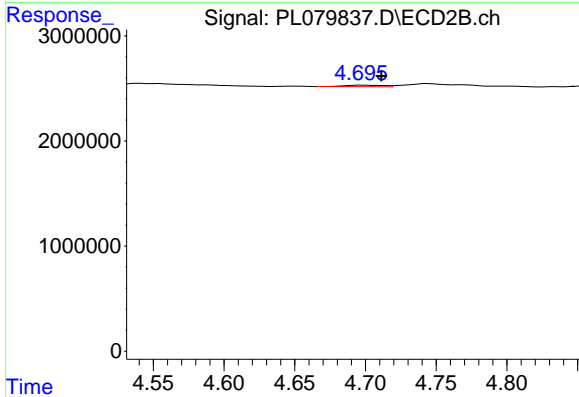
#23 Chlordane-1
 R.T.: 3.541 min
 Delta R.T.: 0.016 min
 Response: 128826
 Conc: 1.23 ng/ml



#25 Chlordane-3

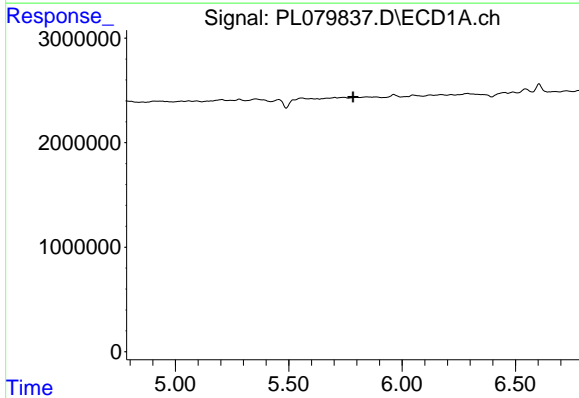
R.T.: 0.000 min
 Exp R.T.: 5.706 min
 Response: 0
 Conc: N.D.

Instrument :
 ECD_L
 ClientSampleId :



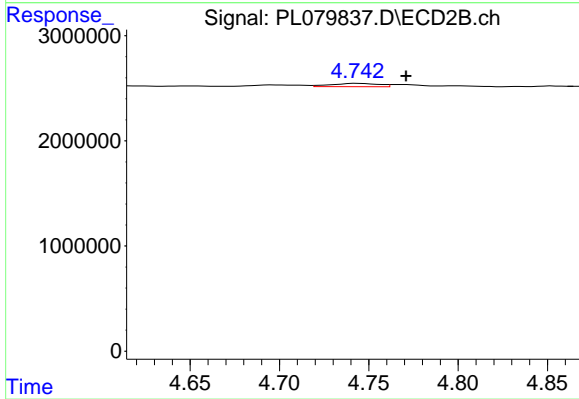
#25 Chlordane-3

R.T.: 4.697 min
 Delta R.T.: -0.015 min
 Response: 280885
 Conc: 0.83 ng/ml



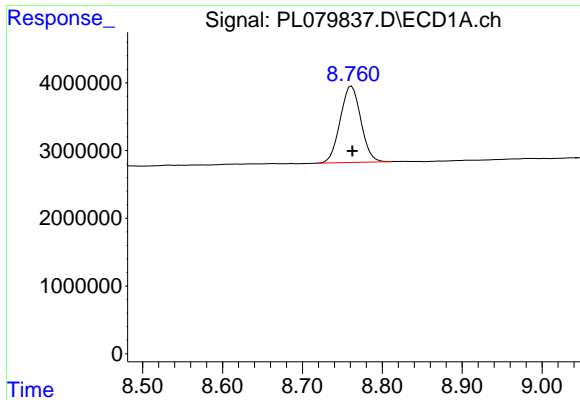
#26 Chlordane-4

R.T.: 0.000 min
 Exp R.T.: 5.784 min
 Response: 0
 Conc: N.D.



#26 Chlordane-4

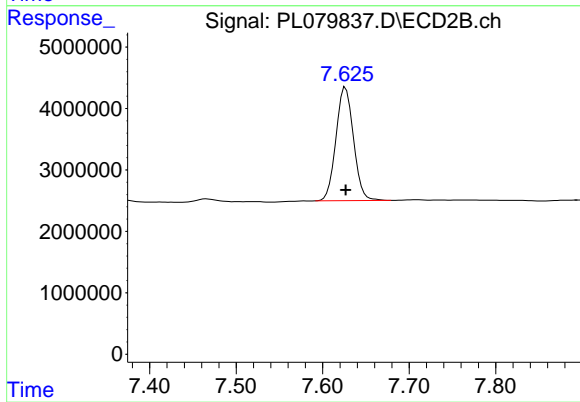
R.T.: 4.744 min
 Delta R.T.: -0.027 min
 Response: 569779
 Conc: 1.57 ng/ml



#28 Decachlorobiphenyl

R.T.: 8.761 min
 Delta R.T.: 0.000 min
 Response: 20254136
 Conc: 10.92 ng/ml

Instrument :
 ECD_L
 ClientSampleId :



#28 Decachlorobiphenyl

R.T.: 7.627 min
 Delta R.T.: 0.000 min
 Response: 25930409
 Conc: 10.80 ng/ml