

Data Path : Z:\pestpcbsrv\HPCHEM1\ECD_L\Data\PL122123\
 Data File : PL087314.D
 Signal(s) : Signal #1: ECD1A.ch Signal #2: ECD2B.ch
 Acq On : 21 Dec 2023 11:00
 Operator : AR\AJ
 Sample : HEXANE
 Misc :
 ALS Vial : 1 Sample Multiplier: 1

Instrument :
 ECD_L
 ClientSampleId :

Integration File signal 1: autoint1.e
 Integration File signal 2: autoint2.e
 Quant Time: Dec 22 00:25:15 2023
 Quant Method : Z:\pestpcbsrv\HPCHEM1\ECD_L\methods\PL121523.M
 Quant Title : GC Extractables
 QLast Update : Sat Dec 16 04:03:23 2023
 Response via : Initial Calibration
 Integrator: ChemStation

Volume Inj. : 1 µl
 Signal #1 Phase : ZB-MR2 Signal #2 Phase: ZB-MR1
 Signal #1 Info : 30M x 0.32mm x0.2 Signal #2 Info : 30M x 0.32mm x0.5µm

Compound	RT#1	RT#2	Resp#1	Resp#2	ng/ml	ng/ml

System Monitoring Compounds						
1) SA Tetrachlo...	3.454f	2.687	2499383	167097	0.664	0.099 #
2) SA Decachlor...	0.000	7.888	0	344991	N.D.	0.204 #
Target Compounds						
2) A alpha-BHC	0.000	3.203	0	13667	N.D.	0.006 #
3) MA gamma-BHC...	0.000	3.538f	0	763081	N.D.	0.315 #
7) B delta-BHC	4.670	0.000	4738678	0	0.906	N.D. #
8) B Heptachlo...	5.577	4.624f	59436753	127343	12.612	0.057 #
9) A Endosulfan I	5.955f	5.029	76875637	25440991	17.212	11.772 #
11) B alpha-Chl...	0.000	4.995f	0	42371807	N.D.	18.359 #
13) MA Dieldrin	0.000	5.295	0	11430176	N.D.	5.131 #
14) MA Endrin	0.000	5.579	0	6107048	N.D.	3.060 #
17) MA 4,4'-DDT	6.963f	0.000	2297013	0	0.611	N.D. #
18) B Endrin al...	0.000	6.056	0	231254	N.D.	0.158 #
19) B Endosulfa...	0.000	6.248f	0	275244	N.D.	0.146 #
23) Chlordane-1	0.000	3.702f	0	463361	N.D.	7.469 #
26) Chlordane-4	5.955f	4.995f	76875637	42371807	89.906	181.996 #

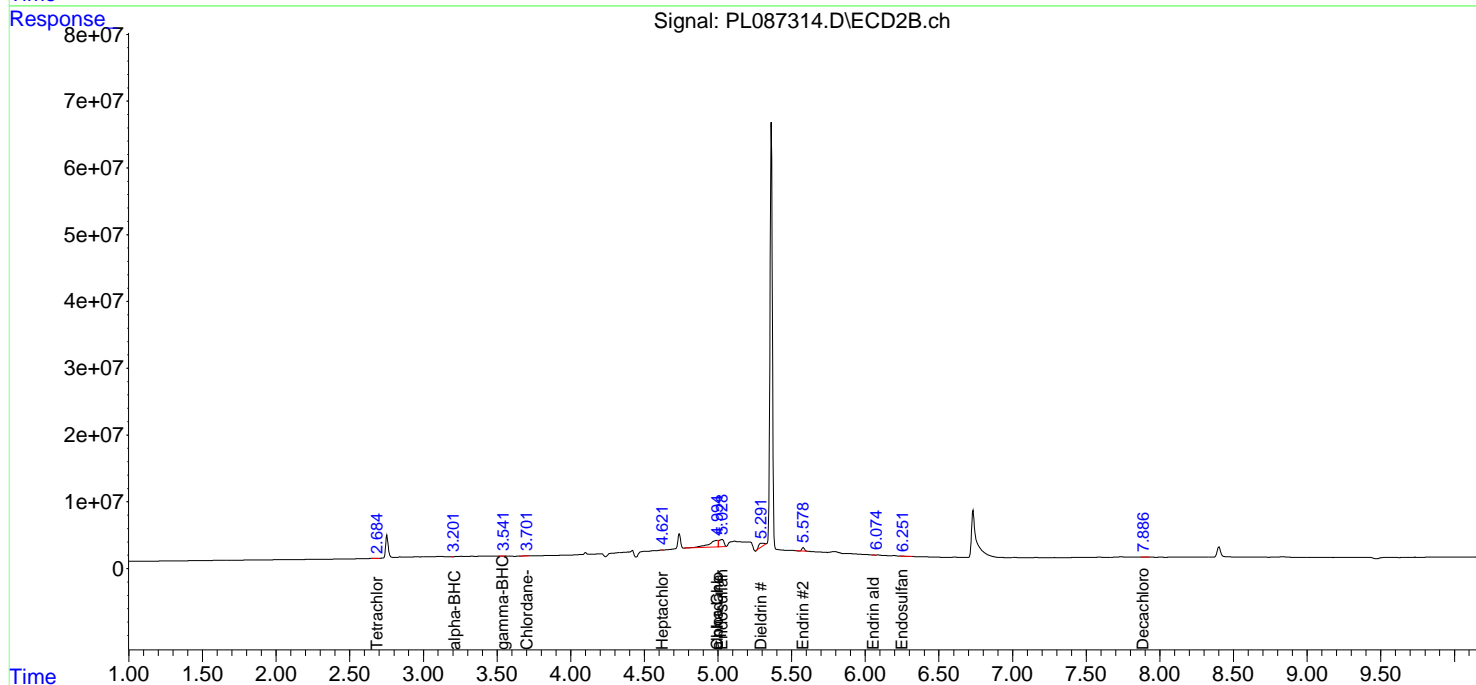
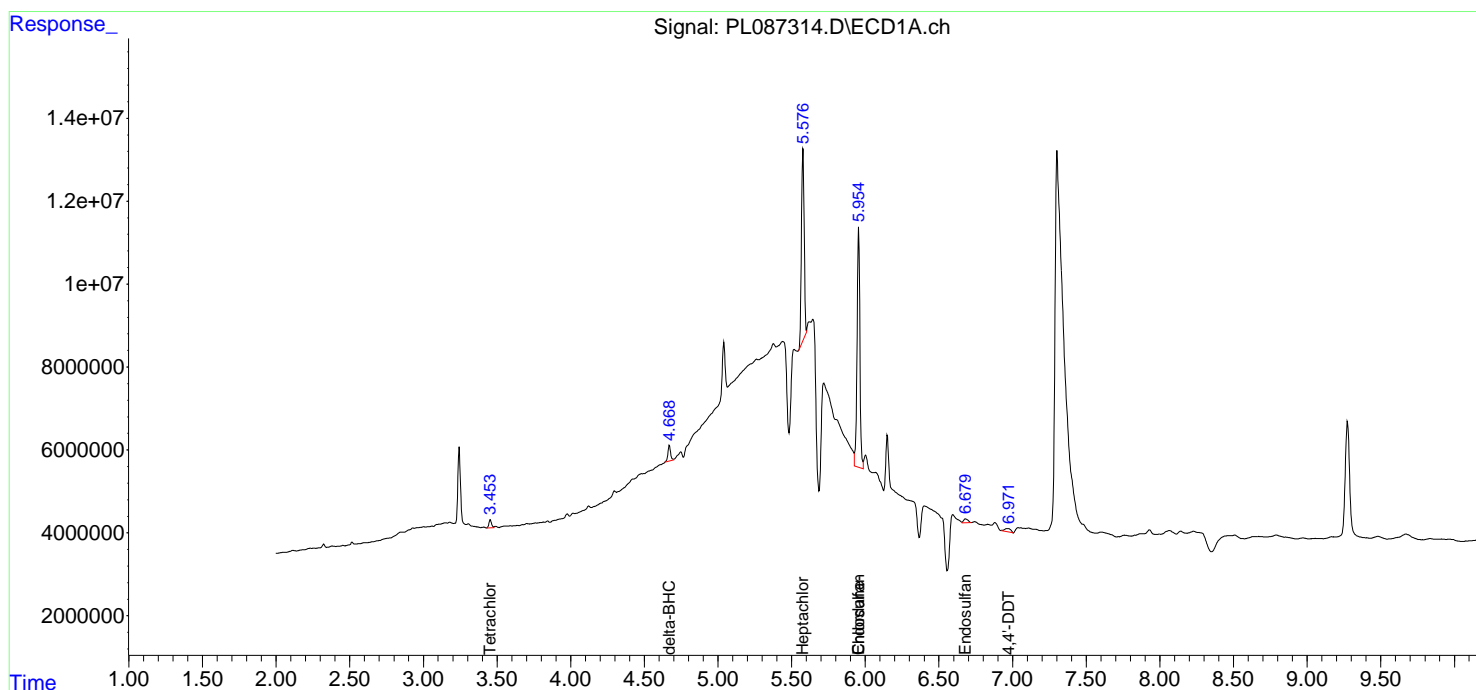
(f)=RT Delta > 1/2 Window (#)=Amounts differ by > 25% (m)=manual int.

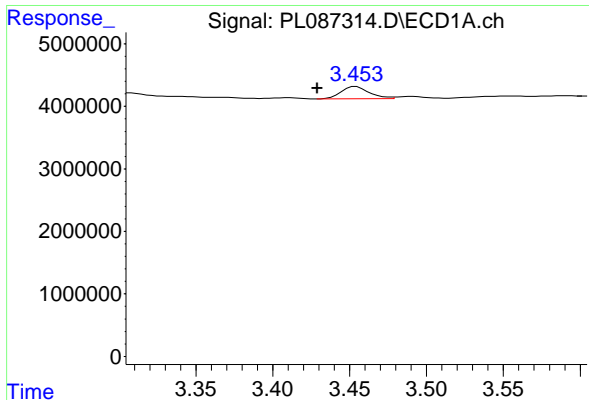
Data Path : Z:\pestpcbsrv\HPCHEM1\ECD_L\Data\PL122123\
 Data File : PL087314.D
 Signal(s) : Signal #1: ECD1A.ch Signal #2: ECD2B.ch
 Acq On : 21 Dec 2023 11:00
 Operator : AR\AJ
 Sample : HEXANE
 Misc :
 ALS Vial : 1 Sample Multiplier: 1

Instrument :
 ECD_L
 ClientSampleId :

Integration File signal 1: autoint1.e
 Integration File signal 2: autoint2.e
 Quant Time: Dec 22 00:25:15 2023
 Quant Method : Z:\pestpcbsrv\HPCHEM1\ECD_L\methods\PL121523.M
 Quant Title : GC Extractables
 QLast Update : Sat Dec 16 04:03:23 2023
 Response via : Initial Calibration
 Integrator: ChemStation

Volume Inj. : 1 µl
 Signal #1 Phase : ZB-MR2 Signal #2 Phase: ZB-MR1
 Signal #1 Info : 30M x 0.32mm x0.2 Signal #2 Info : 30M x 0.32mm x0.5µm

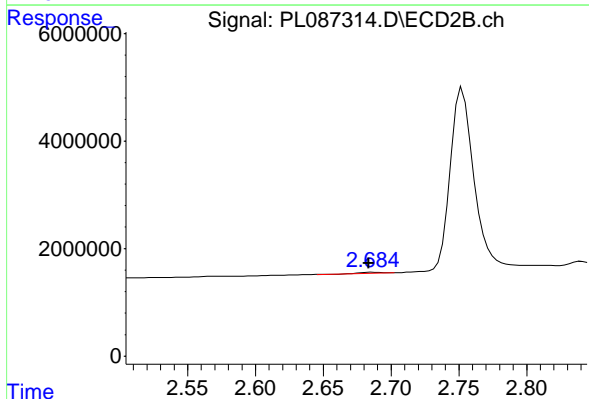




#1 Tetrachloro-m-xylene

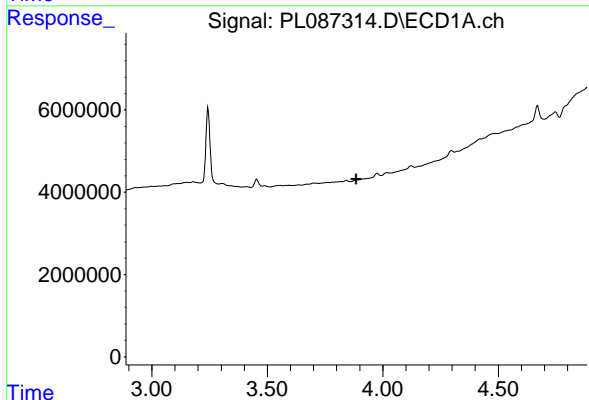
R.T.: 3.454 min
 Delta R.T.: 0.025 min
 Response: 2499383
 Conc: 0.66 ng/ml

Instrument :
 ECD_L
 ClientSampleId :



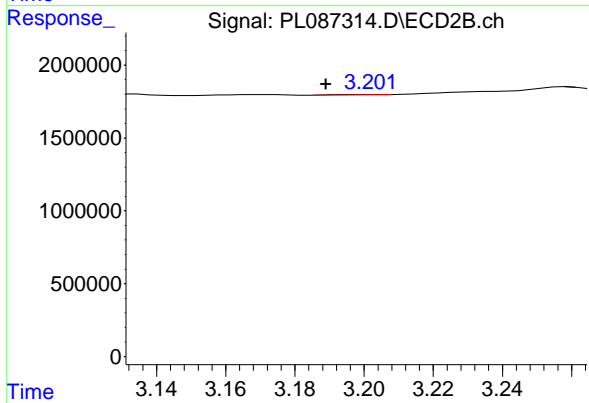
#1 Tetrachloro-m-xylene

R.T.: 2.687 min
 Delta R.T.: 0.003 min
 Response: 167097
 Conc: 0.10 ng/ml



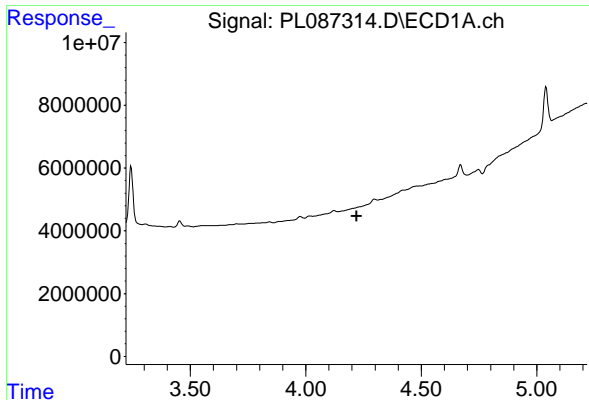
#2 alpha-BHC

R.T.: 0.000 min
 Exp R.T. : 3.885 min
 Response: 0
 Conc: N.D.



#2 alpha-BHC

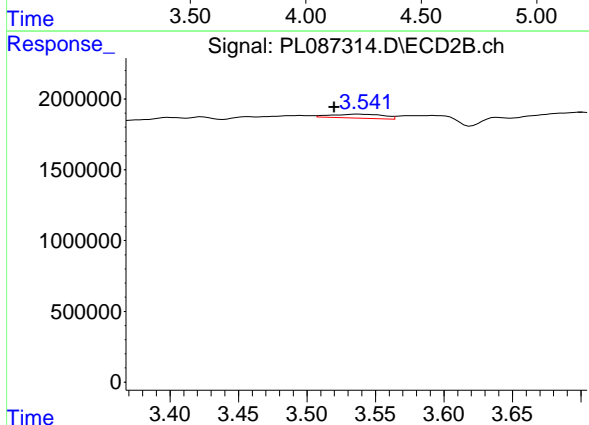
R.T.: 3.203 min
 Delta R.T.: 0.014 min
 Response: 13667
 Conc: 0.01 ng/ml



#3 gamma-BHC (Lindane)

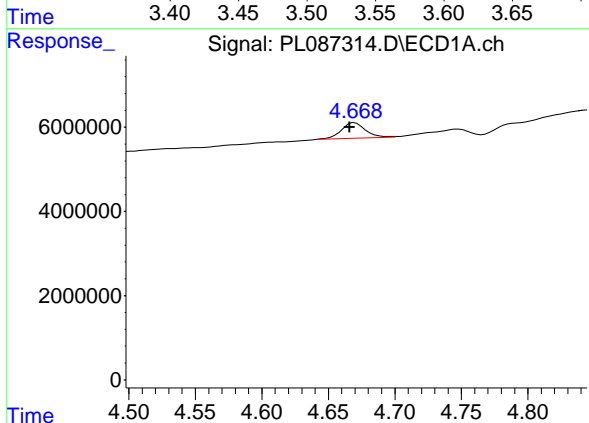
R.T.: 0.000 min
 Exp R.T. : 4.220 min
 Response: 0
 Conc: N.D.

Instrument :
 ECD_L
 ClientSampleId :



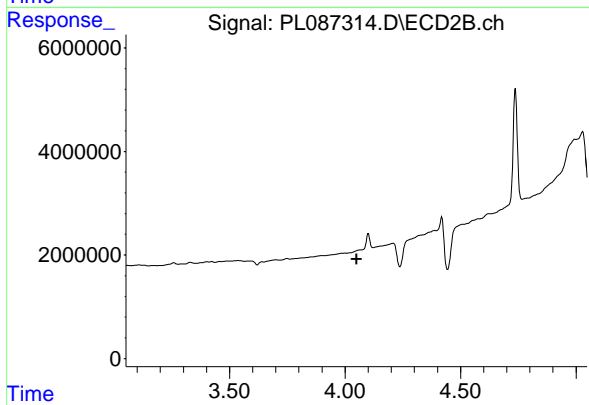
#3 gamma-BHC (Lindane)

R.T.: 3.538 min
 Delta R.T.: 0.018 min
 Response: 763081
 Conc: 0.32 ng/ml



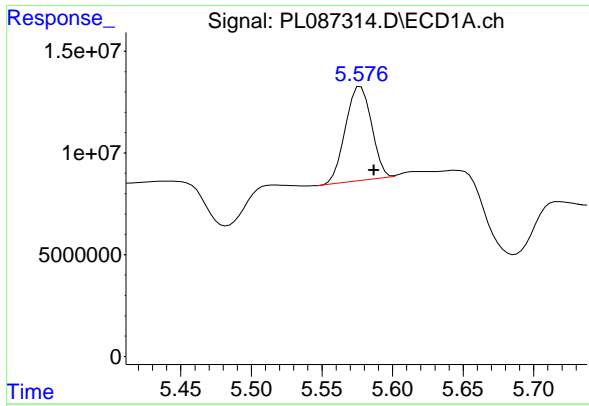
#7 delta-BHC

R.T.: 4.670 min
 Delta R.T.: 0.004 min
 Response: 4738678
 Conc: 0.91 ng/ml



#7 delta-BHC

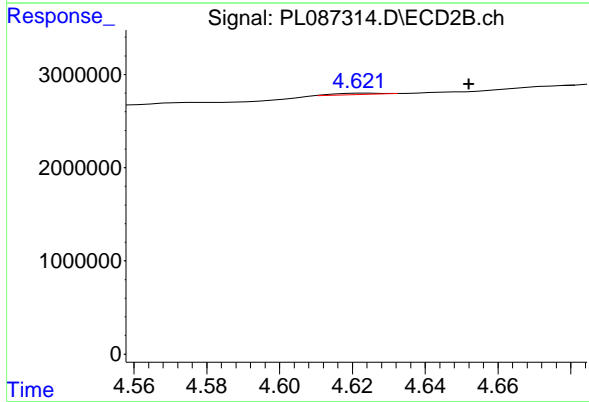
R.T.: 0.000 min
 Exp R.T. : 4.051 min
 Response: 0
 Conc: N.D.



#8 Heptachlor epoxide

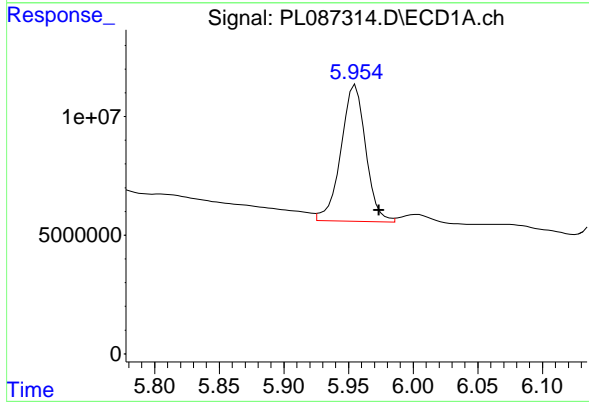
R.T.: 5.577 min
 Delta R.T.: -0.009 min
 Response: 59436753
 Conc: 12.61 ng/ml

Instrument :
 ECD_L
 ClientSampleId :



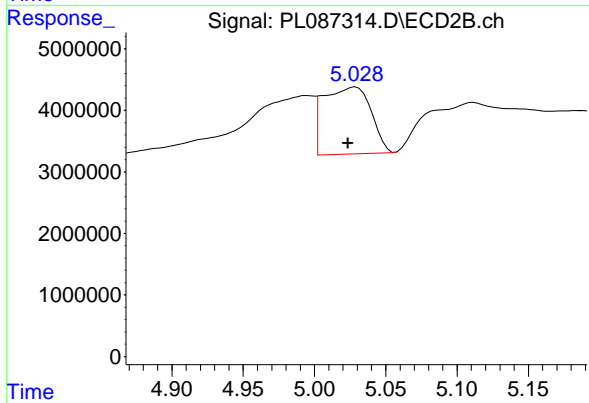
#8 Heptachlor epoxide

R.T.: 4.624 min
 Delta R.T.: -0.028 min
 Response: 127343
 Conc: 0.06 ng/ml



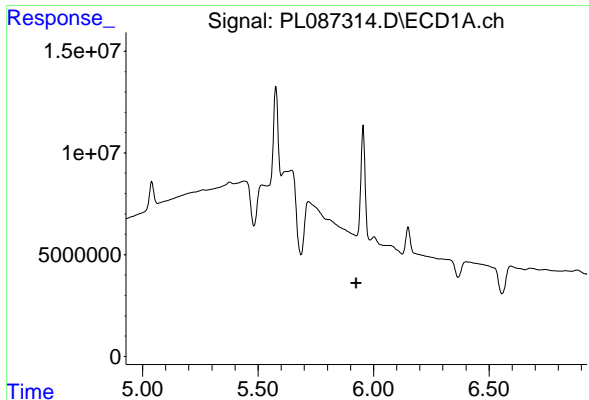
#9 Endosulfan I

R.T.: 5.955 min
 Delta R.T.: -0.018 min
 Response: 76875637
 Conc: 17.21 ng/ml



#9 Endosulfan I

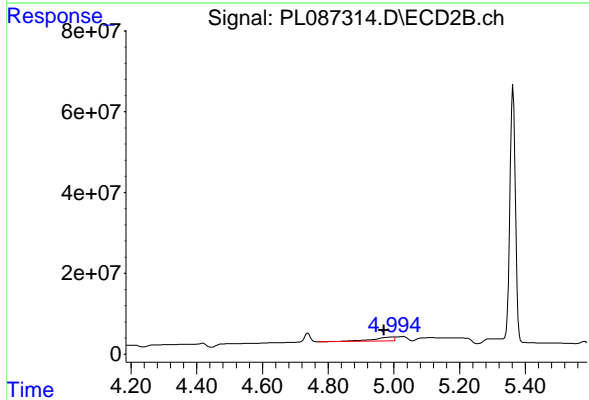
R.T.: 5.029 min
 Delta R.T.: 0.005 min
 Response: 25440991
 Conc: 11.77 ng/ml



#11 alpha-Chlordane

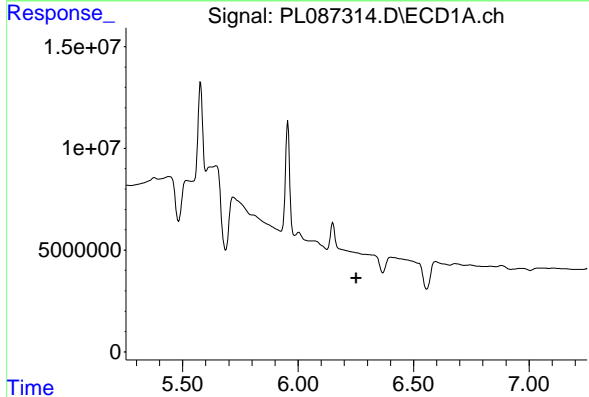
R.T.: 0.000 min
 Exp R.T.: 5.924 min
 Response: 0
 Conc: N.D.

Instrument :
 ECD_L
 ClientSampleId :



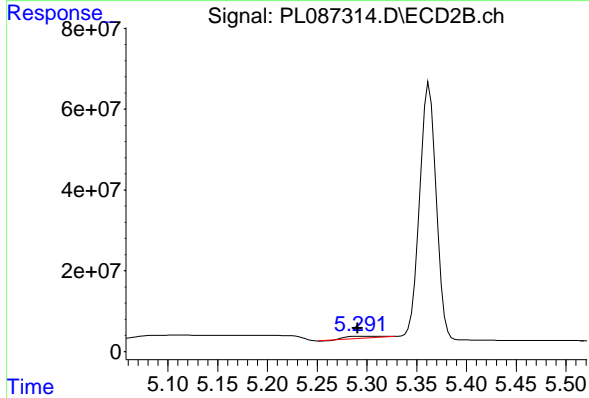
#11 alpha-Chlordane

R.T.: 4.995 min
 Delta R.T.: 0.025 min
 Response: 42371807
 Conc: 18.36 ng/ml



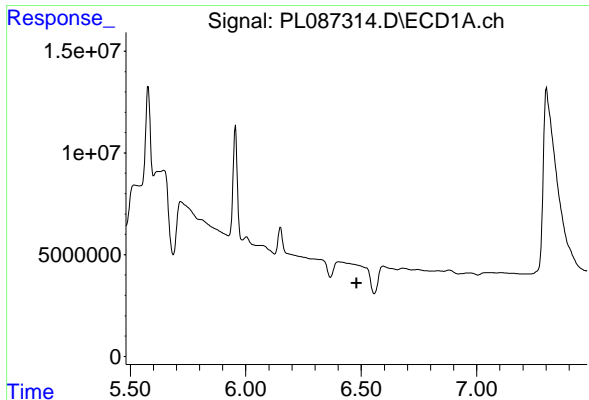
#13 Dieldrin

R.T.: 0.000 min
 Exp R.T.: 6.251 min
 Response: 0
 Conc: N.D.



#13 Dieldrin

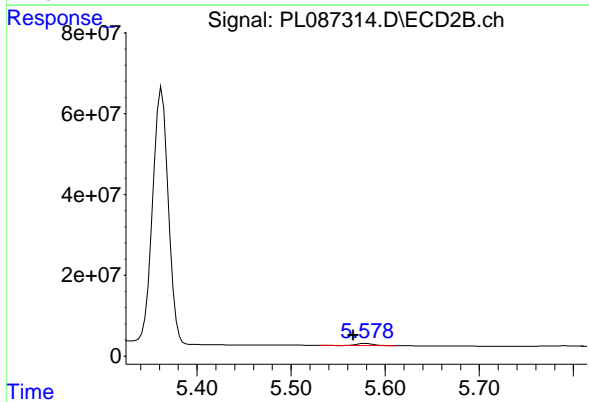
R.T.: 5.295 min
 Delta R.T.: 0.004 min
 Response: 11430176
 Conc: 5.13 ng/ml



#14 Endrin

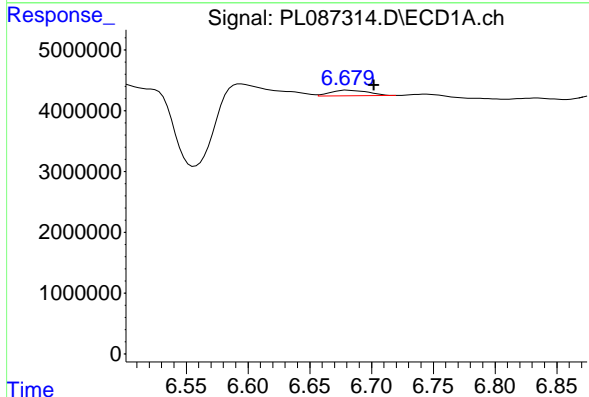
R.T.: 0.000 min
 Exp R.T.: 6.480 min
 Response: 0
 Conc: N.D.

Instrument :
 ECD_L
 ClientSampleId :



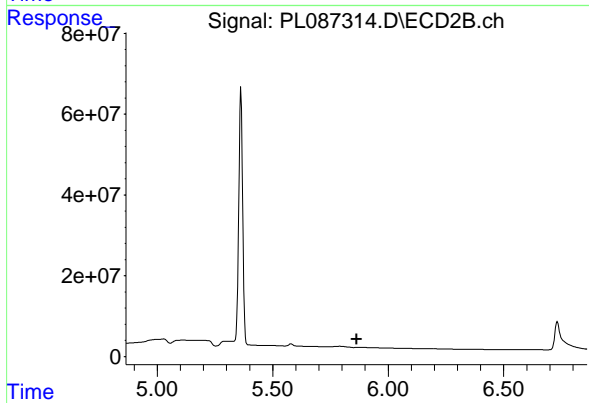
#14 Endrin

R.T.: 5.579 min
 Delta R.T.: 0.013 min
 Response: 6107048
 Conc: 3.06 ng/ml



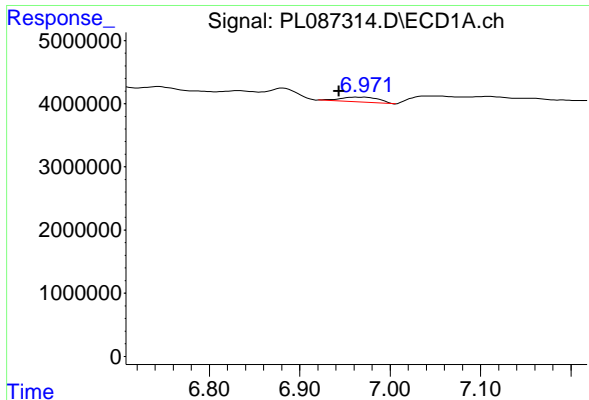
#15 Endosulfan II

R.T.: 6.680 min
 Delta R.T.: -0.022 min
 Response: 1960430
 Conc: 0.49 ng/ml



#15 Endosulfan II

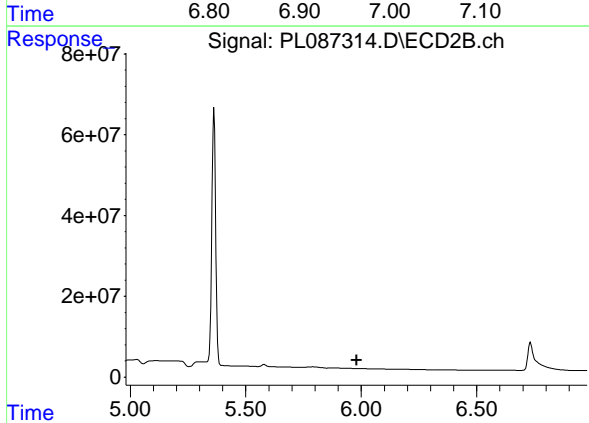
R.T.: 5.873 min
 Delta R.T.: 0.010 min
 Response: -1779211
 Conc: N.D.



#17 4,4' -DDT

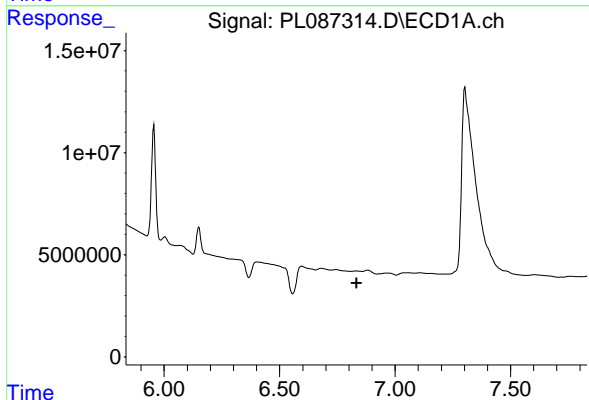
R.T.: 6.963 min
 Delta R.T.: 0.020 min
 Response: 2297013
 Conc: 0.61 ng/ml

Instrument :
 ECD_L
 ClientSampleId :



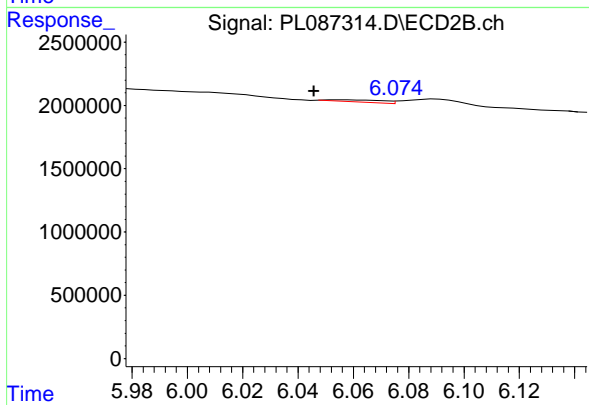
#17 4,4' -DDT

R.T.: 0.000 min
 Exp R.T. : 5.980 min
 Response: 0
 Conc: N.D.



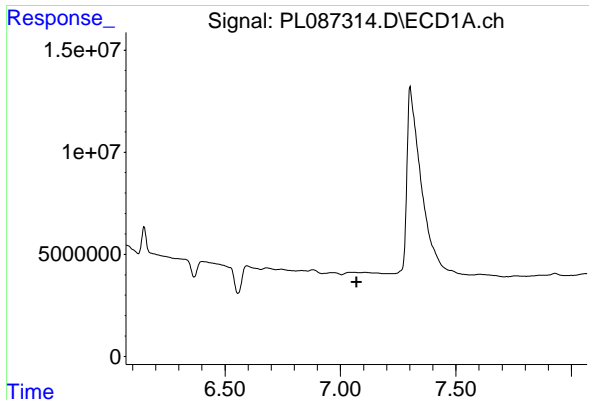
#18 Endrin aldehyde

R.T.: 0.000 min
 Exp R.T. : 6.833 min
 Response: 0
 Conc: N.D.



#18 Endrin aldehyde

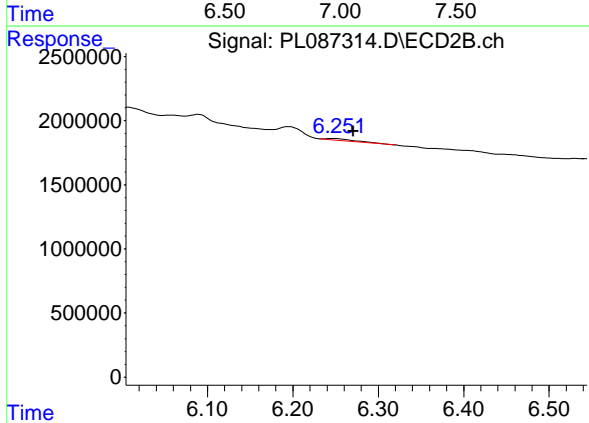
R.T.: 6.056 min
 Delta R.T.: 0.011 min
 Response: 231254
 Conc: 0.16 ng/ml



#19 Endosulfan Sulfate

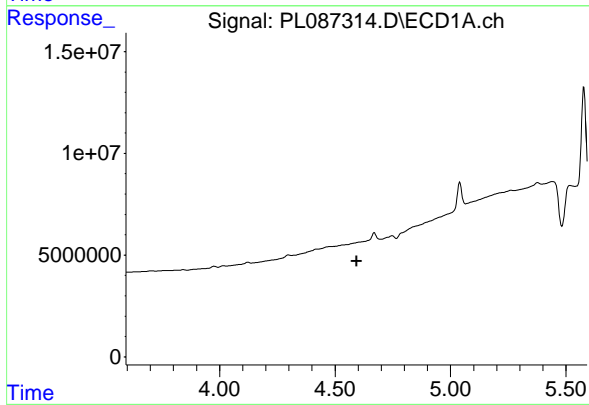
R.T.: 0.000 min
 Exp R.T.: 7.070 min
 Response: 0
 Conc: N.D.

Instrument :
 ECD_L
 ClientSampleId :



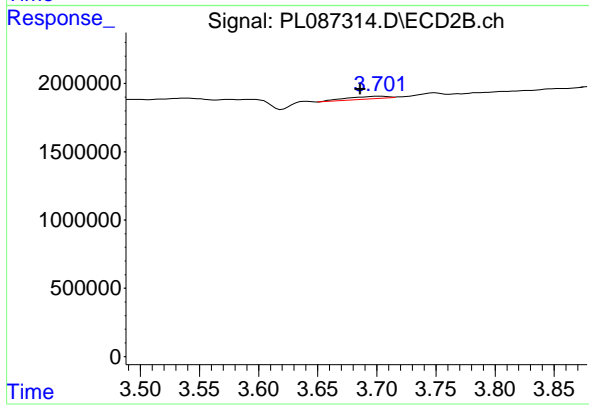
#19 Endosulfan Sulfate

R.T.: 6.248 min
 Delta R.T.: -0.022 min
 Response: 275244
 Conc: 0.15 ng/ml



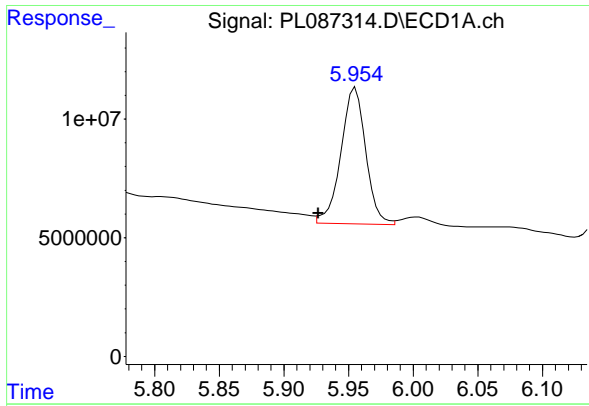
#23 Chlordane-1

R.T.: 0.000 min
 Exp R.T.: 4.594 min
 Response: 0
 Conc: N.D.



#23 Chlordane-1

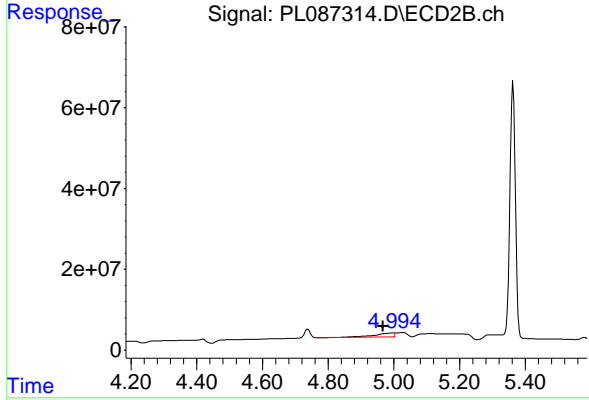
R.T.: 3.702 min
 Delta R.T.: 0.016 min
 Response: 463361
 Conc: 7.47 ng/ml



#26 Chlordane-4

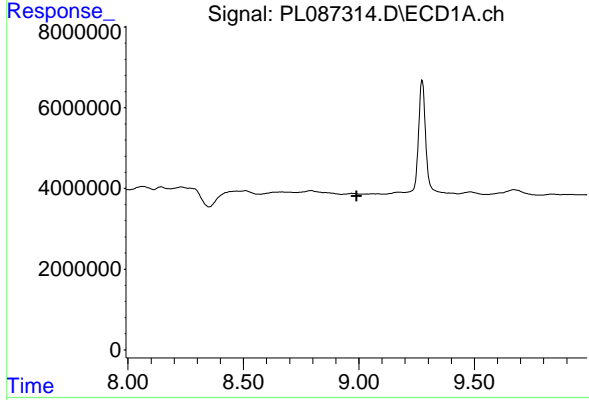
R.T.: 5.955 min
 Delta R.T.: 0.029 min
 Response: 76875637
 Conc: 89.91 ng/ml

Instrument :
 ECD_L
 ClientSampleId :



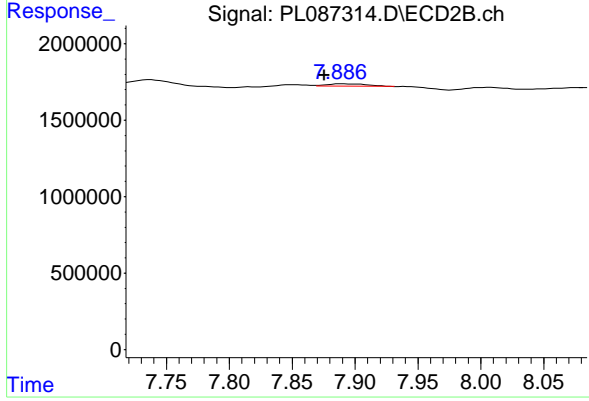
#26 Chlordane-4

R.T.: 4.995 min
 Delta R.T.: 0.028 min
 Response: 42371807
 Conc: 182.00 ng/ml



#28 Decachlorobiphenyl

R.T.: 0.000 min
 Exp R.T. : 8.989 min
 Response: 0
 Conc: N.D.



#28 Decachlorobiphenyl

R.T.: 7.888 min
 Delta R.T.: 0.012 min
 Response: 344991
 Conc: 0.20 ng/ml