

Data Path : Z:\pestpcbsrv\HPCHEM1\ECD_L\Data\PL122220\
 Data File : PL063739.D
 Signal(s) : Signal #1: ECD1A.ch Signal #2: ECD2B.ch
 Acq On : 22 Dec 2020 09:04
 Operator : AR\AJ
 Sample : PEM
 Misc :
 ALS Vial : 3 Sample Multiplier: 1

Instrument :
 ECD_L
 ClientSampleId :

Integration File signal 1: autoint1.e
 Integration File signal 2: autoint2.e
 Quant Time: Dec 22 14:03:19 2020
 Quant Method : Z:\pestpcbsrv\HPCHEM1\ECD_L\methods\PL122220.M
 Quant Title : GC Extractables
 QLast Update : Tue Dec 22 14:02:42 2020
 Response via : Initial Calibration
 Integrator: ChemStation

Volume Inj. : 1 µl
 Signal #1 Phase : ZB-MR1 Signal #2 Phase: ZB-MR1
 Signal #1 Info : 30M x 0.32mm x0.2 Signal #2 Info : 30M x 0.32mm x0.5µm

	Compound	RT#1	RT#2	Resp#1	Resp#2	ng/ml	ng/ml

System Monitoring Compounds							
1)	SA Tetrachlo...	3.440	4.112	61783058	51299084	20.608	20.093
28)	SA Decachlor...	8.183	9.273	57206869	43122093	20.764	21.872
Target Compounds							
2)	A alpha-BHC	3.874	4.513	47914867	31988837	9.598	8.880
3)	MA gamma-BHC...	4.155	4.805	44766045	31998326	9.793	9.380
6)	B beta-BHC	4.404	4.981	20032774	24289491	10.365	13.838 #
9)	A Endosulfan I	5.498f	0.000	10246772	0	2.959	N.D. #
10)	B gamma-Chl...	0.000	6.258	0	3738585	N.D.	1.351 #
14)	MA Endrin	5.977	6.868	158.1E6	99082570	54.244	51.057
16)	A 4,4'-DDD	6.108	6.985	8048709	6423560	2.752	3.038
17)	MA 4,4'-DDT	6.350	7.285	290.7E6	201.9E6	109.694	103.771
18)	B Endrin al...	6.420	0.000	3621075	0	1.308	N.D. #
20)	A Methoxychlor	6.898	7.744	329.8E6	255.3E6	250.996	241.982
21)	B Endrin ke...	7.118	7.908	7270109	5277574	2.091	2.140
25)	Chlordane-3	0.000	6.258	0	3738585	N.D.	10.911 #

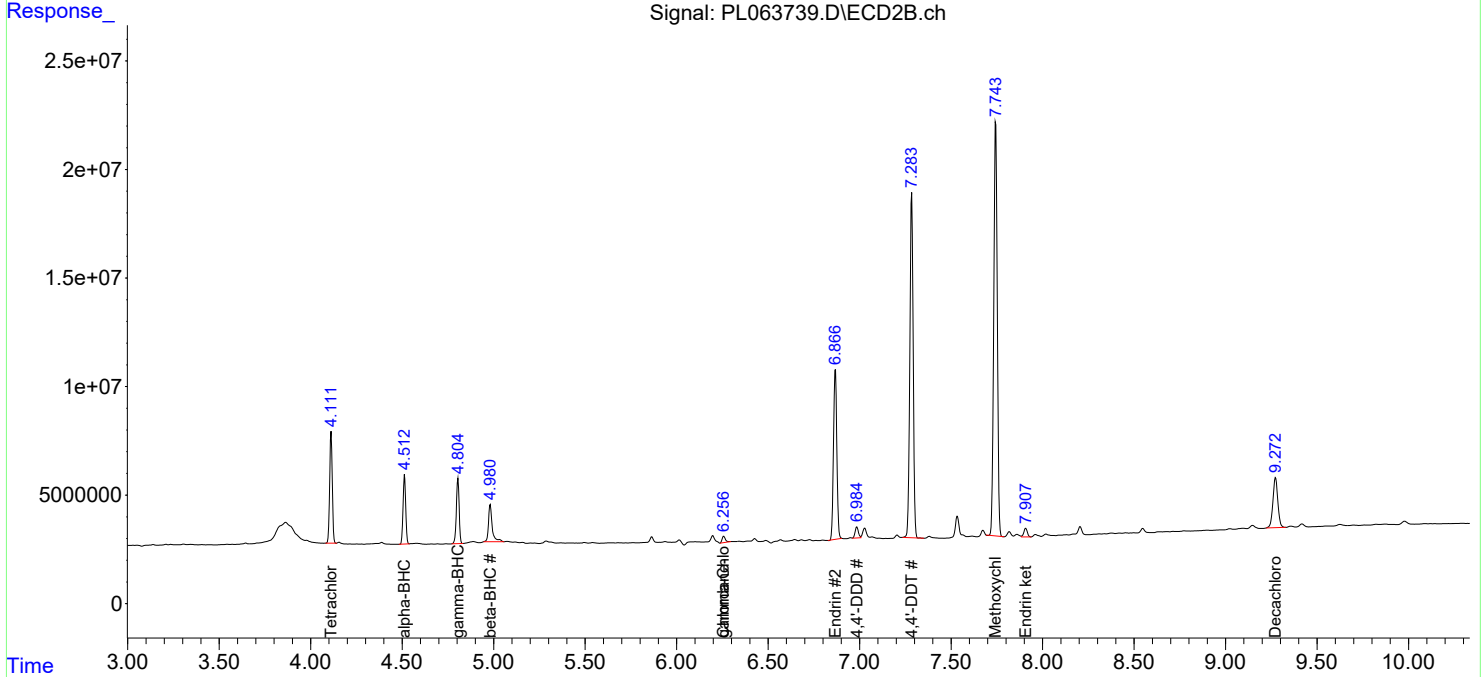
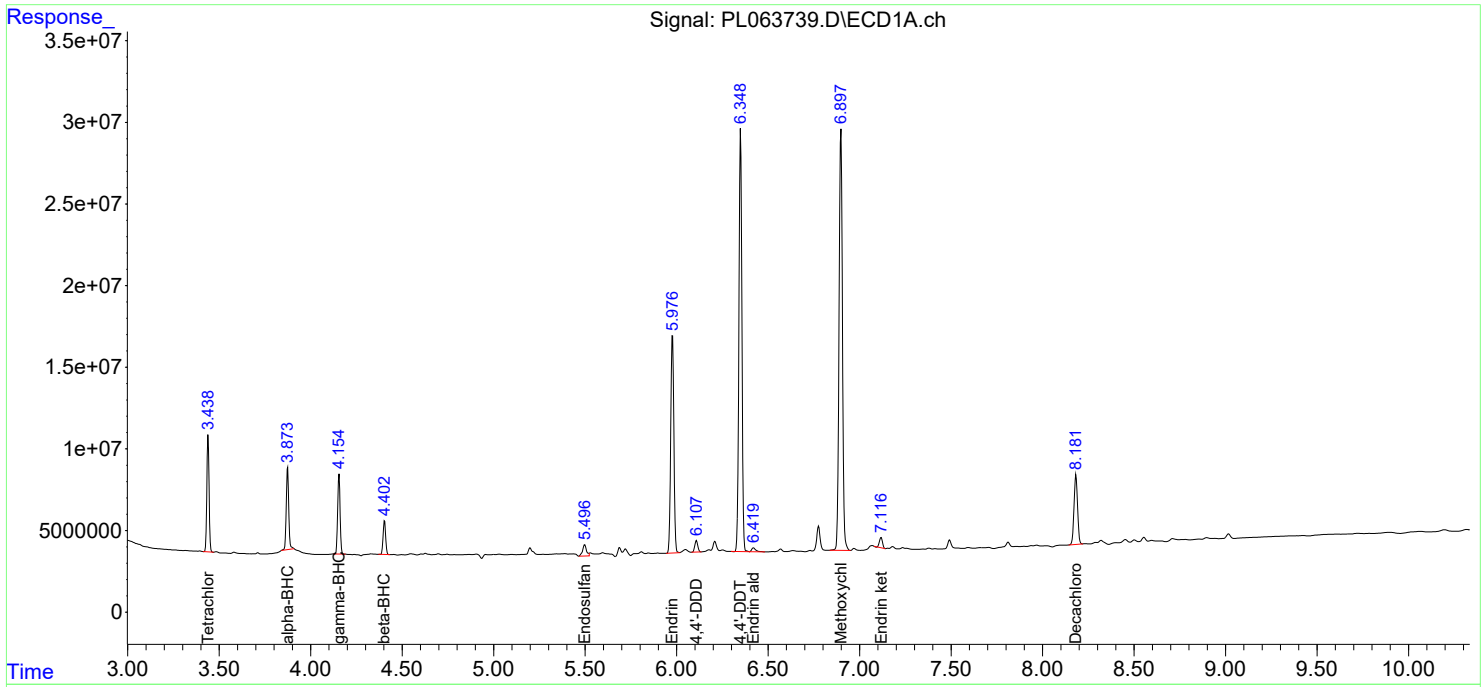
(f)=RT Delta > 1/2 Window (#)=Amounts differ by > 25% (m)=manual int.

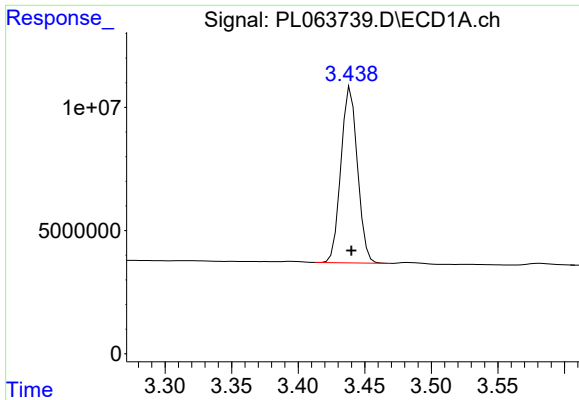
Data Path : Z:\pestpcbsrv\HPCHEM1\ECD_L\Data\PL122220\
 Data File : PL063739.D
 Signal(s) : Signal #1: ECD1A.ch Signal #2: ECD2B.ch
 Acq On : 22 Dec 2020 09:04
 Operator : AR\AJ
 Sample : PEM
 Misc :
 ALS Vial : 3 Sample Multiplier: 1

Instrument :
 ECD_L
 ClientSampled :

Integration File signal 1: autoint1.e
 Integration File signal 2: autoint2.e
 Quant Time: Dec 22 14:03:19 2020
 Quant Method : Z:\pestpcbsrv\HPCHEM1\ECD_L\methods\PL122220.M
 Quant Title : GC Extractables
 QLast Update : Tue Dec 22 14:02:42 2020
 Response via : Initial Calibration
 Integrator: ChemStation

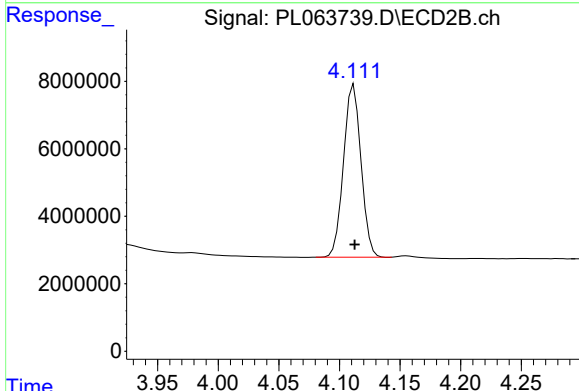
Volume Inj. : 1 µl
 Signal #1 Phase : ZB-MR2 Signal #2 Phase: ZB-MR1
 Signal #1 Info : 30M x 0.32mm x0.2 Signal #2 Info : 30M x 0.32mm x0.5µm



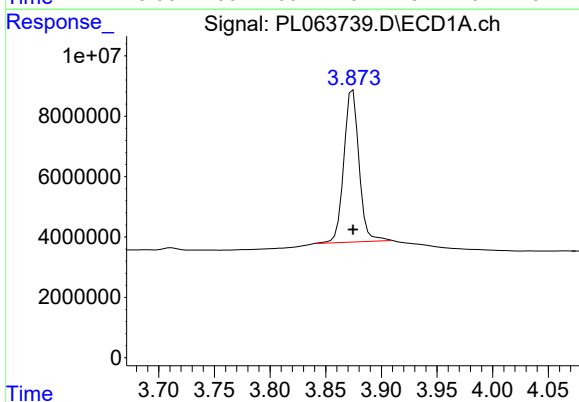


#1 Tetrachloro-m-xylene
 R.T.: 3.440 min
 Delta R.T.: 0.000 min
 Response: 61783058
 Conc: 20.61 ng/ml

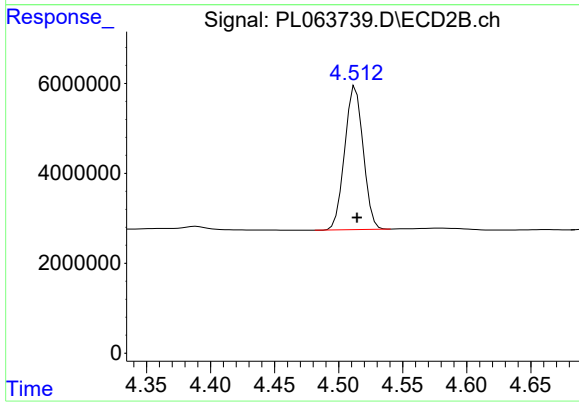
Instrument :
 ECD_L
 ClientSampled :



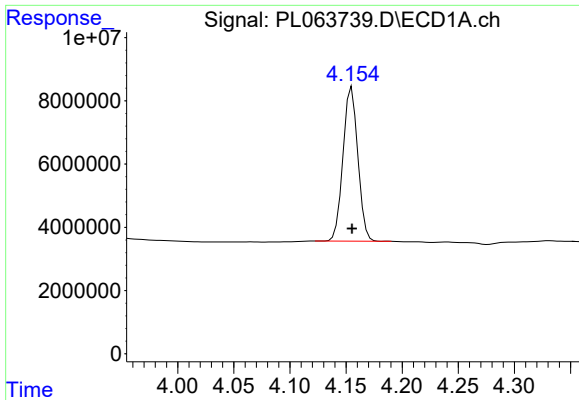
#1 Tetrachloro-m-xylene
 R.T.: 4.112 min
 Delta R.T.: 0.000 min
 Response: 51299084
 Conc: 20.09 ng/ml



#2 alpha-BHC
 R.T.: 3.874 min
 Delta R.T.: 0.000 min
 Response: 47914867
 Conc: 9.60 ng/ml

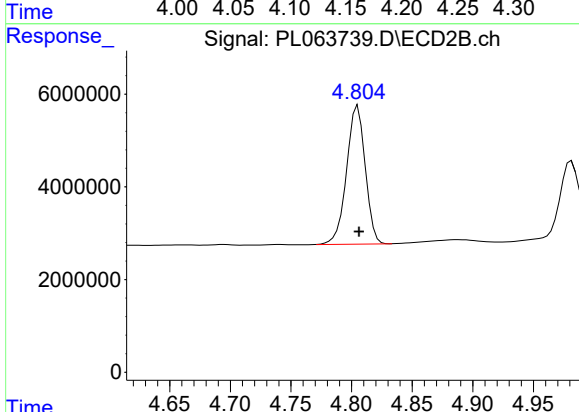


#2 alpha-BHC
 R.T.: 4.513 min
 Delta R.T.: -0.001 min
 Response: 31988837
 Conc: 8.88 ng/ml

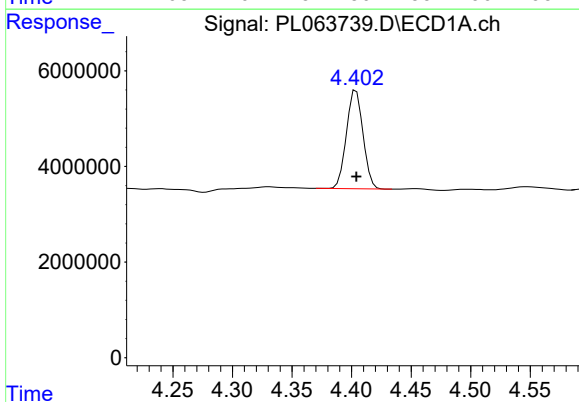


#3 gamma-BHC (Lindane)
 R.T.: 4.155 min
 Delta R.T.: 0.000 min
 Response: 44766045
 Conc: 9.79 ng/ml

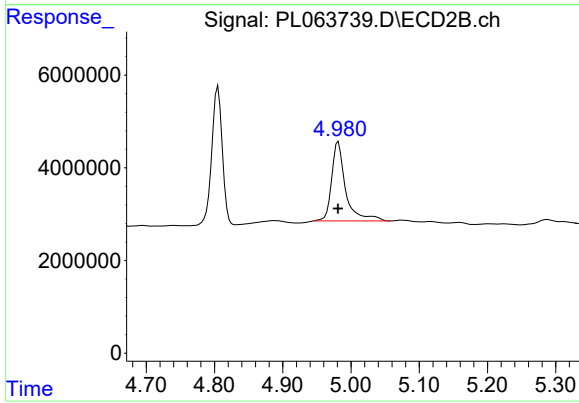
Instrument :
 ECD_L
 ClientSampled :



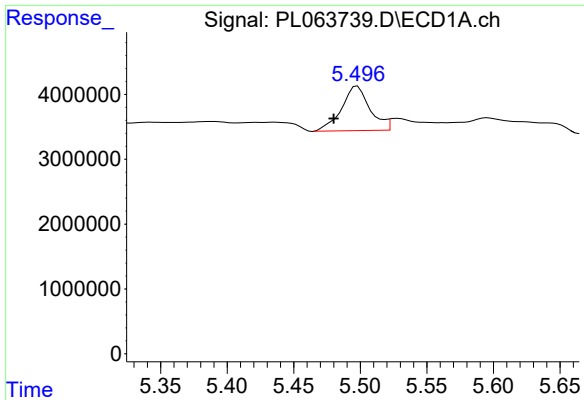
#3 gamma-BHC (Lindane)
 R.T.: 4.805 min
 Delta R.T.: 0.000 min
 Response: 31998326
 Conc: 9.38 ng/ml



#6 beta-BHC
 R.T.: 4.404 min
 Delta R.T.: 0.000 min
 Response: 20032774
 Conc: 10.36 ng/ml



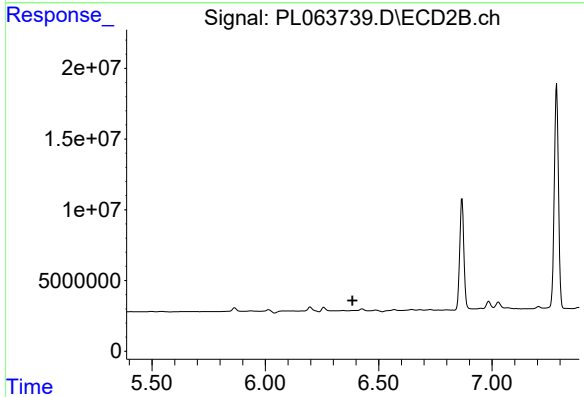
#6 beta-BHC
 R.T.: 4.981 min
 Delta R.T.: 0.000 min
 Response: 24289491
 Conc: 13.84 ng/ml



#9 Endosulfan I

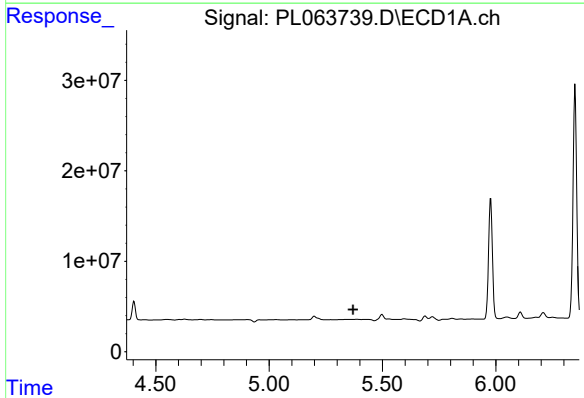
R.T.: 5.498 min
 Delta R.T.: 0.018 min
 Response: 10246772
 Conc: 2.96 ng/ml

Instrument :
 ECD_L
 ClientSampled :



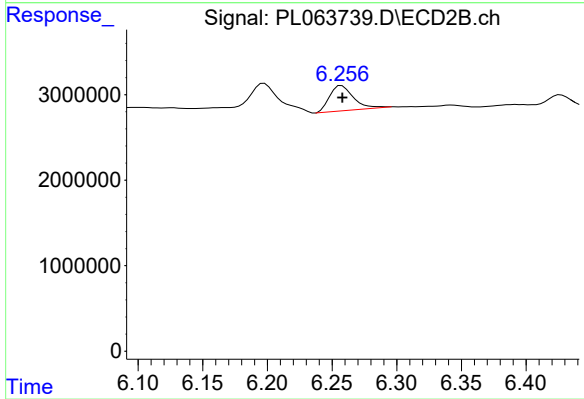
#9 Endosulfan I

R.T.: 0.000 min
 Exp R.T. : 6.385 min
 Response: 0
 Conc: N.D.



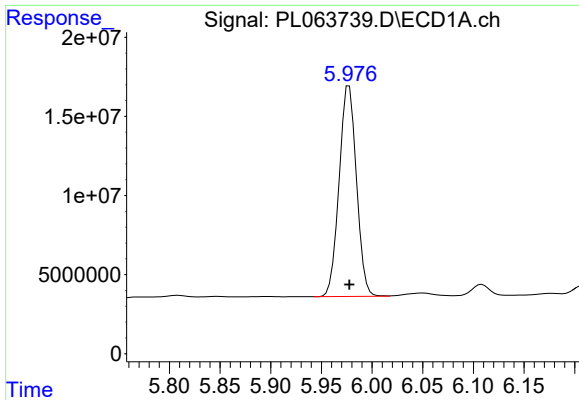
#10 gamma-Chlordane

R.T.: 0.000 min
 Exp R.T. : 5.370 min
 Response: 0
 Conc: N.D.



#10 gamma-Chlordane

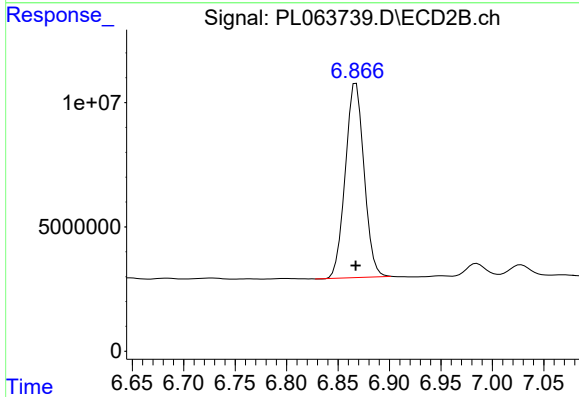
R.T.: 6.258 min
 Delta R.T.: 0.000 min
 Response: 3738585
 Conc: 1.35 ng/ml



#14 Endrin

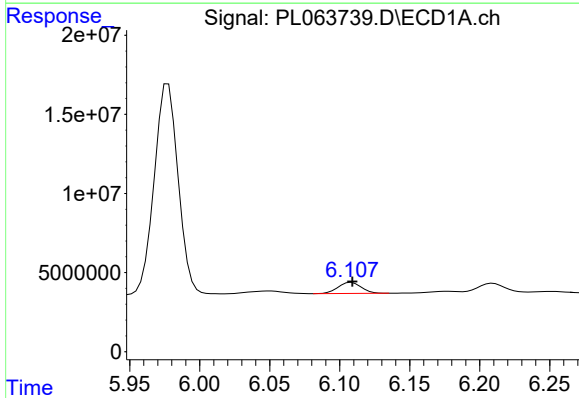
R.T.: 5.977 min
 Delta R.T.: 0.000 min
 Response: 158088306
 Conc: 54.24 ng/ml

Instrument :
 ECD_L
 ClientSampled :



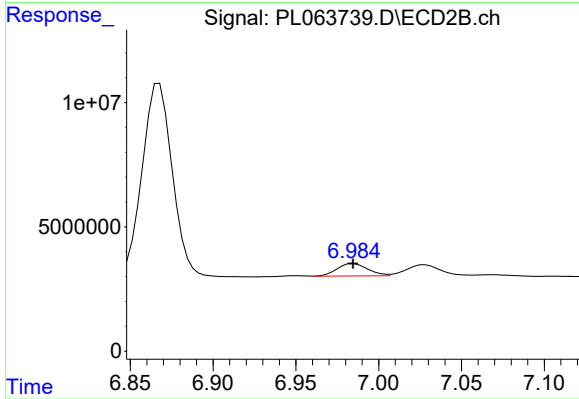
#14 Endrin

R.T.: 6.868 min
 Delta R.T.: 0.000 min
 Response: 99082570
 Conc: 51.06 ng/ml



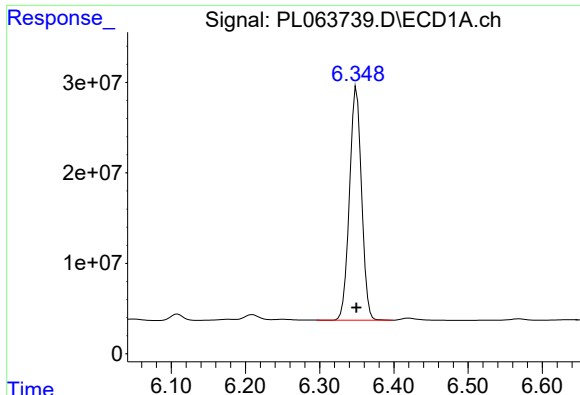
#16 4,4'-DDD

R.T.: 6.108 min
 Delta R.T.: 0.000 min
 Response: 8048709
 Conc: 2.75 ng/ml



#16 4,4'-DDD

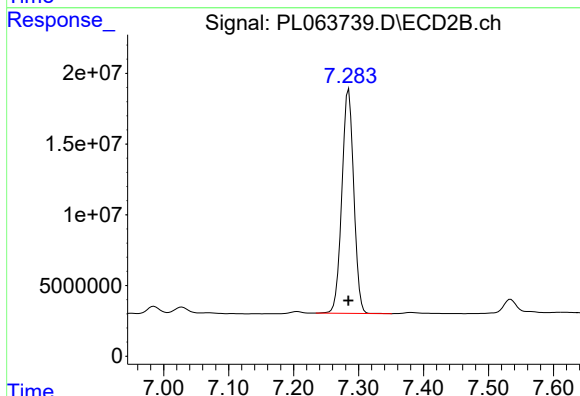
R.T.: 6.985 min
 Delta R.T.: 0.000 min
 Response: 6423560
 Conc: 3.04 ng/ml



#17 4,4'-DDT

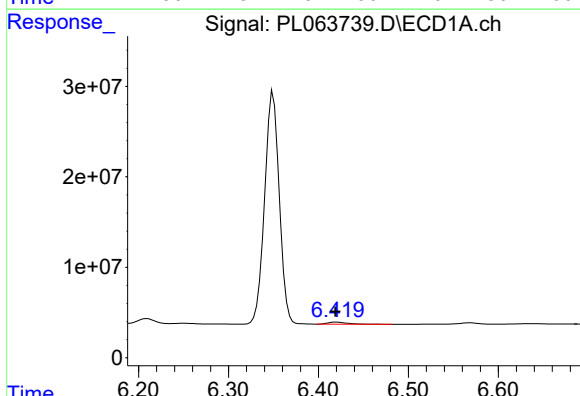
R.T.: 6.350 min
 Delta R.T.: 0.000 min
 Response: 290690198
 Conc: 109.69 ng/ml

Instrument :
 ECD_L
 ClientSampled :



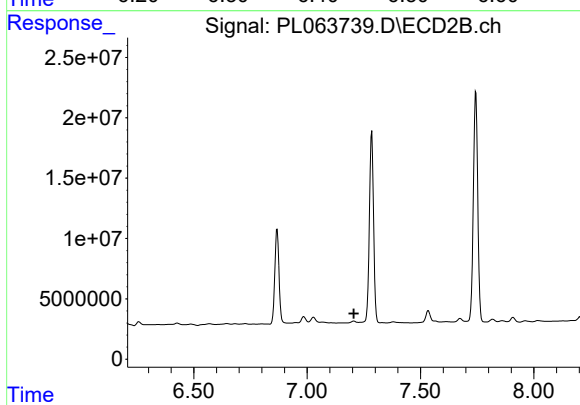
#17 4,4'-DDT

R.T.: 7.285 min
 Delta R.T.: 0.000 min
 Response: 201881368
 Conc: 103.77 ng/ml



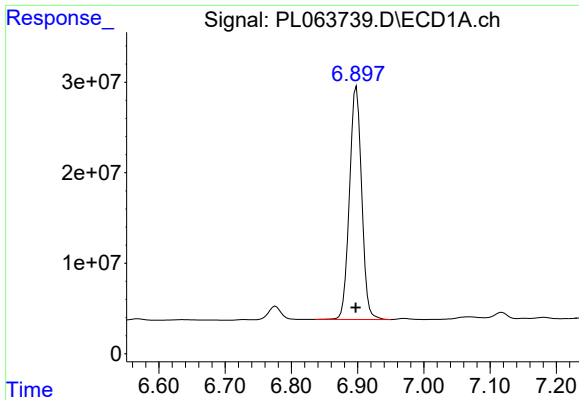
#18 Endrin aldehyde

R.T.: 6.420 min
 Delta R.T.: 0.001 min
 Response: 3621075
 Conc: 1.31 ng/ml



#18 Endrin aldehyde

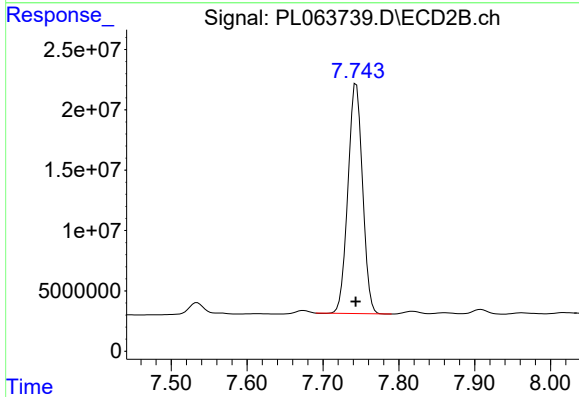
R.T.: 0.000 min
 Exp R.T. : 7.206 min
 Response: 0
 Conc: N.D.



#20 Methoxychlor

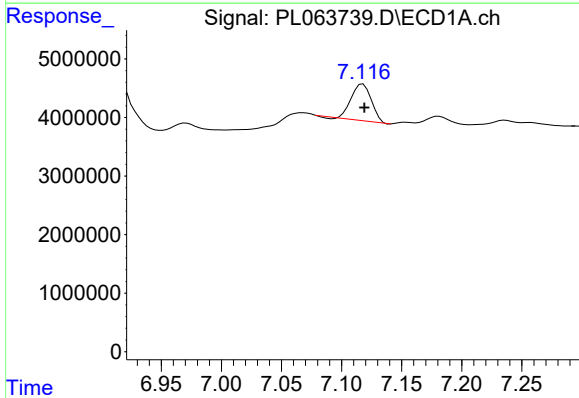
R.T.: 6.898 min
 Delta R.T.: 0.001 min
 Response: 329754234
 Conc: 251.00 ng/ml

Instrument :
 ECD_L
 ClientSampled :



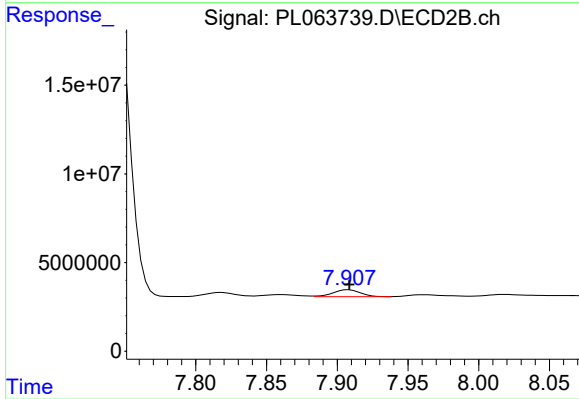
#20 Methoxychlor

R.T.: 7.744 min
 Delta R.T.: 0.000 min
 Response: 255301861
 Conc: 241.98 ng/ml



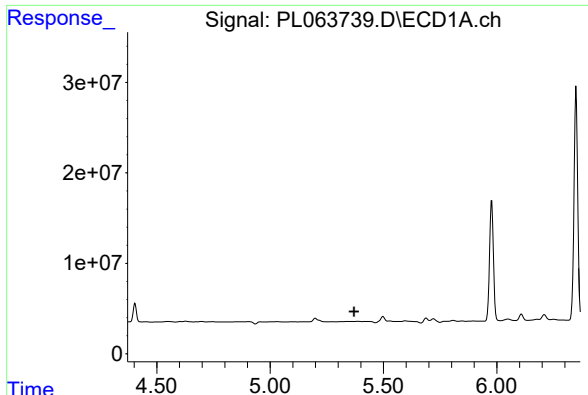
#21 Endrin ketone

R.T.: 7.118 min
 Delta R.T.: -0.001 min
 Response: 7270109
 Conc: 2.09 ng/ml



#21 Endrin ketone

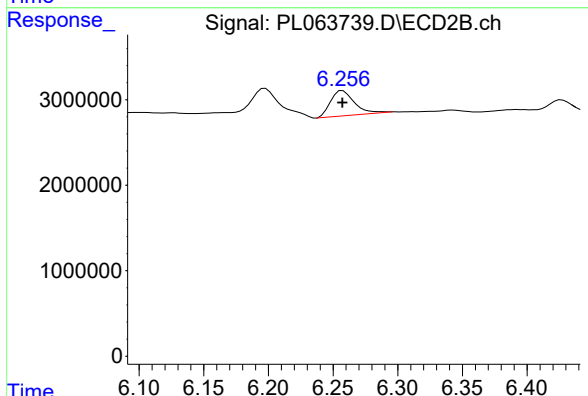
R.T.: 7.908 min
 Delta R.T.: 0.000 min
 Response: 5277574
 Conc: 2.14 ng/ml



#25 Chlordane-3

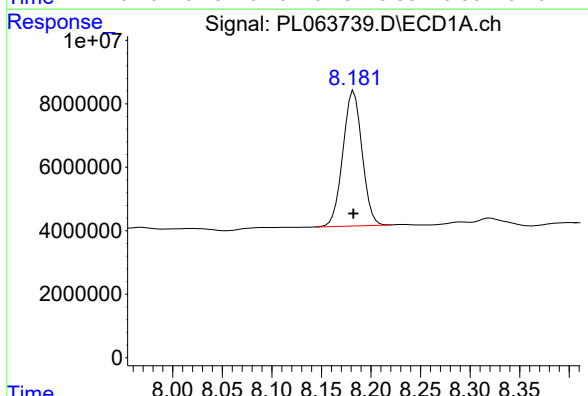
R.T.: 0.000 min
 Exp R.T.: 5.370 min
 Response: 0
 Conc: N.D.

Instrument :
 ECD_L
 ClientSampleId :



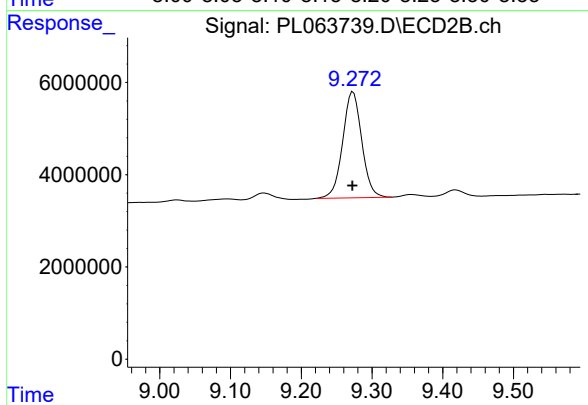
#25 Chlordane-3

R.T.: 6.258 min
 Delta R.T.: 0.000 min
 Response: 3738585
 Conc: 10.91 ng/ml



#28 Decachlorobiphenyl

R.T.: 8.183 min
 Delta R.T.: 0.000 min
 Response: 57206869
 Conc: 20.76 ng/ml



#28 Decachlorobiphenyl

R.T.: 9.273 min
 Delta R.T.: 0.001 min
 Response: 43122093
 Conc: 21.87 ng/ml