

Data Path : Z:\pestpcbsrv\HPCHEM1\ECD_L\Data\PL122220\
 Data File : PL063764.D
 Signal(s) : Signal #1: ECD1A.ch Signal #2: ECD2B.ch
 Acq On : 22 Dec 2020 15:51
 Operator : AR\AJ
 Sample : L5176-01
 Misc :
 ALS Vial : 26 Sample Multiplier: 1

Instrument :
 ECD_L
 ClientSampleId :

Integration File signal 1: autoint1.e
 Integration File signal 2: autoint2.e
 Quant Time: Dec 23 00:54:08 2020
 Quant Method : Z:\pestpcbsrv\HPCHEM1\ECD_L\methods\PL122220.M
 Quant Title : GC Extractables
 QLast Update : Tue Dec 22 14:02:42 2020
 Response via : Initial Calibration
 Integrator: ChemStation

Volume Inj. : 1 µl
 Signal #1 Phase : ZB-MR2 Signal #2 Phase: ZB-MR1
 Signal #1 Info : 30M x 0.32mm x0.2 Signal #2 Info : 30M x 0.32mm x0.5µm

	Compound	RT#1	RT#2	Resp#1	Resp#2	ng/ml	ng/ml

System Monitoring Compounds							
1)	SA Tetrachlo...	3.439	4.112	35767448	32893757	11.931	12.884
28)	SA Decachlor...	8.181	9.271	31162283	31578301	11.311	16.017 #
Target Compounds							
10)	B gamma-Chl...	5.394f	0.000	1588904	0	0.418	N.D. #
11)	B alpha-Chl...	0.000	6.330	0	3477929	N.D.	1.260 #
12)	B 4,4'-DDE	5.624f	0.000	6892751	0	2.005	N.D. #
19)	B Endosulfa...	6.653f	0.000	5261024	0	1.671	N.D. #
20)	A Methoxychlor	0.000	7.752	0	4396024	N.D.	4.167 #
25)	Chlordane-3	5.394f	0.000	1588904	0	4.862	N.D. #
26)	Chlordane-4	0.000	6.330	0	3477929	N.D.	8.461 #

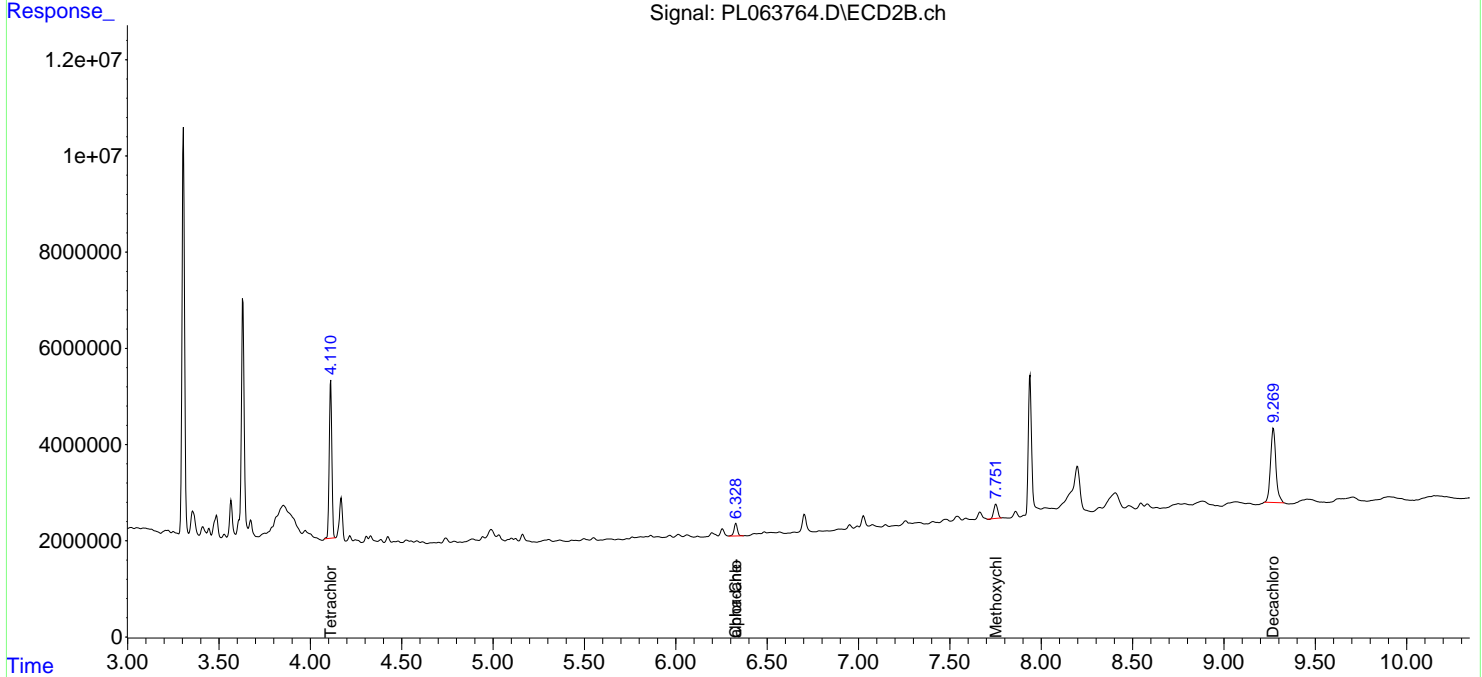
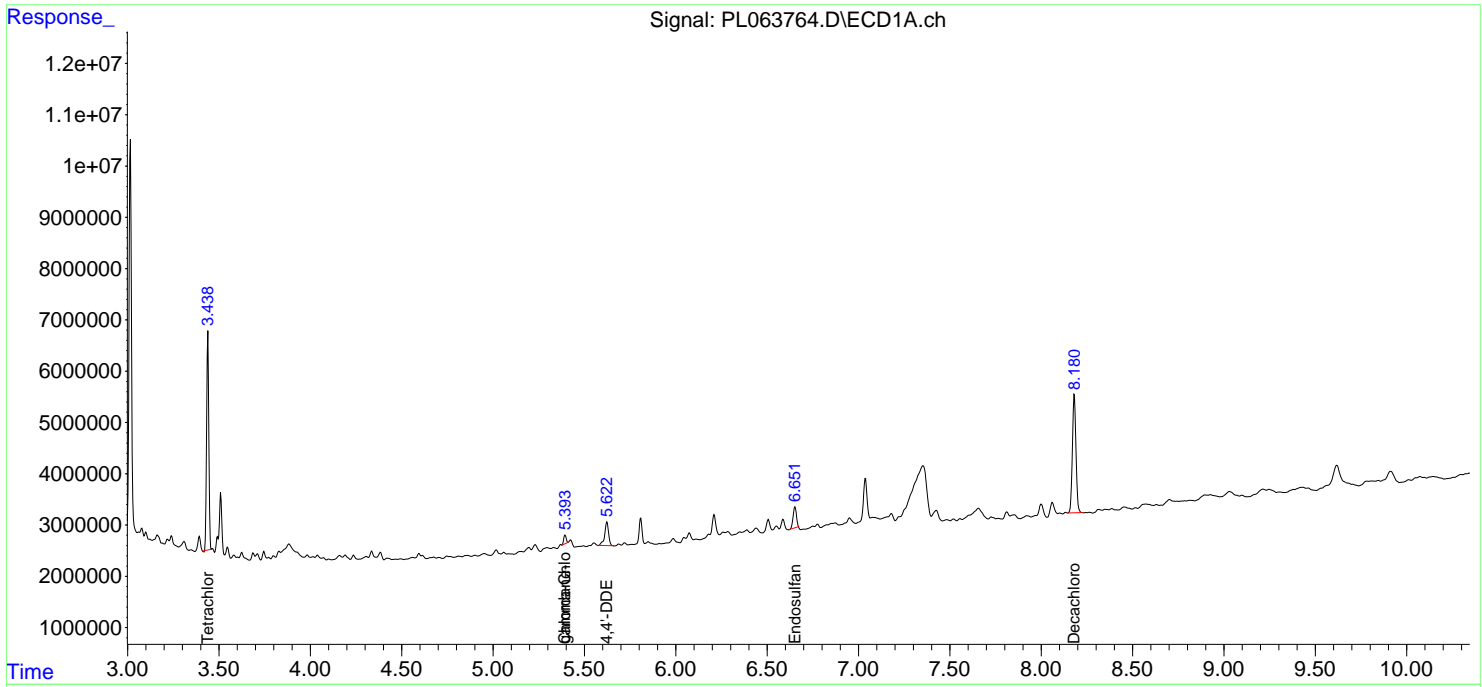
(f)=RT Delta > 1/2 Window (#)=Amounts differ by > 25% (m)=manual int.

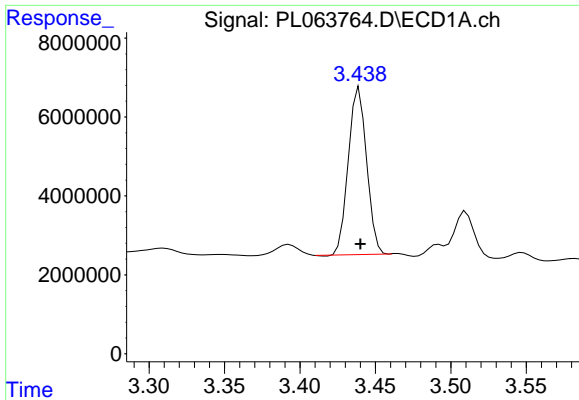
Data Path : Z:\pestpcbsrv\HPCHEM1\ECD_L\Data\PL122220\
 Data File : PL063764.D
 Signal(s) : Signal #1: ECD1A.ch Signal #2: ECD2B.ch
 Acq On : 22 Dec 2020 15:51
 Operator : AR\AJ
 Sample : L5176-01
 Misc :
 ALS Vial : 26 Sample Multiplier: 1

Instrument :
 ECD_L
 ClientSampleId :

Integration File signal 1: autoint1.e
 Integration File signal 2: autoint2.e
 Quant Time: Dec 23 00:54:08 2020
 Quant Method : Z:\pestpcbsrv\HPCHEM1\ECD_L\methods\PL122220.M
 Quant Title : GC Extractables
 QLast Update : Tue Dec 22 14:02:42 2020
 Response via : Initial Calibration
 Integrator: ChemStation

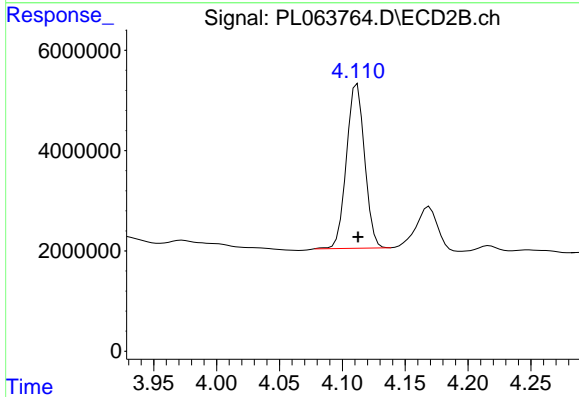
Volume Inj. : 1 µl
 Signal #1 Phase : ZB-MR2 Signal #2 Phase: ZB-MR1
 Signal #1 Info : 30M x 0.32mm x0.2 Signal #2 Info : 30M x 0.32mm x0.5µm



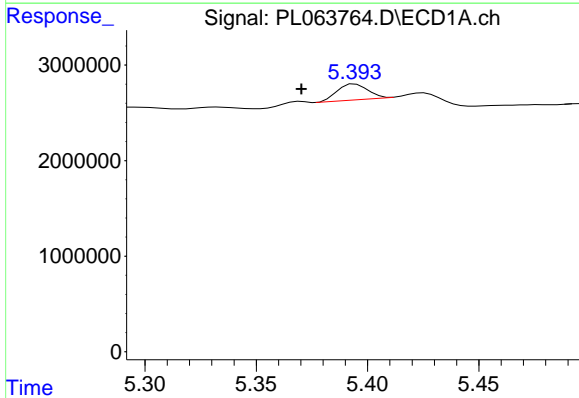


#1 Tetrachloro-m-xylene
 R.T.: 3.439 min
 Delta R.T.: 0.000 min
 Response: 35767448
 Conc: 11.93 ng/ml

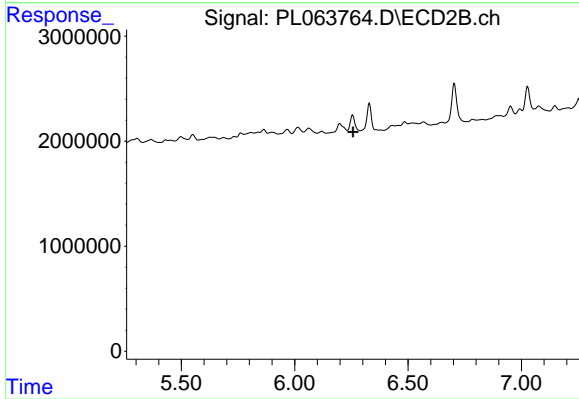
Instrument :
 ECD_L
 ClientSampled :



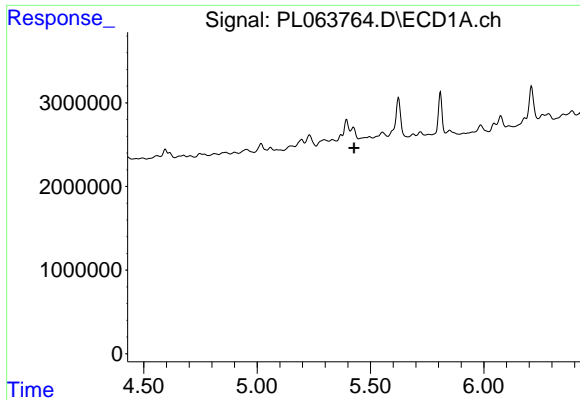
#1 Tetrachloro-m-xylene
 R.T.: 4.112 min
 Delta R.T.: 0.000 min
 Response: 32893757
 Conc: 12.88 ng/ml



#10 gamma-Chlordane
 R.T.: 5.394 min
 Delta R.T.: 0.024 min
 Response: 1588904
 Conc: 0.42 ng/ml



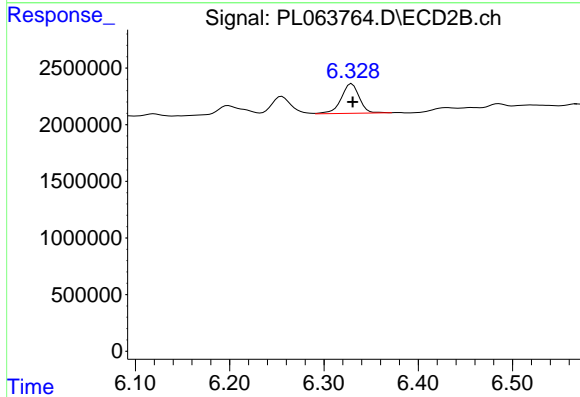
#10 gamma-Chlordane
 R.T.: 0.000 min
 Exp R.T.: 6.258 min
 Response: 0
 Conc: N.D.



#11 alpha-Chlordane

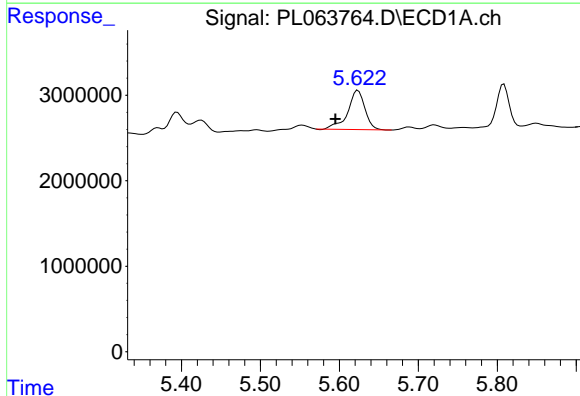
R.T.: 0.000 min
 Exp R.T.: 5.428 min
 Response: 0
 Conc: N.D.

Instrument :
 ECD_L
 ClientSampleId :



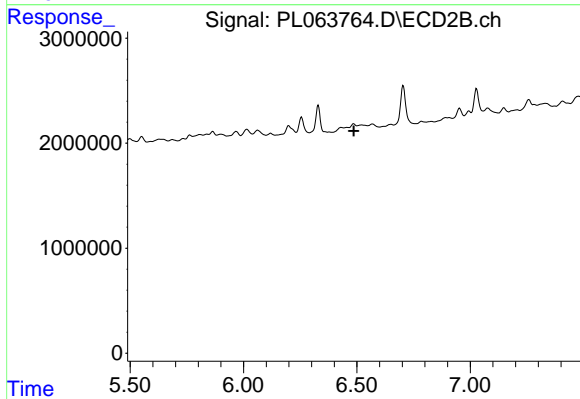
#11 alpha-Chlordane

R.T.: 6.330 min
 Delta R.T.: -0.001 min
 Response: 3477929
 Conc: 1.26 ng/ml



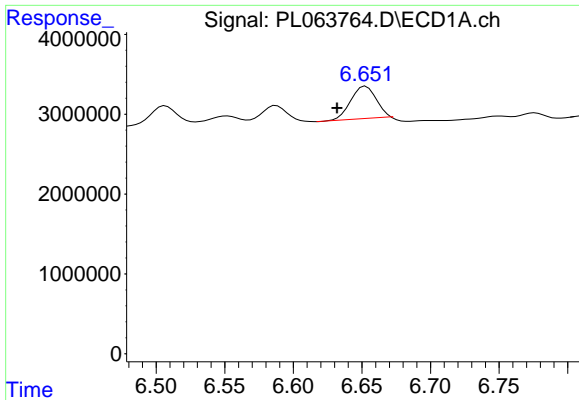
#12 4,4'-DDE

R.T.: 5.624 min
 Delta R.T.: 0.029 min
 Response: 6892751
 Conc: 2.00 ng/ml



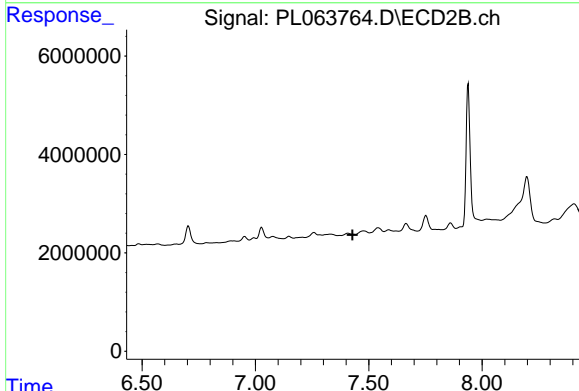
#12 4,4'-DDE

R.T.: 0.000 min
 Exp R.T.: 6.487 min
 Response: 0
 Conc: N.D.

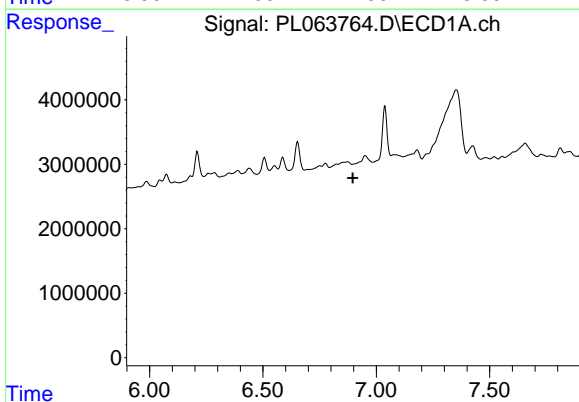


#19 Endosulfan Sulfate
 R.T.: 6.653 min
 Delta R.T.: 0.021 min
 Response: 5261024
 Conc: 1.67 ng/ml

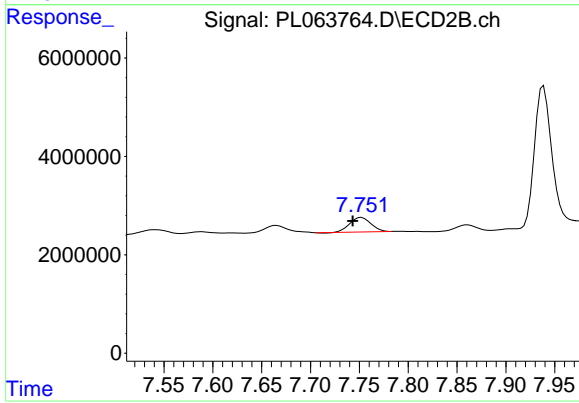
Instrument :
 ECD_L
 ClientSampled :



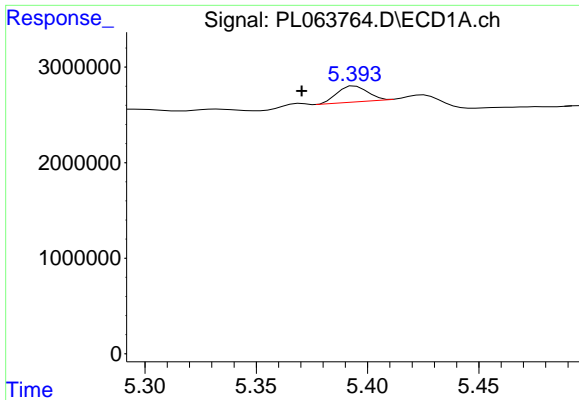
#19 Endosulfan Sulfate
 R.T.: 0.000 min
 Exp R.T. : 7.428 min
 Response: 0
 Conc: N.D.



#20 Methoxychlor
 R.T.: 0.000 min
 Exp R.T. : 6.897 min
 Response: 0
 Conc: N.D.

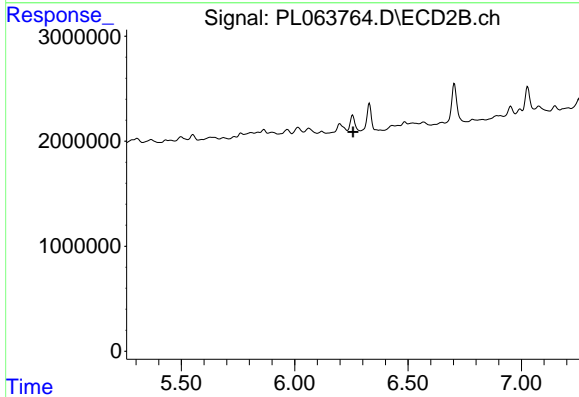


#20 Methoxychlor
 R.T.: 7.752 min
 Delta R.T.: 0.009 min
 Response: 4396024
 Conc: 4.17 ng/ml

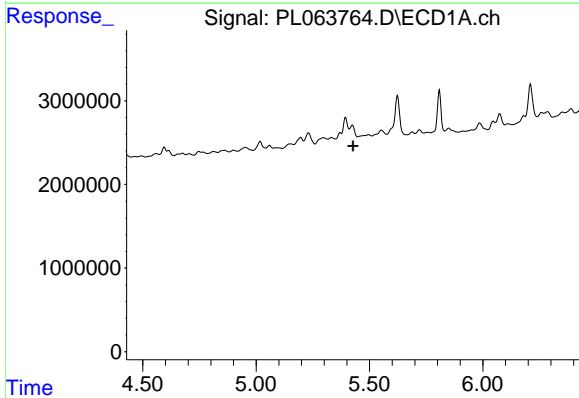


#25 Chlordane-3
 R.T.: 5.394 min
 Delta R.T.: 0.024 min
 Response: 1588904
 Conc: 4.86 ng/ml

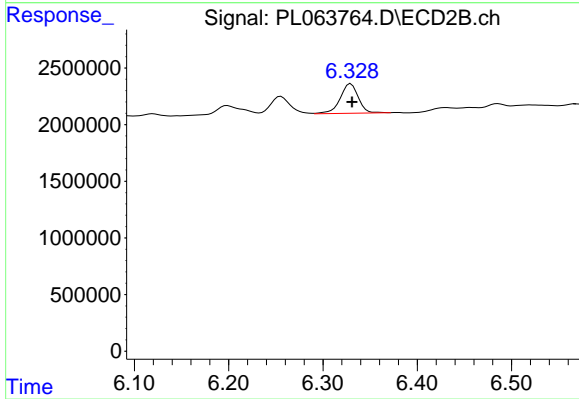
Instrument :
 ECD_L
 ClientSampleId :



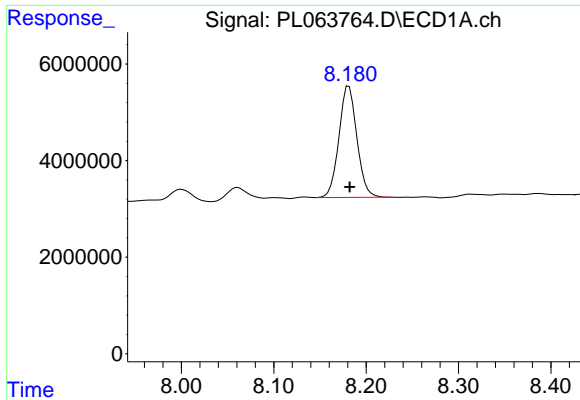
#25 Chlordane-3
 R.T.: 0.000 min
 Exp R.T. : 6.257 min
 Response: 0
 Conc: N.D.



#26 Chlordane-4
 R.T.: 0.000 min
 Exp R.T. : 5.428 min
 Response: 0
 Conc: N.D.



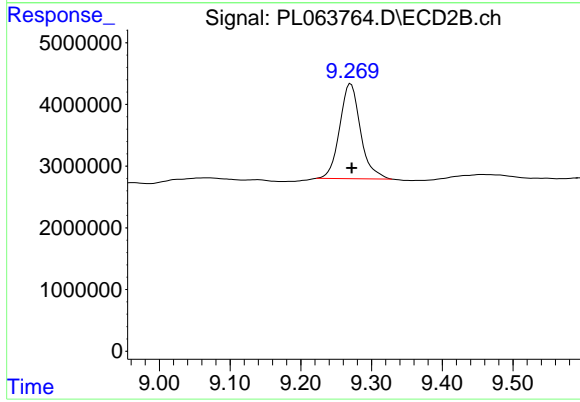
#26 Chlordane-4
 R.T.: 6.330 min
 Delta R.T.: -0.001 min
 Response: 3477929
 Conc: 8.46 ng/ml



#28 Decachlorobiphenyl

R.T.: 8.181 min
Delta R.T.: 0.000 min
Response: 31162283
Conc: 11.31 ng/ml

Instrument :
ECD_L
ClientSampleId :



#28 Decachlorobiphenyl

R.T.: 9.271 min
Delta R.T.: -0.001 min
Response: 31578301
Conc: 16.02 ng/ml